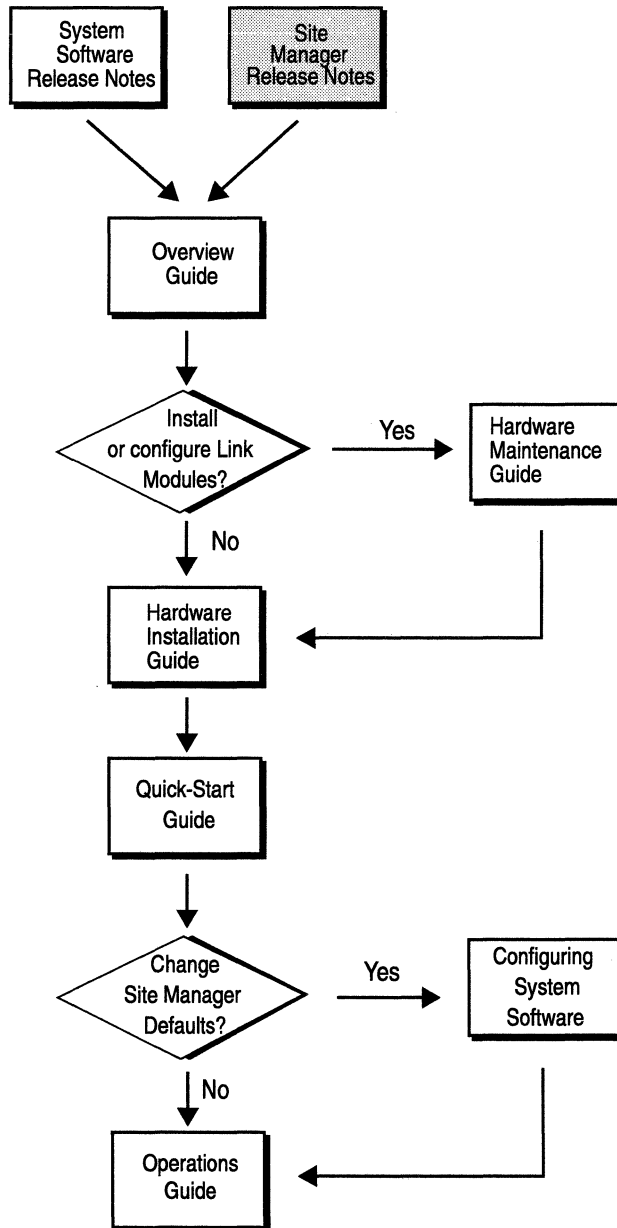


Site Manager Release Notes

Version 1.50



Reading Path



Part Number: 105548, Revision A

Copyright 1988-1993 Wellfleet Communications, Inc. (Unpublished)

All Rights Reserved. Printed in USA. February, 1993.

Information presented in this document is subject to change without notice. This information in this document is proprietary to Wellfleet Communications, Inc. and/or its suppliers.

The software described in this document is furnished under a license agreement or non-disclosure agreement. The terms of the Software License are provided for reference on the following page.

Notice to U.S. Government Licensees

**For Department of Defense
Restricted Rights Legend**

Use, duplication, or disclosure by the government is subject to restrictions as as set forth in subparagraph (c)(1)(ii) of the Rights in Technical Data and Computer Software Clause at DFARS 252.227-7013.

**For All Other Executive Agencies
Notice**

Notwithstanding any other license agreement that may pertain to, or accompany the delivery of, this computer software, the rights of the Government regarding its use, reproduction, and disclosure are as set forth in the Commercial Computer Software-Restricted Rights clause at FAR 52.227-19.

AppleTalk is a registered trademark of Apple Computer, Inc.

DEC, DECnet, VAX, and VT-100 are trademarks of Digital Equipment Corporation.

Distinct is a registered trademark and Distinct TCP/IP is a trademark of Distinct Corporation.

Ethernet is a registered trademark and XNS is a trademark of Xerox Corporation.

HP is a registered trademark of Hewlett-Packard Company.

IBM, IBM PC, NetBIOS, and Token Ring are trademarks of International Business Machines Corp.

Internet Packet Exchange (IPX) and Novell are trademarks of Novell, Inc.

Intel is a registered trademark of Intel Corporation.

Microsoft and MS-DOS are registered trademarks and Microsoft Windows is a trademark of Microsoft Corporation.

Sun Workstation and SUN OS are trademarks of Sun Microsystems, Inc.

UNIX is registered trademark of AT&T Bell Laboratories.

Wellfleet is a trademark of Wellfleet Communications, Inc.

X Window System is a trademark of the Massachusetts Institute of Technology.

VINES is a trademark of Banyan Systems Incorporated.

Other product names are trademarks or registered trademarks of their respective owners.

3COM is a trademark of 3COM Corporation.

Wellfleet Communications, Inc., 15 Crosby Drive, Bedford, MA 01730

Table of Contents

Version 1.50

About these Release Notes	1
Upgrading to Site Manager Version 1.50	2
Guidelines For Working With Site Manager	3
Known Anomalies	9
UNIX and PC Anomalies	9
UNIX - Specific Anomalies	17
PC - Specific Anomalies	17
Documentation Errata	22
Quick-Start Guide	22
Configuring System Software Volume I	22

About these Release Notes

The Site Manager version 1.50 allows you to manage Wellfleet routers running system software version 7.50.

These Site Manager Release Notes describe additional enhancements and functionality included in version 1.50 that is not documented elsewhere, including:

- ❑ How to upgrade from your current Site Manager version to version 1.50.
- ❑ Guidelines for working with Site Manager 1.50.
- ❑ Known Site Manager anomalies.
- ❑ Documentation Errata.

Upgrading to Site Manager Version 1.50

Use the instructions described in this section if you are currently running an earlier release of Site Manager (Version 1.00 or 1.01) on your SPARC workstation.

Note: Before upgrading to Site Manager 1.50, ensure that your SPARC workstation is running SUN OpenWindows 3.0 using either the OpenLook window manager (supplied with OpenWindows) or Motif window manager (optional) or MIT X11 Windows System (optional; Release 4.0 or greater).

Upgrade to Site Manager 1.50 as follows:

1. Load the Site Manager 1.50 cartridge in the proper drive.
2. Log in to your SPARC workstation as root.
3. Change to the home directory where Site Manager 1.00 or 1.01 is installed.

For example:

```
cd /u/backbay/sitemanager
```

4. Extract the files from the Site Manager 1.50 cartridge using the **tar** command.

For example:

```
tar xvf /dev/rst0
```

Where **rst0** is the device name of the tape drive.

5. Execute the Site Manager installation script by entering:

```
WFSM_INSTALL
```

When installation is finished, your workstation displays the message *“Site Manager Installation Complete”*.

6. Enter **logout** to exit.

Guidelines For Working With Site Manager

This section describes guidelines for working with Site Manager 1.50.

Guideline: Under OpenWindows, if you are in the Remote File System, the Event Manager, or running Remote Config, you may experience a brief hang. This is due to the signalling mechanism incorporated into these applications. To avoid the problem, do not leave the pull-down menus opened during any TFTP operation. If this does happen, you will get an error in the console window with the following text:

```
Warning:  
Name: menubar  
Class: XmRowColumn  
XtGrabKeyboard failed
```

To fix this you will have to log in from another workstation and restart the X server.

Platform: UNIX

Guideline: When executing any Site Manager application, never start up the Site Manager in the `c:\wf` directory. You will get a GPF (general protection fault) if you attempt to remote config the file config from this directory.

Platform: PC

Guideline: When executing any Site Manager application, never start up the Site Manager in the `/usr/wf` directory. You will get a core dump if you attempt to remote config the file config from this directory.

Platform: UNIX

Guideline: When you create a file using a Site Manager application (when you use the Configuration Manager to create a configuration file, for example), make certain that you have write-access privileges to the current working directory.

Platform: PC and UNIX

Guideline: When closing or exiting a Site Manager application, make certain to use the Site Manager's file/exit menu selection. Do **not** exit from the application by using the Windows' title bar.

Platform: PC and UNIX

Guideline: When you first activate the Site Manager's statistics screens, all counters displayed on the screens begin incrementing from 0. The actual statistics count kept by the router is different, however, and can be accessed using the TI.

Platform: PC and UNIX

Guideline: Compacting files on the router's Flash card can take up to 3 minutes when you use the Site Manager's remote file system application. Do **not** attempt to perform any other tasks until you get a pop-up message box informing you that the files have been compacted. (Note that the hour-glass that indicates that the system is busy may disappear after 30 seconds, however, the files are not compacted until the confirmation message appears.)

Platform: PC and UNIX

Guideline: If you are working with a large Bridge forwarding table, the statistics may take a longer than normal time to display on the screen.

Platform: PC and UNIX

Guideline: If you want to change colors or fonts on your PC or UNIX system, refer to this guideline. When changing fonts on a UNIX system, there is a file located in the \$OPENWINHOME/lib/app-defaults directory called XJam that you must edit. Search for the following line:

```
XJam*fontList:                fixed
```

Change the word fixed to the name of the font you desire. For a list of the fonts your X Server supports, run the command xlsfonts, which should be in the directory \$OPENWINHOME/bin. *Note that this will change the font for all users of Site Manager.* To change the font for a single user, add the above line to his/her .Xdefaults file. Make sure you change the word fixed to the appropriate font, for example:

```
XJam*fontList:                8x16
```

To change fonts on the PC, you must edit the file jam.ini; this file is located in your MS-WINDOWS directory (usually \windows). Search for the following line:

```
SystemFont=OEM_FIXED_FONT
```

Change OEM_FIXED_FONT to the desired font. Some examples are provided for you inside the jam.ini file. For example:

```
SystemFont=SYSTEM_FIXED_FONT
```

In UNIX, to change the color scheme of Site Manager, edit the XJam file discussed above. JAM allows you to change the foreground color, the background color and a subset of system colors.

Note: We recommend strongly that you do not change the subset of system colors.

To change the foreground color, look for the following line, from within you favorite editor:

```
XJam*foreground:           white
```

You can change the foreground color, in this case white, to any color the X Server knows about. For a list of all the known colors, execute the `showrgb` command. This command is most often found in the `$OPENWINHOME/bin` directory. Any color you see can be inserted as your foreground color. To change the background color, perform the same procedure as above, but change the `XJam*background` entry. Just like with changing fonts, this will change the colors for all users. To edit a single user's colors, add the following lines to the users `.Xdefaults` file:

```
XJam*foreground:           steelblue3
XJam*background:          chartreuse3
```

On the PC, the color scheme is taken from the Program Manager. Therefore, whatever colors you choose for the *entire* Windows setup, will be applied to Site Manager.

Note: Do not edit the colors defined in the jam.ini file; this may cause problems with Site Manager.

To change the colors for Windows, refer to the MSWindows reference manual.

Platform: PC and UNIX

Guideline: For some unknown reason, sometimes when an IP records is created, an associated ARP record does not get created. If IP is not functioning properly, and all debugging efforts have failed, use the TI to check that every IP record has an associated ARP record. If any ARP records are missing, you will need to use the TI to create the ARP record to go with the associated IP record.

Platform: PC and UNIX

Guideline: On the Log Monitor and Trap Monitor, note that addresses are sometimes displayed in byte-inverted format.

Platform: PC only

Guideline: When you are working with OSPF and wish to edit OSPF parameters, you can access the OSPF configuration screen easily by selecting the following menu path:

Protocols/IP/OSPF/ <OSPF_window>

where <OSPF_window> is one of the available OSPF configuration window choices: Global, Area, Interfaces, or Virtual Interfaces.

Platform: PC and UNIX

Guideline: After you add a RIP, OSPF, Import or Export IP route filter, note that there are additional filter fields that you may have to edit in order for the filter to operate properly on your network. If you do not edit this additional filter information, the Site Manager accepts the default values.

Platform: PC and UNIX

Guideline: Site Manager allows you to add, delete, or modify protocols on a circuit. It does not, however, allow you to change network addresses on a circuit. If you want to change the address of a protocol on a circuit, you must delete that protocol interface, and create a new one.

Platform: PC and UNIX

Known Anomalies

The following sections, *UNIX and PC Anomalies*, and *PC-Specific Anomalies*, describe known Site Manager anomalies and their suggested work arounds. Software fixes for all known anomalies are expected in the near future.

UNIX and PC Anomalies

Anomaly : **Can't specify action when adding an IPX SAP filter**

Platform: UNIX and PC

PIN Number: u350

Description: You cannot specify the action when adding an IPX SAP Server or Network filter. There is an extra nameless field in the Add SAP Net Level Window, but you cannot do anything with it.

Work Around: To specify the action, you have to first add the filter, then edit it; the Action field only appears when editing the filter.

Anomaly : **No stats in the OSPF Virtual Interface Stats Window**

Platform: UNIX and PC

PIN Number: u366

Description: In the Virtual Interface Activity Statistics Window, only the virtual addresses appear, no statistics. The console displays the following message: `get_list:SnmpGet failed: no such object.`

Work Around: This anomaly will be fixed in a subsequent release.

Anomaly : Circuit name in AppleTalk statistics windows gets cleared

Platform: UNIX and PC

PIN Number: u374

Description: The Circuit field for the traffic windows is not always redrawn in any of the traffic or errors windows for AppleTalk statistics. This seems to happen when the mouse is moved in and out of the window as the stats are appearing in the window. The Circuit column goes blank and is never updated.

Work Around: Do not move the mouse in and out of the window while stats are being drawn. This anomaly will be fixed in a subsequent release.

Anomaly : Long IPX SAP Server names overwrite socket.

Platform: UNIX and PC

PIN Number: u404

Description: In the IPX SAP Table Statistics Window, servers with very long names don't have the proper socket number displayed. It seems the last four characters in the name, including the trailing ", are displayed as the socket number.

This happens with servers whose names are 38 characters long and are of type 0x4b.

Work Around: Give your servers shorter names. This anomaly will be fixed in a subsequent release.

Anomaly : **No message displayed to user at boot.**

Platform: UNIX and PC

PIN Number: u406

Description: The Site Manager does not tell you when the router is back up after a reboot.

Work Around: This anomaly will be fixed in a subsequent release.

Anomaly : **AppleTalk and VINES should not be configurable over SMDS**

Platform: UNIX and PC

PIN Number: u412

Description: Site Manager incorrectly allows you to configure AppleTalk and VINES over an SMDS circuit.

Work Around: Do not use VINES or AppleTalk over SMDS. This anomaly will be fixed in a subsequent release.

Anomaly : **IP over SMDS -- MAC address improperly handled**

Platform: UNIX and PC

PIN Number: u425

Description: Site Manager fails to properly convert the SMDS NANP MAC address (entered at the MAC Address parameter) into E.164 format. Specifically, Site Manager fails to prepend C1 and append FFFF to the NANP address.

Work Around: Use the TI to configure wflpInterfaceCfgMacAddress in proper E.164 format; for example C16172802374FFFF. This anomaly will be fixed in a subsequent release.

Anomaly : Source Routing with Disabled IP Encaps

Platform: UNIX and PC

PIN Number: u57

Description: The Configuration Manager forces you to enter an IP address in the Source Routing Global parameters Window, even when IP Encaps is disabled.

Work Around: Enter the IP address; it will be subsequently ignored.

Anomaly : Cannot Turn Off Filters

Platform: UNIX and PC

PIN Number: u66

Description: The Configuration Manager does not allow you to disable filters that have been enabled.

Work Around: Either delete the filter entirely, or use the TI to disable the filter.

Anomaly : IP Circuits Without SMDS

Platform: UNIX and PC

PIN Number: u102

Description: The Configuration Manager incorrectly allows you to specify SMDS group and ARP addresses for IP circuits without SMDS.

Work Around: Do not attempt to configure these addresses unless SMDS is configured on the circuit.

Anomaly : Frame Relay Over T1 has Wrong Defaults

Platform: UNIX and PC

PIN Number: u121

Description: When you configure Frame Relay over T1, the Configuration Manager provides the wrong defaults; specifically, the Bofl parameter should be set to DISABLE and the WAN Protocol parameter should be set to Frame Relay.

Work Around: Use the Site Manager to reconfigure the parameters with the proper values.

Anomaly : Spanning Tree Forward Transitions Statistics Disappear

Platform: UNIX and PC

PIN Number: u152

Description: When you move the cursor from the Spanning Tree Interfaces Topology Information Window, the statistics disappear.

Work Around: This anomaly will be fixed in a subsequent release.

Anomaly : E1 Parameters Window lack help function

Platform: UNIX and PC

PIN Number: u177

Description: The E1 Parameters window does not have a help button.

Work Around: Refer to the *Configuring System Software Guide, Volume I*.

Anomaly : Default Token Ring Circuit Name Wrong

Platform: UNIX and PC

PIN Number: u210

Description: The default token ring circuit name is tXX (where XX is slot and connector number). This circuit name should be reserved for T1 circuits and token ring circuits should take the default oXX.

Work Around: Manually enter the circuit name to conform with the oXX format when you add a token ring circuit. This anomaly will be fixed in a subsequent release.

Anomaly : SNMP Edit Manager Screen contains blank field

Platform: UNIX and PC

PIN Number: u213

Description: The SNMP Manager field in the SNMP Edit Manager Screen is blank: it should contain the IP address of the manager being edited.

Work Around: This anomaly will be fixed in a subsequent release.

Anomaly : Spanning Tree Global MAC Address defaults to bad value

Platform: UNIX and PC

PIN Number: u216

Description: The Spanning Tree Global MAC Address defaults to an "all-0's" value allowing for the possibility of duplicate addresses within the network. Such an address is also illegal within a DECnet environment.

Work Around: You must configure a non-zero MAC address in this field.

Anomaly : Protocol Priority Stats Window comes up empty

Platform: UNIX and PC

PIN Number: u276

Description: If you select the Protocol Prioritization Stats Window before the interface window fills in with data, the Stats Window comes up with all data fields blank.

Work Around: Let the Interface Window fill in the circuit information first, then select the Statistics Window. This anomaly is true of most statistics windows.

Anomaly : T1 error field is missing

Platform: UNIX and PC

PIN Number: u280

Description: The red alarm field in the T1 Error Statistics Window is blank.

Work Around: Refer to the T1 MIB.

Anomaly : Non-numeric values accepted for SMDS address

Platform: UNIX and PC

PIN Number: u353

Description: Site Manager incorrectly allows non-numeric values to be accepted as an SMDS address when configuring an SMDS record.

Work Around: Only enter valid SMDS addresses, refer to your subscription agreement.

Anomaly : ARP doesn't get configured after ti.cfg

Platform: UNIX and PC

PIN Number: u346

Description: After you've configured your very first IP interface, the Site Manager automatically indicates that ARP is enabled for every interface you configure thereafter. This may not be true.

Work Around: If IP is not working, and all normal debugging efforts have failed, use the TI to examine all IP circuits and verify that each one has an ARP record. If any do not, you must configure an ARP record for it.

Anomaly : Dynamic Config and Save As

Platform: UNIX and PC

PIN Number: u416

Description: In Dynamic Mode, when trying to save a file on a flash with no contiguous space available, Site Manager reports that it cannot save the file. It displays the same error message that you would get if you had used the TI, which doesn't describe the actual reason it cannot save the file.

Work Around: Free up some space on the flash. Either remove some files or use the Compact command.

UNIX - Specific Anomalies

Anomaly : **Spanning Tree Traffic Statistics Window -- faulty access to**

Platform: UNIX only

PIN Number: u423

Description: Occasionally, an attempt to access the Spanning Tree Traffic Access Window results in the display of an "UNABLE TO CREATE PIPE FOR SNMP TRAFFIC" error message.

Work Around: Attempt to open the window again through the Statistics Manager. If the message recurs, use the TI to obtain Spanning Tree traffic statistics. This anomaly will be fixed in a subsequent release.

PC - Specific Anomalies

Anomaly : **Erroneous pop-up message when adding Dual T1 card in local config**

Platform: PC only

PIN Number: p58

Description: If you are trying to add circuits to a a dual T1 card in local config mode, a pop-up window with the following message appears: `db_get_object_inst();`
`RECORD NOT FOUND (attr =2)`

Work Around: Click the OK button, and you will be able to add circuits. This message is meaningless.

Anomaly : GPF on a particular file

Platform: PC only

PIN Number: p67

Description: Trying to do a remote configuration with a config file that does not conform to DOS format causes a GPF (General Protection Fault).

Work Around: Make sure the file conforms to the 8.3 DOS file format.

Anomaly : No accelerator key for the Command menu in the Statistic Manager Window

Platform: PC only

PIN Number: p121

Description: The accelerator character for the command menu in the Statistics Manager Window is missing.

Work Around: Use your mouse. Or, type the command Alt-F, which puts you in the menu bar. From there you may use your arrow keys to move through menus and options, and your return key to select options.

Anomaly : AppleTalk Statistics Window does not get redrawn

Platform: PC only

PIN Number: p126

Description: The list of interfaces in the AppleTalk Statistics Main Window does not get redrawn correctly when another window from the AppleTalk Stats is made the active window and then dismissed. Not all interfaces get redrawn.

Work Around: Do not select another window until all data is appears in the main statistics window.

Anomaly : CSMACD collision errors values missing

Platform: PC only

PIN Number: p143

Description: There are no values displayed under the Collision Errors field in the CSMACD Miscellaneous Error Statistics Window.

Work Around: This anomaly will be fixed in a subsequent release.

Anomaly : Entering Source Routing and IP NTWK Ring Numbers

Platform: PC only

PIN Number: p147

Description: The Conn. IP NTWK Ring number and the Source Routing Ring Number should both be entered in hex.

Work Around: Even though it appears that you should enter these values in decimal, you must enter the Conn. IP NTWK Ring Number and the Source Routing Ring Number in hex.

Anomaly : Adding SMDS to SYNC doesn't change line defaults

Platform: PC only

PIN Number: p149

Description: Adding SMDS or Frame Relay to a SYNC or HSSI circuit does not change the line defaults to the correct values.

Work Around: Access the line defaults window for either the SYNC or HSSI line and manually change the values.

Anomaly : No accelerator keys for Admin menu items

Platform: PC only

PIN Number: p120

Description: There are no accelerator keys for the items under the Admin menu in the main Wellfleet Site Manager Window: Boot, Reset and Ping.

Work Around: Use your mouse. Or, type the command Alt-F, which puts you in the menu bar. From there you may use your arrow keys to move through menus and options, and your return key to select options.

Anomaly : No accelerator keys for the Protocols menu items

Platform: PC only

PIN Number: p122

Description: There are no accelerator keys for the items under the Protocols menu in the main Wellfleet Site Manager Window.

Work Around: Use your mouse. Or, type the command Alt-F, which puts you in the menu bar. From there you may use your arrow keys to move through menus and options, and your return key to select options.

Anomaly : Trap Monitor problems

Platform: PC only

PIN Number: p125

Description: The Trap Monitor columns for slot and entity are incorrect. The slot column seems to be giving the number of entity, while the entity column shows “unknown” for everything.

If you are performing other actions while traps are being drawn into the window, the traps do not always get full timestamps drawn. The timestamps do get redrawn if you scroll a full screen away and then come back.

The month abbreviation sometimes shows up as just a comma character. Clicking and dragging over it makes the month abbreviation appear.

Work Around: This anomaly will be fixed in a subsequent release.

Documentation Errata

This section describes identified errors in the document set. Update pages correcting these errors will be distributed in the near future.

Quick-Start Guide

- In step 7, on page 3-9 of the **Quick-Start Guide**, you are incorrectly instructed to:
 - enter **c:\w\bin\wfsm.exe** in the Command box
 - enter **c:\w\bin** in the Working Directory box

This will not work if you are installing the Site Manager on a PC. You must remove the word bin from the command strings; instead, you must:

- enter **c:\wf\wfsm.exe** in the Command box
- enter **c:\wf** in the Working Directory

Configuring System Software Volume I

- Page 1-1 of the *Configuring System Software Guide Volume I* incorrectly states that the Site Manager installation procedure is described in the Site Manager release notes. The installation procedure is actually described in the *Quick-Start* guide, in the chapter entitled *Installing the Site Manager Software*.
- Pages 6-22 and 6-23 of the *Configuring System Software Guide Volume I* describes how to configure the AppleTalk router to source route over token ring networks. This feature is currently unavailable for the AppleTalk router; thus the corresponding documentation is invalid.
- When describing how to specify a Ring ID for a backbone IP network, Page 8-30 of the *Configuring System Software Guide Volume I* incorrectly states:

To do this, specify the IP network's Ring ID at the Conn. IP NTWK Ring Number parameter for each source routing *interface*.

It should read as follows

To do this, specify the IP network's Ring ID at the Conn. IP NTWK Ring Number parameter for each source routing *bridge*.

- The following Source Routing interface parameter was not documented. The parameter is located at the bottom of the Source Routing Interface Parameters Window (see Figure 8-19 in the *Configuring System Software Guide Volume I*) and functions as follows:

Parameter : IP Address

Wellfleet Default: None

Options: Any valid IP address

Function: Shows the IP address that is currently assigned to this interface. (If one is not assigned, then this field will display 0).

This parameter is used in conjunction with the IP Encaps parameter to map Ring IDs to IP addresses.

Instructions: If you simply accept the IP address displayed, then the Ring ID maps to the IP address shown here.

If you wish to change the Ring ID mapping to the outgoing IP interface, then enter 0.0.0.0 at this field.

Note: If IP is not yet enabled on this interface, then anything you enter here will be overwritten when you configure IP.