

AT MICROFICHE
REFERENCE
LIBRARY

A project of Volunteers in Asia

Small Corn Sheller
VITA Technical Bulletin No. 21

by: Bertrand Saubolle, S.J.

Published by:
Volunteers in Technical Assistance
1815 North Lynn St. Suite 200
P.O. Box 12438
Arlington, VA 22209 USA

Paper copies are \$ 1.00.

Available from:
Volunteers in Technical Assistance
1815 North Lynn St. Suite 200
P.O. Box 12438
Arlington, VA 22209 USA

Reproduced by permission of Volunteers in
Technical Assistance.

Reproduction of this microfiche document in any
form is subject to the same restrictions as those
of the original document.

VITA

TECHNICAL BULLETIN 21

Small Corn Sheller

BERTRAND SAUBOLLE S. J.

This small corn sheller is about the size of a kitchen meat grinder, and is very easy to build and to operate. Hob-nail studs on a solid wood drum scrape the kernels from the ears of corn.

The sheller design was provided by Father Bertrand Saubolle, S. J., of the Godavari School in Kathmandu, Nepal. Father Saubolle has done extensive work with small implements, methane digesters, ovens, etc., and is the author of several other Technical Bulletins.

Please send testing results, comments, suggestions and requests for further information to:

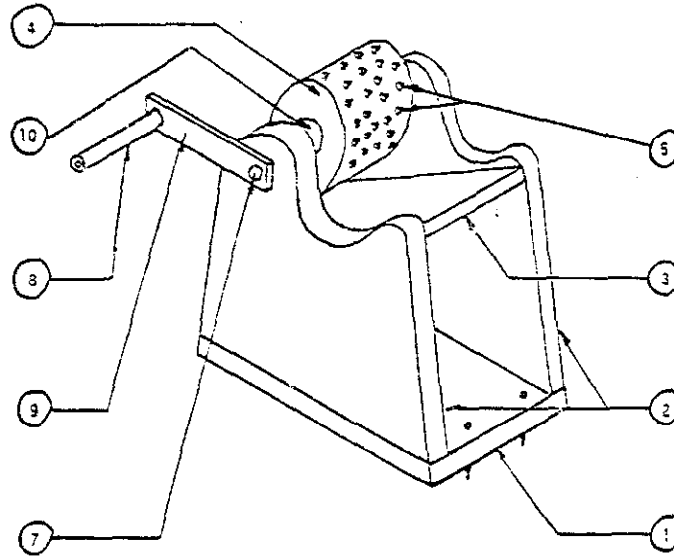
Technical Bulletins
VITA Publications Service
3706 Rhode Island Avenue
Mt. Rainier, MD 20822 USA

**VOLUNTEERS
IN TECHNICAL
ASSISTANCE**

3706 Rhode Island Avenue

Mt. Rainier, Maryland, USA 20822

This corn sheller is small, comparable in size to a kitchen meat mincer. It is light, extremely simple to construct and to operate. It can very easily be made in any village where there is a blacksmith and a carpenter. It will handle corn up to 10 inches in length.



Requirements

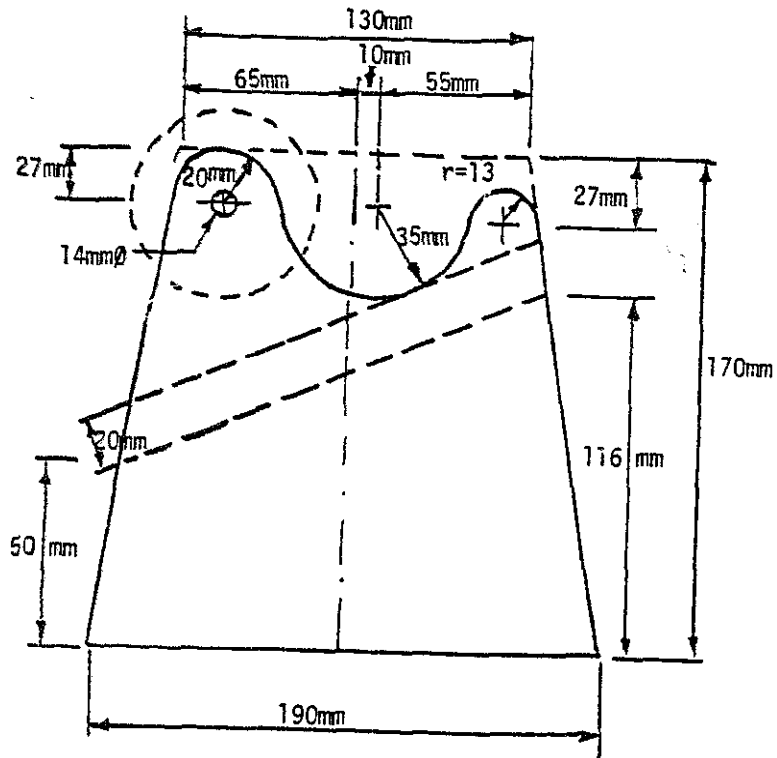
- ① 1 bottom board, 190 x 190 x 20mm
 - ② 2 side boards, 170 x 190 x 20mm
 - ③ 1 sloping board, 175 x 110 x 20mm
 - ④ 1 solid wooden drum 80mm long, 70mm \varnothing
 - ⑤ 50 hob nails
 - ⑥ 12 screws, 30mm
 - ⑦ 1 spindle, rod 175 x 10mm \varnothing
 - ⑧ 1 handle, rod 100 x 10mm \varnothing
 - ⑨ 1 metal strip connecting handle to spindle, 110 x 20 x 6mm
 - ⑩ 2 wooden spacers, one on either side of drum, 14 x 25mm \varnothing
- Note: \varnothing = diameter.
- . 1 washer & split pin for fixing spindle
 - . 2 metal bushers for spindle
 - . 1 (plastic) pipe over handle rod

The construction is so simple that it needs no explanation, however one or two remarks are in order. The hob nails are driven into the drum at random, spaced 20-25mm apart centre to centre. They should not be in straight even rows.

The sloping board is used to rest the corn on. Its top surface should be flush with the curve in the side boards. When screwing the sloping board in position, leave enough room between it and the hob nails to prevent a child's fingers from being crushed.

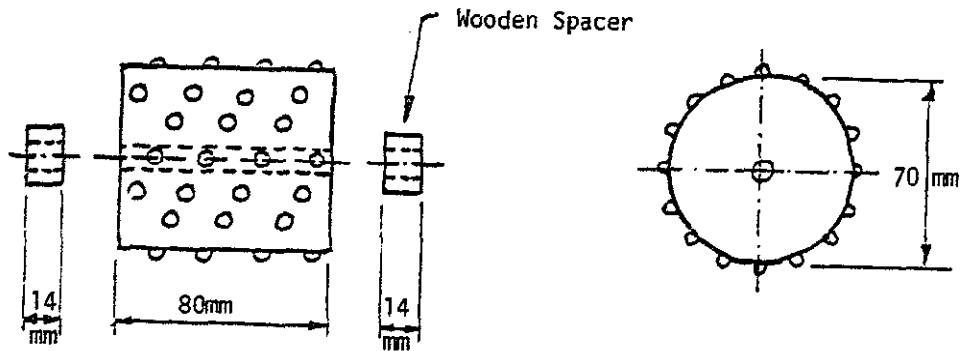
Owing to the small size and lightness of this machine it is a little unsteady when operating. To overcome this put four screws through the base board and let them protrude 10mm. They will catch in the straw or palm mat on which the shelling is invariably done and will hold the machine firm.

SIDE BOARDS

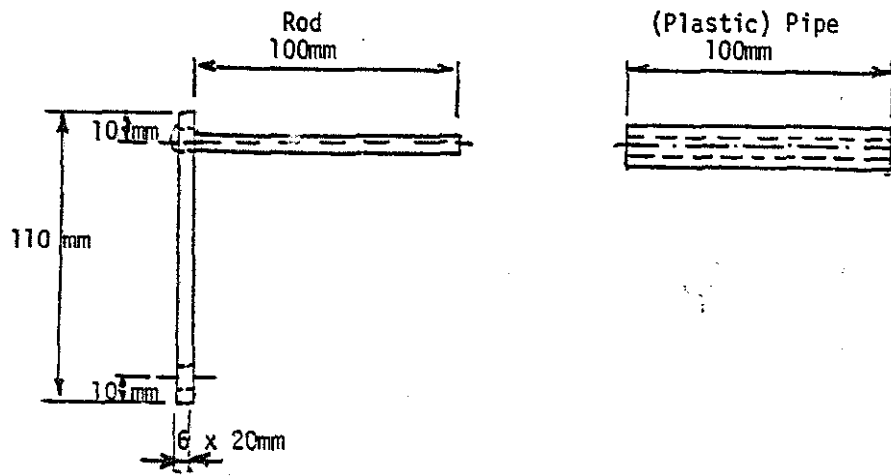


∅ = diameter

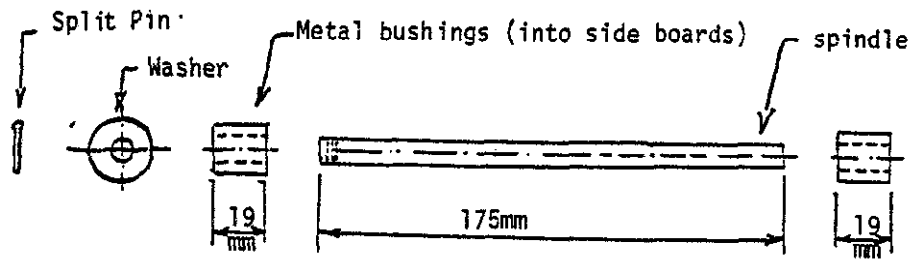
SOLID WOODEN DRUM



HANDLE



SPINDLE



	<u>length</u>	x	<u>breadth</u>
BOTTOM BOARD	190	x	190mm
SLOPING BOARD	175	x	150mm

