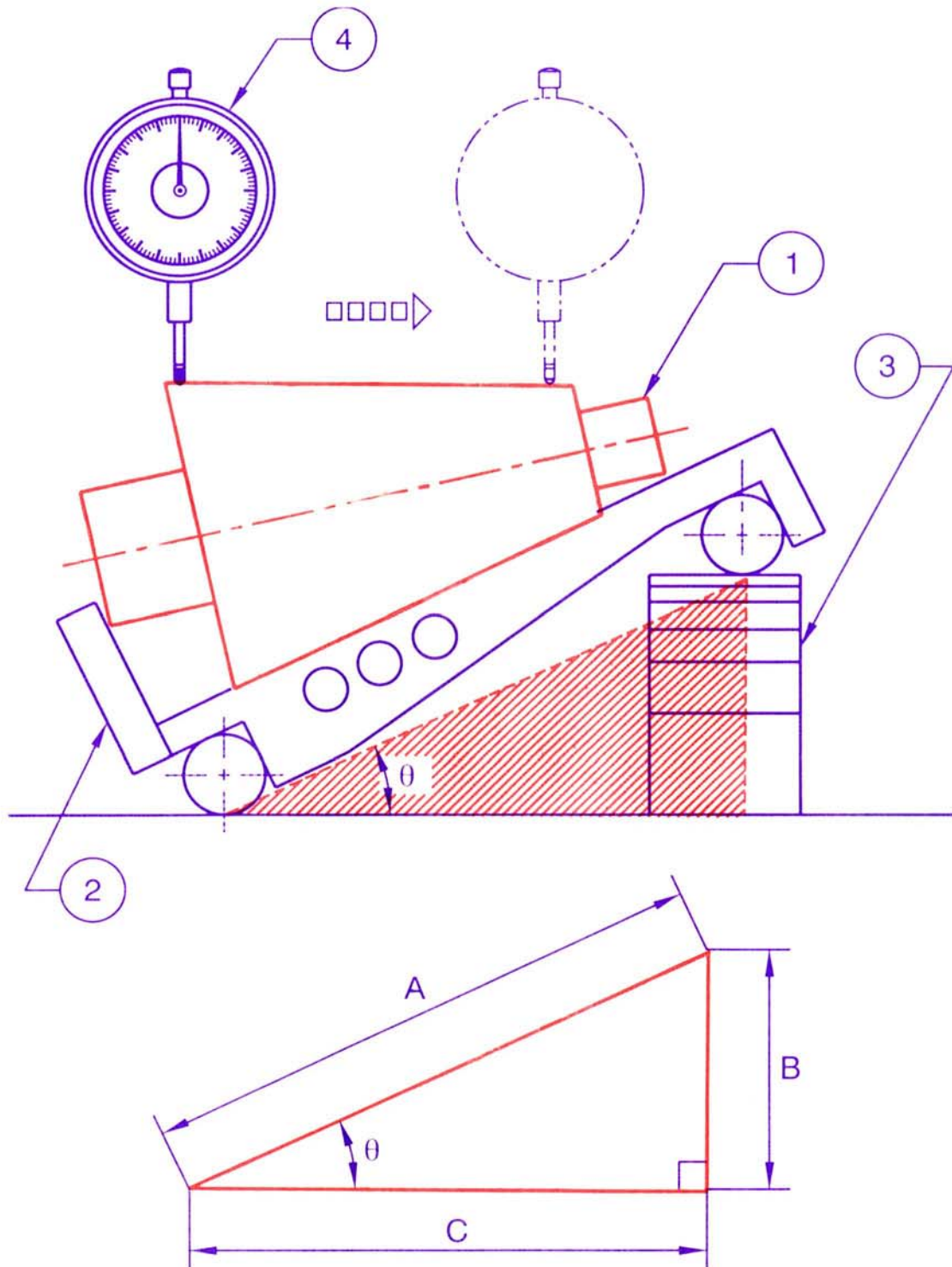


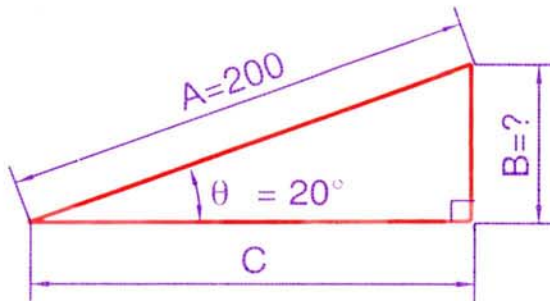


MEASUREMENT OF TAPER ANGLE USING SINEBAR

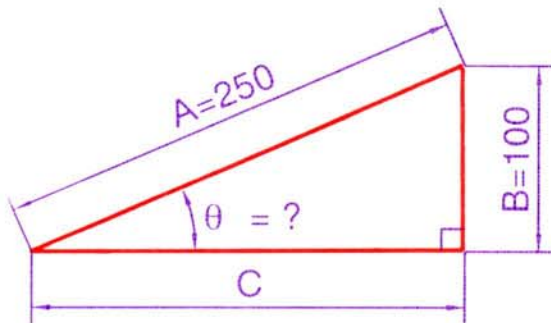




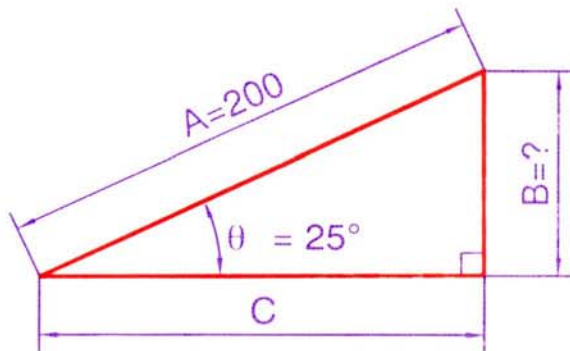
TAPER CALCULATION USING SINEBAR



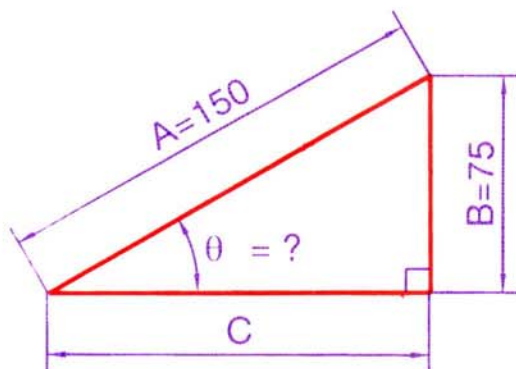
1. What is the height of the slip gauges used?



2. What is the included angle of the tapered job?



3. What is the height of the slip gauges used?



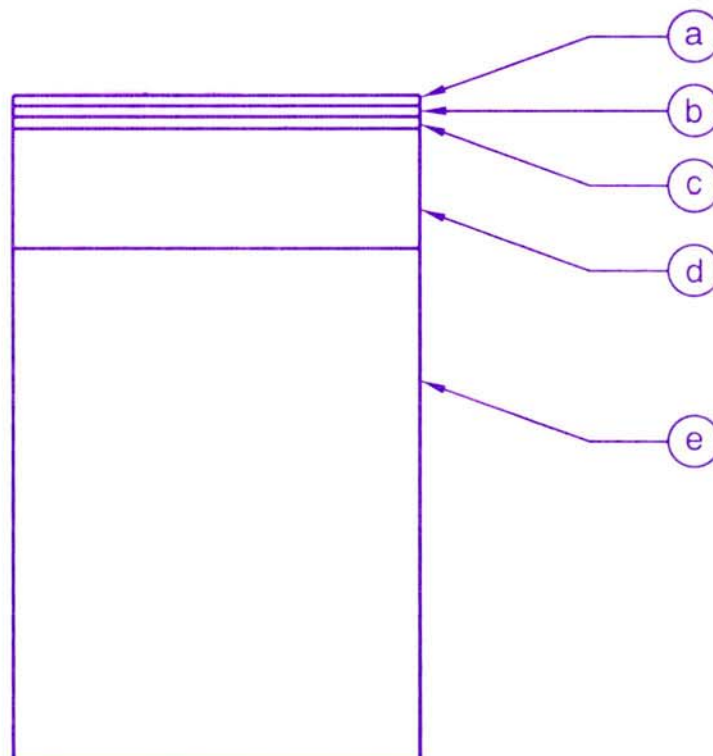
4. What is the included angle of the tapered job?



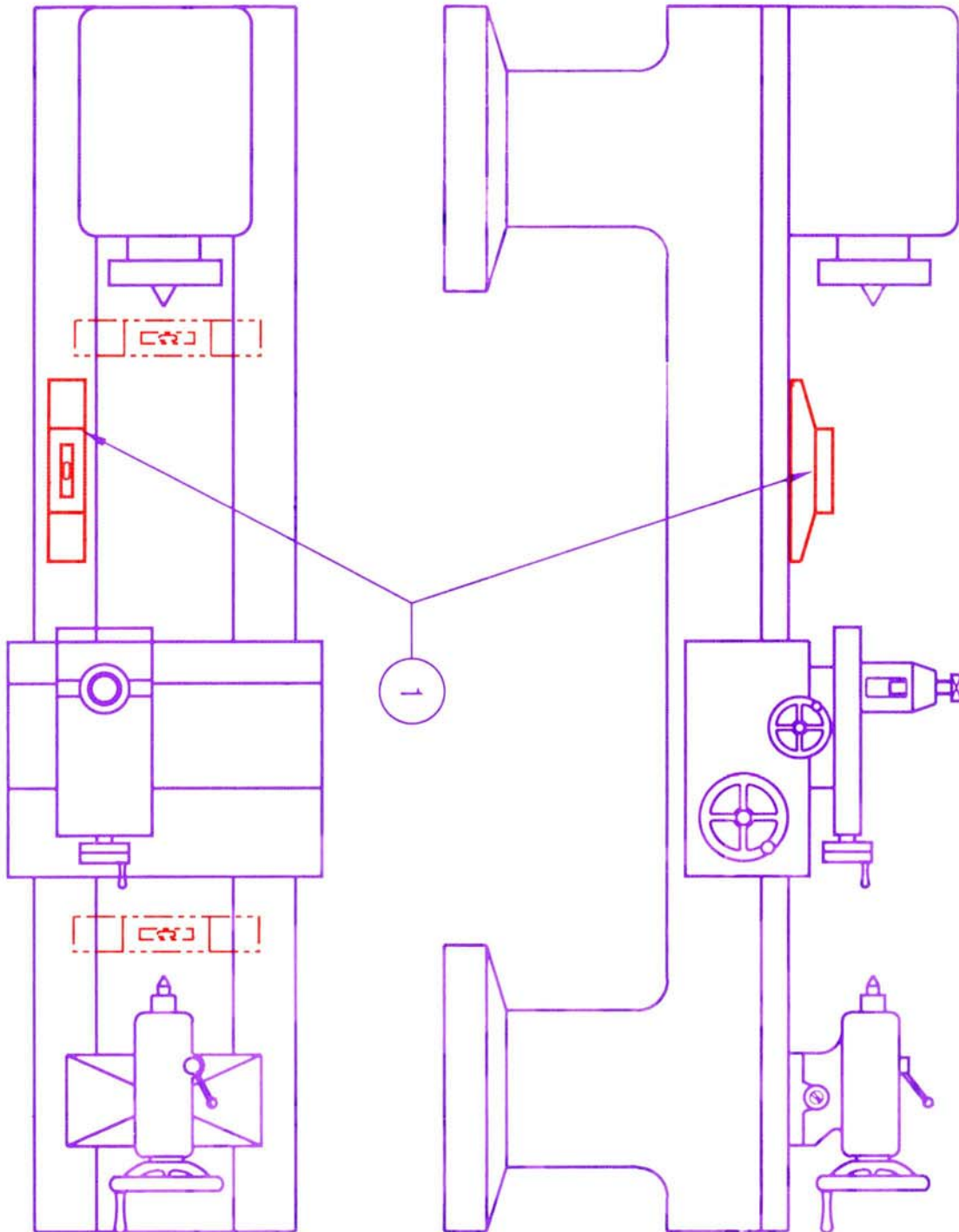
DETERMINING SLIP GAUGE SIZES

Set of 112 pieces

Range (mm)	Steps (mm)	No. of pieces
1.0005	-	1
1.001 to 1.009	0.001	9
1.01 to 1.49	0.01	49
0.5 to 24.5	0.5	49
25 to 100	25	4
Total pieces		112



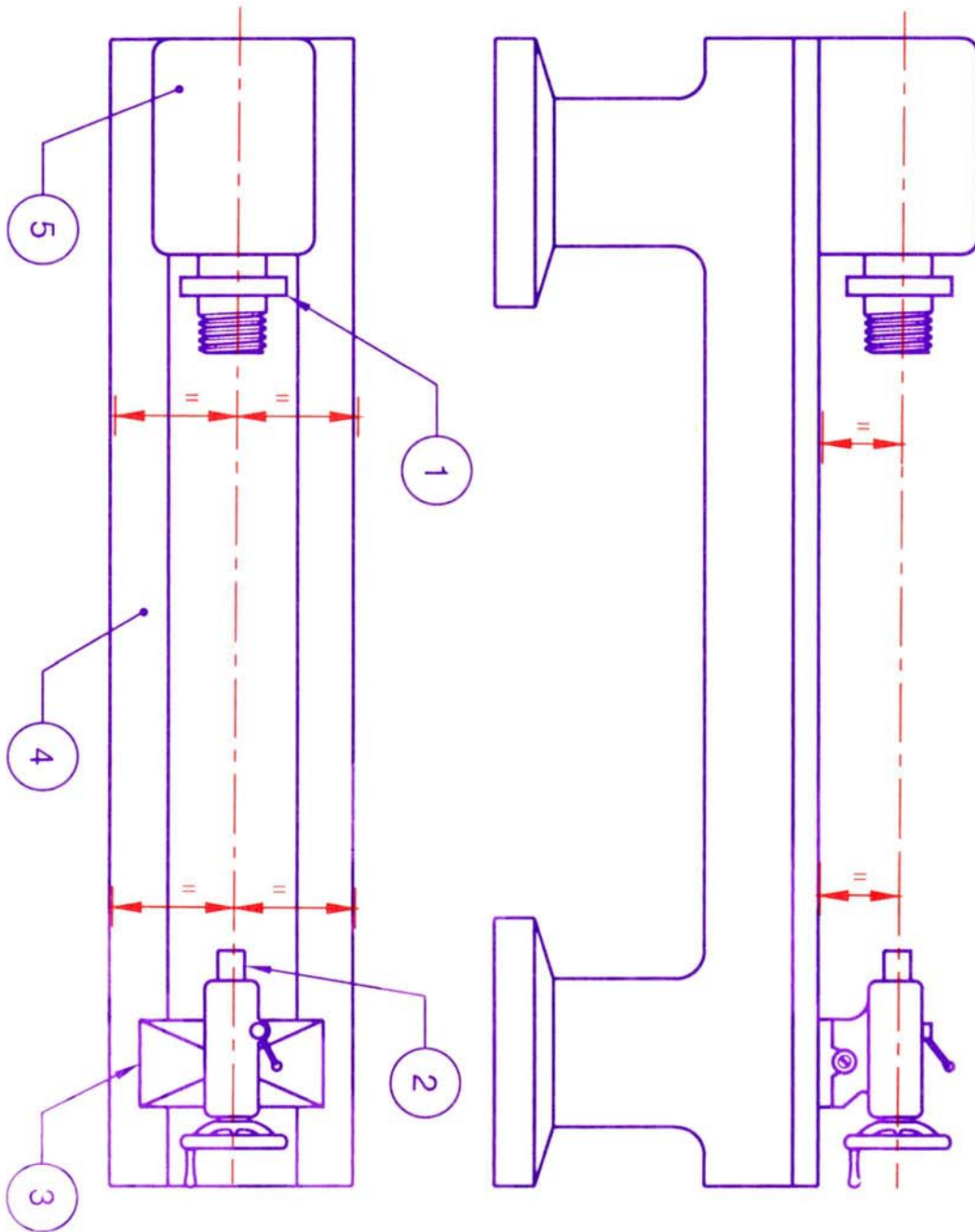
Determine the slip gauges for building up a size of 64.7235 mm.



LEVELLING A LATHE

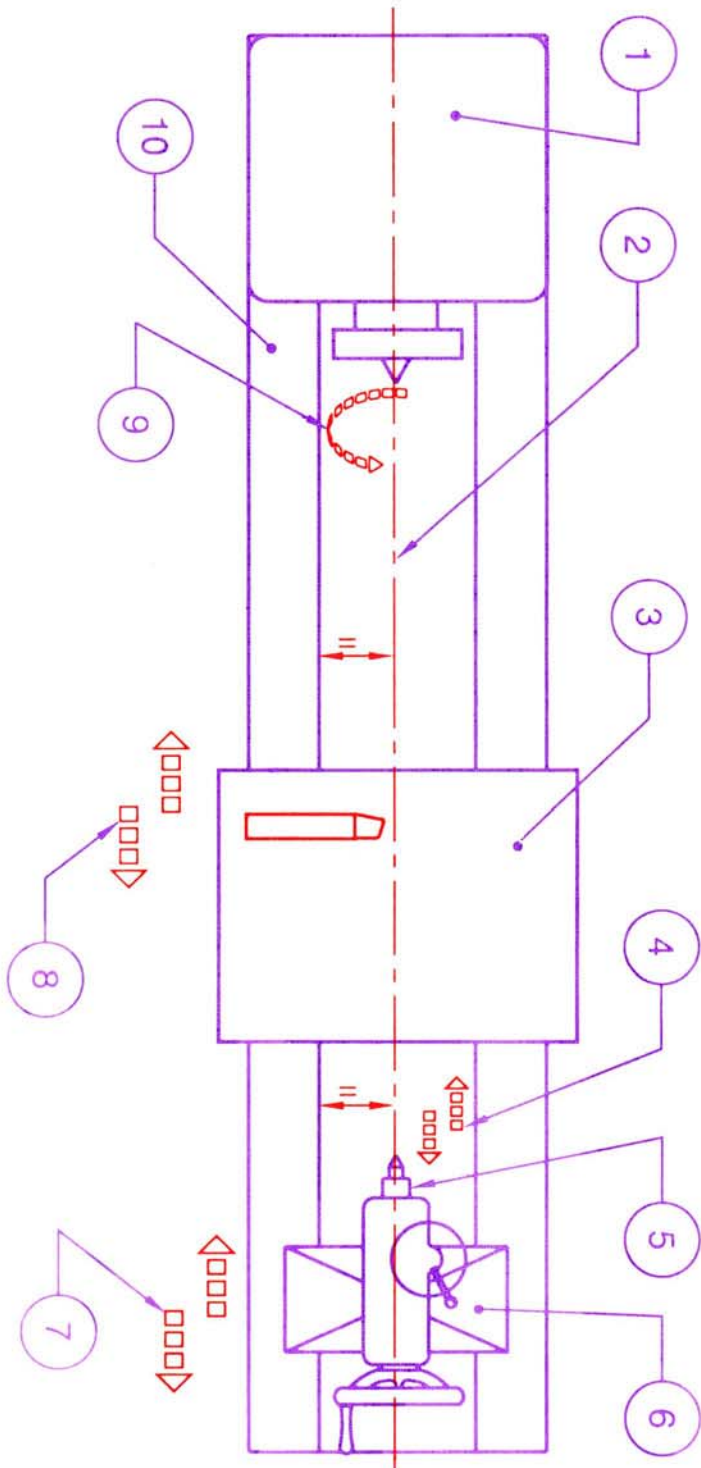


BASIC ALIGNMENTS OF A LATHE



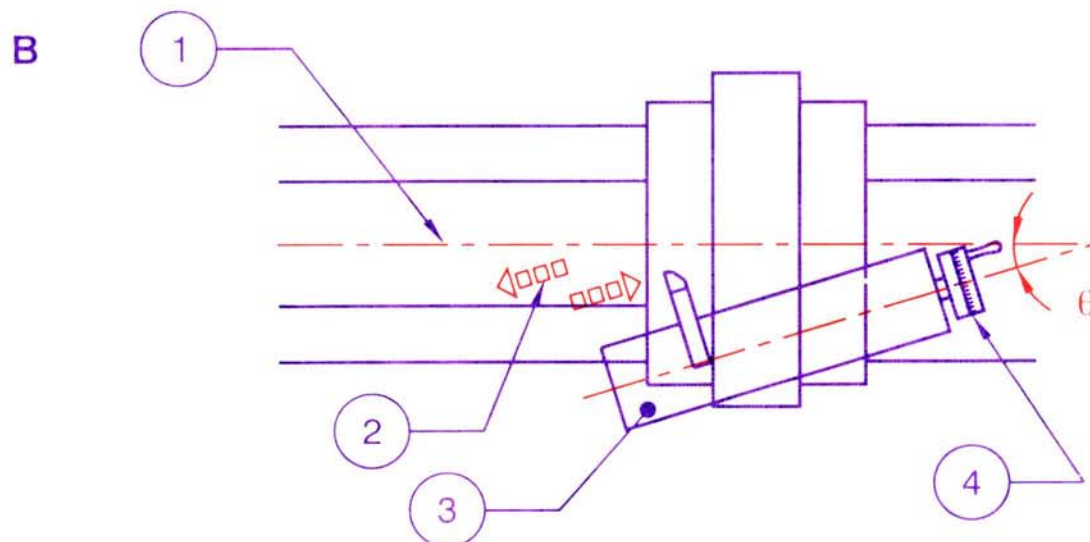
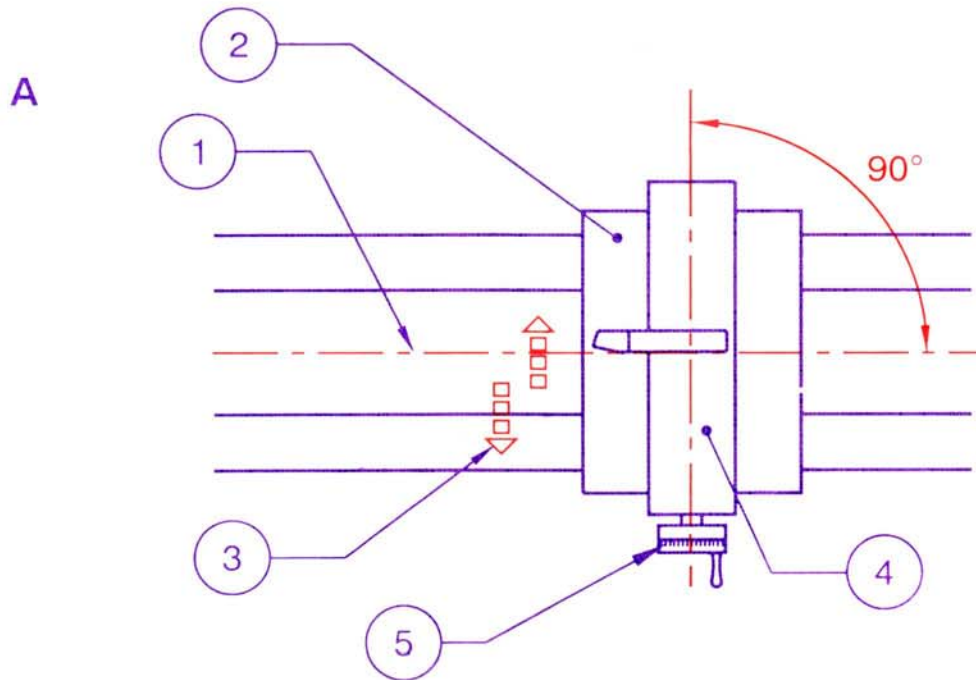


CENTRE LATHE BASIC GEOMETRY - (1)



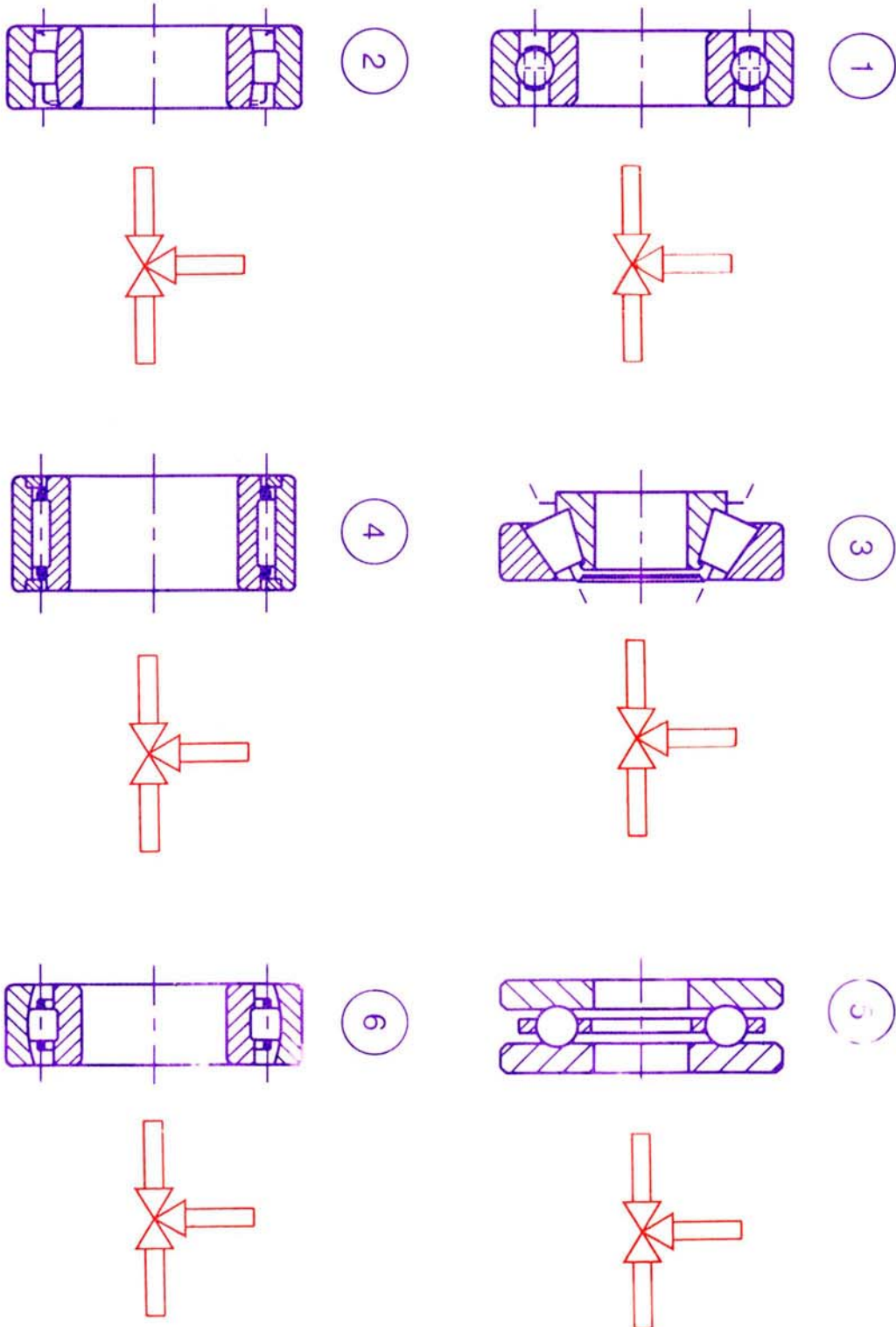


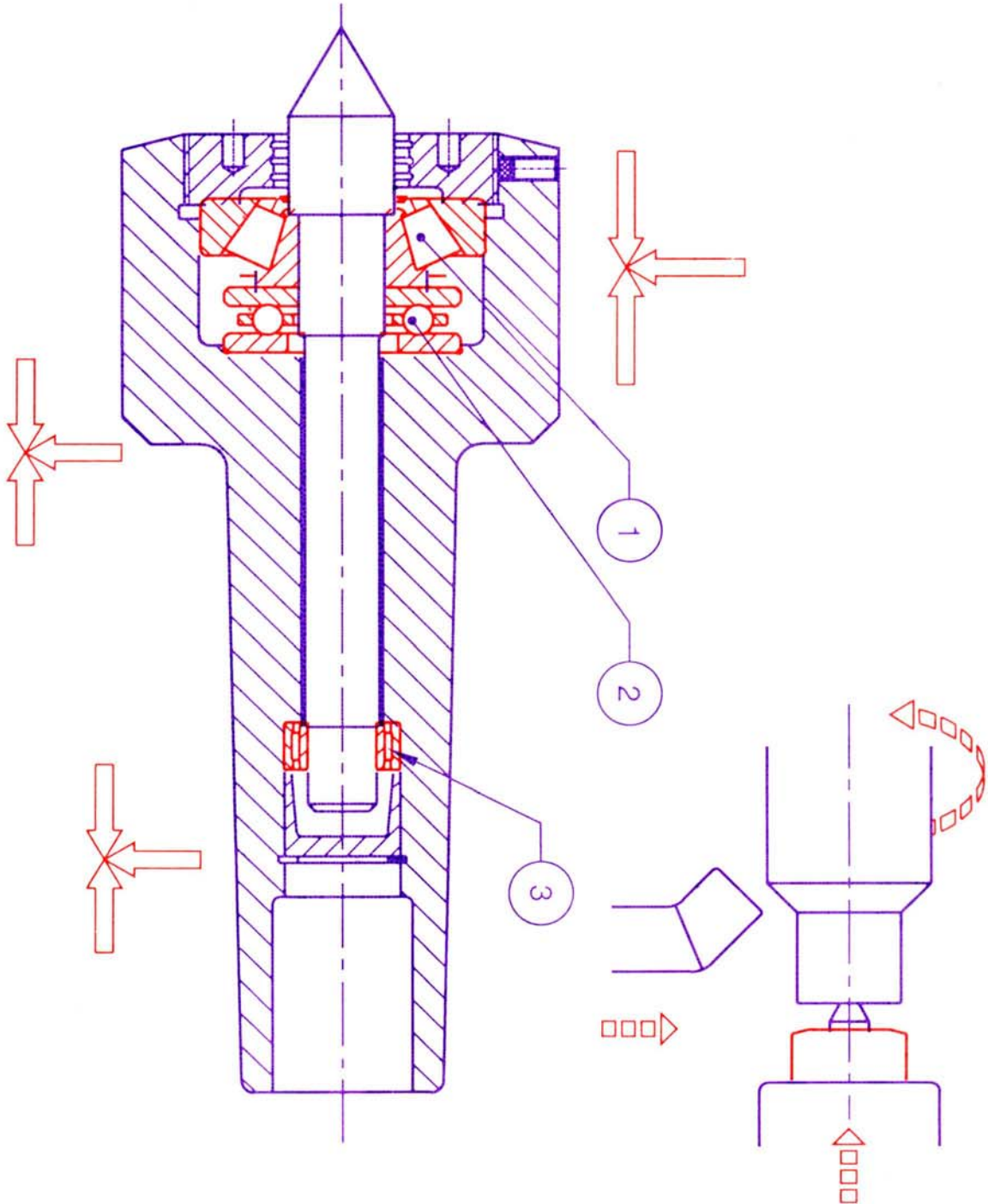
CENTRE LATHE BASIC GEOMETRY - (2)





LOAD CONDITIONS FOR BEARINGS

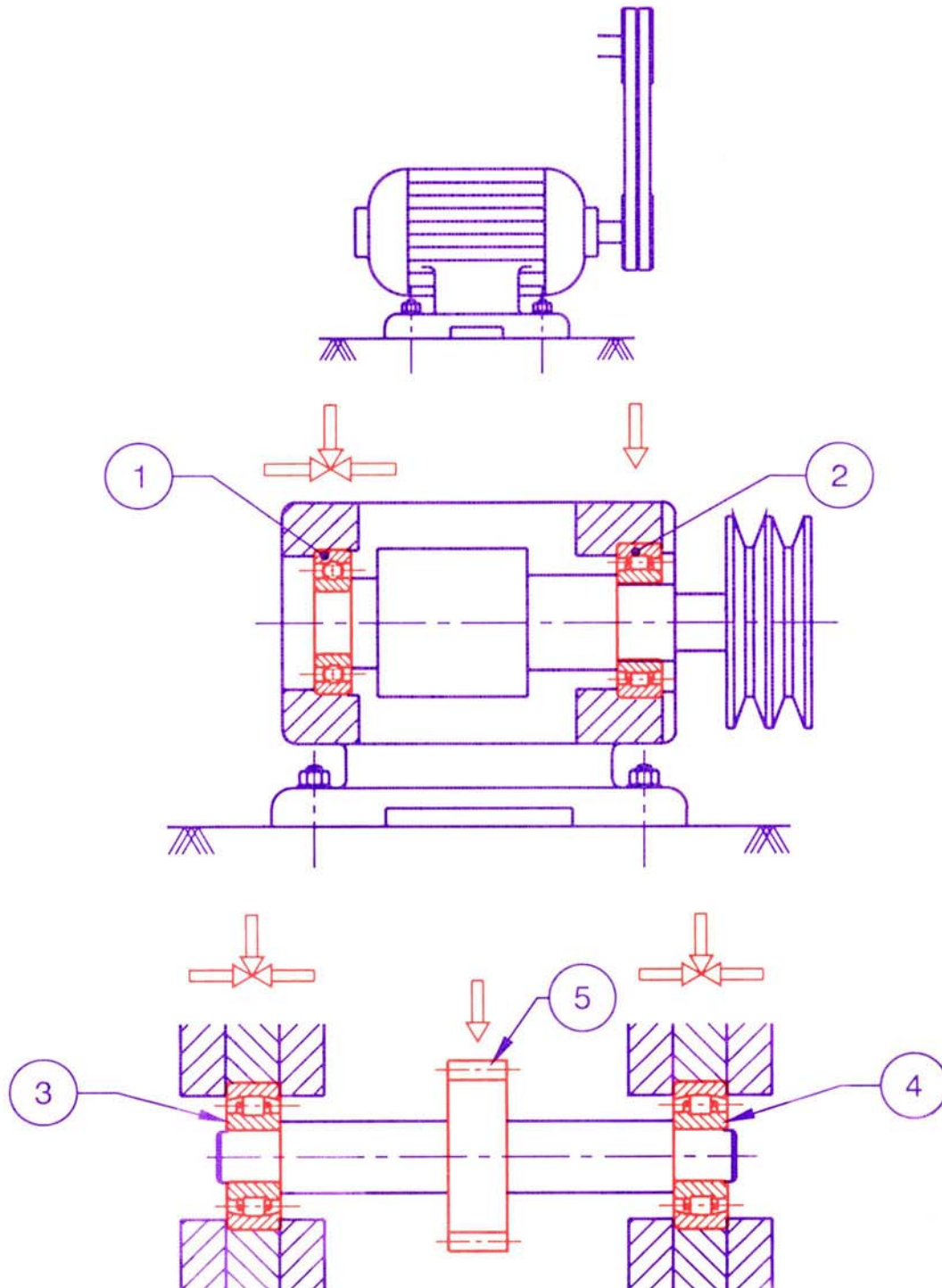




APPLICATIONS OF BEARINGS - (A)

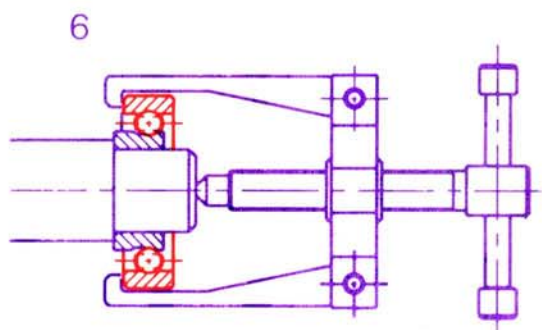
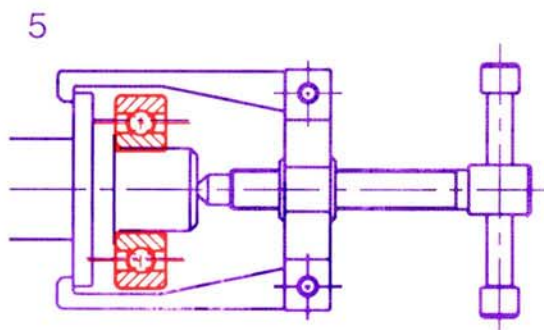
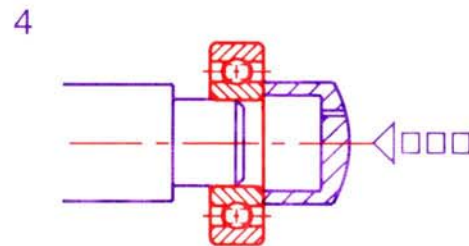
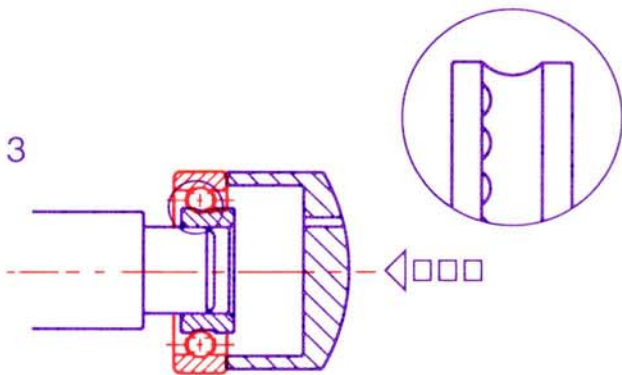
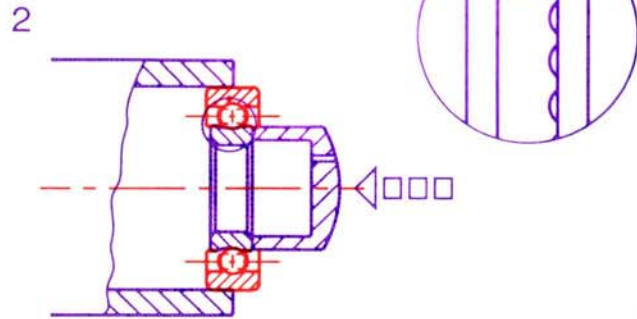
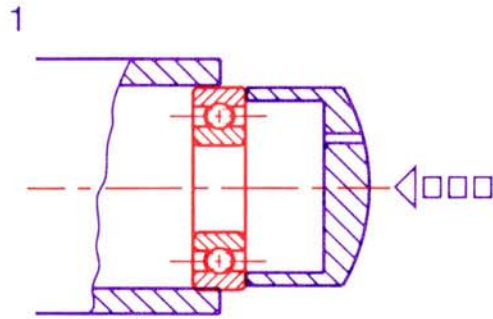


APPLICATIONS OF BEARINGS - (B)

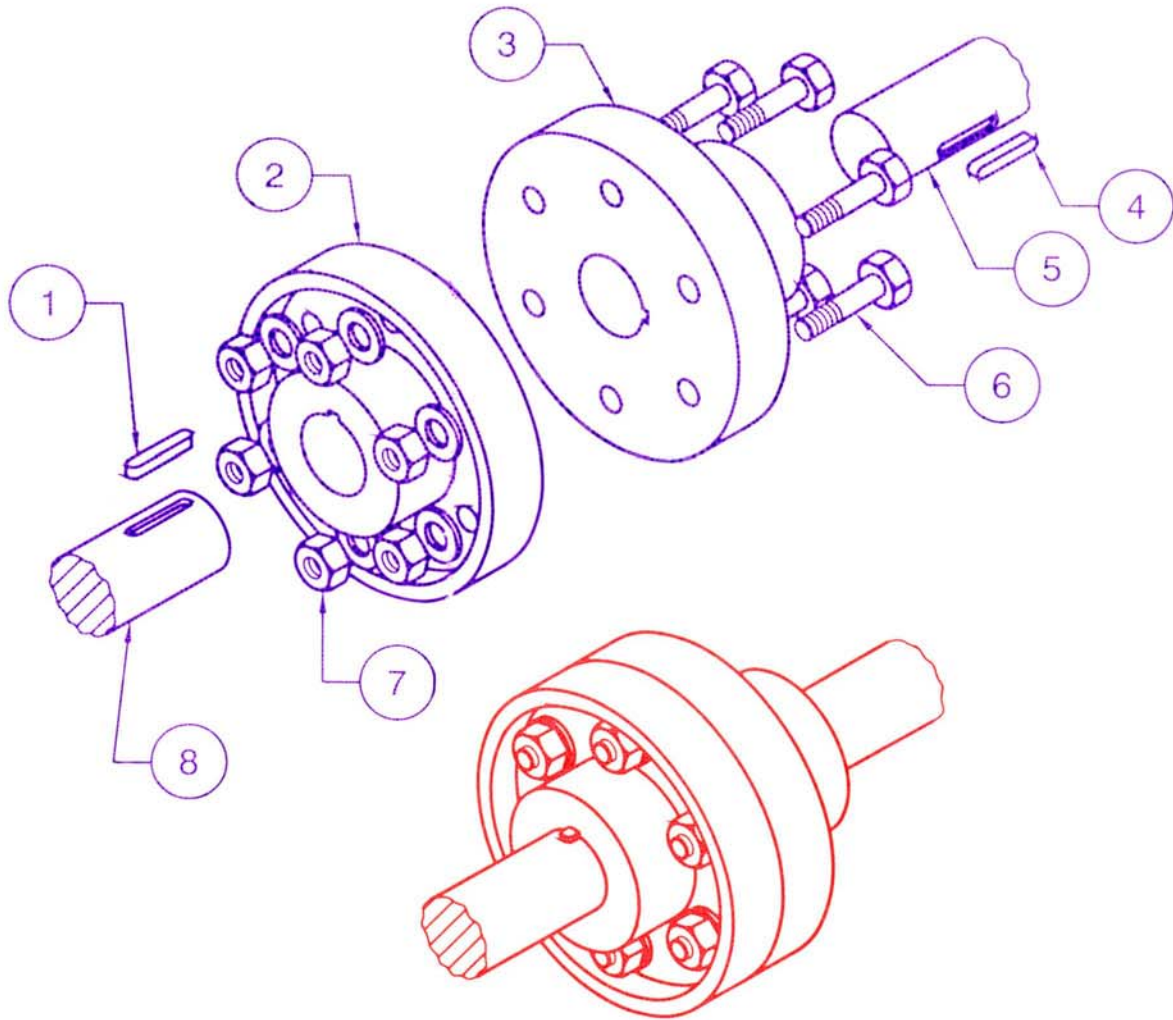
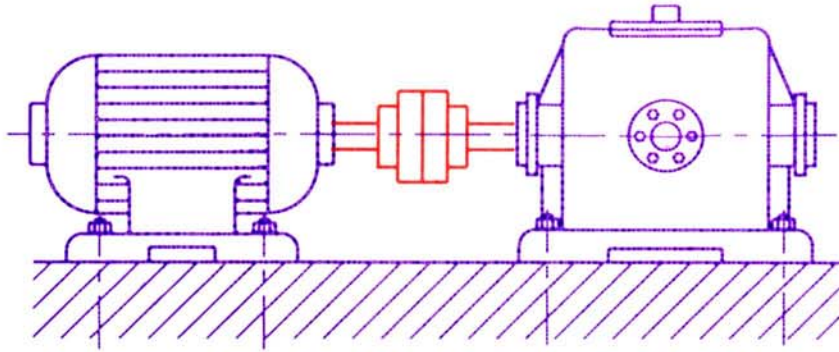




FITTING AND DISMANTLING OF BEARINGS

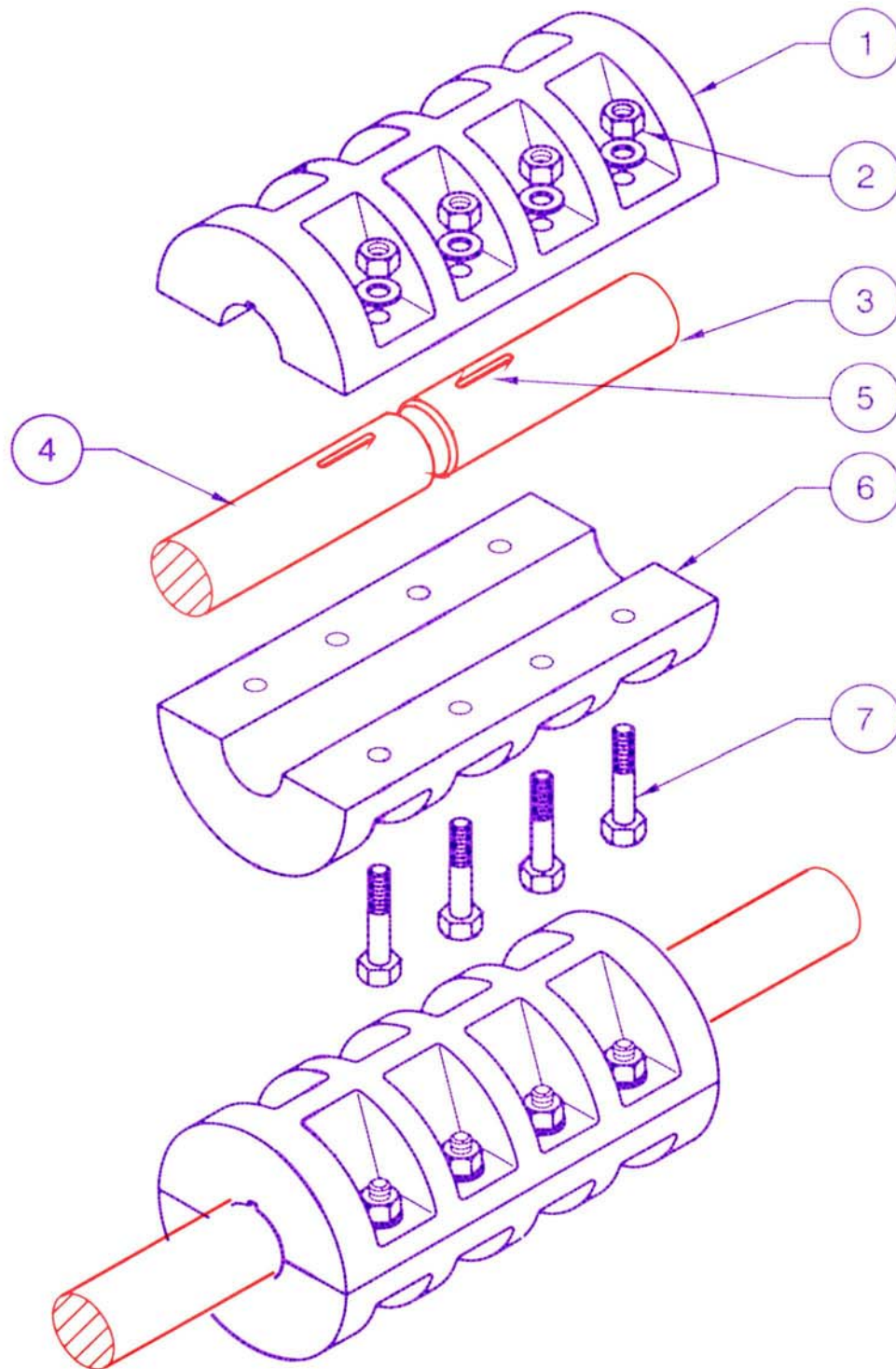


COUPLING ASSEMBLY



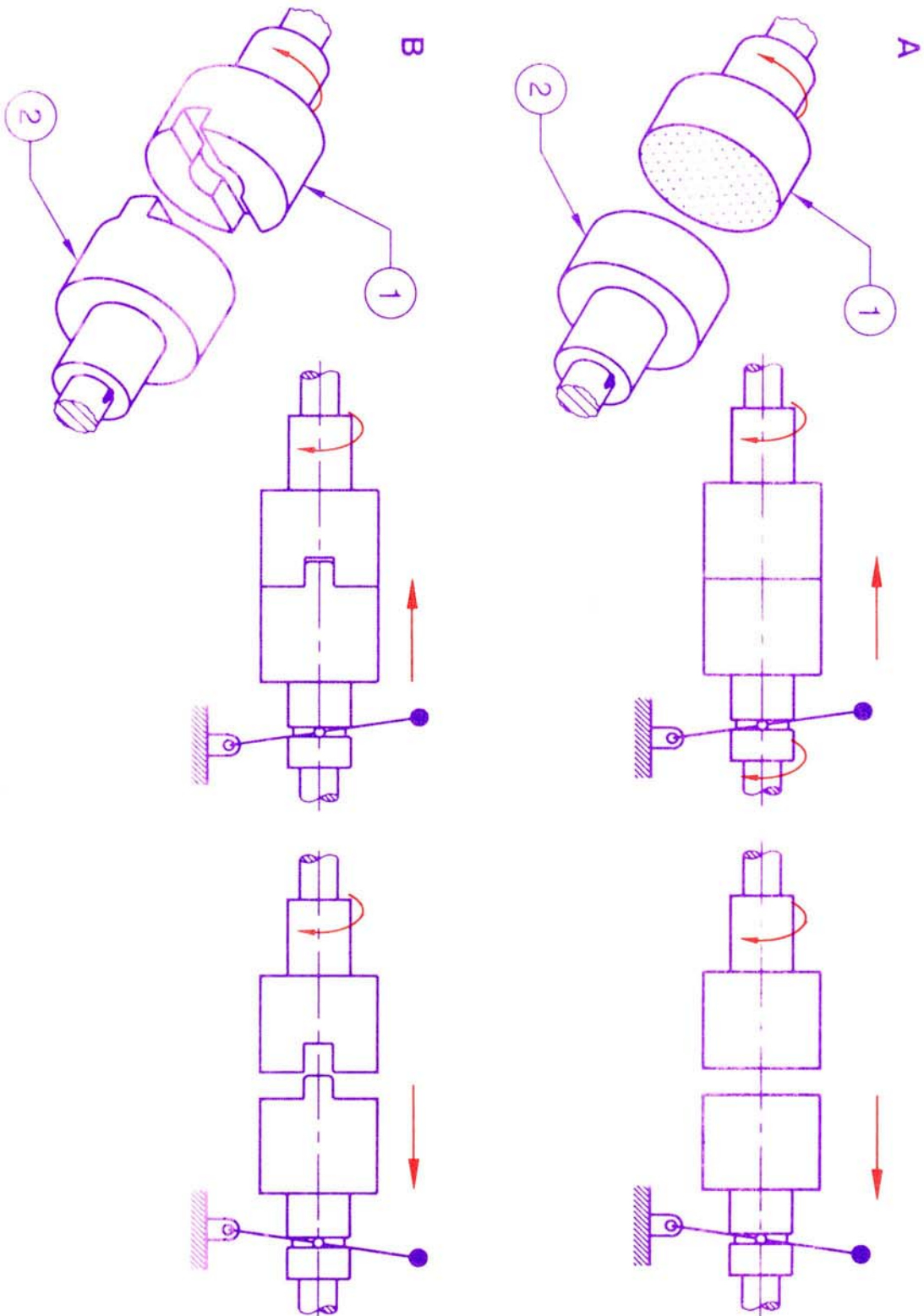


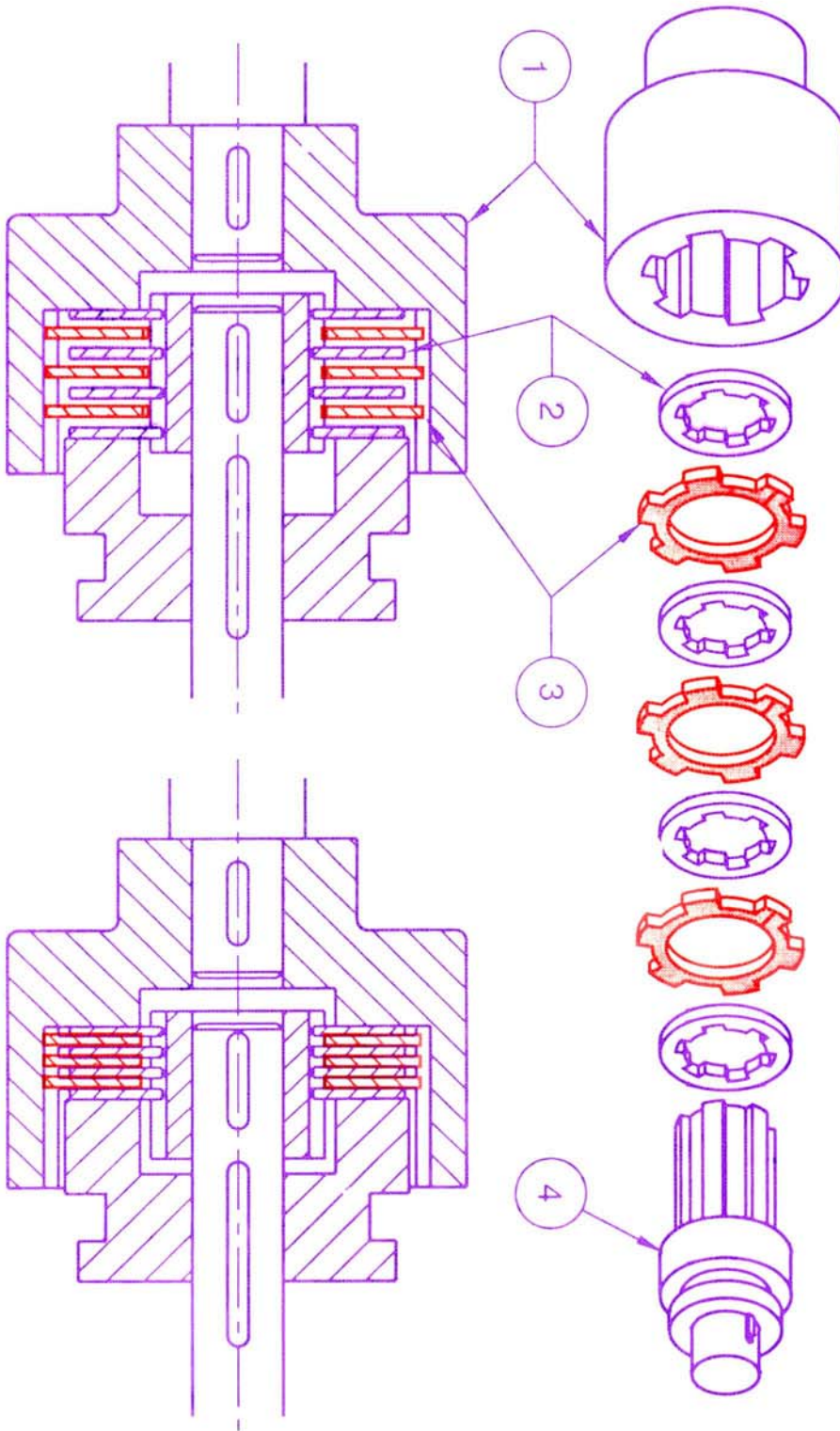
CLAMP COUPLING





APPLICATION OF CLUTCHES (FRICTION AND FORM FITTING)

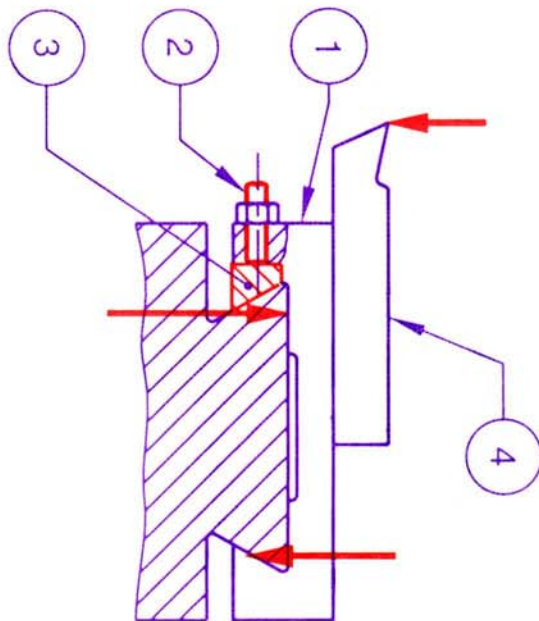
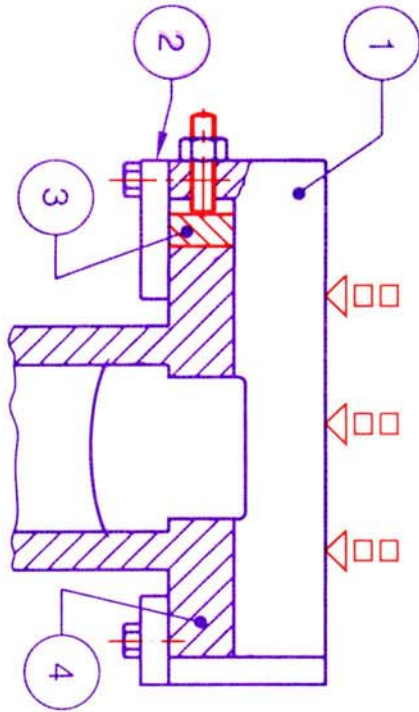
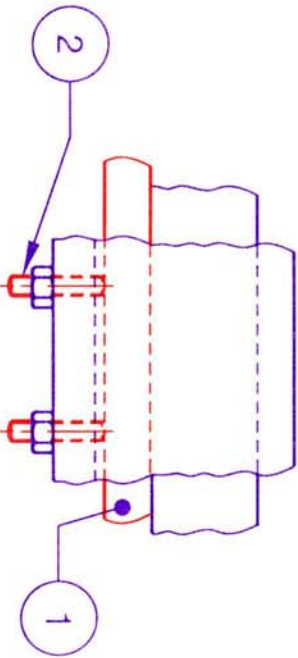
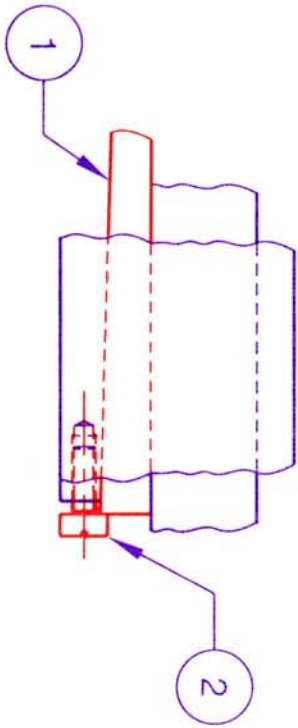




MULTIPLE DISK CLUTCH

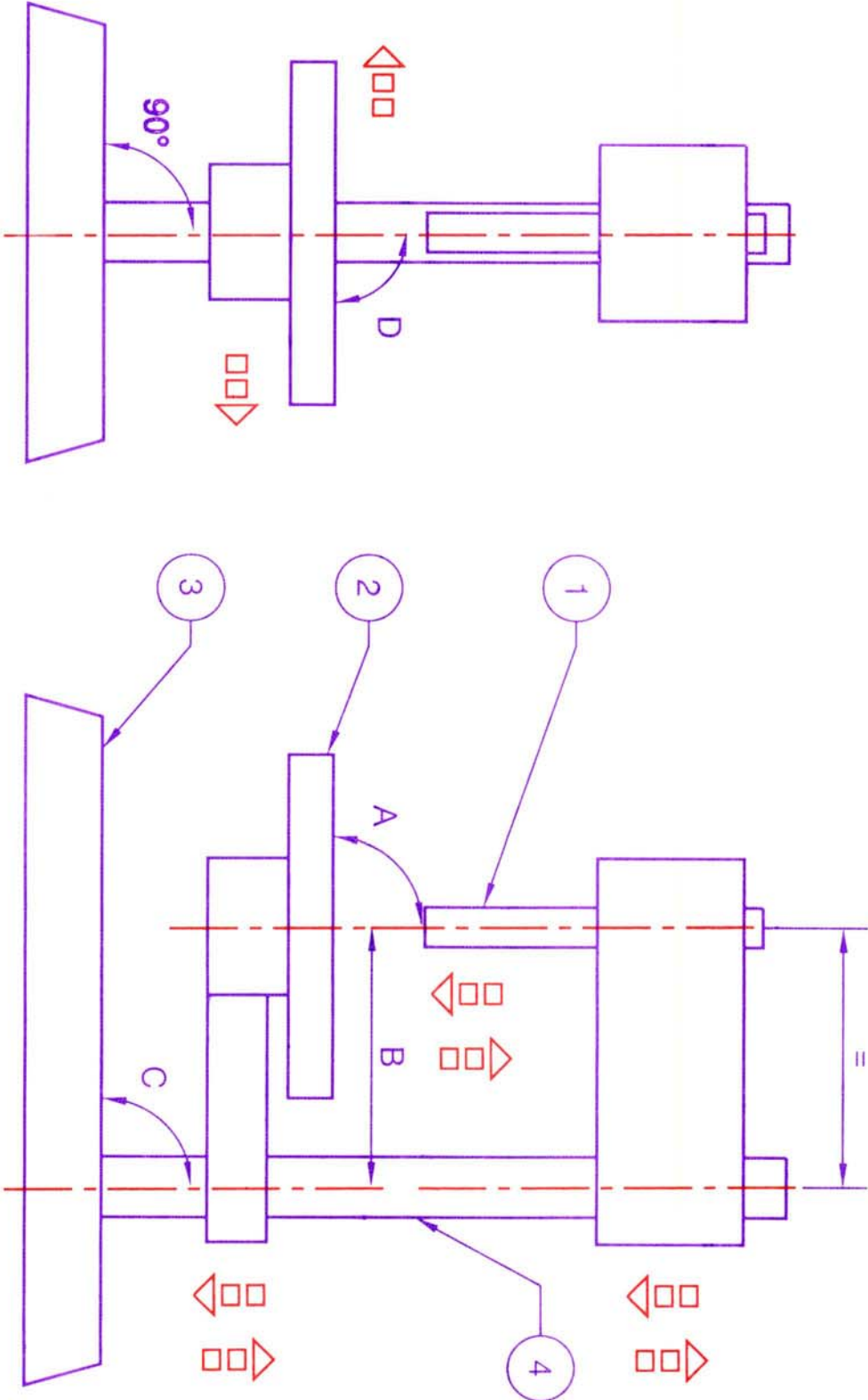


SLIDEWAYS AND WEAR ADJUSTMENT



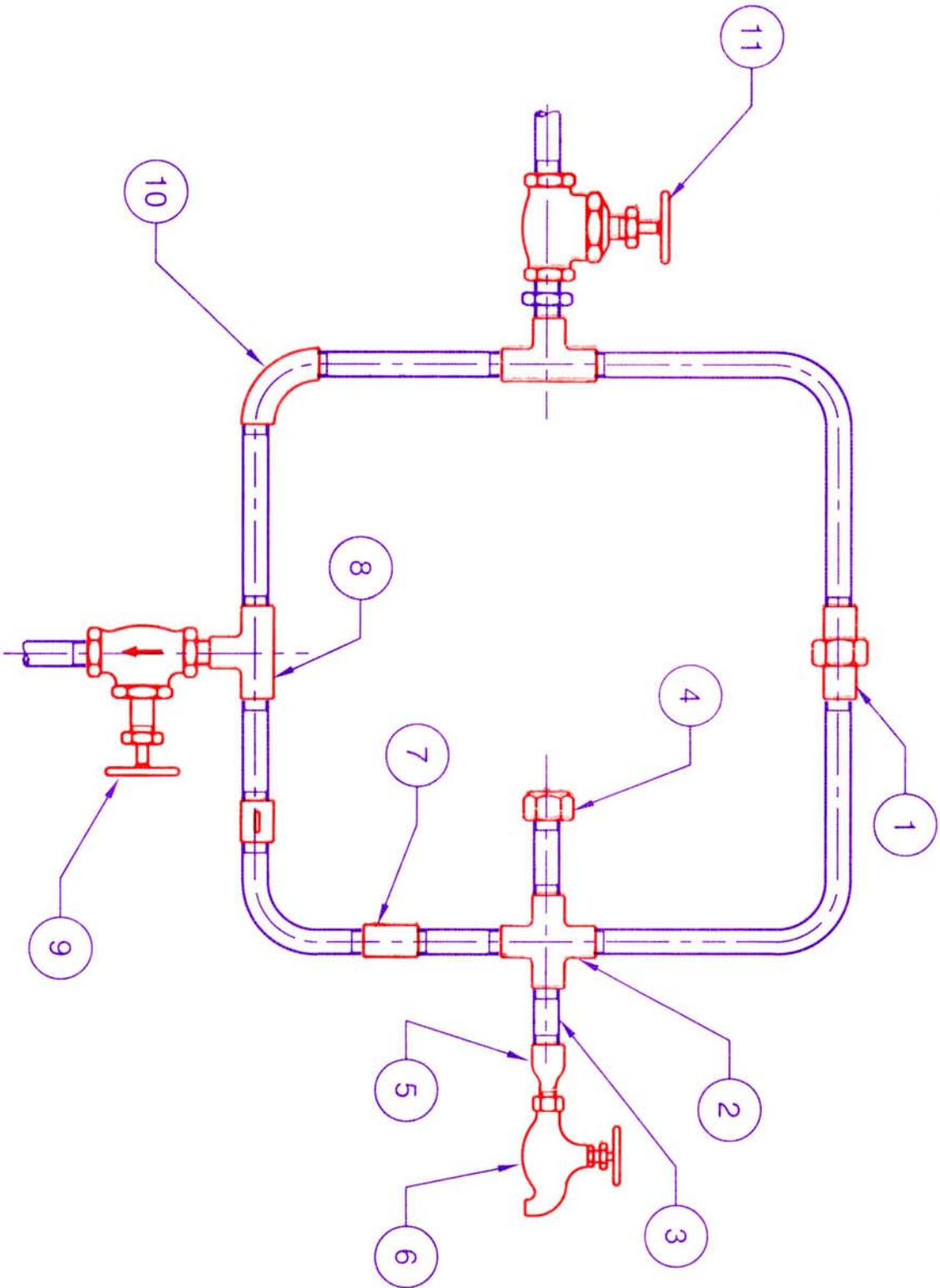


DRILLING MACHINE - ALIGNMENT GEOMETRY





STANDARD PIPE FITTING ASSEMBLY





GLOBE VALVE - PARTS AND FUNCTION

Fig a

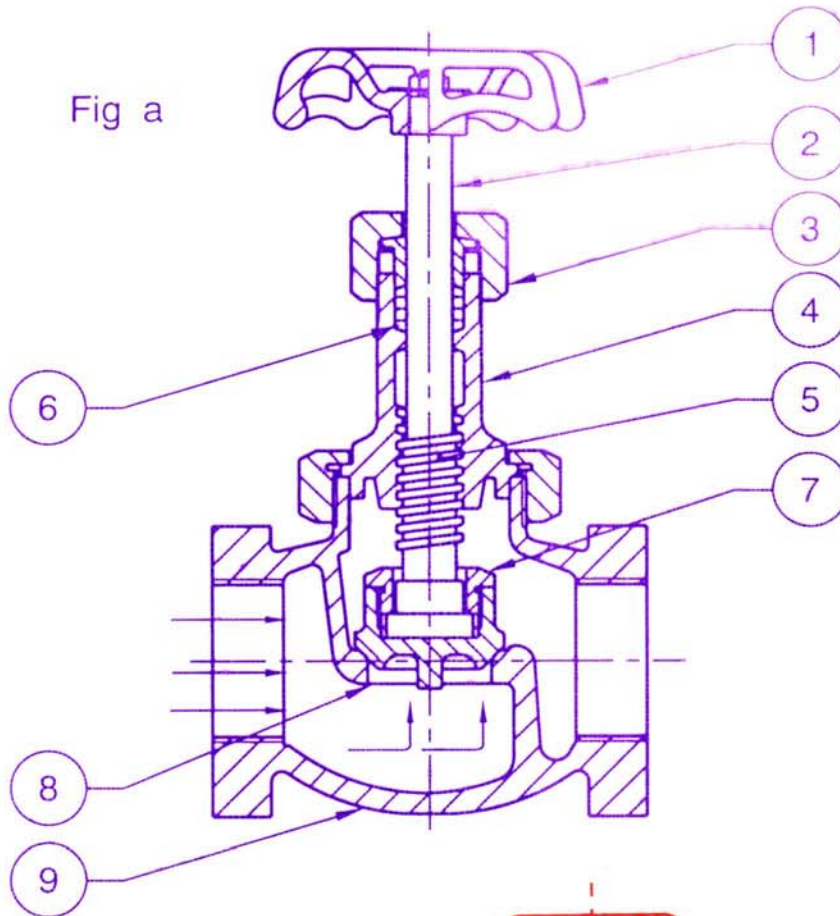
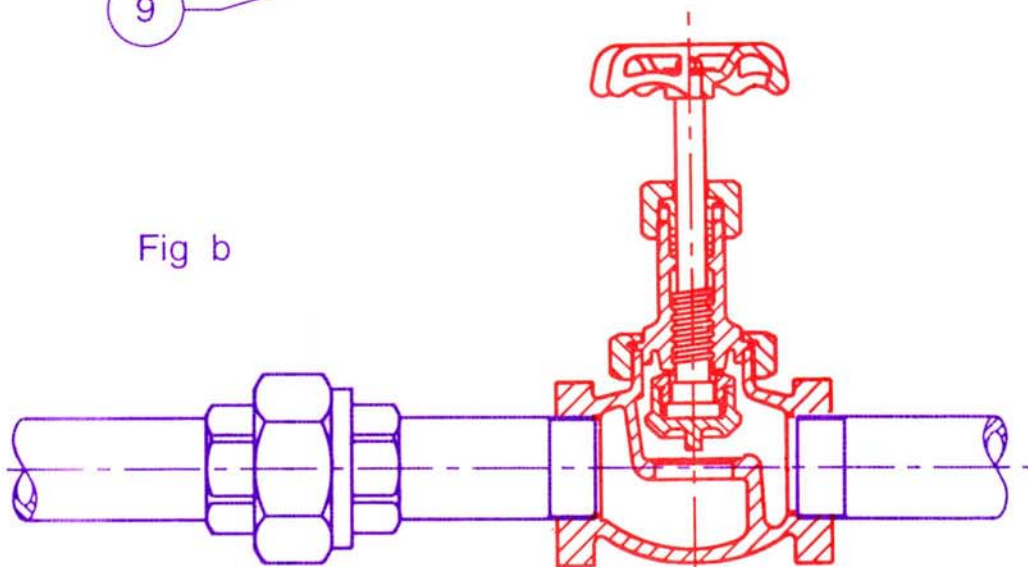
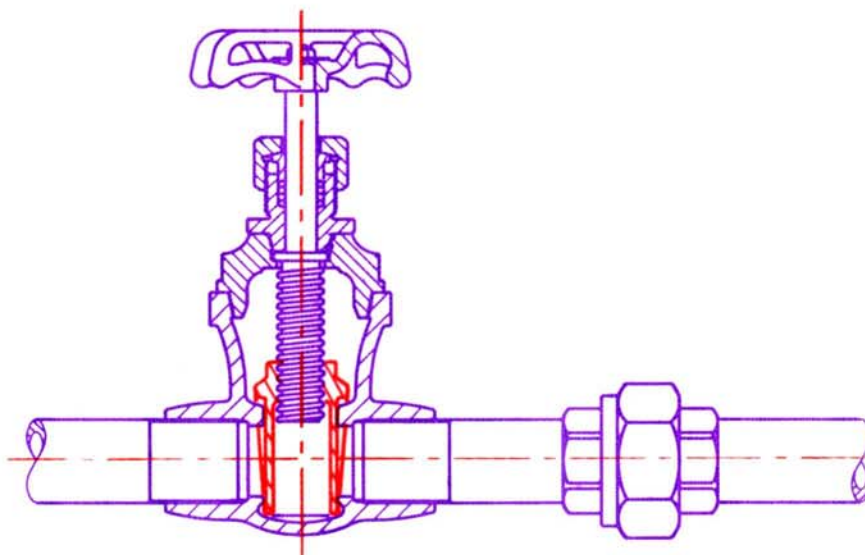
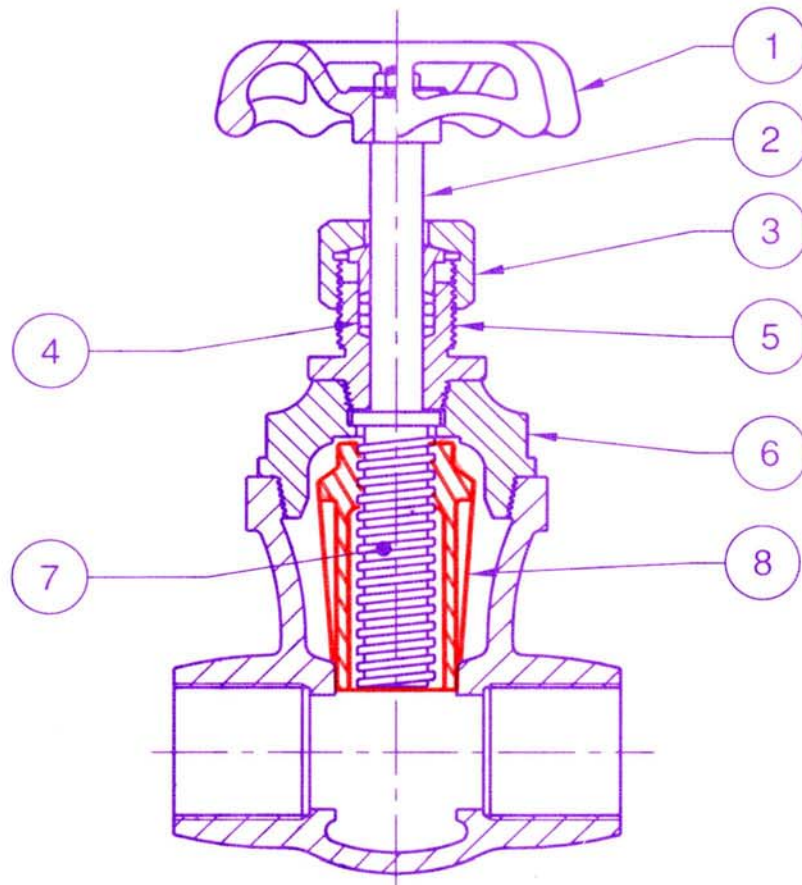


Fig b

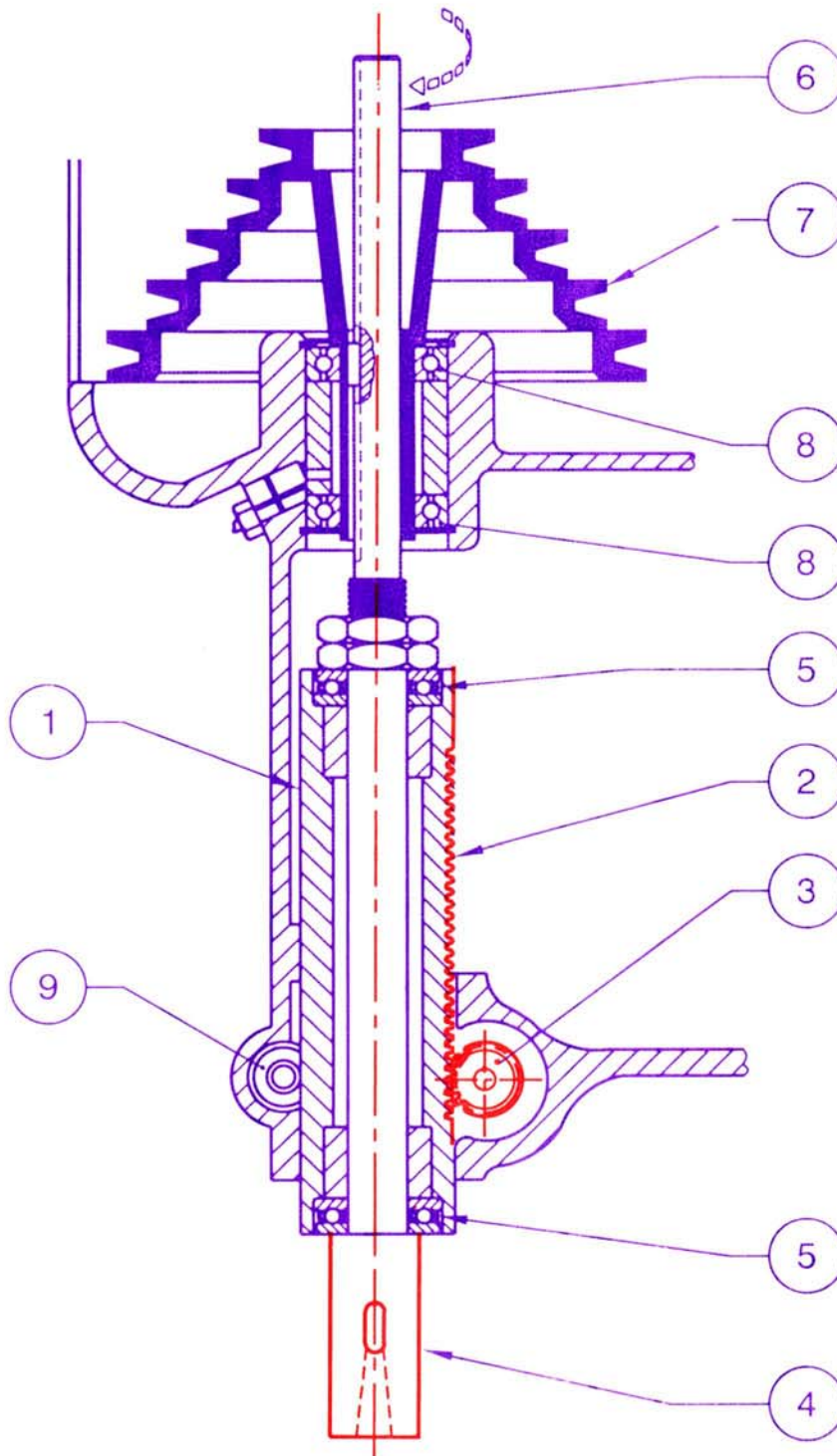


GATE VALVE - PARTS AND FUNCTION



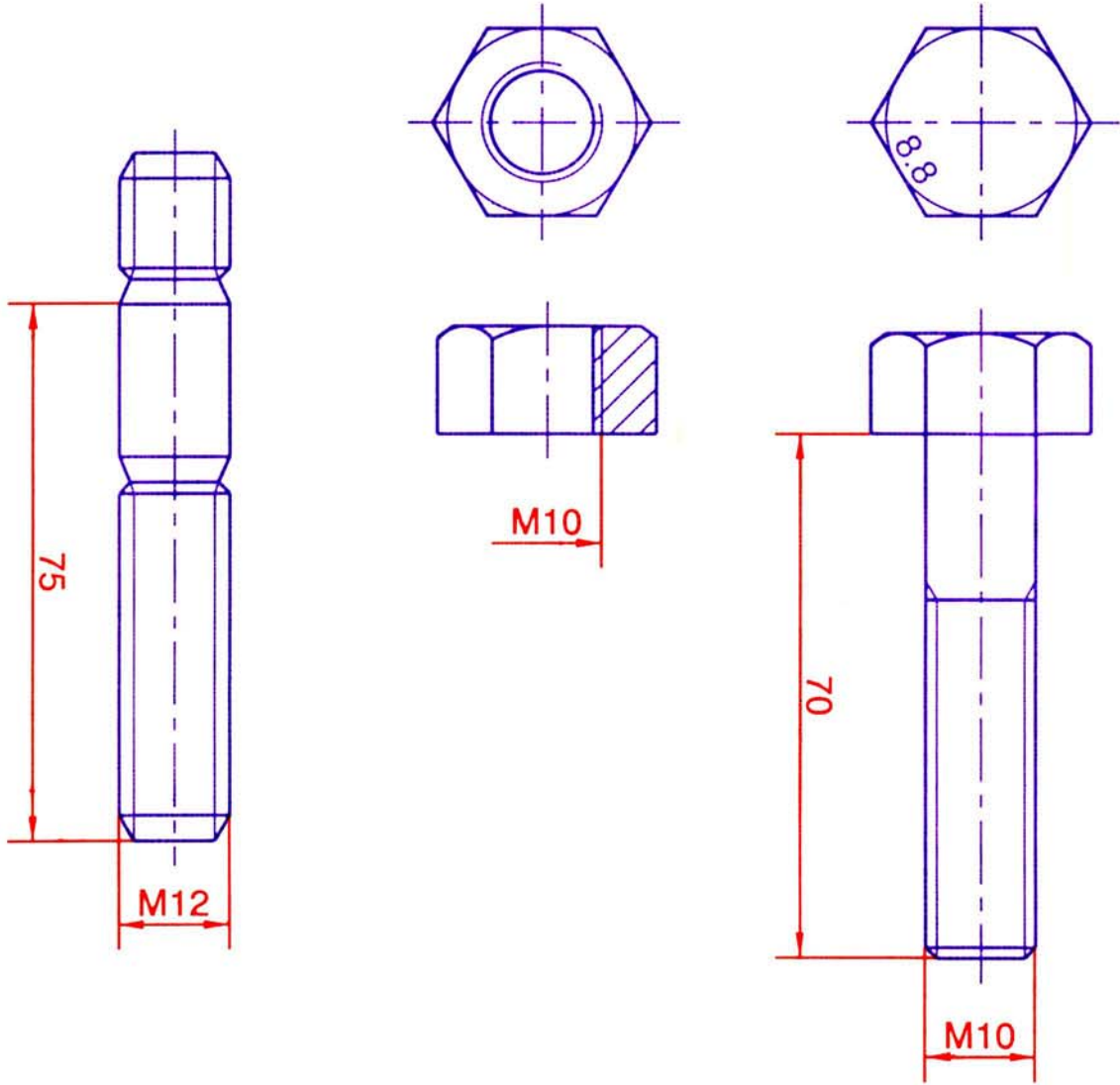


DRILLING MACHINE SPINDLE ASSEMBLY





SPECIFICATION OF MACHINE SCREW - NUT AND STUD



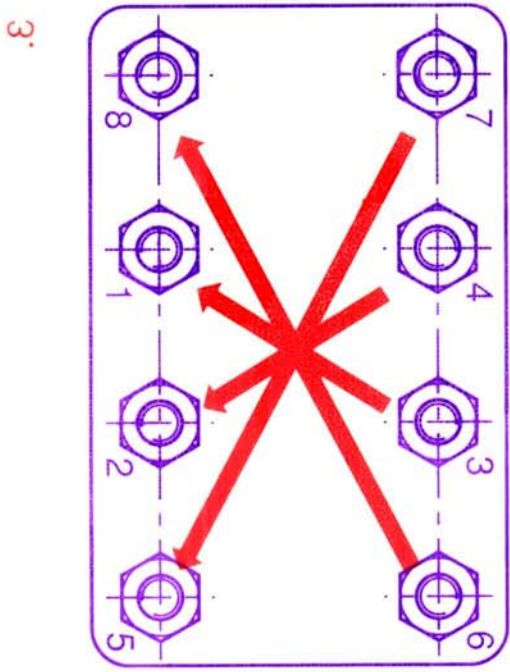
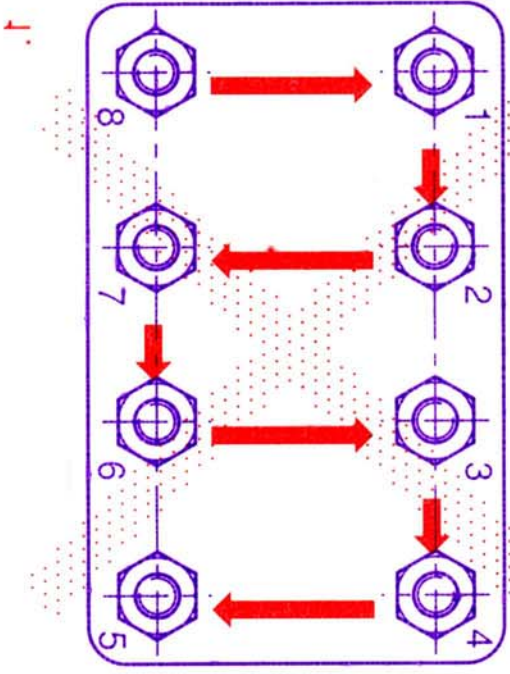
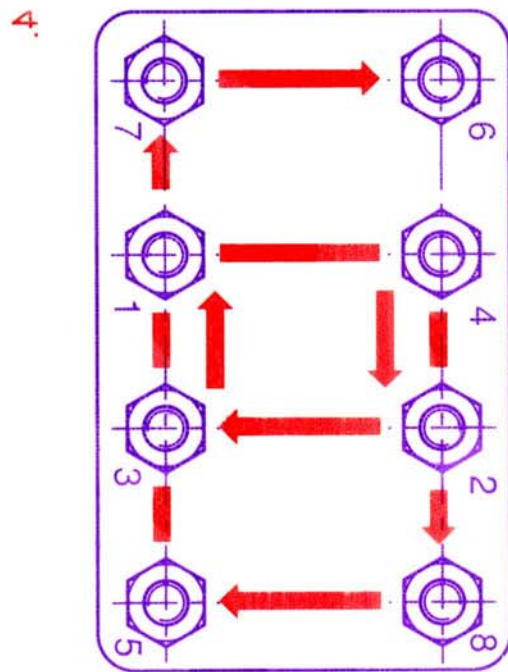
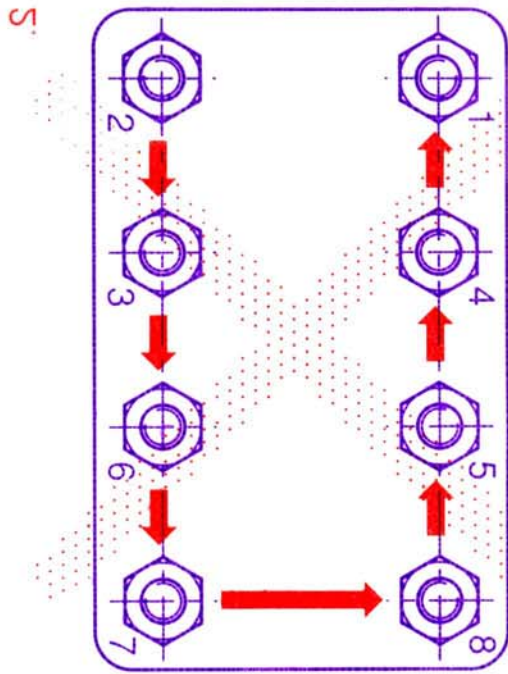
M 12 x 75

M 10

8.8

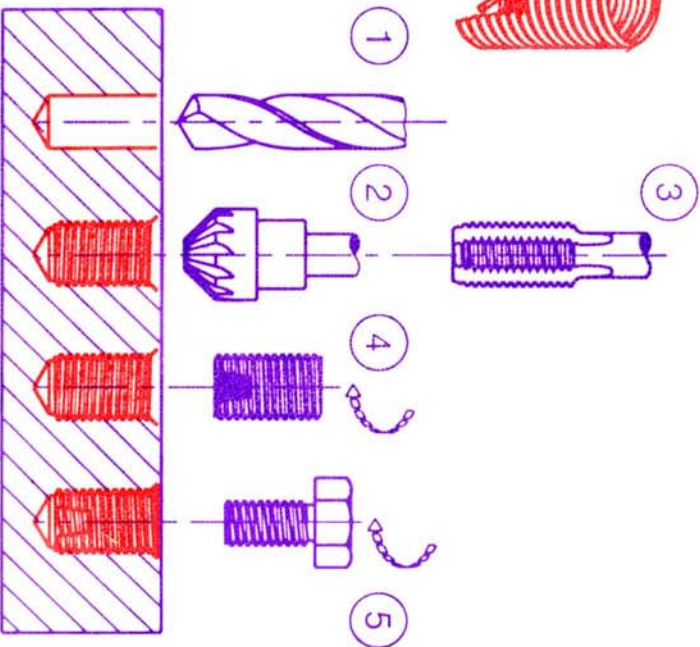
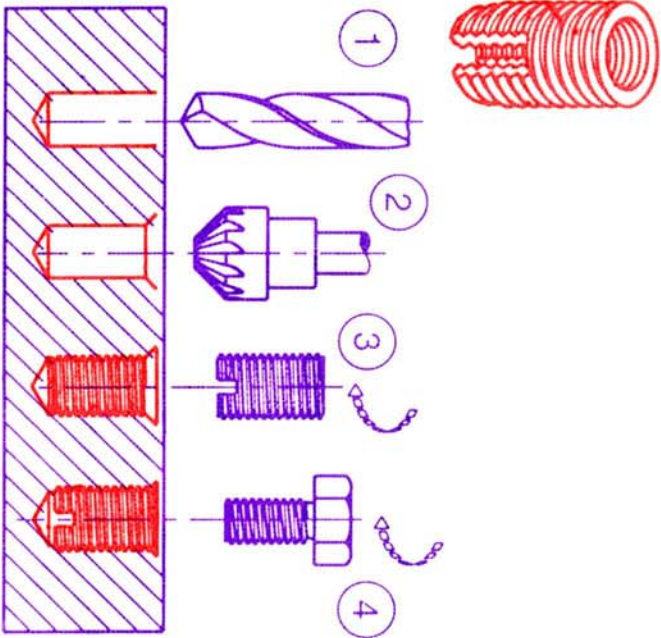
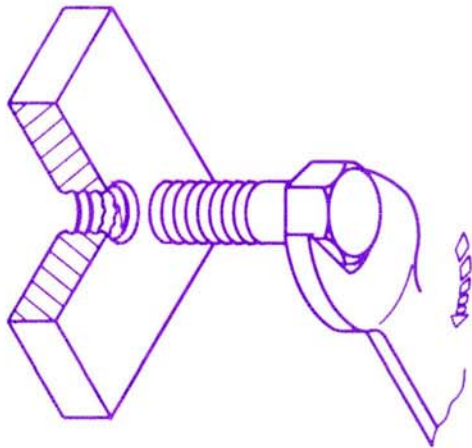
M 10 x 70

SEQUENCE FOR TIGHTENING NUTS IN ASSEMBLIES

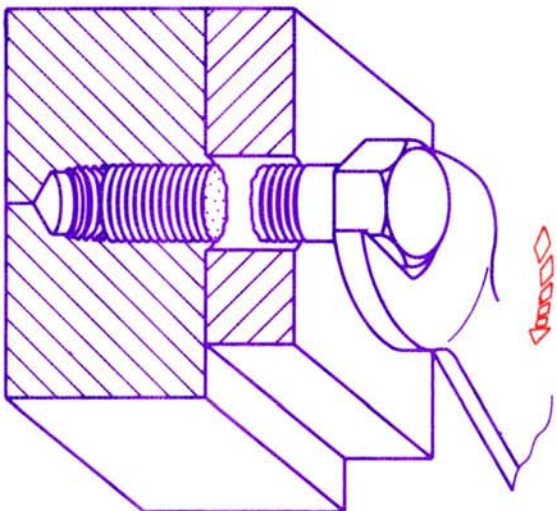




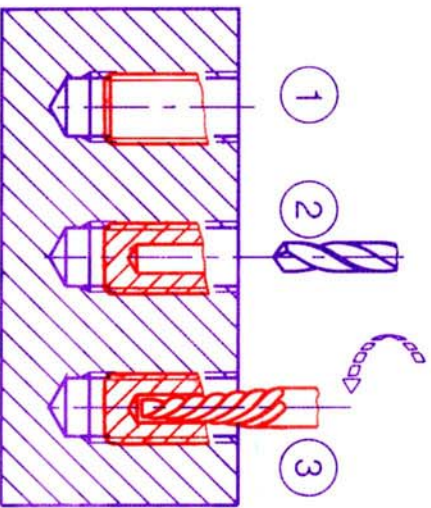
REPAIRING DAMAGED INTERNAL THREADS



EXTRACTING BROKEN BOLTS FROM HOLES



A. EXTRACTOR



B. SLOTTING

