

Beekeeping in Central Africa - A Practical Guide to ... ▾



Beekeeping in Central Africa - A Practical Guide to Producing Honey and Wax

Author(s): ***Paul Latham***

Publication date: ***2004***




Number of pages: ***52***

Publisher: ***The Salvation Army***

ISBN: ***09546698 2 7***

Copyright holder: ***Paul Latham***

Contents:

-  [**Acknowledgements**](#)
-  [**Beekeeping in Central Africa - A Practical Guide to Producing Honey and Wax**](#)
-  [**Back Cover**](#)

Acknowledgements

 [Top](#)

This booklet was produced by the Integrated Development Project (PDI), of the Salvation Army, Congo and Angola.

Design and text:

Lemba Mayasi, Augustin, beekeeping instructor (PDI/Salvation Army)

Ntangu Targou, artist/designer (BUPROMAD)
Jacques Miaglia (Christian Aid)
Yvette Mandila, beekeeper
Ndona Pauline, beekeeper

Artwork:

Ntangu Targou (BUPROMAD)
Ndona Pauline (BUPROMAD)
Ntangu Mampuya (BUPROMAD)
Ntangu Alaire Siku (BUPROMAD)

Translation:

Captain Heather Poxon

Technical advice:

Luvuma Thérèse, coordinator (PDI)

Major Kabweni, Kavwaya
Nsimba Mbala Félicien (PDI)
Mavitu Pauline, head of womens' programme
Mr. Ndombe,
Mr. Jacques Miaglia
Major Paul Latham
Mr. Keith Moscrop



**Beekeeping in Central Africa - A
Practical Guide to Producing Honey
and Wax**

Author(s): ***Paul Latham***




Publication
date: ***2004***

Number of



pages: **52**
Publisher: **The Salvation Army**
ISBN: **09546698 2 7**
Copyright holder: **Paul Latham**

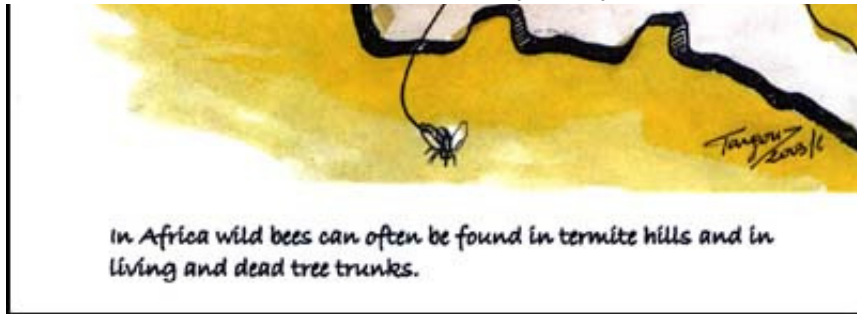
[Contents:](#)

-  [Acknowledgements](#)
-  [Beekeeping in Central Africa - A Practical Guide to Producing Honey and Wax](#)
-  [Back Cover](#)

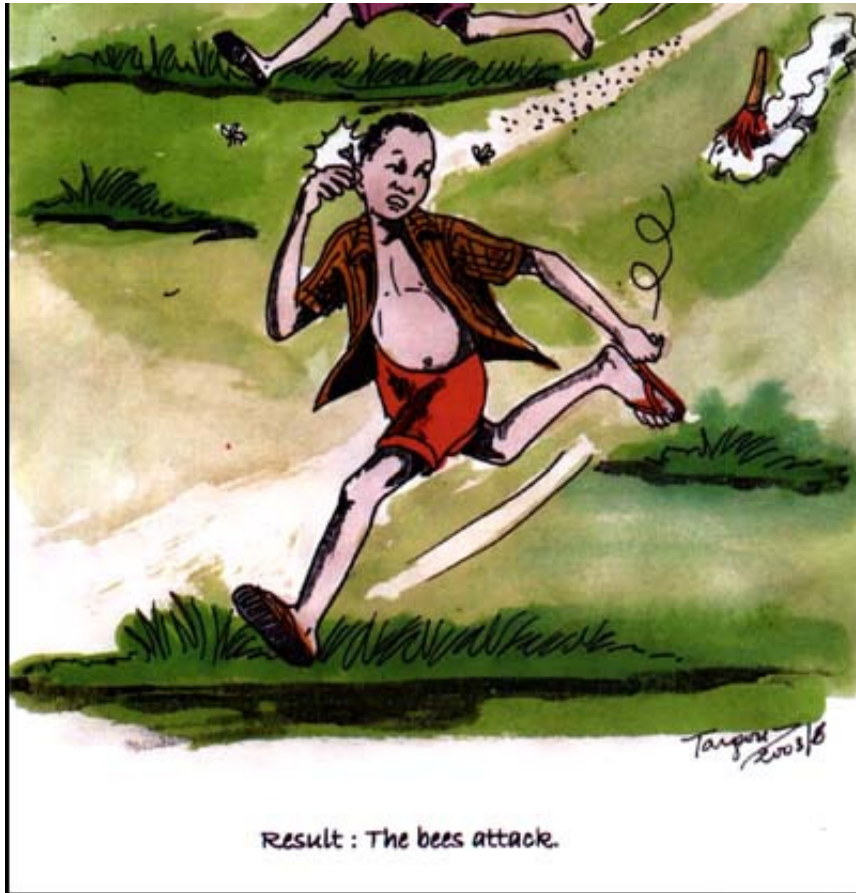
Beekeeping in Central Africa - A Practical Guide to Producing Honey and Wax

 [Top](#)



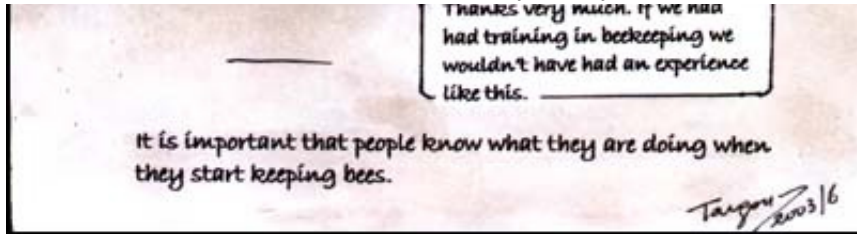




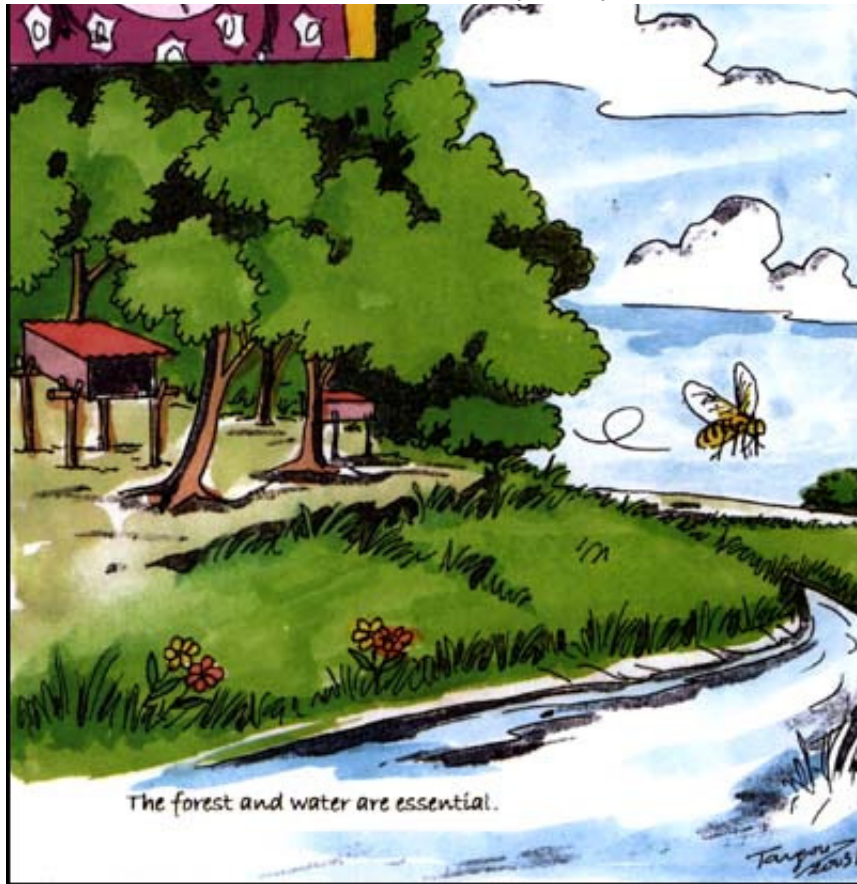


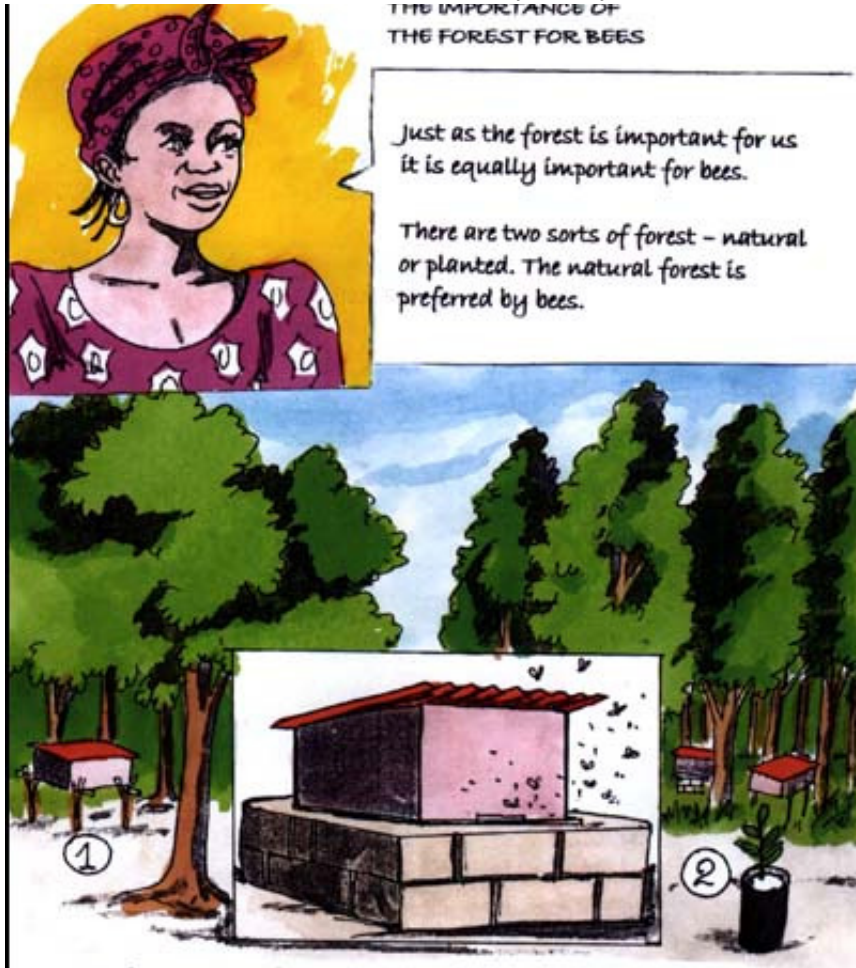
if you had read this book it was...







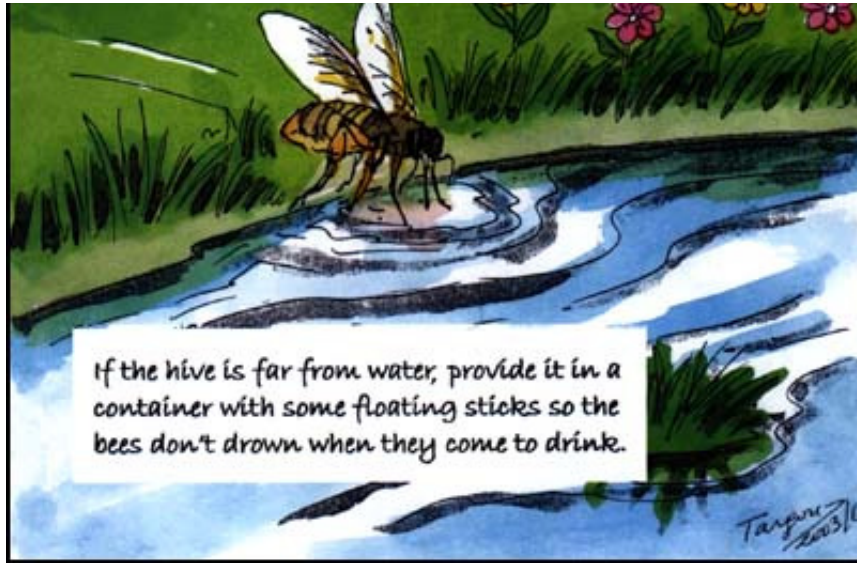




- The forest produces flowers providing the bees with nectar and pollen.
- It provides a quiet place for the hives, away from human activity, which may cause the bees to be aggressive.
- Children and livestock are less likely to be stung.
- The beekeeper can move away from the hive without being followed by bees.
- It reduces the effect of wind.

Targou
2003/6

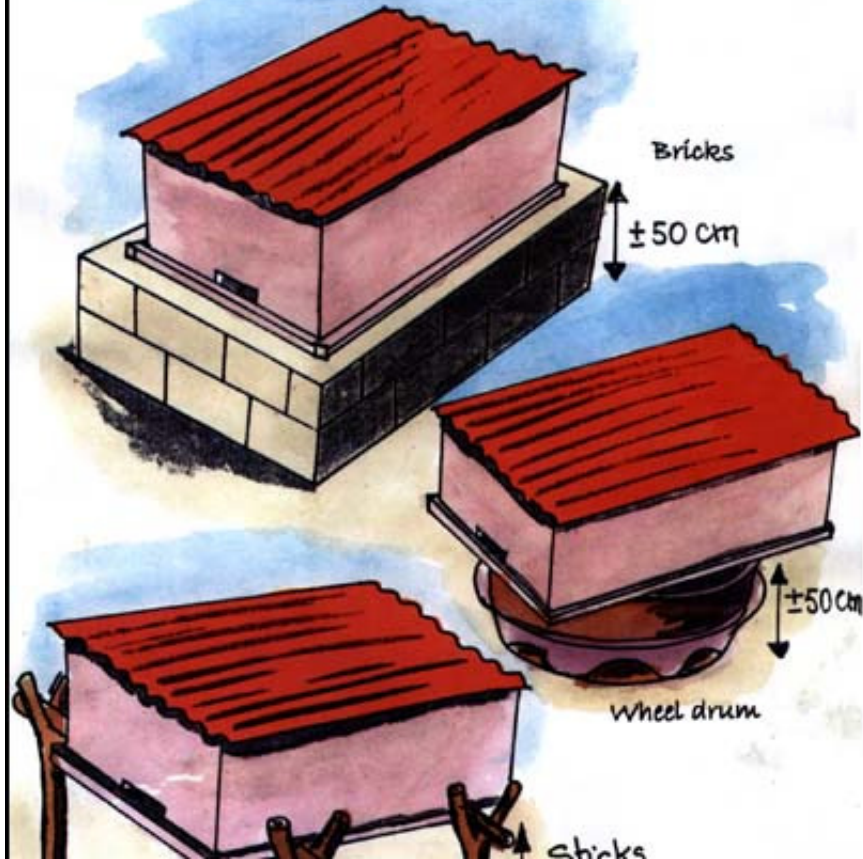


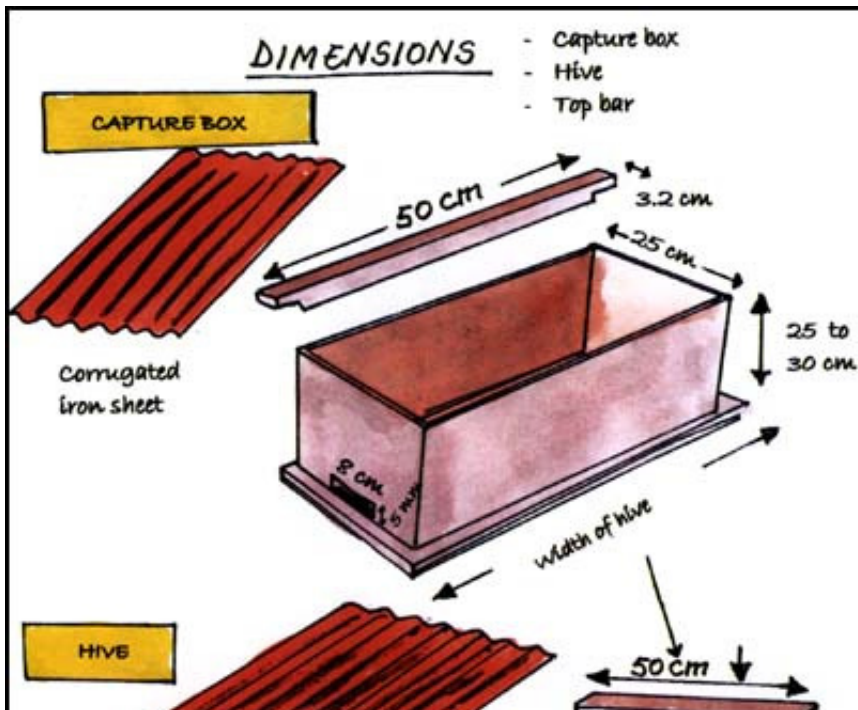


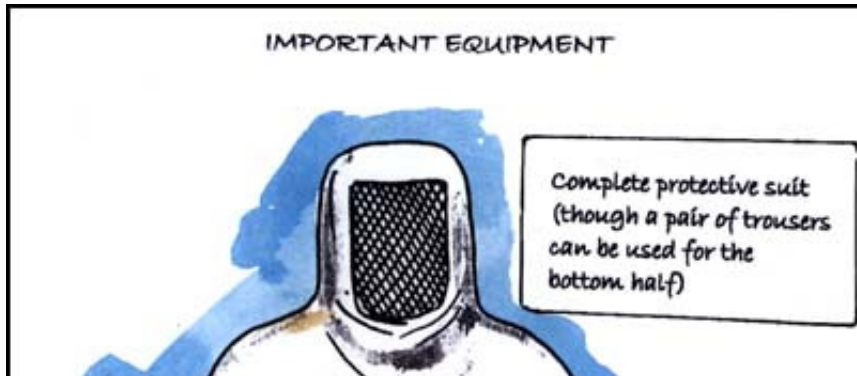
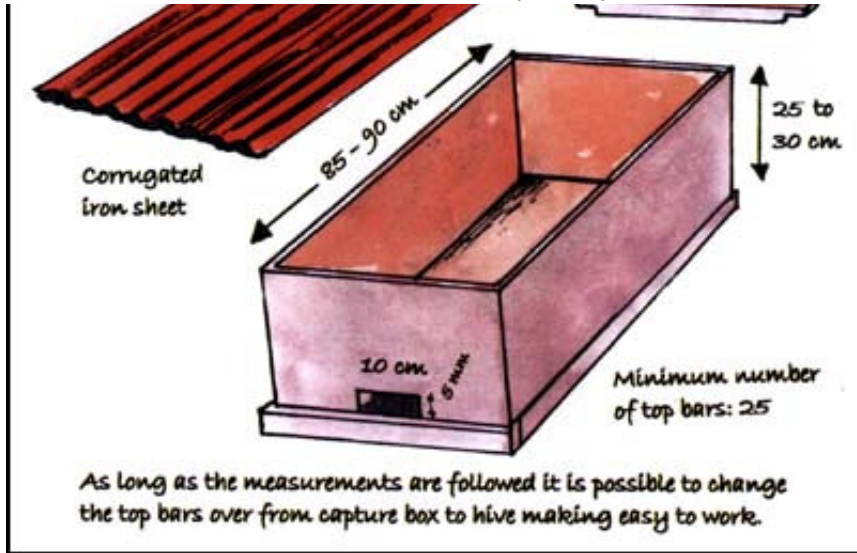


SUPPORTS

Supports for the hive are needed to protect the bees from water and ants. They can be made from bricks, wheel drums or metal items. These last much longer than those made from sticks.





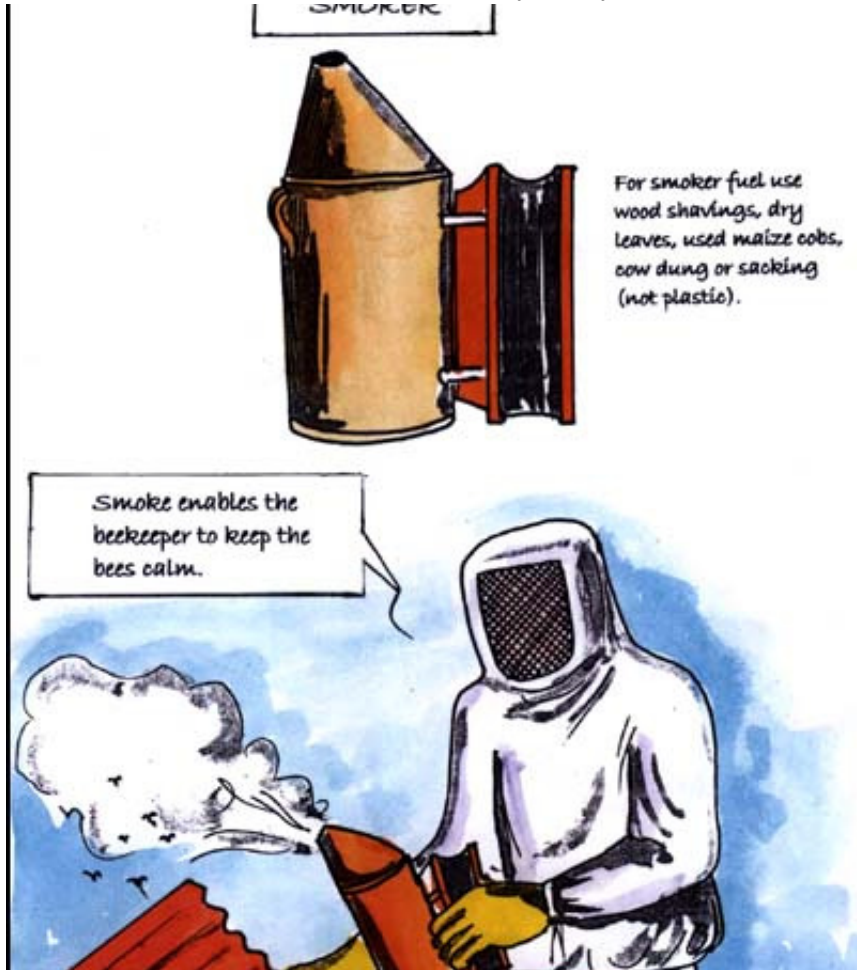


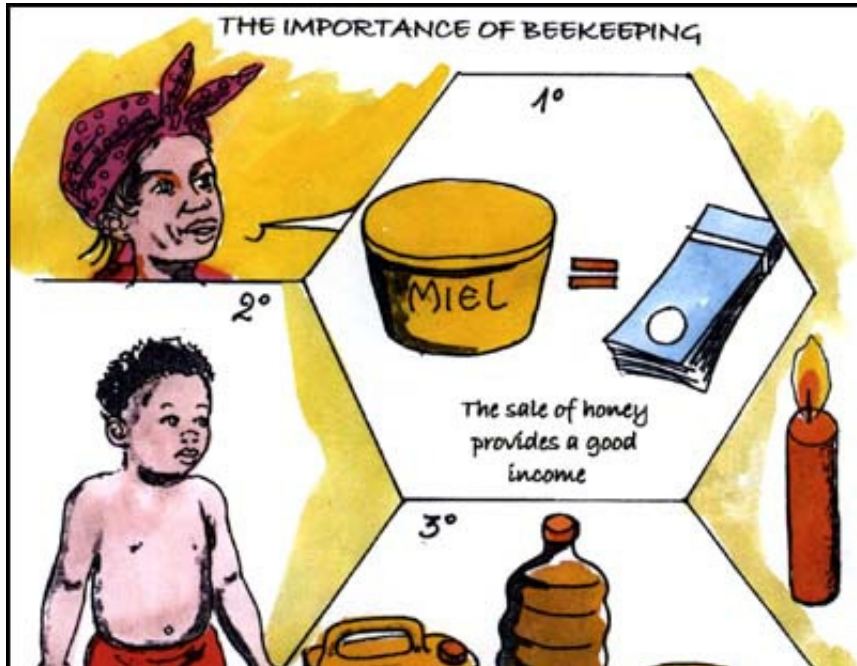


The suit enables the
beekeeper to protect him-
or herself from
dangerous stings and
work with the bees
calmly and safely.

Targom
2003/6

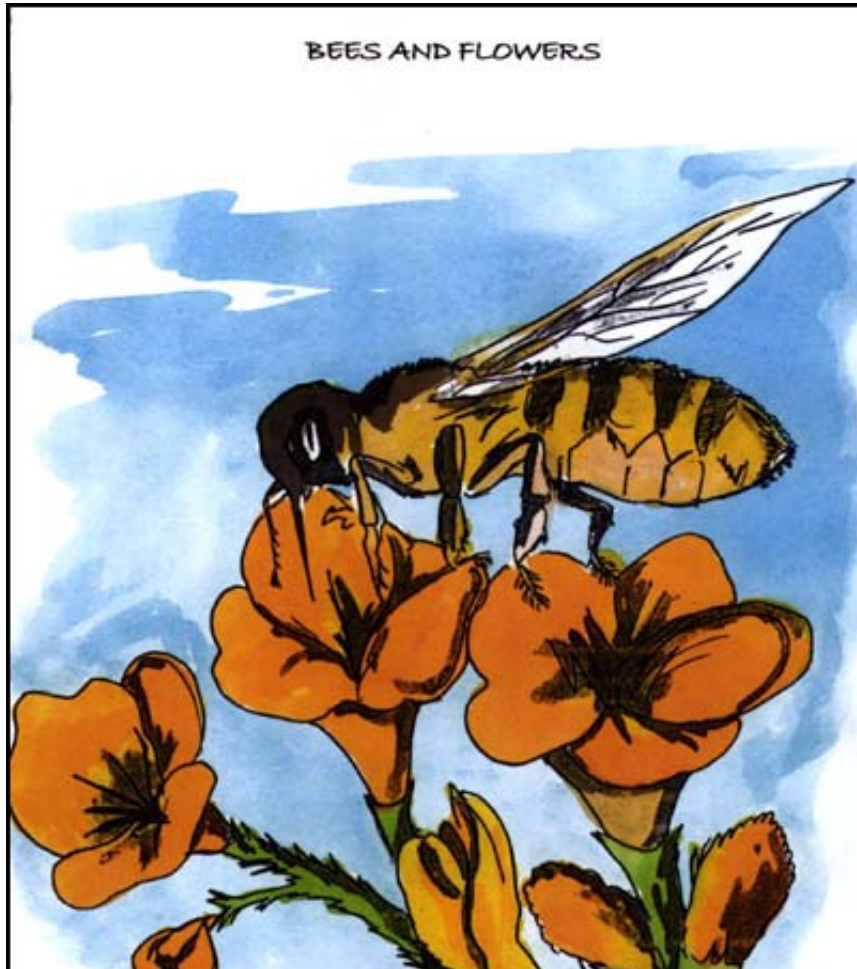
SMOKER









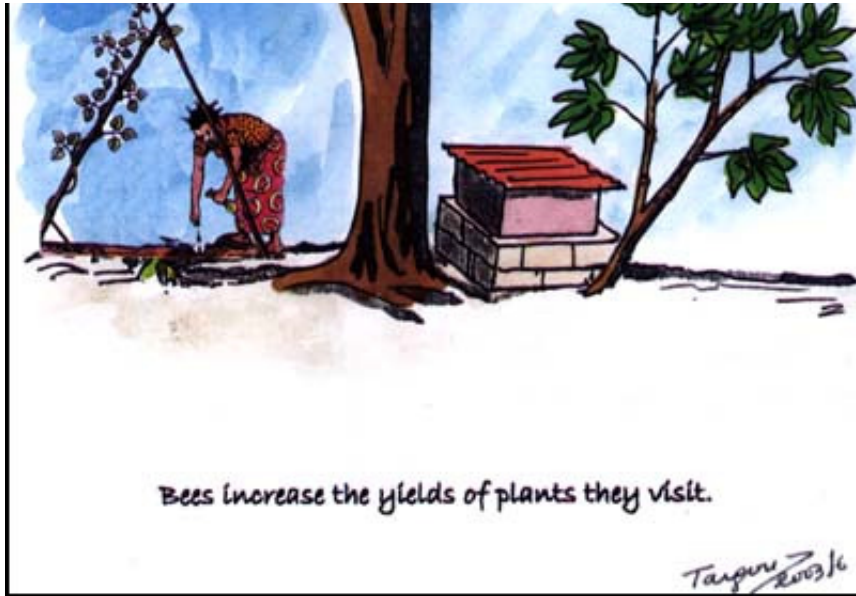


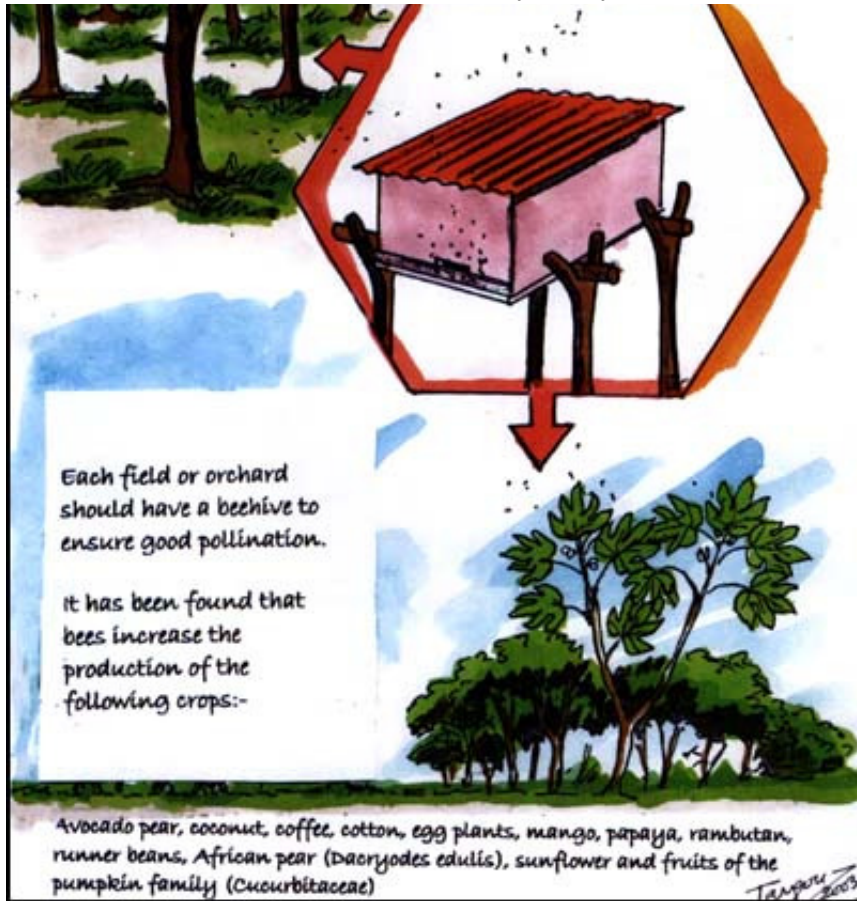


Bees are important both for producing honey
and especially for pollinating plants.

Tayson
2003/6









The bee colony is composed of three sorts of bees.

Targem
2003/16



THE QUEEN

The queen is the only female able to lay eggs. She keeps the colony going. She is the largest bee. Her abdomen is 18 to 20 mm long and brown or yellow in colour.



THE WORKERS

These are females which are unable to lay eggs. They are very active and perform the following tasks:- guarding the hive,



cleaning, making wax, ventilating the hive, feeding the young and collecting nectar and pollen.



THE DRONES

These are the male bees and are larger than the workers. Their only role is to fertilize the queens of other colonies. If the drones become numerous it is a sign that the colony is old.

Taylor
2003/6

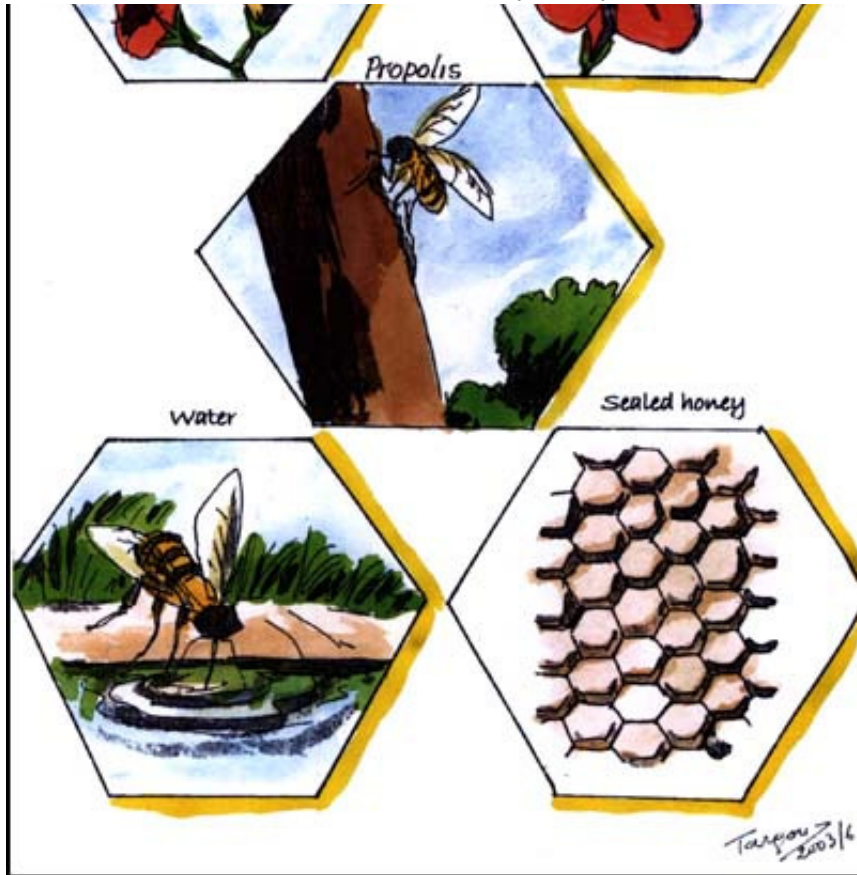
THE REQUIREMENTS OF A HIVE

Nectar

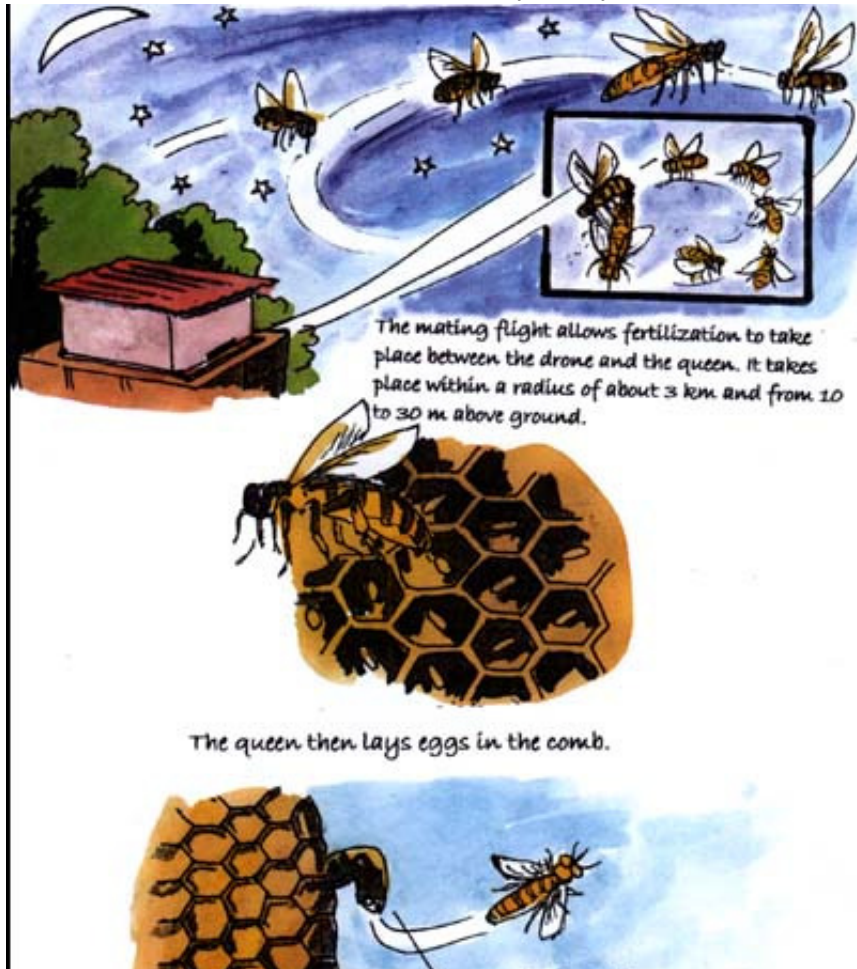


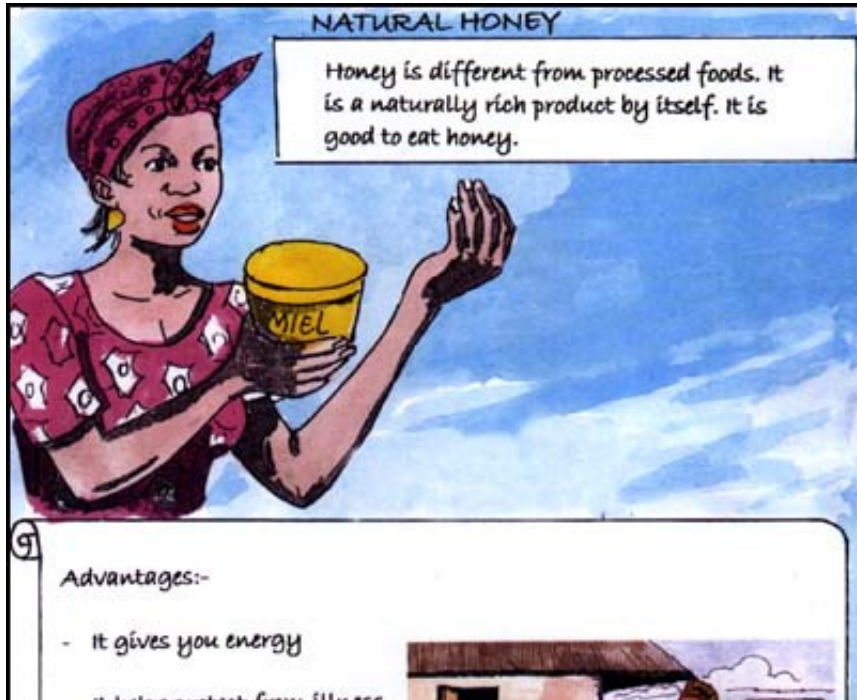
Pollen





REPRODUCTION





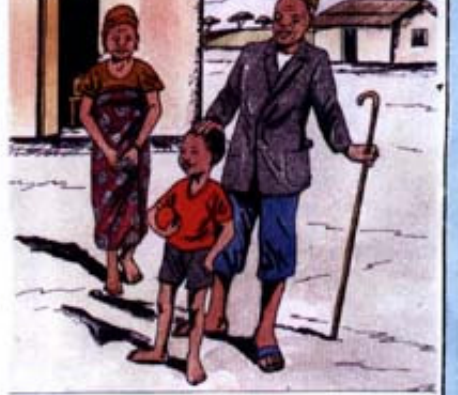
- It helps protect from illness

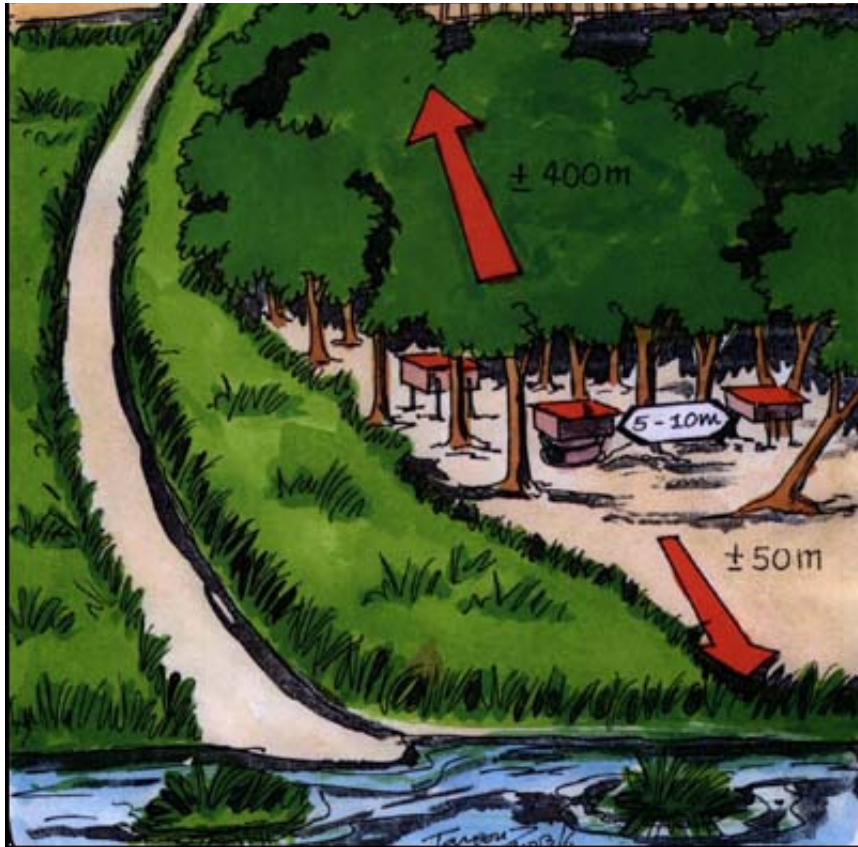
- It helps digestion

- It is a good medicine for
sore throats

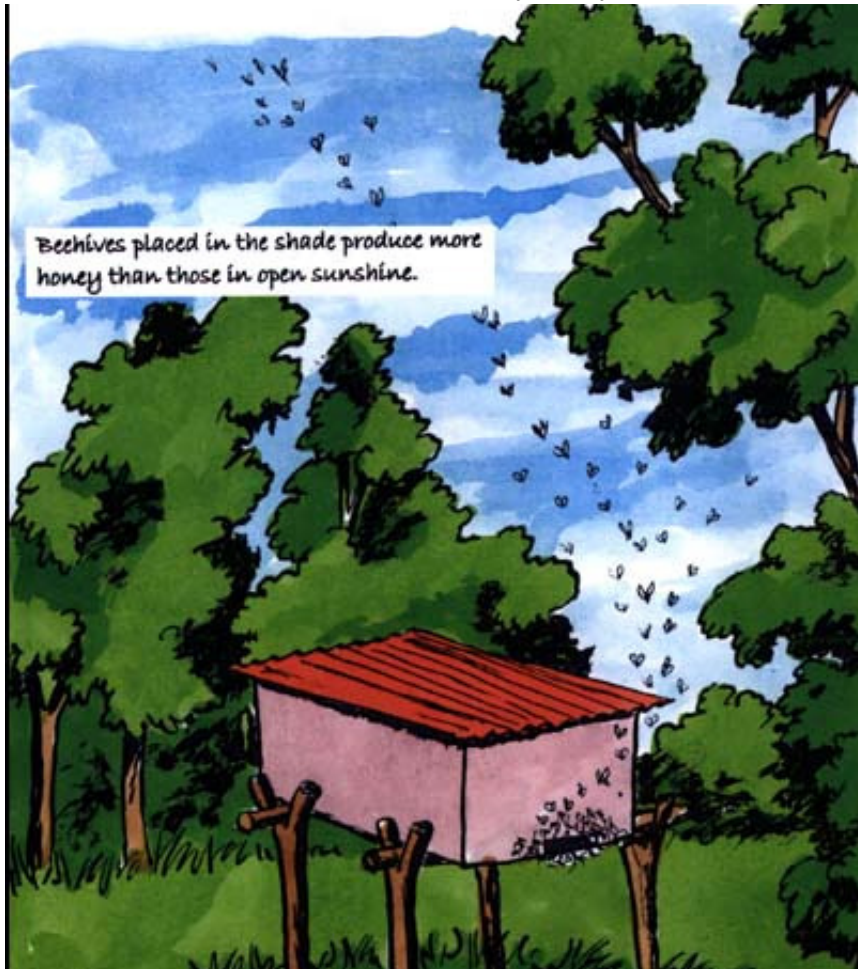
- It lessens constipation

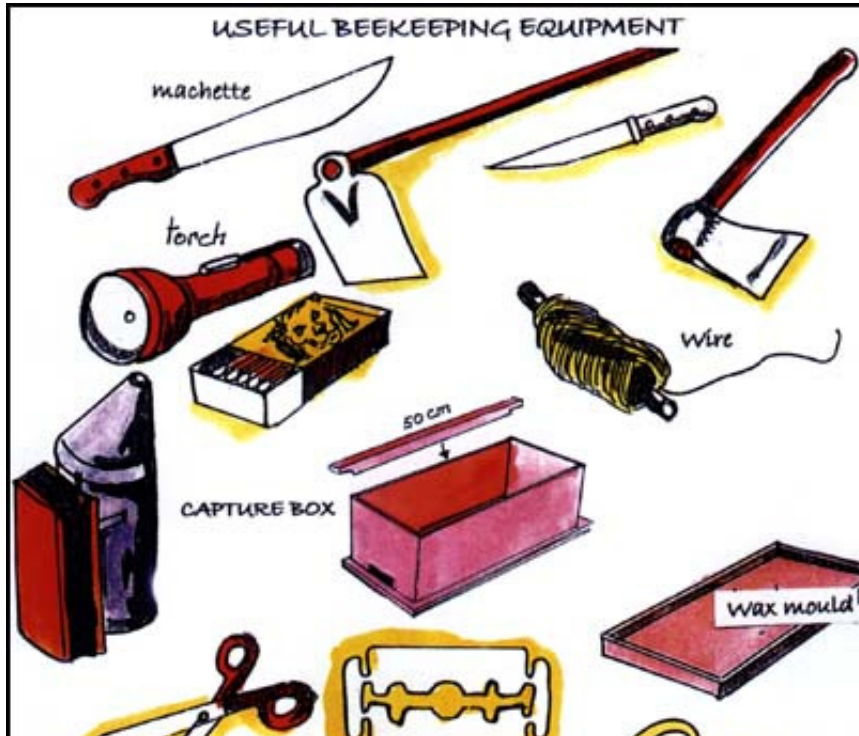
But do not give honey to
babies under one year old.

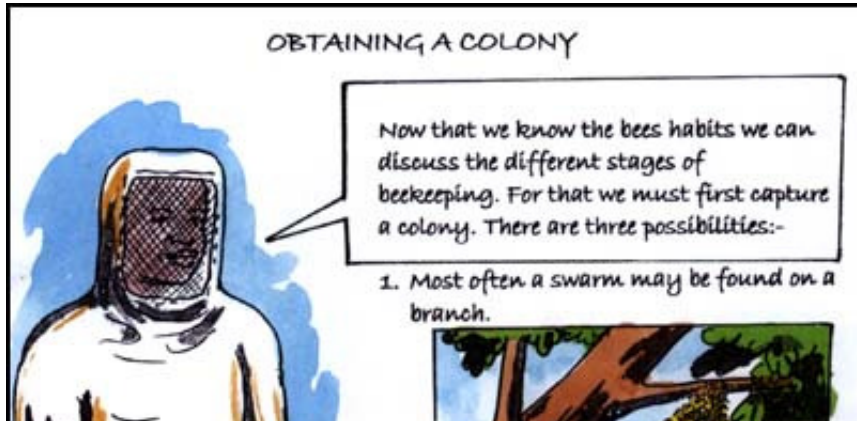


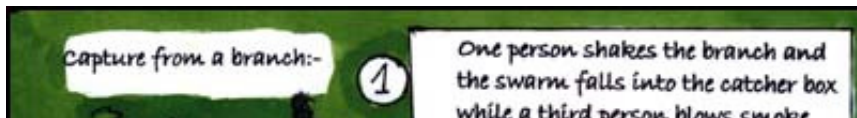
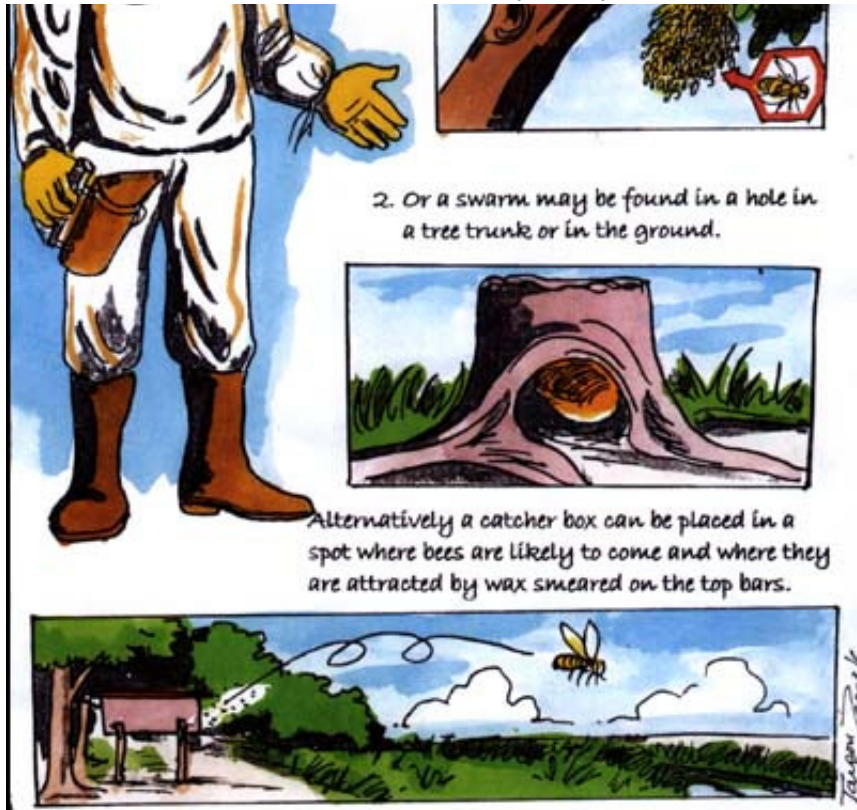


A GOOD SITE FOR A HIVE













From a tree trunk or hole in the ground.

Step 1. Getting the colony out.

The task is delicate and the queen should be marked and put in the capture box to make sure the colony is properly installed.

An illustration showing two beekeepers in white protective suits and mesh face masks. They are using long-handled tools to extract a colony from a hole in a tree trunk. The scene is set against a blue sky with a large, brown, conical structure in the background.

Step 2. Fasten some wild combs to the top bars.

Step 3. Place these in the catcher box

An illustration showing a close-up of a wild comb being fastened to a top bar.An illustration showing a catcher box.



IN A CATCHER BOX

Find out when swarms are most likely to be flying and bait the hive or catcher box to attract the bees by rubbing wax on the inside and around the entrance.

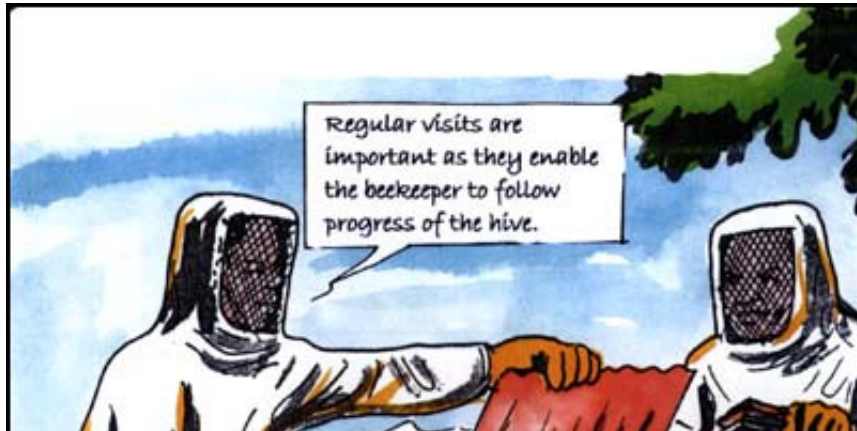


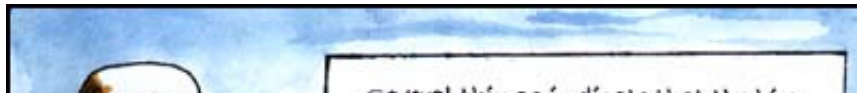
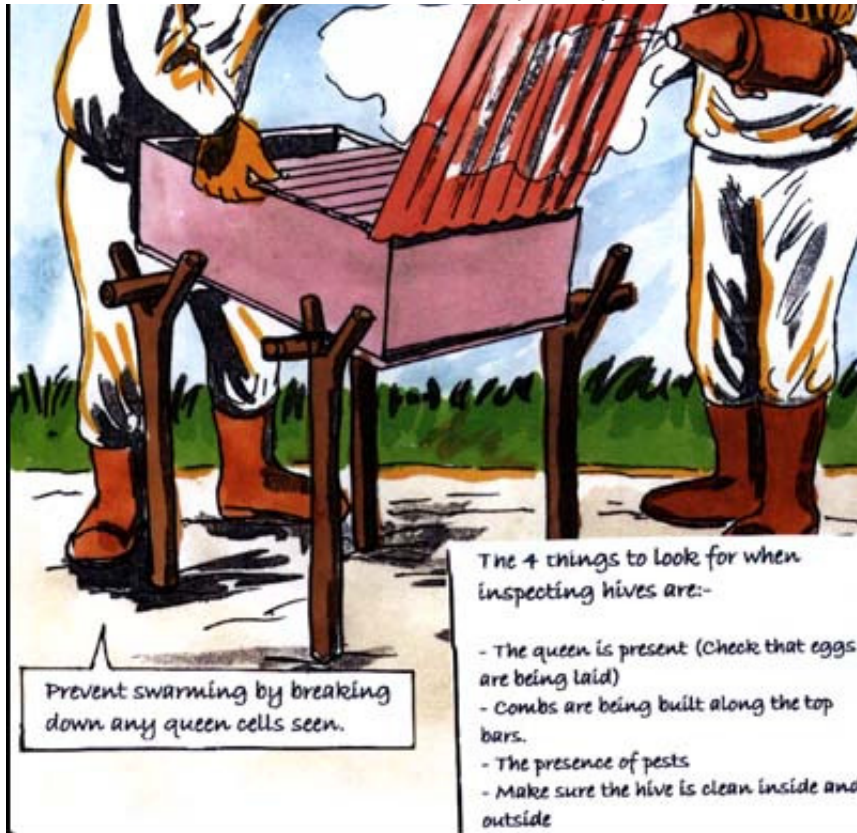
TRANSFER FROM A CATCHER BOX TO THE HIVE

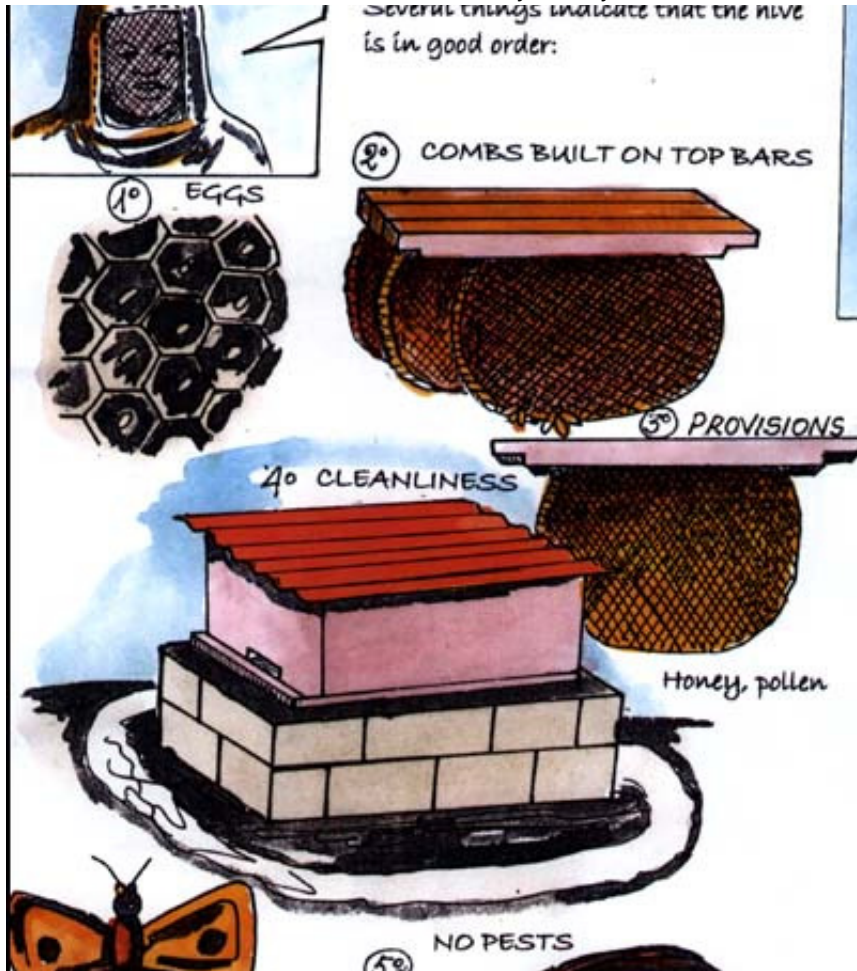
Once the colony in the catcher box is well established and 4 top bars have comb built on them, it is time to transfer the colony to a hive. The catcher box has 6 - 8 top bars, each with a little wax to help the bees start building their comb. The transferred bars should be placed next to the hive entrance.



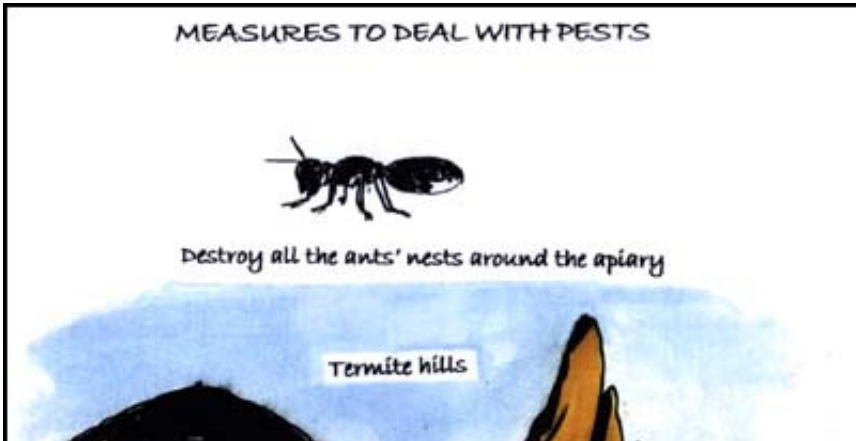


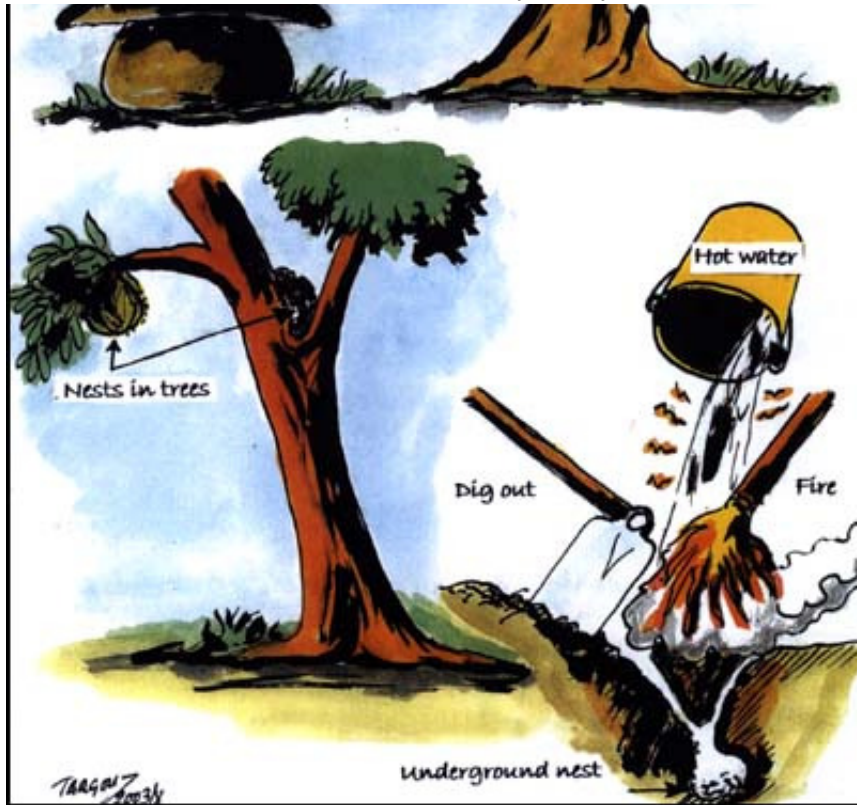










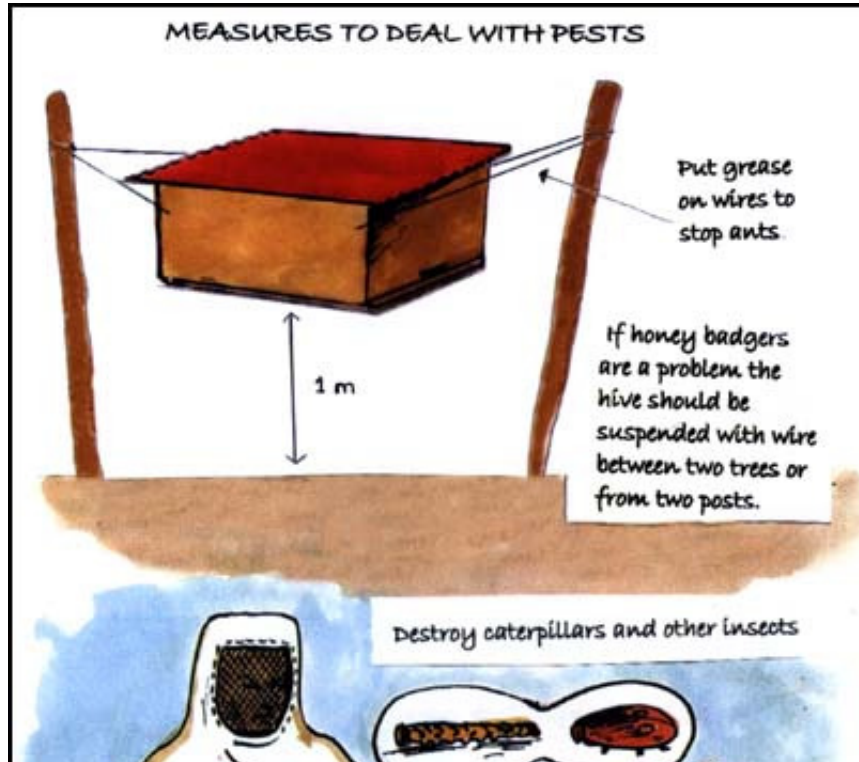


MEASURES TO DEAL WITH ANTS



Remove branches which touch the hive

Sprinkle chaffe or wood-ash 1 meter around the hive



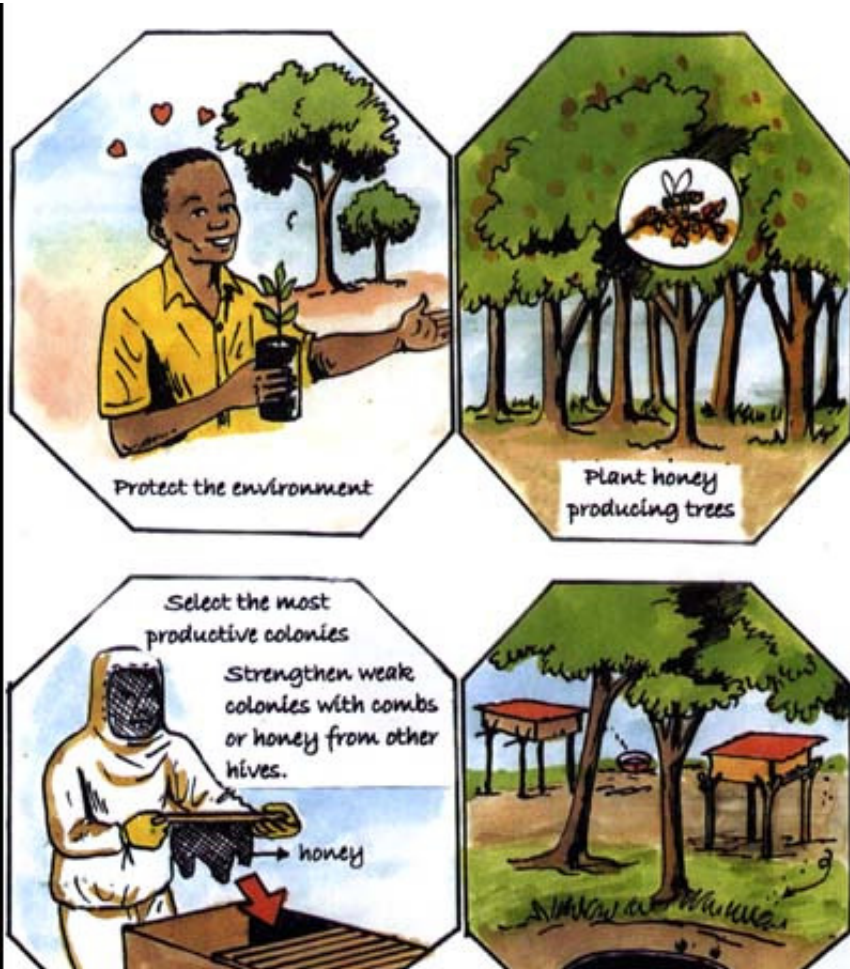


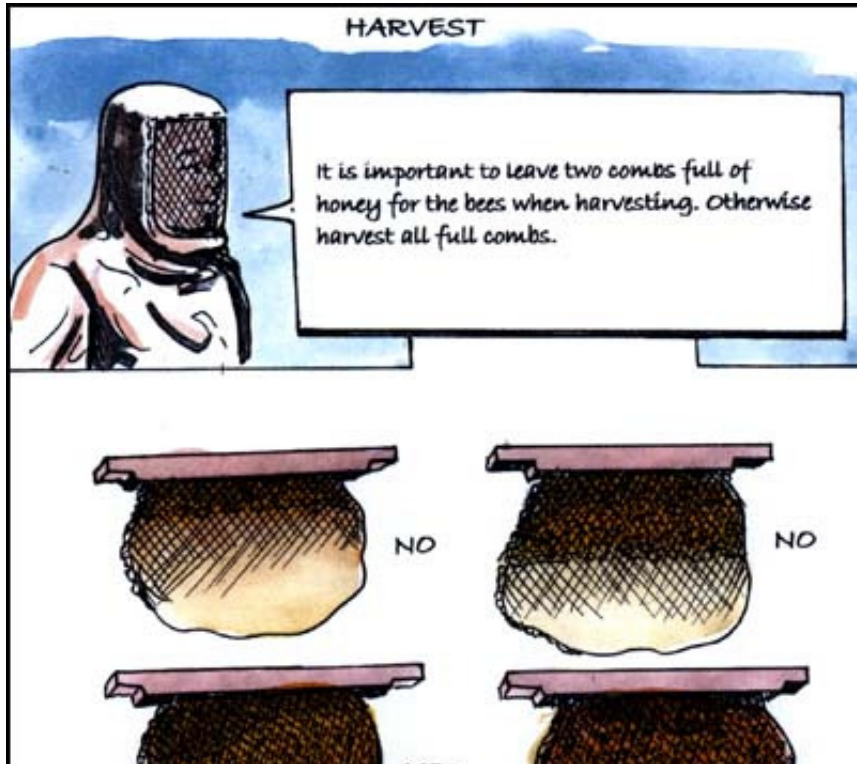
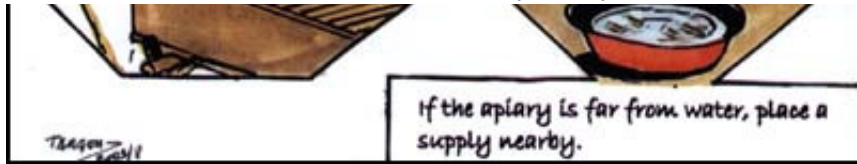
WHAT TO DO WHEN A HIVE IS NOT WORKING WELL

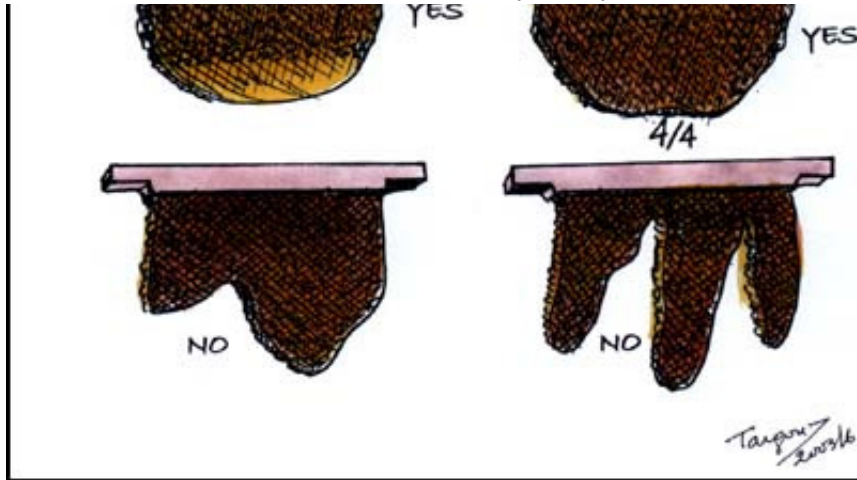
WEAK COLONY	OLD QUEEN
<ul style="list-style-type: none">- Kill the queen- After one week, destroy all the queen cells- Introduce a comb from a good colony with eggs less than 3 days old	<ul style="list-style-type: none">- Check that there are eggs less than 3 days old- Kill the queen- After one week check that



HOW TO INCREASE PRODUCTION









HONEY EXTRACTION

Honey is separated from the comb by filtering it through plastic or cloth

mosquito netting (don't use wire netting), as soon as possible after harvesting. A second filtering should then be carried out using a finer mesh cloth. Filtering should be done at night when there are no bees flying around. Honey should not be heated when extracting.





HYGIENE

It is important to follow three basic rules of hygiene to prevent dirt and germs contaminating the honey:-

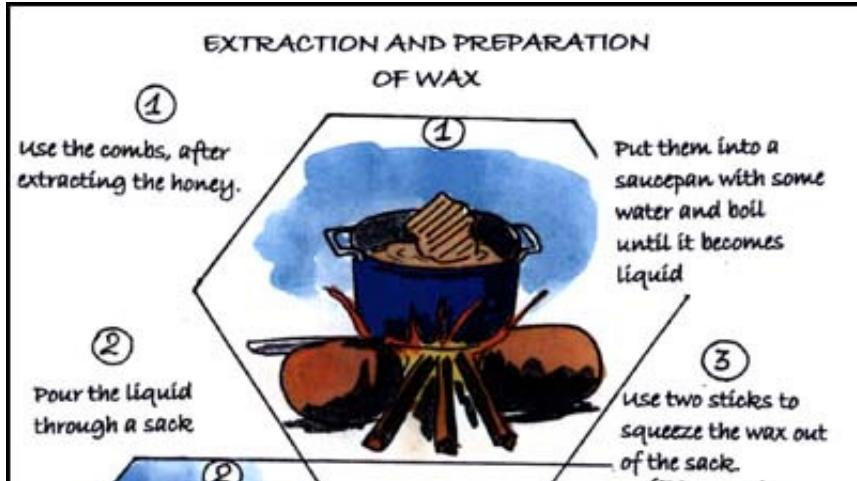


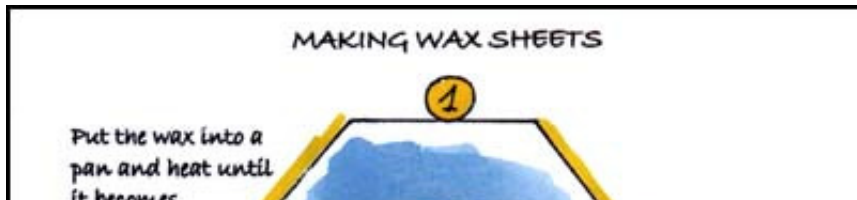
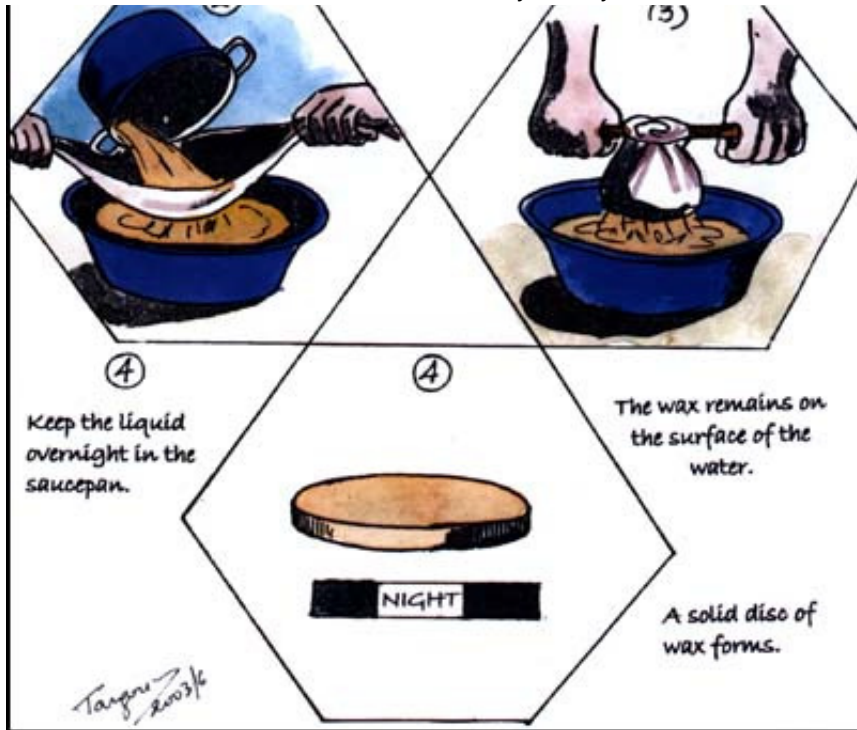
1

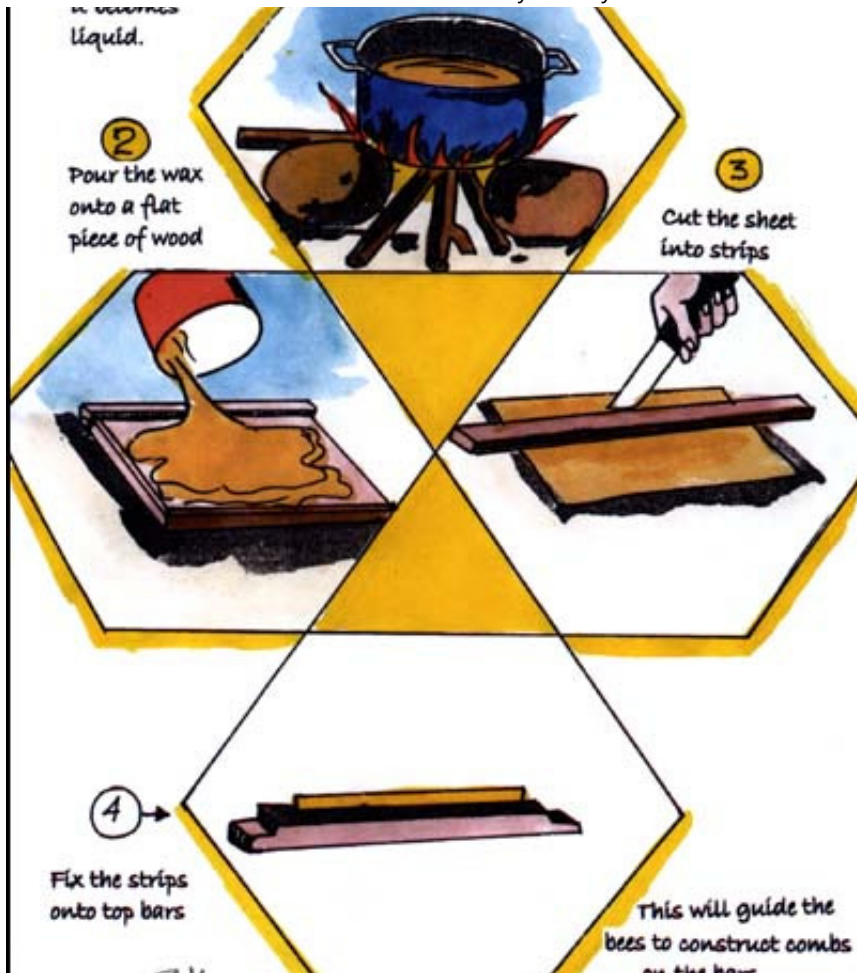
Wash your hands and dry them.

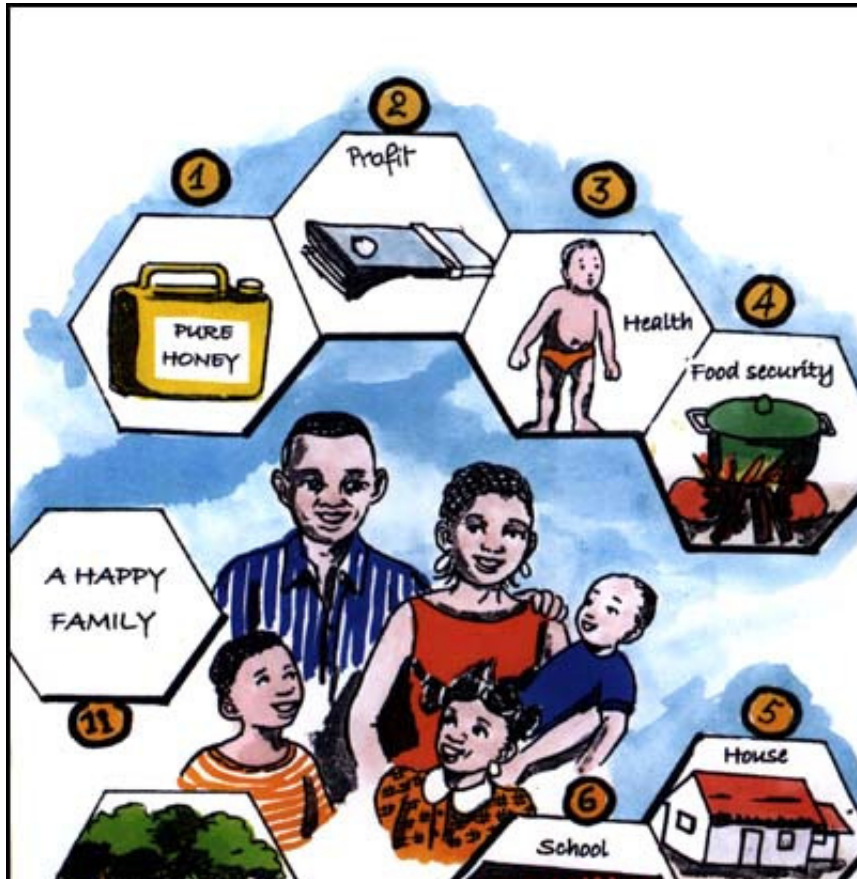


Don't lick your fingers while working with











Please send comments or suggestions on this book to:-

**Paul Latham, Croft Cottage, Forneth, Blairgowrie, PH10
6SW,
United Kingdom**

E mail address: paul@latham9.fsnet.co.uk

**For contacts on beekeeping within Africa write to:-
Bees for Development, Troy, Monmouth, NP25 4AB,
United Kingdom**

E mail: info@beesfordevelopment.org

Copies of this booklet can be obtained from:

**Loch Fyne Services, Bay Villa, Strachur, Argyll PA27
8DE,
United Kingdom
E mail: strachur@aol.com**



Beekeeping in Central Africa - A Practical Guide to Producing Honey and Wax

***Author(s):* Paul Latham**




***Publication
date:* 2004**

***Number of
pages:* 52**



Publisher: ***The Salvation Army***
ISBN: ***09546698 2 7***
Copyright holder: ***Paul Latham***

Contents:

-  [Acknowledgements](#)
-  [Beekeeping in Central Africa - A Practical Guide to Producing Honey and Wax](#)
-  [Back Cover](#)

Back Cover

 [Top](#)

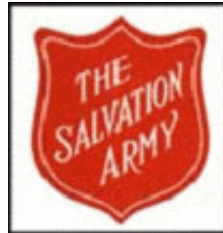
Other booklets being produced in this series:-

Edible mushrooms of Bas-Congo

Edible caterpillars of Bas-Congo

Local vegetables of Bas-Congo

Tree planting in Bas-Congo



***Integrated Development Project of the Salvation Army,
Democratic Republic of Congo
Post Box 8636, Kinshasa 1 D.R.C.***







Beekeeping in Central Africa - A Practical Guide to Producing Honey and Wax

<i>Author(s):</i>	<i>Paul Latham</i>
<i>Publication date:</i>	<i>2004</i>
<i>Number of pages:</i>	<i>52</i>
<i>Publisher:</i>	<i>The Salvation Army</i>
<i>ISBN:</i>	<i>09546698 2 7</i>
<i>Copyright holder:</i>	<i>Paul Latham</i>

[Contents:](#)



-  [Acknowledgements](#)
[Beekeeping in Central Africa - A Practical Guide to Producing Honey and Wax](#)
-  [Back Cover](#)

Beekeeping in Central Africa - A Practical Guide to Producing Honey and Wax

[▲ Top](#)

Printed by:

**Streets Printers,
Royston Rd., Baldock,
Hertfordshire SG7 6NW,
United Kingdom**



Title: Beekeeping in Central Africa

This booklet is the English version, with some adaptation, of one produced in French by the Integrated Development Project of the Salvation Army, Democratic Republic of Congo for use in the Bas-Congo province.

Copyright: © Paul Latham

ISBN number: 09546698 2 7

First English edition, 2004



**Lemba Mayasi, Augustin, beekeeping instructor
(PDI/Salvation Army, Bas-Congo)
with Ntangu Targou, artist-designer (BUPROMAD, Bas-
Congo).**

