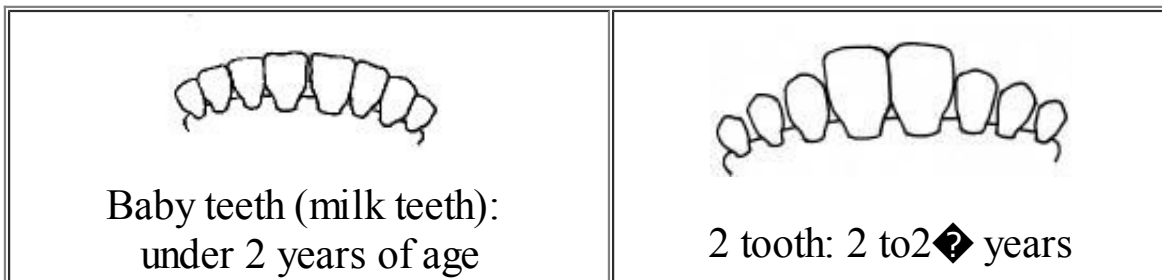
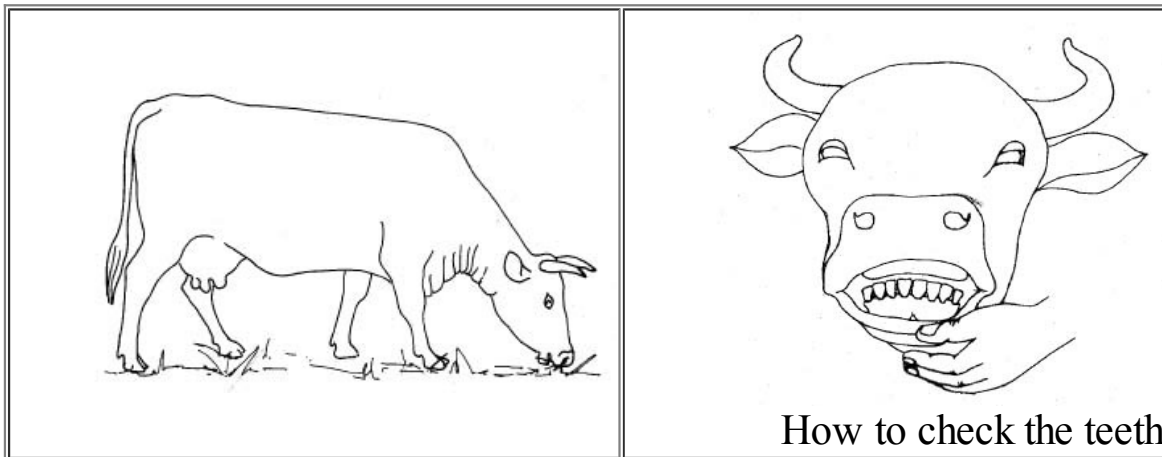
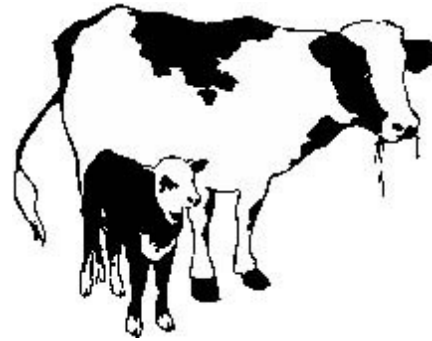



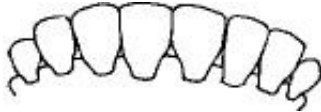




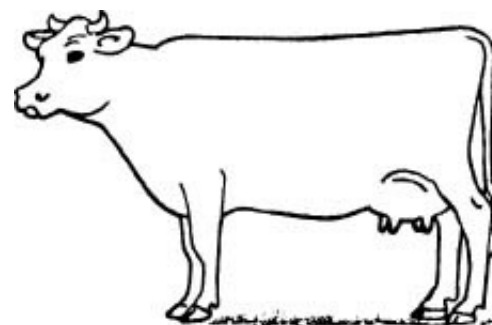
How to estimate the age of cattle

You can estimate the age of cattle by looking at the teeth. Old animals with worn teeth cannot eat well and will lose condition.





 <p>4 tooth: 2 \blacklozenge to 3 years</p>	 <p>6 tooth: 3_3 \blacklozenge years</p>
 <p>Full mouth: 4 years</p>	 <p>Worn: over 4 years</p>



For further information contact

**Animal Health for Developing Farmers Programme
Onderstepoort Veterinary Institute
Private Bag X05
ONDERSTEPOORT 0110**

Compiled by Jenny Turton

1999

Compiled by Directorate Communication, National
Department of Agriculture
in cooperation with
ARC-Onderstepoort Veterinary Institute

Printed and published by National Department of
Agriculture
and obtainable from
Resource Centre, Directorate Communication, Private Bag
X144, Pretoria 0001, South Africa

