

0%

 Search[Publications](#) [Publications TOC](#) [TOF](#)[Home](#) [Help](#) [Contact](#)You are here: [Home](#) > [Plant Health](#) > [Pests/ diseases/ weeds](#) > Banana weevil[← Back](#)[Print](#) Crops/ fruits/
vegetables[Pests/
diseases/
weeds](#)African
armywormAfrican
bollwormAfrican
cassava
mosaic virus
(ACMV)African
maize
stalkborer

Anthracnose

[more Images](#)**Banana weevil**Scientific name: *Cosmopolites sordidus*

Order/Family: Coleoptera: Curculionidae

Type: pest (insect/mite)

Common names: Banana weevil borer, banana root weevil, banana root borer, banana rhizome weevil, banana borer, plantain weevil, corm weevil, banana beetle

Host plants: Bananas Plantain and Ensete

[General Information on Pest and
Damage](#)[Biology and Ecology of the Banana
Weevil](#)[Pest and disease management
Cultural practices](#)[General Information on Pest and Damage](#)[Biological pest control](#)[Biopesticides and physical methods](#)[Information Source Links](#)

Aphids
Bacterial
wilt
Bagrada
bug

Banana
weevil

Black rot
Cabbage
looper
Cabbage
moth
Cabbage
webworm
Couch grass
Cowpea
seed beetle

Cutworms
Damping-off
diseases
Diamondback
moth (DBM)
Downy
mildew

Geographical distribution



The banana weevil (*C. sordidus*) is known from virtually all banana-growing countries of the world, including the New World, Afrotropics, Oriental and Australasian regions.

Geographical
Distribution of
Banana weevil in
Africa (red marked)

Damage

Grubs feed making irregular tunnels in the corm and rootstock. Tunnels are roughly circular and can reach up to about 8 mm in diameter. The corm can be

Early blight
Fruit flies
Fusarium wilt
Larger grain borer
Late blight
Leafmining flies (leafminers)
Mango seed weevil
Mealybugs
Powdery mildew
Purple witchweed
Root-knot nematodes
Snails (Giant East African Snail)
Spider mites

riddle with tunnels, which promotes fungal infection and decay reducing it to a black mass of rotten tissue. Injury to the corm can interfere with root initiation and sap flow in the plant, as a result the leaves turn yellow, wither and die prematurely. In particular young suckers show symptoms of wilting and die, but older plants are retarded in their growth. Heavily infested plants produce small bunches, and are easily blown over by the wind. Spent stems, cut or standing are attacked rapidly.

Damage is worst in neglected plants. In fertile soils and with good crop husbandry it is seldom serious. Banana weevil numbers are often low in newly planted fields. Population build-up is slow and weevil problems are most often encountered in ratoon crops. The banana weevil damage is more serious in low altitude areas than in highland areas as a result of the influence of temperature. Weevils are usually not a problem beyond 1500 m above sea level (Karubaga and Kimaru, 1999; Gold and Messiaen, 2000).



**Spotted
stemborer
Storage
pests
Sweet
potato
weevil
Termites
Thrips
Tomato
Yellow Leaf
Curl Virus
Disease
(TYLCV)
Turnip
Mosaic
Virus
(TuMV)
Weeds
Whiteflies
Medicinal
plants
Fruit and
vegetable**

**Banana corm damaged by
banana weevil. Note
tunnelling by weevil grubs
and rotting of corm.**

© A. M. Varela, icipe

Host range

Banana weevil is an important pest of banana and plantain (*Musa* spp.), and ensete (*Ensete* spp.). Weevil problems appear to be most severe in plantains, highland cooking bananas and ensete. The weevil has contributed to the decline and disappearance of highland cooking banana in parts of East Africa. Weevil pest status in other groups of bananas is variable. In commercial Cavendish plantations, the banana weevil has been reported to be relatively unimportant (Gold and Messiaen, 2000).

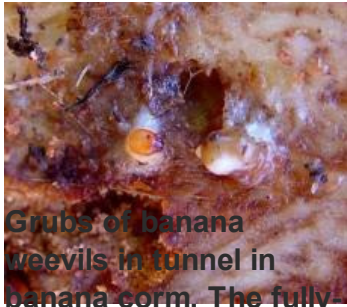
Symptoms

Infestation by the banana weevil begins at the base of the outermost leaf-sheath and in injured tissues at the lower part of the pseudostem. Initially the young grubs make several longitudinal tunnels in the surface tissue until they are able to penetrate to adjacent inner leaf-sheaths; they then bore into the pseudostem base and rhizome/corm, but also into the base of suckers and into roots. Larval tunnels may run for the entire length of fallen pseudostems. Infested plants have dull yellow green and floppy foliage. Young infested suckers often wither and fail to develop. Plants are easily blown down by mild to strong winds.

processing**Affected plant stages****Natural pest control****Flowering stage, fruiting stage, seedling stage and vegetative growing stage.****Cultural practices****Affected plant parts****Roots and stems.****Symptoms by affected plant part****Roots: internal feeding****Stems: internal feeding**[back to Index](#)**Biology and Ecology of the Banana Weevil**

The eggs are elongate-oval, about 2 to 3 mm long and white in colour. Eggs are laid singly in small cavities that are chewed out by the female in the base of the pseudostem just above ground level, in the upper part of the corm, in roots near the soil surface and at the end of cut stems (stumps). Due to their white colour they are rarely seen in the corm tissue. The duration of the egg stage is very variable (4 to 36 days) depending on temperature. Hatching takes place after 6 to 8 days under tropical conditions.

The larvae (grubs) are creamy white legless grubs, stout and distinctly curved and swollen in the middle of the body. The head is reddish-brown with strong mouthparts.



Grubs of banana weevils in tunnel in banana corm. The fully grown larva is about 1 cm long.

Fully-grown grubs are about 12 mm long. Under tropical conditions, the larvae complete their development and pupate in 20 to 25 days.

© A. M. Varela, icipe



Pupae are white and about 12 mm long. Pupation takes place in holes bored by the grubs; as it develops, the shape of the adult becomes visible. Adults emerge from the pupae 5 to 7 days after pupation.

Pupa of banana weevil is white and about 12 mm long (picture much enlarged). As it develops,

the shape of the adult becomes visible.

© A. M. Varela, icipe



Banana weevil

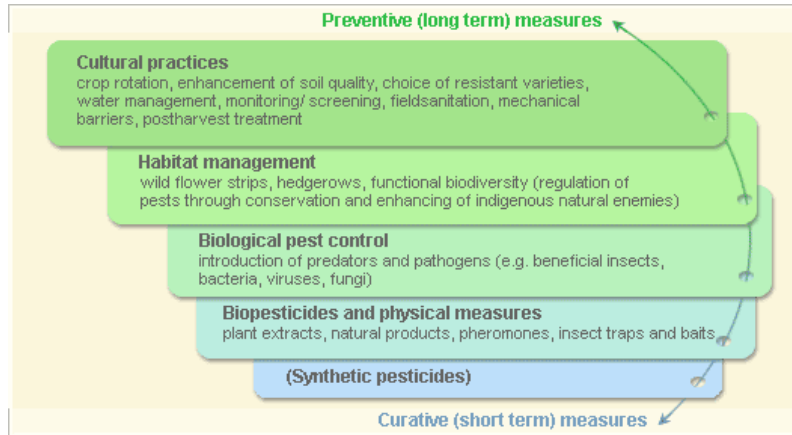
© A.M. Varela, icipe

Adults are 10 to 16 mm long weevils (snout beetles), hard-shelled, with a rather long curved snout. Newly emerged weevils are red brown, turning almost black after a few days. They are free living, they are most commonly found between leaf sheaths, in the soil at the base of the mat or associated with crop residues. They often remain within the plant before biting the external sheath and leaving the banana plant. They feed on dead banana plants, newly cut stems and other decaying plant material near the base of banana plants. Weevils may live for up to two years, and can live without food for six months, but are very sensitive to desiccation and will die within 48 hours if kept in a dry substrate. They are active at night. The adults are sluggish rarely fly, but commonly walk over the soil surface and vegetation and feign death when disturbed. Adults are not strong flyers and only cover short distances.

[back to Index](#)

Pest and disease management

Pest and disease Management: General illustration of the concept of *infonet-biovision*



These illustration shows the methods promoted on infonet-biovision. The methods shown at the bottom have a long-term effect, while methods shown at the top have a short-term effect. In organic farming systems, methods with a long-term effect are the basis of crop production and animal husbandry and should be used with preference. On the other hand methods with a short-term effect should be used in emergencies only. On infonet we do not promote synthethic pesticides.

Further below you find concrete preventive and curative methods against Banana weevil.

[back to Index](#)

Cultural practices

Use clean planting material. Planting infected rhizomes/corm and suckers increases damage. This can be done by:

- **Selecting vigorous healthy planting material obtained from plants free of weevils. Examine planting material by taking one or two slices from it. If grubs, pupae or tunnels are present, the material should be destroyed.**
- **Paring (Trimming). If clean planting material is not available the planting material should be pared (trimmed) to reduce the number of eggs and grubs. However, badly damaged suckers should not be used for planting. Paring allows for superficial inspection of the rhizome surface and rejection of suckers containing weevil damage. However, significant internal damage may be present on suckers in which the rhizome displays little evidence of attack. Paring and removal of outer leaf sheaths also helps to remove most weevil eggs and nematodes.**
- **Hot water treatment. Recommendations suggest immersing clean trimmed suckers in a bath with hot water at 52 to 55°C for 15 to 27 minutes before planting. There have been reports of hot water treatment killing remaining eggs and a high percentage of grubs. For example, Gettman et al. (1992) reported over 99% mortality of weevil eggs and grubs when suckers of dessert bananas were placed in a water bath of 43°C for 3 hours. However, other sources indicate that**

hot baths are very effective in eliminating nematodes, but kill only a third of the weevil grubs. Thus, hot water treatment of planting material is likely to provide protection against weevil for several crop cycles only (Gold and Messiaen, 2000).

A simple method for farmers to control temperature has been developed in Kenya. It consists of a pith block (of about three cm) or a small piece of wood tied to an iron plate (3 x 3 cm and weighing about 10 g) covered with a thin film of candle wax. This device is allowed to sink in a half-empty oil drum with water, in which the banana material to be treated is placed. Wood is burnt underneath the drum, when the temperature rises to 55°C the wax melts releasing the pith or piece of wood, which then floats to the surface. At this moment the firewood is removed. (Prasad and Seshu Reddy, 1994).

Do not replant previously infested land while old corms remain on the ground, or where insufficient time has passed for adult weevils to die after remnants of the previous crop has been removed.

Plant clean planting material as soon as possible in a new plantation. They should not be left overnight in heaps since they attract weevils and could be reinfested before planting.

Harvesting of all mature pseudostems at certain intervals, rather than continually, is suggested as a preventive measure of control. This discourages the continuous breeding of the weevil, as then there will be periods in which few young suckers

are present (CABI).

Avoid moving infested plant material from plantation to plantation as this will spread banana weevils.

Sanitation

Practice good crop hygiene:

- **Cut old stems after harvesting at ground level. Covering the cut rhizome with a layer of soil is said to prevent the weevil's entry and egg laying.**
- **Cut old stems as soon as the bunch is harvested and wind-damaged pseudostems (stumps) into small pieces and scatter them so that they quickly dry and thus do not attract the weevils. Alternatively, they can be cut into larger pieces and use for trapping weevils (see below)**
- **Dig out and remove old corms, trash and other materials in which weevils may breed.**

Practice good crop husbandry to produce vigorous banana plants, which are more able to tolerate weevil damage:

- **Use mulch. Spread mulch away from banana stool leaving a clear ring of about 60 cm from the base of the stool to keep the roots from growing towards the surface, and to avoid moist conditions near the stool, which will attract banana weevils.**
- **Desucker and remove water suckers regularly**
- **Clean matts of dead leaves and plant debris**

- **Keep the plantation free of weeds at all times.**
- **Ensure proper fertilization. Application of manure is important in the early stages of growth of the banana plant.**

[back to Index](#)

Biological pest control

Natural enemies

Predatory ants such as the bigheaded ant (*Pheidole megacephala*) and *Tetramorium* spp. are important predators of the banana weevil. Although these ants are generalists (feed on a wide variety of food materials such as nectar, sugar, honeydew, other insects substances with high fat content, etc.) high populations in banana stands make them very efficient predators. They will enter crop residues and living plants in search of weevil eggs, grubs and pupae. These ants have reportedly contributed to the successful control of banana weevil in plantain in Cuba. These ants can be encouraged to nest in pseudostem pieces that can then be used for further distribution. They are widespread and may also be important predators on the weevil in other localities. Studies in Tanzania and Uganda have shown that several species of ants are important natural enemies of the banana weevil in the region (Aberra, et al, 2007, A. M. Varela, icipe, personal communication).

Some fungi (e.g. *Beauveria bassiana* and *Metarhizium anisopliae*) have shown efficacy as control agents of this pest. Some of them caused weevil mortality of

over 90%. In Cuba, the fungus *Beauveria bassiana* is reported to be effective against the banana weevil in combination with ants (CABI, 2000). However, there is little information on the performance under field conditions. Moreover, the distribution and application of these biocontrol agents are still restricted by lack of facilities and high costs.

Some nematodes, (*Steinernema* and *Heterorhabditis* spp.) attack both adults and grubs in the field, but economic cost and their efficacy restricted only to high weevil population levels limit their use on a larger scale (Gold and Messiaen, 2000).

[back to Index](#)

Biopesticides and physical methods

Neem (*Azadirachta indica*)

Applications of neem powder effectively controlled weevils and nematodes in on-farm trials and in farmer's fields in Kenya. Application of 60 to 100 g of neem seed powder or neem cake at planting and then at four months intervals significantly diminished pest damage and increased yields. Application of over 100 g or neem oil was phytotoxic (harmful to plants) and uneconomical.

Neem applications were economical in fertile soils with moderate pest infestation. Neem applications to banana plants grown in poor soil and under very high pest attack were uneconomical. A combination of application of cow dung and neem treatments resulted in yield increases of 50 to 75% (Musabyimana, 1999). Dipping

suckers in a 20% neem seed solution at planting protects the young suckers from weevil attack by reducing egg laying through its repellent effect on adult weevils. Egg hatching rates may also be lowered in neem-treated plants (Gold and Messiaen, 2000).

For more information on Neem [click here](#).

Trapping

Disc-on-stump traps and old pseudostems can be used for trapping weevils. Disc-on-stump traps consist of corm slices placed on top of harvested plants cut at the rhizome. Old pseudostems can be cut into lengths of 20 to 60 cm and split each length, and placed on the ground near the corm bases with the cut surface downwards. Adult weevils are attracted to the cut stems or corms for shelter, to feed and to lay eggs. When the eggs hatch the life cycle cannot continue as the cut pieces dry out and the grubs die from desiccation. The weevils can be collected by hand and destroyed. The efficiency of the traps depends on their numbers and frequency of trapping. Disk-on-stump traps collect 3 to 7 times as many weevils as pseudostem traps.

[back to Index](#)

Information Source Links

- Abera-Kalibata, A. M., Gold, C. S, Van Driesche, R. G. and Ragama, P. E. (2007). Composition, distribution, and relative abundance of ants in banana farming systems in Uganda. Biological Control. Volume 40, issue 2, February**

2007, Pages 168-178.

- **Treverrow N. (1985). Banana weevil borer. Agfact H6.Ae.1. Department of Agriculture, New South Wales. Addex 231/622.**
- **Gold C.S. and Messiaen S. (2000). The banana weevil. *Cosmopolites sordidus*. Pest Fact Sheet No 4.**

<http://www.bioversityinternational.org/publications/pdf/696.pdf>

- **CABI. (2000): Crop Protection Compendium, Second Edition. © CAB International Publishing. Wallingford, UK. www.cabi.org**
- **CABI. (2004): Crop Protection Compendium, 2004 Edition. © CAB International Publishing. Wallingford, UK. www.cabi.org**
- **Gettman AD, Mitchell WC, Li P, Mau RFL, 1992. A hot water treatment for control of the banana root borer, *Cosmopolites sordidus* (Germar) (Coleoptera: Curculionidae) in banana planting stock. Proceedings of the Hawaiian Entomological Society, 31:59-63.**
- **Hill, D. (1983). Agricultural insect pests of the tropics and their control. 2nd edition. Cambridge University Press. ISBN: 0-521-24638-5.**
- **Kranz, J., Schmutterer, H. and Koch, W. (1977). Diseases, pests and weeds in tropical crops. Verlag Paul Parey. ISBN: 3-489-68626-8.**
- **Musabyimana T., Saxena R. C., Kairu E. W., Ogot C.P.K.O., Khan Z. R. (2001). Effects of Neem Seed Derivatives on Behavioral and Physiological Responses of the *Cosmopolites sordidus* (Coleoptera: Curculionidae). Journal of Economic Entomology 94: 449-454.**
- **Musabyimana, T. (1999). Neem seed for the management of the banana weevil *Cosmopolites sordidus* Germar (Coleoptera: Curculionidae) and banana parasitic nematodes. PHD Thesis. Icipe**

- **Tree Crop Propagation and Management - A farmer-trainer training manual. Integration of Tree Crops into Farming Systems Project (ITFSP) GTZ and MoARD (Kenya). October 2002.**

[back to Index](#)

Jun 25, 2009 - [Disclaimer](#)

[Search](#)

[Publications](#) [Publications](#) [TOC](#) [TOF](#)



[Home](#) [Help](#) [Contact](#)

You are here: [Home](#) > [Plant Health](#) > [Pests/ diseases/ weeds](#) > Sweet potato weevil

[Back](#)

[Print](#)

Crops/ fruits/
vegetables

[Pests/
diseases/
weeds](#)

[African
armyworm](#)

[African
bollworm](#)

[African
cassava](#)



[more Images](#)

Sweet potato weevil

Scientific name: *Cylas* spp

Order/Family: Coleoptera: Brentidae (=Curculionidae)

Type: pest (insect/mite)

Host plants: Sweet potato (Minor host plants: Coffee, maize, cowpea, sesame)

[General Information on Pest and
Damage](#)

[Biology and Ecology of Sweet Potato
Weevil](#)

[Cultural practices](#)

[Biological pest control](#)

mosaic virus
(ACMV)

Pest and Disease Management

Information Source Links

African
maize

General Information on Pest and Damage

stalkborer

Geographical distribution

Anthraxnose

Aphids

Bacterial
wilt

Bagrada
bug

Banana
weevil

Black rot

Cabbage
looper

Cabbage
moth

Cabbage
webworm

Couch grass

Cowpea
seed beetle

Cutworms



Geographical
Distribution of the
Sweet potato weevils
in Africa (red
marked)

Introduction

The African sweet potato weevil (*Cylas puncticollis*) is one of the most important pests of sweet potato in tropical Africa, notably Uganda, Rwanda, Kenya and Cameroon. *Cylas brunneus* is known from West and Central Africa and some countries in East Africa (Rwanda, Burundi and Kenya). These two species are found together attacking sweet potatoes in East and West Africa (Hill, 1983). *Cylas*

Damping-off diseases	<i>formicarius</i> is a destructive pest of sweet potato throughout most of the tropical and subtropical regions and occurs in several African countries.
Diamondback moth (DBM)	Damage
Downy mildew	Adult weevils feed on leaves, the underground storage roots (tubers) and the vines of sweet potatoes. They prefer to feed on storage roots, but at the beginning of the growing season, when the plants have not yet produced storage roots, the adult weevils live on the stem and leaves. They lay eggs on vines and leaves, and the grubs will feed in the stem or the leaf and pupate inside the vines.
Early blight	
Fruit flies	
Fusarium wilt	
Larger grain borer	As the plant gets older and starts to form storage roots, the weevils search for exposed roots. Since they cannot dig, they reach the tubers through cracks in the soil. Weevils feed on the storage roots and lay eggs just below the surface of the root. Feeding and egg-laying punctures (numerous small holes) lower the quality of the root and can reduce the market price. If roots with egg punctures are stored they will serve as source of infestation for the clean roots stored beside them.
Late blight	
Leafmining flies (leafminers)	Adult feeding on the foliage seldom is of importance.
Mango seed weevil	
Mealybugs	The grubs are more damaging, feeding and boring and making tunnels into the stems and roots. Damage to the stems may cause serious mortality to seedlings. Allard et al. (1991) report on serious weevil attacks on sweet potato nurseries in Ethiopia. Feeding in the vines causes thickening and malformation and often cracking of the tissue. A damaged vine is discoloured, cracked, or wilted. Stem damage is believed to be the main reason for yield loss, although damage to the vascular system caused by feeding, larval tunnelling and secondary rots reduces
Powdery mildew	
Purple witchweed	
Root-knot	

nematodes

the size and number of roots.

Snails

(Giant East African Snail)

Spider mites

Spotted stemborer

Storage

pests

[Sweet potato weevil](#)

Termites

Thrips

Tomato

Yellow Leaf Curl Virus

Disease (TYLCV)

Turnip

Mosaic Virus

(TuMV)



Sweet potato weevil symptoms on tuber.

© Courtesy of Institute of Plant Biotechnology for developing Countries, Ghent University, Belgium (www.ipbo.ugent.be)

Host range

The main host of all species of sweet potato weevil is sweet potato, alternate hosts are morning glory, water spinach (*Ipomoea aquatica*) and other Ipomea weeds.

An infested tuber is often riddled with cavities or tunnels; these wounds serve as entry point for infections, causing rotting of tubers. Attacked tubers start rotting from the top and develop an unpleasant smell and a bitter taste, making them unfit for human consumption. Even low level of infestation can reduce root quality and marketable yield because the plants produce a bitter toxin (a terpenoid) in response to feeding by weevils.

Weevil damage increases the longer the crop remains not harvested. In Kenya, where farmers practice piecemeal harvesting, losses are in the order of 10%. Pest damage usually continues during storage, therefore infested tubers cannot be stored for a long time. In conjunction with other beetle pests, *C. puncticollis* can completely destroy sweet potato plantations.

Damage by weevils can be recognised by the holes in the vines or the tunnels in the tuber when you pull them up from the soil.

Weeds
Whiteflies
Medicinal plants
Fruit and vegetable processing
Natural pest control
Cultural practices

***Cylas bruneus* has only been reported on sweet potatoes. *Cylas puncticollis* has also been reported on coffee, maize, cowpea, sesame, and *Cassia acutifolia* (*C. senna*)(CABI).**

Symptoms

A symptom of infestation by sweet potato weevils is yellowing, cracking and wilting of the vines, but a heavy infestation is usually necessary before this is apparent. Damage by weevils can be recognised by the holes in the vines or the tunnels in the tuber when you pull them up from the soil. Attacked tubers become spongy, brownish to blackish in appearance.

Affected plant stages

Flowering stage, fruiting stage, post-harvest and vegetative growing stage.

Affected plant parts

Leaves, roots and stems.

Symptoms by affected plant part

Leaves: external feeding

Roots: rot; internal feeding; external feeding.

Stems: external discoloration; abnormal forms; internal feeding; external feeding.

[back to Index](#)

Biology and Ecology of Sweet Potato Weevil

The egg is oval in shape and yellowish-white in colour. It is laid singly in small cavities on the sweet potato root or at the base of the vine. The cavity is then sealed with a plug of the mother's excrement (faecal material). The egg hatches in about 3 to 7 days depending on the environmental conditions.

The larva is a legless grub, white in colour. The fully-grown grub is about 8 mm long. The head is comparatively large, and brown or pale-yellow. The body is slightly curved. The grub is found feeding on the vine near the base of the plant and goes down to the roots to feed. Larvae develop for 11 to 33 days before pupating.

The fully-grown grub turns into a pupa in an enlarged area of the feeding tunnel. The pupa is whitish and about 6 mm long. Initially it is white, but with time it becomes greyish in colour with darker eyes and legs. The pupa is similar to the adult in appearance, although the wings, the head and the long snout are bent downwards. Adults emerge after 7 to 28 days depending on the environmental conditions.

The adult insect is a weevil. Weevils are beetles



Sweet potato weevil larvae on sweet potato. The full-grown larva about 8 mm long.

© Clemson University - USDA Cooperative Extension Slide Series (www.bugwood.org)

with a long pointed snout. The body of the sweet potato weevil is slender resembling ants. The length of the adult is between 6 to 8 mm. They vary in colour in size according to the species. *Cylas puncticollis* is larger and entirely black. *Cylas brunneus* is brown with blue or bluish-green elytra (hard wings) and reddish legs, and is smaller than *C. puncticollis*. *Cylas formicarius* is as small as *C. brunneus* but has a bluish-black abdomen and a red thorax.

The weevils complete their lifecycle in the storage roots (tubers). They flight infrequently and generally only for short distances (500 to 1000 m). The development of the weevil from egg to adult takes 32 days in average.



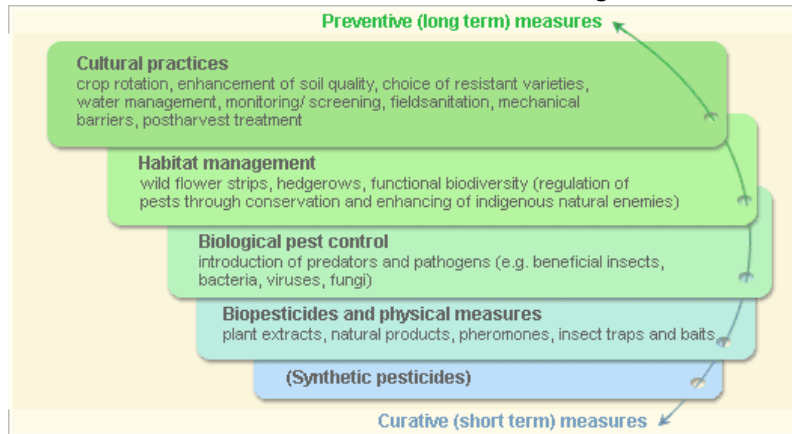
Sweet potato weevil. Adult female, body length 6 to 8 mm.

© Land Care Ltd. New Zealand. Courtesy of EcoPort (www.ecoport.org)

[back to Index](#)

Pest and Disease Management

Pest and disease management: General illustration of the concept of *infonet-biovision*



These illustration shows the methods promoted on infonet-biovision. The methods shown at the bottom have a long-term effect, while methods shown at the top have a short-term effect. In organic farming systems, methods with a long-term effect are the basis of crop production and should be used with preference. On the other hand methods with a short-term effect should be used in emergencies only. On infonet we do not promote synthethic pesticides.

Further below you find concrete preventive and curative methods against Sweet potato weevils.

[back to Index](#)

Cultural practices

Monitoring

At the beginning of the growing season, when the plants have not yet produced any storage roots, the adult weevils are commonly found on the foliage, but they quickly drop to the ground if disturbed. During the day they often hide under leaves or in soil cracks. Most of the larvae are found in the upper 15 cm of the tubers and basal 10 cm of the vine. Select storage roots that appear soft, smell, or have external scarring or small, darkened holes. Cut these open and look for tunnelling and larvae. Pheromone traps are useful in monitoring weevil populations, but this technology is expensive and not widely available. Efforts are going on to develop pheromones traps for monitoring and control in East Africa (refer to section on traps below).

Among various control measures attempted, modification of cultural practices has the greatest potential in combating the sweet potato weevil at low cost.

Crop rotation

Avoid planting sweet potatoes in the same area for two to three successive seasons. It has been suggested that, if possible, sweet potatoes should be grown in a field only once every five years. Rice and sorghum are often used in rotation with sweet potatoes. This rotation will help break up the cycle of the weevil and will help to control sweet potato weevil, particularly if integrated with other management approaches, such as the ones described below.

Intercropping

Experimental studies in Taiwan showed that intercropping with chickpea, coriander, pumpkin, radish, fennel, black gram and yard long bean reduced weevil infestations considerably. However, intercropping with black gram, fennel, pumpkin, and yardlong bean also reduced sweet potato yields. The best results were obtained with coriander. Similarly, reduced weevil damage was observed when sweet potato was intercropped with proso millet and sesame, but sweet potato yield was also considerable reduced. Sweet potato has been found to inhibit germination of proso millet (Peterson et al., 1999).

Planting time

Plant early or plant early maturing varieties. This will allow harvesting before the end of the growing season, minimising in that way the risk of drought and consequently the damaging effect of weevils, which enter the soil through cracks.

Use of clean cuttings

Carry-over of the weevils from an infested crop to the new planting could be reduced by carefully selecting fresh cuttings for planting a new crop. Use clean (insect-free) vines as planting material. Prefer planting material from vine tips. Weevils tend to lay eggs in the older woodier parts of the vine, so if the tender tips are used for planting they are less likely to be infested by weevils. Studies in Taiwan showed that cuttings (25 to 30 cm long) taken from fresh terminal growth, even from an infested crop, were rarely infested with weevils, whereas older portions of the stem were (AVRDC).

Keep distance to infected fields

Planting away from weevil-infested fields, and or use barrier crops such as cassava, maize, bananas or sorghum planted around the perimeters in stripes of at least 3 to 5 m in width between fields to restrict movement of weevils between fields (CIP, VITAA).

Avoid soil cracking

Avoid or minimise cracks in the soil. Soil cracks are the major route of weevil access to roots. This can be done by:

- **Planting cuttings deep in the soil and using of deep-rooted cultivars reduce weevil damage. The growth of roots, especially in cultivars that set roots near the soil surface can produce cracks and increase exposure of roots to the weevil.**
- **Ridging: it prevents the soil from cracking by hilling the area around the plant. Re-hill mounds about 30 days after planting to close soil cracks. Close ridges after piecemeal harvests to cover exposed tubers. This should be implemented before the adult weevil reaches the roots.**
- **Mulching: mulches conserve soil moisture and minimise soil cracking. The physical cover made by mulching materials further reduces access of roots to the weevil even if the soil cracks. The soil surface should be covered soon after planting and the cover should be maintained until harvest.**
- **Routine irrigation: it is important to provide sufficient water to prevent soil cracking. This is a practical method for farmers with a reliable water supply.**

Sanitation

Remove and destroy (through burying, burning or feeding to livestock) any crop residues left in the field after harvest. Infested roots must be completely buried (over 15 cm deep); avoid cracks, which allow emerging weevils to reach the soil surface. If vines are left in the field to improve soil fertility, care should be taken to ensure they are dead and not able to sprout. Care should be taken to remove and destroy any infested roots when doing piecemeal harvest.

Field sanitation is important because weevils survive in roots and stems and infest succeeding or neighbouring sweet potato plantings. However, to effectively reduce weevil infestation it should be practised in a large area or community. Clean cultivation is particularly important where rotation is not possible, for example in areas where sweet potato is a staple food and is planted year-round.

Flooding of fields

Flooding of infested fields for at least 48 hours after completing harvest drowns weevils, induces rotting of the leftover plant materials and thereby reduces weevil densities from one planting to the next. This is an option in areas where rotation is not possible.

Flooding of fields between two consecutive sweet potato crops may reduce the immediate source of weevils from the field.

Early harvesting

Harvest the crop as soon as it has developed roots of acceptable size.

Control of alternative hosts

Alternative hosts of the sweet potato weevil (e.g. morning glory, water spinach, wild Ipomoea etc) can shelter weevils between planting seasons and serve as a source of weevil infestation when a new crop of sweet potato is planted. Therefore, removal of these host plants growing in the vicinity of sweet potato plantings is recommended as a control measure. However, indiscriminate elimination of these plants is not recommended since they may also be lead to undesirable ecological effects. To minimise this, all Ipomoea could be eliminated for one cropping season and allowed to grow in the subsequent seasons, once the area is free of the weevils.

[back to Index](#)

Biological pest control

Natural enemies

Predatory ants, earwigs, spiders and ground beetles are important predators of the sweet potato weevil. Among those ants seem to be most important. In Cuba, two species of predatory ants, *Pheidole megacephala* and *Tetramorium guineense*, which are common inhabitants of banana plantations, are used for control of sweet potato weevils. These ants are encouraged in reservoir areas, such as patches of forest, where they are naturally abundant. Ants nests are moved by a simple

method using rolled banana leaves as 'temporary nests' to transport the ants from their natural reservoir to sweet potato fields, or banana stems, baited with honey, are placed in the reservoir areas and, when covered in ants, transported to the sweet potato fields. The ants then prey upon sweet potato weevils and other insects. Setting up colonies in the field 30 days after planting with 60 to 110 nests/ha can keep weevil infestation at low levels (3 to 5%) (FFTC; Sheehy Skeffington, 2006).

Disease-causing microorganisms, especially the fungus *Beauveria bassiana*, have been observed to cause high mortality of sweet potato weevils in the field under conditions of high humidity and high insect density. This fungus is commercially available in some countries. It can be used for treating the planting material and the soil to reduce soil infestation.

Traps

Pheromone traps are widely used for monitoring the sweet potato weevils. However, these traps are expensive and not widely available. In 1995, a collaborative project of the National Agricultural Research Institutes, Natural Resources Institute (NRI), and the International Potato Center (CIP) began developing pheromones for monitoring and controlling the African sweet potato weevils in East Africa. Pheromone compounds that proved effective in catching male weevils under field conditions in Uganda were identified, and several traps were tested. A five-litre plastic jerry can with rectangular openings of 11×5 and 6×5 cm filled with 0.5 l soapy water (1 g Omo/1 l water), with 0.1 mg lures to be replaced every 8 weeks is presently the most effective and robust trapping system.

Experiments on the use of these traps for mass trapping of males for weevil control are going on (CIP; Smit et al., 1997).

[back to Index](#)

Information Source Links

- **Allard G.B, Cock M.J.W and Rangi D.K, (1991). Integrated control of arthropod pests of root crops, final report. Nairobi, Kenya: CAB International.**
- **CABI. (2005). Crop Protection Compendium, 2005 Edition. CAB International Publishing. Wallingford, UK. www.cabi.org**
- **CIP. Manual for Sweet potato Integrated Production and Pest Management Farmer Field Schools in Sub-Saharan Africa. The VITAA Partnership. Last Updated June 16, 2004 <http://www.cipotato.org/vitaa/manual.htm>**
- **CIP.
http://www.cipotato.org/publications/program_reports/95_96/program4/prog46.asp**
- **Chalfant R.B., Jansson R.K, Seal D.R. and Schalk J.M, 1990. Ecology and management of sweet potato insects. Annual Review of Entomology, 35:157-180.**
- **Daiber K.C. (1994). Injurious insects, spider mites and nematodes on sweet potatoes in southern Africa. Zeitschrift für Pflanzenkrankheiten und Pflanzenschutz, 101(5):550-557.**
- **Dunguni FFS (Farmer Field School), Kilifi, Kenya**
- **FFTC. A Sustainable Pest Management Strategy for Sweet potato Weevil in Cuba: A Success Story. INIVAP. Food & Fertilizer Technology Center for the Asian and Pacific Region. By A. Lagnaoui. <http://www.agnet.org>**
- **Hill, D. (1983). Agricultural insect pests of the tropics and their control. 2nd**

edition. Cambridge University Press. ISBN: 0-521-24638-5.

- OISAT (Organisation for Non-Chemical Pest Management in the Tropics)
www.oisat.org

- Peterson, J.K., Harrison, H.F. Jr. and Snook, M.E. (1999). Comparison of three parameters for estimation of allelopathic potential in sweet potato (*Ipomoea batatas* (L.) Lam.) germplasm. Allelopathy Journal 6: 201-208.
- Pfeiffer H.J, (1982). Sweet-potato improvement in Cameroon. Root crops in eastern Africa. Proceedings of a workshop held at Kigali, Rwanda, 23-27 November 1980, 33-38.
- Plant Protection and Regulatory Services Directorate (PPRSD). (2000). Handbook of crop protection recommendations in Ghana: An IPM approach. Vol. 3: Root and Tuber Crops, Plantains. E. Blay, A. R. Cudjoe and M. Braun (editors). Published by PPRSD with support of the German Development Cooperation (GTZ). ISBN: 9988-8025-6-0.
- Sheehy Skeffington, M. (2006). Organic fruit and vegetable growing as a national policy: the Cuban story. <http://www.energybulletin.net>
- Smit N.E.J.M. and Matengo L.O., 1995. Farmers' cultural practices and their effects on pest control in sweetpotato in south Nyanza, Kenya. International Journal of Pest Management, 41(1):2-7.
- Smit, N. E. J. M.; Downham, M. C. A.; Odongo, B.; Hall, D. R. and Laboke, P. O. (1997). Development of pheromone traps for control and monitoring of sweetpotato weevils, *Cylas puncticollis* and *C. brunneus*, in Uganda. Entomologia Experimentalis et Applicata. Publisher Springer Netherlands ISSN0013-8703 (Print) 1570-7458 (Online) Issue Volume 85, Number 2 / November, 1997
- Talekar, N. S. (1991). Integrated control of *Cylas formicarius*. In Sweet potato

Pest management: A global prespective. Jansson Kuraman. Eds. Westview Press. Pp. 139-156.

- **Youdeowei, A. (2002). Integrated Pest Management Practices for the Production of Root and Tubers and Plantains. Integrated Pest Management Extension Guide 3. Ministry of Food and Agriculture (MOFA) Plant Protection and Regulatory Services Directorate (PPRSD), Ghana, with German Development Cooperation (GTZ). ISBN: 9988-0-1087-7.**

[back to Index](#)

Sep 18, 2009 - [Disclaimer](#)

[Search](#)

[Publications](#) [About us](#) [TOF](#)



[Home](#) [Help](#) [Contact](#)

You are here: [Home](#) > [Plant Health](#) > [Pests/ diseases/ weeds](#) > Couch grass

[Back](#)

[Print](#)

Crops/ fruits/
vegetables

[Pests/
diseases/
weeds](#)

African
armyworm



[more Images](#)

Couch grass

Scientific name: *Cynodon dactylon*

Order/Family: Cyperales, Poaceae

Type: weeds

Common names: Bermuda grass, Bahama grass, Common star grass, Dhub grass, Devil grass

Host plants: Maize

**African
bollworm
African
cassava
mosaic virus
(ACMV)
African
maize
stalkborer
Anthracnose
Aphids
Bacterial
wilt
Bagrada
bug
Banana
weevil
Black rot
Cabbage
looper
Cabbage
moth
Cabbage
webworm**

**General Information on Pest and
Damage
Biology and Ecology
Pest and Disease Management**

Notes for REVISION

**Cultural practices
Information Source Links**

General Information on Pest and Damage

Geographical distribution



Couch grass (*C. dactylon*) is thought to have originated in Africa but now occurs worldwide in both tropical and subtropical regions.

**Geographical
Distribution of
Couch grass in
Africa (red marked)**

Couch grass Introduction

Cowpea seed beetle The couch grass (*C. dactylon*) is treated by Holm et al. (1977) as the second most important weed in the world (after *Cyperus rotundus*), a status that is justified by its occurrence in virtually every tropical and subtropical country and in virtually every crop in those countries.

Cutworms

Damping-off diseases

Diamondback moth (DBM)

Downy mildew

Early blight

Fruit flies

Fusarium wilt

Larger grain borer

Late blight

Leafmining flies

(leafminers)

Mango seed weevil

Mealybugs

Powdery

The weed is an alternate host of some plant diseases such as brown spot, leaf spot, early blight, stripe disease of rice, barley yellow dwarf, lucerne dwarf and of nematodes. Couch grass is used as a cover crop to control erosion and for soil stabilization, feed for livestock, lawn beautification and herbal medicine.

Description:

The stem creeps at full-length along the ground. The leaves are small, linear and blue-green with rough margins. The undersides are smooth but hairy on the upper surfaces. The flowering stalks bear many slender and purplish spikelets. The fruit is reddish-brown or orange-red. The seeds are flattened, oval and straw-coloured.

The weed can be spread through seeds, runners, rooting nodes or underground rootstocks. It is mat forming. A single plant can produce up to 720 seeds. It can endure both extensive flooding and drought.

Host Range:

The crops in which couch grass is most commonly a major problem are those of the subtropics that are planted in wide rows, for example, cotton, sugarcane, tobacco, citrus, olive, deciduous fruit, forestry and ornamental species and many

mildew

vegetables, but also some closer-planted but less competitive crops such as rice, lucerne, lucerne and grass pastures, onion and jute.

Purple

witchweed

Root-knot

[back to Index](#)

nematodes

Biology and Ecology

Snails

(Giant East

C. dactylon tolerates a wide range of temperatures, especially very high temperatures in near-desert conditions. Freezing point ranges from -2 to -3°C. Growth is favoured by medium-to-heavy, moist, well-drained soils but *C. dactylon* will also grow on acid and quite highly alkaline soils and the rhizome system can survive flood conditions and drought.

African

Snail)

Spider mites

Spotted

stemborer

Storage

[back to Index](#)

pests

Pest and Disease Management

Sweet

potato

weevil

Pest and disease Management: General illustration of the concept of *infonet-biovision*

Termites

Thrips

Tomato

Yellow Leaf

Curl Virus

Disease

(TYLCV)

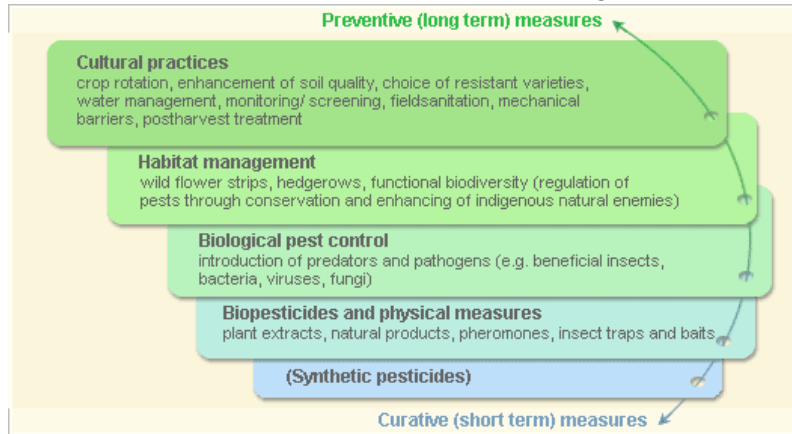
**Turnip
Mosaic
Virus
(TuMV)
Weeds
Whiteflies**

**Medicinal
plants**

**Fruit and
vegetable
processing**

**Natural pest
control**

**Cultural
practices**



These illustration shows the methods promoted on infonet-biovision. The methods shown at the bottom have a long-term effect, while methods shown at the top have a short-term effect. In organic farming systems, methods with a long-term effect are the basis of crop production and should be used with preference. On the other hand methods with a short-term effect should be used in emergencies only. On infonet we do not promote synthethic pesticides.

Further below you find concrete preventive and curative methods against Couch grass.

[back to Index](#)

Notes for REVISION

mh, 26.6.09 most open points have not been addressed since the last version received on 23 may 08. pls describe 'spikelets' for inclusion into glossary or exchange word.

[back to Index](#)

Cultural practices

Control Methods

- **Proper selection of seeds (ensure whatever crop you plant its seeds are not contaminated with couch grass seeds)**
- **Thorough land preparation**
- **Regular plant monitoring**

Legumes or other cover crops are sometimes used for smothering *C. dactylon* since the weed does not tolerate deep shade. Vigorous crops and higher crop density may be important in reducing weed competition.

Traditional techniques of controlling *C. dactylon* rely very little on manual methods, as it easily survives shallow hoeing and positively thrives on mowing. However, the benefits of deep cultivation have been confirmed in Botswana and Zimbabwe where double ploughing, either after crop harvest or before the onset of the next season's rains, provided a high degree of control and was beneficial to crop yields.

The main non-chemical approaches to control couch grass are deep tillage and shading/smothering crops.

For more information on weeds [click here](#)

[back to Index](#)

Information Source Links

- **CABI. (2005). Crop Protection Compendium, 2005 Edition. © CAB International Publishing. Wallingford, UK. www.cabi.org**
- **Holm, L.G. Plucknett, D.L. Pancho, J.V. Herberger, J.P. (1977). The world's worst weeds. Distribution and biology. Honolulu, Hawaii, USA: University Press of Hawaii. ISBN 0-8248-0295-0.**

[back to Index](#)

Jun 26, 2009 - [Disclaimer](#)

[**Search**](#)

[Publications](#) [About us](#) [TC](#) [TOF](#)



[Home](#) [Help](#) [Contact](#)

You are here: [Home](#) > [Plant Health](#) > [Pests/ diseases/ weeds](#) > [Damping-off diseases](#)

[◀ Back](#)

Crops/ fruits/

[Print](#)

vegetables

[Pests/ diseases/ weeds](#)

- African armyworm
- African bollworm
- African cassava mosaic virus (ACMV)
- African maize stalkborer
- Anthracnose
- Aphids
- Bacterial wilt
- Bagrada bug
- Banana weevil
- Black rot



[more Images](#)

Damping-off diseases

Scientific name: *Pythium* spp., *Rhizoctonia solani* (*Thanatephorus cucumeris*).

Order/Family: *Pythium* spp: Pythiales: Pythiaceae *Rhizoctonia* spp:

Ceratobasidiales: Ceratobasidiaceae

Type: disease (fungal)

Common names: Wilt, Damping-off, Seedling blight, Root rot, Rhizoctonia damping-off, Rhizoctonia

Host plants: Amaranth Cabbage/Kale, Brassicas Carrot Citrus plants Coffee Cotton Cowpea Cucumber Green gram

Groundnut Okra Peppers Rice Sorghum Tomato Wheat

[General Information on Disease and Damage](#)

[Cultural practices](#)

[Biology and Ecology of Damping-off Diseases](#)

[Information Source Links](#)

[Pest and Disease Management](#)

[General Information on Disease and Damage](#)

[Geographical distribution](#)

**Cabbage
looper
Cabbage
moth
Cabbage
webworm
Couch grass
Cowpea
seed beetle
Cutworms
[Damping-off
diseases](#)
Diamondback
moth (DBM)
Downy
mildew
Early blight
Fruit flies
Fusarium
wilt
Larger grain
borer
Late blight
Leafmining**



**Geographical
Distribution of
Damping-off
Diseases in Africa
(red marked)**

Damage

Damping-off is caused by a fungus, it usually occurs in small patches at various places in the seedbeds or field. The disease spots often increase from day to day until the seedlings harden. Seedlings are extremely susceptible for about two weeks after emergence. As the stem hardens and increases in size, the injury no longer occurs. Some seedlings are not killed at once, but the roots are severely damaged and the stem is girdled at the ground level. Such plants remain stunted and often do not survive

flies
(leafminers)
Mango seed weevil
Mealybugs
Powdery mildew
Purple witchweed
Root-knot nematodes
Snails
(Giant East African Snail)
Spider mites
Spotted stemborer
Storage pests
Sweet potato weevil
Termites

transplanting.

The injury from damping-off fungi is of two types:

- Pre-emergence damping off consists of a decay of the germinating seed or death of the seedling before it can push through the soil. This injury is a common cause of poor stands, which are often attributed to inferior quality of the seed or the untreated seeds. *Pythium* spp. and *Phytophthora* spp. cause seed decay.
- Post-emergence damping-off which occurs after the seedlings have emerged from the soil but while still small and tender. The roots may be killed, and affected plants show water soaking and shrivelling of the stems at the ground level; they soon fall over and die. Post-emergence damping-off is mostly caused by *Rhizoctonia* spp.



Okra seedlings affected by damping-off

© A.A. Seif & A.M. Varela, icipe

Host range

The fungal disease caused by *Rhizoctonia solani* has a very wide host range, infecting plant species belonging to 32 families, and 20 weed species from 11 families.

Symptoms

Thrips
Tomato
Yellow Leaf
Curl Virus
Disease
(TYLCV)
Turnip
Mosaic
Virus
(TuMV)
Weeds
Whiteflies
Medicinal
plants
Fruit and
vegetable
processing
Natural pest
control
Cultural
practices

In crucifers, this fungus causes damping-off and wirestem of seedlings in the seedbed; bottom rot and head rot in the field; and storage and root rot of horseradish, radish, rutabaga and turnip.

Damping-off:

Seeds can decay in cold wet soils and stems can become light brown and water-soaked near the soil line. Such seedlings wilt, topple and die. Wet soils and temperatures at or above 24°C favour disease development.

Wirestem in cabbage:

This is the most common and destructive phase of the disease. The stem above and below the soil line shrivels and darkens, and outer tissues come off leaving a dark wiry and woody inner stem. Such plants do not fall over, but they have an unhealthy stunted appearance. Some may die, but most survive and do poorly when transplanted to the field. When moisture is adequate, plants may produce a small poor-quality head.

Bottom rot in cabbage:

The disease occurs in mid-season as a carry-over from wirestem seedlings and from new infections that occur when outer leaves come in contact with moist infested soil. Lower leaves wilt, decay and turn black, but do not drop off. Some plants may recover and produce heads, but usually bottom rot develops into head rot.

Head rot in cabbage:

A firm to slimy dark decay at the base of outer leaves and in cabbage heads develops during the period between head formation and maturity. The fungus grows up to main stem, passing between the leaf petioles. Foliage leaves die and drop off, thus exposing the stem beneath the head. Over the whole head surface, brown fungus mycelia and tiny brown resting fungal bodies (sclerotia) may develop and be visible over the head surface. Secondary rot bacteria usually invade the diseased tissue and turn the head into a slimy foul-smelling mass.

Root rot:

It is usually dark brown, sunken and spongy. Infected tissues easily separate from advancing edges of the rot. A white to brown surface mould and irregular brown sclerotia distinguish this rot form other root rots. It mainly affects horseradish, radish, rutabaga and turnip.

Affected plant stages

Heading stage (in cabbage), post-harvest (in cabbage), pre-emergence, seedling stage and vegetative growing stage.

Affected plant parts

Leaves, roots, seeds, stems and whole plant.

Symptoms by affected plant part

Leaves: lesions; abnormal colours; abnormal forms; wilting; fungal growth.

Roots: lesions.

Seeds: rot; discolorations.

Stems: external discoloration; canker; abnormal growth; mycelium visible.

Whole plant: plant death; dieback; damping-off.

[back to Index](#)

Biology and Ecology of Damping-off Diseases

Many fungi are associated with damping-off diseases and seedling blights. The species most often encountered belong to *Pythium* spp. and *Rhizoctonia* spp. For the two an excess of moisture is recognized as the most important condition for damping-off and seedling blights.

Infection by *Pythium* spp. and *Rhizoctonia* spp. is favoured by:

- heavy soils
- low pH
- heavy seeding resulting in dense planting
- careless handling
- excessive soil moisture
- low light and presence of weeds

Exudates derived from host plants stimulate growth of these fungi.

Other fungi also implicated in causing damping-off and seedling blights include *Aphanomyces* spp., *Alternaria* spp., *Botrytis cinerea*, *Colletotrichum* spp., *Fusarium* spp., *Helminthosporium* spp., *Phytophthora* spp., *Sclerotinia* spp., and *Thielaviopsis* spp.

One feature that many of the fungi concerned have in common is their ability to survive for relatively long periods in soils. There are several forms in which they do so:

(1) as mycelium in the soil (e.g. *Rhizoctonia* spp.)

(2) as resting spores (e.g. oospores of *Pythium* spp. and *Phytophthora* spp., chlamydospores of *Fusarium* spp.) and

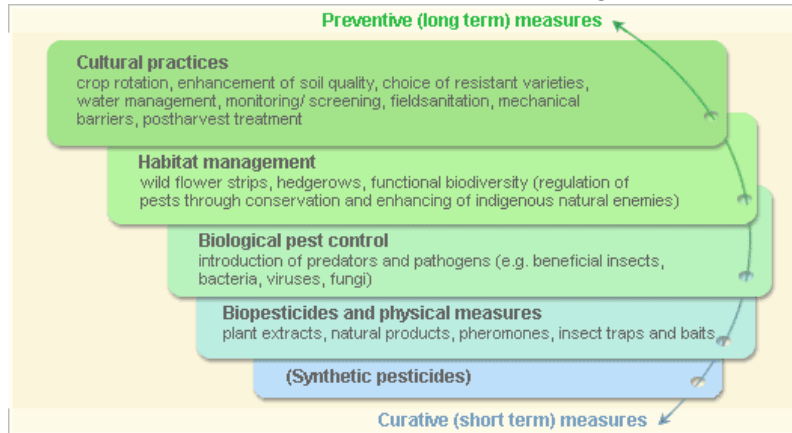
(3) as sclerotia (tiny brown resting fungal bodies) (e.g. *Sclerotinia* spp., *Rhizoctonia* spp. and *Botrytis cinerea*).

Spread of damping-off fungi depends primarily on the mechanical transfer of mycelia, sclerotia or resting spores in infested soilparticles (on flats, tools, baskets or end of the watering hose) or infected plant tissue.

[back to Index](#)

Pest and Disease Management

Pest and disease Management: General illustration of the concept of *infonet-biovision*



These illustration shows the methods promoted on infonet-biovision. The methods shown at the bottom have a long-term effect, while methods shown at the top have a short-term effect. In organic farming systems, methods with a long-term effect are the basis of crop production and should be used with preference. On the other hand methods with a short-term effect should be used in emergencies only. On infonet we do not promote synthethic pesticides.

Further below you find concrete preventive and curative methods against Damping-off Diseases.

[back to Index](#)

Cultural practices

General disease prevention

- **Good seedbed management**
- **Avoid fields with a history of the disease.**
- **Practise crop rotation.**
- **Deeply plough fields**
- **Use certified disease-free seeds. If using own seed, hot water treatment can be used. For more information on hot water treatment click here.**
- **Solarisation of seedbeds should be done where feasible. For more information on solarisation click here.**
- **Thin the seedlings in seedbeds to permit good air circulation.**
- **Avoid excessive watering and fertilisation, particularly with nitrate.**
- **Plant on raised beds to reduce moisture content in the root zone and provide the appropriate drainage in the field to prevent waterlogged conditions.**
- **Schedule planting times to avoid temperature and moisture conditions that are conducive to the pathogen. It also will reduce disease severity.**
- **As free water is important for distribution and development of the diseases, efforts to reduce soil moisture will help to reduce disease severity.**
- **Products of the soil fungus *Trichoderma* spp. are reported to suppress damping-off fungi**

Additional measures for:

- **Tomatoes: The seedbed should not be sited on a field previously planted with eggplant, pepper, potatoes, tomatoes or other related crops. Do not site the**

seedbed next or near to tomato production fields. The seedbed should preferably be up-wind to tomato fields.

- **Brassicas: Seedbeds and production fields should not have had crucifers for at least 3 years. All seedlings with wirestem symptoms should be discarded. During cultivation, take care to avoid throwing soil into plant heads.**
- **Okra: Avoid fields previously planted with cotton or other related crops.**

[back to Index](#)

Information Source Links

- **CABI (2005). Crop Protection Compendium, 2005 Edition. © CAB International Publishing.www.cabi.org**
- **ICIPE (2003). Varela, A.M., Seif , A.A. and Löhr, B. (2003). A Guide to IPM in Brassicas Production in Eastern and Southern Africa. ICIPE ISBN: 92 9064 148 7 www.icipe.org**
- **ICIPE (2003). Varela, A.M., Seif , A.A. and Löhr, B. (2003). A Guide to IPM in Tomato Production in Eastern and Southern Africa. ICIPE. ISBN: 92 9064 149 5 www.icipe.org**
- **ICIPE (2004). Varela, A.M., Seif , A.A. (2004). A Guide to IPM and Hygiene Standards in Okra Production in Kenya. ICIPE . ISBN: 92 9064 161 5 www.icipe.org**
- **Natural Resources Institute, University of Greenwich, UK (2002: Integrated Vegetable Pest Management - Safe and sustainable protection of small-scale brassicas and tomatoes. By Hans Dobson, Jerry Cooper, Walter Manyangarirwa, Joshua Karuma and Wilfred Chiimba. ISBN: 0-85954-536-9**

[back to Index](#)

Sep 18, 2009 - [Disclaimer](#)

[Search](#)

[Publications](#) [About us](#) [TOF](#)



[Home](#) [Help](#) [Contact](#)

You are here: [Home](#) > [Plant Health](#) > [Pests/ diseases/ weeds](#)

[Back](#)

[Print](#)

**Crops/ fruits/
vegetables**

Images

[Pests/
diseases/
weeds](#)

- African
armyworm**
- African
bollworm**
- African
cassava
mosaic virus
(ACMV)**
- African**



Mango seed weevil adult, after emerging of a mango. It is 8 mm long.

© Monique Hunziker, Biovision

17/10/2011

www.infonet-biovision.org 201003...

maize
stalkborer
Anthracnose
Aphids
Bacterial wilt
Bagrada bug
Banana weevil
Black rot
Cabbage looper
Cabbage moth
Cabbage webworm
Couch grass
Cowpea seed beetle
Cutworms
Damping-off diseases
Diamondback



Mango seed weevil close-up, after emerging of a mango. It is 8 mm long.

© Monique Hunziker, Biovision



Damage by mango seed weevil larvae. First instar larvae of the mango seed weevil are elongate, cylindrical, legless and extremely slender; they are 1.3 to 1.4 mm long. The body is white and the head is black. Final instar larvae are white and legless, they have a curved form, and are 1.6 - 1.8 cm long.

© Peter A. Follet. Reproduced from the

moth (DBM) **Crop Protection Compendium, 2005**
Downy mildew **Edition. © CAB International, Wallingford,**
UK, 2005.

Early blight

Fruit flies

Fusarium wilt

wilt

Larger grain borer

Late blight

Leafmining flies

(leafminers)

[Mango seed weevil](#)

Mealybugs

Powdery mildew

Purple witchweed

Root-knot nematodes

Snails

(Giant East



Egg of mango seed weevil on mango fruit. The very small egg laying scars are barely discernible at harvest. When freshly laid the eggs are creamy-white. They are extremely small (0.8 mm long).

© The State of Queensland, Australia, Department of Primary Industries and Fisheries, 2007. Reproduced with permission; for further information, contact ipcu@dpi.qld.gov.au.

Adults of the mango seed weevil (*Sternochetus mangiferae*) have a compact body, they are about 7 to 9 mm long.

**African
Snail)
Spider mites
Spotted
stemborer
Storage
pests
Sweet
potato
weevil
Termites
Thrips
Tomato
Yellow Leaf
Curl Virus
Disease
(TYLCV)
Turnip**



© Georg Goergen/IITA Insect Museum, Cotonou, Benin. Reproduced from the Crop Protection Compendium, 2005 Edition. © CAB International, Wallingford, UK, 2005.

Mar 24, 2010 - [Disclaimer](#)

Search

[Publications](#) [About us](#) [FAQ](#) [TOF](#)



[Home](#) [Help](#) [Contact](#)

You are here: [Home](#) > [Plant Health](#) > [Pests/ diseases/ weeds](#)

[Back](#)

[Print](#)

**Crops/ fruits/
vegetables**

Images

[Pests/
diseases/
weeds](#)

**African
armyworm**

**African
bollworm**

[African
cassava
mosaic virus
\(ACMV\)](#)

**African
maize
stalkborer**

Anthracnose

Aphids

**Bacterial
wilt**

**Bagrada
bug**

**Banana
weevil**



African Cassava Mosaic Disease (ACMD).
The leaves of this local cultivar of cassava are expressing severe ACMD symptoms.

© International Society for Plant Pathology, www.isppweb.org

African mosaic virus on cassava - transmitted by whiteflies (*Bemisia tabaci*)

- Black rot**
- Cabbage looper**
- Cabbage moth**
- Cabbage webworm**
- Couch grass**
- Cowpea seed beetle**
- Cutworms**
- Damping-off disease**



© ETHZ

Mar 24, 2010 - [Disclaimer](#)

Search

[Publications](#) [About us](#) [TOF](#)



[Home](#) [Help](#) [Contact](#)

You are here: [Home](#) > [Plant Health](#) > [Pests/ diseases/ weeds](#)

[← Back](#)

[Print](#)

**Crops/ fruits/
vegetables**

Images

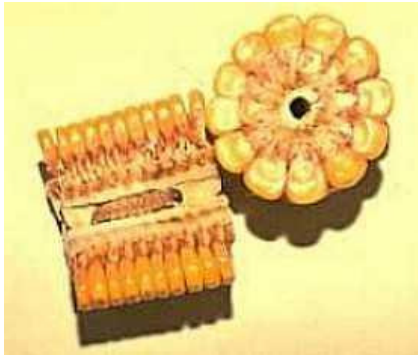
[Pests/
diseases/
weeds](#)

Caterpillars of the African maize stalkborer (*Busseola fusca*).

- African armyworm**
- African bollworm**
- African cassava mosaic virus (ACMV)**
- African maize stalkborer**
- Anthraxnose**
- Aphids**
- Bacterial wilt**
- Bagrada bug**
- Banana weevil**
- Black rot**
- Cabbage looper**
- Cabbage moth**



© D. Cugala, Stemborer team, icipe



Caterpillar of the African maize stalkborer and damage to maize cob.

© David C. Nowell Courtesy of Ecoport

Cabbage (www.ecoport.org).

webworm

Couch grass

Cowpea

seed beetle

Cutworms

**Damping-off
diseases**

**Diamondback
moth (DBM)**

**Downy
mildew**

Early blight

Fruit flies

**Fusarium
wilt**

**Larger grain
borer**

Late blight

**Leafmining
flies**

(leafminers)

**Mango seed
weevil**



Moth of the African maize stalkborer
(*Busseola fusca*).

© Stemborer team, icipe

Stemborer damage to a maize plant.

Mealybugs
Powdery mildew
Purple witchweed
Root-knot nematodes
Snails (Giant East African Snail)
Spider mites
Spotted stemborer
Storage pests
Sweet potato weevil
Termites
Thrips
Tomato Yellow Leaf Curl Virus



© Stemborer team, icipe

Stemborer damage to maize cob.

**Disease
(TYLCV)
Turnip
Mosaic
Virus
(TuMV)
Weeds
Whiteflies**

**Medicinal
plants**

**Fruit and
vegetable
processing**

**Natural pest
control**

**Cultural
practices**



© Stemborer team, icipe



African maize stalkborer eggs.

© **Agricultural Research
Council of South Africa.
Courtesy of Ecoport
(www.ecoport.org).**



**Eggs of the African maize stalkborer
(*Busseola fusca*).**

© **Stemborer team, icipe**

**Female moth of African maize stalkborer
(*Busseola fusca*) . Wingspan is about 2.5
to 3.5 with females and larger males.**



© B. Le Ru, icipe



Male moth of African maize stalkborer (*Busseola fusca*) .

Mar 24, 2010 - [Disclaimer](#) **Search**[Publications](#) [About us](#) [TOF](#)[Home](#) [Help](#) [Contact](#)You are here: [Home](#) > [Plant Health](#) > [Pests/ diseases/ weeds](#)[← Back](#)[Print](#) Crops/ fruits/
vegetables

Images

[Pests/
diseases/
weeds](#)[African
armyworm](#)
[African
bollworm](#)
[African
cassava
mosaic virus
\(ACMV\)](#)
[African
maize](#)

© F. Haas, icipe

The adult bagrada bug (*Bagrada hilaris*) is typically shield-shaped, 5-7mm long and 3-4mm wide. The upper surface has a mixture of black, white and orange markings.

Late instar nymph of the bagrada bug.

- stalkborer
- Anthracnose
- Aphids
- Bacterial wilt
- [Bagrada bug](#)
- Banana weevil
- Black rot
- Cabbage looper
- Cabbage moth
- Cabbage webworm
- Couch grass
- Cowpea seed beetle
- Cutworms
- Damping-off diseases
- Diamondback moth (DBM)



© F. Haas, icipe

Third instar nymph of the bagrada bug.

- Downy mildew**
- Early blight**
- Fruit flies**
- Fusarium wilt**
- Larger grain borer**
- Late blight**
- Leafmining flies (leafminers)**
- Mango seed weevil**
- Mealybugs**
- Powdery mildew**
- Purple witchweed**
- Root-knot nematodes**
- Snails (Giant East African)**



© F. Haas, icipe

Newly emerged nymphs (first instar) of the bagrada bug.

Snail)
Spider mites
Spotted stemborer
Storage pests
Sweet potato weevil
Termites
Thrips
Tomato Yellow Leaf Curl Virus (TYLCV)
Turnip Mosaic Virus (TuMV)
Weeds
Whiteflies
Medicinal plants



© F. Haas, icipe

Eggs of the bagrada bug (much enlarged)

17/10/2011

www.infonet-biovision.org 201003...

**Fruit and
vegetable
processing**

**Natural pest
control**

**Cultural
practices**



© F. Haas, icipe

**Initial symptoms of damage by bagrada bugs .
Note small white punctures on the edges of
leaves.**



© A. M. Varela, icipe

Kale plant severely damaged by bagrada bugs



© B. Loehr, icipe



Kale plant severely damaged by bagrada bugs

© B. Loehr, icipe



Kale plants killed by attack by bagrada bugs

© B. Loehr, icipe

Mar 24, 2010 - [Disclaimer](#)

Search

[Publications](#) [About us](#) [FAQ](#) [TOF](#)



[Home](#) [Help](#) [Contact](#)

You are here: [Home](#) > [Plant Health](#) > [Pests/ diseases/ weeds](#)

[Back](#)

**Crops/ fruits/
vegetables**

Images

[Print](#)

[Pests/](#)
[diseases/](#)
[weeds](#)

- African armyworm**
- African bollworm**
- African cassava mosaic virus (ACMV)**
- African maize stalkborer**
- Anthracnose**
- Aphids**
- Bacterial wilt**
- Bagrada bug**
- Banana weevil**
- Black rot**
- Cabbage**



Severe Turnip Mosaic Virus symptoms (mosaic and distortion) on cabbage leaves (*Brassica oleracea*)

© Image supplied by Warwick HRI, University of Warwick.



Turnip Mosaic Virus

© David B. Langston, University of

**looper
Cabbage
moth**

Georgia, Bugwood.org

Mar 24, 2010 - [Disclaimer](#)

Search

[Publications](#) [About us](#) [TOF](#)



[Home](#) [Help](#) [Contact](#)

You are here: [Home](#) > [Plant Health](#) > [Pests/ diseases/ weeds](#)

[← Back](#)

[Print](#)

**Crops/ fruits/
vegetables**

Images

[Pests/
diseases/
weeds](#)

- African
armyworm**
- African
bollworm**
- African
cassava
mosaic virus
(ACMV)**
- African
maize**



Bacterial black rot on cabbage

© G. Gichini, icipe

- stalkborer
- Anthracnose
- Aphids
- Bacterial wilt
- Bagrada bug
- Banana weevil
- [Black rot](#)
- Cabbage looper
- Cabbage moth
- Cabbage webworm
- Couch grass
- Cowpea seed beetle
- Cutworms
- Damping-off diseases
- Diamondback moth (DBM)



Bacterial black rot on cabbage

© A.M. Varela, icipe



Black rot on cabbage. Characteristic yellowish V-shaped areas at the leaf margin, sites of infection by black rot, *Xanthomonas campestris* pv. *campestris*.

Downy mildew

© Laing M.D. Courtesy of EcoPort (www.ecoport.org)

Early blight

Fruit flies

Fusarium wilt

Larger grain borer

Late blight

Leafmining flies

(leafminers)

Mango seed weevil

Mealybugs

Powdery mildew

Purple witchweed

Root-knot nematodes

Snails (Giant East African

African



Black rot on cabbage. Black rot leaf internal symptom. Note blackening of veins

© A.A. Seif, icipe

Bacterial black rot. Note blackening of water-conducting tissues of the stem

- Snail)**
- Spider mites**
- Spotted stemborer**
- Storage pests**
- Sweet potato weevil**
- Termites**
- Thrips**
- Tomato Yellow Leaf Curl Virus (TYLCV)**
- Turnip Mosaic Virus (TuMV)**
- Weeds**
- Whiteflies**
- Medicinal plants**



© A. M. Varela, icipe



© A. M. Varela, icipe

Bacterial black rot on kales

Bacterial black rot on cabbage

17/10/2011

www.infonet-biovision.org 201003...

**Fruit and
vegetable
processing**

**Natural pest
control**

**Cultural
practices**



© A.A. Seif, icipe

**Bacterial soft rot. Note slimy rot (whitish)
of the centre of the cabbage head**



© A. M. Varela, icipe

Mar 24, 2010 - [Disclaimer](#)

[Search](#)

[Publications](#) [Publications](#) [TC](#) [TOF](#)



[Home](#) [Help](#) [Contact](#)

You are here: [Home](#) > [Plant Health](#) > [Pests/ diseases/ weeds](#)

[← Back](#)

Crops/ fruits/

[Print](#) 

vegetables

Images

[Pests/](#)
[diseases/](#)
[weeds](#)

African
armyworm
African
bollworm
African
cassava
mosaic virus
(ACMV)
African
maize
stalkborer
Anthracnose
Aphids
Bacterial
wilt
Bagrada
bug
Banana
weevil
Black rot



Cabbage webworm caterpillar (*Hellula undalis*), about 1.5cm long, and damage on kale leaf.

© A.M. Varela, icipe

First instar caterpillars of the cabbage webworm feeding in a leaf of kale.

**Cabbage
looper
Cabbage
moth**

**Cabbage
webworm**

**Couch grass
Cowpea
seed beetle
Cutworms
Damping-off
diseases**



© A. M. Varela, icipe

**Diamondback
moth (DBM)
Downy
mildew
Early blight
Fruit flies
Fusarium
wilt
Larger grain
borer
Late blight
Leafmining**



© A.M. Varela, icipe

**Caterpillar of the cabbage webworm
(*Hellula undalis*) feeding in the stem of a
kale plant. Caterpillars attain a length of
1.5 cm when fully grown.**

flies
(leafminers)
Mango seed
weevil
Mealybugs
Powdery
mildew
Purple
witchweed
Root-knot
nematodes
Snails
(Giant East
African
Snail)
Spider mites
Spotted
stemborer
Storage
pests
Sweet
potato
weevil
Termites



© A.M. Varela, icipe

Cabbage webworm (*Hellula undalis*)
feeding on a cabbage head. The
caterpillars have dark brown or black
heads. The body is creamy white with
light pinkish-brown longitudinal stripes,
attaining a length of 1.2-1.5 cm when fully
grown.

Moth of the cabbage webworm - Adults
are greyish-brown with pale dusky
hindwings. Wings ca 1.2cm long in males,
1.4 cm in females.

Thrips
Tomato
Yellow Leaf
Curl Virus
Disease
(TYLCV)
Turnip
Mosaic
Virus
(TuMV)
Weeds
Whiteflies



© A.M. Varela, icipe

Medicinal
plants
Fruit and
vegetable
processing
Natural pest
control
Cultural
practices



Cabbage webworm adults are greyish-brown with pale dusky hindwings; each forewing has a prominent black spot and zigzagging, light brown lines, central band between lines sometimes filled with darker brown scales. Wings ca 1.2 cm long in males, 1.4 cm in females.

© David Agassiz. Reproduced from the Crop Protection Compendium, 2005

**Edition. © CAB International, Wallingford,
UK, 2005.**



**Damage by the cabbage webworm as stem borer on
a kale plant**

© A. M. Varela, icipe

**Damage to the growing tip of a kale plant
caused by the cabbage webworm**



© A. M. Varela, icipe

Mar 24, 2010 - [Disclaimer](#)

Search

[Publications](#) [About us](#) [TOF](#)



[Home](#) [Help](#) [Contact](#)

You are here: [Home](#) > [Plant Health](#) > [Pests/ diseases/ weeds](#)

[← Back](#)

**Crops/ fruits/
vegetables**

Images

[Pests/](#)
[diseases/](#)
[weeds](#)

**African
armyworm
African
bollworm
African
cassava
mosaic virus
(ACMV)
African
maize
stalkborer
Anthracnose
Aphids
Bacterial
wilt
Bagrada
bug
Banana**



Downy mildew on cabbage

© A.M. Varela, icipe

**Downy mildew (*Peronospora parasitica*)
on Brassica oleracea**

weevil
Black rot
Cabbage
looper
Cabbage
moth
Cabbage
webworm
Couch grass
Cowpea
seed beetle
Cutworms
Damping-off
diseases
Diamondback
moth (DBM)
[Downy](#)
[mildew](#)
Early blight
Fruit flies
Fusarium
wilt
Larger grain
borer



© Clemson University - USDA Cooperative
Extension Slide Series
(www.insectimages.org)

Downy mildew (*Pseudoperonospora cubensis*) on cucumber. Severe defoliation of cucumber caused by infection from downy mildew. Fruits are not infected, but those that form are small and do not ripen properly.

Late blight
Leafmining
flies
(leafminers)
Mango seed
weevil
Mealybugs
Powdery
mildew
Purple
witchweed
Root-knot
nematodes
Snails
(Giant East
African
Snail)
Spider mites
Spotted
stemborer



© Denis Persley and Tony
Cooke, Department of
Primary Industries and
Fisheries, Queensland,
Australia. Courtesy of
EcoPort (www.ecoport.org)

Mar 24, 2010 - [Disclaimer](#)

[Search](#)

[Publications](#) [About us](#) [FAQ](#) [TOF](#)



[Home](#) [Help](#) [Contact](#)

You are here: [Home](#) > [Plant Health](#) > [Pests/ diseases/ weeds](#)

[← Back](#)

[Print](#) 

**Crops/ fruits/
vegetables**

Images

[Pests/
diseases/
weeds](#)

**African
armyworm
African
bollworm
African
cassava
mosaic virus
(ACMV)
African
maize
stalkborer
Anthracnose
Aphids
Bacterial
wilt
Bagrada
bug**



© A.M. Varela, icipe

Cabbage looper on cabbage - The first instar is white and almost clear with a black head capsule. Later instars are green with a thin white line on each side. Mature larvae reach 3 to 4 cm in length.

Young cabbage looper feeding on a kale leaf. Mature caterpillar reach 3 to 4 cm in length.

- Banana weevil**
- Black rot**
- [Cabbage looper](#)**
- Cabbage moth**
- Cabbage webworm**
- Couch grass**
- Cowpea seed beetle**
- Cutworms**
- Damping-off diseases**
- Diamondback moth (DBM)**
- Downy mildew**
- Early blight**
- Fruit flies**
- Fusarium wilt**
- Larger grain**



© A. M. Varela, icipe



Cabbage looper caterpillar (approximately 2cm long). Mature caterpillar reach 3 to 4 cm in length.

borer
Late blight
Leafmining
flies
(leafminers)
Mango seed
weevil
Mealybugs
Powdery
mildew
Purple
witchweed
Root-knot
nematodes
Snails
(Giant East
African
Snail)
Spider mites
Spotted
stemborer
Storage
pests
Sweet

© Alton N. Sparks, Jr., The University of Georgia, www.insectimages.org. Courtesy of Ecoport (www.ecoport.org)



Pupa of the cabbage looper. During its last larval stage the caterpillar spins a cocoon.

© A. M. Varela, icipe

Cabbage looper adult. The adult is ca 2.5 cm in length and mottled, grayish-brown. The wingspan is ca. 4 cm.

17/10/2011

www.infonet-biovision.org 201003...

**potato
weevil
Termites
Thrips
Tomato
Yellow Leaf
Curl Virus
Disease
(TYLCV)
Turnip
Mosaic
Virus
(TuMV)
Weeds
Whiteflies
Medicinal
plants
Fruit and
vegetable
processing
Natural pest
control
Cultural**



© Joseph Berger, www.insectimages.org.
Courtesy of EcoPort (www.ecoport.org)



© A. M. Varela, icipe

**Moth of the cabbage looper. Real size: ca
2.5 cm in length, wingspan is ca. 4 cm**

Damage by cabbage looper on cabbage



© A.M. Varela, icipe

Mar 24, 2010 - [Disclaimer](#)

Search

[Publications](#) [About us](#) [TC](#) [TOF](#)



[Home](#) [Help](#) [Contact](#)

You are here: [Home](#) > [Plant Health](#) > [Pests/ diseases/ weeds](#)

◀ [Back](#)

**Crops/ fruits/
vegetables**

Images

[Pests/](#)
[diseases/](#)
[weeds](#)

**African
armyworm
African
bollworm
African
cassava
mosaic virus
(ACMV)
African
maize
stalkborer
Anthracnose
Aphids
Bacterial
wilt
Bagrada
bug
Banana**



Cabbage moth larva: When fully grown (1.5 to 2 cm long), larvae move to pupate in the soil. The pupal stage lasts about 10 days.

© Ooi P. Courtesy of EcoPort
(www.ecoport.org)

Eggs of cabbage moth are laid in clusters and held together by a gelatinous glue.

weevil
Black rot
Cabbage
looper
Cabbage
moth
Cabbage
webworm
Couch grass
Cowpea
seed beetle
Cutworms



© Ooi P. Courtesy of EcoPort
(www.ecoport.org)

Damping-off
diseases
Diamondback
moth (DBM)
Downy
mildew
Early blight
Fruit flies
Fusarium
wilt
Larger grain
borer



© Ooi P. Courtesy of EcoPort
(www.ecoport.org)

Cabbage moth larvae: Upon hatching, larvae feed together on leaves and complete 5 instars in about 12 days.

Late blight
Leafmining
flies
(leafminers)
Mango seed
weevil
Mealybugs
Powdery
mildew
Purple
witchweed
Root-knot
nematodes
Snails
(Giant East
African
Snail)
Spider mites
Spotted
stemborer
Storage
pests
Sweet
potato



© A.M. Varela, icipe

Caterpillars of the cabbage moth
(*Crocidolomia binotalis*) feeding on
cabbage. Fully grown larvae are 1.5 to 2
cm long.

The cabbage moth (*Crocidolomia*
binotalis). Cabbage moth adults emerge
during the night. Wingspans are 2 to 2.5
cm.

weevil
Termites
Thrips
Tomato
Yellow Leaf
Curl Virus
Disease
(TYLCV)
Turnip
Mosaic
Virus
(TuMV)
Weeds
Whiteflies
Medicinal
plants
Fruit and
vegetable
processing
Natural pest
control
Cultural
practices



© A. M. Varela, icipe

Cabbage plant damaged by caterpillars of the cabbage moth



© A.M. Varela, icipe

Mar 24, 2010 - [Disclaimer](#)

[Search](#)

[Publications](#) [About us](#) [TC](#) [TOF](#)



[Home](#) [Help](#) [Contact](#)

You are here: [Home](#) > [Plant Health](#) > [Pests/ diseases/ weeds](#)

[← Back](#)

[Print](#) 

**Crops/ fruits/
vegetables**

Images

[Pests/
diseases/
weeds](#)

**African
armyworm
African
bollworm
African
cassava
mosaic virus
(ACMV)
African
maize
stalkborer
Anthracnose
Aphids
Bacterial
wilt
Bagrada
bug**



© Roger P. Ellis. Courtesy of Ecoport
(www.ecoport.org)

The Giant African Snail (*Achatina fulica*).
Adults of the species may exceed 20 cm
in shell length but generally average
about 5 to 10cm

The Giant African Snail (*Achatina fulica*).
Adults of the species may exceed 20 cm
in shell length but generally average
about 5 to 10cm

17/10/2011

www.infonet-biovision.org 201003...

Banana weevil
Black rot
Cabbage looper
Cabbage moth
Cabbage webworm
Couch grass



Cowpea seed beetle
Cutworms
Damping-off diseases
Diamondback moth (DBM)
Downy mildew
Early blight
Fruit flies
Fusarium wilt
Larger grain

© Yuri Yashin. Courtesy of Ecoport
(www.ecoport.org)



The Giant African Snail (*Achatina fulica*) damage on banana plant

© FAO. Courtesy of Ecoport

- borer**
- Late blight**
- Leafmining flies (leafminers)**
- Mango seed weevil**
- Mealybugs**
- Powdery mildew**
- Purple witchweed**
- Root-knot nematodes**

(www.ecoport.org)



The Giant African Snail (*Achatina fulica*).
 Adults of the species may exceed 20 cm in shell length but generally average about 5 to 10cm

© David G. Robinson. Courtesy of Ecoport (www.ecoport.org)

[Snails](#)
[Giant Snail](#)

Mar 24, 2010 - [Disclaimer](#)

[Search](#)

[Publications](#) [About us](#) [TC](#) [TOF](#)



[Home](#) [Help](#) [Contact](#)

You are here: [Home](#) > [Plant Health](#) > [Pests/ diseases/ weeds](#)

[Back](#)

[Crops/ fruits/ vegetables](#) [Images](#)

[Print](#)

[Pests/](#)
[diseases/](#)
[weeds](#)

**African
armyworm
African
bollworm
African
cassava
mosaic virus
(ACMV)
African
maize
stalkborer
Anthracnose
Aphids
Bacterial
wilt
Bagrada
bug
Banana
weevil
Black rot
Cabbage**



Termites (*Coptotermes formosanus*)

© Scott Bauer, USDA Agricultural
Research Service, Bugwood.org

Termite *Macrotermes jeanneli* mound at Marigat, Kenya.

- looper**
- Cabbage**
- moth**
- Cabbage**
- webworm**
- Couch grass**
- Cowpea**
- seed beetle**
- Cutworms**
- Damping-off**
- diseases**
- Diamondback**
- moth (DBM)**
- Downy**
- mildew**
- Early blight**
- Fruit flies**
- Fusarium**
- wilt**
- Larger grain**
- borer**
- Late blight**
- Leafmining**
- flies**



© Zipporah Osiemo

Termites and fungi in Kenya

- (leafminers)
- Mango seed weevil
- Mealybugs
- Powdery mildew
- Purple witchweed
- Root-knot nematodes
- Snails (Giant East African Snail)
- Spider mites
- Spotted stemborer
- Storage pests
- Sweet potato weevil
- [Termites](#)
- Thrips



© Zipporah Osiemo

Termite *Coptotermes* spp.

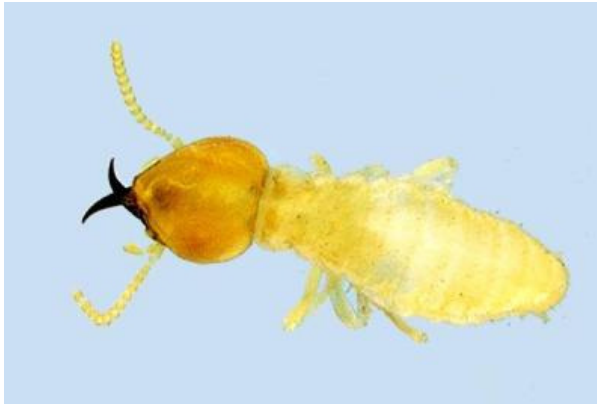
**Tomato
Yellow Leaf
Curl Virus
Disease
(TYLCV)
Turnip
Mosaic
Virus
(TuMV)
Weeds
Whiteflies**

**Medicinal
plants**

**Fruit and
vegetable
processing**

**Natural pest
control**

**Cultural
practices**



© Georg Goergen/IITA Insect Museum, Cotonou, Benin. Reproduced from the Crop Protection Compendium, 2005 Edition. © CAB International Publishing. Wallingford, UK.

Close-up termites on mango stem



© A. M. Varela, *icipe*

Harvester termites taking plant material into the nest.



© B. Loehr, icipe

Mar 24, 2010 - Disclaimer