



Creating Learning Networks for African Teachers

UNESCO PROJECT (Contract No. 408.302.9)

[Home](#) | [Computer Literacy](#) | [Common Applications](#) | [Pedagogy & Internet](#) | [Infrastructure Guide](#)

Background

COMMON APPLICATIONS

Presentation Software Tutorial

[Introduction](#)

[Background](#)

[Text](#)

[Slides](#)

[Graphics](#)

[Animations &](#)

SCANNING AN IMAGE

A scanner is a hardware device that can catch images and translate them into a digital form that a computer can display, edit, store and output. The image may be a photo, pages of characters, graphics and illustrations, or even coins or textile products in three dimensions.

Therefore, scanner is able:

- To scan characters into bit identifying software for processing, thereby avoiding the trouble of typing.
- To add graphics or photos in the document.
- To add image in multimedia.

Timings

Examples

[Mitosis](#)

[Digestive](#)

[System](#)

[Matrices](#)

[Simple Cell](#)

[Lightening](#)

[Conductor](#)

[Discharging](#)

[Tube](#)

[Human Eye](#)

[Telecollaboration](#)

Links

Spreadsheets

Tutorial

[Introduction](#)

[Worksheets](#)

- To produce artistic documents.

If you have a basic understanding of what a scanner can do, you may now improve your working quality and efficiency.

Objectives

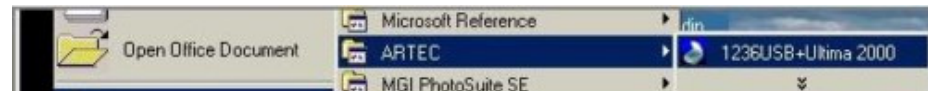
To be able to transform an image form a hard copy into an electronic copy.

Rationale

It is important for an art student to learn how to transform an image from a magazine, book, or a drawn/ painted 2-D Art.

Activity 1

1. Place your work to be scanned in the scanner.
2. From the **Start menu**, choose **Programs, ARTEC, 1236USB** and click.



[Columns & Rows](#)
[Charts](#)

Examples

[Refraction of Light](#)

[Solving](#)

[Polynomial](#)

[Equations](#)

[Workers'](#)

[Database](#)

[Base Converter](#)

[Activities](#)

[Links](#)

Databases

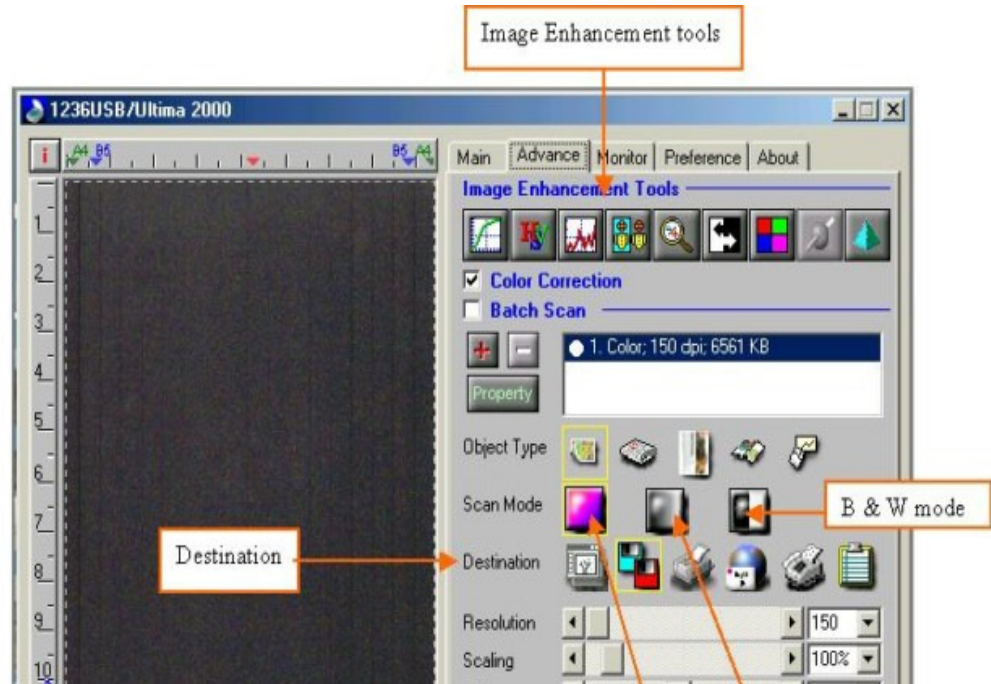
Tutorial

[Introduction](#)

Example



This opens the Scanner window, making it ready for you to use it.



Example

[Periodic Table](#)

[Links](#)

Word Processing Tutorial

[Introduction](#)
[Text](#)

[Page Properties](#)

[Printing](#)

[Quit](#)

Examples

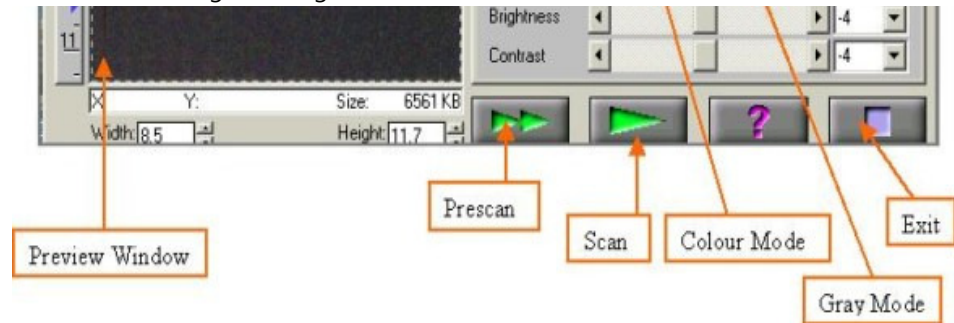
[Address list](#)

[Time table](#)

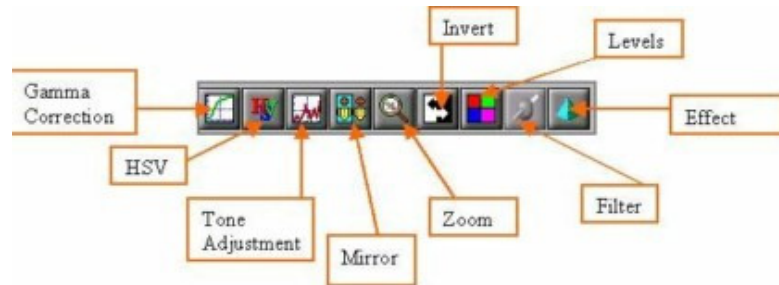
[Newsletter](#)

[Repeat Patterns](#)

[Logos](#)



Enhancement Tools :



Gamma Correction:

Adjusts the brightness of midtones of the scanned image while keeping shadow and highlight areas relatively unchanged. The

[Practical Questions](#)

HTML Editors Tutorial

[Basic html](#)

[Netscape Composer](#)

Examples

[Teaching](#)

[Syllabus](#)

[Teachers' Notes](#)

[Subject Website](#)

[Lists](#)

[Students](#)

[Website](#)

Art

[Principles of Art](#)

Gamma correction function allows you to increase or decrease the intensity of the middle gray tones.

HSV: (Hue & Saturation)

Allows you to adjust the hue and saturation of its pixels in an image while keeping the brightness level unchanged.

Tone Adjustment:

Allows you control the conjunction between the shadows, midtones, and highlights of your image. Use it to restore detail that is lost in shadows or highlights, to correct over or under-exposure, and to improve the tonal quality of your image.

Mirror:

The mirror function lets you change the horizontal orientation of a prescan image to one that mirrors the current orientation of the image view across a vertical imaginary line.

Zoom:

The Zoom function lets you enlarge the view of an image in the Preview window. However, the zoom function can only enlarge the image view with one predefined factor.

[Elements of Art](#)
[Coloured Pencil](#)
[Paintings](#)
[Pastel Paintings](#)
[Book cover](#)
[Posters](#)

[Scanning an image](#)

Invert:

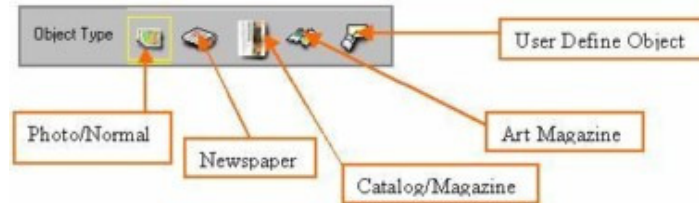
The Invert function enables you to make a positive view of a scanned image negative or to make a negative image positive. By applying this function, the brightness value of each pixel will change to an inverse value on 256-color scale.

Filter:

Filters are provided to produce dropout effects, i.e., to drop the part of the image that is in a color difference from the specified filter. Three options are available: Red, Green, and Blue filter.

Effect:

Offers the ability to create special and spectacular effects to your scanned image and let you get some amazing results. There are five functions in this menu: None, Blur, Blur More, Sharpen, and Sharpen More. All these functions are exclusive to each other. The default effect selection is None.



Normal: You need not select this icon if your document is photo or better quality image.

Newspaper: For newspaper document selection.

Catalog / Magazine: For catalog or magazine document selection.

Art Magazine: For art magazine document selection.

User Define Object: Select this icon and a dialog box will appear. You can either enter the desired value in the number box or use the scroll bar.

3. Click on the **Prescan** button to perform a prompt low-resolution scan. The prescan image will be displayed in the **Preview** window.

[Presentation Software](#) | [Spreadsheets](#) | [Databases](#) | [Word Processing](#)
| [HTML Editors](#)
[Computer Literacy](#) | [Common Applications](#) | [Pedagogy & Internet](#) |
[Infrastructure Guides](#) | [Home](#)