

**The next generation iSeries...
...simplicity in an on demand world –
- First Hundred Days Observations**

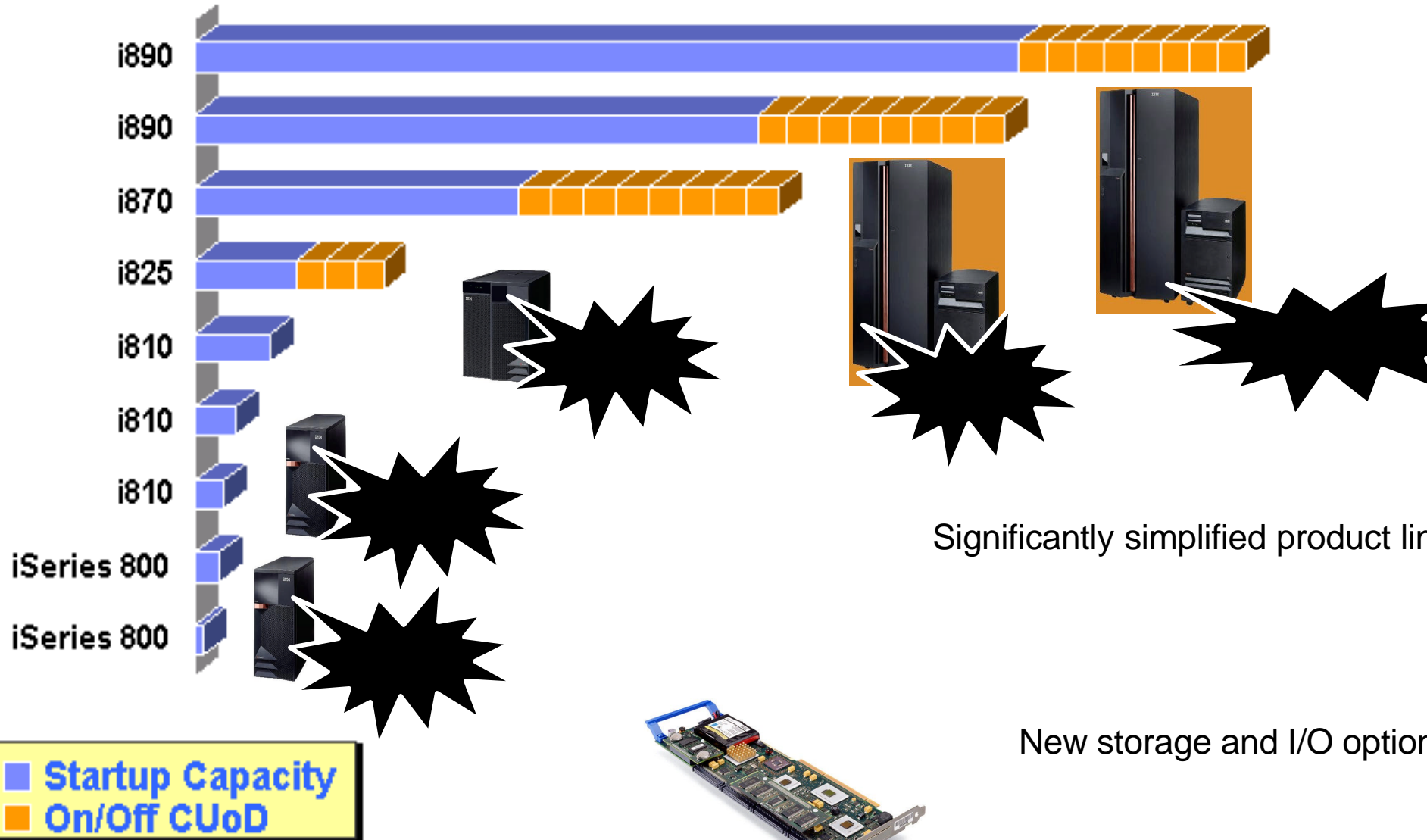
**Al Zollar
General Manager
IBM eServer iSeries**



First 100 Days



IBM eServer iSeries – New, Simplified Product Line



Getting the Word Out regarding our new products

IBM  server **iSeries**

iSERIES NATION

January 20th

January 22nd



January 26 - 30, 2003
Orlando, Florida USA

January 26th

January thru February

100+ Launch Events across the Americas

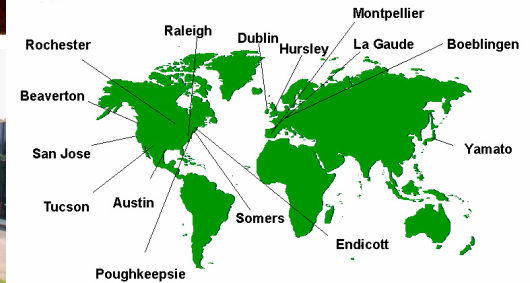


February 18th

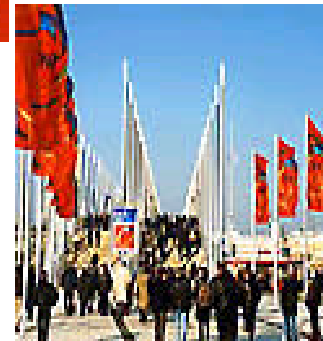
March 9th



Getting Around IBM



Traveling to industry events



Meeting iSeries Nation members



Working with partners inside & outside of IBM



WebSphere® software

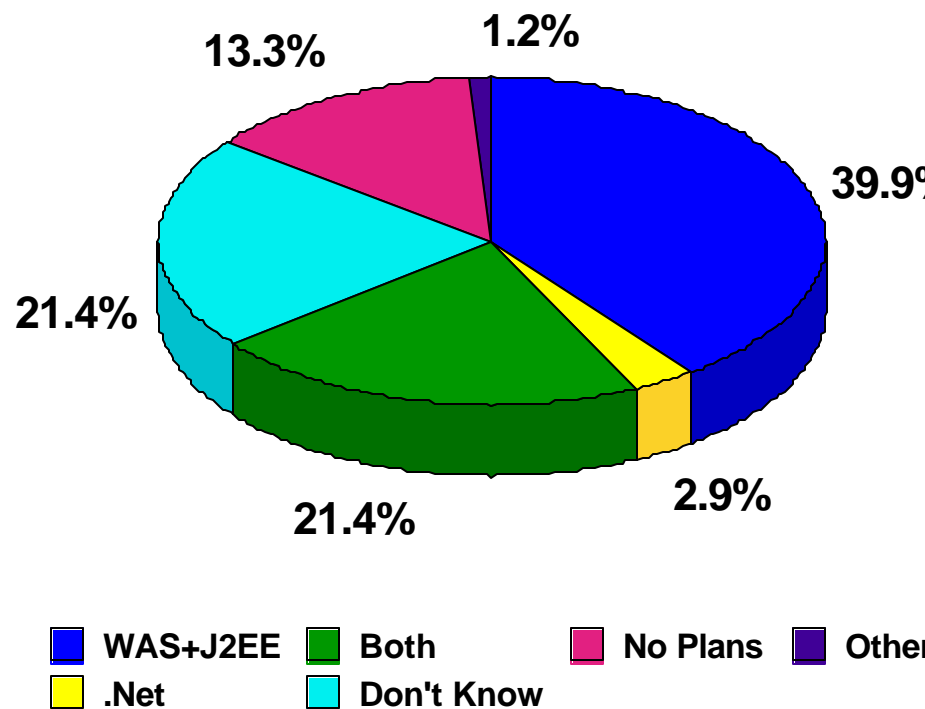
DB2® Data Management Software



SV Survey Results

- **40% of ISVs committed to WAS & J2EE**
- **21% of ISVs keeping option open by supporting both WAS & J2EE and .Net**
- **2.9% of ISVs committed to .Net**
- **Opportunity may exist to influence a significant (35%) number of ISVs**

ISV Framework Use



ISVs are supporting multiple frameworks

IBM eServer iSeries 2003 Priorities

- Growth
- Touch Every Customer
- Expand our ISV base

The next generation iSeries...



...simplicity in an on demand world

Trademarks and Disclaimers

IBM Corporation 1994-2003. All rights reserved.

References in this document to IBM products or services do not imply that IBM intends to make them available in every country. The following terms and trademarks or registered trademarks of International Business Machines Corporation in the United States, other countries, or both. This list is not a comprehensive list of all IBM trademarks.

400	ClusterProven	e business(logo)	IBM.COM	PowerPC	System/38
AIX	DataPropogator	e(logo) business	InfoPrint	PR/SM	ThinkPad
AIX/L (logo)	DB2	e-business (logo)	iSeries	pSeries	Tivoli
AIX 5L	DB2 Extenders	e-business Hosting	Magstar	Redbooks	VisualAge
Application System/400	DB2 OLAP Server	e-business on demand	MQSeries	SecureWay	WebSphere
AS/400	DB2 Universal Database	FlashCopy	Operating System/400	SmoothStart	X-Architecture
AS/400e	DRDA	IBM	OS/400	SQL/400	xSeries
Chipkill	e(logo)server	IBM (logo)	Parallel Sysplex	System/36	zSeries

Mail, Domino.Doc, Domino, Freelance Graphics, iNotes, LearningSpace, Lotus Notes, Lotus, Notes, QuickPlace, Sametime are trademarks owned by IBM-Lotus in the United States, other countries, or both.

is a trademark of Corollary, Inc. in the United States, other countries or both.

and all Java-based trademarks are trademarks of Sun Microsystems, Inc. in the United States, other countries, or both.

osoft, Windows, Windows NT, and the Windows logo are trademarks of Microsoft Corporation in the United States, other countries, or both.

onMedia, LANDesk, MMX, Pentium and ProShare are trademarks of Intel Corporation in the United States, other countries, or both.

X is a registered trademark of The Open Group in the United States and other countries.

and the SET Logo are trademarks owned by SET Secure Electronic Transaction LLC.

or company, product and service names may be trademarks or service marks of others.

Information is provided "AS IS" without warranty of any kind.

Customer examples described are presented as illustrations of how those customers have used IBM products and the results they may have achieved. Actual environmental costs and performance characteristics may vary by customer.

Information in this presentation concerning non-IBM products was obtained from a supplier of these products, published announcement material, or other publicly available sources and does not constitute an endorsement of such products by IBM. Sources for non-IBM list price and performance numbers are taken from publicly available information, including vendor announcements and vendor worldwide homepages. IBM has not tested these products and cannot confirm the accuracy of performance, capability, or any other claims related to non-IBM products. Questions on the capability of non-IBM products should be addressed to the supplier of those products.

Statements regarding IBM future direction and intent are subject to change or withdrawal without notice, and represent goals and objectives only. Contact your local IBM office or IBM authorized reseller for the full text of the specific Statement of Direction.

The information in this presentation addresses anticipated future capabilities. Such information is not intended as a definitive statement of a commitment to specific levels of performance, function or delivery schedules with respect to any future products. Such commitments are made in IBM product announcements. The information is presented here to communicate IBM's current investment and development activities as a good faith effort to help with our customers' future planning.

Performance is based on measurements and projections using standard IBM benchmarks in a controlled environment. The actual throughput or performance that any user will experience may vary depending upon considerations such as the amount of multiprogramming in the user's job stream, the I/O configuration, the storage configuration, and the workload processed. Therefore, no assurance can be given that an individual user will achieve throughput or performance improvements equivalent to the ratios stated here.

Diagrams shown are of engineering prototypes or representation of product functions. Changes may be incorporated in production models.