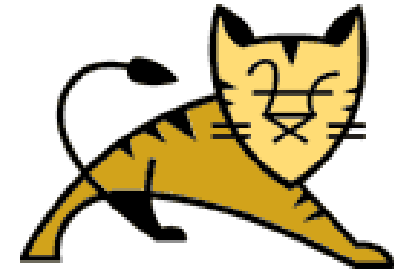


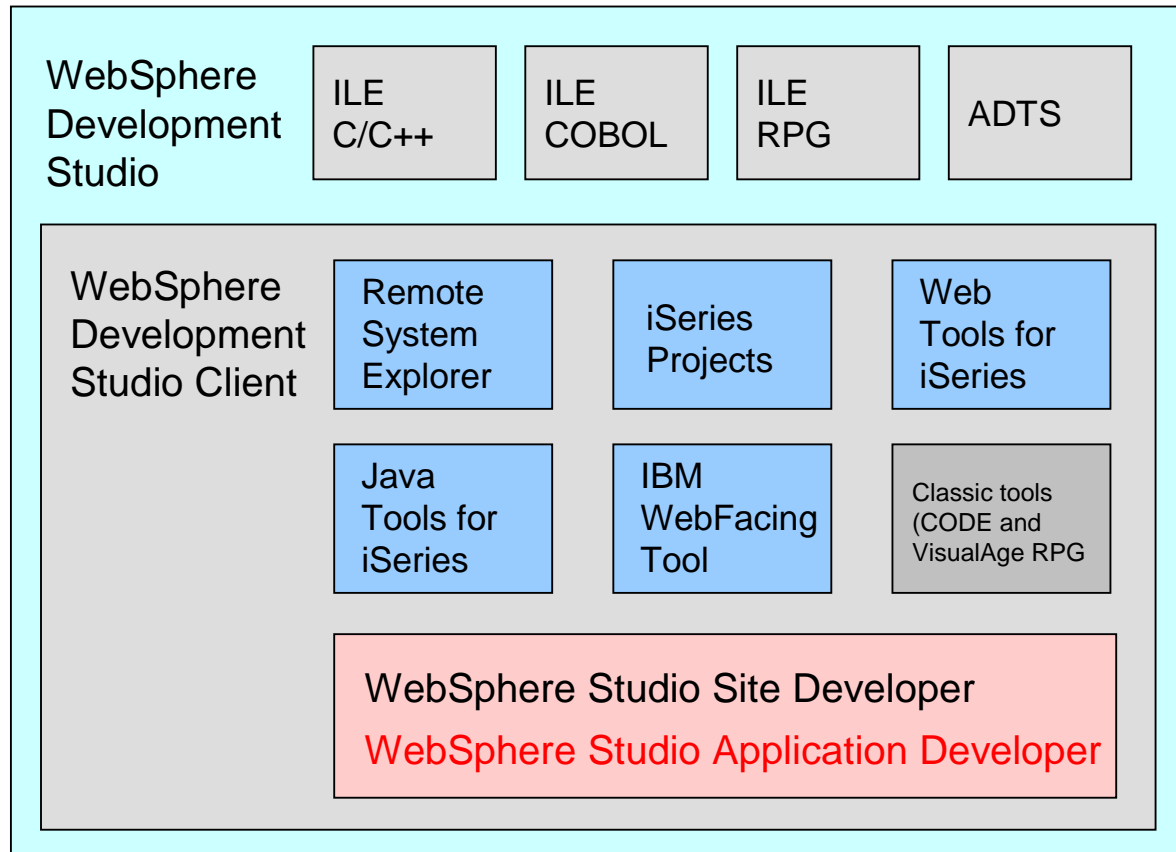
Jakarta Tomcat



- From Jakarta - a project of the Apache Software Foundation
- No cost engine for Servlets and Java Server Pages
 - Sun's official reference implementation
- V3.2.4 incorporated into HTTP server (via PTF)
- A "getting started" web application server
- **WebSphere Application Server = IBM's strategic web application server**
- Missing function compared with WebSphere AS:
 - No EJB or Web Services support
 - No Workload Management
 - No IBM Session Manager support
 - No IBM database connection manager support



WebSphere Development Studio Client for iSeries V5.0



5724-A81: WDSc V5.0

5724-D46: WDSc Advanced Edition V5.0

Planned Availability April 25, 2003

www.ibm.com/software/ad/wds400/

WDS*c* V5.0 Major Features

- WSSD/WSAD* V5 for e-business development
 - Java, EJB*, Web, Web Services, XML, database tools
 - Web Application builder based on Struts
 - iSeries-specific enhancements for Web, Web Services, Java development
 - iSeries extensions:
 - Enhanced IBM WebFacing Tool
 - iFrame portlet and sample*
 - Integrated file/project/edit/compile/debug for iSeries HLL and DDS
 - Seamless integration of IBM and iSeries partner tools
- Co-Operative Development Environment (CODE)
- VisualAge RPG
- Distributed Debugger
- 1 copy of WDS*c* is shipped with WAS-Express for iSeries

*Advanced Edition only

Eclipse based IDE

WebFacing - Development Studio Client

File Edit Perspective Project Window Help

WebFacing Projects

- carinq
- ordentry
- ordrev**
- CL Commands
- DDS
- <BSTKAST1>WFTEST/QDDSSRC(ORDREVD)
 - START
 - DETAIL
 - HEADER
 - HEADERData.java
 - HEADERFeedback.java
 - HEADERView.java
 - HEADER.jsp
 - HEADERJavaScript.jsp
 - BOTTOM

ordentry Log **ordrev Log X**

DSPF Conversion Log

DSPF
This section lists all display files that have been converted.

- ✓ ⚠ WFTEST/QDDSSRC(ORDREVD)
- ✓ ⚠ WFTEST/QDDSSRC(ORDENTD)
- ✓ ⚠ WFTEST/QDDSSRC(SLTCUSTD)
- ✓ ⚠ WFTEST/QDDSSRC(SLTPARTD)
- ✓ ⚠ WFTEST/QDDSSRC(CARINQDF)

Records
This section lists all the records converted display file.

- ✓ ⚠ START
- ✓ ✓ DETAIL
- ✓ ✓ HEADER
- ✓ ✓ BOTTOM

Errors
This section lists all errors for the selected object.

- All messages
- Compile messages only
- Conversion messages only

Message ID	Line	Severity	Message Text
DDX0040		Informational	Function key labels were detected and replaced

Overview | Referenced Keywords | DSPF Conversion Log | UIM Help Conversion Log

WebFacing Projects Navigator

Properties

Property	Value
01) Host	BSTKAST1
02) Userid	
03) Password	
04) Host Port	4004
05) Fixed Height	false
06) Administrator e-mail	admin@ibm.com

BENNEVIS

File Edit View Communication Actions Window Help

Parts Order Entry

Type choices, press Enter.
2=Change

Customer number _____ Order number :

Select Customer

Type choices, press Enter.
1=Select

Opt Customer

- = 0001 OAKLEY, Annie D
- 0002 BARBER, Elizabeth A
- 0003 Pork, Piggy B
- 0004 WILLIS, NEIL U
- 0005 Mullen-Schultz, Gary C

More...

Fkey12=Cancel

F3=Exit F4=Prompt F6=Accept Order F12=Cancel

MA a 14/036

1902 - Session successfully started

BENNEVIS

File Edit View Communication Actions Window Help

Parts Order Entry

Type choices, press Enter.
2=Change

Customer number 0003 Order number : 3773
 Customer name : Pork, Piggy B
 Address : 00003 Ave. SIX
 City

Opt Part	Description
- 000002	Blacksmith's
- 000006	Saw Bench

Select Part

Type choices, press Enter.
1=Select

Opt Part	Description	Qty
= 000026	Jig Saw	232
- 000027	Metronome	351
- 000028	Micrometer	153
- 000029	Thin nosed pliers	137
- 000030	Monkey Wrench	168
		More...

F12=Cancel

F3=Exit F4=Prompt F6=

MA a 16/031

3902 - Session successfully started

Order Entry Demo - Microsoft Internet Explorer

File Edit View Favorites Tools Help

Address <http://bennevis:11000/oaedemo/WFLogon?inv=d3545138&turnCacheOff=1044896545803> Go Links

Order Entry Demo

Parts Order Entry

Click on item to change

Customer number

Order number :

Enter

Cancel

HELP

Select Customer

Click on picture to select

Customer	
	OAKLEY, Annie O
	BARBER, Elizabeth A
	Pork, Piggy B
	WILLIS, NEIL U
	Mullen-Schultz, Gary C

[Fkey12=Cancel](#)

Done Local intranet

Order Entry Demo - Microsoft Internet Explorer

File Edit View Favorites Tools Help

Back Forward Stop Home Search Favorites Media Print Mail News RSS

Address http://bennevis:11000/loedemo/WFLogon?inv=d354513&turnCacheOff=1044898644164 Go Links

Order Entry Demo

Parts Order Entry

Click on item to change

Customer number 0003

Customer name Pork, Piggy B

Address 00003 Ave. SIX

City

Order number 3775

4567

Enter






Cancel

HELP

Part	Description	Qty
000002	Blacksmith's Anvil	1
000005	Saw Bench	2

Select Part

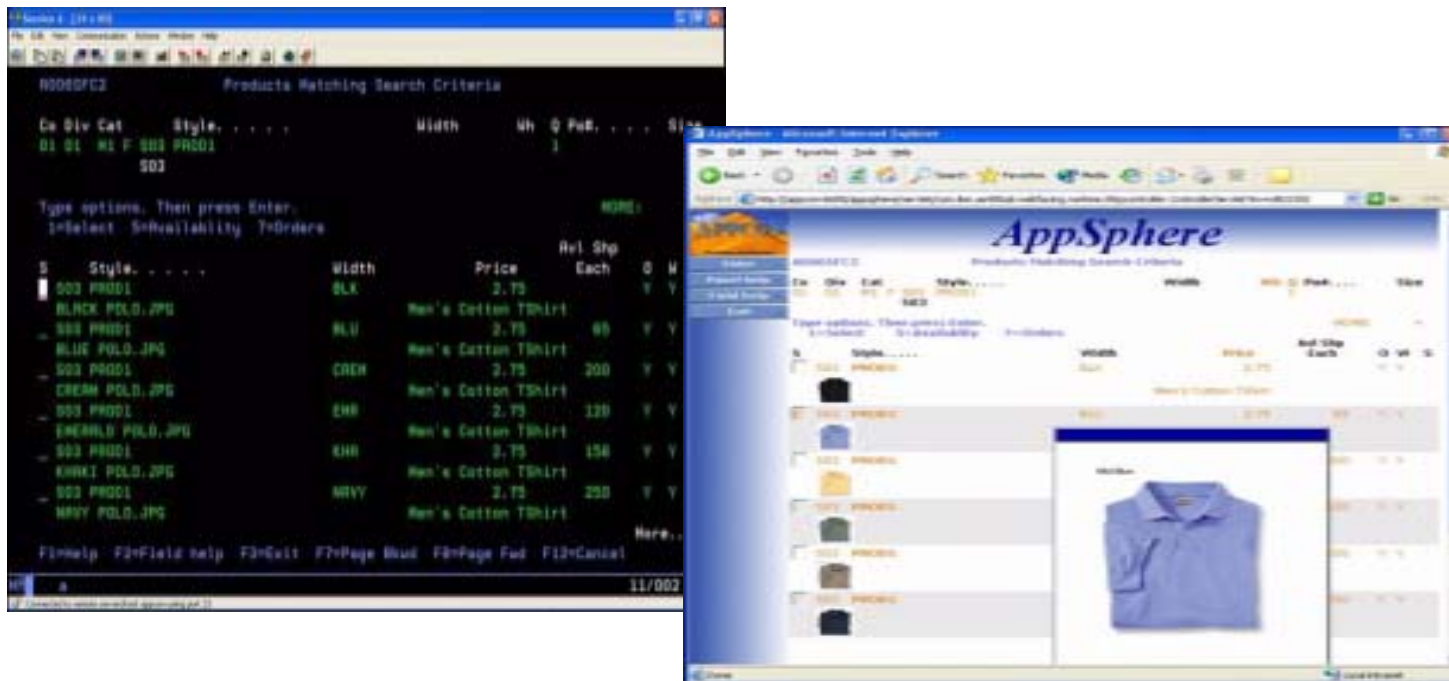
Click on part to select

Part	Description	Qty
	Jig Saw	232
	Metronome	351
	Micrometer	153
	Thin nosed pliers	137
	Monkey Wrench	168

WebFacing Modernizes iSeries 5250 Applications

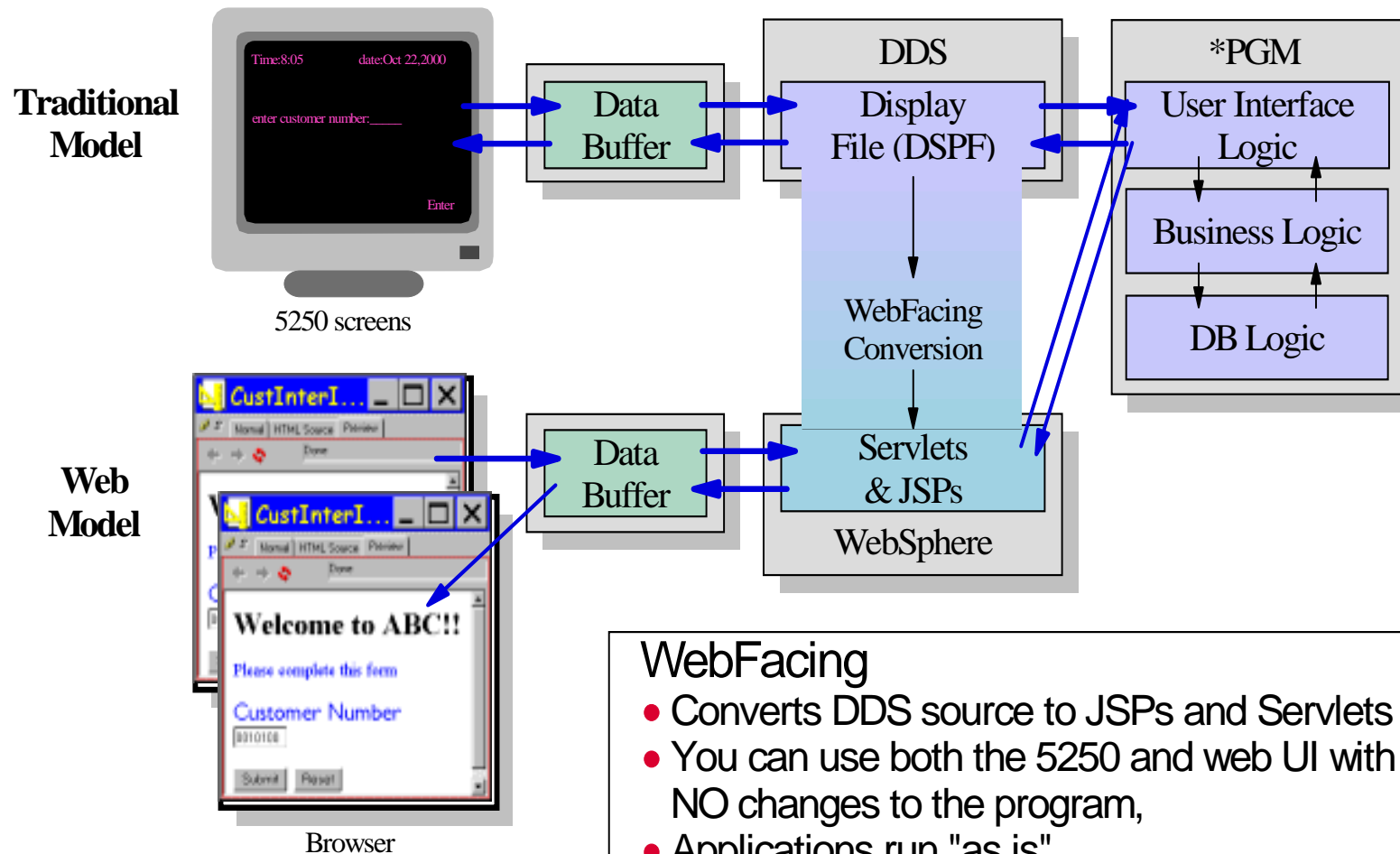
WebFacing Tool

- Part of WebSphere Development Studio for iSeries (shipped with WDS*c*)
- Supports 5250 and web interfaces
- Quickly convert RPG/5250 applications to Graphical User Interface (GUI)
- End-users access applications via browser
- **New 2003 iSeries models (only) do NOT require 5250 CPW workload!**



Before & After WebFacing

WebFacing Architecture



WebFacing

- Converts DDS source to JSPs and Servlets
- You can use both the 5250 and web UI with NO changes to the program,
- Applications run "as is".

Quickly web-enable many applications

WebFacing Tool + New Models = No Interactive CPW!

"New News" in 2003 Models & Packaging - WebSphere and WebFacing

- **Model 800**

- WebFacing does NOT require 5250 CPW workload
- Standard and Advanced editions includes WAS-Express
 - Value edition does NOT include WAS-Express

- **Model 810**

- WebFacing does NOT require 5250 CPW workload
- Standard package does NOT include WAS-Express
- Enterprise package includes WAS-Express

- **Models 825, 870 & 890**

- WebFacing does NOT require 5250 CPW workload
- Standard package does NOT include WAS
- Enterprise package includes CHOICE of WebSphere Application Server
 - WAS - Express for iSeries **OR**
 - WebSphere Application Server V4 (single server) **OR**
 - WebSphere Application Server V5

***ALL Older iSeries
Models Using
WebFacing Tool
Requires 5250 CPW***

iSeries Access Family (fee-based) Includes WebSphere-based Products



iSeries Access for the Web

- Administrator and end-user tool
- Access iSeries resources via browser
- Use iSeries Access for the Web with WebFacing to modernise system screens
- Administrator can customise/limit access to resources

The browser-based alternative...



WebSphere Host Publisher

- Programmer tool
- Modernise existing 5250 applications
- Combine multiple back-end applications
 - iSeries, zSeries, UNIX, etc
- Customise applications
 - Take 1,000 screens down to 200
- Supports WAS V3.5 & V4
- WAS V5 and Express from 30/6/2003

WebSphere HATS

■ Host Access Transformation Server

Dynamically transforms 3270/5250 screens to HTML

Does not require access to source code

Provides stock HTML templates that can be tailored

Eclipse-based Studio

Includes a rules-based transformation engine

Integrates with WebSphere Application Server

Ships with WebSphere Host Integration Solution

Pricing

£313 per concurrent Internet user

£213 per registered Intranet user

■ HATS Limited Edition for iSeries

Subset of full HATS product

Runs with WAS V4, V5 and WAS – Express V5

Ships with iSeries Access Family V5R2 (5722-XW1) from 30/6/2003



WebSphere Commerce V5.4

Provides a framework for customers to establish effective, high-end B2B and B2C e-commerce Web sites



- **WebSphere Commerce Professional Edition (WCPE) *£56,000 per CPU***
 - Advanced order and inventory management, business campaign management, integrated business intelligence and reporting, live help (via SameTime) and supports auctions and payment management
- **WebSphere Commerce Professional Edition Entry *£14,000***
 - Functionally similar to WebSphere Commerce Professional
 - SameTime function not included
 - Restricted Terms and Conditions: 1 CPU and 1 store
- **WebSphere Commerce Business Edition (WCBE) *£87,700 per CPU***
 - Includes all the function in WCPE function plus significantly more B2B functionality

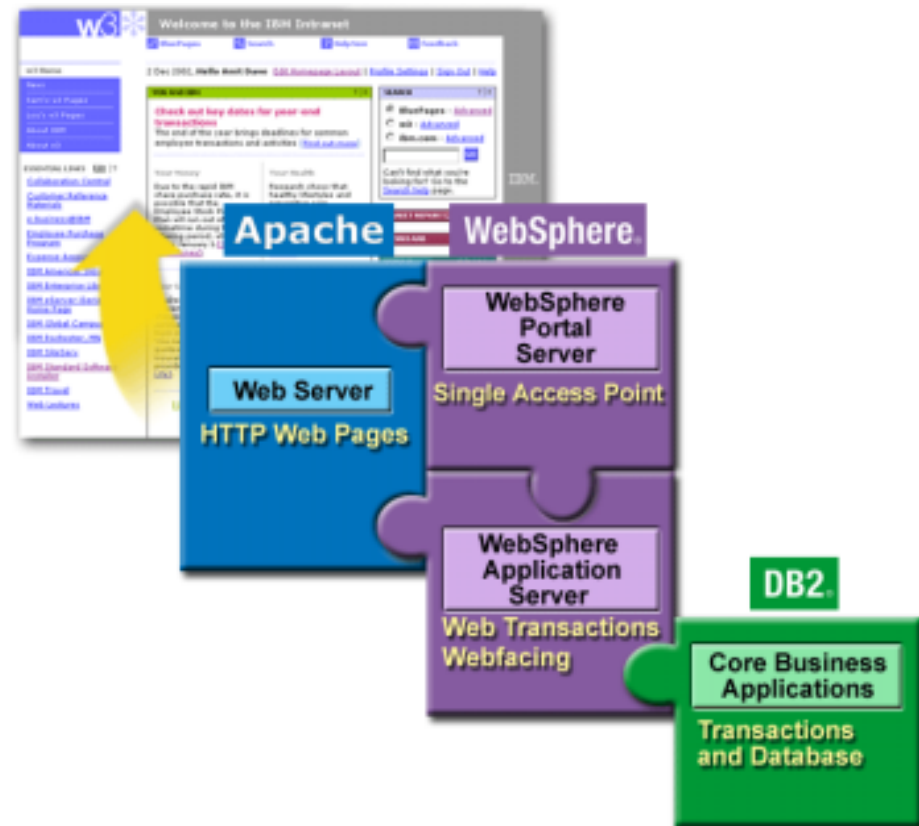
WebSphere Portal

Portals are Web pages tailored for specific users providing:

- A single point of personalised interaction
- Integrated content, applications, people and processes

WebSphere Portal Server Enable V4.1 for iSeries

- Quickly build scalable portals to simplify and speed your access to personalised information and applications
- £50K per CPU
- Sub-capacity pricing NOT supported



Summary

- Getting to the Web on iSeries has never been easier!
- Three new editions of WebSphere Application Server
 - V5 Express – emphasis on affordability, ease of installation and configuration
 - V5 Base – advanced functions including full J2EE
 - V5 Network Deployment – for high scalability and distributed applications
- Powerful new development tools
 - WebSphere Development Studio Client V5
 - WebSphere Development Studio Client V5 Advanced Edition
- Enhanced WebFacing Tool
 - No 5250 feature required on new models for WebFaced applications
- WebSphere Commerce and WebSphere Portal for high function solutions

Trademarks and Disclaimers

© IBM Corporation 1994-2003. All rights reserved.

References in this document to IBM products or services do not imply that IBM intends to make them available in every country. The following terms and trademarks or registered trademarks of International Business Machines Corporation in the United States, other countries, or both. This list is not a comprehensive list of all IBM trademarks.

400	ClusterProven	e business(logo)	IBM.COM	PowerPC	System/38
AIX	DataPropogator	e(logo) business	InfoPrint	PR/SM	ThinkPad
AIX/L (logo)	DB2	e-business (logo)	iSeries	pSeries	Tivoli
AIX 5L	DB2 Extenders	e-business Hosting	Magstar	Redbooks	VisualAge
Application System/400	DB2 OLAP Server	e-business on demand	MQSeries	SecureWay	WebSphere
AS/400	DB2 Universal Database	FlashCopy	Operating System/400	SmoothStart	X-Architecture
AS/400e	DRDA	IBM	OS/400	SQL/400	xSeries
Chipkill	e(logo)server	IBM (logo)	Parallel Sysplex	System/36	zSeries

Cc:Mail, Domino.Doc, Domino, Freelance Graphics, iNotes, LearningSpace, Lotus Notes, Lotus, Notes, QuickPlace, Sametime are trademarks owned by IBM-Lotus in the United States, other countries, or both. C-bus is a trademark of Corollary, Inc. in the United States, other countries or both.

Java and all Java-based trademarks are trademarks of Sun Microsystems, Inc. in the United States, other countries, or both.

Microsoft, Windows, Windows NT, and the Windows logo are trademarks of Microsoft Corporation in the United States, other countries, or both.

ActionMedia, LANDesk, MMX, Pentium and ProShare are trademarks of Intel Corporation in the United States, other countries, or both.

UNIX is a registered trademark of The Open Group in the United States and other countries.

SET and the SET Logo are trademarks owned by SET Secure Electronic Transaction LLC.

Other company, product and service names may be trademarks or service marks of others.

Information is provided "AS IS" without warranty of any kind.

All customer examples described are presented as illustrations of how those customers have used IBM products and the results they may have achieved. Actual environmental costs and performance characteristics may vary by customer.

Information in this presentation concerning non-IBM products was obtained from a supplier of these products, published announcement material, or other publicly available sources and does not constitute an endorsement of such products by IBM. Sources for non-IBM list prices and performance numbers are taken from publicly available information, including vendor announcements and vendor worldwide homepages. IBM has not tested these products and cannot confirm the accuracy of performance, capability, or any other claims related to non-IBM products. Questions on the capability of non-IBM products should be addressed to the supplier of those products.

All statements regarding IBM future direction and intent are subject to change or withdrawal without notice, and represent goals and objectives only. Contact your local IBM office or IBM authorized reseller for the full text of the specific Statement of Direction.

Some information in this presentation addresses anticipated future capabilities. Such information is not intended as a definitive statement of a commitment to specific levels of performance, function or delivery schedules with respect to any future products. Such commitments are only made in IBM product announcements. The information is presented here to communicate IBM's current investment and development activities as a good faith effort to help with our customers' future planning.

Performance is based on measurements and projections using standard IBM benchmarks in a controlled environment. The actual throughput or performance that any user will experience may vary depending upon considerations such as the amount of multiprogramming in the user's job stream, the I/O configuration, the storage configuration, and the workload processed. Therefore, no assurance can be given that an individual user will achieve throughput or performance improvements equivalent to the ratios stated here.

Photographs shown are of engineering prototypes or representation of product functions. Changes may be incorporated in production models.