

IBM Software

Benvidos ao

I Encontro de Usuários IBM Sterling

28/08/2014

AGENDA

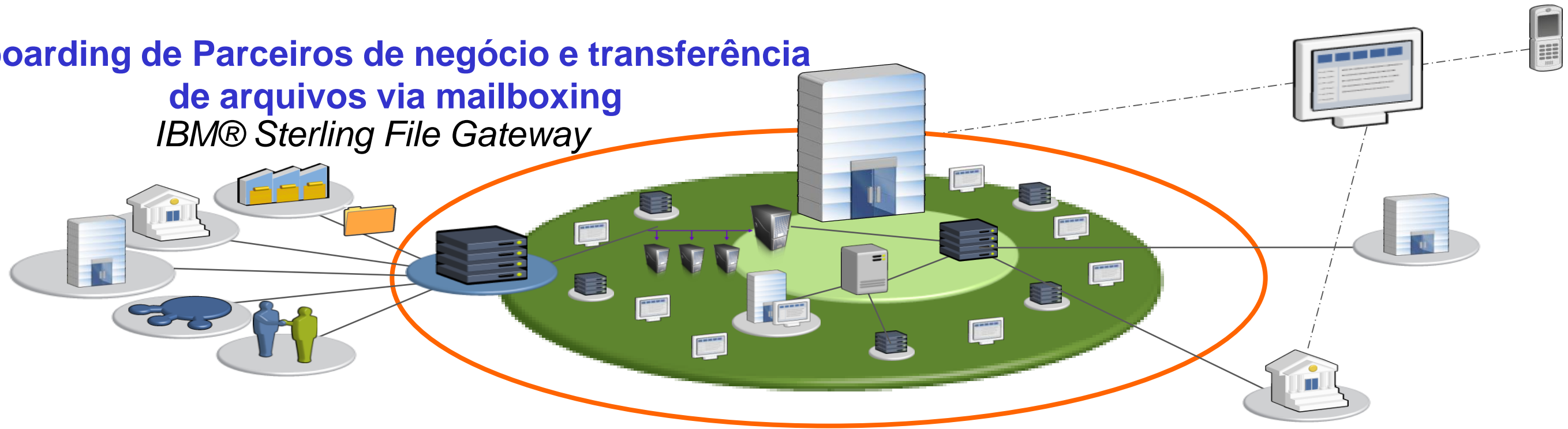
09h30 - 10h10	Apresentação de portfólio B2B Roadmap da solução e melhores práticas.	Everaldo Candolo Gerente de vendas para soluções B2B Wilson Migotto Especialista Técnico em soluções B2B
10h10 - 10h50	Speaker Convidado - CIP Venha conhecer como a Câmara Interbancária de Pagamentos superou seus desafios.	Vinícius Bispo Britto Infraestrutura e Suporte TI Luciano Flamínio Amato Arquiteto de Soluções
10h50 - 11h10	Demonstração Novidades, uso da solução e momento para discussão prática	Wilson Migotto Especialista Técnico em soluções B2B
11h10 – 11h25	Speaker Convidado - Banrisul Venha conhecer como o Banrisul superou seus desafios.	Jorge Eduardo Motter Infraestrutura e Suporte TI
11h25 - 12h10	Mesa redonda Momento de feedbacks dos usuários, discussões e dúvidas	Todos

Soluções IBM Sterling

Transformação e Orquestração de dados de Parceiros de negócio
IBM® Sterling B2B Integrator

Monitoramento e Gestão da atividade de transferência de arquivos e SLAs
IBM® Sterling Control Center

Onboarding de Parceiros de negócio e transferência de arquivos via mailboxing
IBM® Sterling File Gateway



Prevenção de acesso não autorizado
IBM® Sterling Secure Proxy

Transferência de arquivos Peer-to-peer
IBM® Sterling Connect:Direct®

IBM Sterling Connect Direct

IBM Sterling Connect Direct - Licenciamento

- Features que agora fazem parte do licenciamento básico:
 - Connect:Direct Secure+
 - Connect:Direct FTP+
 - All protocols: SNA, TCP/IP, UDT
 - Java Application Interface
 - SDK
- Estão disponíveis a partir das versões:
 - CD for Windows: 4.6 (versão atual: 4.7)
 - CD for Unix: 4.1 (versão atual: 4.2)
 - CD for zOS: 5.1 (versão atual: 5.2)

Sterling - Links Úteis

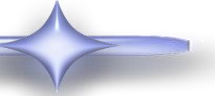
- Link legal da Política e lista dos produtos back level e produtos ativos
<http://www-01.ibm.com/support/docview.wss?uid=swg21508721>

- Solicitação de Chaves de Ativação

MFT: <https://www.ibm.com/services/forms/signup.do?source=swg-stermft-req>

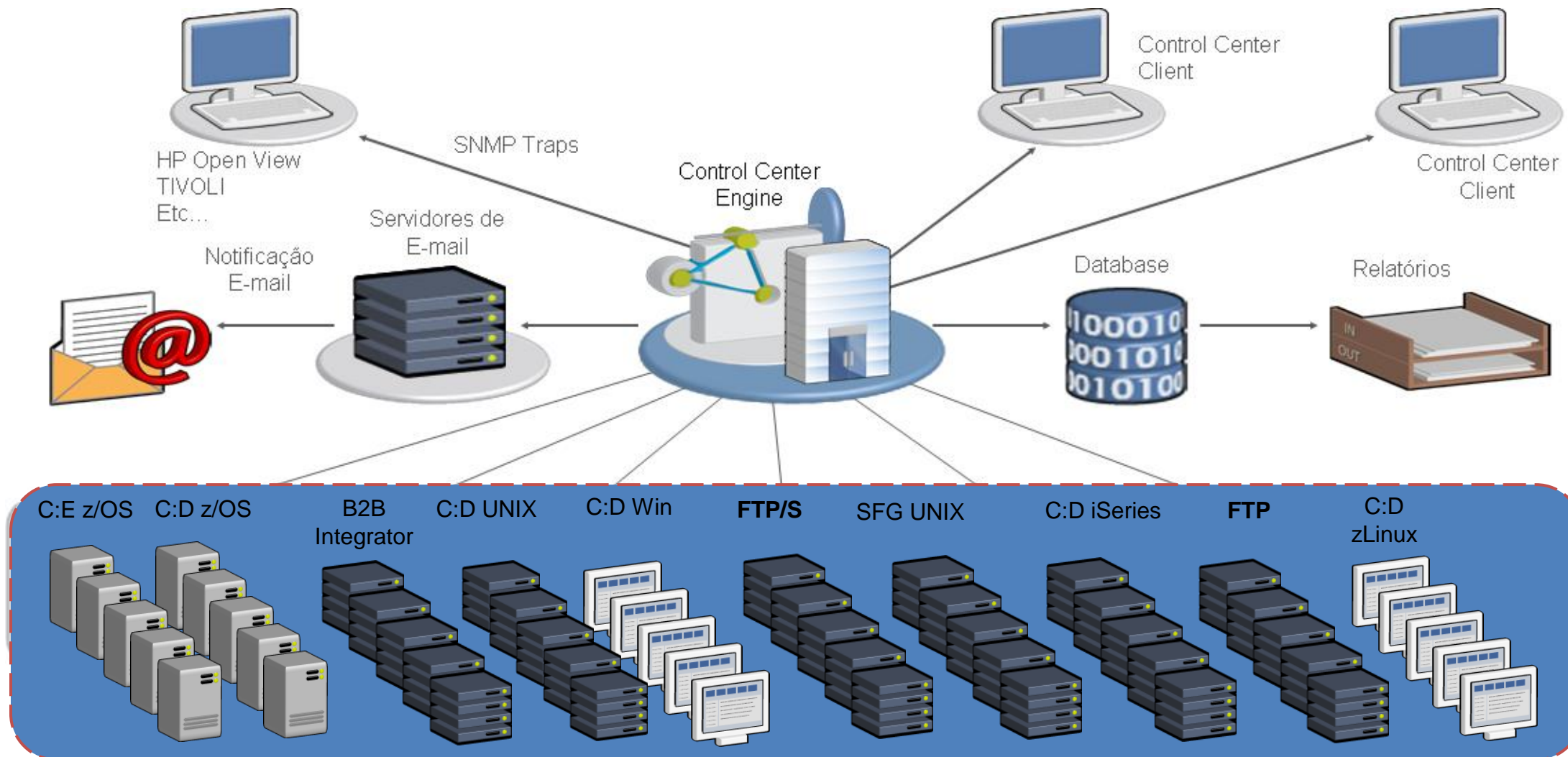
B2B: <https://www14.software.ibm.com/webapp/iwm/web/signup.do?source=swg-stersisfg-req>

IBM Sterling Control Center



IBM Sterling Control Center - versão 5.4.2

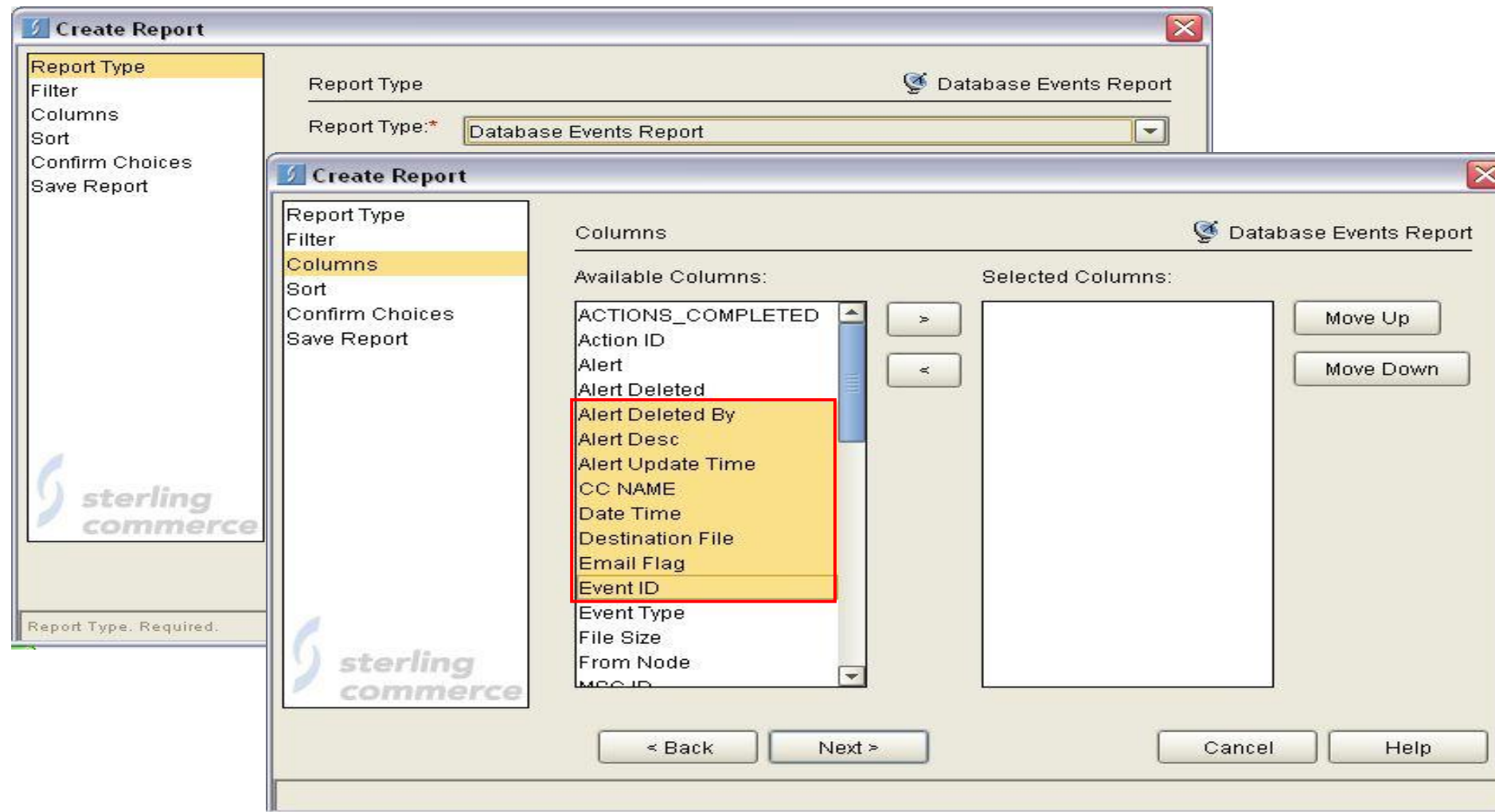
- Solução de Monitoração baseada em Regras de Negócio e Gerenciamento Remoto



Control Center: Gerência de Eventos



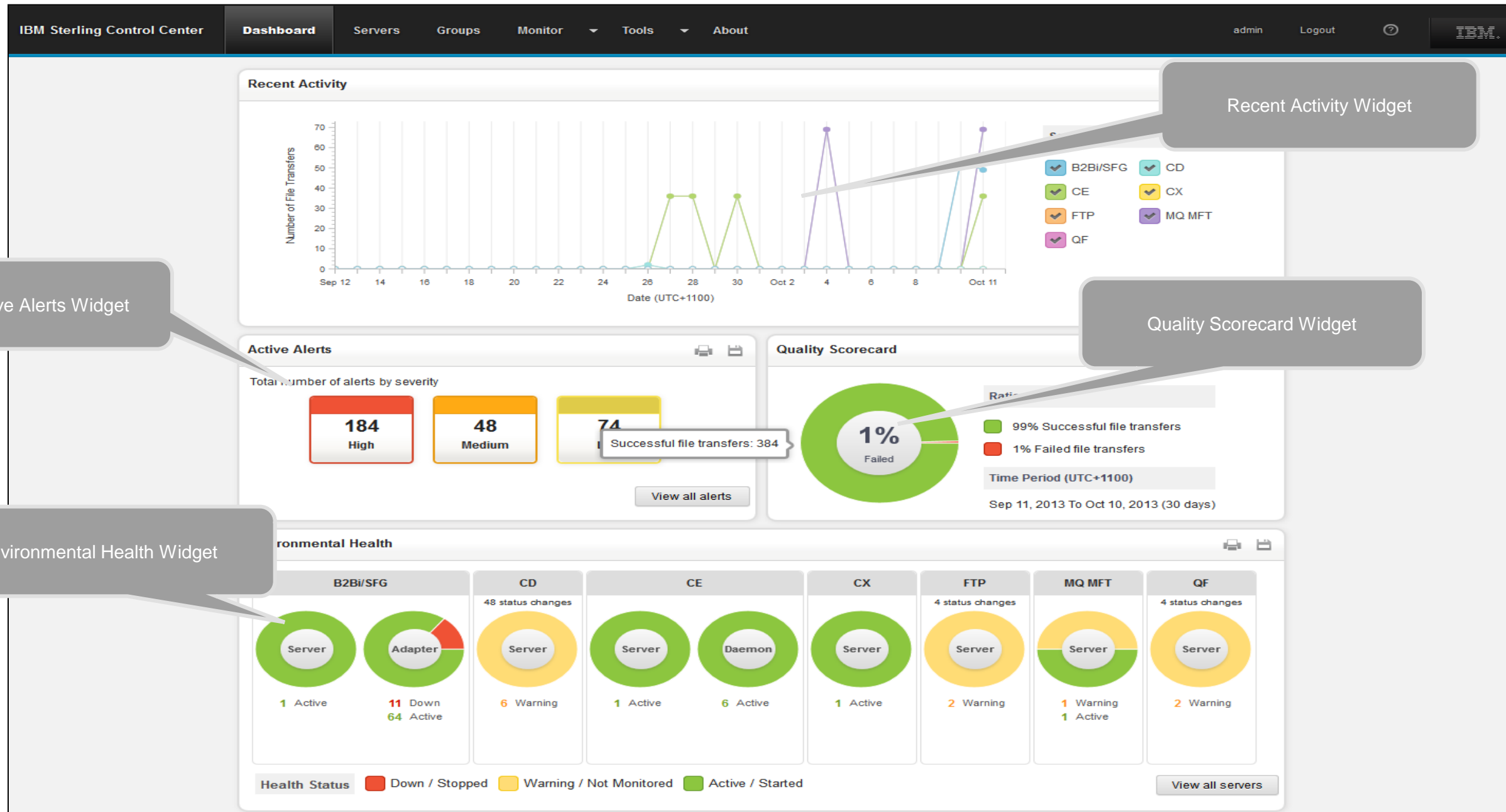
Control Center: Geração de Relatórios Dinâmicos



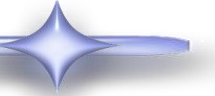
Selecione as Colunas:

- Alert Deleted By
- Alert Description
- Alert Update Time
- CC Name
- Date Time
- Destination File
- Email Flag
- Event ID

IBM Sterling Control Center - Dashboard

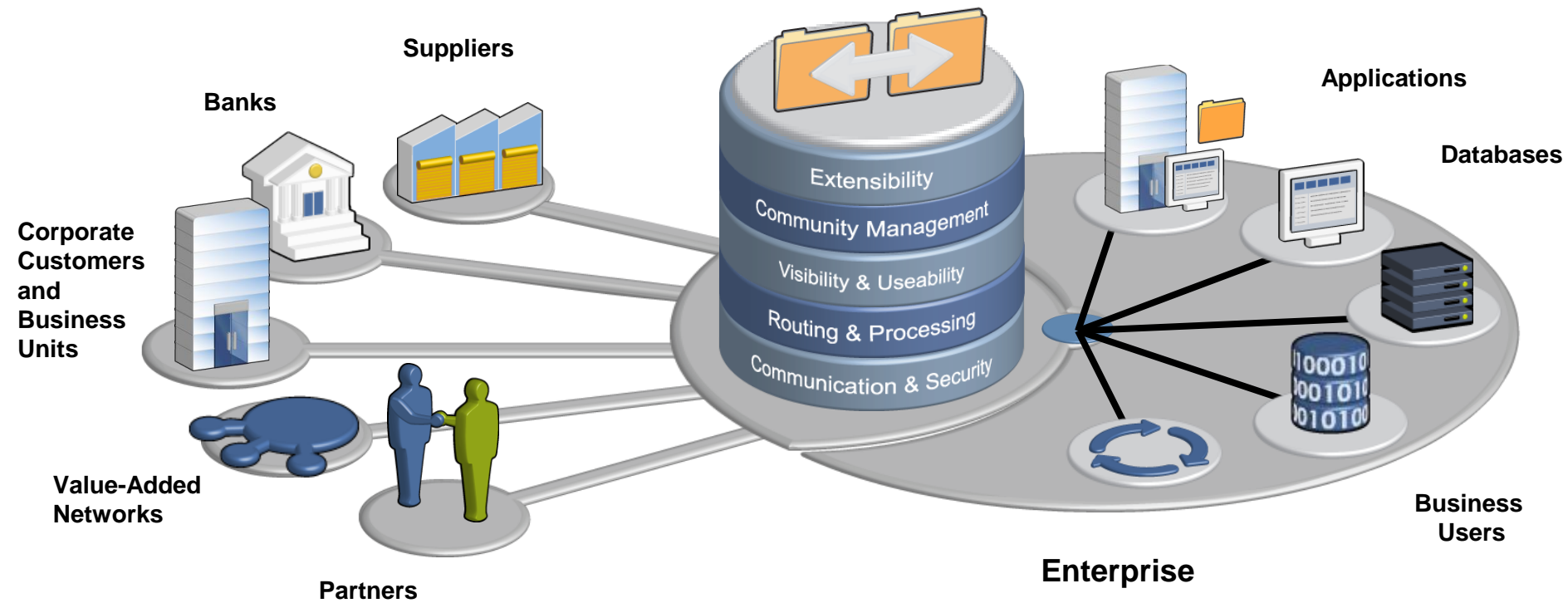


IBM Sterling File Gateway



IBM Sterling File Gateway

A próxima geração de MFT – Managed File Transfer



Routing Channels

IBM Sterling File Gateway - Windows Internet Explorer

http://127.0.0.1:5000/filegateway/home.do#routeChannel

Welcome fg_sysadmin

Routes Participants Tools Profile Help Sign Out

Template : Producer : Consumer : Find Clear

There are 22 Routing Channels.

Template	Producer	Consumer	Producer Mailbox Path	Provisioning Facts
Dynamic Broadcast to Member Consumers	BroadcastDemoMailList	** dynamic **	/BroadcastDemoMailList	
Demo_PGP_Encrypt	Demo_AccountsPayable	Demo_BigBank	/Demo_AccountsPayable	
Demo_UnZip	Demo_Agents	Demo_TransactionSystem	/Demo_Agents/Zip	
Demo_PGP_Decrypt	Demo_BigBank	Demo_CDPartner	/Demo_BigBank	
Demo_Content_Based	Demo_BillingSystem	** dynamic **	/Demo_BillingSystem	
Demo_Route_By_Filename	Demo_BillingSystem	** dynamic **	/Demo_BillingSystem	
Demo_PassThrough	Demo_CarDealer	Demo_PaymentSystem		
Demo_PassThrough	Demo_CDPartner	Demo_AS2Partner	/Demo_CDPartner	
Demo_PassThrough	Demo_DrJohnDoe	Demo_BillingSystem	/Demo_DrJohnDoe	
Demo_PassThrough	Demo_LDAPPartner	DEMO_WMQ	/Demo_LDAPPartner	
Demo_File_Rename	Demo_MoesTrucking	Demo_Operations	/Demo_MoesTrucking	
Demo_PHEAA_File_Rename	Demo_PHEAA_Partner	Demo_PHEAA_App	/Demo_PHEAA_Partner	
Demo_Content_Based	Demo_ReportingSystem	** dynamic **	/Demo_ReportingSystem	
Static Broadcast or Direct to Consumer	Demo_ReportingSystem	BroadcastDemoMailList	/Demo_ReportingSystem/SendTo_BroadcastDemo...	
Demo_PHEAA_File_Rename	Demo_SmallRetailer	Demo_PHEAA_Email	/Demo_SmallRetailer	
Demo_File_Rename	Demo_SoftwareConsumer	Demo_Support	/Demo_SoftwareConsumer	
Demo_PGP_Decrypt	Demo_Supplier	Demo_OrderManagement	/Demo_Supplier	

Connecta os parceiros de negócio de forma rápida

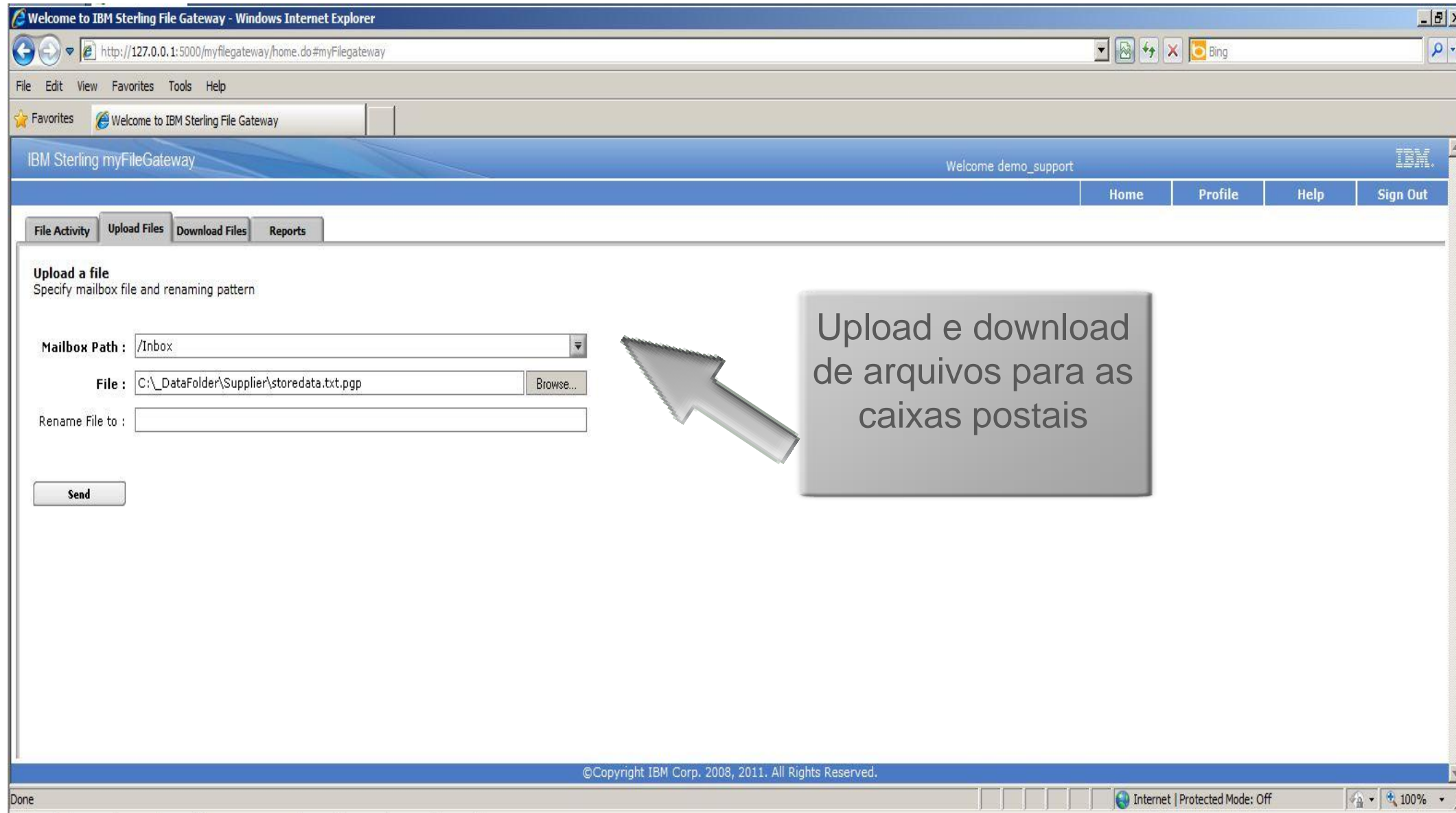
Create Edit Delete

©Copyright IBM Corp. 2008, 2011. All Rights Reserved.

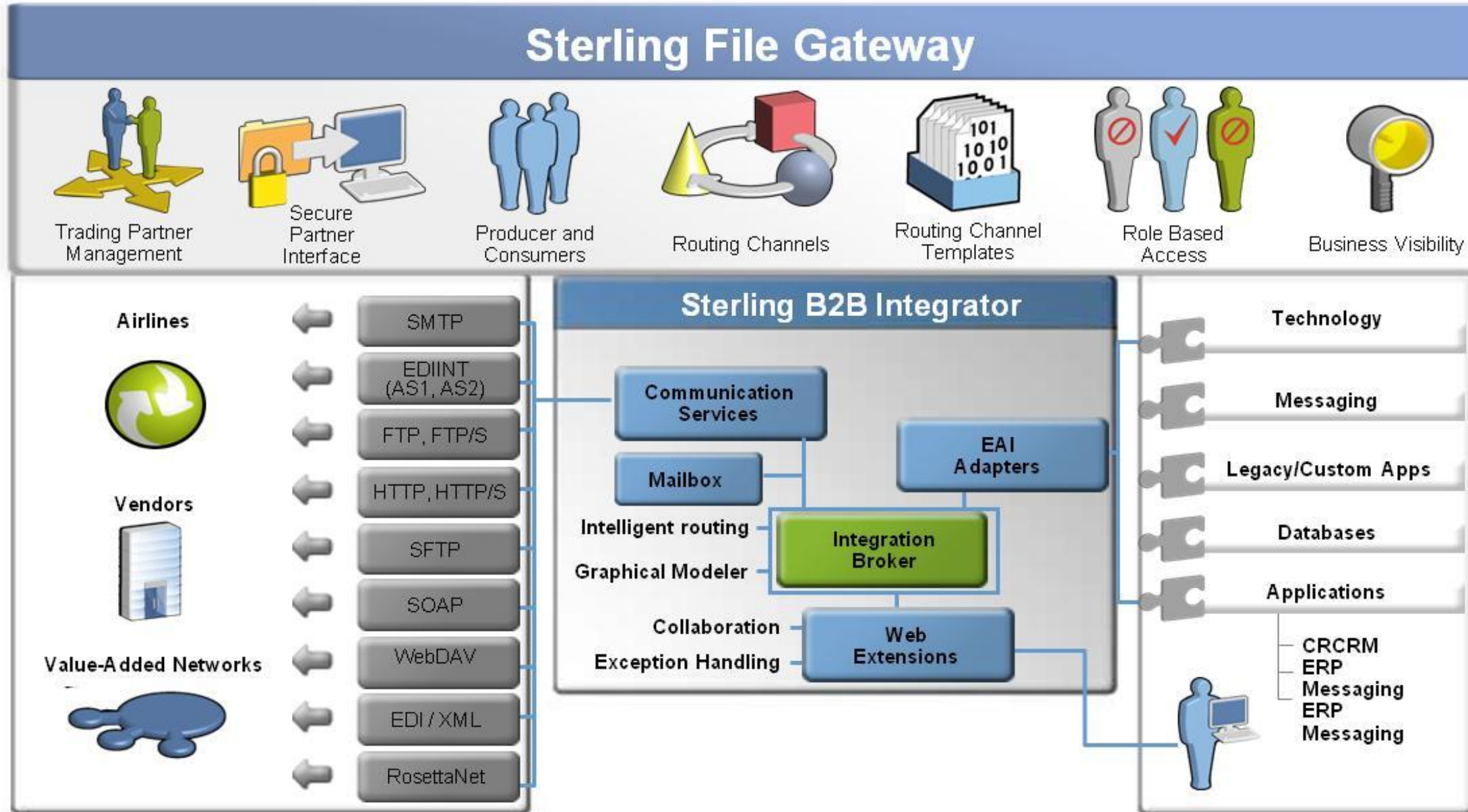
Gerência da Comunidade

The screenshot displays the 'Manage Partners' section of the IBM Sterling File Gateway. The top navigation bar includes 'Routes', 'Participants', 'Tools', 'Profile', 'Help', and 'Sign Out'. The main content area is titled 'Manage Partners' and includes a sub-header 'Select a Partner to view the Groups it belongs to'. On the left, a list of partners is shown, including 'BroadcastDemoMailList', 'BroadcastProducer', 'BroadcastProducer2', 'Demo_AccountsPayable', 'Demo_Agents', 'Demo_AS2Partner', and 'Demo_BigBank'. Below this list are 'Create', 'Edit', and 'Refresh' buttons. On the right, a list titled 'Groups that Selected Partner belongs to' shows 'All Partners'. A mouse cursor points to 'All Partners', and a callout box contains the text: 'Gerência de Usuários por Grupos Interface Simplificada, Rápido on-boarding de novos parceiros'. The footer of the interface reads '©Copyright IBM Corp. 2008, 2011. All Rights Reserved.'

Interface WEB



Sterling File Gateway Solution Footprint



Infocenter - Softwares IBM

Infocenter

- IBM Sterling B2B Integrator
 - <http://www-03.ibm.com/software/products/en/category/b2b-integration>
 - <http://www-142.ibm.com/software/products/br/pt/b2b-integrator>
- IBM Sterling Secure Proxy
 - <http://pic.dhe.ibm.com/infocenter/ssp/v3r4/index.jsp>
 - <http://www-142.ibm.com/software/products/br/pt/secure-proxy>
- IBM Sterling Control Center
 - <http://pic.dhe.ibm.com/infocenter/scc/v5r4m2/index.jsp>
 - <http://www-142.ibm.com/software/products/br/pt/control-center>
- IBM Sterling Connect Direct
 - <http://www-142.ibm.com/software/products/br/pt/connect-direct>
- IBM Sterling File Gateway
 - <http://www-03.ibm.com/software/products/br/pt/file-gateway>
 - <http://www-01.ibm.com/support/docview.wss?uid=swg27023829>

Roadmap Evolutivo



Estudo realizado pela Vanson Bourne

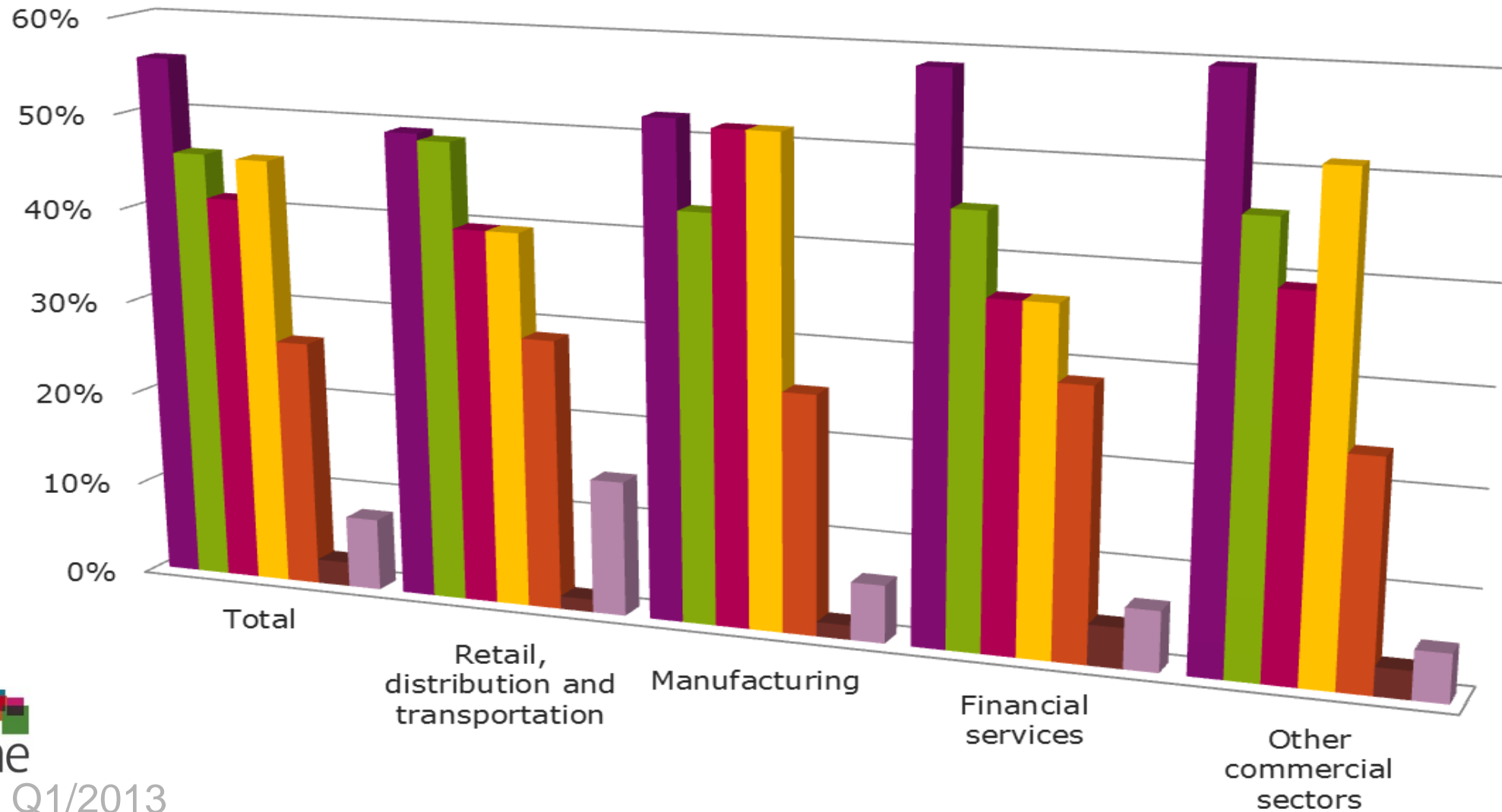
Estudo conduzido por Vanson Bourne, por solicitação da IBM em Q1 2013

- 650 Executivos Sênior de IT executives de **8 Países**:
US, UK, France, Germany, South Africa, China, Australia, & Brazil
- Espalhados por **7 Indústrias**:
Financial Services, Manufacturing, Retail, Telecoms, Distr/Logistics/Trans,
Energy/Utilities, & Healthcare
- Com **6 cargos** na área de TI:
C-level, Diretor TI, Gerente de TI, Operações, Arquiteto e Segurança

Principais preocupações com MFT

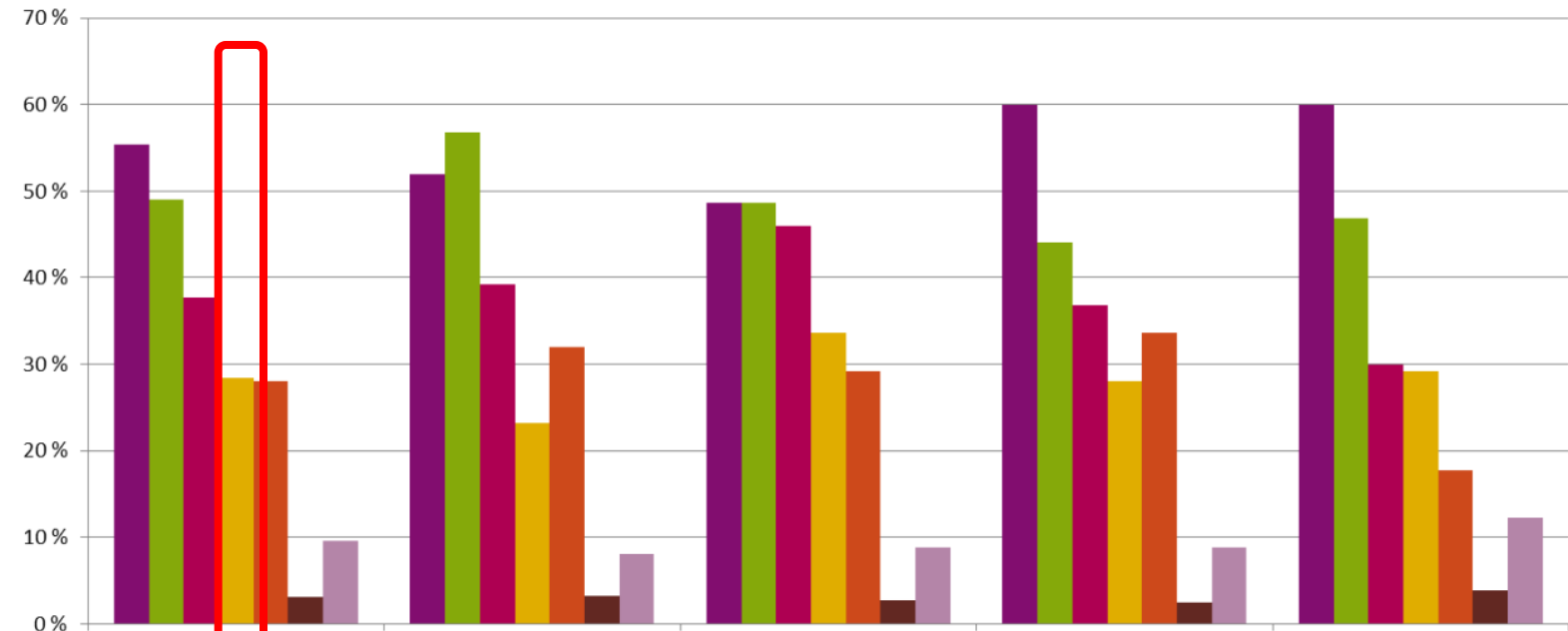
(Transferências de arquivos gerenciadas)

Qual das seguintes questões limita a eficácia de seus sistemas de transferência de arquivo?

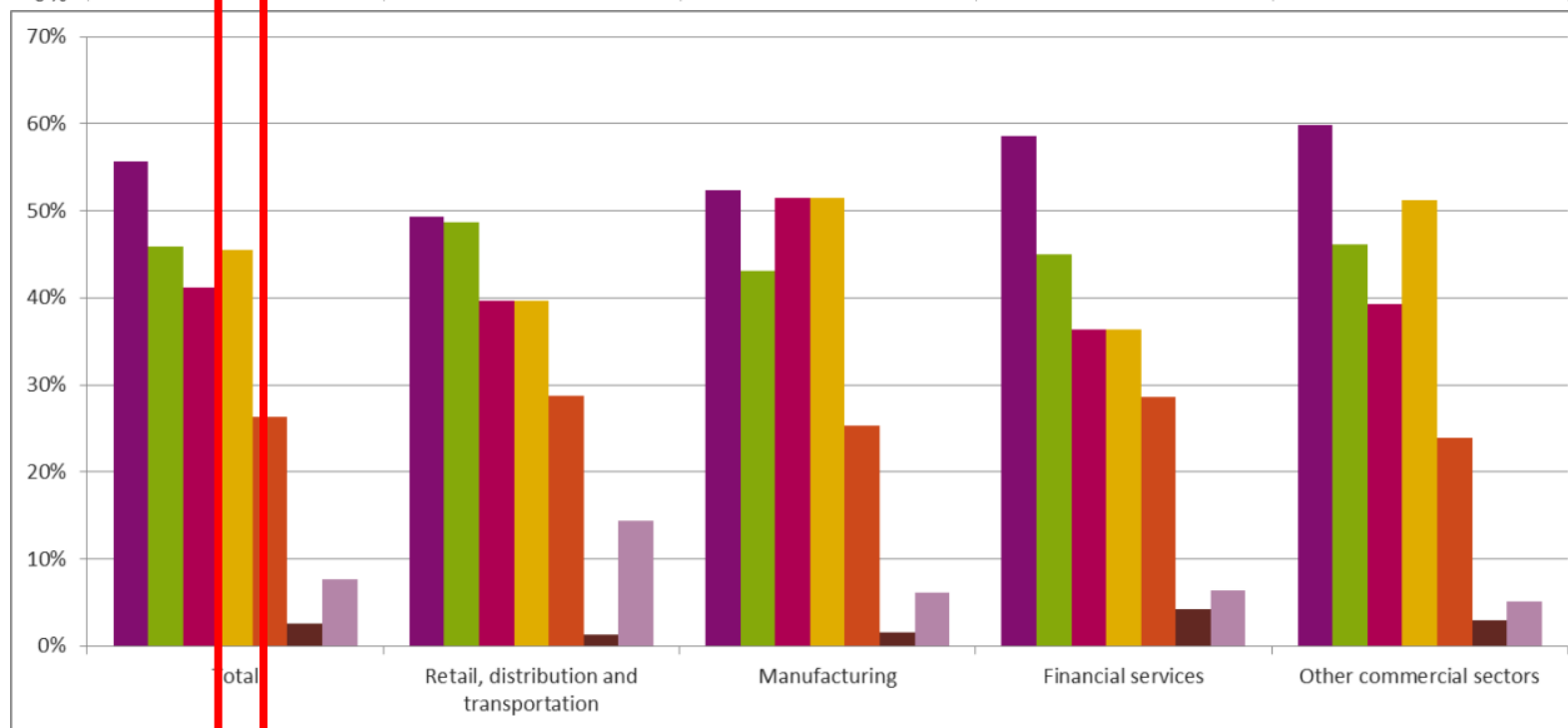


Velocidade era um obstáculo crescente!

2010



2013





ASPERA HIGH-SPEED TRANSFER

Moving the world's data at maximum speed



Universal Pictures produces major motion pictures such as “Battleship” and “Snow White” – massive projects requiring an army of partners and facilities seamlessly working together to deliver a top-notch final product.

Solution: High-speed, reliable and secure exchange of daily post-production media files (15-30GB each) between multiple companies around the globe using Aspera *aspex*.

Benefit: Easy-to-use file transfer solution that’s deployed in hours, not weeks and real-time collaboration between geographically distributed teams leading to significant reduction in production cycle times.



BGI, the world’s largest genomics research institute, produces thousands of genomes a day. Using hard drives to send data to customers and partners had proven expensive, error-prone and time consuming.

Solution: BGI integrated Aspera’s FASP high-speed transfer technology into its “EasyGenomics™” cloud-based bioinformatics service and deployed Aspera Connect Server for high speed sequencing data delivery service.

Benefit: With fast cloud transfers, EasyGenomics™ takes advantage of unlimited parallel computing offered by the cloud and Aspera’s rich APIs enabled the integration of high-speed transfers directly within EasyGenomics™ web portal.



With over 23 million streaming members globally, Netflix delivers streaming movies and TV shows to over 700 different devices – PCs, internet-connected TVs, gaming consoles, tablets and smart phones.

Solution: With over 50 terabytes of new content a month from over 200 global partners, Netflix uses Aspera On Demand Direct-to-S3 technology to move, process and store content in Amazon Web Services S3 storage.

Benefit: High-speed FASP transfers direct to S3 storage allow Netflix to leverage the extreme scalability of AWS, eliminating the need to build its own data centers and enabling on demand compute capacity control.



AT&T U-verse delivers advanced digital TV, high-speed Internet, and digital home phone service together over state of the art fiber optic technology and computer networking as a fully integrated experience.

Solution: High-speed digital file transfers of ad content from sponsors into an end-to-end fully automated ad-ingest and file-based workflow that verifies, schedules, and confirms delivery and broadcast.

Benefit: “Lights out” automation enables large scale ad ingest, with high reliability and service levels driving increased ad revenue and more sponsors at significantly lower operational costs.

