



IBM 8260 Nways Multiprotocol Switching Hub

Intelligent hub, LAN switching and ATM—all in one unit

Full RMON and RMON-2

Integrated LAN and ATM management

3 sizes to accommodate a range of networks

Investment protection

Award-winning MSS support

Easy migration from shared-media LANs to LAN switching

Interchangeable modules for flexibility

General description

The IBM 8260 Nways Multiprotocol Switching Hub delivers flexibility, reliability and manageability in a single, high-capacity multiprotocol hub. Designed for multi-workgroup and campus backbone applications, the 8260 delivers the functions you need to build high-speed ATM networks while you continue to connect existing Ethernet, Token-Ring and FDDI networks. The 8260 comes in three sizes to accommodate a range of network configurations with or without ATM or a Packet Channel LAN switch backplane or both.

With more than 70 modules available the 8260 combines the functions of a shared-media, modular, intelligent hub with LAN and ATM switches in a single unit, providing a smooth migration path from shared-media to high-speed, switched networks. The 8260 accepts a wide range of Ethernet, Token-Ring, FDDI and ATM modules as well as unique features such as MPEG-2 Video Distribution Modules. It can also accept any module from IBM's midrange 8250 Multiprotocol Intelligent Hub. The IBM Multiprotocol Switched Services (MSS) Server Module for the 8260 is functionally equivalent to the stand-alone IBM 8210 MSS Server and is the key to implementing IBM's Switched Virtual Networking in environments that combine workgroup LAN or ATM switches and ATM backbones.

The 8260 eliminates the need for multiple devices, reducing cost and network complexity. With its fault-tolerant features, like hot-swappability, intelligent power management and a distributed management system, the 8260 can improve overall network availability and reduce the cost of operation and ownership.

Hot buttons

- Shared LAN, LAN switching and ATM integration
- Three sizes: 17-slot, 10-slot and 7-slot
- Options for ATM backplane, Packet Channel LAN switch backplane or both
- ATM Control Point Microcode V 3.1 for super Emulated LAN (ELAN) and PNNI support



IBM versus the competition

- *Cisco*
 - No interconnection of LAN and ATM backplanes in Catalyst 5500
 - No Token-Ring switching
 - No LAN switching in LightStream 1010
 - No shared LAN support
- *Fore Systems ASX-1000*
 - No switched LAN support—Ethernet, Token Ring or FDDI
 - No shared LAN solution for Token Ring or FDDI
 - Based on old time-division multiplexing (TDM) technology
- *Bay Networks 5000BH*
 - No switched FDDI support
 - No adaptive cut-through for Token-Ring switching
 - No redundant switch

Reasons to choose the IBM 8260

- Advanced backplane architecture for high reliability
- Intelligent power and inventory management
- Extensive fault tolerance
- Investment protection through built-in Ethernet, Token-Ring and FDDI versatility
- High-capacity LAN switching ATM for workgroups
- Extensive hub and network management capabilities
- MSS support with advanced LANE, APPN and Next Hop Resolution Protocol (NHRP) functions

Solution

1. 8260 ATM Switch with MSS Module or 827x Switching Module

2. 8273/8274

3. 622 Mbps

4. Dedicated 10- or 100-Mbps

5. Shared 10- or 100-Mbps Ethernet

6. 25 Mbps

7. 8285

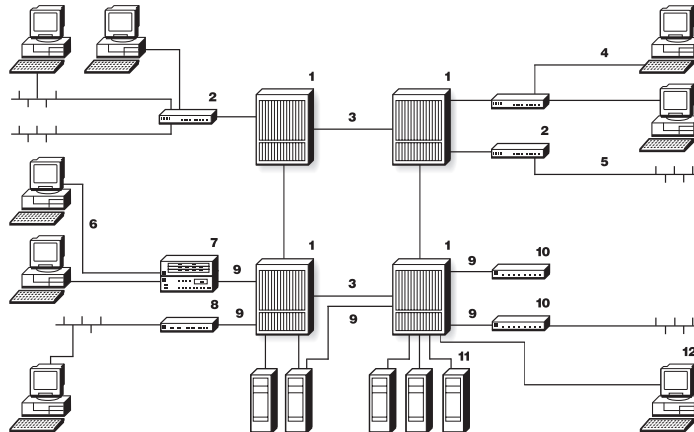
8. 8271

9. 155 Mbps

10. 8272

11. Servers

12. Network management station



For more information

Visit the IBM Networking Home Page at www.networking.ibm.com.



© International Business Machines Corporation 1997

Department CV3
PO Box 12195
RTP NC 27709
USA

Printed in the United States of America
9-97

All Rights Reserved

References in this publication to IBM products or services do not imply that IBM intends to make them available in all countries in which IBM operates.

Copying or downloading the images contained in this document is expressly prohibited without the written consent of IBM.

The following are trademarks of International Business Machines Corporation in the United States and/or other countries: APPN, IBM and Nways.

Other company, product and service names may be trademarks or service marks of other companies.



Printed on recycled paper

DIDA52