

*Easy to install, easy to use, easy to afford*



## IBM Ethernet Desktop Hub (8242) Models 008 and 016

- **Suitable for home and small office environments**
- **Flexible and reliable enough for use even in large establishments**
- **Usable with all standard STP, UTP and FTP cables**
- **Two models support 8 and 16 ports respectively**
- **Both models can be cascaded to support larger networks via the MDI (uplink) port**
- **Connects to 10BASE5, 10BASE2 and fiber network segments via an AUI port (Model 016 only)**
- **Provides port-by-port link/activity and partition LEDs**
- **Partitions ports automatically when excessive collisions or jabbering are detected**



*Model 008*



*Model 016*

The IBM Ethernet Desktop Hub (8242) Models 008 and 016 are high-availability 10BASE-T Ethernet Hubs for small business and home networking. These hubs have been designed and tested to be qualified as high-availability hubs. The 8242 provides options such as jabber control, auto-partitioning and auto-reconfiguring, previously available only on higher cost devices. The 8242 will give you years of trouble-free operation due to the strong reliability designed in the product from the very beginning.

## Positioning and Benefits

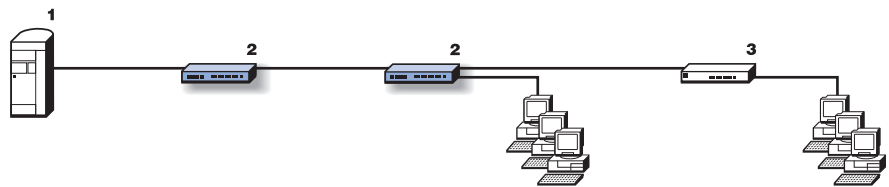
The IBM 8242 Ethernet Desktop Hub is an enhanced follow-on to the IBM 8222 Nways Ethernet Workgroup Hub. It offers high reliability, a smaller footprint, and a much lower price than the 8222, allowing the customer to easily create an affordable Ethernet LAN wherever needed. The 8242 has all of the reliability and many of the features and problem determination aids of IBM's larger network hubs, yet it retains the simplicity of an entry-level hub.

**Problem:** Affordable, reliable 10-Mbps Ethernet connectivity for small or medium-sized businesses, and increased need for connectivity for home offices or small work groups of a large establishment.

**Environment:** Cost effective network connectivity for small businesses as well as larger enterprise networks, new network installations and additional users added to current networks using 10-Mbps shared connectivity.

**Solution:** The 8242 supercedes the withdrawn 8222 and provides the same connectivity capabilities when adding new users to the network. It also possesses cascable capabilities providing the additional connectivity at affordable pricing.

1. Server
2. 8242
3. 8222 or 10 Mbps unmanaged hub



### Benefits

- Affordable connectivity
- High reliability
- Smaller footprint (two abreast on a rack shelf)
- Easy to install and easy to use

## Product Overview

The IBM Ethernet Desktop Hub (8242) allows you to create an affordable Ethernet LAN wherever you need it. Whether you want to link all of the computers in your home or install your first network in a small business or branch office, the 8242 offers an ideal solution. It has many of the features and problem determination aids and all of the reliability of IBM's large-network hubs, yet retains the simplicity of operation of an entry-level hub. And, as your network grows, the 8242 is flexible enough to meet your needs for years to come.

In addition to meeting all of the requirements of the IEEE 802.3 Ethernet standard and the FCC electronic emissions requirements for office environments, the 8242 also meets the

more stringent FCC requirements for home installation. So now you can enjoy all the flexibility of the world's most popular LAN to connect devices in your home together. And the 8242 will give you years of trouble-free operation because the reliability has been designed in from the very beginning.

### **Big-box features in a small package**

In addition to supplying the traditional IBM values of reliability, high function and adherence to industry standards to ensure interoperability, the 8242s bring a host of benefits to their users.

- Small Ethernet LANs can be built in a matter of minutes to serve immediate needs.

- No special environmental considerations apply.
- No special crossover cables or AUI-to-10BASE2 transceivers are required (Model 016 only).
- Auto-ranging power supplies eliminate the need for multiple models for different countries.
- Options such as jabber control, auto-partitioning and auto-reconfiguring, previously available only on higher cost devices, are available on the 8242s at one of the lowest costs per port in the industry.
- A full range of transmission media choices help speed installation and control the costs of moves, adds and changes.

# Ethernet Desktop Hub (8242) Specifications

<b>Physical specifications</b>				
<b>Model</b>	<b>Width</b>	<b>Depth</b>	<b>Height</b>	<b>Weight</b>
008	222.2 mm (8.7 in.)	135.0 mm (5.3 in.)	29.0 mm (1.1 in.)	0.76 kg (1.7 lb)
016	219.0 mm (8.6 in.)	151.0 mm (5.9 in.)	49.8 mm (2.0 in.)	1.4 kg (3.1 lb)

<b>Operating environment</b>				
<b>Dry-bulb temperature</b>	<b>Maximum wet-bulb temperature</b>	<b>Storage temperature</b>	<b>Relative humidity</b>	
10° to 40°C (50° to 104°F)	27°C (84°F)	-25° to 70°C (-13° to 158°F)	8% to 80%	

<b>Power</b>				
<b>Model</b>	<b>Nominal input voltage</b>	<b>Frequency range</b>	<b>Power dissipation (maximum)</b>	
008 (external, auto-ranging ac/dc power adapter)	100 to 250 V ac	50 to 60 Hz	5.94 watts (36 BTU/hour)	
016 (internal, auto-ranging power supply)	100 to 240 V ac	50 to 60 Hz	175 watts (59.7 BTU/hour)	

<b>Standards</b>		
<b>Function</b>	<b>Electromagnetic compatibility</b>	<b>Safety</b>
IEEE Standard 802.3 10BASE-T	<ul style="list-style-type: none"> <li>• USA FCC Class B</li> <li>• VCCI Class A ITE</li> <li>• CISPR/EN55022 Class B with unshielded cables</li> <li>• JEIDA</li> <li>• VCCI Class A</li> <li>• Korean EMI regulation (CISPR-B)</li> <li>• Canada ICES regulations (FCC B)</li> <li>• Taiwan EMI regulation (CISPR-B)</li> <li>• Australia/New Zealand EMI regulations (CISPR-B)</li> <li>• Mexico product certification</li> <li>• China product certification</li> </ul>	<ul style="list-style-type: none"> <li>• UL 1950, 2nd Edition</li> <li>• EN60950, most current level</li> <li>• CSA certified (CSA 22.2 No. 950; Second Edition)</li> <li>• Council directive 73/23/EEC (Low Voltage Directive); (IEC 950, 2nd Edition), including Amendments 1, 2, 3 and 4</li> <li>• CB Bulletin, most current level, with all national differences</li> <li>• IBM Safety Standards, Secondary circuit protection and V1 flammability or higher</li> </ul>

## Key Customer Benefits

- Crossover ports allow use of straight-through cables for all connections, requiring no special crossover cables
- AUI port allows connection to 10BASE2, 10BASE5 and 10BASE-F Ethernets
- MDI port allows cascading of 8242s with straight-through cables
- Front-panel LEDs provide box-level and port-level information for operational monitoring and troubleshooting
- Jabber Lockup Protection automatically partitions jabbering ports to ensure the operation of the rest of the segment
- Automatic Polarity-Reversal Correction prevents failures brought about by copper cable polarity reversals

## Supplementary Information

The following sales tools are available for the 8242:

- Specification sheet:  
*IBM Ethernet Desktop Hub (8242) Models 008 and 016, G224-4563*
- Information on the 8242 is available at:  
[www.networking.ibm.com/242/242prod.html](http://www.networking.ibm.com/242/242prod.html)