

High-speed connectivity to the desktop at a low cost

IBM Fast Ethernet Desktop Switch 8275 Model 324

- **Inexpensive Fast Ethernet Desktop switch solution for small and medium-sized businesses**
- **24 ports of 10/100 connectivity with high industry—leading performance**
- **RMON support for events, alarms, history and statistics**
- **Simple Network Management Protocol (SNMP) management and Web management**
- **Cut-through and store-and-forward modes with auto-detection and selection options**
- **Support for 8000 MAC addresses per switch**
- **Rack-mountable**
- **Automatic MAC address aging**
- **Available in a convenient desktop unit**



IBM Fast Ethernet Desktop Switch 8275 Model 324

The IBM Fast Ethernet Desktop Switch 8275 Model 324 continues to complement our Ethernet Family of products by providing a powerful Ethernet switch solution for small and medium-sized businesses. The Model 324 is an attractive offering with its powerful 10/100 auto-sensing desktop connectivity. It is an industry price and performance leader that completes the IBM Ethernet end-to-end solution. Coupled with the high port density and the low price, the 324 offers a solid 10/100 solution to the desktop.

The IBM Fast Ethernet Desktop Switch comes standard with twenty-four 10/100BASE-TX Ethernet ports in a convenient desktop unit.

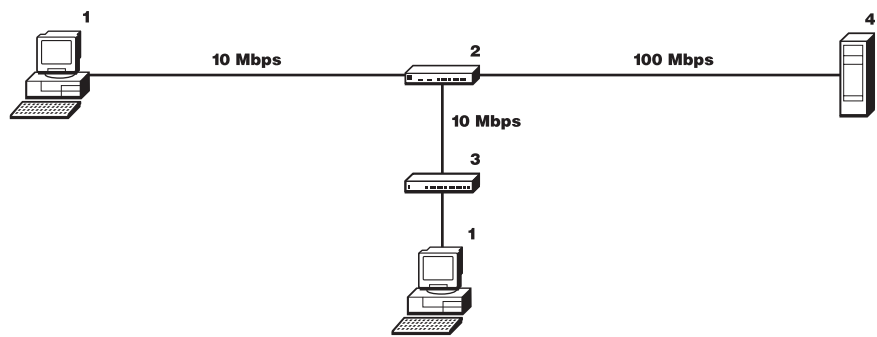
Positioning and Benefits

The IBM Ethernet Desktop Switch 8275 Model 324 offers end-to-end connectivity solutions for Ethernet networks. With its inexpensive standard 10/100 Mbps auto-sensing data transmission rate to the desktop, the 8275 has been engineered to meet the demands of small- and medium-range networking environments. While the 8275 Model 324 is affordably priced to offer 10/100 Mbps switched Ethernet connectivity to the desktop, it also provides the flexibility to offer the aggregation of 10-Mbps switches with 100-Mbps uplinks to increase bandwidth in small-to medium-sized networks.

Problem: Need for additional bandwidth and performance to the desktop.

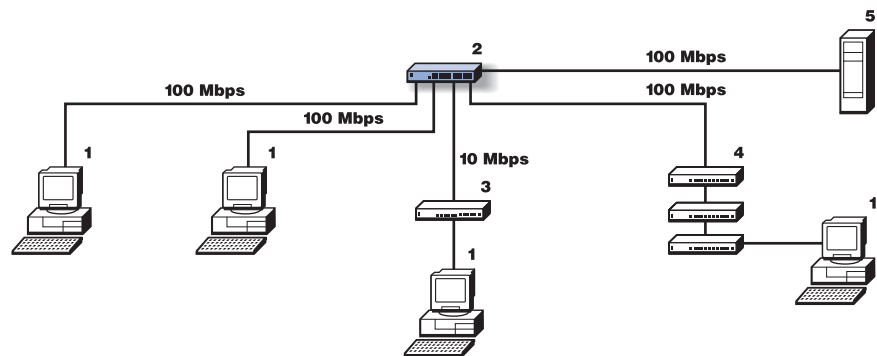
Environment: 10-Mbps switched or shared Ethernet networks requiring additional bandwidth to the server and desktop. Manageability becoming a requirement for the network. Adding new users with network growth.

- 1. End User
- 2. 10-Mbps Switch
- 3. 10-Mbps Hub
- 4. Server



Solution: Segment the LAN by connecting power users directly to the 8275-324 (offering switched 10/100 Mbps Ethernet to the desktop), and aggregating 10 Mbps switches or hubs (providing additional bandwidth and investment protection). The server or backbone connection gets the high-speed 100-Mbps links, improving the performance of the network. The 8275 Model 324 offers direct desktop connectivity for medium-to-large networks, while also offering aggregation or backbone 10/100 connectivity for small networks.

- 1. End User
- 2. IBM 8275 10/100 Desktop Switch Model 324
- 3. 10-Mbps Ethernet Switch
- 4. 10-Mbps Ethernet Stackable Hub
- 5. Server



Benefits:

- Affordable 10/100-Mbps switching to the desktop, while protecting customer investment in existing infrastructure.
- In all scenarios, network capacity and performance have been improved without changing building wiring, installing new adapters, or rewriting software.
- Remote management (ease-of-use) through web-based management.
- Price/performance benefits for Ethernet networks.
- SNMP and RMON support.

Product Overview

The IBM Fast Ethernet Desktop Switch 8275 Model 324 offers a low-end Ethernet switch solution while providing inexpensive high-performance switching capabilities. The 324 offers 24 ports helping drive 10/100 switching to the desktop. Port trunking capabilities provide aggregate bandwidth (up to 800 Mbps) between the switches.

High-performance switching capabilities

The high-performance 5-Gbps backplane provides 1.8-Mpps switching to the desktop, multiple port switch-to-switch trunking, IEEE 802.1D spanning tree, and a full set of network management facilities. The 324 offers Web-based management for easy remote management.

Management/RMON support

The Fast Ethernet Desktop Switch includes an EIA-232 port for configuration and management. The port can be managed through Telnet.

The IBM Fast Ethernet Desktop Switch supports the following standard MIBs:

- IETF SNMP MIB-II
- Bridge MIB
- Remote Monitoring MIBs
 - RMON MIB
 - Standard VLAN MIBs

Full-duplex transmission

Full-duplex is supported on all 10/100BASE-TX ports.

Support for VLANs

A virtual local area network (VLAN) is a related group of users who can communicate directly with one another and receive broadcasts from one another, yet may be geographically dispersed. On a network infrastructure built around switches, all end stations can communicate directly with one another and receive broadcasts from one another. In this type of network, VLANs are used when there is a need to control traffic patterns, to provide security and to control broadcast behavior.

With the IBM Fast Ethernet Desktop Switch, a VLAN is defined as a group of ports that are part of a single multicast domain. A broadcast packet received on a port in a particular VLAN will not be transmitted to ports that are not members of that VLAN. A VLAN must end at a router port and all traffic between VLANs must pass through a router.

Desktop switch solution

The Fast Ethernet Desktop Switch 8275 Model 324 provides inexpensive high-performing 10/100 switching to the desktop. It is positioned as a Desktop switch solution for all sizes of networks in organizations ranging from small and medium-sized businesses to large enterprises. The 324 can also be positioned as a small network backbone switch—aggregating the 8275 Model 113. This offers you a powerful and cost-effective solution for small and medium businesses. For the large enterprise, the Model 324 can be aggregated by the new IBM 8271 F12 or F24 switches (with gigabit uplinks to the backbone) providing additional functionality for larger networks.

IBM Fast Ethernet Desktop Switch 8275 Model 324 Specifications

Part number	30L6613: Model 324
Physical specifications	Width: 44 mm (1.74 in.) Depth: 264 mm (10.4 in.) Height: 63 mm (2.48 in.) Weight: 5.43 kg (12 lb.)
Operating environment	Temperature: 0° to 50°C (32° to 122°F) Relative humidity: 5% to 95% Electrical power: 90 to 240 V Frequency: 50 to 60 Hz
Installation	Can be mounted in a standard 19-inch rack or on a flat surface
Standards compliance	Electromagnetic Standards: FCC Class B (U.S.A.), VCCI Class A (Japan), ICES-003 Class A (Canada), EN55022 Class B (CISPR-22B) with shielded cables or Class A (CISPR-22A) with unshielded cables, Taiwan EMI (FCC A), Australia/New Zealand EMI (CISPR-22)
Warranty	1 year
Year 2000 ready	The IBM Fast Ethernet Desktop Switch 8275 is Year 2000 ready when used in accordance with its associated documentation and is capable of correctly processing, providing and receiving data within and between the 20th and 21st centuries, provided all other hardware, software, and/or firmware used with the product properly exchange accurate data with it.
ISO 9000	The IBM Fast Ethernet Desktop Switch 8275 was developed and is manufactured by IBM under a registered ISO 9000 quality management system.

Key Customer Benefits

- Provides a low-end Ethernet switch solution for small and medium-sized businesses
- Industry price and performance leader
- Completes the IBM Ethernet end-to-end solution
- Comes standard with twenty-four 10/100BASE-TX Ethernet ports
- Comes in a convenient desktop unit

Supplementary Information

The following sales tools are available for the IBM Fast Ethernet Desktop Switch 8275 Model 324:

- Specification sheet:
IBM Fast Ethernet Desktop Switch 8275 Model 324, G224-4579-0
- Information on the 8275 is available at:
www.networking.ibm.com