



# e-business Starter Network

## IBM Networking Solutions for Netfinity®

### A jump-start into the world of e-business

To succeed in today's mile-a-minute, ultracompetitive economy, organizations must be able to communicate quickly and efficiently with employees, customers, prospects and business partners. Employees especially require fast and easy access to corporate information, peripheral devices, such as printers and file servers, and the Internet. The solution is a network.

Small businesses have special network considerations. Their networking solutions must fit their budgets and be easy to install and maintain. In addition, the network solution must be flexible enough to grow with their businesses. Small companies are looking for a high degree of functionality in their network solutions at a reasonable cost.

The demands on a small business' network are just as critical as those of large enterprises. A network that's down hampers any company's responsiveness and cuts into its profitability. That's why IBM recently introduced its e-business Starter Network Solution for Netfinity. Tailored to meet the demanding needs of small businesses, this turnkey IBM solution provides the jump-start a company needs to deploy its first network at a reasonable cost.

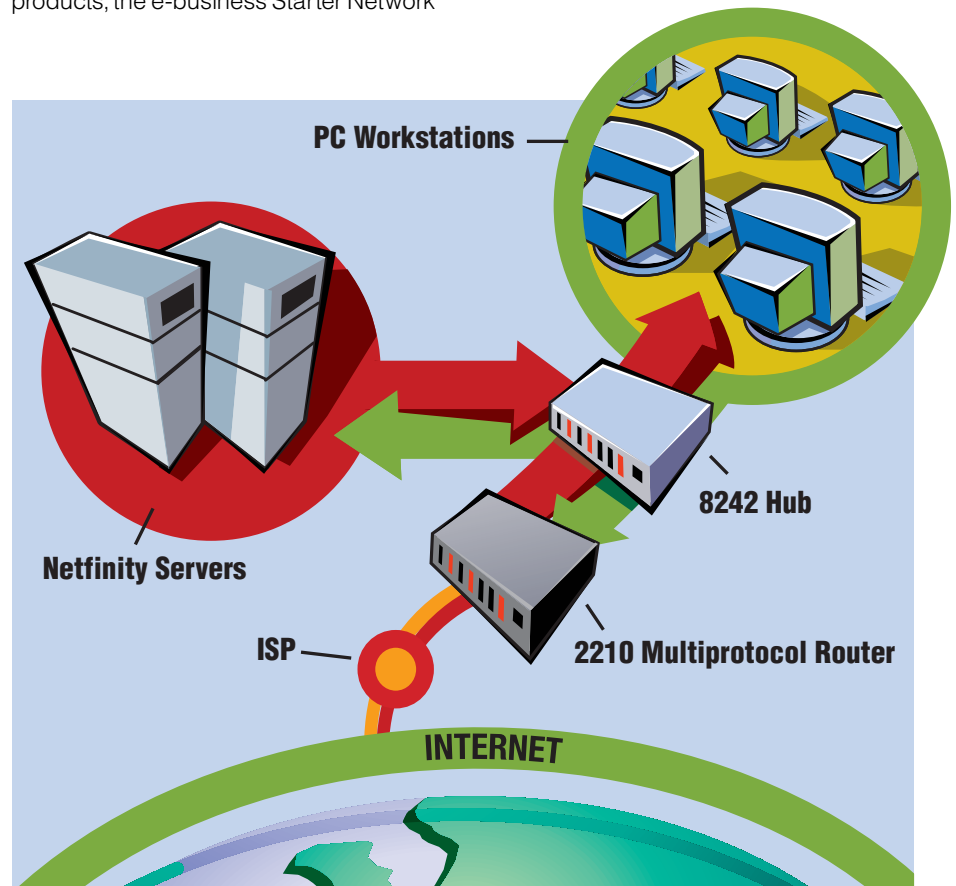
### An IBM end-to-end solution for small businesses

The IBM e-business Starter Network is an end-to-end networking solution developed specifically for small companies to easily enter the world of e-business. This affordable solution provides employees with access to e-mail, corporate data and the Internet. Plus, it provides companies with the scalability they need to add new users as they grow.

Built on IBM's industry-leading networking products, the e-business Starter Network

includes an IBM Netfinity server, IBM's 2210 Nways® Multiprotocol Router, 10/100 EtherJet PCI Adapter and 8242 Ethernet Desktop Hub, and Lotus® Domino™ software. This tested, integrated networking solution is scalable, affordable, easy to use and simple to manage. Because it's an IBM end-to-end solution, support and service are just a single phone call away.

The e-business Starter Network Solution for Netfinity is available through IBM Business Partners.



e-business Starter Network Solution for Netfinity



## Reliability, performance and ease-of-use

Reliability, performance and ease-of-use are the cornerstones of this IBM end-to-end solution. The specific components include:

- IBM Netfinity servers equipped with 10/100 EtherJet PCI Adapters for Ethernet: These award-winning servers provide customers with the reliability, performance and ease-of-use they require to manage their networked business systems. Based on industry-standard intelligent processors, Netfinity servers provide a rock-solid foundation for the most demanding networks.
- IBM 2210 Nways Multiprotocol Routers: IBM's 2210 Routers provide connectivity and protocol support to work with everything from a two-client LAN to a 1000-user WAN, enabling cost-effective network implementation across a range of remote locations, branch offices and regional sites. They also offer Virtual Private Network support with integrated IP Security Protocol and Layer 2 Tunneling Protocol, ensuring high levels of security for multiprotocol traffic across the Internet, intranets or extranets.
- IBM 8242 Ethernet Desktop Hub: Allows companies to create an affordable Ethernet LAN quickly wherever it is needed. It is an ideal solution for a small

business' first network, offering many of the features, problem determination aids and reliability of IBM's large network hubs, while retaining the operational simplicity of an entry-level hub.

- Lotus Domino: This applications and messaging server software features an integrated set of services that enables companies to create security-enhanced, interactive business solutions for the Internet and corporate intranets. Domino provides fast access to applications and data from any Web browser or Lotus Notes™ client. It also enables customers to quickly deploy e-business solutions that integrate legacy data and applications.

## Helps small businesses compete and grow

Instant communication and access to timely information are requirements for success in today's marketplace. With IBM's e-business Starter Network Solution for Netfinity, small businesses now can increase productivity and profitability, identify and seize new business opportunities, and enhance customer relationships. This complete IBM solution makes it easy for today's small businesses to harness the power of the Internet to sharpen their competitive edge by getting closer to customers and working smarter with suppliers.

## For more information

To learn more about IBM's end-to-end networking solutions, products, services and support, visit us at:  
[www.ibm.com/networking](http://www.ibm.com/networking)



© International Business Machines Corporation 1998

IBM Corporation  
Department J7UB  
3039 Cornwallis Road  
RTP NC 27709  
USA

Printed in the United States of America  
08-98  
All Rights Reserved

References in this publication to IBM products or services do not imply that IBM intends to make them available in all countries in which IBM operates.

Copying or downloading the images contained in this document is expressly prohibited without the written consent of IBM.

IBM, the e-business logo, Netfinity and Nways are trademarks or registered trademarks of International Business Machines Corporation.

Lotus Domino and Lotus Notes are trademarks or registered trademarks of Lotus Development Corporation.

Other company, product and service names may be trademarks or service marks of other companies.



Printed on recycled paper.

---

### IBM e-business Starter Network Solution for Netfinity at a glance

---

#### Products Included:

- Netfinity servers (models 3000, 3500)
- 10/100 EtherJet PCI Adapters for Ethernet
- 8242 Ethernet Desktop Hub
- 2210 Nways Multiprotocol Router — Model IU4
- Lotus Domino applications and messaging server software

---

#### Business Benefits:

- Enhances communication between employees, customers, prospects and business partners
  - Helps increase productivity and improve profitability
  - Offers low cost of ownership
  - Provides flexibility and scalability to support continued company growth
  - Ensures ease of installation, use and maintenance through integrated and tested components
  - Provides single source of support through IBM
- 



G224-4580-00