

The ready-to-go ASCII solution!

5308 ASCII-to-5250 Connection

- **Long-distance phone-call savings when multiple ASCII devices in one city dial in locally to an IBM 5394 or 5494 Remote Controller, which can then make one long-distance call to the remote host**
- **ASCII terminals can act as nonprogrammable workstations in the configuration of 5394 and 5494 Remote Controllers**
- **Shared addressing to display up to four sessions on each ASCII terminal**
- **A consistent look and feel with displays attached to the ASCII workstation controller**
- **A low-cost, 2-port model supporting up to 2 ASCII devices (5308-002)**
- **A 2-port model with two internal 28.8-Kbps modems (U.S. and Canada only, 5308-0M2)**
- **A 7-port model supporting up to seven ASCII devices (5308-007)**
- **A 2- to 7-port upgrade**
- **The 5308 PC Terminal Program at no extra charge**

The IBM 5308 ASCII-to-5250 Connection is the link between low-cost ASCII displays, or PCs emulating ASCII displays, and IBM 5394 and 5494 Remote Controllers, or AS/400® or System/3x hosts. The 5308 attaches to the 5394 and 5494 Remote Controllers or host system via the twinaxial workstation controller port.

Product Overview

The 5308 is available in models that support up to two or seven ASCII displays. Each ASCII display can use up to four simultaneous sessions. To toggle between sessions, simply press the system-defined hot-key sequence. The 5308 takes advantage of the shared-addressing feature of OS/400® V3R1, and higher releases, to provide this unique, advanced feature.

The 5308 Model 0M2 makes remote ASCII device connection especially easy and cost-effective as it includes two 28.8-Kbps internal modems. Since no external modems or cables are required, connection is as simple as plugging in up to two RJ-11 phone lines and one twinaxial connection to the host.

The 5308 provides excellent performance to end users since it supports line speeds of up to 115.2 Kbps. Users attached at these high line speeds receive excellent response time, leading to higher productivity. This high line speed is most advantageous to locally attached devices, as remote devices are subject to the maximum speed of their modems.

The 5308 supports ASCII devices in campus installations since it can be located over 3353 m (11000 ft) from the 5394, 5494 or host system. Since the 5308 connects to the host using the twinaxial interface, it supports up to 1524 m (5000 ft) of direct twinaxial cable attachment, or over 3353 m (11000 ft) using a combination of UTP and optical fiber cabling when used with the 6299 Hub for Midrange Systems. Using this feature, up to seven remote ASCII displays can be connected without using dial-in or leased lines.

Key prerequisites

The 5308 requires at least one ASCII device such as:

- A supported ASCII display
- A PC emulating a supported ASCII display
- A PC running the PC Terminal Program provided with the 5308 ASCII to 5250 Connection

The 5308 also requires an available twinaxial workstation controller port on a 5394 or 5494 Remote Controller, AS/400 or System/3x computer.

Hardware requirements

The 5308 requires an available twinaxial workstation controller port on one of the following:

- IBM 5394 or 5494 Remote Controller
- AS/400 (any model with a twinaxial workstation controller) System/3x (any model)

The shared-addressing feature requires:

- Local attachment to an AS/400 system with a 2661, 6050, 9146 or 9148 Twinaxial Workstation Controller
- Remote attachment to the AS/400 system using a 5494 Remote Control Unit R 3.0 or higher

The following devices are supported for local or remote ASCII attachment:

- IBM 3153 ASCII Display emulating an IBM 3151, a DEC VT-100 or a Wyse WY50/WY60
- IBM 3151 ASCII Display
- DEC VT-220 ASCII Display
- Wyse WY50/WY60 ASCII Display

- Any terminals emulating the following displays:

- IBM 3151 ASCII Display
- DEC VT-100/102/220 ASCII Display
- Wyse WY50/WY60 ASCII Display

- A PC with the following requirements:

- 5308 ASCII to 5250 Connection PC Terminal Program or an ASCII emulation program emulating one of the terminals listed above
- 101- or 102-key keyboard
- VGA display
- 386 or higher processor

Software requirements

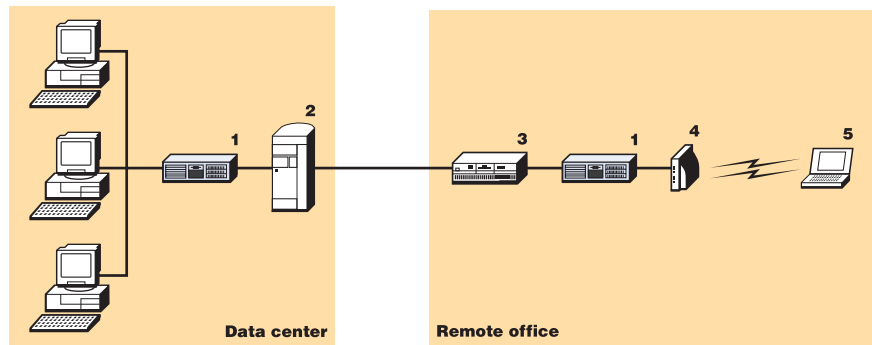
The 5308 PC Terminal Program requires one of the following operating systems:

- IBM or MS-DOS V 5.0 or higher
- Microsoft® Windows® 3.1 or higher (DOS box)
- OS/2® 2.11 (DOS full-screen)
- Microsoft Windows NT®
- The shared-addressing feature requires attachment to an AS/400 system running OS/400 V3R1 or higher, with the latest PTF level installed

Limitations

- The 5308 does not support printers attached to either ASCII devices or PCs emulating ASCII terminals.
- Some older terminals requiring null character padding are not supported.

1. IBM 5308 ASCII to 5250 Connection
2. AS/400 system
3. Remote controller
4. Modem
5. Remote users



5308 ASCII-to-5250 Connection Specifications

Description	Machine Type	Model	FC
2-Port ASCII to 5250 Connection	5308	002	
2-Port ASCII to 5250 with Modem	5308	0M2	
7-Port ASCII to 5250 Connection	5308	007	
2-to-7 port upgrade	5308	002 (only)	2228
UTP balun RJ-45 pins 4 & 5	5308	002, 0M2, 007	5087
Data connector cable	5308	002, 0M2, 007	1043

Physical specifications

Models 002, 0M2, 007

Width: 395 mm (15.5 in.)
 Depth: 415 mm (16.3 in.)
 Height: 150 mm (5.9 in.)
 Weight: 10.4 kg (23 lb)

Operating environment

Temperature: 10° to 40.6° C (50° to 105° F)
 Relative Humidity: 8% to 80% (non-condensing)
 Calorific value: 1283 BTU
 Electrical power: 0.375 kVA
 Capacity of exhaust: 113m³/min. (40ft³/min.)
 Noise level: 40dBA
 Leakage current: 0.7 mA
 Starting current: 40 A

Supplementary Information

Information on the IBM 5308 ASCII to 5250 Connection and other AS/400 Connectivity solutions is available at:
www.networking.ibm.com/525/525home.html