

Networking Solutions for AS/400

Networking Solutions for AS/400® offer attractively priced solutions for e-business needs. These solutions are fully integrated and tested configurations of IBM networking hardware and AS/400 server hardware and software. They are easy to install and integrate into new or existing installations. The highly functional and scalable products contained within these solutions provide investment protection as networking needs grow.

The following AS/400 solutions are described within this section:

1. Domino e-mail for AS/400 solution
2. Domino Web server for AS/400 solution
3. Ready-to-run R 3 for AS/400 solution
4. AS/400e LAN performance network solution

Domino E-mail for AS/400

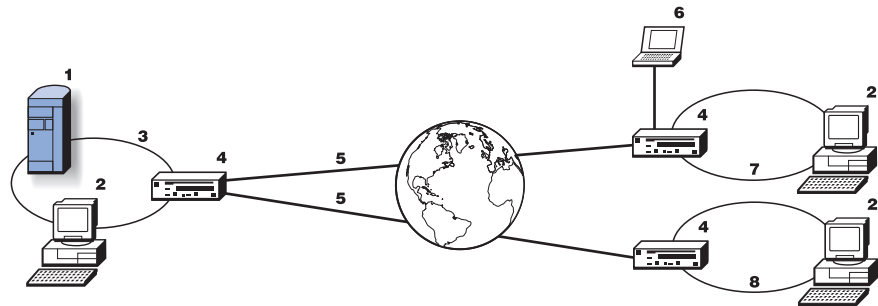
Problem: Linking branch offices and remote workers securely and reliably without jeopardizing existing network investments

Environment: A company with mushrooming network traffic and multiple location sites with the need for remote user and Internet access.

Solution: IBM's Domino e-mail solution combines IBM's AS/400 servers, Domino software and 2210 Multiprotocol Routers delivers a solution that provides scalable, high-performance interconnectivity and reduces costs.

The award-winning 2210 enables virtual private networks (VPNs) to provide secure access to protected data such as e-mail or critical corporate information among multiple offices and remote users.

- 1. AS/400e Server with Lotus Domino
- 2. End user
- 3. Enterprise intranet
- 4. 2210 router
- 5. IP connection
- 6. Remote end user
- 7. Branch LAN
- 8. Supplier LAN



Products used in implementation

- AS/400e Server Models 170-xxx
- IBM 2210 Multiprotocol Router Model 12E for Ethernet or Model 12T for Token Ring
- Lotus® Domino

Benefits

- Increased connectivity
- Secure connections
- Lower WAN costs
- Secure Internet access

Domino Web Server for AS/400

Problem: Need for Web sites that provide more than just information

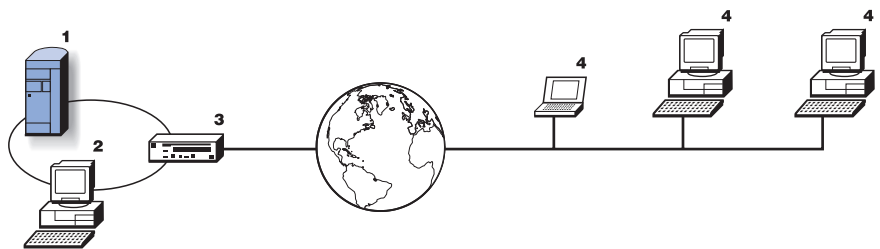
Environment: A company with a Web site that will be used for handling business transactions, tracking shipments and managing inventory

Solution: IBM's Domino Web server solution combines IBM's AS/400 servers, Domino software, 2210 Multiprotocol Routers and server network adapters to meet customers' needs.

The award-winning 2210 provides a powerful T1/E1 WAN connection for quick, dependable Internet access. This high-bandwidth connection delivers the capacity needed by a Web server to handle a company's e-commerce transactions.

The Network Dispatcher feature balances the traffic load across multiple servers.

- 1. AS/400e Server with Lotus Domino
- 2. Local end-user
- 3. 2210 router
- 4. Remote Web user



Products used in implementation

- AS/400e Servers Models 170-xxx
- IBM 2210 Multiprotocol Router Model 12E for Ethernet or Model 12T for Token Ring
- Lotus Domino

Benefits

- Extended customer reach
- Reduced costs
- Scalable, high-performance hardware and software
- High-bandwidth Internet connectivity

Ready-to-Run R 3 for AS/400

Problem: Need for enterprise resource planning (ERP)

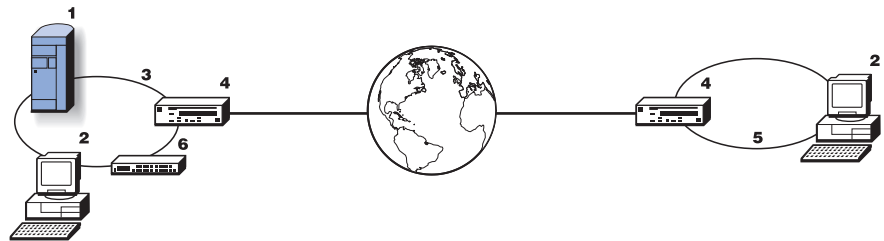
Environment: A company in need SAP test and production environments for ERP

Solution: IBM's Ready-to-Run R 3 for AS/400 solution allows customers to run SAP's Release 3 test and production environments on a single server. The software comes pre-loaded on a choice of AS/400e Servers.

Ready-to-Run for AS/400e is an all-inclusive package that includes AS/400 and networking hardware, an IBM personal computer, SAP R 3 software and IBM peripheral products and services. IBM provides the AS/400e Server, tape drive, networking hardware and pre-configuration of R 3. SAP provides the R 3 software and support and implementation partner, J.J. Crony and Associates, provides peripherals, training and support.

IBM and our partners are making it easier for businesses to deploy R 3 fast while reducing initial start-up and ongoing maintenance and management costs.

1. AS/400 with SAPR3 software
2. End user
3. Enterprise LAN
4. 2210 router
5. LAN with SAPOSS
6. 8242 or 8245 Ethernet Hub or 8271 or 8275 Ethernet Switch



Products used in implementation

- AS/400 Model 170-2176, Model S20-2165, Model S20-2166, S30-2259, S30-2260 and S40-2161
- SAP R 3 software (preloaded)
- IBM 8242 Ethernet Hub (unmanaged), IBM 8245 Ethernet Hub (managed), IBM 8275 10-Mbps Ethernet Switch or IBM 8271 10/100-Mbps Ethernet Switch
- 2210 Router Model 1U4 or 12E for Ethernet
- R 3 administrative PC (pre-configured), network configuration and high-speed IBM printer from J.J. Crony and Associates, SAP implementation partner

Benefits

- SAP's R 3 test and production environments run on the same server
- Reduced initial start-up costs
- Reduced ongoing maintenance and management costs
- Quick, dependable remote site connection through the 2210
- Low-cost connection to the new LAN through the Ethernet hubs and switches
- Scalability for future growth needs

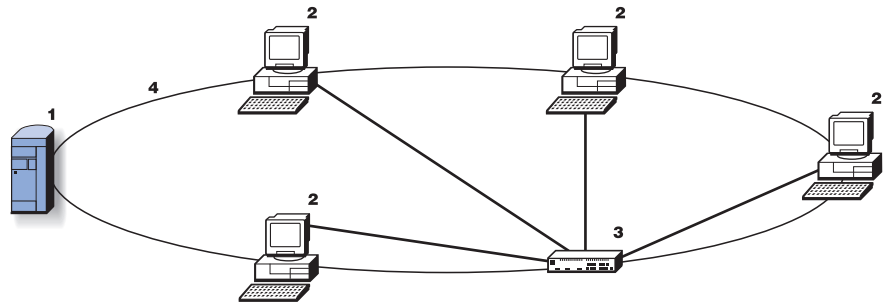
Problem: Need for increased LAN performance

Environment: A company using graphic, data intensive applications that are placing more demands on existing servers and networks, or whose growth is causing delays while accessing data.

Solution: IBM's AS/400e LAN Performance solution combines IBM's AS/400e servers, Domino software and 8275 or 8271 Ethernet Switches to meet customers' needs.

The 8271 and 8275 Ethernet Switches provide a wide range of bandwidth, price and backbone connection options. These Ethernet switch connections will deliver the data capacity needed to the end users at a very affordable price.

1. AS/400e Server with Lotus Domino
2. End user
3. 8271 or 8275 Ethernet Switch
4. High-performance network



Products used in implementation

- AS/400e Server Models 170-xxx
- IBM 8275 Ethernet Switch (managed) or IBM 8271 Ethernet Switch (with 10/100 autosense Ethernet)
- Lotus Domino

Benefits

- High bandwidth data connectivity to each desktop
- Easy installation
- Scalable, high-performance hardware and software
- Wide range of bandwidth, price and backbone connection options