

Networking Solutions for Netfinity

Networking Solutions for Netfinity® offer attractively priced solutions for e-business needs. These solutions are fully integrated and tested configurations of IBM networking hardware and Netfinity server hardware and software. They are easy to install and integrate into new or existing installations. The highly functional and scalable products contained within these solutions provide investment protection as networking needs grow.

The following Netfinity solutions are described in this section:

1. Netfinity Multi-site connectivity solution
2. Netfinity Web hosting solution
3. Netfinity e-business starter network solution
4. Netfinity LAN performance network solution

Multi-site Connectivity

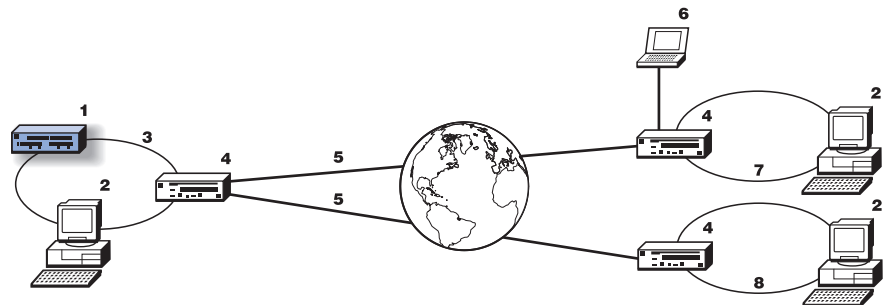
Problem: Linking branch offices and remote workers securely and reliably without jeopardizing existing network investments

Environment: A company with mushrooming network traffic and multiple location sites with the need for remote user and Internet access.

Solution: IBM's Netfinity Multi-site connectivity solution combines IBM's Netfinity servers, Domino software, 2210 Multiprotocol Routers and server network adapters delivers a solution that provides scalable, high-performance interconnectivity and reduces costs.

The award-winning 2210 enables virtual private networks (VPNs) to provide secure access to protected data such as e-mail or critical corporate information among multiple offices and remote users.

- 1. Netfinity Server with Lotus Domino
- 2. End user
- 3. Enterprise intranet
- 4. 2210 router
- 5. IP connection
- 6. Remote end user
- 7. Branch LAN
- 8. Supplier LAN



Products used in implementation

- Netfinity Servers Model 3000, Model 3500, Model 5500 and Model 7000 with 10/100 Fault-Tolerant Adapters or EtherJet 10/100 PCI Adapters for Ethernet or 16-Mbps Token-Ring Adapters for Token Ring
- IBM 2210 Multiprotocol Router Model 12E for Ethernet or Model 12T for Token Ring
- Lotus® Domino

Benefits

- Increased connectivity
- Secure connections
- Lower WAN costs
- Secure Internet access

Problem: Need for Web sites that provide more than just information

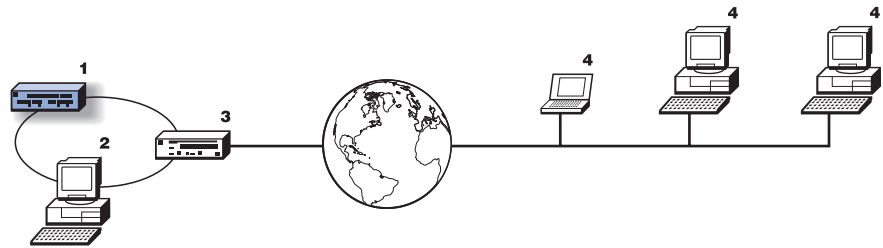
Environment: A company with a Web site that will be used for handling business transactions, tracking shipments and managing inventory

Solution: IBM's Netfinity Web hosting solution combines IBM's Netfinity servers, Domino software, 2210 Multiprotocol Routers and server network adapters to meet customers' needs for advanced e-business capability.

The award-winning 2210 provides a powerful T1/E1 WAN connection for quick, dependable Internet access. This high-bandwidth connection delivers the capacity needed by a Web server to handle a company's e-commerce transactions.

The Network Dispatcher feature balances server traffic across multiple servers.

1. Netfinity Server with Lotus Domino
2. Web host computer
3. 2210 router
4. Web user



Products used in implementation

- Netfinity Servers Model 3000, Model 3500, Model 5500 and Model 7000 with 10/100 Fault-Tolerant Adapters or EtherJet 10/100 PCI Adapters for Ethernet or 16-Mbps Token-Ring Adapters for Token Ring
- IBM 2210 Multiprotocol Router Model 12E for Ethernet or Model 12T for Token Ring
- Lotus Domino

Benefits

- Extended customer reach
- Reduced costs
- Scalable, high-performance hardware and software
- High-bandwidth Internet connectivity

e-business Starter Network

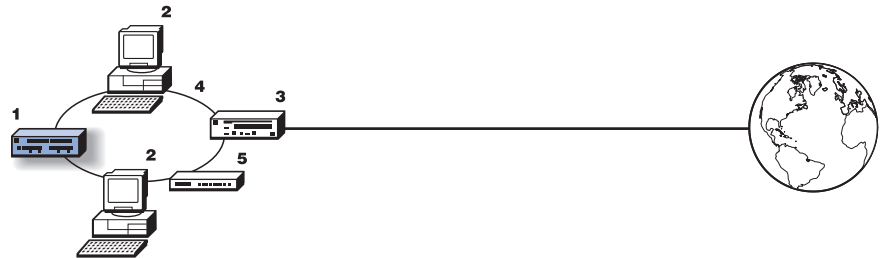
Problem: Need for an e-business starter network

Environment: A company installing its first server and interconnecting users to provide access to e-mail, corporate data and the Internet.

Solution: IBM's Netfinity e-business starter solution combines IBM's Netfinity servers, Domino software, 2210 Multiprotocol Routers, 8242 Ethernet Hubs and server network adapters to provide connectivity.

The award-winning 2210 provides Internet access or connectivity to other offices. the new 8242 Ethernet Hub provides a low-cost means to attach users to the new LAN.

1. Netfinity with Lotus Domino
2. End users
3. 2210 router
4. Starter network
5. 8242 Ethernet Hub



Products used in implementation

- Netfinity Servers Model 3000 and Model 3500 with EtherJet 10/100 PCI Adapters for Ethernet
- IBM 8242 Ethernet Hub (unmanaged)
- IBM 2210 Multiprotocol Router Model 14U for Ethernet
- Lotus Domino

Benefits

- Low cost support for today's e-business applications
- Scalable, high-performance hardware and software
- High-bandwidth Internet connectivity

LAN Performance Network

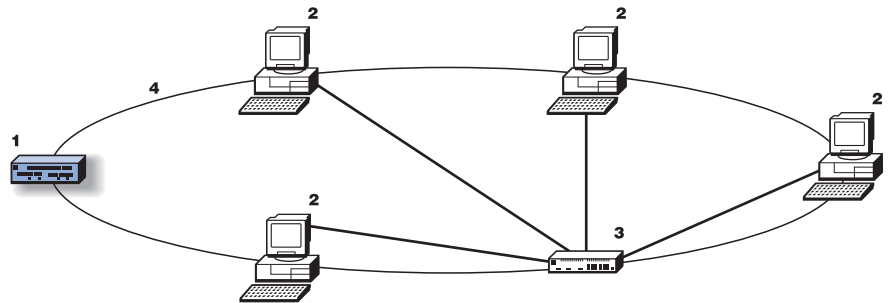
Problem: Need for increased LAN performance

Environment: A company using graphic, data intensive applications that are placing more demands on existing servers and networks, or whose user growth is causing delays while accessing data.

Solution: IBM's Netfinity LAN performance solution combines IBM's Netfinity servers, Domino software, 8275 or 8271 Ethernet Switches and server network adapters to meet customers' needs.

The 8271 and 8275 Ethernet Switches provide a wide range of bandwidth, price and backbone connection options. These Ethernet switch connections will deliver the data capacity needed to the end users at a very affordable price.

1. Netfinity Server with Lotus Domino
2. End user
3. 8271 or 8275 Ethernet Switch
4. High-performance network



Products used in implementation

- Netfinity Servers Model 3000, Model 3500, Model 5500 and Model 7000 with 10/100 Fault-Tolerant Adapters or EtherJet 10/100 PCI Adapters for Ethernet
- IBM 8275 Ethernet Switch (managed) or IBM 8271 Ethernet Switch (with 10/100 autosense Ethernet)
- Lotus Domino

Benefits

- High bandwidth data connectivity to each desktop
- Easy installation
- Scalable, high-performance hardware and software
- Wide range of bandwidth, price and backbone connection options