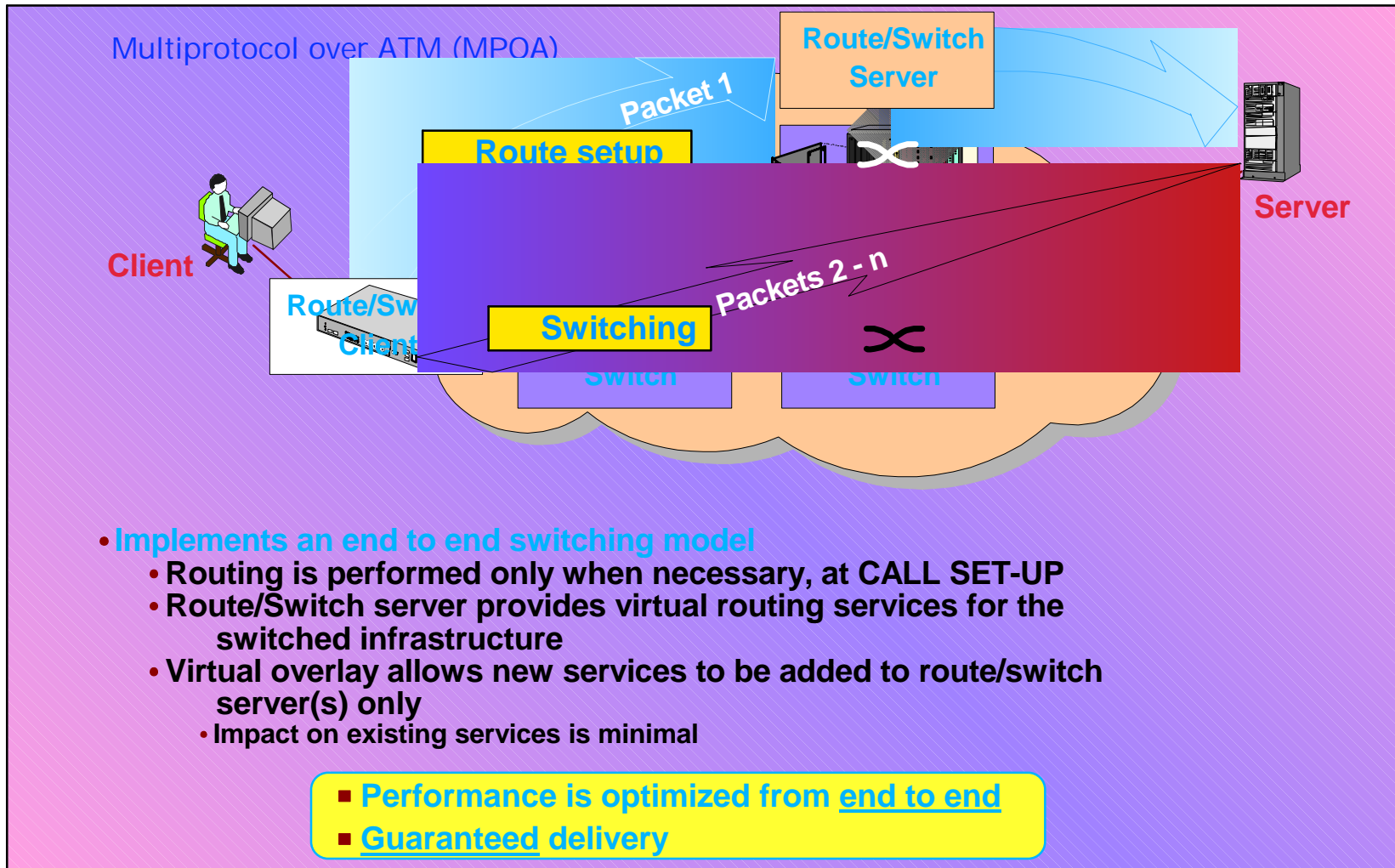


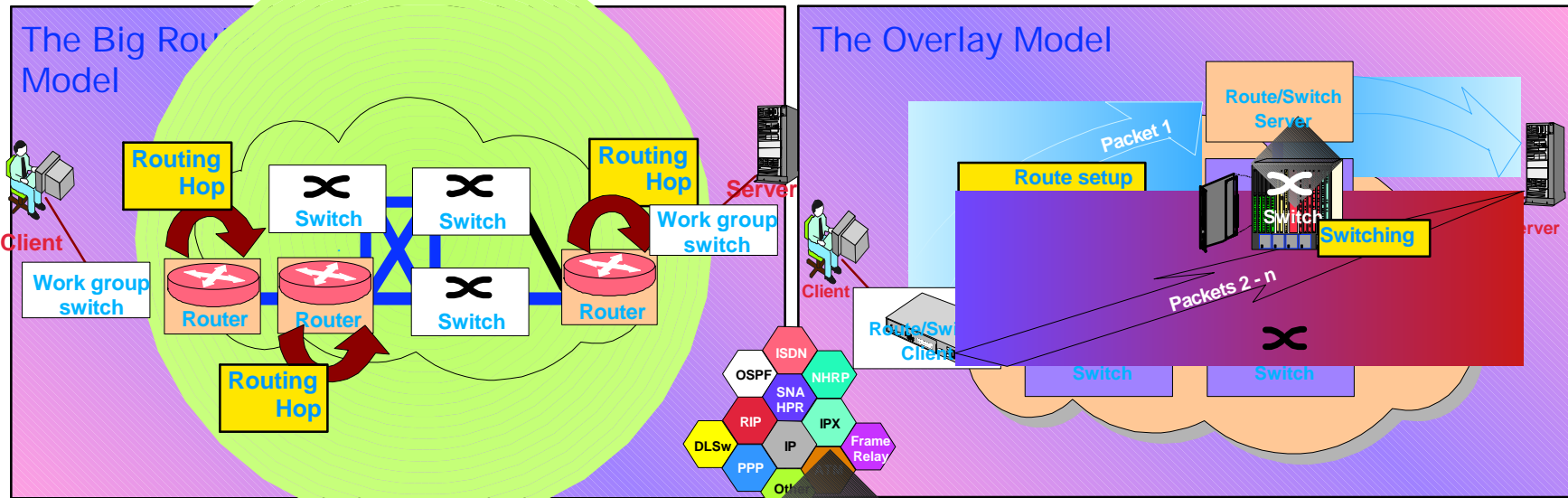
# The Overlay Model



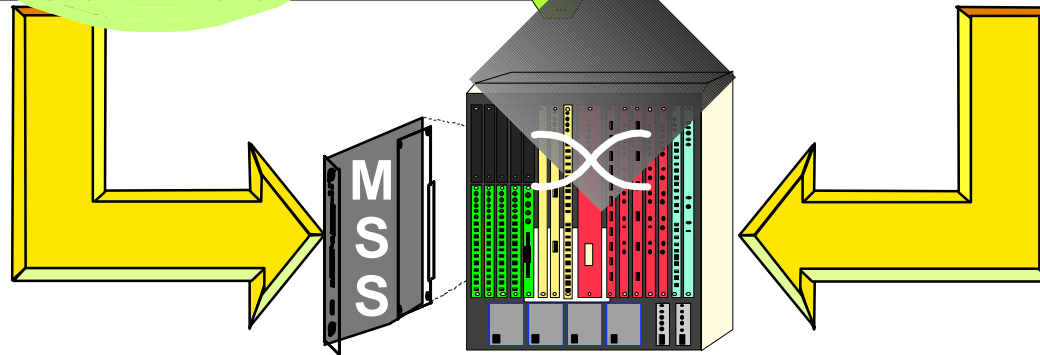


NHD

# Enabling Both Worlds



- Chassis-based high speed switch
  - ATM switching
  - Layer 3 routing



- Interfaces:
  - LAN
    - Ethernet 10/100
    - FDDI
    - ATM OC3/OC12
  - WAN
    - T1/E1
    - T3/E3
    - Frame relay

• Common implementation allows flexible network migration and support for all traffic flows

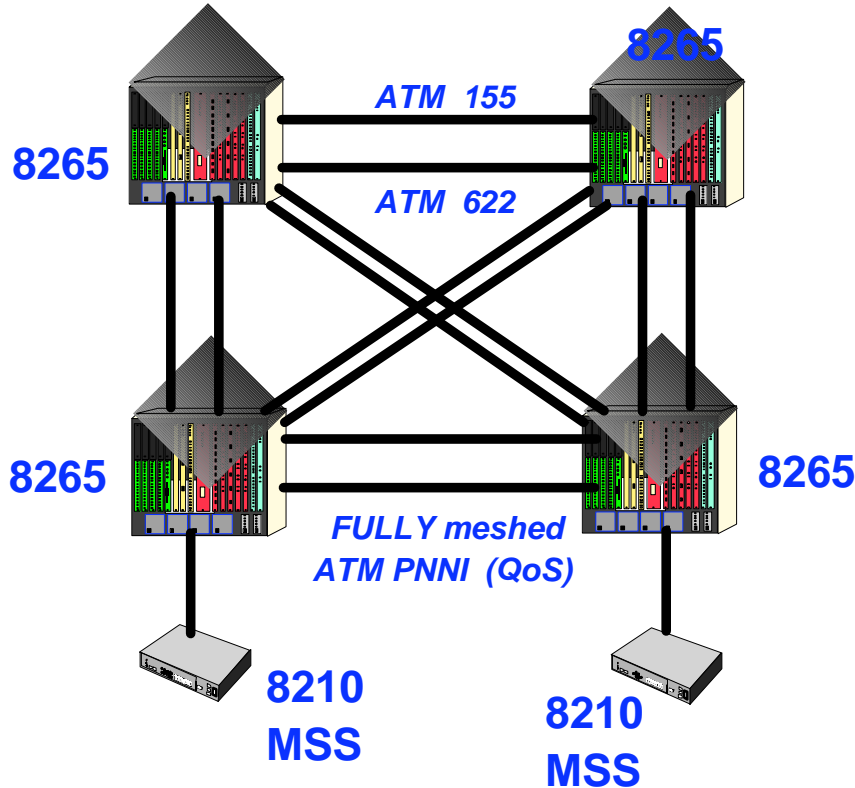
## 4  
&& 6



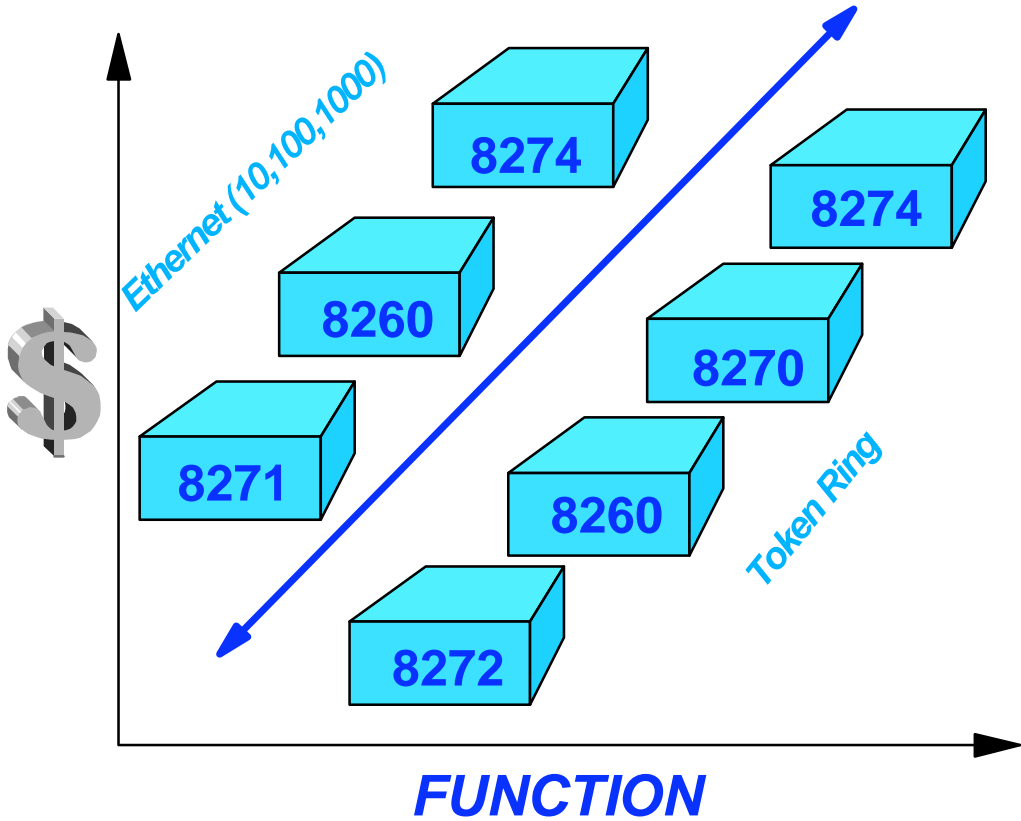
# CAMPUS TRANSPORT SERVICES

Legacy LAN Access ,  
and ATM Backbone for  
QoS

## CELL BACKBONE



## FRAME ACCESS



## 5  
&& 7



# IBM's MSS including MPOA

MPOA

MultiProtocol Over ATM

INDUSTRY LEADERSHIP

SEARCH

**NHRP**

BUSINESS VALUE

Scalability

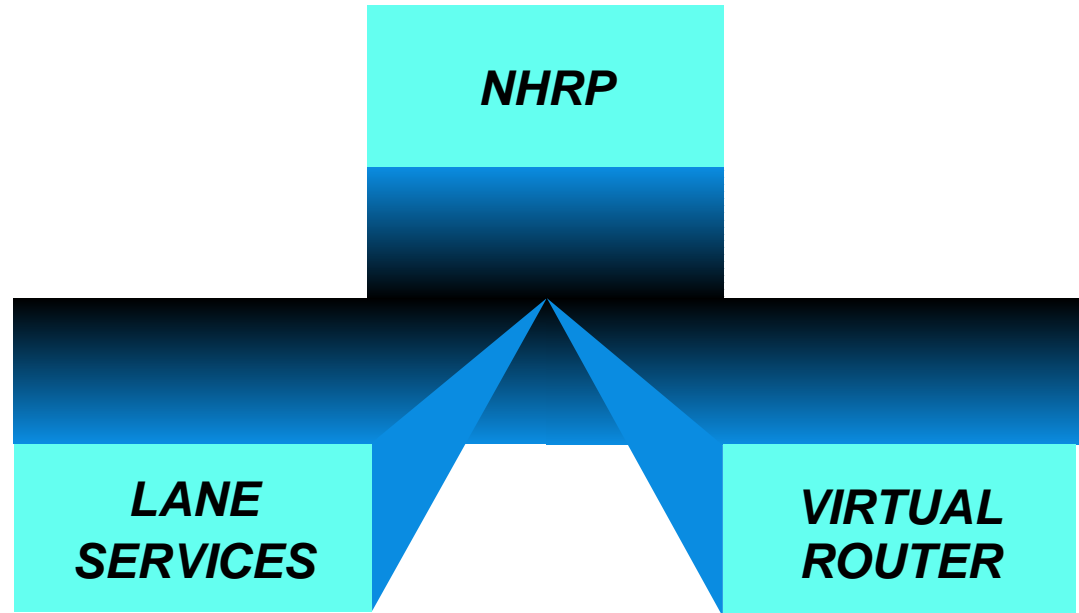
Performance

IBM's Approach

Standards

Value Added Extensions

Common Code



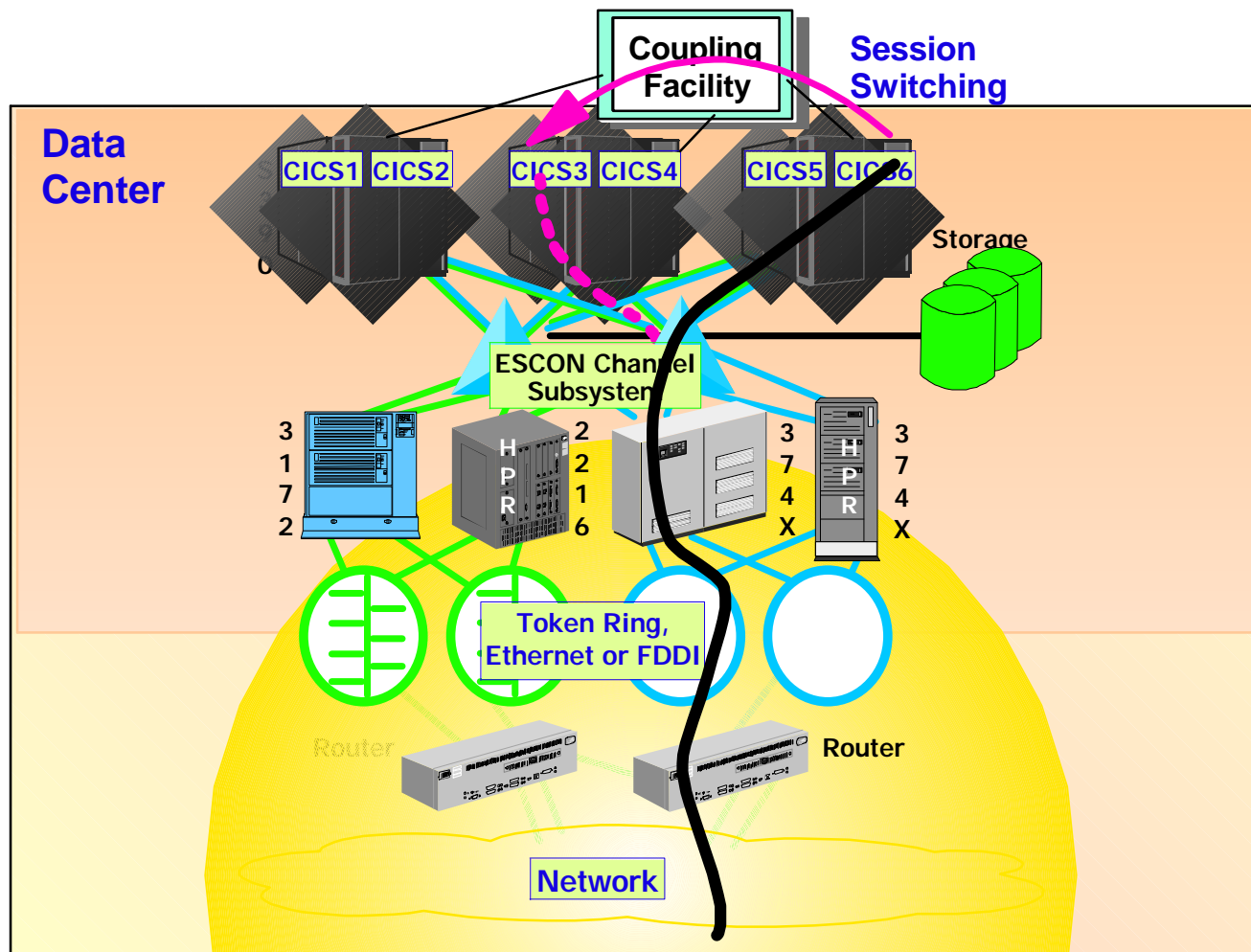
LEGACY ACCESS

ROUTING ONCE



NHD

# Parallel Sysplex Overview

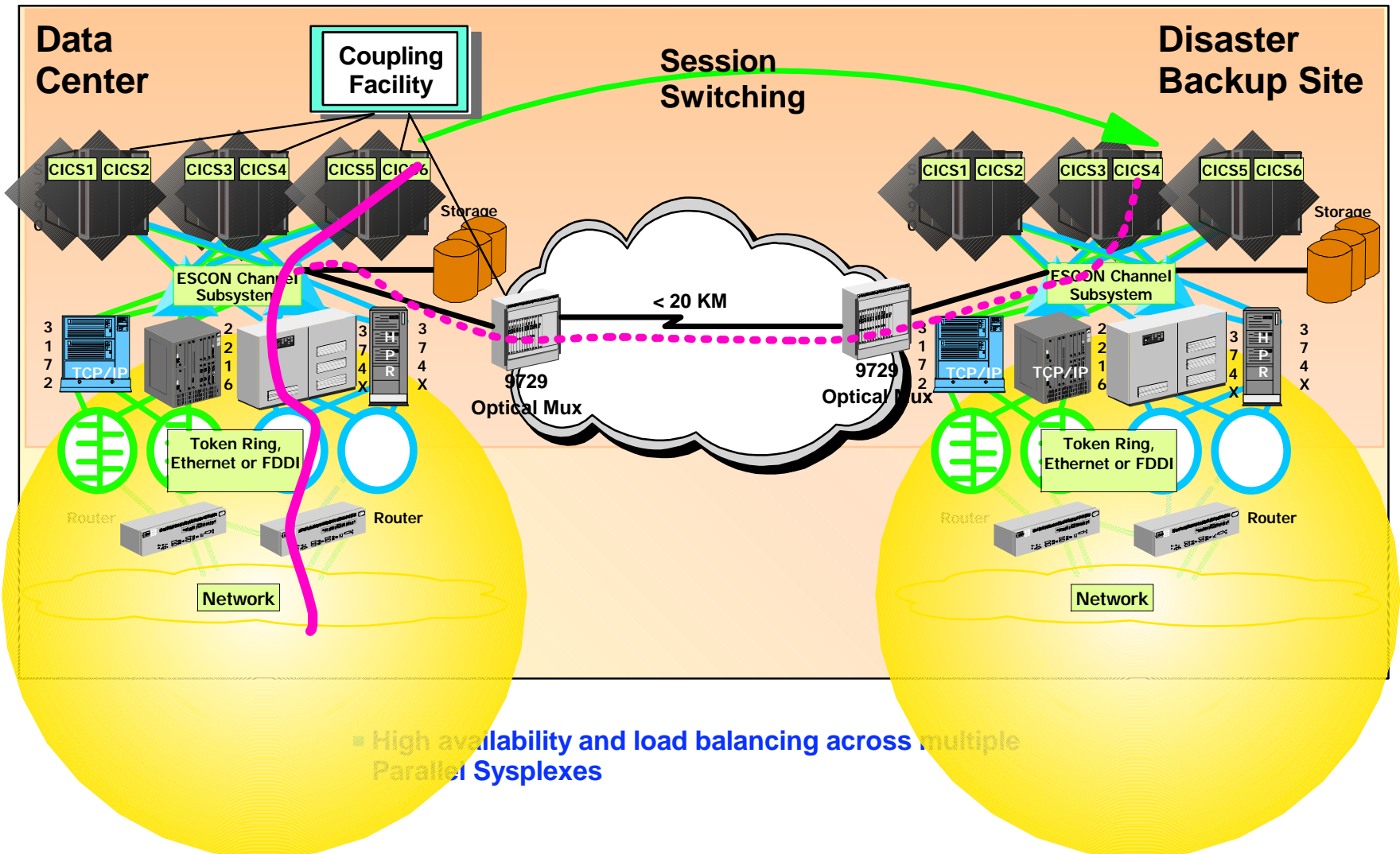


- High availability and load balancing with HPR and Sysplex
- High performance channel connectivity for SNA and IP with MPC+



NHD

# Creating a Virtual Sysplex

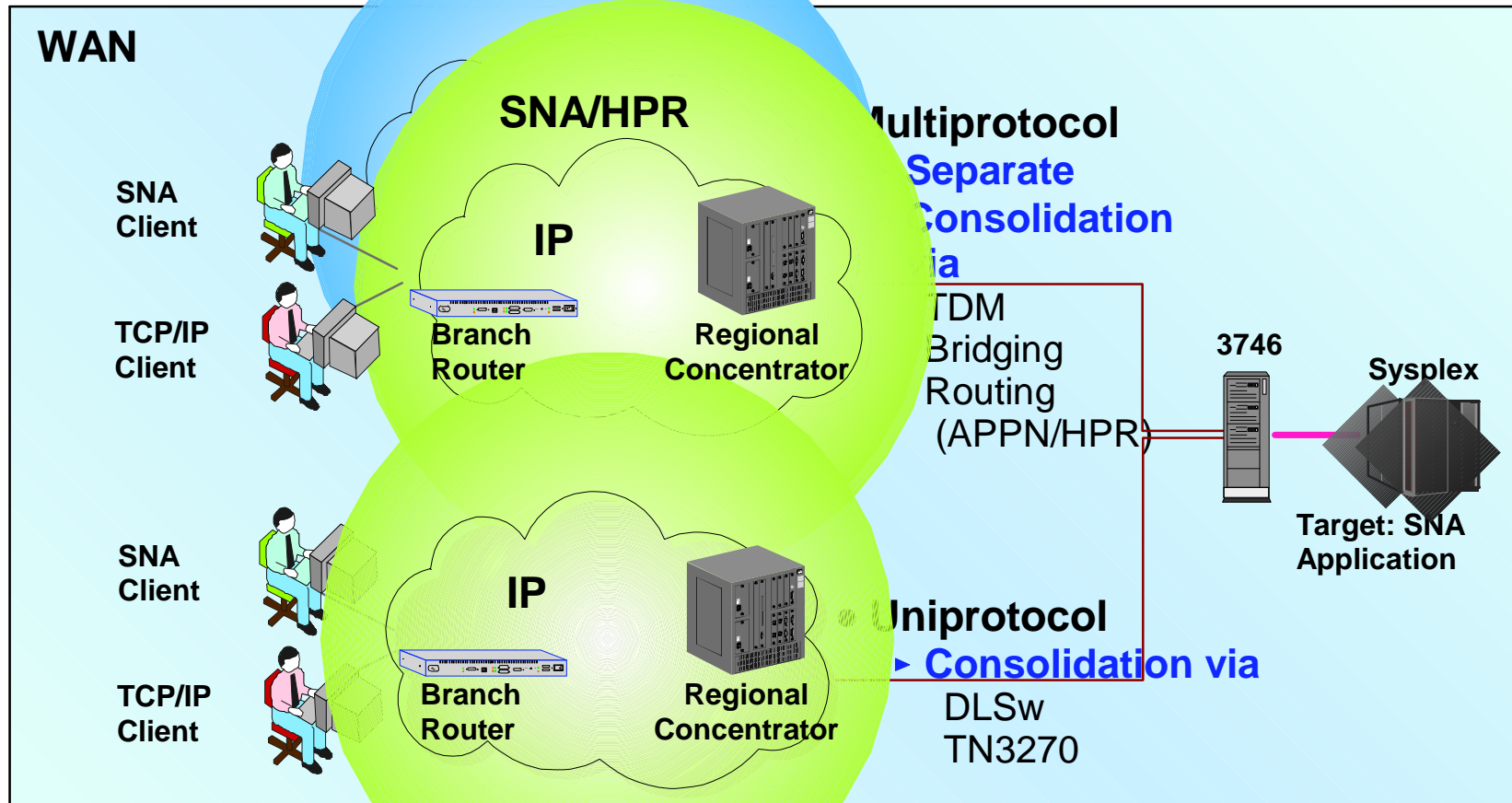




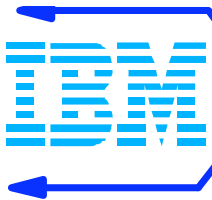


**NHD**

# WAN: Multiprotocol or Uniprotocol?

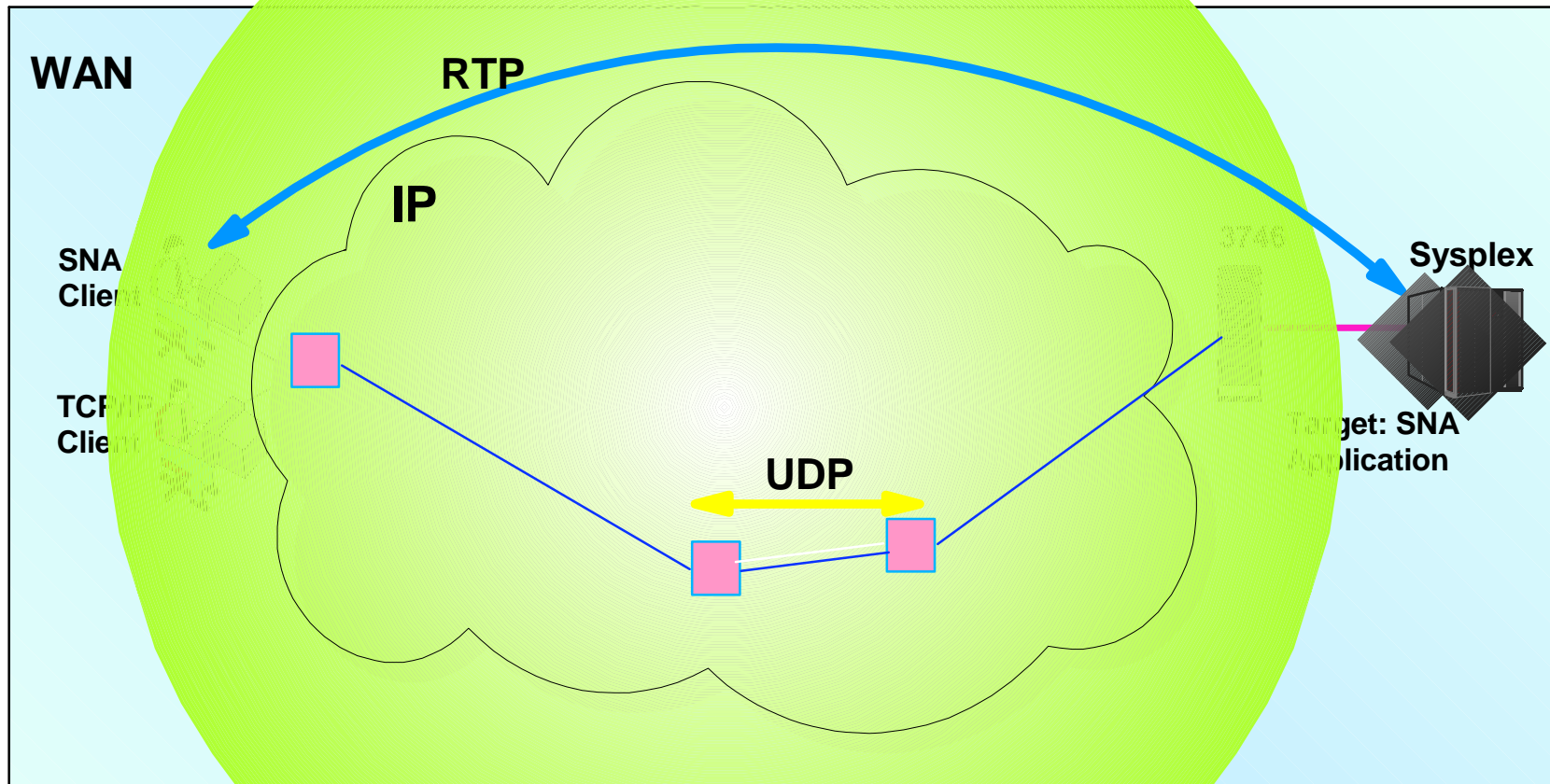


- Requirements:
- Any to any transport
- Nonstop availability
- Controllable service levels



**NHD**

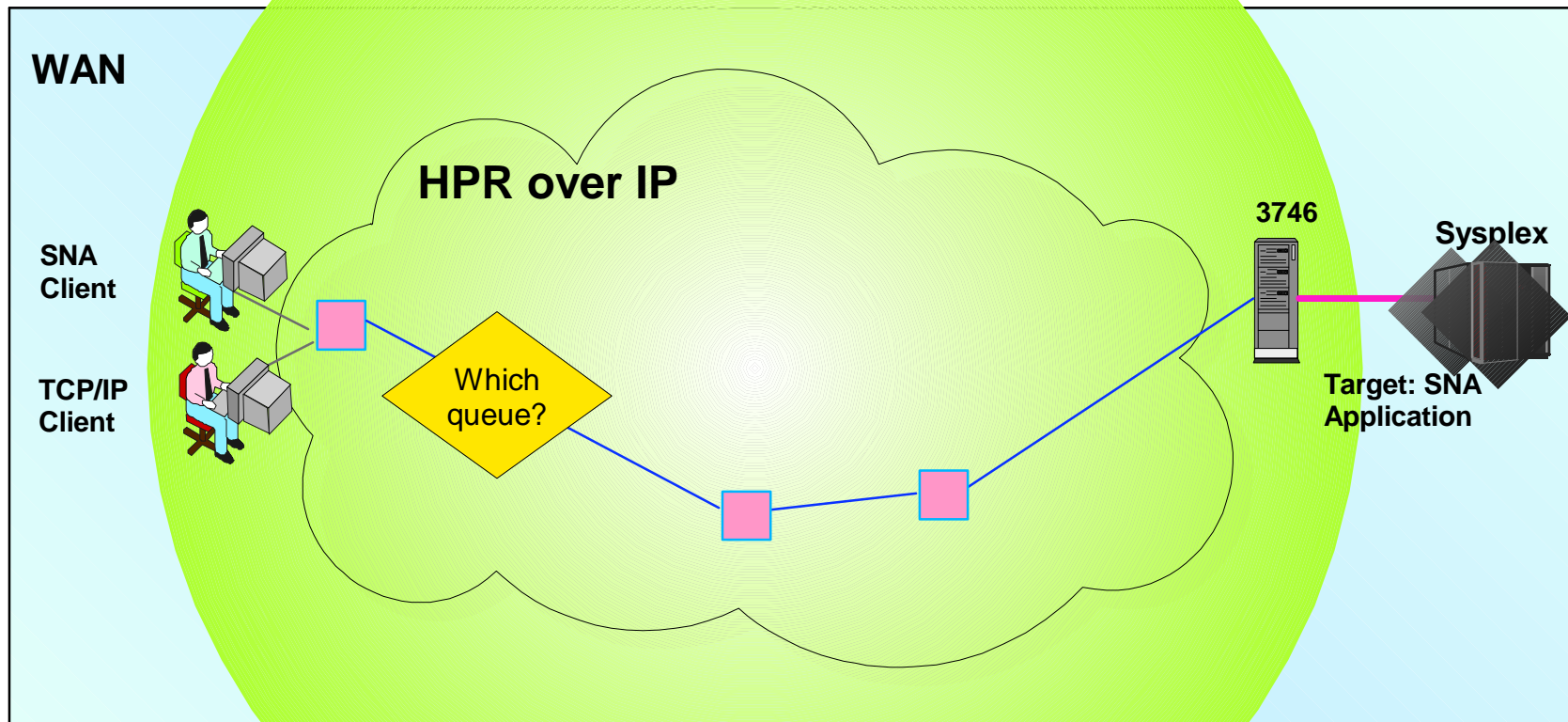
# Leveraging Uniprotocol IP



- RTP provides connection services
- UDP provides connectionless transport
- IP-based reactive congestion control

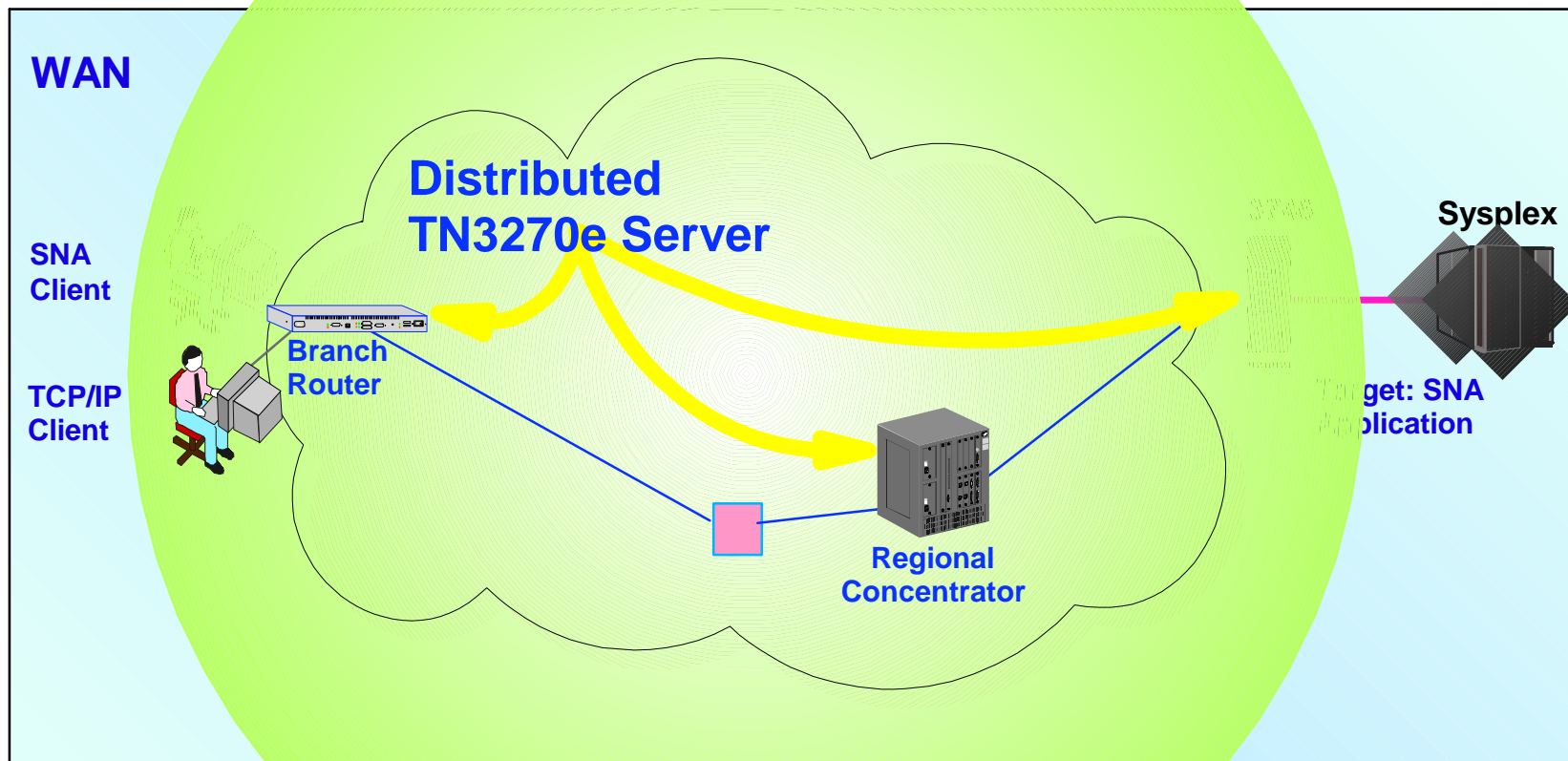
- Benefits:
  - Effective SNA application access
  - IP and SNA clients supported





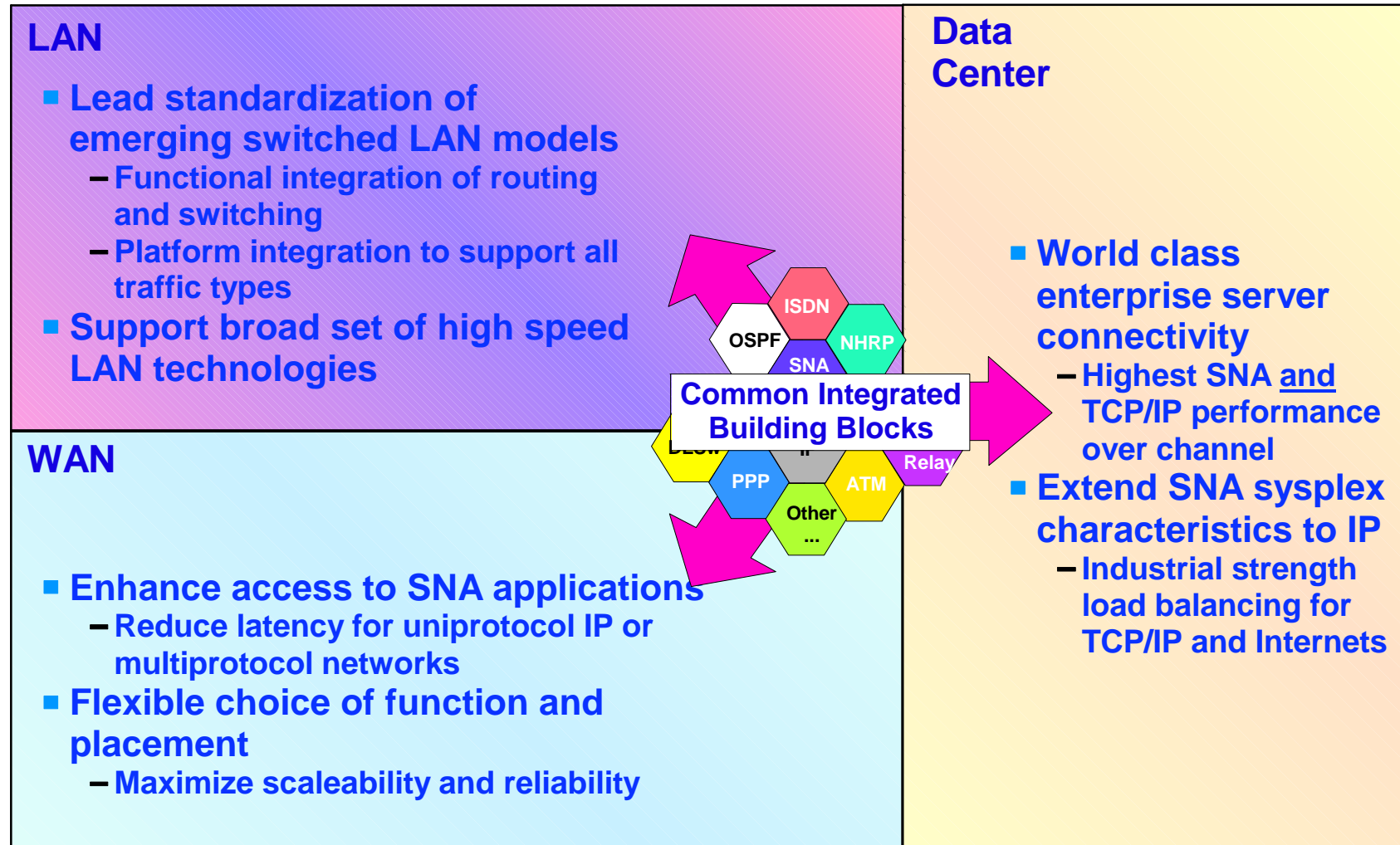
- Traffic prioritization over existing IP network
  - Preserves SNA application prioritization
  - Maps SNA priorities to UDP sockets

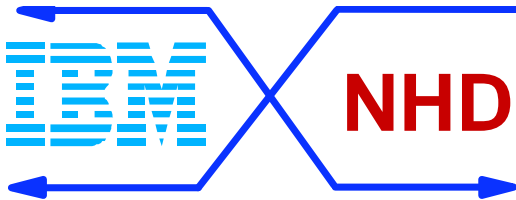
- Significantly improved performance, scalability, and availability for SNA clients (DLSw)
- Enhanced availability for IP clients (TN3270)



- Offers scalability via flexible placement of function
- Improves control of network latency when combined with Enterprise Extender

# Strategic Focus





# IBM Industry Leading Network Management

## Nways N/W Management

### Portfolio

#### *Wide Area Network (WAN) Management*

##### **Nways Enterprise Manager**

TME 10 Netview for AIX & TMN/6000

2220 Switch Management

Router & Bridge Monitoring

3746 Management

#### *Campus and Workgroup Management*

##### **Nways Manager for AIX**

LAN , ATM for TME 10 NetView for AIX and HP OV

ReMON for AIX or HP-UX

TRAFFIC for AIX

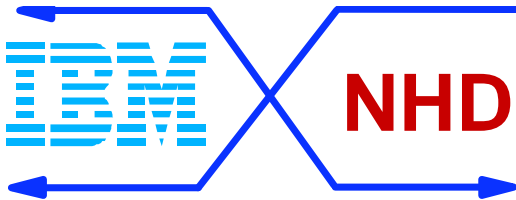
##### **Workgroup Management**

Workgroup Manager , Workgroup ReMON for Microsoft Windows NT

##### **Nways RouteSwitch Suite**

Route Mgr , Route Tracker for TME NV/HP OV Win 95 & NT

Route Monitor , Route Director for WIN 95 & NT

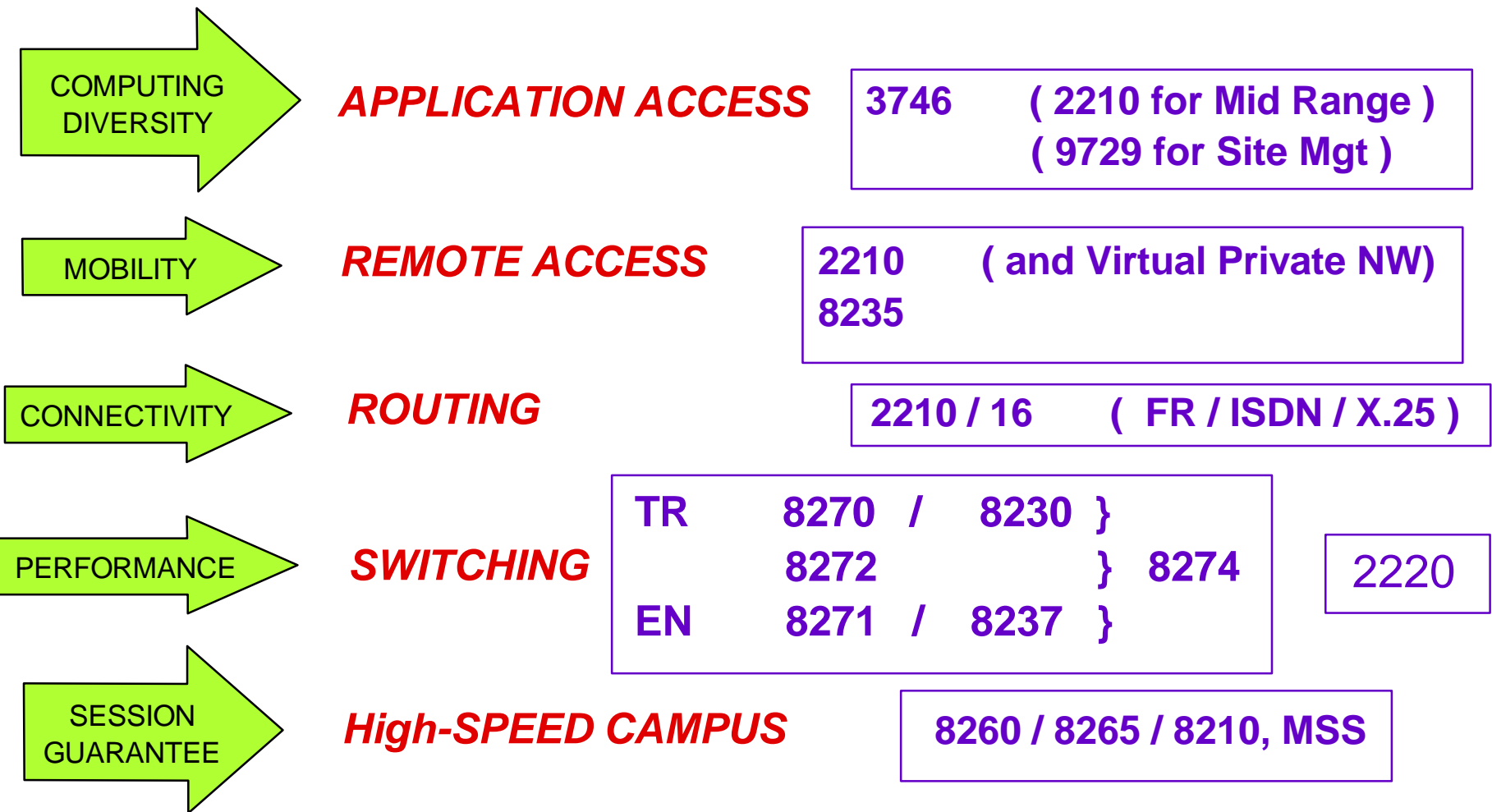


# 1998 Segment FOCUS

BUSINESS NEEDS----}

NETWORKING REQUIREMENTS---}

IBM NHD Product FOCL



2220