

IBM Workplace Designer Version 2.5:

*Installing Workplace Designer V 2.5 on an IBM
iSeries system*

*Daniel Hill
IBM eServer Solution Enablement
September 2005*

Table of contents

Abstract	4
Introduction.....	5
Downloading and installing IBM Workplace Designer.....	5
Installing the IBM Workplace Designer 2.5 Runtime.....	12
Installing the IBM Workplace Designer Client.....	19
Installing the IBM Workplace Builder iFix.....	24
Summary	24
Resources	25
About the author.....	26
Trademarks and special notices	27

Abstract

IBM® Workplace™ Designer 2.5 is a standards-based development tool that allows developers to quickly and easily create components for release 2.5 of the IBM Workplace family of products. These components can then be used within IBM Workplace applications from any Web browser.

This white paper demonstrates how to easily and graphically install IBM Workplace Designer 2.5 on IBM iSeries systems.

Introduction

For those with experience in IBM Notes® and Domino® programming, IBM Workplace Designer can be viewed as a tool for providing IBM Domino Designer®-like application development functions, yet its development assistance supports the IBM Workplace family of products. There are many similarities between the two development tools, allowing experienced Domino developers to leverage their skills to quickly create new applications for IBM Workplace products.

Of course, the first task in using this tool is to install it, which is the purpose of this paper.

Downloading and installing IBM Workplace Designer

To download IBM Workplace Designer (and its InstallShield®-based installation wizard) to an existing IBM Workplace Collaboration Services 2.5.1 or IBM Workplace Services Express 2.5 deployment, perform the following steps:

1. Open a browser to the IBM Software Access Catalog Web site at www.developer.ibm.com/welcome/softmall.html and click the **Log in to Software Access Catalog** (Figure 1).

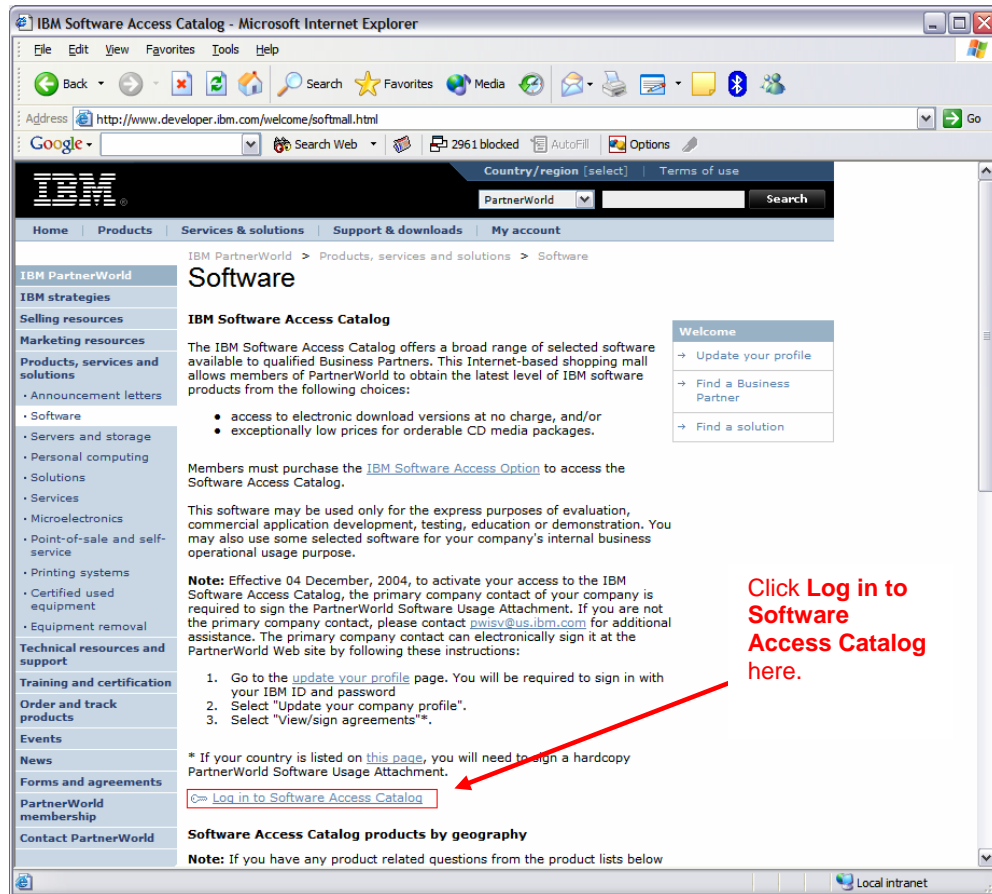


Figure 1: The IBM Software Access Catalog

2. In the boxes provided, enter the correct PartnerWorld **user name** and **password** (Figure 2).

Enter your user name and password in the boxes.

Figure 2: PartnerWorld login screen

3. Review the International PartnerWorld Software Usage Attachment as shown in Figure 3, and then scroll down and click **I agree**.

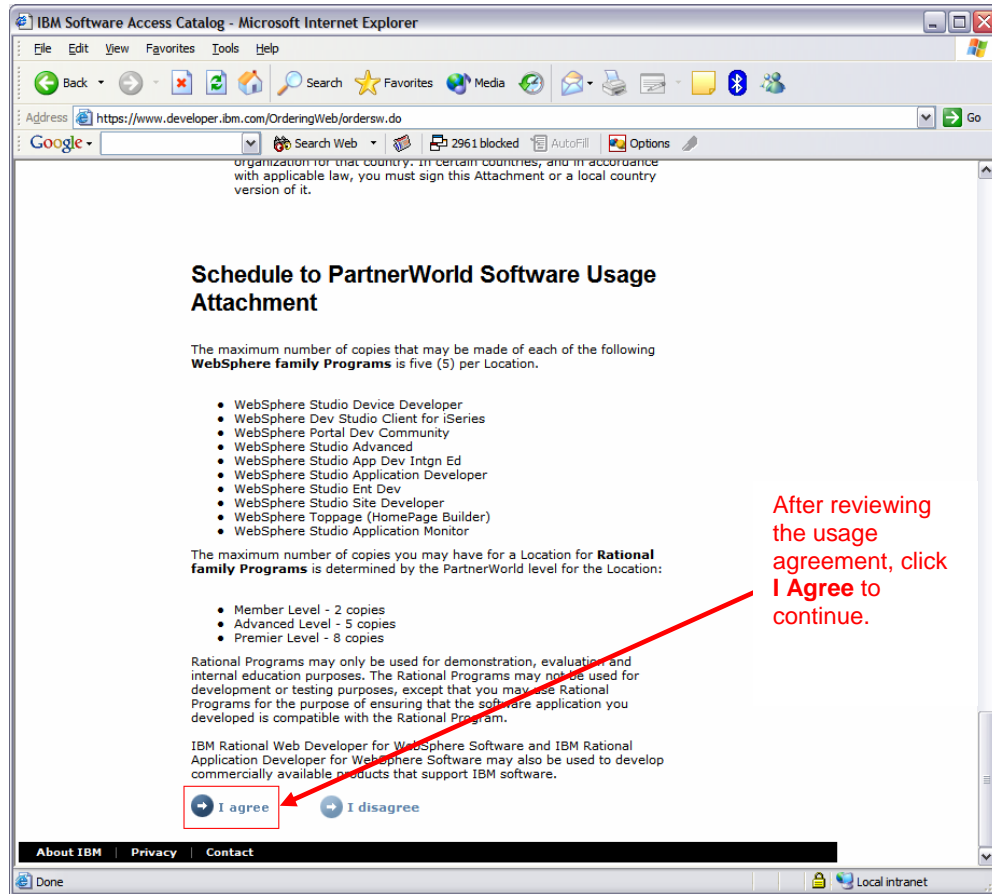


Figure 3: International PartnerWorld Software Usage Attachment

4. To download IBM WebSphere® Portal, click **Software Access Catalog - Electronic Software Download**. To order the software on CD, click **Software Access Catalog - CD Media Purchases** (Figure 4).



Figure 4: Inside the IBM Software Access Catalog

5. In order to find the correct download, be sure to enter **IBM Workplace Designer** in the text box. Because the search tool searches for exact character strings, entering words in the wrong order can lead to problems in finding the correct downloads. It is quicker to select the **All** radio button and click **Search** (Figure 5).

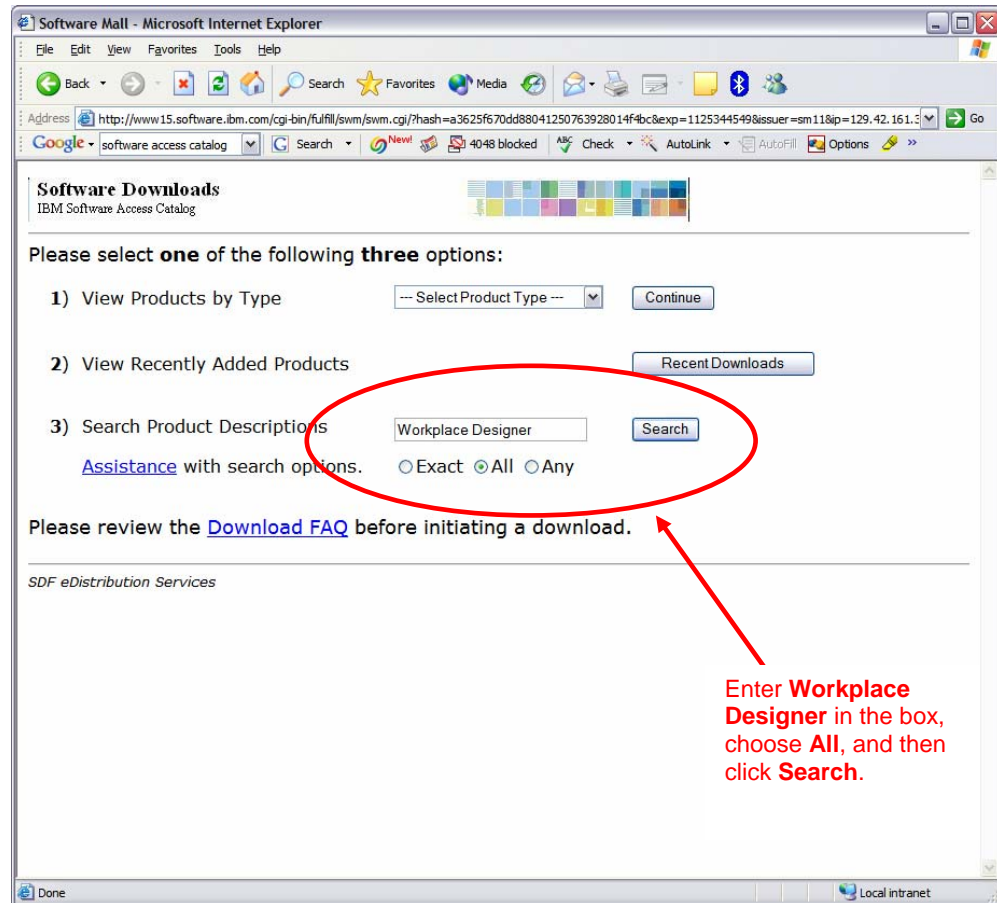


Figure 5: Software search screen

- The search results will display on the following screen, shown in Figure 6. Under *Multi-File Assemblies*, choose **IBM Workplace Designer 2.5, Multiplatform Multilingual eAssembly** to access the needed files.

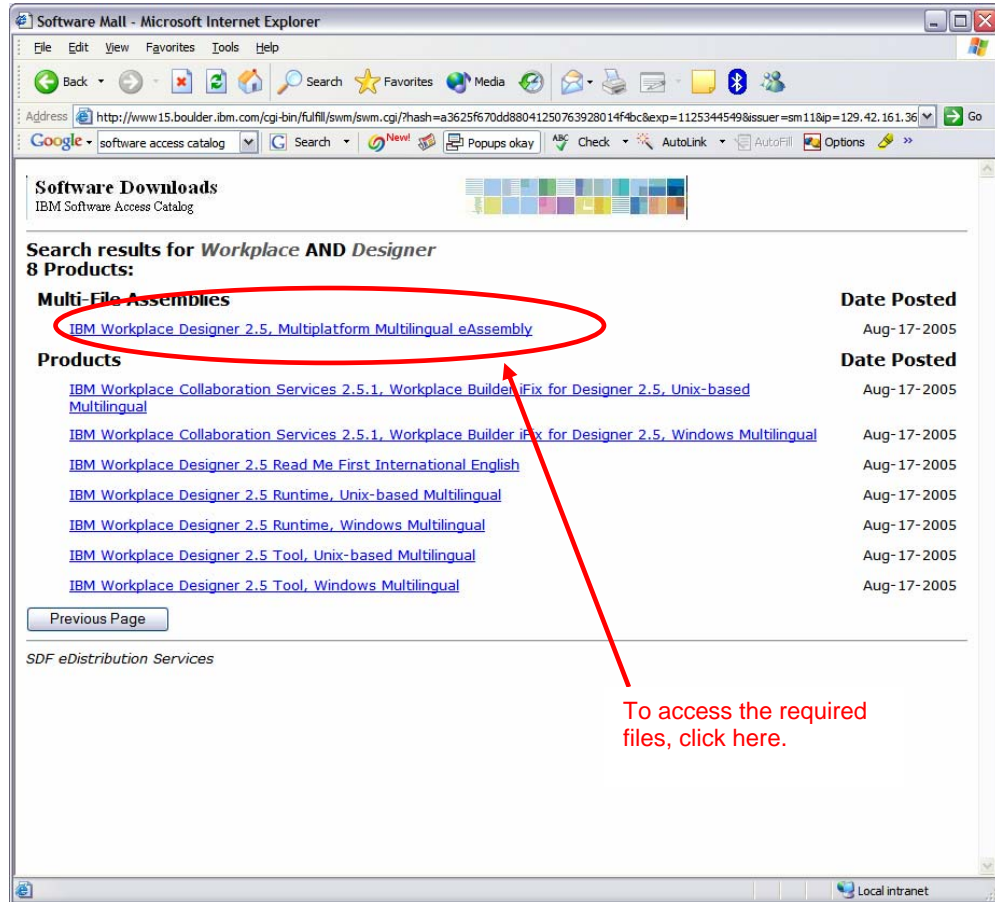


Figure 6: Search results

7. Download the appropriate files for each operating system
 - **3 of 25:** IBM Workplace Designer 2.5 Tool (Microsoft® Windows®, multilingual)- C85U9ML.exe
 - **5 of 25:** IBM Workplace Designer 2.5 Runtime (UNIX®, multilingual)- C865MML.tar
 - **7 of 25:** IBM Workplace Collaboration Services 2.5.1, IBM Workplace Builder iFix for Designer 2.5 (UNIX, multilingual)- C865PML.tar
 - **22 of 25:** IBM Workplace Managed Client 2.5.1, server install 1 of 2 (multiplatform, multilingual)- C85QUML.tar
 - **23 of 25:** IBM Workplace Managed Client 2.5.1, server install 2 of 2 (multiplatform, multilingual)- C85QVML.tar

Installing the IBM Workplace Designer 2.5 Runtime

1. Following the above instructions, download C865MML.tar.
2. On the server, create an installation directory /WPLC25Install.
3. Extract C865MML.tar in the WPLC25Install directory.
4. Copy the tar file to /WPLC25Install on the iSeries integrated file system (IFS).
5. At the command line, enter **STRQSH**.
6. Change the directory to /WPLC25Install, and then run:
pax -rv -C 819 -f C865MML.tar .
7. For all platforms, the directories look like this:

```
WPLC25Install\readmefirst.txt
WPLC25Install\DesignerRuntime\License\
WPLC25Install\DesignerRuntime\Server\DesignerServerSetup.jar
WPLC25Install\DesignerRuntime\Server\DesignerServerSetupAIX.bin
WPLC25Install\DesignerRuntime\Server\DesignerServerSetupLinux.bin
WPLC25Install\DesignerRuntime\Server\DesignerServerSetupSolarisSparc.
bin WPLC25Install\DesignerRuntime\Server\DesignerServerSetupWin32.exe
WPLC25Install\DesignerRuntime\Server\install.bat
WPLC25Install\DesignerRuntime\Server\install.sh
WPLC25Install\DesignerRuntime\Server\install400.bat
```

8. Run install400.bat to start the installation wizard.
9. Enter the system name, user ID, and password in the boxes in the sign-on prompt shown in Figure 7. Click **OK**.

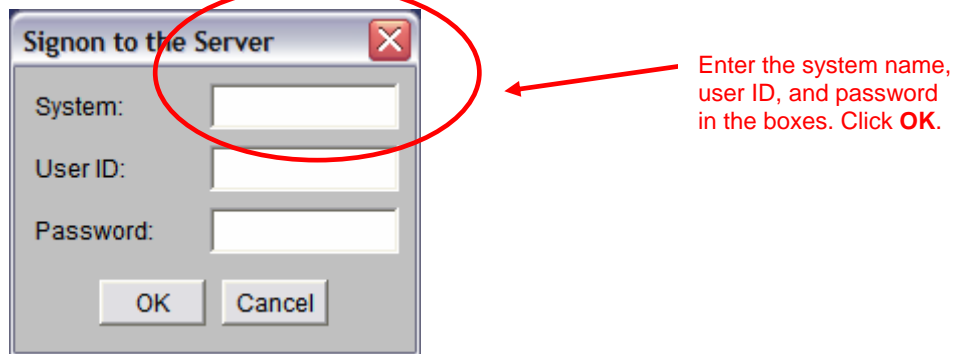


Figure 7: Server sign-on screen

10. The next prompt will require choosing the native language to be used for interaction purposes with the wizard (Figure 8). Choose the desired language from the drop-down menu and then click **OK**.

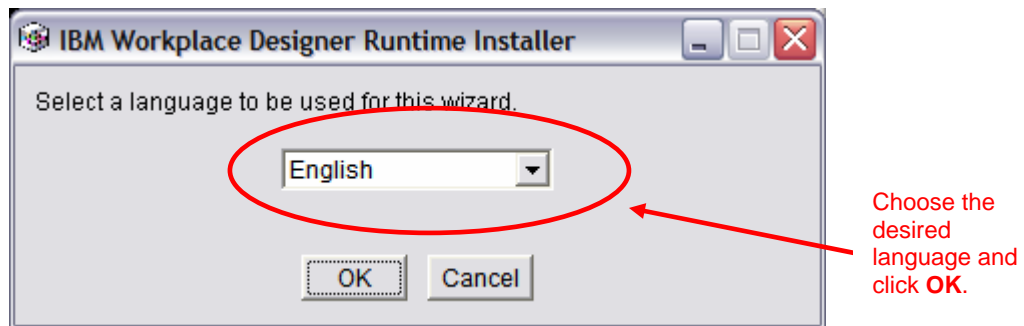


Figure 8: Language selection screen

11. The welcome screen will appear next (Figure 9). Read through the information and click **Next** to continue.

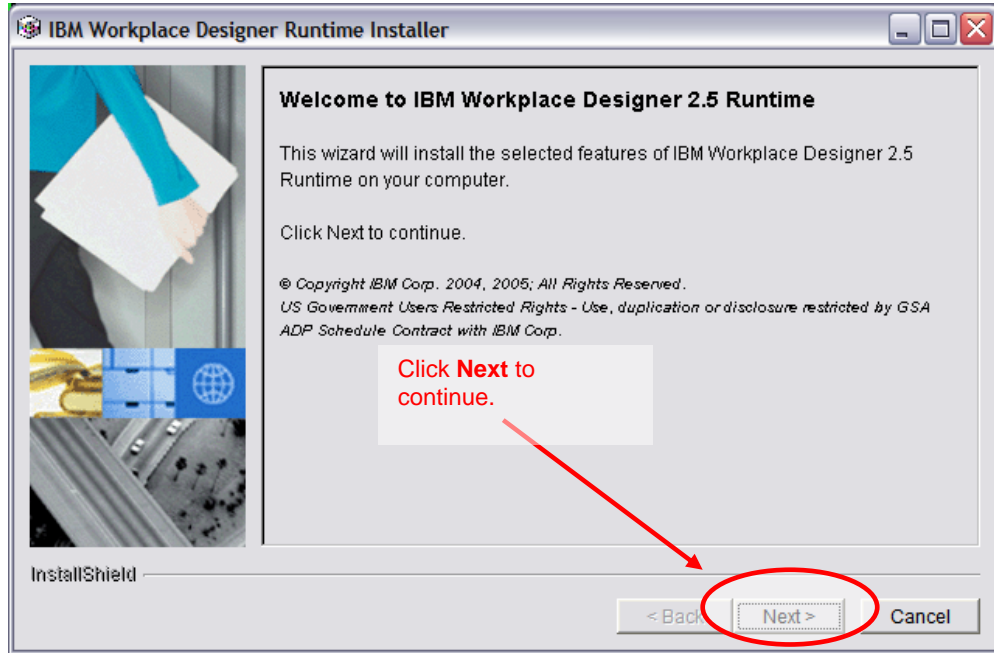


Figure 9: IBM Workplace Designer 2.5 Runtime welcome screen

12. Review the license agreement as shown in Figure 10 and choose the radio button to accept them. Click **Next** to continue.

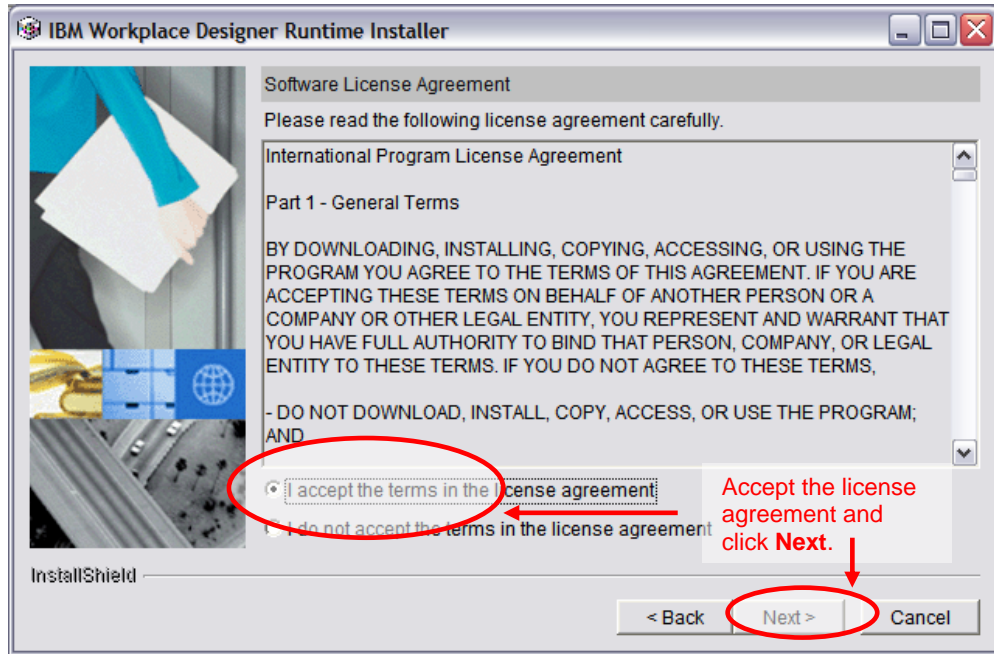


Figure 10: Software License Agreement

13. It will be important to know the cell name and node location for the IBM Workplace Collaboration Services Server. These will be prompted during the execution of this installation wizard (Figure 12). These locations can be acquired from an IFS tree listing, as shown below (Figure 11).

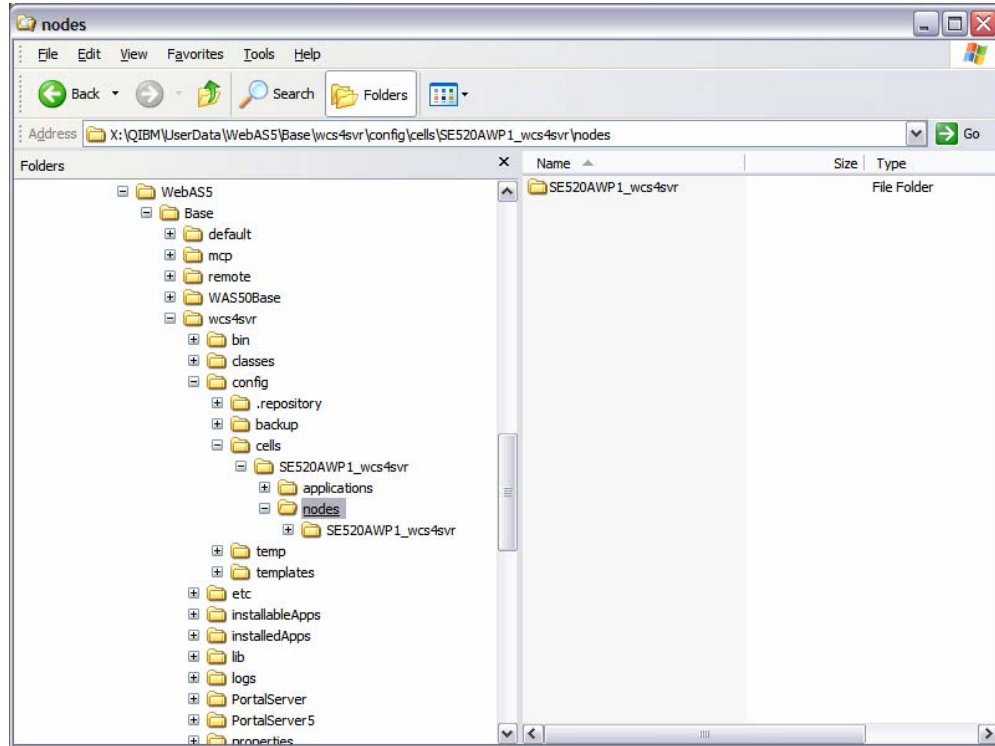


Figure 11: Location of the node and name of the cells

14. Choose the installation location of the IBM Workplace Collaboration Services Server and then click **Next** (Figure 12).

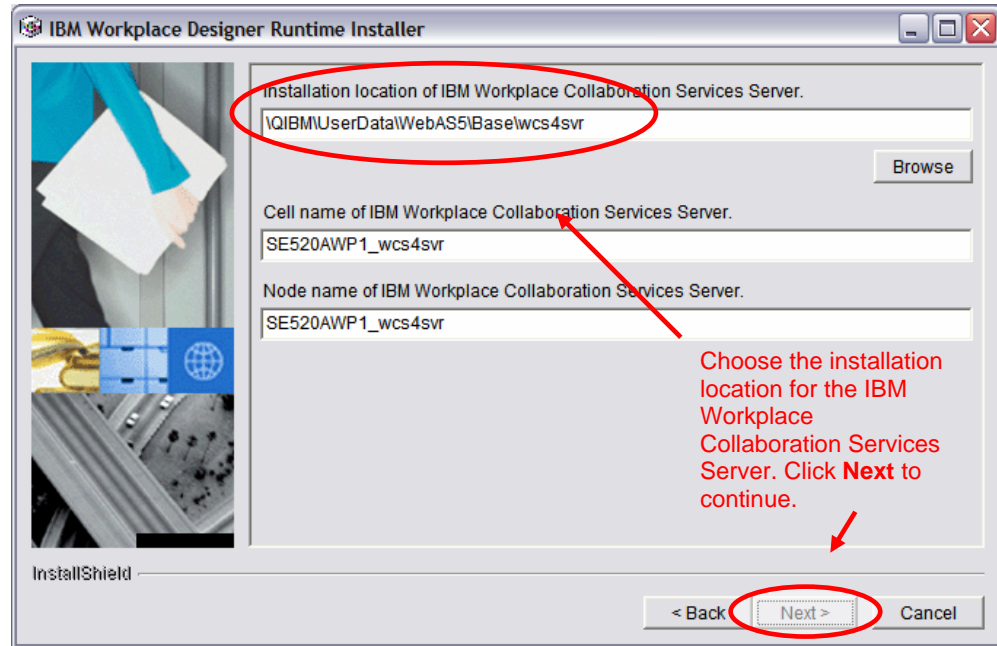


Figure 12: IBM Workplace Collaboration Services Server installation directory selection screen

15. Choose a directory for the IBM Workplace Designer 2.5 Runtime installation and then click **Next** to continue (Figure 13).

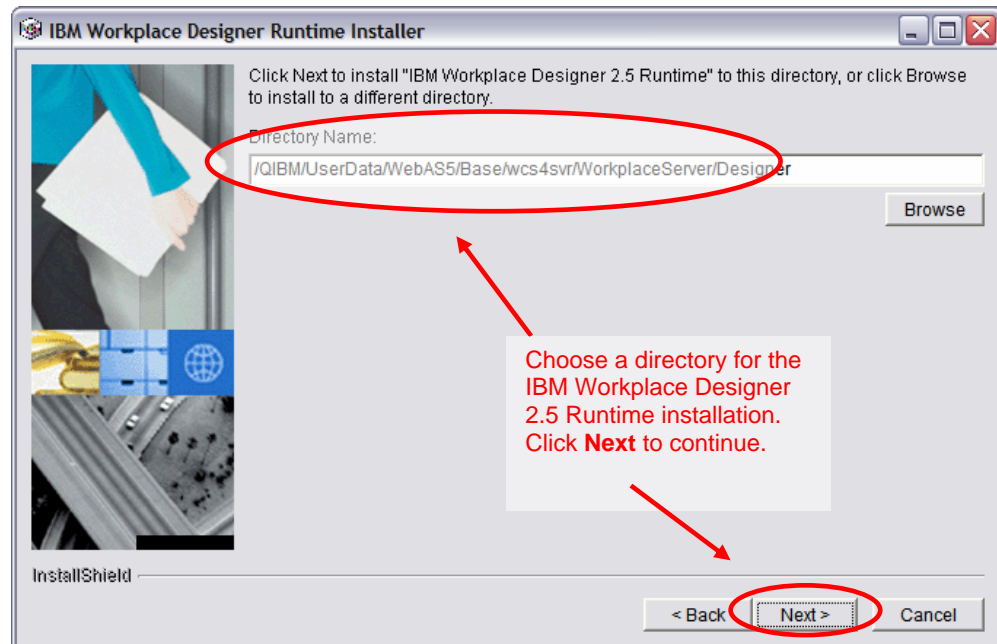


Figure 13: IBM Workplace Designer 2.5 Runtime installation directory selection screen

16. The following screen, shown in Figure 14, will contain a summary of the installation. Review the data, then click **Next** to continue with the installation.

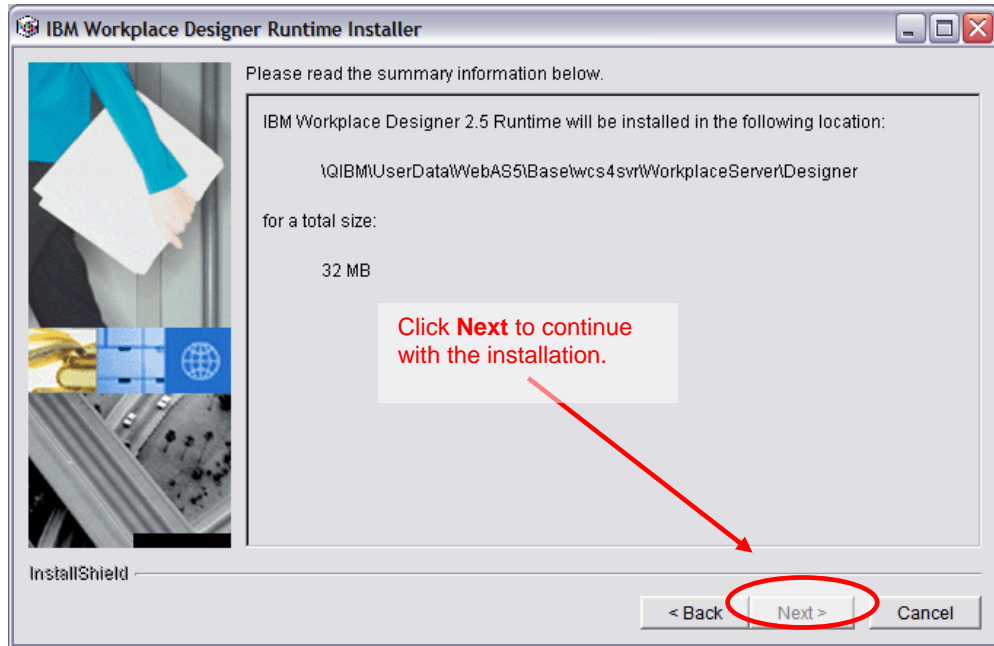


Figure 14: Installation summary screen

17. Monitor the installation progress on the next screen (Figure 15).

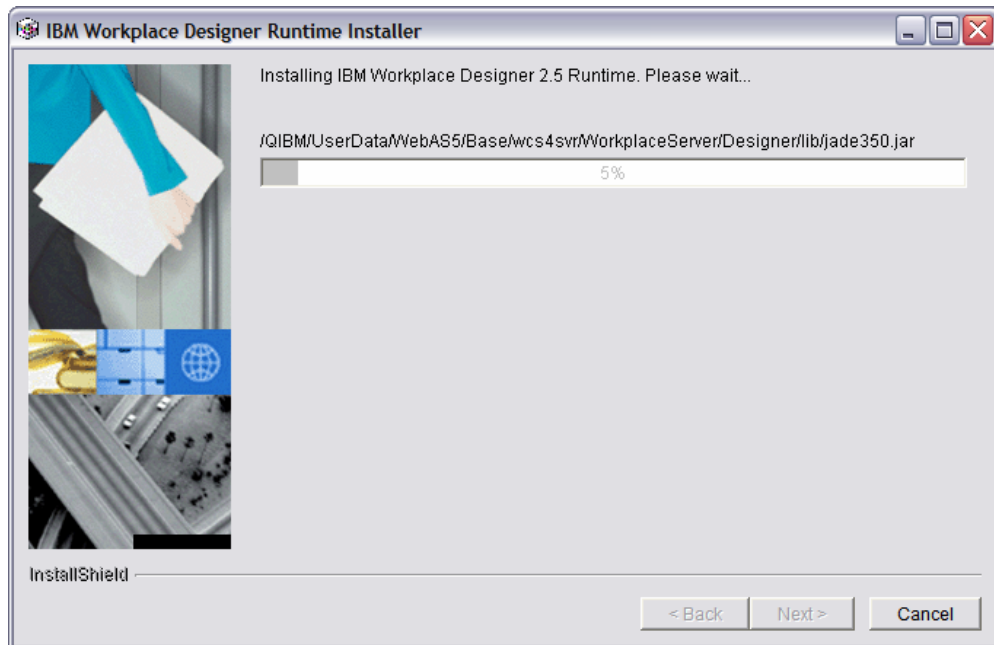


Figure 15: Installation progress screen

18. After the installation is complete, click **Finish** to exit the installation wizard (Figure 16).

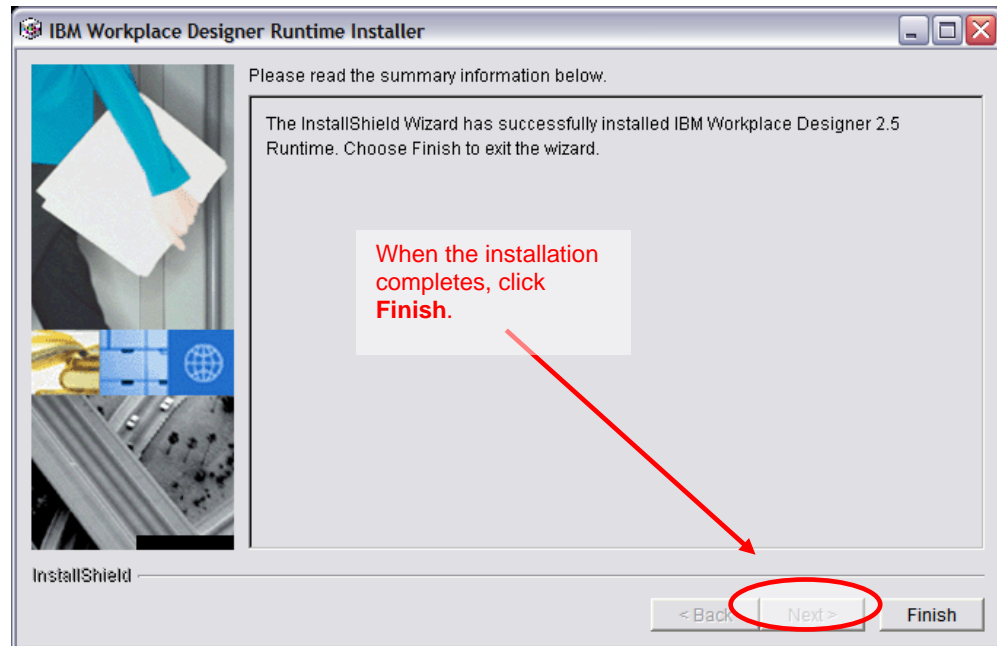


Figure 16: Installation completion screen

Installing the IBM Workplace Designer Client

1. Install the IBM Workplace Managed Client. Directions for this installation process are downloadable at <http://xxx>.
2. Run the self-extracting C85U9ML.exe (Windows) in the WPLC25Install directory on the client computer.
3. For all platforms, the directories look like this:

```
WPLC25Install\readmefirst.txt
WPLC25Install\DesignerTool\License\
WPLC25Install\DesignerTool\Client\DesignerClientSetupLinux.bin
WPLC25Install\DesignerTool\Client\DesignerClientSetupWin32.exe
WPLC25Install\DesignerTool\WMC25\setup_wct_platform.bin
WPLC25Install\DesignerTool\WMC25\setup_wct_platform.exe
WPLC25Install\DesignerTool\WMC25\applications\
```

4. Run WPLC25Install\DesignerTool\Client\DesignerClientSetupWin32.exe
5. The IBM Workplace Designer 2.5 welcome screen will appear next. Click **Next** to begin the installation.

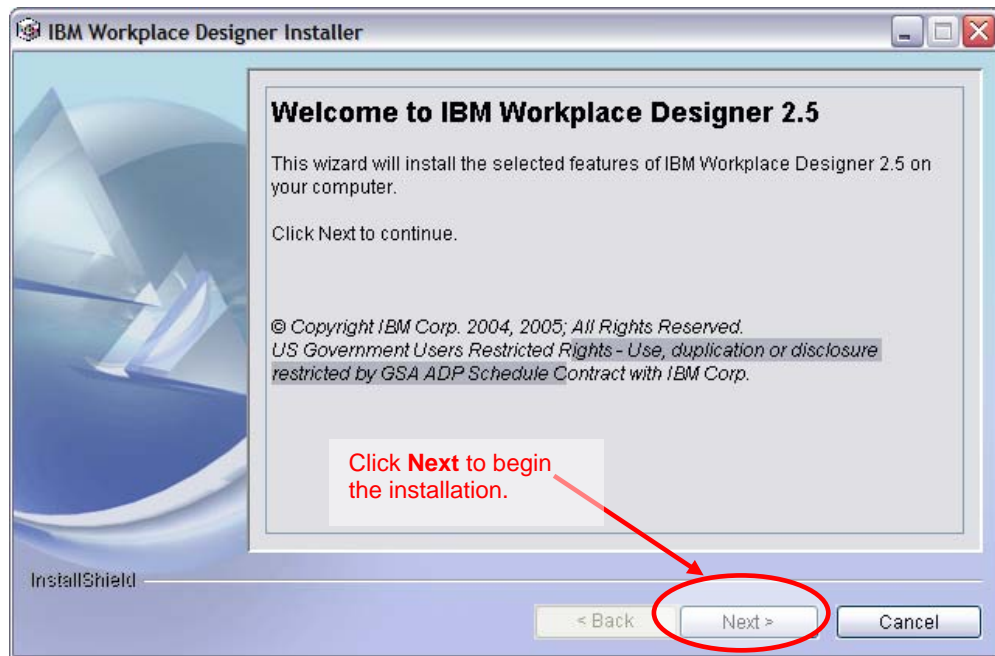


Figure 17: IBM Workplace Designer 2.5 welcome screen

6. Review the license agreement as shown in Figure 18 and choose the radio button to accept them. Click **Next** to continue.

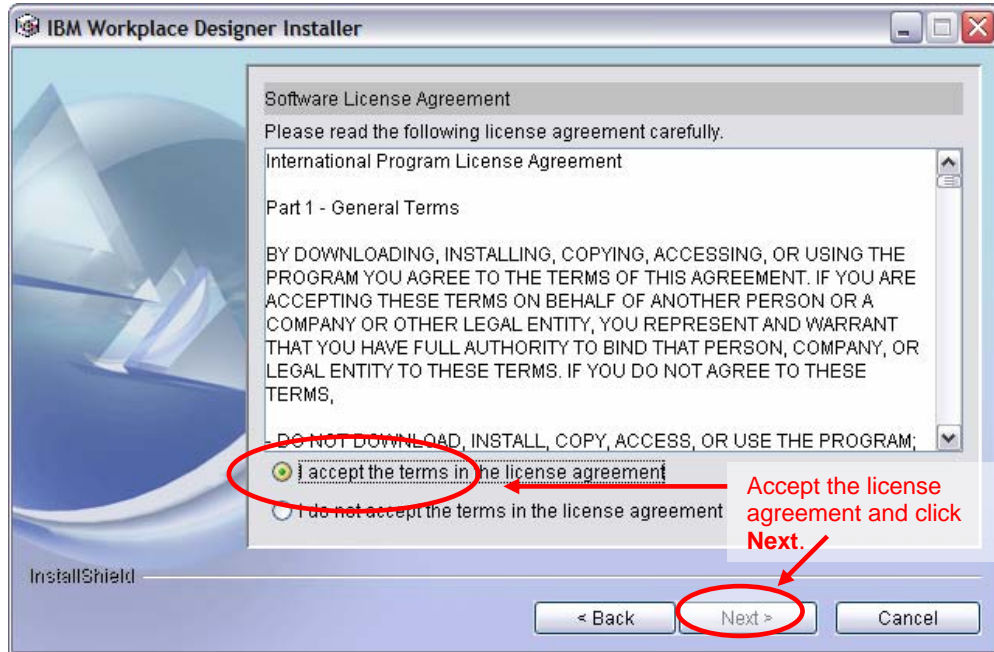


Figure 18: IBM Workplace Designer Software License Agreement

7. Choose a directory for the IBM Workplace Managed Client installation and then click **Next** to continue (Figure 19).

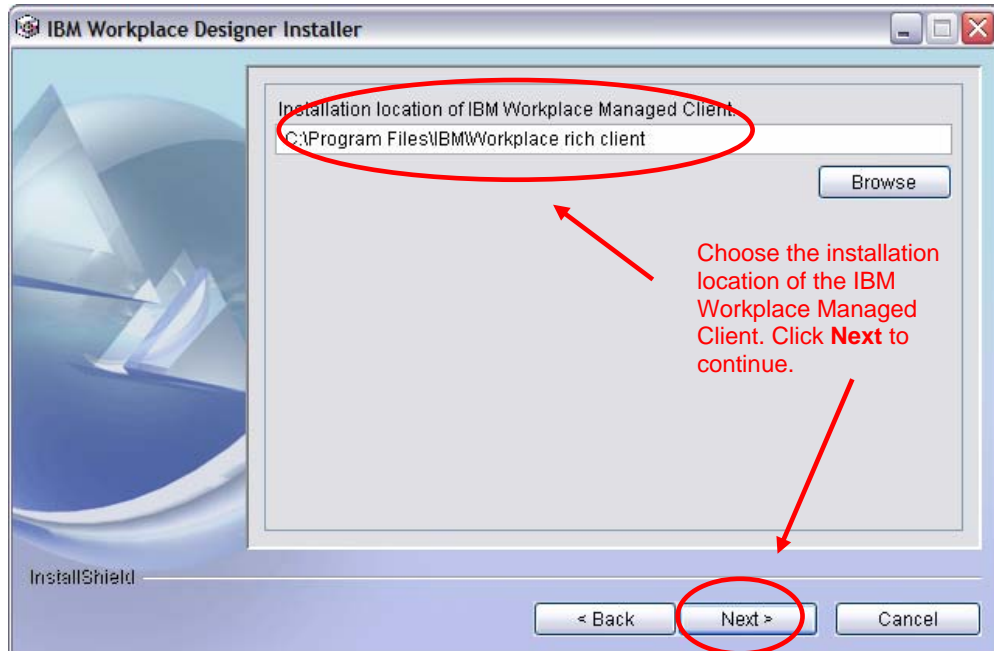


Figure 19: IBM Workplace Managed Client installation directory selection screen

8. Choose a directory for the IBM Workplace Designer 2.5 installation and then click **Next** to continue (Figure 20).

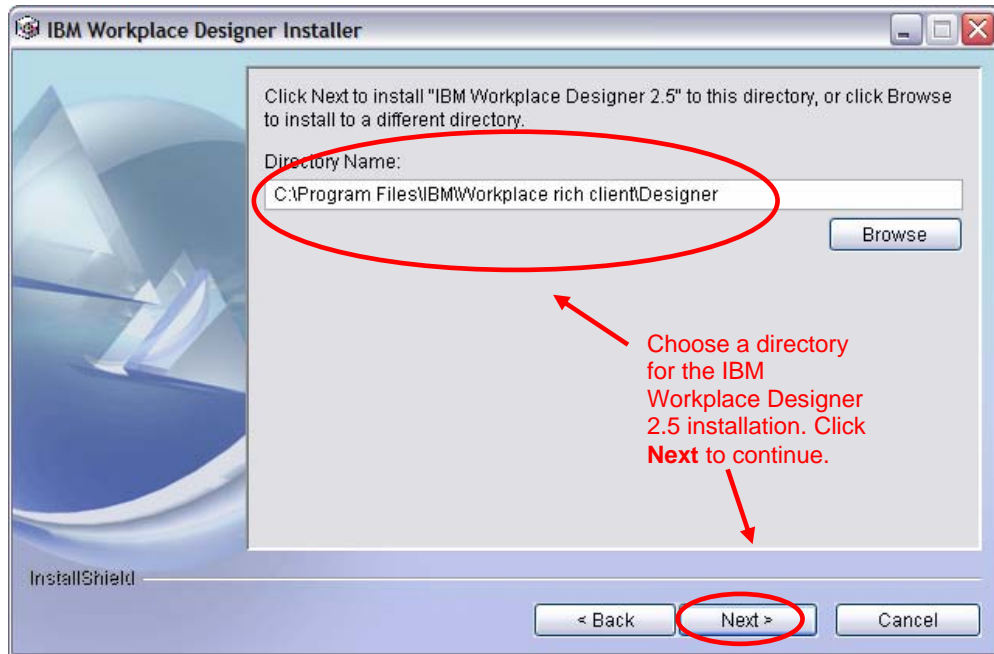


Figure 20: IBM Workplace Designer 2.5 installation directory selection screen

9. The following screen will contain a summary of the installation (Figure 21). Review the data, then click **Next** to continue with the installation.

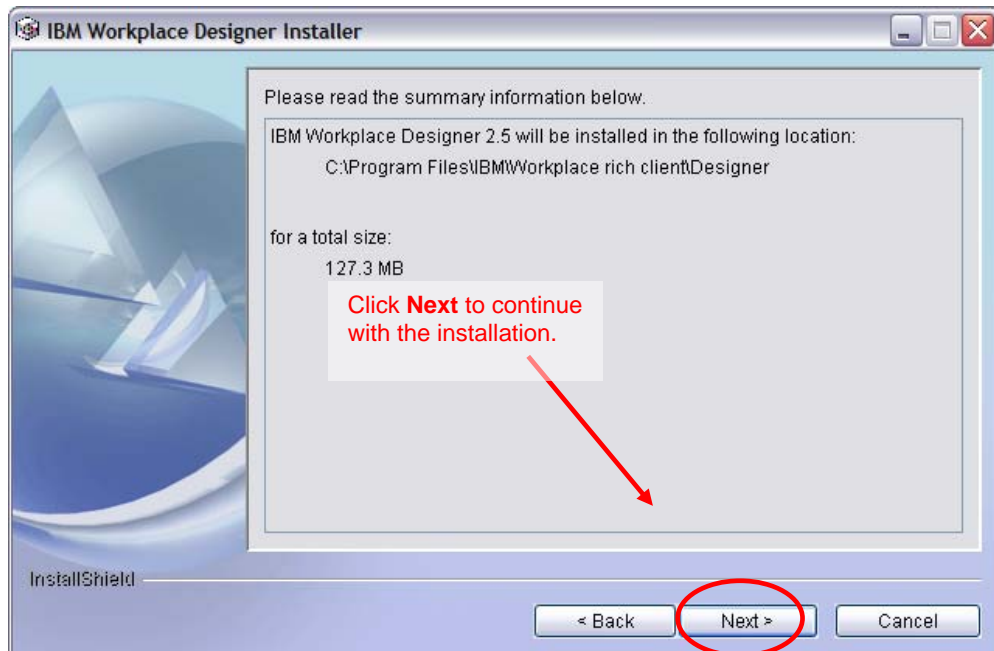


Figure 21: IBM Workplace Designer 2.5 installation summary screen

10. The next screen allows the user to monitor the installation progress with the progress bar and percentage shown in Figure 22.

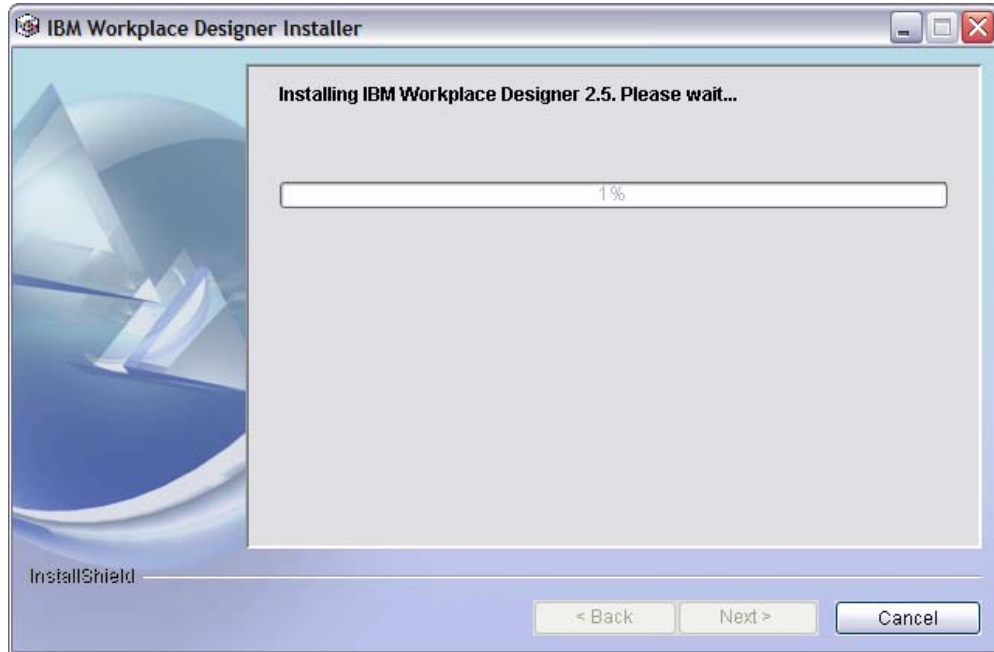


Figure 22: IBM Workplace Designer 2.5 installation progress screen

11. After the installation is complete, click **Finish** to exit the wizard (Figure 23).

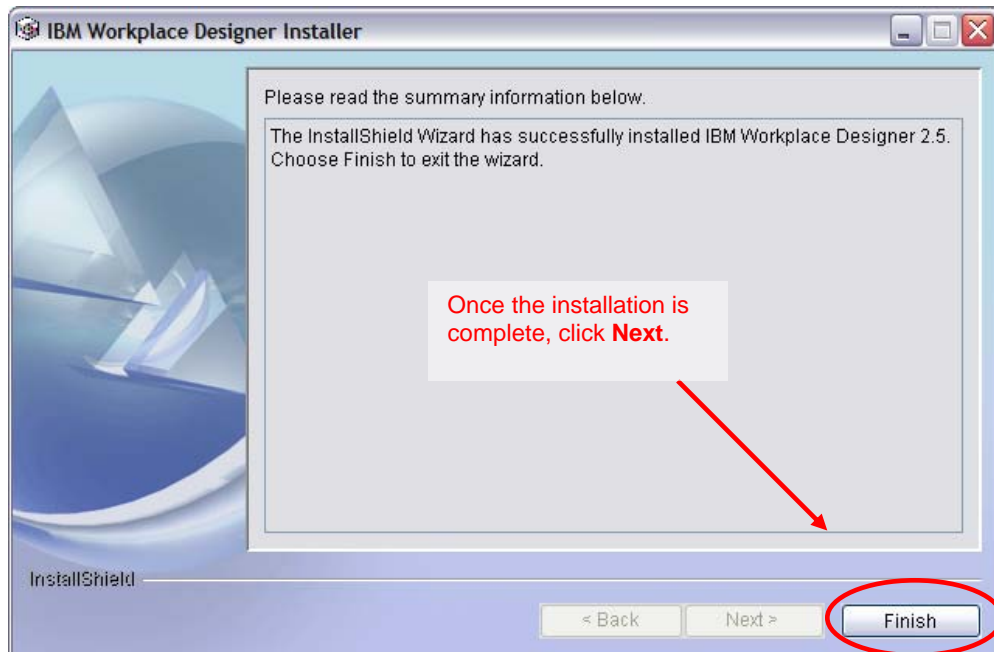


Figure 23: Installation wizard completion screen

Installing the IBM Workplace Builder iFix

The IBM Workplace Builder iFix for IBM Workplace Collaboration Services 2.5.1 (and Express 2.5) enables JavaScript logic for component parameters. These parameters identify property values for application templates on the IBM Workplace Collaboration Services (or Express) server. The iFix product lets the developer add, edit, and delete component parameters in the IBM Workplace Designer Properties panel. It is available when creating and editing templates and applications.

Note: The update installer tool must be downloaded before a fix can be installed.

The portal update installer can be downloaded from the following Web site:

ibm.com/software/genservers/portal/support/

In order to install the IBM Workplace Builder iFix, follow these steps:

1. Unzip the Portal Update installer to /PUI.
2. Extract the tar image from the C865PML.tar to the WCS directory. Be sure to preserve the folder structure.
3. Copy the tar file to /wpDesigner/fix on the IFS on the iSeries server.
4. On the command line enter: **STRQSH**.
5. Change the directory to /wpDesigner/fix and run **pax -rv -C 819 -f C865PML.tar**. The LOD6N7T.jar file should be extracted
7. Shutdown the WCS instance.
8. Follow the Fix installation instructions that are packaged with the Portal Update Installer on how to install the fix.
9. On the command line, enter **STRQSH**.
10. Change the directory to /PUI.
11. Run `updatePortal.sh -install -fixDir /WPDesinger/fix -installdir /qibm/userdata/webas5/base/<wcs_instance> -fix -fixes LOD6N7T`
12. Restart the IBM Workplace Collaboration Services instance. (The temp directory may be removed.)

Summary

IBM Workplace Designer is an Eclipse-based development tool on par with Lotus Domino Designer. This new integrated development environment (IDE) provides many of the sophisticated features that programmers expect from an IDE. Even its installation is an easy, graphically-driven process that has been explained, screen-by-screen in this white paper. There is a wealth of additional material on using this tool, as is evidenced by the Web sites listed in the “Resources” section of this paper.

Resources

These Web sites provide useful reference materials to supplement the information contained within this document.

IBM Workplace Resource Center

ibm.com/developerworks/workplace/

IBM Workplace application development home page

ibm.com/developerworks/workplace/client.html

IBM Workplace for iSeries

ibm.com/servers/eserver/series/software/workplace

IBM Workplace Managed Client

www.lotus.com/products/product5.nsf/wdocs/workplaceclienttech

- IBM Workplace Client Technology Overview and Business Considerations
- IBM Workplace Client Technology—delivering the rich client experience

IBM Redbooks™

publib-b.boulder.ibm.com/Redbooks.nsf/portals/iSeries

[Deploying IBM Workplace Collaboration Services on the IBM eServer iSeries server](#) (SG24-6640)

IBM eServer iSeries home page

ibm.com/servers/eserver/iSeries

iSeries Information Center

<http://publib.boulder.ibm.com/infocenter/series/v5r3/ic2924/index.htm>

Articles:

- Introducing IBM Workplace Designer
ibm.com/developerworks/lotus/library/workplace-designer/
- Develop applications for the IBM Workplace Managed Client (rich client) platform with the IBM Workplace Client Technology API, part of the IBM Workplace Collaboration Services API Toolkit
ibm.com/developerworks/lotus/library/wcs-toolkit/
- Designing Workplace Designer: An interview with the IBM Workplace Designer design team
ibm.com/developerworks/lotus/library/workplace-designer-interview/

White papers:

- *The IBM Workplace Managed Client: Installing on an IBM eServer iSeries system*
- *The IBM Workplace Managed Client provisioning server: Installing on an IBM eServer iSeries system*

IBM Workplace Client Provisioning Server FAQ

www.developer.ibm.com/isv/tech/faq/individual?oid=2:86510

About the author

Daniel Hill is a member of the iSeries e-Business team in IBM PartnerWorld® for Developers, where he helps solution providers integrate their iSeries applications with IBM Domino. A certified Lotus Professional, he is also certified as a Domino R5 Application Developer and Domino R4 Notes Principal Application Developer. Before joining the PartnerWorld team, he developed Domino and Java development tools for use with OS/400.

Trademarks and special notices

© IBM Corporation 1994-2005. All rights reserved.

References in this document to IBM products or services do not imply that IBM intends to make them available in every country.

The following terms are trademarks or registered trademarks of International Business Machines Corporation in the United States, other countries, or both: IBM, the IBM logo, eServer, iSeries, WebSphere, i5/OS, OS/400, Workplace Client Technology, Redbooks, and ibm.com.

Rational is a trademark of International Business Machines Corporation and Rational Software Corporation in the United States, other countries, or both.

Java and all Java-based trademarks are trademarks of Sun Microsystems, Inc. in the United States, other countries, or both.

Microsoft, Windows, Windows NT, and the Windows logo are trademarks of Microsoft Corporation in the United States, other countries, or both.

Intel, Intel Inside (logos), MMX and Pentium are trademarks of Intel Corporation in the United States, other countries, or both.

UNIX is a registered trademark of The Open Group in the United States and other countries.

Linux is a trademark of Linus Torvalds in the United States, other countries, or both.

SET and the SET Logo are trademarks owned by SET Secure Electronic Transaction LLC.

Other company, product or service names may be trademarks or service marks of others.

Information is provided "AS IS" without warranty of any kind.