

***Downloading IBM Workplace
Services Express V2.5 for iSeries
from the IBM Software Access
Catalog***

by **Daniel Hill**

IBM eServer Solutions Enablement

November 2005

Table of contents

Overview	3
Download Workplace Services Express V2.5 from the IBM Software Access Catalog	3
Creating Workplace Services Express install files	10
WebSphere Enterprise Enablement install files	15
WebSphere Enterprise Enablement install files	16
Summary	16
Trademarks and disclaimers	17

Overview

This lab is designed to help you successfully download and prepare the media for installing IBM® Workplace™ Services Express Version 2.5 on an IBM iSeries system.

Gaining access to Workplace Services Express V2.5 from IBM PartnerWorld® for Developers Software Access Catalog requires only a few easy steps. If your company is registered with PartnerWorld for Developers and you are not listed as a contact, you will need to locate the primary contact in your company for the PartnerWorld for Developers membership before continuing with this paper.

Download Workplace Services Express V2.5 from the IBM Software Access Catalog

1. Open a browser to the *IBM Software Access Catalog* Web site: www.developer.ibm.com/welcome/softmall.html and click on the **Log in to Software Access Catalog** (Figure 1).

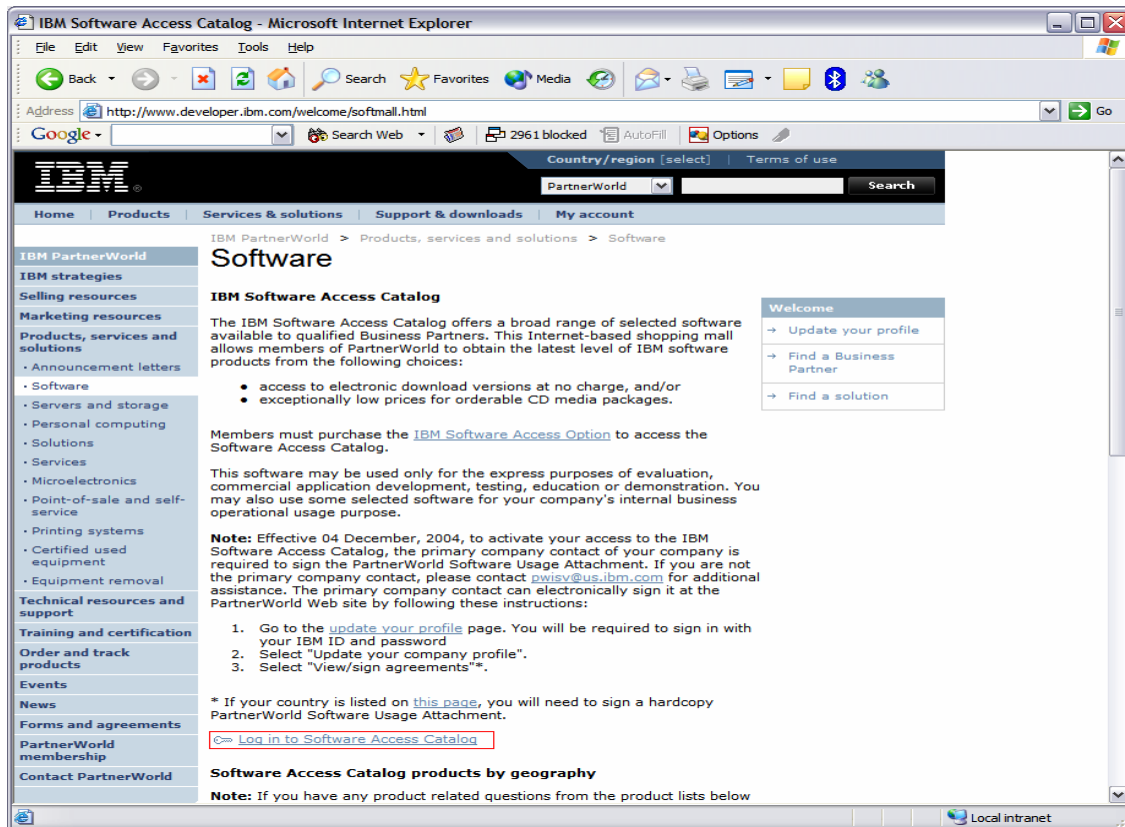


Figure 1: IBM Software Access Catalog log-in screen

Downloading IBM Workplace Collaboration Services V2.5 for iSeries from the IBM Software Access Catalog

2. Enter your PartnerWorld user ID and password (Figure 2).



Figure 2: PartnerWorld user ID and password entry screen

3. Review the *IBM PartnerWorld Agreement — International PartnerWorld Software Usage Attachment*. Scroll down and click **I agree** (Figure 3).

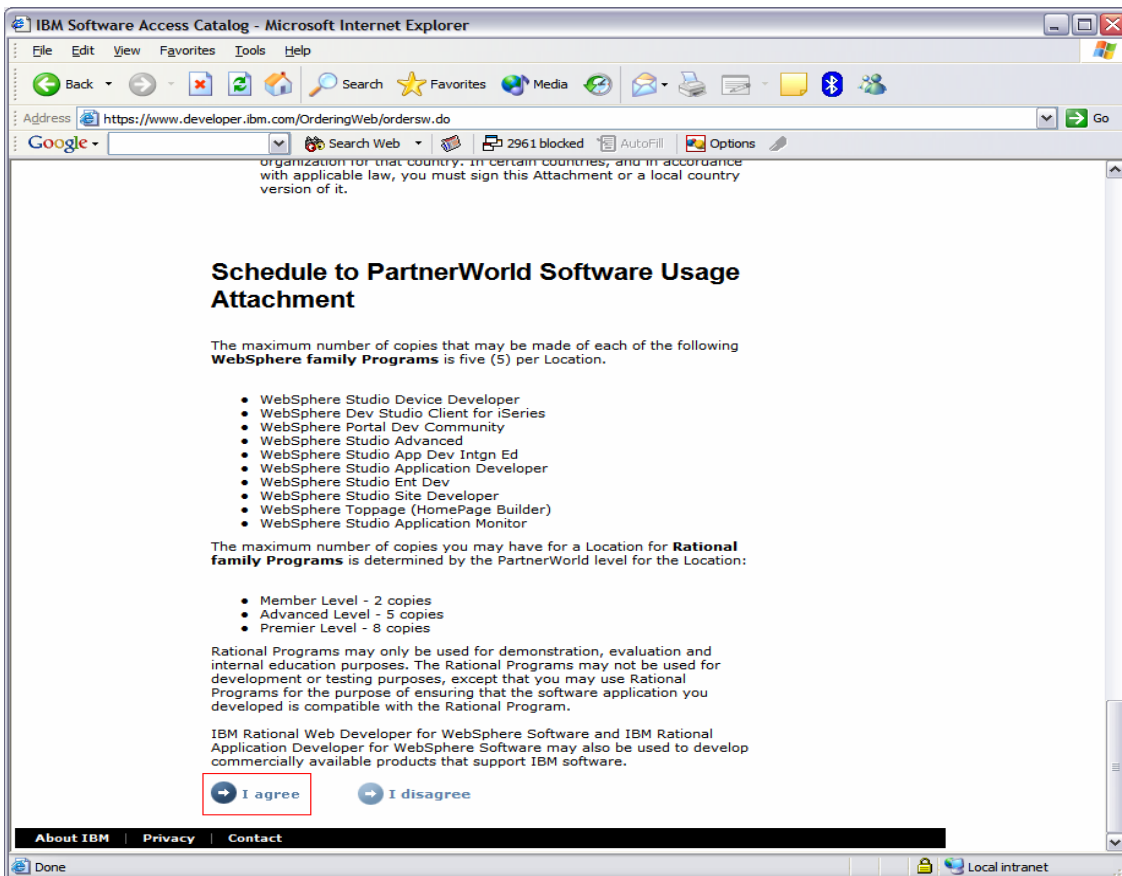


Figure 3: The PartnerWorld Software Usage Attachment

Downloading IBM Workplace Collaboration Services V2.5 for iSeries from the IBM Software Access Catalog

4. Click **Software Access Catalog - Electronic Software Download** (Figure 4) to download the IBM WebSphere® Portal (this is an optional step). To order CDs (for a nominal cost), click **Software Access Catalog - CD Media Purchases**.



Figure 4: Software Access Catalog

Downloading IBM Workplace Collaboration Services V2.5 for iSeries from the IBM Software Access Catalog

5. The search tool searches for exact text. This is important because searching for words in the wrong order can lead to not finding the correct downloads. Enter **“IBM Workplace Services Express 2.5”** in the text box, select the **All** radio button, and click **Search** (Figure 5).

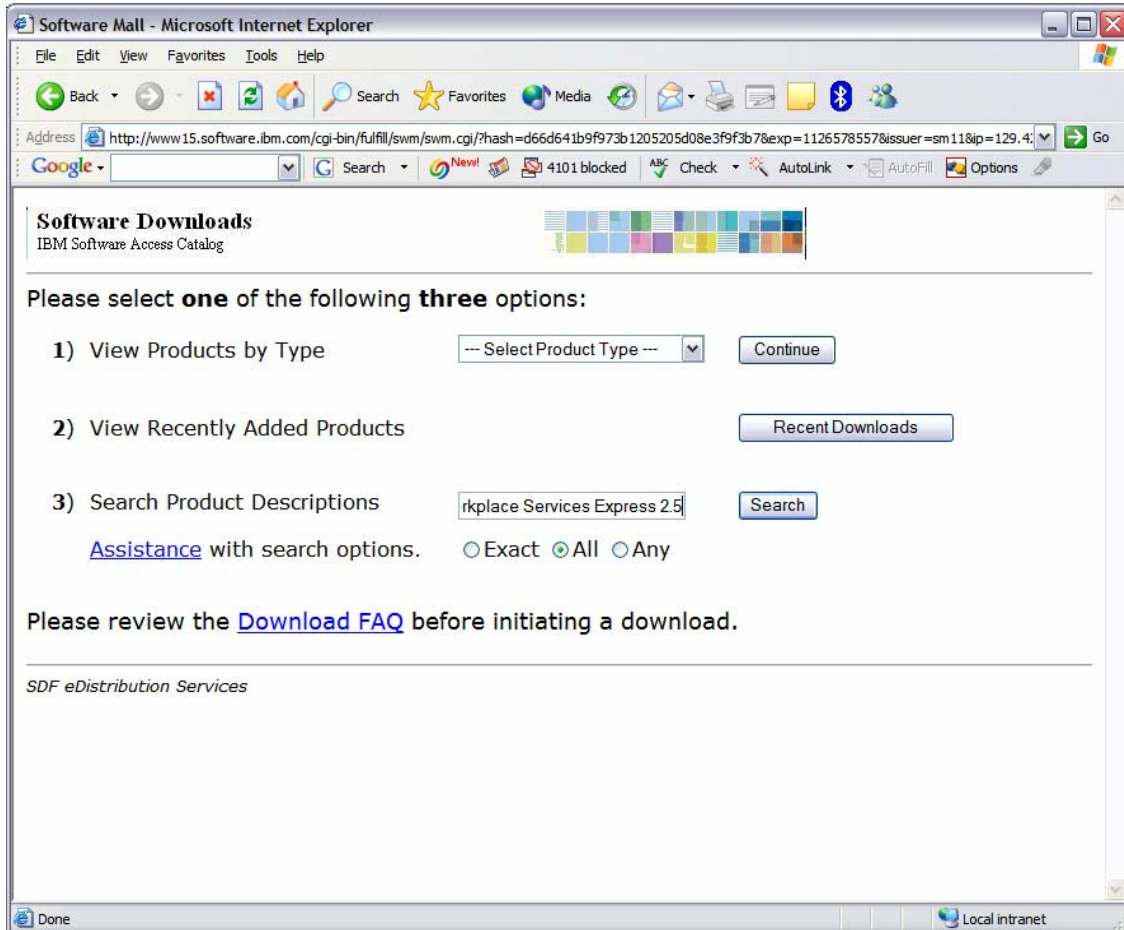


Figure 5: Search Product Descriptions

6. Create a download directory on your PC, for example:
C:\downloads
7. Create an install directory to extract the download images on your PC, for example:
C:\WSE

Downloading IBM Workplace Collaboration Services V2.5 for iSeries from the IBM Software Access Catalog

8. Click on **IBM Workplace Services Express 2.5 Multiplatform Multilingual eAssembly** (Figure 6).

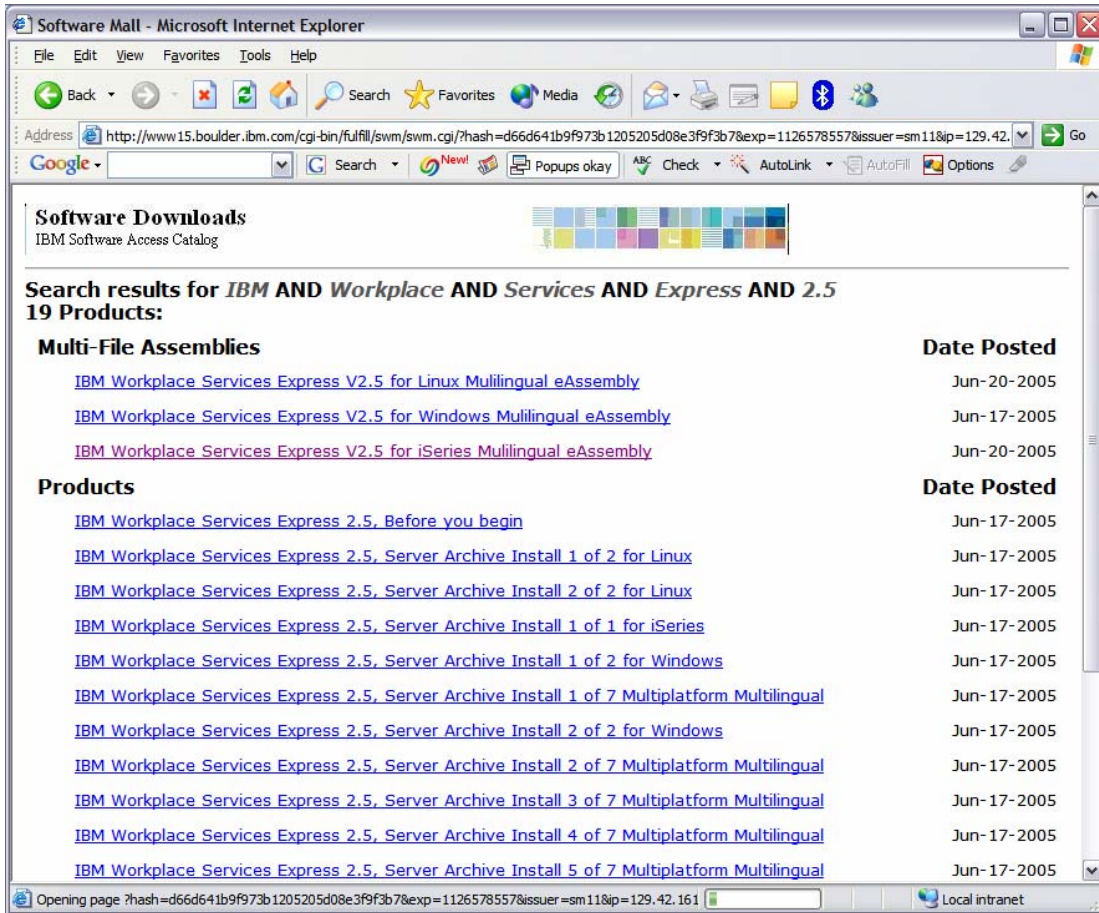


Figure 6: Search results

Downloading IBM Workplace Collaboration Services V2.5 for iSeries from the IBM Software Access Catalog

9. Click on the **Accept Terms** button (Figure 7).

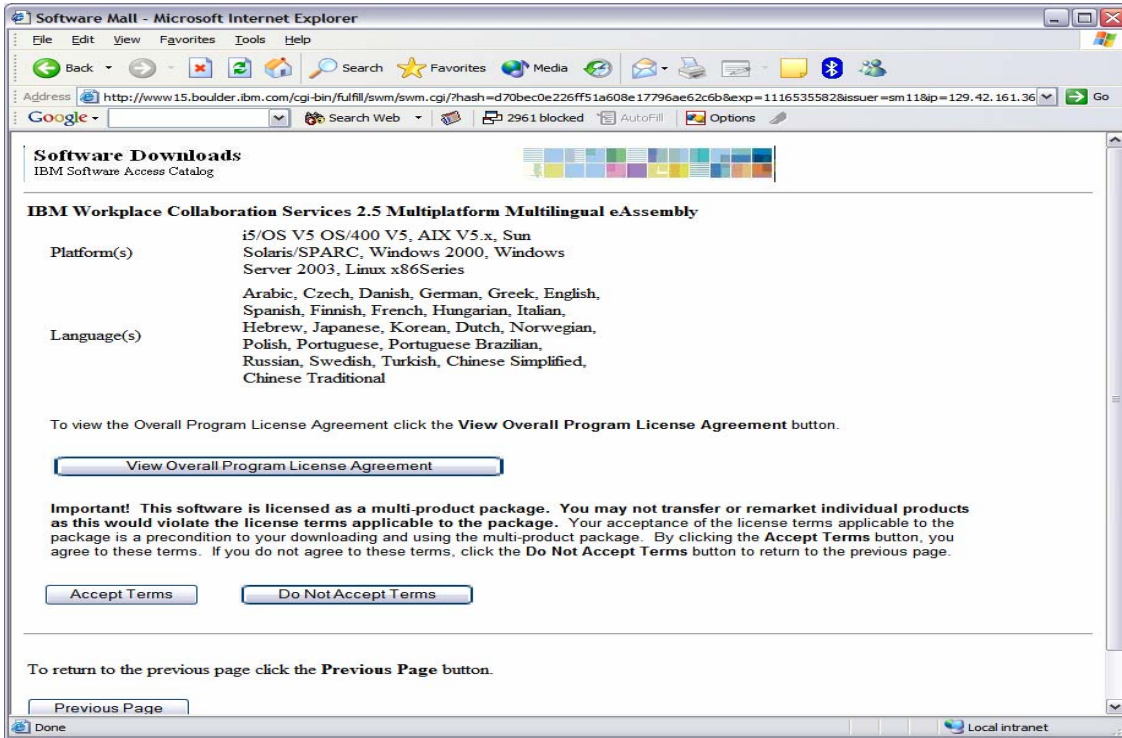


Figure 7: Accept Terms

Downloading IBM Workplace Collaboration Services V2.5 for iSeries from the
IBM Software Access Catalog

10. Download the following files:

Download 2 of 11:	Workplace Services Express V2.5, Server Install and Migration Tools for Microsoft® Windows®
File Name	C84B3ML.exe
File Size	232,816,640 bytes
Download 3 of 11:	Workplace Services Express V2.5, Server Archive Install 1 of 7 Multiplatform Multilingual
File Name	C84B5ML.tar.gz
File Size	57,850,064 bytes
Download 4 of 11:	Workplace Services Express V2.5, Server Archive Install 2 of 7 Multiplatform Multilingual
File Name	C84B6ML.tar.gz
File Size	251,493,176 bytes
Download 5 of 11:	Workplace Services Express V2.5, Server Archive Install 3 of 7 Multiplatform Multilingual
File Name	C84B7ML.tar.gz
File Size	420,351,676 bytes
Download 6 of 11:	Workplace Services Express V2.5, Server Archive Install 4 of 7 Multiplatform Multilingual
File Name	C84B8ML.tar.gz
File Size	462,640,464 bytes
Download 7 of 11:	Workplace Services Express V2.5, Server Archive Install 5 of 7 Multiplatform Multilingual
File Name	C884B9ML.tar.gz
File Size	62,697,994 bytes
Download 8 of 11:	Workplace Services Express V2.5, Server Archive Install 6 of 7 Multiplatform Multilingual
File Name	C84BAML.tar.gz
File Size	603,486,176 bytes
Download 9 of 11:	Workplace Services Express V2.5, Server Archive Install 7 of 7 Multiplatform Multilingual
File Name	C84BBML.tar.gz
File Size	126,739,103 bytes
Download 10 of 11:	Workplace Services Express V2.5, Server Archive Install 1 of 1 for iSeries
File Name	C84BGML.tar
File Size	84,305,920 bytes
Download 11 of 11:	Workplace Services Express V2.5, WebSphere Application Server Enterprise Enablement for iSeries
File Name	C84BHML.tar
File Size	665,528,320 bytes

Creating Workplace Services Express install files

To create your Workplace Services Express install files:

1. Create the directory **LWPArchives** under the install directory:
C:\WSE\LWPArchives
2. Move or copy the tar.gz images to the LWPArchives directory and rename each as follows. Rename the tar.gz files in place without making a separate copy (Figure 8).

Part Number	Rename to this file name:
C84B5ML.tar.gz	LWP_Archive_Common1.tar.gz
C84B6ML.tar.gz	LWP_WAS_Archive_Common1.tar.gz
C84B7ML.tar.gz	LWP_WAS_Archive_Common2.tar.gz
C84B8ML.tar.gz	LWP_WPS_Archive_Common1.tar.gz
C84B9ML.tar.gz	WAS_Archive_Common1.tar.gz
C84BAML.tar.gz	WPS_Archive_Common1.tar.gz
C84BBML.tar.gz	LWP_Upgrade_Archive_Common1.tar.gz

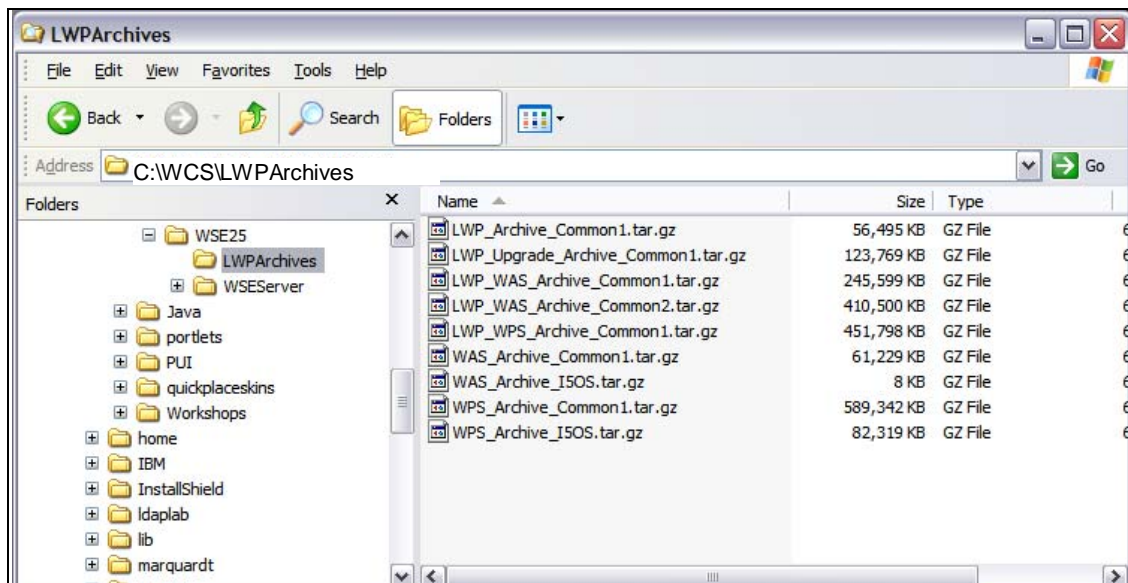
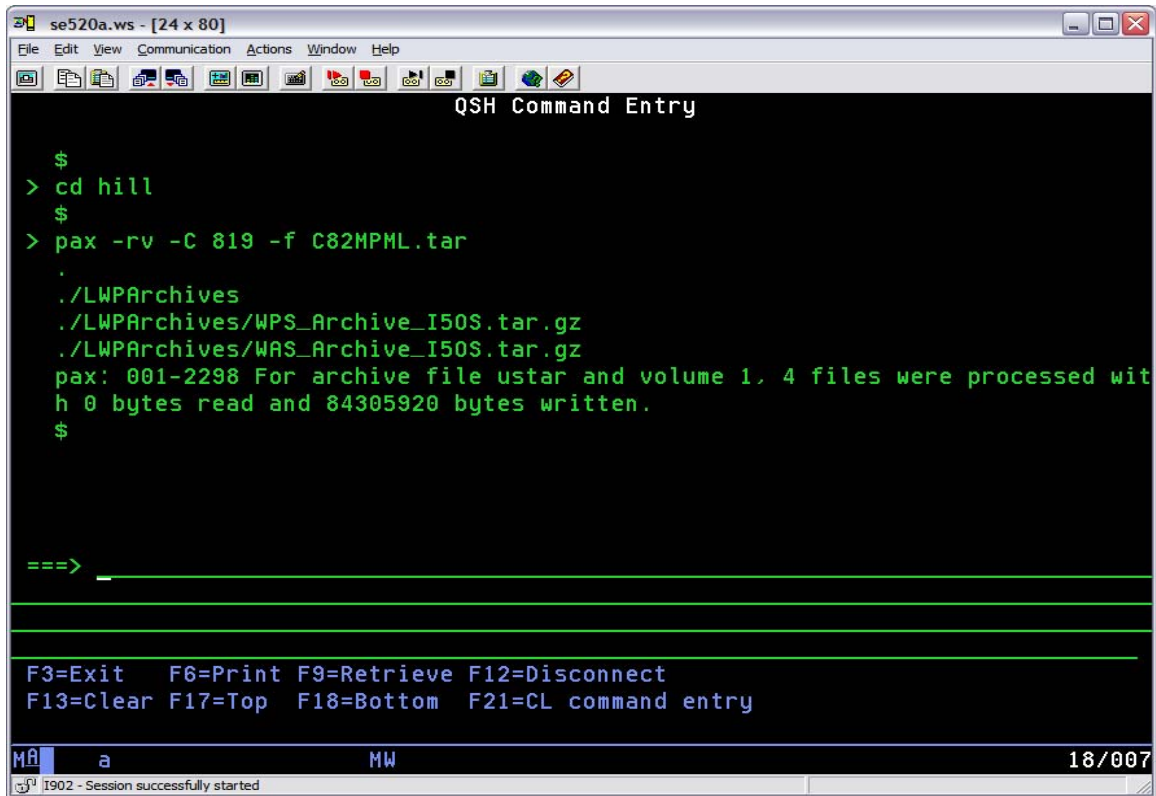


Figure 8: LWP Archives directory listing

Downloading IBM Workplace Collaboration Services V2.5 for iSeries from the IBM Software Access Catalog

3. Extract the tar image from the C82MPML.tar to the WSE directory. Preserve the folder structure.
 - a. Copy the .tar file to the Integrated File System (IFS) on your iSeries system.
 - b. On the command line enter: **STRQSH**
 - c. Change the directory (using the CD command) so that it reflects where the .tar file is located.
 - d. Run: **pax -rv -C 819 -f C82MPML.tar** (Figure 9)



```
se520a.ws - [24 x 80]
File Edit View Communication Actions Window Help
QSH Command Entry

$
> cd hill
$
> pax -rv -C 819 -f C82MPML.tar
.
./LWPArchives
./LWPArchives/WPS_Archive_I50S.tar.gz
./LWPArchives/WAS_Archive_I50S.tar.gz
pax: 001-2298 For archive file ustar and volume 1, 4 files were processed with
h 0 bytes read and 84305920 bytes written.
$

===>

F3=Exit F6=Print F9=Retrieve F12=Disconnect
F13=Clear F17=Top F18=Bottom F21=CL command entry

Mâ a MW 18/007
I902 - Session successfully started
```

Figure 9: QSH command entry

Downloading IBM Workplace Collaboration Services V2.5 for iSeries from the IBM Software Access Catalog

5. Copy the two newly created files in the **LWPArchives** directory back to the C:\WSE\LWPArchives directory on your PC (Figure 10).

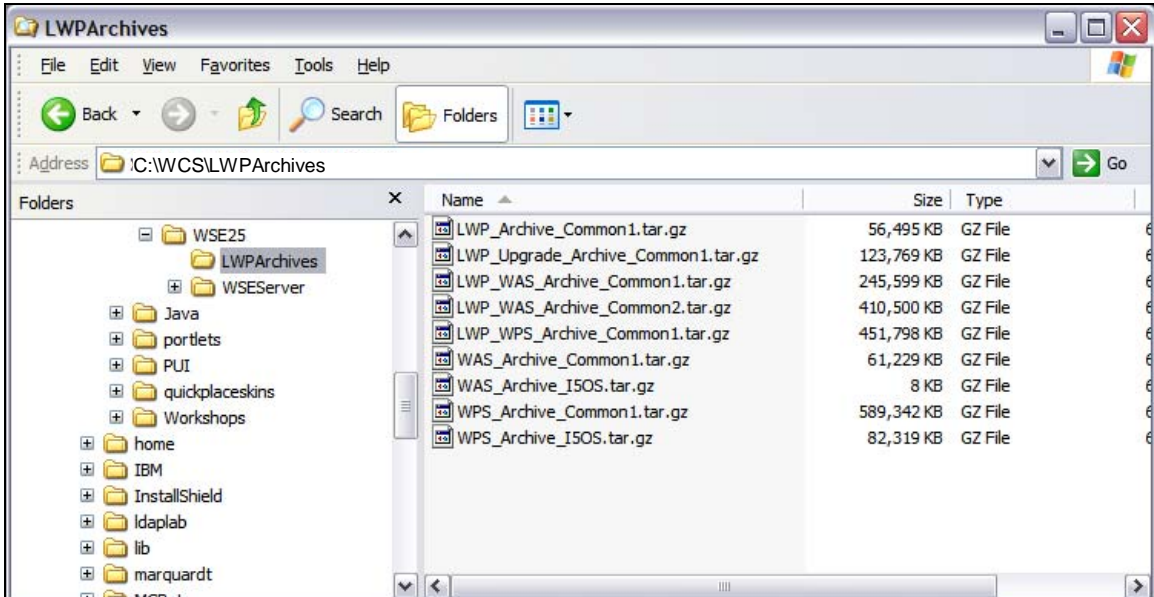


Figure 10: LWPArchives directory

Downloading IBM Workplace Collaboration Services V2.5 for iSeries from the IBM Software Access Catalog

6. Extract the tar image from the C84B3ML.tar to the WSE directory. Preserve its folder structure.
 - a. Copy the tar file to the IFS on your iSeries system.
 - b. On the command line, enter: **STRQSH**
 - c. Copy the directory (using the CD command) to the directory where the tar file is located.
 - d. Run: **pax -rv -C 819 -f C84BGML.tar** (Figure 11)

```
se520a.ws - [24 x 80]
File Edit View Communication Actions Window Help
QSH Command Entry

./WSEServer/dist
./WSEServer/dist/linuxwinstall.bin
./WSEServer/dist/wseinstall.jar
./WSEServer/dist/media.inf
./WSEServer/dist/winwinstall.exe
./WSEServer/dist/java-1.4.2-win.zip
./WSEServer/dist/java-1.4.2-linux.tar.gz
./WSEServer/legalreadme.pdf
./WSEServer/installresponse.txt
./WSEServer/install.sh
./WSEServer/install.bat
./WSEServer/install400.bat
pax: 001-2298 For archive file ustar and volume 1, 182 files were processed with 0 bytes read and 232816640 bytes written.

==>

F3=Exit  F6=Print  F9=Retrieve  F12=Disconnect
F13=Clear  F17=Top  F18=Bottom  F21=CL command entry

MA a MW 18/007
i902 - Session successfully started
```

Figure 11: WCS directory

Downloading IBM Workplace Collaboration Services V2.5 for iSeries from the IBM Software Access Catalog

7. Copy the WSEServer directory and all of the contents to your install directory. The result is this structure shown in the WSE directory (Figure 12):

C:\WSE\LWPArchives
C:\WSE\WSEServer

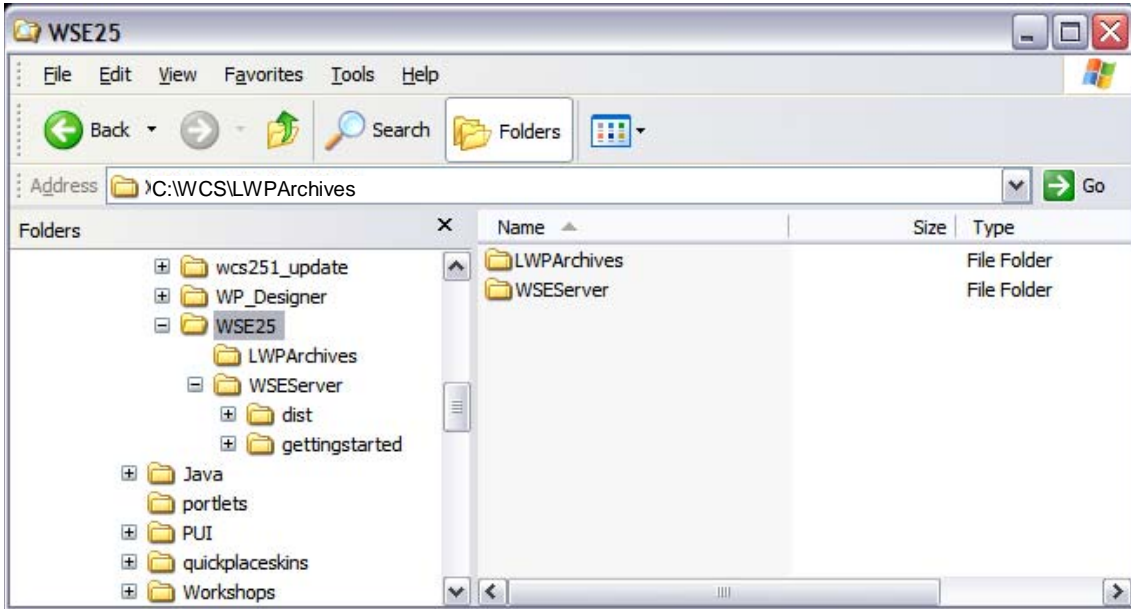


Figure 12: WSE25 directory

WebSphere Enterprise Enablement install files

If you need to install WebSphere Application Server Base for iSeries V5.0, you also need to create the CDs to install this code.

(Note: C54KDML.exe and C54KEML.exe are self-extracting files. C54KDML.exe is CD 1 for the WebSphere Application Server install. C54KEML.exe is CD 2 for the WebSphere Application Server install.)

1. Run C54KDML.exe and extract to C:\WAS CD1 directory (Figure 13)
2. Run C54KEML.exe and extract to C:\WAS CD2 directory (Figure 14)
3. You can burn a CD or install directly from the files on your PC.



Figure 13: WAS CD1 directory contents

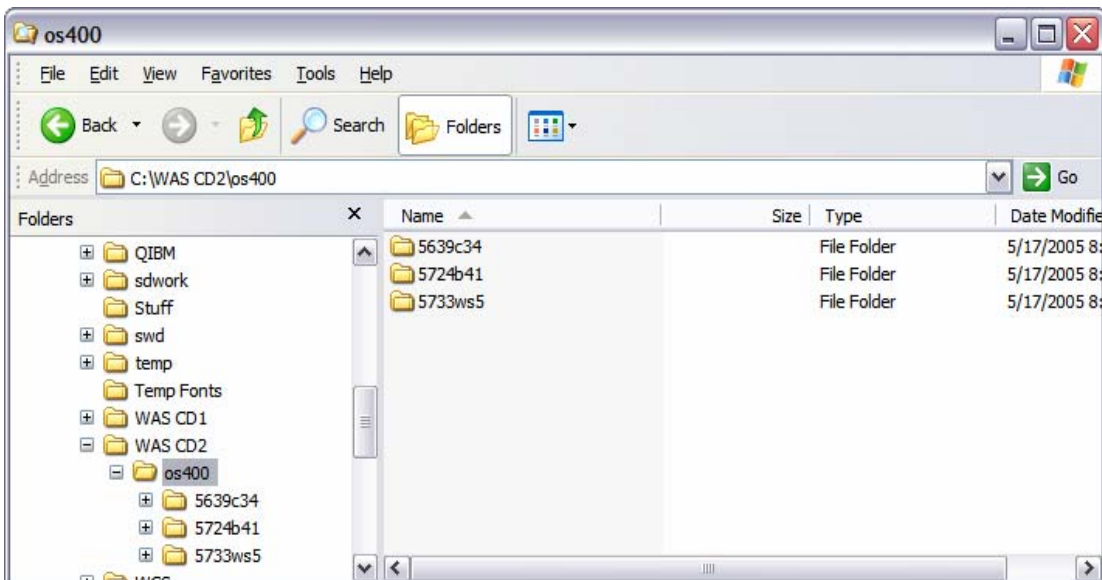


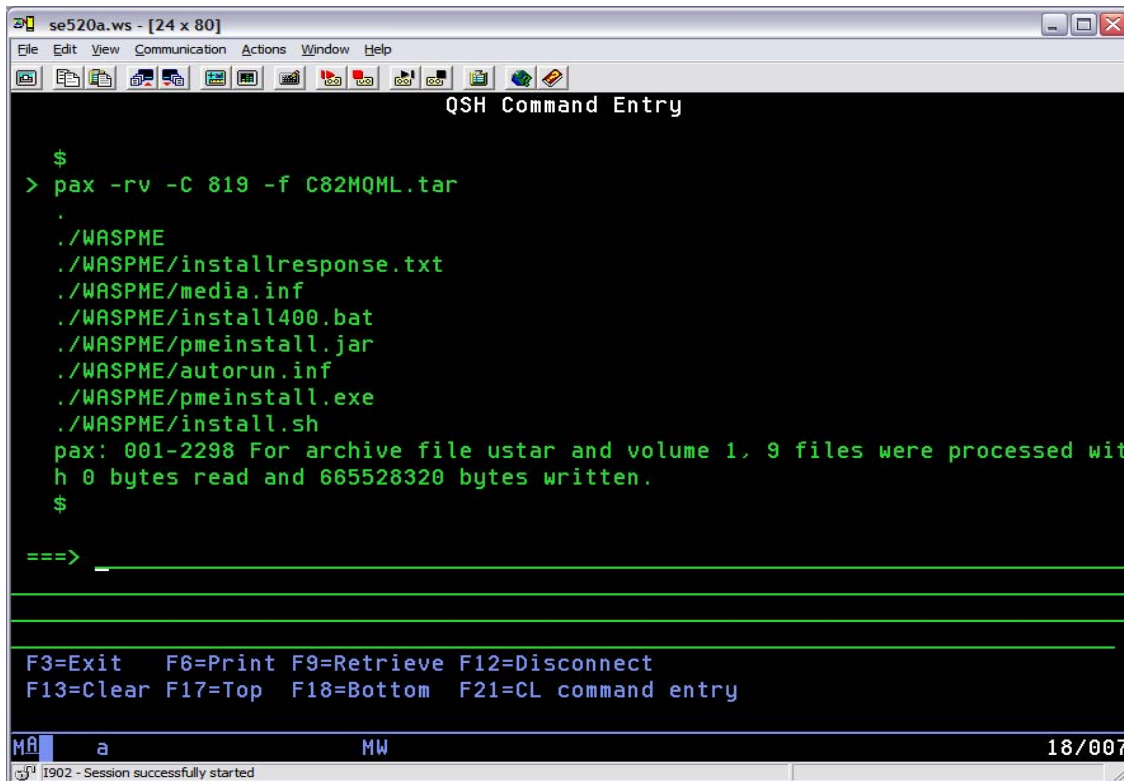
Figure 14: WAS CD2 os400 directory contents

WebSphere Enterprise Enablement install files

You will need to install WebSphere Enterprise Enablement before installing Workplace Services Express. If you do not have this installed on your iSeries system, you need to download the install code.

C82MQML.tar contains WebSphere Enterprise Enablement.

1. Extract the .tar image from the C82MPML.tar and burn these files to a CD.
 - a. Copy the .tar file to the IFS on your iSeries system.
 - b. On the command line enter: **STRQSH**
 - c. Change the directory (using the CD command) so that it reflects the location of the .tar file.
 - d. Run: **pax -rv -C 819 -f C82MQML.tar** (Figure 15)



```
se520a.ws - [24 x 80]
File Edit View Communication Actions Window Help
QSH Command Entry

$
> pax -rv -C 819 -f C82MQML.tar
.
./WASPME
./WASPME/installresponse.txt
./WASPME/media.inf
./WASPME/install400.bat
./WASPME/pmeinstall.jar
./WASPME/autorun.inf
./WASPME/pmeinstall.exe
./WASPME/install.sh
pax: 001-2298 For archive file ustar and volume 1, 9 files were processed with
0 bytes read and 665528320 bytes written.
$

===>

F3=Exit F6=Print F9=Retrieve F12=Disconnect
F13=Clear F17=Top F18=Bottom F21=CL command entry

M A a MW 18/007
I902 - Session successfully started
```

Figure 15: QSH Command Entry screen

2. Copy the WASPME directory and files to your PC.
3. You can now burn a CD or install directly from the files on your PC.

Summary

You have now successfully downloaded and prepared the media for installing IBM Workplace Services Express V2.5. This software offering is a single product that provides a full range of integrated ready-to-use communication and collaboration tools. With the flexibility to deploy any mix of capabilities, it provides a ready-made foundation to build customized role-based Workplace environments that provide the tools and information people need to do their work more efficiently, anytime, anywhere.

Trademarks and disclaimers

IBM Corporation 1994-2005. All rights reserved.

References in this document to IBM products or services do not imply that IBM intends to make them available in every country.

The following terms are trademarks or registered trademarks of International Business Machines Corporation in the United States, other countries, or both: IBM, the IBM logo, eServer, Workplace, PartnerWorld, WebSphere, and iSeries.

Microsoft, Internet Explorer, Windows, Windows NT, and the Windows logo are trademarks of Microsoft Corporation in the United States, other countries, or both.

Other company, product, or service names may be trademarks or service marks of others.

Information is provided "AS IS" without warranty of any kind.