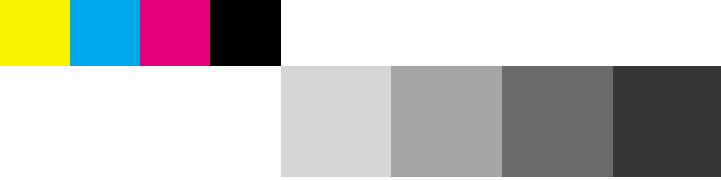


# Optimize iSeries output with Infoprint technology.

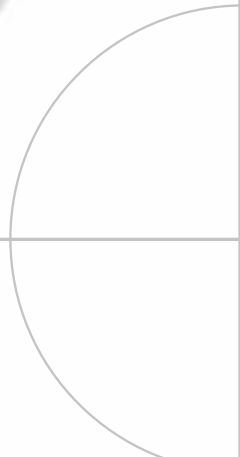




## ***e-business ready***

The business landscape is shifting, becoming more technologically efficient and embracing e-business practices and models. Essential to e-business restructuring is the need to adjust the flow of output to systems, suppliers and customers. For example, output that was formerly printed may now need to be produced and distributed electronically.

The IBM® **@server** iSeries was designed so that companies can spend their time solving critical business problems rather than integrating computing technology. Typically, most dollars spent on technology infrastructure go toward integration, testing and support, leaving only a portion of the budget for new functionality. Printing and presentation solutions for the iSeries extend the e-business values of integration, scalability and flexibility to output production and management, making them ideal solutions for companies engaging in the next chapter of e-business.



### **Providing an architecture for e-business output**

Printing in the e-business landscape is just as much about the management of information flow as it is about output. Not only must output be produced electronically and in hard copy, but it also must be distributed throughout the enterprise. Different destinations for that information may require different presentation formats.

To address these requirements, the iSeries printing architecture has been extended into an information management architecture. This transformation has been comprehensive, including changes in core components such as IBM OS/400® and Print Services Facility™/400, as well as the addition of IBM Infoprint® and Content Management technologies. The result—reliable delivery of information—remains the same.

### **Optimizing network printing performance**

The expectation of iSeries printing is simply that each page will be managed completely and accurately to its destination. However, network printers communicate using TCP/IP protocols that were not designed with the interactive communications required for delivering reliable printing. Fortunately, iSeries servers use a bidirectional print management architecture—Intelligent Printer Data Stream™ (IPDS™).

IPDS provides a layer of two-way communication between server and printer that addresses limitations of TCP/IP communications. In fact, TCP/IP attachment has become the iSeries standard, even for high-speed production printers. Using IPDS, printing performance, reliability and management can be assumed.

### **Presenting iSeries output solutions that make good business sense**

The same benefits that drove your commitment to iSeries—flexibility, scalability, integration, and ease of use—extend to Infoprint output technologies. Through OS/400 and PSF/400, the iSeries provides unparalleled industrial-strength printing and output capabilities. Infoprint Designer for iSeries and other design tools allow you to create the fully electronic, complex documents that are a prerequisite for e-business communications. Infoprint Server for iSeries provides critical downstream electronic output via PDF, e-mail and Web presentation. And standard iSeries interfaces, including iSeries Navigator and Web Access, are fully integrated with these electronic output formats. Providing complete, end-to-end output capabilities makes good business—and e-business—sense.

### **iSeries presentation advantages at a glance**

- Designed for the demands of business and e-business
- Integrated for performance, productivity and ease of use
- Scalability—from desktop to the highest production printing speeds
- Compatibility, forwards and backwards, with each OS/400 release
- Proven IBM Infoprint output management technology
- IPDS architecture for managed delivery and full error recovery
- Complete output architecture from design to printing to electronic presentation



# Output solutions for iSeries

## Infoprint Server for iSeries

Includes PDF transforms, integrated e-mail output, Web-ready output, networked printing support and the ability to make Web-based images iSeries compatible.

## Infoprint Designer for iSeries

Includes Forms Editor, which handles business forms in native AFP format; Image Editor, a comprehensive workbench for image design; and Layout Editor, which graphically combines all page elements, including application data, into the final output.

## Print Services Facility for OS/400

The print manager for AFP on iSeries servers. PSF/400 supports TCP/IP-based network printing with the functionality of twinax-attached printers.

## Advanced Print Utility

An interactive end-user system for transforming existing simple, pre-printed, form-based output to electronic output.

## IBM Page Printer Formatting Aid for iSeries

An application-independent tool that lets you convert output using AFP page and form definitions.

## IBM AFP Print Utilities

Provides utilities that enable electronic forms design, query-based generation of bar-coded printing applications and iSeries management of forms and images.

## IBM AFP Font Collection

Provides fonts that can be used by all Advanced Function Presentation products.

## IBM AFP PrintSuite

A family of advanced print-enabling tools that facilitates moving applications from traditional line-at-a-time printing to effective, full-page documents.

## For more information

For more information about iSeries presentation solutions, contact your local IBM sales representative. To learn more about IBM printing solutions, call 1 800 358-6661, or visit:

[ibm.com/eserver/iseries/printing](http://ibm.com/eserver/iseries/printing)



© Copyright IBM Corporation 2002

IBM Printing Systems  
Dept. HT7/001H  
P.O. Box 1900  
Boulder, CO 80301-9191

Printed in the United States of America  
06-02  
All Rights Reserved

IBM, the IBM logo, Advanced Function Presentation, AFP, AS/400, the e-business logo, Infoprint, Intelligent Printer Data Stream, IPDS, OS/400, Print Services Facility and iSeries are trademarks or registered trademarks of International Business Machines Corporation in the United States, other countries, or both.

Other company, product and service names may be trademarks or service marks of others.

References in this publication to IBM products or services do not imply that IBM intends to make them available in all countries in which IBM operates.

Printed on an IBM Infoprint® Color System Full-Color Digital Printer.