

Infoprint Manager Print-on-Demand

Feature:

Submit for Windows

README

Contents

Infoprint Manager Print-on-Demand

Feature:

Submit for Windows

| | |
|---|----------|
| README | 1 |
| Windows requirements | 1 |
| Installing Infoprint Submit for Windows | 2 |

| | |
|--|---|
| Installing a service update for Infoprint Submit. . . | 2 |
| Installing associated software and printer drivers . . . | 2 |
| Starting Infoprint Submit | 3 |
| Notices | 4 |
| Trademarks. | 6 |

Submit for Windows README Infoprint Manager Print-on-Demand Feature:

This file contains information that you need to install Infoprint Submit, plus additional information not included in the product documentation.

Note: IBM will update the web version of this document regularly.

This README file contains the following sections:

- “Windows requirements”
- “Installing Infoprint Submit for Windows” on page 2
- “Starting Infoprint Submit” on page 3

Refer to the *Print-on-Demand Feature: Submit for Windows User's Guide* for instructions on additional configuration tasks that are necessary to take advantage of all the features of Infoprint Submit.

The Infoprint Manager Print-on-Demand Feature consists of the following three clients:

- IBM® Infoprint® Submit Express for the Windows® Operating System
- IBM Infoprint Submit for the Windows Operating System
- IBM Infoprint Submit for the Macintosh Operating System

The Infoprint Submit Express for the Windows Operating System client contains several enhancements to usability, serviceability, and reliability from the previous Windows version. If you are a new Windows user of the Print-on-Demand Feature, we recommend that you use the new Submit Express client. For instructions on using Submit Express for Windows, refer to the *Infoprint Manager Print-on-Demand Feature: Submit Express for Windows User's Guide*.

The Infoprint Submit Express for the Windows Operating System client is replacing the Infoprint Submit for Windows client; however, this client continues to be included with Infoprint Manager and is supported.

The Infoprint Submit for Macintosh client is still available. For instructions on using Infoprint Submit for Macintosh, refer to the *Infoprint Manager Print-on-Demand Feature: Submit for Macintosh User's Guide*.

IBM Infoprint Submit for the Windows Operating System will hereafter be referred to as Infoprint Submit.

Windows requirements

Infoprint Submit has these minimum requirements:

- 486-66 MHz processor
- PC running Windows NT 4.0 Service Pack 6A or later, or Windows 2000
- 16 MB RAM
- CD-ROM

- 3.5-inch diskette drive
- 10 MB hard drive space
- Local area network (LAN) connection (Ethernet or token-ring)
- TCP/IP
- Access to the Infoprint AIX Server

Installing Infoprint Submit for Windows

This section contains information that you need to install Infoprint Submit.

Insert the appropriate Infoprint Manager Print-on-Demand Feature (1 of 2) CD-ROM into the drive. The install program starts automatically.

1. Select **Infoprint Submit**.
2. Follow the instructions as directed from the installer.

Installing a service update for Infoprint Submit

To install a service update, insert the PTF CD-ROM into the drive. The install program starts automatically.

1. Select **Install Infoprint Submit**.
2. Follow the instructions as directed from the installer.

Notes:

- a. With Infoprint Manager for AIX, you must have the Version 4.1 level of Infoprint Submit installed for the service update to install correctly. If you are currently using Version 3.2, first install the Version 4.1 product and then install the service update as described above.
- b. With Infoprint Manager for Windows, you must have the Version 2.1 level of Infoprint Submit installed for the service update to install correctly.

Installing associated software and printer drivers

If you wish to create PostScript jobs for Infoprint Manager, you should install printer drivers and PostScript Printer Description files (PPDs) on each of the systems that you use for this purpose. Printer drivers are needed on the workstations that are used to submit jobs to the Infoprint Manager server to ensure that the correct driver is used. In addition, if you have users who are producing PostScript files on their workstations that they want printed on the Infoprint Manager printers, you need to load Infoprint Manager printer drivers onto these workstations.

IBM provides an Adobe PostScript Driver installer on the Infoprint Manager Print-on-Demand Feature CD-ROM, in the directory **win\drivers\postscript**. This installer can be used to install one of four IBM-supplied PPDs or a generic PostScript print driver.

To begin the installation, double-click on the self-extracting **winsteng.exe** file, and follow the installation instructions. When asked to select a printer, you can choose the generic driver, or click the Browse button and navigate to the **win\drivers\postscript** directory to select a PPD for the Infoprint 60, InfoColor 70, Infoprint 4000, or Infoprint 4100 printer.

IBM also provides AFP Workbench for Windows. The AFP Workbench viewer displays AFP and ASCII files, including overlays and page segments, in a WYSIWYG format. To install this tool, go to the directory **win/workbench** and double-click on the **setup.exe** file.

Starting Infoprint Submit

Use the following procedure to start Infoprint Submit:

1. Click the icon labeled **Infoprint Submit** that was placed on your desktop when you installed Infoprint Submit. On Windows, you can also go to **Start** —> **Programs** and click on **Infoprint Submit**.
2. When you start the program the first time, the following message displays:



Figure 1. Message displayed first time Infoprint Submit starts

3. Click **OK** and Infoprint Submit opens.
4. Go to the **Options** menu, and select **Setup...** The **Settings** dialog displays:

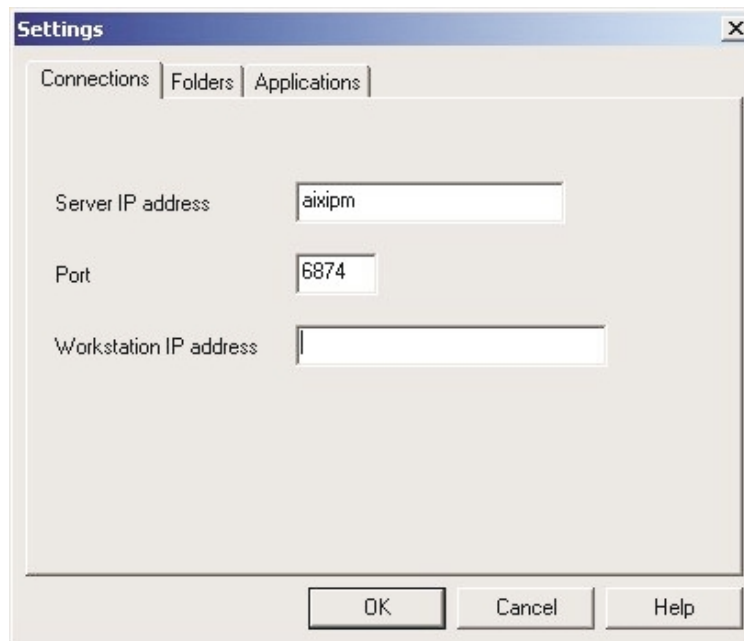


Figure 2. Settings dialog showing the Connections tab

5. Enter the Server IP address for your Infoprint Manager Server.
6. Let the port number default.
7. Specify the IP address of your local work station.
8. Click the **Folders** tab.

9. Enter **/ipdata** for the **Server uses** field.

Note: Always enter **/ipdata** for **Server uses** regardless of whether you are using Infoprint Manager for AIX or Infoprint Manager for Windows.

10. Click **OK** to return to the main Infoprint Submit screen.
11. Go to the **Options** menu again, and this time select **Preferences....** The **Preferences** dialog appears:

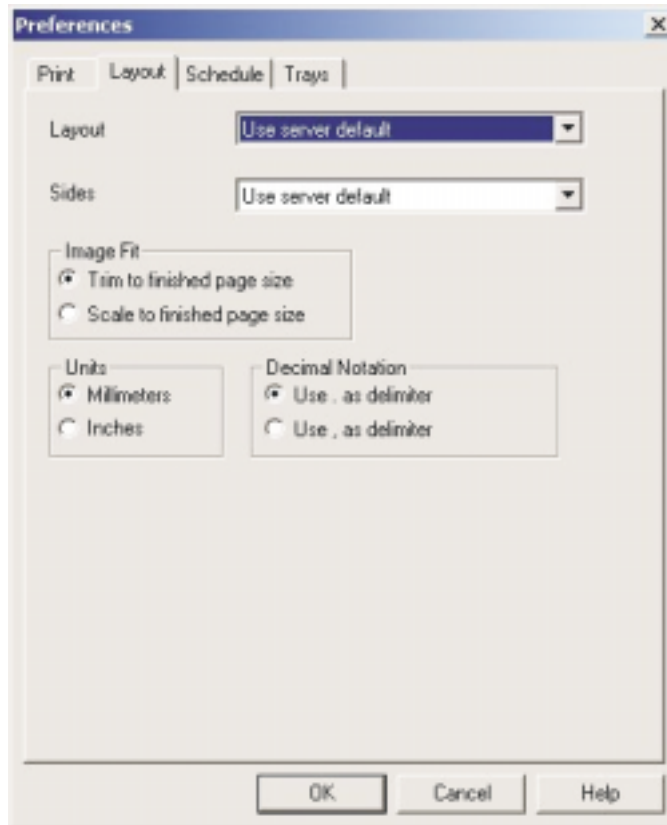


Figure 3. Preferences dialog showing Layout tab

12. Select your preferences for **Image Fit**, **Units**, and **Decimal Notation**.
13. Click **OK** and Infoprint Submit displays the following message: **New job tickets will use these preferences.**
14. Click **OK** on the message to return to the main Infoprint Submit screen.

Notices

This information was developed for products and services offered in the U.S.A.

IBM may not offer the products, services, or features discussed in this document in other countries. Consult your local IBM representative for information on the products and services currently available in your area. Any reference to an IBM product, program, or service is not intended to state or imply that only that IBM product, program, or service may be used. Any functionally equivalent product, program, or service that does not infringe any IBM intellectual property rights may be used instead. However, it is the user's responsibility to evaluate and verify the operation of any non-IBM product, program, or service.

IBM may have patents or pending patent applications covering subject matter described in this document. The furnishing of this document does not give you any license to these patents. You can send license inquiries, in writing, to:

IBM Director of Licensing
IBM Corporation
North Castle Drive
Armonk, NY 10504-1785 U.S.A.

The following paragraph does not apply to the United Kingdom or any other country where such provisions are inconsistent with local law:

INTERNATIONAL BUSINESS MACHINES CORPORATION PROVIDES THIS PUBLICATION "AS IS" WITHOUT WARRANTY OF ANY KIND, EITHER EXPRESS OR IMPLIED, INCLUDING, BUT NOT LIMITED TO, THE IMPLIED WARRANTIES OF NON-INFRINGEMENT, MERCHANTABILITY OR FITNESS FOR A PARTICULAR PURPOSE. Some states do not allow disclaimer of express or implied warranties in certain transactions, therefore, this statement may not apply to you.

This information could include technical inaccuracies or typographical errors. Changes are periodically made to the information herein; these changes will be incorporated in new editions of the publication. IBM may make improvements and/or changes in the product(s) described in this publication at any time without notice.

Any references in this information to non-IBM Web sites are provided for convenience only and do not in any manner serve as an endorsement of those Web sites. The materials at those Web sites are not part of the materials for this IBM product and use of those Web sites is at your own risk.

IBM may use or distribute any of the information you supply in any way it believes appropriate without incurring any obligation to you.

For license inquiries regarding double-byte (DBCS) information, contact the IBM Intellectual Property Department in your country or send inquiries, in writing, to:

IBM World Trade Asia Corporation
Licensing
2-31 Roppongi 3-chome, Minato-ku
Tokyo 106, Japan

Licensees of this program who wish to have information about it for the purpose of enabling: (i) the exchange of information between independently created programs and other programs (including this one) and (ii) the mutual use of the information which has been exchanged, should contact:

IBM Corporation
Department 11PA Building 002S
PO Box 1900
Boulder CO 80301 USA

Such information may be available, subject to appropriate terms and conditions, including in some cases, payment of a fee. The licensed program described in this document and all licensed material available for it are provided by IBM under terms of the IBM Customer Agreement, IBM International Program License Agreement or any equivalent agreement between us.

Any performance data contained herein was determined in a controlled environment. Therefore, the results obtained in other operating environments may vary significantly. Some measurements may have been made on development-level systems and there is no guarantee that these measurements will be the same on generally available systems. Furthermore, some measurement may have been estimated through extrapolation. Actual results may vary. Users of this document should verify the applicable data for their specific environment.

Information concerning non-IBM products was obtained from the suppliers of those products, their published announcements or other publicly available sources. IBM has not tested those products and cannot confirm the accuracy of performance, compatibility or any other claims related to non-IBM products. Questions on the capabilities of non-IBM products should be addressed to the suppliers of those products.

All statements regarding IBM's future direction or intent are subject to change or withdrawal without notice, and represent goals and objectives only.

This information is for planning purposes only. The information herein is subject to change before the products described become available.

If you are viewing this information softcopy, the photographs and color illustrations may not appear.

For online versions of this book, we authorize you to:

- Copy, modify, and print the documentation contained on the media, for use within your enterprise, provided you reproduce the copyright notice, all warning statements, and other required statements on each copy or partial copy.
- Transfer the original unaltered copy of the documentation when you transfer the related IBM product (which may be either machines you own, or programs, if the program's license terms permit a transfer). You must, at the same time, destroy all other copies of the documentation.

You are responsible for payment of any taxes, including personal property taxes, resulting from this authorization.

Your failure to comply with the terms above terminates this authorization. Upon termination, you must destroy your machine readable documentation.

Trademarks

The following are trademarks or registered trademarks of International Business Machines Corporation:

- Advanced Function Printing
- AFP
- AIX
- AS/400
- IBM
- IBM Cross Platform Technologies for Windows
- Infoprint
- Intelligent Printer Data Stream
- IPDS
- Micro Channel
- MVS

- OS/2
- OS/390
- OS/400
- Print Services Facility
- S/390
- System/370

The following are trademarks of other companies:

- Java and all Java-based trademarks and logos are trademarks or registered trademarks of Sun Microsystems, Inc. in the United States, other countries, or both.
- Microsoft, MS-DOS, Windows, Windows NT, Windows 2000, Windows ME, Microsoft Visual Basic, Microsoft Visual C++, and the Windows logo are trademarks of Microsoft Corporation in the United States, other countries, or both.
- Pentium is a registered trademark of Intel Corporation in the United States, other countries, or both.
- UNIX is a registered trademark of The Open Group in the United States and other countries.

Other company, product, and service names may be trademarks or service marks of others.