



IBM Software Group

IBM WebSphere® Data Interchange V3.3

Audit Trail



@business on demand.

© 2007 IBM Corporation

This presentation will review the WebSphere Data Interchange Audit Trail.

Agenda

- What is the WDI Audit Trail?
- How does the new Audit Trail differ from WDI 3.2?
- How is the Audit Trail activated or configured?
- When is the Audit Trail updated?
- How is the Audit Trail viewed?
- How is the Audit Trail maintained?



The presentation deals with the WebSphere Data Interchange (WDI) Audit Trail.

The following is the agenda for this presentation.

1. First we will look at what this Audit Trail is all about.
2. Look at some of the differences between the newer audit trail and the old one in WDI version 3.2
3. Talk about how to configure and activate the audit trail.
4. See when the audit trail is updated.
5. Viewing the audit trail
6. And finally how to maintain the Audit trail in your system.

What is the WDI Audit Trail

- The WDI Audit Trail logs entry for each change to a WDI object
- The Audit Trail is database / system dependent
- Controls on Audit Trail logging include
 - Making it active or inactive
 - Specifying if update reasons must be entered
 - Specifying other options
- Viewing of changes as a separate list
- A tool for maintaining the log entries is provided



1. The Audit trail logs changes made to any WDI objects. The WDI Objects can be anything like a Trading Partner, Send/Receive maps or any other Entity within WDI. Any changes performed on these objects , like Creating a new object or modifying an existing object is logged in to the audit trail.
2. Each System/Database has its own Audit trail system. Hence Audit trail has to be configured separately for each of the systems.
3. Various controls are provided for Audit trail logging which include Activating/Deactivating the logging, Making it Mandatory or Optional for the user to provide reasons for the change and other options like enabling logging of Server initiated changes.
4. These Audit Trail entries can be selected and viewed based on the type of Action performed. For Example you can list all the Audit trail entries created as a result of an update operation on WDI Objects.
5. Perform Command is provided for maintaining Audit trail Log entries.

How does the new Audit Trail differ from WDI 3.2?

- With WDI 3.2, only the last user, date and time of a change were logged
- Only Client changes were logged
- The log feature was not optional

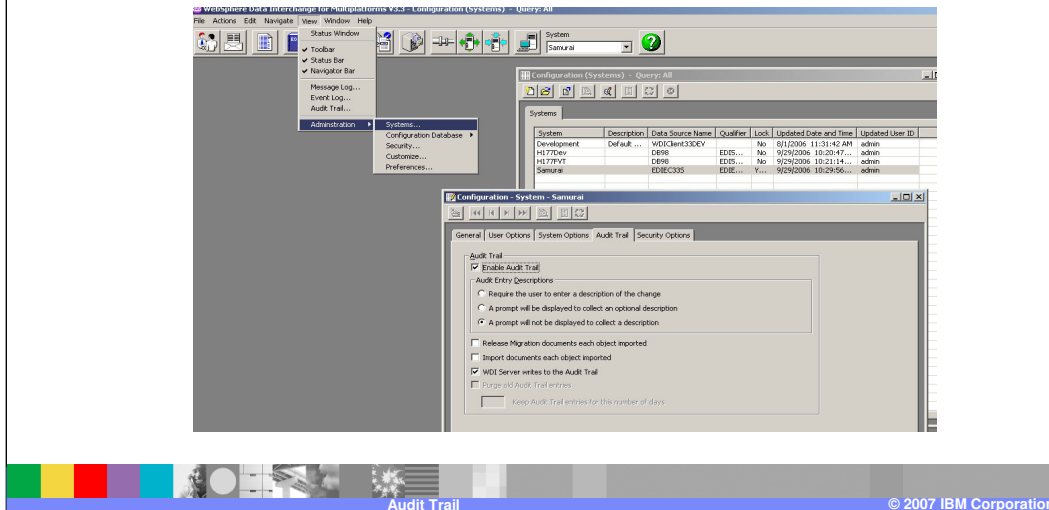


Now let us look at some of the differences between the new Audit trail and the one in WDI version 3.2...

1. In WDI version 3.2 only the last change was logged in the audit trail whereas the new Audit trail keeps track of all the changes made on an object.
2. Only the client initiated changes were logged in WDI version 3.2 whereas in WDI version 3.3 Server initiated changes can be saved too.
3. In WDI version 3.2 Audit trail was always turned on whereas you can chose to inactivate it in WDI version 3.3

How is the Audit Trail activated or configured?

- To activate the Audit Trail on a database
 - Open the System definition of the database, and select the Audit Trail tab



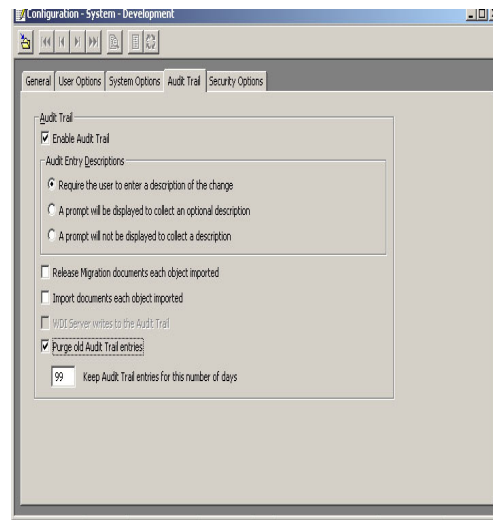
Let us look at configuration options provided for the Audit trail:

To activate Audit trail:

1. Open the System you want to activate Audit trail in. Go to the View Menu, click on the administration and select systems. Double click on the system you want to open.
2. Go to the "Audit trail" Tab page and check on the "Enable Audit trail" checkbox to activate the Audit trail for this system.

How is the Audit Trail activated or configured?

- Is audit trail logging active?
- Choose the option for each entry
 - Must one key a reason?
 - Is a reason optional?
 - Are reasons not required?
- Will all objects be documented?
- Should the Server update the Audit Trail on import?
- Should the Audit Trail be purged automatically after a specified number of days?
- The Development database does not support logging of Server imports.

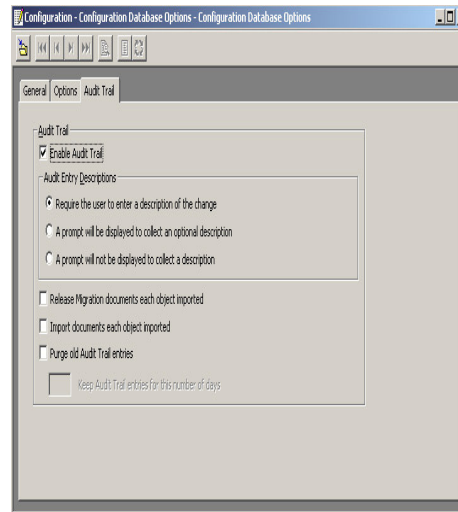


The following are the three options provided under “Audit entry descriptions”. The user is prompted to explain the change made

1. Select the first radio button to make it mandatory to enter a description every time a change is made to any WDI object.
 2. Select the second radio button is to prompt the user for description but make it optional.
 3. Select the third radio button if no description is required.
- Check “Release migration documents each object imported” to create a log entry for each object imported through release migration.
 - Check the second radio box (Import documents each document imported) to log an entry for each object imported instead of a single log record for the entire import process. For example if we import multiple maps in to the system in a single import process a separate log entry is created for each of these maps imported instead of creating a single log entry for the entire import process.

How is the Audit Trail activated or configured?

- The configuration database stores Client objects, like Queries, preferences, and systems
- Options are the same as for Runtime databases, except that the Server Import option is not available



- Select the third check box if you want a log entry created for any changes made by WDI Server. Development database does not support logging of server changes.
- Select the fourth Check box to purge Audit trail entries after a certain number of days. Enter the number of days in the edit box. This option works only for the development database. Use, Perform command to delete audit trail records from the production databases.

When is the Audit Trail updated?

- When enabled, Audit Trail entries are created when an object is changed
- This includes Adds, Deletes, Updates, and Imports
- Export is not logged, nor is Viewing an object
- The Server Import (PERFORM IMPORT) will update the Audit Trail if specified

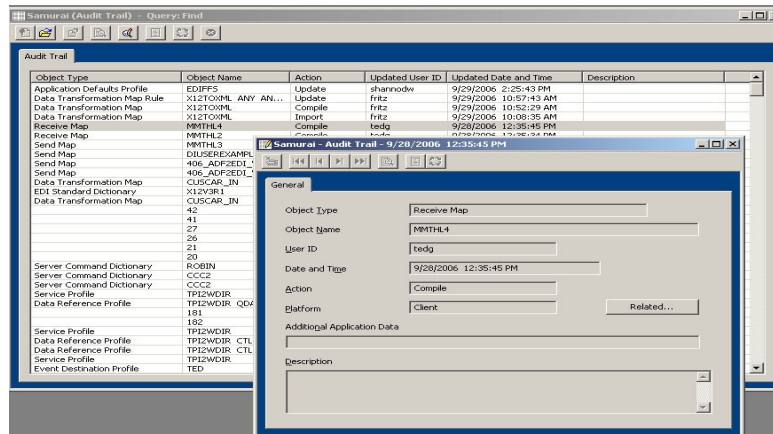


Audit trail entries are created as following:

- When the audit trail is activated in the system, Audit trail entries are created for changes made on all WDI Objects.
- These include any kind of changes like creation, deletion, updates or import of these objects.
- Any actions that do not cause changes are not logged. like export or viewing of objects.
- Import or other changes done using Server is logged only if the option is selected in the Audit trail Configuration.

How is the Audit Trail viewed?

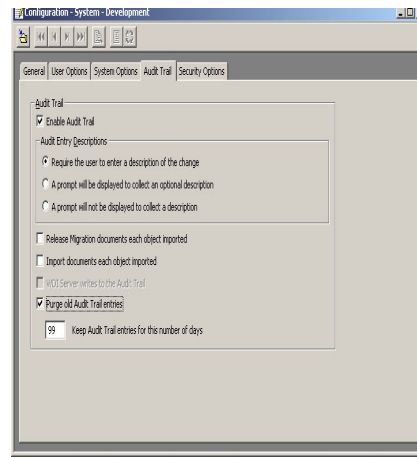
- With the System desired in focus, select View->Audit Trail, and the Audit Trail list window will be displayed
- Double click on an entry to Open the log entry view



- To view the Audit trail entries in a particular system, Select View and click on the Audit trail menu item.
- This displays a dialog to specify selection criteria. You can view entries based on the Object type, Type of Change and Update time period or a combination of these three.
- Double click to open the log entry and view details. It displays read only window to display information.

How is the Audit Trail maintained?

- Audit Trail configuration allows for specification of purging the audit trail entries after a number of days
- A batch job can also be used, by way of the `PERFORM REMOVE AUDIT TRAIL WHERE ...`



To maintain Audit trail:

- In order to maintain audit trail on a “Development environment” select “Purge old audit trial entries” and enter the number of days you want these entries to stay in the database.
- In order to maintain Audit trail on a “Production database” use the “Perform remove audit trail” command. The client does not allow you to delete Audit trail entries on the production database.

Perform Remove Command

- **PERFORM REMOVE AUDIT TRAIL** LOGDATE(*starting date*) TO(*ending date*) LOGUSER(*starting user ID*)

- Examples:

```
PERFORM REMOVE AUDIT TRAIL WHERE  
LOGDATE(12/14/06) TO(12/17/06)
```

```
PERFORM REMOVE AUDIT TRAIL WHERE  
LOGUSER(USR0890)
```



Use Perform Remove Audit Trail to maintain Audit trail tables in a Runtime database. You cannot delete records using the client in a runtime database.

These records can be deleted based on the Logging date or based on the user id.

- In the first example above, all entries created between December 14th 2006 and December 17th 2006 are deleted.
- In the second example, all log entries created as a result of changes made by the user id USR0890 are deleted.

Summary

- An Audit Trail is available for each database and for the Client Configuration database
- When activated, changes to WDI objects log an entry into the Audit Trail
- Server import also logs an entry into an active Audit Log
- Administrators can purge the Audit Trail DB Tables



An Audit Trail is available for each database and for the Client Configuration database. When activated, changes to WDI objects log an entry into the Audit Trail. Server import also logs an entry into an active Audit Log. Administrators can purge the Audit Trail DB Tables

Trademarks, copyrights, and disclaimers

The following terms are trademarks or registered trademarks of International Business Machines Corporation in the United States, other countries, or both:

IBM	CICS	IMS	WMO	Tivoli
IBM (logo)	Cloudscape	Informix	OS/390	WebSphere
e! (logo) business	DB2	iSeries	OS/400	xSeries
AIX	DB2 Universal Database	Lotus	pSeries	zSeries

Java and all Java-based trademarks are trademarks of Sun Microsystems, Inc. in the United States, other countries, or both.

Microsoft, Windows, Windows NT, and the Windows logo are registered trademarks of Microsoft Corporation in the United States, other countries, or both.

Intel, ActionMedia, LANDesk, MMX, Pentium and ProShare are trademarks of Intel Corporation in the United States, other countries, or both.

UNIX is a registered trademark of The Open Group in the United States and other countries.

Linux is a registered trademark of Linus Torvalds.

Other company, product and service names may be trademarks or service marks of others.

Product data has been reviewed for accuracy as of the date of initial publication. Product data is subject to change without notice. This document could include technical inaccuracies or typographical errors. IBM may make improvements and/or changes in the product(s) and/or program(s) described herein at any time without notice. Any statements regarding IBM's future direction and intent are subject to change or withdrawal without notice, and represent goals and objectives only. References in this document to IBM products, programs, or services does not imply that IBM intends to make such products, programs or services available in all countries in which IBM operates or does business. Any reference to an IBM Program Product in this document is not intended to state or imply that only that program product may be used. Any functionally equivalent program, that does not infringe IBM's intellectual property rights, may be used instead.

Information is provided "AS IS" without warranty of any kind. THE INFORMATION PROVIDED IN THIS DOCUMENT IS DISTRIBUTED "AS IS" WITHOUT ANY WARRANTY, EITHER EXPRESS OR IMPLIED. IBM EXPRESSLY DISCLAIMS ANY WARRANTIES OF MERCHANTABILITY, FITNESS FOR A PARTICULAR PURPOSE OR NONINFRINGEMENT. IBM shall have no responsibility to update this information. IBM products are warranted, if at all, according to the terms and conditions of the agreements (e.g., IBM Customer Agreement, Statement of Limited Warranty, International Program License Agreement, etc.) under which they are provided. Information concerning non-IBM products was obtained from the suppliers of those products, their published announcements or other publicly available sources. IBM has not tested those products in connection with this publication and cannot confirm the accuracy of performance, compatibility or any other claims related to non-IBM products. IBM makes no representations or warranties, express or implied, regarding non-IBM products and services.

The provision of the information contained herein is not intended to, and does not, grant any right or license under any IBM patents or copyrights. Inquiries regarding patent or copyright licenses should be made, in writing, to:

IBM Director of Licensing
IBM Corporation
North Castle Drive
Armonk, NY 10504-1785
U.S.A.

Performance is based on measurements and projections using standard IBM benchmarks in a controlled environment. All customer examples described are presented as illustrations of how those customers have used IBM products and the results they may have achieved. The actual throughput or performance that any user will experience will vary depending upon considerations such as the amount of multiprogramming in the user's job stream, the I/O configuration, the storage configuration, and the workload processed. Therefore, no assurance can be given that an individual user will achieve throughput or performance improvements equivalent to the ratios stated here.

© Copyright International Business Machines Corporation 2006. All rights reserved.

Note to U.S. Government Users - Documentation related to restricted rights-Use, duplication or disclosure is subject to restrictions set forth in GSA ADP Schedule Contract and IBM Corp.

