



IBM System i™

## IBM iDoctor for iSeries Update Rochester Support Center

*i want stress-free IT.  
i want control.  
i want an i.*

IBM System i



### iDoctor Job Watcher changes by release

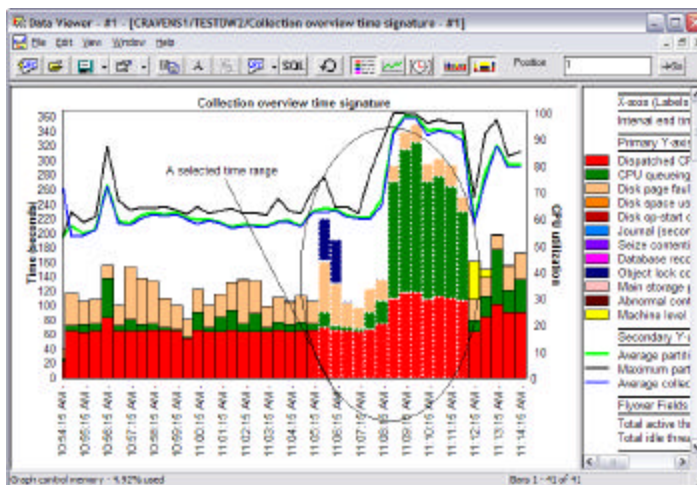
Change	V5R4	V5R3	
• Simplified drill down using bar selection	✓	✓	
• Zoom function for all time-based graphs	✓	✓	
• Job Watcher monitors	✓	✓	
• Summary function rewritten (faster, SQL based)	✓		
• Job grouping drill down options	✓		
• Alternate "toggle" views for many graphs	✓	✓	
• SQL editor now tied to every graph and table for easier customization	✓	✓	

## iDoctor Job Watcher changes by release (cont.)

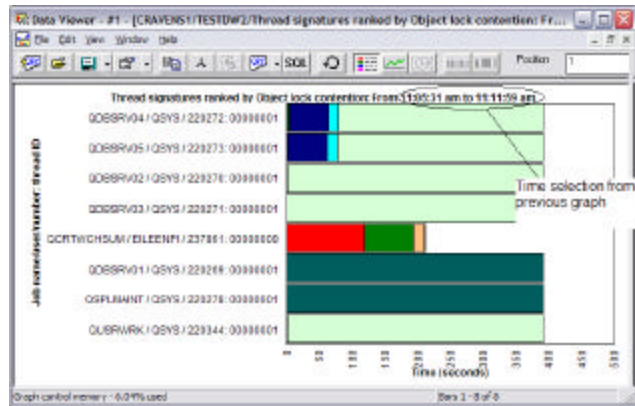
Change	V5R4	V5R3	
• Customizable graph patterns (hatchings)	✓	✓	
• Multithreaded GUI enhancements (Multiple queries can be executing simultaneously)	✓	✓	
• New graphs: JVM, current wait duration	✓	✓	
• Interval details (call stacks/SQL statements) displayed within a view instead of a popup dialog	✓	✓	
• Holder chase support	✓	✓	
• Variable width stacked bar support	✓	✓	
• Tip of day interface	✓	✓	

## Simplified drill down using bar selection

Time range selections are made by holding down shift and clicking on the 1<sup>st</sup> and last bar in the range.

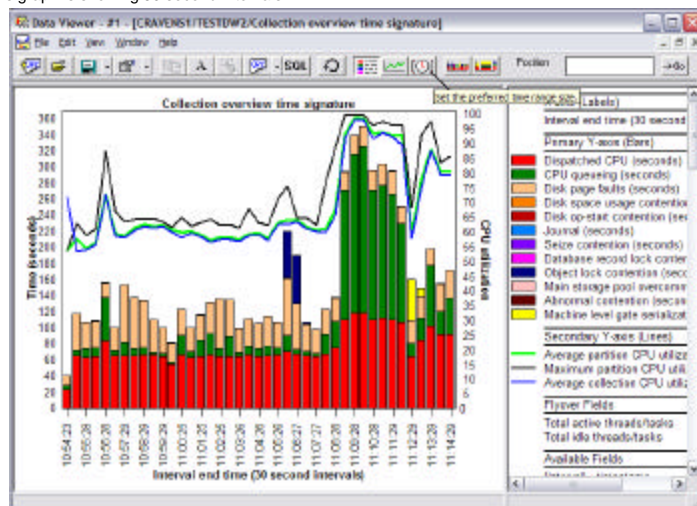


## Simplified drill down using bar selection (cont)



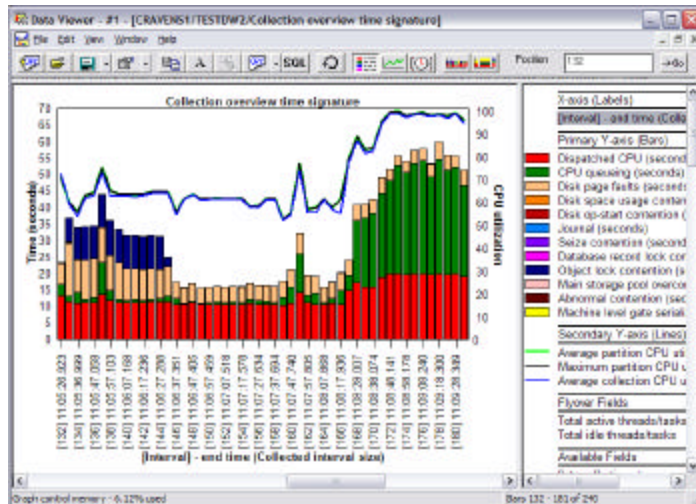
## Zoom function for all time-based graphs

All by time interval graphs have been configured to allow manipulation of the interval size. This graph is showing 30 second intervals.



## Zoom function for all time-based graphs (cont)

After changing the interval size to collected interval size, this graph is showing 5 second intervals to show more detail.



7

i want an i.

© 2007 IBM Corporation

## Summary function rewritten (faster, SQL based)

- At V5R4 the summary function has been rewritten to run under SQL stored procedures.
- SQL tables are created for the desired collection.
- A collection must be summarized to utilize the job grouping drill down options.
- Provides faster response time when working with Job Watcher summary graphs

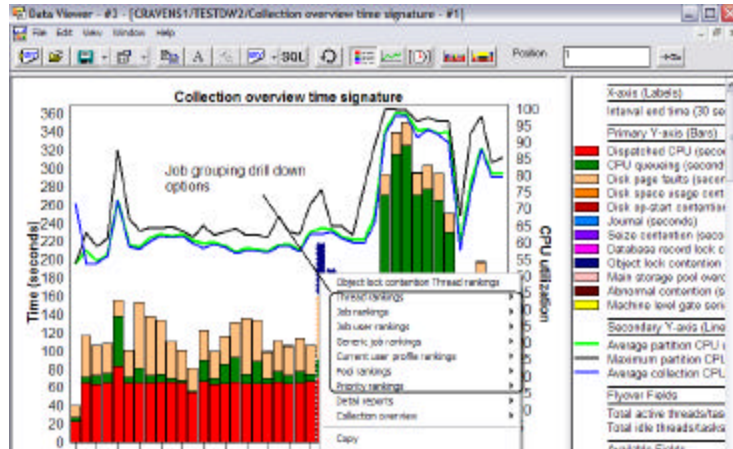
8

i want an i.

© 2007 IBM Corporation

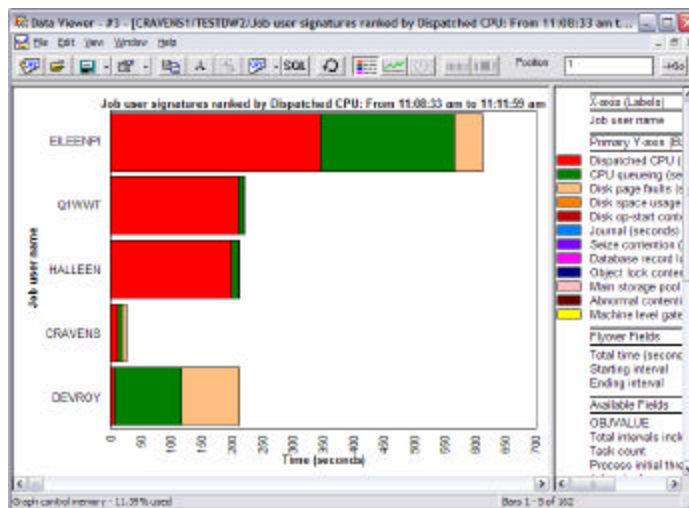
## Job grouping drill down options

The job grouping options allow a user to drill down from a collection overview graph in several ways not previously available:



## Job grouping drill down options (cont)

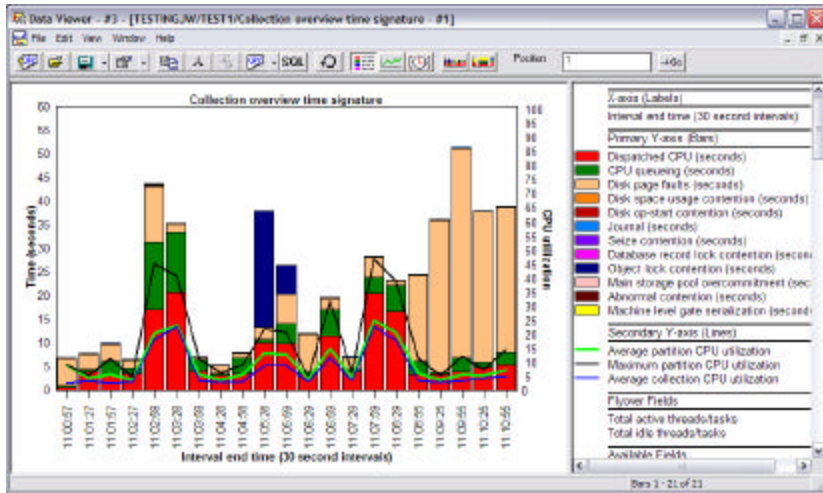
This graph shows wait bucket times grouped by job user name ranked by CPU.





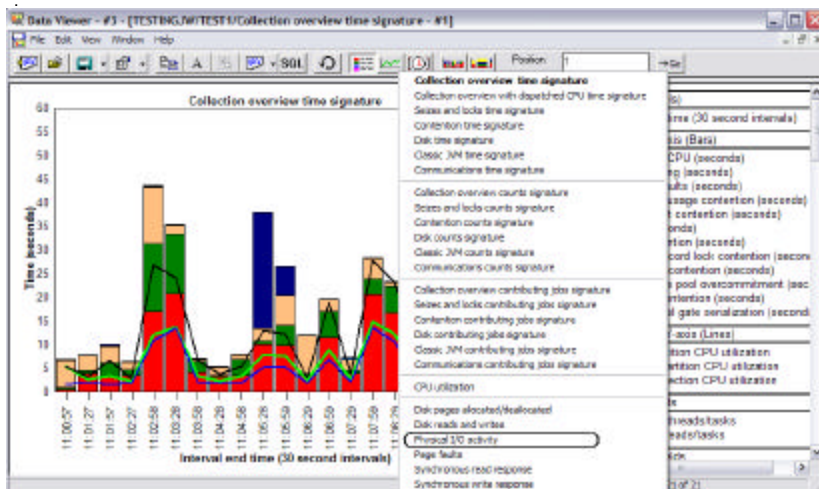
## Alternate “toggle” views for many graphs

Alternate views allow a user to see different graphs that are built from the same query that was used to build the current graph



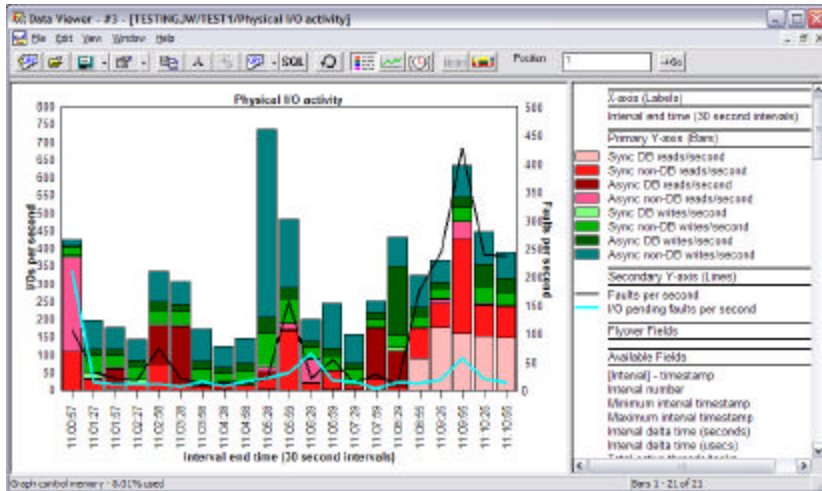
## Alternate “toggle” views for many graphs (cont)

Displaying the alternate views available for a graph using the toolbar



## Alternate “toggle” views for many graphs (cont)

This alternate view shows the same collection and time period as before, but displaying I/O activity rates instead of wait bucket times.



## SQL editor now tied to every graph and table

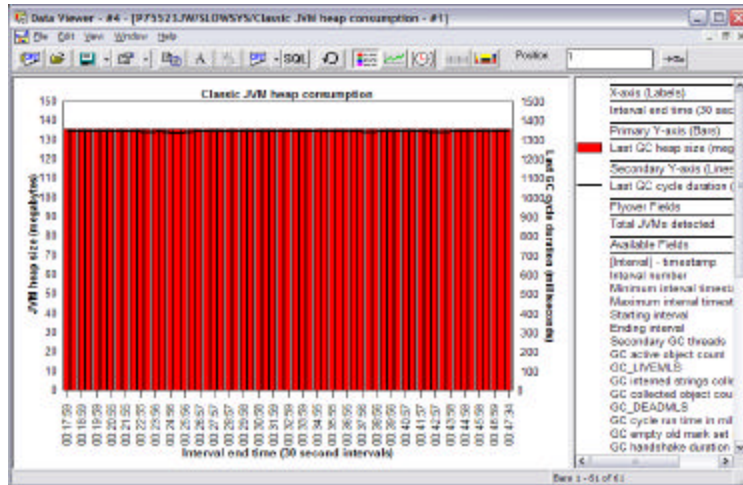
All graphs and tables now provide an optional SQL editor above it. Click the SQL button on the toolbar to show or hide the editor.

The screenshot shows a window titled "Data Viewer - #3 - [TESTING/JW/TEST1/Job watch - basic interval information - #1]". The main area displays a table with the following data:

Interval number	Ending snapshot start time of day	Ending snapshot end time of day	System TDE count	Selected TDE count	Active selected TDE count	Maximum system task count
31	2007-05-31-11 03:26:237000	2007-05-31-11 03:28:252000	3887	3887	231	3209897
32	2007-05-31-11 03:33:237000	2007-05-31-11 03:33:254000	3884	3884	231	3209891
33	2007-05-31-11 03:38:246000	2007-05-31-11 03:38:282000	3895	3895	234	3209892
34	2007-05-31-11 03:43:298000	2007-05-31-11 03:43:314000	3875	3875	233	3209892
35	2007-05-31-11 03:48:317000	2007-05-31-11 03:48:361000	3875	3875	433	3209895
36	2007-05-31-11 03:53:335000	2007-05-31-11 03:53:365000	3870	3870	213	3209896
37	2007-05-31-11 03:58:372000	2007-05-31-11 03:58:389000	3870	3870	238	3209897
38	2007-05-31-11 04:03:402000	2007-05-31-11 04:03:417000	3871	3871	228	3209898
39	2007-05-31-11 04:08:432000	2007-05-31-11 04:08:448000	3872	3872	185	3209900
40	2007-05-31-11 04:12:462000	2007-05-31-11 04:12:478000	3875	3875	289	3209904
41	2007-05-31-11 04:18:492000	2007-05-31-11 04:18:509000	3883	3883	229	3209917

## JVM graphs

There are several graphs showing heap consumption, objects (active/collected), and references for all JVMs, or a selected JVM.



## Additional information

iDoctor Website

[http://www-912.ibm.com/l\\_dir/idoctor.nsf](http://www-912.ibm.com/l_dir/idoctor.nsf)

PEX Stats Redbook

<http://www.redbooks.ibm.com/redbooks/pdfs/sg247457.pdf>

Support email: [idoctor@us.ibm.com](mailto:idoctor@us.ibm.com)