



Riyad Bank SOA

flexible architecture & integration

Rashed AlOthman, Senior Vice President
Abdulrahman AlOdan, SVP Solution Support
IT Governance, Riyad Bank
Kingdom of Saudi Arabia
rashed.alothman@riyadbank.com

To be achieved

- What is Architecture?
- Why do we need a developed IT architecture?
- How do you build the architecture?
- How to successfully implement architecture?
- ASI built-in flexibility.
- How RB enabled its core CICS system.
- Fees Cube.



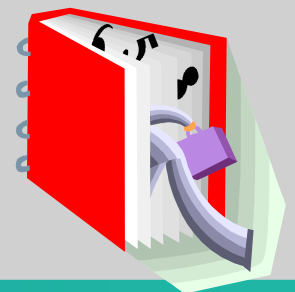
What is Architecture?

- Is a process bridging Business & IT.
- Provide a roadmap for enterprise innovation.
- Provide the blueprints for the desired enterprise:
 - Business Architecture
 - Technology Architecture

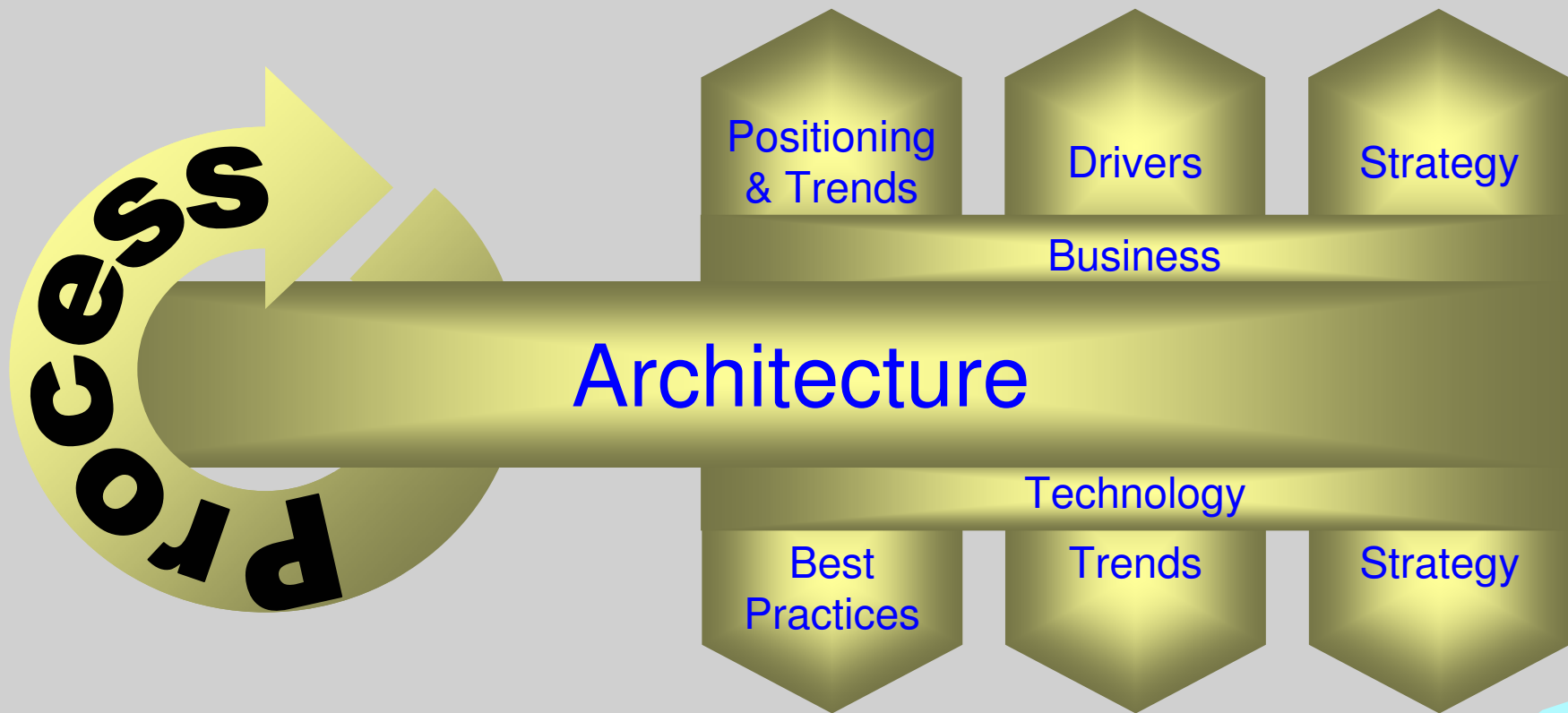


Why do we need a developed IT architecture?

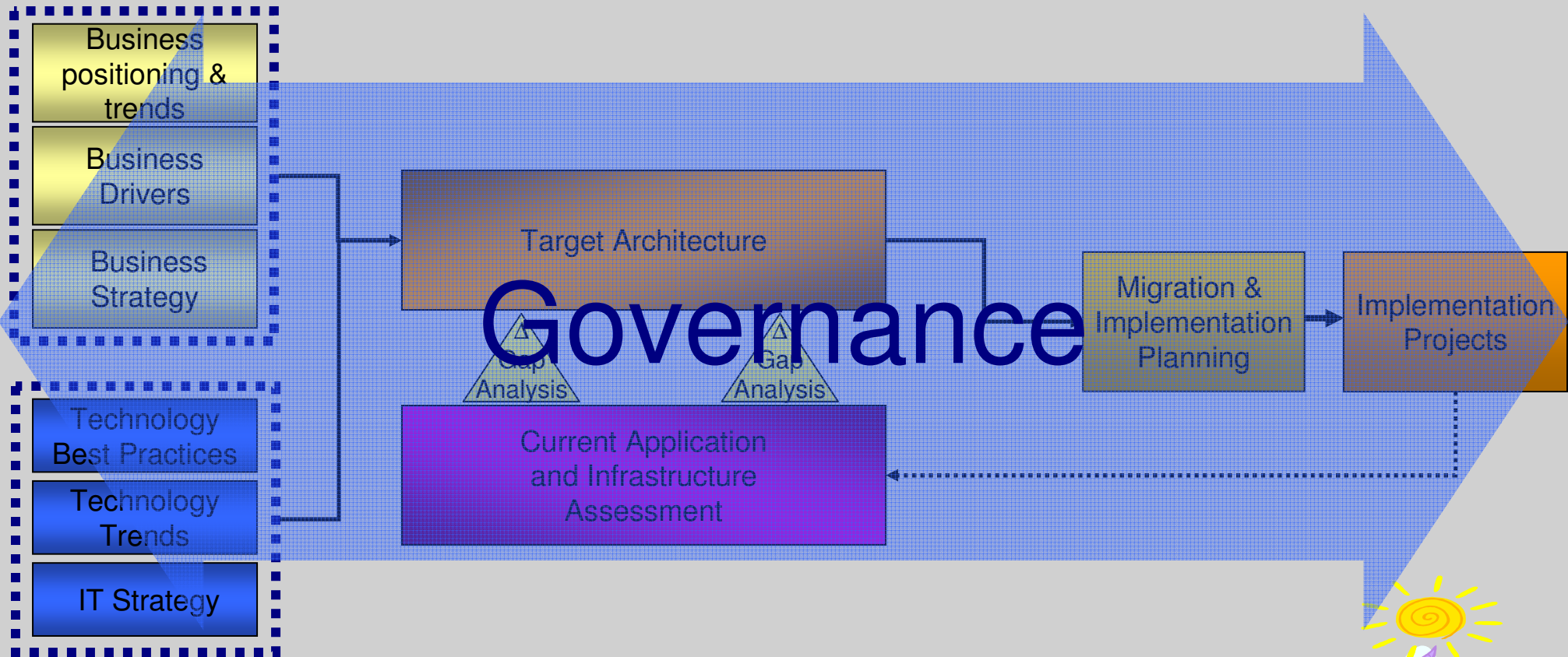
- To reduce IT Complexity.
- Create an IT adaptive environment.
- Improve overall leverage of valuable IT resources
- Assuring stable operations & infrastructure availability.
- To help the information system become a true tool of business navigation with a better risk management & control.
- To enable IT cost effectiveness and to improve the utilization of capital (Return On Asset)



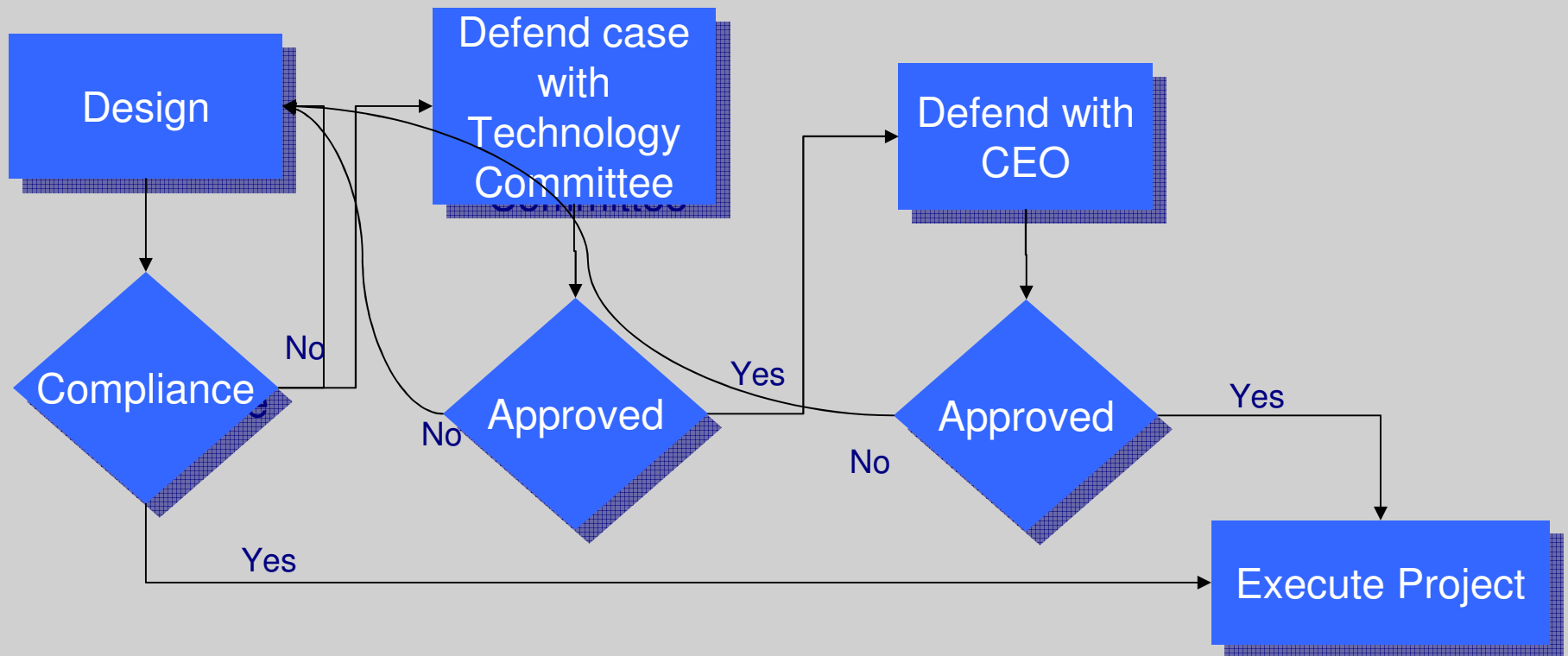
How do you build the architecture?



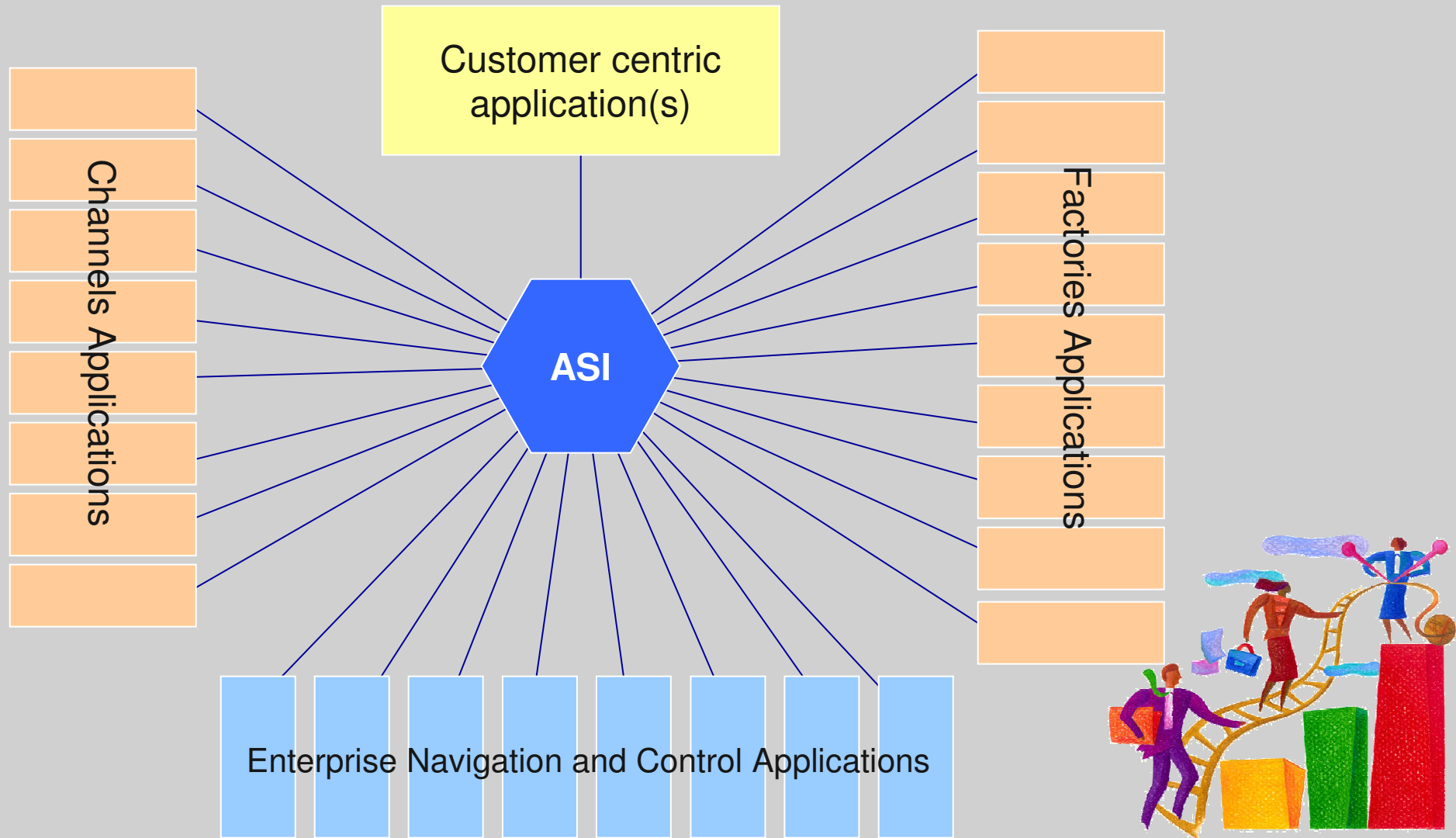
Steps to build Architecture



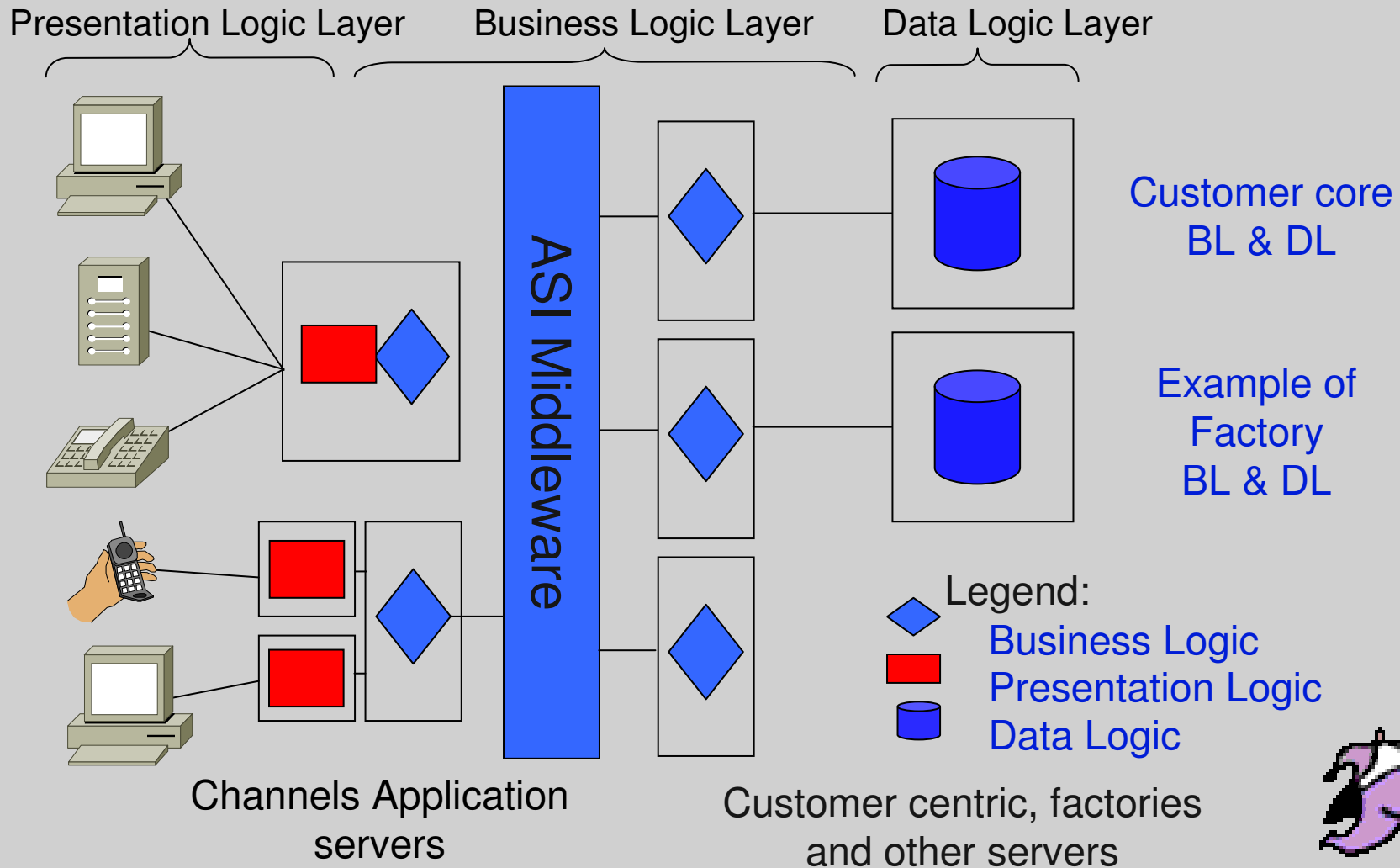
Certification Process



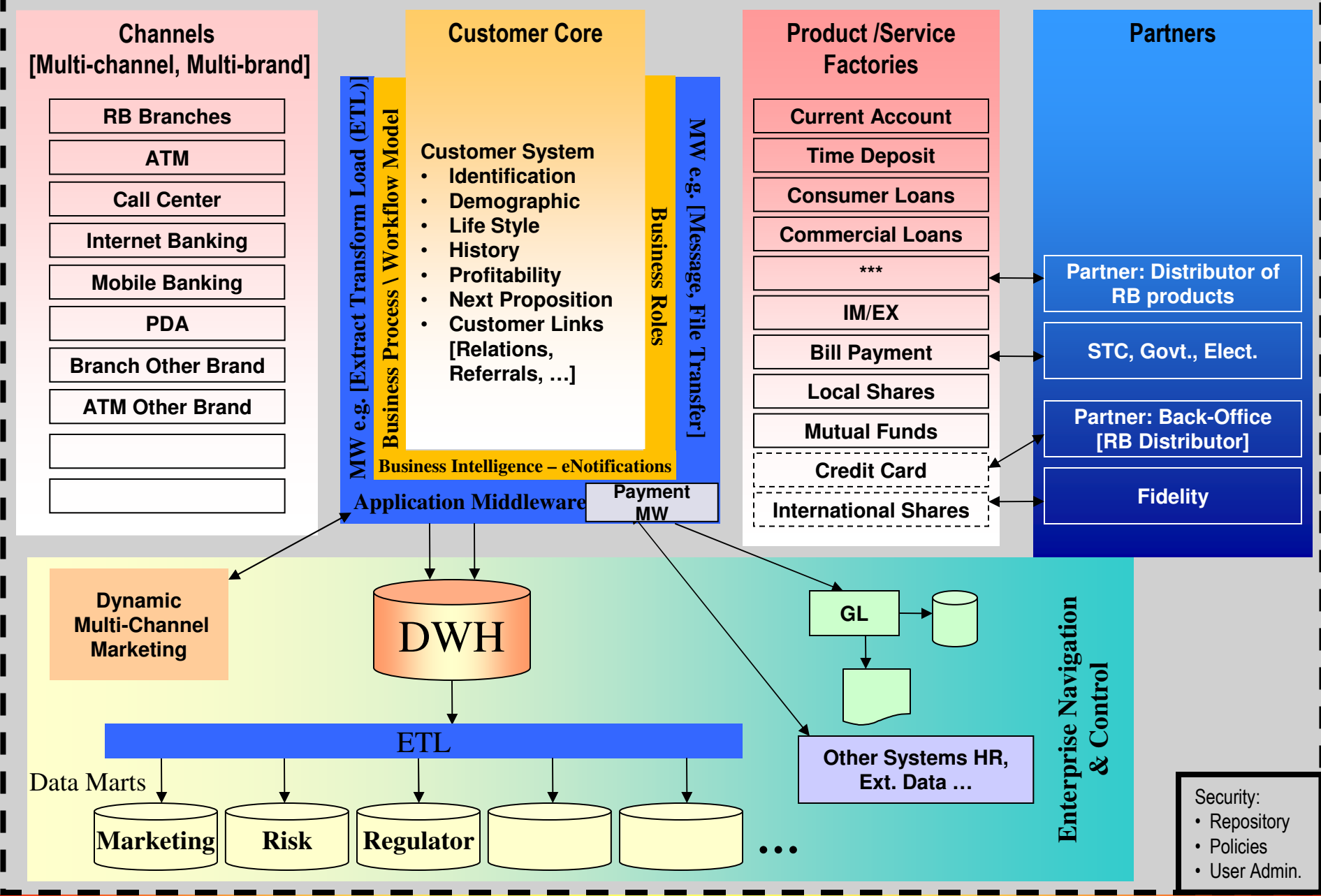
ASI and built-in flexibility



ASI and built-in flexibility



Application Domain Architecture



End to End Security

How RB enabled its core CICS system

■ Legacy Core System

- Host: IBM Mainframe [COBOL, Assembler, VSAM, CICS]

■ Supported Protocols

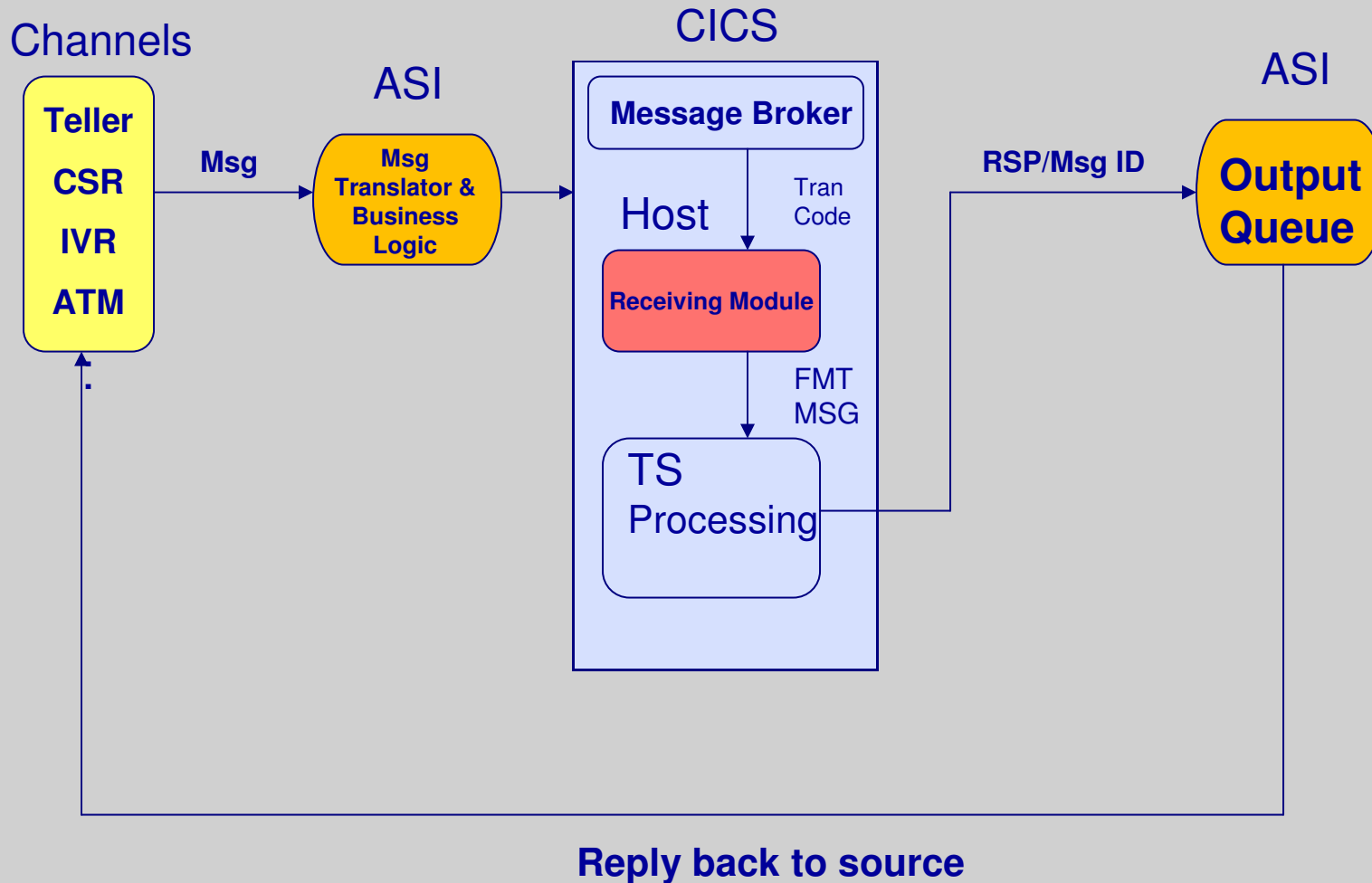
- LU 6.2 (3270 Screens)
- LU 6.0 (SNA)

■ Drawbacks

- Limited Users causing deadlocks
- Duplications
- Slow Performance

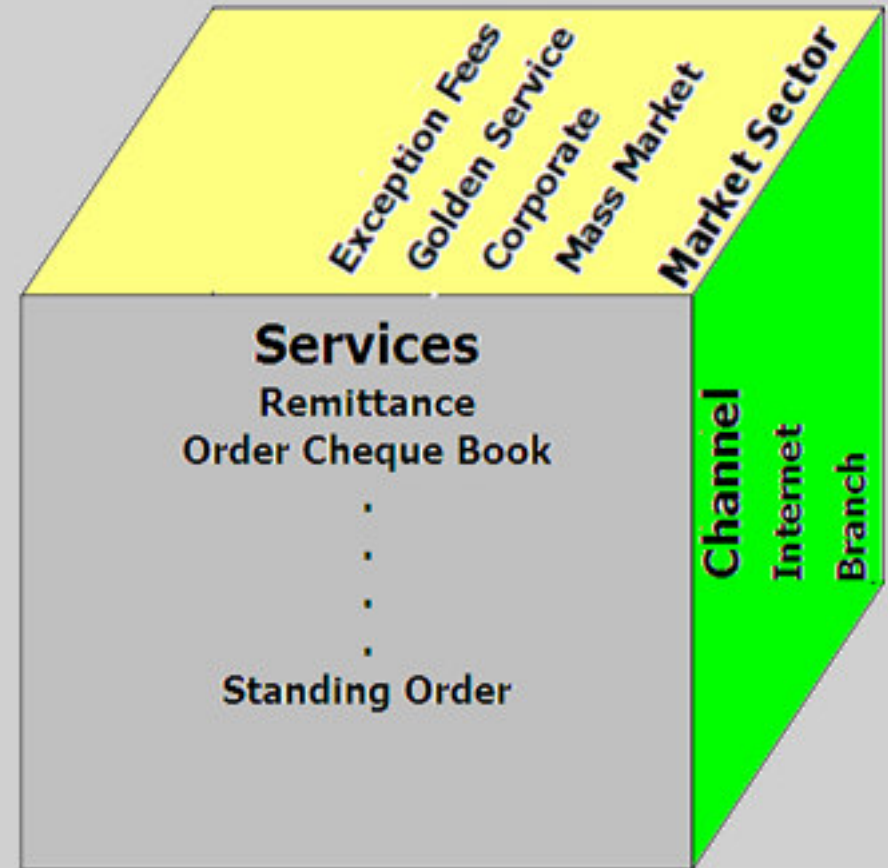


Enable RB Core System ASI Interface



Fees Cube

- Multi Dimensional.
- Centralized Fee Structure
- Discount Based.
- Exception Fees for Specific Customers.
- Define Once, Use Cross Channel.



Thank you ...