



IBM SOA

Business Process Management Enabled by SOA

Julius PETER
SOA Sales Executive, CEMAAS SWG
julius_peter@at.ibm.com



11/21/2007

© 2006 IBM Corporation

CEO's Cite Innovation as Top Priority for Business

Business Model Innovation delivers the greatest returns

Results of 765 CEO interviews worldwide:

Out Performers place 2X emphasis on **Business Model innovation** than under performers

- CEOs are under intense pressure to innovate
- Corporate culture is critical to sustained innovation
- Business model innovation is the new strategic differentiator



Which key business priorities will your IT organization implement or support in 2007?



Note: Multiple responses allowed.
 Data: InformationWeek Research Outlook 2007 study of 300 business technology professionals

Inflexible and Outdated Processes

Are the Root Cause of Many Corporate Disasters

Major Airline strands passengers on runway for 10 hours
– no food, overflowing toilets



Market-leading cell-phone provider exits market after small fire

Why? Inability to modify processes on the fly.

BPM Projects are *Disguised* in Various Ways

Financial Management
(SOX Compliance)



Product Lifecycle Management
(Category Line Extension)



Marketing, sales, and services
(Contact Center Optimization)



Supply Chain
(Inventory Management)

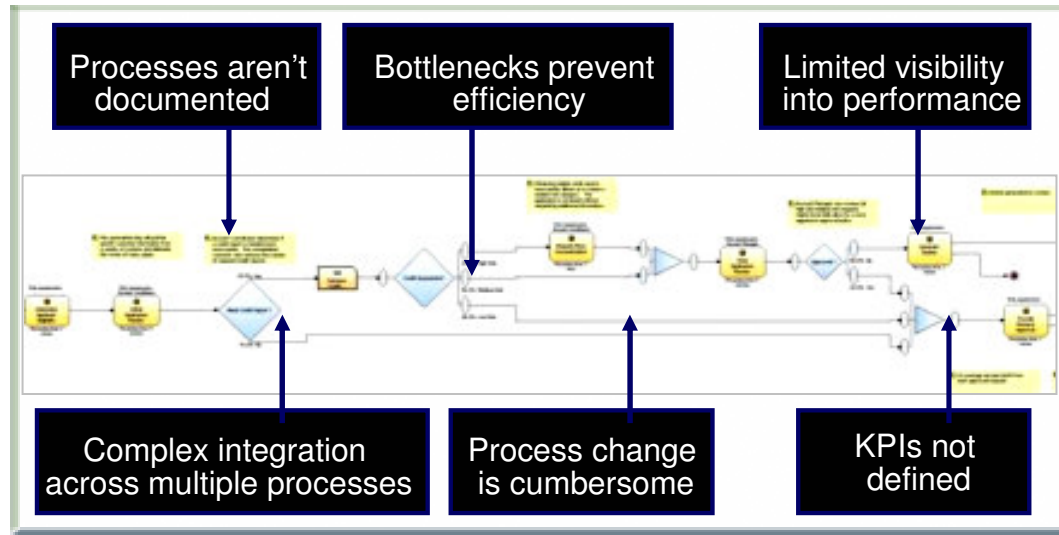


Human Capital Management
(Employee Self-Service)



Business Process Management is a Discipline...

BPM Solves:



Integration Modeling Monitoring

Software that Enables BPM

Forms Rules Engine Workflow

Models Process Knowledge Metrics

Expertise that Delivers BPM

Policies Business Logic Methodology

BPM governs organizational and operational activities

BPM and SOA – Better Together

Gartner

Publication Date: 9 February 2007

Research

ID Number: G00145586

SOA and BPM Are Better Together

“...SOA and BPM initiatives...are more successful and the benefits are compounded when they are united”

“Organizations that align their BPM and SOA initiatives in 2007 will double their likelihood of becoming an industry leader by 2011”

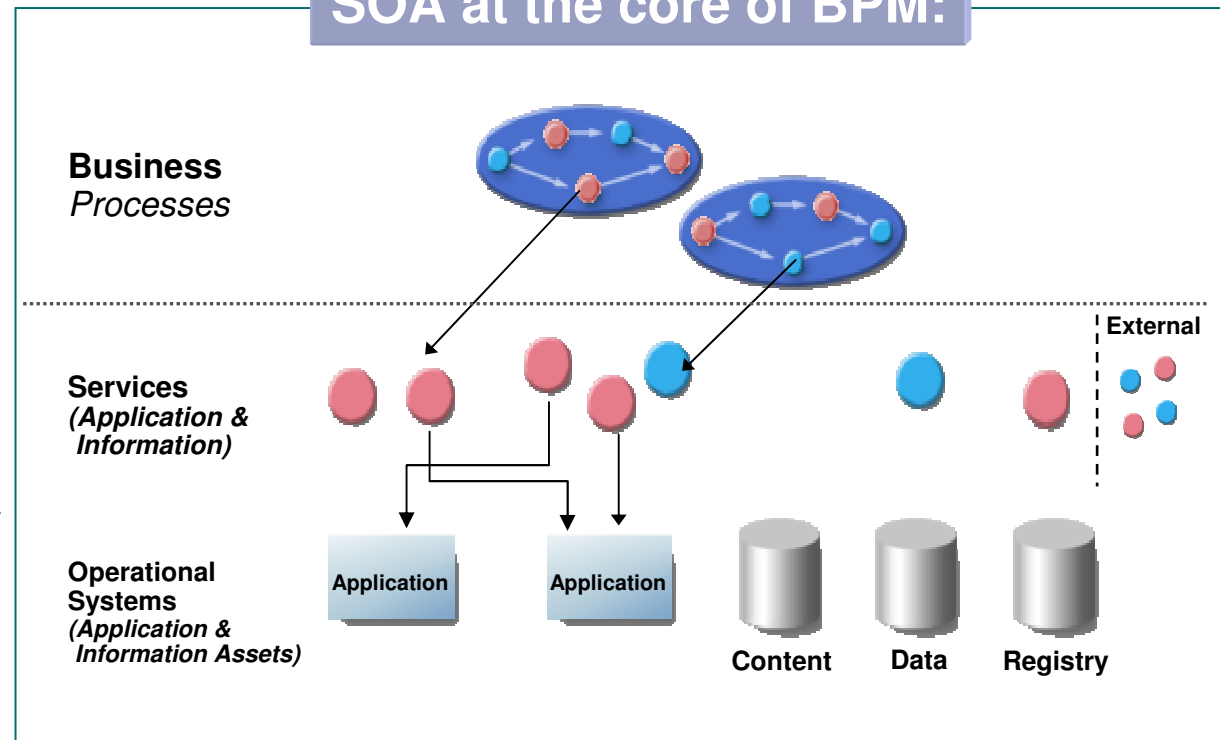
Source: BPM and SOA, Better Together, Paolo Malinverno, Janelle B. Hill, Gartner, Feb 2007.

....and here's why

SOA improves how you design, manage, and optimize your business processes by enabling:

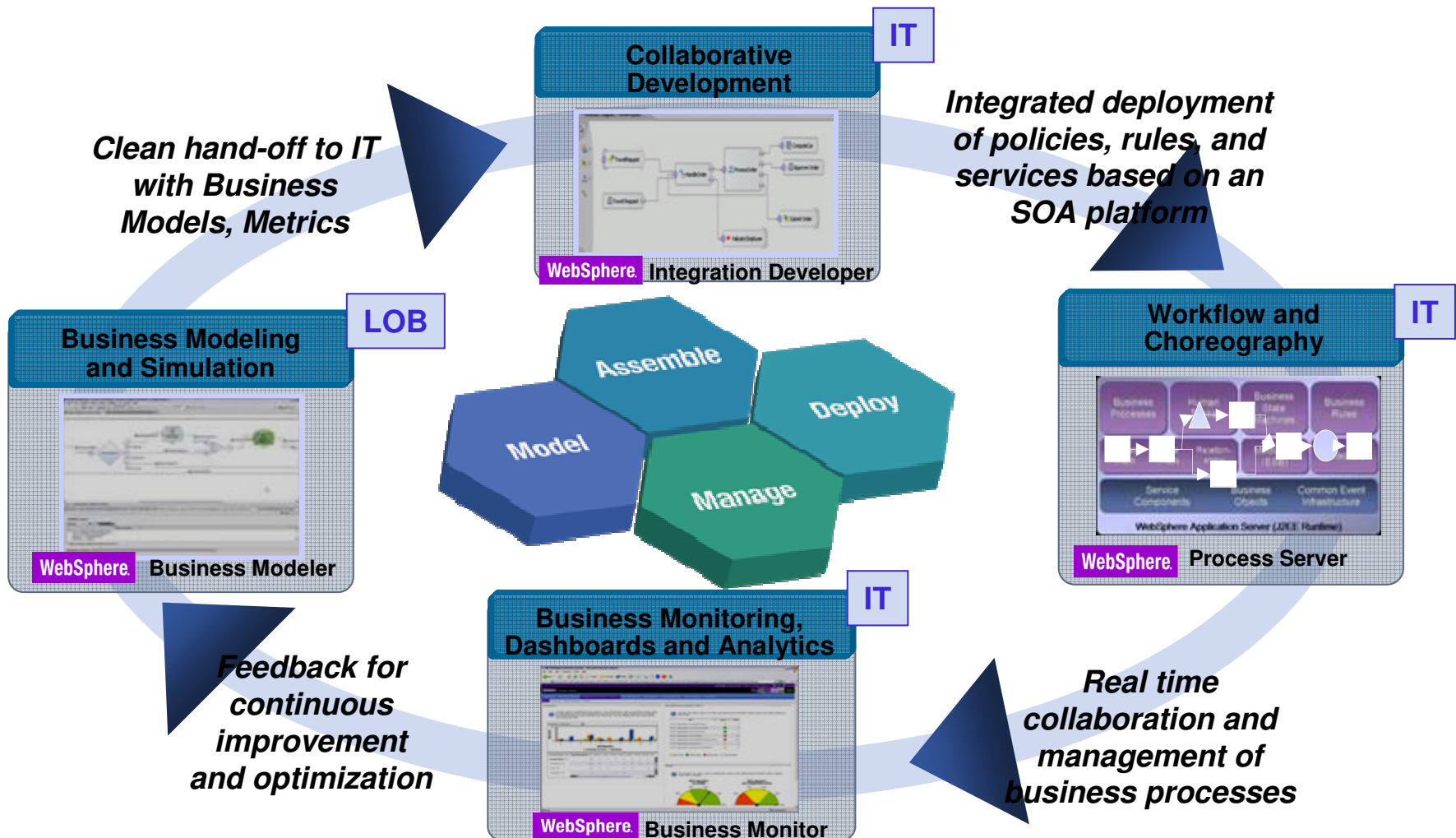
- Solution Building Efficiency
- Reuse of existing assets
- Flexibility in change

SOA at the core of BPM:



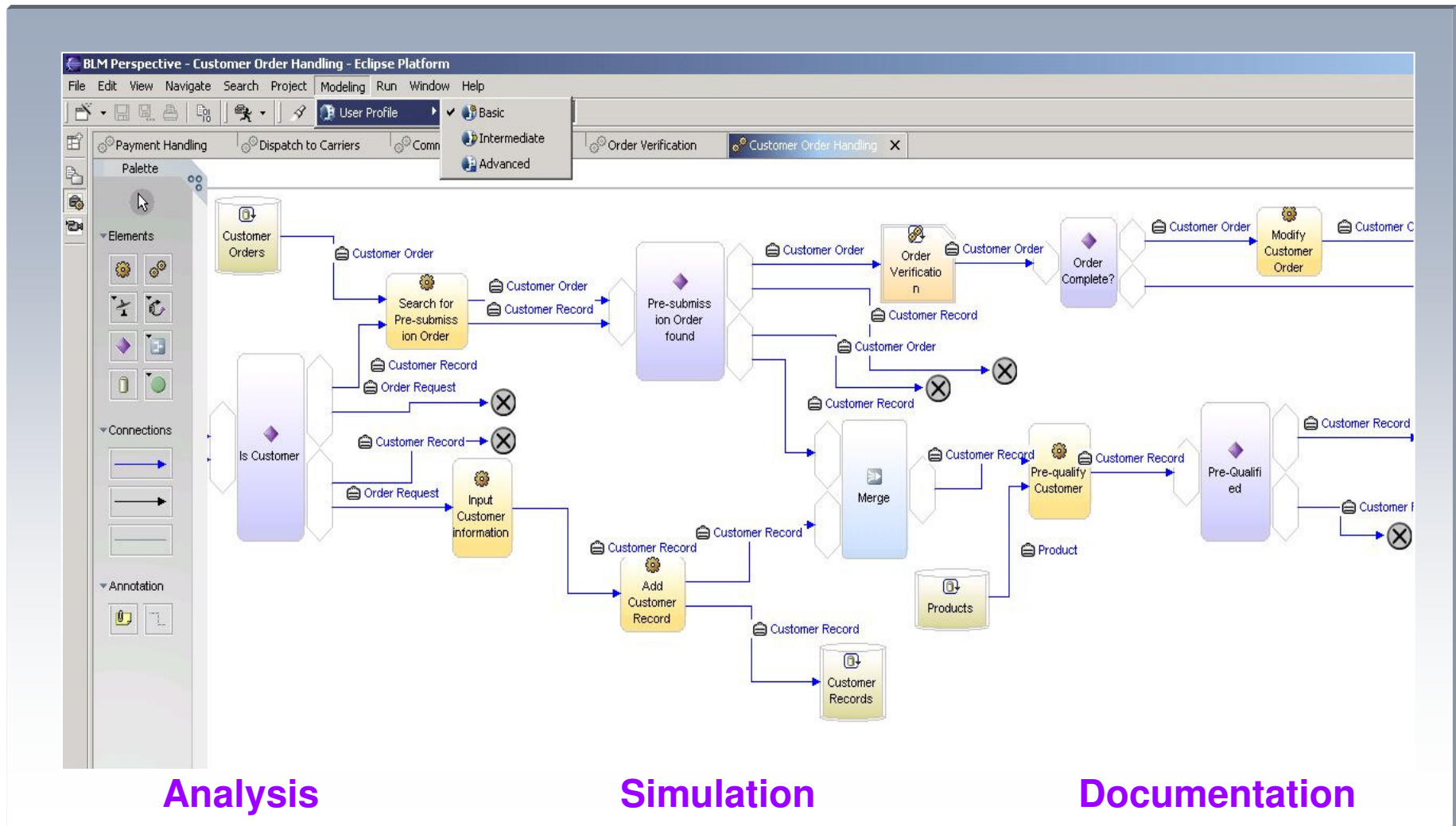
Flexible BPM enabled by SOA

Full support for the BPM life cycle



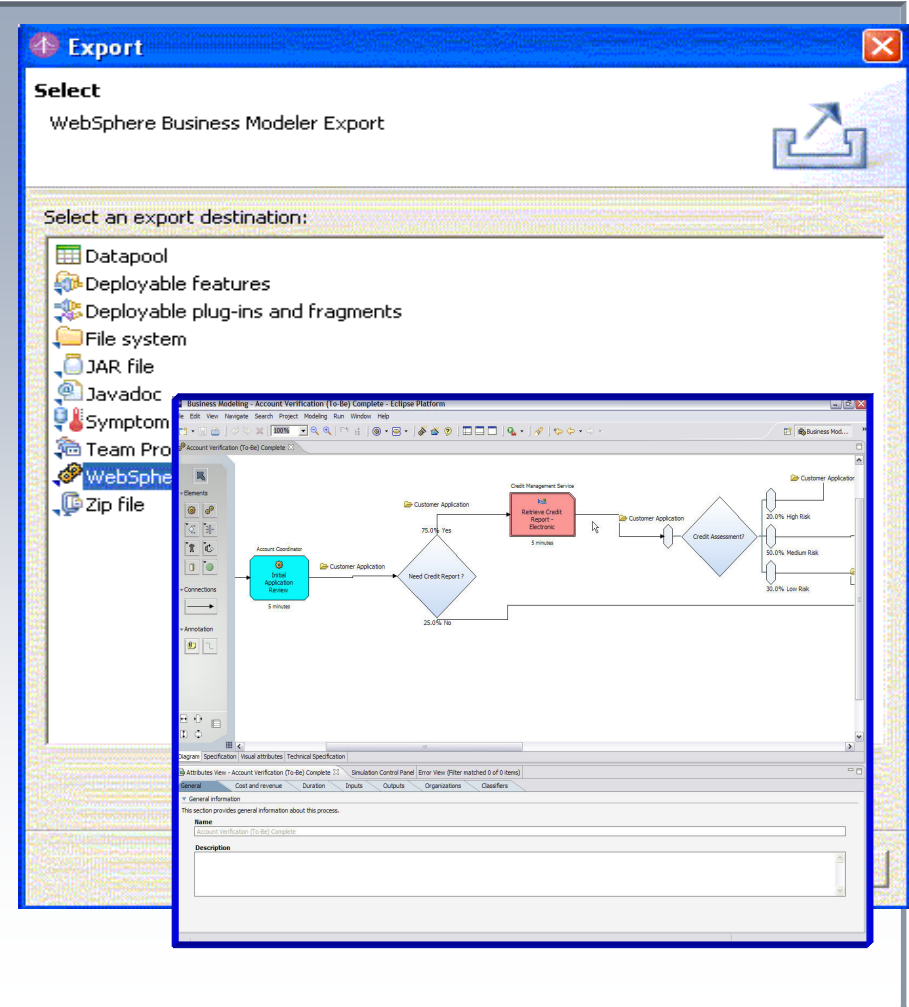
Process Design & Modeling: WebSphere Business Modeler

A Tool for Business People.....

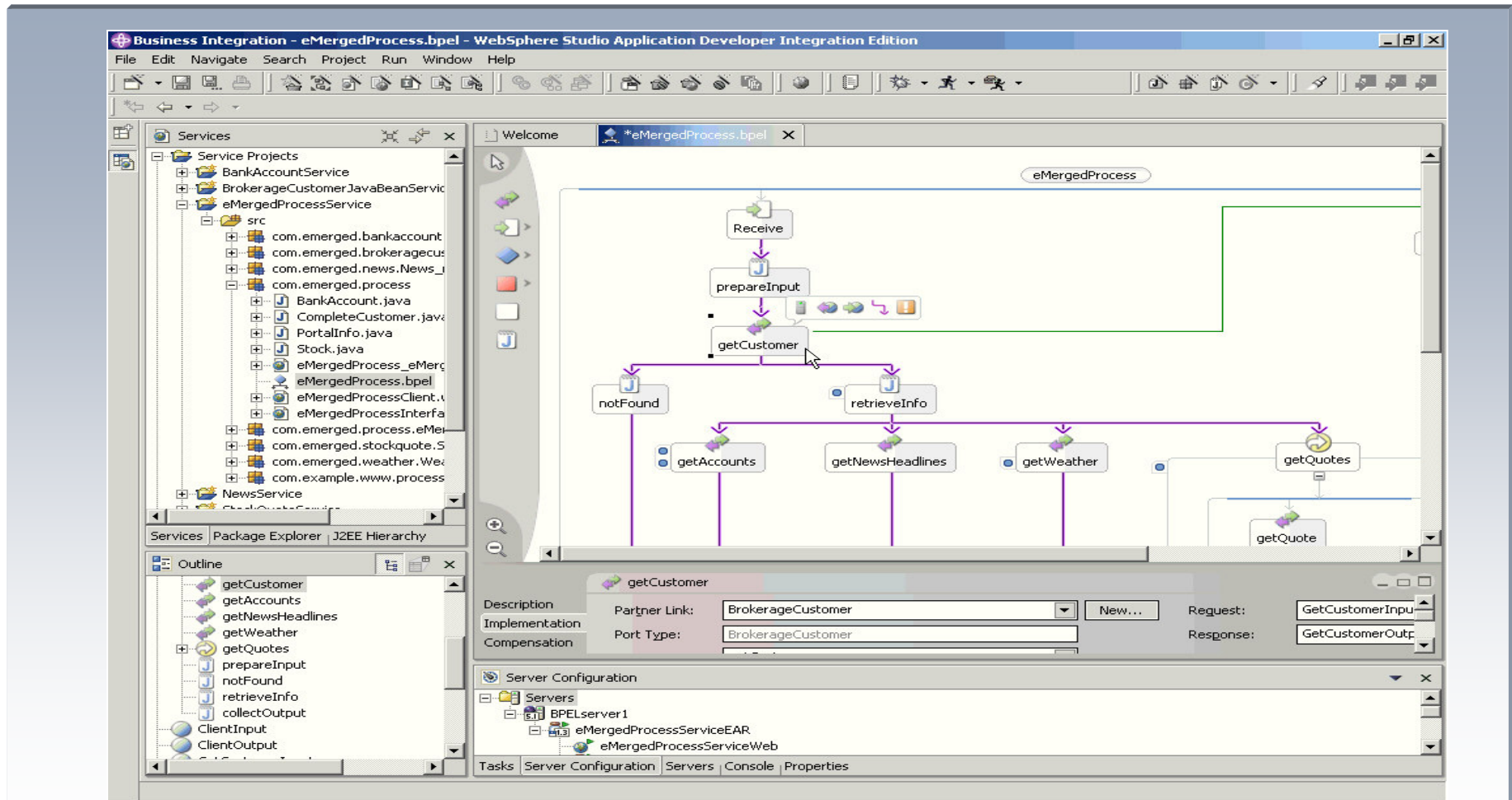


Hand-Off To IT – Precise Business Requirements

- Direct export of models to IT
 - BPEL for execution
 - XSD for data definitions
 - WSDL for services interfacing
 - UML for Rational Software Architect
- Precise business requirements
 - For Assemble
 - For Deploy
 - For Manage



Process Choreography: WebSphere Integration Developer

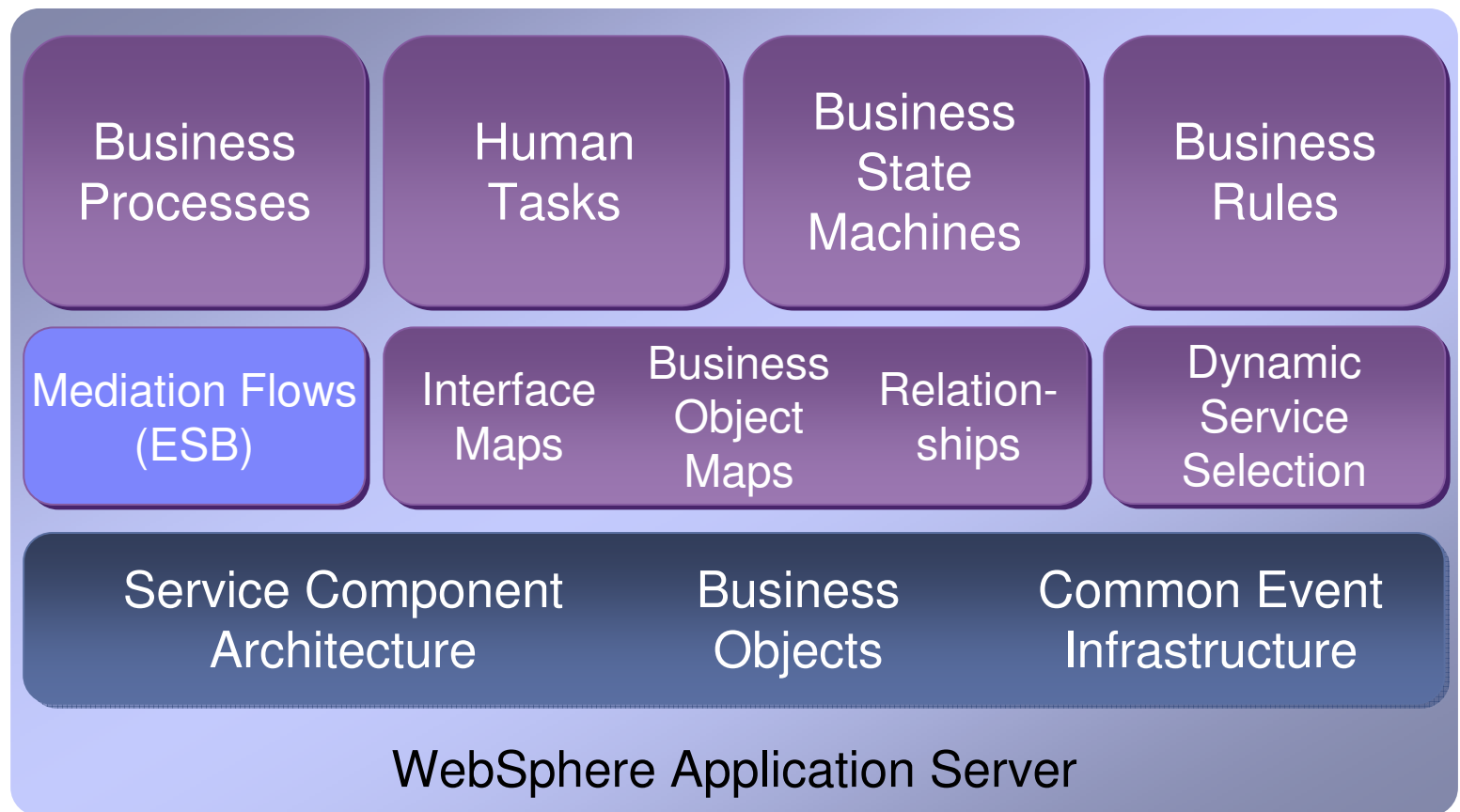


Technical Enrichment

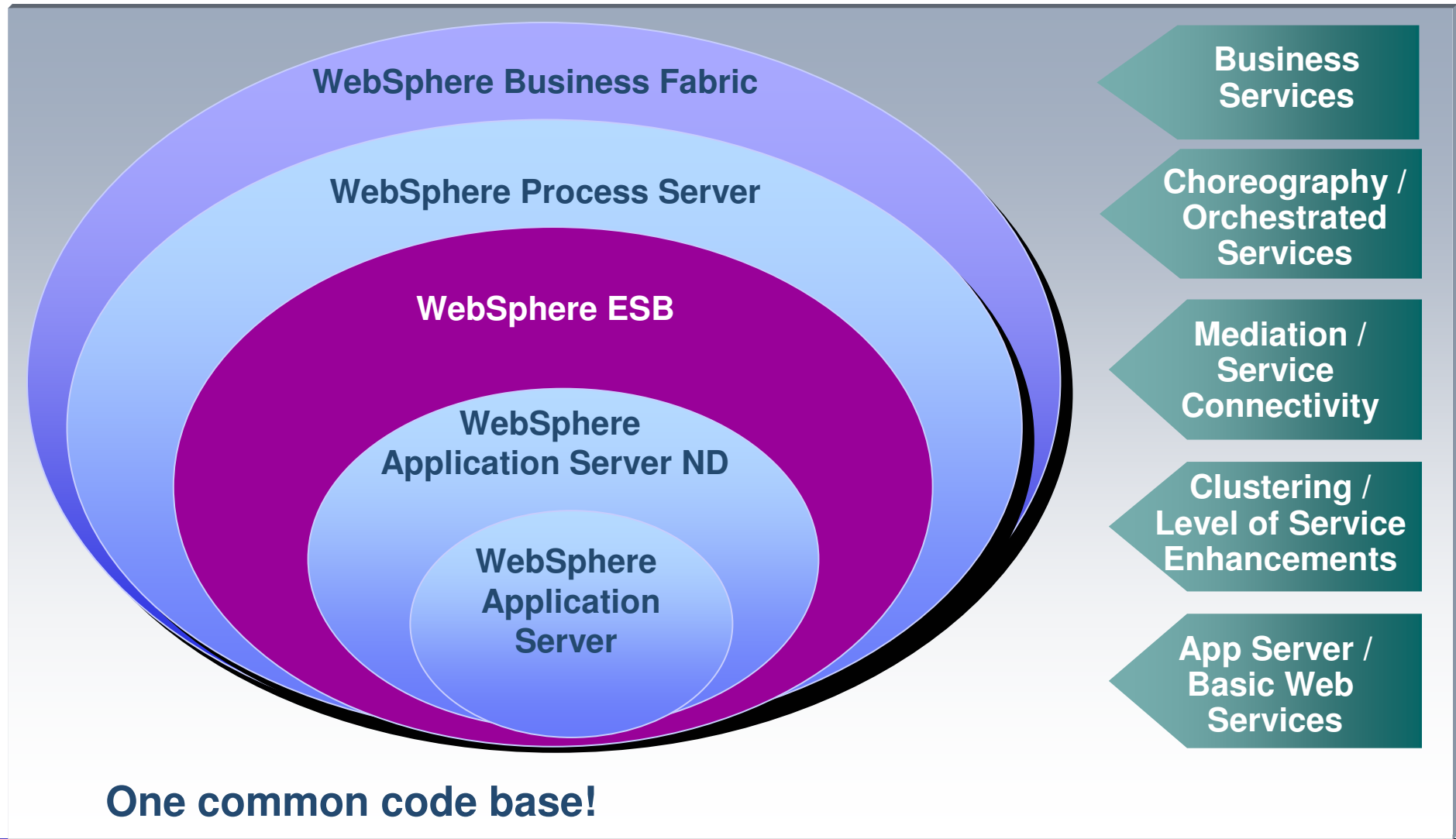
Service Integration

Test

WebSphere Process Server - Components

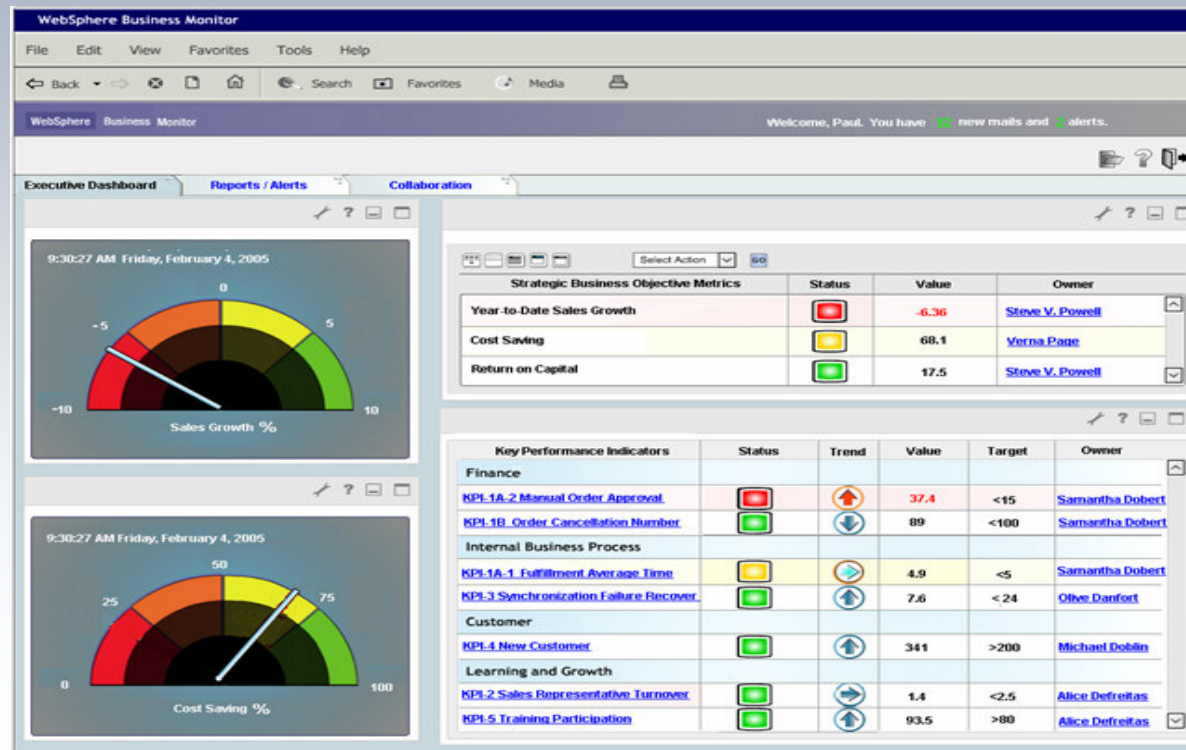


The WebSphere Stack: From Application Server to a full Business Services Environment



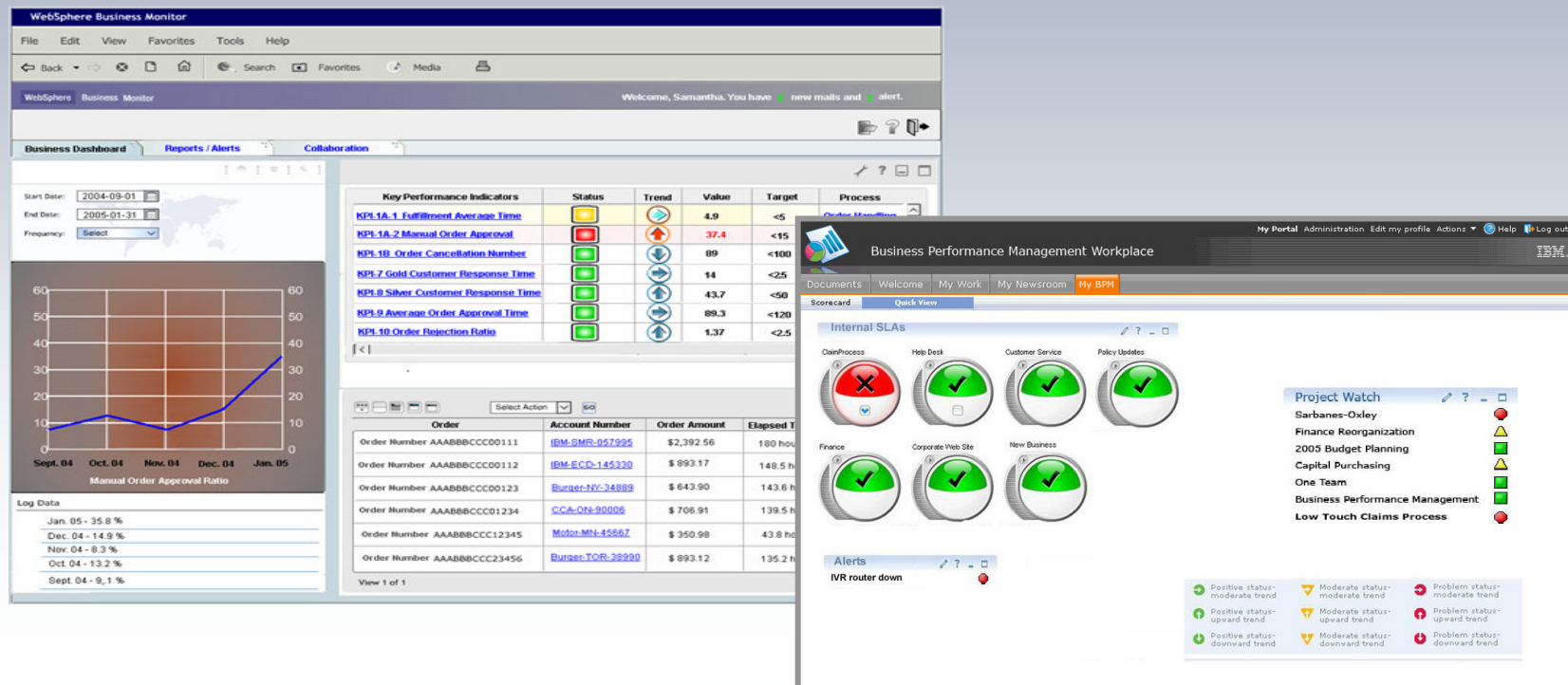
Bus. Process Control & Monitoring: WebSphere Business Monitor

- Controlling of (automated) Business Processes
- Execute tactical decision, e.g. shift or suspend work items, reassign resources
- Alerts and Escalations

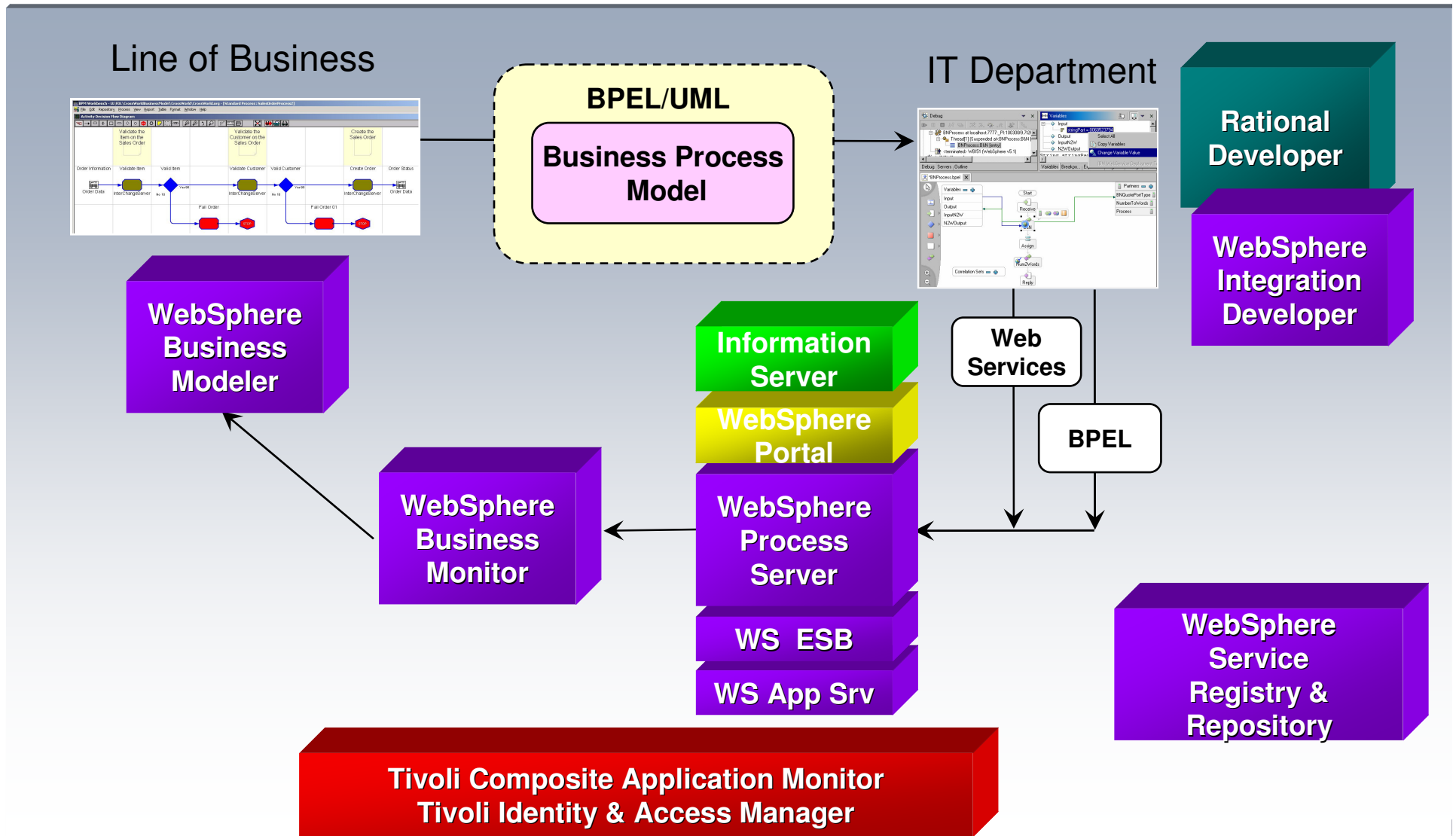


Business Dashboards: WebSphere Business Monitor

- Strategic (“1,000 foot view”) or “Executive Dashboard” of your Processes
- Trends from a real-time and historical perspective
- Measurement Points & Units defined by WebSphere Business Modeler
- Feedback of actual Process Performance into Modeler

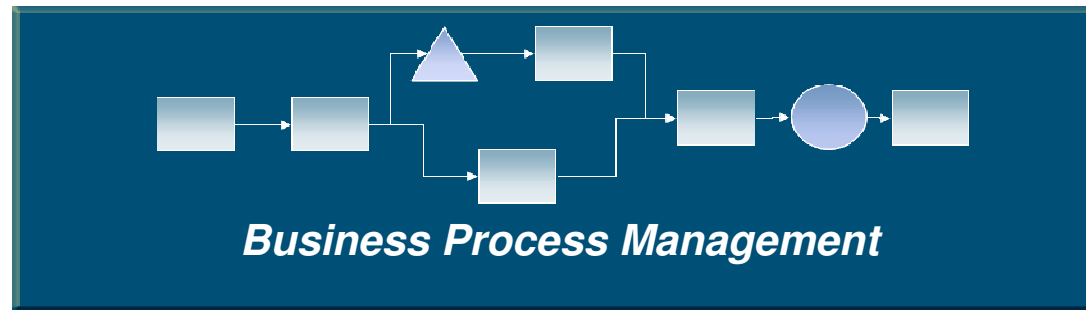


Closing the Loop..... and the Gap between IT & LOB



Five Flexible Starting Points for BPM

Customers can start BPM in different ways



Modeling & Simulation

Design and simulate business processes



Business Activity Monitoring

Track performance, gain insight, and take action



Process Automation

Choreograph processes across applications and systems



Rules and Pre-built Frameworks

Manage process rules and accelerate design and implementation time

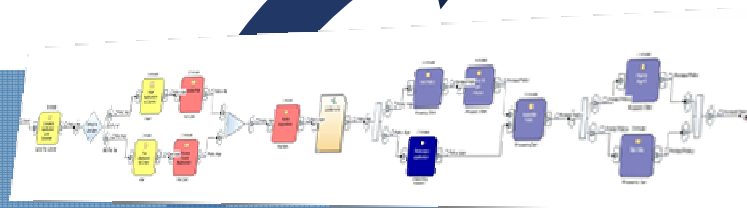


Content Centric Processing

Manage processes where content is used as input for a decision or produced as the output

Business Level Modeling and Simulation

Modeling & Simulation



- Use **ROI** reports to compare and analyze Results

- Model “what if” scenarios
- Use simulation capabilities to:
 - Assess risk mitigation
 - Make investment decisions
 - Calculate value of improvements

- Import Visio Models

WebSphere Business Modeler

Iterative and continuous improvement

Unigroup Inc.

UniGroup, Inc.



Business Challenge:

Leverage emerging wireless communications technology to maximize the effectiveness of their Transportation Processes, leading to continuous cost and time optimization of their shipping resources.

- ▶ **Solution:** Use business process modeling to document and analyze their critical business processes, yielding more effective communications, cost savings, and improved tracking of both their equipment and customer assets.
- ▶ **Results:** 70% reduction in communications cost for van operators. Realtime visibility into shipping resources and location information, and increased customer satisfaction given the ability of letting them know the exact status of their shipments in route.
- ▶ **Implementation Details:** WebSphere Business Modeler

Business Activity Monitoring



Business Activity Monitoring

Scorecards

Key Performance Indicators for business units

Collaboration

Work with teams to resolve situations

Business Alerts

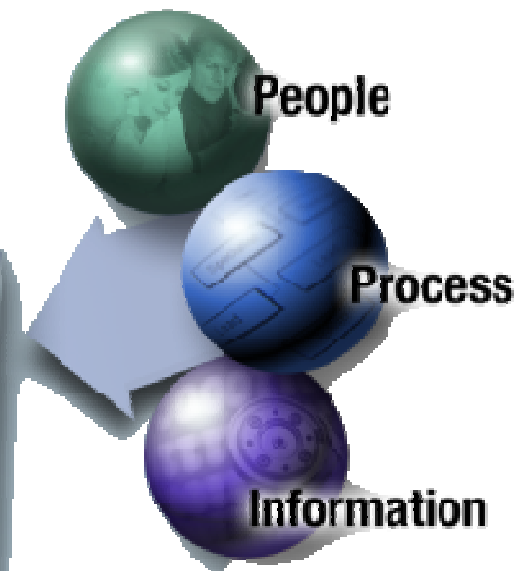
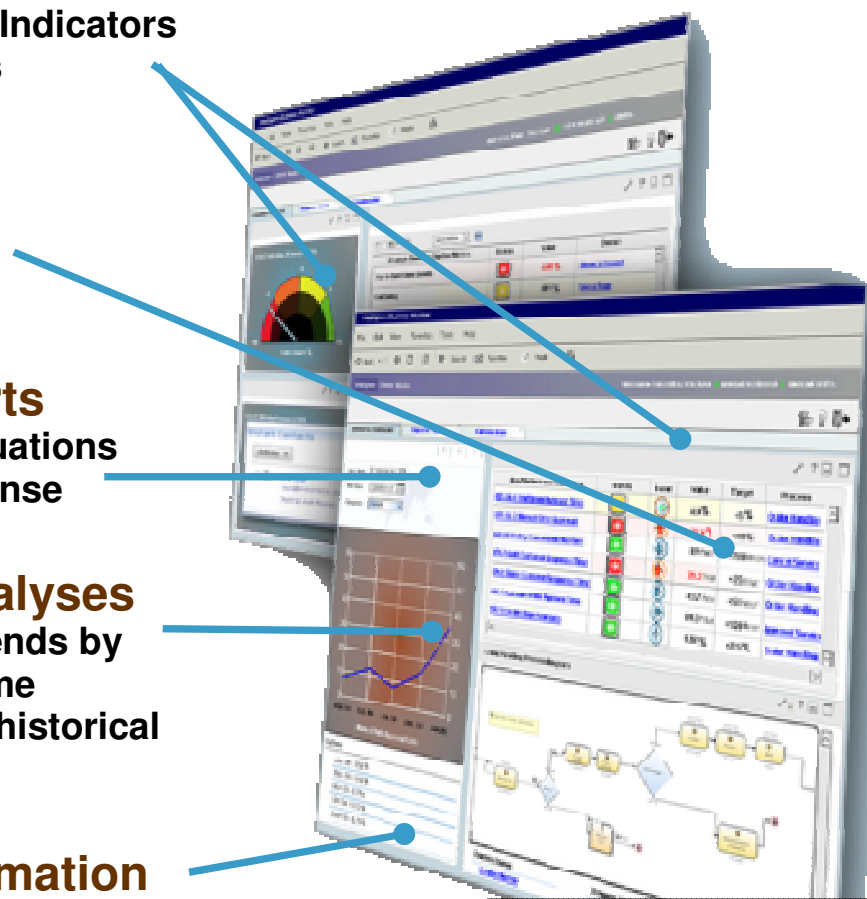
Notification of situations that require response

Reports & Analyses

Understanding trends by combining real-time performance and historical information

External Information

Information affecting performance



WebSphere Business Monitor

Identify activities and areas for improvement

BPM Disguised as:

Product Lifecycle Management
(Plant Operations)

Supply Chain
(Inventory Management)

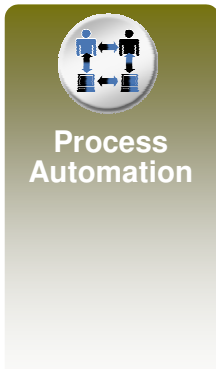
- Driving force behind BPM Adoption
 - Synchronize SAP ERP system with various production plant software systems
 - Manual processes requiring data gathering, was time consuming and error prone



Modeled processes for visibility
Aligned business and technology priorities
Used adaptors to integrate custom apps with SAP
Deployed improved processes on an SOA

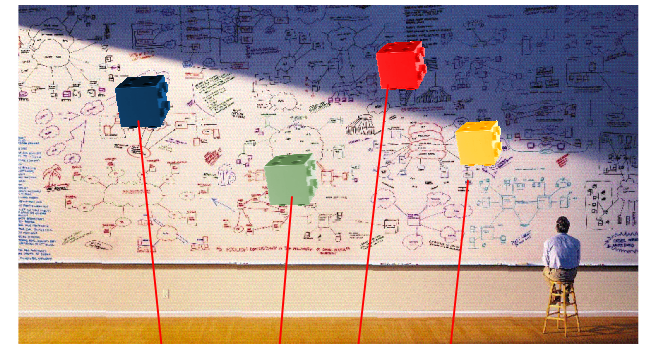
Rapid Solution Deployment - 4 Months from Concept to Implementation
Reduced potential human error with process-controlled automation

Process Choreography and Automation

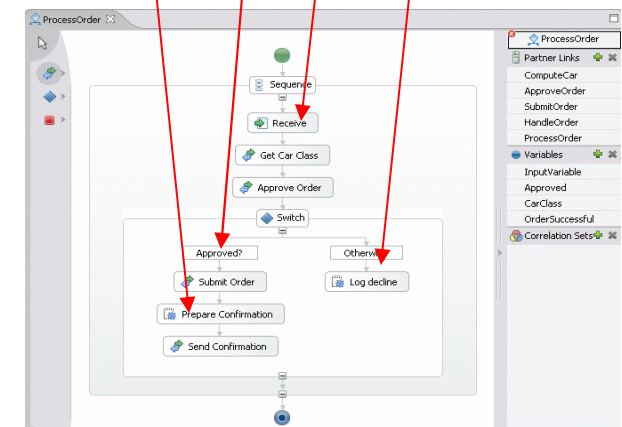


- Runtime for end-to-end **SOA-based** process automation
 - *Flexible, reliable, scalable, secure*
- Integrated **ESB** for Range and Reach
 - *Seamless access to all available services*
- Robust **Human and System-centric** BPM Capabilities:
 - *Human to Human; Human to System; System to System*

Transform your business from this...



...to this

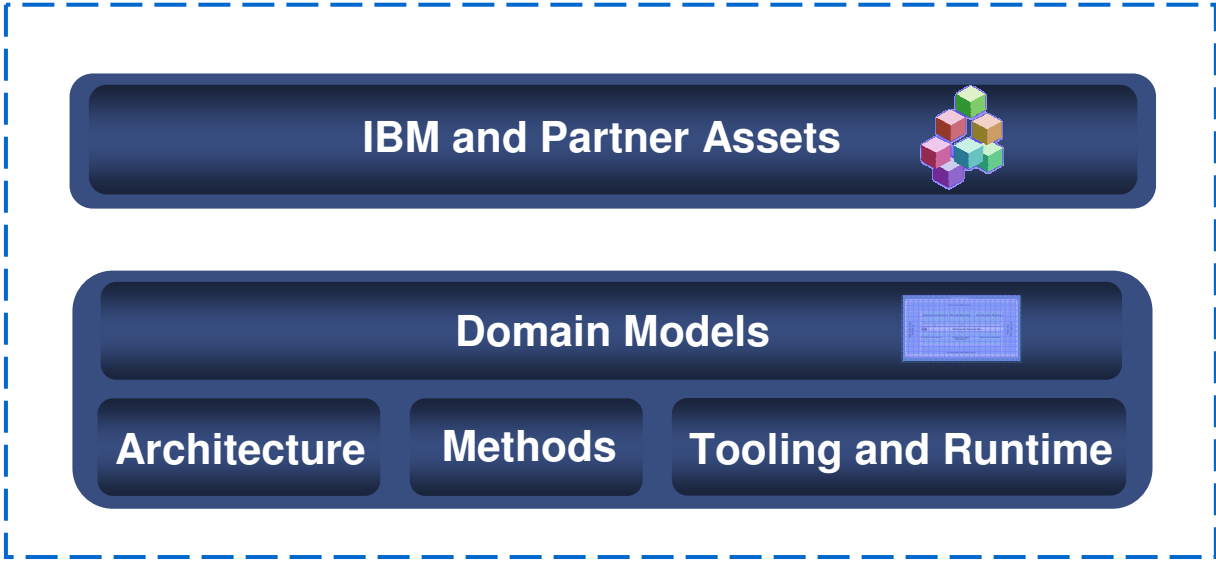


BPM for the Mainframe

IBM Industry Frameworks accelerate your ability to leverage SOA

Rules and Pre-built Frameworks

The Blueprint
IBM Industry Studies



SOA Industry Roadmap



Rules and Pre-built Frameworks

Industry Frameworks

- Service-Oriented Business Solutions Frameworks
- Based on Industry Standards
- Combination of IBM and Business Partner Assets



Industry Content Packs

- Business Service Templates to accelerate deployments
- Expanded industry coverage for Banking and Telecommunications

WebSphere Business Services Fabric

- National Language Support
- Alignment with IBM SOA Foundation
- Additional Standard Operation Environments



▶ Business Challenges:

- Make it easy for Independent Agents to do business with FFIC in a highly competitive landscape
- Improve Agent experience with ease of use and effective business processes to enhance brand loyalty

▶ **Solution:** Service-oriented Business Solution enabled Straight-through-processing of personal property quotes and billing inquiries via web and Agency Management systems with self-service tools for Agents to deliver real-time quote functionality.

▶ **Results:** Personal Property Quote (PPQ) achieved a multi-fold increase in quote volumes. PPQ rolled out to 32 states in 7 months with a 52% reuse of business services between inquiry and quote.

▶ **Implementation Details:** WebSphere Business Services Fabric was implemented as the SOA solution platform during the initial Billing Inquiry project.

Content Centric Processing

Content Centric Processing

**Content Imaging/Capture
Doc Mgmt
Web Content Mgt.**



**Process
Dev Framework
Doc Routing
Workflow**

**Compliance
Records Mgt.
Email Mgt.
Discovery**

Case Management - Microsoft Internet Explorer

Attach Document | Add Document | Queue Depth | Save

FILENET eForm Audit

Account Number: _____
Company Name: _____
Received Date: _____
Case ID: _____

Inbaskets:
Index (2)
My Work (2)
Review (1)
Matching (0)

Non-Conformance Report
Report No.: 1-10077

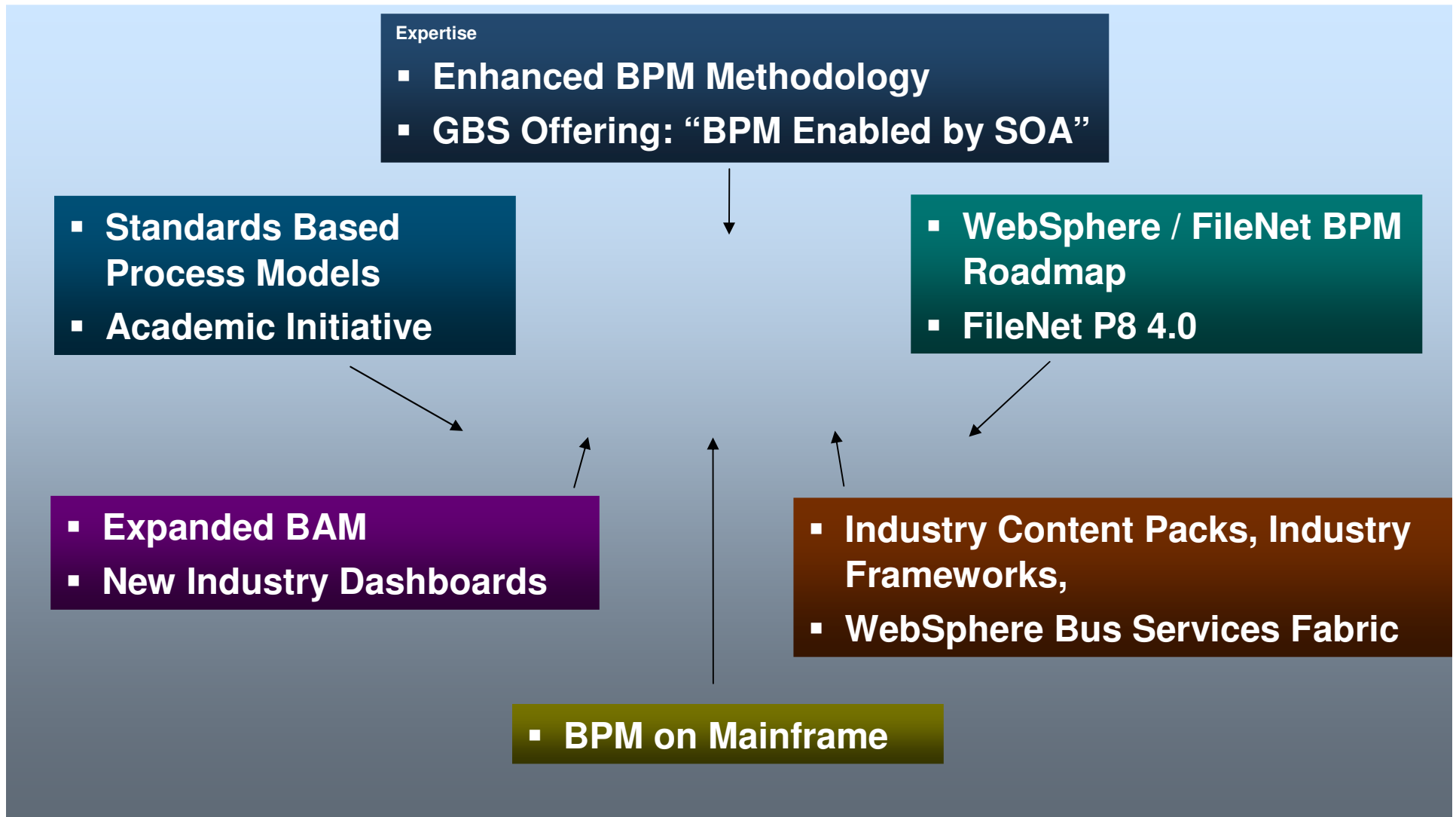
Component Number	Description	Order No.	Contract No.	Nonconformance No.	Nonconformance Description
1002	Capacitor	1000-02	02	00	000
12	Inspector 1	585-4272	001400	Invent	12 2 78 C-088

Discrepancy

10 Purchased Component	11 Cause
12 Vendor Name	13 Corrective Action
14 Vendor 2	Review packaging with vendor.
15 Date	16 Implementation Plan
16 01/05/01	All parts must have new packaging in place by 30 Jan 2001.
17 Approved By	18 Verification
01/05/01 N. Unreviewed	Reviewed on January 21, implemented on Jan 25
19 Corrective Action Back Preliminary Investigation	20 Completed By
Appears to have been damaged in transit	01/05/01
21 Completed By	22 Date
01/05/01	01/05/01
23 Corrective Action To Be Taken By	24 Date
01/05/01	01/05/01

Administrator Role: Supervisor

Summary of BPM Announcements



IBM has a complete BPMS

*“IBM is the first and so far the only infrastructure software supplier to offer a **complete BPMS** supporting the end-to-end lifecycle from analytical modeling to performance management and optimization – **based entirely on service oriented architecture.**”*

Bruce Silver, Bruce Silver Associates – The 2006 BPMS Report

IBM Leads in BPM Enabled by SOA

■ Business Expertise:

- *BPM Enabled by SOA Readiness Assessment*
- *1000+ consultants trained in BPM Methodology and BPM Enabled by SOA Engagement*
- *20 BPM Training and Education classes available*



■ Technical Leadership

- *Breadth of Offerings from Tooling to Runtime; From Dashboards to BAM; Modeling, Simulation, Choreography, Frameworks, and ECM*
- *All supported by SOA*

■ Market Recognition:

- *Leader in Gartner BPA MQ*
- *Leader in Forrester Integration, Human, and Content centric BPM WAVES*

■ Vibrant Ecosystem

- *300+ BPM Business Partners*
- *4000+ pre-builts assets in the SOA Business Catalog*

Summary: BPM enabled by SOA

Software, services, and expertise

Business-focused

Supports industry and semantic standards to increase the business value of SOA

Fast and flexible

Provides the ability to more quickly create and change SOA applications using pre-built, customizable assets

Promotes reuse

Makes it easier to reuse existing assets in SOA composite business services

Innovative

Enables creation of new and innovative applications and business models from existing IT investments

IBM delivers industry-focused SOA solutions with products and services for better and faster business results

© IBM Corporation 2007. All Rights Reserved.

The workshops, sessions and materials have been prepared by IBM or the session speakers and reflect their own views. They are provided for informational purposes only, and are neither intended to, nor shall have the effect of being, legal or other guidance or advice to any participant. While efforts were made to verify the completeness and accuracy of the information contained in this presentation, it is provided AS IS without warranty of any kind, express or implied. IBM shall not be responsible for any damages arising out of the use of, or otherwise related to, this presentation or any other materials. Nothing contained in this presentation is intended to, nor shall have the effect of, creating any warranties or representations from IBM or its suppliers or licensors, or altering the terms and conditions of the applicable license agreement governing the use of IBM software.

References in this presentation to IBM products, programs, or services do not imply that they will be available in all countries in which IBM operates. Product release dates and/or capabilities referenced in this presentation may change at any time at IBM's sole discretion based on market opportunities or other factors, and are not intended to be a commitment to future product or feature availability in any way. Nothing contained in these materials is intended to, nor shall have the effect of, stating or implying that any activities undertaken by you will result in any specific sales, revenue growth or other results.

Performance is based on measurements and projections using standard IBM benchmarks in a controlled environment. The actual throughput or performance that any user will experience will vary depending upon many factors, including considerations such as the amount of

multiprogramming in the user's job stream, the I/O configuration, the storage configuration, and the workload processed. Therefore, no assurance can be given that an individual user will achieve results similar to those stated here.

All customer examples described are presented as illustrations of how those customers have used IBM products and the results they may have achieved. Actual environmental costs and performance characteristics may vary by customer.

The following are trademarks of the International Business Machines Corporation in the United States and/or other countries. For a complete list of IBM trademarks, see

AIX, CICS, CICSplex, DB2, DB2 Universal Database, i5/OS, IBM, the IBM logo, IMS, iSeries, Lotus, OMEGAMON, OS/390, Parallel Sysplex, pureXML, Rational, RCAF, Redbooks, Sametime, System i, System i5, System z, Tivoli, WebSphere, and z/OS.

Java and all Java-based trademarks are trademarks of Sun Microsystems, Inc. in the United States, other countries, or both.

Microsoft and Windows are trademarks of Microsoft Corporation in the United States, other countries, or both.

Intel and Pentium are trademarks or registered trademarks of Intel Corporation or its subsidiaries in the United States and other countries.

UNIX is a registered trademark of The Open Group in the United States and other countries.

Linux is a registered trademark of Linus Torvalds in the United States, other countries, or both.

Other company, product, or service names may be trademarks or service marks of others.

NYS Dept of Taxation and Finance

New York State



Business Challenge: NY State Dept of Taxation and Finance (NYS DTF) processes 11 million personal and 2 million corporate returns annually using aging technology that can't keep up with the demands of citizens and users. NYS DTF needs systems and tools that are flexible, permit faster change and reduce overall costs.

- ▶ **Solution:** Leveraging SOA and BPM, NYS DTF is rapidly transforming their systems, data, people, and business processes to be more functional, flexible and responsive to citizens, users and legislation. Traditional mainframe batch processing is shifting to transactional. Manual processes are transforming to automated business processes. Real-time business activity monitoring is replacing daily printed run reports.
- ▶ **Results:** Rapid modernization of legacy batch systems to transactional. More channels to enhance voluntary compliance. Web services and XML linkage to IRS for corporate taxes. High component reuse, lowered costs. Reduced errors and business exceptions. Higher value business metrics.
- ▶ **Implementation Details:** WebSphere Business Modeler, Business Monitor, Process Server, Integration Developer, Application Server, Flat File Adapter, Commerce, DB2 V9 pureXML, DataStage, Workplace Forms, CICS Transaction Gateway, Rational Suite, Tivoli Composite Application Monitor.