

Before you begin

This document provides the basic information for getting started with IBM® SPSS® Collaboration and Deployment Services.

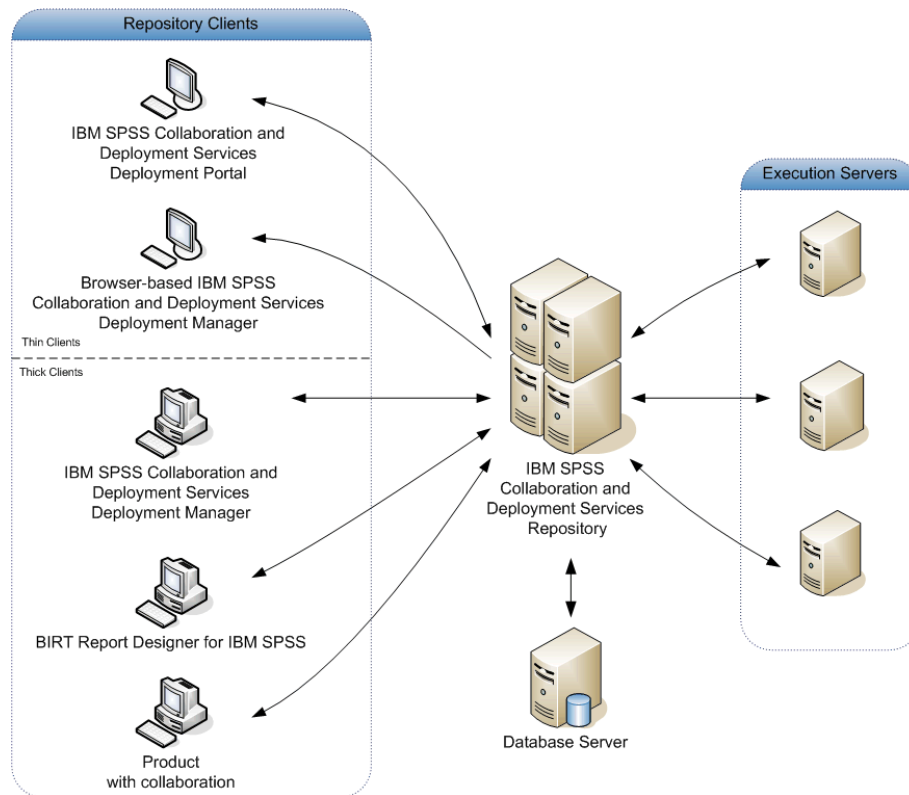
- An overview of IBM SPSS Collaboration and Deployment Services and its components
- What to do next for IBM SPSS Collaboration and Deployment Services deployment
- A list of available documentation and IBM Corp. support contact information

Overview

IBM® SPSS® Collaboration and Deployment Services is an enterprise-level application that enables widespread use and deployment of predictive analytics. The system provides centralized, secure, and auditable storage of analytical assets and advanced capabilities for management and control of predictive analytic processes, as well as sophisticated mechanisms for delivering the results of analytical processing to the end users.

Within the client-server architecture, the IBM® SPSS® Collaboration and Deployment Services Repository functions as the middle tier, enabling a seamless interaction between the client application, the database, and other systems performing analytical processing.

Figure 1-1
IBM SPSS Collaboration and Deployment Services Architecture



IBM SPSS Collaboration and Deployment Services includes the following components:

- **IBM® SPSS® Collaboration and Deployment Services Repository.** A centralized location for storing analytical assets, such as models and data.
- **IBM® SPSS® Collaboration and Deployment Services Deployment Manager.** A client application that allows users to manage the repository and to create, execute, and automate analytical tasks, such as scoring and updating the models stored in the repository.
- **IBM® SPSS® Collaboration and Deployment Services Deployment Portal.** A browser-based thin-client interface for navigating the IBM SPSS Collaboration and Deployment Services Repository, running analyses, and viewing output.
- **Browser-based Deployment Manager.** A thin-client interface for performing setup and system management tasks by administrators.
- **BIRT Report Designer for IBM® SPSS®.** An application for creating ad-hoc reports against relational and file-based data sources.
- **IBM® SPSS® Collaboration and Deployment Services Enterprise View Driver.** A component designed to provide IBM® SPSS® Statistics and third-party applications access to IBM® SPSS® Collaboration and Deployment Services Enterprise View objects stored in the repository.

The distribution disks includes the installation files and documentation for the following components:

- IBM SPSS Collaboration and Deployment Services Repository server
- Deployment Manager
- BIRT Report Designer for IBM SPSS
- IBM SPSS Collaboration and Deployment Services Enterprise View Driver
- Web installation components
- IBM® SPSS® Collaboration and Deployment Services Remote Process Server
- IBM® SPSS® Collaboration and Deployment Services Portlet
- IBM® SPSS® Collaboration and Deployment Services Web Part
- IBM® SPSS® Collaboration and Deployment Services - Essentials for Python

The SPSS Statistics, IBM® ShowCase®, IBM® SPSS® Data Collection, and IBM® SPSS® Modeler desktop client and server applications are not part of IBM SPSS Collaboration and Deployment Services and must be purchased and installed separately.

What to do next

Depending on your position within the organization, you are likely to take on one of the following user roles:

- **Administrator.** An administrator is a network or systems specialist responsible for configuration and maintenance of IBM® SPSS® Collaboration and Deployment Services, primarily using IBM® SPSS® Collaboration and Deployment Services Deployment Manager to manage the content, configuration, security, and optional components.

- **Analyst.** An analyst develops models and performs analyses in IBM® SPSS® Statistics, IBM® SPSS® Modeler, or SAS, primarily using the repository to store models and data, and Deployment Manager to create jobs and automate and monitor processing.
- **Report designer.** A report designer creates business and executive reports, using BIRT Report Designer for IBM® SPSS® or IBM® ShowCase® tools to create the reports and store them in the repository. The report designer also uses IBM® SPSS® Collaboration and Deployment Services Deployment Portal to run the reports.
- **Application developer.** An application developer creates custom applications that use IBM SPSS Collaboration and Deployment Services web services, IBM® SPSS® Collaboration and Deployment Services Tag Library, portal integration capabilities, and IBM® SPSS® Collaboration and Deployment Services - Essentials for Python.
- **Executive-level consumer of analytical information.** An executive-level consumer uses the results of analytical processing and business intelligence reporting for decision making, accessing objects in the repository through Deployment Portal.

Other user roles may exist in certain organizations, and some roles may intersect or even be combined in a single person.

An administrator must follow these general guidelines for installing and configuring IBM SPSS Collaboration and Deployment Services:

1. Provision the database, the application server, and other required software and hardware components.
2. Install IBM® SPSS® Collaboration and Deployment Services Repository. Thin clients are part of the repository and do not require separate installation. They can be accessed through a web browser once the repository is started.
3. Install Deployment Manager.
4. Start the repository, specify repository configuration settings, define users, and assign action-based roles through Deployment Manager and the browser-based IBM® SPSS® Collaboration and Deployment Services Deployment Manager.
5. Install client applications on non-administrative users' workstations. Install Deployment Manager for analysts to enable them to create, run, and automate jobs. It is also necessary to ensure that the software that performs analytical processing (SPSS Statistics, SPSS Modeler, or SAS) is installed and configured to interact with IBM SPSS Collaboration and Deployment Services. Install BIRT Report Designer for IBM SPSS for users who will be creating reports.

For detailed information on provisioning, installing, and configuring the repository, see the repository installation and configuration guide. For client installation information, see the Deployment Manager and BIRT Report Designer for IBM SPSS installation instructions. For customization and developer information, see the *IBM SPSS Collaboration and Deployment Services Customization Reference* and web services documentation.

Getting help

Documentation

IBM® SPSS® Collaboration and Deployment Services documentation can be accessed in the following ways:

- From the installation disks
- As part of installed applications
- As online help

The following documentation is available in the *Documentation* folder of the installation disks:

Document	Filename
<i>Before You Begin</i>	<i>BeforeYouBegin.pdf</i>
<i>IBM SPSS Collaboration and Deployment Services Installation and Configuration Guide</i>	<i>RepositoryConfigWin.pdf</i> <i>RepositoryConfigUnix.pdf</i> <i>RepositoryConfigIBMi.pdf</i>
<i>IBM® SPSS® Collaboration and Deployment Services Deployment Manager Installation Instructions</i>	<i>ManagerInstall.pdf</i>
<i>BIRT Report Designer for IBM® SPSS® Installation Instructions</i>	<i>BIRTDesignerInstall.pdf</i>
<i>IBM SPSS Collaboration and Deployment Services Administrator's Guide</i>	<i>AdministratorGuide.pdf</i>
<i>Deployment Manager User's Guide</i>	<i>UserGuide.pdf</i>
<i>IBM® SPSS® Collaboration and Deployment Services Enterprise View Driver Guide</i>	<i>EVDriver.pdf</i>
<i>IBM SPSS Collaboration and Deployment Services Customization Reference</i>	<i>CustomizationReference.pdf</i>
<i>IBM® SPSS® Collaboration and Deployment Services - Essentials for Python Reference</i>	<i>ScriptingReference.pdf</i>

Once IBM SPSS Collaboration and Deployment Services components have been installed, the documentation can be found in the following locations:

Document	File Path
<i>IBM SPSS Collaboration and Deployment Services Administrator's Guide</i>	<i><IBM® SPSS® Collaboration and Deployment Services Repository Installation Directory>/help/en/Documentation/AdministratorGuide.pdf</i>
<i>Deployment Manager 4.2 User's Guide</i>	<i><Deployment Manager Installation Directory>/Documentation/UserGuide.pdf</i>

The browser-based IBM® SPSS® Collaboration and Deployment Services Deployment Manager also provides a link to the *IBM SPSS Collaboration and Deployment Services Administrator's Guide* from the navigation bar. Deployment Manager, BIRT Report Designer for IBM SPSS, and IBM® SPSS® Collaboration and Deployment Services Deployment Portal have extensive online help systems.

Developer resources

The IBM SPSS Collaboration and Deployment Services developer kit includes web services documentation in Acrobat format; the documentation is also available in HTML format and can be deployed into the repository as a package. Additionally, the developer kit includes a fully documented sample web services application. To request the IBM SPSS Collaboration and Deployment Services developer kit, contact IBM Corp. Technical Support.

Technical support

Technical support is available to maintenance customers. Customers may contact Technical Support for assistance in using IBM Corp. products or for installation help for one of the supported hardware environments. To reach Technical Support, see the IBM Corp. web site at <http://www.ibm.com/support>. Be prepared to identify yourself, your organization, and your support agreement when requesting assistance.