

IBM SPSS Collaboration and Deployment Services
Repository
Version 8 Release 0

Installation and Configuration Guide



Note

Before using this information and the product it supports, read the information in "Notices" on page 61.

Product Information

This edition applies to version 8, release 0, modification 0 of IBM SPSS Collaboration and Deployment Services and to all subsequent releases and modifications until otherwise indicated in new editions.

© Copyright IBM Corporation 2000, 2016.

US Government Users Restricted Rights – Use, duplication or disclosure restricted by GSA ADP Schedule Contract with IBM Corp.

Contents

Chapter 1. Overview	1	Chapter 6. Single sign-on.	39
IBM SPSS Collaboration and Deployment Services	1	Directory configuration for single sign-on	40
Collaboration	1	OpenLDAP	40
Deployment	2	Active Directory	41
System architecture	2	Kerberos server configuration	42
IBM SPSS Collaboration and Deployment Services		Application server configuration for single sign-on	42
Repository	3	WebSphere	42
IBM SPSS Deployment Manager	4	JBoss	43
IBM SPSS Collaboration and Deployment Services		WebLogic	44
Deployment Portal	4	Updating Windows registry for single sign-on.	44
Execution servers	5	Configuring one-way trust relationships	45
Scoring server	5	Server Process Credential configuration	46
IBM Analytical Decision Management	5	Configuring browsers for single sign-on	47
Chapter 2. What is new for installers	7	Forwardable tickets and IBM SPSS Deployment Manager	48
What has changed in this release	7	Chapter 7. Application context roots	49
Deprecated features	7	Configuring application context roots.	49
Chapter 3. Installation.	9	Adding a context root to the URL Prefix.	50
Pre-installation.	9	Updating context roots for WebSphere	50
Planning your installation	10	Updating context roots for JBoss	51
Host system requirements	10	Updating context roots for WebLogic	51
Application server	11	Chapter 8. FIPS 140–2 compliance	53
Database	14	Repository configuration	53
Installation and configuration	18	Desktop client configuration.	54
Installation	19	Browser configuration	54
Configuration	19	Chapter 9. Using SSL to secure data transfer	55
Manual deployment	22	How SSL works	55
Cluster configuration	24	Securing client/server and server-server communications with SSL	55
Post-installation	28	Installing unlimited strength encryption	55
Starting the repository server	28	Adding the certificate to client keystore (for connections to the repository)	56
Verifying connectivity	29	Importing the certificate file for browser-based client connections	56
Managing the database password	29	Instructing users to enable SSL	56
JDBC drivers	30	URL prefix configuration	57
IBM SPSS products compatibility	31	Securing LDAP with SSL	57
Web installations from the repository	32	Chapter 10. Logging	59
Uninstalling	32	Notices	61
Chapter 4. Migration	33	Privacy policy considerations	62
Installing with a copy of the repository database	33	Trademarks	63
Installing with an existing repository database.	34	Index	65
Migrating to a different database	34		
Additional migration considerations	35		
Migrating passwords	35		
JMS store migration on WebSphere	35		
JMS store migration on WebLogic	36		
Migrating notification templates	36		
Chapter 5. Package management	37		
Installing packages	37		

Chapter 1. Overview

IBM SPSS Collaboration and Deployment Services

IBM® SPSS® Collaboration and Deployment Services is an enterprise-level application that enables widespread use and deployment of predictive analytics.

IBM SPSS Collaboration and Deployment Services provides centralized, secure, and auditable storage of analytical assets and advanced capabilities for management and control of predictive analytic processes, as well as sophisticated mechanisms for delivering the results of analytical processing to users. The benefits of IBM SPSS Collaboration and Deployment Services include:

- Safeguarding the value of analytical assets
- Ensuring compliance with regulatory requirements
- Improving the productivity of analysts
- Minimizing the IT costs of managing analytics

IBM SPSS Collaboration and Deployment Services allows you to securely manage diverse analytical assets and fosters greater collaboration among those developing and using them. Furthermore, the deployment facilities ensure that people get the information they need to take timely, appropriate action.

Collaboration

Collaboration refers to the ability to share and reuse analytic assets efficiently, and is the key to developing and implementing analytics across an enterprise.

Analysts need a location in which to place files that should be made available to other analysts or business users. That location needs a version control implementation for the files to manage the evolution of the analysis. Security is required to control access to and modification of the files. Finally, a backup and restore mechanism is needed to protect the business from losing these crucial assets.

To address these needs, IBM SPSS Collaboration and Deployment Services provides a repository for storing assets using a folder hierarchy similar to most file systems. Files stored in the IBM SPSS Collaboration and Deployment Services Repository are available to users throughout the enterprise, provided those users have the appropriate permissions for access. To assist users in finding assets, the repository offers a search facility.

Analysts can work with files in the repository from client applications that leverage the service interface of IBM SPSS Collaboration and Deployment Services. Products such as IBM SPSS Statistics and IBM SPSS Modeler allow direct interaction with files in the repository. An analyst can store a version of a file in development, retrieve that version at a later time, and continue to modify it until it is finalized and ready to be moved into a production process. These files can include custom interfaces that run analytical processes allowing business users to take advantage of an analyst's work.

The use of the repository protects the business by providing a central location for analytical assets that can be easily backed-up and restored. In addition, permissions at the user, file, and version label levels control access to individual assets. Version control and object version labels ensure the correct versions of assets are being used in production processes. Finally, logging features provide the ability to track file and system modifications.

Deployment

To realize the full benefit of predictive analytics, the analytic assets need to provide input for business decisions. Deployment bridges the gap between analytics and action by delivering results to people and processes on a schedule or in real time.

In IBM SPSS Collaboration and Deployment Services, individual files stored in the repository can be included in processing **jobs**. Jobs define an execution sequence for analytical artifacts and can be created with IBM SPSS Deployment Manager. The execution results can be stored in the repository, on a file system, or delivered to specified recipients. Results stored in the repository can be accessed by any user with sufficient permissions using the IBM SPSS Collaboration and Deployment Services Deployment Portal interface. The jobs themselves can be triggered according to a defined schedule or in response to system events.

In addition, the scoring service of IBM SPSS Collaboration and Deployment Services allows analytical results from deployed models to be delivered in real time when interacting with a customer. An analytical model configured for scoring can combine data collected from a current customer interaction with historical data to produce a score that determines the course of the interaction. The service itself can be leveraged by any client application, allowing the creation of custom interfaces for defining the process.

The deployment facilities of IBM SPSS Collaboration and Deployment Services are designed to easily integrate with your enterprise infrastructure. Single sign-on reduces the need to manually provide credentials at various stages of the process. Moreover, the system can be configured to be compliant with Federal Information Processing Standard Publication 140-2.

System architecture

In general, IBM SPSS Collaboration and Deployment Services consists of a single, centralized IBM SPSS Collaboration and Deployment Services Repository that serves a variety of clients, using execution servers to process analytical assets.

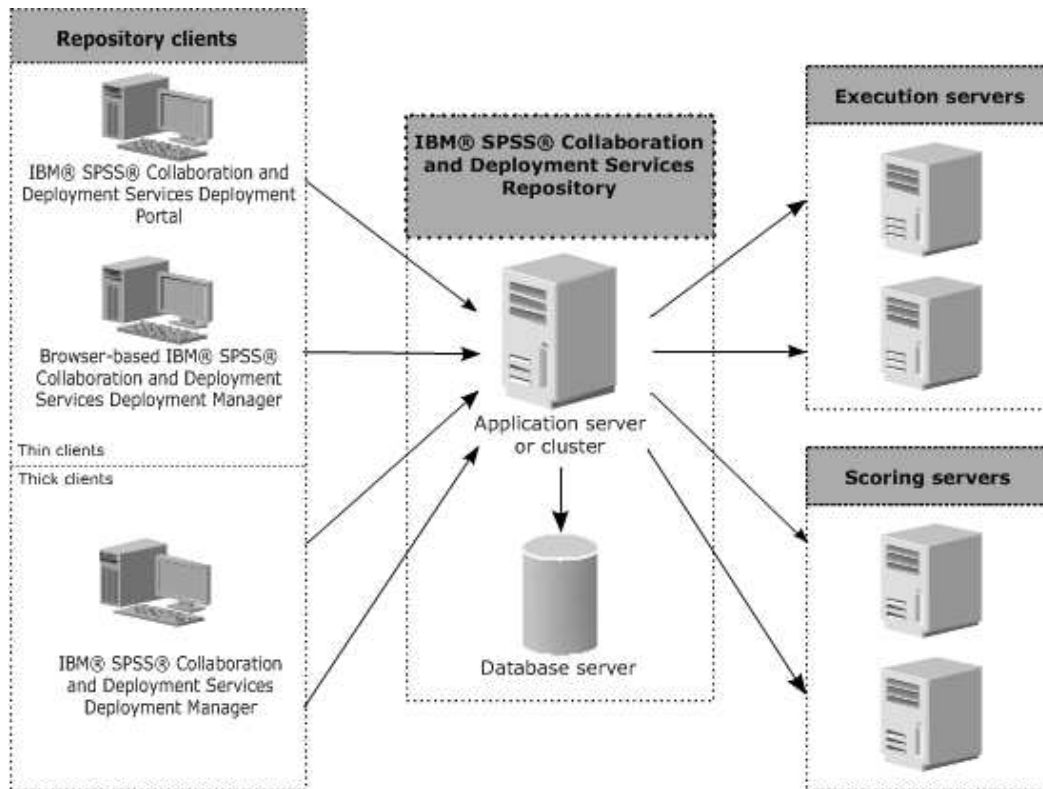


Figure 1. IBM SPSS Collaboration and Deployment Services Architecture

IBM SPSS Collaboration and Deployment Services consists of the following components:

- IBM SPSS Collaboration and Deployment Services Repository for analytical artifacts
- IBM SPSS Deployment Manager
- IBM SPSS Collaboration and Deployment Services Deployment Portal
- Browser-based IBM SPSS Deployment Manager

IBM SPSS Collaboration and Deployment Services Repository

The repository provides a centralized location for storing analytical assets, such as models and data. The repository requires an installation of a relational database, such as IBM DB2, Microsoft SQL Server, or Oracle.

The repository includes facilities for:

- Security
- Version control
- Searching
- Auditing

Configuration options for the repository are defined using the IBM SPSS Deployment Manager or the browser-based IBM SPSS Deployment Manager. The contents of the repository are managed with the Deployment Manager and accessed with the IBM SPSS Collaboration and Deployment Services Deployment Portal.

IBM SPSS Deployment Manager

IBM SPSS Deployment Manager is a client application for IBM SPSS Collaboration and Deployment Services Repository that enables users to schedule, automate, and execute analytical tasks, such as updating models or generating scores.

The client application allows a user to perform the following tasks:

- View any existing files within the system, including reports, SAS syntax files, and data files
- Import files into the repository
- Schedule jobs to be executed repeatedly using a specified recurrence pattern, such as quarterly or hourly
- Modify existing job properties
- Determine the status of a job
- Specify email notification of job status

In addition, the client application allows users to perform administrative tasks for IBM SPSS Collaboration and Deployment Services, including:

- Manage users
- Configure security providers
- Assign roles and actions

Browser-based IBM SPSS Deployment Manager

The browser-based IBM SPSS Deployment Manager is a thin-client interface for performing setup and system management tasks, including:

- Setting system configuration options
- Configuring security providers
- Managing MIME types

Non-administrative users can perform any of these tasks provided they have the appropriate actions associated with their login credentials. The actions are assigned by an administrator.

You typically access the browser-based IBM SPSS Deployment Manager at the following URL:

`http://<host IP address>:<port>/security/login`

Note: An IPv6 address must be enclosed in square brackets, such as `[3ffe:2a00:100:7031::1]`.

If your environment is configured to use a custom context path for server connections, include that path in the URL.

`http://<host IP address>:<port>/<context path>/security/login`

IBM SPSS Collaboration and Deployment Services Deployment Portal

IBM SPSS Collaboration and Deployment Services Deployment Portal is a thin-client interface for accessing the repository. Unlike the browser-based IBM SPSS Deployment Manager, which is intended for administrators, IBM SPSS Collaboration and Deployment Services Deployment Portal is a web portal serving a variety of users.

The web portal includes the following functionality:

- Browsing the repository content by folder
- Opening published content
- Running jobs and reports
- Generating scores using models stored in the repository

- Searching repository content
- Viewing content properties
- Accessing individual user preferences, such as email address and password, general options, subscriptions, and options for output file formats

You typically access the home page at the following URL:

`http://<host IP address>:<port>/peb`

Note: An IPv6 address must be enclosed in square brackets, such as `[3ffe:2a00:100:7031::1]`.

If your environment is configured to use a custom context path for server connections, include that path in the URL.

`http://<host IP address>:<port>/<context path>/peb`

Execution servers

Execution servers provide the ability to execute resources stored within the repository. When a resource is included in a job for execution, the job step definition includes the specification of the execution server used for processing the step. The execution server type depends on the resource.

Execution servers currently supported by IBM SPSS Collaboration and Deployment Services include:

- **SAS.** The SAS execution server is the SAS executable file *sas.exe*, included with Base SAS® Software. Use this execution server to process SAS syntax files.
- **Remote Process.** A remote process execution server allows processes to be initiated and monitored on remote servers. When the process completes, it returns a success or failure message. Any machine acting as a remote process server must have the necessary infrastructure installed for communicating with the repository.

Execution servers that process other specific types of resources can be added to the system by installing the appropriate adapters. For information, consult the documentation for those resource types.

During job creation, assign an execution server to each step included in the job. When the job executes, the repository uses the specified execution servers to perform the corresponding analyses.

Scoring server

IBM SPSS Collaboration and Deployment Services Scoring Service is also available as a separately deployable application, the Scoring Server.

The Scoring Server improves deployment flexibility in several key areas:

- Scoring performance can be scaled independently from other services
- Scoring Server(s) can be independently configured to dedicate computing resources to one or any number IBM SPSS Collaboration and Deployment Services scoring configurations
- Scoring Server operating system and processor architecture does not need match the IBM SPSS Collaboration and Deployment Services Repository or other Scoring Servers
- Scoring Server application server does not need match the application server used for IBM SPSS Collaboration and Deployment Services Repository or other Scoring Servers

IBM Analytical Decision Management

IBM SPSS Collaboration and Deployment Services are a prerequisite for installing IBM Analytical Decision Management, a suite of applications for integrating predictive analytics with operational decision-making. IBM Analytical Decision Management uses high-speed scoring, master data

management, and process automation facilities of IBM SPSS Collaboration and Deployment Services to optimize and automate high-volume decisions and produce improved outcomes in specific business situations.

Chapter 2. What is new for installers

IBM SPSS Collaboration and Deployment Services Repository 8 delivers new capabilities that can help you simplify deployment of predictive analytics and manage costs.

More operating platforms support

IBM SPSS Collaboration and Deployment Services Repository 8 includes support for new versions of operating systems, application servers, databases, virtualization environments, and web browsers.

IBM WebSphere Application Server for IBM SPSS Collaboration and Deployment Services Repository

IBM SPSS Collaboration and Deployment Services includes the single-server, base IBM WebSphere Application Server for use with IBM SPSS Collaboration and Deployment Services Repository. You can either use this application server or provide an alternative supported application server.

IBM WebSphere Application Server Liberty Profile for IBM SPSS Collaboration and Deployment Services Scoring Server

IBM SPSS Collaboration and Deployment Services Scoring Server includes WebSphere Application Server Liberty Profile to simplify installation and deployment. You can either use this application server or provide another one.

SSL for IBM SPSS Collaboration and Deployment Services Remote Process Server

You can configure IBM SPSS Collaboration and Deployment Services Remote Process Server to use SSL.

What has changed in this release

The following are no longer supported:

- IBM iSeries
- IBM WebSphere Application Server 7.x
- Oracle WebLogic Server 11gR1 PS5 (10.3.6)
- Red Hat JBoss EAP 6.1.0 Alpha
- IBM DB2 9.5
- IBM DB2 for i5/OS
- Teradata Enterprise Data Warehouse 13.1 (data source only)
- Solaris

Deprecated features

If you are migrating from an earlier release of IBM SPSS Collaboration and Deployment Services, you should be aware of the various features that have been deprecated since the last version.

If a feature is deprecated, IBM Corp. might remove this capability in a subsequent release of the product. Future investment will be focussed on the strategic function listed under recommended migration action. Typically, a feature is not deprecated unless an equivalent alternative is provided.

The following tables indicate what is deprecated. Where possible, the table also indicates the recommended migration action.

Table 1. Features deprecated in previous versions

Deprecation	Recommended migration action
Security Provider: Active Directory with local override, which supports extended groups and allowed users	Use the standard Active Directory security provider with any necessary groups added
IBM SPSS Collaboration and Deployment Services Enterprise View	Use the Analytic Data View feature
IBM SPSS Collaboration and Deployment Services Enterprise View Driver	Use the Analytic Data View feature
Scenario files	Scenario files (.scn) are no longer supported. Enterprise View source nodes cannot be modified in Deployment Manager. Old scenario files can be modified in IBM SPSS Modeler client and resaved as stream files. Also, scoring configurations that used a scenario file must be deleted and recreated based on a stream file.
Web Install for IBM SPSS Deployment Manager	Use the standalone installer
BIRT Report Designer for IBM SPSS	None
BIRT Report Designer for IBM SPSS viewer	None
IBM SPSS Collaboration and Deployment Services Portlet	Use the IBM SPSS Collaboration and Deployment Services Deployment Portal directly, or use the web services APIs
IBM SPSS Collaboration and Deployment Services Web Part	Use the IBM SPSS Collaboration and Deployment Services Deployment Portal directly, or use the web services APIs
Scoring Service V1 API	Scoring Service V2 API
Scheduling Server Service	None
Reporting Service	None
Authentication Service login operation	Authentication Service doLogin operation
Search Service search operation	Search Service search2.5 operation
SPSS AXIS/Castor web services client jar	Use the tools provided with the Java Runtime Environment, Integrated Development Environment, or Eclipse Web Tools Platform (WTP)

For updated information about deprecated features, see the IBM Knowledge Center.

Chapter 3. Installation

This chapter provides the information about installing IBM SPSS Collaboration and Deployment Services Repository. The process consists of a number of pre-installation, installation and configuration, and post-installation steps.

- **Pre-installation** steps for setting up the application environment include determining the system requirements based on the installation type and projected system use, provisioning the machine(s) to run the application server or server cluster, making sure the server(s) meet all hardware and software requirements, configuring the application server or cluster, and configuring the database. It may also be necessary to migrate the content from the previous installation to the new database using database copy tools.
- **Installation and configuration** steps include installing the application files on the host system using IBM Installation Manager and subsequent IBM SPSS Collaboration and Deployment Services Repository configuration to run with the designated application server or server cluster and the repository database.
- **Post-installation** steps include starting IBM SPSS Collaboration and Deployment Services Repository, verifying connectivity, configuring autostart, installing additional database drivers, optional components, and content adapters for other IBM SPSS products.

Note that in some environments IBM SPSS Collaboration and Deployment Services Repository deployment may also require a number of optional enterprise configuration steps related to the application security, access control, and notification capabilities.

- Email and RSS notifications. For more information, see the corresponding chapter of the administrator's guide.
- Secure repository connection. See the topic Chapter 9, "Using SSL to secure data transfer," on page 55 for more information.
- FIPS 140-2 security and secure repository database connection. See the topic Chapter 8, "FIPS 140-2 compliance," on page 53 for more information.
- Single sign-on. See the topic Chapter 6, "Single sign-on," on page 39 for more information.

Pre-installation

Before you install IBM SPSS Collaboration and Deployment Services, you must set up the resources in your environment so that the components can operate. For example, you must create a database for the content repository, and configure an application server.

Use the following checklist to guide you through the pre-installation process:

- Determine the installation type based on projected system use and the corresponding system requirements.
- Provision the machine(s) to run the application server or server cluster. Make sure the server(s) meet all hardware and software requirements.
- Verify installing user authority and host file system permissions.
- Configure the application server or cluster.
- Configure the database. If necessary, migrate the content from the previous installation to the new database using database copy tools. See the topic Chapter 4, "Migration," on page 33 for more information.

Planning your installation

Before installing IBM SPSS Collaboration and Deployment Services Repository, you must determine the installation type in order to be able to set up the application environment. IBM SPSS Collaboration and Deployment Services Repository is an enterprise-level system that requires integration with multiple IBM Corp. and third-party components and technologies. In its most basic configuration, it requires a preexisting installation of an application server to run the Web services that enable the application's functionality, and a relational database, such as IBM DB2 UDB, Oracle, or Microsoft SQL Server to store analytical artifacts and application settings.

Use the following guidelines when planning your installation:

- In operational environments, the repository must be installed on a server-grade system. See the topic “Host system requirements” for more information. Running the repository database on a separate dedicated server may improve overall system performance.
- In enterprise environments with large processing loads (for example, producing real-time scores) and a greater number of users, scaling up with an application server cluster rather than a stand-alone application server is recommended.
- While the repository can be installed and run on a desktop workstation or a notebook for educational and demonstration purposes, it cannot be run on such systems in a production environment.

When planning your IBM SPSS Collaboration and Deployment Services Repository deployment, you must also consider the additional requirements of a production environment. For example, to enable the processing of analytical artifacts and scoring, it may be necessary to set up execution servers, such as IBM SPSS Statistics and IBM SPSS Modeler servers, which may also require dedicated hardware and network resources. To enable the email notifications functionality, an SMTP server must be available. It may also be necessary to configure repository authentication through an external directory system and single sign-on with a Kerberos server.

Host system requirements

Before installing IBM SPSS Collaboration and Deployment Services Repository, verify that the following hardware and software requirements have been met. If you are installing with an application server cluster, the requirements must be met on all nodes.

For current system requirements information, refer to the software product compatibility reports on the IBM Technical Support site at: <http://publib.boulder.ibm.com/infocenter/prodguid/v1r0/clarity/softwareReqsForProduct.html>

Important: The specified amount of RAM is the minimum required to successfully install and start the repository. Depending on the types of analytical processing performed by IBM SPSS Collaboration and Deployment Services, runtime memory requirements may be significantly higher and use a large portion of RAM typically installed on a server-grade system. Note that installing repository adapters for other IBM SPSS products, such as IBM SPSS Modeler adapter, requires additional dedicated memory. It is recommended to consult the application server documentation when estimating for memory requirements for your selected application server.

If installing into WebSphere, the WebSphere profile used with IBM SPSS Collaboration and Deployment Services must be configured to run with Java 7 SDK. See “WebSphere” on page 12.

Additional requirements

IBM Installation Manager (for all operating systems)

IBM Installation Manager 1.8.0 or higher (1.8.3 is recommended) must be installed and configured to use a repository which contains IBM SPSS Collaboration and Deployment Services installation files.

If IBM Installation Manager is not already present on the system, it will be automatically installed when you launch the IBM SPSS Collaboration and Deployment Services installation. If you have an older version of IBM Installation Manager, you will be required to update it as part of the installation.

If IBM Installation Manager is not automatically installed and it is not present on the system, download and install IBM Installation Manager from the IBM Corp. support site (<http://www.ibm.com/support>). For download location and user information, see the IBM Installation Manager documentation: <http://www-01.ibm.com/support/knowledgecenter/SSDV2W/welcome>.

UNIX and Linux

- X Window System Terminal software is required for IBM SPSS Collaboration and Deployment Services Repository GUI-based installation. Alternatively, it may be possible to run the server in headless mode (Java command line option `-Djava.awt.headless=true`) or use PJA (Pure Java AWT) Toolkit.

User and file system permissions

As a general rule, you should install and configure the repository with the same user permissions that were used to install and configure the application server. See seeing your application server vendor documentation for information about supporting installations as a non-root/non-administrator user.

The user installing the repository must have the following permissions on the host system:

- Write permissions to the installation directory and subdirectories.
- Write permissions to the deployment and configuration directories and read and execute permissions to other application server directories.
- When the repository is installed with an application server cluster, the repository installation directory on the machine hosting the management profile (WebSphere) or adminServer (WebLogic) must be shared to be available to all nodes of the cluster.

Note: When installing IBM SPSS content adapters, you must use the same user that was used for IBM SPSS Collaboration and Deployment Services Repository installation.

Important: If you install IBM SPSS Collaboration and Deployment Services Repository on Windows by using an administrator account, you will need to use the administrator privilege to run all accompanying utilities and scripts, such as the configuration utility.

Virtualization

IBM SPSS Collaboration and Deployment Services Repository or client components can be deployed into virtualized environments provided by third-party software. For example, in order to simplify deployment of a development or testing environment, a system administrator can configure a virtual server on which to install IBM SPSS Collaboration and Deployment Services. The virtual machines hosting IBM SPSS Collaboration and Deployment Services components must meet minimum system requirements. See the topic “Host system requirements” on page 10 for more information.

Assuming that the configured virtualized environment meets the minimum system requirements, no performance degradation of IBM SPSS Collaboration and Deployment Services Repository or client installations is expected. It is important to note, however, that virtualized systems might share available physical resources, and resource contention on systems with a heavy processing load can cause performance degradation of the hosted IBM SPSS Collaboration and Deployment Services installations.

Note that additional restrictions on deployment into virtualized environments may exist if the application server used to run the repository cannot be deployed into these environments.

Application server

Before you install IBM SPSS Collaboration and Deployment Services Repository, a supported application server or a server cluster must be installed and accessible.

You can use either the single-server, base IBM WebSphere Application Server included with IBM SPSS Collaboration and Deployment Services or any other supported application server. The included application server is licensed only for use with IBM SPSS Collaboration and Deployment Services Repository and cannot be used in a cluster environment. For more information about IBM WebSphere, see the product documentation in the IBM Knowledge Center

If the repository is reinstalled, re-create the application server, for example, by deploying a new WebSphere profile. Make sure that the latest versions of vendor patches are applied to application server installations. When you install the IBM SPSS Collaboration and Deployment Services Repository with an application server cluster, all cluster nodes must have the same version of the application server and run on the same operating system.

The application server must be set up with an appropriate JRE. Verify that you are running Java in 64-bit mode and that your application server is working properly in 64-bit mode before you attempt to install IBM SPSS Collaboration and Deployment Services Repository. For example, if you are using JBoss and have both a 32-bit and a 64-bit JDK installed, configure the JVM to run in 64-bit mode by specifying the `-d64` option for the Java command. For more information, see the application server vendor documentation.

Important: To support connections from web browsers that have disabled cookies, you must enable URL rewriting for your application server. In WebSphere, for example, this setting is available in the administration console at **Application servers > *server1* > Web container > Session management > Enable URL rewriting**. For more information, see your application server documentation.

Restriction: URL rewriting is not supported by features that were deprecated in past releases. Those features might require that cookies be enabled.

WebSphere

IBM SPSS Collaboration and Deployment Services Repository can be run with a stand-alone WebSphere server, a managed server, or a cluster.

Before installing with a stand-alone WebSphere server

- Create a new profile for every installation using the default application profile template.

Before installing with a managed WebSphere server

- Create the deployment management profile.
- Start management profile.
- Create the managed profile.
- Add a managed node to the management profile.
- Using WebSphere console, create the managed server based on the managed node.

Before installing with a WebSphere cluster

- Create the cluster and make sure it is accessible through the load balancer.

Before installing with a WebSphere Application Server Network Deployment topology

Increase the default memory configuration for the WebSphere Deployment Manager (**dmgr**) process and the WebSphere Nodeagent processes. The actual memory requirements depend on your system. For example, a minimum memory configuration would be to increase the memory as follows:

- For the WebSphere Deployment Manager process, increase the minimum heap size to 512 and the maximum heap size to 1024
- For the WebSphere Nodeagent processes, increase the minimum heap size to 256 and the maximum heap size to 512

Configuring your profile to run with Java 7

Before installing IBM SPSS Collaboration and Deployment Services into WebSphere, the WebSphere profile used with IBM SPSS Collaboration and Deployment Services must be configured to run with Java 7 SDK as follows:

1. Download and install **IBM WebSphere SDK Java Technology Edition Version 7.0** into the WebSphere 8.5.x installation. See http://www-01.ibm.com/support/knowledgecenter/SSEQTP_8.5.5/com.ibm.websphere.installation.base.doc/ae/tins_installation_jdk7.html.
2. Once installed, configure the WebSphere profile for IBM SPSS Collaboration and Deployment Services to use the Java 7 SDK. See http://www-01.ibm.com/support/knowledgecenter/SSAW57_8.5.5/com.ibm.websphere.nd.multiplatform.doc/ae/rxml_managesdk.html.
3. WebSphere allows the SDK to be configured globally (all profiles) or per-profile. To set Java 7 SDK for a specific WebSphere profile:

From the <app_server_root>/bin directory:

- a. Step 1: (optional) View a list of available SDK names for the product installation (confirm Java 7 SDK is present). For example:

```
C:\IBM\WebSphere\AppServer\bin> managesdk -listAvailable
CWSDK1003I: Available SDKs :
CWSDK1005I: SDK name: 1.6_64
CWSDK1005I: SDK name: 1.7_64
CWSDK1001I: Successfully performed the requested managesdk task.
```

- b. Step 2: Set the profile used for IBM SPSS Collaboration and Deployment Services to the Version 7.0 SDK. For example:

```
C:\IBM\WebSphere\AppServer\bin>managesdk -enableProfile -profileName CADS -sdkname 1.7_64 -enableServers
CWSDK1017I: Profile CADS now enabled to use SDK 1.7_64.
CWSDK1001I: Successfully performed the requested managesdk task.
```

Or to set Java 7 SDK for all WebSphere profiles (and any subsequent profiles created):

The following example demonstrates the sequence of commands to use for listing available SDKs, changing the default SDK to a Version 7.0 SDK and, if profiles exist already, enabling the profiles to use the Version 7.0 SDK.

- a. Step 1: (optional) View a list of available SDK names for the product installation (confirm Java 7 SDK is present):

```
C:\IBM\WebSphere\AppServer\bin> managesdk -listAvailable
CWSDK1003I: Available SDKs :
CWSDK1005I: SDK name: 1.6_64
CWSDK1005I: SDK name: 1.7_64
CWSDK1001I: Successfully performed the requested managesdk task.
```

- b. Step 2: Set the command default to the Version 7.0 SDK:

```
C:\IBM\WebSphere\AppServer\bin>managesdk -setCommandDefault -sdkname 1.7_64
CWSDK1021I: The command default SDK name is now set to 1.7_64.
CWSDK1001I: Successfully performed the requested managesdk task.
```

- c. Step 3: Set the new profile default to the Version 7.0 SDK:

```
C:\IBM\WebSphere\AppServer\bin>managesdk -setNewProfileDefault -sdkname 1.7_64
CWSDK1022I: New profile creation will now use SDK name 1.7_64.
CWSDK1001I: Successfully performed the requested managesdk task.
```

- d. Step 4: If profiles already exist, enable the profiles to use the Version 7.0 SDK:

```
C:\IBM\WebSphere\AppServer\bin>managesdk -enableProfileAll -sdkname 1.7_64 -enableServers
CWSDK1017I: Profile DEPLOYMENT now enabled to use SDK 1.7_64.
CWSDK1001I: Successfully performed the requested managesdk task.
```

To change federated profiles in a Network Deployment installation, the deployment manager must be running. The managesdk command updates the master configuration repository. After the command runs, a synchronization operation must occur before the new SDK can be used for the federated profiles.

JBoss

IBM SPSS Collaboration and Deployment Services Repository can be run only with a stand-alone JBoss server.

Before installing with JBoss

- Create a new server for every repository installation.

Note:

- It is recommended that only one instance of the server be run. If multiple instances of the repository must be set up on a single machine using JBoss, consult the JBoss documentation.
- To avoid errors at repository startup, it is recommended that JBoss application server installation path not contain any spaces, for example, as in `c:\jboss-eap-6.1`.
- If you are running JBoss in an IPv6 environment, some additional application server configuration is needed. For more information, see the Red Hat JBoss documentation.

WebLogic

IBM SPSS Collaboration and Deployment Services Repository can be run with a stand-alone WebLogic server or a cluster.

Before installing with a stand-alone WebLogic server

- Create a new server for every repository installation.

Before installing with a managed WebLogic server

- Created a new managed server for every repository installation.

Before installing with a WebLogic cluster

- Create the cluster and make sure it is accessible through the load balancer.

Note:

- If WebLogic is used with JRockit JRE on a Linux system, copy the content of `<WEBLOGIC_HOME>/endorsed` directory to `<JAVA_HOME>/jre/lib/endorsed`. For more information about WebLogic JRE configuration, see Oracle documentation.
- If WebLogic is used with JRockit JRE, the server must be started with `-XstrictFP` parameter (to enable strict floating point arithmetics globally for all methods in all classes).

Database

Before installing IBM SPSS Collaboration and Deployment Services Repository, a database must be running and accessible. A connection to the database is required in order to establish the necessary control tables and infrastructure.

The database and the IBM SPSS Collaboration and Deployment Services Repository do not need to be installed on the same server, but some configuration information is necessary to ensure connectivity. During the installation, you will be prompted for the database server name, port number, user name and password, and the name of the database to use for information storage and retrieval.

Important: You must manually create the database before installation. Any valid database name can be used, but if a previously created database does not exist, the installation will not continue.

Database permissions

The following table identifies the general database permissions that are required for a user to install, apply fixes to, update, and run IBM SPSS Collaboration and Deployment Services Repository:

Table 2. User permissions for repository maintenance tasks

Permission	Installation, Fix Pack Application, Migration	Run Time
Alter any schema	Required	Optional
Create function	Required	Optional
Create procedure	Required	Optional
Create table	Required	Optional
Create view	Required	Optional
Create XML schema collection	Required	Optional
Connect	Required	Required
Delete	Required	Required
Execute	Required	Required
Insert	Required	Required
References	Required	Required
Select	Required	Required
Update	Required	Required

For example, when you install the repository, you need all of the permissions in the table. After installation, many of the permissions can be removed before you start and run the repository. To apply a fix pack, those permissions need to be reinstated.

The exact names of these permissions vary depending on the database, and other permissions might be needed. The following examples illustrate the permissions for specific database systems.

Example: DB2 9.7 for Linux, Windows, and UNIX

- BINDADD
- CONNECT
- CREATETAB
- CREATE_EXTERNAL_ROUTINE
- CREATE_NOT_FENCED_ROUTINE
- DATAACCESS
- EXPLAIN
- IMPLICIT_SCHEMA
- DBADM

Note: DBADM provides explicit create schema privilege that is needed for configuring IBM SPSS Collaboration and Deployment Services Repository.

Example: Microsoft SQL Server 2008

- ALTER ANY SCHEMA
- CONNECT
- CREATE FUNCTION
- CREATE PROCEDURE
- CREATE TABLE
- CREATE VIEW

- CREATE XML SCHEMA COLLECTION
- DELETE
- EXECUTE
- INSERT
- REFERENCES
- SELECT
- UPDATE

Example: Oracle 11gR2

The following permissions are required for configuring IBM SPSS Collaboration and Deployment Services Repository with Oracle 11gR2 database:

- CREATE SESSION
- ALTER SESSION
- CREATE TYPE
- CREATE TABLE
- CREATE PROCEDURE
- CREATE VIEW
- CREATE TRIGGER

The following permissions are required for starting IBM SPSS Collaboration and Deployment Services Repository with Oracle 11gR2 database:

- CREATE SESSION
- ALTER SESSION

DB2

DB2 for Linux, UNIX, and Windows

When using DB2 for Linux, UNIX, and Windows database, the default database creation parameters are not sufficient. The following additional parameters must be specified:

- UTF-8 code set
- 8 KB page sized buffer pool (in the sample script *CDS8K*) for the tables that are wider than 4 KB
- 8 KB table space using the 8 KB buffer pool
- 32 KB buffer pool (*CDSTEMP* in the sample script)
- 32 KB temporary table space for any wide result sets using the 32 KB buffer pool

An example script for creating a database named *SPSSCDS* follows. If you copy and paste the script, make sure it matches exactly the SQL as shown. Note that the script references a UNIX-style database file path which must be modified if the script is to be run on Windows. In the software downloads, the script is included as part of the documentation package.

```
CREATE DATABASE SPSSCDS ON /home/cdsuser USING CODESET UTF-8 TERRITORY US COLLATE USING SYSTEM;
CONNECT TO SPSSCDS;
CREATE Bufferpool CDS8K IMMEDIATE SIZE 250 AUTOMATIC PAGESIZE 8 K;
CREATE REGULAR TABLESPACE CDS8K PAGESIZE 8 K MANAGED BY AUTOMATIC STORAGE EXTENTSIZE 8
OVERHEAD 10.5 PREFETCHSIZE 8 TRANSFERRATE 0.14 BUFFERPOOL CDS8K DROPPED TABLE RECOVERY ON;
COMMENT ON TABLESPACE CDS8K IS '';
CREATE Bufferpool CDSTEMP IMMEDIATE SIZE 250 PAGESIZE 32 K;
CREATE SYSTEM TEMPORARY TABLESPACE CDSTEMP PAGESIZE 32 K MANAGED BY AUTOMATIC STORAGE
EXTENTSIZE 16 OVERHEAD 10.5 PREFETCHSIZE 16 TRANSFERRATE 0.14 BUFFERPOOL "CDSTEMP";
COMMENT ON TABLESPACE CDSTEMP IS '';
CONNECT RESET;
```

DB2 on z/OS

- When using DB2 z/OS database, you must ensure that DB2 zOS subsystem is enabled for Java, Stored Procedure, Function and XML.
- To enable XQuery support, PTF UK73139 or later must be applied.

JMS message store table configuration

When IBM SPSS Collaboration and Deployment Services Repository is installed with a WebSphere Application Server, the default WebSphere JMS provider, Service Integration Bus (SIB), is configured to use the repository database as the JMS message store. When the repository is started, it will automatically create the required JMS tables in the database if they do not already exist.

When using WebSphere on z/OS with DB2, you must manually create the JMS message store tables. To create WebSphere JMS message store tables on z/OS with DB2, use WebSphere *sibDDLGenerator* command to generate the DDL and then apply the DDL to the database to create the tables. For more information about *sibDDLGenerator*, see WebSphere documentation.

Additional considerations

When running DB2 on dedicated hardware, it is recommended that DB2 Configuration Advisor be used for database Performance Management. Increasing the values of the following parameters may improve performance:

- **IBMDEFAULTBP.** The buffer pool size should be set according to the available memory and with regard to other applications running on the system.
- **NUM_IOCLEANERS.** The number of asynchronous page cleaners must at least equal the number of processors on the system.
- **NUM_IOSERVERS.** Increasing the number of I/O servers optimizes prefetching.
- **LOCKLIST.** Increasing the amount of storage for the lock list helps avoid timeouts and deadlocks during write operations.
- **MAXLOCKS.** The percentage of the *LOCKLIST* that must be filled before the database manager performs an escalation.

If DB2 is run on a shared system, changing these values must be done with consideration of available system resources, and DB2 self-tuning functionality should be considered as an alternative for managing the database performance.

Microsoft SQL Server

When using Microsoft SQL Server database:

- The *DBO* schema must be used.
- A SQL Server user is required for configuring database access. Windows-based authentication is not supported.
- IP addresses must be enabled for the Internet Protocol network protocol.
- Appropriate options must be used for processing non-Latin character sets. For example, it is recommended to use the Kana-sensitive (*_KS*) option to distinguish between Hiragana and Katakana Japanese characters. For more information about database collation, refer to Microsoft SQL Server documentation.
- The selected database collation must be case-insensitive (*_CI*).
- Snapshot isolation must be enabled for Microsoft SQL Server database. The following is a example of statements to activate snapshot isolation:

```

USE MASTER
GO
ALTER DATABASE <database_name> SET ALLOW_SNAPSHOT_ISOLATION ON
GO
ALTER DATABASE <database_name> SET READ_COMMITTED_SNAPSHOT ON
GO

```

Oracle Initialization parameters

When you use an Oracle database with IBM SPSS Collaboration and Deployment Services, the following parameters and configurations must be followed. Changes are made to the `init.ora` and `spfile.ora` parameter files.

Table 3. Oracle database Parameters.

Parameter	Setting
OPEN_CURSORS	300
NLS_CHARACTERSET	AL32UTF8
NLS_NCHAR_CHARACTERSET	AL16UTF16

Note: Set both NLS_CHARACTERSET and NLS_NCHAR_CHARACTERSET when you create the Oracle instance.

Tip: To address case sensitivity of user login values, use parameters such as NLS_LANG, NLS_COMP, or NLS_SORT for your Oracle instance. See the Oracle documentation to determine which parameter best addresses your needs.

Oracle XDB

For an Oracle database, Oracle XDB (XML database feature) must be installed. You can verify that by querying for schema (user account) **XDB** (SELECT * FROM ALL_USERS), or by verifying that **RESOURCE_VIEW** exists (DESCRIBE RESOURCE_VIEW). The Oracle principal that is used with IBM SPSS Collaboration and Deployment Services Repository must be granted the **XDBADMIN** role.

Repository database maintenance

It is strongly recommended that IBM SPSS Collaboration and Deployment Services Repository database maintenance tasks be performed at regular intervals.

Table 4. Repository database maintenance schedule

Task	Recommended schedule
Backup	Daily
Update statistics	Daily
Consistency check	Weekly
Reorganize	Weekly
Rebuild	Monthly

Installation and configuration

Use the following checklist to guide you through installation with a stand-alone application server:

- Install the application files on the host system using IBM Installation Manager.
- Configure IBM SPSS Collaboration and Deployment Services Repository to be used with the application server and the database.

While the steps described for stand-alone server are also applicable to clustered installation, installing on a cluster topology requires additional steps. See the topic “Cluster configuration” on page 24 for more information.

Installation

IBM SPSS Collaboration and Deployment Services Repository application files are installed on the host system with IBM Installation Manager. Installation files can be downloaded from IBM Passport Advantage.

1. Log on to the operating system as a user with appropriate level of permissions. See the topic “User and file system permissions” on page 11 for more information.
2. Launch IBM Installation Manager:

GUI mode:

```
<IBM Installation Manager installation directory>/eclipse/IBMIM
```

Command line mode:

```
<IBM Installation Manager installation directory>/eclipse/tools/imcl -c
```

3. If the installation repository is not configured, specify the repository path, for example, as a location on the host file system, the network, or an HTTP address.

Note: To successfully access an installation repository, the repository location path must not contain an ampersand (&).

4. On the main menu, select **Install**.
5. Select IBM SPSS Collaboration and Deployment Services as the package to be installed.

Note: You can also select adapters or components to be installed with the IBM SPSS Collaboration and Deployment Services server, such as the IBM SPSS Collaboration and Deployment Services Scoring Adapter for PMML, provided those adapters or components are available in the installation repositories.

6. Read the license agreement and accept its terms.
7. Specify the package group and the installation directory.
 - A new package group is required for IBM SPSS Collaboration and Deployment Services Repository install.
 - Specify the installation directory for shared resources. You can specify the shared resources directory only the first time that you install a package.
8. Select features to be installed.
9. Review summary information and proceed with the installation. The application files will be installed in the specified directory. Further configuration is necessary. See the topic “Configuration” for more information. If you are running IBM Installation Manager in GUI mode, the option to start the configuration utility will be presented on the last panel.

If problems occur during the installation, you can troubleshoot them using IBM Installation Manager logs. The log files can be accessed from the main menu of IBM Installation Manager.

To automate IBM SPSS Collaboration and Deployment Services installation, IBM Installation Manager can be run in the silent mode. For more information, see the IBM Installation Manager documentation: <http://www-01.ibm.com/support/knowledgecenter/SSDV2W/welcome>.

Configuration

IBM SPSS Collaboration and Deployment Services Repository configuration utility performs the following tasks:

- Creates database objects for the content repository

- Creates application server resources, for example, JMS queues, and deploys Java programs into the application server
- Configures encryption and security

While configuration with a stand-alone application server is the last required installation step, additional steps will be required in a clustered environment. See the topic “Cluster configuration” on page 24 for more information.

Before configuration

1. Verify that the application server is installed and working. If you are performing an automatic configuration (configuration that creates the artifacts and deploys them to the application server) the application server must be in the following state:
 - **WebSphere stand-alone:** Server must be stopped.
 - **WebSphere managed:** Managed server must be stopped, Deployment Manager server must be running.
 - **WebSphere cluster:** Cluster members must be stopped, Deployment Manager server must be running.
 - **JBoss:** Server must be stopped.
 - **WebLogic stand-alone:** Server must be stopped.
 - **WebLogic managed:** Managed server must be stopped, WebLogic administration server must be running.
 - **WebLogic cluster:** Cluster members must be stopped, WebLogic administration server must be running.
2. Verify that the database is accessible.
3. If reusing an existing repository database with WebSphere, delete the SIB (JMS message store tables).

To run the configuration utility

1. Log on to the operating system as the same user that installed IBM SPSS Collaboration and Deployment Services Repository.
2. Launch the configuration utility:
 - GUI mode - Windows
`<repository installation directory>\bin\configTool.bat`
 - GUI mode - UNIX and Linux
`<repository installation directory>/bin/configTool.sh`
 - Command line mode - Windows
`<repository installation directory>\bin\cliConfigTool.bat`
 - Command line mode - UNIX and Linux
`<repository installation directory>/bin/cliConfigTool.sh`

Note: The utility can also be automatically launched as an option at the end of the installation step. See the topic “Installation” on page 19 for more information.

3. Select the application server type.
4. Specify the application server settings:
 - WebSphere
 - **WebSphere Profile Root** The directory location of the profile of the WebSphere server. Note that for a managed server or cluster, it is the path of the deployment manager profile. Other WebSphere settings, such as WebSphere installation root, profile topology (for stand-alone server), server, and node, will be automatically populated based on profile information. If the values cannot be populated automatically, you must specify them manually.
 - **WebSphere Install Root** The directory location where WebSphere server is installed.

- **Server topology** WebSphere profile topology: Stand-alone, managed, or cluster. You must select a topology if the deployment manager profile contains both managed servers and clusters.
 - **URL Prefix** For clustered installation, the URL of the load balancer or proxy server for routing server-initiated requests.
 - **WebSphere Server or Cluster** WebSphere server or cluster name.
 - **WebSphere Node** For a managed WebSphere server, the name of the node where the target server is located.
 - **WebSphere user name and password** Only if administrative security is enabled.
 - JBoss
 - **Server Directory Path** The directory location where JBoss is installed.
 - **JBoss Server** JBoss server name. Specify a value of `standalone`.
 - **JVM** Directory location of the JBoss JVM.
 - **URL Prefix** The URL for routing server-initiated requests. The default URL prefix for JBoss is `http://127.0.0.1:8080`, unless server properties, such as bind address or port, have been modified. Note that `localhost` is not allowed as part of the URL prefix. The prefix value must be externally resolvable if external clients will connect to the IBM SPSS Collaboration and Deployment Services Repository.
 - WebLogic
 - **WebLogic Domain Root Directory** The directory location of the WebLogic domain. Other WebLogic settings, such as server directory path, domain topology, server or cluster name, and the path to WebLogic JVM, will be automatically populated based on the domain information. If the values cannot be populated automatically, you must specify them manually.
 - **Server Directory Path** The directory location where WebLogic server is installed.
 - **Domain topology** WebLogic domain topology: single server or cluster.
 - **URL Prefix** For clustered installation, the URL of the load balancer or proxy server for routing server-initiated requests.
 - **WebLogic Server or Cluster** The name of WebLogic server or cluster.
 - **Path to WebLogic JVM** Directory location of WebLogic JVM.
 - **WebLogic user name and password.**
5. Specify database connection information:
 - **Database type** IBM DB2, SQL Server, or Oracle.
 - **Host** The host name or address of the database server.
 - **Port** The access port for the database server.
 - **Database name** The name of the database to be used for content repository.
 - **SID/Service Name** For Oracle, SID or service name
 - **Run as service** For Oracle, indicates that the connection is to a database service rather than by SID.
 - **User name** Database user name.
 - **Password** Database user password.
 6. If reusing a database from a prior installation, specify whether existing data should be preserved or discarded.
 7. Specify the options for the encryption keystore. The keystore is an encrypted file that contains the key for decrypting the passwords used by the repository, such as the repository administration password, the database access password, etc.
 - To reuse a keystore from an existing repository installation, specify the path and password to the keystore. The key from the old keystore will be extracted and used in the new keystore. Note that the JRE used to run the application server must be compatible with the JRE that was used to create the encryption keys.

- If you are not reusing an existing keystore, specify and confirm the password to the new keystore. The keystore will be created in `<repository installation directory>/keystore`.

Important: If the keystore file is lost, the application will not be able to decrypt any passwords and will become unusable. It will subsequently have to be reinstalled. Therefore, it is recommended that backup copies of the keystore file be maintained.

8. Specify the password value to be used for the built-in repository administrator user account (*admin*). The password will be used when logging in to the repository for the first time.
9. Select deployment mode (automatic or manual):
 - Automatic deployment will create application server resources and deploy the application files.
 - Manual deployment will generate the application file and installation scripts in the `toDeploy/<timestamp>` output directory. These artifacts can later be used to manually deploy the repository. Manual configuration is intended for advanced users when more control of the application server environment is required.
10. Review summary information and proceed with configuration.
 - If configuration reports success, you can proceed with post-installation steps, such as starting the repository and verifying connectivity. See the topic “Post-installation” on page 28 for more information.
 - If you have chosen the manual deployment mode, you can proceed to the manual steps. See the topic “Manual deployment” for more information.
 - If you are installing the repository with an application server cluster, you can proceed to configuring the other cluster nodes. See the topic “Cluster configuration” on page 24 for more information.

Note: The configuration operation can take 15-30 minutes or longer to complete, depending on your hardware, network speed, the complexity of your application server topology, etc. If it appears that configuration process is not responding or if a failure is reported, examine the log files in the `<IBM SPSS Collaboration and Deployment Services Repository installation directory>/log`.

Silent configuration

IBM SPSS Collaboration and Deployment Services Repository configuration can be automated by running the utility in silent mode with input from a properties file. The template for the properties file is available in `<repository home>/setup/resources/properties/config.properties`. When the configuration utility is run in interactive mode, it creates `<repository home>/platform/engineConfig.properties`.

To run the configuration utility in silent mode:

```
<repository installation home>/bin/engine.bat|.sh -config <config properties file path>
```

To re-run the configuration utility in silent mode with previously created default properties files, for example, after fixing the problems that caused the initial configuration to fail:

```
<repository installation home>/bin/engine.bat|.sh -rerun
```

You can change the logging level for silent configuration by using the `-antLogLevel` `<VERBOSE|DEBUG|INFO|WARN|ERROR>` parameter.

Manual deployment

Manual configuration is intended for advanced users when more control of the application server environment is required. When the configuration utility is run with the manual deployment mode selected, it makes necessary changes to the database, but your application server is not changed. Deployable application files, installation scripts, and properties files are generated in the `<repository installation directory>/toDeploy/<timestamp>` directory. These artifacts can be used to deploy IBM SPSS Collaboration and Deployment Services Repository.

Important: If you are planning to install the adapters for IBM SPSS products into IBM SPSS Collaboration and Deployment Services Repository, the adapters must be installed before manual deployment. If adapters are installed after the repository has been manually deployed, you must first undeploy the repository artifacts from the application server. After that, you can install the adapters, and then redeploy the repository using the following procedures for each application server type. For information about undeploying the repository, see “Uninstalling” on page 32.

To manually deploy on WebSphere

1. Perform IBM SPSS Collaboration and Deployment Services Repository installation. During the configuration step, select the manual option on the application server information panel. See the topic “Configuration” on page 19 for more information.
 - The `<repository installation directory>/toDeploy/<timestamp>` directory will contain the files for the WebSphere server configuration and application deployment. The `CrtCDSresources.py` script creates the application server resources, such as JDBC providers, data sources, and messaging engine. The `DeployCDS.py` script deploys the applications flags.

2. Verify that the application server is in the following state:

- **WebSphere stand-alone:** Stopped.
- **WebSphere managed/cluster:** Managed server/cluster members must be stopped, Deployment Manager server must be running.

3. Execute the scripts in the `<repository installation directory>/toDeploy/<time stamp>` directory.

If you are manually deploying to a stand-alone WebSphere server, `-connType NONE` option must be used:

Windows

```
<WAS profile root>/bin/wsadmin -lang jython -connType NONE
-wsadmin_classpath <repository installation directory>/setup/lib/crypto-server.jar
-f CrtCDSResources.py
```

```
<WAS profile root>/bin/wsadmin -lang jython -connType NONE -f DeployCDS.py
```

UNIX

```
<WAS profile root>/bin/wsadmin.sh -lang jython -connType NONE
-wsadmin_classpath <repository installation directory>/setup/lib/crypto-server.jar
-f CrtCDSResources.py
```

```
<WAS profile root>/bin/wsadmin.sh -lang jython -connType NONE -f DeployCDS.py
```

If administration security is enabled for the WebSphere server, you also need to include the administrator user ID and password parameters:

Windows

```
<WAS profile root>/bin/wsadmin -lang jython -user <admin_user> -password <admin_password>
-wsadmin_classpath <repository installation directory>/setup/lib/crypto-server.jar
-f CrtCDSresources.py
```

```
<WAS profile root>/bin/wsadmin -lang jython -user <admin_user> -password <admin_password>
-f DeployCDS.py
```

UNIX

```
<WAS profile root>/bin/wsadmin.sh -lang jython -user <admin_user> -password <admin_password>
-wsadmin_classpath <repository installation directory>/setup/lib/crypto-server.jar
-f CrtCDSresources.py
```

```
<WAS profile root>/bin/wsadmin.sh -lang jython -user <admin_user> -password <admin_password>
-f DeployCDS.py
```

4. Start the server.

For a cluster, complete the required steps for all cluster members. See the topic “WebSphere cluster” on page 25 for more information.

To manually deploy on JBoss

1. Perform IBM SPSS Collaboration and Deployment Services Repository installation. During the configuration step, select the manual option on the application server information panel. See the topic “Configuration” on page 19 for more information.
 - The `<repository installation directory>/toDeploy/<timestamp>` directory will contain the files for the JBoss server configuration and application deployment. `CrtCDSresources.bat` or `CrtCDSresources.sh` script creates the application server resources, such as JDBC providers, data sources, messaging engine, etc. `DeployCDS.bat` or `DeployCDS.sh` deploys the applications flags.
2. Verify that the application server is stopped.
3. Execute the scripts in the `<repository installation directory>/toDeploy/<timestamp>` directory.
Windows
`CrtCDSresources.bat`
`DeployCDS.bat`
UNIX
`CrtCDSresources.sh`
`DeployCDS.sh`
4. Start the server.

To manually deploy the repository on WebLogic

1. Perform IBM SPSS Collaboration and Deployment Services Repository installation. During the configuration step, select the manual option on the application server information panel. See the topic “Configuration” on page 19 for more information.
 - The `<repository installation directory>/toDeploy/current` directory will contain the files for the WebLogic server configuration and application deployment. `DeployCDS.bat` or `DeployCDS.sh` creates the application server resources, such as JDBC providers, data sources, messaging engine, etc., and deploys the applications files.
- a. Verify that the application server is in the following state:
 - **stand-alone WebLogic:** Started.
 - **managed/cluster WebLogic:** Managed server/cluster members must be stopped, administration server must be running.
2. Execute the following commands from the `<repository installation directory>/toDeploy/current` directory:
Windows
`deploy.bat -user <weblogic_user> -password <weblogic_password> -resources -deploy`
UNIX
`deploy.sh user <weblogic_user> -password <weblogic_password> -resources -deploy`
3. Update the WebLogic server startup script to include a call to script setting the environment variables. These files can be found in the `<repository installation directory>/toDeploy/current` directory and also the `<WebLogic domain>/bin` directory.
Windows
`setCDSEnv.cmd`
UNIX
`setCDSEnv.sh`
4. Start the server.
For a cluster, complete the required steps for all cluster members. See the topic “WebLogic cluster” on page 26 for more information.

Cluster configuration

IBM SPSS Collaboration and Deployment Services Repository can be deployed into an environment of clustered application servers. Each application server in the cluster should have the identical configuration for the hosted application components and the repository is accessed through a hardware

or software-based load balancer. This architecture allows processing to be distributed among multiple applications servers and it also provides redundancy in case of a single server failure.

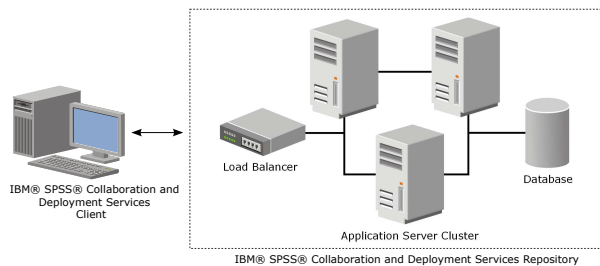


Figure 2. Clustered deployment architecture

The process of installing the repository into a cluster includes the following steps:

- Initial installation and configuration of application components on the management node of the cluster.
- Subsequent configuration of cluster nodes.

IBM SPSS Collaboration and Deployment Services Repository currently supports clustering WebSphere and WebLogic application servers. Follow the application server-specific instructions to complete the deployment.

Installation prerequisites

- Host system requirements must be met on all nodes of the cluster.
- All members of IBM SPSS Collaboration and Deployment Services Repository cluster must run on the same operating system as the main (management) node.
- The repository database must already exist and be accessible
- The application server topology must already exist before installing IBM SPSS Collaboration and Deployment Services Repository. It is recommended that you verify that the cluster is accessible and running properly at the load balancer address.
- The IBM SPSS Collaboration and Deployment Services Repository installation directory must be shared across all nodes in the cluster.

WebSphere cluster

1. Make sure all prerequisites have been met.
2. Perform the installation and configuration. You can choose to deploy the application either automatically or manually. See the topic “Installation and configuration” on page 18 for more information.
3. Configure the installation directory to be shared so that it is accessible to all members of the cluster.
4. Set the value of the **CDS_HOME** variable for each node.
 - Open the administrative console
 - Open the **Environment > WebSphere variables** section.

- For each node in the cluster, there will be a **CDS_HOME** variable defined. Verify that the value contains the appropriate path to the shared installation directory.
5. Set the value of the **log4j.configuration** Java system property for each cluster member. This property identifies the location at which the logging system can access the logging configuration file. Typically, this property has a value of: `file:///${CDS_HOME}\platform\log4j.properties`.
 - Open the administrative console
 - For each server in the cluster, review the **log4j.configuration** value. This value is available at **Application servers > server-name > Process definition > Java Virtual Machine > Custom properties**, where *server-name* corresponds to the particular server.
 - On the Windows operating system, if the **CDS_HOME** variable from step 4 on page 25 contains a drive letter, add a forward slash ("/") escape character to the **log4j.configuration** value. For example, the new value would be `file:///${CDS_HOME}\platform\log4j.properties`.
 6. Save and synchronize your changes.
 7. Make sure the IBM SPSS Collaboration and Deployment Services Repository URL Prefix configuration property value is set correctly to the URL of the load balancer. See the topic "Load balancer configuration" on page 27 for more information.
 8. Start the cluster.

WebLogic cluster

1. Make sure all prerequisites have been met.
2. Perform the installation and configuration. You can choose to deploy the application either automatically or manually. See the topic "Installation and configuration" on page 18 for more information.
3. Configure the installation directory to be shared so that it is accessible to all members of in the cluster.
4. To ensure JMS failover, configure the JMS Server to a migratable target:
 - For automatic migration, WebLogic requires a data source with a specific table. The IBM SPSS Collaboration and Deployment Services Repository database can be used for this purpose, but the table must be created manually. Navigate to `<WebLogic server directory>/server/db` and select the subfolder that corresponds with the database vendor you are using with the repository. The database-specific SQL to create the table WebLogic needs can be found in the file *leasing.ddl*, for example, `<WebLogic server directory>/server/db/db2/leasing.ddl`. Notice the default table name is *ACTIVE*. Use the database vendor tools to create the table in the repository database.
 - Using WebLogic administration console, Under **Environment > Cluster > Configuration > Migration**, set Migration Basis to *Database* and Data Source for Automatic Migration to *CDS_DataSource*. This is the data source for the repository and should already be created and targeted to the cluster.
 - Under **Environment > Migratable Targets**, set Service Migration Policy to *Auto-Migrate Exactly-Once Services*. This will cause the JMS services to automatically be moved to a different server if one should fail. Changes to the migratable target may require the servers to be restarted.
 - Under **Services > Persistent Stores > PlatformStore > Configuration**, modify the Target setting to refer to the migratable target configured in the previous step. If you receive an error message about PlatformJMSServer not being targeted to the same target, it can be ignored.
 - Under **Services > Messaging > JMS Servers > PlatformJMSServer**, modify the Target setting to refer to the migratable target configured in the previous step.
5. Update the WebLogic server startup script to include a call to the *setCDSEnv.sh* or *setCDSEnv.cmd* script to set up the environment variables. Note that when repository adapters are installed, the script file is updated with new settings. The simplest way to ensure all servers have the latest settings is to refer directly to the script file in the `<repository installation directory>/toDeploy/current` directory using the shared network path.
6. Make sure the IBM SPSS Collaboration and Deployment Services Repository URL Prefix configuration property value is set correctly to the URL of the load balancer. See the topic "Load balancer configuration" on page 27 for more information.

7. Start the cluster.

Load balancer configuration

A software or hardware-based load balancer must be configured for accessing the repository in a clustered environment.

Both WebLogic and WebSphere application servers provide built-in software-based load-balancer utilities, for example, WebLogic Apache plug-in and IBM HTTP Server.

Important: Session affinity must be enabled for any load balancer used with IBM SPSS Collaboration and Deployment Services cluster. For more information, see load balancer vendor documentation.

Setting the URL prefix property

In a cluster environment, *URL_Prefix* repository configuration property value, used for routing server-initiated HTTP requests, must be set to the URL of the load balancer. Note that this property can be initially set when the IBM SPSS Collaboration and Deployment Services Repository configuration utility is run. See the topic “Configuration” on page 19 for more information.

To set/update the value of URL prefix property after repository configuration:

- Start a single cluster member.
- Open the browser-based IBM SPSS Deployment Manager by navigating to *http://<repository host>:<port number>/security/login*.
- Update the *URL_Prefix* configuration property with the URL of the load balancer for the cluster and save your changes.
- Stop the running cluster member.
- Start the cluster.

Expanding the cluster

In enterprise environments with large processing loads, it may be necessary to expand the cluster running IBM SPSS Collaboration and Deployment Services Repository by adding nodes after the initial installation.

WebSphere

1. Create additional WebSphere managed profiles and federate them to the cell. Create servers and add them to the cluster using the WebSphere console.
2. Execute the *CrtCDSresources.py* script in the */toDeploy/* directory to update the new node(s) that have been defined for the cell.

```
/bin/wsadmin -lang jython -f CrtCDSresources.py -update
```
3. Set the value of the *CDS_HOME* variable for each node. See the topic “WebSphere cluster” on page 25 for more information.
4. Restart the cluster.

WebLogic

1. Create additional WebLogic servers and add them to the cluster using WebLogic console.
2. Update the WebLogic server startup script to include a call to the *setCDSEnv.sh* or *setCDSEnv.cmd* script to set up the environment variables. Note that when repository adapters are installed, the script file is updated with new settings. The simplest way to ensure all servers have the latest settings is to refer directly to the script file in the *<repository installation directory>/toDeploy/current* directory using the shared network path.
3. Restart the server that was added to the cluster.

Post-installation

Use the following checklist to guide you through post-installation steps:

- Start the server and verify the connectivity. If necessary, configure server autostart.
- Install any content adapter for using IBM SPSS Collaboration and Deployment Services Repository with other IBM SPSS products such as IBM SPSS Statistics and IBM SPSS Modeler.
- If necessary, enable component installation by connecting to IBM SPSS Collaboration and Deployment Services Repository with a Web browser. For more information, see “Web installations from the repository” on page 32.
- If necessary, install IBM SPSS Collaboration and Deployment Services Remote Process Server and IBM SPSS Collaboration and Deployment Services - Essentials for Python. For more information, see *IBM SPSS Collaboration and Deployment Services Remote Process Server 8 Installation Instructions* and *IBM SPSS Collaboration and Deployment Services - Essentials for Python 8 Installation Instructions*.
- If necessary, change the master database password.
- If necessary, install additional JDBC drivers.
- Install IBM SPSS Collaboration and Deployment Services clients and IBM SPSS Deployment Manager. For more information, see client application installation instructions.
- Using Deployment Manager, create repository users and group and assign application permissions through roles. For more information, see *IBM SPSS Collaboration and Deployment Services 8 Administrator's Guide*.

If problems occur during post-installation steps, see *IBM SPSS Collaboration and Deployment Services 8 Troubleshooting Guide*.

Starting the repository server

The repository server can run either on a console or in the background.

Running on a console allows viewing of processing messages and can be useful for diagnosing unexpected behavior. However, the repository server typically runs in the background, handling requests from clients such as IBM SPSS Modeler or the IBM SPSS Deployment Manager.

Note: Running other applications simultaneously may reduce system performance and startup speed.

On the Windows platform, running on a console corresponds to running in a command window. Running in the background corresponds to running as a Windows service. In contrast, on a UNIX platform, running on a console corresponds to running in a shell, and running in the background corresponds to running as a daemon.

Important: To avoid permissions conflicts, the repository server must always be started under the same credentials, preferably a user with sudo (UNIX) or administrator-level (Windows) privileges.

The repository server is started by starting the application server. This can be accomplished with the scripts provided with the repository server installation or native application server administration tools. For more information, see the application server vendor documentation.

WebSphere

Use WebSphere administration tools. For more information, see WebSphere documentation.

JBoss

Use the following scripts with the repository server installation:

```
<repository installation directory>/bin/startserver.bat
```


<repository installation directory>/bin/startserver.sh

Alternatively, you can also use JBoss administration tools to start the server. For more information, see JBoss documentation.

WebLogic

For single WebLogic server configurations, use the following scripts provided with the repository server installation:

<repository installation directory>/bin/startserver.bat

<repository installation directory>/bin/startserver.sh

The WebLogic application server can also be started using your preferred mechanism, but you must ensure the correct environment variables and Java properties are set. To assist with this process, the configuration process creates the following scripts in the *toDeploy/current* directory:

- *setCDSEnv.cmd* or *setCDSEnv.sh*
- *startCDSWebLogic.cmd* or *startCDSWebLogic.sh*
- *startManagedCDSWebLogic.cmd* or *startManagedCDSWebLogic.sh*

If you selected automatic deployment during the configuration, the files are also copied to the domain and <domain>/bin directory. Inspect these files to determine which environment and Java properties must be set. The specific properties will vary depending on installed IBM SPSS adapters. If you are starting your server using a startup script, you can call *setCDSEnv.cmd/setCDSEnv.sh* from that script. If you are using node manager or some other mechanism to start the server, make sure to define the equivalent settings.

Verifying connectivity

You can verify that IBM SPSS Collaboration and Deployment Services Repository is running by accessing browser-based IBM SPSS Deployment Manager using one of the following supported Web browsers:

- Internet Explorer 10
- Internet Explorer 9
- Internet Explorer 8
- Firefox 10 ESR
- Safari 5
- Safari 4

To access browser-based IBM SPSS Deployment Manager

1. Navigate to the login page at *http://<repository host>:<port number>/security/login*.
2. Specify the administrator login credentials. The credentials are established during repository configuration.

Managing the database password

The database password provided during IBM SPSS Collaboration and Deployment Services Repository configuration is stored as part of the data source definition in the application server settings. Additional steps may be required to ensure the database password security.

Testing the database connection

The IBM SPSS Collaboration and Deployment Services Repository database connection can be tested using the data source management facilities in the application server administrative console.

Application server	Data source object name
WebSphere	CDS_DataSource
JBoss	jdbc/spss/PlatformDS
WebLogic	CDS_DataSource

JAAS object security

The credentials for IBM SPSS Collaboration and Deployment Services data source created in the application server are persisted as a JAAS object.

Important: When the repository is configured on WebSphere or WebLogic application server using either the automatic deployment (with the configuration utility) or manual deployment with scripts generated by the configuration utility, the password is passed to the application server as clear text and then persisted according to the application server settings. Although the default WebSphere and WebLogic settings provide for storing passwords in encrypted form, it may be necessary to verify that the password is not stored as clear text. See application server documentation for additional information about password security.

Changing the database password

For security reasons, it may be necessary to change the database password following IBM SPSS Collaboration and Deployment Services Repository installation. In such cases, the stored database password can be changed by using IBM SPSS Collaboration and Deployment Services Password Utility.

Note:

- If WebLogic application server is used with the repository, the password must be changed in IBM SPSS Collaboration and Deployment Services before it is changed in the database.

To run the password utility:

1. Execute

Windows:

```
<repository installation directory>/bin/cliUpdateDBPassword.bat
```

UNIX:

```
<repository installation directory>/bin/cliUpdateDBPassword.sh
```

System i:

```
<repository installation directory>/bin/cliUpdateDBPassword.qsh
```

2. Specify and confirm the new password using the command prompt.

The password can also be changed by modifying the application server settings. Note that the password is stored in encrypted form, therefore the new password can be converted to an encrypted string by running `cliEncrypt.bat/cliEncrypt.sh` with the password as command line argument. When you use WebLogic console to change the password, WebLogic will automatically encrypt it.

JDBC drivers

Adding driver support to IBM SPSS Collaboration and Deployment Services Repository

IBM SPSS Collaboration and Deployment Services includes a set of IBM Corp. JDBC drivers for all major database systems: IBM DB2, Microsoft SQL Server, and Oracle. These JDBC drivers are installed by default with the repository.

If IBM SPSS Collaboration and Deployment Services does not include a driver for a needed database, you can update your environment to include a third-party driver for the database. Third party drivers can be used by augmenting your repository installation with the driver files.

Depending on the application server, the directory location of the JDBC drivers is as follows:

- WebSphere: <WebSphere installation directory>/lib/ext
- Oracle WebLogic: <repository installation directory>/<domain name>/lib

For JBoss, you need to install the JDBC driver as a JBoss core module and register the module as global. For details, see the JBoss documentation.

Note that for Netezza, the version 5.0 driver should be used to access both version 4.5 and 5.0 databases.

Adding driver support to client applications

To add a JDBC driver to the IBM SPSS Deployment Manager:

1. Close the client application if it is running.
2. Create a folder named JDBC at the root level of the client installation directory.
3. Place the driver files in the JDBC folder

After adding the driver files to your environment, the driver can be used in a data source definition. In the JDBC Name and URL dialog box, type the name and URL for the driver. Consult the vendor documentation for the driver to obtain the correct class name and URL format.

IBM SPSS products compatibility

IBM SPSS Collaboration and Deployment Services Repository functionality can be extended to support other IBM SPSS applications by installing additional content adapter packages.

For current compatibility information, refer to the software product compatibility reports on the IBM Technical Support site at: <http://publib.boulder.ibm.com/infocenter/prodguid/v1r0/clarity/softwareReqsForProduct.html>

Note:

- For some products, patches may need to be applied. Check with IBM Corp. support to determine that correct patch level.
- You must verify that the installation and runtime requirements for IBM SPSS applications (for example, application servers and databases) are compatible with the requirements for IBM SPSS Collaboration and Deployment Services Repository. For detailed information, consult Software product compatibility reports and the documentation for individual IBM SPSS products.

IBM SPSS Statistics client and IBM SPSS Modeler client are not required for use of IBM SPSS Collaboration and Deployment Services. However, these applications offer interfaces for using the IBM SPSS Collaboration and Deployment Services Repository to store and retrieve objects. The server versions of these products are required for jobs containing IBM SPSS Statistics or IBM SPSS Modeler objects to be executed.

By default, the repository is installed without adapters for other IBM SPSS products and users must install the adapter packages corresponding to their versions of products. The packages are included on the products' distribution media.

Note that you should avoid storing IBM SPSS product objects in the repository until you first install the required adapter packages. If you do so, the object will not be a recognized type even after installing the adapter packages and you will need to delete the objects and add them to the repository again. For

example, if an IBM SPSS Modeler stream is stored in the repository before the IBM SPSS Modeler adapter is installed, the MIME type will not be known and will instead be set to a generic type, resulting in an unusable stream file.

Web installations from the repository

An optional Web installation module allows you to install IBM SPSS Deployment Manager by connecting to the IBM SPSS Collaboration and Deployment Services Repository server using your browser.

In order to enable the Web installations, the `DeploymentManagerWebInstall.ear` file must be deployed into the application server running IBM SPSS Collaboration and Deployment Services Repository.

The EAR file can be downloaded from IBM Passport Advantage portal.

Uninstalling

In the event that an installation is no longer required, the current version can be uninstalled.

To uninstall the repository:

1. Stop the repository.
2. If the Manual option was used when configuring the repository, undeploy the repository resources from the application server:
 - WebSphere stand-alone server

```
<WAS profile root>/bin/wsadmin -lang jython -connType none -f
<repository installation directory>/toDeploy/<time stamp>/delCDS.py
```
 - WebSphere managed server or cluster

```
<WAS profile root>/bin/wsadmin -lang jython -f
<repository installation directory>/toDeploy/<time stamp>/delCDS.py
```
 - JBoss

```
<repository installation directory>/setup/ant/bin/ant -lib "<repository installation directory>/setup/lib"
-Dinstall.dir="<repository installation directory>" -Doutput.dir="."
-f <repository installation directory>/setup/resources/scripts/JBoss/delete-resources.xml
```
 - WebLogic
 - ```
<repository installation directory>/toDeploy/current/deploy[.sh]
-user <user ID> -password <password> -undeploy
```
3. To delete all data in the repository database, open `<repository installation directory>/uninstall/uninstall.properties` configuration file and set the `cds.uninstall.remove.user.data` property to true. Note that some data may still remain in the database after IBM Installation Manager uninstall is run, and it must be deleted manually.

**Important:** Do not perform this step if you plan on using the repository again for new installs, or need to preserve the audit or logging data. You should also consider using the database vendor tools to create a database backup before using this option.

4. Run IBM Installation Manager (GUI or command line), select the option to uninstall IBM SPSS Collaboration and Deployment Services, and follow the prompts. IBM Installation Manager can also be run in the silent mode. For more information, see the IBM Installation Manager documentation: <http://www-01.ibm.com/support/knowledgecenter/SSDV2W/welcome>.
5. Manually delete the root installation directory for the repository.

**Important:** If you intend to reuse repository data, it is recommended to save the keystore file, which can be found in `<repository installation directory>/keystore`.

---

## Chapter 4. Migration

IBM SPSS Collaboration and Deployment Services Repository migration preserves the contents configuration settings of an existing repository including the following:

- Repository files and folder structure
- Scheduling and notification components
- Notification templates
- Local users
- Locally defined overrides of remote directory user lists and groups
- Role definitions and membership
- User preferences
- Icons

The following migration scenarios are supported:

- Migration from an earlier version of the repository.
- Migration to a different host, application server, or database server.

The following paths can be used for migration:

- Installation with a copy of the repository database. This is the recommended way to migrate.
- Installation of the repository with an existing repository database.

Before selecting a migration path, review this entire chapter, including the information on additional migration considerations.

Regardless of the selected migration path, you must follow these guidelines:

- IBM SPSS Collaboration and Deployment Services Repository application files must be installed in a different location from the original installation. Do not overwrite the files in the original location.
- A new application server instance must be created. Do not reuse the profile (WebSphere), server (JBoss), or domain (WebLogic) already used to run the old instance of the repository.
- Migration process does not preserve repository package configuration, so any additional packages for IBM SPSS products such as IBM SPSS Modeler and IBM SPSS Statistics must be reinstalled. The packages in the target instance must be at the same level or higher than the packages in the source repository; and they should reference the DB table for that. The packages must be at a level that is compatible with the given target version of IBM SPSS Collaboration and Deployment Services. See the topic “IBM SPSS products compatibility” on page 31 for more information.

**Note:** The packages in the target instance must be at the same version level or higher than the packages in the source instance. The information about installed packages and their versions can be found in the SPSSSETUP\_PLUGINS table of the source instance database.

For IBM SPSS Collaboration and Deployment Services 8, migration from version 7 is supported.

---

### Installing with a copy of the repository database

Using a copy of an existing repository database allows the existing instance to remain online until the new installation is ready to go live.

This procedure is for migration with a copy of the repository database where the source and target databases are the same, for example, DB2 to DB2. For information about switching database systems, see “Migrating to a different database”

- Make a copy of the existing repository database. The database copy can be performed using the database vendor or third-party tools.
- Run IBM SPSS Collaboration and Deployment Services configuration utility and point it to the new copy of the repository database. Make sure that the Preserve Existing Data option is selected to retain all existing data.
- Reinstall additional packages.

---

## Installing with an existing repository database

You can also upgrade to IBM SPSS Collaboration and Deployment Services Repository by installing the system with an existing repository database.

- Stop the repository.
- Backup the existing repository database.
- Install IBM SPSS Collaboration and Deployment Services and run the configuration utility. Make sure that the Preserve Existing Data option is selected to retain all existing data.
- Reinstall additional packages.

---

## Migrating to a different database

Migrating to a different database can include moving to a different database vendor (for example, SQL Server to IBM DB2 or Oracle to DB2), or migrating to a database on a different operating system (for example from DB2 for i to DB2 for Linux, UNIX, and Windows).

Transferring repository objects to a different vendor's database can be accomplished by creating a copy of the old database in the new database.

- Create the target database following the instructions provided with the release of IBM SPSS Collaboration and Deployment Services you are migrating from.
- Use the database vendor tools to move the data from the source repository database to the target repository database. The database should already be configured, so it is only necessary to move the data in the IBM SPSS Collaboration and Deployment Services tables. See the database vendor documentation for more information.
- Make a copy of the keystore file that is used by the source repository database.
- Install IBM SPSS Collaboration and Deployment Services and run the configuration utility.
  - Specify the target database as the repository database
  - Make sure the Preserve Existing Data option is selected to retain all existing data
  - When prompted for the keystore, select the copy of the keystore file to be used for the new instance.
- Reinstall any additional packages.

Note that because of differences between database environments and vendor copy tools, such as DB2 backup, MS-SQL Server backup, or Oracle RMAN, you must verify during migration that the following database features are supported by the tool you have selected:

- XML tables (*SPSSDMRESPONSE\_LOG* and *SPSSSCORE\_LOG*)
- Binary data/BLOB, CLOB
- Special date formats

For example, Oracle 11g Data Pump does not support XML tables. Therefore, it can be used for restoring all repository tables except the two XML tables. The XML tables can be migrated using Oracle Export.

Review all database vendor requirements, like XML schema registration in MS SQL Server and Oracle. It is recommended to consult IBM Corp. support before database migration.

---

## Additional migration considerations

Depending on your setup, additional tasks may be required for a successful migration of the following:

- Passwords
- JMS data store
- Notification templates

When planning the migration, note that some of these tasks may need to be performed before the configuration utility is run with an existing database or a database copy.

## Migrating passwords

When migrating to a new IBM SPSS Collaboration and Deployment Services instance, it is best to use a Java environment from the same vendor and with the same bit size (32-bit or 64-bit) as the original installation. This is because the passwords that are stored in the repository are encrypted based on a keystore key that is provided by the Java runtime. A different Java bit size or vendor implementation will have a different keystore key which will not be able to decrypt the passwords correctly. In some cases, it is necessary to change Java vendors or bit size (for example, when moving from WebLogic to WebSphere).

If Java encryption used while installing the repository over an existing database is different from the encryption used by the original instance (for example, IBM Java encryption versus Sun Java encryption), credentials passwords will not be migrated and the configuration utility will report failure. However, the repository can be still started, and you can use IBM SPSS Deployment Manager to manually change credentials passwords. The export/import utility will migrate passwords, but when reusing an existing database, the export must be performed from the source installation before importing the credential resources to the target installation.

If you need to use a different Java environment, you can replace the passwords in credential resource definitions and IBM SPSS Modeler job steps after IBM SPSS Collaboration and Deployment Services Repository configuration:

- Export the jobs and credential resource definitions from the source repository instance and import them into the target repository using IBM SPSS Deployment Manager.

or

- Manually update each password in job steps and each credential in the target repository using IBM SPSS Deployment Manager.

## JMS store migration on WebSphere

When IBM SPSS Collaboration and Deployment Services Repository is installed with a WebSphere Application Server, the default WebSphere JMS provider, Service Integration Bus (SIB), is configured to use the repository database as the JMS message store. When the repository is started, it will automatically create the required JMS tables in the database if they do not already exist. Note that when using WebSphere on z/OS with DB2, you must manually create the JMS message store tables.

When using database copy to migrate the content of a repository to a new instance running on WebSphere, you must delete the JMS message store tables (the tables with the names starting with SIB\*) from the database before you start IBM SPSS Collaboration and Deployment Services. The tables will then be automatically created, with the exception of WebSphere on z/OS.

To manually create WebSphere JMS message store tables on z/OS with DB2, use WebSphere *sibDDLGenerator* command to generate the DDL and then apply the DDL to the database to create the tables. For more information about *sibDDLGenerator*, see WebSphere documentation.

## **JMS store migration on WebLogic**

Special considerations apply when migrating the JMS message store of IBM SPSS Collaboration and Deployment Services Repository installed with WebLogic.

When using database copy to migrate the content of a repository to a new instance running on WebLogic, you must delete the contents of the JMS message store table *SPSSWLStore* from the database before you start IBM SPSS Collaboration and Deployment Services.

## **Migrating notification templates**

To preserve the customizations made to notifications templates in an existing repository, you must copy the templates from *<repository installation directory>/components/notification/templates* to the same directory of the new installation, after the new installation has been initially configured. For more information about notifications templates, see *IBM SPSS Collaboration and Deployment Services Repository 8 Administrator's Guide*.



---

## Chapter 5. Package management

Updates, optional components, and content adaptors for IBM SPSS products are installed into the IBM SPSS Collaboration and Deployment Services Repository server as packages with IBM Installation Manager.

For details, see the installation instructions for individual components.

You can also use IBM SPSS Collaboration and Deployment Services Package Manager utility for troubleshooting IBM SPSS Collaboration and Deployment Services package configuration and installing additional components, for example, custom content adaptors and security providers.

---

### Installing packages

IBM SPSS Collaboration and Deployment Services Package Manager is a command line application. It can also be called in batch mode by other applications to install their package files into the repository.

If IBM SPSS Collaboration and Deployment Services Repository was initially deployed automatically, during package installation the application server must be in the following state:

- WebSphere: For a stand-alone server, the server must be stopped. For a managed server, the server must be stopped, while the Deployment Manager node must be running. For a cluster, all cluster members must be stopped with the Deployment Manager node running.
- JBoss: Stopped.
- WebLogic: For a stand-alone server, the server must be stopped. For a managed server or clusters, the WebLogic administration server must be running and the target server/cluster stopped.

**Important:** If the repository was initially manually deployed, the deployment must be manually updated after running IBM SPSS Collaboration and Deployment Services Package Manager. See the topic “Manual deployment” on page 22 for more information. The resources that are manually created do not change when running package manager, so it is not necessary to update them.

The user must have administrator-level privileges to be able to install packages.

To prevent the newer version of a package from being overwritten by an older version, package manager performs a version check. Package manager also checks for prerequisite components to ensure that they are installed and their versions are equal to or newer than the required version. It is possible to override the checks, for example, to install an older version of the package.

**Note:** Dependency checks cannot be overridden if package manager is called in batch mode.

#### To install a package

1. Navigate to `<repository installation directory>/bin/`.
2. Depending on the operating system, execute `cliPackageManager.bat` on Windows or `cliPackageManager.sh` on UNIX.
3. When prompted, enter the user name and password.
4. Type the install command and press Enter. The command must include the `install` option and the path of the package in quotes, as in the following example:

```
install 'C:\dir one\package1.package'
```

To install multiple packages at the same time, enter multiple package names separated by a space, for example:

```
install 'C:\dir one\package1.package' 'C:\dir one\package2.package'
```

An alternative way to install multiple packages is to use the `-dir` or `-d` parameter with the path of a directory containing the packages to install

```
install -dir 'C:\cds_packages'
```

In the case of failed dependencies or version checks, you will be brought back to the main package manager prompt. To install ignoring non-fatal failures, rerun the install command using the `-ignore` or `-i` parameter.

5. When the installation is completed, use `exit` command to exit package manager.

To display more command line install options, type `help` and press Enter key. The options include:

- `info "<package path>":` Display information for a specified package file.
- `install "<package path>":` Install the specified package files into the repository.
- `tree:` Display installed package tree information.

## Silent mode

To automate package installation, IBM SPSS Collaboration and Deployment Services Package Manager can be run in silent mode:

```
<repository installation directory>/bin/cliPackageManager[.sh]
-user <administrator> -pass <administrator password>
install <package path> [<additional_package_path>]
```

## Logging

IBM SPSS Collaboration and Deployment Services Package Manager logs (main and Ant log) can be found in `<repository installation directory>/log`.

---

## Chapter 6. Single sign-on

IBM SPSS Collaboration and Deployment Services provides single sign-on capability by initially authenticating users through an external directory service based on the *Kerberos* security protocol, and subsequently using the credentials in all IBM SPSS Collaboration and Deployment Services applications (for example, IBM SPSS Deployment Manager, IBM SPSS Collaboration and Deployment Services Deployment Portal, or a portal server) without additional authentication.

**Note:** Single sign-on is not allowed for browser-based IBM SPSS Deployment Manager.

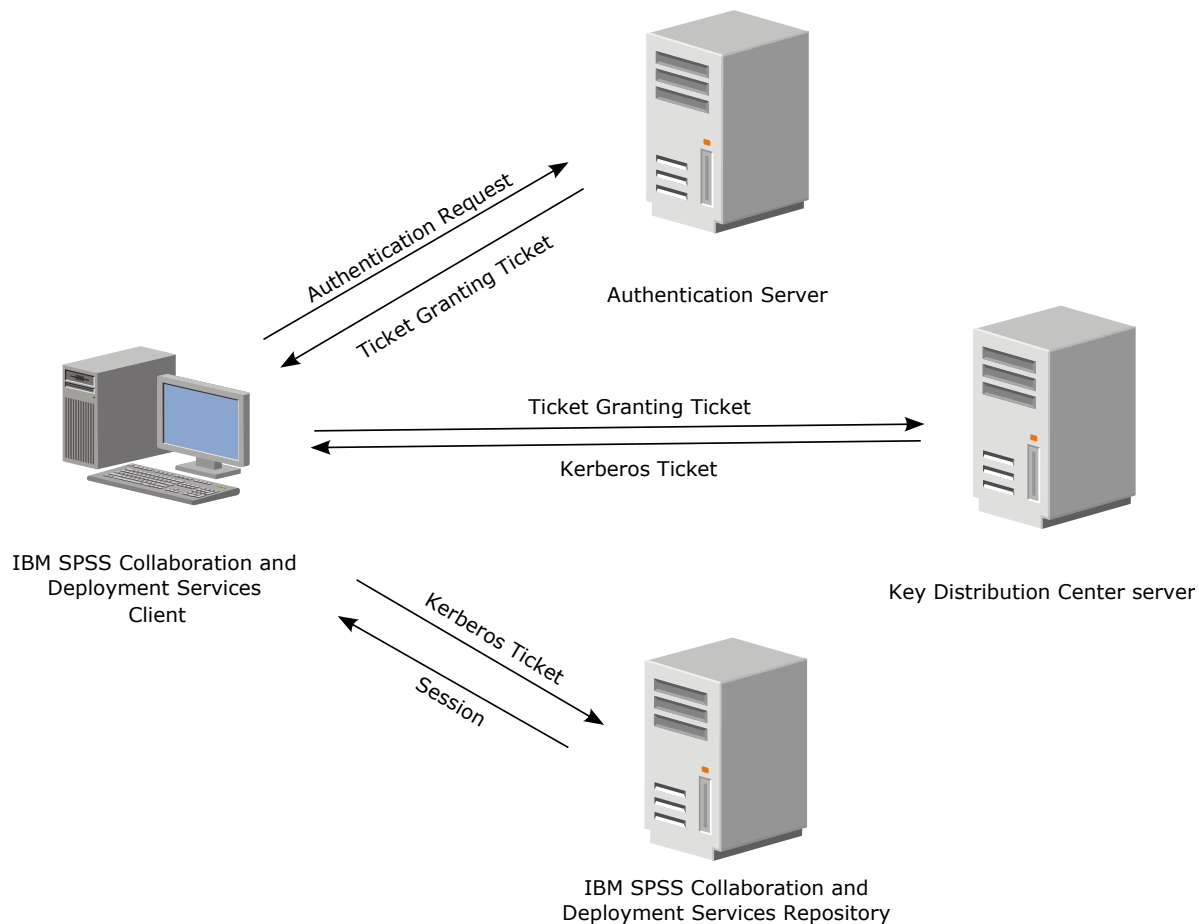


Figure 3. IBM SPSS Collaboration and Deployment Services SSO architecture

For example, when IBM SPSS Collaboration and Deployment Services is used in conjunction with Windows Active directory, you must configure the *Kerberos Key Distribution Center (KDC)* service to enable single sign-on. The service will supply session tickets and temporary session keys to users and computers within an Active Directory domain. The KDC must run on each domain controller as part of Active Directory Domain Services (AD DS). When single sign-on is enabled, IBM SPSS Collaboration and Deployment Services applications log into a Kerberos domain and use Kerberos tokens for web services authentication. If single sign-on is enabled, it is strongly recommended that SSL communication be configured for the repository.

Desktop client applications, such as Deployment Manager, create a Java subject and then establishes a GSS session with the repository using the subject context. The repository returns a Kerberos service ticket

to the client when the GSS context is established. Thin client applications, such as Deployment Portal, also obtains a Kerberos service ticket from the repository. However, thin clients first perform HTTP-based cross-platform authentication via the Negotiate Protocol. Both desktop and thin client applications require that you first log on to a Kerberos domain, for example, to your Microsoft Active Directory/Windows domain.

Single sign-on configuration in IBM SPSS Collaboration and Deployment Services includes the following steps:

- Directory system setup.
- Configuring the directory system as an IBM SPSS Collaboration and Deployment Services *security provider* using the Server Administration tab of IBM SPSS Deployment Manager. For more information, see IBM SPSS Collaboration and Deployment Services administrator documentation.
- Kerberos Key Distribution Center server configuration. Credential delegation must be enabled for the Kerberos Service Principal on the Kerberos Key Distribution Center server. The procedure for enabling credential delegation will be different depending on your directory server and Kerberos environment.
- Configuring Kerberos Key Distribution Center server as an IBM SPSS Collaboration and Deployment Services single sign-on provider using the Server Administration tab of IBM SPSS Deployment Manager. For more information, see IBM SPSS Collaboration and Deployment Services administrator documentation.
- Configuring the application server for single sign-on.
- For Windows client systems, the registry must be updated for Kerberos LSA access.
- Depending on the application server used with the repository, it may be necessary to update the application server configuration.
- Windows client systems must have HKEY\_LOCAL\_MACHINE\System\CurrentControlSet\Control\Lsa\Kerberos\ registry value updated. See the topic “Updating Windows registry for single sign-on” on page 44 for more information.
- For thin-client access to the repository (for example, with IBM SPSS Collaboration and Deployment Services Deployment Portal), the Web browser must have Simple and Protected GSS-API Negotiation (SPNEGO) enabled.

Additional configuration steps are also required to enable the repository Server Process Credential. See the topic “Server Process Credential configuration” on page 46 for more information.

---

## Directory configuration for single sign-on

IBM SPSS Collaboration and Deployment Services single sign-on requires an external directory to be set up. Directory authentication for IBM SPSS Collaboration and Deployment Services single sign-on can be based on the following directory systems:

- OpenLDAP directory
- Microsoft Active Directory

### OpenLDAP

The overall configuration includes the following steps:

- Configuring OpenLDAP security provider. For more information, see *IBM SPSS Collaboration and Deployment Services 8 Administrator's Guide*.
- Kerberos server-specific changes to OpenLDAP configuration depending on the Kerberos server being used.

### OpenLDAP with Windows Kerberos Server

If OpenLDAP directory is used with Windows Kerberos server, where OpenLDAP is the IBM SPSS Collaboration and Deployment Services security provider and Windows Kerberos server is the single

sign-on provider, you must make sure that your OpenLDAP schema matches your Active Directory schema. If the schema does not match, you must change the user mapping on the OpenLDAP server.

## MIT Kerberos Server

If MIT Kerberos Server is used with OpenLDAP, it may be necessary to set up SSL on the OpenLDAP server and client to ensure secure communication when the KDC service and LDAP server are on different host. Consult release-specific MIT Kerberos Server documentation for updated information.

## Active Directory

The following instructions are for Windows Server 2003 domain controller. The steps will be similar for Windows Server 2008 systems.

1. Create a user profile that will be used as Kerberos service principal
2. Map this user profile to the IBM SPSS Collaboration and Deployment Services host system
3. Configure the encryption type and Kerberos credential delegation
4. Create a Kerberos keytab file and place it on IBM SPSS Collaboration and Deployment Services host system

After these steps have been completed, you can use Deployment Manager to configure Active Directory as a security provider, and then configure a Kerberos single sign-on provider.

### To create a user profile for Kerberos principal

1. Using the Active Directory users and computers management console, create a domain user for the selected domain (for example, user `krb5.principal` in domain `spss`). This user corresponds to the Kerberos service principal.
2. Specify a surname parameter for this user. It is required by some application servers.
3. Select the option for password to never expire.

### To map the user profile to the IBM SPSS Collaboration and Deployment Services host system

Associate the user profile with a Service Principal Name (SPN) by using the **setspn** tool. An SPN is a name that is used by a Kerberos client to identify a service on a Kerberos server. The client references the SPN instead of a specific domain user.

The **setspn** tool accesses, updates, and removes the SPN property for a user. To add an SPN, use the following command syntax:

```
setspn -A <spn> <user>
```

The **-A** option adds an arbitrary SPN to the domain account. The other arguments have the following definitions:

**<spn>** The SPN that is added to the user, having a format of `<service_class>/<host>`. The `<service_class>` value denotes the class of the service. The `<host>` value corresponds to the host name, either fully qualified or simplified.

**<user>** The user profile to associate with the SPN.

To map the user profile, perform the following steps. Add both the fully qualified host name and the simplified, shortened host name as a client may reference either name.

1. If you do not have the **setspn** tool, download and install an appropriate version of Windows Support Tools.
2. Run **setspn** with the IBM SPSS Collaboration and Deployment Services server fully qualified host name as the argument, as in the following example:

```
setspn -A HTTP/cdsserver.spss.com krb5.principal
```

3. Run **setspn** with the IBM SPSS Collaboration and Deployment Services server host name as the argument, as in the following example:

```
setspn -A HTTP/cdsserver krb5.principal
```

For more information on the **setspn** tool, see <http://technet.microsoft.com/en-us/library/cc731241.aspx>.

## To configure encryption type and credential delegation

1. On the Account tab of the user properties dialog, select the option to use AES encryption.
2. On the Delegation tab of the user properties dialog, select the option to trust the user with for delegation to any service.

## To create a Kerberos keytab file

A keytab file contains Kerberos principals with their corresponding encrypted keys and is used for principal authentication. To create a keytab file, use the **ktpass** tool. For information on the **ktpass** tool, see <http://technet.microsoft.com/en-us/library/cc753771.aspx>.

1. Run the **ktpass** tool as in the following example:

```
ktpass -out c:\temp\krb5.prin.keytab -princ HTTP/cdsserver.spss.com@SPSS.COM
-mapUser krb5.principal@SPSS.COM -mapOp set -pass Pass1234 -crypto AES256-SHA1 -ptype KRB5_NT_PRINCIPAL
```

- The value for the **princ** option must have the following format: `<service_provider_name>@<domain>`.
  - The value for the **mapUser** option must have the following format: `<Kerberos_service_principal>@<domain>`.
  - Any form of strong encryption, as defined by the **crypto** option, requires the JCE extension for strong encryption from Oracle.
2. Place the generated keytab file (in the example, `c:\temp\krb5.prin.keytab`) on the file system of your IBM SPSS Collaboration and Deployment Services host.

If the service password changes, the keytab file must also be updated.

---

## Kerberos server configuration

In Microsoft Windows environment, using the Active Directory Server with Windows (integrated) Kerberos Server is recommended. You must update all client machines' registry for Kerberos LSA access. You must also make specific changes to the browsers to use Kerberos. For non-Microsoft-Windows Kerberos servers, you may need to install additional software both on your repository host machine as well as on each client machines. In all cases, Kerberos service principal must be set to delegate credential. You must also make specific changes to each client machines for credential delegation.

---

## Application server configuration for single sign-on

Depending on the application server used with the repository, it may be necessary to update the application server settings.

## WebSphere

IBM SPSS Collaboration and Deployment Services configuration for single sign-on in WebSphere 7 and 8 includes the following steps:

- Defining Kerberos keytab.
- Defining JAAS-JGSS policy.

## Defining Kerberos keytab

1. In the administrative console, choose:

**Servers > Application Servers > <Server Name> > Server Infrastructure > Process Definition > Java Virtual Machine > Custom Properties**

2. Add custom property *KRB5\_KTNAME* with the value of the keytab file path.

## Defining JAAS-JGSS policy

1. In the administrative console, choose:  
**Security > Secure Administration, application and infrastructure > Java Authentication and Authorization Service > Applications logins**
2. Define a property *JGSSServer*.
3. In Additional Properties for *JGSSServer*, define the module class *com.ibm.security.auth.module.Krb5LoginModule* with authentication strategy **REQUIRED**.
4. Define the following custom properties for *com.ibm.security.auth.module.Krb5LoginModule*.

| Property name    | Value                                                                   |
|------------------|-------------------------------------------------------------------------|
| credsType        | both                                                                    |
| principal        | <principal name>, for example, <i>HTTP/cdssserver.spss.com@SPSS.COM</i> |
| useDefaultKeytab | true                                                                    |

## JBoss

For JBoss application server, at least one JAAS (Java Authentication and Authorization Service) configuration for JGSSServer must be provided. The template for single sign-on application policy can be found in the JGSSServer element of *<JBoss installation directory>/server/<deploy-dir>/conf/login-config.xml*. It may be necessary to change Kerberos login module name to correspond to the application server JRE.

At a minimum, at least one JAAS configuration for JGSSServer must be provided with the following parameters:

- **JGSSServer** required
  - **KerberosLocalUser** optional
  - **JDBC\_DRIVER\_01** optional
1. For Sun JRE, the following default JGSSServer configuration is created:

```
JGSSServer {
 com.sun.security.auth.module.Krb5LoginModule required
 storeKey="true"
 doNotPrompt="true"
 realm=<realm name>
 useKeyTab="true"
 principal=<name>
 keyTab=<path>
 debug=false;
};
```

2. Optional KerberosLocalUser configuration is used to allow NTLM bypass. This configuration allows the user to create a Kerberos credential when client browser sends a NTLM token (instead of a Kerberos token) during the negotiation challenge. Note that on Windows system, browsers on the same machine, where IBM SPSS Collaboration and Deployment Services server is installed, will always send NTLM token. All NTLM requests to IBM SPSS Collaboration and Deployment Services may be disabled by omitting this configuration from their JAAS configuration file.

For IBM JRE:

```
KerberosLocalUser {
 com.ibm.security.auth.module.Krb5LoginModule required
 useDefaultCcache=true
 debug=false;
};
```

For Sun JRE:

```
KerberosLocalUser {
 com.sun.security.auth.module.Krb5LoginModule required
 useTicketCache="true"
 debug=false;
};
```

- Optional JDBC\_DRIVER\_01 configuration is used for Kerberos authentication to database servers.

For IBM JRE:

```
JDBC_DRIVER_01 {
 com.ibm.security.auth.module.Krb5LoginModule required
 useDefaultCcache=true
 debug=false;
};
```

For Sun JRE:

```
JDBC_DRIVER_01 {
 com.sun.security.auth.module.Krb5LoginModule required
 useTicketCache="true"
 debug=false;
};
```

- It is also possible to specify appropriate login module class name, requirement type, and other options that the login module requires for each JAAS configuration. The login module class must be in class path. For more information, see JRE and application server vendor documentation.

## WebLogic

If you are running WebLogic 12c using JDK7, additional configuration is needed.

- Create a JAAS configuration file, `jaas.conf`, on the server machine. The content should be similar to the following:

```
JGSSServer {
 com.sun.security.auth.module.Krb5LoginModule required
 useKeyTab=true
 storeKey=true
 keyTab="C:/sso/winwlpriin.keytab"
 principal="HTTP/winwlsrv.mysso.com@MYSSO.COM"
 debug=true;
};
```

- Edit the file `C:\Oracle12c\Middleware\Oracle_Home\user_projects\d omain\C60B246\bin\setDomainEnv.cmd` to include the following Java property, replacing `<conf_path>` with the path for your configuration file:

```
-Djava.security .auth.login.config="<conf_path>/jaas.conf"
```

- When you configure single sign-on in IBM SPSS Deployment Manager, specify a Key table URL parameter of:

```
C:/sso/winwlpriin.keytab
```

**Note:** If you encounter Kerberos errors in your configuration, verify that the application server is using a recent JRE.

---

## Updating Windows registry for single sign-on

For SSO to function properly, the Kerberos Ticket-Granting Ticket (TGT) must include the session key. To enable this inclusion, the Windows registry must be updated. For more information, see <http://support.microsoft.com/kb/308339>.

IBM SPSS Collaboration and Deployment Services installation media include registry update files for configuring Windows XP SP2, Windows Vista, and Windows 2003 systems for Kerberos-based single sign-on. The files can be found in the `/Documentation/Utility_Files/Windows/registry` directory of the documentation package (downloaded from IBM Passport Advantage). The files are as follows:

- `/Server/Kerberos/Win2003_Kerberos.reg`
- `/Server/Kerberos/WinXPSP2_Kerberos.reg`



For Windows Vista and later systems, use the Win2003\_Kerberos.reg file.

The registry files allow the system administrator to push registry changes to all systems on the network that must have single sign-on access to the repository.

---

## Configuring one-way trust relationships

You can configure your environment for cross-realm authentication to control user access.

For example, suppose you have two domains, AppDomain and UserDomain. The two domains have a one-way trust relationship, with AppDomain configured for outgoing trust and UserDomain configured for incoming trust. You install the IBM SPSS Collaboration and Deployment Services server in the AppDomain domain and install IBM SPSS Deployment Manager in the UserDomain domain.

To configure IBM SPSS Collaboration and Deployment Services for one-way trust, you need to modify both the IBM SPSS Collaboration and Deployment Services server and IBM SPSS Deployment Manager.

### Configuring the IBM SPSS Collaboration and Deployment Services server

1. Stop the IBM SPSS Collaboration and Deployment Services server.
2. Create a valid krb5.conf Kerberos configuration file on the server file system. The file should have content similar to the following lines, with the domains replaced with values corresponding to your system:

```
[libdefaults]
default_realm = APPDOMAIN.COM

[realms]
APPDOMAIN.COM = {
 kdc = kdc.appdomain.com:88
 default_domain = appdomain.com
}
[domain_realm]
.appdomain.com = APPDOMAIN.COM
```

3. Set the Java system property java.security.krb5.conf to the location of the krb5.conf file. For example:

```
-Djava.security.krb5.conf="c:/windows/krb5.conf"
```

See your application server documentation for instructions on setting Java system properties.

4. Start the IBM SPSS Collaboration and Deployment Services server.

### Configuring IBM SPSS Deployment Manager

1. Close IBM SPSS Deployment Manager.
2. Create a valid krb5.ini Kerberos configuration file in the windows installation folder, such as c:\windows\krb5.ini. The file should have content valid for cross-realm authentication similar to the following lines, with the domains replaced with values corresponding to your system:

```
[libdefaults]
default_realm = USERDOMAIN.COM

[realms]
USERDOMAIN.COM = {
 kdc = kdc.userdomain.com:88
 default_domain = userdomain.com
}
APPDOMAIN.COM = {
 kdc = kdc.appdomain.com:88
 default_domain = appdomain.com
}
```

```
[domain_realm]
.userdomain.com = USERDOMAIN.COM
.appdomain.com = APPDOMAIN.COM
```

3. Start IBM SPSS Deployment Manager.

---

## Server Process Credential configuration

Server Process Credential is the built-in credentials definition of the user profile under which the repository server is run. In Active Directory or OpenLDAP-based single sign-on environment, Server Process Credential can be used instead of regular repository user credentials to:

- Run reporting job steps and schedule time-based jobs
- Query a security provider for a list of user and group profiles

For more information on using the Server Process Credential, see IBM SPSS Deployment Manager documentation.

After the repository has been configured for single sign-on, the following additional steps are required for enabling the Server Process Credential:

- Configure the middle tier user login configuration for the application server.
- Create the Kerberos ticket cache on the repository host.

To use the server process credential with reporting job steps:

- Add the data source database server to the domain/realm.
- Configure the data source database server to accept single sign-on connections from the domain/realm.
- Configure the data source database to provide the appropriate permissions to the Server Process Credential.

## To configure the middle tier user login on WebSphere

1. Using administrative console, open  
**Security > Global security > JAAS - Application logins**
2. Define login configuration *CaDSMiddleTier*.
3. For *CaDSMiddleTier*, define a JAAS module with class name *com.ibm.security.auth.module.Krb5LoginModule*.
4. For *com.ibm.security.auth.module.Krb5LoginModule*, define the following custom properties:
  - `useDefaultCache true`
  - `renewTGT true`
  - `debug false`

## To configure the middle tier user login on JBoss

Add the following application policy to `<JBoss installation directory>/server/<Server Name>/conf/login-config.xml`:

```
<application-policy name="CaDSMiddleTier">
 <authentication>
 <login-module code="com.sun.security.auth.module.Krb5LoginModule" flag="required">
 <module-option name="useTicketCache">true</module-option>
 <module-option name="realm">###DOMAIN#NAME###</module-option>
 <module-option name="kdc">###KDC#SERVER#HOST###</module-option>
 <module-option name="renewTGT">true</module-option>
 </login-module>
 </authentication>
</application-policy>
```

## To configure the middle tier user login on WebLogic

Add the following application policy to JAAS login configuration file (*jaas.conf*).

```
CaDSMiddleTier
{
 com.sun.security.auth.module.Krb5LoginModule required
 useTicketCache=true
 renewTGT=true
 debug=false;
};
```

If the file does not exist, it must be created and specified as the `-Djava.security.auth.login.config` startup argument for the WebLogic server.

## To create the Kerberos ticket cache

The Kerberos ticket cache will be used to store the Kerberos ticket used to authenticate the Server Process Credential. To create the ticket cache perform the following steps:

1. Update the Kerberos configuration file on the repository host server, for example `c:\windows\krb5.ini`. This file identifies the default realm/domain, default encoding types, renewable ticket, and KDC address, and will be used by the **kinit** application to generate our ticket cache. The following is an example of the Kerberos configuration file:

```
[libdefaults]
default_realm = ACSSO.COM
default_tkt_enctypes = rc4-hmac
default_tgs_enctypes = rc4-hmac
renewable = true

[realms]
ACSSO.COM = {
 kdc = acKDC.ACSSO.COM:88
 default_domain = ACSSO.COM
}
```

2. Login to the repository host using the domain credentials that will be used for the Server Process Credential. Make sure that these credentials have appropriate permissions on the host.
3. Run **kinit** from the directory of the JRE used by the repository application server with the options to create a renewable ticket and a ticket cache.

**Note:** On the Windows operating system, **kinit** may not create a renewable ticket. To overcome this problem, add the following registry setting:

```
\HKEY_LOCAL_MACHINE\SYSTEM\CurrentControlSet\Control\Lsa\Kerberos\Parameters\allowtgtsessionkey=0x01
(DWORD)
```

For more information, see the Kerberos documentation for your operating system.

4. Enter the password for the user for the Server Process Credential.

---

## Configuring browsers for single sign-on

To enable single sign-on for IBM SPSS Collaboration and Deployment Services Deployment Portal and other thin clients of IBM SPSS Collaboration and Deployment Services, you must configure your web browser to support Simple and Protected GSS-API Negotiation (SPNEGO) protocol.

### Microsoft Internet Explorer

For information on configuring Microsoft Internet Explorer to support SPNEGO, see <http://msdn.microsoft.com/en-us/library/ms995329.aspx>.

## Mozilla Firefox

SPNEGO support for Firefox is turned off by default. To enable it:

1. Go to the *about:config* URL (Firefox configuration file editor).
2. Change the following preference values:
  - **network.negotiate-auth.allow-non-fqdn** = false
  - **network.negotiate-auth.allow-proxies** = true
  - **network.negotiate-auth.delegation-uris** = Include the local intranet domain name, such as *.your-domain.com*, where the leading period represents a wildcard character
  - **network.negotiate-auth.trusted-uris** = Include the local intranet domain name, such as *.your-domain.com*, where the leading period represents a wildcard character
  - **network.negotiate-auth.using-native-gsslib** = true

## Google Chrome

SPNEGO support for Chrome is disabled by default. To enable it, you need to include the IBM SPSS Collaboration and Deployment Services server name in a whitelist:

- For Windows, define the `AuthNegotiateDelegateWhitelist` group policy. For more information, see the Chrome Policy List, Issue 472145, and Issue 469171.

As a member of the whitelist, the IBM SPSS Collaboration and Deployment Services server is treated as a trusted destination for Kerberos ticket forwarding.

## Safari

Single sign-on is not supported for Safari.

---

## Forwardable tickets and IBM SPSS Deployment Manager

Although not necessary, you could use the **kinit.exe** tool of your JDK to obtain and cache Kerberos ticket-granting tickets. For example, from the `jre\bin` directory of your IBM SPSS Deployment Manager installation, you could issue the following command:

```
kinit.exe -f
```

The `-f` option creates a forwardable ticket. This command creates a cache file in the Windows user directory where the JVM automatically searches for a cache.

If you have issued this command by using an IBM JDK 7 older than 170\_SR8, you may need to modify your `krb5.ini` file to access this cache successfully.

1. Open the `krb5.ini` file in a text editor. This file is often located in the `C:\Windows` directory.
2. In the **[libdefaults]**: section, add the following setting:

```
forwardable = true
```
3. Save the updated file.

This change is only needed for the client. No corresponding change is needed for the IBM SPSS Collaboration and Deployment Services Repository server.

---

## Chapter 7. Application context roots

The context root for an application defines the location at which the module can be accessed. The context root is part of the URL you use to connect to the application.

A URL reference to an IBM SPSS Collaboration and Deployment Services application includes the following elements:

### URL prefix

Consists of the protocol, the server name or IP address, and the port number

### Context root

Determines the location at which the application is accessed. By default, the context root is the server root itself, denoted as a single forward slash.

### Application root

Specifies the root of the application itself

For example, the IBM SPSS Collaboration and Deployment Services Deployment Portal has the following URL when the repository server is running locally on port 8080:

```
http://localhost:8080/peb
```

The URL prefix is `http://localhost:8080` and the context root is the application server root. The application root is `peb`.

There is nothing in the URL that identifies the web module as being part of IBM SPSS Collaboration and Deployment Services. If you add other applications to your server, managing the many modules available at the server root becomes increasingly difficult.

If you configure the repository server to use a context root, you can isolate the IBM SPSS Collaboration and Deployment Services components from other applications. For example, you can define a context root of `ibm/spss` for the IBM SPSS Collaboration and Deployment Services modules. In this case, the URL for the IBM SPSS Collaboration and Deployment Services Deployment Portal interface is:

```
http://localhost:8080/ibm/spss/peb
```

**Important:** If you use a context root for your repository server, all client applications must include the same context root when they connect to the server. The URL for any application running within the IBM SPSS Collaboration and Deployment Services environment, such as IBM Analytical Decision Management, must be updated accordingly.

---

## Configuring application context roots

You must update the system URL prefix and modify the individual context root specifications to configure context roots.

### Procedure

1. If the use of a URL prefix is enabled, add the context root to the URL prefix.
2. Update the context root for each application. The steps depend on the application server.
  - “Updating context roots for WebSphere” on page 50
  - “Updating context roots for JBoss” on page 51
  - “Updating context roots for WebLogic” on page 51

## Results

You can access the browser-based IBM SPSS Deployment Manager and the IBM SPSS Collaboration and Deployment Services Deployment Portal by using URL values that include your context root.

## What to do next

Update any references to the repository server, such as those defined using IBM SPSS Deployment Manager, to include the context root in the server URL.

## Adding a context root to the URL Prefix

If your system uses a custom URL prefix for accessing the IBM SPSS Collaboration and Deployment Services Repository, add the context root to the URL prefix specification.

### Before you begin

- Your login credentials must be associated with the Configuration action.
- Use of the URL Prefix setting must be enabled by using the browser-based IBM SPSS Deployment Manager.

### Procedure

1. Log in to the browser-based IBM SPSS Deployment Manager.
2. On the **Configuration** panel, click the **URL Prefix** option in the **Setup** group.
3. Add the context root to the **URL Prefix** definition. For example, if your URL prefix is `http://myserver:8080` and you want to use a context root of `ibm/spss`, the new value is `http://myserver:8080/ibm/spss`.

**Restriction:** Do not end the URL specification with a slash. For example, specify a value of `http://myserver:8080/myroot` instead of `http://myserver:8080/myroot/`.

4. Restart the application server.

## What to do next

Update the context root for each application. The steps depend on the application server.

## Updating context roots for WebSphere

Modify the location at which applications deployed on WebSphere are accessed by using the administrative console.

### Before you begin

“Adding a context root to the URL Prefix”

### Procedure

1. Log in to the WebSphere console.
2. Access the IBM SPSS Collaboration and Deployment Services application.
3. Update the **Context Root For Web Modules** settings to include your root value. If the URL prefix is enabled for your system, the root value for each module must be the same as the value you added to the URL Prefix. The application root must be unchanged. For example: `/IBM/SPSS/CDS/admin`
4. Restart the WebSphere nodes where IBM SPSS Collaboration and Deployment Services is deployed

## Updating context roots for JBoss

Modify the location at which applications deployed on JBoss are accessed by updating the ear file that contains the location definitions.

### Before you begin

“Adding a context root to the URL Prefix” on page 50

### Procedure

1. Make a backup copy of the cds80.ear file in the toDeploy/timestamp directory of your JBoss installation.
2. Use an archive utility to modify the META-INF/application.xml file in the original ear file. Prefix the application root value for each context-root element with the new context root. You must add the same value to each context-root element.
3. Copy the ear file that contains the updated application.xml file to the deploy directory of the application server.
4. Restart the application server.

### Example

Suppose the application.xml file contains the following specifications:

```
<module>
 <web>
 <web-uri>admin.war</web-uri>
 <context-root>admin</context-root>
 </web>
</module>
<module>
 <web>
 <web-uri>peb.war</web-uri>
 <context-root>peb</context-root>
 </web>
</module>
```

To add a context root of ibm/spss, update the context-root definitions with the following values:

```
<module>
 <web>
 <web-uri>admin.war</web-uri>
 <context-root>ibm/spss/admin</context-root>
 </web>
</module>
<module>
 <web>
 <web-uri>peb.war</web-uri>
 <context-root>ibm/spss/peb</context-root>
 </web>
</module>
```

## Updating context roots for WebLogic

Modify the location at which applications deployed on WebLogic are accessed by updating the ear file that contains the location definitions.

### Before you begin

“Adding a context root to the URL Prefix” on page 50

## Procedure

1. Make a backup copy of the `cds80.ear` file in the `toDeploy/current` directory of your WebLogic installation.
2. Use an archive utility to modify the `META-INF/application.xml` file in the original ear file. Prefix the application root value for each `context-root` element with the new context root. You must add the same value to each `context-root` element.
3. Use the WebLogic console to redeploy the ear file that contains the updated `application.xml` file.
4. Restart the application server.



---

## Chapter 8. FIPS 140–2 compliance

The Federal Information Processing Standard (FIPS) Publication 140-2, FIPS PUB 140-2, is a US government computer security standard used to accredit cryptographic modules. The document specifies the requirements for cryptography modules which include both hardware and software components, corresponding to four different levels of security that are mandated for organization that do business with the US government. IBM SPSS Collaboration and Deployment Services can be configured to provide Security Level 1 as specified by FIPS 140-2.

Security configuration for FIPS 140-2-compliance must follow these guidelines:

- Communications between the repository and client applications must use SSL for transport layer security of general data transfers. Additional AES encryption is provided for credential passwords using a shared key stored in the application code. See the topic Chapter 9, “Using SSL to secure data transfer,” on page 55 for more information.
- The repository server uses AES algorithm with the key stored in a keystore on the server file system to encrypt passwords in the configuration files, application server configuration files, security provider configuration files, etc.
- Communications between the repository server and the database server can optionally use SSL for transport layer security for general data transfer. AES encryption is provided for credential passwords, configuration passwords, user preference passwords, etc. using a shared key stored in a keystore on the database server file system.

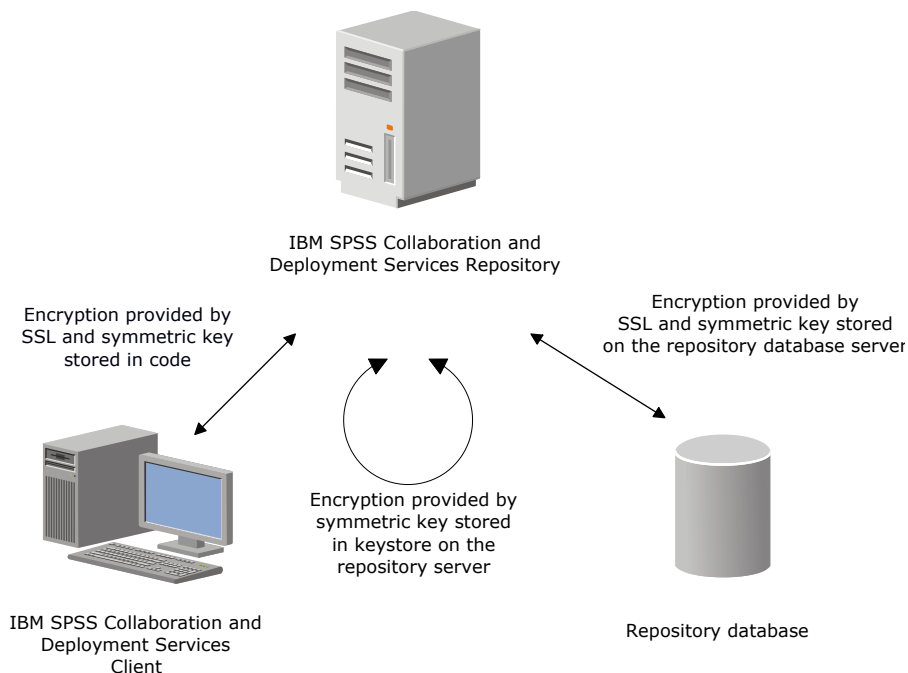


Figure 4. IBM SPSS Collaboration and Deployment Services FIPS 140-2-compliant security setup

---

### Repository configuration

The repository configuration for FIPS 140-2-compliance must follow these guidelines:

- The database must be set up to accept SSL communications; the JCE encryption module must also be configured.
- If the repository is installed on UNIX, the default JRE must be set up with a JCE module.
- The application server JRE must also be set up with a JCE module.
- The application server must be configured to accept SSL communications; a JCE module must also be configured.
- If the repository is installed on Windows, you must exit the installation at setup screen, configure a JCE module, then restart the setup and select to run in FIPS 140-2-compliant mode on the appropriate screen.
- If the repository is deployed into a clustered environment, keystore must be replicated to all nodes in the cluster.
- The JREs that are being used by IBM Corp. server applications interacting with IBM SPSS Collaboration and Deployment Services, such as IBM SPSS Statistics Server and IBM SPSS Modeler Server, must have SSL certificates installed.

---

## Desktop client configuration

For IBM SPSS Collaboration and Deployment Services desktop client applications, such as IBM SPSS Deployment Manager, JCE encryption module must be enabled for the JRE used to run the applications. The JRE must have SSL certificates installed.

---

## Browser configuration

- Mozilla Firefox can be configured to run in FIPS 140-2 compliant mode by modifying the application options. For more information, see .
- Internet Explorer configuration requires enabling Windows cryptography and modifying the browser settings. For more information, see .
- Apple Safari cannot be used in FIPS 140-2 compliant mode.

---

## Chapter 9. Using SSL to secure data transfer

Secure Sockets Layer (SSL) is a protocol for encrypting data transferred between two computers. SSL ensures that communication between the computers is secure. SSL can encrypt the authentication of a username/password and the contents of an exchange between a server and client.

---

### How SSL works

SSL relies on the server's public and private keys, in addition to a public key certificate that binds the server's identity to its public key.

1. When a client connects to a server, the client authenticates the server with the public key certificate.
2. The client then generates a random number, encrypts the number with the server's public key, and sends the encrypted message back to the server.
3. The server decrypts the random number with its private key.
4. From the random number, both the server and client create the session keys used for encrypting and decrypting subsequent information.

The public key certificate is typically signed by a certificate authority. Certificate authorities, such as VeriSign and Thawte, are organizations that issue, authenticate, and manage security credentials contained in the public key certificates. Essentially, the certificate authority confirms the identity of the server. The certificate authority usually charges a monetary fee for a certificate, but self-signed certificates can also be generated.

---

### Securing client/server and server-server communications with SSL

The main steps in securing client/server and server-server communications with SSL are:

1. Obtain and install the SSL certificate and keys.
2. If using encryption certificates with a strength greater than 2048 bits, install unlimited strength encryption on the Deployment Manager client computers. For more information, see "Installing unlimited strength encryption"
3. Add the certificate to the client keystore.
4. Instruct users to enable SSL when connecting to the server.

**Note:** Occasionally a server product acts as a client. An example is IBM SPSS Statistics Server connecting to the IBM SPSS Collaboration and Deployment Services Repository. In this case, IBM SPSS Statistics Server is the *client*.

### Installing unlimited strength encryption

The Java Runtime Environment shipped with the product has US export-strength encryption enabled. For enhanced security of your data, upgrading to unlimited-strength encryption is recommended.

#### IBM J9

1. Download the Java Cryptography Extension (JCE) Unlimited Strength Jurisdiction Policy Files for your version of the SDK from the IBM.com website.
2. Extract the unlimited jurisdiction policy files that are packaged in the compressed file. The compressed file contains a `US_export_policy.jar` file and a `local_policy.jar` file. In your WebSphere Application Server installation, go to the `$JAVA_HOME/jre/lib/security` directory and back up your `US_export_policy.jar` and `local_policy.jar` files.
3. Replace the existing copies of `US_export_policy.jar` and `local_policy.jar` files with the two files that you downloaded and extracted.

**Note:** You need to also install the \*.jar files to your <DeploymentManager\_Client\_Install>/jre/lib/security folder.

4. Enable security in the WebSphere Application Server administration console. Make sure that all node agents within the cell are active beforehand. For more information, see WebSphere documentation. Note that you must select an available realm definition from the list in **Security > Secure administration, applications, and infrastructure**, and then click **Set as current** so that security is enabled upon a server restart.
5. Log off the administrative console.
6. Stop the server.
7. Restart the server.

## Sun Java

1. Download the Java Cryptography Extension (JCE) Unlimited Strength Jurisdiction Policy Files for your version of the SDK from Sun Java website.
2. Extract the downloaded file.
3. Copy the two .jar files *local\_policy.jar* and *US\_export\_policy.jar* into <installation folder>/jre/lib/security, where <installation folder> is the folder in which you installed the product.

## Adding the certificate to client keystore (for connections to the repository)

**Note:** Skip this step if you are using a certificate that is signed by a certificate authority.

If you are using SSL to connect to an IBM SPSS Collaboration and Deployment Services repository and you are using self-signed certificates, you need to add the certificate to the client's Java keystore. The following steps are completed on the *client* computer.

1. Open a command prompt and change directories to the following location, where <product install dir> is the directory in which you installed the product:

```
<product install dir>/jre/bin
```

2. Enter the following command:

```
keytool -import -alias <alias name> -file <path to cert> -keystore <path to keystore>
```

where <alias name> is an arbitrary alias for the certificate, <path to cert> is the full path to the certificate, and <path to keystore> is the full path to the Java keystore, which may be <product install dir>/lib/security/jssecacerts or <product install dir>/lib/security/cacerts.

3. When prompted, enter the keystore password, which is changeit by default.
4. When prompted about trusting the certificate, enter yes.

## Importing the certificate file for browser-based client connections

When you connect to IBM SPSS Collaboration and Deployment Services Repository through SSL with a browser-based client, for example, IBM SPSS Collaboration and Deployment Services Deployment Portal, the browser either prompts you to accept the unsigned, untrusted certificate, or displays a message that the site is unsafe and provides a link to import the certificate into the browser truststore. This process is different for different browsers, and it might be different depending on the browser configuration. You can also manually install the certificate into the browser truststore.

## Instructing users to enable SSL

When users connect to the server through a client product, they need to enable SSL in the dialog box for connecting to the server. Be sure to tell your users to select the appropriate check box.

---

## URL prefix configuration

If IBM SPSS Collaboration and Deployment Services Repository is set up for SSL access, the value of the URL Prefix configuration setting must be modified as follows:

1. Log in to the repository using browser-based console.
2. Open *URL Prefix* configuration option.

**Configuration > Setup > URL Prefix**

3. Set the value of the prefix to https instead of http and set the port value to the SSL port number. For example:

```
[default]
http://<hostname>:<port>
[SSL-enabled]
https://<hostname>:<SSLport>
```

---

## Securing LDAP with SSL

Lightweight Directory Access Protocol (LDAP) is an Internet Engineering Task Force (IETF) standard for exchanging information between network directories and databases containing any level of information. For systems requiring additional security, LDAP providers, such as Microsoft's Active Directory, can operate over Secure Socket Layer (SSL), provided that the Web or application server supports LDAP over SSL. Using SSL in conjunction with LDAP can ensure that login passwords, application information, and other sensitive data are not hijacked, compromised, or stolen.

The following example illustrates how to enable LDAPS using Microsoft's Active Directory as a security provider. For more specific information on any of the steps or to find details that address a particular release of the security provider, see the original vendor documentation.

1. Verify that Active Directory and the Enterprise Certificate Authority are installed and functioning.
2. Use the certificate authority to generate a certificate, and import the certificate into the certificate store of the IBM SPSS Deployment Manager installation. This allows the LDAPS connection to be established between the IBM SPSS Collaboration and Deployment Services Repository and an Active Directory server.

To configure IBM SPSS Deployment Manager for secure Active Directory connections, verify that a connection exists to the repository.

3. Launch the IBM SPSS Deployment Manager.
4. From the **Tools** menu, choose **Server Administration**.
5. Log in to a previously defined administered server.
6. Double-click the **Configuration** icon for the server to expand the hierarchy.
7. Double-click the **Security Providers** icon to expand the hierarchy.
8. Double-click the Active Directory security provider.
9. Enter configuration values for the instance of Active Directory with security certificates installed.
10. Select the **Use SSL** check box.
11. Note the name in the Domain User field. Subsequent logins using Active Directory are authenticated using SSL.

For additional information about installing, configuring, and implementing LDAPS on a particular application server, see the original vendor's documentation.



---

## Chapter 10. Logging

Logging is essential when troubleshooting application problems as well as when planning preventive maintenance activities. As system and application events are generated, administrative personnel can be alerted when warning thresholds are reached or critical system events occur. Additionally, verbose information output can be stored in a text file for analysis at a later time.

The IBM SPSS Collaboration and Deployment Services Repository uses the log4j package for handling runtime log information. Log4j is Apache Software Foundation's logging solution for Java applications. The log4j approach permits logging control using a configuration file; the application binary does not have to be modified. For a comprehensive discussion of log4j, see the log4j website .

### Logging configuration file

The location of the IBM SPSS Collaboration and Deployment Services Repository logging configuration file varies depending on the host application server:

- **WebSphere:** <repository installation directory>/platform/log4j.properties
- **JBoss:** <JBoss server directory>/deploy/jboss-logging.xml
- **WebLogic:** <repository installation directory>/toDeploy/current/log4j.properties

This file controls both the destination and the amount of log output. Configuration of log4j is handled by modifying this file to define appenders for log destinations and to route logger output to those appenders.

The following default loggers are defined:

*Table 5. Loggers.*

Logger	Description
<i>log4j.rootCategory</i>	Root logger
<i>log4j.logger.com.spss</i>	All IBM SPSS Collaboration and Deployment Services events
<i>log4j.com.spss.cmor, log4j.com.spss.cmor.internal.MetaObjectImportEngine</i>	Repository events
<i>log4j.com.spss.security</i>	Security events
<i>log4j.com.spss.process</i>	Job scheduling events
<i>log4j.com.spss.reporting, log4j.com.spss.reportservice</i>	Reporting events
<i>log4j.com.spss.notification</i>	Notification events
<i>log4j.logger.org.springframework.jdbc.core.JdbcTemplate</i>	Spring framework JDBC events
<i>log4j.logger.com.spss.repository.internal.transfer</i>	Export-import events

The following appenders are defined:

- Console
- Main log (*cds.log*)
- Export-import transactions log (*cds\_transfer.log*)

The default location of the log files varies depending on the host application server:

- **WebSphere:** <WebSphere profile directory>/logs/
- **JBoss:** <JBoss server directory>/log/

- **WebLogic:** *<WebLogic domain directory>/servers/<server name>/logs/*



---

## Notices

This information was developed for products and services offered in the US. This material might be available from IBM in other languages. However, you may be required to own a copy of the product or product version in that language in order to access it.

IBM may not offer the products, services, or features discussed in this document in other countries. Consult your local IBM representative for information on the products and services currently available in your area. Any reference to an IBM product, program, or service is not intended to state or imply that only that IBM product, program, or service may be used. Any functionally equivalent product, program, or service that does not infringe any IBM intellectual property right may be used instead. However, it is the user's responsibility to evaluate and verify the operation of any non-IBM product, program, or service.

IBM may have patents or pending patent applications covering subject matter described in this document. The furnishing of this document does not grant you any license to these patents. You can send license inquiries, in writing, to:

*IBM Director of Licensing  
IBM Corporation  
North Castle Drive, MD-NC119  
Armonk, NY 10504-1785  
US*

For license inquiries regarding double-byte (DBCS) information, contact the IBM Intellectual Property Department in your country or send inquiries, in writing, to:

*Intellectual Property Licensing  
Legal and Intellectual Property Law  
IBM Japan Ltd.  
19-21, Nihonbashi-Hakozakicho, Chuo-ku  
Tokyo 103-8510, Japan*

INTERNATIONAL BUSINESS MACHINES CORPORATION PROVIDES THIS PUBLICATION "AS IS" WITHOUT WARRANTY OF ANY KIND, EITHER EXPRESS OR IMPLIED, INCLUDING, BUT NOT LIMITED TO, THE IMPLIED WARRANTIES OF NON-INFRINGEMENT, MERCHANTABILITY OR FITNESS FOR A PARTICULAR PURPOSE. Some jurisdictions do not allow disclaimer of express or implied warranties in certain transactions, therefore, this statement may not apply to you.

This information could include technical inaccuracies or typographical errors. Changes are periodically made to the information herein; these changes will be incorporated in new editions of the publication. IBM may make improvements and/or changes in the product(s) and/or the program(s) described in this publication at any time without notice.

Any references in this information to non-IBM websites are provided for convenience only and do not in any manner serve as an endorsement of those websites. The materials at those websites are not part of the materials for this IBM product and use of those websites is at your own risk.

IBM may use or distribute any of the information you provide in any way it believes appropriate without incurring any obligation to you.

Licensees of this program who wish to have information about it for the purpose of enabling: (i) the exchange of information between independently created programs and other programs (including this one) and (ii) the mutual use of the information which has been exchanged, should contact:

*IBM Director of Licensing  
IBM Corporation  
North Castle Drive, MD-NC119  
Armonk, NY 10504-1785  
US*

Such information may be available, subject to appropriate terms and conditions, including in some cases, payment of a fee.

The licensed program described in this document and all licensed material available for it are provided by IBM under terms of the IBM Customer Agreement, IBM International Program License Agreement or any equivalent agreement between us.

The performance data and client examples cited are presented for illustrative purposes only. Actual performance results may vary depending on specific configurations and operating conditions.

Information concerning non-IBM products was obtained from the suppliers of those products, their published announcements or other publicly available sources. IBM has not tested those products and cannot confirm the accuracy of performance, compatibility or any other claims related to non-IBM products. Questions on the capabilities of non-IBM products should be addressed to the suppliers of those products.

Statements regarding IBM's future direction or intent are subject to change or withdrawal without notice, and represent goals and objectives only.

This information contains examples of data and reports used in daily business operations. To illustrate them as completely as possible, the examples include the names of individuals, companies, brands, and products. All of these names are fictitious and any similarity to actual people or business enterprises is entirely coincidental.

#### COPYRIGHT LICENSE:

This information contains sample application programs in source language, which illustrate programming techniques on various operating platforms. You may copy, modify, and distribute these sample programs in any form without payment to IBM, for the purposes of developing, using, marketing or distributing application programs conforming to the application programming interface for the operating platform for which the sample programs are written. These examples have not been thoroughly tested under all conditions. IBM, therefore, cannot guarantee or imply reliability, serviceability, or function of these programs. The sample programs are provided "AS IS", without warranty of any kind. IBM shall not be liable for any damages arising out of your use of the sample programs.

---

## Privacy policy considerations

IBM Software products, including software as a service solutions, ("Software Offerings") may use cookies or other technologies to collect product usage information, to help improve the end user experience, to tailor interactions with the end user or for other purposes. In many cases no personally identifiable information is collected by the Software Offerings. Some of our Software Offerings can help enable you to collect personally identifiable information. If this Software Offering uses cookies to collect personally identifiable information, specific information about this offering's use of cookies is set forth below.

This Software Offering does not use cookies or other technologies to collect personally identifiable information.

If the configurations deployed for this Software Offering provide you as customer the ability to collect personally identifiable information from end users via cookies and other technologies, you should seek your own legal advice about any laws applicable to such data collection, including any requirements for notice and consent.

For more information about the use of various technologies, including cookies, for these purposes, See IBM's Privacy Policy at <http://www.ibm.com/privacy> and IBM's Online Privacy Statement at <http://www.ibm.com/privacy/details> the section entitled "Cookies, Web Beacons and Other Technologies" and the "IBM Software Products and Software-as-a-Service Privacy Statement" at <http://www.ibm.com/software/info/product-privacy>.

---

## Trademarks

IBM, the IBM logo, and [ibm.com](http://www.ibm.com) are trademarks or registered trademarks of International Business Machines Corp., registered in many jurisdictions worldwide. Other product and service names might be trademarks of IBM or other companies. A current list of IBM trademarks is available on the web at "Copyright and trademark information" at [www.ibm.com/legal/copytrade.shtml](http://www.ibm.com/legal/copytrade.shtml).

Adobe, the Adobe logo, PostScript, and the PostScript logo are either registered trademarks or trademarks of Adobe Systems Incorporated in the United States, and/or other countries.

Intel, Intel logo, Intel Inside, Intel Inside logo, Intel Centrino, Intel Centrino logo, Celeron, Intel Xeon, Intel SpeedStep, Itanium, and Pentium are trademarks or registered trademarks of Intel Corporation or its subsidiaries in the United States and other countries.

Linux is a registered trademark of Linus Torvalds in the United States, other countries, or both.

Microsoft, Windows, Windows NT, and the Windows logo are trademarks of Microsoft Corporation in the United States, other countries, or both.

UNIX is a registered trademark of The Open Group in the United States and other countries.

Java and all Java-based trademarks and logos are trademarks or registered trademarks of Oracle and/or its affiliates.

Other product and service names might be trademarks of IBM or other companies.



---

# Index

## Numerics

64-bit JRE 12

## A

Active Directory 39, 41  
adding nodes to the cluster 27  
AES 53  
application server clustering 24, 25, 26, 27  
application servers  
  requirements 12  
applications  
  supported versions 31  
authentication 39  
automatic deployment 19

## B

browser 56  
browser trust store 56  
browsers  
  single sign-on 47

## C

case insensitive collation 17  
certificate  
  importing 56  
certificates 53  
Chrome  
  single sign-on 47  
Citrix Presentation Server 11  
client installation from the repository 32  
client updates 37  
clipackagemanager.bat 37  
clipackagemanager.sh 37  
cluster  
  expanding 27  
  WebLogic 27  
  WebSphere 27  
clustering 24, 25, 26, 27  
collaboration 1  
command line 37  
configuration  
  application server 19  
  automatic deployment 19  
  manual deployment 19  
  repository database 19  
  silent 19  
configuring  
  DB2 16  
  MS SQL Server 17  
  Oracle databases 18  
context roots 49  
  in JBoss 51  
  in WebLogic 51  
  in WebSphere 50  
  URL prefix 50

credentials 34, 35

## D

database connectivity 29  
database maintenance 18  
database permissions 14  
databases  
  requirements 14  
DB2  
  configuration 16  
DB2 for Linux, UNIX, and Windows 14  
DB2 UDB 14  
dependency check 37  
deployment 2  
  automatic 19  
  manual 19, 22

## E

encrypt.bat 29  
encrypt.sh 29  
encryption 34, 35, 53, 54  
  SSL 55  
execution servers 5  
  remote process 2, 5  
  SAS 2, 5  
expanding the cluster 27  
export-import events  
  logging 59

## F

failover 24, 27  
features  
  removed 7  
FIPS 140-2 53

## G

Google Chrome  
  single sign-on 47

## I

IBM HTTP Server 27  
IBM Installation Manager 19, 32  
IBM SPSS Collaboration and Deployment  
  Services Deployment Manager 2, 4, 32  
IBM SPSS Collaboration and Deployment  
  Services Deployment Portal 2, 4  
IBM SPSS Collaboration and Deployment  
  Services Package Manager 37  
IBM SPSS Collaboration and Deployment  
  Services Password Utility 29  
IBM SPSS Collaboration and Deployment  
  Services Repository 2, 3  
IBM SPSS Modeler Decision  
  Management 5

IBM SPSS Modeler version 31  
IBM SPSS Statistics version 31  
importing  
  certificate 56  
installation 10  
installation scripts 22  
installing 19  
  packages 37

## J

Java 12  
JBoss 12, 46  
  single sign-on 43  
JCE 25, 26  
JCE module 53, 54  
JMS 35  
  WebLogic 36  
JMS failover 26  
JMS message store 16  
job events  
  logging 59  
Jython 22, 25

## K

Kerberos 44  
  domain 39  
  Key Distribution Center 39  
  Service Ticket 39  
Kerberos server 42  
Kerberos ticket cache 46

## L

LDAP 57  
  securing 57  
load balancer  
  hardware based 24, 27  
  software-based 24, 27  
log4j 59  
  configuration 59  
logging in 47  
logging tools 59  
logs 59

## M

manual 12  
manual deployment 19  
  WebLogic 22  
  WebSphere 22  
Microsoft Internet Explorer  
  single sign-on 47  
Microsoft SQL Server 14  
  configuration 17  
middle tier user login 46  
migration  
  notification templates 36

- migration (*continued*)
  - passwords 35
  - to a different database 34
  - to a different server 33
  - to a newer version of the repository 33
  - with a copy of repository database 34
  - with existing repository database 34
- MIT Kerberos 40
- Mozilla Firefox
  - single sign-on 47

## N

- Netezza 30
- notification events
  - logging 59
- notification templates migration 36

## O

- one-way trust
  - configuration 45
- OpenLDAP 40
- optional components 37
- Oracle 10g 14
- Oracle Database 14
- Oracle databases
  - configuration 18
- Oracle WebLogic 12
- output directory 19

## P

- packages
  - installing 37
    - in command line mode 37
    - silent 37
- password
  - changing 29
  - encrypting 29
- password migration 34, 35
- password utility 29
- performance degradation 11
- permissions 11, 14

## R

- redundancy 24, 27
- registry update files 44
- remote process
  - execution servers 2, 5
- remotely-deployed scoring servers 5
- reporting events
  - logging 59
- repository database maintenance 18
- repository events
  - logging 59
- repository updates 37
- requirements 11
  - application 31
  - application servers 12
  - databases 14

## S

- Safari 47
- SAS
  - execution server 2, 5
- scoring 5
- scoring servers 5
- scripted deployment into a WebLogic cluster 26
- Secure Sockets Layer 55
- securing
  - LDAP 57
- security
  - SSL 55
- security events
  - logging 59
- server clustering 24, 25, 26, 27
- server updates 37
- session affinity 27
- shared location 26
- SIB 35
- silent
  - configuration 19
  - IBM Installation Manager 19, 32
  - installation 19
  - package installation 37
  - uninstalling 32
- single sign-on 39, 42
  - Active Directory 41
  - application server configuration 42
  - Google Chrome 47
  - JBoss 43
  - Microsoft Internet Explorer 47
  - MIT Kerberos 40
  - Mozilla Firefox 47
  - one-way trust 45
  - OpenLDAP 40
  - registry update files 44
  - WebLogic 44
  - WebSphere 42
  - Windows Kerberos Server 40
- SPNEGO 47
- SSL 53, 55
  - certificates 53
  - overview 55
  - securing communications 55
- supported applications 31
- symmetric encryption 53
- System Integration Bus 16

## U

- UNC 25, 26
- uninstalling 32
- URL prefix 19, 27, 50, 57
- user preferences 4
- user privileges 11

## V

- version check 37
- versions
  - IBM SPSS Modeler 31
  - IBM SPSS Statistics 31
- virtualization 11
- VMWare 11

## W

- WebLogic 24, 46
  - cluster 26
  - JMS 26
  - manual deployment 26
  - migratable target 26
  - scripted deployment 26
  - single sign-on 44
- WebLogic Apache Plugin 24, 27
- WebSphere 12, 24, 27, 35, 46
  - automatic deployment 25
  - cluster 25
  - manual deployment 25
  - single sign-on 42
- Windows share 25, 26
- Windows Terminal Services 11





Printed in USA