

**IBM SPSS Modeler Administration  
Console 14.2 User Guide**



*Note:* Before using this information and the product it supports, read the general information under Notices on p. 14.

This edition applies to IBM SPSS Modeler 14 and to all subsequent releases and modifications until otherwise indicated in new editions.

Adobe product screenshot(s) reprinted with permission from Adobe Systems Incorporated.

Microsoft product screenshot(s) reprinted with permission from Microsoft Corporation.

Licensed Materials - Property of IBM

**© Copyright IBM Corporation 1994, 2011.**

U.S. Government Users Restricted Rights - Use, duplication or disclosure restricted by GSA ADP Schedule Contract with IBM Corp.

---

# Preface

IBM® SPSS® Modeler is the IBM Corp. enterprise-strength data mining workbench. SPSS Modeler helps organizations to improve customer and citizen relationships through an in-depth understanding of data. Organizations use the insight gained from SPSS Modeler to retain profitable customers, identify cross-selling opportunities, attract new customers, detect fraud, reduce risk, and improve government service delivery.

SPSS Modeler's visual interface invites users to apply their specific business expertise, which leads to more powerful predictive models and shortens time-to-solution. SPSS Modeler offers many modeling techniques, such as prediction, classification, segmentation, and association detection algorithms. Once models are created, IBM® SPSS® Modeler Solution Publisher enables their delivery enterprise-wide to decision makers or to a database.

## **About IBM Business Analytics**

IBM Business Analytics software delivers complete, consistent and accurate information that decision-makers trust to improve business performance. A comprehensive portfolio of [business intelligence](#), [predictive analytics](#), [financial performance and strategy management](#), and [analytic applications](#) provides clear, immediate and actionable insights into current performance and the ability to predict future outcomes. Combined with rich industry solutions, proven practices and professional services, organizations of every size can drive the highest productivity, confidently automate decisions and deliver better results.

As part of this portfolio, IBM SPSS Predictive Analytics software helps organizations predict future events and proactively act upon that insight to drive better business outcomes. Commercial, government and academic customers worldwide rely on IBM SPSS technology as a competitive advantage in attracting, retaining and growing customers, while reducing fraud and mitigating risk. By incorporating IBM SPSS software into their daily operations, organizations become predictive enterprises – able to direct and automate decisions to meet business goals and achieve measurable competitive advantage. For further information or to reach a representative visit <http://www.ibm.com/spss>.

## **Technical support**

Technical support is available to maintenance customers. Customers may contact Technical Support for assistance in using IBM Corp. products or for installation help for one of the supported hardware environments. To reach Technical Support, see the IBM Corp. web site at <http://www.ibm.com/support>. Be prepared to identify yourself, your organization, and your support agreement when requesting assistance.

---

# Contents

<b>1</b>	<b><i>Installing IBM SPSS Modeler Administration Console</i></b>	<b>1</b>
	System Requirements for Modeler Administration Console . . . . .	1
	Installing Modeler Administration Console . . . . .	1
<b>2</b>	<b><i>Using IBM SPSS Modeler Administration Console</i></b>	<b>3</b>
	Starting Modeler Administration Console . . . . .	3
	Configuring Access with Modeler Administration Console . . . . .	4
	SPSS Modeler Server Connections . . . . .	5
	SPSS Modeler Server Configuration . . . . .	5
	Connections/Sessions . . . . .	6
	Logging . . . . .	6
	Data File Access . . . . .	7
	Performance/Optimization . . . . .	8
	SQL . . . . .	9
	SSL . . . . .	10
	Coordinator of Processes Configuration . . . . .	11
	Options Visible Only in options.cfg . . . . .	12
	SPSS Modeler Server Monitoring . . . . .	12
	<b><i>Appendix</i></b>	
<b>A</b>	<b><i>Notices</i></b>	<b>14</b>
	<b><i>Index</i></b>	<b>17</b>

# ***Installing IBM SPSS Modeler Administration Console***

The following instructions are for installing IBM® SPSS® Modeler Administration Console. For a description of Modeler Administration Console, see Using IBM SPSS Modeler Administration Console on p. 3.

## ***System Requirements for Modeler Administration Console***

The following requirements are needed to run Modeler Administration Console.

- **Operating system.** Microsoft® Windows® 7 (Professional and Enterprise) 32-bit and 64-bit Editions; Microsoft Windows Vista (Business and Enterprise) with Service Pack 1 32-bit and 64-bit Editions; Microsoft Windows XP Professional with Service Pack 3 32-bit and 64-bit Editions. Windows Server 2008 (Standard and Enterprise) 32-bit and 64-bit; Windows Server 2008 R2 (Standard and Enterprise) 64-bit; Windows Server 2003® (Standard) 32-bit and 64-bit; Windows Server 2003 R2 (Standard) 32-bit and 64-bit.

*Note:* Modeler Administration Console can be installed only on Windows computers; however, it can administer an SPSS Modeler Server installed on any supported platform.

- **SPSS Modeler software.** SPSS Modeler Server release 12.0 or newer installed on the network.
- **Additional requirements.** The IBM® SPSS® Modeler Administration Console host computer must have network connectivity to the computer hosting IBM® SPSS® Modeler Server.

## ***Installing Modeler Administration Console***

### ***To Install Modeler Administration Console***

- ▶ Insert the SPSS Modeler Server installation disk into your disk drive. The AutoPlay feature presents a menu.
- ▶ On the AutoPlay menu, click *Install Modeler Administration Console* or *Install Modeler Administration Console for WIN64* depending on the platform to which you are installing, and then follow the instructions that appear on the screen.
- ▶ To start the console, follow the instructions under Starting Modeler Administration Console on p. 3.

***To Use an Existing Deployment Manager Installation***

If you have already installed a version of Deployment Manager to administer other server applications from IBM Corp., you can add the SPSS Modeler Server administration functionality to your existing Deployment Manager installation.

- ▶ Follow the procedure shown under *To Install Modeler Administration Console*, being sure to install in the same directory as your existing IBM® SPSS® Collaboration and Deployment Services Deployment Manager installation (for example, *C:\Program Files\IBM\SPSS\Collaboration and Deployment Services\4.<n>\Deployment Manager*). The installer will add the new IBM® SPSS® Modeler Server files to the existing installation.

# ***Using IBM SPSS Modeler Administration Console***

The Modeler Administration Console application provides a console user interface to monitor and configure your SPSS Modeler Server installations, and is available free-of-charge to current SPSS Modeler Server customers. The application can be installed only on Windows computers; however, it can administer a server installed on any supported platform.

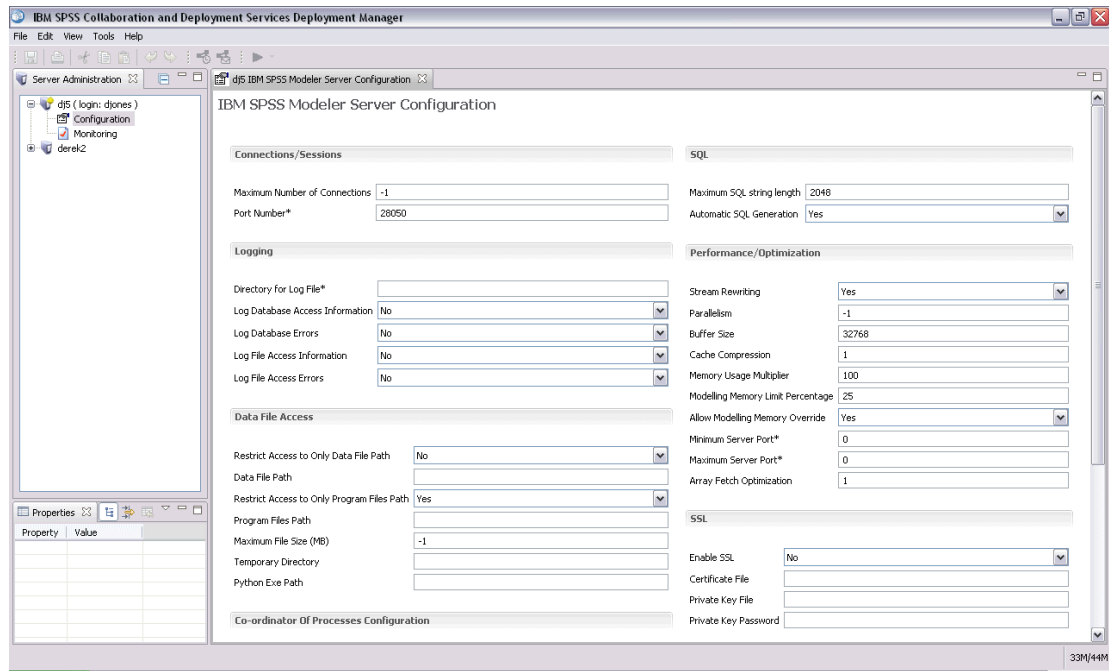
Many of the options available through Modeler Administration Console can also be specified in the *options.cfg* file, which is located in the SPSS Modeler Server installation directory under */config*. However, the Modeler Administration Console application provides a shared graphical interface that allows you to connect, configure, and monitor multiple servers.

## ***Starting Modeler Administration Console***

- ▶ From the Windows Start menu, choose [All] Programs, then IBM SPSS Collaboration and Deployment Services, then Deployment Manager, then IBM SPSS Modeler Administration Console <nn.n>.

When you first run the application, you see empty Server Administration and Properties panes (unless you already have Deployment Manager installed with an IBM SPSS Collaboration and Deployment Services server connection already set up). After you configure Modeler Administration Console, the Server Administrator pane on the left displays a node for each SPSS Modeler Server that you want to administer. The right-hand pane shows the configuration options for the selected server. You must first [set up a connection](#) for each server that you want to administer.

**Figure 2-1**  
*Modeler Administration Console interface*



## ***Configuring Access with Modeler Administration Console***

Administrator access to SPSS Modeler Server through Modeler Administration Console is controlled with the `administrators` line in the `options.cfg` file, located in the SPSS Modeler Server installation directory under `/config`. This line is commented out by default, so you must edit this line to allow access to specific people, or use `*` to allow access to all users, as shown in the following examples:

```
administrators, "*"
administrators, "jsmith,mjones,achavez"
```

- The line must begin with `administrators`, and the entries must be contained in quotation marks. Entries are case sensitive.
- Separate multiple user IDs with commas.
- For Windows accounts, do not use domain names.
- Use the asterisk with care. It allows anyone with a valid user account for IBM® SPSS® Modeler Server (which, in most cases, is anyone on the network) to log in and change the configuration options.



## SPSS Modeler Server Connections

You must specify a connection to each SPSS Modeler Server on your network that you want to administer. You must then log in to each server. Although the server connection is remembered across Modeler Administration Console sessions, the login credentials are not. You must log in every time you start Modeler Administration Console.

### **To Set Up a Server Connection**

- ▶ Ensure that the IBM® SPSS® Modeler Server service is started.
- ▶ From the File menu, choose New and then Administered Server Connection.
- ▶ On the first page of the wizard, enter a name for your server connection. The name is for your own use and should be something descriptive; for example, *Production Server*. Ensure that Type is set to Administered IBM SPSS Modeler Server, then click Next.
- ▶ On the second page, enter the hostname or IP address of the server. If you have changed the port from the default, enter the port number. Click Finish. The new server connection is shown in the Server Administrator pane.

To perform administration tasks, you must now log in.

### **To Log in to the Server**

- ▶ In the Server Administrator pane, double-click to select the server to which you want to log in.
- ▶ In the Login dialog box, enter your credentials. (Use your user account for the server host.) Click OK.

If the login fails with the message *Unable to obtain administrator rights on server*, the most likely cause is that administrator access has not been configured correctly. [For more information, see the topic Configuring Access with Modeler Administration Console on p. 4.](#)

If the login fails with the message *Failed to connect to server '<server>'*, make sure that the user ID and password are correct, then make sure that the SPSS Modeler Server service is running. For example, under Windows, go to Control Panel > Administrative Tools > Services and check the entry for IBM SPSS Modeler Server. If the Status column does not show Started, select this line on the screen and click Start, then retry the login.

Once you log in to your SPSS Modeler Server, two options are shown below the server name, [Configuration](#) and [Monitoring](#). Double-click one of these options.

## SPSS Modeler Server Configuration

The Configuration pane shows configuration options for SPSS Modeler Server. Use this pane to change the options as desired. Click Save on the toolbar to save the changes. (Note that changing the port number requires a server restart in order to take effect.)

The options are described in the following sections, with the corresponding line in *options.cfg* given in parentheses for each option. Options that are visible only in *options.cfg* are described at the end of this section.

## Connections/Sessions

Figure 2-2  
Connections/Sessions settings

Connections/Sessions	
Maximum Number of Connections	-1
Port Number*	28047

**Maximum number of connections.** (*max\_sessions*) Maximum number of users connected at one time. A value of  $-1$  indicates no limit.

**Port number.** (*port\_number*) The port number for SPSS Modeler Server to listen on. Change if another application already uses the default (28047). End users must know the port number in order to use SPSS Modeler Server.

## Logging

Figure 2-3  
Logging settings

Logging	
Directory for Log File*	
Log Database Access Information	No
Log Database Errors	No
Log File Access Information	No
Log File Access Errors	No

**Directory for log file.** (*log\_directory*) Location of the *messages.log* file. A blank string means *[server install path]/log*. Note that you must use forward slashes.

**Log database access information.** (*log\_database\_access*) Add database access information to the log file.

**Log database errors.** (*log\_database\_errors*) Add database errors to the log file.

**Log file access information.** (*log\_file\_access*) Add file access information to the log file.

**Log file access errors.** (*log\_file\_errors*) Add file access errors to the log file.

## Data File Access

Figure 2-4  
Data File Access settings

Data File Access	
Restrict Access to Only Data File Path	No
Data File Path	
Restrict Access to Only Program Files Path	Yes
Program Files Path	
Maximum File Size (MB)	-1
Temporary Directory	
Python Exe Path	

**Restrict access to only data file path.** (`data_files_restricted`) When set to *yes*, this option restricts data files to the standard data directory and those listed in the Data File Path below.

**Data file path.** (`data_file_path`) A list of additional directories to which clients are allowed to read and write data files. This option is ignored unless the Restrict Access to Only Data File Path option is turned on. Note that you should use forward slashes in all pathnames. Specify multiple directories using semicolons (for example, *[server install path]/data;c:/data;c:/temp*).

**Restrict access to only program files path.** (`program_files_restricted`) When set to *yes*, this option restricts program file access to the standard *bin* directory and those listed in the Program Files Path below.

**Program files path.** (`program_file_path`) A list of additional directories from which clients are allowed to execute programs. This option is ignored unless the Restrict Access to Only Program Files Path option is turned on. Note that you should use forward slashes in all pathnames. Specify multiple directories using semicolons.

**Maximum file size (MB).** (`max_file_size`) Maximum size of temporary and exported data files created during stream execution (does not apply to SAS and SPSS Statistics data files). A value of *-1* indicates no limit.

**Temporary directory.** (`temp_directory`) The directory used to store temporary data files (cache files). Ideally, this directory should be on a separate high-speed drive or controller because speed of access to this directory may have a significant impact on performance. You may specify multiple temporary directories, separating each with a comma. These should be located on different disks; the first directory is used most often, and additional directories are used to store temporary work files when certain data preparation operations (such as sort) use parallelism during execution. Allowing each execution thread to use separate disks for temporary storage can improve performance. Use forward slashes in all path specifications. *Note:* Temporary files are generated in this directory during startup of SPSS Modeler Server. Ensure that you have the necessary access rights to this directory (for example, if the temporary directory is a shared network folder), otherwise SPSS Modeler Server startup will fail.

**Python Exe Path.** (`python_exe_path`) Full path to the python executable including the executable name. Note that Restrict access to only program files path may need to be set to *No* depending on the location where python is installed.

## Performance/Optimization

Figure 2-5  
Performance/Optimization settings

Performance/Optimization	
Stream Rewriting	Yes
Parallelism	-1
Buffer Size	32768
Cache Compression	1
Memory Usage Multiplier	100
Modelling Memory Limit Percentage	25
Allow Modelling Memory Override	Yes
Minimum Server Port	0
Maximum Server Port	0
Array Fetch Optimization	1

**Stream rewriting.** (`stream_rewriting_enabled`) Allows the server to optimize streams by rewriting them. For example, the server might push data reduction operations closer to the source node to minimize the size of the dataset as early as possible. Disabling this option is normally recommended only if the optimization causes an error or other unexpected results. This setting overrides the corresponding client optimization setting.

**Parallelism.** (`max_parallelism`) Describes the number of parallel worker threads that SPSS Modeler is allowed to use when running a stream. Setting this to 0 or any negative number causes IBM® SPSS® Modeler to match the number of threads to the number of available processors on the computer; the default value for this option is -1. To turn off parallel processing (for machines with multiple processors), set this option to 1. To allow limited parallel processing, set it to a number smaller than the number of processors on your machine. Note that a hyperthreaded or dual-core processor is treated as two processors.

**Buffer size (bytes).** (`io_buffer_size`) Data files transferred from the server to the client are passed through a buffer of this number of bytes.

**Cache compression.** (`cache_compression`) An integer value in the range 0 to 9 that controls the compression of cache and other files in the server's temporary directory. Compression reduces the amount of disk space used, which can be important when space is limited, and improves performance by reducing the amount of disk activity needed to create and read the cache. Compression increases processor time, but this is almost always made up by the reduction in disk access time. Note that only certain caches, those accessed sequentially, can be compressed. This option does not apply to random-access caches, such as those used by the network training algorithms. A value of 0 disables compression entirely. Values from 1 upward provide increasing degrees of compression but with a corresponding cost in access time. The default value is 1; higher values are rarely needed except where disk space is at a premium.

**Memory usage multiplier.** (`memory_usage`) Controls the proportion of physical memory allocated for sorting and other in-memory caches. The default is 100, which corresponds to approximately 10% of physical memory. Increase this value to improve sort performance where free memory is available, but be careful of increasing it so high as to cause excessive paging.

**Modeling memory limit percentage.** (`modelling_memory_limit_percentage`) Controls the proportion of physical memory allocated for training neural net, Kohonen, and  $k$ -means models. The default is 25%. Increase this value to improve training performance where free memory is available, but be careful of increasing it so high as to cause excessive paging when data spills onto the disk.

**Allow modeling memory override.** (`allow_modelling_memory_override`) Enables or disables the Optimize for Speed option in certain modeling nodes. The default is enabled. This option allows the modeling algorithm to claim all available memory, bypassing the percentage limit option. You may want to disable this if you need to share memory resources on the server machine.

**Maximum and minimum server port.** (`max_server_port` and `min_server_port`) Specifies the range of port numbers that can be used for the additional socket connections between client and server that are required for interactive models and stream execution. These require the server to listen on another port; not restricting the range could cause problems for users on systems with firewalls. Default value for both is  $-1$ , meaning “no restriction.” Thus, for example, to set the server to listen on port 8000 or above, you would set `min_server_port` to 8000 and `max_server_port` to  $-1$ .

Note that you must open additional ports over the main server port to open or execute a stream, and correspondingly more ports if you want to open or execute concurrent streams. This is required in order to capture feedback from the stream execution.

By default, SPSS Modeler will use any open port that is available; if it does not find one (for example, if they are all closed by a firewall), an error is displayed when you execute the stream. To configure the range of ports, SPSS Modeler will need two open ports (in addition to the main server port) available per concurrent stream, plus an additional port for each connected client that has an ODBC connection. To execute more concurrent streams, you can widen the range of port numbers and open up more ports on the firewall accordingly.

*Note:* If you change these parameters, you need to restart SPSS Modeler Server for the change to take effect.

**Array fetch optimization.** (`sql_row_array_size`) Controls the way that SPSS Modeler Server fetches data from the ODBC datasource. The default value is 1, which fetches a single row at a time. Increasing this value causes the server to read the information in larger chunks, fetching the specified number of rows into an array. With some operating system/database combinations, this can result in improvements to the performance of SELECT statements.

## SQL

Figure 2-6  
SQL settings

The screenshot shows a dialog box titled "SQL". It contains two settings:

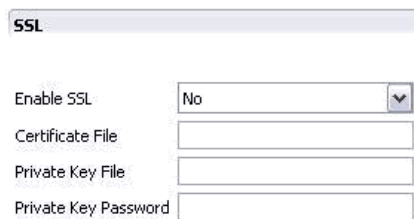
- Maximum SQL string length:** A text input field with the value "2048".
- Automatic SQL Generation:** A dropdown menu with "Yes" selected.

**Maximum SQL string length.** (`max_sql_string_length`) Maximum length of a string imported from the database with SQL. String values longer than this are truncated on the right without warning. The valid range is between 1 and 65,535 characters.

**Automatic SQL generation.** (`sql_generation_enabled`) Allows automatic SQL generation for streams, which may substantially improve performance. The default is enabled. Disabling this option is recommended only if the database is not able to support queries submitted by SPSS Modeler Server. Note that this setting overrides the corresponding client optimization setting; also note that for purposes of scoring, SQL generation must be enabled separately for each modeling node regardless of this setting.

## SSL

Figure 2-7  
SSL settings



SSL	
Enable SSL	No
Certificate File	
Private Key File	
Private Key Password	

**Enable SSL.** (`ssl_enabled`) Enables SSL encryption for connections between SPSS Modeler and SPSS Modeler Server.

**Certificate file.** (`ssl_certificate_file`) The public SSL certificate file to be loaded when the server starts.

**Private key file.** (`ssl_private_key_file`) The private SSL key file to be loaded when the server starts up.

**Private key password.** (`ssl_private_key_password`) Password key for the specified certificate. Note this key must have been signed by at least one of the Certification Authorities listed in the configured certificate file.

## Coordinator of Processes Configuration

Figure 2-8  
Coordinator of Processes configuration settings

Co-ordinator Of Processes Configuration	
Host*	spsscop
Port Number*	8080
Login Name*	
Password*	
Enabled*	No
Server Name*	
Description*	
Update Interval (min)*	2
Weight	1
Service Host*	

Items marked (\*) require a server restart to take effect.

**Host.** (`cop_host`) The hostname or IP address of the Coordinator of Processes service. The default “spsscop” is a vanity name which administrators can choose to add as an alias for the IBM SPSS Collaboration and Deployment Services host in DNS.

**Port number.** (`cop_port_number`) The port number of the Coordinator of Processes service. The default, 8080, is the IBM SPSS Collaboration and Deployment Services default.

**Login name.** (`cop_user_name`) The user name for authentication to the Coordinator of Processes service. This is an IBM SPSS Collaboration and Deployment Services login name so may include a security-provider prefix (for example: ad/jsmith).

**Password.** (`cop_password`) The encrypted password for authentication to the Coordinator of Processes service.

To create the password file, you will need to use the password utility program, *pwutil*, located in the *bin* directory of the SPSS Modeler Server installation.

**Enabled.** (`cop_enabled`) Determines whether the server should attempt to register with the Coordinator of Processes. The default is *not* to register because the administrator should choose which services are advertised through the Coordinator of Processes.

**Server name.** (`cop_service_name`) The name of this SPSS Modeler Server instance; the default is the host name.

**Description.** (`cop_service_description`) A description of this instance.

**Update interval (min).** (`cop_update_interval`) The number of minutes between keep-alive messages; the default is 2.

**Weight.** (`cop_service_weight`) The weight of this instance, specified as an integer between 1 and 10. A higher weight attracts more connections. The default is 1.

**Service host.** (cop\_service\_host) The fully-qualified host name of the IBM® SPSS® Modeler Server host. The default of the host name is derived automatically; the administrator can override the default for multi-homed hosts.

### ***Options Visible Only in options.cfg***

**default\_sql\_string\_length.** Specifies the default width of string columns that will be created within database cache tables. String fields in database cache tables will be created with a default width of 255 if there is no upstream type information. If you have wider values than this in your data, either instantiate an upstream Type node with those values, or set this parameter to a value that is large enough to accommodate those string values.

**max\_transfer\_size.** For internal system use only; do not modify.

**start\_process\_as\_login\_user.** Set this to true if using single sign-on and you are connected to a IBM® SPSS® Collaboration and Deployment Services server that does not use the same authentication method as the IBM® SPSS® Modeler Server host. Setting this option to true enables child processes to use the SPSS Modeler Server login details.

**administrators.** Specify the usernames of those users to whom you want to grant administrator access. [For more information, see the topic Configuring Access with Modeler Administration Console on p. 4.](#)

**supported\_sql\_type\_logging.** For debug purposes only; do not modify unless instructed to do so by a technical-support representative.

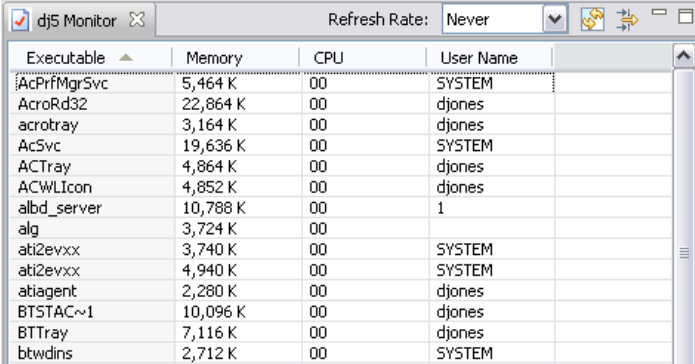
**allow\_config\_custom\_overrides.** Do not modify unless instructed to do so by a technical-support representative.

## ***SPSS Modeler Server Monitoring***

The monitoring pane of Modeler Administration Console shows a snapshot of all processes running on the SPSS Modeler Server computer, similar to the Windows Task Manager. To activate the monitoring pane, double-click the Monitoring node beneath the desired server in the Server Administrator pane. This populates the pane with a current snapshot of data from the server. The data refreshes at the rate shown (one minute by default). To refresh the data manually, click the Refresh button. To show only SPSS Modeler Server processes in this list, click the Filter out non-SPSS Modeler processes button.



Figure 2-9  
IBM SPSS Modeler Administration Console monitoring pane



Executable	Memory	CPU	User Name
AcPrfMgrSvc	5,464 K	00	SYSTEM
AcroRd32	22,864 K	00	djones
acrotray	3,164 K	00	djones
AcSvc	19,636 K	00	SYSTEM
ACTray	4,864 K	00	djones
ACWLIcon	4,852 K	00	djones
albd_server	10,788 K	00	1
alg	3,724 K	00	
ati2evxx	3,740 K	00	SYSTEM
ati2evxx	4,940 K	00	SYSTEM
atiagent	2,280 K	00	djones
BTSTAC~1	10,096 K	00	djones
BTTray	7,116 K	00	djones
btwdins	2,712 K	00	SYSTEM

# Notices

This information was developed for products and services offered worldwide.

IBM may not offer the products, services, or features discussed in this document in other countries. Consult your local IBM representative for information on the products and services currently available in your area. Any reference to an IBM product, program, or service is not intended to state or imply that only that IBM product, program, or service may be used. Any functionally equivalent product, program, or service that does not infringe any IBM intellectual property right may be used instead. However, it is the user's responsibility to evaluate and verify the operation of any non-IBM product, program, or service.

IBM may have patents or pending patent applications covering subject matter described in this document. The furnishing of this document does not grant you any license to these patents. You can send license inquiries, in writing, to:

*IBM Director of Licensing IBM Corporation North Castle Drive Armonk, NY 10504-1785 U.S.A.*

For license inquiries regarding double-byte character set (DBCS) information, contact the IBM Intellectual Property Department in your country or send inquiries, in writing, to:

*Intellectual Property Licensing Legal and Intellectual Property Law IBM Japan Ltd. 1623-14, Shimotsuruma, Yamato-shi Kanagawa 242-8502 Japan*

**The following paragraph does not apply to the United Kingdom or any other country where such provisions are inconsistent with local law:** INTERNATIONAL BUSINESS MACHINES PROVIDES THIS PUBLICATION "AS IS" WITHOUT WARRANTY OF ANY KIND, EITHER EXPRESS OR IMPLIED, INCLUDING, BUT NOT LIMITED TO, THE IMPLIED WARRANTIES OF NON-INFRINGEMENT, MERCHANTABILITY OR FITNESS FOR A PARTICULAR PURPOSE. Some states do not allow disclaimer of express or implied warranties in certain transactions, therefore, this statement may not apply to you.

This information could include technical inaccuracies or typographical errors. Changes are periodically made to the information herein; these changes will be incorporated in new editions of the publication. IBM may make improvements and/or changes in the product(s) and/or the program(s) described in this publication at any time without notice.

Any references in this information to non-IBM Web sites are provided for convenience only and do not in any manner serve as an endorsement of those Web sites. The materials at those Web sites are not part of the materials for this IBM product and use of those Web sites is at your own risk.

IBM may use or distribute any of the information you supply in any way it believes appropriate without incurring any obligation to you.

Licensees of this program who wish to have information about it for the purpose of enabling: (i) the exchange of information between independently created programs and other programs (including this one) and (ii) the mutual use of the information which has been exchanged, should contact:

*IBM Software Group Attention: Licensing 233 S. Wacker Dr. Chicago, IL 60606 USA*

Such information may be available, subject to appropriate terms and conditions, including in some cases, payment of a fee.

The licensed program described in this document and all licensed material available for it are provided by IBM under terms of the IBM Customer Agreement, IBM International Program License Agreement or any equivalent agreement between us.

Any performance data contained herein was determined in a controlled environment. Therefore, the results obtained in other operating environments may vary significantly. Some measurements may have been made on development-level systems and there is no guarantee that these measurements will be the same on generally available systems. Furthermore, some measurements may have been estimated through extrapolation. Actual results may vary. Users of this document should verify the applicable data for their specific environment.

Information concerning non-IBM products was obtained from the suppliers of those products, their published announcements or other publicly available sources. IBM has not tested those products and cannot confirm the accuracy of performance, compatibility or any other claims related to non-IBM products. Questions on the capabilities of non-IBM products should be addressed to the suppliers of those products.

All statements regarding IBM's future direction or intent are subject to change or withdrawal without notice, and represent goals and objectives only.

This information contains examples of data and reports used in daily business operations. To illustrate them as completely as possible, the examples include the names of individuals, companies, brands, and products. All of these names are fictitious and any similarity to the names and addresses used by an actual business enterprise is entirely coincidental.

If you are viewing this information softcopy, the photographs and color illustrations may not appear.

### **Trademarks**

IBM, the IBM logo, ibm.com, and SPSS are trademarks of IBM Corporation, registered in many jurisdictions worldwide. A current list of IBM trademarks is available on the Web at <http://www.ibm.com/legal/copytrade.html>.

Adobe, the Adobe logo, PostScript, and the PostScript logo are either registered trademarks or trademarks of Adobe Systems Incorporated in the United States, and/or other countries.

IT Infrastructure Library is a registered trademark of the Central Computer and Telecommunications Agency which is now part of the Office of Government Commerce.

Intel, Intel logo, Intel Inside, Intel Inside logo, Intel Centrino, Intel Centrino logo, Celeron, Intel Xeon, Intel SpeedStep, Itanium, and Pentium are trademarks or registered trademarks of Intel Corporation or its subsidiaries in the United States and other countries.

Linux is a registered trademark of Linus Torvalds in the United States, other countries, or both.

Microsoft, Windows, Windows NT, and the Windows logo are trademarks of Microsoft Corporation in the United States, other countries, or both.

ITIL is a registered trademark, and a registered community trademark of the Office of Government Commerce, and is registered in the U.S. Patent and Trademark Office.

UNIX is a registered trademark of The Open Group in the United States and other countries.

Cell Broadband Engine is a trademark of Sony Computer Entertainment, Inc. in the United States, other countries, or both and is used under license therefrom.

Java and all Java-based trademarks and logos are trademarks of Sun Microsystems, Inc. in the United States, other countries, or both.

Linear Tape-Open, LTO, the LTO Logo, Ultrium, and the Ultrium logo are trademarks of HP, IBM Corp. and Quantum in the U.S. and other countries.

Other product and service names might be trademarks of IBM or other companies.

---

# Index

- administrator access
  - for IBM SPSS Modeler Server, 4
- allow\_modelling\_memory\_override
  - options.cfg* file, 8
  
- cache compression, 8
- cache\_compression
  - options.cfg* file, 8
- configuration options
  - automatic SQL generation, 9
  - connections and sessions, 6
  - coordinator of processes, 11
  - COP, 11
  - data file access, 7
  - logging, 6
  - login attempts, 6
  - memory management, 8
  - overview, 5
  - parallel processing, 8
  - performance and optimization, 8
  - port number, 6
  - SQL string length, 9
  - SSL data encryption, 10
  - stream rewriting, 8
  - temp directory, 7
- coordinator of processes configuration
  - for IBM SPSS Modeler Server, 11
- COP configuration
  - for IBM SPSS Modeler Server, 11
- cop\_enabled
  - options.cfg* file, 11
- cop\_host
  - options.cfg* file, 11
- cop\_password
  - options.cfg* file, 11
- cop\_port\_number
  - options.cfg* file, 11
- cop\_service\_description
  - options.cfg* file, 11
- cop\_service\_host
  - options.cfg* file, 11
- cop\_service\_name
  - options.cfg* file, 11
- cop\_service\_weight
  - options.cfg* file, 11
- cop\_update\_interval
  - options.cfg* file, 11
- cop\_user\_name
  - options.cfg* file, 11
  
- data\_file\_path
  - options.cfg* file, 7
- data\_files\_restricted
  - options.cfg* file, 7
  
- error on stream execution, 9
  
- firewall settings
  - options.cfg* file, 9
  
- IBM SPSS Modeler Administration Console, 1, 3
  - administrator access, 4
- IBM SPSS Modeler Server
  - administration of, 1, 3
  - administrator access, 4
  - configuration options, 5
  - coordinator of processes configuration, 11
  - COP configuration, 11
  - log files, 6
  - monitoring usage, 12
  - port number, 6
  - server processes, 12
  - temp directory, 7
- io\_buffer\_size
  - options.cfg* file, 8
  
- legal notices, 14
- log files
  - for IBM SPSS Modeler Server, 6
- log\_database\_access
  - options.cfg* file, 6
- log\_database\_errors
  - options.cfg* file, 6
- log\_directory
  - options.cfg* file, 6
- log\_file\_access
  - options.cfg* file, 6
- log\_file\_errors
  - options.cfg* file, 6
  
- max\_file\_size
  - options.cfg* file, 7
- max\_login\_attempts
  - options.cfg* file, 6
- max\_parallelism
  - options.cfg* file, 8
- max\_sessions
  - options.cfg* file, 6
- max\_sql\_string\_length
  - options.cfg* file, 9
- memory management
  - administration options, 8
- memory\_usage
  - options.cfg* file, 8
- modeling
  - memory management, 8
- modelling\_memory\_limit\_percentage
  - options.cfg* file, 8

multiple stream execution, 9

parallel processing

controlling, 8

port number

IBM SPSS Modeler Server, 6

port settings

*options.cfg* file, 8

port\_number

*options.cfg* file, 6

processors

multiple, 8

program\_file\_path

*options.cfg* file, 7

program\_files\_restricted

*options.cfg* file, 7

server port settings

*options.cfg* file, 8

SQL generation

enabling for IBM SPSS Modeler Server, 9

sql\_generation\_enabled

*options.cfg* file, 9

SSL data encryption

enabling for IBM SPSS Modeler Server, 10

ssl\_certificate\_file

*options.cfg* file, 10

ssl\_enabled

*options.cfg* file, 10

ssl\_private\_key\_file

*options.cfg* file, 10

ssl\_private\_key\_password

*options.cfg* file, 10

stream\_rewriting\_enabled

*options.cfg* file, 8

temp directory

for IBM SPSS Modeler Server, 7

temp\_directory

*options.cfg* file, 7

trademarks, 15