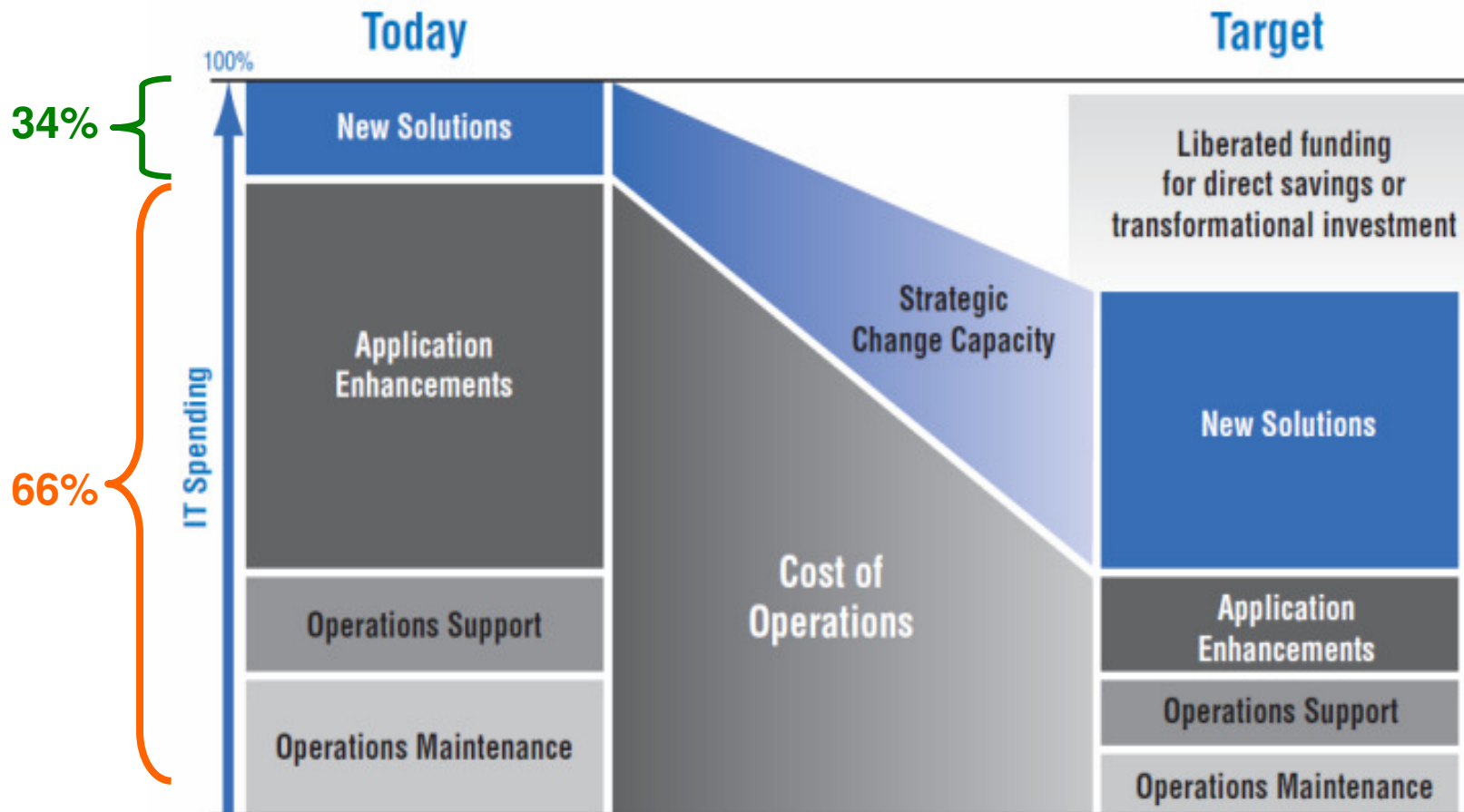


IBM Next Generation ALM Seminar

Kurt Solarte
May 2012

Balancing Resources to Support Business Innovation

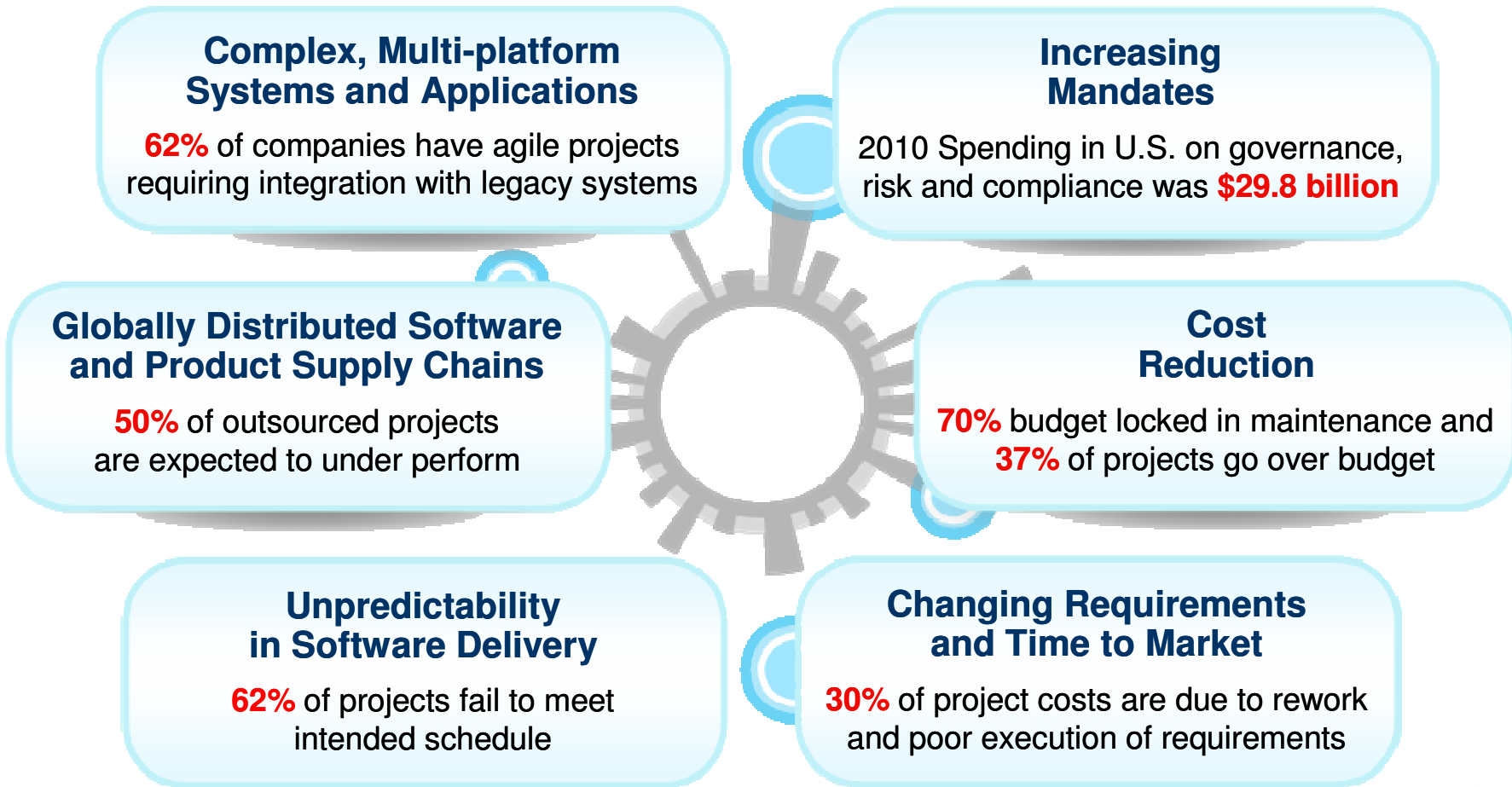
Balance IT investments to focus on new solutions.



- Forrester estimates that ongoing operations and maintenance consume **66%** of IT budgets
- While new projects and software initiatives represent only **34%**

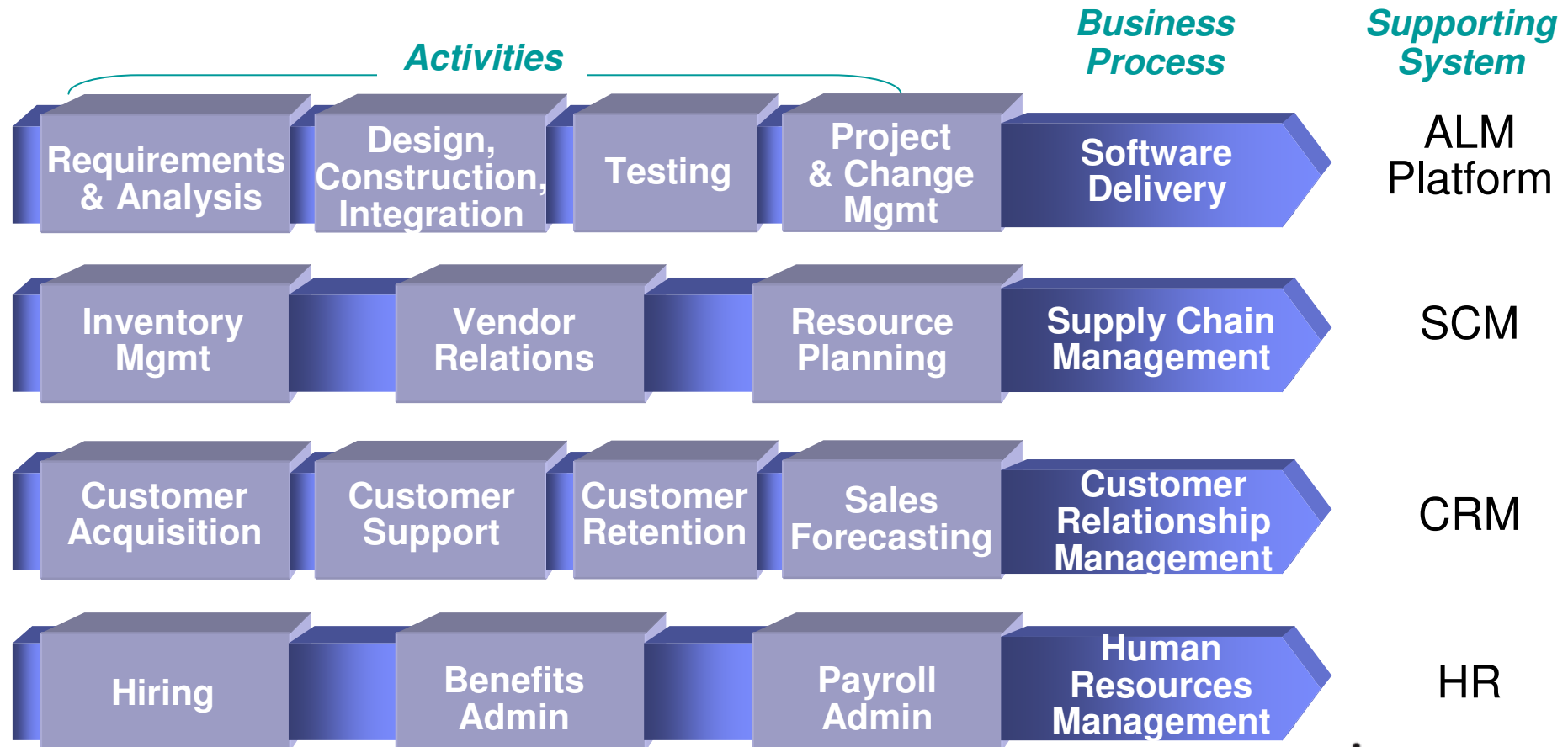
Realities can stall software-driven innovation

Complexities in software delivery compounded by market pressures



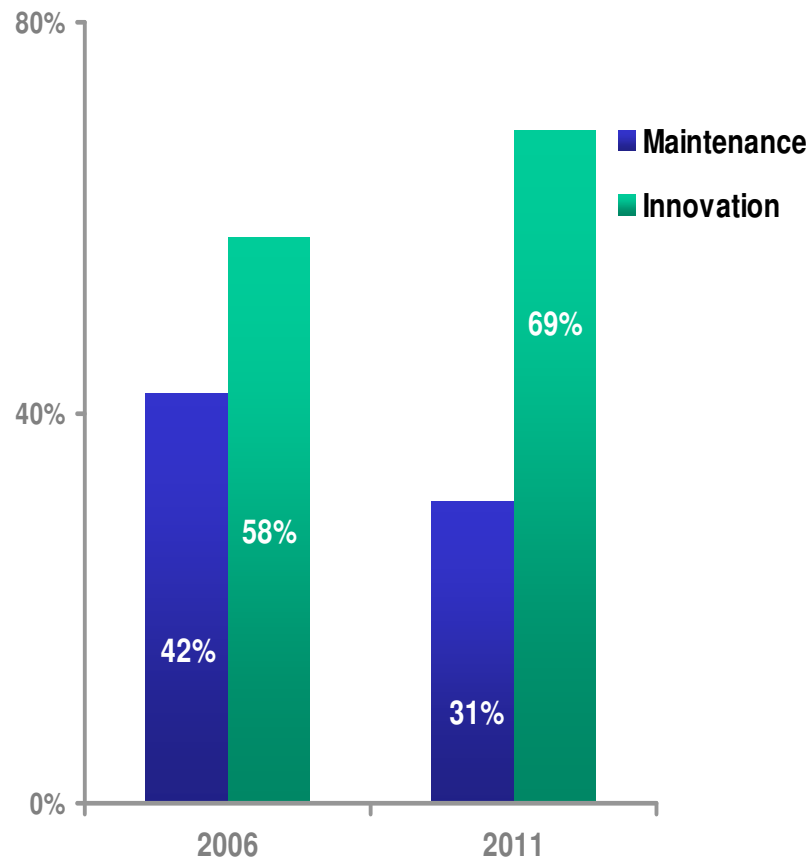
Core Business Process

Software Delivery is now a key business process & not getting any easier!



IBM Rational software delivery and development transformation: Improved Efficiency Means More Innovation

Investments



Efficiency Measures	2006 → 2011	
On time delivery	47%	95%
Defect backlog in months	>9	2.7
Beta defects fixed before GA	3%	95%
Agile / iterative projects	5%	85%



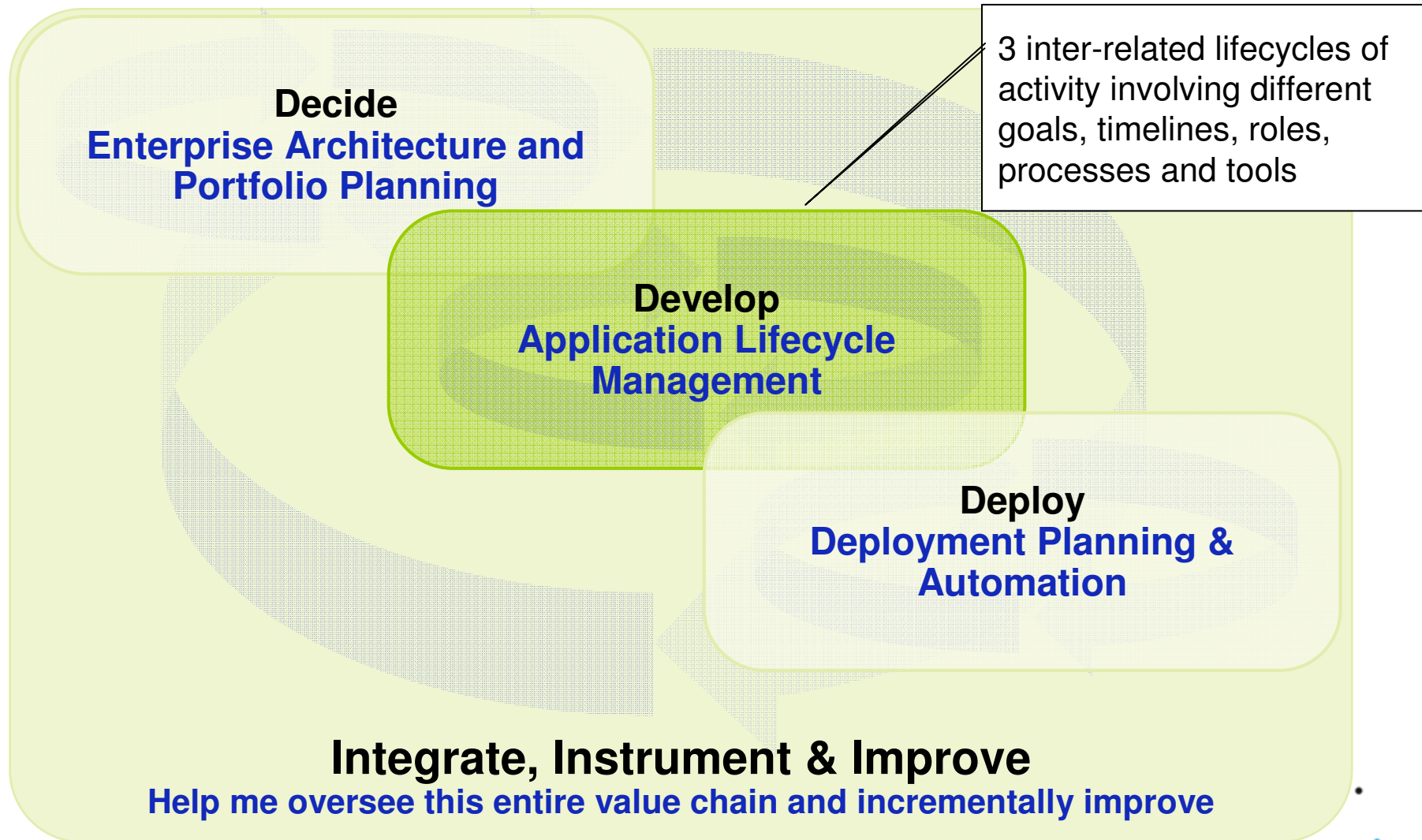
Application Lifecycle Management drives the IBM transformation

Application Lifecycle Management coordinates the flow of people, processes and information in an iterative cycle of software delivery activities

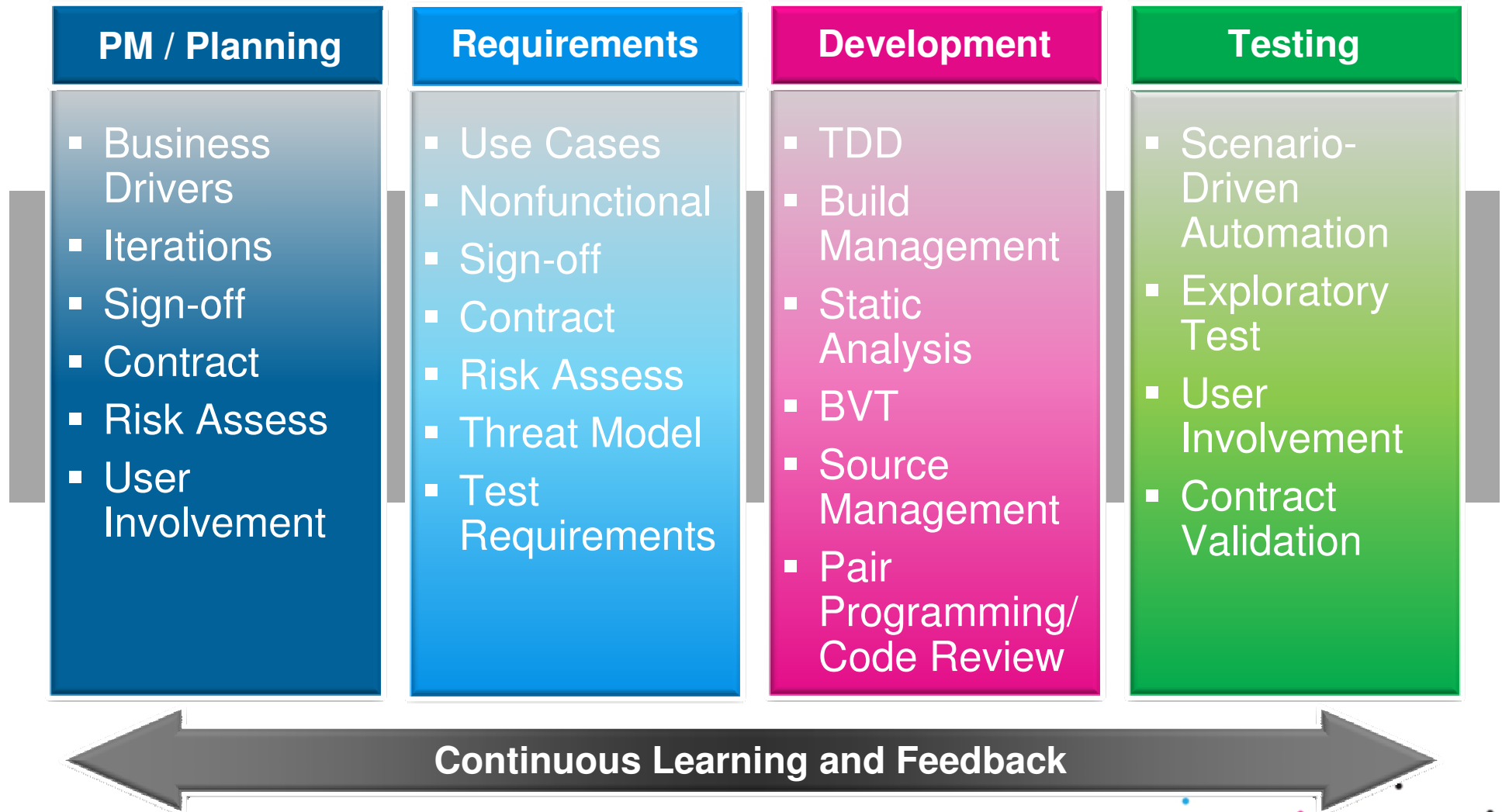
- Custom developed projects
- Off the shelf packaged applications
- Enterprise applications
- Mobile applications



Application Lifecycle Management in context




ALM is about connecting the disciplines



Source: Gartner Application Architecture, Development & Integration Summit Presentation, The Future and Present of AD, Thomas E. Murphy, December 2008

Agenda

- 
- 1 Introduction and current market situation
 - 2 Delivering the 5 ALM imperatives**
 - 3 IBM Rational Application Lifecycle Management
 - 4 Proven results

Criteria for effective lifecycle management: 5 ALM imperatives

1. Real-time planning
2. Lifecycle traceability
3. In-Context collaboration
4. Development intelligence
5. Continuous improvement

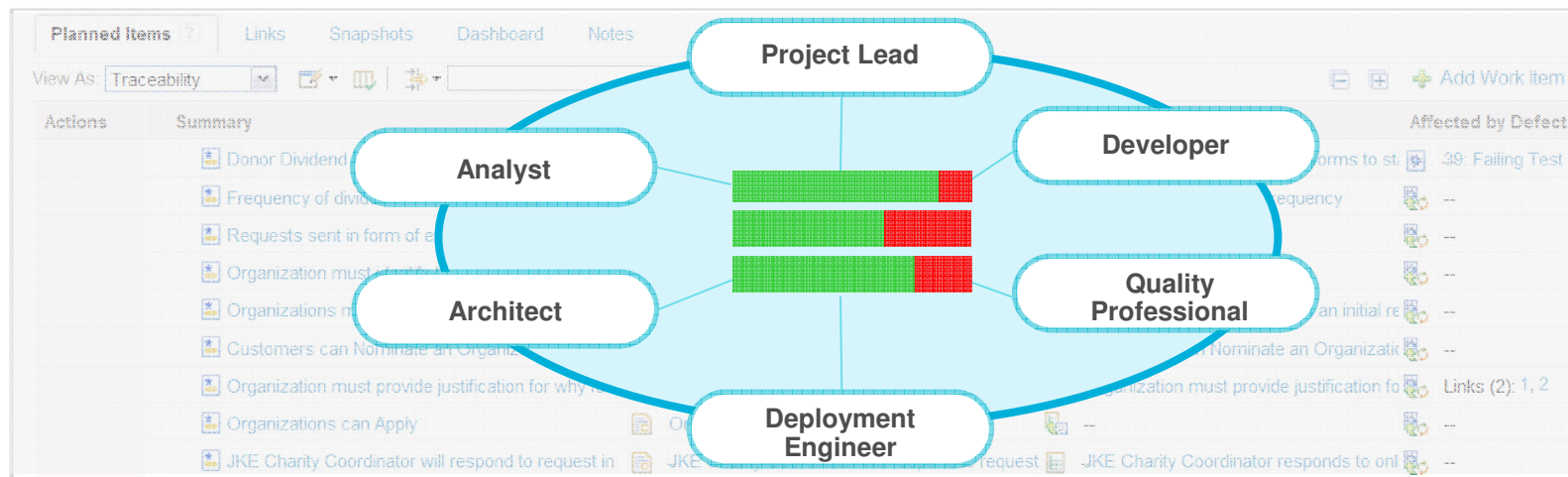
Criteria for effective lifecycle management: 5 ALM imperatives

1. **Real-time planning**
2. Lifecycle traceability
3. In-Context collaboration
4. Development intelligence
5. Continuous improvement

What is Real-time Planning?

Real-time Planning improves time to delivery by:

- Providing a **single plan** that spans requirements, development, and test, ensuring a team understanding of the overall scope of a project
- Allowing **everyone to participate** in keeping the plan current and accurate
- **Integrating planning with execution**, ensuring the entire team understands the true project status
- Helping teams **respond to the unexpected** in a timely manner ensuring the team stays on schedule



Test your real-time planning capabilities

Can your team...

- Plan across the entire team?
- Plan for waterfall, iterative and agile environments?
- Integrate planning with execution?
- Instantly see the impact of a change in project scope or resources?



Criteria for effective lifecycle management: 5 ALM imperatives

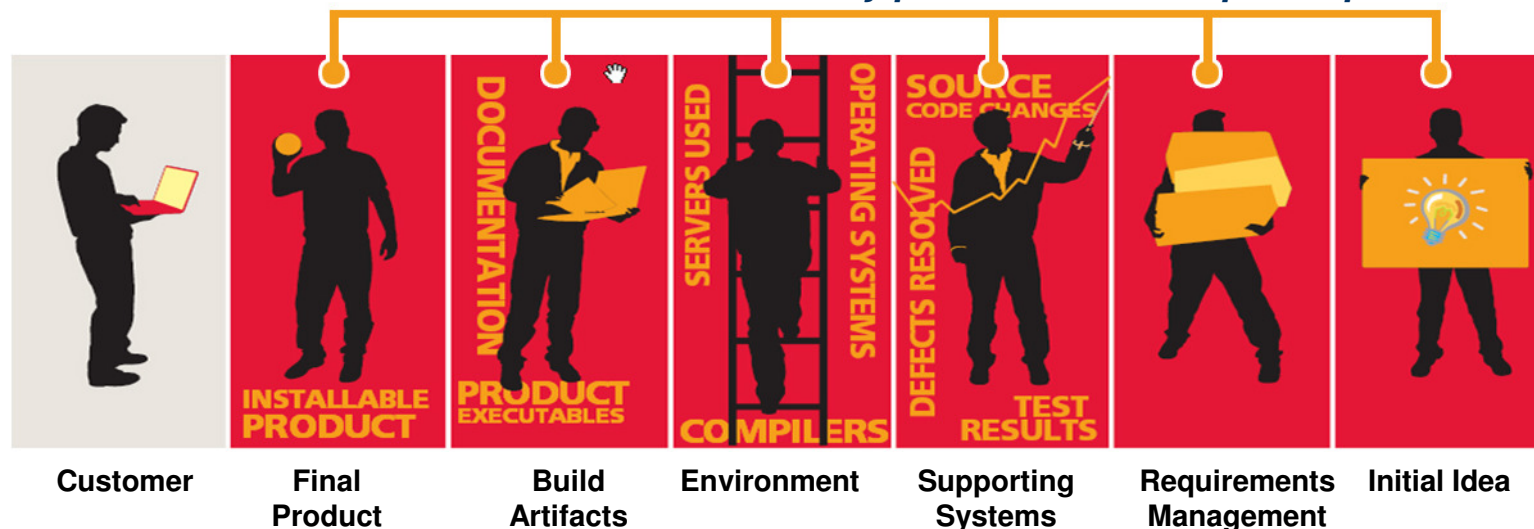
1. Real-time planning
2. **Lifecycle traceability**
3. In-Context collaboration
4. Development intelligence
5. Continuous improvement

What is Lifecycle Traceability?

Lifecycle Traceability improves quality by:

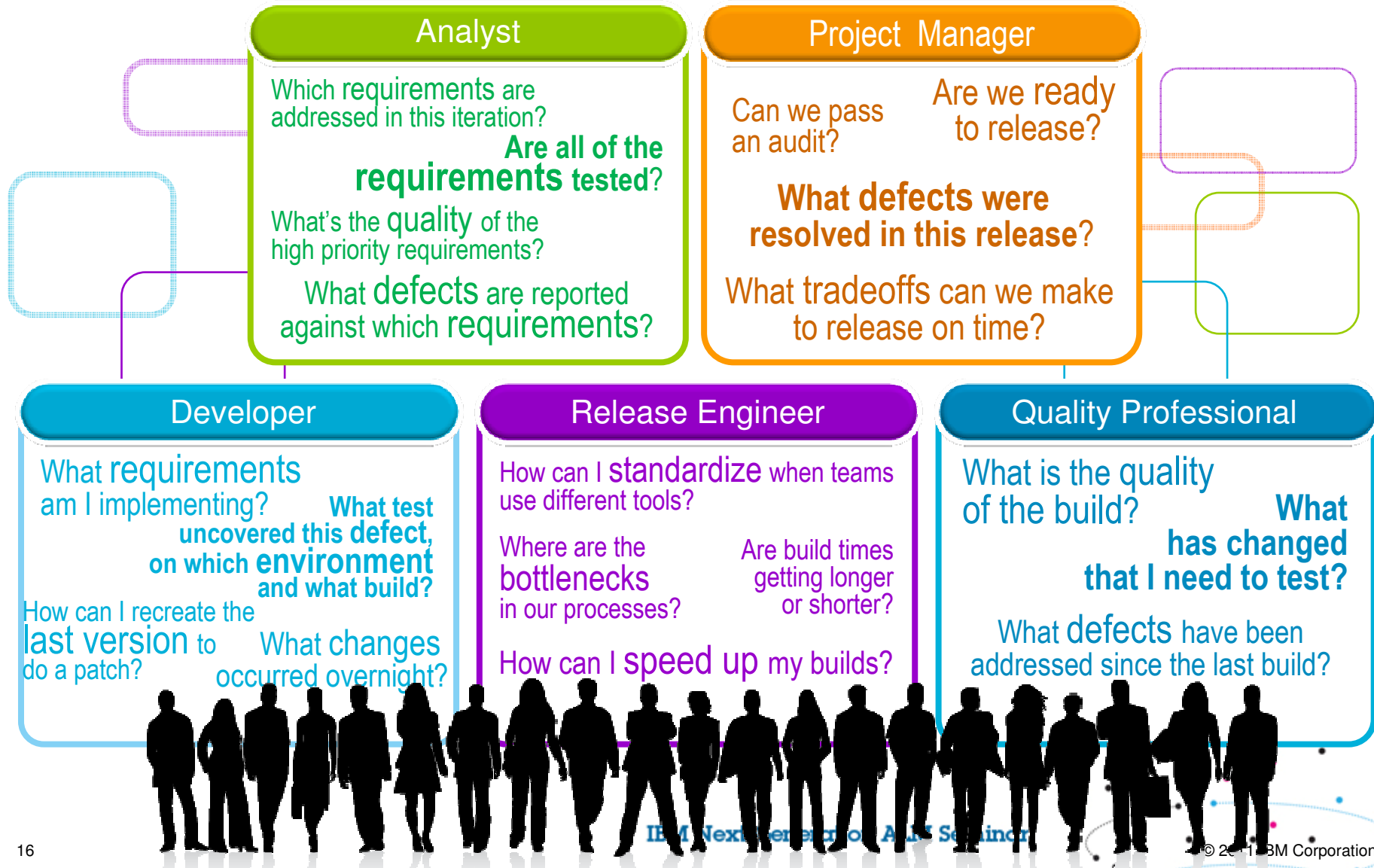
- Establishing **relationships between software artifacts**
- Helping you **identify and close artifact gaps**, ensuring **coverage** across disciplines
- Provides visibility into the **completeness** of planned items by inspecting all related artifacts
- Provides easy **access to related artifacts** ensuring everyone shares the same view
- Delivers transparency which enables everyone to make **fully informed decisions** based business priorities

Instant access to details from any point in the development process



Test your lifecycle traceability capabilities

Can your team answer these questions...



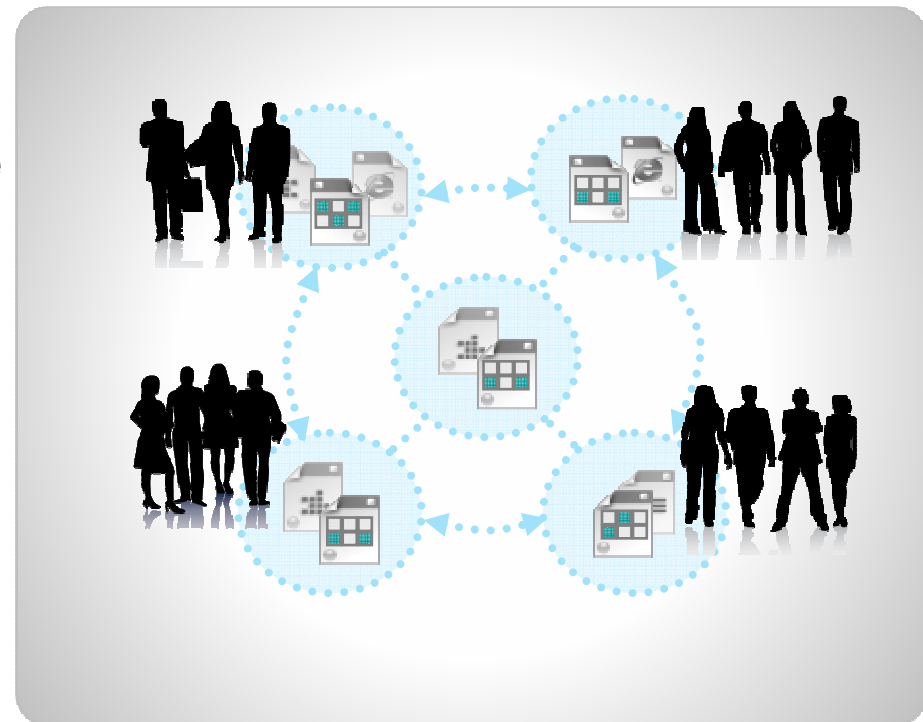
Criteria for effective lifecycle management: 5 ALM imperatives

1. Real-time planning
2. Lifecycle traceability
- 3. In-Context collaboration**
4. Development intelligence
5. Continuous improvement

What is In-Context Collaboration?

In-Context Collaboration improves product value by:

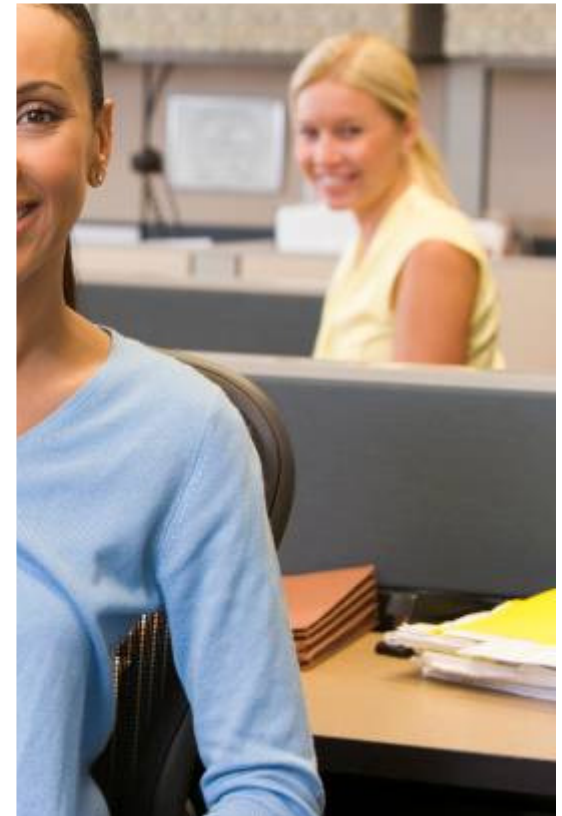
- Making **information immediately accessible** to all team members in the context of their work
- Empowering teams to collaborate on and review software development artifacts so they can **incorporate feedback early and often**
- Providing **single source of truth** hosted in a shared repository so that team members can collaborate effectively around the globe



Test your In-Context Collaboration capabilities

Can your team...

- Easily access the “single source of the truth” through linked artifacts?
- Quickly grasp the “who, what, when and why” of team activities?
- Bring new team members up-to-speed quickly?
- Overcome the barriers of multiple time zones when working with outsourced and distributed team members?



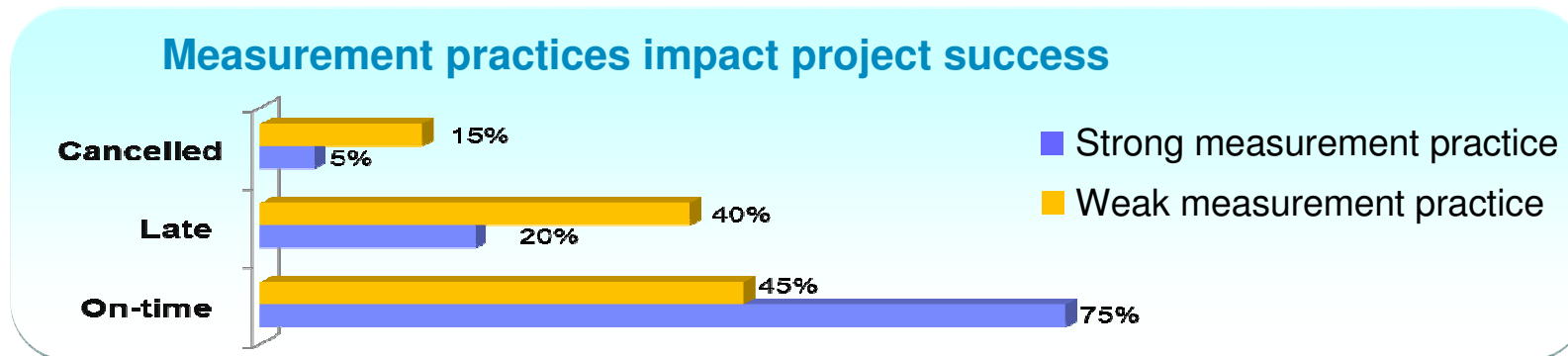
Criteria for effective lifecycle management: 5 ALM imperatives

1. Real-time planning
2. Lifecycle traceability
3. In-Context collaboration
4. **Development intelligence**
5. Continuous improvement

What is Development Intelligence?

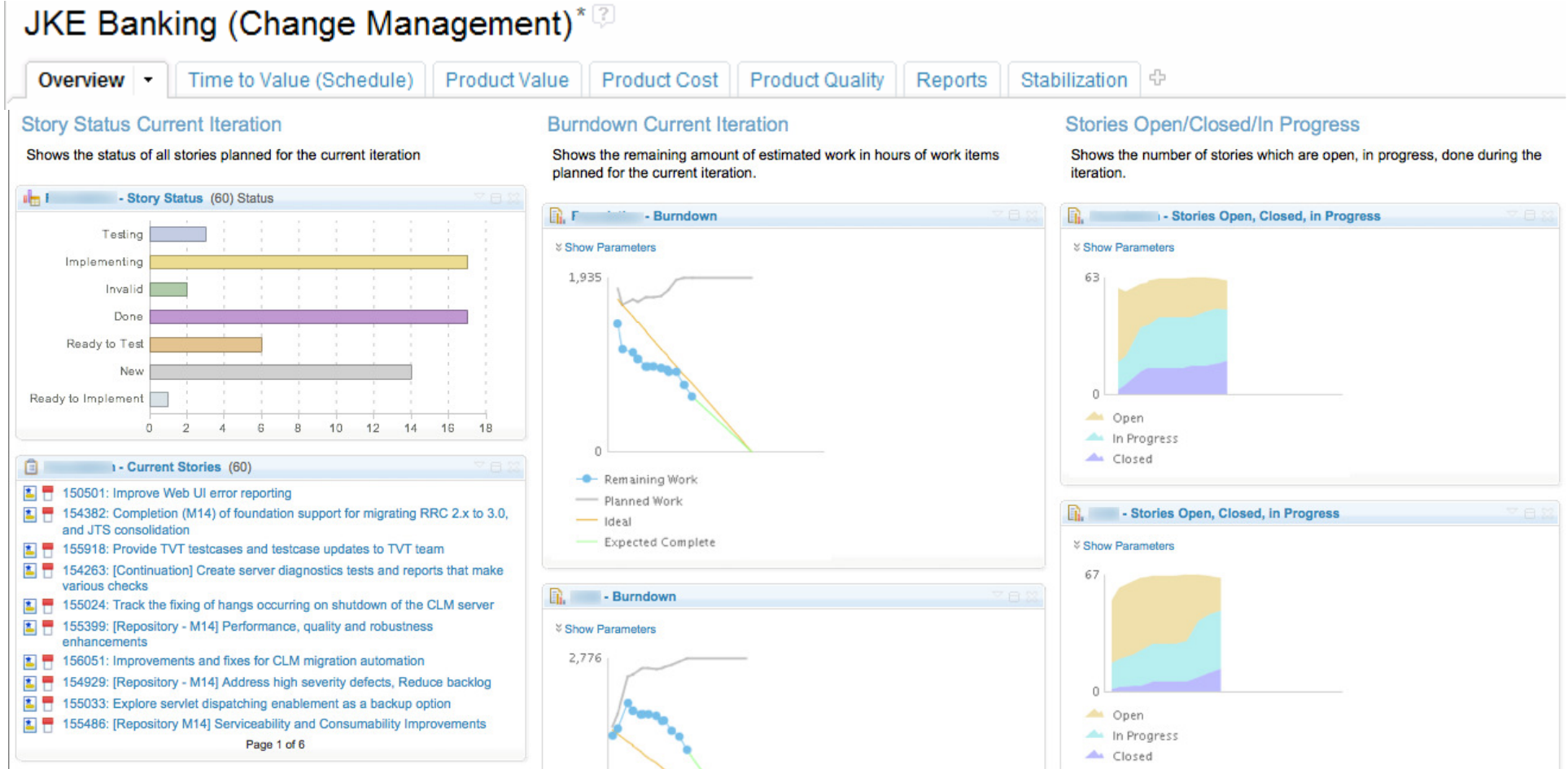
Development Intelligence improves predictability by:

- Applying **Business Intelligence techniques** to software and systems development
- Enabling **fact-based decision making** (to communicate status, monitor progress, diagnose problems, identify corrective actions)
- **Steering projects and programs** to deliver on-time



Source: Capers Jones, *Measurement, Metrics and Industry Leadership*, 2009 and *Software Engineering Best Practices*, McGraw Hill, 2010.

Use dashboards to provide that 1 view of project health



Test your lifecycle intelligence

Can your team...

- **Time-to-Value**
 - Produce the right capabilities according to the committed schedule?
- **Product Value**
 - Deliver a valuable product?
- **Product Cost**
 - Measure what we spending to deliver the system?
- **Product Quality**
 - Build a high quality system?
- **Predictability**
 - Manage the risk and uncertainty?



Criteria for effective lifecycle management: 5 ALM imperatives

1. Real-time planning
2. Lifecycle traceability
3. In-Context collaboration
4. Development intelligence
5. **Continuous improvement**

What is Continuous Improvement?

Continuous Improvement reduces cost by:

- Improving software delivery through the ongoing **adoption of best practices and automation** to reduce manual, non-creative and error prone tasks
- Promoting **incremental improvement of a project** when needed
- Enabling breakthrough improvement by **capturing best practices and reusing** across teams
- Allowing **everyone to participate** with easy to adopt best practices at your fingertips.

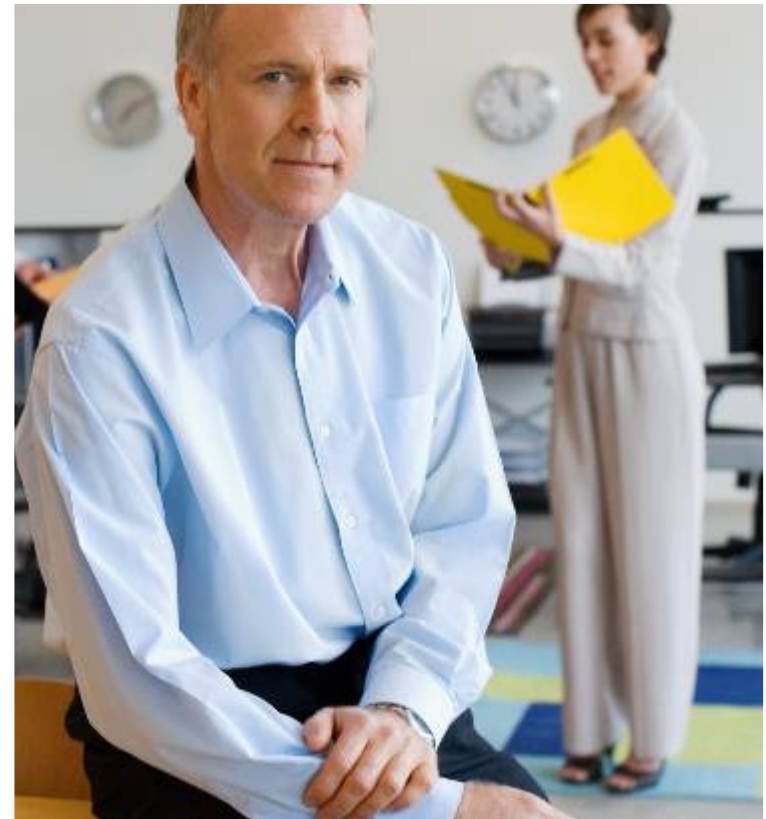
“Successful analytics requires taking it beyond software and reporting, and into the realm of management practices and operations improvement”
Information Management Online, February 23, 2011




Test your Continuous Improvement capabilities

Can your team...

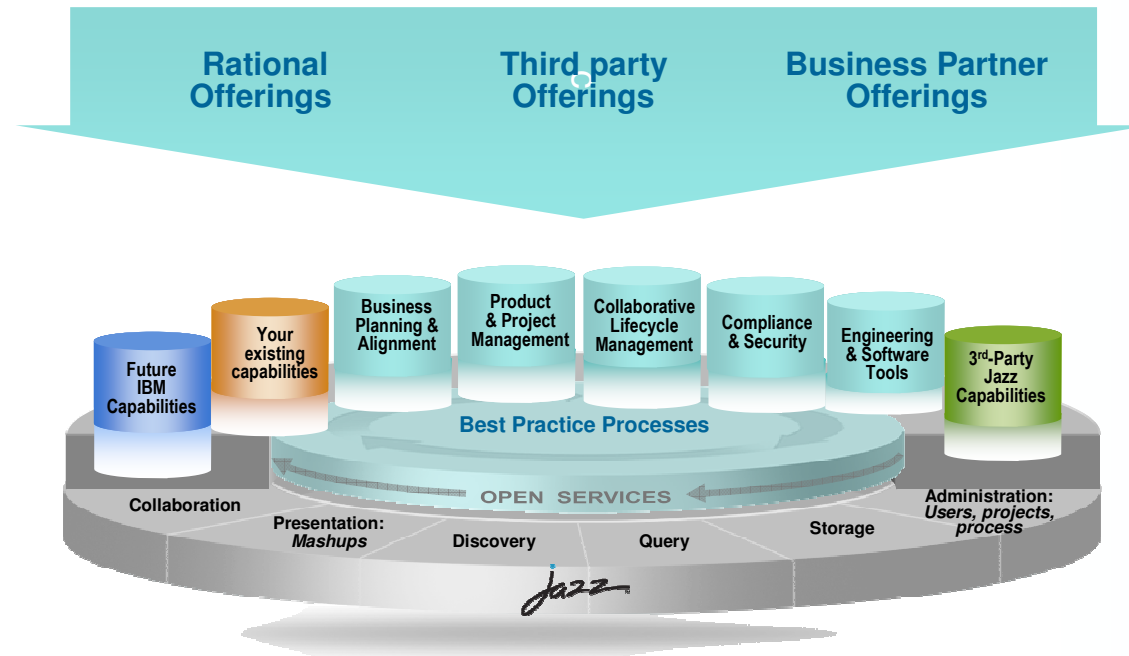
- Leverage out-of-the-box process templates for traditional and agile workflows?
- Change process “on the fly” as part of a continuous feedback loop?
- Allow team leads to determine how strict or lax the “rules of the road” should be?
- Modify process enforcement over the life of a project, to encourage early-stage experimentation and end-game stability?



Agenda

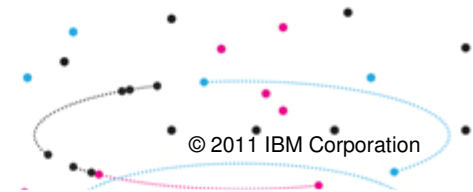
- 
- 1 Introduction and current market situation
 - 2 Delivering the 5 ALM imperatives
 - 3 IBM Rational Application Lifecycle Management**
 - 4 Proven results

Jazz is a platform for transforming software delivery



Jazz is...

- Our vision of the future of systems and software delivery
- A scalable, extensible team collaboration platform
- An integration architecture enabling mashups and non-Jazz products to participate
- A community at Jazz.net where Jazz products are built
- An evolution of our portfolio over time

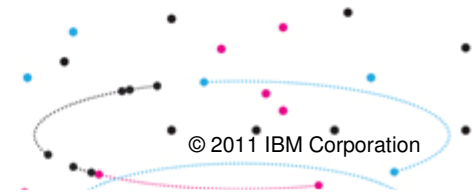


Rational Next Generation Application Lifecycle Management



Jazz is...

- Our vision of the future of systems and software delivery
- A scalable, extensible team collaboration platform
- An integration architecture enabling mashups and non-Jazz products to participate
- A community at Jazz.net where Jazz products are built
- An evolution of our portfolio over time





Open Services for Lifecycle Collaboration (OSLC)

An initiative aimed at simplifying data linking and tool integration across the lifecycle

Open Services for Lifecycle Collaboration

Barriers to sharing resources and assets among tools

- ▶ Multiple vendors, open source projects, and in-house tools
- ▶ Private vocabularies, formats and stores
- ▶ Entanglement of tools with their data

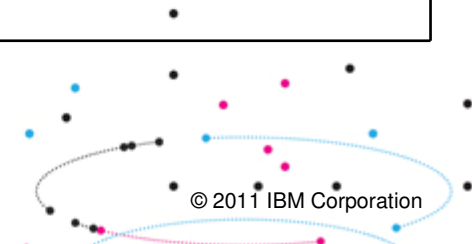
- ▶ Community Driven – specified at **open-services.net**
- ▶ Specifications for ALM, PLM and DevOps Interoperability
- ▶ Inspired by Internet architecture
 - Loosely coupled integration with “just enough” standardization
 - Common resource formats and services
- ▶ A different approach to industry-wide proliferation

Learn more at: <http://open-services.net/>




Achieve break through benefits with IBM's ALM platform

Advantages over other approaches	
OpenSource and point vendors	IBM provides an integrated lifecycle solution that enables cross-vendor integration unlike the vendors in this category
Vendors that integrate aspects of design, development & deployment, but not the whole lifecycle	IBM enables the integration and transparency needed across the full lifecycle unlike other vendors in this category
Vendors promoting comprehensive application and systems lifecycle solutions	IBM offers an open, standards-based platform unlike vendors in this category. IBM also enables business planning and alignment



Agenda

- 
- 1 Introduction and current market situation
 - 2 Delivering the 5 ALM imperatives
 - 3 IBM Rational Application Lifecycle Management
 - 4 **Proven results**



Application Lifecycle Management @ IBM

57,000+ total resources worldwide

Pittsburg
Poughkeepsie
Princeton
Somers
Southbury
NY, NY

Andover
Bedford, MA
Bedford, NH
Lexington
Westborough
Westford Cambridge

Cork
Dublin
Galway

London/Staines
Milton Keynes
Hursley
Warwick
York

Canada
Toronto
Montreal

- Over 200 Rational development projects (~3000 users) using Rational Team Concert
- More than 250 other projects around IBM
 - ▶ For example – GBS Application Factory (AF) team currently hosting 5000+ users
- Boarding time for new projects - less than one day
- Applicable to agile/iterative and waterfall projects

- Rational Development
- Rational Customer Support
- WebSphere Development
- Lotus Development
- Tivoli Development
- IBM Research Division
- IBM Global Business Services

Beaver
Kirkland
Seattle
Foster City
San Francisco
SVL/San Jose
Almaden
Agoura Hills
El Segundo
Costa Mesa
Las Vegas

Rochester
Boulder
Denver
Lenexa,KA
Tucson
Pheonix
Austin
Dallas

Tampa

Sao Paulo

Gurgaon

Perth

Gold Coast
Sydney
Canberra

El Salto

Realised Customer results – 5 ALM imperatives
From our region and across the globe

1. Accelerate time to delivery with Real-time Planning

- *GM reduced time to market, delivering new model cars to market in only 29 months*



Realised Customer results – 5 ALM imperatives
From our region and across the globe



2. Improve quality with Lifecycle Traceability

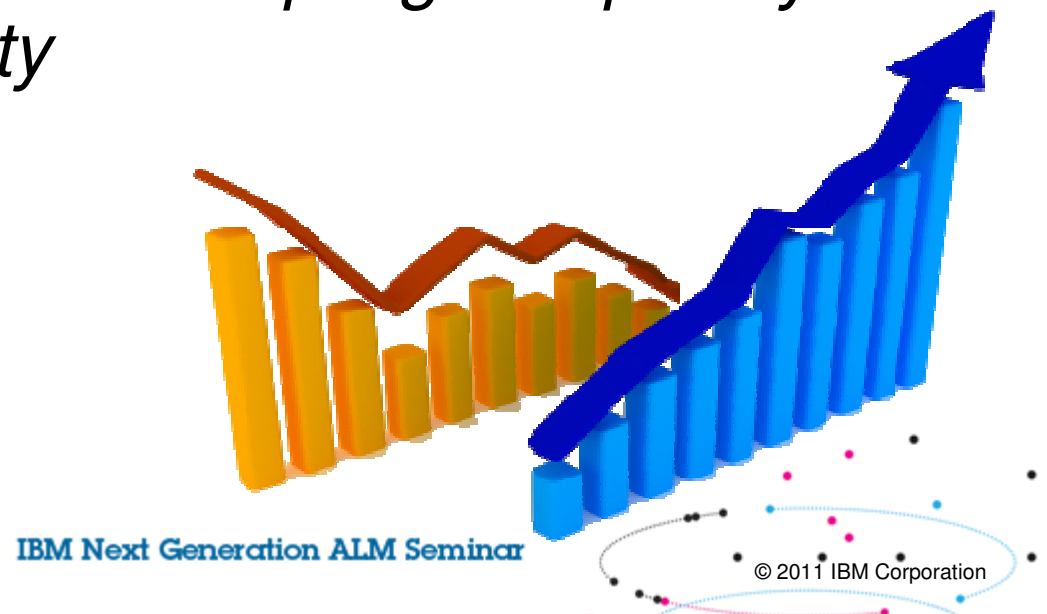
- *Nationwide is delivering innovative services in 1/3 the time and cost*



Realised Customer results – 5 ALM imperatives
From our region and across the globe

3. Maximise product value with In-Context Collaboration

- *A medium sized insurance company in Australia reduced headcount while tripling complexity and doubling productivity*



Realised Customer results – 5 ALM imperatives continued..
From our region and across the globe

4. Refine predictability with Development Intelligence

- *Danske Bank cuts time to market by 50%*

Danske Bank

“Rational Team Concert software is the backbone of Danske Bank’s agile development process and is adjusted to the special needs of the bank. Besides, we expect that Rational Team Concert will also support the waterfall methods in the longer term,” Peter Rasmussen, senior vice president, IT development processes and tools, Danske Bank Group

Realised Customer results – 5 ALM imperatives continued..
From our region and across the globe

5. Reduce costs with Continuous Improvement

- *ANZ Bank is reducing test cycles by 30% and deployment cycles by 50%*
- *Saving millions each year*



Gartner MarketScope for Application Life Cycle Management

IBM Rational earns “Strong Positive” – the highest possible rating

MarketScope for Application Life Cycle Management

Gartner RAS Core Research Note G00208572, Jim Duggan, Thomas E. Murphy, 11 November 2010

Rational software

Efficient coordination and automation of the delivery process **requires new, collaborative approaches** to the planning, measurement, execution, control and reporting of activities.

These **new approaches are what differentiate current application life cycle management (ALM) tools**, and what make ALM processes vital to leading-edge development activities.

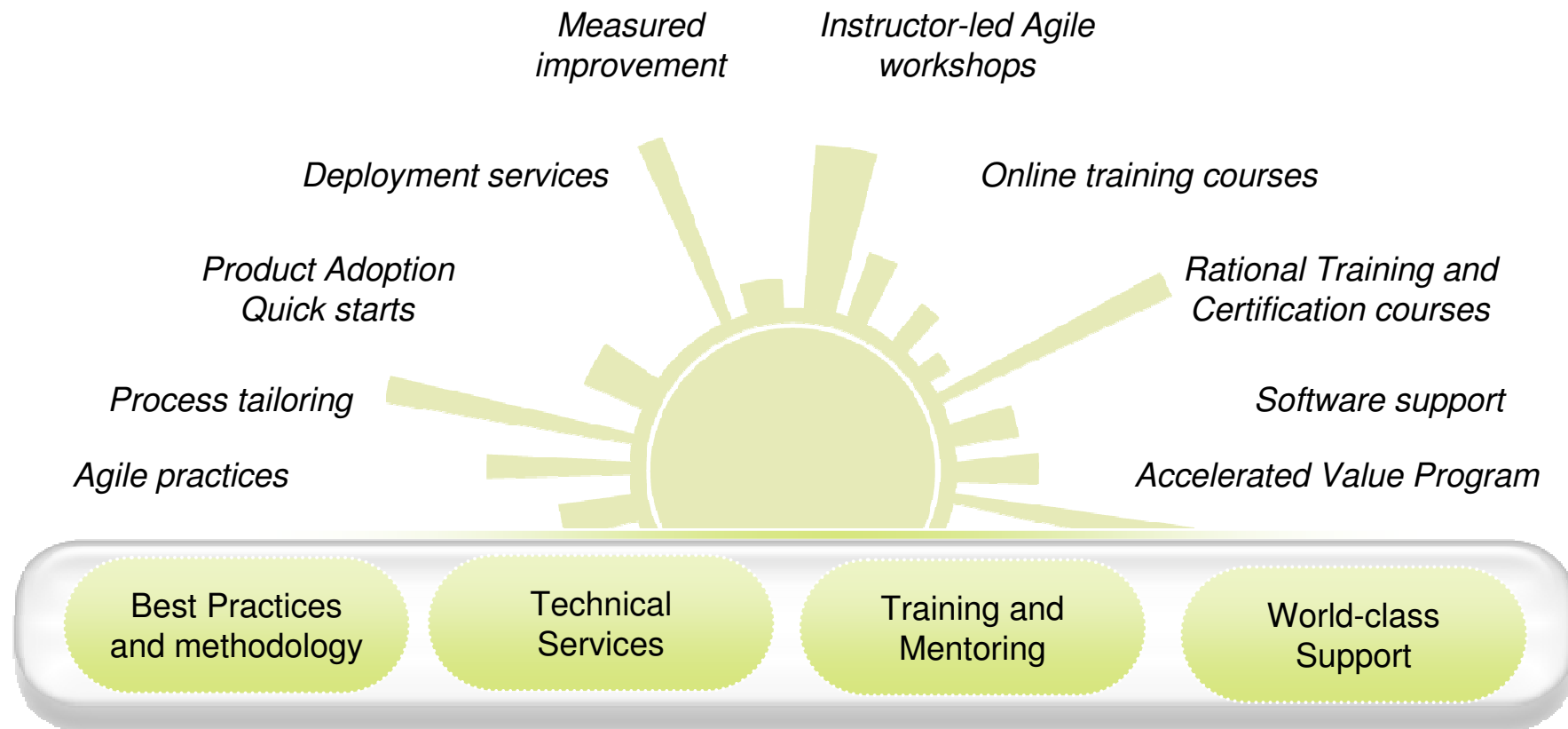
ALM is what **enables sustainable agile practices**. ALM creates a management framework providing consistent, auditable records of the decisions and activities of agile teams.

	RATING				
	Strong Negative	Caution	Promising	Positive	Strong Positive
AccuRev			X		
Aldon			X		
Atlassian				X	
CollabNet				X	
Digite			X		
HP				X	
IBM					X
Kovair			X		
Micro Focus			X		
Microsoft				X	
MKS				X	
Parasoft			X		
Polarian Software			X		
Rally Software				X	
Seapine Software			X		
Serena Software				X	
SmartBear Software			X		
TechExcel			X		
ThoughtWorks			X		
VersionOne				X	

As of 11 November 2010

The MarketScope is copyrighted November 11, 2010 by Gartner, Inc. and is reused with permission. The MarketScope is an evaluation of a marketplace at and for a specific time period. It depicts Gartner's analysis of how certain vendors measure against criteria for that marketplace, as defined by Gartner. Gartner does not endorse any vendor, product or service depicted in the MarketScope, and does not advise technology users to select only those vendors with the highest rating. Gartner disclaims all warranties, express or implied, with respect to this research, including any warranties of merchantability or fitness for a particular purpose. The MarketScope graphic was published by Gartner, Inc. as part of a larger research note and should be evaluated in the context of the entire report. The Gartner report is available upon request from IBM.

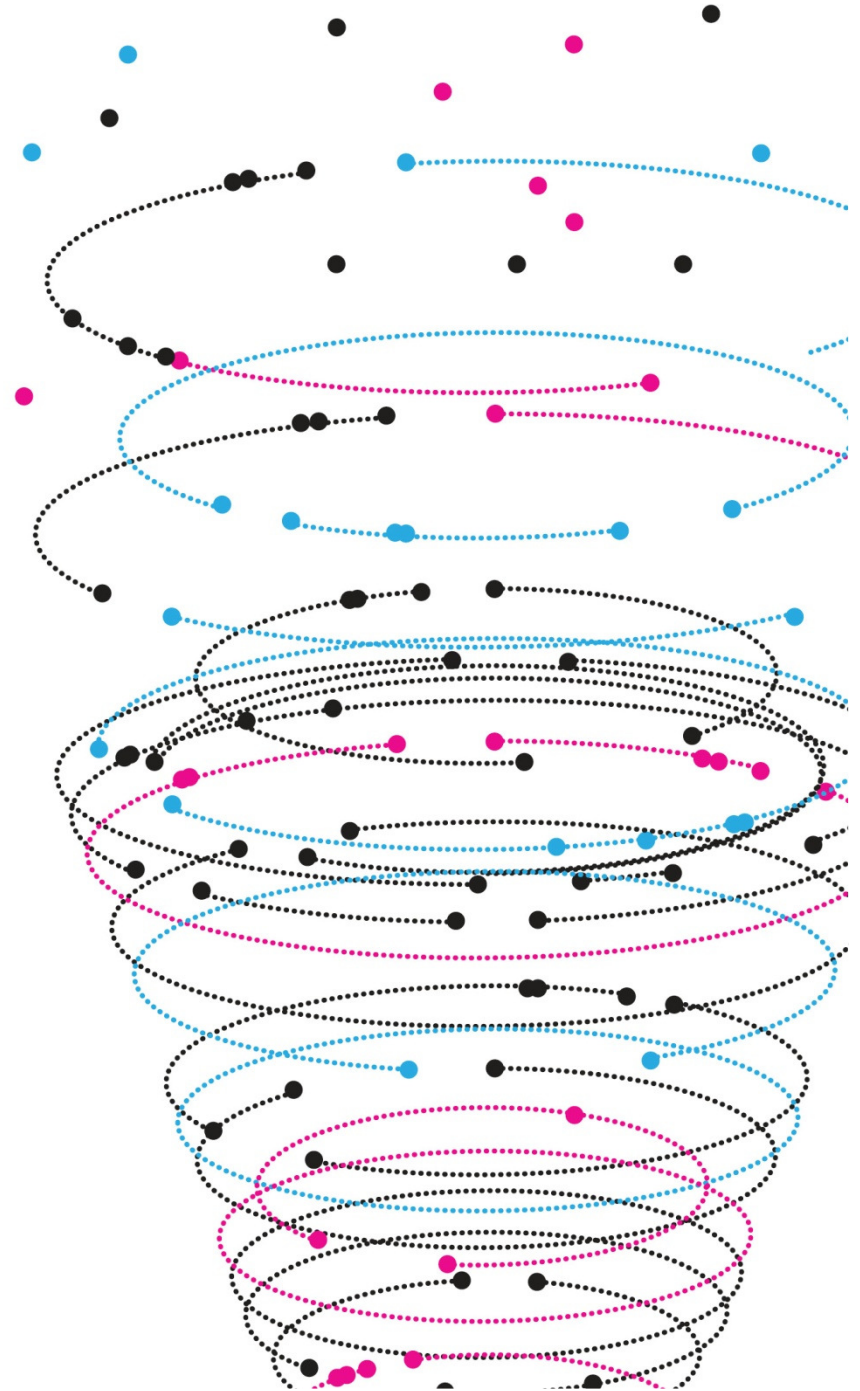
Ensure Success with IBM Rational Application Lifecycle Management





IBM Next Generation ALM Seminar

Please take a few minutes to complete the evaluation form and return it at the registration table to receive your **complimentary gift**





Smarter software for a smarter planet:

Take the fast track to better software delivery

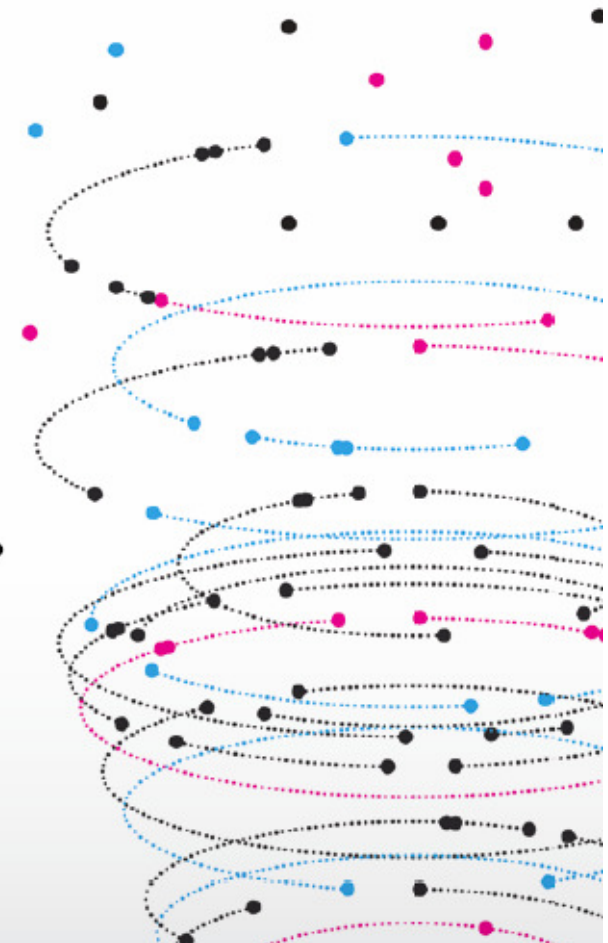
Join us for a hands-on ALM workshop led by IBM's expert technical team

Don't miss this opportunity to test drive the next generation of IBM's Application Lifecycle Management (ALM) solutions. During this complimentary hands-on workshop, IBM's expert technical team will demonstrate the features and functionality of the IBM® Rational® suite.



Perth

Wednesday, 30 May 2012
Cliftons
191 St Georges Terrace
Perth WA 6000





www.ibm.com/software/rational

© Copyright IBM Corporation 2011. All rights reserved. The information contained in these materials is provided for informational purposes only, and is provided AS IS without warranty of any kind, express or implied. IBM shall not be responsible for any damages arising out of the use of, or otherwise related to, these materials. Nothing contained in these materials is intended to, nor shall have the effect of, creating any warranties or representations from IBM or its suppliers or licensors, or altering the terms and conditions of the applicable license agreement governing the use of IBM software. References in these materials to IBM products, programs, or services do not imply that they will be available in all countries in which IBM operates. Product release dates and/or capabilities referenced in these materials may change at any time at IBM's sole discretion based on market opportunities or other factors, and are not intended to be a commitment to future product or feature availability in any way. IBM, the IBM logo, Rational, the Rational logo, Telelogic, the Telelogic logo, and other IBM products and services are trademarks of the International Business Machines Corporation, in the United States, other countries or both. Other company, product, or service names may be trademarks or service marks of others.

