

Software

*Your complete line of solutions for
Windows, UNIX, Linux and OS/2.*



CATALOGUE

Australia/New Zealand 2004



DB2 Information
Management
Software



Lotus software

Collaboration



Rational software

Software development



Tivoli software

Automation



WebSphere software

Integration

visit ibm.com/software/nz/catalogue or ibm.com/software/au/catalogue



Welcome to a whole new era. Introducing e-business on demand.

We are entering a new era in business – the on demand era. An era in which everyone will demand that you're more responsive, more flexible, more resilient than ever before.

e-business on demand is not just a vision, nor is it new. It is a statement of IBM's belief of how businesses will need to transform themselves to be successful. Businesses will have to adapt to cope with ever increasing pressures from competition and other factors associated with the global economy. This implies a transformation to a fully integrated business across people, processes and information, including suppliers and distributors, customers and employees.

IBM defines an on demand business as an enterprise whose business processes can respond with speed to any customer demand, market opportunity or external threat. For a business to successfully attain and maintain these attributes, it must build an IT infrastructure that is designed to specifically support the business goals. We call this infrastructure the on demand operating environment.

The IBM on demand operating environment is the end-to-end enabling IT infrastructure that can allow a business to execute IT operations that align with its business strategy.

On demand solution offerings can be categorised to address three main capabilities:

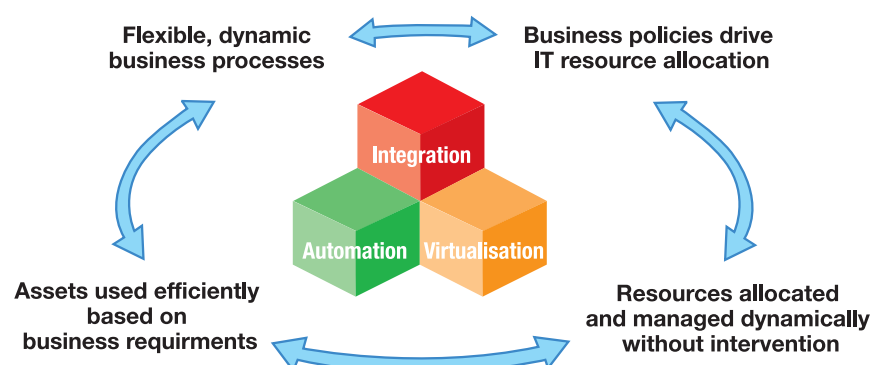
Integration creates business flexibility and collaboration between people, processes and information by combining disparate, unconnected data, applications and processes.

Virtualisation improves the utilisation of your IT, information and people assets because it allows you to treat resources as a single pool, accessing and managing those resources across your organisation more efficiently, by effect and need rather than physical location.

Automation improves availability and resiliency, while reducing the complexities of managing IT and lowering IT management costs, based on the policies you set for your business.

It's a new era in business. And in this new era, you will demand partners with the vision to foresee where the world is going – and the resources to help you make sure that your ideas will deliver the results you expect. A partner, in other words, like IBM software.

IBM on demand operating environment delivers unique value



in New Zealand visit

ibm.com/software/nz/catalogue

call

0800 801 800



IBM's e-business software is the indispensable glue that unites hundreds of systems and software applications, and enables seamless integration across the business through open standards.



Information Management Software - DB2

DB2 Information Management Software helps you manage information by collecting, analysing and distributing data securely. It also enables mining that data to gain knowledge and insight, make better decisions, and gain competitive advantage.



Collaboration - Lotus

Lotus software helps you tap into the 'know-how' within your organisation, with your suppliers and your customers. Lotus messaging and collaboration solutions enable you to communicate, collaborate and share knowledge.



Software Development - Rational

Rational tools improve both individual and team capability. You can choose the development environment and IDE that's right for your team, work at the level of abstraction that's right for each activity and tailor your project environment to meet your specific needs.



Automation - Tivoli

Tivoli software helps you manage, integrate and automate e-business infrastructures. It addresses the critical issues of Web security, storage management and pervasive computing, increasing efficiency and effectiveness of your IT resources.



Integration - WebSphere

WebSphere software is about integration. It helps you extend key applications to the Web. By integrating internal and external processes, you can accelerate e-business initiatives for your customers, suppliers, partners and employees.

in Australia visit

ibm.com/software/au/catalogue

call

1300 880 150

IBM Global Financing

Software financing is becoming increasingly popular because you can acquire IBM and associated Business Partner software, hardware and services. Software financing is one of the fastest growing segments of the IT financing market for the following reasons:

1. Match cost to benefits

The costs associated with software acquisitions are heaviest at the front end, while benefits do not fully accrue until the project is implemented. When the project is financed and structured according to your business requirements, costs and benefits can be aligned more closely.

2. Bring investments forward

Using your cash flow rather than your capital allows you to invest now for business advantage and conserve your capital for higher yielding core business investments.

3. Total Cost of Ownership

Organisations that engage a financing partner for the total solution are more likely to achieve faster return on investment and greater long-term economies.

IBM is one of the world's largest information technology financiers. IBM Global Financing offers customers in more than 40 countries leasing and financing solutions for hardware, software and services acquired from IBM and other vendors. Talk to us today to see how we can help you reap the above rewards.

Call 132 426 in Australia or 0800 801 800 in New Zealand and ask for IBM Global Financing

Visit ibm.com/financing/au or ibm.com/financing/nz

Finance IT with IBM Global Financing

Everything you need – fast!

Backed by IBM

Every IBM product in this catalogue is backed by an IBM Limited Warranty. See the IBM Limited Warranty for full details and limitations. Non-IBM products are provided on an 'as is' basis, but may be covered by the appropriate manufacturer's warranty.

Questions? We're always ready to help.

Our Software Sales Specialists are just a phone call away with the latest product information, pre-sales advice and order placement assistance. Just call **1300 880 150 in Australia or 0800 801 800 in New Zealand** with any questions you may have about our products and services. We'll help you select and configure the right solutions for your needs!

Volume licencing

IBM offers substantial discounts for volume licencing on selected products. IBM's volume licencing program includes 24x7 telephone support for those mission critical installations, and ongoing software updates for the duration of your maintenance contract. Call one of our skilled Software Volume Licencing Specialists on **1300 880 150 in Australia or 0800 801 800 in New Zealand**.

Electronic Software Download

IBM offers immediate access to selected software via ESD – Electronic Software Download. Digital delivery provides you the ability to download and install new releases or upgrades for products covered by software maintenance. You don't have to wait for media delivery or keep track of CD's. Simply download your entitled media from the Passport Advantage customer site – ibm.com/software/passportadvantage – whenever you need it.

Contents

It's easy to order with IBM

Phone

Call **1300 880 150 in Australia or 0800 801 800 in New Zealand** (Monday-Friday 9am-5pm) and you'll be connected to **ibm.com** where you can choose to be connected to an IBM Software Specialist.

Online Catalogue

For the latest product versions and new product release details please go to our website **ibm.com/software/au/catalogue** or **ibm.com/software/nz/catalogue**. Watch these sites as we introduce online pricing information and product specials.

Local IBM Representative

Your local IBM Sales team will continue to support you with any IBM product you select from this catalogue. For the sales representative nearest you, call **1300 880 150 in Australia or 0800 801 800 in New Zealand**.

Your IBM Business Partner

You may find it convenient to order your catalogue products through your IBM Business Partner. Their knowledge of your organisation and its current computing environment may help you quickly select and install the best IBM products for your needs.

Passport Advantage

Passport Advantage is IBM's comprehensive software licensing and software maintenance program that saves organisations money at every stage of software acquisition and use, everywhere in the world. Passport Advantage is the most flexible and cost-effective way for organisations to reap the benefits of volume pricing for new software, new releases of the latest technology, and technical support to keep businesses up and running. It can help lower acquisition and administrative costs, facilitate migration to new platforms, boost productivity and increase profits.

For more information visit:

ibm.com/software/passportadvantage

Or call 132 426 in Australia or 0800 801 800 in New Zealand and ask for Passport Advantage.



New

Newly announced product or model



Product Update

Recently updated product



Digital Delivery

Available online via Passport

8 DB2

22 WebSphere

51 Rational

53 Lotus

58 Tivoli

66 Index

Cross-platform compatibility

Now, in just a single glance, you can discover which software runs on which platforms. Simply refer to the alphanumeric codes.

AIX	= AIX*
DOS	= DOS
HP-UX	= HP-UNIX**
LNx	= Linux**
MAC	= Macintosh**
MAC X	= Macintosh X**
NET	= NetWare**
NUMA-Q	= NUMA-Q*
OS2	= OS/2* OS/2 Warp* OS/2 Warp Server
SCO	= SCO
SUN	= Sun Solaris**
WMe	= Windows** Millennium Edition
WNT	= Windows NT**
W2000	= Windows 2000
W31	= Windows 3.1 and higher
W3x	= All Windows 3x software
W95	= Windows 95
W98	= Windows 98
W9x	= All Windows 9x software
UNIX	= UNIX**

Express - software designed just for you.



What are Express solutions?

Built to meet the needs of medium-sized businesses, IBM Express solutions deliver broad functionality for a reasonable investment. Express offerings provide:

- *Accessible entry point to e-business*
- *Easy, installation and deployment*
- *Minimum administration*
- *Modular design for growth*
- *Integration with existing technology*



WebSphere software

WebSphere Commerce-Express

On the Web your customers expect an outstanding e-commerce experience regardless of your company size. This solution is your affordable on-ramp to e-commerce. It can be installed so you're ready to build your store in as little as one hour, keeping your upfront costs under control. Start with just the e-commerce basics and grow into more advanced capabilities, already built-in, according to your own timetable.

WebSphere MQ-Express

WebSphere MQ - Express is designed to make it easy to connect a variety of different applications together so you can efficiently share critical data across your IT infrastructure. Don't spend a lot of time creating custom code to connect different applications together. Integrate any of the hundreds of MQ-enabled applications without any complex coding.

in New Zealand visit

ibm.com/software/nz/catalogue

call

0800 801 800



WebSphere Application Server – Express

An approachable kick-start for e-business, this software allows you to develop and deploy dynamic Web sites quickly with samples, wizards and templates helping you to streamline business processes.

WebSphere Portal – Express

Now you can leverage sophisticated portal capabilities at a modest price to tap business-to-employee, business-to-business and business-to-consumer opportunities. This solution makes it easy to extend your sales channel to the Web quickly and delivers a single point of personalised interaction between applications, content, processes and people.

WebSphere Business Connection – Express

WebSphere Business Connection Express enables you to connect economically to trading partners, public and private marketplaces. It facilitates partner integration needs across industries, addressing key business drivers such as collaboration design, supply chain automation, e-markets and e-procurement.

For more information about IBM WebSphere Express offerings visit ibm.com/websphere/express



Lotus® software

Lotus Domino Collaboration – Express

Take advantage of industry-leading instant messaging, collaboration, online meetings and group calendaring tools with licensing and pricing designed for your growing business. IBM Lotus Domino Collaboration – Express fits smoothly into your existing infrastructure giving you more value from current technology investments.

Lotus Domino Utility Server – Express

Now you can leverage unlimited access to collaborative applications based on IBM Lotus Domino using either a Web browser or your separately purchased Lotus Notes client. IBM Lotus Domino Utility Server – Express offers hundreds of off-the-shelf or custom collaboration applications to fit the needs of your organisation.

For more information about Lotus Express offerings visit ibm.com/lotus/dominoexpress



Tivoli® software

Tivoli Storage Resource Manager – Express

This cost-effective solution helps you achieve optimised operational value from your storage environment. Manage storage capacity, availability, security events, performance and resources from clients to servers. Installation can be completed in less than 30 minutes and out-of-the-box storage and security functionality includes 300 ready-to-use reports.

For more information about Tivoli Express offerings visit ibm.com/software/tivoli/products/storage-resource-mgr-ee



DB2® Information Management Software

IBM DB2 Universal Database – Express

This solution answers your need for an advanced cross-organisational data repository while addressing limited IT resources and lean budgets. DB2 Express features self-tuning and self-configuring elements that reduce complexity, increase reliability and improve upon overall total cost of ownership for your databases. Based on industry standards and running on Windows and Linux operating systems, you can leverage current infrastructure investments and avoid being locked into one vendor.

For more information about DB2 Express offerings visit ibm.com/software/data/info/db2express

*Leverage all your information across your e-infrastructure***DB2 Universal Database**

WS2003 WNT W2000 W98 W95 LNX AIX HP-UX SUN

- **Provides innovative self-managing and self-tuning capabilities, dramatically reducing the time and costs associated with managing database systems**
- **Delivers industry leading support for Federated Web Services and XML**
- **Delivers advance business intelligence support through Mutli-Dimensional Clustering (MDC) capability**
- **Includes a Development Center with tools to improve developer productivity in both Java and Microsoft environments**
- **Offers a new Express Edition with a low entry cost and simplified deployment.**

IBM DB2 Universal Database V8.1 allows you to access any information, from any application, from any place in your organization anytime, and still at the total lowest cost of ownership in the industry.

This newest release provides new and significant automation capabilities through SMART (self-managing and resource tuning) Business Intelligence enhancements, and expanded abilities to integrate information across your company.

Innovative Manageability

DB2 greatly reduces the complexity of data management by eliminating, simplifying, and automating many tasks. These advances are the first step towards autonomic computing, and include:

- Configuration Advisor that provides the knowledge of a seasoned DBA
- New Health Center/Monitor that keeps the DB2 database functioning
- Memory Visualizer to dynamically see and control DB2's memory usage
- Advisors to deliver expert advice on index and materialized query tables
- Simplified management of large scale partitioned databases

New Levels of Integrated Information

DB2 enables you to share, understand, and utilize your data in new and exciting ways. Two key enhancements deliver improved integration:

- Federated Web Services allow consolidation of information from web service providers
- XML productivity tools automate integration of XML with relational data

**Robust e-business Foundation**

Improvements in the critical areas of scalability, performance, and availability include:

- Connection Concentrator which allows scalability to more users
- Null and default compression that supports more efficient storage of ever-larger amounts of data
- Online operations of key tasks like in-place table reorganization, configuration changes and bulk data loads.

Integrated Business Intelligence

DB2 continues to innovate and integrate key business intelligence technologies to enable users to gain faster insight and ROI from their data. Key advances in this area include:

- New multidimensional data clustering feature that improves the performance of complex queries.

Enhanced Application Development Productivity

DB2 continues its commitment to open standards for application development with a new Development Center that:

- Supports both Java and Microsoft environments
- Operates as a standalone tool or as an integrated component of either the WebSphere Studio Application Developer or Microsoft Visual Studio environment.

Leverage all your information across your e-infrastructure

DB2 Universal Database (cont.)

WS2003 WNT W2000 W98 W95 LNX AIX HP-UX SUN

There are a number of DB2 products to fit specific database requirements:

DB2 Enterprise Server Edition – is designed to meet the database server needs of midsize to large businesses. It can be deployed in Linux, Unix, and Windows server environments on any size system. ESE provides the ideal foundation for building data warehouses, transaction processing, or Web based solutions as well as the backend for packaged solutions like ERP or CRM. Additionally, ESE offers connectivity and integration for other enterprise data sources.

DB2 Database Partitioning Feature – allows Enterprise Server Edition customers to partition a database within a single system or across a cluster of systems.

DB2 Workgroup Server Edition – is the database server designed for deployment in a department or small business environment that involves a small number of internal users. WSE uses a licensing model designed to provide an attractive price point for smaller installations while still providing a full function server. WSE can be deployed in Linux, Unix, or Windows environments on systems with up to 4 CPUs.

DB2 Workgroup Server Unlimited Edition – DB2 Workgroup Server Unlimited Edition offers a simplified per processor licensing model for deployment in a departmental or small business environment that has Internet users or a variable number of users. This edition can be deployed in Linux, UNIX, and Windows environments on systems with up to 4 CPU's.

DB2 Universal Developer's Edition – offers a low cost package for a single application developer to design and build applications for deployment on any of the DB2 client or server platforms. This comprehensive developer's offering includes all client and server DB2 editions, DB2 Connect, the extenders, Warehouse Manager, and Intelligent Miner.

DB2 Personal Developer's Edition – enables a developer to design and build applications that utilize DB2 Personal Edition or DB2 Connect Personal Edition. This offering includes Windows and Linux versions of the Personal Edition products as well as the DB2 Extenders.

DB2 Universal Database Express Edition – is specifically tailored to meet the needs of small and mid-size companies by combining the power, function and reliability of DB2 UDB with new simplicity in packaging, installation and deployment including an option for a silent install from within an application. It offers great affordability with a very low entry cost. Express Edition can be deployed on either Linux or Windows and supports a full range of industry standard application interfaces, including Java, Microsoft's .NET, XML and Web services.

DB2 UDB Data Warehouse Enterprise and Standard Editions – combine DB2 with IBM's leading-edge business intelligence capabilities to deliver everything needed to build and deploy next generation data warehouse solutions. The Standard Edition includes DB2 UDB Workgroup Unlimited Edition, DB2 Cube Views, DB2 Intelligent Miner Modeling, Visualization, and Scoring, and Office Connect Professional Edition. The Enterprise Edition is based on the Enterprise Server Edition of DB2 UDB. In addition to the products listed above, it also includes DB2 Data Partitioning Feature, DB2 Information Integrator Standard Edition, DB2 Query Patroller, and DB2 Warehouse Manager Standard Edition.

For more information - ibm.com/software/data/db2

Enhanced DB2 management products

DB2 Data Management Tools

WNT LNX AIX HP-UX SUN

DB2 Tools for Multiplatforms offer:

- **Facilitate high database performance, availability and data integrity for DB2® Universal Database™ on Linux®, UNIX® and Windows® (LUW) platforms**
- **Provide fast recovery, enhanced performance and easily managed operations**
- **Help reduce database administrative costs and improve DBA productivity**
- **Effect transformation to autonomic, on demand computing.**

IBM DB2 Tools for Multiplatforms are specifically designed to enhance the performance of IBM DB2 Universal Database. The tools support the newest versions of the databases right when they are available, making it easy to migrate from version to version and still get benefit from tools support. IBM Data Management Tools can share data and functions across databases.

This adds up to increased ease-of-use, less training time, and higher productivity for DBAs. The following tools are available:

IBM DB2 Performance Expert for Multiplatforms, Version 1

IBM DB2 Performance Expert for Multiplatforms offers a comprehensive view that consolidates, reports, analyzes and recommends changes on DB2 performance-related information. The tool includes a Performance Warehouse that stores performance data and analysis tools as well as a Buffer Pool Analyzer that collects data and provides reports on related event activity. With online monitoring capabilities, DB2 Performance Expert monitors DB2 Connect™ gateways including application- and system-related information. Building on IBM's autonomic computing and on demand expertise, DB2 Performance Expert also offers recommendations for system tuning to gain optimum throughput. Other capabilities of the tool include:

- Analyzes, controls and tunes performance for DB2 UDB and it's applications
- Provides an online monitor, predefined and customizable reports
- Includes a performance warehouse to store performance related data for further and trend analysis
- A cross-platform tool with offerings for DB2 UDB on Linux, UNIX, and Windows as well as separate offerings for the z/OS (390) environment
- Buffer Pool Analyzer and DB2 Connect Monitoring
- Trace and exception reporting



IBM DB2 Recovery Expert for Multiplatforms, Version 1

DB2 Recovery Expert for Multiplatforms provides targeted, flexible and automated recovery of database assets. Its easy-to-use environment enables even less experienced DBAs to successfully complete highly sophisticated and efficient recovery techniques in minimal time. DB2 Recovery Expert provides intelligent analysis and diagnostics of altered, incorrect or missing database assets including tables, indexes or data. It also automates the process of rebuilding those assets to a correct "point-in-time," often without taking the database or e-business operations offline. Other capabilities of the tool include:

- Rebuilds logical structures of restored objects and dependencies automatically.
- Has the ability to specify the scope of data changes viewed by date, user, table, and other parameters from a graphical user interface.
- Pinpoints data changes with multiple filters, and quickly selects log records for examination.
- Restores dropped objects and related dependencies, even if they no longer exist in the DB2 catalog.
- Automatically maintains the integrity of restored objects and data.
- Supports database assets such as tablespaces, tables, indexes and data in the recovery process.
- Automatically generates SQL for undo/redo processing.
- The mini-log capability allows the DBA to exploit off-line cycles to preprocess log data, reducing the need to backup copy data. This allows recovery routines to focus on single objects and previous states.

Enhanced DB2 management products

DB2 Data Management Tools (cont.)

WNT LNX AIX HP-UX SUN

IBM DB2 High Performance Unload for Multiplatforms, Version 2

An IBM DB2 Tool that helps reduce the maintenance window is DB2 High Performance Unload for Multiplatforms. This product gives customers a fast and efficient tool for unloading and extracting data for movement across the enterprise or for reorganization in-place. It delivers high levels of parallelism and distribution of data across multiple logical and physical partitions and supports DB2 Enterprise Edition/Enterprise Server Edition (SMP) and data that has been distributed across multiple logical and physical nodes on an MPP system (DB2 Enterprise-Extended Edition/Database Partitioning Feature-DPF). Other capabilities of the tool include:

- Performs sequential table reading without DB2 UDB overhead.
- Creates multiple output files during a single unload process.
- Can make the output file-set a tape, disk, or named pipe suitably formatted for optional reorg or reload.
- Can unload selected rows and columns such as every nrow and maximum rows.
- Can unload DB2 UDB table data from multiple database partitions in a single or multiple output streams.
- Optionally unloads data and moves information from a partitioned table to a single file-set for use in another database environment. It supports both command line and DB2 Control Center interfaces.
- Optionally unloads data and moves information from a partitioned table to a single file-set for use in another database environment

IBM DB2 Table Editor for Multiplatforms, Version 4.3

IBM DB2 Table Editor for Multiplatforms quickly and easily accesses, updates and deletes data across multiple DB2 database platforms, including IBM Informix® Dynamic Server 9.x. Through integration with the Control Center, or Web-based interfaces, the tool supports high-function editing with full support for DB2 security and user profiles. In addition to editing raw data, you can create Editing Forms with drag-and-drop graphical user interfaces. Other capabilities of the tool include:

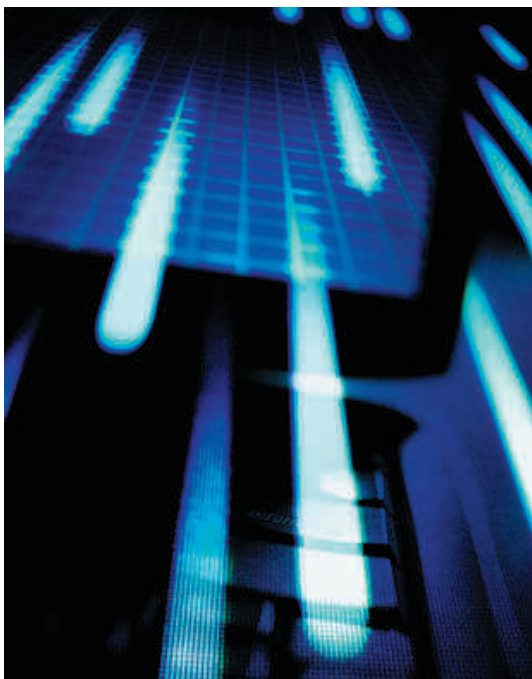
- Provides a full screen table editor (data)
- Offers both Windows and Java front-end applications
- Supports referential integrity
- Provides a SQL Command button (stored procedures)
- Supports Large Objects (Windows and Java only)
- Lets you design unlimited numbers of table editing forms to deploy for specific tasks and/or on specific data

IBM DB2 Web Query Tool for Multiplatforms, Version 1.3

DB2 Web Query Tool for Multiplatforms makes it easy for users at all levels to access enterprise data for query, data comparison or reporting through multiple interfaces. These interfaces can include traditional Web-based browsers, e-mail clients and wireless devices such as PDAs, text pagers and WAP-enabled cellular phones. With Version 1.3, DB2 Web Query Tool also supports IBM Informix Dynamic Server 9.x. Other capabilities of the tool include:

- Supports WebSphere 4.x
- Provides server side XSL translations
- Supports stored procedure
- Provides publishable results/queries
- Provides the capability to mark saved objects as Web publishable (WQ assigns a url for direct access)
- Offers SOAP services
- Provides scalable vector graphing
- Supports Large Objects (LOB)

For more information - ibm.com/software/data/tools

*Extending the reach of your enterprise***IBM Informix DataBlade Technology****WNT W2000 LNX AIX UNIX HP-UX NUMA-Q SUN****Product
Update**

- **Extends server functionality**
- **Fuels high-speed content management**
- **Empowers customization**
- **Manages multi-media content with finesse**
- **Captures geospatial business intelligence.**

IBM Informix® DataBlade Technology puts the power of the Internet directly into the IBM Informix Dynamic Server. IBM Informix DataBlade modules are server extensions that are integrated into the very core of the engine, delivering unparalleled application functionality and outstanding performance. With IBM Informix DataBlade modules, images; formatted documents; and complex, time-series

video image and information html pages can all be stored, indexed and accessed directly in the relational database, providing greater security, performance, and ease of use.

Spatial DataBlade module enables you to intelligently manage complex geospatial information alongside traditional data without sacrificing the efficiency of the relational database model.

Geodetic DataBlade module supports global space- and time-based queries without the limitations inherent in map projections, and provides high precision regardless of global location.

TimeSeries DataBlade module provides sophisticated support for the management of time-series and temporal data.

TimeSeries Real-Time Loader module is a data loader that works in conjunction with TimeSeries and NAG (Numerical Algorithms Group) DataBlade modules to achieve better performance and analytics than is possible with either traditional relational databases or standalone real-time analysis software.

Web DataBlade module is a collection of tools, functions, and examples that ease development of "intelligent", interactive, Web-enabled database applications. The Web DataBlade module supports most Web Server APIs, and enables a truly interactive Web site. Tightly integrated with Web DataBlade is IBM Informix Data Director for Web (DDW), a powerful and visually intuitive development environment. DDW enables you to quickly prototype, build, manage and deploy dynamic Web applications.

Use a single DataBlade module, or integrate several to create a unique, customized information management solution. IBM Informix DataBlade technology can help you make more efficient, smarter business decisions.

For more information - ibm.com/software/data/informix/blades

Easy OLTP relational database for small to mid-size businesses

IBM Informix OnLine 5 Extended Edition

AIX LNX HP-UX SUN SCO



Product
Update



■ Provides superior OLTP, data integrity and multimedia data management capabilities

■ Supports a wide variety of application development and third party tools

■ Easy-to-use and runs on a wide range of UNIX-based hardware systems

■ Ideal for applications in stand-alone, networked, or embedded environments.

IBM Informix OnLine 5 Extended Edition provides users with fast response in low-to-medium transaction environments. It also:

- Maintains outstanding performance levels through raw disk management, shared memory, multiprocessor features, and cost-based optimization
- Ensures high availability through multiple recovery mechanisms
- Maintains data consistency at systems and transaction levels without compromising ease of access and performance
- Allows transparent manipulation of multiple databases at different locations and transaction consistency
- Features ease of administration.

For more information -
ibm.com/software/data/informix/online5/extended

Scalable, reliable, high availability OLTP database

IBM Informix Dynamic Server

WXP WS2003 W2000 LNX AIX UNIX HP-UX SCO SUN

■ Breakthrough scalability, manageability and performance

■ Superior total cost of ownership coupled with industry-leading support

■ Strong application partner support

■ Industry-leading extensibility

■ Strong Integration with IBM software portfolio

■ Broad cross platform and open standards support including Web Services, Linux, autonomic computing and on demand e-business.

IBM Informix Dynamic Server continues long-standing traditions within IBM and Informix of delivering the mission

critical data infrastructure that enterprises need to run their businesses. The latest IBM release of IDS contains significant enhancements in the areas of performance, replication, availability, scalability and security for superior on-line transaction processing computing. In addition, IDS continues to reduce the complexity, time, DBA skills and costs related to database management by simplifying and automating many of the tasks associated with maintaining an enterprise database. Upgrading from any previous release of IDS is a simple, highly automated task. IDS continues to enjoy support from many leading business partners and customers around the world.

For more information - ibm.com/software/data/informix/ids

Leveraging data for faster, better decision making

IBM Red Brick Warehouse

WNT W2000 LNX
AIX UNIX HP-UX SUN



Product Update

■ **Handles thousands of concurrent SQL queries, hundred of concurrent users, and terabytes of data**

■ **Offers a scalable platform for star schema-based decision support application**

■ **Delivers outstanding performance for the most complex business solutions**

■ **Open standards-based allowing third-party decision support solution to connect**

■ **Reduces deployment time, and saves on hardware and maintenance costs**

■ **A "Hands off" database engine.**

IBM Red Brick Warehouse™ is a lean SQL standard relational database that is built from the ground up for data warehousing. It is available in two configurations:

– **Workgroup Edition** is ideal for small to medium businesses and departmental solutions that require the power of an enterprise database on a computer with one or two processors

– **Enterprise Edition** provides all the feature of the Workgroup Edition and is available for SMP computers with three or more processors.

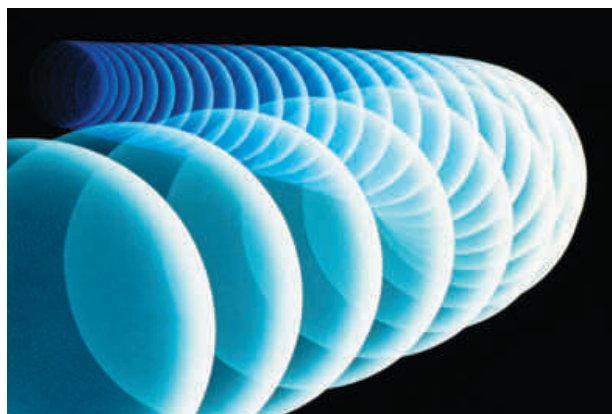
Red Brick Warehouse V6.20 delivers enhancements in backup and restore, data load/unload, locally segmented indexes, segment DDL, remote load Table Management Utility, system catalog, SQL/OLAP, query execution profiling, query rewrite extensions, ODBC scalar functions and IBM HTTP support for 3-tier JDBC tools.

For more information - ibm.com/software/data/informix/redbrick

Rapid application development

IBM Informix 4GL

LNX AIX UNIX HP-UX SUN



■ **Provides rapid development and interactive debugging capabilities**

■ **Offers excellent business reporting functions**

■ **Ideal for non-visual, update and calculation intensive logic**

■ **Customer applications range from online transaction processing (OLTP) applications such as order entry, distribution and business office to batch processing.**

IBM Informix 4GL provides great value in performing significant server-side logic (as opposed to simple stored procedure components) in a rich, debuggable language that promotes programmer efficiency. It also:

- Offers high performance in the production environment
- Integrates all the functionality you need for building even the most complex applications
- Does not require the use of a third-generation language
- Allows you to easily maintain your applications
- Based on industry-standard SQL.

For more information - ibm.com/software/data/informix/tools/4gl

Visualize and manipulate your enterprise data over the Web

Office Connect

WNT W2000 W98 W95

- **Data visualization and reporting for e-business**
- **Web-based framework for secure database access and manipulation**
- **Queries HTML data sources over the Internet**
- **Leverages existing office infrastructure**
- **No additional product training or Database/SQL expertise required.**

Office Connect™ provides users easy, distributed, secure data visualization and reporting capability using spreadsheet technology in client-server and Intranet/Internet environments. This solution not only works transparently with IBM and Informix Database Servers, but also with any ODBC/OLEDB/JDBC compliant database and HTML data sources.

Office Connect Personal Edition 3.0 for Small Business

A simple, intuitive, client-server product for Excel users to bind a spreadsheet cell to a database field for retrieval and modification of data.

Office Connect Web Edition 3.0 for Medium to Enterprise Business

- Web deployment: Web based framework to connect spreadsheets to servers running behind a firewall, for data manipulation over the Web
- Security: User access and role management
- Web query: Map data from a HTML page to a spreadsheet.

For more information -
ibm.com/software/data/db2/officeconnect

Enhanced business intelligence functions for DB2 users

DB2 Extenders

WS2003 WNT AIX SUN

DB2 Universal Database™ extenders can take your database applications beyond traditional numeric and character data to images, voice, video, complex documents, spatial objects and beyond. You can bring any or all of these data types together in one SQL query and manipulate them with powerful built-in functionality. A rich set of DB2 Universal Database Extenders is offered:

DB2 Net Search Extender provides a high performance method of searching text in DB2 databases. It is particularly advantageous in Internet applications where performance is important. It can add the power of fast full-text retrieval to Net.Data, Java, and CLI applications. The integration of these advance searching capabilities directly into the database saves the time and expense of integrating third party text based solutions while providing the speed and flexibility in text searching demanded by e-commerce applications.

DB2 Spatial Extender allows users to discover and exploit the spatial intelligence of their databases. Spatial and business data can be stored in the same database and

retrieved with the same query, allowing users to add a location query to results.

DB2 Data Links Manager adds intelligent content management building blocks to your database as though they are logically within the database. DB2 Data Links Manager guarantees referential integrity to these external files, provides enhanced access control to them and supports automatic and coordinated backup and restore capabilities that are crucial for data management in transactional environments. It simplifies and reduces system administration costs and complexities.

For more information - ibm.com/software/data/db2/extenders

*Integrated, real-time access to diverse and distributed data***DB2 Information Integrator**WNT WXP W2000 W98
LNX AIX HP-UX SUN**New**

IBM DB2 Information Integrator Version 8.1 provides the foundation for a strategic information integration framework to access, manipulate, and integrate diverse, distributed data in real-time. It enables users to access and manipulate data as though it is from a single source. DB2 Information Integrator core capabilities include:

A Federated Data Server – Administrators configure data source access and define integrated views across diverse and distributed data including both relational databases and non-relational data sources. Applications use SQL to query or search across the aggregated data sources as if they were in a single database. Applications can also insert, update, or delete rows from federated relational databases.

A Replication Server for Mixed Relational Databases – Users can replicate data between mixed relational data sources.

A Local Database Server – The Advanced Edition licensing option entitles the user to a full function copy of DB2 Universal Database.

To address customer requirements, IBM DB2 Information Integrator V8.1 is offered in these five editions:

Replication Edition provides the capabilities of a federated replication server.

Standard Edition provides the capabilities of a federated replication server and a federated data server, including powerful and versatile federated text search.

Advanced Edition includes the Standard Edition and adds the power and versatility of using the local DB2 UDB database server.

Advanced Edition Unlimited provides all the function of Advanced Edition and includes entitlement for an unlimited number of data connections.

Developer Edition offers a low cost package for a single application developer.

For more information - ibm.com/software/data/integration

*Extend your enterprise with DB2 on mobile devices***DB2 Everyplace**

WNT W2000 LNX AIX



DB2 Everyplace® is a small-footprint, high performance, enterprise ready relational database and synchronization server designed for mobile, wireless or embedded computing. It provides mobile workers with "no boundaries" access to enterprise applications and data and allows programmers to quickly develop leading edge mobile and enabled applications.

The **DB2 Everyplace Relational Database** is capable of high-performance data queries handling large volumes of mobile data and users using a high-powered database engine in a server in a connected or disconnected mode. It also delivers information encrypted on the handheld device, ensuring that corporate data is safe no matter where it resides or who attempts to access it.

In addition to the database itself, **DB2 Everyplace Enterprise Edition** includes the DB2 Everyplace Sync Server. This server securely exchanges data between enterprise data sources and mobile devices and also allows real-time queries to be performed. V8 delivers multiple server support and automatic upgrade deployment making it even more reliable, robust, and easy to use in a corporate environment.

For more information - ibm.com/software/data/db2/everyplace

Transparent access to data

DB2 Connect

WS2003 WNT W2000 W98
LNX AIX HP-UX SUN

- Enables fast, secure access from the Web to enterprise data stored in both relational and non-relational databases
- Provides the performance, scalability, reliability and availability needed for the most demanding e-commerce, CRM, BI, and ERP applications
- Provides extensive application programming tools for developing client-server and Web applications using industry standard APIs
- Integrates mobile PC and pervasive computing device users with up-to-date data from S/390 and AS/400 database servers.

DB2 Connect™ provides function rich and robust access to DB2 and Informix servers. It also also integrates data from non-relational mainframe systems and when used with IBM's extended federated capabilities, provides access to Oracle, Sybase, and Microsoft SQLServer databases. V8 of DB2 Connect enhances solutions in the following key areas:

- Performance and scalability
- Improved application availability
- Innovative manageability
- Application development productivity

DB2 Connect is made available as four separate products:

- **DB2 Connect Personal Edition** – licensed for use by one user on a single workstation, for connection to any number of mainframe and minicomputer database servers
- **DB2 Connect Enterprise Edition** – available with the Standard Server/User Model licensing option
- **DB2 Connect Application Server Edition** – license charges are based on the number of processors used by the web or application servers connecting to DB2 Connect
- **DB2 Connect Unlimited Edition** – unlimited usage model based on Millions of Service Units per hour (MSU) DB2 UDB entitlements.

For more information - ibm.com/software/data/db2/db2connect

Electronic record keeping

IBM Records Manager

WNT WXP W2000 W98



New



- e-records enable business applications – for both electronic and physical records
- Records are retained within the host application repository
- Full API programming language for Windows® and non-Windows environments
- 100% Web-based server technology and administration means zero desktop footprint
- DoD 5015.2-STD June 2002 certified
- Includes powerful Recordkeeping Methods Modeling (RMM) to support unique requirements.

IBM's Records Manager V2.1 brings electronic record keeping directly to your current business application software. Records Manager provides all underlying record keeping infrastructure on a remote dedicated server. You simply embed end-user Declare and Classify processes into the business software's user interface to record-enable the business application.

When a document is declared to be a corporate record, full formal lifecycle management will be applied to it. Records Manager assigns the appropriate retention and disposition rules to the declared record based on metadata characteristics using rules-based autoclassification. Declared documents are maintained and controlled within the application's repository, not removed from it.

For more information - ibm.com/software/data/cm/cmgr/rm

Delivering information on demand

IBM Content Manager and IBM DB2 Information Integrator for Content

WNT W2000 AIX SUN

IBM DB2 CONTENT MANAGER FOR MULTIPLATFORMS

V8.2 provides a foundation for managing, accessing, and integrating critical business information on demand. With Content Manager, you can integrate all forms of content – document, Web, image, rich media – across diverse business processes and applications, including Siebel, PeopleSoft, and SAP. It:

- **delivers integrated, central, consistent management of all content** and records across your enterprise and beyond including document management, digital asset management, and integrated Web content management
- **integrates with your existing hardware and software** investments enabling your organization to leverage a common infrastructure
- **streamlines workflow**, supports document routing, and leverages critical business content
- **delivers a multi-tier, distributed architecture** that is scalable, secure and able to support multiple operating systems, databases and applications
- **supports mission critical applications** including PeopleSoft, SAP, Siebel, and MQSeries
- **provides a common API** for integrating all forms of content to CRM, ERP and line of business applications

IBM DB2 Content Manager V8.2 includes DB2 Content Manager OnDemand, and optionally, DB2 Content Manager VideoCharger.

IBM DB2 CONTENT MANAGER OnDEMAND is an electronic report management and statement presentment solution that enables high-volume capture of computer output as well as archiving of scanned documents.

IBM DB2 CONTENT MANAGER VIDEOCHARGER uses Web browsers to deliver rich digital media over the Internet.

IBM DB2 COMMONSTORE SOLUTIONS for SAP, Lotus Domino, and Microsoft Exchange Server archive key data, documents, and e-mail, while providing users direct access on demand to content from those applications.

IBM DB2 CONTENT MANAGEMENT ENTRY OFFERING provides an affordable way for small businesses to deploy a centralized electronic content repository, with easy user search and retrieval using standard Windows clients or browser access.

IBM DB2 INFORMATION INTEGRATOR FOR CONTENT

V8.2 is an information integration framework for accessing and integrating diverse and distributed content across an enterprise. It provides:

- **easy access to and integration of content**
- **support for all forms of data**, including structured data (relational databases), or unstructured content (such as text, images and video)
- **a unified API set and single query interface** to supports enhancement of many e-business applications, including portals, content management, and knowledge management
- **connection to a multitude of other information sources**, including DB2 or other Open Database Connectivity (ODBC) and Java Database Connectivity (JDBC) relational databases, file systems, Lotus Domino databases, and more
- **capabilities for extended searches, crawling, information mining and advanced workflow**
- **enhanced information mining** with expanded language support and updated functions for support of IBM Intelligent Miner for Text

An optional feature, Content Connect for Panagon Images Services Server is also available to further enhance the capabilities of IBM DB2 Information Integrator for Content.

For more information - ibm.com/software/data/cm

Manage and access the DB2 Data Warehouse Center with ease

DB2 Warehouse Manager

WS2003 WNT W2000 AIX SUN



DB2 Data Warehouse Center provides an integrated, easy-to-use infrastructure for creating and managing data warehouses. DB2 Warehouse Manager is a separately priced feature that enhances the scalability, manageability, and accessibility of the DB2 Data Warehouse Center by providing:

- **Superb scalability with point-to-point data movement options for distributed systems**
- **Faster deployment via common, pre-built warehouse and statistical transformations**
- **Governing functions that allow the data center to manage query workloads**
- **Information on resource and user access history to charge-back and to pinpoint most-used data for tuning, or identify least-used data for archiving**
- **An information catalog that helps end-users find, understand and access relevant information**
- **Enterprise reporting to develop and deliver reports to unlimited clients**
- **Connectors that provide access to data that is managed by applications like SAP R/3 and webmarts**
- **Improved DB2 integration and exploitation with DB2 ESE load support and an integrated control center and replication center**
- **Support wait for multiple steps and support select from source and UPDATE target warehouse.**

Data warehousing is the foundation for business intelligence (BI) and Customer Relationship Management. DB2 Warehouse Manager provides an infrastructure that helps you build, manage, and access the data warehouses that form the backbone of your BI solution. You can then integrate other BI tools and applications with this framework to ensure you get the timely information needed to make your business decisions. DB2 Warehouse Manager includes Information Catalog and QMF for Windows – both with expanded capabilities.

Information Catalog: Assists with finding, understanding and accessing available information by:

- Populating the catalog by interchanging metadata with the Data Warehouse Center and other analytical tools
- Allowing users to directly register shared information objects
- Providing navigation or searching across objects to find relevant information
- Displaying the metadata about the object including name, description, contact, currency, lineage, and tools.

The Information Catalog Manager in V8.1 has been re-architected to provide an extendable metadata store, which can be used by the Information Catalog Center on multiple DB2 platforms. It now includes metadata object level security, user defined relationship types and also has a Web interface for ICC business users.

QMF™ for Windows: This is the third product integrated into DB2 Warehouse Manager. It provides a multi-purpose query tool for business reporting, data sharing, server resource protection, robust application development and native connectivity to all DB2 workstation platforms.

It queries DB2 from its own Windows interface or from your favorite Web browser and integrates with multiple Windows desktop tools. V8 of DB2 Warehouse Manager introduces “SQL Update” capability, which is frequently used in a warehouse environment to update the target data with the data selected from the source. In addition, DB2 V8 users will be able to define a process, which waits for multiple steps to complete.

For more information - ibm.com/software/data/db2/warehouse

*Business intelligence starts here!***IBM Query Management Facility for Windows
for DB2 Workstation Databases****WNT W2000 W98 W95**

- **Simplifies query and reporting tasks**
- **Allows users to create and run QMF objects with a Java enabled browser**
- **Provides capability for visualizing data spatially and with charts.**

QMF™ for Windows quickly accesses and visualizes data and provides native connectivity to all DB2 workstation database platforms. With reporting, charting, spatial data mapping, support for Intelligent Miner (IM) scoring, and powerful scheduling and automation capabilities, beginners and experts alike can quickly develop the business intelligence they need and easily share it with others.

QMF for Windows V7.2 also provides browser-based querying, centralized administration, and server resource protection to minimize maintenance and cost of deployment. Any number of end users are allowed with a single license.

For more information - ibm.com/software/data/qmf

*The platform for business analysis, planning and forecasting***DB2 OLAP Server****WNT W2000 AIX HP-UX SUN**

DB2 OLAP Server™ V8.1, based on Hyperion Essbase XTD, provides a complete OLAP (online analytical processing) server that:

- **Combines the high performance of Multidimensional OLAP with relational scalability**
- **Lets you exploit hardware with parallel calculation and data load**
- **Gives you a single point of administration for managing multiple OLAP Servers**
- **Offers a 100% Java™-compliant Analyzer for graphical analysis and reporting**
- **Enables you to automate the discovery of atypical patterns in your cubes.**

DB2 OLAP Server* gives you a fast path to turn your warehouse data into business insight and is built for e-business with tools to help you quickly deploy Web-based analytical applications. It is a scalable, industrial-strength Online Analytical Processing (OLAP) software that enables you to build sophisticated decision support, planning, and analysis applications for your enterprise.

This powerful platform also supports all major data warehouses and is easy to integrate into any computing environment. Its leading-edge features include rapid response times in networked environments, large-scale data capacity, multi-user read/write access, flexible data navigation and linked reporting objects.

For more information - ibm.com/software/data/db2/db2olap

The business intelligence platform for enterprise-wide analytics

DB2 Intelligent Miner

WS2003 WNT W2000 WXP AIX SUN

Digital
Delivery

■ **Provides a full-function workbench for interactive data mining of data in DB2 databases, flat files, or other relational databases via DataJoiner**

■ **Allows users to identify and extract high-value business intelligence from enterprise data assets**

■ **Supports discovery of patterns across volumes of data that can not be penetrated with other analytical tools**

■ **Delivers a wide range of mining technologies and techniques to create classification and prediction models, discover associations and sequential patterns, and automatically segment databases into groups of related records**

■ **Mines data in DB2 databases, flat files or other relational databases via DataJoiner**

DB2 Intelligent Miner™ Version 8.1 offers analysis, data exploration, and scalability options that enhance core data mining capability while making critical data more accessible to those who need it most. The enhanced capabilities of this product let you:

- Analyze business information more effectively with new visualizers for Associations, Tree Classification, and Demographic Clustering and extended data exploration
- Improve productivity through PMML- model support, export to spreadsheet, copy to clipboard and print visualizations
- Control costs with new scalability options including DB2 UDB V8.1 support and parallel processing support
- Take advantage of powerful resources through enhanced mining solutions such as SAP Business Warehouse integration and SPSS integration at the glass

DB2 Intelligent Miner Modeling V8.1 delivers DB2 extenders (specifically, stored procedures) for the following modeling operations:

- Associations discovery
- Demographic clustering
- Tree classification.

DB2 Intelligent Miner Modeling supports the development of data mining models in a format that conforms to Predictive Model Markup Language (PMML) V2.0, the new industry standard for analytic models.

DB2 Intelligent Miner Scoring V8.1 delivers database extenders (both DB2 extenders and Oracle cartridges) supporting the application of PMML 2.0 models to new data. Support is provided for all models developed via Intelligent Miner Modeling and for algorithms of DB Intelligent Miner for Data that support in application mode, which includes:

- Neural and demographic clustering
- Neural and tree induction classification
- Neural prediction and Radial Basic Function (RBF) prediction
- Linear, stepwise polynomial and logistic regression

Application programs can utilize Intelligent Miner Scoring to classify, rank, or predict the most likely business results for all rows of a large database, a subset of the database or a single row or case. DB2 Intelligent Miner Scoring V8.1 also delivers an in-memory scoring capability through the use of a Java applet.

DB2 Intelligent Miner Visualization V8.1 provides Java visualizers, to interact and graphically present the results of associations, demographic clustering and tree classification modeling operations. Input to the visualizers are PMML 2.0 conforming models.

The visualizers can operate inline in support of transaction processing or as an applet in a Web browser. The visualizers enable customers to analyze model results in order to gain new business insights.

For more information - ibm.com/software/data/iminer

The leading software platform for e-business on demand

WebSphere Software Platform Overview



WebSphere is infrastructure software for dynamic e-business, delivering a proven, secure and reliable software portfolio. Built on open standards, WebSphere evolves to meet the demands of companies faced with challenging business environments such as the need for increasing operations efficiencies, strengthening customer loyalty, and integrating disparate systems. WebSphere is the leading e-business platform that can provide everything you need to build, deploy and integrate your e-business, including: Foundation & Tools, Business Portals, and Business Integration. Together, these facets of the WebSphere software platform close the gap between business strategy and information technology, allowing you to create and operate a dynamic e-business.

Foundation and Tools to rapidly build and deploy applications for high-performance e-business on demand.

The core of your e-business is getting your business processes and transactions on the Web. Potential outages and performance issues can affect your bottom line. WebSphere Application Server, WebSphere Studio application development tools and WebSphere Host Integration software provide the reliable and scalable infrastructure that can support the weight of your business. Securely enables transactions and deploys Web services in an open manner. Capitalize on current skills sets and simplify application development with an open, comprehensive, development environment. Leverage and extend legacy assets to create new e-business solutions and modernize your enterprise.

Business Portals to enhance customer, employee, trading partner and supplier user experience for optimal satisfaction.

e-business is about providing a user experience that both strengthens business relationships and reaches into new markets. By extending and personalizing the user experience, WebSphere's Business Portals product families can help increase the satisfaction of customers, employees, partners, and suppliers. WebSphere Portal and WebSphere Commerce family provide the business portal capability, allowing people to interact and transact in a personalized way with diverse business resources. WebSphere Everyplace and WebSphere Voice software extend e-business applications to mobile devices and enable natural voice interactions with applications and data, allowing you take action anywhere, anytime.

Business Integration to increase operational efficiencies and enhance business flexibility by integrating applications and automating business processes.

Business Integration is the heart of e-business on demand. It allows you to leverage existing IT investments while adapting quickly to changing business conditions. WebSphere Business Integration provides the capabilities to model and simulate processes, integrate islands of processing, connect customers and partners, monitor business processes end-to-end, and manage processes for optimal effectiveness. With WebSphere Business Integration software and WebSphere MQ, you can slash cycle time and costs for a rapid ROI.

For more information - ibm.com/websphere

*Your on-ramp to e-business***WebSphere Application
Server - Express****WNT W2000
WXP LNX****New****Digital
Delivery**

- **Features a tightly integrated and cost-effective solution that includes a simplified Web application server, a development environment based on WebSphere® Studio, and application samples**

- **Minimizes your IT resources requirement with a small footprint and quick, wizard-driven, near-zero administration**

- **Offers migrations to other WebSphere Application Server and WebSphere Studio configurations.**

Supporting the latest specifications for JavaServer Pages, Java servlet, and Web services, WebSphere Application Server - Express V5.0 can help you build dynamic Web sites. You can view information in databases, perform simple updates, and create and use Web services. Its out-of-the-box installation, simplified administration functionality, and easy back-end database linkage make it a direct fit with any mid-market solution.

For more information -
ibm.com/software/webservers/appserv/express

*A powerful foundation supporting
e-business on demand***WebSphere Application
Server****WNT W2000 AIX
SUN LNX****Product
Update**

- **Offers integrated support for key Web services open standards**

- **Provides full J2EE 1.3 compatibility, including enterprise-ready JMS**

- **Delivers an advanced security-rich and extensible infrastructure**

- **Enhances flexibility through broad cross-platform support and multiple configuration options with a single application server code-base**

- **Enhances productivity with an integrated, open standards-based development environment**

- **Offers distributed workload and caching capabilities to intelligently optimize performance**

- **Delivers a single browser-based administration across all deployment options**

- **Enhances application availability with sophisticated clustering and load-balancing capabilities.**

WebSphere® Application Server V5 helps you maximize your return on investment, contain costs and make your administrative resources more productive. Wherever you are on the path to e-business, WebSphere Application Server's flexible options help you reach your business objectives.

Ideal for single server environments, **WebSphere Application Server V5** is the core Web services J2EE 1.3 certified application server, optimized for ease of administration in a single-server deployment environment. **WebSphere Application Server for Developers** provides a cost-effective means of delivering an application server run-time environment on every developer's desktop.

WebSphere Application Server Network Deployment offers advanced deployment services including clustering, edge services and high availability for distributed configurations.

For more information - ibm.com/software/webservers/appserv

Next generation application platform

WebSphere Application
Server Enterprise

WNT W2000
LNX AIX SUN



Features service-oriented architecture for representing software assets:

- Supports integrated J2EE-based workflow
- Offers advanced transactional connectivity and dynamic application support
- Optimizes application performance through application profiling, advanced workload management and Web Services support
- Leverages the latest J2EE-based innovations such as asynchronous beans, startup beans, scheduler service, and object pools
- Improves developer productivity with pre-built solutions including extended messaging support, cheat sheets, and internationalization service.

WebSphere® Application Server (WAS) Enterprise V5.0, optimized for use with WebSphere Studio Application Developer Integration Edition for Linux and Windows, is a next generation application server designed to:

- Streamline integration tasks by leveraging the power of Web services for building on demand, network-based applications
- Accelerate large-scale application development to deploy a high-performance e-business infrastructure designed to cut costs, build customer loyalty, and promote business agility
- Enable the real-time application flexibility required for on-demand applications.

WebSphere Application Server (WAS) Enterprise V5.0 for Developers provides a “unit test” environment.

For more information - ibm.com/software/webservers/appserv/enterprise/

Enabling ‘Application Aware’ networks

WebSphere Edge Server
for Multiplatforms

WNT LNX AIX SUN

WebSphere® Edge Server Version 2.0 for Multiplatforms (Edge Server) distributes application processing to the edge of the network under centralized administrative and application control.

It opens significant new opportunities for e-business, service providers, and independent software vendors with unparalleled application scalability and user response times. With its tight integration in the WebSphere software family, Edge Server is a world-class vehicle for deploying selected components into the network. Significant new functions and benefits of Version 2 include:

- **Application Offload** shifts the burden of serving composed, personalized, dynamic content from the application server to Edge Servers placed at network edges by offloading back-end servers and peering links.
- **Content Distribution** deploys published Web content to caches and re-hosting servers throughout the network.
- **Enhanced Caching** improves response time by offloading back-end servers and peering links as a forward, reverse or transparent proxy.
- **Enhanced Load Balancing** via new features such as Network Address, Translation (NAT), Kernel-level Content-Based Routing (CBR) support and the WebSphere Edge Server Consultant for Cisco CSS switches.
- **Security** is centralized using Tivoli SecureWay Policy Director Plug-in’s authorization engine to ensure only authorized users can access cached and non-cached Web resources.
- **Transactional Quality of Service** allocates computing and network resources according to a transaction’s business value. It allows customers to prioritize and secure traffic based on user classes and groups; optimizing resource utilization and improving network scalability.

For a complete edge of network solution, WebSphere Edge Server Version 2.0 also includes:

- WebSphere Application Server, Advanced Edition Single Server Version 4.0 (restricted usage license).
- Tivoli Policy Director V3.8 with 100 user licenses.

For more information - ibm.com/websphere/edgeserver

Build personalized sites easily

**WebSphere Personalization
for Multiplatforms**

**WNT W2000 SUN
LNX AIX HP-UX**



Digital
Delivery

- Provides an easy-to-use interface for defining how a Web site is personalized
- Defines campaigns of targeted Web page content and personalized e-mail

■ Delivers targeted content based on visitor's actions on the Web site

■ Works with WebSphere® Site Analyzer V4 to report on business rule effectiveness

■ Integrates with content management systems

■ Supports business rules and collaborative filtering personalization.

WebSphere Personalization simplifies the development of personalized sites by adding the following capabilities to WebSphere Application Server:

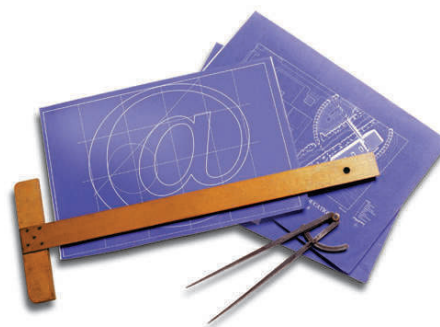
- Personalization workspace – allows non-technical users, such as business managers, to define a site's personalization strategy through an easy-to-use browser-based interface
- Campaign management – allows business managers to define a set of actions made up of Web page content and targeted e-mail to accomplish a business objective
- Implicit profiling – develops profiles of site visitors based on the content they view and their actions on the site
- Reporting on campaign and business rule effectiveness via WebSphere Site Analyzer
- Simplified integration with LDAP, IBM Enterprise Information Portal and Interwoven TeamSite
- Rules engine – executes business rules which determine what content is displayed to each site visitor
- Recommendation engine – collaborative filtering product for making content and product recommendations. Up to 25,000 profiles are licensed to be stored. Capacity can be expanded in increments of 250,000 profiles with WebSphere Collaborative Profiles
- Resource engine – a set of Java APIs which simplifies integration with multiple sources of profiles and content.

For more information -
ibm.com/software/webservers/personalization

Traditional and Web Services application and development tools

VisualAge Enterprise Suite

WNT W2000



This suite of application development tools allows you to quickly move to e-business and simplify your application development software purchasing and administration. It can:

- Optimize I/T expenditures by helping eliminate shelfware and multiple tools
- Help reduce administration costs associated with tracking software use
- Gain productivity across the enterprise by taking advantage of the latest advances in application development tools
- Increase developer flexibility with a suite of tools that allows developers to use the right tool for traditional or e-business based projects
- Increase reusability and control of software with standardized development methodologies and tools.

IBM VisualAge® Enterprise Suite is a bundle of Windows and Windows NT development products that offers an end-to-end set of tools available for one single price. Each licensed developer in your organization is entitled to use any of the products in the suite.

- WebSphere Studio Application Developer Integration Edition for Windows V4.1
- VisualAge Generator Developer V4.5
- VisualAge COBOL for Windows NT V3
- VisualAge PL/I V2.1
- Versata Studio Client V5.5 (a product of Versata, Inc., an IBM Business Partner)

For more information - ibm.com/software/ad/vaes

Powerful, flexible, easy-to-use application development tools

IBM VisualAge Family



Digital
Delivery



IBM application development tools deliver the industry's broadest support for Java™ J2EE™, Web services, XML, HTML, rich media, site design, voice, wireless and embedded devices. By offering solutions that are enterprise-oriented, open and geared towards business processes, and designed to handle high-volume transactions and integration across many computing systems, IBM is leading the next generation of application development.

A vast array of award-winning, industrial-strength VisualAge® tools and technologies, specifically designed to help you enable e-business solutions for the enterprise are available. They include:

VisualAge C++

VisualAge C++ Professional for AIX, V6.0 software is a highly productive, and powerful development environment for generating and debugging high performance and efficient C and C++ software applications for AIX.

It includes a make-file-based, command-line C++ compiler that supports the latest ANSI/ISO 1998 C++ standard. Both 32-bit and 64-bit architecture and optimization technologies are supported.

VisualAge C++ Professional for AIX also includes a complete implementation of the latest C for AIX compiler that allows you to write both C and C++ applications or to extend an existing C application using C++.

Enhancements in V6.0 offer:

- Improved portability through support in C++ for the OpenMP industry specification
- 32-bit and 64-bit application development
- Enhanced template handling for faster compilations and the generation of smaller objects
- Inclusion of the C for AIX compiler at the latest C99 International Standard
- Support in C++ for the latest approved clarifications of the ISO 1998 C++ Standard
- Partial GNU C/C++ portability support to ease migration of code from GCC
- Generation of highly optimized code for all RS/6000 processors including the PowerPC and POWER4 architectures
- New compiler options and programs
- Inclusion of an enhanced level of the IBM Distributed Debugger which support the debugging of C99

VA Smalltalk

Through the pure object-oriented language of Smalltalk you can quickly create portable, scalable, multi-tier business applications.

With the introduction of Web services support, VisualAge Smalltalk V6.0 allows you to take your existing and future Smalltalk assets and create self-contained, modular applications. Using industry-standard protocols such as Simple Object Access Protocol (SOAP) messaging and WebSphere Open Servlet Engine (OSE) plug-in, your valuable, proven Smalltalk code can integrate with anyone, anywhere on the net.

VisualAge Smalltalk lets programmers create and deploy e-business applications that are cross-platform, object-oriented, and provide:

- Deployment support for enterprise Web service solutions for dynamic e-business
- Protection of communication transactions with Secure Socket Layer (SSL) support
- Asynchronous call-out on all deployment platforms
- Server Workbench included with VisualAge Smalltalk
- XML Schema Support
- Enhanced Server Smalltalk Functionality (HTTP 1.1, HTTPS and servlet api)
- Headless execution of OLE
- Ability to rename configuration maps, applications and classes
- New support for Red Hat Linux, Windows® XP and Windows® ME

For more information - ibm.com/software/ad

Powerful, flexible, easy-to-use application development tools

IBM VisualAge Family (cont.)

VisualAge Generator

IBM VisualAge® Generator is a powerful high-end, rapid application development environment for building and deploying e-business applications. VisualAge Generator delivers high-volume transaction processing in multi-tier, multi-platform e-business environments, masking the complexity of data and communications connections. Developers with little or no Java expertise can implement end-to-end Java e-business systems. OO and Java developers can implement systems running on traditional transactional platforms, such as CICS® or IMS, and accessing legacy data, such as DL/I or VSAM, with no need to become mainframe experts.

VisualAge Generator includes the following features:

- WebSphere rapid application creation: provides a fast path to creating scalable e-business systems using VisualAge Generator and WebSphere
- MQ Series® rapid application creation: speeds the deployment of B2B (business-to-business) applications
- Integration with VisualAge for Java: VisualAge Generator is fully integrated with VisualAge for Java providing a Java-based development and test environment for the creation of Java GUIs, applets and servlets, as well as new transactional server programs
- Enterprise Java Bean support: VisualAge Generator server programs can be invoked from Java clients via an Enterprise JavaBean component (session bean)
- Java Server generation: generates Java server code for Windows 2000® and Windows NT®
- DL/I, VSAM, and OS/400® file support: Speeds the development of systems accessing legacy data.

VisualAge COBOL

VisualAge® COBOL for Windows NT™ Version 3.0 is a powerful COBOL development tool for the Windows NT environment that utilizes the popular COBOL language with object-oriented extensions and an application development environment that includes compiler, runtime, visual builder, debugging, LPEX editor, performance analyzer, Workframe, and assistant tools. Its remote edit/compile/debug development capability allows you to work with host OS/390 applications from your workstation without duplicating and managing host environments on the workstation.

VA COBOL is designed to increase developer productivity, particularly when creating and maintaining host applications from the workstation, through a variety of function and usability enhancements, including:

- OS/390® connectivity for remote edit/compile/debug development of host applications
- Visual Builder development, redeveloper tools, and cross-platform development
- Improved on-screen assistance, many customization options, and additional buttons in the Workframe project tool
- New, common debugger for workstation and remote OS/390 application debugging
- Support for development of COBOL applications with DB2® OS/390 stored procedures from the workstation
- New online help viewable with your favorite Web browser

For more information - ibm.com/software/ad

A comprehensive, open development environment to meet the needs of your evolving e-business

WebSphere Studio Product Family
WNT WXP W2000 WMe W98 W95 LNX

Product Update

Digital Delivery


WebSphere® Studio is an open comprehensive development environment for building, testing and deploying dynamic on demand e-business applications. Founded on open technologies and built on Eclipse, WebSphere Studio provides a flexible, portal-like integration of multi-language, multi-platform and multi-device application development tools that maximize developer productivity, increase ROI and improve overall time to value. Available in a number of configurations, with extensions from IBM and business partners, WebSphere Studio is designed to meet specific development needs of your growing business – from Web interfaces to server-side applications, from individual development to advanced team environments, from Java development to application integration.

WebSphere Studio Homepage Builder is an entry-level Web authoring tool for creating and publishing professional-quality Web sites without the need for HTML knowledge or programming skills. It provides an intuitive WYSIWYG interface, easy-to-use wizards and templates, and support for JavaScript, Dynamic HTML and Cascading Style Sheets. Other key features include:

- Visual page editor with free layout mode
- WebVideo Studio to create innovative movies with ease from your digital video camera or similar photo equipment
- Advanced image effects: rollover, mesh, slide show, photo album
- Web pages for cellular phones and PDAs
- WebArt Designer to create line drawings and sophisticated images
- Images and sounds in a built-in library
- Interactive audio visual tutorial.

WebSphere Studio Device Developer allows developers to combine the power of WebSphere with the convenience of low-cost, portable devices. This development environment helps you build, test and maintain J2ME applications deployed to cellular telephones, PDAs, kiosks and other pervasive devices. Key enabling features include:

- Integrated Java development environment – built-in code assist/completion and generation
- Interface to version control – SmartLinker allows tuning of an application for the target device

- Remote debugger that enables developer to test applications 'live' on the target device
- Powered by eclipse technology – plugs into any other WebSphere Studio product to form a comprehensive end-to-end application development environment.

WebSphere Studio Site Developer is the on-ramp to the WebSphere Studio experience. This robust, easy-to-use development environment helps you build, test and maintain dynamic Web sites, applications and Web services quickly. Key enabling features include:

- Built-in code assist / completion and generation
- Built-in Unit Test environment and easy-to-use Java and Javascript debugger
- Support for XHTML, JSP 1.2, Servlet 2.3 , JDK 1.3
- Integrated Java development environment and Visual Editor for Java
- Visual Web development environment to rapidly build dynamic Web sites
- Struts-based Model View Controller to map out and visually construct Web-based applications.

WebSphere Studio Application Developer is IBM's core application development environment for creating and maintaining J2EE applications and Web Services. Built upon the latest innovations from the open universal Eclipse platform and written to J2EE specifications, Application Developer provides:

- Best practices, templates, and code generation facilities to efficiently create J2EE artifacts and database applications
- Web services wizards to generate Web services the ground up or reuse existing development assets
- Profiling and tracing tools to detect, isolate, and fix performance issues early in the development cycle
- Collaborate and share development assets across the team with Rational ClearCase LT.

WebSphere Studio Application Developer Integration Edition builds on the functionality offered by WebSphere Studio Application Developer to deliver a next generation, integrated development environment for building, testing, integrating and deploying J2EE applications and Web services. Optimized for use with WebSphere Application Server Enterprise V5.0, it helps you:

- Simplify build-to-integrate tasks with a service-oriented architecture, integrated J2EE-based workflow and advanced transactional connectivity capabilities
- Accelerate large-scale application development with advanced application profiling, deployment management, and a fully integrated development environment
- Enable real-time application flexibility with WebSphere Application Server Enterprise features such as business rules beans and dynamic query service.

A comprehensive, open development environment to meet the needs of your evolving e-business

WebSphere Studio Product Family (cont.)

WNT WXP W2000 WMe W98 W95 LNX

WebSphere® Studio Enterprise Developer brings the power of J2EE, rapid application development (RAD) and support to diverse enterprise application development teams. With comprehensive development tools to help create, deploy and maintain enterprise Web applications, traditional applications, and linkages between the two, developers from different technical backgrounds can easily participate in e-business projects together. Key features include:

- Powerful integrated development environments for Java, EGL, COBOL and PL/I technology-based components, including language understanding, syntax checking, compiling and unit testing – supported in local and remote

environments

- Easy-to-use Web diagram editor that speeds the design, development and generation of J2EE application flow and processing based on Struts, an open-source implementation of the MVC component architecture
- Component generation using EGL in WebSphere and CICS environments, including the ability to generate to or change environments as business and integration needs change
- Powerful integrated tooling to implement Web services and process XML data, including transforming messages in z/OS™, COBOL and Web environments.

For more information - ibm.com/software/ad/adstudio

The WebSphere Studio product family comparison

	WebSphere Studio Homepage Builder	WebSphere Studio Device Developer	WebSphere Studio Site Developer	WebSphere Studio Application Developer	WebSphere Studio Enterprise Developer
Eclipse technology-based user interface		X	X	X	X
Web tools	X		X	X	X
Struts support			X	X	X
Relational database tools			X	X	X
XML tools			X	X	X
Web services			X	X	X
Java tools		X	X	X	X
Team support		X	X	X	X
Integrated unit test environment			X	X	X
Profiling and tracing tools		X		X	X
J2ME tools		X			
J2EE tools			X	X	X
Generated EJB test client				X	X
Rational ClearCase LT (included)				X	X
Java Message Service (JMS) tools					X
Java Connector Architecture (JCA) tools				IE*	X
Visual workflow tools				IE*	X
Service-oriented architecture				IE*	X
Assembler, COBOL, and PL/I tools					X
Creates IBM CICS code, IBM IMS and SQL statements					X
Enterprise Generation Language (EGL) tools					X
Runtime support					
Tomcat		X	X	X	X
WebSphere Application Server - Express			X	X	
WebSphere Application Server			X	X	X
WebSphere Application Server Enterprise				IE	X
WebSphere Micro Environment		X			

* Available only in WebSphere Studio Application Developer Integrated Edition

Caters to the needs of your development team

WebSphere Portal Development Community

WNT W2000



- Enables “out of the box” aggregation, personalization, and management of Web-based development assets
- Customizes development environment to match work patterns
- Provides quick access to data and work teams
- Enables instant access to a wide variety of portlets
- Reduces development costs by improving development teaming and communication
- Extends business and technical expertise across development teams while reduces training and ongoing learning costs.

Leveraging the functionality of the WebSphere® Portal family of products, WebSphere Portal Development Community provides a development gateway for application and portlet developers by delivering an integrated, extensible and scalable portal. It provides common access to the Web for information, tools, and applications that a development team needs. It enables collaboration, common methodology, and promotes development of best practices. The portal consists of a set of pages and portlets, both of which you can customize to reflect your needs. WebSphere Portal Development Community complements the WebSphere Studio tools, and provides access to all Eclipse-based documentation.

For more information - ibm.com/software/awdtools/portaldc/about

Fast and cost-effective deployment of portals

WebSphere Portal - Express

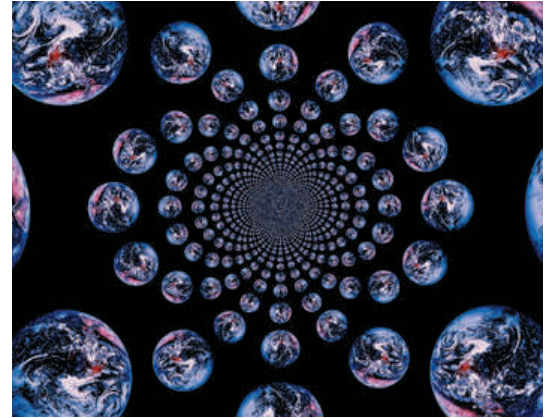
W2000 LNX



New



Digital Delivery



- Combines features of the WebSphere Portal family with simplified installation and the option for per-user or per-processor price
- Supports Microsoft SQL Server.

WebSphere® Portal - Express enables small businesses and departments within larger companies to more easily deploy sophisticated employee, business partner, and customer portals. Its key features include:

- Provides a portal framework for integration with applications and data sources
- Enables personalization of portlet content using business rules
- Allows access of user profile information stored in a Domino Directory, Secureway LDAP Directory or Microsoft Active Directory
- Includes Secureway LDAP Server and WebSphere Application Server
- Offers built-in portlets for adding a wide selection of applications, and a toolkit for simplifying portlet development
- Delivers a rich set of security features including single sign-on, user authentication, and portal membership management
- Expandable to include integrated collaboration functions such as instant messaging and team rooms.

For more information - ibm.com/software/webservers/portalexpress

Deliver a personalized and collaborative B2C / B2B / B2E portal experience

WebSphere Portal for Multiplatforms

WNT W2000 AIX LNX SUN



Product
Update



■ Provides enhanced access to Web-based information and applications

■ Updates software contained in the offerings

■ Extends the reach of available portlets.

WebSphere® Portal for Multiplatforms delivers a unified IBM portal strategy, bringing together the software components you need to help you securely deliver tailored content and collaborative portal experience to employees, suppliers and customers. Portal technology. Content personalization capabilities. Collaboration features. Web site analysis. Content management functions. Open standards-based. Rich set of portlets and best-of-breed IBM technology. All designed to help you maximize your Web site effectiveness and your return on investment.

Whether you want to implement a simple portal, enhance its capabilities in stages, or immediately exploit the full breadth of IBM portal functionalities, the three simple packaged options of WebSphere Portal are designed to meet and grow with your unique portal needs.

WebSphere Portal Enable offering: get a portal up and running – quickly and easily

A flexible, scalable horizontal portal framework providing you with the foundation for implementing highly personalized portals.

- Integrates enterprise applications, syndicated content, Web sites, e-mail, and more through a wide variety of portlets

- Dynamically personalizes portal content using business rules and collaborative filtering
- Enables business users to manage portal content
- Leverages a common set of services for connectivity, integration, administration, and presentation that is required across portal environments
- Customizes and extends the portal framework with the portlet API to meet unique portal requirements.

WebSphere Portal Extend offering: deploy multiple B2C, B2B and B2E portals

Includes all the Enable capabilities and adds integrated collaboration, extended search and Web site analysis.

- Provides work environments equipped with collaboration tools such as discussion areas, document libraries, group calendars, task and milestone tracking, online people awareness and instant messaging
- Allows searches across multiple repositories including relational databases, Lotus Notes and Domino databases, popular Web search engines, and text or HTML documents
- Captures, stores, measures, reports and charts Web site visitor trends and preferences on all Web initiatives.

WebSphere Portal Experience offering: a comprehensive portal solution

Includes all the Extend capabilities and adds advanced collaboration, enterprise content management and enhanced security features.

- Effective online collaboration through e-meetings, application sharing and whiteboarding as well as the ability to take team rooms offline
- Data storage for a broad spectrum of digital information including facsimiles, images, PC files, XML, and multimedia
- Content infrastructure for applications including call centers, high-volume claims processing and accounts payable
- Folder management and document workflow
- Sample Java applications and advanced development tools
- Security policy management tools for e-business and distributed applications.

For more information - ibm.com/software/webservers/portal

Connect applications and information more efficiently

WebSphere MQ Family

e-business is accelerating the pace of change. Because speed-to-market and quality-of-service are so critical for success, companies must be agile to survive. The **WebSphere MQ family** provides a versatile platform for e-business that allows companies to maximize their e-business opportunities by:

- Quickly and economically addressing business integration issues
- Becoming more agile and staying flexible
- Maintaining customer orientation
- Leveraging existing resources
- Improving speed-to-market
- Anticipating IT changes as their business changes.

The WebSphere MQ family consists of five key elements:

WebSphere MQ, formerly MQSeries® and the core of the WebSphere MQ family, integrates over 35 platforms. Providing the base messaging functions for servers and clients, and assuring once only message delivery, it can be used alone or with other members of the family.

WebSphere Adapters, formerly MQSeries Adapter Offering, provide solutions for connecting legacy systems and packaged applications to WebSphere MQ using MQSeries Adapter Offerings and packaged adapters.

WebSphere MQ Everyplace brings the benefits of assured message delivery and rock-solid security to the failure-prone environment of mobile working. It enables access to enterprise data for mobile workers and remote devices from anyplace at anytime.

WebSphere MQ Integrator Broker is a powerful information broker that includes a one-to-many connectivity model plus transformation, intelligent routing, and information-flow modeling across multiple, disparate business systems.

WebSphere MQ Workflow, formerly MQSeries Workflow, a business process management system, enables the definition, execution, and swift change of complete business processes that span systems, applications, and people.

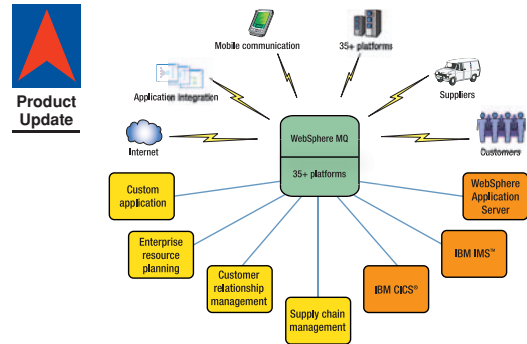
In addition to these 5 key products, extensions provide additional supported function and are available as a download from the Internet.

For more information - ibm.com/software/mqseries

Enterprise application integration

WebSphere MQ

WNT WXP W2000 LNX
AIX HP-UX SUN



■ **Supports heterogeneous any-to-any connectivity from desktop to mainframe (over 35 platforms supported)**

■ **Provides a comprehensive family of APIs designed to make coding for any messaging task straight forward**

■ **Ensures once-only delivery of important messages.**

WebSphere MQ (formerly MQSeries®), the core of the MQ family, provides application connectivity. It can be used alone or with other members of the family to deliver an end-to-end business integration solution.

A major new release of WebSphere MQ, Version 5.3, delivers enhancements that simplify programming, harmonize features across platforms, and improve security and performance. They include:

- Comprehensive security options provided by Secure Sockets Layer (SSL) support
- Extended Java Message Service (JMS) support
- Increased product flexibility by the API crossing exit
- Enhanced performance and scalability, both for the MQI (Message Queuing Interface) and for JMS (Java Message Service) with publish/subscribe users
- Enhanced functions allow easier system management of MQ clusters.

For more information - ibm.com/software/mqseries

Manage information flow to achieve business and application integration

WebSphere MQ Integrator Broker

WNT W2000 AIX HP-UX SUN

WebSphere® MQ Integrator Broker is an information broker that routes, transforms and enriches inflight information between applications, devices and people who need it across and between enterprises. It:

- **Orchestrates the flow of information based on business rules**
- **Transforms, distributes and enriches information on the fly**
- **Enables integration of manned and unmanned pervasive devices**
- **Supports dynamic content and topic-based publish/subscribe capability**
- **Provides sophisticated, easy-to-use GUI tools**
- **Integrates with a wide range of WS Business Integration Adapters.**

IBM WebSphere MQ Integrator Broker is a high performance, scalable, robust and powerful information broker which has a graphical user-interface that allows solution developers to design message flows. It is able to handle multiple transports, such as WebSphere MQ messaging, WebSphere MQ Everyplace for pervasive devices and telemetry integration for remote sensory and control devices. It enables the end points to be notified of events of interest through a high performance publish and subscribe model and provides a control center that allows solution administrators to deploy and manage a distributed network of brokers.

For more information - ibm.com/software/mqseries/integrator

The data you need, when you need it

WebSphere MQ Event Broker

WNT W2000 AIX HP-UX SUN

WebSphere® MQ Event Broker, V2.1 enables processes and information to be linked based on topic or content of events. It provides:

- **Dynamic publish and subscribe functions based on topic or content**
- **Message routing between direct connection, WebSphere MQ and pervasive protocols**
- **A highly scalable, event-driven model to integrate applications, people and devices**
- **A high-performance, direct mode of connection for Java™ Messaging Service (JMS) clients for non-persistent IP messaging**
- **Built-in support for pervasive devices through WebSphere MQ Everyplace and computer-telemetry integration (CTI) systems**
- **A graphical development environment to help visualize information flows and multi-broker topologies**

WebSphere MQ Event Broker combines the assured delivery of WebSphere MQ with fast publish/subscribe (pub/sub) technology. It is the only software that can deliver real-time personalized information across an internal network, the Internet or pervasive devices. You can ensure delivery of messages or allow them to be seen only if the subscriber is monitoring for them. Message subscribers can ask to see only certain topics and can select only messages with certain contents.

WebSphere MQ Event Broker supports Java Message Service (JMS) clients for assured delivery and non-persistent messages. Point-to-point and pub/sub messaging are supported, although the optimized broker only supports pub/sub.

For more information - ibm.com/software/mqseries/eventbroker

Achieve business integration

WebSphere MQ Workflow

WNT W2000 AIX
HP-UX SUN



- **Delivers model-driven e-business process automation and tracking**
- **Manages workflow and processes involving systems or systems and people**
- **Spans application and organization boundaries**
- **Reduces work hand-off and thus cycle time**
- **Supports transactional and universal integration based on MQSeries® and XML: Nothing gets lost nor executed twice**
- **Offers ultimate performance and scalability.**

IBM WebSphere® MQ Workflow V3.4, formerly IBM MQSeries Workflow, continues with the support of long-running business process workflows as they interact with systems and people. It provides integration processes with rich support for human interactions and deep application connectivity leveraging WebSphere MQ, XML, J2EE, Web Services, and WebSphere Business Integration software.

WebSphere MQ Workflow is built to a service-oriented architecture based on standards. It is the business process workflow engine at the heart of Business Integration, supporting e-business customer initiatives for BPM, BAM, EAI, B2B, Web Services and Portal Integration. New capabilities in V3.4 include portal client, LPAD directory support, WSDL and JSP support, Business Activity Monitoring (BAM) support, performance improvements, and per-processor licensing.

For more information - ibm.com/software/integration/wmqwf

Reliable messaging for mobile users

WebSphere MQ
Everyplace

WNT W2000 W98 WMe W95
LNX AIX HP-UX SUN



WebSphere® MQ Everyplace (formerly MQSeries® Everyplace) brings reliable communications to an unpredictable world.

- **Extend an MQ network to new platforms and devices**
- **Exploit the WebSphere MQ Integrator by routing transactions from stores and checkouts into the Integrator**
- **Get the benefits of assured once-only delivery, with high-level security, over fragile and unmanaged communication networks**
- **Use WebSphere MQ Everyplace to provide “earliest possible” delivery of key business data.**

WebSphere MQ Everyplace, V2.0 extends the WebSphere MQ family, the infrastructure for connecting servers and mainframes in e-business solutions, to mobile platforms and devices, and retail systems. WebSphere MQ Everyplace complements the WebSphere MQ base product by providing robust messaging capability on small and mobile devices, as well as providing a direct link to WebSphere MQ Integrator – and enables e-Business messaging for the WebSphere Everyplace product set.

This release provides native support for C implementation on Windows PocketPC to extend the programming choice in the handheld market. It also supports point-to-point messaging via the Java Message Service (JMS), and extends Java programming to smaller devices that can run Java Micro Edition (J2ME).

For more information - ibm.com/software/ts/mqseries/everyplace

B2B integration capability for added value and cost savings

WebSphere Business Connection

W2000 AIX SUN



New



- **Facilitates cross-enterprise process and data sharing for any type or size of business**
- **Offers secure and scalable solutions ranging from simple, low-cost Web services connection to support for additional trading partners and complex business processes**
- **Lowers integration costs and enables faster deployment using open standards and pre-built business processes and adapters.**

WebSphere® Business Connection provides a scalable set of offerings which is designed to simply the integration of your business to trading partners.

– **WebSphere Business Connection Express**, the entry-level edition in the family, offers low implementation cost and speedy deployment for small trading partners. It includes the Web Services Gateway with up to ten Web services-based connections, and a Web services runtime capable of executing J2EE/Web services-based business processes.

– **WebSphere Business Connection** adds industry standard connectivity, process integration and document exchange. It supports 50 Web services-based connection and one TPI-based connection.

– **WebSphere Business Connection Enterprise** further extends the offering with EDI over the Internet, and accommodates 100 Web services-based connections.

For more information - ibm.com/software/integration/busconn

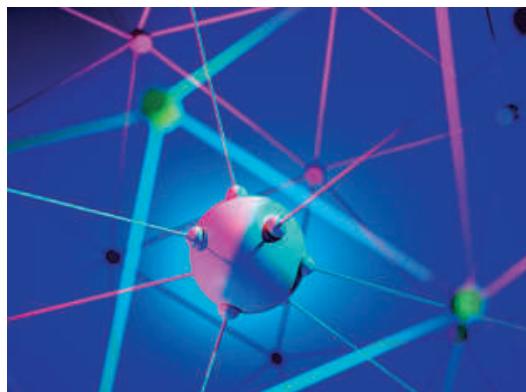
Data and application integration within one coherent approach

WebSphere Business Integration Adapters

**WNT W2000
AIX SUN**



Product Update



- **Link your data, technologies, packaged applications, and legacy systems, and connect to trading partners**
- **Offer a wide and growing variety of industry-specific and cross-industry connectivity options**
- **Run on an open-standards-based common framework allowing speed and ease of deployment**
- **Feature a stand-alone adapter architecture which supports WebSphere® Business Integration Server (previously known as IBM CrossWorlds InterChange Server), WebSphere MQ Integrator, or WebSphere MQ Integrator Broker**
- **Provide object discovery tools, event management functions, bi-directional and meta-data driven connectivity**
- **Include tooling for building new adapters.**

WebSphere Business Integration Adapters allow you to quickly and easily create integrated processes that exchange information between ERP, HR, CRM and supply chain systems. These pre-built, stand-alone solutions offer you simpler implementation and configuration, greater interoperability, system flexibility and change protection. They can help you protect your investment, keep your business agile, speed your time to market and hone your competitive edge.

For more information - ibm.com/software/integration/wbiadapters

Integrate, automate, and manage business processes

WebSphere Business Integration Server

WNT W2000 AIX SUN HP-UX

**New**

WebSphere® Business Integration Server V4.2 (previously released as WebSphere Business Integration V4.1) is a comprehensive business integration platform that combines process integration, application connectivity, business-to-business interaction, and workflow capabilities in a single, cost effective product.

WebSphere Business Integration Server is designed to:

- support hub-and-spoke technologies that greatly reduce the complexity of maintenance
- leverage the concept of a common business object model within the integration middleware
- use XML technology allowing artifacts and common business objects to be shared at runtime.

WebSphere Business Integration Server is comprised of the following components:

WebSphere InterChange Server V4.2 (the follow-on release of IBM CrossWorlds V4.1.1) – coordinates business process activities that extend across multiple applications – geographically local or remote, internal or external to the organization.

WebSphere MQ Workflow V3.4 (see page 34) – coordinates long-lived activities that span multiple systems and groups of workforce. Avoid bottlenecks by automating and managing task list assignment, rather than ad-hoc emails to individuals.

WebSphere MQ Integrator Broker for Multiplatforms V2.1 (see page 33) – coordinates information flows by transformation, intelligent routing and enrichment of in-flight messages across multiple, disparate business systems.

WebSphere Business Integration Toolset V4.2 (the follow-on release to IBM CrossWorlds Full Toolkit) – provides comprehensive tooling to generate the artifacts required for an enterprise integration solution, including process collaborations, workflows, message flows and business objects.

New features of V4.2 include:

- Feature and performance enhancements to all components
- Adoption of the open-source Eclipse Framework
- Enhanced Web services, workforce management and national language support
- Additional platform support.

A broad range of optional complementary products are available to accelerate the delivery of WebSphere Business Integration Server solutions. These include WebSphere Business Integration Adapters (see page 35), Business Integration Collaborations, and industry-specific customizations (see page 37).

With WebSphere Business Integration Server, you can quickly integrate new or existing applications or systems on diverse platforms, or create and deploy new business processes rapidly. WebSphere Business Integration Server allows you to start small, scale fast, and implement a reusable open integration infrastructure that spans departmental initiatives and evolves to become the enterprise backbone supporting the whole enterprise.

For more information - ibm.com/software/integration/wbiserver

Proven accelerators to deliver more effective results – faster and easier

WebSphere Business Integration Solutions

WNT W2000 AIX SUN HP-UX



New



Running on WebSphere® Business Integration Server, WebSphere delivers a portfolio of business process integration options which can be mixed and matched to meet the needs of your business.

WebSphere Business Integration Collaborations

(previously IBM CrossWorlds Collaborations) provides pre-built, customizable templates for automating business process in the following operational areas:

- **Customer relationship management (CRM)** allows you to leverage accumulated customer information by integrating front-end systems with corporate back-end IT systems, providing you with a consolidated view of customers and markets, across all available channels
- **Enterprise resource planning (ERP)** offers rapid linkage between packaged and legacy applications with minimum risk
- **Supply chain management (SCM)** helps you connect to every link in your supply chain and incorporate all your business' systems in your SCM effort
- **Straight-through processing (STP)** enables you to implement changes while controlling costs, improve overall efficiency, meet regulatory requirements, and reduce risks
- **Mergers and acquisitions** helps unify your systems and platforms, and helps a merger or acquisition go smoothly
- **Web exploitation** helps you build solid, secure, efficient connections, both inside and outside the firewall.

These ready-to-use sets of best-practices processes are application-independent. They allow you to graphically define end-to-end processes and encapsulate basic integration and business rules for business processes. When combined with the application-savvy WebSphere Business Integration Adapters, they provide a complete solution for a range of business issues.

WebSphere Business Integration for Industries provides solutions focused on specific industry requirements to accelerate project implementation and improve return on investment (RIO) of business process integration projects.

An industry solution may combine industry-specific business objects, business process collaborations, workflows, and adapters for packaged enterprise applications that are widely used in that specific industry.

- **WebSphere Business Integration for Automotive** is designed to help improve your supply chain management coordination between tier 1 and downstream suppliers, manage complex relationships associated with auto-component design innovation, and implement process management to support greater volume of time-critical components, increasing complexity of product data flow, and shorter order fulfillment times.
- **WebSphere Business Integration for Electronics** provides an integration platform to streamline production. It allows you to achieve integration throughout your design, build, and support processes with collaborative templates. It also supports real-time demand planning, corresponding inventory planning, and global collaboration.
- **WebSphere Business Integration for HIPPA** facilitates the integration and management of business processes specific to the healthier and insurance industries. It offers built-in HIPPA content to help you automate business processes such as claims processing transactions, and to help achieve HIPPA readiness.
- **WebSphere Business Integration for Insurance** provides sophisticated business object integration and management capabilities to extend and integrate claims processing, policy administration, and policy underwriting processes for both the life and non-life sectors.
- **WebSphere Business Integration for Retail Distribution** enables a single view of your business, customers and channels by providing solutions that integrate disparate applications. It delivers retailer- and supplier-specific solutions comprised of industry-specific business process templates, an integration hub, and a portfolio of adapters to leading applications.
- **WebSphere Business Integration for Telecom** provides sophisticated Business Support Systems/Operational Support Systems integration capabilities using open standards. In addition to a fully integrated, 24 x 7 application environment, it delivers pre-built business processes that accelerate integration to provide end-to-end DSP, Wireless and IDC provisioning solutions as well as integrate customer care and billing.

For more information - ibm.com/software/integration/wbisolutions

Continually optimize how you do business

WebSphere Business Integration Modeler and Monitor WXP WNT W2000 W98 AIX SUN



■ Provides comprehensive and user-friendly modeling and collaboration capabilities for both Line-of-Business and IT personnel

- Facilitates seamless integration of modeling, workflow building, and simulation features
- Provides repository-based simulation, re-design reports and real-time performance measures
- Enables Internet-based workflow monitoring through standard browser interface.

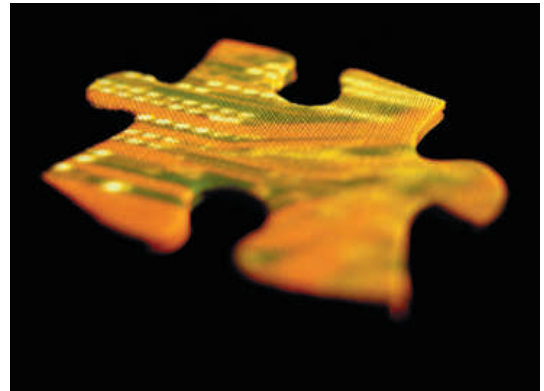
WebSphere® Business Integration Modeler and Monitor solution (formerly IBM Holosofx) helps you model, simulate, analyze, automate, and monitor complex business processes quickly and effectively. It consists of four products:

- **WebSphere Business Integration Modeler** – a bundle of WebSphere Business Integration Workbench Server and WebSphere Business Integration Workbench licenses
- **WebSphere Business Integration Workbench Server** – provides repository management and Web publishing capabilities to speed collaboration and access to process models, policies, and business rules
- **WebSphere Business Integration Workbench** – an easy-to-use process modeling tool for business managers and application developers. Its functionality extends beyond many business process modeling efforts to include analysis, redesign, application development and workflow automation
- **WebSphere Business Integration Monitor** – enables ongoing analysis of actual real-time process execution data generated by IBM WebSphere MQ Workflow to optimize business processes.

For more information - ibm.com/software/integration/manage

Connect to popular packaged software

WebSphere Adapters WNT W2000 LNX AIX SUN HP-UX



- Integrates popular packaged software with new Web-based and existing WebSphere and MQSeries applications
- Implements industry standards including J2EE Connector Architecture
- Provides integrated tooling to extend and customize adapters
- Reduces costs and time to market.

WebSphere® Adapters use open standards and integrated tooling to provide industry-leading support for Java technology-based application servers and message-based middleware. With J2EE Connector Architecture, WebSphere Adapters enable Java applications to reuse functions, data and business processes implemented in packaged application systems. When deployed in a server supporting the J2EE Connector Architecture, WebSphere Adapters allow you to use existing systems services, such as transaction management and security. Its standard J2EE connectors give you a single integration technology for both tightly and loosely coupled applications.

For more information - ibm.com/software/integration/mqfamily/adapter/

Enhance your EDI systems

WebSphere Data Interchange

W2000 AIX

Product
Update

- **Integrates EDI systems with business processes and applications**
- **Optimizes any-to-any translation of EDI, XML and application data formats**
- **Complies with data standards for EDI, including HIPAA, HL7 and other industry formats**
- **Manages transactions securely and efficiently with assured WebSphere® MQ messaging**
- **Provides GUI client for trading partner management, setting up profiles and mapping**
- **Offers easy-to-use, configurable interface to enable communication with trading partners via both VANs and Internet B2B gateways.**

WebSphere Data Interchange (WDI) V3.2 is a robust data translation and transaction management solution that can grow with your EDI or electronic commerce needs. It supports the mandatory requirements for EDI trading partner exchanges such as auditing and data content validation, as well as providing trading partner profiles, enveloping, syntactic validation and functional acknowledgment. WDI can operate as a stand-alone EDI systems, or can be integrated with other enterprise applications, either through its WebSphere MQ-based interface or through its own API.

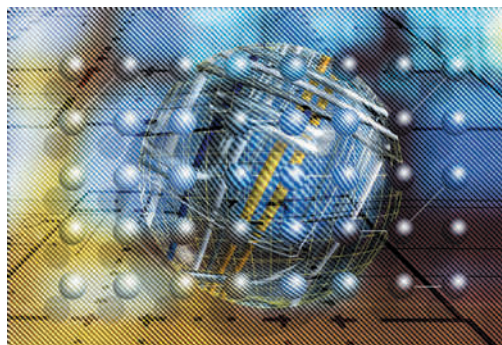
With WDI, you can leverage and enhance existing investments in your EDI systems, VAN services and partner relationships, eliminate manual processing steps, and reduce cycle time.

For more information - ibm.com/websphere/datainterchange

Gain control of enterprise identity data

IBM Directory Server and
IBM Directory IntegratorWNT W2000 AIX
SUN HP-UX LNX

New



IBM Directory Server and Directory Integrator provide you with a robust and scalable directory infrastructure for identifying enterprise resources, controlling access to networked systems and securely deploying Web Services with tools from IBM – such as Tivoli Access Manager, Tivoli Identity Manager and WebSphere e-business software – or third parties.

IBM Directory Server offers a powerful Lightweight Directory Access Protocol (LDAP) identity infrastructure as the foundation for deploying comprehensive identity management applications and advanced software architectures. Its key features include:

- Broad and robust platform support
- The reliable and scalable IBM DB2 database engine
- LDAP V3 compliance
- Compatibility with Lotus® Domino, IBM OS/400® and z/OS® directories
- Advanced replication capabilities
- No-charge download from the Web.

IBM Directory Integrator is an open-architecture, metadirectory solution for synchronizing and exchanging information realtime between applications or directory sources. It enables enterprises to establish an authoritative, up-to-date, identity data infrastructure to serve as a platform for their business critical security and Web services applications. Highlights include:

- Open architecture using Java scripts
- Connector development environment and pre-built connectors
- Event-driven and exception-handling mechanisms
- Flexible and resource-efficient architecture based on non-persistent data store.

For more information - ibm.com/software/tivoli/solutions/security/

Web access to your CICS applications

**CICS Transaction Gateway
and CICS Universal Client**

**WNT W2000 W98 W95
AIX HP-UX SUN OS2**

IBM CICS® Transaction Gateway allows users to integrate Web application servers with back-end business application systems running on CICS servers. It provides simple, efficient and scalable connectivity for most applications running on CICS servers. It:

- **Is a well-proven, high-performing and robust connector for WebSphere**
- **Offers a comprehensive security-rich environment for optimal authentication and authorization**
- **Allows a choice of application server programming models for deployment across most major execution platforms**
- **Delivers best-of-breed performance and scalability by using memory-based access to optimize connection to CICS applications**
- **Provides implementation of the J2EE Connector Architecture.**

IBM CICS Transaction Gateway Version 5 provides a robust, secure complement to a Web Server or Web Application Server, enabling access to business critical applications. It uses the latest technologies to link the open world of Web browsers on the Internet or an intranet to the power of enterprise computing and to applications running on CICS. CICS Transaction Gateway can run on the same system as the Web Server or on a separate gateway server.

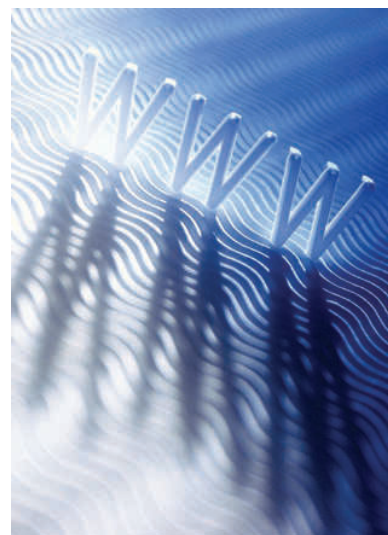
IBM CICS Universal Client Version 5 for Windows enables customers to distribute *single user* CICS access across the enterprise. CICS Transaction Gateway contains a superset of the functions offered in CICS Universal Clients V5 and may be used to support multi-user integration applications.

For more information - ibm.com/software/cics/ctg

Quickly extend legacy applications to the Web

WebSphere Host Publisher

WNT W2000 AIX SUN



- **Extends the reach of your mission-critical legacy applications, without modification, to Web users and new WebSphere® applications**
- **Supports applications written for 3270, 5250, Virtual Terminal, Java and JDBC-enabled databases**
- **Extends legacy services as new Web services**
- **J2EE compliant**
- **Delivers Enterprise JavaBean (EJB) support**
- **Provides a WebSphere Portal portlet extending legacy content as new Enterprise portal content.**

Designed for ease-of-use, WebSphere Host Publisher enables IT professionals familiar with existing applications to simply extend them to the Web. Create new composite applications that mine information from various sources without modifying your back-end systems. It also provides the high level of security you need for your Web-based environment. Host Publisher offers the scalability, flexibility and robustness of an industrial-grade Web platform coupled with tools that enable the reuse of previous work in the creation of new, sophisticated, host-linked e-business applications.

For more information - ibm.com/websphere/hostpublisher

Jumpstart your e-business

WebSphere Host Integration Solution**WNT W2000 AIX SUN****Product
Update****WebSphere® Host Integration Solution includes the latest levels of:**

- **WebSphere Host On-Demand**
- **IBM Screen Customizer**
- **WebSphere Host Publisher**
- **WebSphere Application Server, Advanced Edition**
- **WebSphere Studio, Professional Edition**
- **IBM Personal Communications[†]**
- **IBM Communications Servers**
- **WebSphere Host Access Transformation Server**
- **WebSphere Studio Site Developer.**

WebSphere Host Integration Solution provides the ability to support and effectively use intranets, extranets, and the Internet. In one total software offering it enables virtually every user to have access to your mission-critical business systems regardless of their platform or network environment. Its single pricing structure with one fixed price per registered or concurrent user allows you to choose client and server software that best meets your needs.

Detailed descriptions for many of the components of WebSphere Host Integration Solution can be found in separate product descriptions within this catalog. However, the following four software offerings are not available as separate products:

IBM WebSphere Host Access Transformation Server V4 (HATS) gives you all the tools you need to quickly and easily extend your legacy applications. It makes your 3270 and

5250 applications available through the most popular Web browsers, while at the same time converting your host screens to a Web-like look and feel. HATS' rules-based engine can make it possible to extend your host application to the Web. The power of HATS lies in its ability to accurately recognize host screens and transform them in real time to a Web interface according to set of predetermined rules. A collection of default rules is included with the product, which can be easily modified. HATS is a zero footprint Web-to-host solution – the only software needed on the client is a Web browser.

IBM Personal Communications V5.5 is a key client component of IBM's Host Integration portfolio for LAN, WAN, and remote access and connectivity (RAC). Personal Communications provides access to applications and data whether residing on mid-range or enterprise servers (mainframes). Additionally, Personal Communications can give you the optimal platform for traditional access to data and applications on the host and includes new tools to help transform your traditional business into an e-business.

WebSphere Host On-Demand V7.0 gives users security enhanced browser access to host applications and data, with Web browser-based emulation. With support for TN3270E, TN5250, VT52/100/220, and CICS® applications included in a single package, users need to learn only one interface to reach key host data. Because Host On-Demand is Java based, users in different operating environments get the same look and feel, and an identical feature set. Users may access any number of host sessions and still use their browser for other tasks. Host On-Demand is installed only on the Web server, and the Host On-Demand applet is downloaded via a Web URL to the user's Web browser.

IBM Screen Customizer V2.0.7 is an easy-to-use GUI for accessing mission-critical host data and applications via the Web. Screen Customizer offers a cost-effective, quick solution to graphically enable legacy applications for e-business, without having to rewrite business logic. Screen Customizer is a Java-based solution that runs locally on the client machine and is particularly well suited for intranet and extranet environments. It can excel in solutions where users have sustained connections and ongoing interaction with the host application.

[†] Registered – Intranet User Only

For more information - ibm.com/websphere/hostintegration

A single solution for all your host access needs

IBM Host Access Client Package

**WNT W2000 W98 W95 LNX
AIX HP-UX SUN OS2 NET**



IBM Host Access Client Package is a bundle of the following products to support all your host connection needs:

Product Update

– **IBM Personal Communications** for traditional emulation provides access to applications and data residing on IBM @server iSeries™ (5250), zSeries™ (3270), and DEC/UNIX virtual terminal (VT) hosts for traditional Web users in SNA and intranet environments

– **IBM WebSphere Host On-Demand** for browser based emulation uses thin client technology to distribute host access capability to remote users, plus users in intranet and extranet environments

– **IBM Screen Customizer** for use with Host On-Demand for a simple GUI using drag-and-drop technology without programming to front-end host information.

The three components of IBM Host Access Client Package allow you to manage your migration to Web technologies at your own pace. With one package, you can support your diverse user community and eliminate your need to work with multiple vendors. IBM Host Access Client Package provides:

– Access to applications and data residing on iSeries (5250), zSeries (3270), and DEC/UNIX virtual terminal (VT) hosts for traditional Web users in SNA and intranet environments

– Thin client technology to distribute host access capability to remote users, plus users in intranet and extranet environments

– Ability to create new GUIs to front-end host information using drag and drop technology without programming.

With the tools you can use today, you can start to build your e-business applications of the future. The IBM Host Access Client Package for iSeries V3.0 is the solution for all of your iSeries host connection needs. For those customers who need to access multiple backend host systems, the IBM Host Access Client Package for Multiplatforms V2.0 is a more appropriate solution.

For more information - ibm.com/software/network/hostaccess

Open the door to protocol independent networking

IBM Communications Servers

WNT W2000 AIX



The IBM Communications Server family offers a broad range of communications, connectivity, and networking options that let you make application decisions based on business needs, not networking protocols.

It brings you true networking even when platforms are diverse. Two versions support the most popular operating environments:

IBM Communications Server for Windows NT® and Windows 2000® V6.1.1 offers proven, secure, enterprise-class support for e-business networks. It connects users to host applications and data over SNA, TCP/IP, intranets, extranets or the Internet. It includes:

- Express Logon Function
- Extended TN3270E Capabilities
- Microsoft Windows 2000 Active Directory** Support
- SSL support, SLP service location and load balancing functions for TN Server

Communications Server for AIX, V6.1 opens the door to protocol-independent networking, with seamless, all-in-one support for workstations communicating across SNA and TCP/IP networks. Its capabilities include:

- A full-function SNA gateway
- The most Advanced Peer-to-Peer Networking system in the industry
- Support for many types of connections
- A rich set of application programming interfaces (APIs)
- Support for IBM's AIX 64-bit operating system

For more information - ibm.com/software/network/commserver

Manage data between enterprise servers and mobile devices

IBM Mobile Connect

WNT W2000

- **Integrates handheld devices into enterprise solutions easily and securely**
- **Transfers information from handheld devices to corporate systems directly-without synchronizing through PCs**
- **Enables two-way relational database synchronization, two-way file transfer and remote application installation**
- **Provides a scalable solution that combines software standards like TCP/IP and Point-to-Point Protocol (PPP) with leading handheld technologies including Windows® CE and PalmOS**

IBM Mobile Connect is a server-based data synchronization and management solution for a wide variety of businesses and enterprises. It allows you to manage and control information remotely, whether synchronizing information between mobile devices and your network server or updating software applications running on handheld devices. By integrating mobile computing into your corporate infrastructure, your users can have access to the most current information, from virtually anywhere at any time, yet security and data protection is maintained. All transfers are supported over any networking infrastructure that supports IP, i.e.: Wireless GSM, Internet, as well as standard LANs and WANs.

Two new optional components extend the functionality of Mobile Connect V3:

- **Automatic Synchronization for Mobile Connect** – automates the synchronization between handheld devices and corporate servers on a timed session basis and allows users to customize their synchronization options
- **Automatic Synchronization and Automatic Delivery for Mobile Connect** – gives wireless users a true desktop experience by allowing them to receive e-mail automatically and in real time; provides virtually instant delivery of information from the server to the mobile user

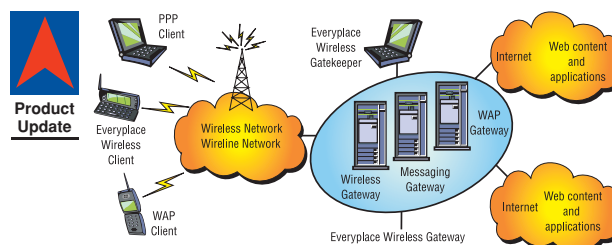
Mobile Connect V3 also offers a new pricing structure that uses a one-time-charge per registered user with a minimum of one user.

For more information - ibm.com/software/pervasive/enterprise/

Extend applications to wireless devices

WebSphere Everyplace Connection Manager

AIX SUN



WebSphere® Everyplace Connection Manager offers:

- **Seamless cross network roaming – uninterrupted connectivity to critical application**
- **Network choice – a wide selection of wireless and wired networks**
- **High security – strong authentication and support for RSA Secure ID**
- **End-to-end encryption of data – from WECM over wireless networks and to mobile devices**
- **Performance optimizations – including efficient data compression, connectivity management, and optimized session transports**
- **Scalability and reliability – supports gateway clustering, distribution across multiple sites, and High Availability Cluster Multi-processing (HACMP).**

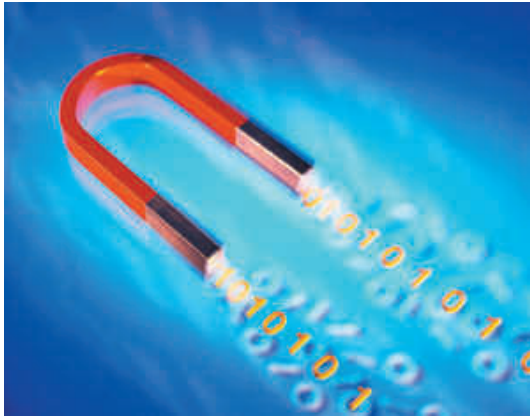
WebSphere Everyplace Connection Manager (WECM), V4.2, is a distributed, scalable, multipurpose UNIX communications platform that supports highly secure data access by both Wireless Application Protocol (WAP) and non-WAP clients over a wide range of international wireless network technologies, as well as LAN and WAN wireline networks. It integrates the WAP V1.2.1 standard support with IBM wireless technology for supporting standard Internet Protocols (IP) efficiently and securely over both IP and non-IP wireless bearer networks. WECM V4.2 includes a Secure Remote Access stack, Short Messaging Service (SMS), and a WAP stack. It integrates the supported international networks within a single UNIX gateway and provides the ability to connect radio networks to wireline networks.

For more information - ibm.com/software/pervasive/enterprise/

Optimize the wireless Web experience

WebSphere Transcoding
Publisher

WNT W2000
LNX AIX SUN



- **Dynamically extends Web content to various mobile devices including voice-only phone**
- **Supports Machine Language translation**
- **Streamlines content delivery**
- **Customizes presentation for end-users.**

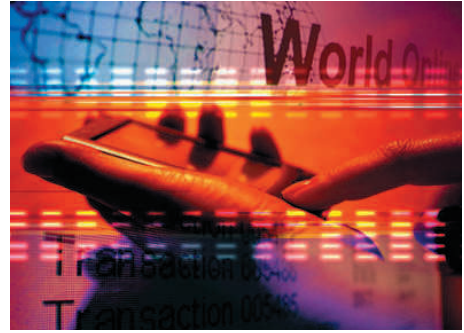
WebSphere® Transcoding Publisher (WTP) is a server-side software that dynamically adapts, reformats, and filters data so that it is optimally formatted for pervasive computing. It minimizes the need to generate and maintain multiple versions of Web content or applications to support different target devices and environments. WTP delivers a set of convenient plug-and-play content transformations along with the ability to deliver new transformations in response to new breeds of devices, emerging XML variants, and e-business trends. The flexible architecture keeps your business ahead of trends and helps ensure your data and applications continue to reach customers in the environments of the future.

For more information - ibm.com/websphere/transcoding

Personal productivity and enterprise application access anywhere, anytime

WebSphere Everyplace Access

W2000 AIX



- **Provides a complete and scalable infrastructure for extending business applications to mobile users of Palm, Pocket PC, and mobile phone devices**
- **Enables easy deployment of PIM and e-mail for Lotus Notes® and Microsoft Exchange PDA clients**
- **Supports advanced mobile user functions such as notification services and enhanced off-line access to Web content**
- **Includes DB2 Everyplace® and Lotus® Domino Everyplace Enterprise Server to enable mobile access to JDBC/ODBC-compliant databases and Domino applications**
- **Features a comprehensive application development toolkit that includes samples and a set of plugins**
- **Manages mobile devices, including device configuration, software distribution, and inventory**
- **Based on open standards and proven technologies of WebSphere Application Server and WebSphere Portal.**

WebSphere Everyplace Access (WEA) can simplify wireless for you. In one package, it delivers the technology needed to give your mobile employees access to productivity data and enterprise applications from virtually anywhere, at any time. Designed to allow you to start small and grow, WEA provides an entry-level solution while laying the foundation for a scalable infrastructure to meet your future mobile business computing requirements.

For more information - ibm.com/software/pervasive/enterprise

Compelling combination of commerce and portal capabilities

WebSphere Commerce Portal

**WNT W2000
AIX SUN**



New



- **Integrates your e-commerce Web site with highly personalized content**
- **Unifies and streamlines online information and business applications**
- **Includes commerce-enabled portlets, and existing functions of WebSphere® Portal and WebSphere Commerce.**

Built on WebSphere Portal and WebSphere Commerce software, WebSphere Commerce Portal includes all the components you need to build an integrated e-commerce portal. Its key features include:

- Personalizes to unique specific user profiles
- Gives your customers access to products, promotions, and other order status information across all your brands and partners in a consolidated view
- Integrates intra- and inter-company operations resulting in efficient and responsive handling of demand-side orders.

WebSphere Commerce Portal's streamlined approach delivers quick return on investment. It eliminates the need to build and maintain multiple sites for different user groups, increases the efficiency of customer, partner and supplier interactions, and improves customer satisfaction and retention.

For more information -
ibm.com/software/webservers/commerce/portal

Improve e-commerce effectiveness

WebSphere Commerce Analyzer Advanced Edition

WNT W2000 AIX



- **Designed for and significantly extends the analytical capabilities of WebSphere Commerce Suite (WCS) V5.1 and WebSphere Commerce V5.4**
- **Provides automated implementation - start working right from the box**
- **Allows easy-to-use data mining and custom report building**
- **Supports business-to-business functions**
- **Enables site analysis**
- **Supports end-user Web analytic reporting via BusinessObjects**
- **Includes DB2 Universal Database™, DB2 Warehouse Manager, DB2 Intelligent Miner™ for Data, IBM HTTP Server, WebSphere® Site Analyzer, WebSphere Application Server, and Business Objects programs.**

WebSphere Commerce Analyzer Advanced Ed. (WCA/Adv) V1.2 is an analytical solution that enables WCS V5.1 and WebSphere Commerce V5.4 users to understand their e-commerce operations. By integrating data mining, WCA/Adv combines complex data characterizations, relationships, and projections with visualization tools that can be used to create additional insights.

For more information - ibm.com/software/data/bi/wca

Complete e-commerce solutions for your Web sites

WebSphere Commerce Family

WNT W2000 LNX AIX SUN



WebSphere Commerce Version 5.4 is an industry leading sell-side e-commerce solution designed for both Business-to-Business (B2B) and Business-to-Consumer (B2C) environments. This flexible and adaptable application consists of a set of integrated software components that enables enterprises to build and manage personalized and individualized e-commerce sites and to create robust next generation e-commerce environments that extend beyond a storefront.

Now available on Linux in addition to AIX®, Solaris™, Windows® NT, and Windows® 2000, WebSphere® Commerce delivers award-winning customer value:

- Support to both B2C and B2B implementations
- Reliable, secure, scalable e-commerce platform ensuring flawless execution in even the most rigorous conditions
- Highly customizable and flexible development environment based on open architecture and industry standards
- Easy-to-use interfaces to create dynamic marketing campaigns, target market segments, and personalized product promotions
- Live help and Customer Care Collaboration using Lotus Sametime technology to provide real-time instant messaging, application sharing and browser re-direction
- Business intelligence to track and analyze customer behavior and purchase patterns
- Catalog content management features to build, manage and deploy sophisticated online catalogs
- Sophisticated multicultural enablement and support to sell in the global market
- Built-in payments supporting Offline, SET, CyberCash, VisaNet, and BankServACH
- Anytime, anywhere access with m-Commerce support

- Speed and depth of integration to internal and external systems as well as business processes
- Powerful capabilities to strengthen business relationships and manage business interactions
- Cost savings and rapid ROI

WebSphere Commerce is a complete, out-of-the-box, integrated solution. The infrastructure is built on key IBM technology products that are already integrated and shipped in the package. These include WebSphere Application Server, IBM HTTP Server, and DB2 Universal Database, providing a reliable, secure, and scalable foundation.

Two editions of WebSphere Commerce V5.4 are available. The Professional Edition meets the needs of most B2C businesses while the Business Edition is the appropriate platform for most B2B and Business-to-Business-to-Consumer environments – selling to consumers via distributors or resellers.

WebSphere Commerce Professional Edition

Professional Edition (WCPE) is the market leading commerce server with the breadth of capabilities to meet the needs of any retail online storefront initiative – from an entry level and up to the very sophisticated sites with personalized marketing, up-selling, cross-selling, and digital media assets.

Enhancements over previous versions of WebSphere Commerce Suite include:

- **Availability-to-Promise inventory management** – for backorder processing
- **Returns and refunds** – enables returns processing
- **Catalog management interface and editor tool**
- **Tools Framework** – enables quick implementation of a full-featured user interface with a common look and feel
- **WebSphere Commerce Recommendation Engine** – recommends items or content to site visitors based on their explicit ratings and behavior such as clickstream data and products purchased
- **Business intelligence** – helps merchants evaluate the success of campaigns, initiatives, e-marketing spots, sales and orders
- **Tax integration kit** – provides an interface to integrate tax solutions of independent software vendors
- **Store development and server administration tools**
- **Security enhancements**
- **WebSphere Payment Manager enhancements** – performance improvements, support for purchasing card and BankServACH cassette.

Complete e-commerce solutions for your Web sites

WebSphere Commerce Family (cont.)

WNT W2000 LNX AIX SUN

WebSphere® Commerce Business Edition

Business Edition (WCBE) offers additional advantages for businesses that require easy-to-implement online commerce and collaboration with their traditional and new customers and partners, through online trading relationship management and standards based integration. Business Edition also provides functionality that is specific to Business-to-Business commerce. Its key features include:

- **Live Help/Customer Care Collaboration** – utilizes Lotus Sametime technology to provide real-time instant messaging, application sharing and browser re-direction
- **Financial** – provides billing, invoicing and credit management
- **Granular access control** – allows setting up of a hierarchy of secure access to features and functions
- **Buy-side purchasing function** – includes purchase order support
- **Business relationship management** – provides intuitive browser-based business user interfaces to easily configure and modify business policies and contracts
- **Customer entitlement and contract-based commerce** – enables transactions to be based on business policies, contracts and requisition lists
- **Request for Quotation (RFQ)** – allows buyers to customize RFQ – modify, duplicate, cancel, close or submit
- **Messaging** – provides the capability to connect to external procurement systems and marketplaces
- **Online buyer/seller collaboration** – provides a contract draft and proposal discussion template based on Lotus QuickPlace
- **Advanced user and organizational management** – provides support for hierarchical organization structures and users by explicit assignment or implicit predefined grouping criteria.

WebSphere Commerce Professional Entry Edition

WebSphere Commerce Professional Entry Edition is a license-restricted version of WCPE providing an entry-level commerce solution for small and medium sized businesses. It is the same product as WCPE except for:

- Maximum of one processor, one store, and one server for production
- Sametime not included
- Support for Windows NT or Windows 2000, DB2 Universal Database Enterprise Edition, and IBM HTTP Server only.

WebSphere Commerce Studio Developer Editions

Get a quick start on developing your WebSphere Commerce Web site by using WebSphere Commerce Studio (WCStudio), Professional or Business Developer Edition, V5.4. These powerful design and development systems, based on WebSphere Studio include:

- WCPE in WCStudio, Professional Developer Edition, V5.4
- WCBE in WCStudio, Business Developer Edition, V5.4
- Tools and support for rules-based personalization
- Tools for setting up auctions
- Product Advisor tools
- Tool for building and extending Enterprise JavaBeans (EJBs).

WCStudio is available on Windows® NT and Windows® 2000, and store assets can be published to any server.

For more information - ibm.com/software/websphere/commerce

Remove language barriers to global communications and e-commerce

WebSphere Translation Server

**WNT W2000
AIX LNX SUN**

- **Translates hundreds of words per second**
- **Provides superior parsing mechanism and deep lexical analysis using state-of-the-art machine translation techniques**
- **Effects quick, inexpensive, convenient "gist" text translation**
- **Interprets specific terms or phrases for a domain or context**
- **Supports WebSphere® Application Server and various HTTP servers**
- **Integrates easily into multiple environments with attached e-mail servers and synchronous collaboration chat servers.**

Leverage your existing Web infrastructure to present content to your customers and users in their native languages, at a fraction of the cost of professional translation. With WebSphere Translation Server, you can provide Web pages, e-mail messages, and chat conversations in multiple languages, real time. You can also add your specific terms and phrases to the lexicons used by the machine translation engines. Disbursed processing and off-loading of the translation task from the HTTP, application or Sametime® servers can be achieved with WebSphere Translation Server running on a dedicated server.

For more information - ibm.com/software/voice

e-business finds its voice

WebSphere Voice Server

W2000 AIX



Product Update



- **Voice-enable your applications to wireline and wireless devices using VoiceXML and Java standards**

- **Leverage your investment in Internet-skilled resources, telephony and Web infrastructure.**

WebSphere Voice Server provides speech recognition and speech synthesis (Text-To-Speech or TTS) engines, voice application development tools and telephony platform connections to develop and deploy applications for use over telephones. Features of V3.1 include:

- New concatenative TTS engine synthesizing more natural sounding speech
- New support for WebSphere Voice Response for AIX® V3.1 and WebSphere Voice Response for Windows V3.1, in addition to existing support for Cisco and Intel Dialogic platform
- Support for Brazilian Portuguese and Canadian French, in addition to US & UK English, French, German, Italian, Spanish, Japanese, and Simplified and Traditional Chinese*
- Complimentary copies of WebSphere Voice Toolkit, WebSphere Voice Server Software Developers Kit, and WebSphere Application Server, Advanced Developer Ed.

For more information - ibm.com/pvc/products/voice/voice_server.shtml

Interactive voice response and advanced speech recognition

WebSphere Voice Response & Unified Messaging for WebSphere Voice Response**WNT W2000 AIX****Product Update**

WebSphere Voice Response (WVR) is a versatile, powerful voice processing platform specializing in Interactive Voice Response that takes information retrieval far beyond traditional "Press 1 to Continue" menus. When integrating with WebSphere Voice Server, applications can combine keypad entry with voice recognition. WVR features:

- Answer and screen a large number of calls simultaneously and promptly, reducing caller wait time
- Scalable from 2 to 480 ports depending on platform
- Support speech recognition technology, including WebSphere Voice Server

- Provide dynamic, real-time information on demand through advanced Text-to-Speech technologies, including WebSphere Voice Server
- Support VoiceXML and Java for service creation
- Support multiple connectivity and signaling environments such as T1, E1, (ISDN, CAS, SS7) and VoIP.

For use with WVR for AIX is **Unified Messaging for WebSphere Voice Response** (previously known as IBM Message Center). It is a highly scalable, flexible, and configurable solution enabling users to receive and manage voice, fax and e-mail messages.

For more information - ibm.com/pvc/enterprise

Bypass the keyboard... talk to your computer

IBM ViaVoice for Windows and ViaVoice for Macintosh**WXP W2000 W98 WMe MAC X****Digital Delivery**

■ **Dictate and edit text, speak commands for your applications and the Web using your natural voice**

■ **Noise-cancelling headset microphone included**

■ **Legal and medical vocabularies available.**

ViaVoice® for Windows, Release 10 is a suite of continuous speech products designed to appeal to every level of user – from beginners to seasoned voice recognition 'power users'. Each of the four ViaVoice for Windows Release 10 editions – Pro USB, Advanced, Standard and Personal – offers innovative features designed to make setup, dictation and voice navigation easy and efficient:

- Key Control can ensure your voice commands are not mistaken for dictation
- Large Font Option can make creating your Personal Voice model more enjoyable
- Quick Response Dictation can allow ViaVoice to respond promptly as you create text with your voice
- New speech engine for greater background noise sensitivity, dictation and command accuracy

- Fast setup including optional product enrollment
- Direct Dictation with formatting and editing into Microsoft Word products, including Word 2002.

ViaVoice® for Mac OS Edition features:

- Rebuilt from the ground up for Mac OS X
- Expandable voice command and control provided through a plug-in architecture
- "Aqua" interface/look-and-feel
- Fast enrollment
- Dictation into many text-based Mac applications

ViaVoice® Simply Dictation for Mac OS X, an entry-level, ready-to-use dictation-centric product, is also available.

For more information - ibm.com/software/speech

Bring voice control and on-the-go translation to your PDA

ViaVoice Translator and
ViaVoice Mobility Suite

WCE PPC



Digital
Delivery



ViaVoice® Translator

ViaVoice Translator offers real-time translation of English words and sentences to and from French, Italian, German or Spanish on a PDA. ViaVoice Translator:

- Provides pop-up starter sentences for quick access to common phrases
- Allows user text-entered words, phrases and sentences
- Reads back translated text as it appears on the screen
- Supports iPAQ handheld computers.

ViaVoice® Mobility Suite

ViaVoice Mobility Suite allows you to use simple, natural voice commands instead of a stylus to operate many of the common PDA functions.

It features:

- Support for US and UK English, French, German, Italian, and Spanish
- Global Commands – What can I say?, What time is it?, Power off
- Inbox (email) Commands – Read new mail, Next message, Send reply
- Calendar/Appointments Commands – Read appointments for Thursday, What is the start time?, What is the duration?
- Contact Commands – What is Jim Smith's business phone?, What is Jim Smith's email address?
- Task Commands – Read active tasks, What is the due date?, What is the status?

For more information - ibm.com/viavoice

Speech enable your e-business portal environment

WebSphere Voice
Application Access

W2000 AIX



New

■ Provides a voice portal framework that uses voice recognition technology to link telephone callers to enterprise data and applications

■ Aggregates a broad spectrum of information including e-mail, address book, calendar, Web content, and e-business applications by interacting with corporate information

■ Uses open-standard programming languages (VoiceXML and Java) to create voice-enabled applications that will interoperate with Web servers and databases

■ Toolkit that uses WebSphere Studio.

IBM WebSphere Voice Application Access V4.1 is a speech middleware software product that extends the WebSphere portal infrastructure and programming model to voice. It provides a voice portal framework that allows enterprises to deliver information to mobile employees using voice as the interface. Its voice recognition technology can link telephone callers to enterprise data and applications that were previously accessible only via computer screens, keyboards, and PDAs. Since WebSphere Voice Application Access is built around the portal framework, users can access personalized content from a single point of entry and navigate to various voice portlets using voice commands.

WebSphere Voice Application Access includes all the necessary software to deploy a voice portal infrastructure. WebSphere Voice Application Access V4.1 includes:

- WebSphere Portal software which runs the voice access portlets
- WebSphere Voice Server V3.1 software needed for configuring a voice server running U.S. English or U.K. English IBM speech recognition and text-to-speech technology
- Telephony connection environments for WebSphere Voice Server such as WebSphere Voice Response, Cisco, and Dialogic
- Development toolkit and runtimes necessary to configure a development environment to create, test, and debug custom voice portlets.

For more information - ibm.com/software/voice

Rational Software



Rational software

The on demand era

Your marketplace is constantly changing. To quickly adapt your business processes you need tools that allow you to answer the needs of your customers in real time. Products that help you develop and integrate all of your applications to run your business more efficiently. Tools that can help build software developer proficiency and help you deliver e-business on demand.

The Rational Decision

With the recent addition of Rational to our award-winning software portfolio, IBM now offers new capabilities to help you deliver e-business on demand. Rational software provides tools that help automate and accelerate the many steps involved in software development, including requirements and analysis, visual modelling, automated testing and change management. These tools unify your development team with a common process and time-tested approach to building software. The result? A more efficient, time-saving development cycle – leading to improved business processes.

The Rational platform encourages your team to:

- Adopt iterative development practices that reduce project risk
- Focus on architecture, to develop more resilient systems
- Effectively manage change and protect critical strategic assets.

Process made practical

Rational Unified Process® (RUP®) is an industry-wide platform for process guidance. With its flexible and extensible framework, RUP combines a core set of industry-proven best practices with optional process Plug-ins to support projects of any size or scope. All types of projects, including small, Web-based, mission-critical and embedded projects can realise more predictable results by implementing RUP.

Unified tools for the project team

IBM Rational tools offer unprecedented automation and ease of use. They span Windows, UNIX, Linux, and mainframe platforms and support a host of languages, IDEs, and operating environments, including: Java, Eclipse, C/C++/C#, Visual Basic .NET, Microsoft .NET, COM/+, CORBA, more than 100 cross-development environments for real-time and embedded system developers, and emerging Internet/Web services standards.

Services for accelerated implementation

Rational Services work closely with you to improve your software development capability and accelerate your success. Our services encompass worldwide consulting, deployment and QuickStart packages, technical support, and a wealth of online knowledge and training resources. Rational Developer Network™ delivers online content, training, topical discussions, and artifacts tailored exclusively for the worldwide community of development professionals who use IBM Rational tools and best practices.

Rational software

The Rational Suite® product family

Rational products are available in stand-alone and integrated Rational Suite editions. Each Rational Suite combines integrated practitioner tools with the Rational Team Unifying Platform to enhance team collaboration. The IBM Rational XDE™ family complements Rational Suite by providing an eXtended Development Experience for design, development, and testing of Java™ and .NET applications, including Web-centric solutions.

- IBM Rational Suite AnalystStudio® – problem analysis and requirements management
- IBM Rational Suite DevelopmentStudio – model-driven development and developer testing
- IBM Rational Suite DevelopmentStudio RealTime – embedded systems model-driven development and developer testing
- IBM Rational Suite TestStudio® – functionality, reliability, and performance testing
- IBM Rational Suite Enterprise – for the practitioner who spans multiple functional areas.

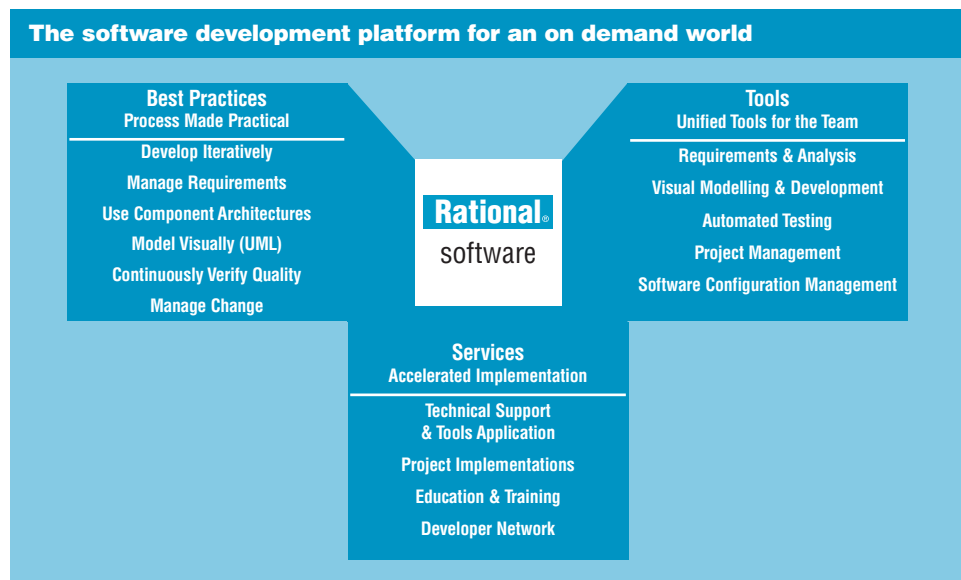
The IBM Rational XDE family

- IBM Rational XDE Developer – model-driven development and runtime analysis of Java and .NET software
- IBM Rational XDE Tester – automated Java and Web application testing
- IBM Rational XDE Modeler – visual modeling of Java and .NET software.

Individual products

- IBM Rational Apex® family – Ada development for mission-critical applications

- IBM Rational ClearCase® family (Rational ClearCase, Rational ClearCase LT, and Rational ClearCase MultiSite®) – software configuration management solution*
- IBM Rational ClearQuest® family (Rational ClearQuest, Rational ClearQuest MultiSite) – flexible defect and change tracking
- IBM Rational ProjectConsole – a project Web site and metrics dashboard
- IBM Rational PurifyPlus – runtime analysis tools for developers, including Rational Purify® for runtime error detection, Rational Quantify® for performance profiling, and Rational PureCoverage® for code coverage analysis
- IBM Rational Rapid Developer – architected rapid application development and deployment of n-tier applications
- IBM Rational RequisitePro® – team-based requirements management
- IBM Rational Robot – automated functional testing
- IBM Rational Rose® family – model-driven development tool
- IBM Rational Rose RealTime – model-driven development for real-time/embedded environments
- IBM Rational SoDA® – cross-functional documentation generation
- IBM Rational TeamTest – automated performance and functional testing
- IBM Rational Test RealTime – full-spectrum testing and run-time observation tools for real-time/embedded products
- IBM Rational TestManager – open, extensible test management
- IBM Rational Unified Process® – Software engineering best practices guidance



The ultimate e-business client

IBM Lotus Notes 6WXP W2000 WNT W98
W95 Mac Mac XDigital
Delivery

■ **Provides world-class messaging and collaboration functionality to ensure end-user productivity.**

Lotus Notes® 6 is an easy-to-use, ultra-intuitive client that provides enterprise-class messaging and collaboration functionality to ensure users stay productive – online or off. Notes 6 offers intelligent mail management with unmatched calendaring and scheduling functionality, ensuring that users can accomplish more tasks easily and in less time. iNotes Web Access, an advanced Web client solution, offers additional flexibility with your messaging and collaboration needs.

For more information - ibm.com/lotus/notes

World-class messaging and collaboration

IBM Lotus Domino 6W2000 WNT LNX
AIX SUN OS2Digital
Delivery

■ **Lowers your total cost of ownership by reducing resource usage, increasing productivity and protecting valuable corporate data**

■ **Increases infrastructure availability with advanced reliability and security features – all with enhanced performance**

■ **Provides interoperability with your existing application servers, such as Lotus® Domino R5, IBM WebSphere server, Lotus Instant Messaging and Lotus Web Conferencing (Sametime) and Lotus Team Workplace (QuickPlace).**

With Lotus Domino 6 server family you can help your organization reach higher productivity returns with less time, money, bandwidth and effort. The Domino Messaging Server offers access to the superior messaging and calendaring functionality of Domino, including the partitioning feature which supports multiple instances of Domino servers on the same machine. The Domino Enterprise Server provides access to the full collaborative functions of Lotus Domino with partitioning and clustering strength. The new Domino Utility Server gives access to powerful Domino-based applications where individual mail is not required. For users of the Domino Enterprise and Utility servers, an entitlement of WebSphere Application Server Advanced Single Server Edition is provided for developing JSP applications accessing data in Notes and Domino.

For more information - ibm.com/lotus/domino

Rapidly build e-business apps

**IBM Lotus
Domino Designer 6**WXP W2000
WNT W98Digital
Delivery

■ **Rapidly create multiplatform applications to automate business processes and increase workflow efficiency.**

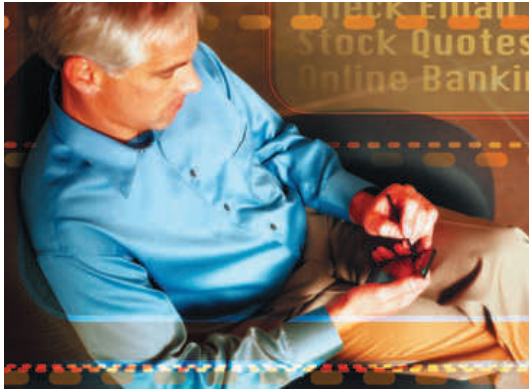
Lotus® Domino Designer 6 has a comprehensive, open development environment that helps you build and deploy applications on multiple platforms. It allows you to leverage industry-standard programming skills such as LotusScript (BASIC), Java Runtime Environment (JRE) Version 1.3, JavaScript language Version 1.4, HTML, XML, C APIs, CORBA, component object model (COM) and object-oriented programming. With Domino Designer 6, you can rapidly build any Lotus Notes and Lotus Domino collaborative application to suit your business needs.

For more information - ibm.com/lotus/dominodesigner

Extend the power of IBM Lotus Notes and Domino anywhere, anytime

**IBM Lotus EasySync Pro and
IBM Lotus Domino Everyplace**

WNT W2000



- **Wireless access to corporate e-mail and calendars**
- **Extend Domino collaborative applications to PDAs**
- **Tightly integrates with Domino administration and directory services**
- **Supports mobile phones, pagers, Palm OS, Windows CE/Pocket PC, and Symbian devices.**

IBM Lotus EasySync® Pro lets you synchronize your IBM Lotus Notes e-mail, calendar, tasks, contacts and journal information between IBM Lotus Notes and supported market-leading personal data assistants (PDAs).

IBM Lotus Domino Everyplace® software is a complete wireless solution that gives mobile IBM Lotus Notes and Domino users access to their e-mail, calendars, to-do lists, directories and other applications.

IBM Lotus Domino Everyplace Enterprise includes a robust application development environment and lets you provide both wireless and wired synchronization solutions to mobile workers easily and securely.

For more information - ibm.com/lotus/mobile

The power to work the way you want

Lotus iNotes

W2000 WNT AIX SUN



Lotus iNotes™ is a client family that includes iNotes Web Access and iNotes Access for Microsoft® Outlook. With iNotes Web Access, users can access powerful Domino messaging, collaboration, and personal information management capabilities with a Web browser. Plus, iNotes Access for Microsoft Outlook extends reliable, scalable, secure Domino messaging services to standards-based client and Microsoft Outlook users. Whatever your choice of client, iNotes provides centralized management and deployment – and unmatched off-line support.

Lotus iNotes Web Access delivers next-generation Web messaging and personal information management with an unmatched feature set and easy-to-use interface. Its key features and benefits include:

- Full off-line support through Domino Off-Line Services
- Helps reduce TCO with rapid, low-touch deployment
- Protects your environment and your information with comprehensive security features
- Integration with collaboration tools like Lotus Instant Messaging and Lotus Web Conferencing (Sametime®) and Lotus Team Workplace (QuickPlace)
- Extends messaging and collaboration services to users who may not require a full Notes client.

Lotus iNotes Access for Microsoft Outlook brings reliable, scalable Domino Messaging to Microsoft Outlook 98/2000/2002 users without changing clients. It offers additional benefits of Lotus Domino Messaging features not available with Exchange, including full text search capability for mailbox, native support for Internet standards (SMTP/MIME and HTML) and off-line support of Domino technology. Other key features and benefits include:

- Helps reduce IT costs through server consolidation and simplified administration
- Leverages Domino security to help protect your network
- Integrates smoothly with your infrastructure through supported platform flexibility
- Helps reduce network down time through optional Domino server clustering
- Allows easy, low-touch deployment.

For more information - ibm.com/lotus/inotes

Secure messaging and online meetings for the enterprise

IBM Lotus Instant Messaging & IBM Lotus Web Conferencing

WNT W2000 W98 W95



Digital
Delivery



■ **Exchange presence information and instant messages, and hold online meetings with colleagues, customers, and business partners**

■ **Securely do business over the Web**

■ **Easily extend any Web application by building real-time collaboration tools into it.**

Instant Messaging & IBM Lotus® Web Conferencing (Sametime) combines presence, awareness, secure information, instant messaging, and online Web conferencing to provide you with a whole new way to collaborate. IBM Lotus is the market leader in real-time collaboration for e-business, and offers a variety of deployment and purchase options – all based on the security and manageability that business users require. Any organization that needs to become more efficient, streamline communications, reduce travel burdens, or make faster decisions will benefit from collaborating in real time.

For more information - ibm.com/lotus/sametime

Instant team workspaces for the global enterprise

IBM Lotus Team Workplace

WNT W2000 W98 W95 SUN



Digital
Delivery

■ **Create shared and secure team workspaces – instantly!**

■ **Extend teams through the firewall**

■ **Features shared discussion area, file library, team calendar, tasks, and more**

■ **Integrates with Microsoft Office**, and member's personal calendars**

■ **Works with Lotus Instant Messaging & IBM Lotus Web Conferencing (Sametime®)**

■ **Customizable and reusable; available on five platforms and in fourteen languages.**

Lotus Team Workplace (QuickPlace®) is an award-winning self-service tool for Web-based team collaboration. Teams use Lotus Team Workplace to centrally share and organize ideas, content, and tasks around any project or ad-hoc initiative. Improve your internal and external team communication/collaboration process and efficiency, time to response and action, navigation of information, and ability for team members to participate in the planning, creation, and sharing of content and deliverables with Lotus Team Workplace.

For more information - ibm.com/lotus/quickplace

Collaborative document management

IBM Lotus Domino Document Manager

WNT W2000
AIX SUN

- **Improve organizational efficiency by managing knowledge and intellectual assets**
- **Manage the lifecycle of a document – authoring, review, approval, distribution, archiving**
- **Integrate with Lotus Workflow™ and Sametime® to provide document management in a collaborative environment.**

Lotus® Domino Document Manager (Domino.Doc) provides a secure, scalable document management system that enables you to leverage knowledge across an enterprise. Customization is supported through open architecture.

For more information - ibm.com/lotus/dominodoc

Find information experts across your organization

Lotus Discovery Server

WNT W2000
W98 WMe W95

- **Identify documents, people and places with a single search across your entire organization**
- **Increase knowledge sharing and decrease time spent on researching – all from a Web browser.**

Lotus Discovery Server™ is a comprehensive knowledge server that provides search and expertise location solutions designed to ensure that all of the relevant knowledge and collective experiences of an organization are readily available to help individuals and teams solve everyday business problems. It also includes built-in collaboration features.

For more information - ibm.com/lotus/discoveryserver

Business process automation

IBM Lotus Workflow

WNT W2000
LNX AIX SUN

- **Develop, manage, and monitor business processes**
- **Reduce costs by improving processes and response times**
- **Integrate with Domino.Doc to automate document routing and updating, and with Sametime for instant collaboration.**

Lotus Workflow™ provides a platform for automating, refining and managing complex business processes. Using Lotus Workflow, you can create applications that perform processes more quickly with fewer bottlenecks. Java APIs provide integration with WebSphere.

For more information - ibm.com/lotus/workflow

Find relevant information anywhere, anytime, fast!

IBM Lotus Extended Search

WNT W2000
AIX SUN



New

- **Search across Notes domains, legacy databases and Web sites, aggregating results in a single, ranked hit list**
- **Easily integrate into e-business applications with single sign-on.**

Lotus Extended Search is a highly scalable, server-based technology that searches across many parallel content and data sources, returning query results into either a Notes or a Web application. A Java-based administrative interface allows you to easily add support for new servers and new types of data sources. Releases 3.5 and above can work with Lotus Domino, but do not require it.

For more information - ibm.com/lotus/extendedsearch

Deliver live training over the Web

IBM Lotus Virtual Classroom

WNT W2000 W95
W98 WXP



New

Lotus Virtual Classroom is a powerful, easy to use and simple to install e-learning product that offers the ability to deliver interactive presentations to dispersed audiences through the Web. Virtual Classroom is a feature-rich, stand-alone product with the functionality needed to structure and deliver real-time training. It includes course outline tools, awareness and chat to add interactivity and to gain feedback to help gauge training effectiveness. It integrates seamlessly with the IBM Lotus Learning Management System for a complete enterprise e-learning solution. These two new Lotus e-learning products are the next generation of Lotus LearningSpace.

For more information - ibm.com/lotus/learning

Manage all of your enterprise learning needs

IBM Lotus Learning Management System

W2000 AIX
SUN LNX



New

Lotus Learning Management System (LMS) is a scalable, flexible platform for managing classroom-based and e-learning activities, resources, curriculums, and course material catalogs across the enterprise. It is a fully integrated, secure, industry-compliant learning management solution, allowing customers to deliver online classes, schedule classrooms, perform student assessments, manage student enrollment activities, and create course material. Lotus LMS streamlines the overall management of training activities, increasing efficiencies and saving time and expenses. Add the IBM Lotus Virtual Classroom module for live virtual classroom delivery. These two new Lotus e-learning products are the next generation of Lotus LearningSpace.

For more information - ibm.com/lotus/learning

A better value. A better way to work the Web

IBM Lotus SmartSuite

WNT WXP W2000 WMe
W98 W95 OS2



Product Update

■ **File filters exchange documents between Word Pro® and Microsoft Word®, 1-2-3 and Excel**, or Freelance and PowerPoint****



Digital Delivery

■ **Integrated with enterprise systems and database applications including Lotus Notes®, Lotus Domino, Oracle**, Sybase**, and IBM's WebSphere MQ, DB2, QMF, and Net.Data**

■ **Lotus SmartSuite 9.8 is the next generation all-in-one office suite solution that can help both the individual and enterprise user meet today's business demands.**

SmartSuite

SmartSuite Millennium Edition 9.8 is the award-winning desktop office suite containing Lotus 1-2-3®, Word Pro®, Freelance®, Approach®, and Organizer®. It is supported on Windows 95®, 98®, ME®, NT®, 2000, and XP. SmartSuite® 1.7 is available for OS/2. OS/2 Warp FixPak 15 or Convenience Package 1 (or higher) is required.

1-2-3

Lotus 1-2-3® Millennium Edition for Windows provides you with everything you need to find, publish and share information across the Internet and intranets. Release 9.8 delivers powerful, built-in tools for automating spreadsheet tasks and building custom business solutions. The standalone version of 1-2-3 Release 9.8 is supported on Windows 95, 98, ME, NT, 2000, and XP.

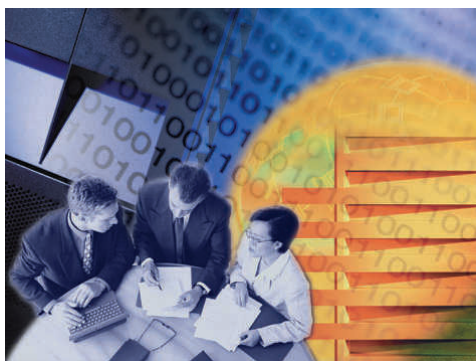
Organizer

Award-winning Lotus Organizer® R6 integrates Calendar, Contacts, To Do, Web, Notepad, Calls, Anniversary sections and scheduling, all into one convenient package. Organizer R6 also includes powerful features to help you take advantage of PDAs, cell phones and the Web.

For more information - ibm.com/lotus/smartsuite

Four important routes to business impact management

IBM Tivoli Management Solutions Overview



IBM Tivoli® solutions help you understand and proactively manage the *business impact* of your IT systems. IBM Tivoli security, storage, and systems management software uses intelligent, autonomic technology to proactively diagnose your systems, helping you better manage your e-business infrastructure for maximum business impact. It collects all of the data your systems management infrastructure generates on specific resources, usage trends, capacity and outages in a central data warehouse and analyzes it to develop business intelligence so that your IT systems are aligned with your business priorities and your technology can give you a competitive advantage and add value to the enterprise.

PERFORMANCE AND AVAILABILITY MANAGEMENT

IBM Tivoli Performance and Availability Management solutions provide the central nervous system for your complicated e-business landscape – they constantly gather information on your hardware, software and network devices, and, in many cases, cure problems before they actually occur. IBM Tivoli intelligent solutions monitor your e-business at the component, business system and enterprise levels. This technology identifies critical problems as well as misleading symptoms and effects, and then either notifies support staff with the appropriate response, or automatically cures the problem. IBM Tivoli's Performance and Availability Solutions deliver key capabilities with the following products:

- **IBM Tivoli Monitoring**
- **IBM Tivoli Monitoring for Active Directory Option**
- **IBM Tivoli Business Systems Manager**
- **IBM Tivoli Service Level Advisor**
- **IBM Tivoli Web Site Analyzer**
- **IBM Tivoli Analyzer for Lotus Domino**
- **IBM Tivoli Enterprise Console**
- **IBM Tivoli NetView**
- **IBM Tivoli Switch Analyzer**

CONFIGURATION AND OPERATIONS MANAGEMENT

The continuous strength and productivity of your e-business infrastructure is often the single determining factor between business growth and chaos. This suite of applications distributes software reliably and securely, manages the change and control of IT assets, automates workflow through the enterprise and remotely controls systems and applications. The products include:

- **IBM Tivoli Configuration Manager**
- **IBM Tivoli License Manager**
- **IBM Tivoli Remote Control**
- **IBM Tivoli Workload Scheduler**
- **IBM Tivoli Data Exchange**

SECURITY MANAGEMENT

The IBM Tivoli Security Management suite consists of integrated offerings that provide a comprehensive, scalable solution for centralized security management and access control. The IBM Tivoli approach allows businesses to realize immediate return on their e-business security investments and to consistently enforce security and privacy policies, reduce overall security administration costs, and, ultimately, increase employee productivity and customer satisfaction. Specific security needs are met with the products below:

- **IBM Tivoli Identity Manager**
- **IBM Tivoli Access Manager**
- **IBM Tivoli Privacy Manager**
- **IBM Tivoli Risk Manager**
- **IBM Tivoli Intrusion Manager**

STORAGE MANAGEMENT

IBM Tivoli Storage Management protects your data from hardware failures and other errors by storing backup and archive copies of data on offline storage. Tivoli storage products are unmatched in providing a combination of scalability, intelligent data technology, disaster preparation, and broad platform and application support, all through one centralized, automated solution. The products in this group are:

- **IBM Tivoli Storage Manager**
- **IBM Tivoli Storage Area Network Manager**
- **IBM Tivoli Storage Resource Manager**

For more information - ibm.com/tivoli

Integrated security to enable e-business

IBM Tivoli Security Solutions
WNT W2000 AIX UNIX HP-UX SUN LINUX

Product Update


IBM Tivoli® security solutions provide self-protecting autonomic security management capabilities to address two critical e-business challenges: integrated identity management and security event management.

INTEGRATED IDENTITY MANAGEMENT

This award-winning solution helps you get users, systems and applications online and productive faster, reduce costs and maximize return on investment. It can automate the management of user identities, access rights and privacy policies. To effectively manage internal users as well as an increasing number of customers and partners through the Internet, IBM Tivoli provides the only integrated solution that addresses all key areas of identity management: provisioning, access and privacy. The products include:

IBM Tivoli Identity Manager – Automates the management and provisioning of user identities across the e-business infrastructure. Helps reduce administration costs with delegated administration, centralized user account creation (including self-service interfaces), automated approvals processing that integrates with existing business processes and resource provisioning.

IBM Tivoli Access Manager for e-business – Provides single sign-on and centralized access control across a wide range of Web and application resources by supporting virtually any type of user authentication method, and controlling access to virtually any type of resource for authenticated users. Policy-based access control helps deploy applications fast while minimizing application development and administrative costs.

IBM Tivoli Access Manager for Business Integration – Enhances IBM WebSphere MQ's native security services to provide application-level data protection, without the need to modify or recompile WebSphere MQ applications.

IBM Tivoli Access Manager for Operating Systems – Strengthens security for UNIX and Linux systems. Helps prevent security violations due to unguarded privileges of “root” or “super” users and reduce costs through centralized administration across AIX, Sun Solaris, HP-UX and Linux systems.

IBM Tivoli Privacy Manager – First solution that fulfills all steps of privacy management. It helps reduce privacy compliance costs by automating manual procedures, builds trust by managing end-user consent to policy, integrates privacy policies with applications, and tracks access to sensitive information through detailed reports.

SECURITY EVENT MANAGEMENT

This award-winning solution helps you actively monitor IT resources, filter and correlate events, and automate responses to security incidents across applications, operating systems and network devices. It gives you the capability to drill down to the network topology to see where the affected resources are located and delivers true root cause problem determination. This scalable solution can centrally manage security incidents from a single security console to provide an overall view of the security architecture. The products include:

IBM Tivoli Risk Manager – Automatically manages security incidents, such as denial-of-service attacks and other forms of intrusions, and performs security change management across the enterprise.

IBM Tivoli Intrusion Manager – An entry-level product to help midsize companies quickly implement an effective solution to mitigate and manage intrusions, and help protect the network and Web servers. Tivoli Intrusion Manager provides a single event and problem management console, advanced event correlation, and reporting/analysis that allows administrators to monitor events and quickly respond to security attacks.

For more information -
ibm.com/software/tivoli/solutions/security

*Intelligent performance and monitoring tools for today's e-business***IBM Tivoli Performance and Availability Management Solutions****WNT W2000 AIX UNIX HP-UX SUN**

IBM Tivoli's performance and availability products continue to provide leadership in the changing market by transitioning customers to a proactive business impact management model that integrates Web-based architectures. The following Tivoli® products provide integrated e-business infrastructure management solutions for monitoring, event management, and business impact management:

IBM TIVOLI MONITORING – allows customers to apply pre-configured best practices out-of-the-box to automate the task of monitoring system resources, to detect bottlenecks and potential problems, and to automatically recover from critical situations. It provides the foundation for additional best practices via Proactive Analysis Components (PACs) for managing business critical hardware and software including middleware, applications, and databases.

IBM TIVOLI MONITORING ACTIVE DIRECTORY OPTION – provides an invaluable set of pre-configured, out-of-the-box automated best practices that proactively manage the directory by monitoring essential resources and detecting potential problems. IBM Tivoli Monitoring Active Directory Option also provides seamless integration with other Tivoli Performance and Availability solutions. Critical components of an Active Directory environment that are monitored include: domain controllers, replication, domain name systems, and dynamic host configuration protocol.

IBM TIVOLI MONITORING FOR APPLICATIONS – helps achieve higher availability and optimized performance of mySAP.com and Siebel eBusiness applications through effective and proactive management. It is comprised of Proactive Analysis Components, or PACs that monitor and manage a specific application area. The mySAP.com PAC is designed to manage SAP's mySAP.com e-business platform, focusing on proactive management and reporting of all key architecture components such as Web Application Servers, R/3 and mySAP applications, Portal Servers and Internet Transaction Servers. The Siebel eBusiness Applications PAC enables you to manage Siebel applications throughout the enterprise, all from a centralized console.

IBM TIVOLI MONITORING FOR BUSINESS

INTEGRATION – manages message-queuing and integration middleware, IBM WebSphere MQ and IBM WebSphere MQ Integrator, as an integral component of larger business systems - linking its management to databases, applications, and other middleware products spanning host and distributed systems. It provides IT managers with the information they need to understand the business-level impact of this middleware availability and performance. Host and distributed systems can be managed from the same desktop so systems administrators learn only one tool.

IBM TIVOLI MONITORING FOR DATABASES – consists of PACs that help ensure the availability and optimal performance of industry-leading database applications such as DB2, Informix, and Oracle. The primary objective is to provide routine, consistent monitoring and to anticipate and correct problems before database performance and customer confidence is degraded.

IBM TIVOLI MONITORING FOR MESSAGING AND COLLABORATION – as part of an integrated e-business infrastructure management solution, this product provides the monitoring tools to improve performance, availability, and administration of Lotus Domino, the industry-leading messaging and collaboration product.

IBM TIVOLI MONITORING FOR WEB

INFRASTRUCTURE – is designed to help ensure the availability and optimal performance of critical Web resources such as Web servers and Web application servers. This product captures detailed status and performance metrics from the most commonly used Web infrastructure products. It then transforms this data into useful information for Systems Administrators by applying intelligence and delivering it via an intuitive user interface and feeds a common data warehouse for historical reporting and analysis.

IBM TIVOLI MONITORING FOR TRANSACTION

PERFORMANCE – is a comprehensive Web-to-enterprise transaction performance monitoring tool. It ensures the availability and performance of e-business and enterprise transactions by measuring actual customer response times, measuring prerecorded or real transactions at regular intervals, and scanning a Web site for potential problems, such as links that do not function.

Intelligent performance and availability monitoring tools for today's business

IBM Tivoli Performance and Availability Management Solutions (cont.)

IBM TIVOLI® BUSINESS SYSTEMS MANAGER – provides a single, simple-to-use interface for consolidating management information into a business-centric view, from across your environment – including distributed, Web and mainframe components. The software is capable of automatically discovering many of the IT resources in your environment, based on the tools you are currently using to manage them. IBM Tivoli Business Systems Manager then gives you the ability to display those resources in a logical, business-oriented view – showing the particular business process served by a group of components. It:

- Provides a unique configurable business system view that allows management and control of multiple integrated software components required to deliver a specific business service

- Automatically discovers and builds graphical views of the relationships between applications

- Dynamically adjusts the business system view for components added, modified or deleted

IBM TIVOLI SERVICE LEVEL ADVISOR – simplifies the process of defining, monitoring and managing your service level agreement (SLA) service offerings. It enables you to:

- Define services from a user perspective, including response time and availability metrics

- Automate service level agreement validation and receive alerts for service level agreement violations

- Identify and fix performance and availability problems before they occur

- Provide flexible, Web-based reports to clients, executives, and IT staff.

IBM TIVOLI WEB SITE ANALYZER – is an enterprise-level Web analytics tool that transforms random Web data into valuable e-business intelligence that is designed to help you gain insights into the health and integrity of web server and web site infrastructure supporting e-business initiatives. By capturing, analyzing, storing and reporting on Web site usage, health, integrity and site content, IBM Tivoli Web Site Analyzer can shed light on visitor site interactions and the site's overall performance. It identifies performance trends and patterns of web server usage, traffic and visitor behavior in a way that helps you evaluate the impact of web-based marketing programs

IBM TIVOLI ANALYZER FOR LOTUS DOMINO – is a performance and availability management solution that integrates seamlessly into the Lotus Domino 6 Administrator client. This product helps Domino administrators provide greater server availability to their end users, more efficient utilization of Domino resources, and predictive analysis of Domino server trends to help ensure consistent performance and for use in capacity planning.

IBM TIVOLI ENTERPRISE CONSOLE – receives events from hardware, applications and network monitoring devices throughout the enterprise (both Tivoli and non-Tivoli), consolidates these events on a single, customizable console, and analyzes the events to automatically highlight the critical problems that merit attention versus the misleading symptoms and effects. Predetermined actions and/or escalations can then be initiated based on the root cause, accelerating restoration time, minimizing costs and maximizing availability.

IBM TIVOLI NETVIEW – is a network management solution that discovers TCP/IP networks, displays network topologies, correlates and manages events and SNMP traps, monitors network health and gathers performance data.

IBM Tivoli NetView accomplishes this through functionality that:

- Provides a scalable distributed management solution

- Quickly identifies the root cause of network failures

- Builds collections for management of critical business systems

- Integrates with leading vendors, such as CiscoWorks2000

- Maintains device inventory for asset management

- Measures availability and provides fault isolation for problem control and management

- Reports on network trends and analysis.

Using "SmartSets," collections of user-defined groups, IBM Tivoli NetView can manage beyond the level of device availability, allowing the customer to develop a management solution based on the entire business system. Performance monitors for TCP/IP and for SNA and TN-3270 networks are available as separate products.

IBM TIVOLI SWITCH ANALYZER – combines with IBM Tivoli NetView to deliver a fully integrated, comprehensive multi-layer network management tool based on proven market leading technology. It utilizes the existing NetView console and command set along with auto-discovery and automatic correlation of Layer-2 and Layer-2 events to determine network root cause and provide complete availability management of network devices. This powerful integration and automation significantly improves ease-of-use and minimizes the learning curve for IT staff, making time to value almost immediate.

For more information - ibm.com/tivoli/performance

*Managing complexity in dynamic e-business environments***IBM Tivoli Configuration and Operations Solutions****WNT W2000 W98 AIX HP-UX SUN**

IBM Tivoli's Configuration and Operations management solutions enable enterprise customers to reduce cost and gain automated control of e-business infrastructure while delivering reliable services to end-users to make them more productive through effective change and configuration management, and job scheduling.

This suite of applications distributes software reliably and securely, manages the change and control of IT assets, automates workflow through the enterprise and remotely controls systems and applications. The Tivoli Configuration and Operations Solutions include:

IBM TIVOLI® CONFIGURATION MANAGER – Designed for full-cycle deployment and configuration management capability, it focuses on deploying and managing software on an enterprise scale. IBM Tivoli Configuration Manager is a key solution for rapidly and efficiently deploying complex mission-critical or desktop productivity applications to multiple locations from a central point.

IBM TIVOLI LICENSE MANAGER – A powerful tool for managing software licensing, it provides advanced inventory and reporting capabilities that lets businesses know exactly what software licenses they have and what ones they might need.

IBM TIVOLI REMOTE CONTROL – The industry's first and only enterprise scale remote control product. It provides complete real-time remote control, the ability to quickly establish connections when there are thousands of potential targets, the ability to control not just desktop systems but distributed applications, and an enterprise class security model to protect against abuse.

IBM TIVOLI WORKLOAD SCHEDULER – The production automation solution for managing workloads in today's complex computing environments. It schedules, coordinates and automates mission-critical application execution across the enterprise, ensuring consistent and reliable operation on both local and remote systems. IBM Tivoli Workload Scheduler's underlying architecture ensures that business and mission-critical applications run within an infrastructure that is secure, fault-tolerant, and scalable. From a single point of control, it supports multiple platforms, from mainframes to UNIX to Windows.

IBM TIVOLI WORKLOAD SCHEDULE FOR APPLICATIONS – Extends the highly sophisticated scheduling features of IBM Tivoli Workload Scheduler to e-business application environments. It allows users to manage enterprise scheduling from a single point and supports advanced integration with enterprise applications like SAP R/3, Oracle Applications, PeopleSoft and Baan.

TIVOLI DATA EXCHANGE – Enables aggregation and distribution of business-critical information – of varied content – across all major computer platforms and network protocols. It allows organizations to rapidly, securely, and seamlessly exchange information, both within the enterprise and with business partners.

For more information - ibm.com/tivoli/configuration

Protecting and maximizing the integrity and availability of your e-business data

IBM Tivoli Storage Management Solutions

WS2003 WNT W2000 AIX HP-UX SUN LNX



IBM TIVOLI® STORAGE MANAGEMENT protects your organization's data from hardware failures and other errors by storing backup and archive copies of data on offline storage. Scaling to protect thousands of computers running a dozen OS platforms, its intelligent data movement and store techniques, and complete automation, reduce administration costs while increasing service levels.

IBM TIVOLI STORAGE MANAGER automates data backup and restore functions, supports a broad range of platforms and storage devices, and centralizes storage management operations. Able to protect hundreds of computers, running a dozen OS and connected together via the internet, WANs or LANs, Storage Manager's centralized Web-based management, smart-data-move and store techniques and comprehensive policy-based automation all work together. A number of optional modules are available, as follows:

IBM Tivoli Storage Manager for Application Servers protects the infrastructure and application data and improves the availability of WebSphere Application Servers.

IBM Tivoli Storage Manager for Databases secures Informix, Oracle and Microsoft SQL data, no matter where or how it is stored.

IBM Tivoli Storage Manager for Enterprise Resource Planning (ERP) provides automated protection of vital SAP R/3 data while reducing the CPU performance impact of data backups and restores.

IBM Tivoli Storage Manager for Hardware supports high-efficiency data backups and archives of your most business-critical applications while minimizing performance impact.

IBM Tivoli Storage Manager for Mail automates the data protection of Lotus Domino or Microsoft Exchange e-mail servers without shutting them down.

IBM Tivoli Storage Manager for Space Management (formerly known as HSM) can automatically move inactive data to less-expensive offline storage or near-line storage.

IBM Tivoli Storage Manager for Storage Area Networks allows SAN-connected Storage Manager servers and Storage Manager client computers to make maximum use of their direct network connection to storage.

IBM Tivoli Storage Manager for System Backup and Recovery provides comprehensive and flexible backup, restore and reinstallation methods for AIX systems.

IBM Tivoli Storage Manager Extended Edition expands on the data backup and restore, and managed data archive and retrieve capabilities of the base Storage Manager by adding, disaster planning capability, NDMP control for NetApps NAS filers and support for large tape libraries.

IBM TIVOLI STORAGE AREA NETWORK MANAGER is an enterprise SAN management solution based on open SAN standards. Scalable from SAN islands to complex SANs and provides broad support of IBM and non-IBM platforms and devices.

IBM TIVOLI STORAGE RESOURCE MANAGER monitors and reports on heterogeneous storage resources enterprise-wide to increase storage utilization, identify and resolve potential problems, and ensure application availability through policy-based automation. It is a premier Java and Web-based solution that includes over 300 pre-defined reports, enterprise-wide monitoring and alerts, database support and chargeback capabilities. Today's complex heterogeneous environments are supported, including DAS, NAS, and SAN.

Tivoli Storage Resource Manager for Databases enables administrators to discover problems in critical database applications, quickly pinpointing trouble spots, whether it's an individual user or specific application tablespace.

Tivoli Storage Resource Manager for Chargeback uses the storage usage information to accurately distribute data storage costs across the organization and make data users accountable.

IBM Tivoli Storage Resource Manager Express Edition offers affordably priced storage resource management for the desktop. It is designed for deployment on clients, and when used in conjunction with Tivoli Storage Resource Manager, enables a business to intelligently and cost-effectively manage a heterogeneous storage environment. **Express Edition** contains the same functionality as Tivoli Storage Resource Manager with the exception of NAS support and subsystem views.

For more information - ibm.com/tivoli/storage

Buy a lot.



Buy a little.

Either way, the benefits of Passport Advantage are big.

Get the Passport Advantage

Volume pricing. Software subscriptions. Technical support. Online access. Just a few of the ways Passport Advantage gives you ultimate flexibility and cost-efficiency in managing and maintaining your software business needs. With a Passport Advantage contract, you'll be able to:

- Decrease acquisition and administration costs by purchasing DB2, Lotus, Rational, Tivoli and WebSphere software licenses, software subscriptions, and technical support from one source – IBM – in volume.
- Facilitate migration to new platforms by using software maintenance services from IBM to simultaneously upgrade all users.
- Enhance productivity with the latest versions of IBM software.
- Lower IT expenses with access to IBM technical support – at no charge.
- Take advantage of online access to software downloads, software maintenance, customer statements, contact information and administration and more.

Subscribing to Passport Advantage is simple. Just visit ibm.com/software/passportadvantage and select *Online enrollment Tool*. While there, view the online tutorial to learn how you can maximise your Passport Advantage contract for even greater return on investment.

If you are an existing Passport Advantage customer, you can access your account online by visiting ibm.com/software/passportadvantage and selecting Customer Site. To retrieve your user name and password, email apecare@sg.ibm.com

Introducing Passport Advantage Express

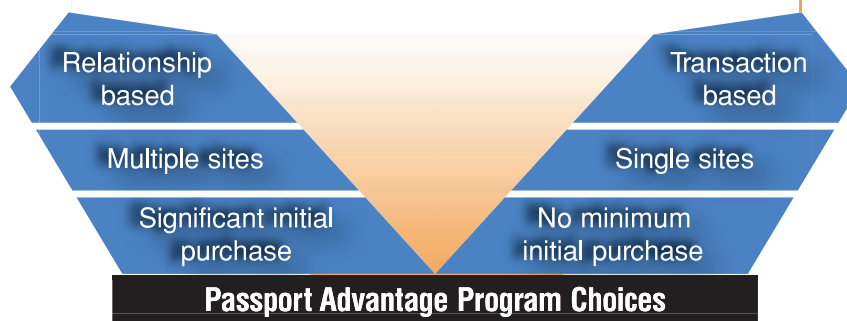
Now growing businesses don't need to buy a bundle to get big benefits. You can get the benefits of software maintenance – regardless of the number of software licenses you purchase. Passport Advantage Express is designed for single-site, medium businesses and features a single price level – there are no points and no aggregating.

Product upgrades and technical support are easy on your budget. As new versions of IBM software are released, they come under the umbrella of your existing Software Maintenance, included with your licence purchase for a full 12 months. Renewals take place on a per-transaction basis, rather than all being synchronised to a single anniversary date. That's all there is to it – simple, straightforward, easy.

For more information about Passport Advantage or passport Advantage Express, call 1300 880 150 in Australia or 0800 801 800 in New Zealand.

Passport Advantage

Passport Advantage Express



in New Zealand visit

ibm.com/software/nz/catalogue

call

0800 801 800



Software Services

IBM Software Group Services assists you in achieving excellent results and return on investment from your IBM Software solutions. Our advanced Services complement the powerful capabilities of IBM WebSphere®, DB2®, Lotus®, Rational® and Tivoli® technologies. We deliver expert technical consulting, powerful service offerings, and effective technical and end-user education.

Dedicated to the success of IBM software solutions

Our goal is to help you maximise your current investment in IBM solutions, and particularly to assist you in the deployment of our newer technologies. We have a full portfolio of services designed to meet your needs, including:

- Knowledge Management
- Mobile workforce communication plans
- Enterprise Integration Applications
- Data Management Strategies
- Systems Security, Storage, Implementations
- Total cost of ownership evaluations
- Proof of concept solutions

Services and strengths

We focus on key challenges such as deploying emerging technology, conducting migration analysis, helping to lower your total cost of ownership, and deploying IBM software to assist in improving key relationships with your employees, customers, and suppliers.

Our full range of Services falls into three main areas:

1. Technical Consulting – We deliver a broad base of expertise available by supplementing our own high-end technical consulting with services from our network of business partners who provide additional IBM software-based services.

2. Service Offerings – Our service offerings add significant intellectual capital and tools that enhance and improve a solution, such as Lotus Domino or the IBM WebSphere Portal Server. We combine best-of-breed software from IBM and key IBM Software Group business partners to help meet the specific challenges of our customers.

3. Technical and End-user Education – We offer effective training and knowledge transfer on-site, through standalone education solutions (i.e. computer-based training modules), hosted solutions, and at our global network of authorised centres. We work closely with our clients to conduct education assessments, build effective education strategies, and help maximise their use of technology.

No matter how you choose to work with IBM Software Group Services, we can provide the expert services necessary to meet today's complex technology challenges.

Leverage the full power of IBM software

To find out more about IBM Group Software Services, contact Michael Graf, ANZ Regional Director, IBM Software Group Services on 13 24 26 in Australia or 0800 801 800 in New Zealand.

C			
CICS Transaction Gateway	40	WebSphere Application Server - Express	23
Communications Servers	42	WebSphere Business Connection	35
D		WebSphere Business Integration Adapters	35
DB2 Connect	17	WebSphere Business Integration Modeler and Monitor	38
DB2 Content Manager	18	WebSphere Business Integration Server	36
DB2 Information Management Tools	10-11	WebSphere Business Integration Solutions	37
DB2 Everyplace	16	WebSphere Commerce Analyzer Advanced Edition	45
DB2 Extenders	15	WebSphere Commerce Family	46-47
DB2 Information Integrator	16	WebSphere Commerce Portal	45
DB2 Information Integrator for Content	18	WebSphere Data Interchange	39
DB2 Intelligent Miner	21	WebSphere Edge Server for Multiplatforms	24
DB2 OLAP Server	20	WebSphere Everyplace Access	44
DB2 Universal Database	8-9	WebSphere Everyplace Connection Manager	43
DB2 Warehouse Manager	19	WebSphere Host Integration Solution	41
H		WebSphere Host Publisher	40
Host Access Client Package	42	WebSphere MQ	32
I		WebSphere MQ Event Broker	33
IBM Directory Server and IBM Directory Integrator	39	WebSphere MQ Everyplace	34
IBM Records Manager	17	WebSphere MQ Family	32
Informix 4GL	14	WebSphere MQ Integrator Broker	33
Informix DataBlade Technology	12	WebSphere MQ Workflow	34
Informix Dynamic Server	13	WebSphere Personalisation for Multiplatforms	25
Informix OnLine 5 Extended Edition	13	WebSphere Portal Development Community	30
L		WebSphere Portal - Express	30
Linux	67	WebSphere Portal for Multiplatforms	31
Lotus Discovery Server	56	WebSphere Software Platform Overview	22
Lotus Domino 6	53	WebSphere Studio Product Family	28
Lotus Domino Designer 6	53	WebSphere Transcoding Publisher	44
Lotus Domino Document Manager	56	WebSphere Translation Server	48
Lotus EasySync Pro and Lotus Domino Everyplace	54	WebSphere Voice Application Access	50
Lotus Extended Search	56	WebSphere Voice Response & Unified Messaging for WebSphere Voice Response	49
Lotus iNotes	54	WebSphere Voice Server	48
Lotus Instant Messaging & Lotus Web Conferencing	55		
Lotus Learning Management System	57		
Lotus Notes 6	53		
Lotus SmartSuite	57		
Lotus Team WorkPlace	55		
Lotus Virtual Classroom	57		
Lotus Workflow	56		
M			
Mobile Connect	43		
O			
Office Connect	15		
Q			
Query Management Facility for Windows for DB2Workstation Databases	20		
R			
Rational Software	51		
Rational Suite	52		
Red Brick Warehouse	14		
S			
Software Services	65		
T			
Technical Training Services	65		
Tivoli Configuration and Operations Solutions	62		
Tivoli Management Solutions Overview	58		
Tivoli Performance and Availability Management Solutions	60		
Tivoli Security Solutions	59		
Tivoli Storage Management Solutions	63		
V			
ViaVoice for Windows and ViaVoice for Macintosh	49		
ViaVoice Translator and ViaVoice Mobility Suite	50		
VisualAge Enterprise Suite	25		
VisualAge Family	26		
W			
WebSphere Adaptors	38		
WebSphere Application Server	23		
WebSphere Application Server, Enterprise	24		

Subsidiaries of IBM Corporation whose trademarks require unique attribution: Lotus Development Corporation, Rational Software Corp., Tivoli Systems, Inc. The IBM e-business logo, the IBM Business Partner emblem, iSeries, pSeries, xSeries, and zSeries are all trademarks or registered trademarks of International Business Machines Corporation in the United States and/or other countries. The IBM eServer brand consists of the established IBM e-business logo with the following descriptive term "server" following it. The following terms are trademarks or registered trademarks of the IBM Corporation in the United States or other countries or both: AIX, AS/400, Business Partner, CICS, DB2, DB2 Connect, DB2 Extenders, DB2 OLAP Server, DB2 Universal Database, Developer Domain, e(logo), Everyplace, IBM, IBM (logo), ibm.com, Informix, IMS, Intelligent Miner, MQSeries, MVS, OS/390, OS/400, QMF, RS6000, Red Brick, SANergy, SecureWay, SmoothStart, S/370, S/390, ThinkPad, Tivoli, Tivoli (logo), ViaVoice, VideoCharger, VisualAge, VisualInfo, WebSphere and z/OS are denoted in their first appearance. Java and all Java-based trademarks are trademarks of Sun Microsystems, Inc in the United States, other countries, or both. UNIX is a registered trademark of The Open Group in the United States and other countries. Microsoft Products, Windows, Windows NT, and the Windows logo are trademarks of Microsoft Corporation in the United States, other countries, or both. Oracle is a registered trademark in the United States and other countries. Sybase is a registered trademark in the United States and other countries. Other company, product, and service names may be trademarks or service marks of others.

© Copyright IBM Australia Limited 2003. © Copyright IBM Corporation 2003.
ABN 79 000 024 733. All rights reserved.

IBM is clearly committed.

To Linux.
To open standards.
And to the future of your e-business success.

The Linux operating system is flexible. Scalable. Economical. No wonder IBM is so committed to it. With its non-proprietary technology, the Linux operating system allows you to leverage current investments with ease so you don't need to worry about the interoperability of future applications you may develop or use.

Actions speak louder than words

IBM doesn't just talk commitment to the Linux operating system. We prove it. With the industry's broadest portfolio of Linux-based offerings, IBM delivers the hardware, software and services you need to build an open, scalable e-business infrastructure.

DB2 information management software delivers Linux-supported database technology for e-business at an affordable cost. DB2 software allows you to access, manage and analyse all forms of information across your enterprise – regardless of platform.

WebSphere software helps deliver e-business on demand. WebSphere software products running on the Linux operating system enable you to create personalised sites, deliver content to wireless devices and integrate Linux applications with applications on any of 35 different platforms. So you can deliver information, products and services to customers and business associates when they need them, where they need them.

Tivoli software provides complete e-business infrastructure management across your enterprise to help you integrate Linux-supported applications with your existing back-end systems. And that means you can get even more value from your current investments. And spend less time reinventing the wheel when you want to deploy new applications.

Lotus software offers Web application support, Internet messaging, enterprise integration tools, tight security and workflow and administration services. With many Linux-supported products, Lotus software can help your business be highly responsive in realtime. And that can mean better customer service. Increased internal efficiency. And long-term revenue growth.



IBM continues to deliver on its commitment to develop and market Linux applications. To learn more about how IBM is driving this effort and about Linux applications currently available, visit:

ibm.com/software/nz/catalogue
ibm.com/software/au/catalogue

Middleware is Everywhere.

Can you see it?

2

1

4

3

5

IBM

KEY

1. Automatic overview of operation.
2. Automatic shipping of sale.
3. Automatic identity verification.
4. Automatic updating of inventory.
5. Automatic tracking of delivery.

MIDDLEWARE makes the on demand world on demand. And middleware is powerful IBM software like Tivoli®, DB2® and WebSphere®. Open technology that can automate it all – IBM, Microsoft®, or Oracle. Many problems can be foreseen and solved before they occur. IT resources are directed to core business needs. It helps to reduce costs. It's automation. On demand. And it makes your customers happy. Very happy.

@business on demand™. Go to ibm.com/software/automate