

# Software



**CATALOGUE**  
Australia 2002

*Your complete line of solutions for Windows, Windows NT, UNIX, Linux and OS/2*



## **DB2** Data Management Software

The DB2 and Informix portfolio delivers high performance, scalable, cross platform data management solutions powering Business Applications, Content Management and Business Intelligence. IBM Data Management provides unparalleled data integration capabilities that protect your investment and integrate enterprise information.

**visit** [ibm.com/software/au/catalogue](http://ibm.com/software/au/catalogue) **today**

Download other sections of the  
IBM Software Catalogue from  
[ibm.com/software/au/catalogue](http://ibm.com/software/au/catalogue)



## IBM Global Financing

IBM Global Financing offers a wide range of flexible financing options that can help you acquire IBM and associated Business Partner software, hardware and services. Software financing is one of the fastest growing segments of the IT financing market for the following reasons:

### 1. Match cost to benefits

The costs associated with software acquisitions are heaviest at the front end, while benefits do not fully accrue until the project is implemented. When the project is financed and structured according to your business requirements, costs and benefits can be aligned more closely.

### 2. Bring investments forward

Using your cash flow rather than your capital allows you to invest now for business advantage and conserve your capital for higher yielding core business investments.

### 3. Total Cost of Ownership

Organisations that engage a financing partner for the total solution are more likely to achieve faster return on investment and greater long-term economies.

As the world's largest information technology financier, IBM Global Financing offers customers in more than 40 countries leasing and financing solutions for hardware, software and services acquired from IBM and other vendors. Talk to us today to see how we can help you reap the above rewards.

**Call 132 426 and ask for  
IBM Global Financing**

**Visit [ibm.com/financing/au](http://ibm.com/financing/au)**

Finance IT with IBM Global Financing

#### Cross-platform compatibility

Now, in just a single glance, you can discover which software runs on which platforms. Simply refer to the alphanumeric codes.

<b>AIX</b>	= AIX*
<b>DOS</b>	= DOS
<b>HP-UX</b>	= HP-UNIX**
<b>LNx</b>	= Linux**
<b>MAC</b>	= Macintosh**
<b>MAC X</b>	= Macintosh X**
<b>NET</b>	= NetWare**
<b>NUMA-Q</b>	= NUMA-Q*
<b>OS2</b>	= OS/2* OS/2 Warp* OS/2 Warp Server
<b>SCO</b>	= SCO
<b>SUN</b>	= Sun Solaris**
<b>WMe</b>	= Windows** Millennium Edition
<b>WNT</b>	= Windows NT**
<b>W2000</b>	= Windows 2000
<b>W31</b>	= Windows 3.1 and higher
<b>W3X</b>	= All Windows 3x software
<b>W95</b>	= Windows 95
<b>W98</b>	= Windows 98
<b>W9X</b>	= All Windows 9x software
<b>UNIX</b>	= UNIX**

Download other sections of the  
IBM Software Catalogue from  
[ibm.com/software/au/catalogue](http://ibm.com/software/au/catalogue)



## *Everything you need - fast!*

### **Free delivery**

You pay no delivery fees on most products in this catalogue for standard deliveries. It means more money back into your business.

### **Backed by IBM**

Every IBM product in this catalogue is backed by an IBM Limited Warranty. See the IBM Limited Warranty for full details and limitations. Non-IBM products are provided on an 'as is' basis, but may be covered by the appropriate manufacturer's warranty.

### **Charge it!**

You can easily charge your purchase to the personal or corporate card of your choice: American Express, MasterCard or Visa.

### **Questions? We're always ready to help.**

Our Software Sales Specialists are just a phone call away with the latest product information, pre-sales advice and order placement assistance. Just **call 1300 880 150** with any questions you may have about our products and services. We'll help you select and configure the right solutions for your needs!

### **Volume licencing**

IBM offers substantial discounts for volume licencing on selected products. IBM's volume licencing program includes 24x7 telephone support for those mission critical installations, and ongoing software updates for the duration of your maintenance contract. Call one of our skilled Software Volume Licencing Specialists on **1300 880 150**.

### **Electronic Software Download**

IBM offers immediate access to selected software via ESD - Electronic Software Download. Make your selection from our wide array of products and choose the ESD product option to obtain an immediate licence and download of software code.

## *It's easy to order with IBM*

### **Phone**

**Call 1300 880 150** (Monday-Friday 8am-8pm) and you'll be connected to **ibm.com** where you can choose to be connected to an IBM Software Specialist.

### **ShopIBM on the Web**

**ibm.com/shop/au**

ShopIBM is the fast, easy, secure way to order online from IBM. Find the product you're looking for and just add it to your cart. It's that easy! You can shop online 24 hours a day (your order will be processed Monday to Friday between the hours of 8am-8pm). We accept all major credit cards.

### **Local IBM Representative**

Your local IBM Sales team will continue to support you with any IBM product you select from this catalogue.

For the sales representative nearest you,

**call 1300 880 150.**

### **Your IBM Business Partner**

You may find it convenient to order your catalogue products through your IBM Business Partner. Their knowledge of your organisation and its current computing environment may help you quickly select and install the best IBM products for your needs.

### **Passport Advantage**

Passport Advantage is IBM's comprehensive software licensing and software maintenance program that saves organisations money at every stage of software acquisition and use, everywhere in the world. Passport Advantage is the most flexible and cost-effective way for organisations to reap the benefits of volume pricing for new software, new releases of the latest technology, and technical support to keep businesses up and running. It can help lower acquisition and administrative costs, facilitate migration to new platforms, boost productivity and increase profits.

For more information visit:

**ibm.com/software/passportadvantage**

**Or call 132 426 and ask for Passport Advantage.**

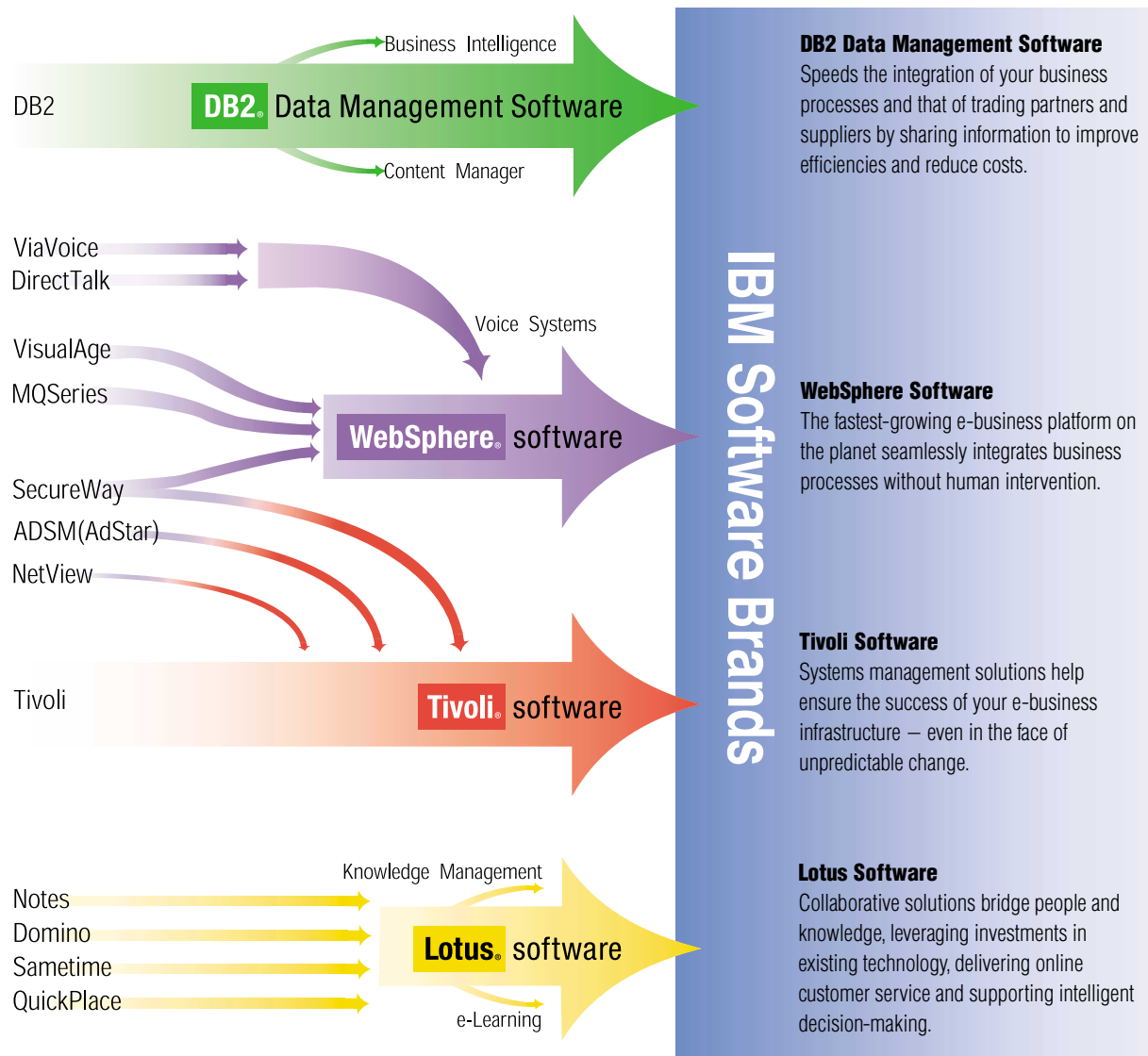
## Meet the demands of dynamic e-business with IBM software.

e-business made the move from simple Web publishing to B2C and B2B transaction processing. From integrating your systems and applications with the Web to extending them across your value chain. Where do we go from here?

Dynamic e-business. As the next step in the evolution of e-business, dynamic e-business is about flexibility. Heightened connectivity. Adapting to changes in the marketplace quickly. Efficiently. Without a huge investment of money, time or resources.

IBM is working with other industry-leading companies to establish the open standards required to create dynamic e-business. And implementing these standards in our software products so that we can provide you with the solutions you need to benefit from dynamic e-business integration.

With IBM software and dynamic e-business, you can quickly adapt your systems to keep pace with an ever-changing business environment. Create more flexible business models. Maximise the value of business processes. And drive your profitability.



call **1300 880 150** for more information or to buy **today**

# *A comprehensive guide to the IBM software your business needs to grow.*

To get greater efficiencies from your business, there's no need to scrap your current software systems, you can simply build on what you have. Especially when you're talking e-business; software is the foundation of an e-business infrastructure.

Your systems will help you gain a competitive advantage, containing customer and operational data that is priceless and growing exponentially. In a world of constant change, the ability to achieve competitive advantage, and keep it, is directly related to the flexibility of the underlying infrastructure.

IBM has completed thousands of customer engagements, working with companies such as ASX, St George Bank, Qantas and Telstra. More importantly, we've taken what we've learned in those engagements and used it to create a roadmap and a portfolio of middleware software, servers and services that can be combined to help your business.

This catalogue, developed especially for the Australian market, covers our entire spectrum of software including our four key software divisions: DB2, Lotus, Tivoli and WebSphere. If you want your business to grow, you'll find your software solution right here.

## **DB2 and Informix to manage and leverage data.**

The IBM Data Management Software and Informix portfolio provides an open, scalable, industry standard platform across NT, Windows, UNIX, Linux, OS/390 and more. Ranging from high performance, extendable database engines powering your business application, to Business Intelligence solutions leveraging your priceless data and information, and Content Management solutions for management, storage and integration of unstructured data-like documents, audio, video, images and much more.

IBM Data Management delivers unique deployment flexibility with unparalleled scalability and availability.

## **Lotus for leveraging know-how.**

By bridging the knowledge gaps in your business, you can establish the right teams, adapt to change and outpace the competition. Lotus software allows suppliers, partners, customers and employees share company information with three integrated solutions: Messaging and Collaboration, Knowledge Management and IBM MindSpan Solutions.

Lotus offers a leading portfolio of modular and standards-based software that easily integrates with other applications and operating platforms. Its distinctive solutions can help optimise your company's business transactions and the human interactions that support them.

## **Tivoli for managing complexity.**

Tivoli software from IBM enables an IT organisation to reduce the total cost of ownership and improve the service levels of their IT infrastructure. Tivoli software helps traditional enterprises and e-businesses worldwide manage security, storage, performance and availability, and configuration and operations.

Tivoli software is a global leader in systems management software, in fact, 96% of Fortune 500 companies use Tivoli products and services to efficiently manage their enterprises.

## **WebSphere for integrated infrastructure.**

IBM WebSphere is the broadest, best-integrated family of middleware in the industry. Combining application serving and integration technologies, complete customer relationship management, supply chain management, B2B and e-commerce services, WebSphere encompasses a full range of products designed to maximise your business performance.

WebSphere software gives you the tools to create a compelling Web experience for users plus enhance e-business performance. Organised into product groupings that match your specific needs, IBM WebSphere-based solutions provide your company with the flexibility to quickly transform into an adaptable, fast-growing and integrated business that can compete effectively on the Web.

## **All your software needs in the one place.**

You'll find all your IBM software solutions in this catalogue. For more information or to buy, simply call 1300 880 150 or visit [ibm.com/software/au/catalogue](http://ibm.com/software/au/catalogue)

visit [ibm.com/software/au/catalogue](http://ibm.com/software/au/catalogue) today

## *A giant leap forward in database technology*

### DB2 Universal Database

WNT W2000 W98 W95 LNX AIX HP-UX NUMA-Q SUN OS2

**DB2 Universal Database\* is the first multimedia, Web-ready relational database management system strong enough to meet the demands of large corporations and flexible enough to serve medium-sized and small businesses. DB2\* Version 7.2 has the following enhancements:**

- **MQ-Assist Wizard to help create a table function that reads from an MQSeries\* queue using the MQSeries user defined functions**
- **New Warehouse Connectors for sources such as i2, SAP R/3, web clickstream data, MQSeries message queues, and Microsoft\*\* OLEDB objects**
- **IBM ERwin MetaData Extract Program**
- **Wrappers to support distributed query access to new data sources, such as Sybase\*\* and Microsoft SQL Server, and to Oracle\*\* data from additional DB2 systems**
- **New DB2 Connect\* Web Starter Kit, a low cost Web connectivity package ideal for pilot projects**
- **DB2 Universal Developer's Edition now includes developer licenses for key data products**
- **DB2 Universal Database Text Information Extender for searching text documents with an SQL query.**

**With DB2 Universal Database Version 7.2, IBM continues its role as the database innovator in:**

#### **e-business**

DB2 Universal Database powers the most demanding e-business applications, such as electronic commerce, enterprise resource planning, customer relationship management, supply-chain management, Web self-service, and business intelligence. It adheres to all key Internet standards and includes WebSphere\*, XML extenders, and built-in Java\*\* support to make e-business application deployment fast and easy. DB2 is a scalable, industrial-strength database that can support millions of users and terabytes of data.

#### **Business Intelligence**

DB2 Universal Database means using data assets to make better business decisions. It provides data access, data analysis, and decision support to help control costs, uncover new opportunities, boost market share, and increase customer loyalty.



#### **Data Management**

DB2 Universal Database data management is more than simply running queries and applications. It offers superior data storage, quick and easy data access, thorough loss protection and complete administration support to optimise performance on your hardware and for your mix of applications.

#### **DB2 Family**

DB2 Universal Database continues to meet the demands of today's heterogeneous computing environments. It delivers open solutions that can access and integrate data from multiple, geographically separated sources on different platforms.

**There are many DB2 products to choose from:**

#### **DB2 Universal Database Personal Edition**

Provides a single-user relational database management system for your OS/2, Linux, or Windows desktop.

#### **DB2 Universal Database Workgroup Edition**

A multiuser DB2 database for applications and data shared in a workgroup or department setting on PC-based LANs.

#### **DB2 Universal Database Workgroup Unlimited Edition**

A version of Workgroup Edition for users of more than four Linux or Intel processors or more than two Unix processors.

#### **DB2 Universal Database Enterprise Edition**

A multiuser DB2 database for complex configurations and large database needs for Intel to UNIX platforms and uniprocessors to the largest SMPs.

**call 1300 880 150 for more information or to buy today**

## *A giant leap forward in database technology*

**DB2 Universal Database continued**
**WNT W2000 W98 W95 LNX AIX HP-UX NUMA-Q SUN OS2**

### **DB2 Connect**

There are three editions of DB2 Connect. More information on these products can be found on page 39.

### **DB2 Universal Database Enterprise Extended Ed.**

Provides a high-performance mechanism for complex data manipulation in large SMP and MPP-clustered server configurations on Windows NT, Sun's Solaris Operating Environment, AIX, Linux and HP-UX.

### **DB2 Connect Personal Edition**

Provides your OS/2, Linux or Windows desktop with transparent access, via direct connection, to data stored in DB2 on S/390\* or AS/400\* servers.

### **DB2 Universal Developer's Edition**

Provides all the tools required for one software developer to develop client/server applications to run on DB2 Universal Database. It also includes development licenses for DB2 Warehouse Manager, DB2 Data Links Manager, DB2 Net Search Extender, DB2 Relational Connect and DB2 Spatial Extender.

For more information [ibm.com/software/data/db2](http://ibm.com/software/data/db2)

### **The following table summarizes the functional content of each product:**

Component or Product	UDB PE	UDB WE	UDB EE	UDB EEE	CPE	CEE	PDE	UDE
Object-Relational Database Engine	Y-SU	Y-MU	Y-MU	Y-MU			Y-SU	Y-MU
Multimedia Support - DB2 Extenders	RT	RT	RT	RT	Y	Y		Y
Web-Enablement - Net.Data	Y	Y	Y	Y	Y			
Replication Support - DataPropagator Relational	Y	Y	Y	Y	Y	Y		
Extended GUI Administration Tools	Y	Y	Y	Y	Y	Y	Y	Y
Administration Client	Y	Y	Y	Y	Y			
Web-Enablement - WebSphere Application Server	Y	Y	Y	Y	Y			
Host Connectivity (DRDA*-AR) - DB2 Connect	Y	Y	Y-SU	Y	Y-SU	Y		
Application Development Clients							Y	Y

### **KEY:**

Y-Yes	SU-Single User	MU-Multiple User
PE - DB2 Personal Edition	PDE - DB2 Personal Developer's Edition	RT - Run-Time Licensing
WE - DB2 Workgroup Edition	UDE - DB2 Universal Developer's Edition	EEE - DB2 Enterprise - Extended Edition
EE - DB2 Enterprise Edition	CPE - DB2 Connect Personal Edition	CEE - DB2 Connect Enterprise Edition

## Bring the power of DB2 to mobile devices

DB2 Everyplace

WNT W2000 LNX AIX SUN



**DB2 Everyplace\* is a relational database and synchronisation server for mobile and embedded devices. It brings the power of DB2 to mobile devices and is the first enterprise mobile computing offering that provides development, deployment, and administration in one package. It includes:**

**DB2 Everyplace Database:** A relational database management system with a tiny footprint of less than 150Kb. It implements a subset of the SQL 99 standard, DB2 Call

Level Interface (CLI), Open Database Connectivity (ODBC), and Java Database Connectivity (JDBC). DB2 Everyplace also supports Type II Compact Flash storage devices such as the IBM Microdrive for higher capacity storage on mobile devices. The DB2 Everyplace database runs on Linux and embedded Linux, Palm\*\* OS, QNX Neutrino\*\*, Symbian EPOC\*\* and Windows CE.

**DB2 Everyplace Sync Server:** A bi-directional synchronisation service with conflict resolution. Sync Server was developed on industry standards that allow easy integration into your enterprise data architecture.

For more information [ibm.com/software/db2/everyplace](http://ibm.com/software/db2/everyplace)

## Extending the reach of your enterprise

IBM Informix  
DataBlade Technology

WNT W2000 LNX AIX UNIX  
HP-UX NUMA-Q SUN

- **Extends server functionality**
- **Fuels high-speed content management**
- **Empowers customisation**
- **Manages multi-media content with finesse**
- **Captures geospatial business intelligence.**

IBM Informix DataBlade Technology puts the power of the Internet directly into the IBM Informix Dynamic Server. IBM Informix DataBlade modules are server extensions that are integrated into the very core of the engine, delivering unparalleled application functionality and outstanding performance. With IBM Informix DataBlade modules, images, formatted documents, complex, time-series, video image and information html pages can all be stored, indexed and accessed directly in the relational database, providing greater security, performance, and ease of use.

**Informix Spatial DataBlade** enables you to intelligently manage complex geospatial information alongside traditional data without sacrificing the efficiency of the relational database model.

**Geodetic DataBlade** supports global space- and time-based queries without the limitations inherent in map projections, and provides high precision regardless of global location.

**TimeSeries DataBlade** provides sophisticated support for the management of time-series and temporal data.

Use a single DataBlade module, or integrate several simultaneously to create a unique information management solution customised for your needs. IBM Informix DataBlade technology today can help you make more efficient, smarter business decisions.

For more information [ibm.com/software/data/informix/blades](http://ibm.com/software/data/informix/blades)

**call 1300 880 150 for more information or to buy today**



## Unleash the power of your database

### IBM Informix Dynamic Server

WNT W2000 AIX UNIX HP-UX SCO SUN

- **Supports complex and rigorous, online transaction processing requirements**
- **Helps to optimises competitive business intelligence capabilities**
- **Helps to maximises data operations for workgroups and global enterprises**
- **Delivers high availability**
- **Offers high-performance technology**
- **Supports federated data access**
- **Provides application development and system management support.**

IBM Informix Dynamic Server 9.30 is a proven, best-of-breed database management solution. Its highlights include:

- Functionality upgrades to the IBM Informix System Administrator while maintaining ease of modification and Web-based thin client architecture
- Robust support for Spatial DataBlade 8.11
- High performance Enterprise Replication
- Improved support for DataBlade modules and development
- Java code native execution with IDS with J/Foundation
- An industry exclusive, automated “nearest neighbour” sorting of spatial data.

For more information [ibm.com/software/data/informix/ids](http://ibm.com/software/data/informix/ids)

## Scalable data warehousing for business-critical applications

### IBM Informix Extended Parallel Server

AIX UNIX HP-UX SUN



- **High-performance, flexible data warehousing enables integration of multiple traditional and Web-based business systems**
- **Scalability supports rapidly growing data volumes and users**
- **Comprehensive data management in complex, mission-critical environments promotes efficient decision making.**

IBM Informix Extended Parallel Server (XPS) is designed for the largest, most demanding, and complex data warehouse applications. By including comprehensive data warehousing features, and using a sophisticated, shared-nothing underlying architecture, XPS achieves industry-leading performance and flexibility. This allows you to make more profitable decisions from complex, query-intensive analytical applications. New to XPS 8.32 are:

- Improved administrative efficiency
- Significant usability and quality improvements making XPS more reliable and usable than ever
- Improved efficiency over older versions
- Added support for HP11.i and AIX 5.1 (32-bit).

For more information [ibm.com/software/data/informix/xps](http://ibm.com/software/data/informix/xps)

## Enhanced DB2 management products

**DB2 Data Management Tools for Multiplatforms****WNT LNX AIX HP-UX SUN**

**New and enhanced data management tools for your DB2 installations can help you effectively create and operate your application environment:**

- **DB2 Table Editor allows full screen table editing in multiple end-user environments**
- **DB2 Web Query Tool offers global data access via SQL and saves the results in multiple formats including XML.**

### **DB2 TABLE EDITOR VERSION 4.2 FOR MULTIPLATFORMS**

DB2 Table Editor is a rich toolbox providing a variety of ways to navigate, create, update or delete data. It gives you powerful table editing from within multiple end-user environments, including Java-enabled Web browsers and workstations, and Windows workstations. Working either with multi-row, row-at-a-time, or GUI forms with command buttons, data update and creation capabilities are easily rolled out to end-users with tight control over permissions and usage. Existing DB2 security at each database server is enforced, and further controls on user actions can easily be implemented with business rules and data validation built into table editing forms.

DB2 Table Editor for Multiplatforms Version 4.2 extends the capabilities of this powerful tool even further with:

#### **– Linked forms**

With DB2 Table Editor forms, developers building Windows or Java-based forms may now define linkages between forms. This allows for sets of forms to be built and linked with parent/child relationships, whether or not the data in the forms is related in the underlying DB2 table structure.

#### **– SQL command buttons**

The DB2 Table Editor form builder can now place a command button on any Windows- or Java-based form that will launch any SQL, including stored procedures.

#### **– Large Object support**

The Windows- and Java-based DB2 Table Editor interfaces now provide LOB support, and supports LOBs through forms rendered in those environments.

### **DB2 WEB QUERY TOOL VERSION 1.2 FOR MULTIPLATFORMS**

DB2 Web Query Tool is a browser-based enterprise query workbench that supports advanced query capabilities, such as multiple SQL statements and parameterised variables. It lets end users access, create, share, and execute SQL queries through their browsers against multiple IBM DB2 databases on multiple platforms. Data conversion and downloading capabilities make it easy to move data into desktop productivity applications or to other databases. Users can save query results in multiple formats including XML, and integrate query results with popular PC applications such as spreadsheets.

The newest version of DB2 Web Query Tool, Version 1.2, expands user interfaces, database platform access, and available data operations with:

- WAP and e-mail interfaces
- New data operations
- XSL support
- Multiplatform support for DB2 running on AIX, Windows, Linux, Sun Solaris and HP-UX
- Support for Web application server platforms

For more information [ibm.com/software/data/tools](http://ibm.com/software/data/tools)

**call 1300 880 150 for more information or to buy today**

## Reliable data access for efficient e-business application development

### IBM Informix Client Software Development Kit

WNT W2000 W98 W95 LNX AIX  
UNIX HP-UX NUMA-Q SUN



- **Fast application development with reduced costs**
- **Flexibility through support for open standards and familiar programming languages such as Java, C++, C and ESQL**
- **Efficient access to multiple IBM Informix databases from a single application**
- **Ease of use with single-packaged APIs.**

IBM Informix Client Software Development Kit (SDK) is a single packaging of APIs that can speed application development time for Informix servers. The Client SDK 2.70 bundle includes the following components:

- IBM Informix ESQL/C 9.51
- IBM Informix ODBC Driver 3.34 (ASCII) & 3.80 (Unicode enabled)
- IBM Informix OLEDB Provider 2.60 (Win32 only)
- IBM Informix Object Interface for C++ 2.82
- IBM Informix JDBC Driver (Type 4) 1.50
- IBM Informix JDBC Driver (Type 4) 2.20 and Informix Embedded SQLJ 1.01
- IBM Informix Connect.

For more information [ibm.com/software/data/informix/tools/csdk](http://ibm.com/software/data/informix/tools/csdk)

## Visualise and manipulate your enterprise data over the Web

### Office Connect

WNT W2000 W98 W95

- **Data visualisation and reporting for e-business**
- **Improved decision making, response and flexibility**
- **Web-based framework for secure database access and manipulation**
- **Queries HTML data sources over the Internet**
- **Leverages existing office infrastructure**
- **No additional product training or Database/SQL expertise required.**

Office Connect provides users easy, distributed and secure data visualisation and reporting capability using spreadsheet technology in client-server and Intranet/Internet environments. This solution not only works transparently with IBM and Informix Database Servers, but also with any ODBC/OLEDB/JDBC compliant database and HTML data sources.

### Office Connect Personal Edition 3.0 for Small Business

A simple, intuitive, client-server product for Excel users to bind a spreadsheet cell to a database field for retrieval and modification of data.

### Office Connect Web Edition 3.0 for Medium to Enterprise Business

- Web deployment: Web based framework to connect spreadsheets to servers running behind a firewall, for data manipulation over the Web
- Security: User access and role management
- Web query: Map data from a HTML page to a spreadsheet.

For more information [ibm.com/software/data/informix/tools/](http://ibm.com/software/data/informix/tools/)

## Enhanced functions for DB2 users

### Additional DB2 Products

WNT AIX SUN



**There are a number of separately priced products that can be added to your DB2 environment to provide even more capabilities for database users. They allow you to tailor your database environment to specifically address your business requirements. The first group of these additional members of the DB2 product family provides enhanced business intelligence functionality and include:**

#### **DB2 Spatial Extender**

DB2 Spatial Extender allows users to integrate spatial data into their business queries. It supports 13 spatial types to model real-world entities and it conforms to the OpenGIS Consortium (OGC) and ISO standards for storing, indexing, and querying spatial data. The newest version of this feature can now be hosted directly by DB2 Universal Database.

#### **DB2 Net Search Extender**

DB2 Net Search Extender provides a high performance method of searching text stored in DB2 databases. Searching with it is particularly advantageous in Internet applications where performance is an important factor. Net Search Extender can add the power of fast full-text retrieval to Net.Data, Java, and CLI applications. Its features let you store unstructured text documents of up to 2 gigabytes in databases.

#### **DB2 Data Links Manager**

This package facilitates the access of distributed data with the security and ease-of-use of the DB2 user interface. The following enhancements are introduced:

- Support for DCE Distributed File System (DFS)
- Support for Sun Solaris Operating System
- Support for archiving of linked files to Independent Solution Vendors' backup solutions
- Support for replication using the DB2 Data Propagator product

With the newest version of DB2 Data Links Manager, customers are able to use the functionality of Tivoli® Space Manager (TSM) and its virtual file system.

#### **DB2 Universal Database Text Information Extender**

This product provides a new way to search text documents using an SQL query. Supporting HTML and XML formats, it combines the power of a fast text search engine with intelligent strategies of the DB2 Optimiser. This delivers an easy-to-use, highly integrated way to search documents in your database, or external documents using DB2 Data Links Manager.

**Other DB2 products allow users to access data in DB2 and non-DB2 databases. These include:**

#### **DB2 Connect**

Provides transparent access to data in DB2 databases. See Page 39.

#### **DB2 Relational Connect**

DB2 Relational Connect is used in a federated system to query and retrieve data located on other DBMSs, such as Oracle, Sybase, Microsoft SQL Server, and other members of the DB2 Universal Database family (such as DB2 for OS/390\*). SQL statements can refer to multiple DBMSs or individual databases in a single statement. It can also be used with Data Warehouse Centre to improve select performance from Oracle sources for loading a DB2 data warehouse.

For more information [ibm.com/software/data/db2](http://ibm.com/software/data/db2)

## Transparent access to data

### DB2 Connect

WNT W2000 W98 W95 LNX OS2

- **Enables fast, secure access from the Web to enterprise data stored in both relational and nonrelational databases**
- **Provides the performance, scalability, reliability and availability needed for the most demanding e-commerce, CRM, BI, and ERP applications**
- **Provides extensive application programming tools for developing client-server and Web applications using industry standard APIs**
- **Integrates mobile PC and pervasive computing device users with up-to-date data from S/390 and AS/400 database servers.**

**DB2 Connect Personal Edition** gives you high-performance, direct access from Windows 95, 98, NT, and

2000; Linux; and OS/2 applications to S/390 and AS/400 data without gateways or host software.

**DB2 Connect Enterprise Edition** is a DB2 communication server designed to address the demanding requirements of Web and application servers needing access to S/390 and AS/400 data.

**DB2 Connect Unlimited Edition** provides both DB2 Connect Personal and Enterprise Editions.

**DB2 Connect Web Starter Kit** provides an economical way to evaluate solutions and develop applications. It contains all the DB2 Connect Enterprise Edition servers and allows unlimited use for a nine-month license period.

For more information [ibm.com/software/data/db2/db2connect](http://ibm.com/software/data/db2/db2connect)

## Access data from multiple databases

### DB2 DataJoiner

WNT AIX SUN

- **Powerful, multi-vendor database joins: With DB2 DataJoiner<sup>®</sup> V2.1.1, you only need to send one query to get the answer from different data sources. These sources include DB2, IMS<sup>†</sup>, VSAM<sup>†</sup>, Oracle, Oracle Rdb, Sybase, Sybase SQL Anywhere<sup>†</sup>, Microsoft SQL Server, Informix, and others.**

With DB2 DataJoiner Version 2.1.1, you can access and join data from different data sources with a single Structured Query Language (SQL) statement and a single interface. That single interface hides all the differences you struggle with when accessing information from different vendor databases on different vendor platforms. With the single interface of DataJoiner it's like having one big database.

<sup>†</sup> Not available with Sun's Solaris



For more information [ibm.com/software/data/datajoiner/features.html](http://ibm.com/software/data/datajoiner/features.html)

## Seamless access to non-Informix databases

**IBM Informix Enterprise Gateway Manager**

**WNT AIX  
HP-UX SUN**



**The core of IBM Informix Enterprise Gateway Manager is an SQL-based gateway that allows a customer's Informix tools, applications, and databases to interoperate transparently with non-Informix databases. Enterprise Gateway Manager helps customers migrate from or coexist in a heterogeneous environment.**

Enterprise Gateway Manager translates Informix SQL requests into ODBC-compliant function calls. Users can access data on the target DBMS from Informix client applications written products such as IBM Informix ESQL/C, using an OnLine 5.x or DSA-based engine to coordinate a distributed join. Additional features include:

- Access to non-Informix data sources through ODBC drivers that can be loaded dynamically
- Distributed joins with DB2, Informix, Oracle, and Sybase data in a single SQL statement
- Security for only authorised users
- Unrestricted connection support
- Scrolling cursor support.

For more information [ibm.com/software/data/informix/tools/egm](http://ibm.com/software/data/informix/tools/egm)

## Support for key e-business solutions

**IBM's Enterprise Content Management Infrastructure**

**e-business solutions using IBM's Enterprise Content Management Infrastructure provide application support in key areas such as:**

### **CRM**

Excellent customer service is a cornerstone of your business. Whether you use the Siebel Call Centre application or any other CRM application, IBM Content Manager can serve as a foundation for making all types of data and content available to your CSR's for one-call-and-done results. Seamless software integration and superior implementation services create a CRM environment that will keep your business on top of the heap.

[ibm.com/software/data/cm/siebel.html](http://ibm.com/software/data/cm/siebel.html)

### **ERP and SCM**

Capture, store, manage, distribute, and integrate digital content in your entire enterprise relating to critical ERP and SCM applications. Improve operational efficiencies throughout your organisation from human resources, corporate training and marketing--all the way through to transaction data storage, e-commerce catalogues, and portals for true information integration. IBM Content Manager can serve as the foundation for corporate-wide content access.

[ibm.com/software/data/cm/about.html](http://ibm.com/software/data/cm/about.html)

### **e-mail Archiving**

e-mail correspondence and attachments are growing at an unprecedented pace. How can you maintain an adequate amount of data while minimising disk space and maximising server productivity? IBM Content Manager CommonStore for Lotus Domino and CommonStore for Exchange Server provide secure, enterprise-level archiving for e-mail, e-mail attachments and Notes databases. e-mail administration has never been this easy.

[ibm.com/software/data/commonstore](http://ibm.com/software/data/commonstore)

### **Rich Media Experience**

Applications that utilise rich media are limited only by your imagination. Deliver on-demand video clips of how to fix a piece of machinery to a remote location. Use your corporate portal to deliver live, streamed executive messages on quarterly results. Give your claims processors access to photographs and audio testimonials of accident witnesses for accurate processing. All of these applications and more based on IBM's Enterprise Content Management Infrastructure.

[ibm.com/software/data/cm/cmgr](http://ibm.com/software/data/cm/cmgr)

## Content Manager: e-content for e-business solutions

IBM Content Manager

WNT W2000 AIX HP-UX SUN



The **IBM Content Manager portfolio** provides the infrastructure for true enterprise content management, to help you leverage your e-business initiatives and maximise return on investment. IBM Content Manager offerings efficiently manage and deliver content – be it business documents, statements or invoices, audio/video, XML/HTML and more.

The Content Manager portfolio includes the following offerings:

**IBM Content Manager** is designed to manage and administer any content type, providing logically organised, central and/or distributed repositories of unstructured information commonly located in file cabinets or microfilm archives, with workflow capabilities and out-of-the box Windows and browser client applications.

**IBM Content Manager OnDemand** automatically captures, manages, stores, and retrieves high volumes of printed application output – making paper and microfiche archives obsolete.

**IBM Content Manager CommonStore for SAP**, a certified solution for SAP R/3, enables enterprises to electronically archive, manage and retrieve SAP R/3 data and documents.

**IBM Content Manager CommonStore for Lotus® Domino** offloads documents and e-mails from Notes databases for long-term storage and convenient retrieval.

**IBM Content Manager CommonStore for Exchange Server®** is an e-business solution that provides users direct access to e-mail messages and attachments archived from a Microsoft Exchange 2000 server(s).

**IBM Content Manager VideoCharger** enables high quality audio and video streaming for Video on Demand, Corporate Training, or Corporate Communications.

**IBM Content Manager Entry Bundle** is a new offering that provides an affordable way for small businesses to deploy a centralised content repository, with easy user search and retrieval. It consists of "per concurrent user" licenses of:

- IBM Content Manager for Multiplatforms
- IBM Content Manager OnDemand for Multiplatforms
- IBM EIP Client Kit for Content Manager

**IBM Content Connector for Panagon® Image Services** allows IBM Content Manager and IBM Enterprise Information Portal (EIP) users to access enterprise-wide content stored in both IBM Content Manager and FileNET Panagon Image Services (IDMIS 3.5.0) servers.

**IBM Enterprise Information Portal** provides the foundation for a single point of access to both structured and unstructured, IBM or non-IBM information sources. It supports federated search across Content Manager servers. The architectural design provides the foundation and toolkit to develop connectors to additional data sources such as business applications, file systems, collaborative and relational databases.

For more information [ibm.com/software/data/cm](http://ibm.com/software/data/cm)

visit [ibm.com/software/au/catalogue](http://ibm.com/software/au/catalogue) today

*Manage and access the DB2 Data Warehouse Centre with ease*

DB2 Warehouse Manager

WNT W2000 AIX SUN OS2



**DB2 Data Warehouse Centre provides an integrated, easy-to-use infrastructure for creating and managing data warehouses. DB2 Warehouse Manager is a separately priced feature that enhances the scalability, manageability, and accessibility of the DB2 Data Warehouse Centre by providing:**

- **Superb scalability with point-to-point data movement options for distributed systems**
- **Faster deployment via common, pre-built warehouse and statistical transformations**
- **Governing functions that allow the data centre to manage query workloads**
- **Information on resource and user access history to charge-back and to pinpoint most-used data for tuning, or identify least-used data for archiving**
- **An information catalogue that helps end-users find, understand and access relevant information**
- **Enterprise reporting to develop and deliver reports to unlimited clients**
- **Three new connectors that provide access to data that is managed by applications like SAP R/3, i2 TradeMatrix BPI and webmarts.**

**DB2 Warehouse Manager includes DB2 Query Patroller, Information Catalogue, and QMF for Windows - all with expanded capabilities**

**DB2 Query Patroller:** Provides the extensive query governing that gives control to the data centre to govern queries, analyse costs, manage resources and track usage. Enhanced functions of DB2 Query Patroller now include:

- “Query trap” support on DB2 Client platforms
- Ability to trap dynamic SQL queries regardless of the API
- High availability through a retry mechanism that allows automatic restart following a database server failure.

**Information Catalogue:** Assists with finding, understanding and accessing available information by:

- Populating the catalogue by interchanging metadata with the Data Warehouse Centre and other analytical tools including 1-2-3, Brio\*\*, Business Objects, Excel\*\*, QMF for Windows and others
- Allowing users to directly register shared information objects
- Providing navigation or searching across objects to find relevant information
- Displaying the metadata about the object including name, description, contact, currency, lineage, and tools.

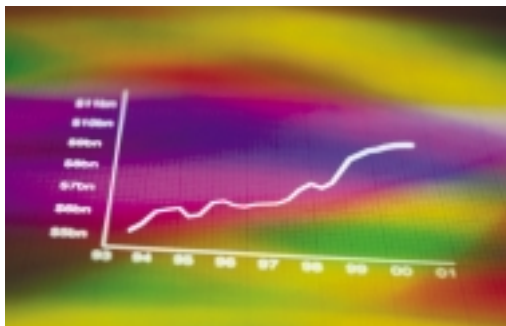
**QMF for Windows:** This is the third product integrated into DB2 Warehouse Manager. It provides a multi-purpose query tool for business reporting, data sharing, server resource protection, robust application development and native connectivity to all DB2 workstation platforms.

DB2 Warehouse Manager and Data Warehouse Centre are meant to be replacements for Visual Warehouse.

For more information [ibm.com/software/data/db2/warehouse](http://ibm.com/software/data/db2/warehouse)

**call 1300 880 150 for more information or to buy today**



*Business intelligence starts here!***IBM Query Management Facility for DB2 Workstation Databases****WNT W2000 W98 W95**

- **Simplifies query and reporting tasks**
- **Allows users to create and run QMF objects with a Java enabled browser**
- **Provides capability for visualising data spatially and with charts**

QMF for Windows is a multipurpose enterprise query environment for large-scale business reporting, data sharing and native connectivity to all of the DB2 workstation platforms, including Linux on S/390 platforms. It allows beginners or experts to formulate and share business reports. It also provides server resource protection and powerful application development, including procedures with logic using IBM Object REXX.

QMF for Windows V7.2 offers new capabilities for visualising data spatially and with charts, connection options to ODBC-compliant data sources, new administrative options, great ease of use, and significant new functions for creating and running QMF objects with Java-enabled browsers.

For more information [ibm.com/qmf](http://ibm.com/qmf)

*The platform for business analysis, planning and forecasting***DB2 OLAP Server****WNT W2000 AIX HP-UX SUN**

**DB2 OLAP Server™ V8.1, based on Hyperion Essbase XTD, provides a complete OLAP (online analytical processing) server that:**

- **Enables fast, intuitive, multidimensional data analysis**
- **Combines the high performance of Multidimensional OLAP with relational scalability**
- **Lets you exploit hardware with parallel calculation and data load**
- **Gives you a single point of administration for managing multiple OLAP Servers**
- **Allows you to integrate information from multiple data sources**
- **Offers a 100% Java™-compliant Analyser for graphical analysis and reporting**
- **Enables you to automate the discovery of atypical patterns in your cubes**

DB2 OLAP Server\* gives you a fast path to turn your warehouse data into business insight and is built for e-business with tools to help you quickly deploy Web-based analytical applications. It is a scalable, industrial-strength Online Analytical Processing (OLAP) software that enables you to build sophisticated decision support, planning, and analysis applications for your enterprise. This powerful platform, also supports all major data warehouses and is easy to integrate into any computing environment. Its leading-edge features include rapid response times in networked environments, large-scale data capacity, multi-user read/write access, flexible data navigation and linked reporting objects.

For more information [ibm.com/software/data/db2/db2olap](http://ibm.com/software/data/db2/db2olap)

## Intelligent Miner\* reveals corporate gems

**DB2 Intelligent Miner for Data**

**WNT W2000 AIX SUN**



- **Uncovers hidden patterns and predicts future behaviour enabling you to gain a competitive advantage**
- **Mines data in DB2 databases, flat files, or other relational databases via DataJoiner.**

This powerful, award-winning collection of tools arms your analysts and business technologists with superior data mining support, including data processing, statistical analysis and results visualisation capabilities.

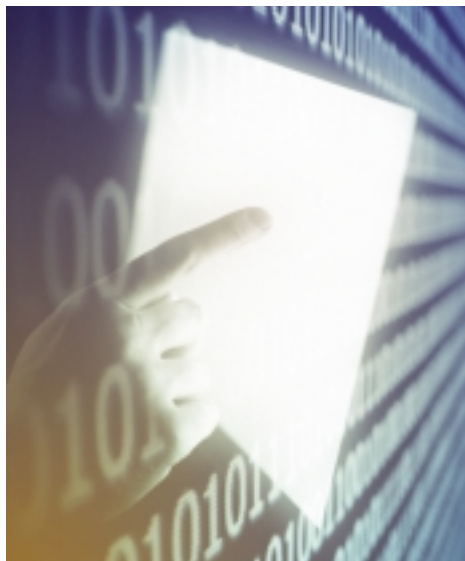
At the heart of Intelligent Miner for Data are its innovative mining algorithms that make for more intuitive and strategic decision-making. These algorithms can be used individually or in combination to address a wide range of business problems and, more importantly, deliver measurable results.

For more information [ibm.com/software/data/iminer/fordata](http://ibm.com/software/data/iminer/fordata)

## Put data mining analytics into play closer to the user

**DB2 Intelligent Miner Scoring**

**WNT W2000 LNX AIX SUN**



- **Pre-built scoring functions delivered as DB2 extenders**
- **Simple, easy-to-use SQL programming interface**
- **DB2 parallel processing for mass scoring operations**
- **DB2 for access to federated data**
- **Mining models updated without disruption to production systems**
- **Implemented to new industry standards for data mining - ISO SQL and Predictive Modeling Markup Language (PMML)**
- **Support for all DB2 Intelligent Miner for Data V6 scoring functions**
- **Oracle cartridge implementation also provided.**

Intelligent Miner Scoring enables users to leverage advanced business intelligence at the point of user contact by scoring or ranking the subject of that transaction in real time. IM Scoring can influence the handling of transactions as they occur in BI, e-Commerce and OLTP applications. This new data mining technology can help businesses develop personalised treatment for customers and suppliers, as well as offer guidance to employees for more informed decision making.

For more information [ibm.com/software/data/iminer/scoring](http://ibm.com/software/data/iminer/scoring)

**call 1300 880 150 for more information or to buy today**

## Comprehensive text analysis and search

**DB2 Intelligent Miner for Text**

**WNT AIX**



DB2 Intelligent Miner for Text offers system integrators, solution providers, and application developers a wide range of sophisticated text analysis tools; a full-text search engine enhanced with text mining functions; and a Web Crawler to enrich business intelligence, content management, and knowledge management solutions.

Intelligent Miner for Text V2.3 offers the following key features:

- **Text Analysis Tools**
  - Language identification to discover the language of a document
  - Clustering to group related documents by contents
  - Categorisation to assign documents to a set of pre-defined categories
  - Summarisation of documents
  - Feature extraction to identify key elements of free-text
- **Text Search Engine** to search textual information and to uncover related concepts with Java-based samples for GUI application development
- **Web Crawler** package consisting of a toolkit and a ready-to-run Web Crawler
- **Flexible and ready-to-use** NetQuestion Web-search Solution

For more information [ibm.com/software/data/iminer/fortext](http://ibm.com/software/data/iminer/fortext)

## Leveraging data for faster, better decision making

**IBM Red Brick Warehouse**

**WNT W2000 LNX  
AIX UNIX HP-UX SUN**



- **High-speed, high-volume query performance**
- **High-performance data management**
- **Linear scalability for unlimited growth**
- **Low cost of ownership**
- **Open standards based**
- **Simple configuration and administration.**

IBM Red Brick Warehouse is a database server designed to meet the specialised requirements for business-critical, high-demand data analysis. It provides a robust and scalable platform for developing star schema-based decision support applications, through the application of innovative technology. Designed to be practical, cost effective, and scalable, IBM Red Brick Warehouse enables more users to analyse more data and make better decisions faster than with a general-purpose database.

Building on the Red Brick history of easy implementation, low maintenance, and high performance, V6:10 and V6:11 releases include the following new features:

- Simplified summary table maintenance
- Integrated backup and restore
- Sampling
- Data loading enhancements
- Query optimisations
- Additional platform support
- Connectivity enhancements.

For more information [ibm.com/software/data/informix/redbrick](http://ibm.com/software/data/informix/redbrick)