

# Software



**CATALOGUE**  
Australia 2002

*Your complete line of solutions for Windows, Windows NT, UNIX, Linux and OS/2*



## Lotus software

Lotus provides collaborative e-business solutions that bridge people and knowledge and maximise investments in existing technology. Lotus can deliver a competitive advantage by securely bringing together people and information with its collaboration, learning and knowledge-enabling software.

visit [ibm.com/software/au/catalogue](http://ibm.com/software/au/catalogue) today

Download other sections of the IBM Software Catalogue from [ibm.com/software/au/catalogue](http://ibm.com/software/au/catalogue)



**DB2** Data Management Software

**Tivoli** software

**WebSphere** software

Other IBM Software & Solutions

# Contents

6 Lotus

## IBM Global Financing

IBM Global Financing offers a wide range of flexible financing options that can help you acquire IBM and associated Business Partner software, hardware and services. Software financing is one of the fastest growing segments of the IT financing market for the following reasons:

### 1. Match cost to benefits

The costs associated with software acquisitions are heaviest at the front end, while benefits do not fully accrue until the project is implemented. When the project is financed and structured according to your business requirements, costs and benefits can be aligned more closely.

### 2. Bring investments forward

Using your cash flow rather than your capital allows you to invest now for business advantage and conserve your capital for higher yielding core business investments.

### 3. Total Cost of Ownership

Organisations that engage a financing partner for the total solution are more likely to achieve faster return on investment and greater long-term economies.

As the world's largest information technology financier, IBM Global Financing offers customers in more than 40 countries leasing and financing solutions for hardware, software and services acquired from IBM and other vendors. Talk to us today to see how we can help you reap the above rewards.

**Call 132 426 and ask for  
IBM Global Financing**

**Visit [ibm.com/financing/au](http://ibm.com/financing/au)**

Finance IT with IBM Global Financing

#### Cross-platform compatibility

Now, in just a single glance, you can discover which software runs on which platforms. Simply refer to the alphanumeric codes.

<b>AIX</b>	= AIX*
<b>DOS</b>	= DOS
<b>HP-UX</b>	= HP-UNIX**
<b>LNx</b>	= Linux**
<b>MAC</b>	= Macintosh**
<b>MAC X</b>	= Macintosh X**
<b>NET</b>	= NetWare**
<b>NUMA-Q</b>	= NUMA-Q*
<b>OS2</b>	= OS/2* OS/2 Warp* OS/2 Warp Server
<b>SCO</b>	= SCO
<b>SUN</b>	= Sun Solaris**
<b>WMe</b>	= Windows** Millennium Edition
<b>WNT</b>	= Windows NT**
<b>W2000</b>	= Windows 2000
<b>W31</b>	= Windows 3.1 and higher
<b>W3X</b>	= All Windows 3x software
<b>W95</b>	= Windows 95
<b>W98</b>	= Windows 98
<b>W9X</b>	= All Windows 9x software
<b>UNIX</b>	= UNIX**

Download other sections of the  
IBM Software Catalogue from  
[ibm.com/software/au/catalogue](http://ibm.com/software/au/catalogue)



## *Everything you need - fast!*

### **Free delivery**

You pay no delivery fees on most products in this catalogue for standard deliveries. It means more money back into your business.

### **Backed by IBM**

Every IBM product in this catalogue is backed by an IBM Limited Warranty. See the IBM Limited Warranty for full details and limitations. Non-IBM products are provided on an 'as is' basis, but may be covered by the appropriate manufacturer's warranty.

### **Charge it!**

You can easily charge your purchase to the personal or corporate card of your choice: American Express, MasterCard or Visa.

### **Questions? We're always ready to help.**

Our Software Sales Specialists are just a phone call away with the latest product information, pre-sales advice and order placement assistance. Just **call 1300 880 150** with any questions you may have about our products and services. We'll help you select and configure the right solutions for your needs!

### **Volume licencing**

IBM offers substantial discounts for volume licencing on selected products. IBM's volume licencing program includes 24x7 telephone support for those mission critical installations, and ongoing software updates for the duration of your maintenance contract. Call one of our skilled Software Volume Licencing Specialists on **1300 880 150**.

### **Electronic Software Download**

IBM offers immediate access to selected software via ESD - Electronic Software Download. Make your selection from our wide array of products and choose the ESD product option to obtain an immediate licence and download of software code.

## *It's easy to order with IBM*

### **Phone**

**Call 1300 880 150** (Monday-Friday 8am-8pm) and you'll be connected to **ibm.com** where you can choose to be connected to an IBM Software Specialist.

### **ShopIBM on the Web**

**ibm.com/shop/au**

ShopIBM is the fast, easy, secure way to order online from IBM. Find the product you're looking for and just add it to your cart. It's that easy! You can shop online 24 hours a day (your order will be processed Monday to Friday between the hours of 8am-8pm). We accept all major credit cards.

### **Local IBM Representative**

Your local IBM Sales team will continue to support you with any IBM product you select from this catalogue.

For the sales representative nearest you,

**call 1300 880 150.**

### **Your IBM Business Partner**

You may find it convenient to order your catalogue products through your IBM Business Partner. Their knowledge of your organisation and its current computing environment may help you quickly select and install the best IBM products for your needs.

### **Passport Advantage**

Passport Advantage is IBM's comprehensive software licensing and software maintenance program that saves organisations money at every stage of software acquisition and use, everywhere in the world. Passport Advantage is the most flexible and cost-effective way for organisations to reap the benefits of volume pricing for new software, new releases of the latest technology, and technical support to keep businesses up and running. It can help lower acquisition and administrative costs, facilitate migration to new platforms, boost productivity and increase profits.

For more information visit:

**ibm.com/software/passportadvantage**

**Or call 132 426 and ask for Passport Advantage.**

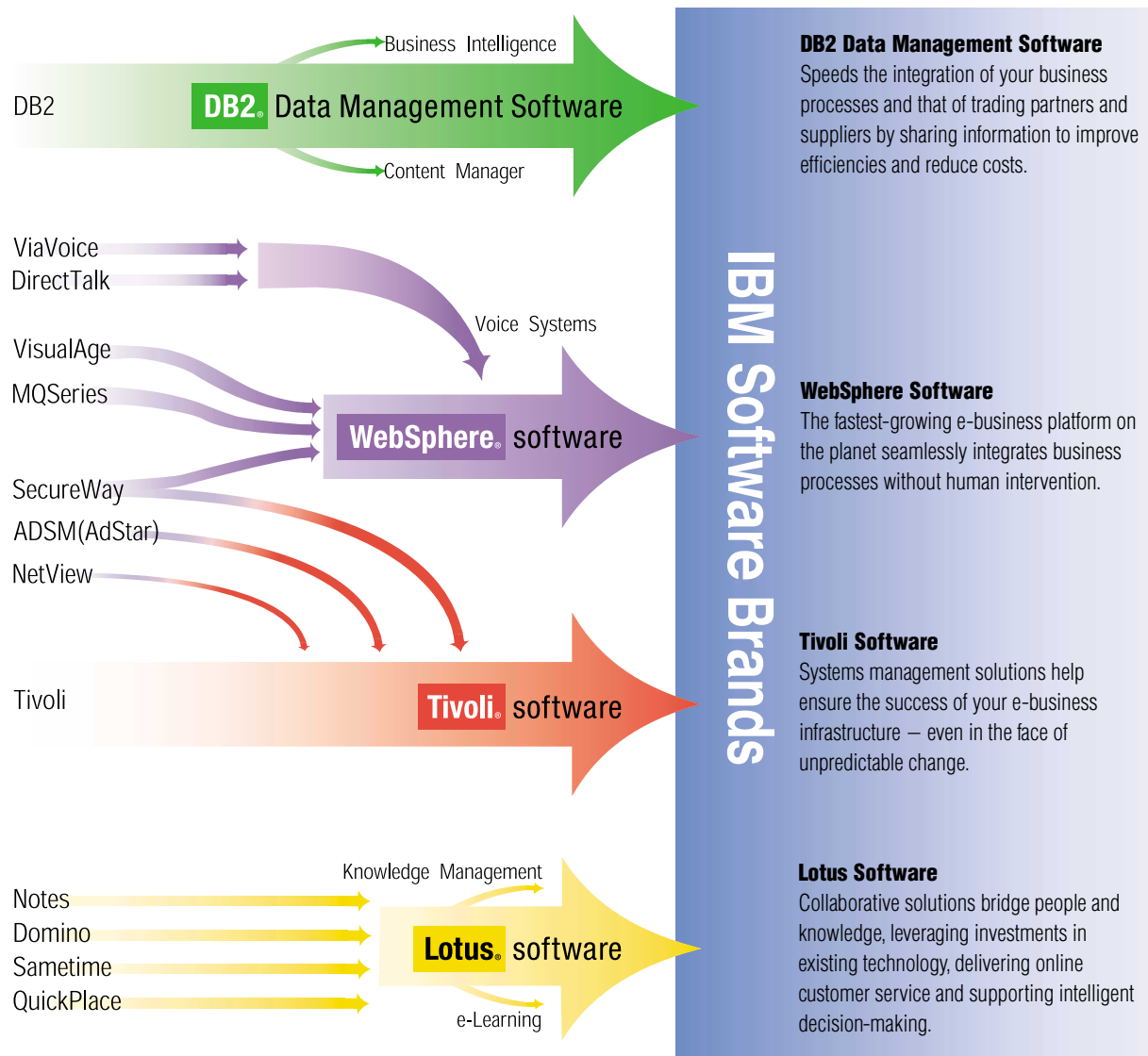
## Meet the demands of dynamic e-business with IBM software.

e-business made the move from simple Web publishing to B2C and B2B transaction processing. From integrating your systems and applications with the Web to extending them across your value chain. Where do we go from here?

Dynamic e-business. As the next step in the evolution of e-business, dynamic e-business is about flexibility. Heightened connectivity. Adapting to changes in the marketplace quickly. Efficiently. Without a huge investment of money, time or resources.

IBM is working with other industry-leading companies to establish the open standards required to create dynamic e-business. And implementing these standards in our software products so that we can provide you with the solutions you need to benefit from dynamic e-business integration.

With IBM software and dynamic e-business, you can quickly adapt your systems to keep pace with an ever-changing business environment. Create more flexible business models. Maximise the value of business processes. And drive your profitability.



call **1300 880 150** for more information or to buy **today**

# *A comprehensive guide to the IBM software your business needs to grow.*

To get greater efficiencies from your business, there's no need to scrap your current software systems, you can simply build on what you have. Especially when you're talking e-business; software is the foundation of an e-business infrastructure.

Your systems will help you gain a competitive advantage, containing customer and operational data that is priceless and growing exponentially. In a world of constant change, the ability to achieve competitive advantage, and keep it, is directly related to the flexibility of the underlying infrastructure.

IBM has completed thousands of customer engagements, working with companies such as ASX, St George Bank, Qantas and Telstra. More importantly, we've taken what we've learned in those engagements and used it to create a roadmap and a portfolio of middleware software, servers and services that can be combined to help your business.

This catalogue, developed especially for the Australian market, covers our entire spectrum of software including our four key software divisions: DB2, Lotus, Tivoli and WebSphere. If you want your business to grow, you'll find your software solution right here.

## **DB2 and Informix to manage and leverage data.**

The IBM Data Management Software and Informix portfolio provides an open, scalable, industry standard platform across NT, Windows, UNIX, Linux, OS/390 and more. Ranging from high performance, extendable database engines powering your business application, to Business Intelligence solutions leveraging your priceless data and information, and Content Management solutions for management, storage and integration of unstructured data-like documents, audio, video, images and much more.

IBM Data Management delivers unique deployment flexibility with unparalleled scalability and availability.

## **Lotus for leveraging know-how.**

By bridging the knowledge gaps in your business, you can establish the right teams, adapt to change and outpace the competition. Lotus software allows suppliers, partners, customers and employees share company information with three integrated solutions: Messaging and Collaboration, Knowledge Management and IBM MindSpan Solutions.

Lotus offers a leading portfolio of modular and standards-based software that easily integrates with other applications and operating platforms. Its distinctive solutions can help optimise your company's business transactions and the human interactions that support them.

## **Tivoli for managing complexity.**

Tivoli software from IBM enables an IT organisation to reduce the total cost of ownership and improve the service levels of their IT infrastructure. Tivoli software helps traditional enterprises and e-businesses worldwide manage security, storage, performance and availability, and configuration and operations.

Tivoli software is a global leader in systems management software, in fact, 96% of Fortune 500 companies use Tivoli products and services to efficiently manage their enterprises.

## **WebSphere for integrated infrastructure.**

IBM WebSphere is the broadest, best-integrated family of middleware in the industry. Combining application serving and integration technologies, complete customer relationship management, supply chain management, B2B and e-commerce services, WebSphere encompasses a full range of products designed to maximise your business performance.

WebSphere software gives you the tools to create a compelling Web experience for users plus enhance e-business performance. Organised into product groupings that match your specific needs, IBM WebSphere-based solutions provide your company with the flexibility to quickly transform into an adaptable, fast-growing and integrated business that can compete effectively on the Web.

## **All your software needs in the one place.**

You'll find all your IBM software solutions in this catalogue. For more information or to buy, simply call 1300 880 150 or visit [ibm.com/software/au/catalogue](http://ibm.com/software/au/catalogue)

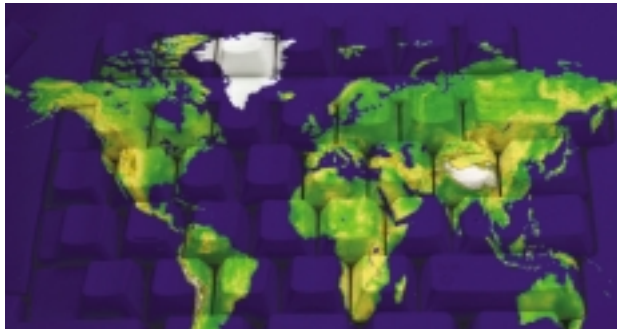
visit [ibm.com/software/au/catalogue](http://ibm.com/software/au/catalogue) today



## *Real-time collaboration that's fit for e-business*

**Lotus Sametime**

**WNT W2000 W98 W95**



As a leader in real-time collaboration for e-business, Sametime can make working with your extended team easier than ever before. Sametime goes beyond secure instant messaging, including using the Web to improve customer service, reduce travel costs, and create communities among your employees, customers, partners, and suppliers.

For more information [www.lotus.com/sametime](http://www.lotus.com/sametime)

- **Collaborate securely in real-time over the Web**
- **Instant message, share your screen, and whiteboard ideas with your colleagues through a Web browser**
- **Easily add instant messaging or application sharing to your Web site to improve customer service and create efficiencies with your extended team.**

## *Instant team workspaces for the global enterprise*

**Lotus QuickPlace**

**WNT W2000 W98 W95 SUN**

### **Features include:**

- **Task Management—including Gantt chart view summary**
- **Office 2000 integration**
- **Instant Chat**
- **Shared team calendar**
- **Customised themes and templates for specific business processes**
- **Ability to work offline**
- **Available on 5 platforms and 14 languages.**

Lotus QuickPlace is a self-service tool for Web-based team collaboration. Teams use QuickPlace to centrally share and organise ideas, content, and tasks around any project or adhoc initiative. QuickPlace improves (both internal and external) team communication/collaboration process and efficiency, time to response and action, navigation of information, and the ability of team members to participate in the planning, creation, and sharing of content and deliverables.

For more information [www.lotus.com/quickplace](http://www.lotus.com/quickplace)

**call 1300 880 150 for more information or to buy today**

## The ultimate e-business client

**Lotus Notes R5**

WNT W98 W95

- **A leading e-mail and collaboration software for the Internet**
- **Securely and easily manage information and collaborate - even when disconnected.**

Imagine the World Wide Web with its point-and-click ease plus world-class messaging and collaboration - all in an easy-to-use, customisable environment. With Lotus Notes R5, you have the best of both worlds. Notes lets you manage all your information needs in a single application - combining e-mail, calendaring, group scheduling, contact and task management, knowledge management and the Web.

For more information [www.lotus.com/notes](http://www.lotus.com/notes) or [www.lotus.com/inotes](http://www.lotus.com/inotes)

## Rich enterprise e-mail and collaboration

**Lotus Domino R5 Servers**WNT LNX AIX  
HP-UX SUN OS2

- **Integrates your company's messaging and Web application software**
- **Fosters successful collaboration with rich Internet messaging, ease of administration, integration with back-end systems and reliability**
- **The only server solutions built on an open, unified architecture.**

Meet the Domino R5 Server family. The Domino R5 Mail Server runs on your existing hardware, software, and networks and provides superior support for e-mail, Web access, online calendaring, and more. The Domino R5 Application Server lets you deliver easy-to-integrate, collaborative Web applications. The Domino R5 Enterprise Server adds high-availability clustering for mission-critical applications. In addition, the Domino R5 family features an open, unified architecture and sets new standards for reliability, Internet messaging functionality and administrative ease.

## Rapidly build e-business apps

**Lotus Domino Designer R5**

WNT W98 W95 MAC

- **Contains everything you need to create collaborative, end-to-end e-business solutions**
- **Connects Web applications to live data in relational databases, ERP applications and Transaction Processing Systems.**

Domino Designer R5 is the fast, cost-effective way to create collaborative e-business solutions. This world-class development environment includes WYSIWYG HTML authoring, site/page and frameset design, and client and server-side scripting. Lotus Domino Designer R5 gives you the power to "build locally, deploy globally".

For more information [www.lotus.com/dominodesigner](http://www.lotus.com/dominodesigner)

*A better value! A better way to work the Web!*

Lotus SmartSuite Millennium Edition

WNT W2000 W98 W95



- **File filters in SmartSuite exchange documents seamlessly to and from Freelance Graphics and PowerPoint, Word Pro and Microsoft Word, or 1-2-3 and Excel**
- **Integrated with strategic enterprise systems and database applications including Lotus Notes, Lotus Domino, SAP, PeopleSoft, Oracle, Sybase, and IBM's MQSeries, DB2, QMF, and Net.Data**
- **Lotus SmartSuite 9.6 is the next generation all-in-one office suite solution that will help both the individual and enterprise user meet today's business demands.**

#### SmartSuite

SmartSuite Millennium Edition is the award-winning desktop office suite containing Lotus 1-2-3 spreadsheet, Organiser time, information and contact manager, Word Pro word processor, Freelance Graphics presentation graphics, and Approach database. It is supported on Windows 98, ME, NT, 2000, and XP.

SmartSuite 1.7 for OS/2 is the desktop office suite containing Lotus 1-2-3 spreadsheet, Organiser time, information and contact manager, Word Pro word processor, Freelance Graphics presentation graphics, and Approach database. OS/2 Warp FixPak 15 or Convenience Package 1 (or higher) is required.

#### 1-2-3

Lotus 1-2-3 Millennium Edition for Windows combines over 15 years of computer productivity innovations into the world's most famous spreadsheet. It provides users with everything they need to find, publish and share information across the Internet and intranets right from within 1-2-3 and delivers powerful, built-in tools for automating spreadsheet tasks and building custom business solutions.

The standalone version of 1-2-3 is Release 9.5 and is supported on Windows 95, 98 and NT only. The latest version of 1-2-3 that supports Windows 98, ME, NT, 2000, and XP is available only as part of SmartSuite 9.7.

#### Organiser

Award-winning Lotus Organiser R6 integrates an on-screen Calendar, Contacts, To Do, Web, Notepad, Calls, Anniversary sections and Internet scheduling, all into one convenient package. Organiser R6 includes a host of powerful features to help you take advantage of the latest business technologies – like PDAs, cell phones and the Web.

The standalone version of Organiser is Release 6 and is supported on Windows 95, 98 and NT only. The version of Organiser in SmartSuite 9.7 supports current operating systems such as Windows ME, 2000, and XP. This version is only available as part of SmartSuite 9.7.

For more information [www.lotus.com/smartsuite](http://www.lotus.com/smartsuite)

**call 1300 880 150 for more information or to buy today**



## Find what you need to succeed

**Lotus Discovery  
Server**

**WNT W2000  
W98 WMe W95**



- **Built-in collaboration tools for instant messaging and project management**
- **Automated services for analysing and categorising information and expertise to reveal the relationships in an easy-to-use interface that can be searched or browsed**
- **Aggregates structured and unstructured information from multiple systems and sources**
- **Collaborative e-business solution that bridges people and knowledge.**

The Lotus Discovery Server is the most comprehensive knowledge server for today's e-business users. Search for answers with the easy-to-use K-map user interface, or check in-depth expertise profiles to see who knows what. Built-in collaboration features allow users to initiate instant messages directly from the K-map.

For more information [www.lotus.com/discovery](http://www.lotus.com/discovery)

## Document management

**Lotus Domino.Doc**

**WNT W2000 AIX SUN**

- **Improve organisational efficiency by managing knowledge and intellectual assets**
- **Manage the lifecycle of a document – from authoring through review, approval, distribution and archiving**
- **Integrate with Lotus Workflow and Sametime to provide document management in a collaborative environment.**

Lotus Domino.Doc provides a secure, scalable document management system that enables organisations to leverage knowledge across an enterprise. Its open architecture allows customers to customise Domino.Doc to meet their needs.

For more information [www.lotus.com/dominodoc](http://www.lotus.com/dominodoc)

## Enterprise workflow automation

**Lotus Workflow**

**WNT W2000 LNX AIX SUN**

- **Develop, manage, and monitor business processes**
- **Reduce costs by improving processes and response times**
- **Integrate with Domino.Doc to automate document routing and updating, and with Sametime for instant collaboration.**

Lotus Workflow provides a platform for automating, refining and managing complex business processes. Using Lotus Workflow, you can create applications that perform processes more quickly with fewer bottlenecks. Lotus Workflow application leverage the domino integrates easily with Domino Workflow applications can easily be written for Domino environments. New Java application interfaces provide integration with WebSphere.

For more information [www.lotus.com/workflow](http://www.lotus.com/workflow)