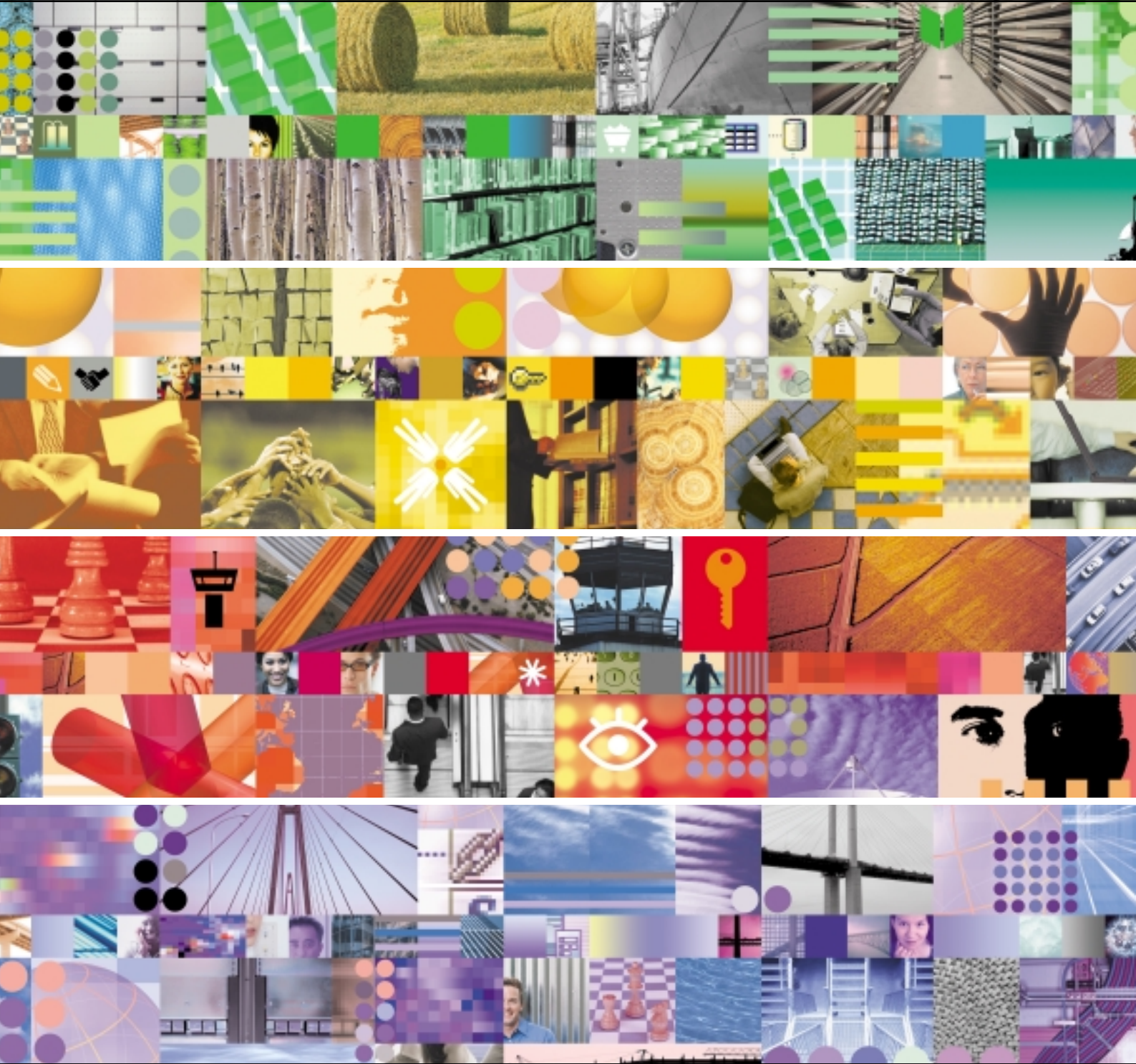


# Software



**CATALOGUE**  
Australia 2002

*Your complete line of solutions for Windows, Windows NT, UNIX, Linux and OS/2*



Other IBM Software and Solutions

Download other sections of the  
IBM Software Catalogue from  
[ibm.com/software/au/catalogue](http://ibm.com/software/au/catalogue)

visit [ibm.com/software/au/catalogue](http://ibm.com/software/au/catalogue) today



# Contents

## 6 Other IBM Software and Solutions

## IBM Global Financing

IBM Global Financing offers a wide range of flexible financing options that can help you acquire IBM and associated Business Partner software, hardware and services. Software financing is one of the fastest growing segments of the IT financing market for the following reasons:

### 1. Match cost to benefits

The costs associated with software acquisitions are heaviest at the front end, while benefits do not fully accrue until the project is implemented. When the project is financed and structured according to your business requirements, costs and benefits can be aligned more closely.

### 2. Bring investments forward

Using your cash flow rather than your capital allows you to invest now for business advantage and conserve your capital for higher yielding core business investments.

### 3. Total Cost of Ownership

Organisations that engage a financing partner for the total solution are more likely to achieve faster return on investment and greater long-term economies.

As the world's largest information technology financier, IBM Global Financing offers customers in more than 40 countries leasing and financing solutions for hardware, software and services acquired from IBM and other vendors. Talk to us today to see how we can help you reap the above rewards.

**Call 132 426 and ask for IBM Global Financing**

**Visit [ibm.com/financing/au](http://ibm.com/financing/au)**

Finance IT with IBM Global Financing

### Cross-platform compatibility

Now, in just a single glance, you can discover which software runs on which platforms. Simply refer to the alphanumeric codes.

<b>AIX</b>	= AIX*
<b>DOS</b>	= DOS
<b>HP-UX</b>	= HP-UNIX**
<b>LNx</b>	= Linux**
<b>MAC</b>	= Macintosh**
<b>MAC X</b>	= Macintosh X**
<b>NET</b>	= NetWare**
<b>NUMA-Q</b>	= NUMA-Q*
<b>OS2</b>	= OS/2* OS/2 Warp* OS/2 Warp Server
<b>SCO</b>	= SCO
<b>SUN</b>	= Sun Solaris**
<b>WMe</b>	= Windows** Millennium Edition
<b>WNT</b>	= Windows NT**
<b>W2000</b>	= Windows 2000
<b>W31</b>	= Windows 3.1 and higher
<b>W3X</b>	= All Windows 3x software
<b>W95</b>	= Windows 95
<b>W98</b>	= Windows 98
<b>W9X</b>	= All Windows 9x software
<b>UNIX</b>	= UNIX**

Download other sections of the  
IBM Software Catalogue from  
[ibm.com/software/au/catalogue](http://ibm.com/software/au/catalogue)



## *Everything you need - fast!*

### **Free delivery**

You pay no delivery fees on most products in this catalogue for standard deliveries. It means more money back into your business.

### **Backed by IBM**

Every IBM product in this catalogue is backed by an IBM Limited Warranty. See the IBM Limited Warranty for full details and limitations. Non-IBM products are provided on an 'as is' basis, but may be covered by the appropriate manufacturer's warranty.

### **Charge it!**

You can easily charge your purchase to the personal or corporate card of your choice: American Express, MasterCard or Visa.

### **Questions? We're always ready to help.**

Our Software Sales Specialists are just a phone call away with the latest product information, pre-sales advice and order placement assistance. Just **call 1300 880 150** with any questions you may have about our products and services. We'll help you select and configure the right solutions for your needs!

### **Volume licencing**

IBM offers substantial discounts for volume licencing on selected products. IBM's volume licencing program includes 24x7 telephone support for those mission critical installations, and ongoing software updates for the duration of your maintenance contract. Call one of our skilled Software Volume Licencing Specialists on **1300 880 150**.

### **Electronic Software Download**

IBM offers immediate access to selected software via ESD - Electronic Software Download. Make your selection from our wide array of products and choose the ESD product option to obtain an immediate licence and download of software code.

## *It's easy to order with IBM*

### **Phone**

**Call 1300 880 150** (Monday-Friday 8am-8pm) and you'll be connected to **ibm.com** where you can choose to be connected to an IBM Software Specialist.

### **ShopIBM on the Web**

**ibm.com/shop/au**

ShopIBM is the fast, easy, secure way to order online from IBM. Find the product you're looking for and just add it to your cart. It's that easy! You can shop online 24 hours a day (your order will be processed Monday to Friday between the hours of 8am-8pm). We accept all major credit cards.

### **Local IBM Representative**

Your local IBM Sales team will continue to support you with any IBM product you select from this catalogue.

For the sales representative nearest you,

**call 1300 880 150.**

### **Your IBM Business Partner**

You may find it convenient to order your catalogue products through your IBM Business Partner. Their knowledge of your organisation and its current computing environment may help you quickly select and install the best IBM products for your needs.

### **Passport Advantage**

Passport Advantage is IBM's comprehensive software licensing and software maintenance program that saves organisations money at every stage of software acquisition and use, everywhere in the world. Passport Advantage is the most flexible and cost-effective way for organisations to reap the benefits of volume pricing for new software, new releases of the latest technology, and technical support to keep businesses up and running. It can help lower acquisition and administrative costs, facilitate migration to new platforms, boost productivity and increase profits.

For more information visit:

**ibm.com/software/passportadvantage**

**Or call 132 426 and ask for Passport Advantage.**

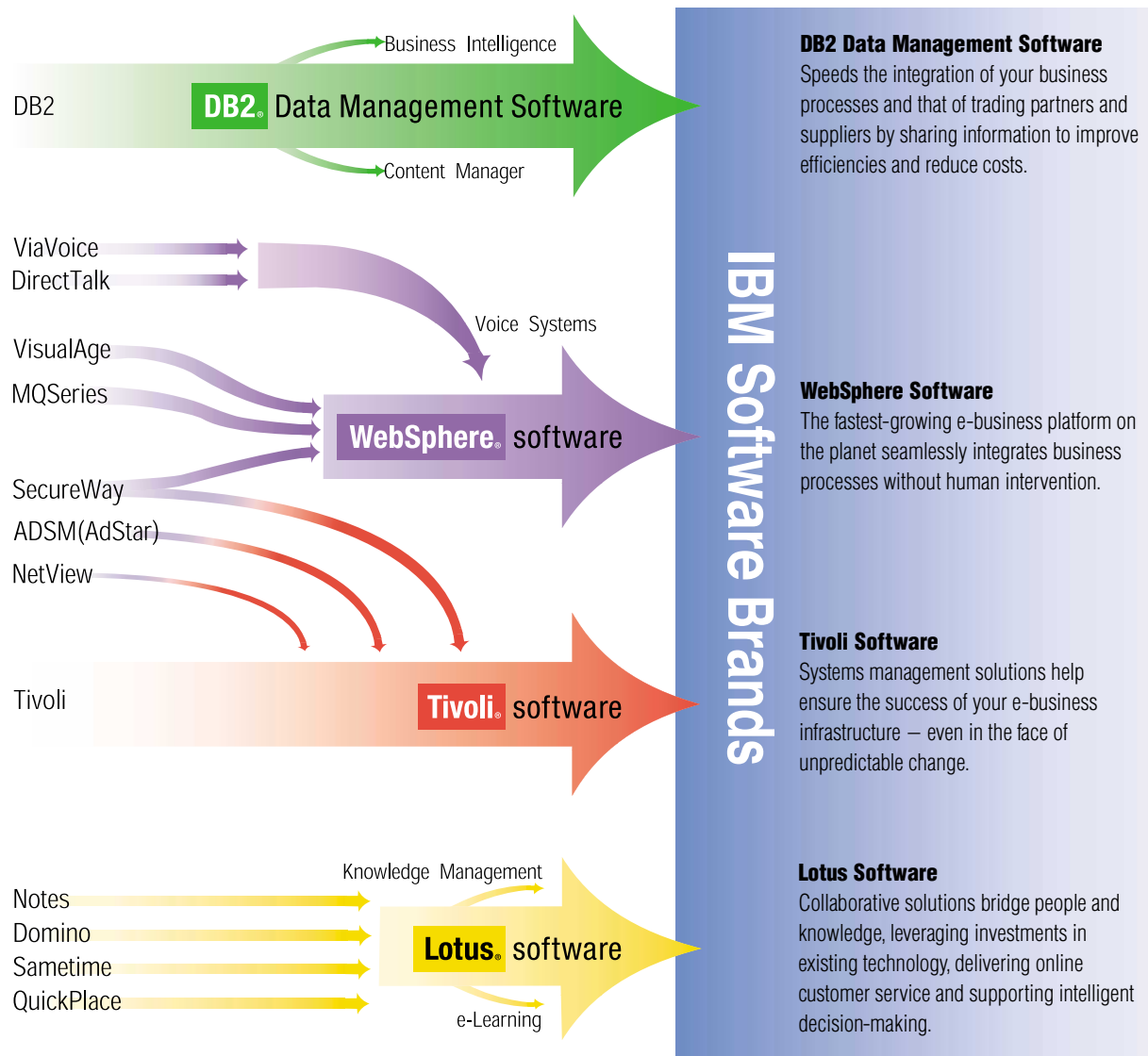
## Meet the demands of dynamic e-business with IBM software.

e-business made the move from simple Web publishing to B2C and B2B transaction processing. From integrating your systems and applications with the Web to extending them across your value chain. Where do we go from here?

Dynamic e-business. As the next step in the evolution of e-business, dynamic e-business is about flexibility. Heightened connectivity. Adapting to changes in the marketplace quickly. Efficiently. Without a huge investment of money, time or resources.

IBM is working with other industry-leading companies to establish the open standards required to create dynamic e-business. And implementing these standards in our software products so that we can provide you with the solutions you need to benefit from dynamic e-business integration.

With IBM software and dynamic e-business, you can quickly adapt your systems to keep pace with an ever-changing business environment. Create more flexible business models. Maximise the value of business processes. And drive your profitability.



call **1300 880 150** for more information or to buy **today**

# *A comprehensive guide to the IBM software your business needs to grow.*

To get greater efficiencies from your business, there's no need to scrap your current software systems, you can simply build on what you have. Especially when you're talking e-business; software is the foundation of an e-business infrastructure.

Your systems will help you gain a competitive advantage, containing customer and operational data that is priceless and growing exponentially. In a world of constant change, the ability to achieve competitive advantage, and keep it, is directly related to the flexibility of the underlying infrastructure.

IBM has completed thousands of customer engagements, working with companies such as ASX, St George Bank, Qantas and Telstra. More importantly, we've taken what we've learned in those engagements and used it to create a roadmap and a portfolio of middleware software, servers and services that can be combined to help your business.

This catalogue, developed especially for the Australian market, covers our entire spectrum of software including our four key software divisions: DB2, Lotus, Tivoli and WebSphere. If you want your business to grow, you'll find your software solution right here.

## **DB2 and Informix to manage and leverage data.**

The IBM Data Management Software and Informix portfolio provides an open, scalable, industry standard platform across NT, Windows, UNIX, Linux, OS/390 and more. Ranging from high performance, extendable database engines powering your business application, to Business Intelligence solutions leveraging your priceless data and information, and Content Management solutions for management, storage and integration of unstructured data-like documents, audio, video, images and much more.

IBM Data Management delivers unique deployment flexibility with unparalleled scalability and availability.

## **Lotus for leveraging know-how.**

By bridging the knowledge gaps in your business, you can establish the right teams, adapt to change and outpace the competition. Lotus software allows suppliers, partners, customers and employees share company information with three integrated solutions: Messaging and Collaboration, Knowledge Management and IBM MindSpan Solutions.

Lotus offers a leading portfolio of modular and standards-based software that easily integrates with other applications and operating platforms. Its distinctive solutions can help optimise your company's business transactions and the human interactions that support them.

## **Tivoli for managing complexity.**

Tivoli software from IBM enables an IT organisation to reduce the total cost of ownership and improve the service levels of their IT infrastructure. Tivoli software helps traditional enterprises and e-businesses worldwide manage security, storage, performance and availability, and configuration and operations.

Tivoli software is a global leader in systems management software, in fact, 96% of Fortune 500 companies use Tivoli products and services to efficiently manage their enterprises.

## **WebSphere for integrated infrastructure.**

IBM WebSphere is the broadest, best-integrated family of middleware in the industry. Combining application serving and integration technologies, complete customer relationship management, supply chain management, B2B and e-commerce services, WebSphere encompasses a full range of products designed to maximise your business performance.

WebSphere software gives you the tools to create a compelling Web experience for users plus enhance e-business performance. Organised into product groupings that match your specific needs, IBM WebSphere-based solutions provide your company with the flexibility to quickly transform into an adaptable, fast-growing and integrated business that can compete effectively on the Web.

## **All your software needs in the one place.**

You'll find all your IBM software solutions in this catalogue. For more information or to buy, simply call 1300 880 150 or visit [ibm.com/software/au/catalogue](http://ibm.com/software/au/catalogue)

visit [ibm.com/software/au/catalogue](http://ibm.com/software/au/catalogue) today

## Simplify your transition to e-business and Web-based solutions

OS/2 Warp Server for e-business

OS2



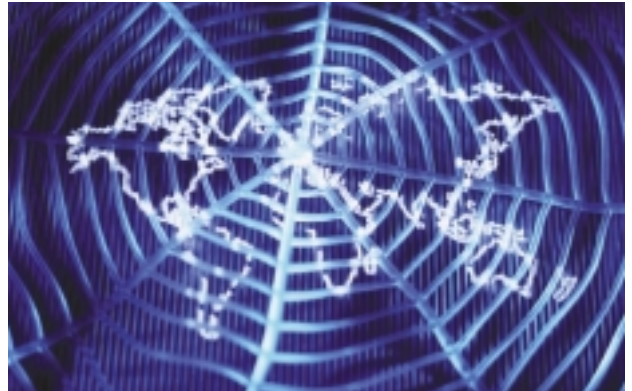
- **Builds on the proven strengths of OS/2 Warp Server V4**
- **Integrates Windows NT 4.0 servers seamlessly into the OS/2 network and provides full, managed access to Windows NT file, print and application servers**
- **Allows you to leverage your current assets while simplifying your transition to e-business and Web-based solutions**
- **Delivers exceptional scalability for demanding e-business requirements**
- **Leading-edge Web technologies to support e-business transformation**
- **Broad, Intel-based industry client support and the Intel-based platform for server-managed clients**
- **Network operating system suitable for all sizes of installations.**

For availability of new features and functions for OS/2 Warp Server for e-business, visit our Software Choice Web site at: [ibm.com/software/os/warp/swchoice](http://ibm.com/software/os/warp/swchoice)

For more information [www.ibm.com/software/os/warp/warp-server/](http://www.ibm.com/software/os/warp/warp-server/)

## The Internet of the future is here

Pervasive Computing



The desire to access information from anywhere at anytime through any device on any network is a reality; which provides businesses with new opportunities to deliver information to a variety of devices.

The global Internet economy that was built around desktop PCs is expanding to incorporate a galaxy of smaller, simpler devices – cell phones, palm devices; in-vehicle information systems and more. By incorporating these devices into your network your business can move into the world of pervasive computing and wireless e-business.

IBM has the following software offerings to support your implementation of pervasive computing. They include:

### **WebSphere Everyplace Server (Access, Enable, and Service Provider Offerings)**

- integrated packages based on WebSphere Everyplace Server that quickly extend data and application to wireless computing devices and networks

### **MQSeries Everyplace**

- supports the messaging needs of lightweight devices, such as palm devices and laptop computers

### **DB2 Everyplace**

- brings the power of DB2 to mobile devices

### **WebSphere Portal Solutions**

- provides an open framework for creating custom portal sites

### **IBM Everyplace Wireless Gateway**

- extends applications to mobile devices over many different wireless and wireline networks

### **IBM Mobile Connect**

- a server-based data synchronisation and management solution for enterprises with mobile computing needs

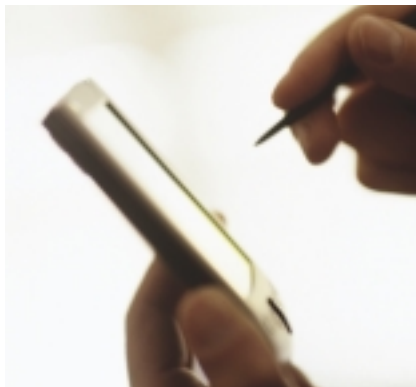
For more information [www.ibm.com/pvc](http://www.ibm.com/pvc)

**call 1300 880 150 for more information or to buy today**

## Manage data between enterprise servers and mobile devices

IBM Mobile Connect

WNT W2000



### IBM Mobile Connect provides functionality in specific areas:

- **Synchronisation of contacts, calendars, tasks, e-mail, and custom Data between mobile devices and Lotus Domino, Microsoft Exchange or ODBC-compliant database servers**
- **Implementation of software tools to aid management of devices used by mobile employees or customers**
- **Transfer of data between mobile devices and your network server using wired or wireless connections.**

IBM Mobile Connect is a server-based data synchronisation and management solution for enterprises. It allows you to manage and control information remotely, whether synchronising information between mobile devices and your network server or updating software applications running on handheld devices. By integrating mobile computing into your corporate infrastructure, your users can have access to the most current information, from virtually anywhere at any time, yet security and data protection is maintained.

For more information [www.ibm.com/pvc/products/mobile\\_connect](http://www.ibm.com/pvc/products/mobile_connect)

## Extend applications to wireless devices

IBM Everyplace Wireless  
Gateway for Multiplatforms

AIX SUN



The IBM Everyplace Wireless Gateway for Multiplatforms V2.1 is a distributed, highly scalable, multi-purpose UNIX communications platform. It supports security-rich data access by both Wireless Application Protocol (WAP) and non-WAP clients over a wide range of international wireless network technologies, local area networks (LANs) and wide area networks (WANs). The multipurpose design of Everyplace Wireless Gateway enables it to be configured to support a variety of communications modes, including: WAP Gateway with support for multiple bearer networks, short messaging service (SMS) and push proxy gateway (PPG), and remote access gateway providing TCP/IP connectivity.

### IBM Everyplace Wireless Gateway for Multiplatforms V2.1:

- Delivers e-business applications to mobile users over wireless and wired networks
- Provides cost-effective network access to mobile users
- Integrates diverse wireless networks using a single industry-standard interface
- Improves network response times and reduces data overload with data compression and header reduction
- Maintains or restores dial-up connections automatically to transmit data efficiently

### Everyplace Wireless Gateway components include:

**Everyplace Wireless Gatekeeper**—provides a Java technology-based administrator console to the Everyplace Wireless Gateway and to wireless resources.

**Everyplace Wireless Client**—software runs locally on mobile devices and provides a full function interface to communicate with Everyplace Wireless Gateway.

For more information [www.ibm.com/pvc/products/wireless\\_gateway](http://www.ibm.com/pvc/products/wireless_gateway)

## *Make the transition to e-business simple*

**IBM Small Business Suite****LNx**

- **Domino Application Server for messaging and collaboration capabilities**
- **DB2 Universal Database allows users to access and manage any amount of data, including text, image, audio and video**
- **WebSphere Application Server is a function-rich IBM HTTP server (powered by Apache Web server) that supports JavaServer Pages (JSP), servlet applications, and JavaBeans technology**
- **IBM Suites Installer, a Java-based tool, makes it easy to manage installation, configuration and deployment of components and non-IBM applications to one or more server and client computers in a business' network.**

The Small Business Suite provides award-winning products you need to run a growing business. Designed for small and medium businesses with up to 100 users, the Small Business Suite is an ideal, integrated solution that covers all your critical business functions and processes, such as e-mail, building and maintaining a dynamic Web site, storing all types of business data, running business applications and other business processes performed daily to customers, suppliers and prospects. The Small Business Suite offers advanced communication services needed for fast, flexible access to the Internet.

For more information [www.ibm.com/software/linux/sbs](http://www.ibm.com/software/linux/sbs)

**call 1300 880 150 for more information or to buy today**





## *How do I start? IBM Start Now Solutions*

IBM Start Now Solutions have been especially designed for medium-size businesses that wish to implement business solutions quickly and effectively. They address the key opportunities and challenges of IT Directors, and integrate a combination of best of breed software products and services to allow immediate implementation and rapid financial returns.

- **Build a strong e-business infrastructure foundation**
- **Streamline your business**
- **Transform your IT into a cost-cutting centre for your company**

### **How much does it cost?**

Attractive entry prices are available for each offering, combining software and services for a typical entry-level installation.

**Call 1800 289 426** and ask for Start Now.

### **Start Now Business Integration - Cut your integration costs.**

Integration is the key IT challenge for companies of all sizes. "Many IT enterprise systems such as CRM, supply chain management, ERP are not connected" (IDC). Integration is also the first step toward leveraging the Web and implementing a portal strategy. Includes: WebSphere MQSeries, and Implementation services.

### **Start Now Leveraging the Web - Increase the ROI of your Web investment.**

e-business is more than having a static Web site that displays information about your company and products. Demand more from your Web site: enable dynamic content, add program logic to your Web site in a scalable and secure way, integrate with your back end applications, join your sales and inventory systems, and align your IT to your business. Includes: WebSphere Application Server Advanced Single Server Edition; WebSphere Studio Application Developer and Implementation Services.

### **Start Now e-commerce - Expand your business with a lower cost sales channel.**

Buy and sell over the Internet: Allow your customers to browse catalogues on your site, fill electronic shopping carts, make secure purchases in their own language and currency. Enable advanced relationship marketing and customer service, analysis on statistics generated by customers, support of B2B and B2C e-commerce, etc. includes: WebSphere Commerce Professional Entry Edition Integrated e-commerce Solution; WebSphere Commerce Studio Professional Developer Edition and Implementation services.

### **Start Now Content Management - Cut your paper handling costs, improve your customer service.**

What if you could instantly answer your customer questions by accessing their statements online?

This all-in-one solution enables you to store, index and archive your customer information, order details, payable records, inventory levels, legal files, microfiche, video and other data into a centralised electronic content repository, with easy user search and retrieval. Supports a wide range of media devices. Includes: IBM Content Manager Entry Bundle; Implementation services.

### **Start Now Business Intelligence - Know your customers, better manage your business.**

Businesses generate an ever-increasing amount of data such as customers, product sales, inventory and other data. However, this data is locked away in many applications and formats where it cannot be accessed for analysis. This integrated data warehouse offering enables you to extract, transform and query your business data in order to gain an unprecedented level of knowledge about your market and customers' behaviour. Includes: DB2 Warehouse Manager; DB2 Universal Database; Query tool: Brio or Business Object and Implementation services.

### **Start Now Team Collaboration - Cut your communication/travel costs.**

This offering brings the instant messaging capabilities to the enterprise by adding security (including Firewall support and encrypted chat), customer online discussions from your company Web site, Web-based teamrooms to share and organise projects, portal integration and a wealth of other features. Network Magazine declared Lotus Sametime "Product of the year" in 2001! Includes: Sametime; QuickPlace and Implementation services.

### **Start Now Storage Management - Cut your storage management costs.**

Data is your company's most precious asset. Protect your data with a comprehensive data backup & storage management solution that protects you from hardware failures and other incidents including site disasters. Includes comprehensive centralised management from the Web, capability to minimise the amount of transferred data, broad support of storage devices/operating systems/applications (database, email, ERP, application servers), automated archival of inactive data, and policy-based automation of all functions for a "set it and forget it" type of implementation. Includes: Tivoli Storage Manager and Implementation services.