

# Software

*Your complete line of solutions for Windows,  
Windows NT, UNIX, Linux and OS/2.*



**CATALOGUE**  
Australia 2002



SEE PAGE 30

## **DB2** Data Management Software

The DB2 and Informix portfolio delivers high performance, scalable, cross platform data management solutions powering Business Applications, Content Management and Business Intelligence. IBM Data Management provides unparalleled data integration capabilities that protect your investment and integrate enterprise information.

SEE PAGE 48

## **Lotus** software

Lotus provides collaborative e-business solutions that bridge people and knowledge and maximise investments in existing technology. Lotus can deliver a competitive advantage by securely bringing together people and information with its collaboration, learning and knowledge-enabling software.

SEE PAGE 44

## **Tivoli** software

Business impact management - take control of your company's infrastructure. Tivoli offers a full range of products, covering performance and availability, configuration and operations, security and storage.

SEE PAGE 6

## **WebSphere** software

The IBM WebSphere software platform for e-business is a family of products and offerings built on open standards. Together, they provide the middleware and development tools that e-business requires covering portals, business integration and web application server.

visit [ibm.com/software/au/catalogue](http://ibm.com/software/au/catalogue) today



Linux  
Page 54.

# Contents

6 WebSphere

30 DB2

44 Tivoli

48 Lotus

52 Other IBM  
Software  
and Solutions

## Cross-platform compatibility

Now, in just a single glance, you can discover which software runs on which platforms. Simply refer to the alphanumeric codes.

<b>AIX</b>	= AIX*
<b>DOS</b>	= DOS
<b>HP-UX</b>	= HP-UNIX**
<b>LNx</b>	= Linux**
<b>MAC</b>	= Macintosh**
<b>MAC X</b>	= Macintosh X**
<b>NET</b>	= NetWare**
<b>NUMA-Q</b>	= NUMA-Q*
<b>OS2</b>	= OS/2* OS/2 Warp* OS/2 Warp Server
<b>SCO</b>	= SCO
<b>SUN</b>	= Sun Solaris**
<b>WMe</b>	= Windows** Millennium Edition
<b>WNT</b>	= Windows NT**
<b>W2000</b>	= Windows 2000
<b>W31</b>	= Windows 3.1 and higher
<b>W3X</b>	= All Windows 3x software
<b>W95</b>	= Windows 95
<b>W98</b>	= Windows 98
<b>W9X</b>	= All Windows 9x software
<b>UNIX</b>	= UNIX**

## It's easy to order with IBM

### Phone

Call **1300 880 150** (Monday-Friday 8am-8pm) and you'll be connected to **ibm.com** where you can choose to be connected to an IBM Software Specialist.

### ShopIBM on the Web

**ibm.com/shop/au**

ShopIBM is the fast, easy, secure way to order online from IBM. Find the product you're looking for and just add it to your cart. It's that easy! You can shop online 24 hours a day (your order will be processed Monday to Friday between the hours of 8am-8pm). We accept all major credit cards.

### Local IBM Representative

Your local IBM Sales team will continue to support you with any IBM product you select from this catalogue.

For the sales representative nearest you,

call **1300 880 150**.

### Your IBM Business Partner

You may find it convenient to order your catalogue products through your IBM Business Partner.

Their knowledge of your organisation and its current computing environment may help you quickly select and install the best IBM products for your needs.

### Passport Advantage

Passport Advantage is IBM's comprehensive software licensing and software maintenance program that saves organisations money at every stage of software acquisition and use, everywhere in the world. Passport Advantage is the most flexible and cost-effective way for organisations to reap the benefits of volume pricing for new software, new releases of the latest technology, and technical support to keep businesses up and running. It can help lower acquisition and administrative costs, facilitate migration to new platforms, boost productivity and increase profits.

For more information visit:

**ibm.com/software/passportadvantage**

Or call **132 426** and ask for Passport Advantage.

call **1300 880 150** for more information or to buy **today**

## *IBM Global Financing*

IBM Global Financing offers a wide range of flexible financing options that can help you acquire IBM and associated Business Partner software, hardware and services. Software financing is one of the fastest growing segments of the IT financing market for the following reasons:

### **1. Match cost to benefits**

The costs associated with software acquisitions are heaviest at the front end, while benefits do not fully accrue until the project is implemented. When the project is financed and structured according to your business requirements, costs and benefits can be aligned more closely.

### **2. Bring investments forward**

Using your cash flow rather than your capital allows you to invest now for business advantage and conserve your capital for higher yielding core business investments.

### **3. Total Cost of Ownership**

Organisations that engage a financing partner for the total solution are more likely to achieve faster return on investment and greater long-term economies.

As the world's largest information technology financier, IBM Global Financing offers customers in more than 40 countries leasing and financing solutions for hardware, software and services acquired from IBM and other vendors. Talk to us today to see how we can help you reap the above rewards.

**Call 132 426 and ask for  
IBM Global Financing**

**Visit [ibm.com/financing/au](http://ibm.com/financing/au)**

Finance IT with IBM Global Financing

## *Everything you need - fast!*

### **Free delivery**

You pay no delivery fees on most products in this catalogue for standard deliveries. It means more money back into your business.

### **Backed by IBM**

Every IBM product in this catalogue is backed by an IBM Limited Warranty. See the IBM Limited Warranty for full details and limitations. Non-IBM products are provided on an 'as is' basis, but may be covered by the appropriate manufacturer's warranty.

### **Charge it!**

You can easily charge your purchase to the personal or corporate card of your choice: American Express, MasterCard or Visa.

### **Questions? We're always ready to help.**

Our Software Sales Specialists are just a phone call away with the latest product information, pre-sales advice and order placement assistance. Just **call 1300 880 150** with any questions you may have about our products and services. We'll help you select and configure the right solutions for your needs!

### **Volume licencing**

IBM offers substantial discounts for volume licencing on selected products. IBM's volume licencing program includes 24x7 telephone support for those mission critical installations, and ongoing software updates for the duration of your maintenance contract. Call one of our skilled Software Volume Licencing Specialists on **1300 880 150**.

### **Electronic Software Download**

IBM offers immediate access to selected software via ESD - Electronic Software Download. Make your selection from our wide array of products and choose the ESD product option to obtain an immediate licence and download of software code.

**visit [ibm.com/software/au/catalogue](http://ibm.com/software/au/catalogue) today**

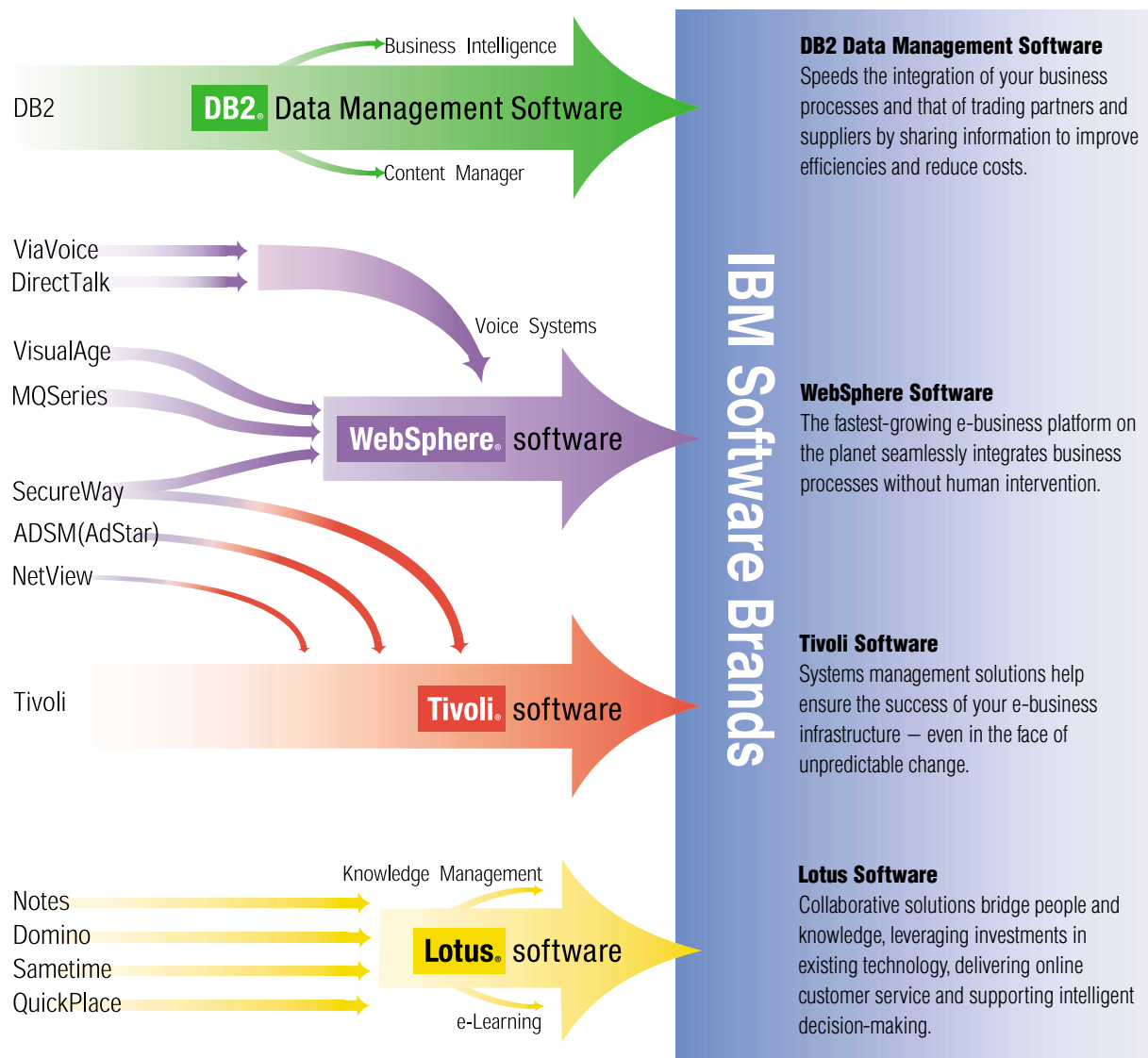
## Meet the demands of dynamic e-business with IBM software.

e-business made the move from simple Web publishing to B2C and B2B transaction processing. From integrating your systems and applications with the Web to extending them across your value chain. Where do we go from here?

Dynamic e-business. As the next step in the evolution of e-business, dynamic e-business is about flexibility. Heightened connectivity. Adapting to changes in the marketplace quickly. Efficiently. Without a huge investment of money, time or resources.

IBM is working with other industry-leading companies to establish the open standards required to create dynamic e-business. And implementing these standards in our software products so that we can provide you with the solutions you need to benefit from dynamic e-business integration.

With IBM software and dynamic e-business, you can quickly adapt your systems to keep pace with an ever-changing business environment. Create more flexible business models. Maximise the value of business processes. And drive your profitability.



call **1300 880 150** for more information or to buy **today**

# *A comprehensive guide to the IBM software your business needs to grow.*

To get greater efficiencies from your business, there's no need to scrap your current software systems, you can simply build on what you have. Especially when you're talking e-business; software is the foundation of an e-business infrastructure.

Your systems will help you gain a competitive advantage, containing customer and operational data that is priceless and growing exponentially. In a world of constant change, the ability to achieve competitive advantage, and keep it, is directly related to the flexibility of the underlying infrastructure.

IBM has completed thousands of customer engagements, working with companies such as ASX, St George Bank, Qantas and Telstra. More importantly, we've taken what we've learned in those engagements and used it to create a roadmap and a portfolio of middleware software, servers and services that can be combined to help your business.

This catalogue, developed especially for the Australian market, covers our entire spectrum of software including our four key software divisions: DB2, Lotus, Tivoli and WebSphere. If you want your business to grow, you'll find your software solution right here.

## **DB2 and Informix to manage and leverage data.**

The IBM Data Management Software and Informix portfolio provides an open, scalable, industry standard platform across NT, Windows, UNIX, Linux, OS/390 and more. Ranging from high performance, extendable database engines powering your business application, to Business Intelligence solutions leveraging your priceless data and information, and Content Management solutions for management, storage and integration of unstructured data-like documents, audio, video, images and much more.

IBM Data Management delivers unique deployment flexibility with unparalleled scalability and availability.

## **Lotus for leveraging know-how.**

By bridging the knowledge gaps in your business, you can establish the right teams, adapt to change and outpace the competition. Lotus software allows suppliers, partners, customers and employees share company information with three integrated solutions: Messaging and Collaboration, Knowledge Management and IBM MindSpan Solutions.

Lotus offers a leading portfolio of modular and standards-based software that easily integrates with other applications and operating platforms. Its distinctive solutions can help optimise your company's business transactions and the human interactions that support them.

## **Tivoli for managing complexity.**

Tivoli software from IBM enables an IT organisation to reduce the total cost of ownership and improve the service levels of their IT infrastructure. Tivoli software helps traditional enterprises and e-businesses worldwide manage security, storage, performance and availability, and configuration and operations.

Tivoli software is a global leader in systems management software, in fact, 96% of Fortune 500 companies use Tivoli products and services to efficiently manage their enterprises.

## **WebSphere for integrated infrastructure.**

IBM WebSphere is the broadest, best-integrated family of middleware in the industry. Combining application serving and integration technologies, complete customer relationship management, supply chain management, B2B and e-commerce services, WebSphere encompasses a full range of products designed to maximise your business performance.

WebSphere software gives you the tools to create a compelling Web experience for users plus enhance e-business performance. Organised into product groupings that match your specific needs, IBM WebSphere-based solutions provide your company with the flexibility to quickly transform into an adaptable, fast-growing and integrated business that can compete effectively on the Web.

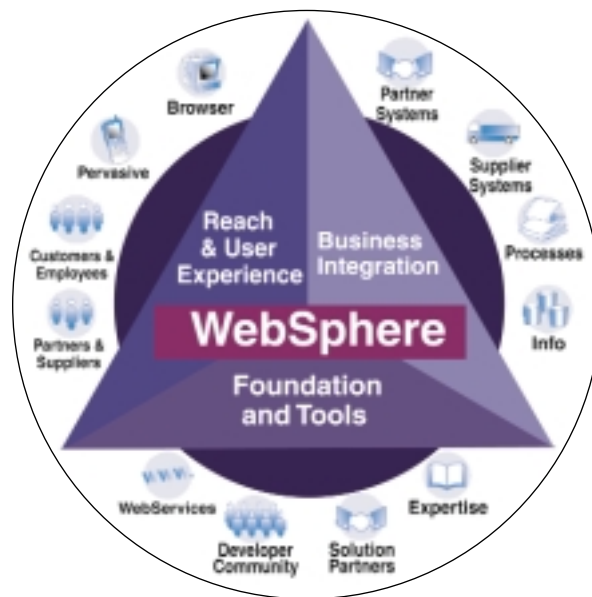
## **All your software needs in the one place.**

You'll find all your IBM software solutions in this catalogue. For more information or to buy, simply call 1300 880 150 or visit [ibm.com/software/au/catalogue](http://ibm.com/software/au/catalogue)

visit [ibm.com/software/au/catalogue](http://ibm.com/software/au/catalogue) today

## Infrastructure software for dynamic e-business

### WebSphere Software Platform Overview



**The IBM WebSphere software platform for e-business is a family of products and offerings built on open standards. Together, they provide the middleware and development tools that e-business requires.**

WebSphere software fundamentally focus on:

- Building, connecting, and managing applications
- Providing access to information across a spectrum of users, devices and customisation options
- Integrating and automating business processes.

These three areas of functionality yield three broad classes of software:

**Foundation and Tools** for building run-and-deploy applications.

WebSphere Application Servers and WebSphere MQ messaging form a solid foundation for the platform. The base of the WebSphere 'pyramid' also consists of: application development tools like the WebSphere Studio and VisualAge families that are state-of-the-art, integrated and scalable, along with content management tools to keep your Web-based information up-to-the-minute. The foundation and tools assure scalability, speed and performance for any level of e-business demand, enable you to shorten costly development cycles, reuse your existing systems, build and use Web services and capitalise on your developers' skills.

**Reach and User Experience** for enhancing customer loyalty by personalising Web-based content and making it accessible to any device.

With WebSphere, you can build portals that enable users, partners and employees to readily find what they need in a highly interactive and personal way. You can provide wireless access to your systems to reach new markets with WebSphere's pervasive, voice and translation offerings. You can conduct e-commerce to reach a global market quickly and cost effectively. And you have performance and personalisation abilities to ensure that users don't have to wait or search for relevant information. Products in this dimension include WebSphere Portal family, Transcoding Publisher, Translation Server, Edge Server and the WebSphere Commerce family.

**Business Integration** for integrating business processes internally and with business partners.

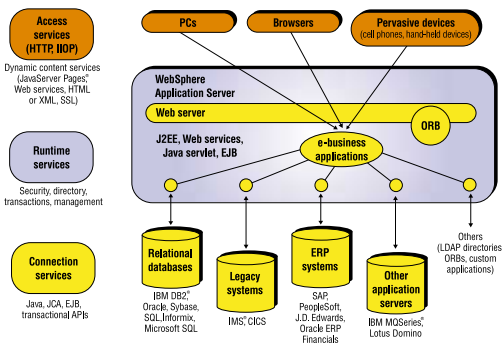
WebSphere offerings such as WebSphere Business Integrator make it easy for companies to implement applications and business processes, including supply chain management and integration of existing processes with the Web. You can run the business the way you want: innovating brand new processes dynamically, connecting at will to your suppliers and customers as individuals. With WebSphere's Business Integration offerings, you can slash cycle time and costs for a rapid ROI.

For more information [ibm.com/websphere](http://ibm.com/websphere)

# Powerful foundation for flexible deployment of e-business applications

WebSphere Application Server, Advanced Edition

WNT W2000 LNX AIX HP-UX SUN



- **Integrated key Web services open standards support**
- **Full J2EE certification and rich enterprise Java open-standards implementation**
- **Unparalleled connectivity via J2EE Connector Architecture implementation**
- **Extensive performance, scaling, security and control for advanced e-business applications.**

## WebSphere Application Server Version 4.0

(WebSphere AS V4), Advanced Edition is a comprehensive, Java technology-based Web application server aimed at professional Java technology developers who require J2EE and Web services functionality for dynamic e-business applications. It is available in three specialised configurations which offer businesses the flexibility to respond to the changing marketplace without migrating to a different technology base.

### Advanced Edition

This full configuration provides strong integration to databases, message-oriented middleware and legacy systems and applications, along with clustering support. It appeals to businesses that need to build highly transactional, manageable, available and scalable applications that offer distributed security and remote administration.

### Advanced Single Server Edition

This configuration provides the same core J2EE and Web services programming model as the full configuration with simplified administration. It appeals to departments, medium businesses and pilot applications which require a lower cost, fast to get running option that does not require the failure bypass, workload distribution or remote administration associated with multi-server management.

### Advanced Developer Edition

This configuration is functionally equivalent to the Advanced Single Server Edition configuration with licensing and pricing terms to meet the needs of individual developers who are looking for a friendly and powerful unit testing environment, especially one that is seamlessly integrated with IBM's tooling. WebSphere AS V4, Advanced Developer Edition's license agreement excludes production usage. This configuration can be used for internal evaluation and for the development, demonstration and testing of applications only. Applications developed with this configuration can be deployed with the Advanced Single Server Edition.

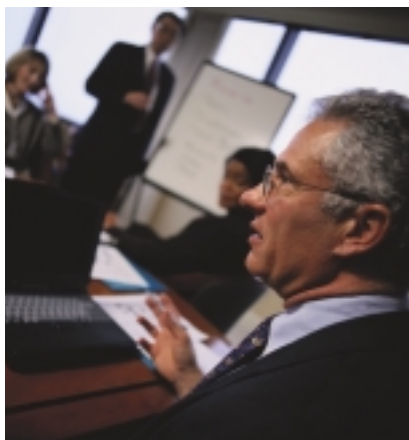
	Advanced Single Server Edition Advanced Developer Edition	Advanced Edition (the full configuration)
Full J2EE 1.2 compliance with some J2EE 1.3 support	X	X
Web services support		
Connection management and pooling	X	X
XML parsing	X	X
Expanded database support	X	X
Apache-based Web server	X	X
Browser-based administration of XML files	X	X
Firewall support	X	X
Java technology (such as EJB, MJS, servlet)	X	X
Lotus Domino interoperability	X	X
WebSphere tools integration	X	X
Integration with WebSphere offerings	X	X
Integration with Enterprise Services		X
Directory services		X
Application-level workload management		X
Clustering and cloning for higher scale and fault tolerance		X
Additional caching for improved transaction Performance		X
Distributed security		X
Full support for remote administration		X

For more information  
[ibm.com/software/info1/websphere/index.jsp?tab=products/appserv](http://ibm.com/software/info1/websphere/index.jsp?tab=products/appserv)

## Extend WebSphere Application Server with Enterprise Services

WebSphere Application Server, Enterprise Edition

WNT W2000 LNX  
AIX HP-UX SUN



**WebSphere Application Server V4.1 Enterprise Edition (WebSphere AS V4.1 EE) builds on the capabilities of WebSphere AS V4.0 Advanced Edition (AE) to meet the sophisticated needs of enterprise-class customers. Its principal elements are:**

**WebSphere AS V4.0 AE:** offers integrated support for Web services open standards, full J2EE 1.2.1 compatibility and powerful interoperability between Web services and J2EE technology.

**WebSphere Enterprise Services:** plugs into WebSphere AS V4.0 AE to extend its capabilities with:

- Business rule beans
- Message beans and Java Message Services (JMS) listener
- Internationalisation service
- Shared work areas
- Bidirectional CORBA connectivity
- C++ CORBA software development kit
- ActiveX bridge

**TXSeries:** supports and simplifies transactional connections across diverse and complex networks.

**MQSeries:** supports the JMS listener Enterprise Service, enables communications between WebSphere AS V4.1 EE applications and integrates with other MQSeries-based applications.

WebSphere AS V4.1 EE Development Runtime is available for purchase separately.

For more information  
[ibm.com/software/info1/websphere/index.jsp?tab=products/appserv\\_enterprise](http://ibm.com/software/info1/websphere/index.jsp?tab=products/appserv_enterprise)

## Raises the bar for enterprise Web metrics

WebSphere Site Analyser

WNT W2000  
LNX AIX SUN

**WebSphere Site Analyser V4.0 is a comprehensive Web site visitor analysis solution that includes:**

- **Distributed cross-platform and scalable solutions for detailed content and usage analysis of Web site activities**
- **Web-based user interface and JSP/EJBs architecture**
- **Rich set of data capture and reporting capabilities for most leading Web servers and WAS applications**
- **DB2 for scalable analysis out of the box**
- **Oracle support**
- **Published database schema, useful for advanced data mining and OLAP reporting systems**
- **Near real-time and log-based data collection and reporting.**

WebSphere Site Analyser V4.0 is a comprehensive Web analysis solution offering robust, accurate, and detailed analysis of your enterprise Web site activities. It helps your organisation make facts-based decisions on all Web initiatives from content design to marketing advertisement effectiveness.

WebSphere Site Analyser V4.0 helps ensure successful e-Business operations by providing a detailed view of what is occurring on your Web site(s). It captures, stores, measures, reports and charts Web site visitor metrics, trends, preferences and traffic; site content and structure; site usage analysis; proxy server analysis; personalisation metrics and e-commerce analysis. This provides accurate and detailed analysis of your Web initiatives and campaigns.

WebSphere Site Analyser is an IBM e-Business WebSphere Foundation Extension. WebSphere Site Analyser V4.0 offers unmatched platform and language support, is Java certified, and J2EE compliant. It comes with its own DB2 UDB database for a fast, easy, scalable installation, and now also includes Oracle support.

For more information [ibm.com/software/webservers/siteanalyzer/](http://ibm.com/software/webservers/siteanalyzer/)

**call 1300 880 150 for more information or to buy today**



## Build personalised sites easily

WebSphere Personalisation  
for Multiplatforms

WNT W2000 SUN  
LNX AIX HP-UX

- Provides an easy-to-use interface for defining how a Web site is personalised
- Defines campaigns of targeted Web page content and personalised e-mail
- Delivers targeted content based on visitor's actions on the Web site
- Works with WebSphere Site Analyser V4 to report on business rule effectiveness
- Integrates with content management systems
- Supports business rules and collaborative filtering personalisation.

WebSphere Personalisation simplifies the development of personalised sites by adding the following capabilities to WebSphere Application Server:

- Personalisation workspace – allows non-technical users, such as business managers, to define a site's personalisation strategy through an easy-to-use browser-based interface
- Campaign management – allows business managers to define a set of actions made up of Web page content and targeted e-mail to accomplish a business objective
- Implicit profiling – develops profiles of site visitors based on the content they view and their actions on the site
- Reporting on campaign and business rule effectiveness via WebSphere Site Analyser
- Simplified integration with LDAP, IBM Enterprise Information Portal and Interwoven TeamSite
- Rules engine – executes business rules which determine what content is displayed to each site visitor
- Recommendation engine – collaborative filtering product for making content and product recommendations. Up to 25,000 profiles are licensed to be stored. Capacity can be expanded in increments of 250,000 profiles with WebSphere Collaborative Profiles
- Resource engine – a set of Java APIs which simplifies integration with multiple sources of profiles and content.

For more information [ibm.com/software/webservers/personalization/](http://ibm.com/software/webservers/personalization/)

## Enabling 'Application Aware' networks

WebSphere Edge Server  
for Multiplatforms

WNT LNX AIX SUN

**WebSphere Edge Server Version 2.0 for Multiplatforms (Edge Server) distributes application processing to the edge of the network under centralised administrative and application control.**

It opens significant new opportunities for e-business, service providers, and independent software vendors with unparalleled application scalability and user response times. With its tight integration in the WebSphere software family, Edge Server is a world-class vehicle for deploying selected components into the network. Significant new functions and benefits of Version 2 include:

- **Application Offload** shifts the burden of serving composed, personalised, dynamic content from the application server to Edge Servers placed at network edges by offloading back-end servers and peering links.
- **Content Distribution** deploys published Web content to caches and re-hosting servers throughout the network.
- **Enhanced Caching** improves response time by offloading back-end servers and peering links as a forward, reverse or transparent proxy.
- **Enhanced Load Balancing** via new features such as Network Address, Translation (NAT), Kernel-level Content-Based Routing (CBR) support and the WebSphere Edge Server Consultant for Cisco CSS switches.
- **Security** is centralised using Tivoli SecureWay Policy Director Plug-in's authorisation engine to ensure only authorised users can access cached and non-cached Web resources.
- **Transactional Quality of Service** allocates computing and network resources according to a transaction's business value. It allows customers to prioritise and secure traffic based on user classes and groups; optimising resource utilisation and improving network scalability.

For a complete edge of network solution, WebSphere Edge Server Version 2.0 also includes:

**WebSphere Application Server**, Advanced Edition Single Server Version 4.0 (restricted usage license).

**Tivoli Policy Director V3.8** with 100 user licenses.

For more information [ibm.com/software/webservers/edgeserver/](http://ibm.com/software/webservers/edgeserver/)

## Deliver a personalised and collaborative B2C / B2B / B2E portal experience

WebSphere Portal Family

WNT W2000 AIX LNX SUN



The **IBM WebSphere Portal family** of products delivers a unified IBM portal strategy, bringing together the software components you need to help you securely deliver tailored content and collaborative portal experience to employees, (B2E) suppliers (B2B) and customers (B2C). Portal technology. Content personalisation capabilities. Collaboration capabilities. Web site analysis. Content management capabilities. All designed to help you maximise your Web site effectiveness and your return on investment.

Whether you want to implement a simple portal, enhance its capabilities in stages, or immediately exploit the full breadth of IBM portal capabilities, the three simple packaged options of WebSphere Portal are designed to meet and grow with your unique portal needs.

### **WebSphere Portal Enable offering: get a portal up and running – quickly and easily**

A flexible, scalable horizontal portal framework providing you with the foundation for implementing highly personalised portals.

- Integrate enterprise applications, syndicated content, Web sites, e-mail, and more through a wide variety of Portlets
- Dynamically personalise portal content using business rules and collaborative filtering
- Leverage a common set of services for connectivity, integration, administration, and presentation that is required across portal environments
- Customise and extend the portal framework with the portlet API to meet unique portal requirements.

### **WebSphere Portal Extend offering: extend access to action**

Includes all the Enable capabilities and adds integrated collaboration, extended search and Web site analysis.

- Provide work environments equipped with collaboration tools such as discussion areas, document libraries, group calendars, task and milestone tracking, online people awareness and instant messaging
- Allow searches across multiple repositories including relational databases, Lotus Notes and Domino databases, popular Web search engines, and text or HTML documents
- Capture, store, measure, report and chart Web site visitor trends and preferences on all Web initiatives.

### **WebSphere Portal Experience offering: a comprehensive portal offering**

Includes all the Extend capabilities and adds advanced collaboration, enterprise content management and enhanced security features.

- Effective online collaboration through e-meetings, application sharing and whiteboarding as well as the ability to take rooms offline
- Data storage for a broad spectrum of digital information including facsimiles, images, PC files, XML, and multimedia
- Content infrastructure for applications including call centres, high-volume claims processing and accounts payable
- Folder management and document workflow
- Sample Java applications and advanced development tools
- Security policy management tools for e-business and distributed applications.

For more information  
[ibm.com/software/info1/websphere/solutions/offerings/portalfamily.jsp](http://ibm.com/software/info1/websphere/solutions/offerings/portalfamily.jsp)

## *Integrated, open, role-based tools to boost developer productivity*

WebSphere Studio Product Family

WNT WXP W2000 WMe W98 W95 LNX



**WebSphere Studio product family brings together unparalleled integration across development tools and can bridge the gap between distributed teams. This comprehensive integrated set of tools for developing dynamic e-business applications can provide everything a developer needs from simple Web design to the most advanced Java development functions. Whatever your development skill-set or need is, the IBM WebSphere Studio product family can provide you with the tools you need to help build your applications better and faster than before.**

**WebSphere Studio Homepage Builder** is the entry-level Web authoring and design tool. It contains everything you need to design, build and publish professional-quality, lively Web pages. You don't need HTML knowledge or programming skills. As a beginner or an expert you can incorporate the latest Web technology into your Web pages easily and intuitively.

Its key features include:

- Over 2,000 built-in templates
- Over 5,000 images, animations, sounds and Java applets in a built-in library
- Interactive audio tutorial
- Support for latest Web technology with intuitive user interface
- Advanced scripting support to create client-side dynamic applications with Visual Basic or JavaScript
- WebArt Designer - to create your own graphic titles, logos, buttons, and photo frames with professional looking touches
- AnimatedGif Designer - to create life-like animation from still pictures and graphics as well as animated banners
- Integrated easy-to-use visual layout tool
- WebVideo Studio to easily add AVI and MPEG video clips from digital camera to your site
- Support for pervasive computing devices
- Accessibility check for visual/hearing impaired persons.

**WebSphere Studio Professional Edition** is for professional Web developers in small teams getting started with dynamic WebSphere-based applications. It takes the rich page editing functions in WebSphere Studio Homepage Builder and adds:

- Support for JavaServer Page 1.1 and Servlet 2.2
- A team environment to check in/check out files
- Advanced wizards to create database applications
- Rich deployment to WebSphere Application Server V4.0, Advanced Single Server Ed., including J2EE support
- Integration with VisualAge for Java V4.0
- Web services creation and consumption wizards

**WebSphere Studio Site Developer Advanced**, the follow-on technology for WebSphere Studio Advanced, is a comprehensive Web development tool that brings together all aspects of Web application into a common interface. It allows you to create and deploy Web content, provides for more efficient site design and management, and makes Web application design, construction and deployment easy.

Its features include:

- Integrated version control system including adaptors for Rational Clearcase LT OEM and Concurrent Versions System (CVS)
- Visual layout of dynamic pages, an advanced-function HTML and JSP editor
- Built-in WebSphere and Apache Tomcat test environments with JSP Debugger
- Rich media tools for visual applet creation, gif animation and image creation
- XML and Web services development environments
- Database support including a SQL wizard, SQL query builder and a Relational Schema Centre
- An integrated Java development environment.

**WebSphere Studio Application Developer** is the next generation product for VisualAge for Java based on the WebSphere Studio Workbench, an open-tool platform and integration technology. Building on the many popular functions of VisualAge for Java and WebSphere Studio, WebSphere Studio Application Developer delivers an advanced and robust J2EE development environment that provides excellent support for building, testing, and deploying both server-side (Servlets, JavaBean, EJBs) and client-side (HTML, JSPs) components. WebSphere Studio Application Developer is for professional Java developers who require integrated Web, JSP, XML and Web services support.

Other key features include:

- Help create, build, test, publish and discover Web services based applications, supporting UDDI, SOAP and XML
- Generate XML documents from DTDs, schemas
- Integrate with best-of-breed plug-ins
- Enable collaborative development with role-based perspectives
- Optimise application performance
- Enable end-to-end local and remote testing
- Increase productivity and create high-quality applications using wizards, code generators and best practices.

**WebSphere Studio Application Developer, Integration Edition** provides powerful graphical tools for the creation and customisation of application adapters, reducing the risk, complexity and cost involved, and eliminating the need for extensive coding. It includes all of the capabilities of WebSphere Studio Application Developer as well as support for the Enterprise services offered by WebSphere Application Server Enterprise Edition. Its key features include:

- Support for JDK 1.3, configurable runtime, incremental compilation, scrapbook, dynamic debugging and Java text editor
- Wizards and visual tools for creating adapters, Web services, JavaBeans, EJBs, and JavaServer Pages
- A sophisticated Adapter Builder to integrate Enterprise resources with J2EE applications based on the J2EE Connector Architecture (JCA) open standard
- A range of adapters for popular packaged applications.

For more information [ibm.com/software/ad/adstudio](http://ibm.com/software/ad/adstudio)

## Component-based development

WebSphere Business  
Components

WNT W2000 LNX  
AIX SUN



- **Based on open standards technology**
- **Delivers a proven framework, as well as prebuilt and tested components, tools and services**
- **Enables true "plug and play" componentry**
- **Supports integration with IBM Web Services offerings**
- **Leverages skills and standards, improved time to market and broad market acceptance.**

WebSphere Business Components (WSBC) eases solution deployment by providing the tools, components and deployment support you need to develop Enterprise JavaBeans (EJB) applications and component-based solutions. WSBC family delivers the following:

**WSBC Studio** – provides a starter set of components, tools and supporting services needed to create and deploy additional components and build industry applications

**Text Analyser BC** – enables rapid runtime categorisation textual input

**Order Capture BC** – captures information on sales orders, pricing, handles credit checks and determines product availability

**WSBC Composer** – a development workbench for composing prebuilt, ready-to-use components (including transaction and infrastructure Java based) to build enterprise e-business applications.

For more information [ibm.com/software/webservers/components](http://ibm.com/software/webservers/components)

## Traditional and Web Services application and development tools

VisualAge Enterprise Suite

WNT W2000



**This suite of application development tools allows you to quickly move to e-business and simplify your application development software purchasing and administration. It can:**

- **Optimise I/T expenditures by helping eliminate shelfware and multiple tools**
- **Help reduce administration costs associated with tracking software use**
- **Gain productivity across the enterprise by taking advantage of the latest advances in application development tools**
- **Increase developer flexibility with a suite of tools that allows developers to use the right tool for traditional or e-business based projects**
- **Increase reusability and control of software with standardised development methodologies and tools.**

IBM VisualAge Enterprise Suite is a bundle of Windows and Windows NT development products that offers an end-to-end set of tools available for one single price. Each licensed developer in your organisation is entitled to use any of the products in the suite.

- WebSphere Studio Application Developer Integration Edition for Windows V4.1
- VisualAge Generator Developer V4.5
- VisualAge COBOL for Windows NT V3
- VisualAge PL/I V2.1
- Versata Studio Client V5.5 (a product of Versata, Inc., an IBM Business Partner)

For more information [ibm.com/software/ad/vaes](http://ibm.com/software/ad/vaes)

## *A rich environment for object-oriented application development*

### VisualAge C++ Professional for AIX

**AIX**

- **Incredible flexibility with the choice of a traditional, makefile-based C++ compiler or the highly-productive IBM incremental C++ compiler – both support 32-bit and 64-bit optimisation**
- **Support for the latest ANSI 98 C++ standards in both compilers, including a complete ANSI Standard Template Library**
- **New Performance Analysis tool to help analyse, understand, and tune your C and C++ applications for improved performance.**

VisualAge C++ Professional for AIX, V5.0 offers the flexibility of a set of C++ compilers supported by a suite of tools designed to offer a rich environment for object-oriented application development. It also provides a rich set of Open Class Libraries and a set of visual tools including the Visual Builder and Data Access Builder.

For more information [www.ibm.com/software/ad/vacpp](http://www.ibm.com/software/ad/vacpp)

## *Build robust e-business systems*

### VisualAge Generator

**WNT W2000 AIX HP-UX SUN OS2**


- **Simplifies development of MQSeries business integration solutions**
- **Provides a rapid application development environment for developing scalable WebSphere based e-business applications.**

VisualAge Generator, which is fully integrated with VisualAge for Java, offers versatile solutions with scalable, multiplatform exploitation across networked systems. It is designed to simplify and shield the complexities of all supported topologies. Developers with minimal Java expertise can implement end-to-end Java e-business systems and Java developers without mainframe expertise can develop systems for traditional, transactional platforms.

For more information [ibm.com/software/ad/visgen](http://ibm.com/software/ad/visgen)

**call 1300 880 150 for more information or to buy today**

## Complete e-commerce solutions for your Web sites

WebSphere Commerce Professional and Business Editions

WNT W2000 AIX SUN



**WebSphere Commerce Version 5.4 is an industry leading sell-side e-commerce solution designed for both Business-to-Business (B2B) and Business-to-Consumer (B2C) environments. This flexible and adaptable application consists of a set of integrated software components that enables enterprises to build and manage personalised and individualised e-commerce sites and to create robust next generation e-commerce environments that extend beyond a storefront.**

WebSphere Commerce delivers award-winning customer value:

- Support to both B2C and B2B implementations
- Reliable, secure, scalable e-commerce platform ensuring flawless execution in even the most rigorous conditions
- Highly customisable and flexible development environment based on open architecture and industry standards
- Easy-to-use interfaces to create dynamic marketing campaigns, target market segments, and personalised product promotions
- Business intelligence to track and analyse customer behavior and purchase patterns
- Catalogue content management features to build, manage and deploy sophisticated online catalogues
- Sophisticated multicultural enablement and support to sell in the global market
- Built-in payments supporting Offline, SET, CyberCash, VisaNet, and BankServ ACH
- Live Help/Customer Care Collaboration utilising Lotus Sametime technology to provide real-time instant messaging, application sharing and browser re-direction

- Anytime, anywhere access with e-Commerce support
- Speed and depth of integration to internal and external systems as well as business processes
- Powerful capabilities to strengthen business relationships and manage business interactions
- Cost savings and rapid ROI.

WebSphere Commerce is a complete, out-of-the-box, integrated solution. The infrastructure is built on key IBM technology products that are already integrated and shipped in the package. These include WebSphere Application Server, IBM HTTP Server, and DB2 Universal Database, providing a reliable, secure, and scalable foundation.

Two editions of WebSphere Commerce V5.4 are available. The Professional Edition meets the needs of most B2C businesses while the Business Edition is the appropriate platform for most B2B and Business-to-Business-to-Consumer environments - selling to consumers via distributors or resellers.

### WebSphere Commerce Professional Edition

Professional Edition (WCPE) is a market leading commerce server with the breadth of capabilities to meet the needs of any retail online storefront initiative - from entry level and up to the very sophisticated sites with personalised marketing, up-selling, cross-selling, and digital media assets. Enhancements over previous versions of WebSphere Commerce Suite include:

- Availability-to-Promise inventory management - for backorder processing
- Returns and refunds - enables returns processing
- Catalogue management interface and editor tool
- Tools Framework - enables quick implementation of a full-featured user interface with a common look and feel
- WebSphere Commerce Recommendation Engine - recommends items or content to site visitors based on their explicit ratings and behavior such as clickstream data and products purchased
- Business intelligence - helps merchants evaluate the success of campaigns, initiatives, e-marketing spots, sales and orders
- Tax integration kit - provides an interface to integrate tax solutions of independent software vendors
- Store development and server administration tools
- Security enhancements
- WebSphere Payment Manager enhancements - performance improvements, support for purchasing card and BankServACH cassette.

**WebSphere Commerce Business Edition**

Business Edition (WCBE) offers additional advantages for businesses that require easy to implement online commerce and collaboration with their traditional and new customers and partners, through online trading relationship management and standards based integration. Business Edition also provides functionality that is specific to Business-to-Business commerce. Its key features include:

- Live Help/Customer Care Collaboration - utilises Lotus Sametime technology to provide real-time instant messaging, application sharing and browser re-direction
- Financial - provides billing, invoicing and credit management
- Granular access control - allows setting up of a hierarchy of secure access to features and functions
- Buy-side purchasing function - includes purchase order support
- Business relationship management - provides intuitive browser-based business user interfaces to easily configure and modify business policies and contracts
- Customer entitlement and contract-based commerce: enables transactions to be based on business policies, contracts and requisition lists
- Request for Quotation (RFQ): allows buyers to customise RFQ – modify, duplicate, cancel, close or submit
- Messaging: provides the capability to connect to external procurement systems and marketplaces
- Online buyer/seller collaboration: provides a contract draft and proposal discussion template based on Lotus QuickPlace
- Advanced user and organisational management: provides support for hierarchical organisation structures and users by explicit assignment or implicit predefined grouping criteria.

**WebSphere Commerce Professional Entry Edition**

WebSphere Commerce Professional Entry Edition is a license-restricted version of WCPE providing an entry-level commerce solution for small and medium sized businesses. It is the same product as WCPE except for:

- Maximum of one processor, one store, and one server for production
- Sametime not included
- Support for Windows NT or Windows 2000, DB2 Universal Database Enterprise Edition, and IBM HTTP Server only.

**WebSphere Commerce Studio Developer Editions**

Get a quick start on developing your WebSphere Commerce Web site by using WebSphere Commerce Studio (WCStudio), Professional or Business Developer Edition, V5.4. These powerful design and development systems, based on WebSphere Studio include:

- WCPE in WCStudio, Professional Developer Edition, V5.4
- WCBE in WCStudio, Business Developer Edition, V5.4
- Tools and support for rules-based personalisation
- Tools for setting up auctions
- Product Advisor tools
- Tool for building and extending Enterprise JavaBeans (EJBs).

For more information [ibm.com/software/webservers/commerce/](http://ibm.com/software/webservers/commerce/)



## Improve e-commerce effectiveness

WebSphere Commerce  
Analyser Advanced Edition

WNT W2000 AIX



- **Designed for and significantly extends the analytical capabilities of WebSphere Commerce Suite (WCS) Pro V5.1**
- **Includes DB2 Universal Database Enterprise Ed., DB2 Warehouse Manager, Intelligent Miner for Data, HTTP Server and DB2 OLAP Starter Kit**
- **Provides automated implementation - start working right from the box**
- **Allows easy-to-use data mining and custom report building**
- **Supports end-user Web analytic reporting via Brio.Inform or BusinessObjects Commerce Tracker.**

WebSphere Commerce Analyser Advanced Ed. (WCA/Adv) V1.1 is an analytical solution that enables WCS Pro V5.1 users to analyse information related to their customer's e-commerce activities. By integrating data mining, WCA/Adv combines complex data characterisations, relationships, and projections with visualisation tools that can be used to create additional insights.

For more information [ibm.com/software/data/bi/wca](http://ibm.com/software/data/bi/wca)

## Optimise the wireless Web experience

WebSphere Transcoding  
Publisher

WNT W2000  
LNX AIX SUN



- **Dynamically extends Web content to various mobile devices including voice-only phone**
- **Supports Machine Language translation**
- **Streamlines content delivery**
- **Customises presentation for end-users.**

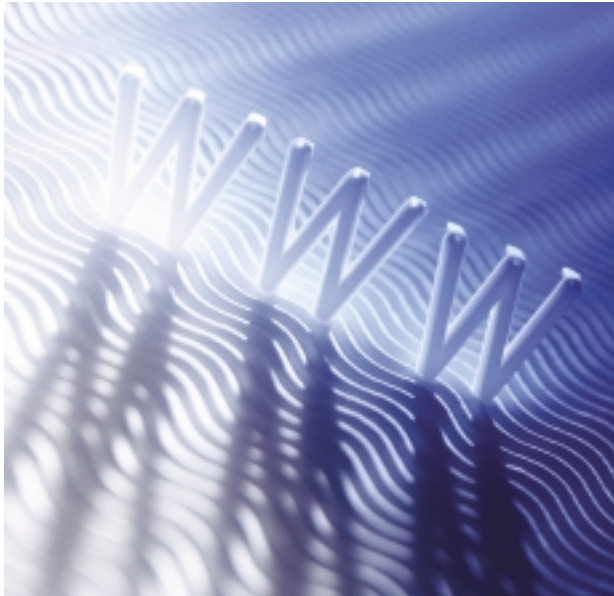
WebSphere Transcoding Publisher (WTP) is a server-side software that dynamically adapts, reformats, and filters data so that it is optimally formatted for pervasive computing. It minimises the need to generate and maintain multiple versions of Web content or applications to support different target devices and environments. WTP delivers a set of convenient plug-and-play content transformations along with the ability to deliver new transformations in response to new breeds of devices, emerging XML variants, and e-business trends. The flexible architecture keeps your business ahead of trends and helps ensure your data and applications continue to reach customers in the environments of the future.

For more information [ibm.com/software/webservers/transcoding/](http://ibm.com/software/webservers/transcoding/)

## Quickly extend legacy applications to the Web

WebSphere Host Publisher

WNT W2000 AIX SUN



Designed for ease-of-use, WebSphere Host Publisher enables IT professionals familiar with existing applications to simply extend them to the Web. Create new composite applications that mine information from various sources without modifying your back-end systems. It also provides the high level of security you need for your Web-based environment. Host Publisher offers the scalability, flexibility and robustness of an industrial-grade Web platform coupled with tools that enable the reuse of previous work in the creation of new, sophisticated, host-linked e-business applications.

For more information [ibm.com/software/webservers/hostpublisher/](http://ibm.com/software/webservers/hostpublisher/)

- **Extends the reach of your mission-critical legacy applications without modification, to Web users and new WebSphere applications**
- **Supports applications written for 3270, 5250, Virtual Terminal, Java and JDBC-enabled Databases**
- **Extends legacy services as new web services**
- **J2EE compliant**
- **Delivers Enterprise JavaBean (EJB) support**
- **Provides a WebSphere Portal portlet extending legacy content as new enterprise portal content**

call **1300 880 150** for more information or to buy **today**

## A single solution for all your host access needs

IBM Host Access Client Package

WNT W2000 W98 W95 LNX AIX HP-UX SUN OS2 NET



- **One tool with all you need for host access – IBM Personal Communications, IBM WebSphere Host On-Demand and IBM Screen Customiser**
- **Access to applications and data residing on AS/400 (5250), S/390 (3270), and DEC/UNIX (VT\*) hosts for traditional and Web users in SNA and intranet environments**
- **Thin client technology to distribute host access capability to remote users, as well as users in intranet and extranet environments**
- **The ability to create new graphical user interfaces (GUIs) to front-end host information with drag and drop technology – no programming is needed**
- **The IBM Host Access Client Package for iSeries Version 2.0 is the solution for all of your iSeries host connection needs. For those customers who need to access multiple backend host systems, the IBM Host Access Client Package for Multiplatforms Version 2.0 is a more appropriate solution.**

### Migrate to the Web at your own pace

The three components of IBM Host Access Client Package allow you to manage your migration to Web technologies at your own pace. With one package, you can support your diverse user community and eliminate your need to work with multiple vendors.

### IBM Personal Communications

IBM Personal Communications V5.5 for Windows is a market leader for traditional client access and connectivity. It is Windows 2000 Certified and includes support for Macro Conversion for use in Host On-Demand, Express Logon Function, Smart Card Support, and Associated 3270 Printer Support. With a full compliment of programming interfaces and the most options for connectivity, Personal Communications is the ideal tool for all environments.

### WebSphere Host On-Demand

WebSphere Host On-Demand V6.0 gives you secure access to your host applications and data whenever and wherever you need it, using a simple Java-enabled Web browser. Just click on the hyperlink to launch the Host On-Demand Java applet that gives you secure, scalable and reliable access with S/390, AS/400 and DEC/UNIX emulation in a single package. Database On-Demand, a Java SQL query function is also provided. Users may access any number of host sessions and still use their browser for other tasks. Host On-Demand requires no client installation since it can be centrally deployed and administered.

### IBM Screen Customiser

The drag-and-drop technology of IBM Screen Customiser V2.0.60 eliminates the need for programming. It is a cost-effective, quick solution that allows you to leverage investments in legacy applications. It automatically converts host screens into graphical presentations that are easily customisable without programming. It is based on innovative screen recognition technology, requiring no access to source code.

With the tools you can use today, you can start to build your e-business applications of the future.

For more information [ibm.com/software/network/hostaccess](http://ibm.com/software/network/hostaccess)

visit [ibm.com/software/au/catalogue](http://ibm.com/software/au/catalogue) today

## Open the door to protocol independent networking

IBM Communications Servers

WNT W2000 AIX OS2



The IBM Communications Server family offers a broad range of communications, connectivity and networking options that let you make application decisions based on business needs, not networking protocols. It brings you true networking – interconnecting people and applications – even when platforms and networking configurations are diverse. Several versions are available to support all of the most popular operating environments:

**IBM Communications Server for Windows NT and Windows 2000 V6.1.1** offers proven, secure, enterprise-class support for e-business networks on a Windows platform. It connects users to enterprise host applications and data over diverse networks – whether SNA, TCP/IP, intranets, extranets or the Internet. It includes:

- Express Logon Function
- Extended TN3270E Capabilities
- Microsoft Windows 2000 Active Directory\*\* Support
- SSL support, SLP service location and load balancing functions for TN Server

Communications Server for AIX, V6.1 has been enhanced to include support for the IBM AIX 5L Version 5.1 operating system, including support for the state-of-the art 32-bit and 64-bit Power kernels. The AIX 5L is the IBM strategic UNIX operating system for mission-critical, core business Applications.

**Communications Server for AIX** provides all-in-one communications services between workstations and host systems, as well as other workstations. Its capabilities include:

- A full-function SNA gateway
- The most Advanced Peer-to-Peer Networking system in the industry
- Support for many types of connections
- A rich set of application programming interfaces (APIs)
- Support for IBM's AIX 64-bit operating system

Communications Server for AIX opens the door wide to protocol- independent networking, with seamless support for workstations communicating across SNA and TCP/IP networks.

For more information [ibm.com/software/network/commserver](http://ibm.com/software/network/commserver)

## Jumpstart your e-business

**WebSphere Host  
Integration Solution**

**WNT W2000  
AIX SUN**



WebSphere Host Integration Solution includes the latest levels of:

- **WebSphere Host On-Demand**
- **IBM Screen Customiser**
- **WebSphere Host Publisher**
- **WebSphere Application Server, Advanced Edition**
- **WebSphere Studio, Professional Edition**
- **IBM Personal Communications<sup>†</sup>**
- **IBM Communications Servers.**

Version 2.5 extends the WebSphere Application Server, Advanced Edition to both Registered and Concurrent Users providing customers with additional flexibility.

WebSphere Host Integration Solution provides the ability to support and effectively use intranets, extranets, and the Internet. In one total software offering it enables virtually every user to have access to your mission-critical business systems regardless of their platform or network environment.

This Web-to-host offering addresses the full e-business cycle, with industry-leading host access solutions and unmatched flexibility for any environment. Integrated into the WebSphere software platform is a comprehensive set of integrated e-business solutions that provides a total solution available at one simple price per user.

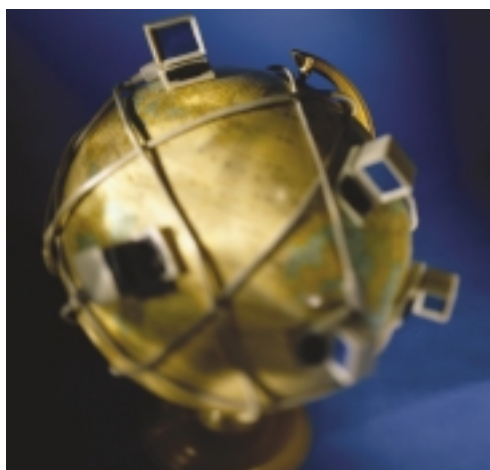
<sup>†</sup> Registered - Intranet User Only

For more information [ibm.com/software/webservers/hostintegration/](http://ibm.com/software/webservers/hostintegration/)

## Web access to your CICS applications

**CICS Transaction  
Gateway**

**WNT W2000 W98 W95  
AIX HP-UX SUN OS2**



**IBM CICS Transaction Gateway is IBM's strategic connector for connection to CICS, supporting J2EE for connectivity between the IBM WebSphere software platform for e-business and IBM CICS applications. It:**

- **Offers a comprehensive security-rich environment for optimal authentication and authorisation**
- **Allows you to choose application server programming models for deployment across most major execution platforms**
- **Delivers best-of-breed performance and scalability by using memory-based access to optimise connection to CICS applications**
- **Provides implementation of the J2EE Connector Architecture**
- **Is a well-proven, high-performing and robust connector.**

Today, conducting business intelligently means extending core business processes and applications to the Web to be able to offer the right products to your customers at the right time. You need to build easy-to-use, convenient applications to target self-service Internet consumers. And you must create applications that work for less technically knowledgeable users. You don't want to start from the ground up. You already have business-critical processes in place representing a substantial financial and technological investment. The challenge is to make existing business systems accessible in new ways.

IBM CICS\* Transaction Gateway, Version 4 offers a superb solution. It allows you to integrate your Web application server with your back-end business application systems running on CICS servers. It provides simple, efficient and scalable connectivity for most applications running on CICS servers.

For more information [ibm.com/software/ts/cics/](http://ibm.com/software/ts/cics/)

## Enterprise application integration

WebSphere MQ

WNT WinXP W2000 LNX AIX HP-UX SUN



- **Award-winning software for integrating applications**
- **Companies can more rapidly and inexpensively deliver an integrated suite of applications**
- **Provides facilities to exchange information across the majority of commercially available systems**
- **Delivers a consistent, familiar interface across all operating systems; minimises need for retraining, and increases return on investment**
- **Ensures once daily delivery of important messages**

WebSphere MQ (formerly MQSeries), the core of the MQ family, provides application connectivity. It can be used alone or with other members of the family such as WebSphere MQ Integrator (for enterprise application integration), and MQSeries Workflow and IBM Crossworlds (for business process automation), to deliver an end-to-end business integration solution.

A major new release of WebSphere MQ, Version 5.3, delivers enhancements that simplify programming, harmonise features across platforms, and improve security and performance. They include:

- Comprehensive security options are provided by Secure Sockets Layer (SSL) support, the Internet standard for secure communications
- Extended Java Message Service (JMS) support
- Product flexibility is increased by the API crossing exit
- Performance and scalability are enhanced, both for the MQI (Message Queuing Interface) and for JMS (Java Message Service) with publish/subscribe users
- Support for Windows XP and Linux on zSeries
- Enhanced functions allow easier system management of MQ clusters
- Other added features harmonise the zSeries and distributed platform products

For more information [ibm.com/software/ts/mqseries](http://ibm.com/software/ts/mqseries)

**call 1300 880 150 for more information or to buy today**

## Reliable messaging for mobile users

### WebSphere MQ Everyplace

WNT W2000 W98 WMe W95 LNX AIX HP-UX SUN



**WebSphere MQ Everyplace (formerly MQSeries Everyplace) brings reliable assured communications into an unpredictable world by giving you the capability to:**

- **Extend an MQ network to new platforms and devices**
- **Exploit the WebSphere MQ Integrator by routing transactions from stores and checkouts into the Integrator**
- **Get the benefits of assured once-only delivery, with superb security, over fragile and unmanaged communication networks**
- **Integrate a mobile workforce into key business processes by exploiting the latest devices and protocols**

- **Provide Internet users with safe access to the corporate messaging network**
- **Use WebSphere MQ Everyplace to provide 'earliest possible' delivery of key business data**
- **Reduce running costs by holding messages for batch delivery and using compression features to reduce transmission costs**

WebSphere MQ Everyplace, V2.0 extends the WebSphere MQ family, the infrastructure for connecting servers and mainframes in e-business solutions, to mobile platforms and devices, and retail systems. WebSphere MQ Everyplace complements the WebSphere MQ base product by providing robust messaging capability on small and mobile devices, as well as providing a direct link to WebSphere MQ Integrator - and enables e-Business messaging for the WebSphere Everyplace product set.

This release provides native support for C implementation on Windows PocketPC to extend the programming choice in the handheld market. It also supports point-to-point messaging via the Java Message Service (JMS), and extends Java programming to smaller devices that can run Java Micro Edition (J2ME).

For more information [ibm.com/software/ts/mqseries/everypace](http://ibm.com/software/ts/mqseries/everypace)

## Adapters to end platform incompatibility and simplify application integration

### MQSeries Adapter Offering

WNT W2000 AIX HP-UX SUN

- **Based on XML Open Applications Group (OAG) standards**
- **Builds interfaces for applications with provision of the MQSeries Adapter Builder**
- **Provides runtime services for all adapters built using the Builder**
- **Reduces the risk and cost of managing point-to-point application integration**
- **Provides a safe, predictable migration path: from simple point-to-point integration, without the need for a transformation engine to complex integration with message brokers and workflow.**

The MQSeries Adapter Offering provides a framework and tools to build and run adapters that connect existing and new, prepackaged or custom-developed applications to each other via MQSeries messaging into the wider MQSeries messaging environment. With this product you can bring applications onstream faster and reduce the cost of application development and maintenance.

MQSeries Adapter Offering has two elements. MQSeries Adapter Builder offers a visual environment to generate C or Java adapters. MQSeries Adapter Kernel for Multiplatforms deploys and executes the adapters, and performs related functions such as message construction, tracing and interfacing with MQSeries and JMS.

For more information [ibm.com/websphere/adapters](http://ibm.com/websphere/adapters)

## Manage information flow achieving business and application integration

### WebSphere MQ Integrator

WNT W2000 AIX HP-UX SUN

**WebSphere MQ Integrator, previously known as the IBM MQSeries Integrator, is a powerful information broker that uses enterprise-defined rules and intelligent routing to select and distribute information to the applications, databases and people who need it, across and between enterprises. The latest release, V2.1 offers:**

- Tagged Message Support
- Support for industry standard messages (SWIFT, EDI)
- XML enhancements ("MRM2")
- Java environment for plug-in nodes
- Plug-in API extensions (input nodes)
- Visual Administration and Debugging tools
- National Language and additional platform support

WebSphere MQ Integrator's flexible, extensible, open and scalable architecture enables you to:

- Integrate applications – existing or new
- Transform, augment, apply rules to and route message based data between high performance systems
- Integrate business and application data using dynamic content and topic-based publish/subscribe
- Deploy, configure and manage application integration flows requiring multiple run-times
- Deliver loosely or tightly coupled solutions
- Add a multiplicity of custom extensions
- Simplify application integration at design, development, and maintenance stages, saving both time and effort.

For more information [ibm.com/software/ts/mqseries/integrator](http://ibm.com/software/ts/mqseries/integrator)

## Achieve business integration

### MQSeries Workflow

WNT W2000 AIX HP-UX SUN

**IBM MQSeries Workflow enables a business to:**

- **Increase its agility and so act - and react - in a timely way**
- **Deliver new services and products that leverage new and existing investments in infrastructure**
- **Make its processes visible by revealing what is actually happening**
- **Ensure processes are visible and usable by employees, customers, partners and suppliers.**

IBM MQSeries Workflow is the core of IBM's Business Process Management software. It defines and executes start-to-end business processes, lifting your organisation to new levels of business agility while leveraging existing IT and organisational infrastructures. MQSeries Workflow delivers the highly scalable, reliable and transactional environment demanded by mission-critical e-business solutions. MQSeries Workflow provides the competitive edge by aligning your process with your business objectives.

For more information [ibm.com/software/mqseries/workflow](http://ibm.com/software/mqseries/workflow)



## Connect to popular packaged software

WebSphere Adapters

WNT W2000 LNX  
AIX SUN HP-UX



- **Integrates popular packaged software with new Web-based and existing WebSphere and MQSeries Applications**
- **Implements industry standards including J2EE Connector Architecture**
- **Provides integrated tooling to extend and customise adapters**
- **Reduces costs and time to market.**

WebSphere Adapters use open standards and integrated tooling to provide industry-leading support for Java technology-based application servers and message-based middleware. With J2EE Connector Architecture, WebSphere Adapters enable Java applications to reuse functions, data and business processes implemented in packaged application systems. When deployed in a server supporting the J2EE Connector Architecture, WebSphere Adapters allow you to use existing systems services, such as transaction management and security. Its standard J2EE connectors give you a single integration technology for both tightly and loosely coupled applications.

For more information [ibm.com/websphere/adapters](http://ibm.com/websphere/adapters)

## End-to-end e-business process management

WebSphere Business Integrator

WNT W2000



WebSphere Business Integrator V2.1 is a full function, end-to-end e-business process management system. It provides a framework for creating and executing IT solutions that integrate business processes spanning diverse applications and enterprises and manages those processes and the underlying IT components as a single, complete, flexible solution. This comprehensive solution to business integration challenges combines:

- IBM's middleware platforms including WebSphere Application Server and Studio, the MQSeries family of products, WebSphere Personalisation, and IBM Tivoli Security Solutions
- Simplified installation and configuration process for the component parts
- Powerful, defined solution model that avoids the need for each customer to discover and solve all the difficult integration problems
- WebSphere Studio Business Integrator Extension V2.1, an integrated tools suite for solution development and deployment using process templates

WebSphere Business Integrator is available in both Entry and Enterprise Editions.

For more information [ibm.com/software/webservers/tbtobintegrator/](http://ibm.com/software/webservers/tbtobintegrator/)

## Open the door to protocol independent networking

WebSphere Partner Agreement Manager

W2000 WNT AIX SUN



### WebSphere Partner Agreement Manager

Is designed for organisations whose primary focus is business-to-business integration with one or more partners. Multiple partners can participate in shared business processes and manage every aspect of standards-based business-to-business (B2B) process collaboration by providing:

- Extensive channel support
- A comprehensive B2B platform for a variety of partner integration solutions
- Process-oriented solutions that define how companies collaborate using a shared process
- Comprehensive built-in features for communications, security, configuration, and process traceability
- Easy integration with a range of partners, using a variety of data exchange methods
- Strong integration capabilities, leveraging MQSeries
- Business-critical framework for guaranteed message delivery, maximum reliability, and scalability
- Includes a restricted license copy of DB2 UDB and a channel toolkit

Three optional products are available:

### WebSphere Partner Agreement View

This offering enables third parties to use a Web browser to interact with WebSphere Partner Agreement Manager. It provides an interface between the WebSphere Partner Agreement Manager product and the Web applications developed by the licensee.

### WebSphere Partner Agreement Connect

This restricted-use version of WebSphere Partner Agreement Manager fully integrates with the main hub. It allows trading partners of the hub operator to participate in the defined public processes via a direct program-to-program connection. WebSphere Partner Agreement Connect makes it easy to communicate and manage the flow of information and business processes among partners, from simple data exchange to process execution. Users may not build their own public processes or operate their own trading hub.

### WebSphere Partner Agreement Channel Support

WebSphere Partner Agreement Manager supports an extensive range of industry-standard communications channels that facilitate the flow of information associated with business processes. Connectivity is provided using any of the following options:

- cXML (Ariba Commerce Services network)
- XML
- webPartner
- RosettaNet (includes Process Pak)

WebSphere Partner Agreement Manager can also be fully integrated with the WebSphere Business Integrator.

For more information [ibm.com/software/webservers/pam](http://ibm.com/software/webservers/pam)

*Unites and extends business processes*

IBM CrossWorlds

WNT W2000 AIX SUN



- **Change how businesses run at the process level within and among enterprises to improve efficiencies, reduce cost and increase revenue potential**
- **Provide an unmatched array of integration services within a scalable, patented architecture that supports re-use of components**
- **Enable rapid implementation of projects to integrate common business processes across multiple CRM, ERP, Supply Chain or legacy applications**
- **Achieve a consistent and unified view of information across the enterprise, across disparate systems and applications – to aid in reporting, planning and business analysis**
- **Model and implement improved process design – to aid in reducing labor costs, eliminate manual processes**
- **Analyse business activity to improve operational efficiency.**

The IBM CrossWorlds process integration solution is an element of the WebSphere brand that serves a wide spectrum of companies' integration needs – both inside and outside the firewall. As part of WebSphere, the IBM CrossWorlds solution extends e-business infrastructure by providing business process modules or collaborations, comprehensive tools, application connectors, and an industrial-strength process broker, all of which enable companies to extract the most business value from their investments.

**IBM CrossWorlds InterChange Server (ICS)**

An industry-leading business integration server which is open, high-performing and scalable providing a centralised and common view of enterprise-wide data.

**IBM CrossWorlds Toolset**

An easy-to-use graphical development environment and toolset for rapid end-to-end development, deployment and maintenance of business objects and process.

**IBM CrossWorlds Connectors**

An extensive list of connectivity options providing out-of-the-box access to many popular packaged and legacy applications, databases, trading partners' systems, and even public information stores on the Web.

**IBM CrossWorlds Collaborations**

A rich set of predefined business process logic for easily extending and uniting processes. With IBM CrossWorlds, you can reduce your costs of managing IT, increase productivity of your existing systems and processes, and improve your responsiveness to customer demands, partner opportunities and competitive pressures with the least disruption to ongoing business. From linking applications or systems to integrating and automating business processes, IBM CrossWorlds can help you with your present and future integration challenges. Combined with the information connectivity and integration capabilities of IBM's market-leading WebSphere MQ family, IBM provides one of the most comprehensive business integration solutions in the market.

For more information [ibm.com/websphere/crossworlds](http://ibm.com/websphere/crossworlds)

## Remove language barriers to global communications and e-commerce

**WebSphere Translation Server**

**WNT W2000  
AIX LNX SUN**

- **Translates hundreds of words per second**
- **Provides superior parsing mechanism and deep lexical analysis using state-of-the-art machine translation techniques**
- **Effects quick, inexpensive, convenient “gist” text translation**
- **Interprets specific terms or phrases for a domain or context**
- **Supports WebSphere Application Server and various HTTP servers**
- **Integrates easily into multiple environments with attached e-mail servers and synchronous collaboration chat servers.**

Leverage your existing Web infrastructure to present content to your customers and users in their native languages, at a fraction of the cost of professional translation.

With WebSphere Translation Server, you can provide Web pages, e-mail messages, and chat conversations in multiple languages, real time. You can also add your specific terms and phrases to the lexicons used by the machine translation engines. Disbursed processing and off-loading of the translation task from the HTTP, application or Sametime servers can be achieved with WebSphere Translation Server running on a dedicated server.

For more information [ibm.com/software/voice/enterprise/ep\\_8.html](http://ibm.com/software/voice/enterprise/ep_8.html)

## e-business finds its voice

**WebSphere Voice Server**

**W2000 AIX**



- **Voice-enable your applications to wireline and wireless devices using VoiceXML and Java standards**
- **Leverage your investment in Internet-skilled resources, telephony and Web infrastructure.**

WebSphere Voice Server provides speech recognition and speech synthesis (Text-To-Speech or TTS) engines, voice application development tools and telephony platform connections to develop and deploy applications for use over telephones. New features of V2.0 include:

- Concatenative TTS engine synthesising more natural sounding speech
- New support for Intel Dialogic telephony platform, in addition to existing support for Cisco and WebSphere Voice Response for AIX, with IBM DirectTalk Technology
- Enhanced language support, including US English, UK English, French, German, Italian, Spanish, Japanese, and Chinese (Simplified and Traditional)
- Complimentary copies of WebSphere Voice Toolkit, WebSphere Voice Server Software Developers Kit, WebSphere Application Server, Advanced Developer Ed.V4.0 and WebSphere Studio V4.0 Entry Ed.

For more information [ibm.com/software/voice/enterprise/ep\\_1.html](http://ibm.com/software/voice/enterprise/ep_1.html)

**call 1300 880 150 for more information or to buy today**

## Interactive voice response and advanced speech recognition

WebSphere Voice Response with DirectTalk Technology & IBM Message Centre

WNT W2000 AIX



### WebSphere Voice Response with Direct Talk Technology

WebSphere Voice Response is a versatile, powerful voice processing platform specialising in Interactive Voice Response (IVR) that takes information retrieval far beyond traditional "Press 1 to Continue" menus. By integrating WebSphere Voice Response with WebSphere Voice Server, applications can now combine keypad entry with voice recognition.

Key features of WebSphere Voice Response include:

- Answer and screen a large number of calls simultaneously and promptly, reducing caller wait time
- Scalable from 2 to 480 ports depending on platform
- Support speech recognition technology, including WebSphere Voice Server
- Provide dynamic, real-time information on demand through advanced Text-to-Speech technologies, including WebSphere Voice Server
- Support VoiceXML and Java for service creation
- Support multiple connectivity and signaling environments such as T1, E1, (ISDN, CAS, SS7) and VoIP.

### IBM Message Centre

IBM Message Centre is a unified messaging solution that manages employee and customer voice mail, e-mail and fax messages – for access anytime, anywhere, and from any device.

For more information [ibm.com/software/speech/enterprise/ep\\_2.html](http://ibm.com/software/speech/enterprise/ep_2.html)

## Bypass the keyboard...talk to your computer

IBM ViaVoice for Windows and ViaVoice for Macintosh

W2000 W98 WMe MAC X

- **Dictate and edit text, speak commands for your applications and the Web using your natural voice**
- **Headset microphone included**
- **Legal and medical vocabularies available.**

ViaVoice for Windows, Release 9 is a suite of continuous speech products designed to appeal to every level of user – from beginners to seasoned voice recognition 'power users'. Each of the four ViaVoice for Windows Release 9 editions – Pro USB, Advanced, Standard and Personal – offers innovative features designed to make setup, dictation and voice navigation easy and efficient:

- Key Control can ensure your voice commands are not mistaken for dictation
- Large Font Option can make creating your Personal Voice model more enjoyable
- Quick Response Dictation can allow ViaVoice to respond promptly as you create text with your voice

- Product Code Modifications Enhancements can ensure ViaVoice formatting and navigation commands work more quickly and efficiently
- Direct Dictation with formatting and editing into Microsoft Word products, including Word 2002.

ViaVoice for Mac OS X Ed. is a native MAC OS X application with the following key features:

- Rebuilt from the ground up for Mac OS X
- "Aqua" interface/look-and-feel
- Fast enrollment
- Dictation into many text-based Mac applications

For more information [ibm.com/software/voice](http://ibm.com/software/voice)

*A giant leap forward in database technology***DB2 Universal Database**

WNT W2000 W98 W95 LNX AIX HP-UX NUMA-Q SUN OS2

**DB2 Universal Database\* is the first multimedia, Web-ready relational database management system strong enough to meet the demands of large corporations and flexible enough to serve medium-sized and small businesses. DB2\* Version 7.2 has the following enhancements:**

- **MQ-Assist Wizard to help create a table function that reads from an MQSeries\* queue using the MQSeries user defined functions**
- **New Warehouse Connectors for sources such as i2, SAP R/3, web clickstream data, MQSeries message queues, and Microsoft\*\* OLEDB objects**
- **IBM ERwin MetaData Extract Program**
- **Wrappers to support distributed query access to new data sources, such as Sybase\*\* and Microsoft SQL Server, and to Oracle\*\* data from additional DB2 systems**
- **New DB2 Connect\* Web Starter Kit, a low cost Web connectivity package ideal for pilot projects**
- **DB2 Universal Developer's Edition now includes developer licenses for key data products**
- **DB2 Universal Database Text Information Extender for searching text documents with an SQL query.**

**With DB2 Universal Database Version 7.2, IBM continues its role as the database innovator in:**

**e-business**

DB2 Universal Database powers the most demanding e-business applications, such as electronic commerce, enterprise resource planning, customer relationship management, supply-chain management, Web self-service, and business intelligence. It adheres to all key Internet standards and includes WebSphere\*, XML extenders, and built-in Java\*\* support to make e-business application deployment fast and easy. DB2 is a scalable, industrial-strength database that can support millions of users and terabytes of data.

**Business Intelligence**

DB2 Universal Database means using data assets to make better business decisions. It provides data access, data analysis, and decision support to help control costs, uncover new opportunities, boost market share, and increase customer loyalty.

**Data Management**

DB2 Universal Database data management is more than simply running queries and applications. It offers superior data storage, quick and easy data access, thorough loss protection and complete administration support to optimise performance on your hardware and for your mix of applications.

**DB2 Family**

DB2 Universal Database continues to meet the demands of today's heterogeneous computing environments. It delivers open solutions that can access and integrate data from multiple, geographically separated sources on different platforms.

**There are many DB2 products to choose from:**

**DB2 Universal Database Personal Edition**

Provides a single-user relational database management system for your OS/2, Linux, or Windows desktop.

**DB2 Universal Database Workgroup Edition**

A multiuser DB2 database for applications and data shared in a workgroup or department setting on PC-based LANs.

**DB2 Universal Database Workgroup Unlimited Edition**

A version of Workgroup Edition for users of more than four Linux or Intel processors or more than two Unix processors.

**DB2 Universal Database Enterprise Edition**

A multiuser DB2 database for complex configurations and large database needs for Intel to UNIX platforms and uniprocessors to the largest SMPs.

# A giant leap forward in database technology

**DB2 Universal Database continued**

**WNT W2000 W98 W95 LNX AIX HP-UX NUMA-Q SUN OS2**

## DB2 Connect

There are three editions of DB2 Connect. More information on these products can be found on page 39.

## DB2 Universal Database Enterprise Extended Ed.

Provides a high-performance mechanism for complex data manipulation in large SMP and MPP-clustered server configurations on Windows NT, Sun's Solaris Operating Environment, AIX, Linux and HP-UX.

## DB2 Connect Personal Edition

Provides your OS/2, Linux or Windows desktop with transparent access, via direct connection, to data stored in DB2 on S/390\* or AS/400\* servers.

## DB2 Universal Developer's Edition

Provides all the tools required for one software developer to develop client/server applications to run on DB2 Universal Database. It also includes development licenses for DB2 Warehouse Manager, DB2 Data Links Manager, DB2 Net Search Extender, DB2 Relational Connect and DB2 Spatial Extender.

For more information [ibm.com/software/data/db2](http://ibm.com/software/data/db2)

### The following table summarizes the functional content of each product:

Component or Product	UDB PE	UDB WE	UDB EE	UDB EEE	CPE	CEE	PDE	UDE
Object-Relational Database Engine	Y-SU	Y-MU	Y-MU	Y-MU			Y-SU	Y-MU
Multimedia Support - DB2 Extenders	RT	RT	RT	RT	Y	Y		Y
Web-Enablement - Net.Data	Y	Y	Y	Y	Y			
Replication Support - DataPropagator Relational	Y	Y	Y	Y	Y	Y		
Extended GUI Administration Tools	Y	Y	Y	Y	Y	Y	Y	Y
Administration Client	Y	Y	Y	Y	Y			
Web-Enablement - WebSphere Application Server	Y	Y	Y	Y	Y			
Host Connectivity (DRDA*-AR) - DB2 Connect	Y	Y	Y-SU	Y	Y-SU	Y		
Application Development Clients							Y	Y

### KEY:

Y-Yes	SU-Single User	MU-Multiple User
PE - DB2 Personal Edition	PDE - DB2 Personal Developer's Edition	RT - Run-Time Licensing
WE - DB2 Workgroup Edition	UDE - DB2 Universal Developer's Edition	EEE - DB2 Enterprise - Extended Edition
EE - DB2 Enterprise Edition	CPE - DB2 Connect Personal Edition	CEE - DB2 Connect Enterprise Edition

## Bring the power of DB2 to mobile devices

**DB2 Everyplace**

**WNT W2000 LNX AIX SUN**



**DB2 Everyplace\* is a relational database and synchronisation server for mobile and embedded devices. It brings the power of DB2 to mobile devices and is the first enterprise mobile computing offering that provides development, deployment, and administration in one package. It includes:**

**DB2 Everyplace Database:** A relational database management system with a tiny footprint of less than 150Kb. It implements a subset of the SQL 99 standard, DB2 Call

Level Interface (CLI), Open Database Connectivity (ODBC), and Java Database Connectivity (JDBC). DB2 Everyplace also supports Type II Compact Flash storage devices such as the IBM Microdrive for higher capacity storage on mobile devices. The DB2 Everyplace database runs on Linux and embedded Linux, Palm\*\* OS, QNX Neutrino\*\*, Symbian EPOC\*\* and Windows CE.

**DB2 Everyplace Sync Server:** A bi-directional synchronisation service with conflict resolution. Sync Server was developed on industry standards that allow easy integration into your enterprise data architecture.

For more information [ibm.com/software/db2/everyplace](http://ibm.com/software/db2/everyplace)

## Extending the reach of your enterprise

**IBM Informix  
DataBlade Technology**

**WNT W2000 LNX AIX UNIX  
HP-UX NUMA-Q SUN**

- **Extends server functionality**
- **Fuels high-speed content management**
- **Empowers customisation**
- **Manages multi-media content with finesse**
- **Captures geospatial business intelligence.**

IBM Informix DataBlade Technology puts the power of the Internet directly into the IBM Informix Dynamic Server. IBM Informix DataBlade modules are server extensions that are integrated into the very core of the engine, delivering unparalleled application functionality and outstanding performance. With IBM Informix DataBlade modules, images, formatted documents, complex, time-series, video image and information html pages can all be stored, indexed and accessed directly in the relational database, providing greater security, performance, and ease of use.

**Informix Spatial DataBlade** enables you to intelligently manage complex geospatial information alongside traditional data without sacrificing the efficiency of the relational database model.

**Geodetic DataBlade** supports global space- and time-based queries without the limitations inherent in map projections, and provides high precision regardless of global location.

**TimeSeries DataBlade** provides sophisticated support for the management of time-series and temporal data.

Use a single DataBlade module, or integrate several simultaneously to create a unique information management solution customised for your needs. IBM Informix DataBlade technology today can help you make more efficient, smarter business decisions.

For more information [ibm.com/software/data/informix/blades](http://ibm.com/software/data/informix/blades)

**call 1300 880 150 for more information or to buy today**



## Unleash the power of your database

### IBM Informix Dynamic Server

WNT W2000 AIX UNIX HP-UX SCO SUN

- **Supports complex and rigorous, online transaction processing requirements**
- **Helps to optimises competitive business intelligence capabilities**
- **Helps to maximises data operations for workgroups and global enterprises**
- **Delivers high availability**
- **Offers high-performance technology**
- **Supports federated data access**
- **Provides application development and system management support.**

IBM Informix Dynamic Server 9.30 is a proven, best-of-breed database management solution. Its highlights include:

- Functionality upgrades to the IBM Informix System Administrator while maintaining ease of modification and Web-based thin client architecture
- Robust support for Spatial DataBlade 8.11
- High performance Enterprise Replication
- Improved support for DataBlade modules and development
- Java code native execution with IDS with J/Foundation
- An industry exclusive, automated “nearest neighbour” sorting of spatial data.

For more information [ibm.com/software/data/informix/ids](http://ibm.com/software/data/informix/ids)

## Scalable data warehousing for business-critical applications

### IBM Informix Extended Parallel Server

AIX UNIX HP-UX SUN



- **High-performance, flexible data warehousing enables integration of multiple traditional and Web-based business systems**
- **Scalability supports rapidly growing data volumes and users**
- **Comprehensive data management in complex, mission-critical environments promotes efficient decision making.**

IBM Informix Extended Parallel Server (XPS) is designed for the largest, most demanding, and complex data warehouse applications. By including comprehensive data warehousing features, and using a sophisticated, shared-nothing underlying architecture, XPS achieves industry-leading performance and flexibility. This allows you to make more profitable decisions from complex, query-intensive analytical applications. New to XPS 8.32 are:

- Improved administrative efficiency
- Significant usability and quality improvements making XPS more reliable and usable than ever
- Improved efficiency over older versions
- Added support for HP11.i and AIX 5.1 (32-bit).

For more information [ibm.com/software/data/informix/xps](http://ibm.com/software/data/informix/xps)

## Enhanced DB2 management products

DB2 Data Management Tools for Multiplatforms

WNT LNX AIX HP-UX SUN



**New and enhanced data management tools for your DB2 installations can help you effectively create and operate your application environment:**

- **DB2 Table Editor allows full screen table editing in multiple end-user environments**
- **DB2 Web Query Tool offers global data access via SQL and saves the results in multiple formats including XML.**

### **DB2 TABLE EDITOR VERSION 4.2 FOR MULTIPLATFORMS**

DB2 Table Editor is a rich toolbox providing a variety of ways to navigate, create, update or delete data. It gives you powerful table editing from within multiple end-user environments, including Java-enabled Web browsers and workstations, and Windows workstations. Working either with multi-row, row-at-a-time, or GUI forms with command buttons, data update and creation capabilities are easily rolled out to end-users with tight control over permissions and usage. Existing DB2 security at each database server is enforced, and further controls on user actions can easily be implemented with business rules and data validation built into table editing forms.

DB2 Table Editor for Multiplatforms Version 4.2 extends the capabilities of this powerful tool even further with:

#### **– Linked forms**

With DB2 Table Editor forms, developers building Windows or Java-based forms may now define linkages between forms. This allows for sets of forms to be built and linked with parent/child relationships, whether or not the data in the forms is related in the underlying DB2 table structure.

#### **– SQL command buttons**

The DB2 Table Editor form builder can now place a command button on any Windows- or Java-based form that will launch any SQL, including stored procedures.

#### **– Large Object support**

The Windows- and Java-based DB2 Table Editor interfaces now provide LOB support, and supports LOBs through forms rendered in those environments.

### **DB2 WEB QUERY TOOL VERSION 1.2 FOR MULTIPLATFORMS**

DB2 Web Query Tool is a browser-based enterprise query workbench that supports advanced query capabilities, such as multiple SQL statements and parameterised variables. It lets end users access, create, share, and execute SQL queries through their browsers against multiple IBM DB2 databases on multiple platforms. Data conversion and downloading capabilities make it easy to move data into desktop productivity applications or to other databases. Users can save query results in multiple formats including XML, and integrate query results with popular PC applications such as spreadsheets.

The newest version of DB2 Web Query Tool, Version 1.2, expands user interfaces, database platform access, and available data operations with:

- WAP and e-mail interfaces
- New data operations
- XSL support
- Multiplatform support for DB2 running on AIX, Windows, Linux, Sun Solaris and HP-UX
- Support for Web application server platforms

For more information [ibm.com/software/data/tools](http://ibm.com/software/data/tools)

**call 1300 880 150 for more information or to buy today**

## Reliable data access for efficient e-business application development

### IBM Informix Client Software Development Kit

WNT W2000 W98 W95 LNX AIX  
UNIX HP-UX NUMA-Q SUN



- **Fast application development with reduced costs**
- **Flexibility through support for open standards and familiar programming languages such as Java, C++, C and ESQL**
- **Efficient access to multiple IBM Informix databases from a single application**
- **Ease of use with single-packaged APIs.**

IBM Informix Client Software Development Kit (SDK) is a single packaging of APIs that can speed application development time for Informix servers. The Client SDK 2.70 bundle includes the following components:

- IBM Informix ESQL/C 9.51
- IBM Informix ODBC Driver 3.34 (ASCII) & 3.80 (Unicode enabled)
- IBM Informix OLEDB Provider 2.60 (Win32 only)
- IBM Informix Object Interface for C++ 2.82
- IBM Informix JDBC Driver (Type 4) 1.50
- IBM Informix JDBC Driver (Type 4) 2.20 and Informix Embedded SQLJ 1.01
- IBM Informix Connect.

For more information [ibm.com/software/data/informix/tools/csdk](http://ibm.com/software/data/informix/tools/csdk)

## Visualise and manipulate your enterprise data over the Web

### Office Connect

WNT W2000 W98 W95

- **Data visualisation and reporting for e-business**
- **Improved decision making, response and flexibility**
- **Web-based framework for secure database access and manipulation**
- **Queries HTML data sources over the Internet**
- **Leverages existing office infrastructure**
- **No additional product training or Database/SQL expertise required.**

Office Connect provides users easy, distributed and secure data visualisation and reporting capability using spreadsheet technology in client-server and Intranet/Internet environments. This solution not only works transparently with IBM and Informix Database Servers, but also with any ODBC/OLEDB/JDBC compliant database and HTML data sources.

### Office Connect Personal Edition 3.0 for Small Business

A simple, intuitive, client-server product for Excel users to bind a spreadsheet cell to a database field for retrieval and modification of data.

### Office Connect Web Edition 3.0 for Medium to Enterprise Business

- Web deployment: Web based framework to connect spreadsheets to servers running behind a firewall, for data manipulation over the Web
- Security: User access and role management
- Web query: Map data from a HTML page to a spreadsheet.

For more information [ibm.com/software/data/informix/tools/](http://ibm.com/software/data/informix/tools/)

## Enhanced functions for DB2 users

### Additional DB2 Products

WNT AIX SUN



**There are a number of separately priced products that can be added to your DB2 environment to provide even more capabilities for database users. They allow you to tailor your database environment to specifically address your business requirements. The first group of these additional members of the DB2 product family provides enhanced business intelligence functionality and include:**

#### **DB2 Spatial Extender**

DB2 Spatial Extender allows users to integrate spatial data into their business queries. It supports 13 spatial types to model real-world entities and it conforms to the OpenGIS Consortium (OGC) and ISO standards for storing, indexing, and querying spatial data. The newest version of this feature can now be hosted directly by DB2 Universal Database.

#### **DB2 Net Search Extender**

DB2 Net Search Extender provides a high performance method of searching text stored in DB2 databases. Searching with it is particularly advantageous in Internet applications where performance is an important factor. Net Search Extender can add the power of fast full-text retrieval to Net.Data, Java, and CLI applications. Its features let you store unstructured text documents of up to 2 gigabytes in databases.

#### **DB2 Data Links Manager**

This package facilitates the access of distributed data with the security and ease-of-use of the DB2 user interface. The following enhancements are introduced:

- Support for DCE Distributed File System (DFS)
- Support for Sun Solaris Operating System
- Support for archiving of linked files to Independent Solution Vendors' backup solutions
- Support for replication using the DB2 Data Propagator product

With the newest version of DB2 Data Links Manager, customers are able to use the functionality of Tivoli® Space Manager (TSM) and its virtual file system.

#### **DB2 Universal Database Text Information Extender**

This product provides a new way to search text documents using an SQL query. Supporting HTML and XML formats, it combines the power of a fast text search engine with intelligent strategies of the DB2 Optimiser. This delivers an easy-to-use, highly integrated way to search documents in your database, or external documents using DB2 Data Links Manager.

**Other DB2 products allow users to access data in DB2 and non-DB2 databases. These include:**

#### **DB2 Connect**

Provides transparent access to data in DB2 databases. See Page 39.

#### **DB2 Relational Connect**

DB2 Relational Connect is used in a federated system to query and retrieve data located on other DBMSs, such as Oracle, Sybase, Microsoft SQL Server, and other members of the DB2 Universal Database family (such as DB2 for OS/390®). SQL statements can refer to multiple DBMSs or individual databases in a single statement. It can also be used with Data Warehouse Centre to improve select performance from Oracle sources for loading a DB2 data warehouse.

For more information [ibm.com/software/data/db2](http://ibm.com/software/data/db2)

## Transparent access to data

### DB2 Connect

WNT W2000 W98 W95 LNX OS2

- **Enables fast, secure access from the Web to enterprise data stored in both relational and nonrelational databases**
- **Provides the performance, scalability, reliability and availability needed for the most demanding e-commerce, CRM, BI, and ERP applications**
- **Provides extensive application programming tools for developing client-server and Web applications using industry standard APIs**
- **Integrates mobile PC and pervasive computing device users with up-to-date data from S/390 and AS/400 database servers.**

**DB2 Connect Personal Edition** gives you high-performance, direct access from Windows 95, 98, NT, and

2000; Linux; and OS/2 applications to S/390 and AS/400 data without gateways or host software.

**DB2 Connect Enterprise Edition** is a DB2 communication server designed to address the demanding requirements of Web and application servers needing access to S/390 and AS/400 data.

**DB2 Connect Unlimited Edition** provides both DB2 Connect Personal and Enterprise Editions.

**DB2 Connect Web Starter Kit** provides an economical way to evaluate solutions and develop applications. It contains all the DB2 Connect Enterprise Edition servers and allows unlimited use for a nine-month license period.

For more information [ibm.com/software/data/db2/db2connect](http://ibm.com/software/data/db2/db2connect)

## Access data from multiple databases

### DB2 DataJoiner

WNT AIX SUN

- **Powerful, multi-vendor database joins: With DB2 DataJoiner<sup>®</sup> V2.1.1, you only need to send one query to get the answer from different data sources. These sources include DB2, IMS<sup>†</sup>, VSAM<sup>†</sup>, Oracle, Oracle Rdb, Sybase, Sybase SQL Anywhere<sup>†</sup>, Microsoft SQL Server, Informix, and others.**

With DB2 DataJoiner Version 2.1.1, you can access and join data from different data sources with a single Structured Query Language (SQL) statement and a single interface. That single interface hides all the differences you struggle with when accessing information from different vendor databases on different vendor platforms. With the single interface of DataJoiner it's like having one big database.

<sup>†</sup> Not available with Sun's Solaris



For more information [ibm.com/software/data/datajoiner/features.html](http://ibm.com/software/data/datajoiner/features.html)

## Seamless access to non-Informix databases

**IBM Informix Enterprise Gateway Manager**

**WNT AIX  
HP-UX SUN**



**The core of IBM Informix Enterprise Gateway Manager is an SQL-based gateway that allows a customer's Informix tools, applications, and databases to interoperate transparently with non-Informix databases. Enterprise Gateway Manager helps customers migrate from or coexist in a heterogeneous environment.**

Enterprise Gateway Manager translates Informix SQL requests into ODBC-compliant function calls. Users can access data on the target DBMS from Informix client applications written products such as IBM Informix ESQL/C, using an OnLine 5.x or DSA-based engine to coordinate a distributed join. Additional features include:

- Access to non-Informix data sources through ODBC drivers that can be loaded dynamically
- Distributed joins with DB2, Informix, Oracle, and Sybase data in a single SQL statement
- Security for only authorised users
- Unrestricted connection support
- Scrolling cursor support.

For more information [ibm.com/software/data/informix/tools/egm](http://ibm.com/software/data/informix/tools/egm)

## Support for key e-business solutions

**IBM's Enterprise Content Management Infrastructure**

**e-business solutions using IBM's Enterprise Content Management Infrastructure provide application support in key areas such as:**

### **CRM**

Excellent customer service is a cornerstone of your business. Whether you use the Siebel Call Centre application or any other CRM application, IBM Content Manager can serve as a foundation for making all types of data and content available to your CSR's for one-call-and-done results. Seamless software integration and superior implementation services create a CRM environment that will keep your business on top of the heap.

[ibm.com/software/data/cm/siebel.html](http://ibm.com/software/data/cm/siebel.html)

### **ERP and SCM**

Capture, store, manage, distribute, and integrate digital content in your entire enterprise relating to critical ERP and SCM applications. Improve operational efficiencies throughout your organisation from human resources, corporate training and marketing--all the way through to transaction data storage, e-commerce catalogues, and portals for true information integration. IBM Content Manager can serve as the foundation for corporate-wide content access.

[ibm.com/software/data/cm/about.html](http://ibm.com/software/data/cm/about.html)

### **e-mail Archiving**

e-mail correspondence and attachments are growing at an unprecedented pace. How can you maintain an adequate amount of data while minimising disk space and maximising server productivity? IBM Content Manager CommonStore for Lotus Domino and CommonStore for Exchange Server provide secure, enterprise-level archiving for e-mail, e-mail attachments and Notes databases. e-mail administration has never been this easy.

[ibm.com/software/data/commonstore](http://ibm.com/software/data/commonstore)

### **Rich Media Experience**

Applications that utilise rich media are limited only by your imagination. Deliver on-demand video clips of how to fix a piece of machinery to a remote location. Use your corporate portal to deliver live, streamed executive messages on quarterly results. Give your claims processors access to photographs and audio testimonials of accident witnesses for accurate processing. All of these applications and more based on IBM's Enterprise Content Management Infrastructure.

[ibm.com/software/data/cm/cmgr](http://ibm.com/software/data/cm/cmgr)

## Content Manager: e-content for e-business solutions

IBM Content Manager

WNT W2000 AIX HP-UX SUN



The **IBM Content Manager portfolio** provides the infrastructure for true enterprise content management, to help you leverage your e-business initiatives and maximise return on investment. IBM Content Manager offerings efficiently manage and deliver content – be it business documents, statements or invoices, audio/video, XML/HTML and more.

The Content Manager portfolio includes the following offerings:

**IBM Content Manager** is designed to manage and administer any content type, providing logically organised, central and/or distributed repositories of unstructured information commonly located in file cabinets or microfilm archives, with workflow capabilities and out-of-the box Windows and browser client applications.

**IBM Content Manager OnDemand** automatically captures, manages, stores, and retrieves high volumes of printed application output – making paper and microfiche archives obsolete.

**IBM Content Manager CommonStore for SAP**, a certified solution for SAP R/3, enables enterprises to electronically archive, manage and retrieve SAP R/3 data and documents.

**IBM Content Manager CommonStore for Lotus® Domino** offloads documents and e-mails from Notes databases for long-term storage and convenient retrieval.

**IBM Content Manager CommonStore for Exchange Server®** is an e-business solution that provides users direct access to e-mail messages and attachments archived from a Microsoft Exchange 2000 server(s).

**IBM Content Manager VideoCharger** enables high quality audio and video streaming for Video on Demand, Corporate Training, or Corporate Communications.

**IBM Content Manager Entry Bundle** is a new offering that provides an affordable way for small businesses to deploy a centralised content repository, with easy user search and retrieval. It consists of "per concurrent user" licenses of:

- IBM Content Manager for Multiplatforms
- IBM Content Manager OnDemand for Multiplatforms
- IBM EIP Client Kit for Content Manager

**IBM Content Connector for Panagon® Image Services** allows IBM Content Manager and IBM Enterprise Information Portal (EIP) users to access enterprise-wide content stored in both IBM Content Manager and FileNET Panagon Image Services (IDMIS 3.5.0) servers.

**IBM Enterprise Information Portal** provides the foundation for a single point of access to both structured and unstructured, IBM or non-IBM information sources. It supports federated search across Content Manager servers. The architectural design provides the foundation and toolkit to develop connectors to additional data sources such as business applications, file systems, collaborative and relational databases.

For more information [ibm.com/software/data/cm](http://ibm.com/software/data/cm)

## Manage and access the DB2 Data Warehouse Centre with ease

**DB2 Warehouse Manager****WNT W2000 AIX SUN OS2**

**DB2 Data Warehouse Centre provides an integrated, easy-to-use infrastructure for creating and managing data warehouses. DB2 Warehouse Manager is a separately priced feature that enhances the scalability, manageability, and accessibility of the DB2 Data Warehouse Centre by providing:**

- **Superb scalability with point-to-point data movement options for distributed systems**
- **Faster deployment via common, pre-built warehouse and statistical transformations**
- **Governing functions that allow the data centre to manage query workloads**
- **Information on resource and user access history to charge-back and to pinpoint most-used data for tuning, or identify least-used data for archiving**
- **An information catalogue that helps end-users find, understand and access relevant information**
- **Enterprise reporting to develop and deliver reports to unlimited clients**
- **Three new connectors that provide access to data that is managed by applications like SAP R/3, i2 TradeMatrix BPI and webmarts.**

### **DB2 Warehouse Manager includes DB2 Query Patroller, Information Catalogue, and QMF for Windows - all with expanded capabilities**

**DB2 Query Patroller:** Provides the extensive query governing that gives control to the data centre to govern queries, analyse costs, manage resources and track usage. Enhanced functions of DB2 Query Patroller now include:

- “Query trap” support on DB2 Client platforms
- Ability to trap dynamic SQL queries regardless of the API
- High availability through a retry mechanism that allows automatic restart following a database server failure.

**Information Catalogue:** Assists with finding, understanding and accessing available information by:

- Populating the catalogue by interchanging metadata with the Data Warehouse Centre and other analytical tools including 1-2-3, Brio\*\*, Business Objects, Excel\*\*, QMF for Windows and others
- Allowing users to directly register shared information objects
- Providing navigation or searching across objects to find relevant information
- Displaying the metadata about the object including name, description, contact, currency, lineage, and tools.

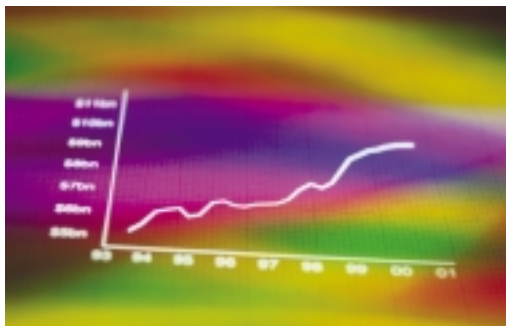
**QMF for Windows:** This is the third product integrated into DB2 Warehouse Manager. It provides a multi-purpose query tool for business reporting, data sharing, server resource protection, robust application development and native connectivity to all DB2 workstation platforms.

DB2 Warehouse Manager and Data Warehouse Centre are meant to be replacements for Visual Warehouse.

For more information [ibm.com/software/data/db2/warehouse](http://ibm.com/software/data/db2/warehouse)

**call 1300 880 150 for more information or to buy today**



*Business intelligence starts here!***IBM Query Management Facility for DB2 Workstation Databases****WNT W2000 W98 W95**

- **Simplifies query and reporting tasks**
- **Allows users to create and run QMF objects with a Java enabled browser**
- **Provides capability for visualising data spatially and with charts**

QMF for Windows is a multipurpose enterprise query environment for large-scale business reporting, data sharing and native connectivity to all of the DB2 workstation platforms, including Linux on S/390 platforms. It allows beginners or experts to formulate and share business reports. It also provides server resource protection and powerful application development, including procedures with logic using IBM Object REXX.

QMF for Windows V7.2 offers new capabilities for visualising data spatially and with charts, connection options to ODBC-compliant data sources, new administrative options, great ease of use, and significant new functions for creating and running QMF objects with Java-enabled browsers.

For more information [ibm.com/qmf](http://ibm.com/qmf)

*The platform for business analysis, planning and forecasting***DB2 OLAP Server****WNT W2000 AIX HP-UX SUN**

**DB2 OLAP Server™ V8.1, based on Hyperion Essbase XTD, provides a complete OLAP (online analytical processing) server that:**

- **Enables fast, intuitive, multidimensional data analysis**
- **Combines the high performance of Multidimensional OLAP with relational scalability**
- **Lets you exploit hardware with parallel calculation and data load**
- **Gives you a single point of administration for managing multiple OLAP Servers**
- **Allows you to integrate information from multiple data sources**
- **Offers a 100% Java™-compliant Analyser for graphical analysis and reporting**
- **Enables you to automate the discovery of atypical patterns in your cubes**

DB2 OLAP Server\* gives you a fast path to turn your warehouse data into business insight and is built for e-business with tools to help you quickly deploy Web-based analytical applications. It is a scalable, industrial-strength Online Analytical Processing (OLAP) software that enables you to build sophisticated decision support, planning, and analysis applications for your enterprise. This powerful platform, also supports all major data warehouses and is easy to integrate into any computing environment. Its leading-edge features include rapid response times in networked environments, large-scale data capacity, multi-user read/write access, flexible data navigation and linked reporting objects.

For more information [ibm.com/software/data/db2/db2olap](http://ibm.com/software/data/db2/db2olap)

## Intelligent Miner\* reveals corporate gems

**DB2 Intelligent Miner for Data**

**WNT W2000 AIX SUN**



- **Uncovers hidden patterns and predicts future behaviour enabling you to gain a competitive advantage**
- **Mines data in DB2 databases, flat files, or other relational databases via DataJoiner.**

This powerful, award-winning collection of tools arms your analysts and business technologists with superior data mining support, including data processing, statistical analysis and results visualisation capabilities.

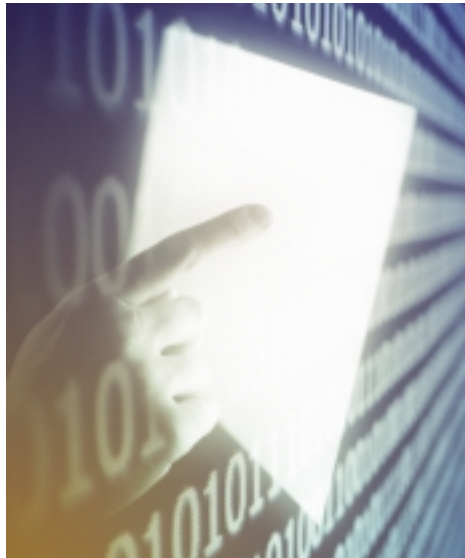
At the heart of Intelligent Miner for Data are its innovative mining algorithms that make for more intuitive and strategic decision-making. These algorithms can be used individually or in combination to address a wide range of business problems and, more importantly, deliver measurable results.

For more information [ibm.com/software/data/iminer/fordata](http://ibm.com/software/data/iminer/fordata)

## Put data mining analytics into play closer to the user

**DB2 Intelligent Miner Scoring**

**WNT W2000 LNX AIX SUN**



- **Pre-built scoring functions delivered as DB2 extenders**
- **Simple, easy-to-use SQL programming interface**
- **DB2 parallel processing for mass scoring operations**
- **DB2 for access to federated data**
- **Mining models updated without disruption to production systems**
- **Implemented to new industry standards for data mining - ISO SQL and Predictive Modeling Markup Language (PMML)**
- **Support for all DB2 Intelligent Miner for Data V6 scoring functions**
- **Oracle cartridge implementation also provided.**

Intelligent Miner Scoring enables users to leverage advanced business intelligence at the point of user contact by scoring or ranking the subject of that transaction in real time. IM Scoring can influence the handling of transactions as they occur in BI, e-Commerce and OLTP applications. This new data mining technology can help businesses develop personalised treatment for customers and suppliers, as well as offer guidance to employees for more informed decision making.

For more information [ibm.com/software/data/iminer/scoring](http://ibm.com/software/data/iminer/scoring)

**call 1300 880 150 for more information or to buy today**

## Comprehensive text analysis and search

**DB2 Intelligent Miner for Text**

**WNT AIX**



DB2 Intelligent Miner for Text offers system integrators, solution providers, and application developers a wide range of sophisticated text analysis tools; a full-text search engine enhanced with text mining functions; and a Web Crawler to enrich business intelligence, content management, and knowledge management solutions.

Intelligent Miner for Text V2.3 offers the following key features:

– **Text Analysis Tools**

- Language identification to discover the language of a document
- Clustering to group related documents by contents
- Categorisation to assign documents to a set of pre-defined categories
- Summarisation of documents
- Feature extraction to identify key elements of free-text

– **Text Search Engine** to search textual information and to uncover related concepts with Java-based samples for GUI application development

– **Web Crawler** package consisting of a toolkit and a ready-to-run Web Crawler

– **Flexible and ready-to-use** NetQuestion Web-search Solution

For more information [ibm.com/software/data/iminer/fortext](http://ibm.com/software/data/iminer/fortext)

## Leveraging data for faster, better decision making

**IBM Red Brick Warehouse**

**WNT W2000 LNX  
AIX UNIX HP-UX SUN**



- **High-speed, high-volume query performance**
- **High-performance data management**
- **Linear scalability for unlimited growth**
- **Low cost of ownership**
- **Open standards based**
- **Simple configuration and administration.**

IBM Red Brick Warehouse is a database server designed to meet the specialised requirements for business-critical, high-demand data analysis. It provides a robust and scalable platform for developing star schema-based decision support applications, through the application of innovative technology. Designed to be practical, cost effective, and scalable, IBM Red Brick Warehouse enables more users to analyse more data and make better decisions faster than with a general-purpose database.

Building on the Red Brick history of easy implementation, low maintenance, and high performance, V6.10 and V6.11 releases include the following new features:

- Simplified summary table maintenance
- Integrated backup and restore
- Sampling
- Data loading enhancements
- Query optimisations
- Additional platform support
- Connectivity enhancements.

For more information [ibm.com/software/data/informix/redbrick](http://ibm.com/software/data/informix/redbrick)

## Comprehensive management of your IT infrastructure

IBM Tivoli Performance and Availability Management Solutions

WNT W2000 AIX UNIX HP-UX SUN



IBM Tivoli's performance and availability products continue to provide leadership in the changing market by transitioning customers to a proactive business impact management model that integrates Web-based architectures. The following Tivoli products provide integrated e-business infrastructure management solutions for monitoring, event management, and business impact management:

**IBM TIVOLI MONITORING** – allows customers to apply preconfigured best practices out-of-the-box to automate the task of monitoring system resources, to detect bottlenecks and potential problems, and to automatically recover from critical situations. It provides the foundation for additional Best Practices via Proactive Analysis Components (PACs) for managing business critical hardware and software including middleware, applications, and databases.

**IBM TIVOLI MONITORING FOR TRANSACTION PERFORMANCE** – ensures the availability and performance of e-business and enterprise transactions. This is achieved by measuring actual customer response times, measuring prerecorded or real transactions at regular intervals, and scanning a Web site for potential problems, such as links that do not function.

**IBM TIVOLI ENTERPRISE CONSOLE** – is an enterprise event management system that receives events from monitoring devices throughout the environment (both Tivoli and non-Tivoli) and the network through an enhanced interface with NetView. These events are analysed and correlated to determine the true multi-layer root cause. Predetermined actions and/or escalations can then be initiated based on the root cause, accelerating restoration time, minimising costs and maximising availability.

**IBM TIVOLI SWITCH ANALYSER** – combines with IBM Tivoli NetView to deliver a fully integrated, comprehensive multi-layer network management tool based on proven market leading technology. It utilises the existing NetView console and command set along with auto-discovery and automatic correlation of Layer-2 and Layer-2 events to determine network root cause and provide complete availability management of network devices. This powerful integration and automation significantly improves ease-of-use and minimises the learning curve for IT staff, making time to value almost immediate.

**IBM TIVOLI NETVIEW** – is a network management solution that enables users to discover TCP/IP networks, display network topologies, correlate and manage events and SNMP traps, monitor network health and gather performance data. Using "SmartSets," collections of user-defined groups, IBM Tivoli NetView can manage beyond the level of device availability, allowing the customer to develop a management solution based on the entire business system. Performance monitors for TCP/IP and for SNA and TN-3270 networks are available as separate products. They report network communication, performance, and utilisation and provide the timely analysis of traffic flow, transit times, and component use needed for network tuning.

**IBM TIVOLI SERVICE LEVEL ADVISOR** – simplifies the process of defining, monitoring and managing your service level agreement (SLA) service offerings. Tivoli Service Level Advisor can help simplify and automate SLA management and reporting. It helps you communicate IT value and service delivery through web-based reporting. It provides alerts for SLA violations and trends toward violations, helping you proactively correct service level problems.

**IBM TIVOLI WEB SITE ANALYSER** – designed to help you gain insights into the health and integrity of web server and web site infrastructure, to provide a window into the effectiveness of e-business initiatives. IBM Tivoli Web Site Analyser identifies performance trends and patterns of web server usage, traffic and visitor behavior in a way that helps you evaluate the impact of web-based marketing programs.

**IBM TIVOLI BUSINESS SYSTEMS MANAGER** – provides a single, simple-to-use interface for consolidating management information into a business-centric view, from across your environment – including distributed, web and mainframe components. The software is capable of automatically discovering many of the IT resources in your environment, based on the tools you are currently using to manage them. IBM Tivoli Business Systems Manager then gives you the ability to display those resources in a logical, business-oriented view – showing the particular business process served by a group of components.

**IBM TIVOLI MONITORING FOR APPLICATIONS** – is comprised of Proactive Analysis Components, or PACs for industry leading applications. The purpose of a PAC is to monitor and manage a specific application area. The mySAP.com PAC is designed to manage SAP's mySAP.com e-business platform, focusing on proactive management and reporting of all key architecture components such as Web Application Servers, R/3 and mySAP applications and the new WebSphere Portal Family. The Siebel eBusiness Applications PAC enables you to manage Siebel application throughout the enterprise, all from a centralised console.

call **1300 880 150** for more information or to buy **today**

## Comprehensive management of your IT infrastructure

### IBM Tivoli Performance and Availability Management Solutions (cont.)

**IBM TIVOLI MANAGER FOR DATABASES** – consists of three PACs that help ensure the availability and optimal performance of DB2, Oracle, and Informix servers. The primary objective is to provide routine, consistent monitoring and to anticipate and correct problems before database performance and customer confidence is degraded.

**IBM TIVOLI MANAGER FOR WEB INFRASTRUCTURE** – is designed to help ensure the availability and optimal performance on the critical Web resources such as Web servers and Web application servers. This product captures detailed status and performance metrics from the most commonly used Web infrastructure products. It then transforms this data into useful information for Systems Administrators by applying intelligence and delivering it via an intuitive user interface.

**IBM TIVOLI MANAGER FOR MESSAGING AND COLLABORATION** – as part of an integrated e-business infrastructure management solution, this product provides the monitoring tools to improve performance, availability, and administration of Lotus Domino, Lotus Sametime, and Lotus QuickPlace servers.

**IBM TIVOLI MANAGER FOR BUSINESS INTEGRATION** – manages Message – queuing and integration middleware as an integral component of larger business systems – linking its management to databases, applications, and other middleware products spanning host and distributed systems. It provides IT managers with the information they need to understand the business-level impact of this middleware availability and performance. Host and distributed systems can be managed from the same desktop so systems administrators learn only one tool.

**TIVOLI MANAGER FOR SECURITY & EDGE SERVICES** – is designed to help an enterprise manage the complexity of modern computing environments. It simplifies the security management of geographically dispersed users, applications and resources. It also strengthens the total security system associated with internal users (i.e. network and dial-in connections) as well as external users (i.e. supply-chain partners and e-commerce customers).

For more information [info.tivoli.com/Catalog-P&A](http://info.tivoli.com/Catalog-P&A)

## Gain centralised control

### IBM Tivoli Configuration and Operations



**Tivoli's Configuration and Operations management solutions enable enterprise customers to reduce cost, gain automated control of e-business infrastructure and improve productivity through effective change and configuration management, and job scheduling. They include:**

**IBM TIVOLI REMOTE CONTROL** – The industry's first and only enterprise scale remote control product. It provides complete real-time remote control, the ability to quickly establish connections when there are thousands of potential targets, the ability to control not just desktop systems but distributed applications, and an enterprise class security model to protect against abuse.

**IBM TIVOLI CONFIGURATION MANAGER** – Designed for full-cycle deployment and configuration management capability, it focuses on deploying and managing software on an enterprise scale. IBM Tivoli Configuration Manager is a key solution for customers who need to rapidly and efficiently deploy complex mission-critical or desktop productivity applications to multiple locations from a central point.

**IBM TIVOLI WORKLOAD SCHEDULER** – The production automation solution for managing workloads in today's complex computing environments. No matter how complex the computing environment, IBM Tivoli Workload Scheduler schedules, coordinates and automates mission-critical application execution across the enterprise, ensuring consistent and reliable operations. IBM Tivoli Workload Scheduler's underlying architecture ensures that business and mission-critical applications run within an infrastructure that is secure, fault-tolerant, and scalable. From a single point of control, it supports multiple platforms, from mainframes to UNIX to Windows, and has advanced integration with enterprise applications like SAP R/3, Oracle Applications, PeopleSoft and Baan when used in conjunction with the IBM Tivoli Workload Scheduler Applications Extension product.

For more information [info.tivoli.com/Catalog-C&O](http://info.tivoli.com/Catalog-C&O)

## Centralised storage management for ease of administration

IBM Tivoli Storage Manager

WNT W2000 AIX HP-UX SUN



**IBM Tivoli Storage Manager** protects your organisation's data from hardware failures and other errors by storing backup and archive copies of data on offline storage. Tivoli Storage Manager's centralised web-based management, smart-data-move and store techniques and comprehensive policy-based automation work together to minimise costs and impact to computers and networks. It has many attributes that set it apart from other storage solutions, including:

### Centralised, Comprehensive Management

Tivoli Storage Manager, a client-server application, is administered via a hierarchy of administrators with different management authority levels and specific "domains" defining user groups or applications. Multiple Tivoli Storage Manager servers can be controlled from any Tivoli Storage Manager server or via a Web interface from any computer. Data restore requests can be initiated and controlled from the client, greatly reducing workload for the administrator.

### Broad Hardware Support

Tivoli Storage Manager client software supports 17 different operating systems, and the server software runs on eight different operating systems. Platforms vary from laptops to mainframes, and servers can be combined with virtually any client – cross-platform. Networks supported include dial-up, the Internet, WAN, LAN and SAN. Tivoli Storage Manager supports more than 500 offline storage devices including optical disk and tape libraries.

### Intelligent Data Movement

Tivoli Storage Manager uses multiple techniques to reduce data transfer sizes to the minimum possible:

- *Progressive, incremental backup* – only backs up new or changed files
- *Adaptive sub file differencing* – just the portion of the file that has changed is backed up.

These techniques can reduce the time required for data backups and more importantly data restores. This means users can backup over a WAN or telephone line, because of the small amount of data that is sent.

### Intelligent Data Storage

The heart of the Tivoli Storage Manager server is an integrated, relational database that catalogues each data transfer – backup, archive, HSM, etc. – and a complete set of data for every client.

*Storage hierarchy* – Tivoli Storage Manager makes the first transfer to a disk storage pool. After a specified length of time (hours, days, weeks, etc), the data in this storage pool is automatically migrated to other less-expensive offline storage devices. Storage resources are used more efficiently, restore time is minimised and data can be easily moved from one type of storage to another.

*Tape reclamation* – Tivoli Storage Manager automatically deletes files marked for expiration and reclaims space freed by moving remaining un-expired files to other tape volumes.

*Collocation* – keeps data grouped in logical sets, helping to optimise the performance of data restores for multiple clients.

### Policy-based Automation

An extremely granular policy-based engine automates the management capabilities of Tivoli Storage Manager. This engine can be configured down to the individual file level to govern what data to transfer and where to transfer it, when check for changes and, if it must be transferred, how that transfer should take place. The goal is to give you a "set-it and forget-it" application for "lights-off" implementations. Policies can be set as simple defaults, or highly tuned and customised to help keep costs low and still meet specific service level agreements.

Tivoli Storage Manager Enterprise Edition provides disaster recovery preparation and data archive and retrieval, as well as hierarchical storage management. Tivoli software also offers optional add-on modules that allow business critical applications to utilise Tivoli Storage Manager's centralised data protection. The add-on modules include:

- IBM Tivoli Storage Manager for Mail
- IBM Tivoli Storage Manager for Databases
- IBM Tivoli Storage Manager for Enterprise Resource Planning
- IBM Tivoli Storage Manager for Application Servers
- IBM Tivoli Storage Manager for Hardware

For more information [www.tivoli.com/storage](http://www.tivoli.com/storage)

call **1300 880 150** for more information or to buy **today**

## Integrated security to enable e-business

IBM Tivoli Security Solutions

WNT W2000 AIX UNIX HP-UX SUN



**Tivoli software from IBM provides integrated security solutions that help remove many of the security barriers, so you can quickly deploy secure e-business initiatives, consistently enforce security and privacy policies, and simplify security administration. Tivoli security solutions address the key areas of access management, identity management, threat management and privacy management.**

### Access Management

**IBM Tivoli Access Manager** for e-business – Provides flexible, single sign-on to Web applications across multiple portals. It provides centralised user access control from browsers, PCs and wireless devices to any Web server, using various forms of authentication, without rewriting applications.

Security rules can be consistently enforced across portals such as IBM WebSphere and Plumtree, customer applications such as Siebel, supply chain applications such as SAP, messaging applications such as IBM WebSphere MQ, Java-based application servers such as IBM WebSphere and BEA WebLogic, object-oriented application servers, enterprise UNIX platforms, and many others out of the box.

IBM Tivoli Access Manager for e-business helps enable quick deployment of secure Web applications by removing the need for application developers to code customised security into each application. It can also help reduce security costs through capabilities such as centralised administration and Web-based delegation.

### Identity Management

**IBM Tivoli Identity Manager** – Helps bring systems and applications online and productive faster, while minimising administration costs. Tivoli provides centralised user account creation (including self-registration), workflow for automating the necessary approvals process, and the actual provisioning of resources.

From the user's point of view, Tivoli provides outstanding ease of use, with support for self-service, Web-based password resets and account updates. From the administrator's point of view, Tivoli's solution is extremely powerful, with support for multiple-level, Web-based delegated administration, advanced auditing and reporting, and support for a broad set of resources, including applications and portals, and heterogeneous servers.

### Threat Management

**IBM Tivoli Risk Manager** – Helps companies mitigate, manage, and quickly respond to security attacks by utilising a centralised management console, advanced event correlation, and reporting/analysis tools. Tivoli helps detect viruses or malicious acts, and can reduce the costs and complexity of managing disparate security products, like firewalls, intrusion detectors, vulnerability scanning tools, and other security checkpoints.

Centrally correlating information can help eliminate clutter, such as false-positive alerts, while quickly identifying real security threats and determining the severity of those attacks. This can speed response time to threats and help avoid loss of revenue due to downtime.

Threat management decision support tools provide insight into patterns of intrusions, as well as compliance with security policies. These tools can help identify security exposures, allowing them to be corrected before a security breach occurs.

### Privacy Management

**IBM Tivoli Privacy Manager** – Provides a centralised view of a company's privacy policy, enables the company to manage the privacy sensitive data it collects, and monitors and reports on its compliance to those practices.

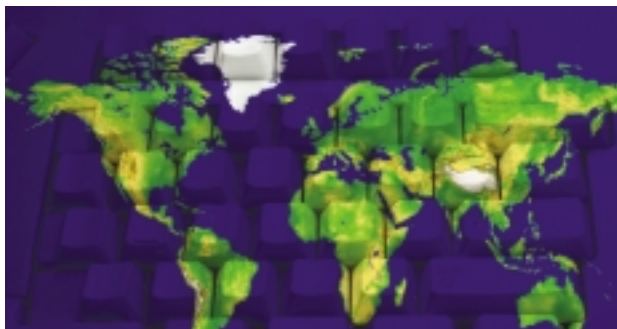
Tivoli security solutions can enable e-businesses to increase revenues by providing secure access for customers, prospects and partners, optimising operational expenses through centralised single-action management, and effectively managing security threats, attacks and exposures across the entire organisation.

For more information [www.tivoli.com/security](http://www.tivoli.com/security)

## *Real-time collaboration that's fit for e-business*

**Lotus Sametime**

**WNT W2000 W98 W95**



As a leader in real-time collaboration for e-business, Sametime can make working with your extended team easier than ever before. Sametime goes beyond secure instant messaging, including using the Web to improve customer service, reduce travel costs, and create communities among your employees, customers, partners, and suppliers.

For more information [www.lotus.com/sametime](http://www.lotus.com/sametime)

- **Collaborate securely in real-time over the Web**
- **Instant message, share your screen, and whiteboard ideas with your colleagues through a Web browser**
- **Easily add instant messaging or application sharing to your Web site to improve customer service and create efficiencies with your extended team.**

## *Instant team workspaces for the global enterprise*

**Lotus QuickPlace**

**WNT W2000 W98 W95 SUN**

### **Features include:**

- **Task Management—including Gantt chart view summary**
- **Office 2000 integration**
- **Instant Chat**
- **Shared team calendar**
- **Customised themes and templates for specific business processes**
- **Ability to work offline**
- **Available on 5 platforms and 14 languages.**

Lotus QuickPlace is a self-service tool for Web-based team collaboration. Teams use QuickPlace to centrally share and organise ideas, content, and tasks around any project or adhoc initiative. QuickPlace improves (both internal and external) team communication/collaboration process and efficiency, time to response and action, navigation of information, and the ability of team members to participate in the planning, creation, and sharing of content and deliverables.

For more information [www.lotus.com/quickplace](http://www.lotus.com/quickplace)

**call 1300 880 150 for more information or to buy today**



## The ultimate e-business client

**Lotus Notes R5**

WNT W98 W95

- **A leading e-mail and collaboration software for the Internet**
- **Securely and easily manage information and collaborate - even when disconnected.**

Imagine the World Wide Web with its point-and-click ease plus world-class messaging and collaboration - all in an easy-to-use, customisable environment. With Lotus Notes R5, you have the best of both worlds. Notes lets you manage all your information needs in a single application - combining e-mail, calendaring, group scheduling, contact and task management, knowledge management and the Web.

For more information [www.lotus.com/notes](http://www.lotus.com/notes) or [www.lotus.com/inotes](http://www.lotus.com/inotes)

## Rich enterprise e-mail and collaboration

**Lotus Domino R5 Servers**WNT LNX AIX  
HP-UX SUN OS2

- **Integrates your company's messaging and Web application software**
- **Fosters successful collaboration with rich Internet messaging, ease of administration, integration with back-end systems and reliability**
- **The only server solutions built on an open, unified architecture.**

Meet the Domino R5 Server family. The Domino R5 Mail Server runs on your existing hardware, software, and networks and provides superior support for e-mail, Web access, online calendaring, and more. The Domino R5 Application Server lets you deliver easy-to-integrate, collaborative Web applications. The Domino R5 Enterprise Server adds high-availability clustering for mission-critical applications. In addition, the Domino R5 family features an open, unified architecture and sets new standards for reliability, Internet messaging functionality and administrative ease.

## Rapidly build e-business apps

**Lotus Domino Designer R5**

WNT W98 W95 MAC

- **Contains everything you need to create collaborative, end-to-end e-business solutions**
- **Connects Web applications to live data in relational databases, ERP applications and Transaction Processing Systems.**

Domino Designer R5 is the fast, cost-effective way to create collaborative e-business solutions. This world-class development environment includes WYSIWYG HTML authoring, site/page and frameset design, and client and server-side scripting. Lotus Domino Designer R5 gives you the power to "build locally, deploy globally".

For more information [www.lotus.com/dominodesigner](http://www.lotus.com/dominodesigner)

*A better value! A better way to work the Web!*

Lotus SmartSuite Millennium Edition

WNT W2000 W98 W95



- **File filters in SmartSuite exchange documents seamlessly to and from Freelance Graphics and PowerPoint, Word Pro and Microsoft Word, or 1-2-3 and Excel**
- **Integrated with strategic enterprise systems and database applications including Lotus Notes, Lotus Domino, SAP, PeopleSoft, Oracle, Sybase, and IBM's MQSeries, DB2, QMF, and Net.Data**
- **Lotus SmartSuite 9.6 is the next generation all-in-one office suite solution that will help both the individual and enterprise user meet today's business demands.**

#### SmartSuite

SmartSuite Millennium Edition is the award-winning desktop office suite containing Lotus 1-2-3 spreadsheet, Organiser time, information and contact manager, Word Pro word processor, Freelance Graphics presentation graphics, and Approach database. It is supported on Windows 98, ME, NT, 2000, and XP.

SmartSuite 1.7 for OS/2 is the desktop office suite containing Lotus 1-2-3 spreadsheet, Organiser time, information and contact manager, Word Pro word processor, Freelance Graphics presentation graphics, and Approach database. OS/2 Warp FixPak 15 or Convenience Package 1 (or higher) is required.

#### 1-2-3

Lotus 1-2-3 Millennium Edition for Windows combines over 15 years of computer productivity innovations into the world's most famous spreadsheet. It provides users with everything they need to find, publish and share information across the Internet and intranets right from within 1-2-3 and delivers powerful, built-in tools for automating spreadsheet tasks and building custom business solutions.

The standalone version of 1-2-3 is Release 9.5 and is supported on Windows 95, 98 and NT only. The latest version of 1-2-3 that supports Windows 98, ME, NT, 2000, and XP is available only as part of SmartSuite 9.7.

#### Organiser

Award-winning Lotus Organiser R6 integrates an on-screen Calendar, Contacts, To Do, Web, Notepad, Calls, Anniversary sections and Internet scheduling, all into one convenient package. Organiser R6 includes a host of powerful features to help you take advantage of the latest business technologies – like PDAs, cell phones and the Web.

The standalone version of Organiser is Release 6 and is supported on Windows 95, 98 and NT only. The version of Organiser in SmartSuite 9.7 supports current operating systems such as Windows ME, 2000, and XP. This version is only available as part of SmartSuite 9.7.

For more information [www.lotus.com/smartsuite](http://www.lotus.com/smartsuite)

**call 1300 880 150 for more information or to buy today**

## Find what you need to succeed

**Lotus Discovery  
Server**

**WNT W2000  
W98 WMe W95**



- **Built-in collaboration tools for instant messaging and project management**
- **Automated services for analysing and categorising information and expertise to reveal the relationships in an easy-to-use interface that can be searched or browsed**
- **Aggregates structured and unstructured information from multiple systems and sources**
- **Collaborative e-business solution that bridges people and knowledge.**

The Lotus Discovery Server is the most comprehensive knowledge server for today's e-business users. Search for answers with the easy-to-use K-map user interface, or check in-depth expertise profiles to see who knows what. Built-in collaboration features allow users to initiate instant messages directly from the K-map.

For more information [www.lotus.com/discovery](http://www.lotus.com/discovery)

## Document management

**Lotus Domino.Doc**

**WNT W2000 AIX SUN**

- **Improve organisational efficiency by managing knowledge and intellectual assets**
- **Manage the lifecycle of a document – from authoring through review, approval, distribution and archiving**
- **Integrate with Lotus Workflow and Sametime to provide document management in a collaborative environment.**

Lotus Domino.Doc provides a secure, scalable document management system that enables organisations to leverage knowledge across an enterprise. Its open architecture allows customers to customise Domino.Doc to meet their needs.

For more information [www.lotus.com/dominodoc](http://www.lotus.com/dominodoc)

## Enterprise workflow automation

**Lotus Workflow**

**WNT W2000 LNX AIX SUN**

- **Develop, manage, and monitor business processes**
- **Reduce costs by improving processes and response times**
- **Integrate with Domino.Doc to automate document routing and updating, and with Sametime for instant collaboration.**

Lotus Workflow provides a platform for automating, refining and managing complex business processes. Using Lotus Workflow, you can create applications that perform processes more quickly with fewer bottlenecks. Lotus Workflow application leverage the domino integrates easily with Domino Workflow applications can easily be written for Domino environments. New Java application interfaces provide integration with WebSphere.

For more information [www.lotus.com/workflow](http://www.lotus.com/workflow)

## Simplify your transition to e-business and Web-based solutions

OS/2 Warp Server for e-business

OS2



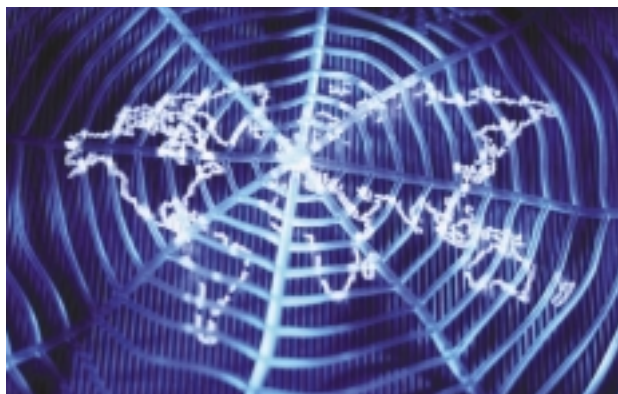
- **Builds on the proven strengths of OS/2 Warp Server V4**
- **Integrates Windows NT 4.0 servers seamlessly into the OS/2 network and provides full, managed access to Windows NT file, print and application servers**
- **Allows you to leverage your current assets while simplifying your transition to e-business and Web-based solutions**
- **Delivers exceptional scalability for demanding e-business requirements**
- **Leading-edge Web technologies to support e-business transformation**
- **Broad, Intel-based industry client support and the Intel-based platform for server-managed clients**
- **Network operating system suitable for all sizes of installations.**

For availability of new features and functions for OS/2 Warp Server for e-business, visit our Software Choice Web site at: [ibm.com/software/os/warp/swchoice](http://ibm.com/software/os/warp/swchoice)

For more information [www.ibm.com/software/os/warp/warp-server/](http://www.ibm.com/software/os/warp/warp-server/)

## The Internet of the future is here

Pervasive Computing



The desire to access information from anywhere at anytime through any device on any network is a reality; which provides businesses with new opportunities to deliver information to a variety of devices.

The global Internet economy that was built around desktop PCs is expanding to incorporate a galaxy of smaller, simpler devices – cell phones, palm devices; in-vehicle information systems and more. By incorporating these devices into your network your business can move into the world of pervasive computing and wireless e-business.

IBM has the following software offerings to support your implementation of pervasive computing. They include:

### **WebSphere Everyplace Server (Access, Enable, and Service Provider Offerings)**

- integrated packages based on WebSphere Everyplace Server that quickly extend data and application to wireless computing devices and networks

### **MQSeries Everyplace**

- supports the messaging needs of lightweight devices, such as palm devices and laptop computers

### **DB2 Everyplace**

- brings the power of DB2 to mobile devices

### **WebSphere Portal Solutions**

- provides an open framework for creating custom portal sites

### **IBM Everyplace Wireless Gateway**

- extends applications to mobile devices over many different wireless and wireline networks

### **IBM Mobile Connect**

- a server-based data synchronisation and management solution for enterprises with mobile computing needs

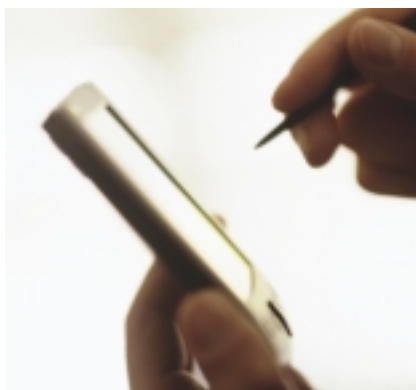
For more information [www.ibm.com/pvc](http://www.ibm.com/pvc)

**call 1300 880 150 for more information or to buy today**

## Manage data between enterprise servers and mobile devices

IBM Mobile Connect

WNT W2000



### IBM Mobile Connect provides functionality in specific areas:

- **Synchronisation of contacts, calendars, tasks, e-mail, and custom Data between mobile devices and Lotus Domino, Microsoft Exchange or ODBC-compliant database servers**
- **Implementation of software tools to aid management of devices used by mobile employees or customers**
- **Transfer of data between mobile devices and your network server using wired or wireless connections.**

IBM Mobile Connect is a server-based data synchronisation and management solution for enterprises. It allows you to manage and control information remotely, whether synchronising information between mobile devices and your network server or updating software applications running on handheld devices. By integrating mobile computing into your corporate infrastructure, your users can have access to the most current information, from virtually anywhere at any time, yet security and data protection is maintained.

For more information [www.ibm.com/pvc/products/mobile\\_connect](http://www.ibm.com/pvc/products/mobile_connect)

## Extend applications to wireless devices

IBM Everyplace Wireless Gateway for Multiplatforms

AIX SUN



The IBM Everyplace Wireless Gateway for Multiplatforms V2.1 is a distributed, highly scalable, multi-purpose UNIX communications platform. It supports security-rich data access by both Wireless Application Protocol (WAP) and non-WAP clients over a wide range of international wireless network technologies, local area networks (LANs) and wide area networks (WANs). The multipurpose design of Everyplace Wireless Gateway enables it to be configured to support a variety of communications modes, including: WAP Gateway with support for multiple bearer networks, short messaging service (SMS) and push proxy gateway (PPG), and remote access gateway providing TCP/IP connectivity.

### IBM Everyplace Wireless Gateway for Multiplatforms V2.1:

- Delivers e-business applications to mobile users over wireless and wired networks
- Provides cost-effective network access to mobile users
- Integrates diverse wireless networks using a single industry-standard interface
- Improves network response times and reduces data overload with data compression and header reduction
- Maintains or restores dial-up connections automatically to transmit data efficiently

### Everyplace Wireless Gateway components include:

**Everyplace Wireless Gatekeeper**—provides a Java technology-based administrator console to the Everyplace Wireless Gateway and to wireless resources.

**Everyplace Wireless Client**—software runs locally on mobile devices and provides a full function interface to communicate with Everyplace Wireless Gateway.

For more information [www.ibm.com/pvc/products/wireless\\_gateway](http://www.ibm.com/pvc/products/wireless_gateway)

## *Make the transition to e-business simple*

**IBM Small Business Suite****LNx**

- **Domino Application Server for messaging and collaboration capabilities**
- **DB2 Universal Database allows users to access and manage any amount of data, including text, image, audio and video**
- **WebSphere Application Server is a function-rich IBM HTTP server (powered by Apache Web server) that supports JavaServer Pages (JSP), servlet applications, and JavaBeans technology**
- **IBM Suites Installer, a Java-based tool, makes it easy to manage installation, configuration and deployment of components and non-IBM applications to one or more server and client computers in a business' network.**

The Small Business Suite provides award-winning products you need to run a growing business. Designed for small and medium businesses with up to 100 users, the Small Business Suite is an ideal, integrated solution that covers all your critical business functions and processes, such as e-mail, building and maintaining a dynamic Web site, storing all types of business data, running business applications and other business processes performed daily to customers, suppliers and prospects. The Small Business Suite offers advanced communication services needed for fast, flexible access to the Internet.

For more information [www.ibm.com/software/linux/sbs](http://www.ibm.com/software/linux/sbs)

**call 1300 880 150 for more information or to buy today**



## *How do I start? IBM Start Now Solutions*

IBM Start Now Solutions have been especially designed for medium-size businesses that wish to implement business solutions quickly and effectively. They address the key opportunities and challenges of IT Directors, and integrate a combination of best of breed software products and services to allow immediate implementation and rapid financial returns.

- **Build a strong e-business infrastructure foundation**
- **Streamline your business**
- **Transform your IT into a cost-cutting centre for your company**

### **How much does it cost?**

Attractive entry prices are available for each offering, combining software and services for a typical entry-level installation.

Call **132 426** and ask for Start Now.

### **Start Now Business Integration - Cut your integration costs.**

Integration is the key IT challenge for companies of all sizes. "Many IT enterprise systems such as CRM, supply chain management, ERP are not connected" (IDC). Integration is also the first step toward leveraging the Web and implementing a portal strategy. Includes: WebSphere MQSeries, and Implementation services.

### **Start Now Leveraging the Web - Increase the ROI of your Web investment.**

e-business is more than having a static Web site that displays information about your company and products. Demand more from your Web site: enable dynamic content, add program logic to your Web site in a scalable and secure way, integrate with your back end applications, join your sales and inventory systems, and align your IT to your business. Includes: WebSphere Application Server Advanced Single Server Edition; WebSphere Studio Application Developer and Implementation Services.

### **Start Now e-commerce - Expand your business with a lower cost sales channel.**

Buy and sell over the Internet: Allow your customers to browse catalogues on your site, fill electronic shopping carts, make secure purchases in their own language and currency. Enable advanced relationship marketing and customer service, analysis on statistics generated by customers, support of B2B and B2C e-commerce, etc. includes: WebSphere Commerce Professional Entry Edition Integrated e-commerce Solution; WebSphere Commerce Studio Professional Developer Edition and Implementation services.

### **Start Now Content Management - Cut your paper handling costs, improve your customer service.**

What if you could instantly answer your customer questions by accessing their statements online? This all-in-one solution enables you to store, index and archive your customer information, order details, payable records, inventory levels, legal files, microfiche, video and other data into a centralised electronic content repository, with easy user search and retrieval. Supports a wide range of media devices. Includes: IBM Content Manager Entry Bundle; Implementation services.

### **Start Now Business Intelligence - Know your customers, better manage your business.**

Businesses generate an ever-increasing amount of data such as customers, product sales, inventory and other data. However, this data is locked away in many applications and formats where it cannot be accessed for analysis. This integrated data warehouse offering enables you to extract, transform and query your business data in order to gain an unprecedented level of knowledge about your market and customers' behaviour. Includes: DB2 Warehouse Manager; DB2 Universal Database; Query tool: Brio or Business Object and Implementation services.

### **Start Now Team Collaboration - Cut your communication/travel costs.**

This offering brings the instant messaging capabilities to the enterprise by adding security (including Firewall support and encrypted chat), customer online discussions from your company Web site, Web-based teamrooms to share and organise projects, portal integration and a wealth of other features. Network Magazine declared Lotus Sametime "Product of the year" in 2001! Includes: Sametime; QuickPlace and Implementation services.

### **Start Now Storage Management - Cut your storage management costs.**

Data is your company's most precious asset. Protect your data with a comprehensive data backup & storage management solution that protects you from hardware failures and other incidents including site disasters. Includes comprehensive centralised management from the Web, capability to minimise the amount of transferred data, broad support of storage devices/operating systems/applications (database, email, ERP, application servers), automated archival of inactive data, and policy-based automation of all functions for a "set it and forget it" type of implementation. Includes: Tivoli Storage Manager and Implementation services.