

Software



CATALOGUE
Australia 2002

Your complete line of solutions for Windows, Windows NT, UNIX, Linux and OS/2



WebSphere. software

The IBM WebSphere software platform for e-business is a family of products and offerings built on open standards. Together, they provide the middleware and development tools that e-business requires covering portals, business integration and web application server.

visit ibm.com/software/au/catalogue **today**

Download other sections of the
IBM Software Catalogue from
ibm.com/software/au/catalogue



DB2 Data Management
Software

Lotus software

Tivoli software

Other IBM Software
& Solutions

IBM Global Financing

IBM Global Financing offers a wide range of flexible financing options that can help you acquire IBM and associated Business Partner software, hardware and services. Software financing is one of the fastest growing segments of the IT financing market for the following reasons:

1. Match cost to benefits

The costs associated with software acquisitions are heaviest at the front end, while benefits do not fully accrue until the project is implemented. When the project is financed and structured according to your business requirements, costs and benefits can be aligned more closely.

2. Bring investments forward

Using your cash flow rather than your capital allows you to invest now for business advantage and conserve your capital for higher yielding core business investments.

3. Total Cost of Ownership

Organisations that engage a financing partner for the total solution are more likely to achieve faster return on investment and greater long-term economies.

As the world's largest information technology financier, IBM Global Financing offers customers in more than 40 countries leasing and financing solutions for hardware, software and services acquired from IBM and other vendors. Talk to us today to see how we can help you reap the above rewards.

**Call 132 426 and ask for
IBM Global Financing**

Visit ibm.com/financing/au

Finance IT with IBM Global Financing

Cross-platform compatibility

Now, in just a single glance, you can discover which software runs on which platforms. Simply refer to the alphanumeric codes.

AIX	= AIX*
DOS	= DOS
HP-UX	= HP-UNIX**
LNx	= Linux**
MAC	= Macintosh**
MAC X	= Macintosh X**
NET	= NetWare**
NUMA-Q	= NUMA-Q*
OS2	= OS/2* OS/2 Warp* OS/2 Warp Server
SCO	= SCO
SUN	= Sun Solaris**
WMe	= Windows** Millennium Edition
WNT	= Windows NT**
W2000	= Windows 2000
W31	= Windows 3.1 and higher
W3X	= All Windows 3x software
W95	= Windows 95
W98	= Windows 98
W9X	= All Windows 9x software
UNIX	= UNIX**

Download other sections of the
IBM Software Catalogue from
ibm.com/software/au/catalogue



Everything you need - fast!

Free delivery

You pay no delivery fees on most products in this catalogue for standard deliveries. It means more money back into your business.

Backed by IBM

Every IBM product in this catalogue is backed by an IBM Limited Warranty. See the IBM Limited Warranty for full details and limitations. Non-IBM products are provided on an 'as is' basis, but may be covered by the appropriate manufacturer's warranty.

Charge it!

You can easily charge your purchase to the personal or corporate card of your choice: American Express, MasterCard or Visa.

Questions? We're always ready to help.

Our Software Sales Specialists are just a phone call away with the latest product information, pre-sales advice and order placement assistance. Just **call 1300 880 150** with any questions you may have about our products and services. We'll help you select and configure the right solutions for your needs!

Volume licencing

IBM offers substantial discounts for volume licencing on selected products. IBM's volume licencing program includes 24x7 telephone support for those mission critical installations, and ongoing software updates for the duration of your maintenance contract. Call one of our skilled Software Volume Licencing Specialists on **1300 880 150**.

Electronic Software Download

IBM offers immediate access to selected software via ESD - Electronic Software Download. Make your selection from our wide array of products and choose the ESD product option to obtain an immediate licence and download of software code.

It's easy to order with IBM

Phone

Call 1300 880 150 (Monday-Friday 8am-8pm) and you'll be connected to **ibm.com** where you can choose to be connected to an IBM Software Specialist.

ShopIBM on the Web

ibm.com/shop/au

ShopIBM is the fast, easy, secure way to order online from IBM. Find the product you're looking for and just add it to your cart. It's that easy! You can shop online 24 hours a day (your order will be processed Monday to Friday between the hours of 8am-8pm). We accept all major credit cards.

Local IBM Representative

Your local IBM Sales team will continue to support you with any IBM product you select from this catalogue.

For the sales representative nearest you,

call 1300 880 150.

Your IBM Business Partner

You may find it convenient to order your catalogue products through your IBM Business Partner. Their knowledge of your organisation and its current computing environment may help you quickly select and install the best IBM products for your needs.

Passport Advantage

Passport Advantage is IBM's comprehensive software licensing and software maintenance program that saves organisations money at every stage of software acquisition and use, everywhere in the world. Passport Advantage is the most flexible and cost-effective way for organisations to reap the benefits of volume pricing for new software, new releases of the latest technology, and technical support to keep businesses up and running. It can help lower acquisition and administrative costs, facilitate migration to new platforms, boost productivity and increase profits.

For more information visit:

ibm.com/software/passportadvantage

Or call 132 426 and ask for Passport Advantage.

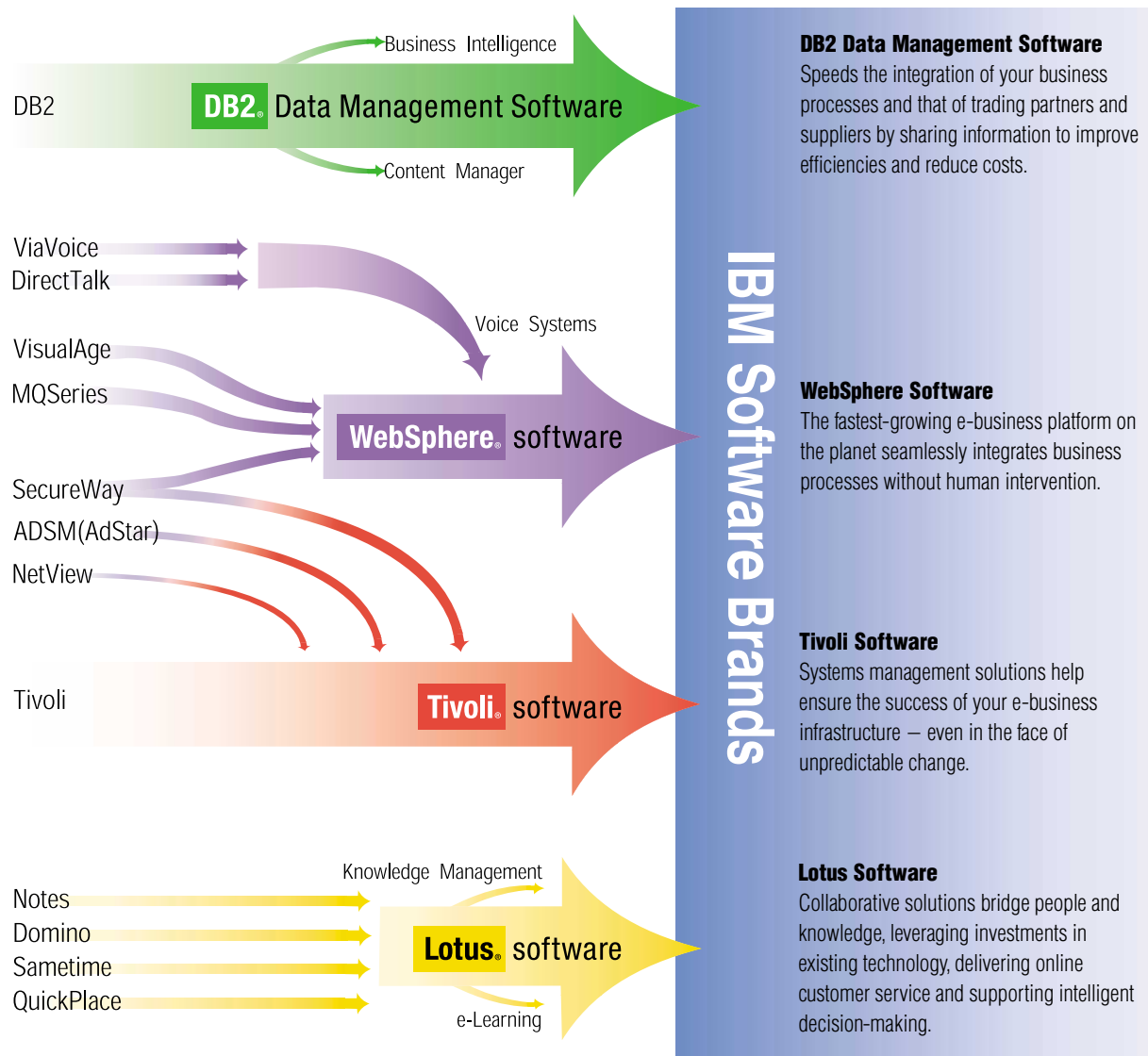
Meet the demands of dynamic e-business with IBM software.

e-business made the move from simple Web publishing to B2C and B2B transaction processing. From integrating your systems and applications with the Web to extending them across your value chain. Where do we go from here?

Dynamic e-business. As the next step in the evolution of e-business, dynamic e-business is about flexibility. Heightened connectivity. Adapting to changes in the marketplace quickly. Efficiently. Without a huge investment of money, time or resources.

IBM is working with other industry-leading companies to establish the open standards required to create dynamic e-business. And implementing these standards in our software products so that we can provide you with the solutions you need to benefit from dynamic e-business integration.

With IBM software and dynamic e-business, you can quickly adapt your systems to keep pace with an ever-changing business environment. Create more flexible business models. Maximise the value of business processes. And drive your profitability.



call **1300 880 150** for more information or to buy **today**

A comprehensive guide to the IBM software your business needs to grow.

To get greater efficiencies from your business, there's no need to scrap your current software systems, you can simply build on what you have. Especially when you're talking e-business; software is the foundation of an e-business infrastructure.

Your systems will help you gain a competitive advantage, containing customer and operational data that is priceless and growing exponentially. In a world of constant change, the ability to achieve competitive advantage, and keep it, is directly related to the flexibility of the underlying infrastructure.

IBM has completed thousands of customer engagements, working with companies such as ASX, St George Bank, Qantas and Telstra. More importantly, we've taken what we've learned in those engagements and used it to create a roadmap and a portfolio of middleware software, servers and services that can be combined to help your business.

This catalogue, developed especially for the Australian market, covers our entire spectrum of software including our four key software divisions: DB2, Lotus, Tivoli and WebSphere. If you want your business to grow, you'll find your software solution right here.

DB2 and Informix to manage and leverage data.

The IBM Data Management Software and Informix portfolio provides an open, scalable, industry standard platform across NT, Windows, UNIX, Linux, OS/390 and more. Ranging from high performance, extendable database engines powering your business application, to Business Intelligence solutions leveraging your priceless data and information, and Content Management solutions for management, storage and integration of unstructured data-like documents, audio, video, images and much more.

IBM Data Management delivers unique deployment flexibility with unparalleled scalability and availability.

Lotus for leveraging know-how.

By bridging the knowledge gaps in your business, you can establish the right teams, adapt to change and outpace the competition. Lotus software allows suppliers, partners, customers and employees share company information with three integrated solutions: Messaging and Collaboration, Knowledge Management and IBM MindSpan Solutions.

Lotus offers a leading portfolio of modular and standards-based software that easily integrates with other applications and operating platforms. Its distinctive solutions can help optimise your company's business transactions and the human interactions that support them.

Tivoli for managing complexity.

Tivoli software from IBM enables an IT organisation to reduce the total cost of ownership and improve the service levels of their IT infrastructure. Tivoli software helps traditional enterprises and e-businesses worldwide manage security, storage, performance and availability, and configuration and operations.

Tivoli software is a global leader in systems management software, in fact, 96% of Fortune 500 companies use Tivoli products and services to efficiently manage their enterprises.

WebSphere for integrated infrastructure.

IBM WebSphere is the broadest, best-integrated family of middleware in the industry. Combining application serving and integration technologies, complete customer relationship management, supply chain management, B2B and e-commerce services, WebSphere encompasses a full range of products designed to maximise your business performance.

WebSphere software gives you the tools to create a compelling Web experience for users plus enhance e-business performance. Organised into product groupings that match your specific needs, IBM WebSphere-based solutions provide your company with the flexibility to quickly transform into an adaptable, fast-growing and integrated business that can compete effectively on the Web.

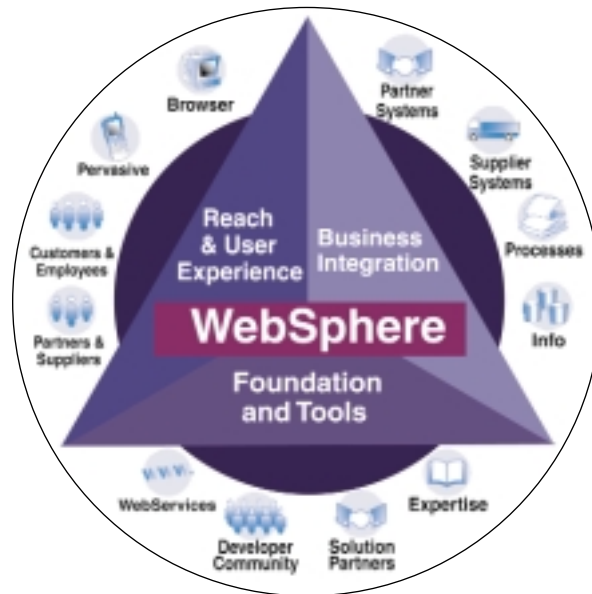
All your software needs in the one place.

You'll find all your IBM software solutions in this catalogue. For more information or to buy, simply call 1300 880 150 or visit ibm.com/software/au/catalogue

visit ibm.com/software/au/catalogue today

Infrastructure software for dynamic e-business

WebSphere Software Platform Overview



The IBM WebSphere software platform for e-business is a family of products and offerings built on open standards. Together, they provide the middleware and development tools that e-business requires.

WebSphere software fundamentally focus on:

- Building, connecting, and managing applications
- Providing access to information across a spectrum of users, devices and customisation options
- Integrating and automating business processes.

These three areas of functionality yield three broad classes of software:

Foundation and Tools for building run-and-deploy applications.

WebSphere Application Servers and WebSphere MQ messaging form a solid foundation for the platform. The base of the WebSphere 'pyramid' also consists of: application development tools like the WebSphere Studio and VisualAge families that are state-of-the-art, integrated and scalable, along with content management tools to keep your Web-based information up-to-the-minute. The foundation and tools assure scalability, speed and performance for any level of e-business demand, enable you to shorten costly development cycles, reuse your existing systems, build and use Web services and capitalise on your developers' skills.

Reach and User Experience for enhancing customer loyalty by personalising Web-based content and making it accessible to any device.

With WebSphere, you can build portals that enable users, partners and employees to readily find what they need in a highly interactive and personal way. You can provide wireless access to your systems to reach new markets with WebSphere's pervasive, voice and translation offerings. You can conduct e-commerce to reach a global market quickly and cost effectively. And you have performance and personalisation abilities to ensure that users don't have to wait or search for relevant information. Products in this dimension include WebSphere Portal family, Transcoding Publisher, Translation Server, Edge Server and the WebSphere Commerce family.

Business Integration for integrating business processes internally and with business partners.

WebSphere offerings such as WebSphere Business Integrator make it easy for companies to implement applications and business processes, including supply chain management and integration of existing processes with the Web. You can run the business the way you want: innovating brand new processes dynamically, connecting at will to your suppliers and customers as individuals. With WebSphere's Business Integration offerings, you can slash cycle time and costs for a rapid ROI.

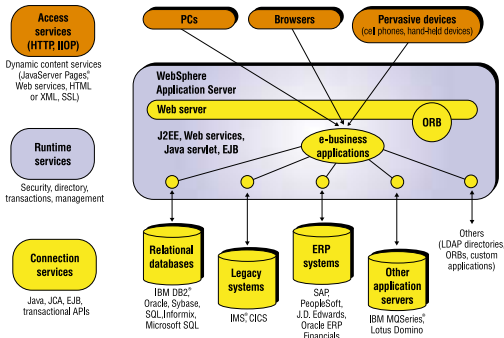
For more information ibm.com/websphere

call 1300 880 150 for more information or to buy today

Powerful foundation for flexible deployment of e-business applications

WebSphere Application Server, Advanced Edition

WNT W2000 LNX AIX HP-UX SUN



- **Integrated key Web services open standards support**
- **Full J2EE certification and rich enterprise Java open-standards implementation**
- **Unparalleled connectivity via J2EE Connector Architecture implementation**
- **Extensive performance, scaling, security and control for advanced e-business applications.**

WebSphere Application Server Version 4.0

(WebSphere AS V4), Advanced Edition is a comprehensive, Java technology-based Web application server aimed at professional Java technology developers who require J2EE and Web services functionality for dynamic e-business applications. It is available in three specialised configurations which offer businesses the flexibility to respond to the changing marketplace without migrating to a different technology base.

Advanced Edition

This full configuration provides strong integration to databases, message-oriented middleware and legacy systems and applications, along with clustering support. It appeals to businesses that need to build highly transactional, manageable, available and scalable applications that offer distributed security and remote administration.

Advanced Single Server Edition

This configuration provides the same core J2EE and Web services programming model as the full configuration with simplified administration. It appeals to departments, medium businesses and pilot applications which require a lower cost, fast to get running option that does not require the failure bypass, workload distribution or remote administration associated with multi-server management.

Advanced Developer Edition

This configuration is functionally equivalent to the Advanced Single Server Edition configuration with licensing and pricing terms to meet the needs of individual developers who are looking for a friendly and powerful unit testing environment, especially one that is seamlessly integrated with IBM's tooling. WebSphere AS V4, Advanced Developer Edition's license agreement excludes production usage. This configuration can be used for internal evaluation and for the development, demonstration and testing of applications only. Applications developed with this configuration can be deployed with the Advanced Single Server Edition.

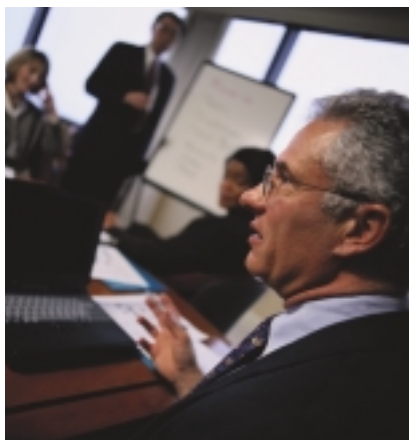
	Advanced Single Server Edition Advanced Developer Edition	Advanced Edition (the full configuration)
Full J2EE 1.2 compliance with some J2EE 1.3 support	X	X
Web services support		
Connection management and pooling	X	X
XML parsing	X	X
Expanded database support	X	X
Apache-based Web server	X	X
Browser-based administration of XML files	X	X
Firewall support	X	X
Java technology (such as EJB, MJS, servlet)	X	X
Lotus Domino interoperability	X	X
WebSphere tools integration	X	X
Integration with WebSphere offerings	X	X
Integration with Enterprise Services		X
Directory services		X
Application-level workload management		X
Clustering and cloning for higher scale and fault tolerance		X
Additional caching for improved transaction Performance		X
Distributed security		X
Full support for remote administration		X

For more information
ibm.com/software/info1/websphere/index.jsp?tab=products/appserv

Extend WebSphere Application Server with Enterprise Services

WebSphere Application Server, Enterprise Edition

WNT W2000 LNX
AIX HP-UX SUN



WebSphere Application Server V4.1 Enterprise Edition (WebSphere AS V4.1 EE) builds on the capabilities of WebSphere AS V4.0 Advanced Edition (AE) to meet the sophisticated needs of enterprise-class customers. Its principal elements are:

WebSphere AS V4.0 AE: offers integrated support for Web services open standards, full J2EE 1.2.1 compatibility and powerful interoperability between Web services and J2EE technology.

WebSphere Enterprise Services: plugs into WebSphere AS V4.0 AE to extend its capabilities with:

- Business rule beans
- Message beans and Java Message Services (JMS) listener
- Internationalisation service
- Shared work areas
- Bidirectional CORBA connectivity
- C++ CORBA software development kit
- ActiveX bridge

TXSeries: supports and simplifies transactional connections across diverse and complex networks.

MQSeries: supports the JMS listener Enterprise Service, enables communications between WebSphere AS V4.1 EE applications and integrates with other MQSeries-based applications.

WebSphere AS V4.1 EE Development Runtime is available for purchase separately.

For more information
ibm.com/software/info1/websphere/index.jsp?tab=products/appserv_enterprise

Raises the bar for enterprise Web metrics

WebSphere Site Analyser

WNT W2000
LNX AIX SUN

WebSphere Site Analyser V4.0 is a comprehensive Web site visitor analysis solution that includes:

- **Distributed cross-platform and scalable solutions for detailed content and usage analysis of Web site activities**
- **Web-based user interface and JSP/EJBs architecture**
- **Rich set of data capture and reporting capabilities for most leading Web servers and WAS applications**
- **DB2 for scalable analysis out of the box**
- **Oracle support**
- **Published database schema, useful for advanced data mining and OLAP reporting systems**
- **Near real-time and log-based data collection and reporting.**

WebSphere Site Analyser V4.0 is a comprehensive Web analysis solution offering robust, accurate, and detailed analysis of your enterprise Web site activities. It helps your organisation make facts-based decisions on all Web initiatives from content design to marketing advertisement effectiveness.

WebSphere Site Analyser V4.0 helps ensure successful e-Business operations by providing a detailed view of what is occurring on your Web site(s). It captures, stores, measures, reports and charts Web site visitor metrics, trends, preferences and traffic; site content and structure; site usage analysis; proxy server analysis; personalisation metrics and e-commerce analysis. This provides accurate and detailed analysis of your Web initiatives and campaigns.

WebSphere Site Analyser is an IBM e-Business WebSphere Foundation Extension. WebSphere Site Analyser V4.0 offers unmatched platform and language support, is Java certified, and J2EE compliant. It comes with its own DB2 UDB database for a fast, easy, scalable installation, and now also includes Oracle support.

For more information ibm.com/software/webservers/siteanalyzer/

Build personalised sites easily

WebSphere Personalisation
for Multiplatforms

WNT W2000 SUN
LNX AIX HP-UX

- Provides an easy-to-use interface for defining how a Web site is personalised
- Defines campaigns of targeted Web page content and personalised e-mail
- Delivers targeted content based on visitor's actions on the Web site
- Works with WebSphere Site Analyser V4 to report on business rule effectiveness
- Integrates with content management systems
- Supports business rules and collaborative filtering personalisation.

WebSphere Personalisation simplifies the development of personalised sites by adding the following capabilities to WebSphere Application Server:

- Personalisation workspace – allows non-technical users, such as business managers, to define a site's personalisation strategy through an easy-to-use browser-based interface
- Campaign management – allows business managers to define a set of actions made up of Web page content and targeted e-mail to accomplish a business objective
- Implicit profiling – develops profiles of site visitors based on the content they view and their actions on the site
- Reporting on campaign and business rule effectiveness via WebSphere Site Analyser
- Simplified integration with LDAP, IBM Enterprise Information Portal and Interwoven TeamSite
- Rules engine – executes business rules which determine what content is displayed to each site visitor
- Recommendation engine – collaborative filtering product for making content and product recommendations. Up to 25,000 profiles are licensed to be stored. Capacity can be expanded in increments of 250,000 profiles with WebSphere Collaborative Profiles
- Resource engine – a set of Java APIs which simplifies integration with multiple sources of profiles and content.

For more information ibm.com/software/webservers/personalization/

Enabling 'Application Aware' networks

WebSphere Edge Server
for Multiplatforms

WNT LNX AIX SUN

WebSphere Edge Server Version 2.0 for Multiplatforms (Edge Server) distributes application processing to the edge of the network under centralised administrative and application control.

It opens significant new opportunities for e-business, service providers, and independent software vendors with unparalleled application scalability and user response times. With its tight integration in the WebSphere software family, Edge Server is a world-class vehicle for deploying selected components into the network. Significant new functions and benefits of Version 2 include:

- **Application Offload** shifts the burden of serving composed, personalised, dynamic content from the application server to Edge Servers placed at network edges by offloading back-end servers and peering links.
- **Content Distribution** deploys published Web content to caches and re-hosting servers throughout the network.
- **Enhanced Caching** improves response time by offloading back-end servers and peering links as a forward, reverse or transparent proxy.
- **Enhanced Load Balancing** via new features such as Network Address, Translation (NAT), Kernel-level Content-Based Routing (CBR) support and the WebSphere Edge Server Consultant for Cisco CSS switches.
- **Security** is centralised using Tivoli SecureWay Policy Director Plug-in's authorisation engine to ensure only authorised users can access cached and non-cached Web resources.
- **Transactional Quality of Service** allocates computing and network resources according to a transaction's business value. It allows customers to prioritise and secure traffic based on user classes and groups; optimising resource utilisation and improving network scalability.

For a complete edge of network solution, WebSphere Edge Server Version 2.0 also includes:

WebSphere Application Server, Advanced Edition Single Server Version 4.0 (restricted usage license).

Tivoli Policy Director V3.8 with 100 user licenses.

For more information ibm.com/software/webservers/edgeserver/

Deliver a personalised and collaborative B2C / B2B / B2E portal experience

WebSphere Portal Family

WNT W2000 AIX LNX SUN



The **IBM WebSphere Portal family** of products delivers a unified IBM portal strategy, bringing together the software components you need to help you securely deliver tailored content and collaborative portal experience to employees, (B2E) suppliers (B2B) and customers (B2C). Portal technology. Content personalisation capabilities. Collaboration capabilities. Web site analysis. Content management capabilities. All designed to help you maximise your Web site effectiveness and your return on investment.

Whether you want to implement a simple portal, enhance its capabilities in stages, or immediately exploit the full breadth of IBM portal capabilities, the three simple packaged options of WebSphere Portal are designed to meet and grow with your unique portal needs.

WebSphere Portal Enable offering: get a portal up and running – quickly and easily

A flexible, scalable horizontal portal framework providing you with the foundation for implementing highly personalised portals.

- Integrate enterprise applications, syndicated content, Web sites, e-mail, and more through a wide variety of Portlets
- Dynamically personalise portal content using business rules and collaborative filtering
- Leverage a common set of services for connectivity, integration, administration, and presentation that is required across portal environments
- Customise and extend the portal framework with the portlet API to meet unique portal requirements.

WebSphere Portal Extend offering: extend access to action

Includes all the Enable capabilities and adds integrated collaboration, extended search and Web site analysis.

- Provide work environments equipped with collaboration tools such as discussion areas, document libraries, group calendars, task and milestone tracking, online people awareness and instant messaging
- Allow searches across multiple repositories including relational databases, Lotus Notes and Domino databases, popular Web search engines, and text or HTML documents
- Capture, store, measure, report and chart Web site visitor trends and preferences on all Web initiatives.

WebSphere Portal Experience offering: a comprehensive portal offering

Includes all the Extend capabilities and adds advanced collaboration, enterprise content management and enhanced security features.

- Effective online collaboration through e-meetings, application sharing and whiteboarding as well as the ability to take rooms offline
- Data storage for a broad spectrum of digital information including facsimiles, images, PC files, XML, and multimedia
- Content infrastructure for applications including call centres, high-volume claims processing and accounts payable
- Folder management and document workflow
- Sample Java applications and advanced development tools
- Security policy management tools for e-business and distributed applications.

For more information
ibm.com/software/info1/websphere/solutions/offerings/portalfamily.jsp

Integrated, open, role-based tools to boost developer productivity

WebSphere Studio Product Family

WNT WXP W2000 WMe W98 W95 LNX



WebSphere Studio product family brings together unparalleled integration across development tools and can bridge the gap between distributed teams. This comprehensive integrated set of tools for developing dynamic e-business applications can provide everything a developer needs from simple Web design to the most advanced Java development functions. Whatever your development skill-set or need is, the IBM WebSphere Studio product family can provide you with the tools you need to help build your applications better and faster than before.

WebSphere Studio Homepage Builder is the entry-level Web authoring and design tool. It contains everything you need to design, build and publish professional-quality, lively Web pages. You don't need HTML knowledge or programming skills. As a beginner or an expert you can incorporate the latest Web technology into your Web pages easily and intuitively.

Its key features include:

- Over 2,000 built-in templates
- Over 5,000 images, animations, sounds and Java applets in a built-in library
- Interactive audio tutorial
- Support for latest Web technology with intuitive user interface
- Advanced scripting support to create client-side dynamic applications with Visual Basic or JavaScript
- WebArt Designer - to create your own graphic titles, logos, buttons, and photo frames with professional looking touches
- AnimatedGif Designer - to create life-like animation from still pictures and graphics as well as animated banners
- Integrated easy-to-use visual layout tool
- WebVideo Studio to easily add AVI and MPEG video clips from digital camera to your site
- Support for pervasive computing devices
- Accessibility check for visual/hearing impaired persons.

WebSphere Studio Professional Edition is for professional Web developers in small teams getting started with dynamic WebSphere-based applications. It takes the rich page editing functions in WebSphere Studio Homepage Builder and adds:

- Support for JavaServer Page 1.1 and Servlet 2.2
- A team environment to check in/check out files
- Advanced wizards to create database applications
- Rich deployment to WebSphere Application Server V4.0, Advanced Single Server Ed., including J2EE support
- Integration with VisualAge for Java V4.0
- Web services creation and consumption wizards

WebSphere Studio Site Developer Advanced, the follow-on technology for WebSphere Studio Advanced, is a comprehensive Web development tool that brings together all aspects of Web application into a common interface. It allows you to create and deploy Web content, provides for more efficient site design and management, and makes Web application design, construction and deployment easy.

Its features include:

- Integrated version control system including adaptors for Rational Clearcase LT OEM and Concurrent Versions System (CVS)
- Visual layout of dynamic pages, an advanced-function HTML and JSP editor
- Built-in WebSphere and Apache Tomcat test environments with JSP Debugger
- Rich media tools for visual applet creation, gif animation and image creation
- XML and Web services development environments
- Database support including a SQL wizard, SQL query builder and a Relational Schema Centre
- An integrated Java development environment.

WebSphere Studio Application Developer is the next generation product for VisualAge for Java based on the WebSphere Studio Workbench, an open-tool platform and integration technology. Building on the many popular functions of VisualAge for Java and WebSphere Studio, WebSphere Studio Application Developer delivers an advanced and robust J2EE development environment that provides excellent support for building, testing, and deploying both server-side (Servlets, JavaBean, EJBs) and client-side (HTML, JSPs) components. WebSphere Studio Application Developer is for professional Java developers who require integrated Web, JSP, XML and Web services support.

Other key features include:

- Help create, build, test, publish and discover Web services based applications, supporting UDDI, SOAP and XML
- Generate XML documents from DTDs, schemas
- Integrate with best-of-breed plug-ins
- Enable collaborative development with role-based perspectives
- Optimise application performance
- Enable end-to-end local and remote testing
- Increase productivity and create high-quality applications using wizards, code generators and best practices.

WebSphere Studio Application Developer, Integration Edition provides powerful graphical tools for the creation and customisation of application adaptors, reducing the risk, complexity and cost involved, and eliminating the need for extensive coding. It includes all of the capabilities of WebSphere Studio Application Developer as well as support for the Enterprise services offered by WebSphere Application Server Enterprise Edition. Its key features include:

- Support for JDK 1.3, configurable runtime, incremental compilation, scrapbook, dynamic debugging and Java text editor
- Wizards and visual tools for creating adaptors, Web services, JavaBeans, EJBs, and JavaServer Pages
- A sophisticated Adapter Builder to integrate Enterprise resources with J2EE applications based on the J2EE Connector Architecture (JCA) open standard
- A range of adaptors for popular packaged applications.

For more information ibm.com/software/ad/adstudio

Component-based development

WebSphere Business Components

WNT W2000 LNX
AIX SUN



- **Based on open standards technology**
- **Delivers a proven framework, as well as prebuilt and tested components, tools and services**
- **Enables true "plug and play" componentry**
- **Supports integration with IBM Web Services offerings**
- **Leverages skills and standards, improved time to market and broad market acceptance.**

WebSphere Business Components (WSBC) eases solution deployment by providing the tools, components and deployment support you need to develop Enterprise JavaBeans (EJB) applications and component-based solutions. WSBC family delivers the following:

WSBC Studio – provides a starter set of components, tools and supporting services needed to create and deploy additional components and build industry applications

Text Analyser BC – enables rapid runtime categorisation textual input

Order Capture BC – captures information on sales orders, pricing, handles credit checks and determines product availability

WSBC Composer – a development workbench for composing prebuilt, ready-to-use components (including transaction and infrastructure Java based) to build enterprise e-business applications.

For more information ibm.com/software/webservers/components

Traditional and Web Services application and development tools

VisualAge Enterprise Suite

WNT W2000



This suite of application development tools allows you to quickly move to e-business and simplify your application development software purchasing and administration. It can:

- **Optimise I/T expenditures by helping eliminate shelfware and multiple tools**
- **Help reduce administration costs associated with tracking software use**
- **Gain productivity across the enterprise by taking advantage of the latest advances in application development tools**
- **Increase developer flexibility with a suite of tools that allows developers to use the right tool for traditional or e-business based projects**
- **Increase reusability and control of software with standardised development methodologies and tools.**

IBM VisualAge Enterprise Suite is a bundle of Windows and Windows NT development products that offers an end-to-end set of tools available for one single price. Each licensed developer in your organisation is entitled to use any of the products in the suite.

- WebSphere Studio Application Developer Integration Edition for Windows V4.1
- VisualAge Generator Developer V4.5
- VisualAge COBOL for Windows NT V3
- VisualAge PL/I V2.1
- Versata Studio Client V5.5 (a product of Versata, Inc., an IBM Business Partner)

For more information ibm.com/software/ad/vaes

A rich environment for object-oriented application development

VisualAge C++ Professional for AIX

AIX

- **Incredible flexibility with the choice of a traditional, makefile-based C++ compiler or the highly-productive IBM incremental C++ compiler – both support 32-bit and 64-bit optimisation**
- **Support for the latest ANSI 98 C++ standards in both compilers, including a complete ANSI Standard Template Library**
- **New Performance Analysis tool to help analyse, understand, and tune your C and C++ applications for improved performance.**

VisualAge C++ Professional for AIX, V5.0 offers the flexibility of a set of C++ compilers supported by a suite of tools designed to offer a rich environment for object-oriented application development. It also provides a rich set of Open Class Libraries and a set of visual tools including the Visual Builder and Data Access Builder.

For more information ibm.com/software/ad/vacpp

Build robust e-business systems

VisualAge Generator

WNT W2000 AIX HP-UX SUN OS2


- **Simplifies development of MQSeries business integration solutions**
- **Provides a rapid application development environment for developing scalable WebSphere based e-business applications.**

VisualAge Generator, which is fully integrated with VisualAge for Java, offers versatile solutions with scalable, multiplatform exploitation across networked systems. It is designed to simplify and shield the complexities of all supported topologies. Developers with minimal Java expertise can implement end-to-end Java e-business systems and Java developers without mainframe expertise can develop systems for traditional, transactional platforms.

For more information ibm.com/software/ad/visgen

call 1300 880 150 for more information or to buy today

Complete e-commerce solutions for your Web sites

WebSphere Commerce Professional and Business Editions

WNT W2000 AIX SUN



WebSphere Commerce Version 5.4 is an industry leading sell-side e-commerce solution designed for both Business-to-Business (B2B) and Business-to-Consumer (B2C) environments. This flexible and adaptable application consists of a set of integrated software components that enables enterprises to build and manage personalised and individualised e-commerce sites and to create robust next generation e-commerce environments that extend beyond a storefront.

WebSphere Commerce delivers award-winning customer value:

- Support to both B2C and B2B implementations
- Reliable, secure, scalable e-commerce platform ensuring flawless execution in even the most rigorous conditions
- Highly customisable and flexible development environment based on open architecture and industry standards
- Easy-to-use interfaces to create dynamic marketing campaigns, target market segments, and personalised product promotions
- Business intelligence to track and analyse customer behavior and purchase patterns
- Catalogue content management features to build, manage and deploy sophisticated online catalogues
- Sophisticated multicultural enablement and support to sell in the global market
- Built-in payments supporting Offline, SET, CyberCash, VisaNet, and BankServ ACH
- Live Help/Customer Care Collaboration utilising Lotus Sametime technology to provide real-time instant messaging, application sharing and browser re-direction

- Anytime, anywhere access with e-Commerce support
- Speed and depth of integration to internal and external systems as well as business processes
- Powerful capabilities to strengthen business relationships and manage business interactions
- Cost savings and rapid ROI.

WebSphere Commerce is a complete, out-of-the-box, integrated solution. The infrastructure is built on key IBM technology products that are already integrated and shipped in the package. These include WebSphere Application Server, IBM HTTP Server, and DB2 Universal Database, providing a reliable, secure, and scalable foundation.

Two editions of WebSphere Commerce V5.4 are available. The Professional Edition meets the needs of most B2C businesses while the Business Edition is the appropriate platform for most B2B and Business-to-Business-to-Consumer environments - selling to consumers via distributors or resellers.

WebSphere Commerce Professional Edition

Professional Edition (WCPE) is a market leading commerce server with the breadth of capabilities to meet the needs of any retail online storefront initiative - from entry level and up to the very sophisticated sites with personalised marketing, up-selling, cross-selling, and digital media assets.

Enhancements over previous versions of WebSphere Commerce Suite include:

- Availability-to-Promise inventory management - for backorder processing
- Returns and refunds - enables returns processing
- Catalogue management interface and editor tool
- Tools Framework - enables quick implementation of a full-featured user interface with a common look and feel
- WebSphere Commerce Recommendation Engine - recommends items or content to site visitors based on their explicit ratings and behavior such as clickstream data and products purchased
- Business intelligence - helps merchants evaluate the success of campaigns, initiatives, e-marketing spots, sales and orders
- Tax integration kit - provides an interface to integrate tax solutions of independent software vendors
- Store development and server administration tools
- Security enhancements
- WebSphere Payment Manager enhancements - performance improvements, support for purchasing card and BankServACH cassette.

WebSphere Commerce Business Edition

Business Edition (WCBE) offers additional advantages for businesses that require easy to implement online commerce and collaboration with their traditional and new customers and partners, through online trading relationship management and standards based integration. Business Edition also provides functionality that is specific to Business-to-Business commerce. Its key features include:

- Live Help/Customer Care Collaboration - utilises Lotus Sametime technology to provide real-time instant messaging, application sharing and browser re-direction
- Financial - provides billing, invoicing and credit management
- Granular access control - allows setting up of a hierarchy of secure access to features and functions
- Buy-side purchasing function - includes purchase order support
- Business relationship management - provides intuitive browser-based business user interfaces to easily configure and modify business policies and contracts
- Customer entitlement and contract-based commerce: enables transactions to be based on business policies, contracts and requisition lists
- Request for Quotation (RFQ): allows buyers to customise RFQ - modify, duplicate, cancel, close or submit
- Messaging: provides the capability to connect to external procurement systems and marketplaces
- Online buyer/seller collaboration: provides a contract draft and proposal discussion template based on Lotus QuickPlace
- Advanced user and organisational management: provides support for hierarchical organisation structures and users by explicit assignment or implicit predefined grouping criteria.

WebSphere Commerce Professional Entry Edition

WebSphere Commerce Professional Entry Edition is a license-restricted version of WCPE providing an entry-level commerce solution for small and medium sized businesses. It is the same product as WCPE except for:

- Maximum of one processor, one store, and one server for production
- Sametime not included
- Support for Windows NT or Windows 2000, DB2 Universal Database Enterprise Edition, and IBM HTTP Server only.

WebSphere Commerce Studio Developer Editions

Get a quick start on developing your WebSphere Commerce Web site by using WebSphere Commerce Studio (WCStudio), Professional or Business Developer Edition, V5.4. These powerful design and development systems, based on WebSphere Studio include:

- WCPE in WCStudio, Professional Developer Edition, V5.4
- WCBE in WCStudio, Business Developer Edition, V5.4
- Tools and support for rules-based personalisation
- Tools for setting up auctions
- Product Advisor tools
- Tool for building and extending Enterprise JavaBeans (EJBs).

For more information ibm.com/software/webservers/commerce/

Improve e-commerce effectiveness

WebSphere Commerce
Analyser Advanced Edition

WNT W2000 AIX



- **Designed for and significantly extends the analytical capabilities of WebSphere Commerce Suite (WCS) Pro V5.1**
- **Includes DB2 Universal Database Enterprise Ed., DB2 Warehouse Manager, Intelligent Miner for Data, HTTP Server and DB2 OLAP Starter Kit**
- **Provides automated implementation - start working right from the box**
- **Allows easy-to-use data mining and custom report building**
- **Supports end-user Web analytic reporting via Brio.Inform or BusinessObjects Commerce Tracker.**

WebSphere Commerce Analyser Advanced Ed. (WCA/Adv) V1.1 is an analytical solution that enables WCS Pro V5.1 users to analyse information related to their customer's e-commerce activities. By integrating data mining, WCA/Adv combines complex data characterisations, relationships, and projections with visualisation tools that can be used to create additional insights.

For more information ibm.com/software/data/bi/wca

Optimise the wireless Web experience

WebSphere Transcoding
Publisher

WNT W2000
LNX AIX SUN



- **Dynamically extends Web content to various mobile devices including voice-only phone**
- **Supports Machine Language translation**
- **Streamlines content delivery**
- **Customises presentation for end-users.**

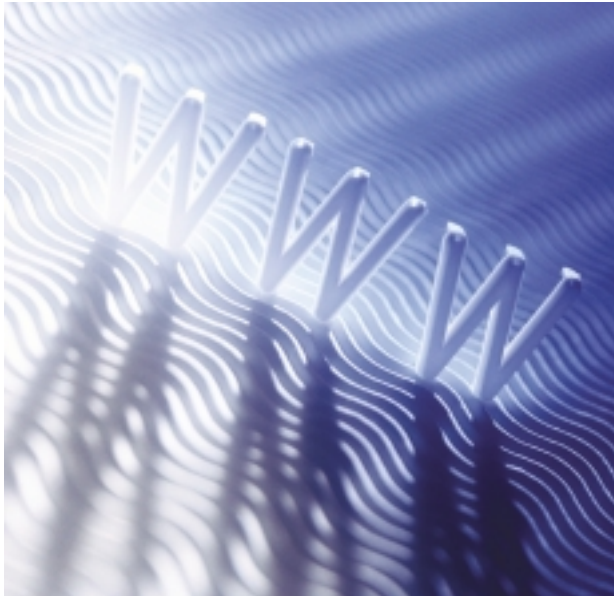
WebSphere Transcoding Publisher (WTP) is a server-side software that dynamically adapts, reformats, and filters data so that it is optimally formatted for pervasive computing. It minimises the need to generate and maintain multiple versions of Web content or applications to support different target devices and environments. WTP delivers a set of convenient plug-and-play content transformations along with the ability to deliver new transformations in response to new breeds of devices, emerging XML variants, and e-business trends. The flexible architecture keeps your business ahead of trends and helps ensure your data and applications continue to reach customers in the environments of the future.

For more information ibm.com/software/webservers/transcoding/

Quickly extend legacy applications to the Web

WebSphere Host Publisher

WNT W2000 AIX SUN



Designed for ease-of-use, WebSphere Host Publisher enables IT professionals familiar with existing applications to simply extend them to the Web. Create new composite applications that mine information from various sources without modifying your back-end systems. It also provides the high level of security you need for your Web-based environment. Host Publisher offers the scalability, flexibility and robustness of an industrial-grade Web platform coupled with tools that enable the reuse of previous work in the creation of new, sophisticated, host-linked e-business applications.

For more information ibm.com/software/webservers/hostpublisher/

- **Extends the reach of your mission-critical legacy applications without modification, to Web users and new WebSphere applications**
- **Supports applications written for 3270, 5250, Virtual Terminal, Java and JDBC-enabled Databases**
- **Extends legacy services as new web services**
- **J2EE compliant**
- **Delivers Enterprise JavaBean (EJB) support**
- **Provides a WebSphere Portal portlet extending legacy content as new enterprise portal content**

call 1300 880 150 for more information or to buy **today**

A single solution for all your host access needs

IBM Host Access Client Package**WNT W2000 W98 W95 LNX AIX HP-UX SUN OS2 NET**

- **One tool with all you need for host access – IBM Personal Communications, IBM WebSphere Host On-Demand and IBM Screen Customiser**
- **Access to applications and data residing on AS/400 (5250), S/390 (3270), and DEC/UNIX (VT***) hosts for traditional and Web users in SNA and intranet environments**
- **Thin client technology to distribute host access capability to remote users, as well as users in intranet and extranet environments**
- **The ability to create new graphical user interfaces (GUIs) to front-end host information with drag and drop technology – no programming is needed**
- **The IBM Host Access Client Package for iSeries Version 2.0 is the solution for all of your iSeries host connection needs. For those customers who need to access multiple backend host systems, the IBM Host Access Client Package for Multiplatforms Version 2.0 is a more appropriate solution.**

Migrate to the Web at your own pace

The three components of IBM Host Access Client Package allow you to manage your migration to Web technologies at your own pace. With one package, you can support your diverse user community and eliminate your need to work with multiple vendors.

IBM Personal Communications

IBM Personal Communications V5.5 for Windows is a market leader for traditional client access and connectivity. It is Windows 2000 Certified and includes support for Macro Conversion for use in Host On-Demand, Express Logon Function, Smart Card Support, and Associated 3270 Printer Support. With a full compliment of programming interfaces and the most options for connectivity, Personal Communications is the ideal tool for all environments.

WebSphere Host On-Demand

WebSphere Host On-Demand V6.0 gives you secure access to your host applications and data whenever and wherever you need it, using a simple Java-enabled Web browser. Just click on the hyperlink to launch the Host On-Demand Java applet that gives you secure, scalable and reliable access with S/390, AS/400 and DEC/UNIX emulation in a single package. Database On-Demand, a Java SQL query function is also provided. Users may access any number of host sessions and still use their browser for other tasks. Host On-Demand requires no client installation since it can be centrally deployed and administered.

IBM Screen Customiser

The drag-and-drop technology of IBM Screen Customiser V2.0.60 eliminates the need for programming. It is a cost-effective, quick solution that allows you to leverage investments in legacy applications. It automatically converts host screens into graphical presentations that are easily customisable without programming. It is based on innovative screen recognition technology, requiring no access to source code.

With the tools you can use today, you can start to build your e-business applications of the future.

For more information ibm.com/software/network/hostaccess

Open the door to protocol independent networking

IBM Communications Servers

WNT W2000 AIX OS2



The IBM Communications Server family offers a broad range of communications, connectivity and networking options that let you make application decisions based on business needs, not networking protocols. It brings you true networking – interconnecting people and applications – even when platforms and networking configurations are diverse. Several versions are available to support all of the most popular operating environments:

IBM Communications Server for Windows NT and Windows 2000 V6.1.1 offers proven, secure, enterprise-class support for e-business networks on a Windows platform. It connects users to enterprise host applications and data over diverse networks – whether SNA, TCP/IP, intranets, extranets or the Internet. It includes:

- Express Logon Function
- Extended TN3270E Capabilities
- Microsoft Windows 2000 Active Directory** Support
- SSL support, SLP service location and load balancing functions for TN Server

Communications Server for AIX, V6.1 has been enhanced to include support for the IBM AIX 5L Version 5.1 operating system, including support for the state-of-the art 32-bit and 64-bit Power kernels. The AIX 5L is the IBM strategic UNIX operating system for mission-critical, core business Applications.

Communications Server for AIX provides all-in-one communications services between workstations and host systems, as well as other workstations. Its capabilities include:

- A full-function SNA gateway
- The most Advanced Peer-to-Peer Networking system in the industry
- Support for many types of connections
- A rich set of application programming interfaces (APIs)
- Support for IBM's AIX 64-bit operating system

Communications Server for AIX opens the door wide to protocol- independent networking, with seamless support for workstations communicating across SNA and TCP/IP networks.

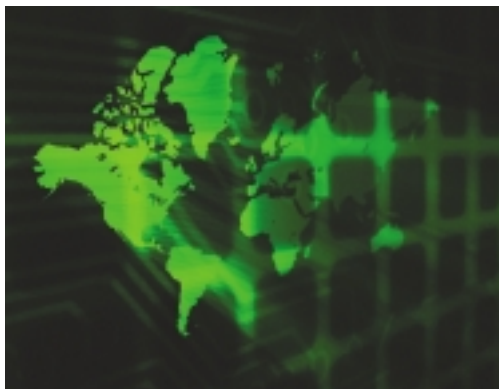
For more information ibm.com/software/network/commserver

call 1300 880 150 for more information or to buy today

Jumpstart your e-business

**WebSphere Host
Integration Solution**

**WNT W2000
AIX SUN**



WebSphere Host Integration Solution includes the latest levels of:

- **WebSphere Host On-Demand**
- **IBM Screen Customiser**
- **WebSphere Host Publisher**
- **WebSphere Application Server, Advanced Edition**
- **WebSphere Studio, Professional Edition**
- **IBM Personal Communications[†]**
- **IBM Communications Servers.**

Version 2.5 extends the WebSphere Application Server, Advanced Edition to both Registered and Concurrent Users providing customers with additional flexibility.

WebSphere Host Integration Solution provides the ability to support and effectively use intranets, extranets, and the Internet. In one total software offering it enables virtually every user to have access to your mission-critical business systems regardless of their platform or network environment.

This Web-to-host offering addresses the full e-business cycle, with industry-leading host access solutions and unmatched flexibility for any environment. Integrated into the WebSphere software platform is a comprehensive set of integrated e-business solutions that provides a total solution available at one simple price per user.

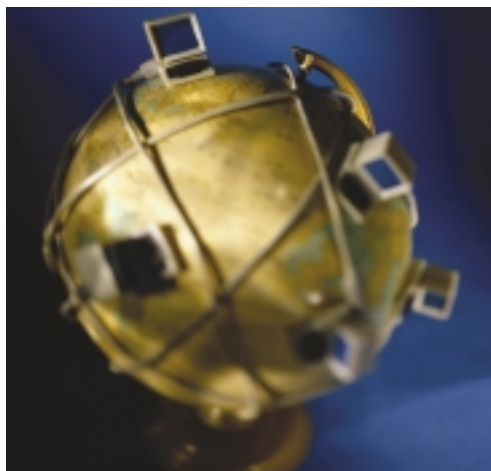
[†] Registered - Intranet User Only

For more information ibm.com/software/webservers/hostintegration/

Web access to your CICS applications

**CICS Transaction
Gateway**

**WNT W2000 W98 W95
AIX HP-UX SUN OS2**



IBM CICS Transaction Gateway is IBM's strategic connector for connection to CICS, supporting J2EE for connectivity between the IBM WebSphere software platform for e-business and IBM CICS applications. It:

- **Offers a comprehensive security-rich environment for optimal authentication and authorisation**
- **Allows you to choose application server programming models for deployment across most major execution platforms**
- **Delivers best-of-breed performance and scalability by using memory-based access to optimise connection to CICS applications**
- **Provides implementation of the J2EE Connector Architecture**
- **Is a well-proven, high-performing and robust connector.**

Today, conducting business intelligently means extending core business processes and applications to the Web to be able to offer the right products to your customers at the right time. You need to build easy-to-use, convenient applications to target self-service Internet consumers. And you must create applications that work for less technically knowledgeable users. You don't want to start from the ground up. You already have business-critical processes in place representing a substantial financial and technological investment. The challenge is to make existing business systems accessible in new ways.

IBM CICS* Transaction Gateway, Version 4 offers a superb solution. It allows you to integrate your Web application server with your back-end business application systems running on CICS servers. It provides simple, efficient and scalable connectivity for most applications running on CICS servers.

For more information ibm.com/software/ts/cics/

Enterprise application integration

WebSphere MQ

WNT WinXP W2000 LNX AIX HP-UX SUN



- **Award-winning software for integrating applications**
- **Companies can more rapidly and inexpensively deliver an integrated suite of applications**
- **Provides facilities to exchange information across the majority of commercially available systems**
- **Delivers a consistent, familiar interface across all operating systems; minimises need for retraining, and increases return on investment**
- **Ensures once daily delivery of important messages**

WebSphere MQ (formerly MQSeries), the core of the MQ family, provides application connectivity. It can be used alone or with other members of the family such as WebSphere MQ Integrator (for enterprise application integration), and MQSeries Workflow and IBM Crossworlds (for business process automation), to deliver an end-to-end business integration solution.

A major new release of WebSphere MQ, Version 5.3, delivers enhancements that simplify programming, harmonise features across platforms, and improve security and performance. They include:

- Comprehensive security options are provided by Secure Sockets Layer (SSL) support, the Internet standard for secure communications
- Extended Java Message Service (JMS) support
- Product flexibility is increased by the API crossing exit
- Performance and scalability are enhanced, both for the MQI (Message Queuing Interface) and for JMS (Java Message Service) with publish/subscribe users
- Support for Windows XP, and Linux on zSeries
- Enhanced functions allow easier system management of MQ clusters
- Other added features harmonise the zSeries and distributed platform products

For more information ibm.com/software/ts/mqseries

call 1300 880 150 for more information or to buy today

Reliable messaging for mobile users

WebSphere MQ Everyplace

WNT W2000 W98 WMe W95 LNX AIX HP-UX SUN



WebSphere MQ Everyplace (formerly MQSeries Everyplace) brings reliable assured communications into an unpredictable world by giving you the capability to:

- **Extend an MQ network to new platforms and devices**
- **Exploit the WebSphere MQ Integrator by routing transactions from stores and checkouts into the Integrator**
- **Get the benefits of assured once-only delivery, with superb security, over fragile and unmanaged communication networks**
- **Integrate a mobile workforce into key business processes by exploiting the latest devices and protocols**

- **Provide Internet users with safe access to the corporate messaging network**
- **Use WebSphere MQ Everyplace to provide 'earliest possible' delivery of key business data**
- **Reduce running costs by holding messages for batch delivery and using compression features to reduce transmission costs**

WebSphere MQ Everyplace, V2.0 extends the WebSphere MQ family, the infrastructure for connecting servers and mainframes in e-business solutions, to mobile platforms and devices, and retail systems. WebSphere MQ Everyplace complements the WebSphere MQ base product by providing robust messaging capability on small and mobile devices, as well as providing a direct link to WebSphere MQ Integrator - and enables e-Business messaging for the WebSphere Everyplace product set.

This release provides native support for C implementation on Windows PocketPC to extend the programming choice in the handheld market. It also supports point-to-point messaging via the Java Message Service (JMS), and extends Java programming to smaller devices that can run Java Micro Edition (J2ME).

For more information ibm.com/software/ts/mqseries/everyplace

Adapters to end platform incompatibility and simplify application integration

MQSeries Adapter Offering

WNT W2000 AIX HP-UX SUN

- **Based on XML Open Applications Group (OAG) standards**
- **Builds interfaces for applications with provision of the MQSeries Adapter Builder**
- **Provides runtime services for all adapters built using the Builder**
- **Reduces the risk and cost of managing point-to-point application integration**
- **Provides a safe, predictable migration path: from simple point-to-point integration, without the need for a transformation engine to complex integration with message brokers and workflow.**

The MQSeries Adapter Offering provides a framework and tools to build and run adapters that connect existing and new, prepackaged or custom-developed applications to each other via MQSeries messaging into the wider MQSeries messaging environment. With this product you can bring applications onstream faster and reduce the cost of application development and maintenance.

MQSeries Adapter Offering has two elements. MQSeries Adapter Builder offers a visual environment to generate C or Java adapters. MQSeries Adapter Kernel for Multiplatforms deploys and executes the adapters, and performs related functions such as message construction, tracing and interfacing with MQSeries and JMS.

For more information ibm.com/websphere/adapters

Manage information flow achieving business and application integration

WebSphere MQ Integrator

WNT W2000 AIX HP-UX SUN

WebSphere MQ Integrator, previously known as the IBM MQSeries Integrator, is a powerful information broker that uses enterprise-defined rules and intelligent routing to select and distribute information to the applications, databases and people who need it, across and between enterprises. The latest release, V2.1 offers:

- Tagged Message Support
- Support for industry standard messages (SWIFT, EDI)
- XML enhancements ("MRM2")
- Java environment for plug-in nodes
- Plug-in API extensions (input nodes)
- Visual Administration and Debugging tools
- National Language and additional platform support

WebSphere MQ Integrator's flexible, extensible, open and scalable architecture enables you to:

- Integrate applications – existing or new
- Transform, augment, apply rules to and route message based data between high performance systems
- Integrate business and application data using dynamic content and topic-based publish/subscribe
- Deploy, configure and manage application integration flows requiring multiple run-times
- Deliver loosely or tightly coupled solutions
- Add a multiplicity of custom extensions
- Simplify application integration at design, development, and maintenance stages, saving both time and effort.

For more information ibm.com/software/ts/mqseries/integrator

Achieve business integration

MQSeries Workflow

WNT W2000 AIX HP-UX SUN

IBM MQSeries Workflow enables a business to:

- **Increase its agility and so act - and react - in a timely way**
- **Deliver new services and products that leverage new and existing investments in infrastructure**
- **Make its processes visible by revealing what is actually happening**
- **Ensure processes are visible and usable by employees, customers, partners and suppliers.**

IBM MQSeries Workflow is the core of IBM's Business Process Management software. It defines and executes start-to-end business processes, lifting your organisation to new levels of business agility while leveraging existing IT and organisational infrastructures. MQSeries Workflow delivers the highly scalable, reliable and transactional environment demanded by mission-critical e-business solutions. MQSeries Workflow provides the competitive edge by aligning your process with your business objectives.

For more information ibm.com/software/mqseries/workflow

call 1300 880 150 for more information or to buy today

Connect to popular packaged software

WebSphere Adapters

WNT W2000 LNX
AIX SUN HP-UX



- **Integrates popular packaged software with new Web-based and existing WebSphere and MQSeries Applications**
- **Implements industry standards including J2EE Connector Architecture**
- **Provides integrated tooling to extend and customise adapters**
- **Reduces costs and time to market.**

WebSphere Adapters use open standards and integrated tooling to provide industry-leading support for Java technology-based application servers and message-based middleware. With J2EE Connector Architecture, WebSphere Adapters enable Java applications to reuse functions, data and business processes implemented in packaged application systems. When deployed in a server supporting the J2EE Connector Architecture, WebSphere Adapters allow you to use existing systems services, such as transaction management and security. Its standard J2EE connectors give you a single integration technology for both tightly and loosely coupled applications.

For more information ibm.com/websphere/adapters

End-to-end e-business process management

WebSphere Business Integrator

WNT W2000



WebSphere Business Integrator V2.1 is a full function, end-to-end e-business process management system. It provides a framework for creating and executing IT solutions that integrate business processes spanning diverse applications and enterprises and manages those processes and the underlying IT components as a single, complete, flexible solution. This comprehensive solution to business integration challenges combines:

- IBM's middleware platforms including WebSphere Application Server and Studio, the MQSeries family of products, WebSphere Personalisation, and IBM Tivoli Security Solutions
- Simplified installation and configuration process for the component parts
- Powerful, defined solution model that avoids the need for each customer to discover and solve all the difficult integration problems
- WebSphere Studio Business Integrator Extension V2.1, an integrated tools suite for solution development and deployment using process templates

WebSphere Business Integrator is available in both Entry and Enterprise Editions.

For more information ibm.com/software/webservers/tbtobintegrator/

Open the door to protocol independent networking

WebSphere Partner Agreement Manager

W2000 WNT AIX SUN



WebSphere Partner Agreement Manager

Is designed for organisations whose primary focus is business-to-business integration with one or more partners. Multiple partners can participate in shared business processes and manage every aspect of standards-based business-to-business (B2B) process collaboration by providing:

- Extensive channel support
- A comprehensive B2B platform for a variety of partner integration solutions
- Process-oriented solutions that define how companies collaborate using a shared process
- Comprehensive built-in features for communications, security, configuration, and process traceability
- Easy integration with a range of partners, using a variety of data exchange methods
- Strong integration capabilities, leveraging MQSeries
- Business-critical framework for guaranteed message delivery, maximum reliability, and scalability
- Includes a restricted license copy of DB2 UDB and a channel toolkit

Three optional products are available:

WebSphere Partner Agreement View

This offering enables third parties to use a Web browser to interact with WebSphere Partner Agreement Manager. It provides an interface between the WebSphere Partner Agreement Manager product and the Web applications developed by the licensee.

WebSphere Partner Agreement Connect

This restricted-use version of WebSphere Partner Agreement Manager fully integrates with the main hub. It allows trading partners of the hub operator to participate in the defined public processes via a direct program-to-program connection. WebSphere Partner Agreement Connect makes it easy to communicate and manage the flow of information and business processes among partners, from simple data exchange to process execution. Users may not build their own public processes or operate their own trading hub.

WebSphere Partner Agreement Channel Support

WebSphere Partner Agreement Manager supports an extensive range of industry-standard communications channels that facilitate the flow of information associated with business processes. Connectivity is provided using any of the following options:

- cXML (Ariba Commerce Services network)
- XML
- webPartner
- RosettaNet (includes Process Pak)

WebSphere Partner Agreement Manager can also be fully integrated with the WebSphere Business Integrator.

For more information ibm.com/software/webservers/pam

call 1300 880 150 for more information or to buy today

Unites and extends business processes

IBM CrossWorlds

WNT W2000 AIX SUN



- **Change how businesses run at the process level within and among enterprises to improve efficiencies, reduce cost and increase revenue potential**
- **Provide an unmatched array of integration services within a scalable, patented architecture that supports re-use of components**
- **Enable rapid implementation of projects to integrate common business processes across multiple CRM, ERP, Supply Chain or legacy applications**
- **Achieve a consistent and unified view of information across the enterprise, across disparate systems and applications – to aid in reporting, planning and business analysis**
- **Model and implement improved process design – to aid in reducing labor costs, eliminate manual processes**
- **Analyse business activity to improve operational efficiency.**

The IBM CrossWorlds process integration solution is an element of the WebSphere brand that serves a wide spectrum of companies' integration needs – both inside and outside the firewall. As part of WebSphere, the IBM CrossWorlds solution extends e-business infrastructure by providing business process modules or collaborations, comprehensive tools, application connectors, and an industrial-strength process broker, all of which enable companies to extract the most business value from their investments.

IBM CrossWorlds InterChange Server (ICS)

An industry-leading business integration server which is open, high-performing and scalable providing a centralised and common view of enterprise-wide data.

IBM CrossWorlds Toolset

An easy-to-use graphical development environment and toolset for rapid end-to-end development, deployment and maintenance of business objects and process.

IBM CrossWorlds Connectors

An extensive list of connectivity options providing out-of-the-box access to many popular packaged and legacy applications, databases, trading partners' systems, and even public information stores on the Web.

IBM CrossWorlds Collaborations

A rich set of predefined business process logic for easily extending and uniting processes. With IBM CrossWorlds, you can reduce your costs of managing IT, increase productivity of your existing systems and processes, and improve your responsiveness to customer demands, partner opportunities and competitive pressures with the least disruption to ongoing business. From linking applications or systems to integrating and automating business processes, IBM CrossWorlds can help you with your present and future integration challenges. Combined with the information connectivity and integration capabilities of IBM's market-leading WebSphere MQ family, IBM provides one of the most comprehensive business integration solutions in the market.

For more information ibm.com/websphere/crossworlds

Remove language barriers to global communications and e-commerce

WebSphere Translation Server

**WNT W2000
AIX LNX SUN**

- **Translates hundreds of words per second**
- **Provides superior parsing mechanism and deep lexical analysis using state-of-the-art machine translation techniques**
- **Effects quick, inexpensive, convenient “gist” text translation**
- **Interprets specific terms or phrases for a domain or context**
- **Supports WebSphere Application Server and various HTTP servers**
- **Integrates easily into multiple environments with attached e-mail servers and synchronous collaboration chat servers.**

Leverage your existing Web infrastructure to present content to your customers and users in their native languages, at a fraction of the cost of professional translation.

With WebSphere Translation Server, you can provide Web pages, e-mail messages, and chat conversations in multiple languages, real time. You can also add your specific terms and phrases to the lexicons used by the machine translation engines. Disbursed processing and off-loading of the translation task from the HTTP, application or Sametime servers can be achieved with WebSphere Translation Server running on a dedicated server.

For more information ibm.com/software/voice/enterprise/ep_8.html

e-business finds its voice

WebSphere Voice Server

W2000 AIX



- **Voice-enable your applications to wireline and wireless devices using VoiceXML and Java standards**
- **Leverage your investment in Internet-skilled resources, telephony and Web infrastructure.**

WebSphere Voice Server provides speech recognition and speech synthesis (Text-To-Speech or TTS) engines, voice application development tools and telephony platform connections to develop and deploy applications for use over telephones. New features of V2.0 include:

- Concatenative TTS engine synthesising more natural sounding speech
- New support for Intel Dialogic telephony platform, in addition to existing support for Cisco and WebSphere Voice Response for AIX, with IBM DirectTalk Technology
- Enhanced language support, including US English, UK English, French, German, Italian, Spanish, Japanese, and Chinese (Simplified and Traditional)
- Complimentary copies of WebSphere Voice Toolkit, WebSphere Voice Server Software Developers Kit, WebSphere Application Server, Advanced Developer Ed.V4.0 and WebSphere Studio V4.0 Entry Ed.

For more information ibm.com/software/voice/enterprise/ep_1.html

Interactive voice response and advanced speech recognition

WebSphere Voice Response with DirectTalk Technology & IBM Message Centre

WNT W2000 AIX



WebSphere Voice Response with Direct Talk Technology

WebSphere Voice Response is a versatile, powerful voice processing platform specialising in Interactive Voice Response (IVR) that takes information retrieval far beyond traditional "Press 1 to Continue" menus. By integrating WebSphere Voice Response with WebSphere Voice Server, applications can now combine keypad entry with voice recognition.

Key features of WebSphere Voice Response include:

- Answer and screen a large number of calls simultaneously and promptly, reducing caller wait time
- Scalable from 2 to 480 ports depending on platform
- Support speech recognition technology, including WebSphere Voice Server
- Provide dynamic, real-time information on demand through advanced Text-to-Speech technologies, including WebSphere Voice Server
- Support VoiceXML and Java for service creation
- Support multiple connectivity and signaling environments such as T1, E1, (ISDN, CAS, SS7) and VoIP.

IBM Message Centre

IBM Message Centre is a unified messaging solution that manages employee and customer voice mail, e-mail and fax messages – for access anytime, anywhere, and from any device.

For more information ibm.com/software/speech/enterprise/ep_2.html

Bypass the keyboard...talk to your computer

IBM ViaVoice for Windows and ViaVoice for Macintosh

W2000 W98 WMe MAC X

- **Dictate and edit text, speak commands for your applications and the Web using your natural voice**
- **Headset microphone included**
- **Legal and medical vocabularies available.**

ViaVoice for Windows, Release 9 is a suite of continuous speech products designed to appeal to every level of user – from beginners to seasoned voice recognition 'power users'. Each of the four ViaVoice for Windows Release 9 editions – Pro USB, Advanced, Standard and Personal – offers innovative features designed to make setup, dictation and voice navigation easy and efficient:

- Key Control can ensure your voice commands are not mistaken for dictation
- Large Font Option can make creating your Personal Voice model more enjoyable
- Quick Response Dictation can allow ViaVoice to respond promptly as you create text with your voice

- Product Code Modifications Enhancements can ensure ViaVoice formatting and navigation commands work more quickly and efficiently
- Direct Dictation with formatting and editing into Microsoft Word products, including Word 2002.

ViaVoice for Mac OS X Ed. is a native MAC OS X application with the following key features:

- Rebuilt from the ground up for Mac OS X
- "Aqua" interface/look-and-feel
- Fast enrollment
- Dictation into many text-based Mac applications

For more information ibm.com/software/voice