

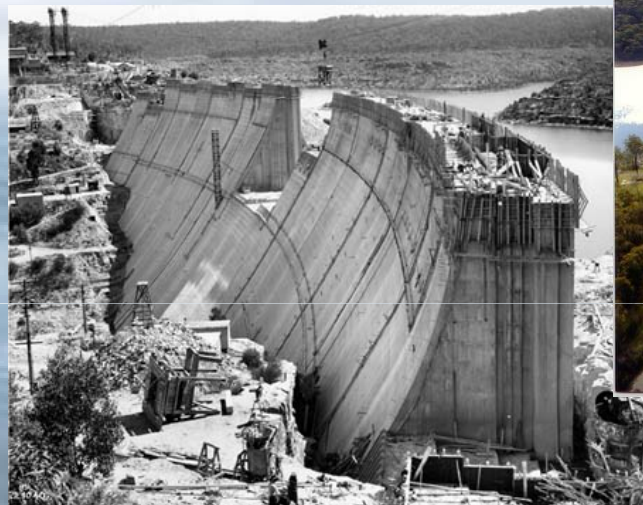


# Cognos 8.3 Budget Control Project

**Presenters: Gihan Khalil &  
Pawan Kumar**

# Agenda

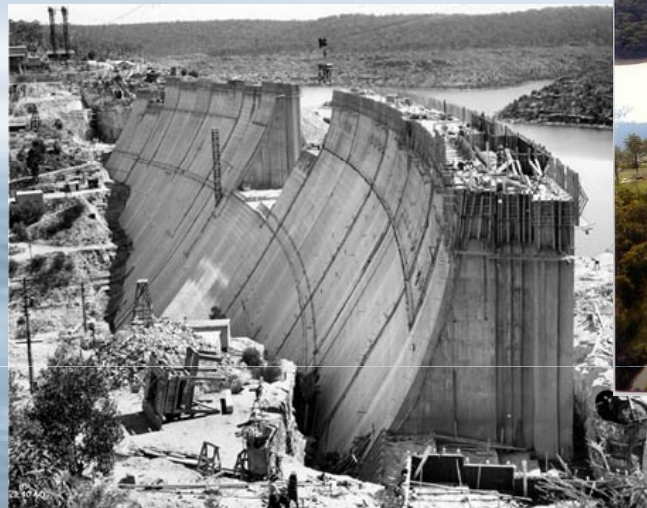
- Introduction – Relationship with Cognos partner
- Objectives
- Why Now
- Cognos 7.3 High level Design
- What's New
- Development Streams
- Database Platform Cognos 8.3 High Level Architecture
- BI Reports & EP Model - Demo
- Key Achievements
- Change Management
- Security
- User Expectations
- Q&A



Woronora Dam

# Introduction

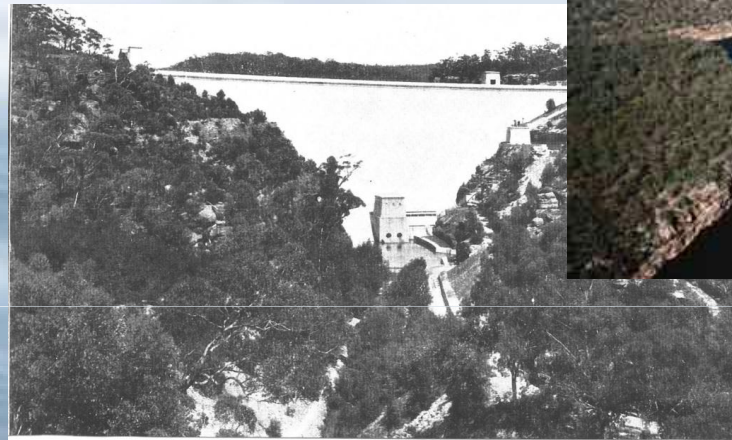
- SCA – what do we do?
- The size of the organisations
- Background information
- The scale of the reporting and EP Model needs



Woronora Dam

# Our relationship with Pelion

- Partnership around all the strategic planning project
- Services in Planning and requirement gathering exercise.
- EP Planning consultant design and develop Cognos EP 8.3
- Environment Health check.



Avon Dam

# Project Objectives

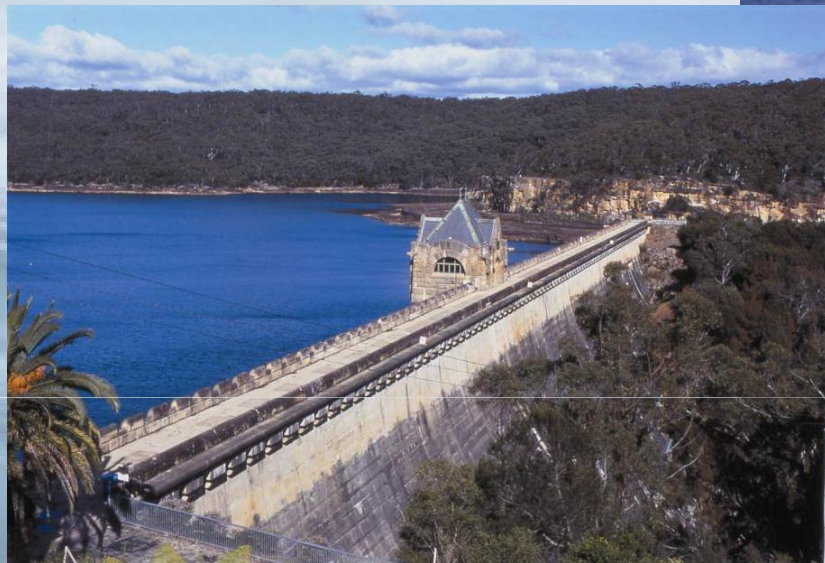
- Simplicity.
- Automation.
- Finance Data Mart.
- Cognos 8.3 BI reports.
- Secure environment and single sign on.
- Track History and free up disk space.
- Increase user self service
- Finance team perform less technical process and more financial management
- Cognos CSIM and Best Practice



Lake Medlow Dam

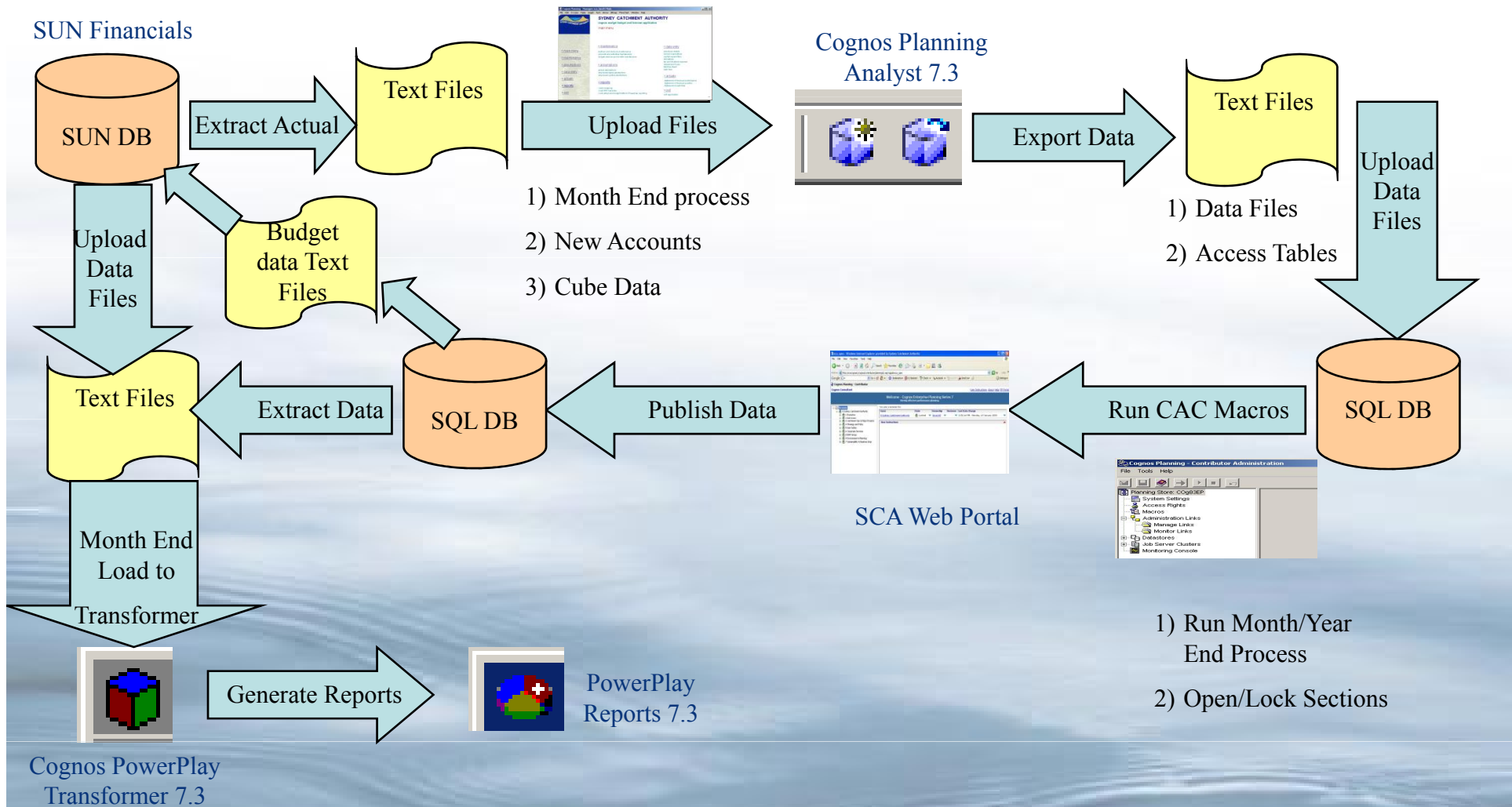
# Why Now?

- SCA have used Cognos Planning 7 since 2003
- Changes to original design
- Lengthy planning and reporting process
- Reporting issues with reconciling to source.
- Manual refresh of Cognos cubes



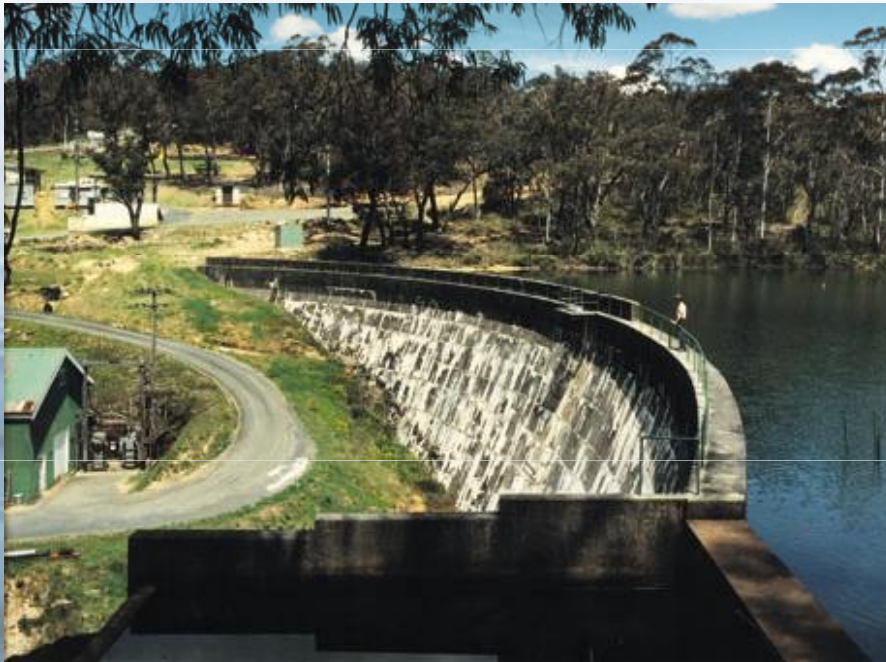
Cataract Dam

# Cognos 7.3 High level Design



# What's New in COGNOS EP 8.3

- The ability to budget and seasonalise staff
- Budget by multiple dimensions.
- Overnight updates.
- Textual information.
- Automated data extracts.



Cascade Dam



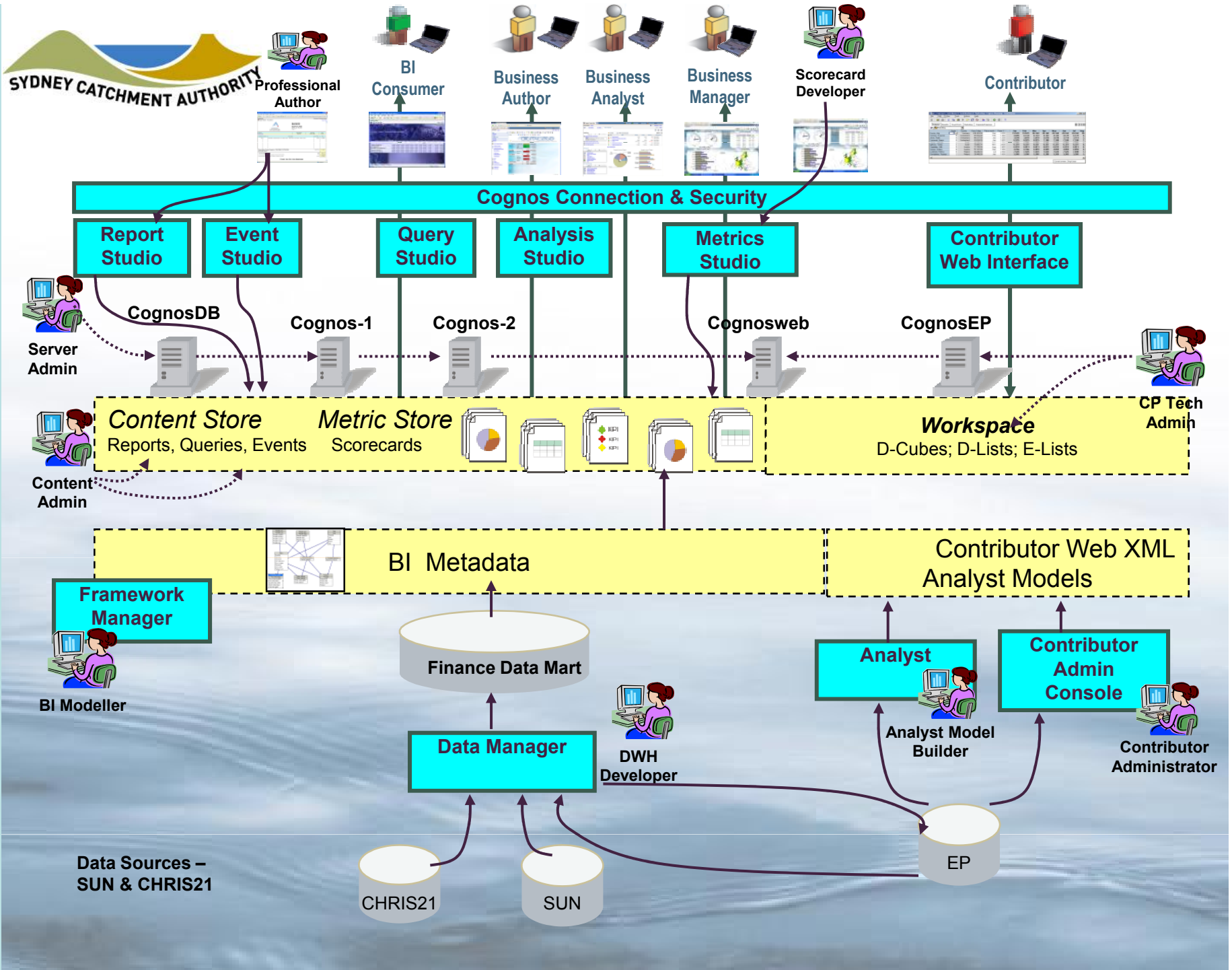
# Development Streams

- Set-up the technical environments.
- Data Source profiling.
- Finance Data Mart
- Build data extracts from relevant source systems.



Warragamba Dam

# Cognos 8.3 BI Project High Level Architecture



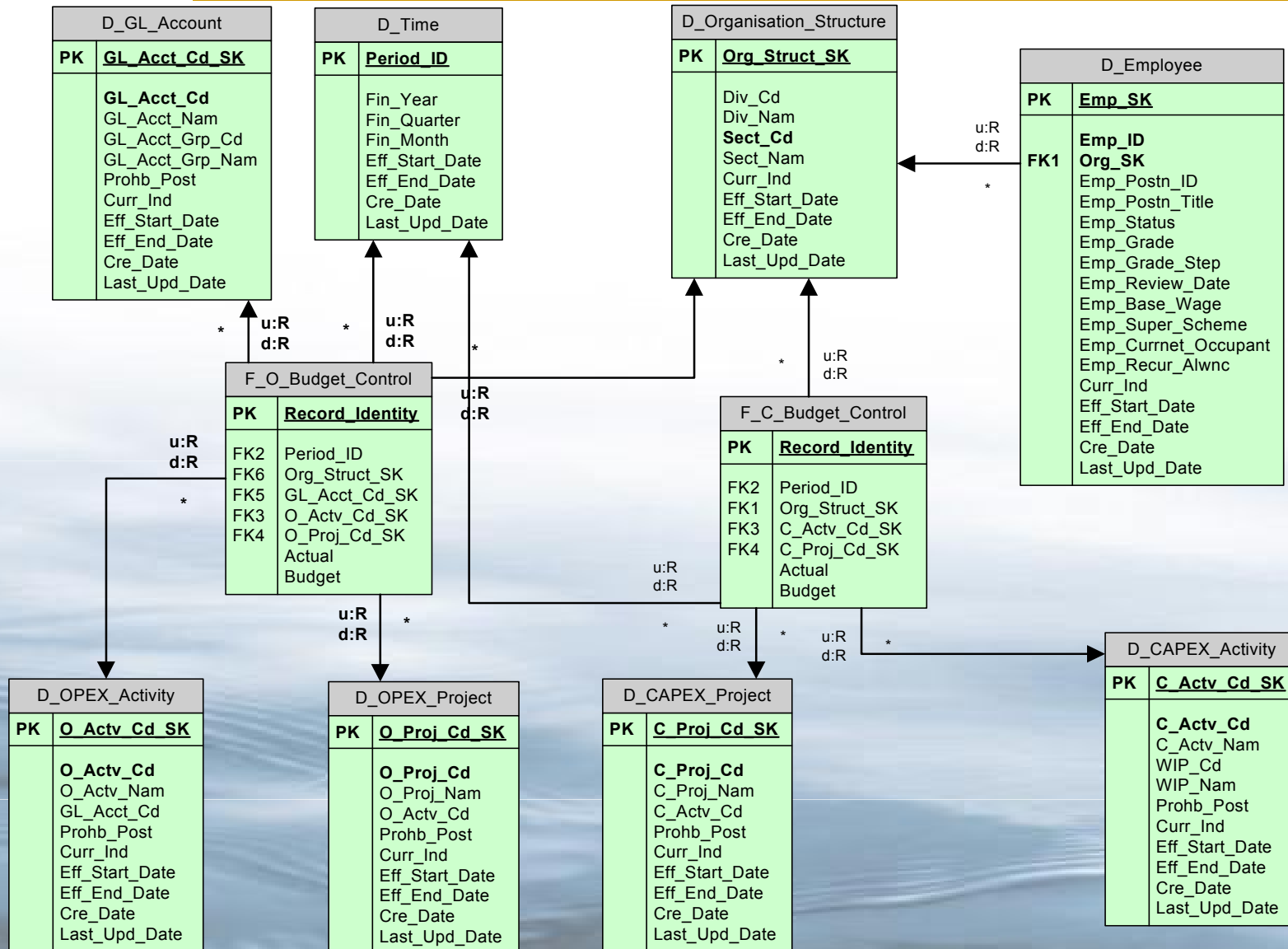
# BI - DEMO

## ➤ COGNOS BI 8.3 Reports

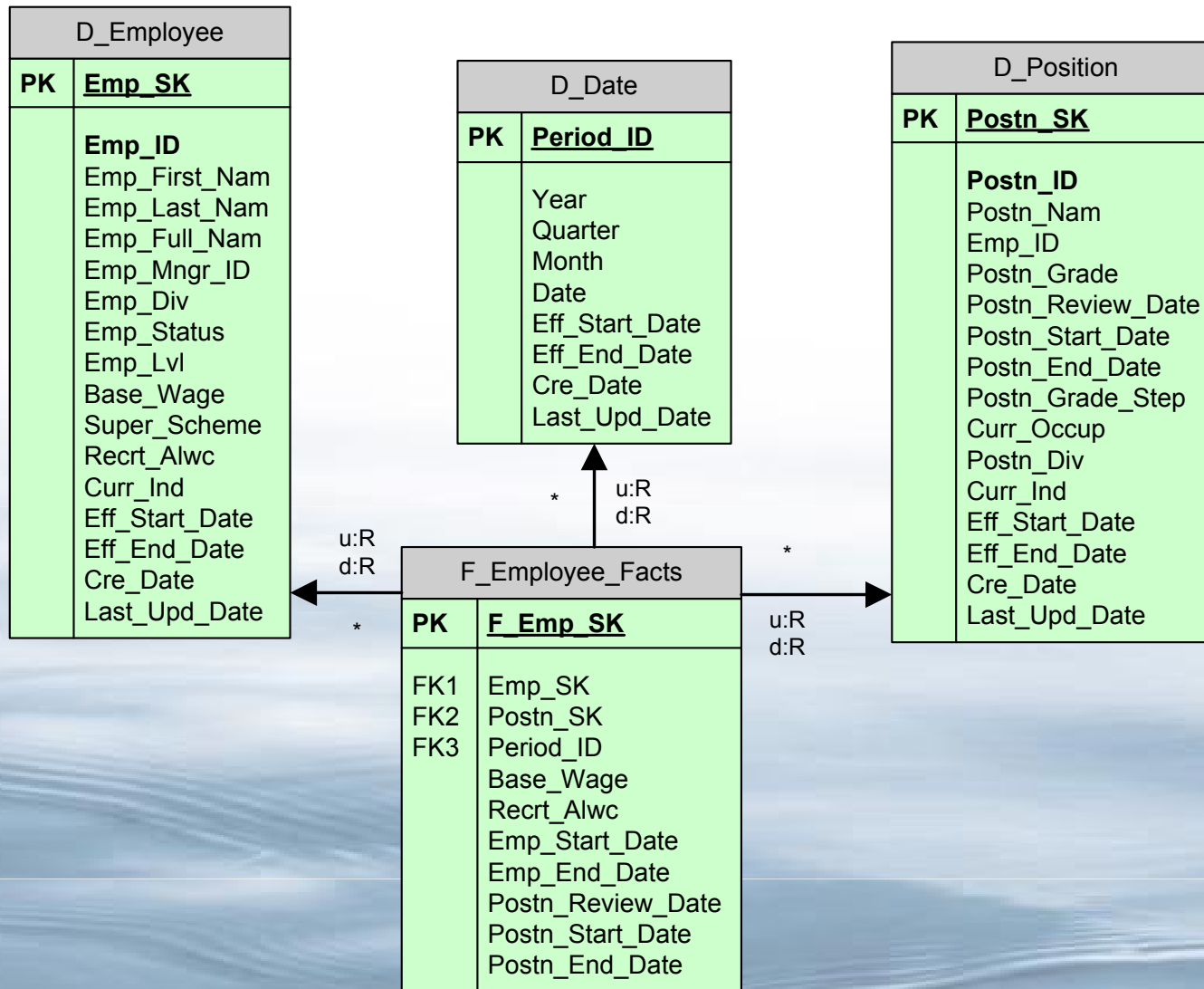


**Fitzroy Falls Dam**

# Finance Data Mart – Module from SUN



# Finance Data Mart – Module from HR



# BI DEMO

The screenshot displays the Cognos 8 user interface. At the top left, the logo "COGNOS® 8" is visible. At the top right, the user name "Gihan Khalil" and a "Log Off" link are present. The main content area is divided into two columns. The left column contains two sections: "My Content" with links for "My home" (house icon) and "Cognos content" (folder icon), and "Administration" with a link for "Administer Cognos content" (wrench and screwdriver icon). The right column contains a "My Actions" section with several options: "Plan and forecast" (person icon), "Manage my metrics" (traffic light icon), "Query my data" (pencil icon), "Analyze my business" (cube icon), "Create professional reports" (ruler icon), and "Manage my events" (clock icon). At the bottom left, there is a checkbox labeled "Show this page in the future" which is checked. At the bottom right, there is a "Quick Tour" button. The footer contains copyright information: "Copyright (C) 2007 Cognos Incorporated. All rights reserved. Cognos and the Cognos logo are trademarks of Cognos Incorporated." and the Cognos logo with the tagline "THE NEXT LEVEL OF PERFORMANCE™".

**COGNOS® 8** | Gihan Khalil | [Log Off](#)

### My Content

- My home
- Cognos content

### Administration

- Administer Cognos content

### My Actions

- Plan and forecast
- Manage my metrics
- Query my data
- Analyze my business
- Create professional reports
- Manage my events

Show this page in the future

[Quick Tour](#)

Copyright (C) 2007 Cognos Incorporated. All rights reserved.  
Cognos and the Cognos logo are trademarks of Cognos Incorporated.

**COGNOS**  
THE NEXT LEVEL OF PERFORMANCE™

# BI DEMO – Query Studio

Query Studio - QS - CAPEX Actual vs Budget

Gihan Khalil Log Off



## CAPEX Actual vs Budget - by Div by Sect by Activity

Fin Year: 2008, 2009 AND Division: 6 - Corporate Services

WIP: Ascending order

Division: 6 - Corporate Services

Section: 61 - Corporate Services Management

		2009		2008		Summary	
		CAPEX Actual	CAPEX Budget	CAPEX Actual	CAPEX Budget	CAPEX Actual	CAPEX Budget
W010 - Metropolitan Water Plan	C3310607 - Shoalhaven Transfers	861,818.4	0			861,818.4	0
	<b>W010 - Metropolitan Water Plan</b>	<b>861,818.4</b>	<b>0</b>			<b>861,818.4</b>	<b>0</b>
W011 - Warragamba Dam Spillway	C4121101 - Warragamba Dam Landscaping & Visitors Centre	33,601,675.14	216,000,000	19,928,326.32	527,040,000	53,530,001.46	743,040,000
	C251061D - Warr Spill, gates, vis centre	81,011.28	0	34,192,127.04	0	34,273,138.32	0
	C143061D - Warragamba Dam Spillway Gate	0	0	3,032,552.28	0	3,032,552.28	0
	C4421101 - Office Fitouts	-1,214,640	0			-1,214,640	0
	<b>W011 - Warragamba Dam Spillway</b>	<b>32,468,046.42</b>	<b>216,000,000</b>	<b>57,153,005.64</b>	<b>527,040,000</b>	<b>89,621,052.06</b>	<b>743,040,000</b>
W012 - Warragamba Dam general upgrade	C4121101 - Warragamba Dam Landscaping & Visitors Centre	-8,640,000	0	8,640,000	0	0	0
	<b>W012 - Warragamba Dam general upgrade</b>	<b>-8,640,000</b>	<b>0</b>	<b>8,640,000</b>	<b>0</b>	<b>0</b>	<b>0</b>
W013 - Warragamba Pipelines upgrades	C1130401 - Land Acquisition	-719,057.52	0	-2,743.56	0	-721,801.08	0
	<b>W013 - Warragamba Pipelines upgrades</b>	<b>-719,057.52</b>	<b>0</b>	<b>-2,743.56</b>	<b>0</b>	<b>-721,801.08</b>	<b>0</b>
W017 - Prospect Reservoir upgrades	C1221201 - Prospect Reservoir Embankment Stabilisation			1,579.56	0	1,579.56	0

Top Page up Page down Bottom

# BI DEMO – Report Studio

## OPEX EP Budget Report

Total			2008/09	2009/10
			Budget	Budget
6 Corporate Services	61 Corporate Services Management	3190 - Board & Committees - Fees & Allowances	240,000	250,000
		3300 - Advertising	61,400	41,200
		3305 - Advertising; staff recruitment	200,000	50,000
		3307 - Corporate Staff Medical Assessments	3,000	10,000
		3315 - Audit fees	176,580	174,000
		3317 - Internal & Probity Audits	160,000	150,000
		3319 - Operational Audits	58,700	280,200
		3325 - Bank fees, charges	3,500	1,200
		3340 - Catering	60,850.12	40,450
		3384 - Consumables	146,000.04	139,000
		3405 - Couriers	34,000	12,100
		3410 - Debt collection	2,000	2,000
		3415 - Education / HECS fees	30,000	40,000
		3435 - Accommodation & meals	55,650	117,700
		3460 - Freight & cartage	1,800	1,100
		3485 - General expenses	52,000	1,142,000
		3486 - General hire/ rental	18,000.04	36,000
		3535 - Legal expenses	200,000.04	150,000
		3567 - Management fees	18,900	23,900
		3595 - Memberships, associations	597,555	70,880



# BI DEMO – Analysis Studio

## OPEX Actual vs Budget - by Div by Sect by GL Account

		OPEX_Actual	OPEX_Budget
66 - Information Technology	1329 - Materials	1,848,746.46	1,368,975.78
	132B - Energy	1,334,751.96	1,958,480.16
	1324 - Licence Fees	3,546	0
	1326 - Contractors	9,616,322.46	5,869,063.02
	1332 - Insurance Premiums	54,749,881.26	54,367,680
	1322 - Insurance Claims	6,887,570.52	0
	2525 - Accumulated depreciation	6,217,111.56	0
	1334 - Loss (Gain) on Disposal	9,423,601.44	0
	132C - Maintenance assets & equipment	-128,836.5	-260,509.26
	1311 - Employee related	119,315,225.4	46,949,741.88
	1111 - SWC bulk water fixed charge	-645,009,120	-771,441,984
	1114 - Other bulk water	-126,709.56	0
	1335 - Loan revaluation/ reduction	312,156,818.94	156,930,236.52
	1337 - Dividend	155,454,000	236,281,847.76
	1116 - Ancillary services	-39,068,491.44	-20,193,974.82
	1333 - Depreciation	177,715,852.92	195,600,000
	132P - Energy Drought Pumping	1,486.98	0
	2715 - Borrowings	6,100.32	0
	1336 - Income tax equivalent	80,549,127.42	117,954,198.12
	271A - Provisions - employee entitlm.	0	0
2711 - Creditors & accrued charges	141,030.36	0	
1325 - Consultancies	486,596.64	2,197,518.72	

# BI DEMO – Analysis Studio

## OPEX Actual vs Budget - by Div by Sect by GL Account

		OPEX_Actual	OPEX_Budget
61 - Corporate Services Management	3332 - Bulk water purchases	875.1	322,000.02
	3570 - Materials - chemicals	549.9	0
	3575 - Materials - general	374,238.96	0
	3580 - Materials - maintenance	25,768.56	0
	3585 - Materials - operations	1,389,492.96	1,046,975.76
	3590 - Materials - personal safety	57,820.98	0
	<b>1329 - Materials</b>	<b>1,848,746.46</b>	<b>1,368,975.78</b>
62 - Legal	3332 - Bulk water purchases	875.1	322,000.02
	3570 - Materials - chemicals	549.9	0
	3575 - Materials - general	374,238.96	0
	3580 - Materials - maintenance	25,768.56	0
	3585 - Materials - operations	1,389,492.96	1,046,975.76
	3590 - Materials - personal safety	57,820.98	0
	<b>1329 - Materials</b>	<b>1,848,746.46</b>	<b>1,368,975.78</b>
63 - Human Resources	3332 - Bulk water purchases	875.1	322,000.02
	3570 - Materials - chemicals	549.9	0
	3575 - Materials - general	374,238.96	0
	3580 - Materials - maintenance	25,768.56	0
	3585 - Materials - operations	1,389,492.96	1,046,975.76
	3590 - Materials - personal safety	57,820.98	0

# BI DEMO – Analysis Studio

## SCA Income Statement

		2009009		
		Actual_Expnd	Curr_Apprv_Annl_Bdgt	Variance
1111 - SWC bulk water fixed charge	1000 - SWC bulk water fixed charge	-5,600,532	-5,600,532	0
1112 - SWC bulk water variable charge	1002 - SWC bulk water variable charge	-9,380,461.74	-9,792,635	-412,173.26
1114 - Other bulk water	1010 - Income - other bulk water	-60,000	-82,718.19	-22,718.19
1115 - Dam safety/ mining consulting	1020 - Income - dam safety consulting	-9,438	-37,649.12	-28,211.12
	1030 - Income - mining consulting	-60,308.66	-25,000	35,308.66
1116 - Ancillary services	1040 - Income - Conference Centre	-1,200	-6,250	-5,050
	1060 - Income - cottages	-132,315.55	-12,083.33	120,232.22
	1070 - Income - freedom information	-50	0	50
	1075 - Income - royalties	-8,562.09	-3,750	4,812.09
	1090 - Income - other	-20,000	-26,250	-6,250
1121 - Interest	1100 - Interest - bank	-12,679.94	-14,166.67	-1,486.73
	1110 - Interest - TCorp Hourglass	-28,589.02	-60,833.33	-32,244.31
1311 - Employee related	3310 - Agency hire of staff	-14,894.57	-10,000	4,894.57
1321 - Administration	3300 - Advertising	0	1,250	1,250
	3305 - Advertising; staff recruitment	0	20,000	20,000
	3307 - Corporate Staff Medical Assessments	0	250	250
	3315 - Audit fees	-110,016.67	0	110,016.67
	3317 - Internal & Probity Audits	-23,120	0	23,120
	3319 - Operational Audits	-5,923	0	5,923

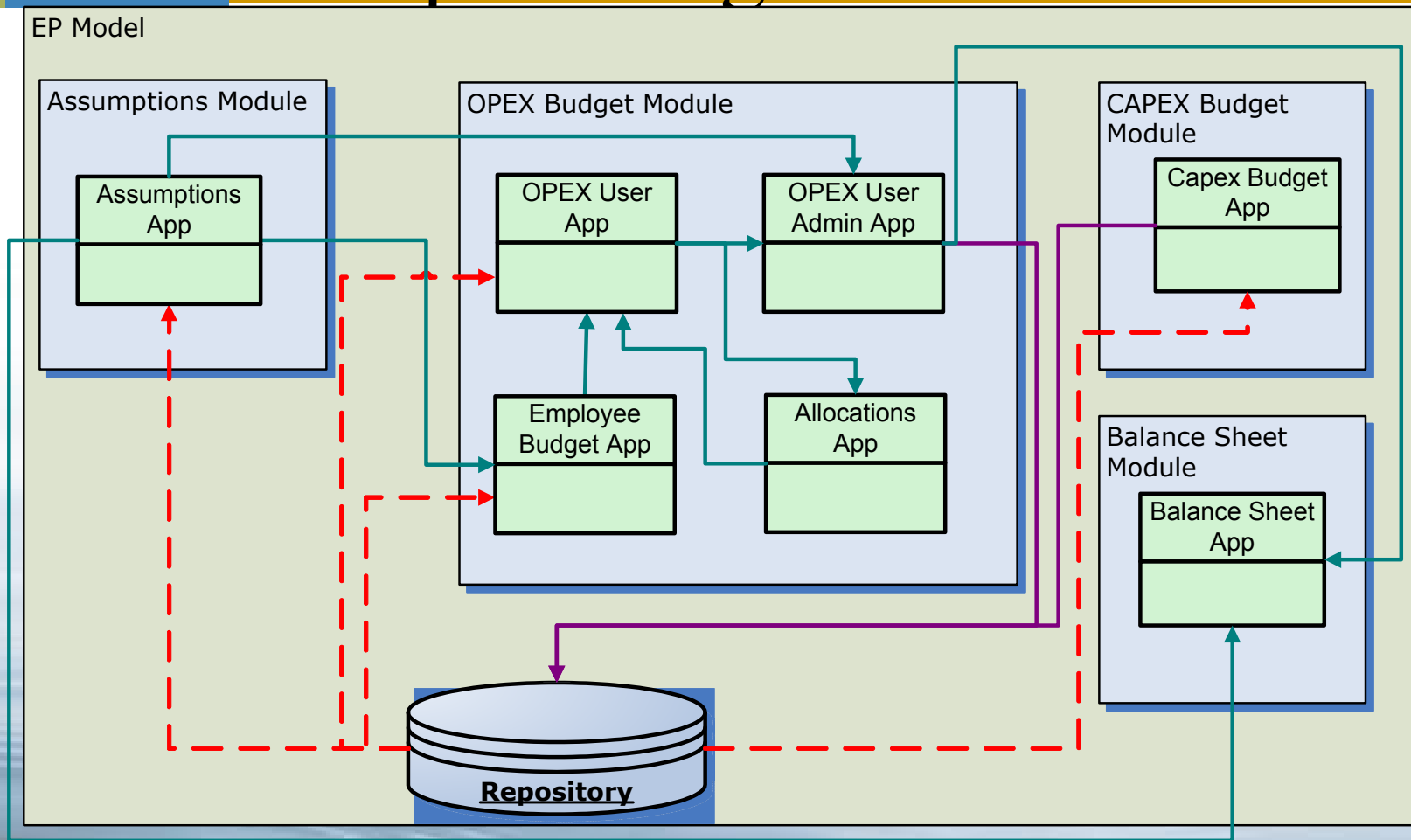
# EP - DEMO

## ➤ COGNOS EP 8.3 Applications

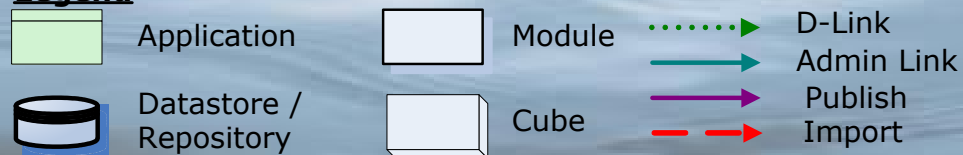


**Tallowa Dam**

# Cognos 8.3 Planning Applications Enterprise High Level Model



## Legend



# EP DEMO – OPEX Application

Contributor: 25512 Gihan Khalil Log off ?

**Reviews**

- [-] 0 Sydney Catchment Authority
  - [+] 1 Executive
  - [+] 2 Bulk Water
  - [+] 3 Catchment Ops & Major Projects
  - [+] 4 Strategy and Policy
  - [+] 5 Dam Safety
  - [+] 6 Corporate Services
    - 61 Corporate Services Managemen
    - 62 Legal
    - 63 Human Resources
    - 64 Corporate Finance
    - 65 Finance
    - 66 Information Technology
    - 67 Procurement
    - 68 Property Administration
    - 69 Vacant
  - [+] 8 NWP Group
  - [+] 9 Environment & Planning

You are a reviewer for:

Name	State	Ownership	Reviewer	Last Data Change
<a href="#">6 Corporate Services</a>	Incomplete	<a href="#">Email All</a>	<a href="#">Email All</a>	1:32:22 PM - Thursday, 25 June 2009

Which is made up of:

Name	State	Ownership	Reviewer	Last Data Change
<a href="#">61 Corporate Services Management</a>	Work In Progress	<a href="#">Cognos Consultant</a>	<a href="#">D6 Corporate Services</a>	10:09:48 AM - Thursday, 25 June 2009
<a href="#">62 Legal</a>	Work In Progress	<a href="#">Gihan Khalil</a>	<a href="#">D6 Corporate Services</a>	10:09:46 AM - Thursday, 25 June 2009
<a href="#">63 Human Resources</a>	Work In Progress	<a href="#">Daphne Wu</a>	<a href="#">D6 Corporate Services</a>	10:09:48 AM - Thursday, 25 June 2009
<a href="#">64 Corporate Finance</a>	Work In Progress	<a href="#">Cognos Consultant</a>	<a href="#">D6 Corporate Services</a>	10:09:40 AM - Thursday, 25 June 2009

**Workflow information for 6 Corporate Services:**

Current state: Incomplete.  
Some items that make up this e>List item are not started. [More...](#)

Time of last state change: 3:41:54 PM - Thursday, 27 November 2008

User who last changed state: [Cognos Consultant](#)

Viewed: no  
Reviewed: no  
Document Attached: no  
Size limit: 1 MBs

# EP DEMO – OPEX Income

OPEX User Application | Contributions | 61 Corporate Services Management - Cognos Planning - Contributor

File Edit View Tools Actions Help

Work Plan **Income** Employee Expenses Agency Hire Administration Expenses Licence Fees Expenses Consultancies Expenses

Income Amount Total 2008/09 Actual

	Jul	Aug	Sep	Oct	Nov	Dec	Jan	Feb	Mar	Apr	May	Jun	Total
1000 - SWC bulk water fixed charge	\$0	\$0	\$0	\$0	\$0	\$0	\$0	\$0	\$0	\$0	\$0	\$0	\$0
1002 - SWC bulk water variable charge	\$0	\$0	\$0	\$0	\$0	\$0	\$0	\$0	\$0	\$0	\$0	\$0	\$0
1004 - SWC bulk water rebate	\$0	\$0	\$0	\$0	\$0	\$0	\$0	\$0	\$0	\$0	\$0	\$0	\$0
1006 - SWC W/T016 adjustment	\$0	\$0	\$0	\$0	\$0	\$0	\$0	\$0	\$0	\$0	\$0	\$0	\$0
1008 - SWC Rebate for Fire Fighting	\$0	\$0	\$0	\$0	\$0	\$0	\$0	\$0	\$0	\$0	\$0	\$0	\$0
1010 - Income - other bulk water	\$0	\$0	\$0	\$0	\$0	\$0	\$0	\$0	\$0	\$0	\$0	\$0	\$0
1020 - Income - dam safety consulting	\$0	\$0	\$0	\$0	\$0	\$0	\$0	\$0	\$0	\$0	\$0	\$0	\$0
1030 - Income - mining consulting	\$0	\$0	\$0	\$0	\$0	\$0	\$0	\$0	\$0	\$0	\$0	\$0	\$0
1040 - Income - Conference Centre	\$(520)	\$(2,435)	\$(2,455)	\$(2,557)	\$6,247	\$0	\$0	\$0	\$0	\$0	\$0	\$0	\$(1,720)
1050 - Income - Shoalhaven properties	\$0	\$0	\$0	\$0	\$0	\$0	\$0	\$0	\$0	\$0	\$0	\$0	\$0
1060 - Income - cottages	\$(5,395)	\$(38,999)	\$(8,402)	\$0	\$46,797	\$0	\$0	\$0	\$0	\$0	\$0	\$0	\$(5,999)
1063 - Rental Income	\$0	\$0	\$0	\$0	\$0	\$0	\$0	\$0	\$0	\$0	\$0	\$0	\$0
1065 - Income - energy demand mgt program	\$0	\$0	\$0	\$0	\$0	\$0	\$0	\$0	\$0	\$0	\$0	\$0	\$0
1070 - Income - freedom information	\$0	\$0	\$0	\$0	\$0	\$0	\$0	\$0	\$0	\$0	\$0	\$0	\$0
1075 - Income - royalties	\$4,287	\$0	\$0	\$(4,287)	\$0	\$0	\$0	\$0	\$0	\$0	\$0	\$0	\$0
1077 - Income - Grants	\$0	\$0	\$0	\$0	\$0	\$0	\$0	\$0	\$0	\$0	\$0	\$0	\$0
1080 - Income - sale of publications	\$0	\$0	\$0	\$0	\$0	\$0	\$0	\$0	\$0	\$0	\$0	\$0	\$0
1088 - Income - Insurance Recoveries	\$0	\$0	\$0	\$0	\$0	\$0	\$0	\$0	\$0	\$0	\$0	\$0	\$0
1090 - Income - other	\$100	\$0	\$(250)	\$0	\$0	\$0	\$0	\$0	\$0	\$0	\$0	\$0	\$(150)
1095 - Income - discount	\$0	\$0	\$0	\$0	\$0	\$0	\$0	\$0	\$0	\$0	\$0	\$0	\$0
<b>Total</b>	<b>\$(1,528)</b>	<b>\$(41,434)</b>	<b>\$(11,106)</b>	<b>\$(6,844)</b>	<b>\$53,044</b>	<b>\$0</b>	<b>\$0</b>	<b>\$0</b>	<b>\$0</b>	<b>\$0</b>	<b>\$0</b>	<b>\$0</b>	<b>\$(7,869)</b>

Current owner: Cognos Consultant





# Key Achievements

- Reverse engineer the Sun relational tables.
- Redevelop finance Cognos Planning model in Cognos 8.
- Create an extract from Chris21 for Employee data.
- Develop Finance Reports from EP and SUN extracts.
- Back load Budget data to SUN financial system.



**Woodford Creek Dam**

# Improvement of Change Management

- Users have a good understanding of the implication of the change request
- Enabling SCA to make business-like decisions about change requests
  - Risks, Costs and Future Benefits
- Implementation of a Change Request Methodology



**Cordeaux Dam**

# Secure Working Environment

- Integration of the Cognos security with SCA active directory
- Single point of data input by the Division and Section Managers
- Visibility to Division and Section data is security driven
- Administration access limited to the SCA Finance Section



**Wingecarribee Dam**

# Management of User Expectations

- The Capacity to manage the rapid growth of future demands
- Managing the resistance to changes to Cognos 8.3
- Automation of time-intensive tasks
- Access to key information in a timely manner
- Delivering support to users



**Nepean Dam**

# Questions?

➤ QUESTIONS TIME?

