



IBM Cognos Forum

Ignite knowledge, ideas, connections

IBM Cognos TM1 Super Session - Reach Further and Faster

Kevin Jessop – Senior FPM Consultant

Information Management

Cognos.
software

Agenda

- > IBM Cognos TM1 Active Forms and Action Buttons**
- > IBM Cognos TM1Web**
- > IBM Cognos Executive Viewer**
- > IBM Cognos TM1 Blue Prints**

IBM Cognos TM1 Active Forms & Action

- > Drill Downs
- > Zero Suppression
- > Excel Formula
- > Dynamic Reports

The screenshot shows a Microsoft Excel spreadsheet with the following data table:

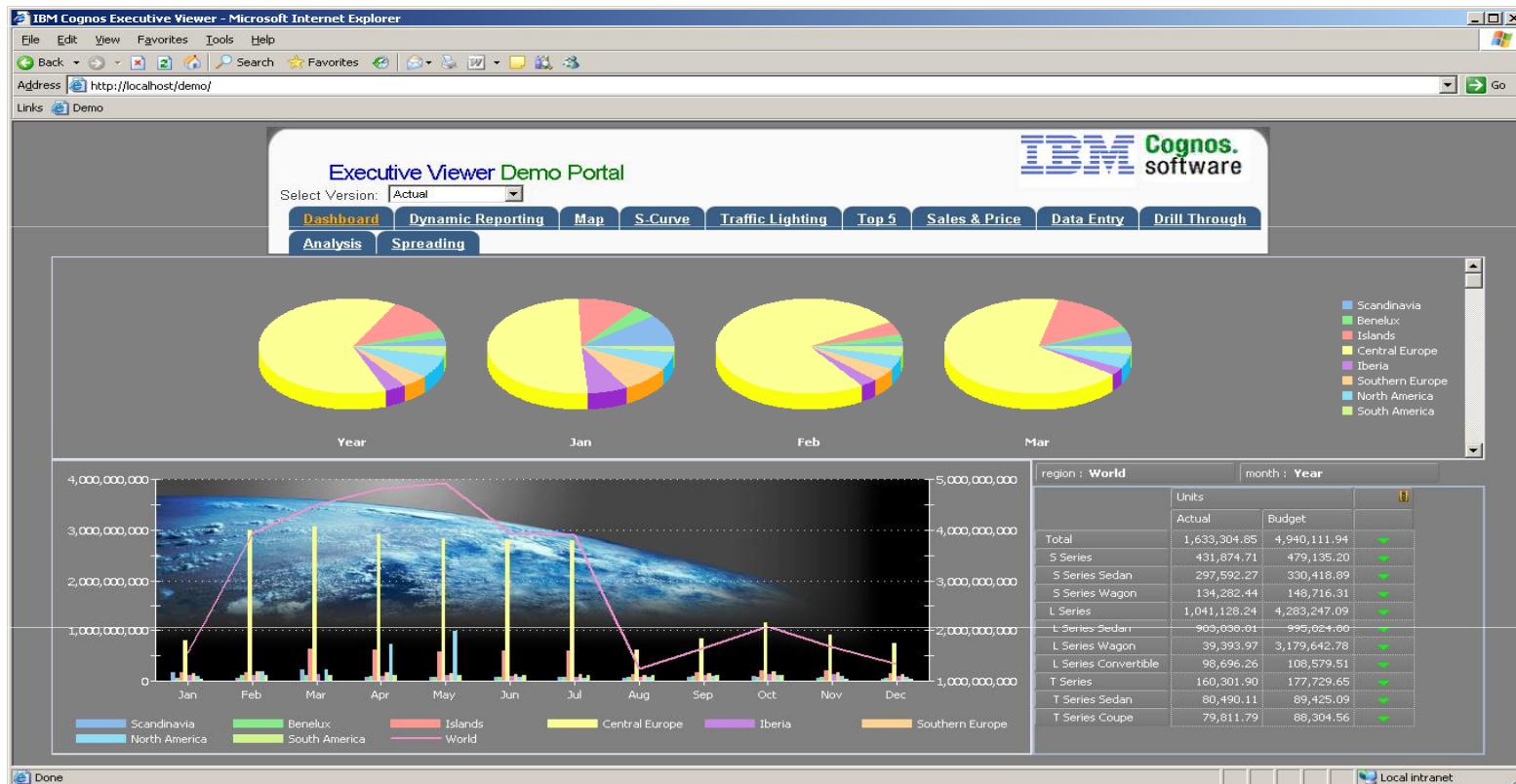
	Jan	Feb	Mar	Apr	May	Jun	Jul	Aug	Sep	Oct	Nov	Dec
- World	03143.22715	184987.2841	3074918.082	224198.8362	230010.5558	194120.967	191708.6177	50411.15711	07789.58907	83500.28488	04899.70041	55239.7227
- Europe	42315.33319	156787.1134	3045785.069	176576.0574	173496.68	170262.9003	168364.8786	32981.79607	43432.34262	58534.03046	45010.64573	36221.59589
+ Scandinavia	4801.60977	3506.046512	7657.740759	2926.958698	2816.71214	2725.465582	2661.71214	2686.71214	3088.698373	3272.698373	1571.187397	1338.602779
+ Benelux	1886.965048	3690.134658	3771.919407	3358.615195	2985.943964	2892.788363	2815.711508	2906.619	3344.849926	2394.063286	2188.003499	1799.003057
+ Islands	4539.239804	4905.427452	29700.03348	29107.66087	28541.88259	28337.29575	28296.13443	3571.284091	4605.48954	5608.539529	5469.495911	4146.425092
+ Central Europe	22048.73103	133123.3314	135912.2612	131121.9095	128282.4253	127831.5412	126395.6441	16981.39522	22998.54994	36151.01736	25235.5813	20512.50171
+ Iberia	4604.705196	5023.173386	5436.860386	4180.913165	5485.716023	3562.809357	3259.67642	3481.392676	4814.219317	5625.065537	5336.796816	4247.552982
+ Southern Europe	4434.082339	6539	2863306.254	5880	5384	4913	4936	3354.392946	4580.535524	5482.646375	5209.580806	4177.510278
- Americas	4295.621391	12572.53181	13495.97385	31985.14193	40876.23685	8226.447855	7706.300241	7791.722154	8719.608163	9394.615536	4251.421787	3380.487918
+ North America	3318.360118	6364.356865	7335.438489	26107.49278	35130.79856	2573.247424	2030.127105	2110.948535	2764.59037	3249.780694	3112.9596	2491.052805
+ South America	977.261273	6208.174948	6160.535358	5877.649157	5745.438284	5653.20043	5676.173136	5680.77362	5955.017793	6144.834842	1138.462186	889.4351125

The formula bar shows: `=DBRW(B9,C11,$B19,$C$13,$C$12,D$16)`

A blue 'Rebuild' button is located in cell E12.

IBM Cognos Executive Viewer

- > Performance
- > Rich and Easy API
- > Asymmetrical stack dimensions
- > Drag & Drop reports
- > Slice & Dice

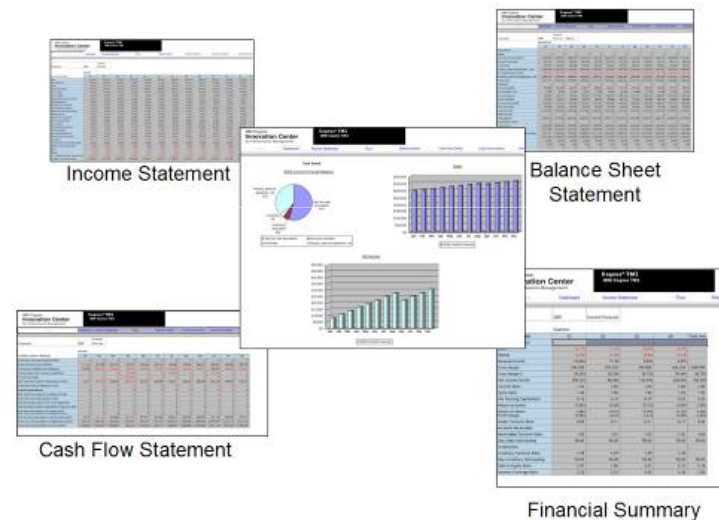


IBM Cognos Executive Viewer Cont...

DataEntry														
model : L Series 2WD account1 : Units actvsbud : Actual														
	Year	Jan	Feb	Mar	Apr	May	Jun	Jul	Aug	Sep	Oct	Nov	Dec	
World	1,142,020.43	8,236.42	145,176.87	168,927.05	188,616.15	199,421.01	164,701.46	164,517.89	30,424.48	31,418.75	24,307.95	8,502.46	7,769.95	
Europe	978,252.41	2,802.57	132,208.17	155,013.90	155,707.91	157,188.72	155,343.81	155,152.68	21,070.18	21,892.30	14,735.78	3,878.69	3,257.71	
Scandinavia	14,665.73	3.85	1,629.00	1,629.00	1,629.00	1,629.00	1,629.00	1,629.00	1,629.00	1,629.00	1,629.00	1,629.00	0.74	0.15
Denmark	4,887.75	0.35	543.00	543.00	543.00	543.00	543.00	543.00	543.00	543.00	543.00	543.00	0.35	0.05
Norway	4,887.75	0.35	543.00	543.00	543.00	543.00	543.00	543.00	543.00	543.00	543.00	543.00	0.35	0.05
Sweden	4,890.24	3.15	543.00	543.00	543.00	543.00	543.00	543.00	543.00	543.00	543.00	543.00	0.04	0.04
Benelux	133,321.25	0.19	16,665.00	16,665.00	16,665.00	16,665.00	16,665.00	16,665.00	16,665.00	16,665.00	1.05	0.00	0.00	
Belgium	44,440.42	0.06	5,555.00	5,555.00	5,555.00	5,555.00	5,555.00	5,555.00	5,555.00	5,555.00	0.35	0.00	0.00	
Luxemburg	44,440.41	0.06	5,555.00	5,555.00	5,555.00	5,555.00	5,555.00	5,555.00	5,555.00	5,555.00	0.35	0.00	0.00	
Netherlands	44,440.42	0.06	5,555.00	5,555.00	5,555.00	5,555.00	5,555.00	5,555.00	5,555.00	5,555.00	0.35	0.00	0.00	
Islands	127,338.41	0.41	648.00	24,690.00	24,690.00	24,690.00	24,690.00	24,690.00	648.00	648.00	648.00	648.00	648.00	
Great Britain	63,669.17	0.17	324.00	12,345.00	12,345.00	12,345.00	12,345.00	12,345.00	324.00	324.00	324.00	324.00	324.00	
Ireland	63,669.24	0.24	324.00	12,345.00	12,345.00	12,345.00	12,345.00	12,345.00	324.00	324.00	324.00	324.00	324.00	
Central Europe	660,843.54	0.52	108,642.00	108,642.00	108,642.00	108,642.00	108,642.00	108,642.00	0.39	0.54	8,989.01	0.58	0.50	
France	330,534.17	0.26	54,321.00	54,321.00	54,321.00	54,321.00	54,321.00	54,321.00	0.19	0.28	4,606.91	0.29	0.24	
Germany	330,309.36	0.26	54,321.00	54,321.00	54,321.00	54,321.00	54,321.00	54,321.00	0.20	0.26	4,382.10	0.29	0.25	
Iberia	34,307.27	2,797.09	3,070.17	3,384.86	2,527.91	4,008.72	2,163.81	1,972.68	2,127.39	2,949.22	3,468.07	3,228.80	2,608.55	
Portugal	3.23	0.27	0.29	0.32	0.24	0.39	0.20	0.20	0.19	0.26	0.31	0.29	0.26	
Spain	34,304.04	2,796.83	3,069.88	3,384.54	2,527.68	4,008.32	2,163.61	1,972.47	2,127.20	2,948.96	3,467.75	3,228.51	2,608.29	
Southern Europe	7,776.21	0.51	1,554.00	3.04	1,554.00	1,554.00	1,554.00	1,554.00	0.39	0.54	0.65	0.58	0.51	
Greece	3,888.09	0.25	777.00	1.52	777.00	777.00	777.00	777.00	0.20	0.27	0.32	0.28	0.26	
Italy	3,888.12	0.26	777.00	1.52	777.00	777.00	777.00	777.00	0.20	0.27	0.33	0.30	0.25	
Americas	114,551.22	512.38	8,941.85	9,886.30	28,881.39	38,205.45	5,330.80	5,338.37	5,327.46	5,499.61	5,545.33	596.92	485.38	
North America	70,126.26	512.07	4,005.85	4,950.30	23,945.39	33,269.45	394.80	402.37	391.46	563.61	609.33	596.56	485.08	
Canada	63,670.03	0.00	3,453.00	4,353.00	23,432.00	32,432.00	0.00	0.00	0.00	0.00	0.00	0.00	0.00	
Mexico	3.23	0.25	0.28	0.31	0.26	0.41	0.21	0.19	0.20	0.27	0.32	0.29	0.25	
United States	6,453.00	511.82	552.56	596.99	513.13	837.04	394.59	402.17	391.26	563.33	609.00	596.27	484.83	
South America	44,424.97	0.31	4,936.00	4,936.00	4,936.00	4,936.00	4,936.00	4,936.00	4,936.00	4,936.00	4,936.00	4,936.00	0.35	0.31
Argentina	11,106.00	0.00	1,234.00	1,234.00	1,234.00	1,234.00	1,234.00	1,234.00	1,234.00	1,234.00	1,234.00	1,234.00	0.00	0.00
Brazil	11,106.79	0.25	1,234.00	1,234.00	1,234.00	1,234.00	1,234.00	1,234.00	1,234.00	1,234.00	1,234.00	1,234.00	0.28	0.25
Chile	11,106.07	0.02	1,234.00	1,234.00	1,234.00	1,234.00	1,234.00	1,234.00	1,234.00	1,234.00	1,234.00	1,234.00	0.03	0.02
Uruguay	11,106.10	0.03	1,234.00	1,234.00	1,234.00	1,234.00	1,234.00	1,234.00	1,234.00	1,234.00	1,234.00	1,234.00	0.04	0.03

IBM Cognos TM1 Blue Prints

- What they are:
 - Pre-defined data, process and policy model
 - Developed by Cognos Innovation Center
 - ...In conjunction with leading customers
 - Enables best practices
 - Driver-based
 - High Participation
 - High Frequency
 - Enables rapid time-to-value
 - Reduced project implementation time and risk



Evaluation Forms

SHARE YOUR FEEDBACK AND WIN

Visit IBM Cognos Central to fill out your session evaluations online.

- > **Each completed evaluation** qualifies you to win one of five \$100 daily prizes.
- > **Complete evaluations for every session you attend** and qualify to win an additional \$500! An overall conference survey will be available at IBM Cognos Central on Friday morning, and will also be emailed to you.