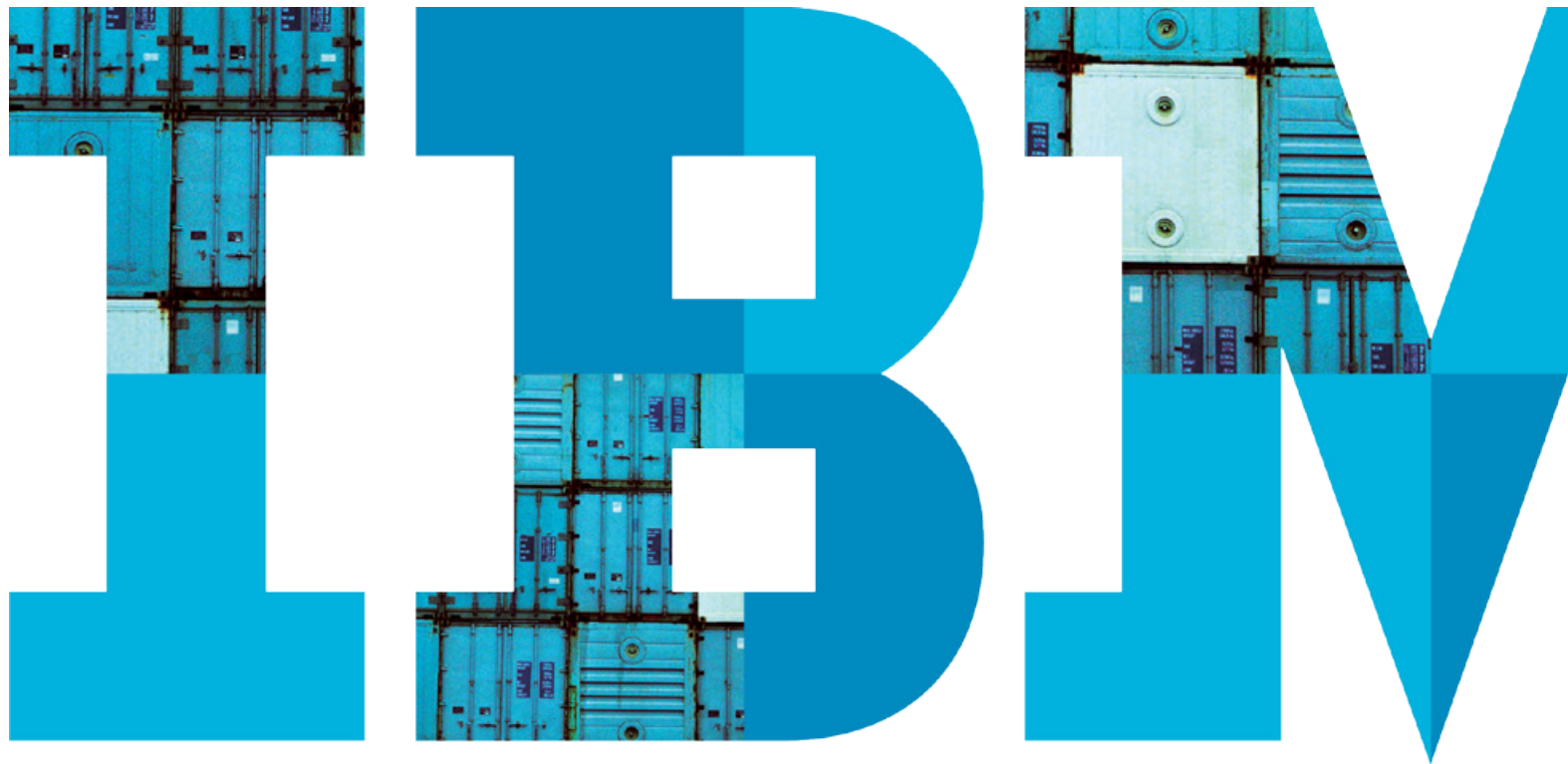


# Six reasons to move from Oracle to IBM

*Learn how companies around the world are boosting performance, cutting costs and managing growth*



1

---

**Performance**

Specialist engineering and manufacturing company  
Maschinenfabrik Reinhausen

2

---

**Cost savings**

Agriculture and chemical holding group  
Agrofert

3

---

**Usability**

Consumer products company  
Newell Rubbermaid

4

---

**Scalability**

Automotive bearings and components supplier  
Schaeffler KG

5

---

**Reliability**

Payment company  
Payment Solution Providers

6

---

**Efficiency**

Private bank  
Banco de Crédito del Perú

---

## Introduction



### What can IBM do for you?

As the world becomes increasingly interconnected and intelligent, many organizations are looking to become smarter about their use of IT. They need to seamlessly deal with growing volumes of data traveling at ever-greater velocity, get actionable business insight from their information faster and gain greater data center efficiencies from their operations.

Those needs create a daunting array of workload challenges and place tremendous demands on IT systems. That's why IBM has integrated and optimized its software and hardware to meet the new workload requirements of today's global business environment. And that's why moving to IBM is one of the smartest moves you can make.

1 Performance

2 Cost savings

3 Usability

4 Scalability

5 Reliability

6 Efficiency

## Six reasons to move from Oracle to IBM

---

Here are six companies like yours that tackled important challenges by moving from Oracle to IBM:

- Faster response time compared to a previous Oracle database improved total business productivity for **Maschinenfabrik Reinhausen**.
- The IT group at **Agrofert** delivered impressive savings by reducing administration, support and licensing costs.
- Replacing its legacy databases enabled **Newell Rubbermaid** to reduce average storage volumes by 58 percent and cut total storage costs by US\$300,000 during the first year.
- By deploying its existing infrastructure more effectively, **Schaeffler KG** found a way to keep up with rapid growth in data volumes and avoid the need to expand capacity.
- With a powerful, reliable infrastructure, **Payment Solution Providers** was able to deliver 99.999 percent availability while lowering IT costs up to 35 percent.
- **Banco de Crédito del Perú** replaced Oracle with IBM® DB2® and IBM hardware, delivering cost-effective performance for its core SAP systems.



Click on a company name for a quick synopsis. Download a PDF or read more about any case that interests you.

## Performance: Maschinenfabrik Reinhausen



*“Moving from Oracle to IBM DB2 has made a very significant contribution to our ongoing performance improvement strategy—without requiring expensive hardware upgrades or complex database optimization work.”*

—Franz Moser  
Chief Information Officer  
Maschinenfabrik Reinhausen

With the growth of its international business, Maschinenfabrik Reinhausen was introducing more data, new applications and additional users into its SAP ERP environment. Support for additional languages also required the introduction of Unicode, which increased data volumes further. As a result, Oracle database performance was suffering, which impacted user productivity and business efficiency. Working with IBM Global Technology Services, the company migrated data from Oracle to IBM DB2, utilizing the IBM DB2 Deep Compression feature to reduce data volumes and boost performance for the company’s SAP ERP and SAP NetWeaver Business Warehouse environments.

### Results

- IBM DB2 Deep Compression has reduced total database sizes by around 40 percent, and delivered significant performance improvements.
- Query response times have been reduced by 25 percent, batch processes by 44 percent and backups by 71 percent.
- Faster database response has improved total business productivity, with reports available more quickly and higher transaction throughput.

[Download the PDF](#)



## Cost savings: Agrofert

Agriculture, foods and chemicals group Agrofert found that rapid growth had resulted in more than 160 different systems operating in subsidiary companies. It was difficult to provide unified reporting, and support and license costs were rising. Adding yet more infrastructure with each new acquisition was not a scalable strategy. Agrofert implemented SAP ERP applications as a shared service for some of its subsidiaries, aiming to make these available subsequently throughout the enterprise, hosted at two locations on IBM Power Systems™ servers. The company migrated from a mixed database environment, including Oracle and Microsoft SQL Server, to IBM DB2 as its standard database and deployed centralized storage systems for critical business data.



### Results

- Eliminating local systems greatly reduced administration, support and license costs.
- Consolidated storage helps to reduce costs, and IBM DB2 Deep Compression will reduce total storage requirements.
- Total cost reductions are estimated at 20 percent.

*“We selected IBM DB2 as it offered the best combination of low license fees for SAP applications and low operational costs. With IBM DB2, we see savings in disk array capacity of an average of 20 percent, and system response speeds are about 15 percent faster.”*

—Luboš Pajer  
IT Manager  
Agrofert

[Download the PDF](#)



## Usability: Newell Rubbermaid

With several independent databases supporting SAP ERP and other business solutions, Newell Rubbermaid found it difficult to report across the different operating units. Opportunities to rationalize procurement, supply chains and production were being missed, and without global sales order processing, it was hard to be certain of business forecasts. Supporting the concept of the integrated enterprise, Newell Rubbermaid replaced its legacy databases, Oracle and Adabas, with IBM DB2 as its global standard for all SAP applications. To ensure performance, reliability and availability, Newell Rubbermaid deployed the new solution on IBM Power Systems servers.

### Results

- The IBM Systems solution for SAP NetWeaver Business Warehouse Accelerator enables Newell Rubbermaid to process business intelligence queries on average 30 to 50 times faster, and in some cases, as much as twice as fast as before, even without specific optimization of aggregated data.
- IBM DB2 Deep Compression has reduced average storage volumes by 58 percent, cutting total storage costs by US\$300,000 in year one.
- IBM DB2 integrated data cockpit has reduced administrative workload by 25 percent, so just one database administrator can now manage the entire landscape.

*“By using DB2 Deep Compression, Newell Rubbermaid has achieved average database compression ratios of 58 percent.... Additionally, database administration workload has been reduced by around 25 percent, with the integrated DBA Cockpit making a significant contribution to our cost-saving objectives.”*

— Creighton Kelly  
Director of IT for the SAP Infrastructure  
Newell Rubbermaid

[Download the PDF](#)



## Scalability: Schaeffler KG

Automotive bearings manufacturer Schaeffler KG found that increasing use of business analysis was driving rapid growth in data storage needs. As volumes grew, application performance tended to decline, frustrating the users in their search for information. Schaeffler KG migrated the databases for its SAP NetWeaver Business Intelligence (SAP NetWeaver BI) environment to IBM DB2.

*“IBM DB2 has achieved excellent performance and capacity savings for the SAP NetWeaver BI database, contributing directly to the effective use of business analysis within Schaeffler KG.”*

—Harald Gießler  
Chief Information Officer  
Schaeffler KG

### Results

- The immediate impact was to reduce the SAP NetWeaver BI database volume by 43 percent, from 8 TB to 4.5 TB, and other databases also benefited from significant reductions.
- With reduced total storage requirements, Schaeffler KG is able to deploy its existing infrastructure more effectively and avoid the need for capacity expansion.
- The migration to IBM DB2 has improved system performance, which allows Schaeffler KG to exploit its existing infrastructure without upgrade.

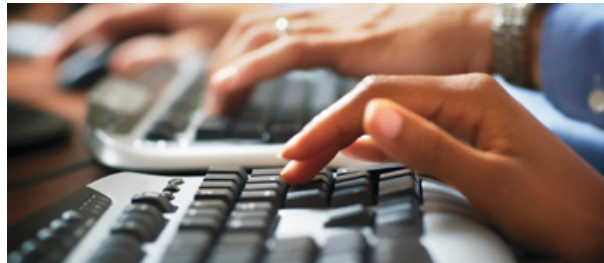
[Download the PDF](#)





## Reliability: Payment Solution Providers

The rollout of an HP and Oracle infrastructure lacked the security Payment Solution Providers (PSP) required, making it difficult to comply with the banking industry's PCI compliance standards. In addition, PSP was using separate servers for each of its clients' development, production and availability requirements. As a result, PSP anticipated having a sprawling, inefficient infrastructure that would take up too much space and rack up excessive costs for IT management, power and cooling, and software licenses. The company wanted to grow its business in North America and selected the z10™ Business Class mainframe with tightly integrated IBM z/OS® and DB2 software to support the development of new business channels for card processing.



### Results

- PSP expects to improve operating efficiencies and lower IT costs up to 35 percent.
- The mainframe with DB2 provides PSP the 99.999 percent availability needed to support its payments business.
- By running on the IBM System z® mainframe, PSP's Atlantics Payment Switch can process up to 5,000 transactions per second (TPS).

*“By teaming with IBM, we are actively pursuing new clients and opportunities, confident that our technology can keep pace and hold operating costs to a minimum. Further, selecting the IBM mainframe gives PSP instant credibility with potential clients thanks to its well-known security and reliability.”*

—**Danny Gurizzan**  
Executive Vice President of Operations  
Payment Solution Providers

[Read the story](#)



## Efficiency: Banco de Crédito del Perú

A range of isolated and outdated back-office applications were in place at Banco de Crédito del Perú (BCP), making it difficult to support these systems efficiently or effectively. Without a single repository for business information, reliable and accurate reporting was almost impossible, making it difficult for key decision makers to access the information they needed. Maintenance costs for the existing Oracle database environment were escalating, leading BCP to seek a more cost-effective solution. The company worked with IBM Software Services for Information Management and IBM Business Partner SYNOPSIS to deploy IBM DB2 9 for Linux, UNIX and Windows. The migration was completed within budget and on time in just 45 days, with the IBM teams maintaining total transparency of the process for the customer.

### Results

- Replacing the Oracle database with IBM DB2 is estimated to cut IT data management costs by 50 percent and computing storage costs by 45 percent.
- Combining IBM DB2 and SAP NetWeaver Business Warehouse technology has given Banco de Crédito del Perú centralized, high-performing and comprehensive enterprise management and business intelligence capabilities.
- The powerful and robust IBM BladeCenter and Power Systems servers provide the ideal platform, keeping all software running optimally with minimal management overhead.

[Download the PDF](#)



*“The IBM and SAP solution has proved such a success at BCP that there are plans to extend it to other companies in our parent group. Working with IBM and SAP, we have been able to transform our application and hardware landscapes, laying the groundwork for more efficient and effective operations in the future.”*

—Haydeé Urquiaga  
SAP Implementation Manager  
Banco de Crédito del Perú

## Resources

### Become a smarter database organization

IBM is ready to help you expand to support business growth, optimize resources, improve business agility and get more value from your software investment. It has already helped companies around the world reach their goals. Let's tackle yours next.

IBM hardware and software delivers the capabilities you need to reduce complexity and free up time to put more focus on innovation. They enable you to lower costs the smart way, without adding more complexity. And they enable insights and decision making fast enough for a business that's changing in real time—a business like yours.

### Click the company names to read these case studies and learn more about moving from Oracle to IBM:

- [Maschinenfabrik Reinhausen](#)
- [Agrofert](#)
- [Newell Rubbermaid](#)
- [Schaeffler KG](#)
- [Payment Solution Providers](#)
- [Banco de Crédito del Perú](#)

### To learn more about IBM solutions, visit:

- [ibm.com/breakfreetoibm](https://ibm.com/breakfreetoibm)
- [ibm.com/breakfree](https://ibm.com/breakfree)
- [ibm.com/websphere](https://ibm.com/websphere)
- [ibm.com/systems](https://ibm.com/systems)
- [ibm.com/db2](https://ibm.com/db2)



---

© Copyright IBM Corporation 2011

IBM Software Group  
Route 100  
Somers, NY 10589

Produced in the United States of America  
November 2011  
All Rights Reserved

IBM, the IBM logo, ibm.com and DB2 are trademarks or registered trademarks of International Business Machines Corporation in the United States, other countries or both. If these and other IBM trademarked terms are marked on their first occurrence in this information with a trademark symbol (® or ™), these symbols indicate U.S. registered or common law trademarks owned by IBM at the time this information was published. Such trademarks may also be registered or common law trademarks in other countries. A current list of IBM trademarks is available on the web at “Copyright and trademark information” at [ibm.com/legal/copytrade.shtml](http://ibm.com/legal/copytrade.shtml)

Linux is a registered trademark of Linus Torvalds in the United States, other countries or both.

Microsoft, Windows, Windows NT and the Windows logo are trademarks of Microsoft Corporation in the United States, other countries or both.

UNIX is a registered trademark of The Open Group in the United States and other countries.

Other company, product or service names may be trademarks or service marks of others.

References in this publication to IBM products or services do not imply that IBM intends to make them available in all countries in which IBM operates.



Please Recycle