

# IMAC 2014

Identify critical, non-performing areas of your business with Maximo Business Intelligence (BI) Packs

Johannes Tjoa  
Smarter Infrastructure Technical Specialist

9<sup>th</sup> September 2014



## Please note

IBM's statements regarding its plans, directions, and intent are subject to change or withdrawal without notice at IBM's sole discretion.

Information regarding potential future products is intended to outline our general product direction and it should not be relied on in making a purchasing decision.

The information mentioned regarding potential future products is not a commitment, promise, or legal obligation to deliver any material, code or functionality. Information about potential future products may not be incorporated into any contract. The development, release, and timing of any future features or functionality described for our products remains at our sole discretion.

Performance is based on measurements and projections using standard IBM benchmarks in a controlled environment. The actual throughput or performance that any user will experience will vary depending upon many factors, including considerations such as the amount of multiprogramming in the user's job stream, the I/O configuration, the storage configuration, and the workload processed. Therefore, no assurance can be given that an individual user will achieve results similar to those stated here.

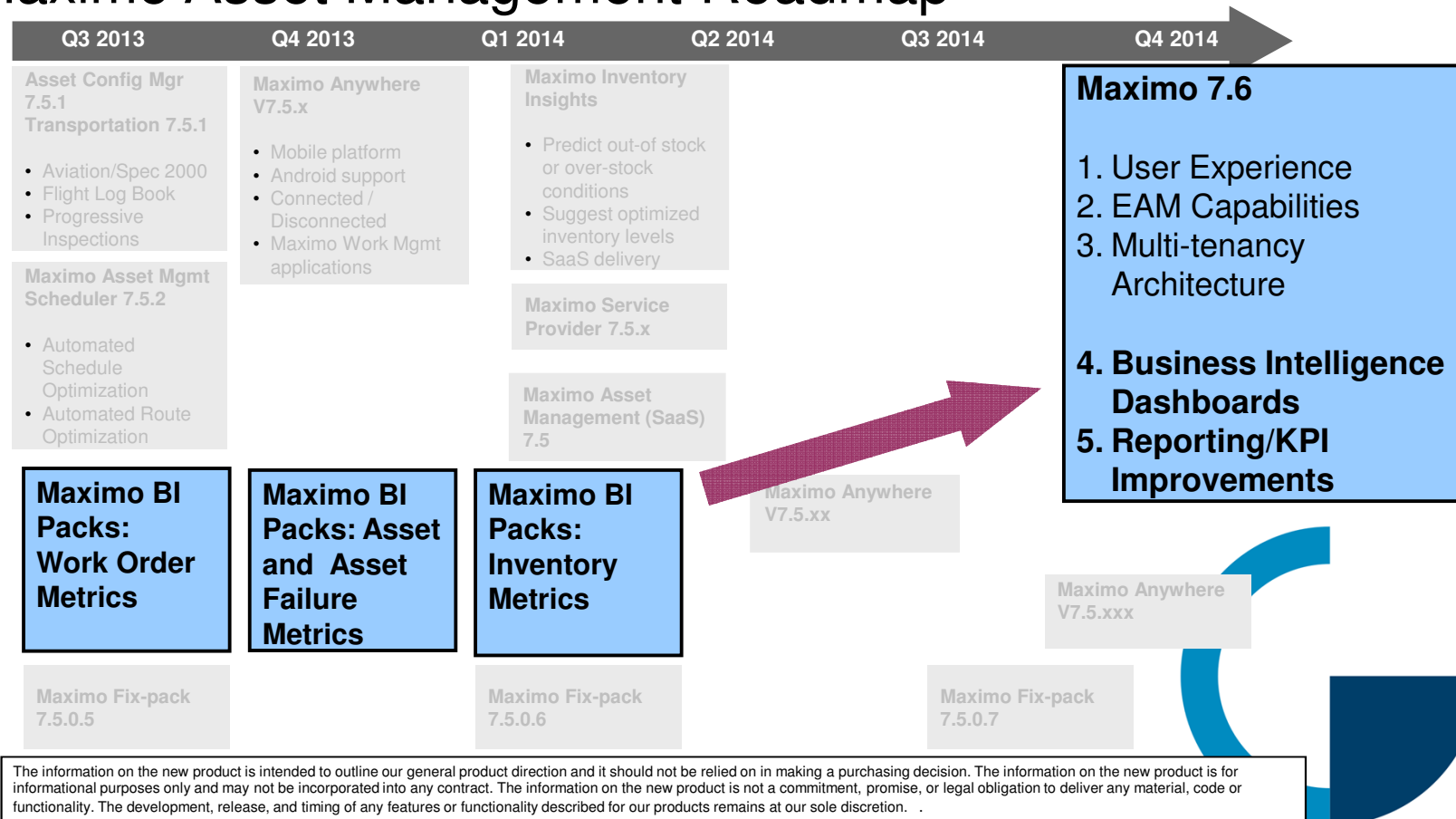


## Agenda

- Roadmap
- Content/Technology
- Maximo 7.Next
- Reference Materials



# Maximo Asset Management Roadmap



Content

# Current Maximo Report and Metric Offerings

Information for Day-to-Day Operational Tasks

- QBE, Application Export, Result Sets, KPIs, Enterprise Reports, Ad Hoc Reporting

**Job Plan Details**

Task ID	Description	Duration	Resched	Job Plan	Master Name	Owner	Owner Group
101	Reset Call Phone to New Employees	00:00					
102	Reset All New Employees	00:00					

**Asset Work Order and Specifications Report**

Asset	Description	Location	Parent	Rotating Item	Linear	Site	Date
11210	Circulation Fan-Centrifugal/ 20/000 CFM	BR210	11200	N	BEDEFORD	S/31/94	

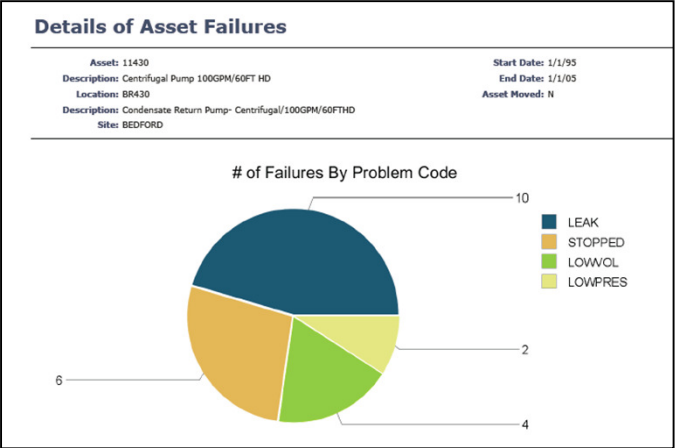
**Specifications**

Attribute	Unit of Base	Measure	Alphanumeric Value	Continuous	Start Measure	End Measure
SPEED			N			
SHAFTDIA			N			
CIRCUMF			N			
VASSTICH			Y			
MOUNTYP			Y			
CAPACITY			N			

**Inactive Reports**

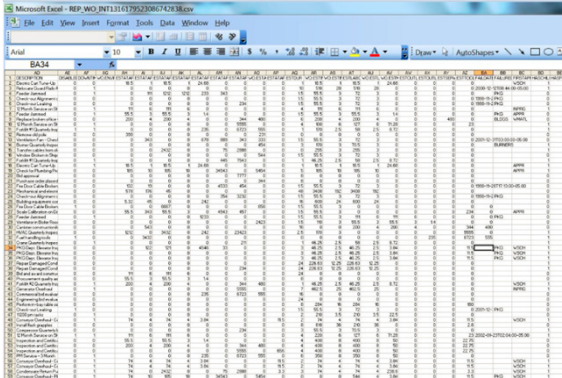
Max Record Limit	Value	Percent (%)
50	31	23.86
150	1	0.78
200	1	0.78
Undefined	98	74.81

# Your Feedback



Static...

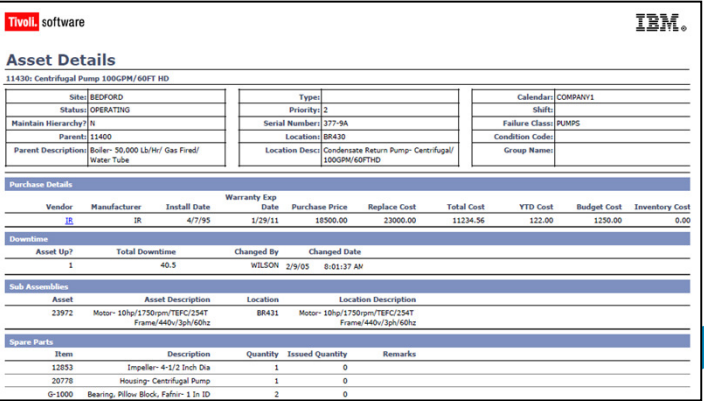
Difficult...




Microsoft Excel - REP\_WO\_PNT1314179520467231.Mex

BA34

Asset	Description	Location	Condition	Start Date	End Date	Asset Moved
11430	Centrifugal Pump 100GPM/60FT HD	BR430	OPERATING	1/1/95	1/1/05	N
...	...	...	...	...	...	...



Tivoli software 

### Asset Details

11430: Centrifugal Pump 100GPM/60FT HD

Field	Value
Site	BEDFORD
Type	
Calendar	COMPANY1
Status	OPERATING
Priority	2
Shift	
Maintain Hierarchy?	N
Serial Number	377-9A
Failure Class	PUMPS
Parent	11400
Locations	BR430
Condition Code	
Parent Description	Boiler- 50,000 Lb/Hr/ Gas Fired/ Water Tube
Location Desc	Condensate Return Pump- Centrifugal/ 100GPM/60FTHD
Group Name	

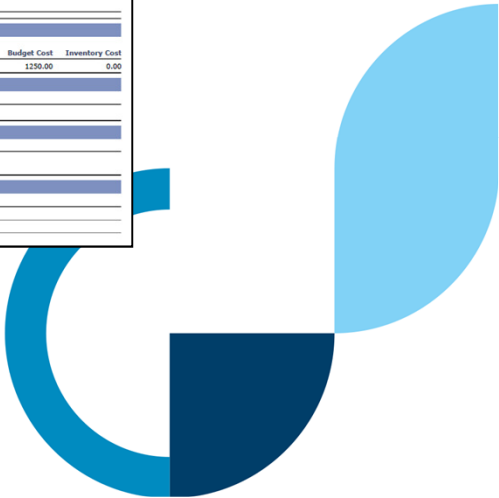
Purchase Details		Warranty Exp	Purchase Price	Replace Cost	Total Cost	YTD Cost	Budget Cost	Inventory Cost
Vendor	Manufacturer	Install Date	Date					
IBM	IBM	4/7/95	1/29/11	18500.00	23000.00	11234.96	122.00	1250.00

Downtime		Changed By	Changed Date
Asset Up?	Total Downtime		
1	40.5	WILSON	2/9/05 8:01:37 AM

Sub Assemblies		Asset Description	Location	Location Description
23972	Motor- 10hp/1750rpm/TEFC/254T Frame/440v/3ph/60hz	BR431	Motor- 10hp/1750rpm/TEFC/254T Frame/440v/3ph/60hz	

Spare Parts		Quantity	Issued Quantity	Remarks
Item	Description			
12853	Impeller- 4-1/2 Inch Dia	1	0	
20778	Housing- Centrifugal Pump	1	0	
G-1000	Bearing Pillow Block, Fafnir- 1 In ID	2	0	

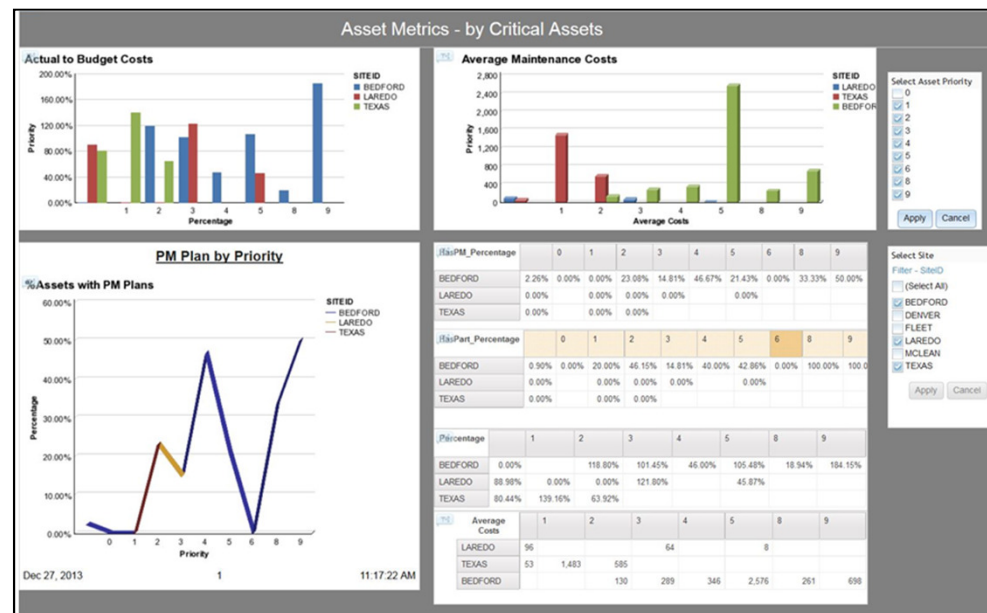
Overwhelming...



# Maximo BI Packs: New Maximo Data Analysis Tool

*SUPPLEMENT* existing Report and Metric Offerings

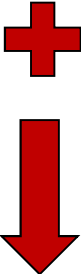
1. Dynamic
2. User Friendly
3. Simplify and organize data



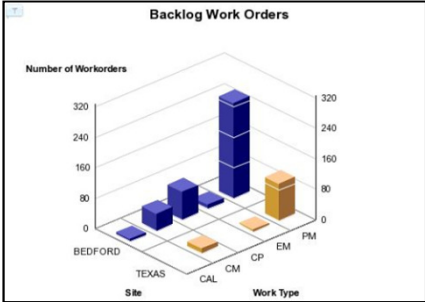


# What is a BI Pack?

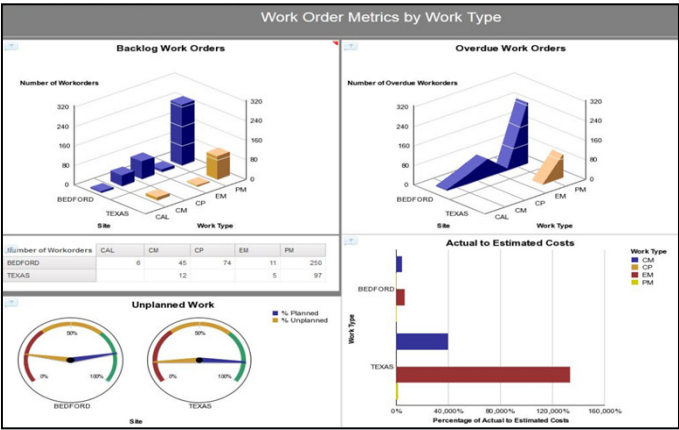
Blank Canvas



Metric Reports

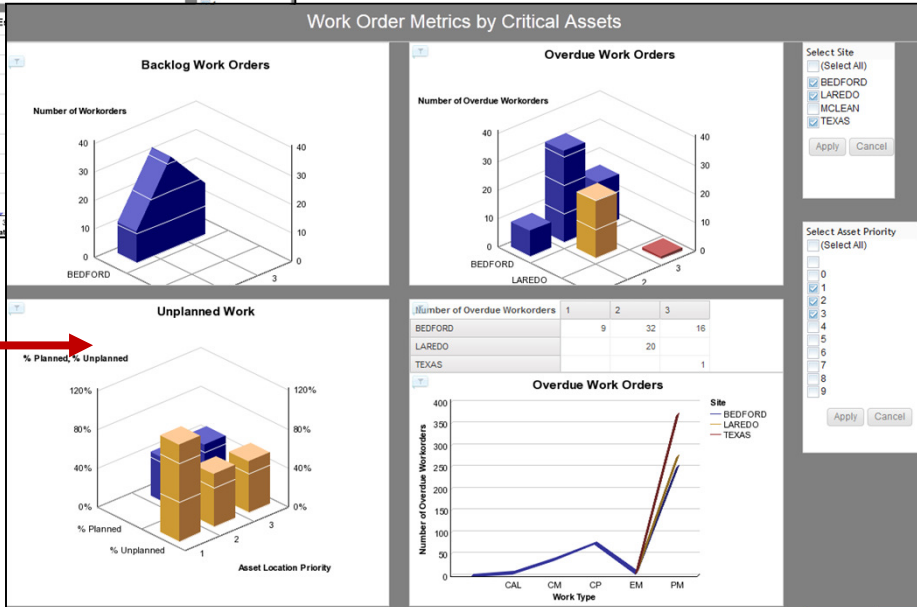
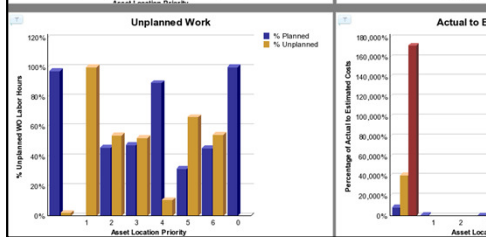
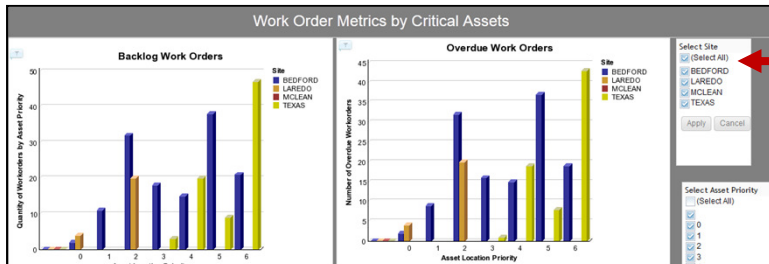


Metric Dashboards

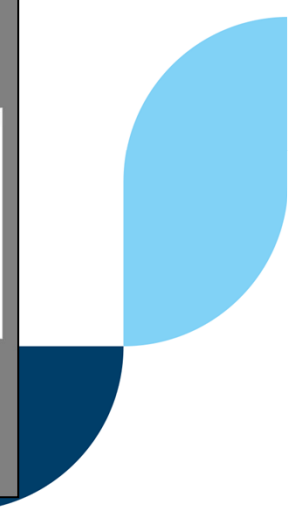


# Maximo BI Packs: *Dynamic*

*Dynamically refresh*  
data utilizing  
filters/parameters



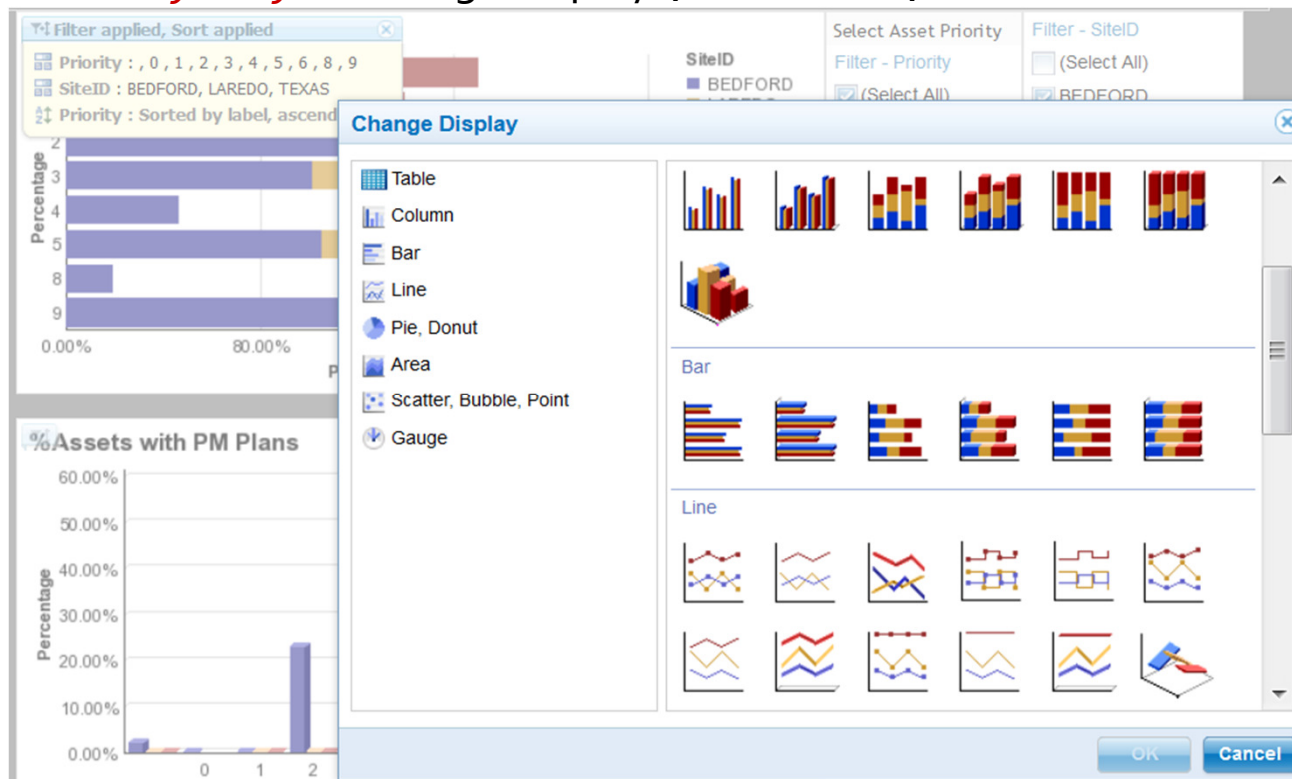
Change Chart Types  
quickly for different,  
individualized *views*  
of data



# Maximo BI Packs: *User Friendly*

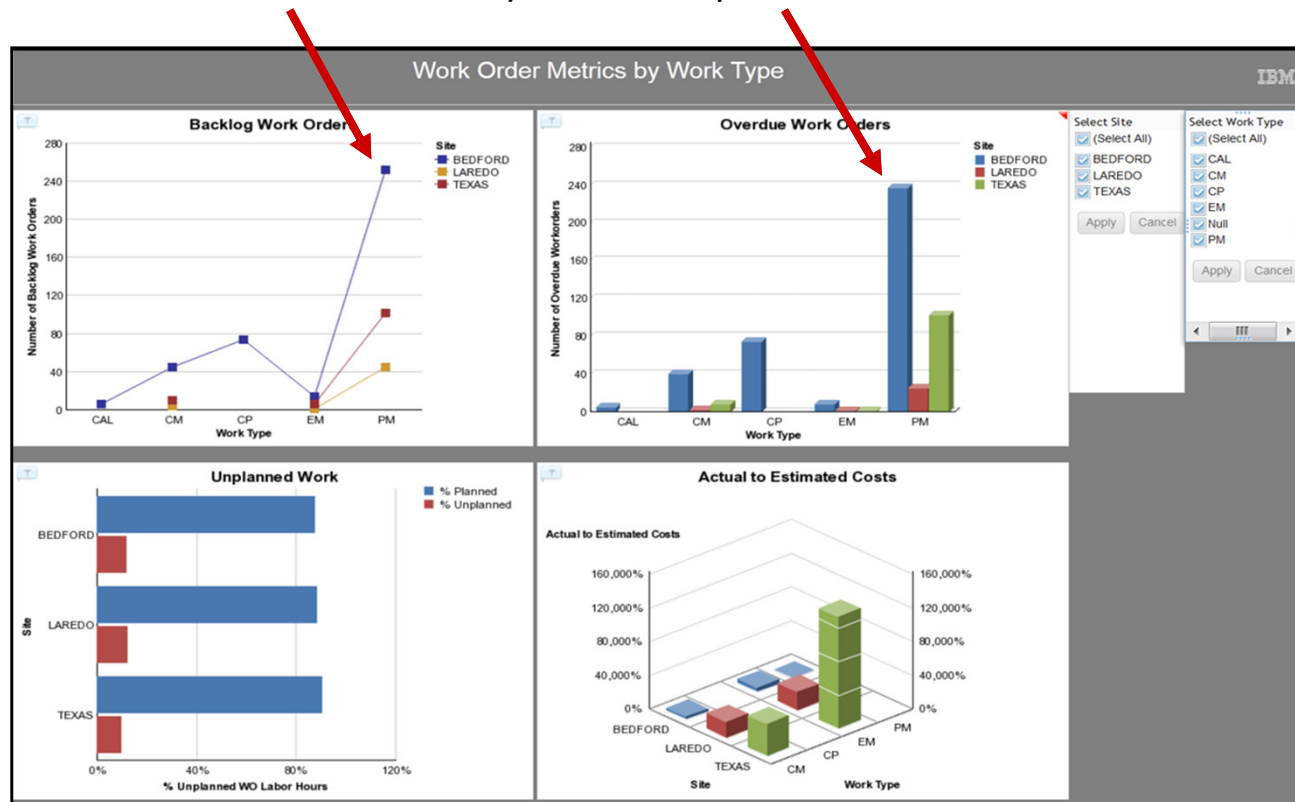
Tool Power User *wants* to use.....

*Very Easy* to change displays, view filters, add content



# Maximo BI Packs: *Simplify and Organize Data*

Attention immediately drawn to problem areas



# Maximo BI Packs: *Content*

## Four Areas of Focus



# Maximo BI Packs: *Content*

## Four Areas of Focus

- Backlog WO
- Overdue WO
- Unplanned WO
- WO Costs

Sept 2013	Dec 2013
Work Order Management	Asset Failure Management
Dec 2013	Mar 2014
Asset Management	Inventory Management

- PM Plans
- Spare Parts
- Avg Maint Costs
- Actual to Budget Costs

- # of Failures
- MTTR
- MTBF
- Asset Availability

- Inventory Turns
- Inventory Currency
- Material Stock outs
- Inactive Inventory



Technology

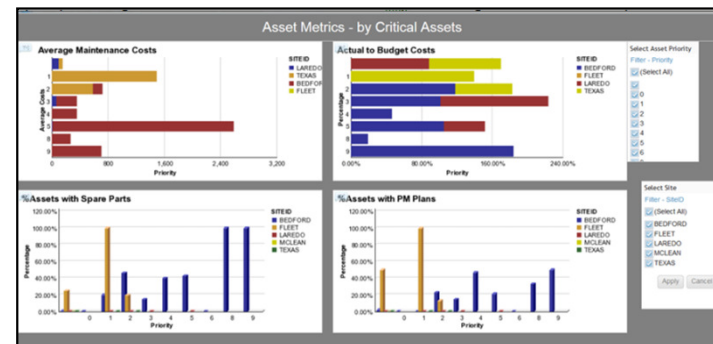
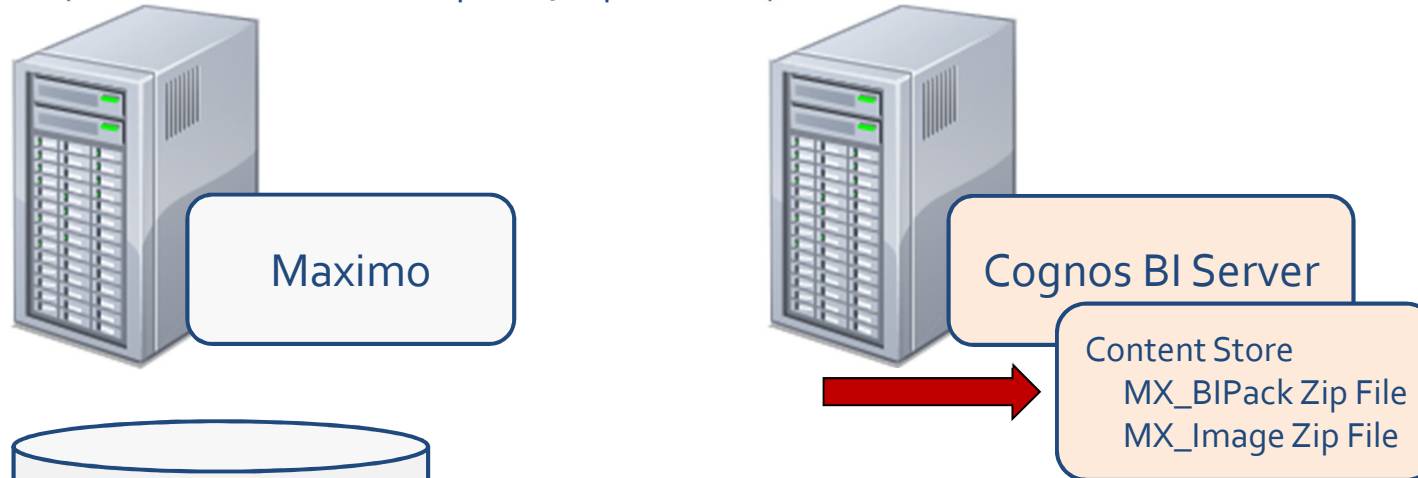
# Technology Components



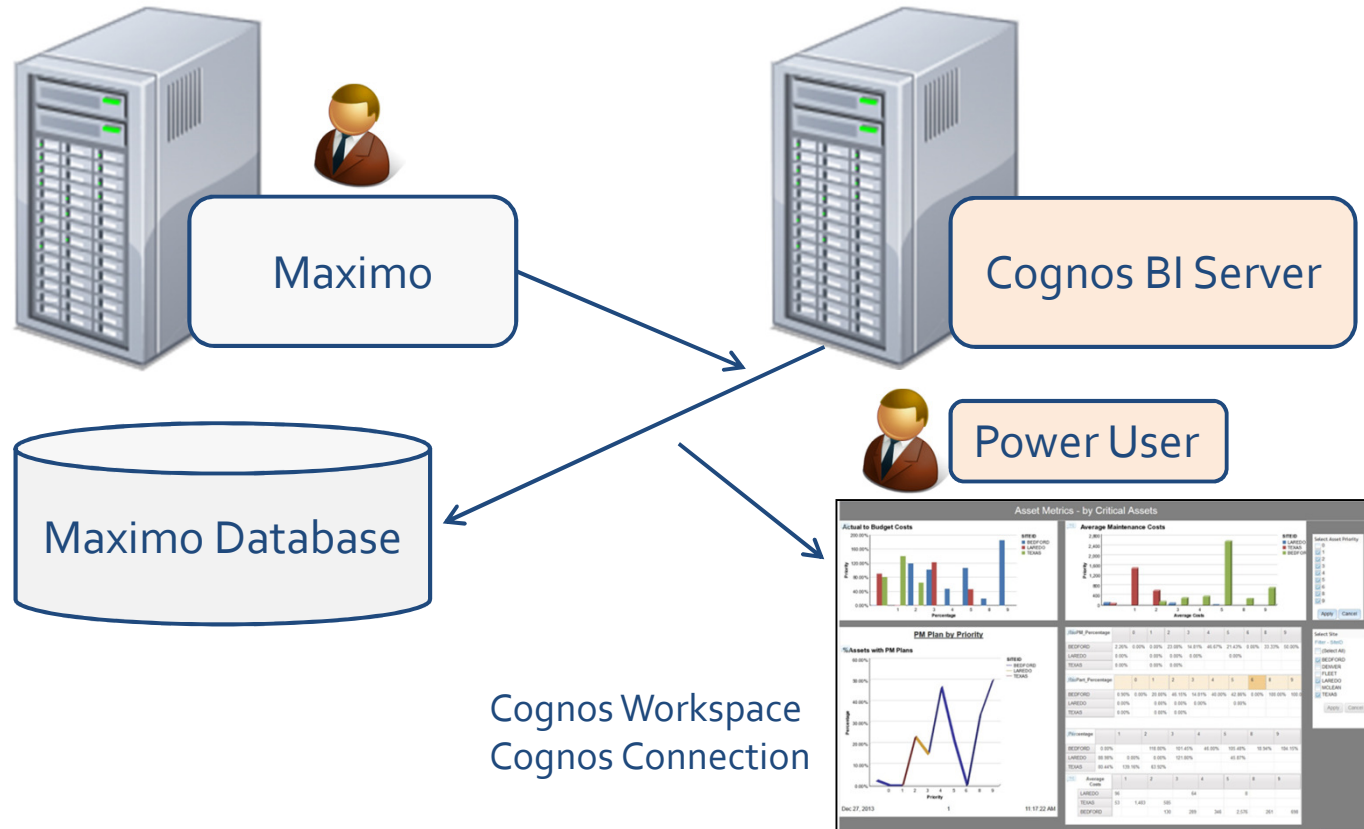


# Technology Components – *BI Packs Installation*









Zip Files contain all workspaces, reports and published meta data.



# Technology Components – BI Packs



# Cognos Products

 <b>Cognos Enterprise</b> Powerful and scalable business intelligence and performance management	 <b>Cognos Express</b> Integrated business intelligence and planning for workgroups and midsize companies
 <b>Cognos Insight</b> Personal analytics for the desktop	 <b>Advanced visualization</b> Bring your data to life in the best format for interpretation and analysis.
 <b>Cognos TM1</b> Planning, budgeting, forecasting, analysis and scorecarding	 <b>Cognos Disclosure Management</b> Reporting and process automation for finance in a controlled, auditable environment.
 <b>Sales Performance Management</b> New compensation plans to drive sales	 <b>Automation and Integration</b> Process automation and data integration for hybrid computing environments.
 <b>Cognos Platform</b> The common foundation for your Cognos software solution	

Maximo utilizes...  
Cognos BI Server (Enterprise)



Power User

Cognos Workspace  
Cognos Connection



Developer

Report Studio  
Cognos Workspace Adv'd



Administrator

Frame Work Manager  
Cognos Administration



## Version support...Maximo BI Packs *Today*

### Today

Maximo 7.5.0.3 or Higher

IBM DB2 Database

Cognos 10.1.1



Client must have their own  
Cognos BI license

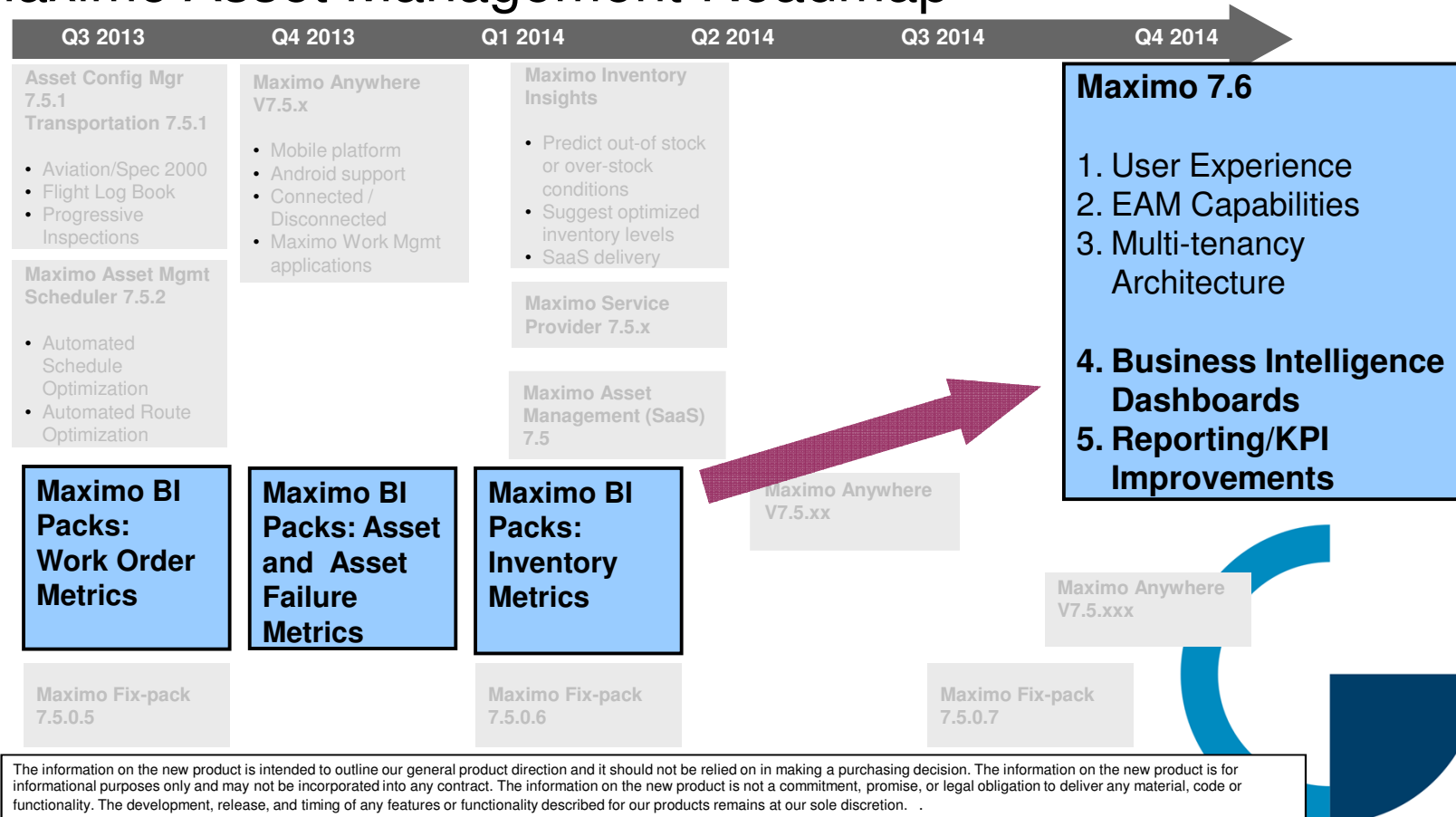


# Version Support.....Maximo 7.Next (December 2014)

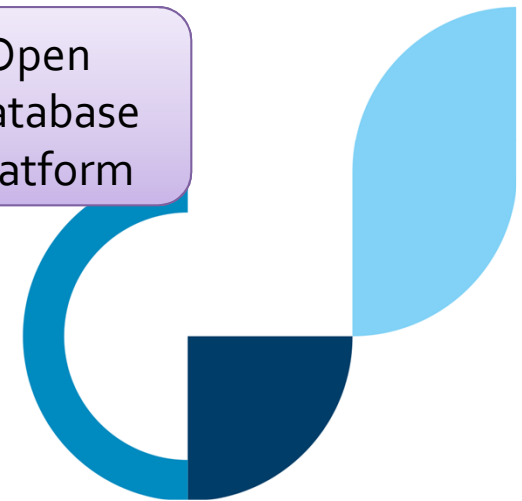
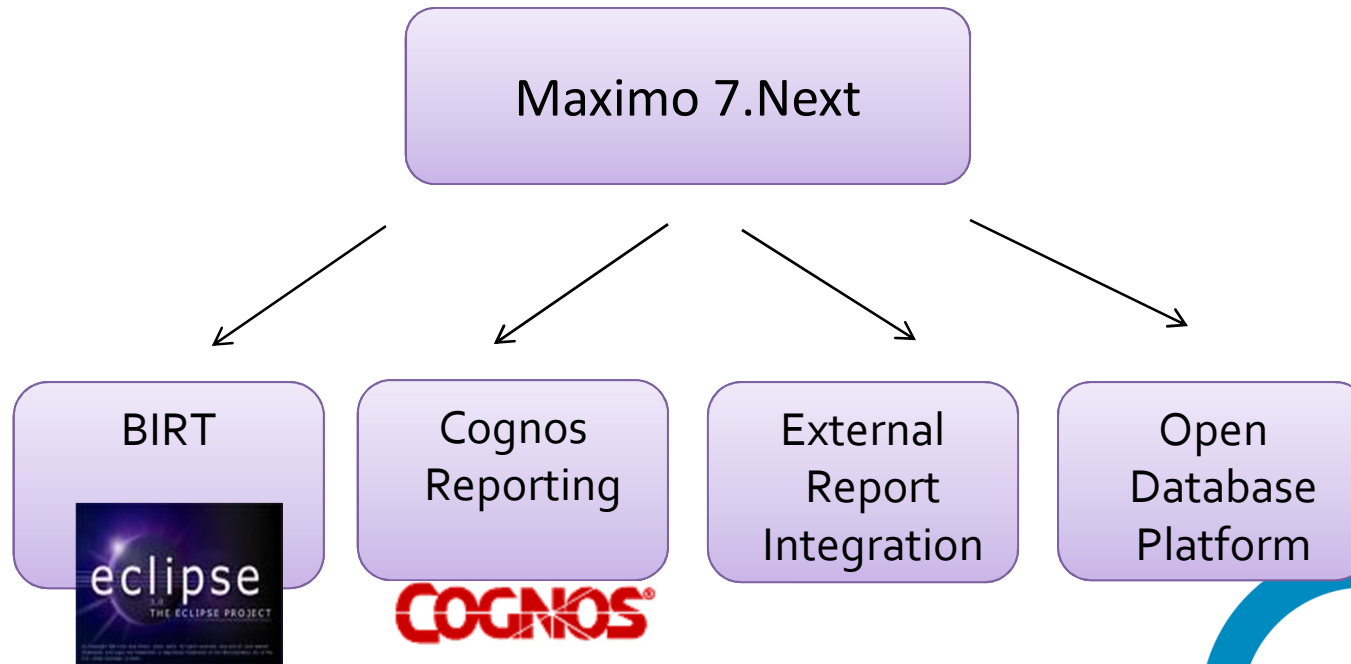


Maximo 7.Next (Preview)

# Maximo Asset Management Roadmap



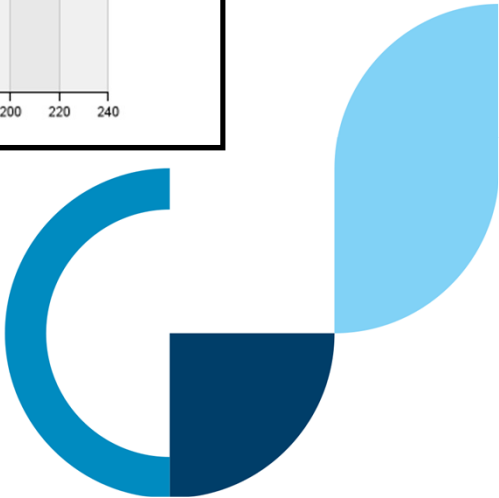
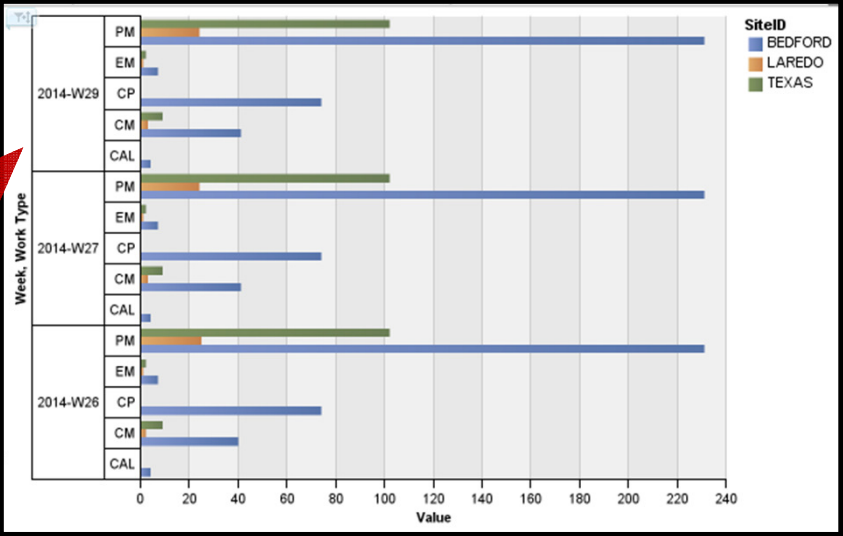
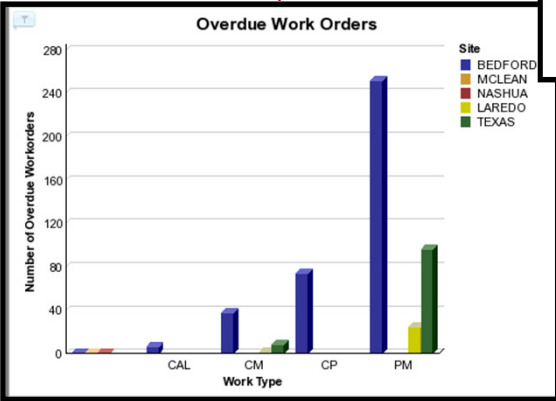
# Open Reporting Architecture Portfolio





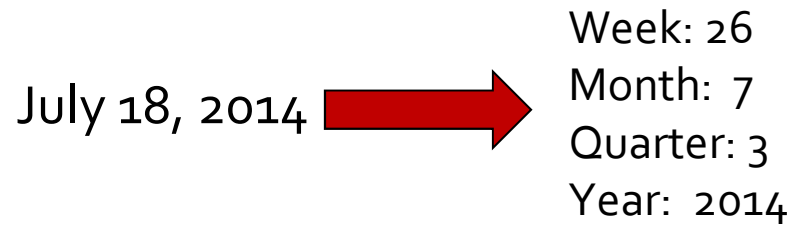
# Maximo 7.Next: Cognos – *Delivered Content*

Existing BI Packs:  
Reports and  
Workspaces

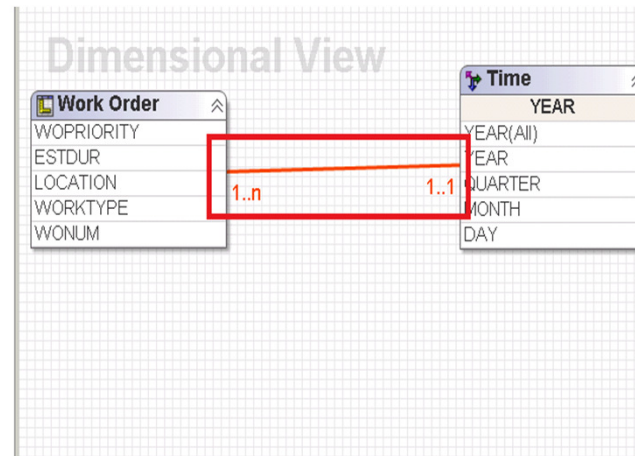
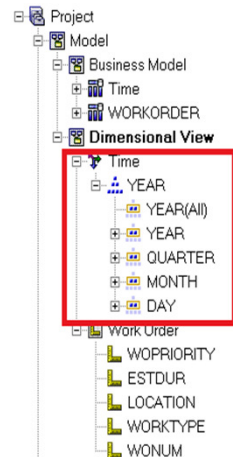


# Maximo 7.Next: Cognos – *Trending*

**Key:** Transpose Maximo Date data

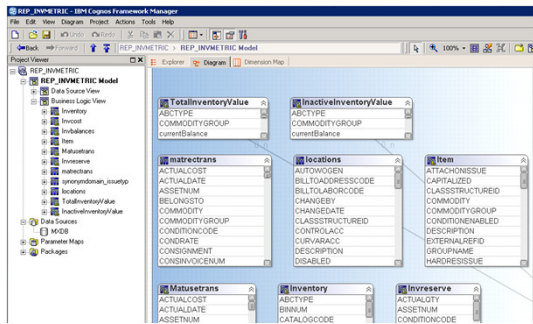


**By:** Applying time Dimensions to *Cognos Meta Data*

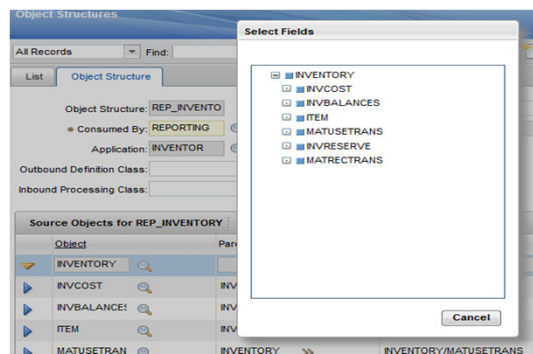


# Maximo 7.Next: Cognos – *Meta Data*

## Cognos Meta Data



Pre-Joined Objects  
for Report Creation

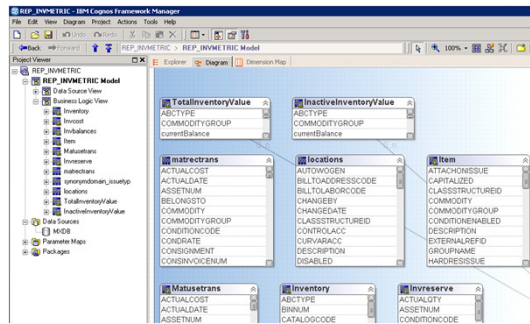


Published from Maximo's  
Object Structure application



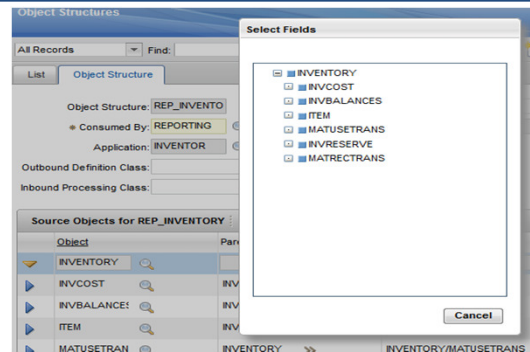
# Maximo 7.Next: Cognos – *Meta Data 7.Next*

## Cognos Meta Data



Pre-Joined Objects for Report Creation

## Site, Org, Set Restrictions



**NEW 7.Next!** Restrictions applied to metadata at publish

User will only see data they have access to

Published from Maximo's Object Structure application

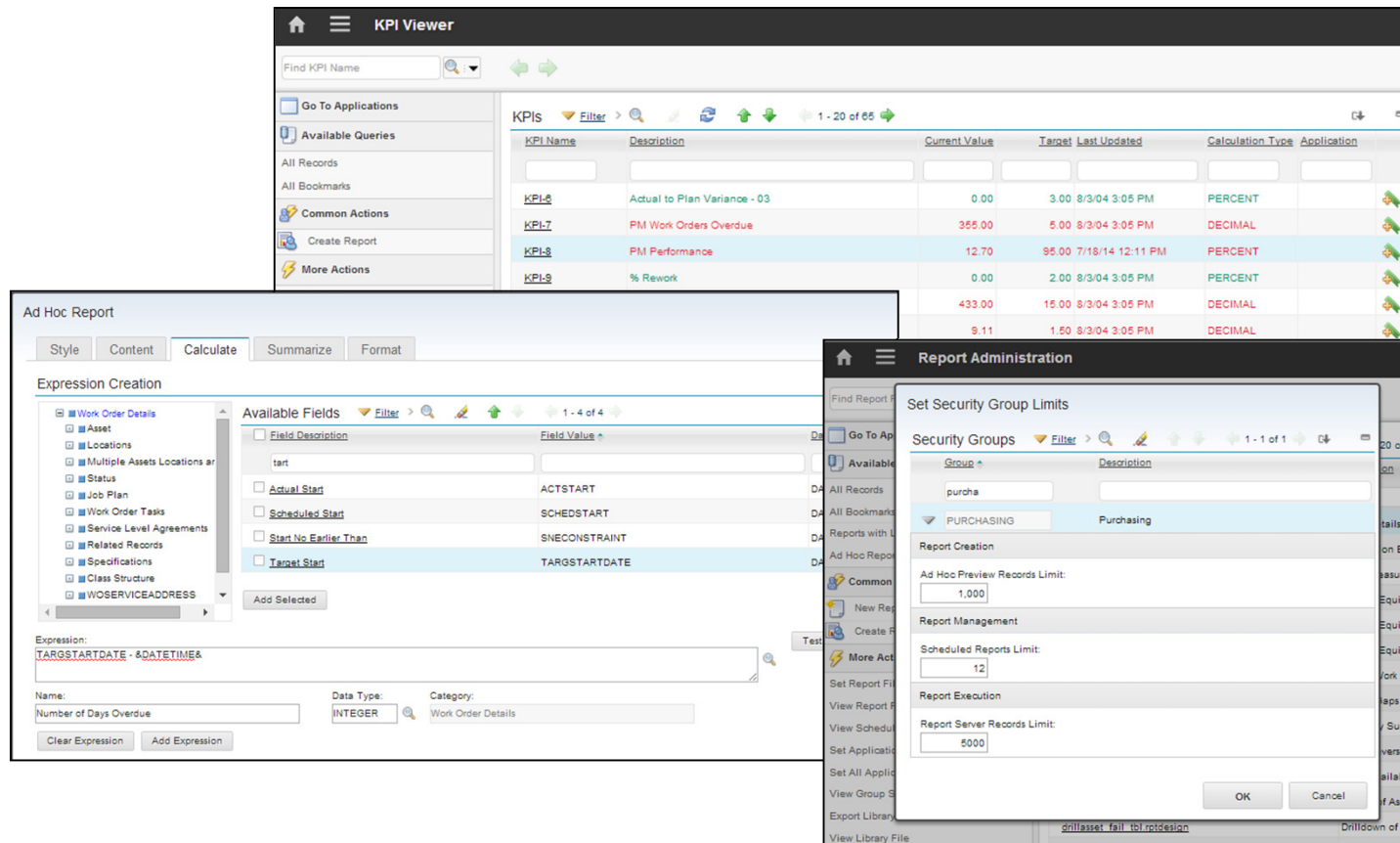


## Maximo 7.Next: Additional BI Features

<b>Ad Hoc</b>	Record Limits	Calculations	Summaries
<b>BIRT</b>	BROS Updates	Upgrade	Performance
<b>Maximo KPI</b>	Templates	Viewer	Scheduling
<b>Cognos</b>	Upgrade	Localisation	Meta data Restrictions
<b>BI Packs</b>	Content	Historical Data	Trending



# Maximo 7.Next: Additional BI Features



The image displays three overlapping screenshots from the Maximo 7.Next interface, highlighting its Business Intelligence (BI) capabilities.

**KPI Viewer:** This window shows a list of Key Performance Indicators (KPIs) with columns for KPI Name, Description, Current Value, Target, Last Updated, Calculation Type, and Application. The data is as follows:

KPI Name	Description	Current Value	Target	Last Updated	Calculation Type	Application
KPI-6	Actual to Plan Variance - 03	0.00	3.00	8/3/04 3:05 PM	PERCENT	
KPI-7	PM Work Orders Overdue	355.00	5.00	8/3/04 3:05 PM	DECIMAL	
KPI-8	PM Performance	12.70	95.00	7/18/14 12:11 PM	PERCENT	
KPI-9	% Rework	0.00	2.00	8/3/04 3:05 PM	PERCENT	
		433.00	15.00	8/3/04 3:05 PM	DECIMAL	
		9.11	1.50	8/3/04 3:05 PM	DECIMAL	

**Ad Hoc Report:** This window shows the 'Expression Creation' process. The 'Available Fields' list includes: Field Description, Field Value, tart, Actual Start (ACTSTART), Scheduled Start (SCHEDSTART), Start No Earlier Than (SNECONSTRAINT), and Target Start (TARGSTARTDATE). The expression being created is: `TARGSTARTDATE - &DATETIME&`. The report is named 'Number of Days Overdue', has a data type of 'INTEGER', and is categorized under 'Work Order Details'.

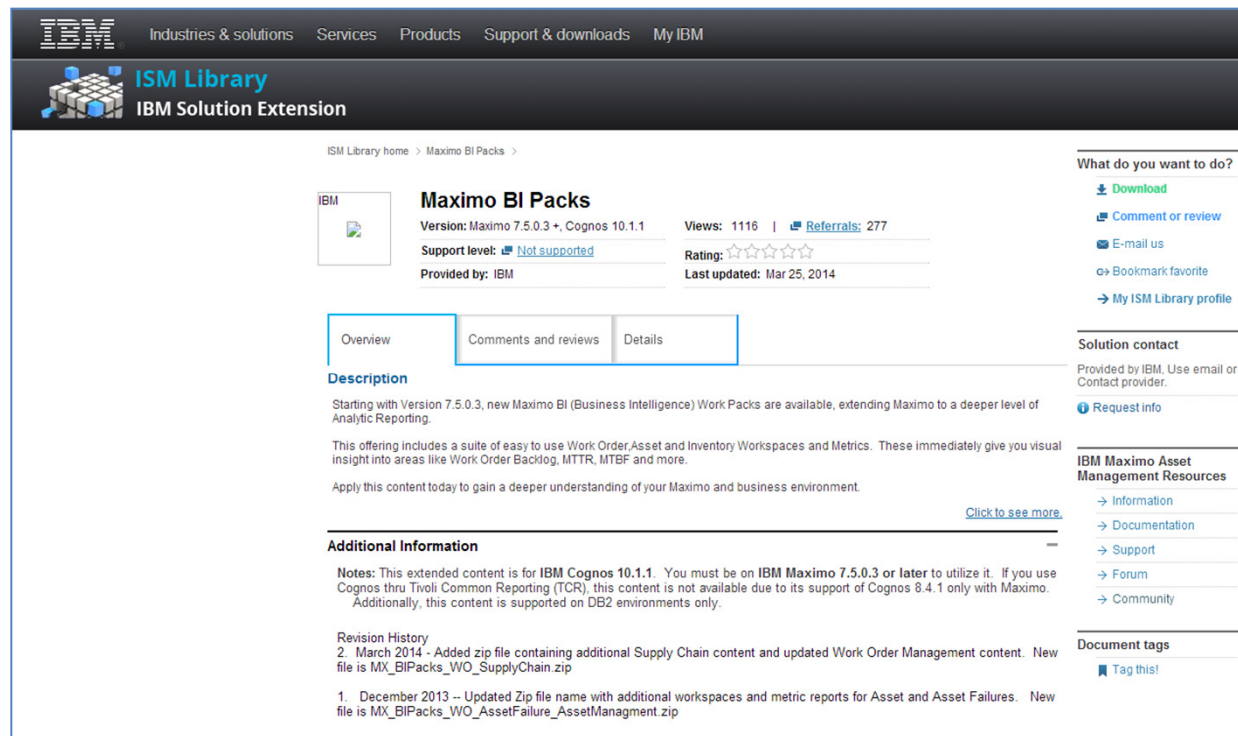
**Report Administration:** This window shows the 'Set Security Group Limits' configuration for the 'PURCHASING' security group. The configuration includes:
 

- Ad Hoc Preview Records Limit: 1,000
- Scheduled Reports Limit: 12
- Report Server Records Limit: 5000

## Reference Materials

# Reference Materials – Content Download

<http://ibm.co/1IEYStx>



The screenshot shows the IBM ISM Library page for 'Maximo BI Packs'. The page includes a navigation bar with 'Industries & solutions', 'Services', 'Products', 'Support & downloads', and 'My IBM'. The main content area features a product card for 'Maximo BI Packs' with details such as 'Version: Maximo 7.5.0.3 +, Cognos 10.1.1', 'Views: 1116', 'Referrals: 277', 'Support level: Not supported', 'Rating: 4 stars', and 'Last updated: Mar 25, 2014'. Below the card are tabs for 'Overview', 'Comments and reviews', and 'Details'. The 'Description' section states that starting with Version 7.5.0.3, new Maximo BI (Business Intelligence) Work Packs are available, extending Maximo to a deeper level of Analytic Reporting. It also includes a 'Click to see more' link. The 'Additional Information' section contains notes about the extended content and its compatibility with IBM Cognos 10.1.1. A 'Revision History' table lists updates from December 2013 to March 2014. On the right side, there are sections for 'What do you want to do?' (Download, Comment or review, E-mail us, Bookmark favorite, My ISM Library profile), 'Solution contact' (Request info), 'IBM Maximo Asset Management Resources' (Information, Documentation, Support, Forum, Community), and 'Document tags' (Tag this).





# Reference Materials – Documentation

<http://ibm.co/INauPI>

IBM® Tivoli® Software

Maximo Asset Management – Version 7.5 releases

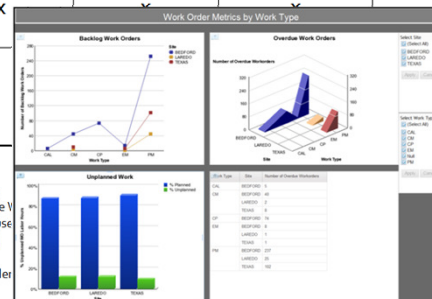
---

Maximo Business Intelligence Work Packs

Workorder, Asset Failure, Asset and In

Revision 4

	Backlog Work Order Metric	Overdue Work Order Metric	Unplanned Work Order Metric	Estimated versus Actual Cost Metric
Work Type Workspace	X	X	X	X
Work Priority Workspace	X	X	X	X
Critical Assets Workspace	X	X	X	X
Classification Workspace	X	X	X	X



**Report Details:**

A work order is overdue under the following conditions

1. It has a work order status of not Closed, Complete or Cancelled.
2. The current date is greater than the Scheduled Finish Date of the Work Order.
  - If the Scheduled Finish date is null, Target Finish date is used.
  - If the Target Finish Date is null, Report date will be used.

Task work orders are not included in this report. Additionally, only work orders with a status of WORKORDER, are included in this query.

The column, Days Overdue, displays on the last column in this report. This value is calculated by subtracting the Work Order's Scheduled Finish Date from the Current Date. If the Scheduled Finish Date is null, the Target Finish date is used. If the Target Finish date is null, then the report date is used.

At the end of the report, the Average Number of Days Overdue is displayed. This is calculated by summing the total Number of Days Overdue, divided by the number of work orders.

**Grouping/Sorting**

The report results are grouped by Site. They are then sorted in descending order of Days Overdue, so you can view and focus on the work orders that have been overdue the longest.

**Parameters:**

Six parameters are available to enable you flexibility in the data that is displayed. These parameters include Work Type, Work Priority, Classification, Asset Priority, Site, and Scheduled Start Date.




# Reference Materials – Wikis, Demo Recordings, BiLoas

<http://ibm.co/1aQV3kC>

BiLog: Views...Introducing Maximo Cognos Analytic Content

PamDenny | Today 2:57 PM | Visits (125) | Like

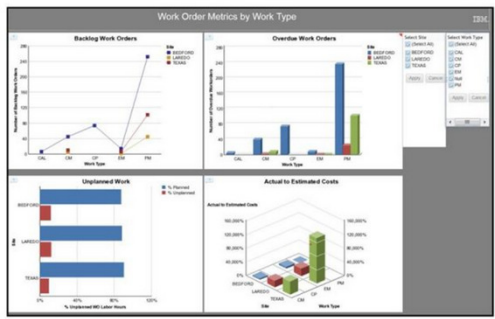


The view is very different at the bottom than the top of the Grand Canyon. Both are magnificent, but offer incredible, varying perspectives on one of the 7 wonders of the world.

The view of your data is very different in Maximo than it is in Cognos. Maximo's very effective Business Intelligence tools, including KPIs, Application Exporting and Reporting, enable operational insight on your data. Cognos offers a very different analytical view on that same Maximo data.

Highlighting Cognos' analytical capability is a new Maximo Offering. This content extends the capabilities of Maximo data analysis by offering six Cognos workspaces and four metric reports. This extended content focuses on Work Management, and provide key metrics on Backlog, Overdue, and Unplanned Workorders along with an analysis on Work Order Costs.

These workspaces and metric reports are intended to highlight non-performing work management areas in business. Their focus is on visual, intuitive, configurable metrics that can quickly be incorporated within the Maximo-Cognos environment. No Maximo code or database modifications are required to utilize this functionality.

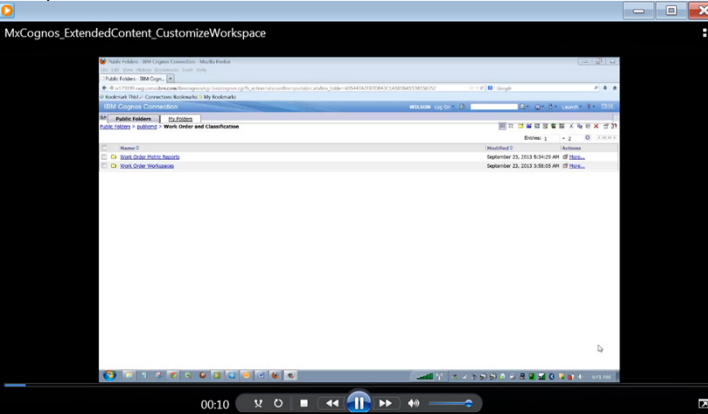


Over the next weeks, we'll explore this content in more detail. In the meantime, you can download the content here

And for additional details on installing this content, along with best practices and multiple recorded videos, access the wiki page here

Tags: analytics metric analysis data kpi maximo workspace cognos

MxCognos\_ExtendedContent\_CustomizeWorkspace



00:10

Work Order Metric Reports

Like | Updated yesterday at 8:01 AM by PamDenny | Tags: analytics, cognos, maximo, metric, report, wo | Add or remove tags

Edit | Page Actions =

In addition to the Work Order Management workspaces, a suite of Work Order Metric reports is also included in this package. These reports provide additional details for each of the metrics. These details include detailed information on the workorders, descriptions, assets, locations, costs and related information. Providing this content in the reports provides the user additional drilldown details if he needs. Additionally, these reports can be scheduled, emailed, printed, saved and exported to additional file formats if required.

Also, these reports can be accessed in a number of different ways depending on the user's need. In addition to executing these directly from within the Cognos Connection, the user can also access these reports from Maximo. They can be accessed from the Report List Portal in the Start Center, from the Work Order Tracking application, or from the Report Action menu. These diverse access points highlight the flexibility and use cases enabled through this functionality.

The 4 Work Order Metric reports delivered in this offering include

- [Backlog Work Order Metric Report](#)

Displays the number of work orders in your backlog, or your current work. This insight on your current workload offers you additional data points which can be used for scheduling and planning purposes.



# Questions

