



Maximo & Tririga Product Roadmap

Dave Gasdia

IBM Tivoli

Sr. Manager, Maximo Strategy and Product Management

Pulse2012

Meet the Experts. Optimise your infrastructure.

May 31 - June 1

Sheraton on the Park Hotel, Sydney



Please Note:

Disclaimer

IBM's statements regarding its plans, directions, and intent are subject to change or withdrawal without notice at IBM's sole discretion.

Information regarding potential future products is intended to outline our general product direction and it should not be relied on in making a purchasing decision.

The information mentioned regarding potential future products is not a commitment, promise, or legal obligation to deliver any material, code or functionality. Information about potential future products may not be incorporated into any contract. The development, release, and timing of any future features or functionality described for our products remains at our sole discretion.

Topics

- Smarter Physical Infrastructure
- Highlights from 2011
 - Development goals
 - Portfolio & Roadmap delivered
 - Intelligent Building Management
 - HS&E
 - BIM Integration
- Roadmap for 2012
 - SmartCloud Control Desk
 - Scheduler
 - Mobile
 - Maximo/Tririga Integration

The replacement value of the world's physical infrastructure is tens of trillions of dollars. We need to more effectively: prescribe, predict, analyze, and understand

Business



Businesses depend upon infrastructure to meet their goals and improve bottom line results

People



People depend on infrastructure to live their lives and pursue their dreams

Society



Societies depend upon infrastructure to care for their citizens

Smarter Physical Infrastructure

Today's progressive global organizations are:

- Transitioning to smarter, flexible infrastructures
- Enabling more intelligent enterprise assets
- Delivering insight, recommendations, performance, and optimization across their organization



Design & Build



Operate



Manage & Maintain

Transform Your Business Operations



Key Capabilities

IBM Asset and Facilities Management

- Deep enterprise asset management functionality provided for key industries
- Extended capabilities bring specific asset knowledge that enhances baseline EAM functionality
- Integrated set of technologies to reduce facility operational costs, manage real estate assets, and meet energy efficiency regulatory drivers.





2011 Highlights and Delivered Products

Maximo Development Objectives

• Development Principles: Customer Value

- Enhance Maximo best-in-class capabilities and solutions
- Drive innovation with input from customer groups, advisory councils and business partners
- Continue to produce High Quality products; leverage customer input during every step of the development cycle
- Protect customer investment; upgrades to future Maximo versions
- Commit to Open Standards: J2EE, SOA
 - both IBM and non-IBM platform components

• Development Focus

- Continue to Enhance Version 7 core capabilities, architecture, platform and technology
- Incremental Features and Value-add capabilities to extend Version 7
- Expand deep Industry Solution functionality and new Growth areas such as:
 - Intelligent Buildings
 - Safety, Risk and Compliance
 - Facilities Management/Space Planning
- Leverage IBM products and technology

Maximo and TRIRIGA Solutions

Core Solutions

Stand-alone solutions for asset, facility and real estate management.



Industry Solutions

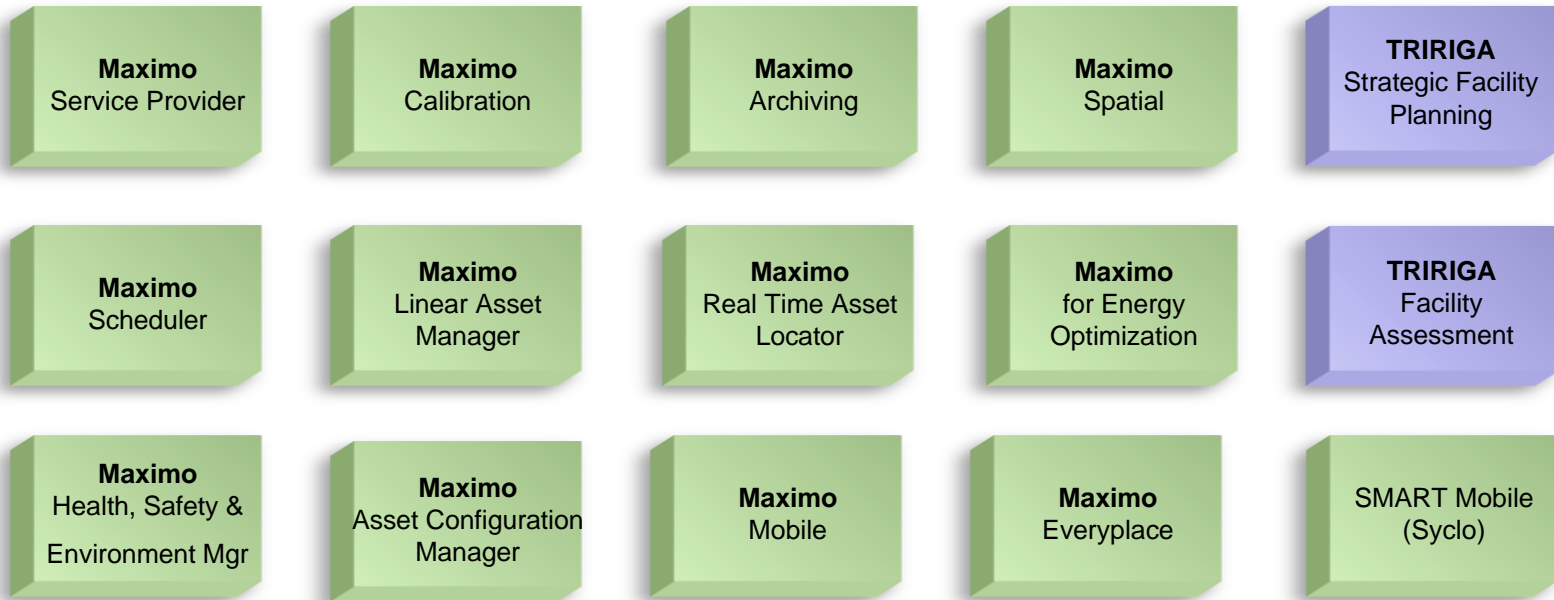
Industry-specific capabilities for the unique requirements of asset-intensive industries.



Maximo and TRIRIGA Solutions

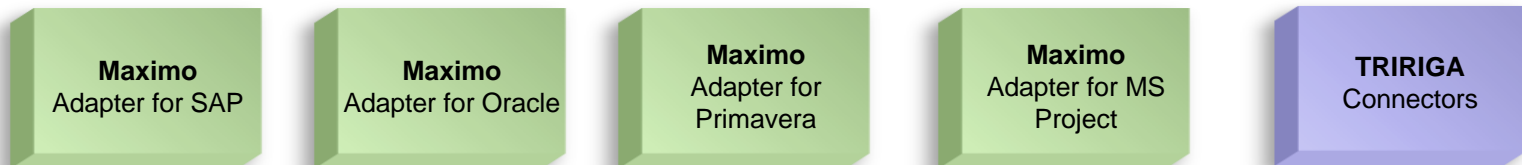
Add-on Solutions

Additional options, used with core or industry solutions, provide deeper functionality for specific needs.

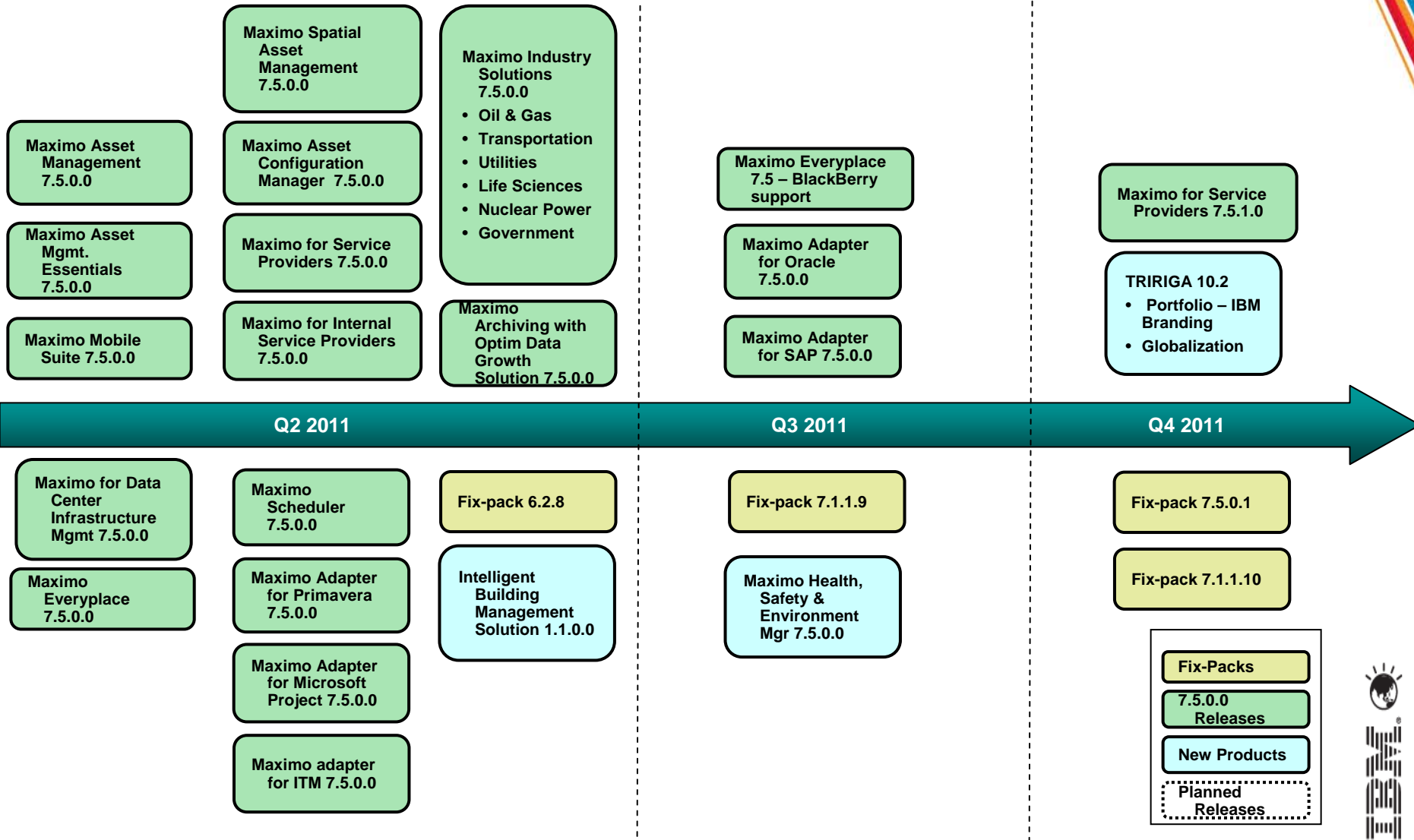


Integration Adapters

Commercially-supported integration to other enterprise and 3rd party systems.



2011 Asset Management Products - Delivered



The information on the new product is intended to outline our general product direction and it should not be relied on in making a purchasing decision. The information on the new product is for informational purposes only and may not be incorporated into any contract. The information on the new product is not a commitment, promise, or legal obligation to deliver any material, code or functionality. The development, release, and timing of any features or functionality described for our products remains at our sole discretion.

Feature Enhancements to Maximo 7.5

Important new enhancements have been added to base Maximo to extend core functionality, provide additional value, improve customer satisfaction and deliver innovation through new capabilities

Focus	Feature
Enhanced User Functionality	<ul style="list-style-type: none">• New supply chain management: Inventory/receiving• Enhanced supply chain management:<ul style="list-style-type: none">– PO/PR/RFQ/Invoicing• Enhanced work and asset management<ul style="list-style-type: none">– Hard/soft reservations– Linear Asset Visual Control– Repair Facilities– more
Improved cost of ownership	<ul style="list-style-type: none">• Automation scripts• Application data import/export• Enhanced Migration Manager• Expanded Reporting capabilities• Usability and performance
Expanding the base	Calibration and Scheduler add-on code included in base, simplified installation <ul style="list-style-type: none">– Asset Templates– Job Plan Revisioning– PM Forecasting– SLA Manager
Platform Currency	OS: Windows, Linux, Unix DB: DB2, Oracle, SQL Server WS: WebSphere, Weblogic Browser: Firefox, IE



Maximo 7.5 - Expanded Footprint

Asset Management	Work Management	Materials Management	Purchasing	Contract Management	Service Management
Locations • Repair Facilities Asset • Asset Templates Failure Codes Linear Assets • Visual Control Condition Monitoring Meters Meter Groups	Job Plans • Revisioning Routes Service Requests Work Order Tracking • Assignment Tab • Hard/Soft Reservations • Repair Facilities Safety Quick Reporting Labor/Crafts Tools Preventive Maintenance • PM Forecasting Master PM Assignment Manager	Item Master Storerooms Inventory • Inventory Usage • LIFO/FIFO Costing • Consignment • Transfer via Shipment • Default Costing Condition Codes Stocked Tools Service Items	Request for Quotation Receiving Receiving Inspections • Shipment Receiving Purchase Requisitions • Invoices • Invoice Reversals Purchase Orders • Revisioning • Receipt Tolerance Desktop Requisitions	Purchase Contracts Master Contracts Warranty Contracts Lease/Rental Contracts Labor Rate Contracts • Premium Pay Rates Payment Schedules	• Service Groups • SLA Management Change Management • Incidents • Problems • Changes • Releases • Solutions

Enhanced Workflow – Event Driven, Context-based / Escalation Manager

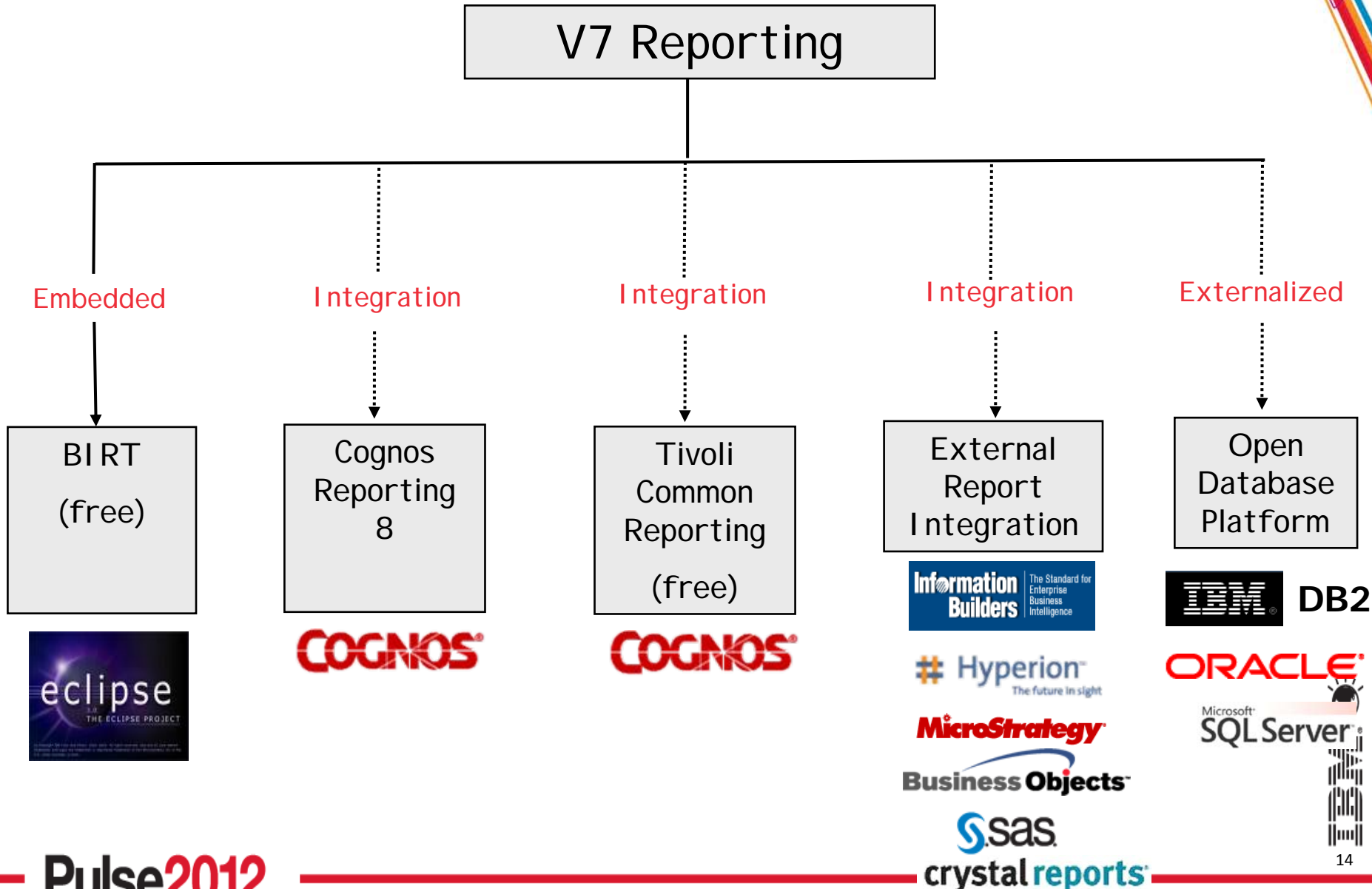
KPIs / Reporting/ Ad-hoc Reporting / Cognos Integration

Security/Administration/Configuration – Automation Scripts, Migration Manager

Integration/Web Services – Import & Export direct from applications



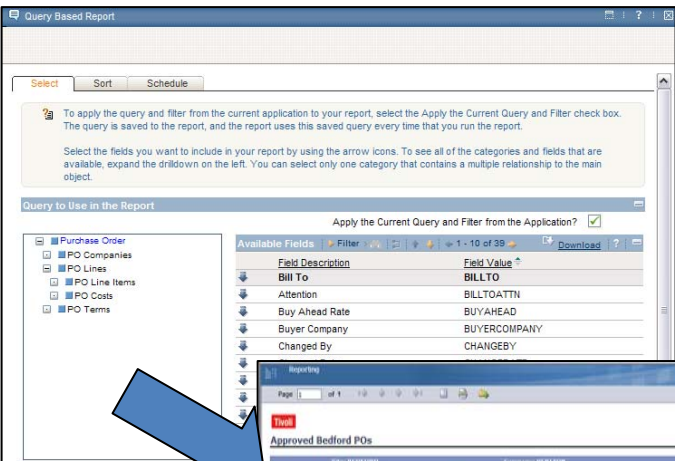
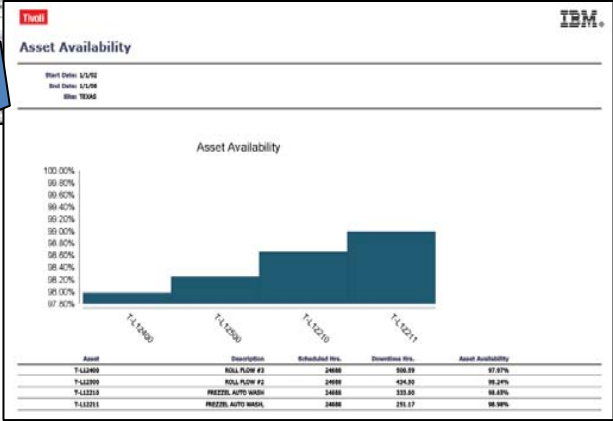
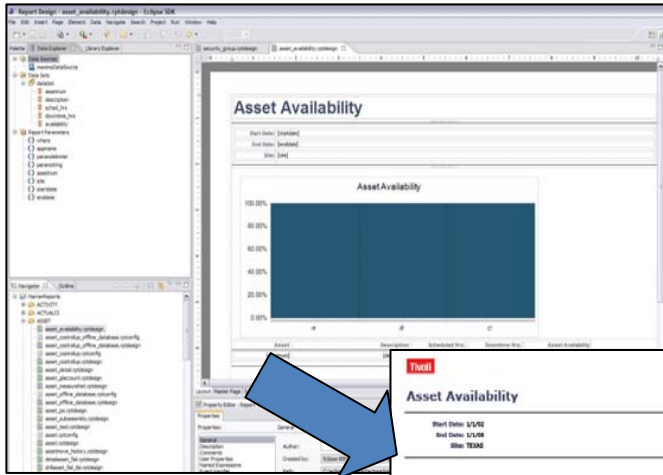
Maximo Open Report Architecture



Types of Core BIRT Reports Available

Enterprise, Formatted Reports for *Heavy, Multi-User* Access

Ad Hoc, Dynamic Reports for *Individual* Use



PO	Description	Status	Follow-up Date	Total Cost	Line	Line Type	Item	Item Type	Item Description	Quantity	Line Cost
1084	Vergen Order	WAFR		153.00	1	MATERIAL				100.00	100.00
1083	Langkahn Project Adm	WAFR		136.43	1	ITEM	360-00	ITEM	Fulmig-Copper 1 In ID	100.00	149.00

- Created in BIRT Report Designer
- Requires Database/Java Skills
- Fixed Content/Format

- Created on Fly
- No Database/Java Skills Needed
- Variable Content/Format



Maximo Health, Safety & Environment Manager 7.5

Best practices for improving HS&E, reliability and quality

- *Integrating health, safety and environmental processes with work and asset management*

Highlights

- Best in class capabilities and best practices for improving safety, reliability, and compliance
- Facilitates meeting or exceeding regulations and legislated requirements impacting health, safety and the environment.
- Standardization is the basis for measuring, benchmarking and continuously improving performance
- Collaboration across operations, engineering, maintenance and management enables operational efficiencies and better practices for HS&E management
- Enterprise scale, comprehensive solutions for improving compliance activities in a risk-based, safety and quality oriented environment

– The primary objective of Health, Safety, and Environment (HS&E) initiatives is to reduce overall risk, to comply with Federal, State and Local regulations, and to create a safe yet efficient operating environment for a company.

– Maximo's solution for Health, Safety, and Environment provides key extensions to Maximo Asset Management to provide strategic applications for incident reporting, audit management, risk assessment, safety reporting, management of change, condition reporting, corrective actions and training.



IBM Intelligent Building Management 1.1

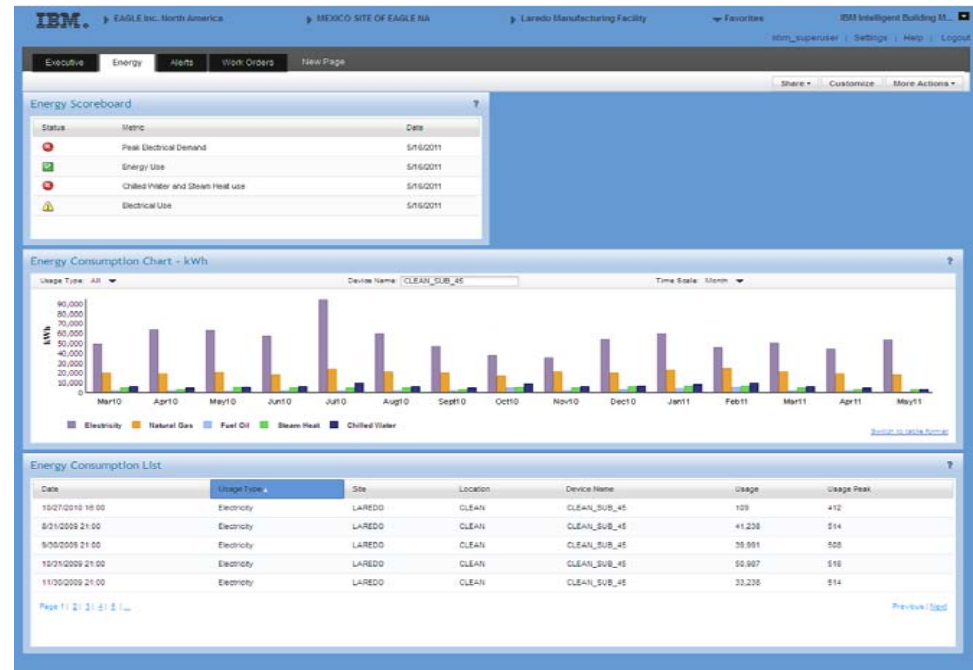
- *Integrated software solution for improving buildings management and facilities operations*

Highlights

- Lower building operating cost by consolidating building information and by performing analytics to identify energy optimization opportunities
- Improve facility operations by analyzing real-time equipment alerts and automated service requests to more efficiently service key building equipment
- Gain flexible enterprise, regional and building-specific views of energy trends, alerts and facilities operations across the building portfolio and building management systems
- Extend the life of building assets through proactive maintenance enabled by real-time condition monitoring
- Provide a consolidated role-based dashboard for one stop view of building operations

– IBM Intelligent Building Management is an integrated software offering that [combines real-time systems monitoring with facilities and event management](#) to help analyze and optimize facilities operations, reduce energy expense, and improve asset management and reliability

– The solution gives building owners and managers the ability to collect vital real-time energy and operational metrics, apply [enterprise-wide analytics](#), and view that data in a cohesive dashboard to support optimization capabilities.



Integrated Workplace Management Solution

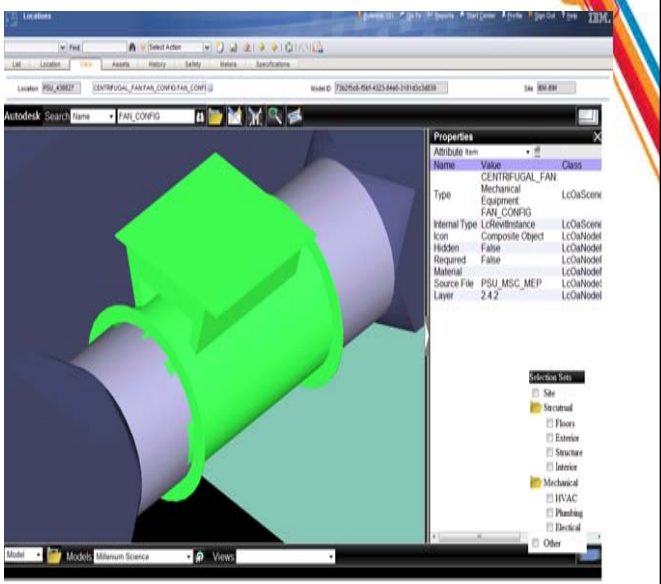
Addresses critical processes for the total life cycle of a building from construction, design, and project management to leasing, portfolio management, maintenance management, space management, energy and environmental sustainability and asset disposition.

- IBM re-branding, Open source remediation and 3rd party contracts
- Introduction of BIRT reporting
- New language support for French, Spanish, Italian and Brazilian Portuguese
- Functionality within Real Estate to accommodate new FASB/IASB accounting rules.

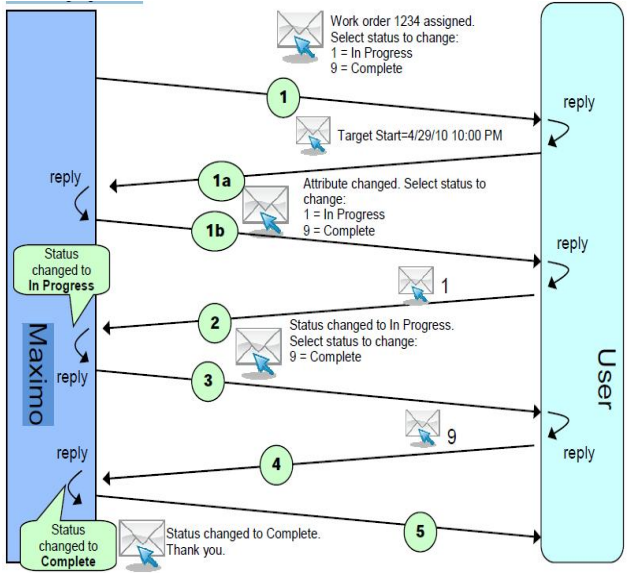


ISM Library deliverables – Free downloads

- Maximo Extensions for Building Information Models (BIM)
 - Building Information Models (BIM) is an industry representation of the building which is used during the design and build phases of building construction. This package allows the automatic loading of the data in the BIM model into Maximo to begin the process of maintaining the building.
 - Quickly and accurately import Asset and Location data into a Maximo hierarchy using the COBie standard
 - Requires Autodesk Navisworks License for visualization



<https://www-304.ibm.com/software/brandcatalog/ismlibrary/details?catalog.label=1TW10MA44>



- Maximo for Email
 - Enables E-mail Interaction with Maximo. An application and set of corresponding utilities and templates that allow Maximo record information to be emailed to a Maximo user, and updated via the edited reply.
 - Addresses email record 'Approval' status changes via BlackBerry and other email capable devices
 - Will be included in Maximo, initially with fix pack 7.5.0.3

<https://www-304.ibm.com/software/brandcatalog/ismlibrary/details?catalog.label=1TW10MA37>

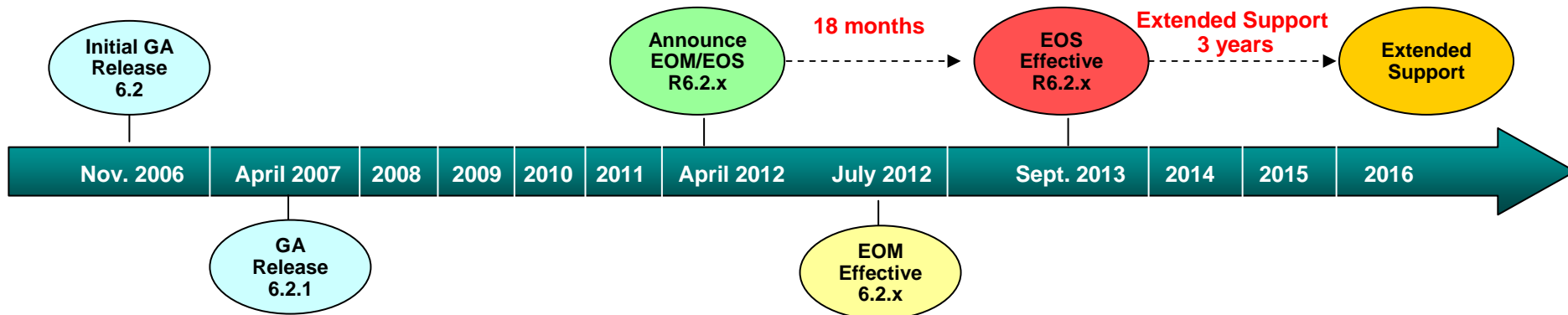
* Requires Maximo Users license



2012 Roadmap and Planned Deliverables

End of Support Announcement – Maximo Release 6.2.x

- Announced End of Market & End of Support: [April 10th, 2012](#)
- Withdrawal from Market effective: [July 10th, 2012](#)
- End of Service effective: [September 30th, 2013](#)
- Extended Support available for 3 additional years: [September 2016](#)



- IBM Software Support Lifecycle Support policy:
 - <http://www-01.ibm.com/software/support/lifecycle/lc-policy.html>
- IBM Support Lifecycle list of Maximo Products:
 - <http://www-01.ibm.com/software/support/lifecycleapp/PLCSearch.wss?q=Maximo&scope=G821126W33273S39&ibm-view-btn.x=14&ibm-view-btn.y=12&ibm-view-btn=Search&sort=P>



2012 Asset Management Product Roadmap In-process

2012 Focus:

- Address high-value customer requirements across multiple industries and markets with delivery of new solution for advanced Scheduling, Dispatch & Routing of work
- Enhance existing Maximo, TRIRIGA and ISM solutions
- Continued maintenance for multiple releases, delivering Fix-packs for R6.2.x, 7.1.x and 7.5.x

Maximo Adapter for SAP
Fix-pack 7.5.0.1

Maximo
Fix-pack 7.5.0.2

TRIRIGA 10.2
- Additional Languages

Advanced Scheduling

Fix-pack 7.5.0.3

- Features:
- Crews
- Public Map API
- Service Addresses

Maximo Scheduler 7.5.1.0

- Schedule Compliance
- Graphical Labor Assignments
- Dispatching
- Additional Resources
- WO Actions

Maximo

Fix-pack 7.5.0.4

- Rolling Upgrade
- High Availability

TRIRIGA 10.3

- Reservation Mgmt
- Sustainability enhancements
- Building System Integrations

Maximo Industry Solutions and Add-On's 7.5.x.0

Maximo 7.5.x.0

- Multi-Tenancy
- Linear Enhancements
- Supply Chain

Maximo Industry Solutions and Add-On's 7.5.x.0

Maximo Scheduler 7.5.x.0

- Schedule and Route Optimization

H1 2012

H2 2012

H1 2013

Smart Cloud Control Desk 7.5

IT Asset Mgmt

Service Mgmt

Change Mgmt

Maximo
Fix-pack 7.1.1.11

Maximo Service Provider
Fix-pack 7.5.1.1

Maximo for Utilities
Fix-pack 7.5.0.1

Maximo for Spatial
Fix-pack 7.5.0.1

Maximo Nuclear 7.5.1.0

- LCO Tracking
- Duty Stations

Maximo Mobile 7.5.1.0

- Platform Cert.

Maximo-TRIRIGA Integration

- Capital Project Mgmt
- Space & Move Mgmt

Maximo
Fix-pack 6.2.9

Smart Cloud Control Desk 7.5.x

Maximo
Fix-pack 7.1.1.12

Maximo
Fix-pack 7.5.0.5

Key

Fix-Packs

7.x.0.0 Releases

New Products

Planned Releases

The information on the new product is intended to outline our general product direction and it should not be relied on in making a purchasing decision. The information on the new product is for informational purposes only and may not be incorporated into any contract. The information on the new product is not a commitment, promise, or legal obligation to deliver any material, code or functionality. The development, release, and timing of any features or functionality described for our products remains at our sole discretion.

Maximo/Tivoli Process Automation Engine (Tpae) Fixpack Roadmap

Function in a fix-pack

- Tpae 7.5.0.1 Function in FP – **Oct 2011**
 - WCAG 2.0 accessibility compliance
 - Client-side validation (ITD driven)
 - VMMSync incremental synchronization for LDAP
 - REST API
 - SEF remediation
- Tpae 7.5.0.2 Function in FP – **Mar 2012**
 - Enhancements and enablement support for SCCD 7.5
 - Platform currency (WAS 8)
- Tpae 7.5.0.3 Function in FP – **Jul 2012**
 - Enablement support for Scheduler 7.5.1
 - OSLC consumer support
 - Integration 'Maximo for Email'
 - Platform currency (FF4, FF10, IE9, BIRT 3.7, Cognos 10)

Fixes Only

- Tpae 7.1.1.11 FP – **Jul 2012**
 - Defect fixes only; no new function
- Tpae 7.5.0.4 FP – tentatively **Nov 2012**
 - Defect fixes only; no new function
- Maximo 6.2.9 FP – tentatively **Dec 2012**
 - Defect fixes only; no new function

SmartCloud Control Desk – delivered March 14, 2012

• Next Generation Service and Asset Mgmt Product Evolution

Why is this important to customers?

- Dramatic usability enhancements including left navigations, simplified applications, and consistency across apps
- Service management across IT and non-IT assets facilitated by asset/CI convergence
- Broadest set of options in the industry allows customer to move b/w cloud, private cloud, or traditional deployment
- Key enhancements in all process areas

Supports seamless business processes according to user maturity

Next Generation Service And Asset Mgmt

SmartCloud Control Desk 7.5

Full service management solution

- Service Desk
- Service Catalog
- Change Mgmt
- Config Mgmt
- Release Mgmt
- IT Asset Mgmt
- Procurement Mgmt
- Software License Mgmt
- Automation across processes
- Single platform
- Single install
- Single maintenance stream

Current product model oriented by silos based on business process and user type

TAMIT 7.2.1

TSRM 7.2.1

CCMDB 7.2.1

TRPM 7.2.1

Maximo Scheduler 7.5.1 – Enhanced capabilities

- **Schedule Compliance**

- How is my Schedule performing?
- Quickly identify Work orders that are running late
- In progress and scheduled but not started
- Identify the cascading effect of delayed work orders
- Reschedule pending work orders by CPM or via manual edits

- **Graphical Labor Assignments**

- Assign people/crews to work order / tasks
- Drag & Drop assignments
- Complements Assignment Manager
- Similar business rules as the Assignment Manager

- **Change Status and Other Actions**

- Can select multiple work orders and change the status
- Create Job Plan, Follow up Work Orders, etc.

- **Additional resources will also be shown in the Gantt:**

- Tools (both rotating and non rotating)
 - Show required vs available, similar to crafts
- Materials
 - Indicate in green reserved items that are in stock
 - Show required vs available for non reserved items
- Assets
 - Show maintenance window
- Locations
 - Show maintenance window

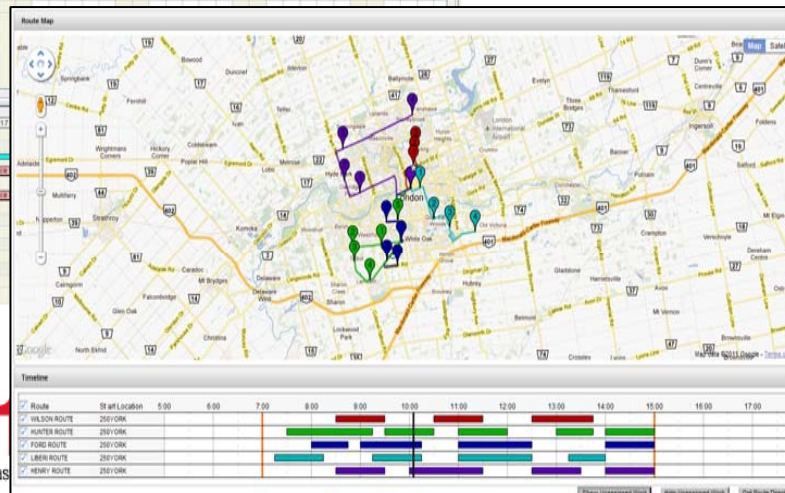
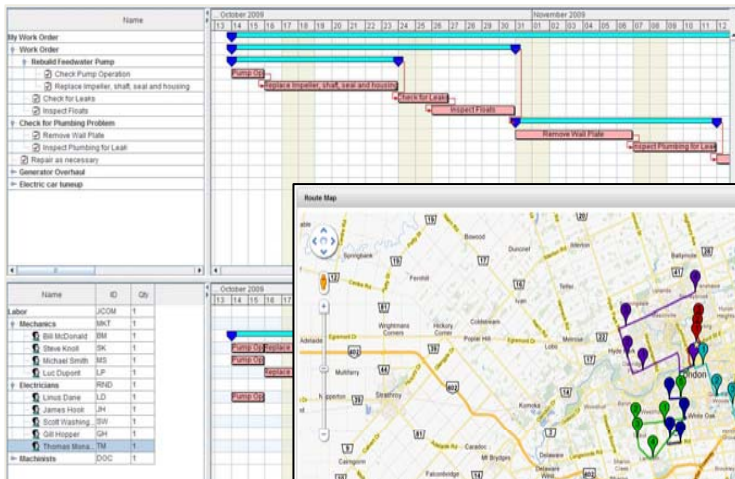
- **Dispatching**

- After Labor assignment, Dispatch work to the field technicians
- Public Maps, geographical display of work

- **Resource Leveling and Optimization (Q1 2012)**

Optimal work schedule based on resource availability, time constraint and other user defined objectives like minimize cost, schedule emergency work first

Will use iLog CPLEX optimization engine



Maximo/Tririga Integration Work

- Assumptions
 - Supports existing Maximo user scenarios
 - Deliver a solution that allows for customers to be up and running quickly
 - Support latest versions of Maximo and Tririga (currently 7.5 & 10.2/3.2)

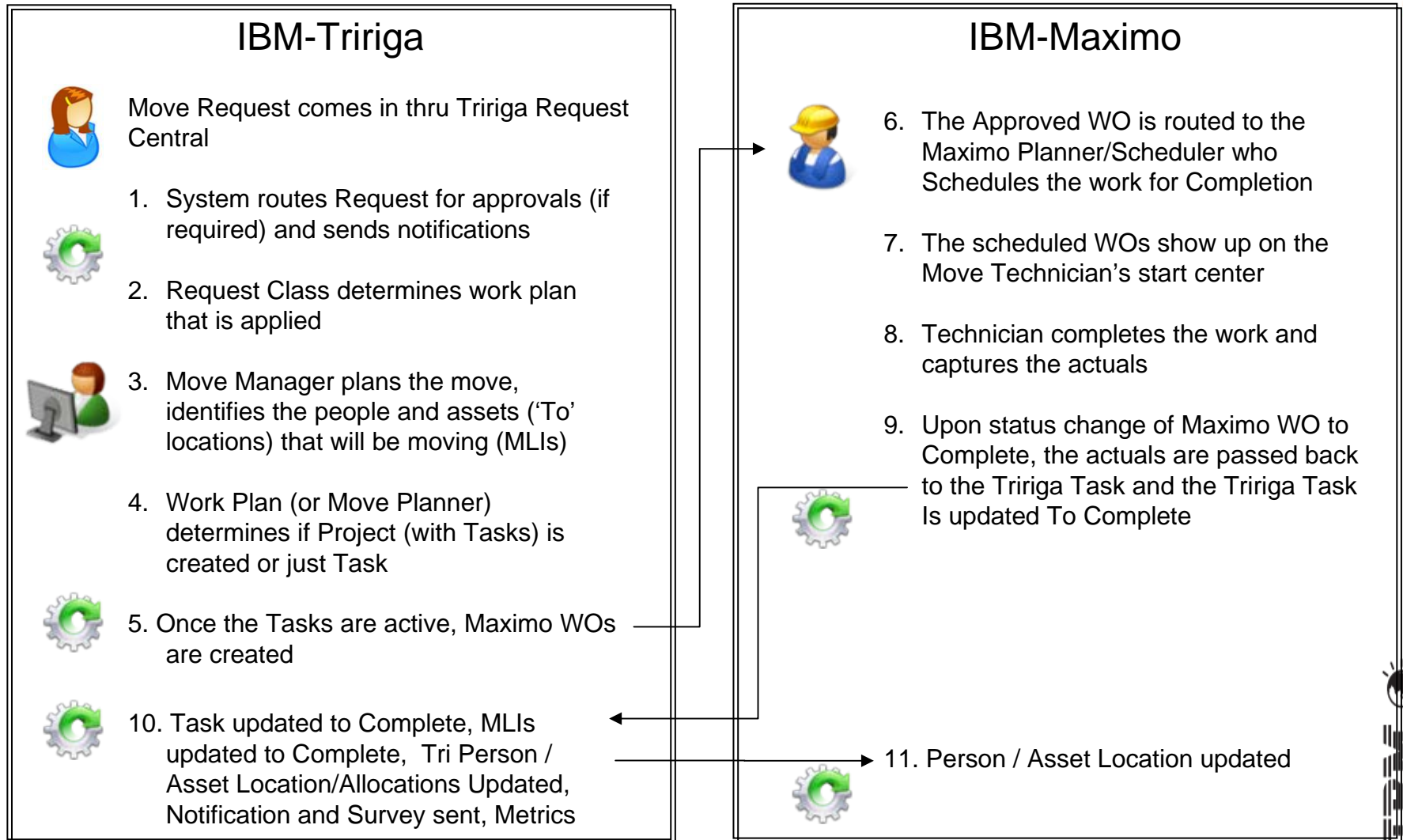
Description	Focus on Space Management	Focus on Space Mgmt and Capital Projects	Expanded use cases: Space Management Capital Projects TREES/RE/Other
Technical	Several pieces to apply various aspects. DB Scripts/UI/Code	Install Package applies changes to both Maximo and Tririga	All pieces included with either Maximo Asset Management or Tririga install. Administrative switches to enable features
Delivery	Template Solution	Supported ISM Library deliverable (no charge) Requires some services effort	Embedded in Core solutions: Maximo 7.5.x Tririga Facilities/ Capital Projects/etc. 10.3.x



Maximo Tririga Integration - Space Management

- Space/Move Management & SFP processes remain in IBM-Tririga
 - Transaction integration point between the systems is the Task = WO

4Q 2012



IBM Maximo Mobile Suite

IBM Maximo Mobile Suite brings Maximo to remote workers in the field, wherever they are, regardless of connectivity, and helps them do their tasks with information in hand.

**IBM Maximo Mobile Work
Manager**

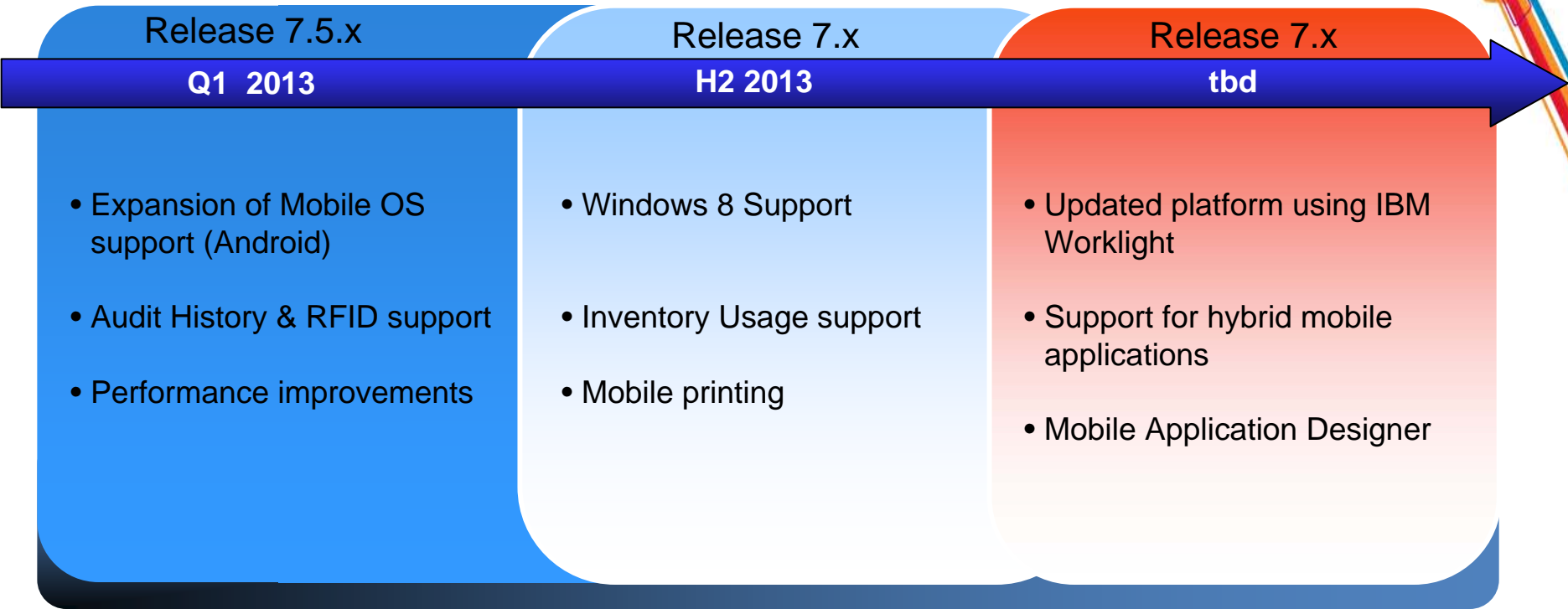
**IBM Maximo Mobile Inventory
Manager**

**IBM Maximo Mobile Asset
Manager**



- **Work Order Management**
- **Operator Rounds**
- **Inspection**
- **Facilities Maintenance**
- **Service Desk**
- **Inventory Management**
- **Asset Inventory & Audit**

Maximo Mobile Roadmap



Maximo Everyplace Roadmap

Maximo Everyplace Work Mgmt Scheduler Applications

- field technician templates designed to hasten the day to day tasks of the Crew or Tradesperson
- Public Map, directions, visibility of nearby trades people or crews
- Route optimization



Do you have an Enhancement Request for Maximo?

http://www.ibm.com/developerworks/rfe/?BRAND_ID=90

IBM. English DaveGasia

developerWorks. Technical topics Evaluation software Community Events Search developerWorks

developerWorks > RFE Community > Tivoli >

Tivoli RFE Community

Welcome Tivoli users! Here you have an opportunity to collaborate directly with the Tivoli product development teams and other product users.

- ➔ [Search for RFEs](#) (view, comment, vote, and watch)
- ➔ [Submit RFEs](#)
- ➔ [Track your RFEs](#) (My RFEs)

Release plans (Pilot)

Now you can track upcoming product release plans through the release cycle, plus you can comment and rate planned items along the way.

- ➔ [IBM open service delivery platform](#)
- ➔ [IBM SmartCloud Application Performance Management](#)
- ➔ [IBM Tivoli Monitoring](#)
- ➔ [Tivoli Business Service Manager](#)
- ➔ [Tivoli Workload Automation](#)

Spotlight

- ➔ [Announcements](#)
- ➔ [Give us your feedback](#)

Brands

- All brands
- Information Management
- Rational
- Tivoli
- WebSphere

Customize this page for your favorite product:

Maximo Asset Management (MAM)

Welcome Maximo Asset Management (MAM) users

Select a Maximo Asset Management (MAM) view. The related RFEs will be displayed in the list to the right.

- Top 20 watched RFEs
- Top 20 voted RFEs
- Submitted RFEs
- Planned RFEs
- Delivered RFEs

Maximo Asset Management (MAM): Top 20 watched RFEs

- [Allow credit card statements/invoices to be proces...](#)
- [Address unassigned lines on Purchase Requests and ...](#)
- [Classification Search on Application List Screen](#)
- [manual input node enhancements on workflow](#)

Latest RFE submitted

Product: Maximo Asset Management (MAM)

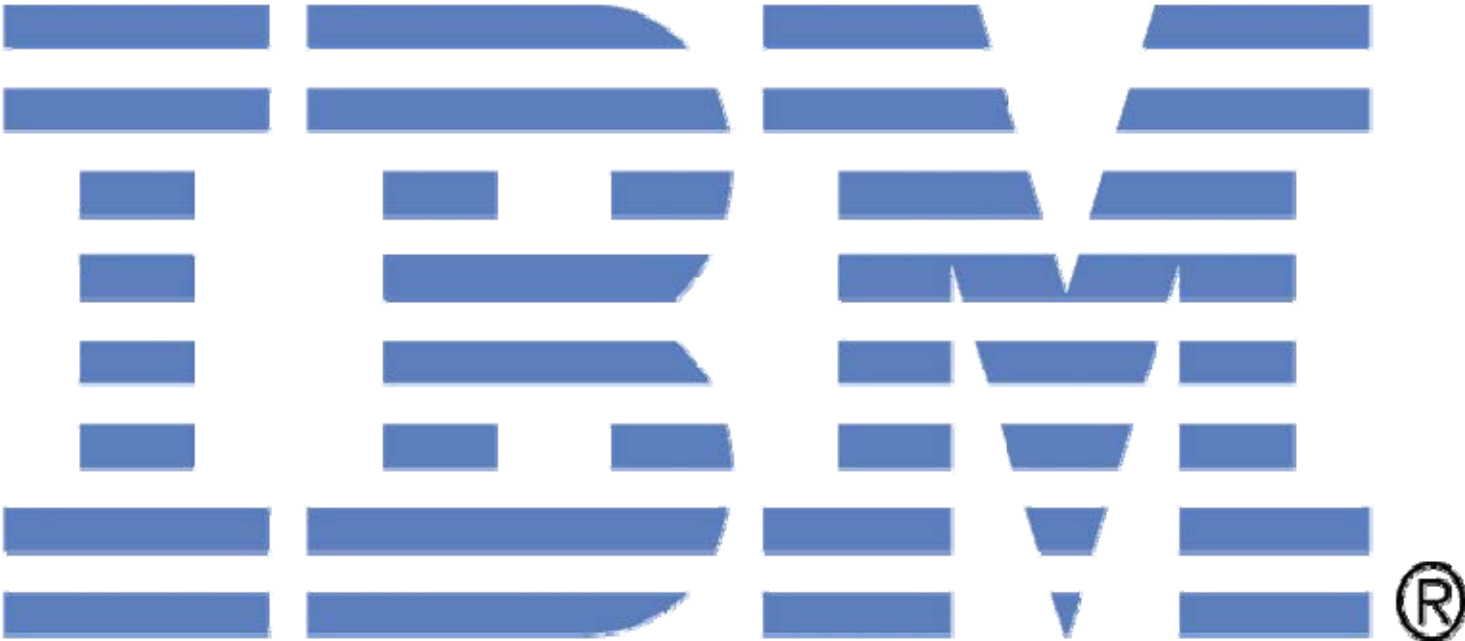
Headline: [Location Meter rollout](#)

Submitter's display name: MichaelMarsonet

- [IBM's latest RFE response](#)
- [RFE with most votes](#)
- [Most watched RFE](#)

Consumability survey

Thank You....



Trademarks and disclaimers

© Copyright IBM Australia Limited 2012 ABN 79 000 024 733 © Copyright IBM Corporation 2012 All Rights Reserved. TRADEMARKS: IBM, the IBM logos, ibm.com, Smarter Planet and the planet icon are trademarks of IBM Corp registered in many jurisdictions worldwide. Other company, product and services marks may be trademarks or services marks of others. A current list of IBM trademarks is available on the Web at "Copyright and trademark information" at www.ibm.com/legal/copytrade.shtml

The customer examples described are presented as illustrations of how those customers have used IBM products and the results they may have achieved. Actual environmental costs and performance characteristics may vary by customer.

Information concerning non-IBM products was obtained from a supplier of these products, published announcement material, or other publicly available sources and does not constitute an endorsement of such products by IBM. Sources for non-IBM list prices and performance numbers are taken from publicly available information, including vendor announcements and vendor worldwide homepages. IBM has not tested these products and cannot confirm the accuracy of performance, capability, or any other claims related to non-IBM products. Questions on the capability of non-IBM products should be addressed to the supplier of those products.

All statements regarding IBM future direction and intent are subject to change or withdrawal without notice, and represent goals and objectives only. Some information addresses anticipated future capabilities. Such information is not intended as a definitive statement of a commitment to specific levels of performance, function or delivery schedules with respect to any future products. Such commitments are only made in IBM product announcements. The information is presented here to communicate IBM's current investment and development activities as a good faith effort to help with our customers' future planning.

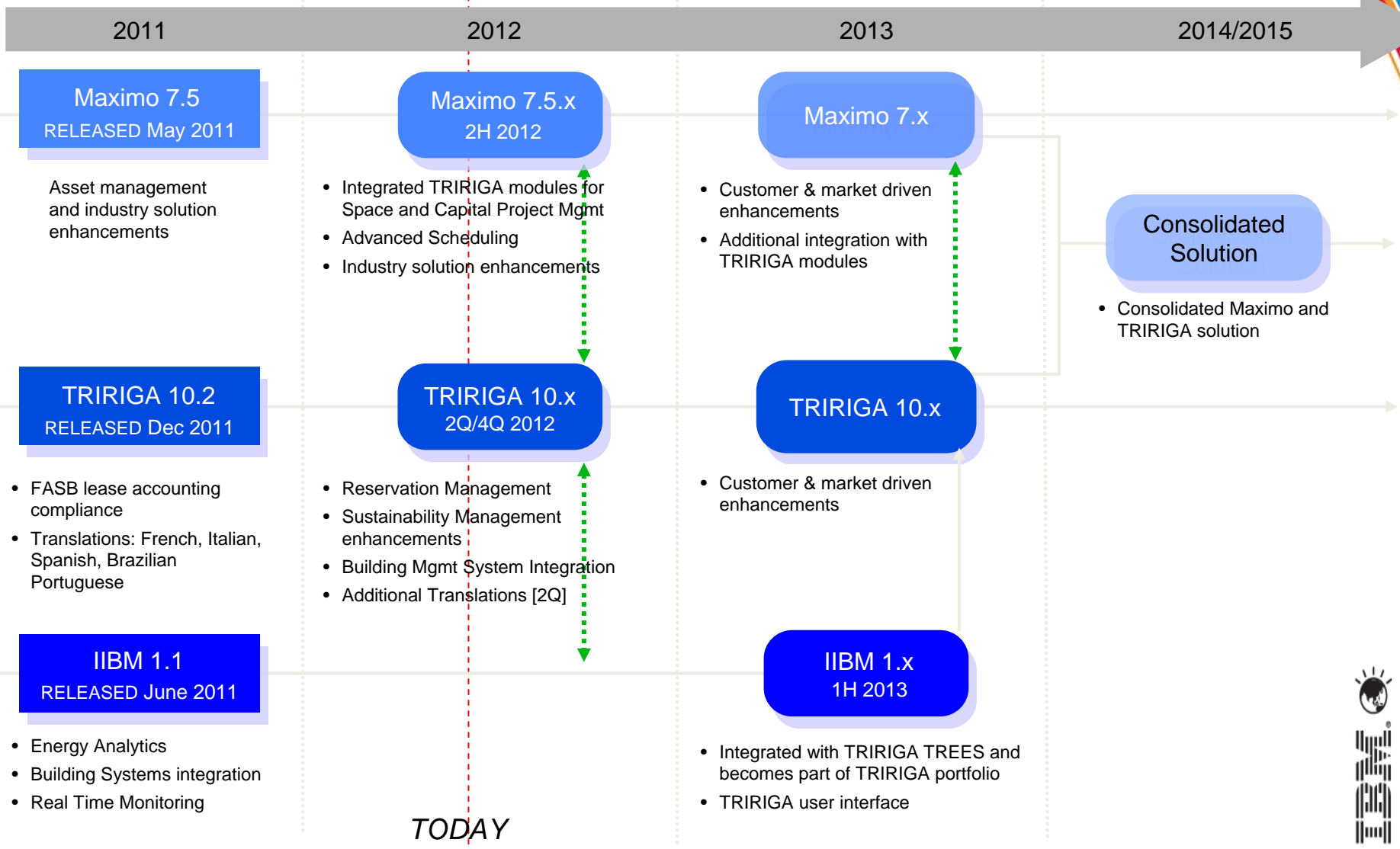
Performance is based on measurements and projections using standard IBM benchmarks in a controlled environment. The actual throughput or performance that any user will experience will vary depending upon considerations such as the amount of multiprogramming in the user's job stream, the I/O configuration, the storage configuration, and the workload processed. Therefore, no assurance can be given that an individual user will achieve throughput or performance improvements equivalent to the ratios stated here.

Prices are suggested U.S. list prices and are subject to change without notice. Starting price may not include a hard drive, operating system or other features. Contact your IBM representative or Business Partner for the most current pricing in your geography.

Photographs shown may be engineering prototypes. Changes may be incorporated in production models.



Product roadmap for facilities, real estate, energy and environmental sustainability



The information on the new product is intended to outline our general product direction and it should not be relied on in making a purchasing decision. The information on the new product is for informational purposes only and may not be incorporated into any contract. The information on the new product is not a commitment, promise, or legal obligation to deliver any material, code or functionality. The development, release, and timing of any features or functionality described for our products remains at our sole discretion.



DeveloperWorks - Asset Management Blogs

<https://www.ibm.com/developerworks/mydeveloperworks/blogs/a9ba1efe-b731-4317-9724-a181d6155e3a/?sortby=0&page=0&maxresults=15&lang=en>

IBM English Sign in (or register)

developerWorks. Technical topics Evaluation software Community Events Search developerWorks

Browse Blogs My Blog My Updates New Entry

Asset Management

Connect, learn, and share with the experts

analysis asset-management bi bilog data
eam ibmeam maximo performance qbr
report reports tivoli v7 v76

ALL POSTS Date Most Recommendations Most Comments Most Visits

Keeping your Maximo Tuned Up and Performing

TomRontiris | Mar 15 | Tags: performance statistics sql maximo create index | Comments (5) | Visits (1,648)

Maximo is everywhere! It has been around for several decades and is in use by many different industries of all sizes. Client databases have grown in size and complexity over the years. Continued monitoring of database integrity is always recommended to make sure all your Ts are dotted and Ts are crossed. Just the other day I was talking to a client that was experiencing major slowness in performance while generating a handful of Work Orders from the Preventive Maintenance application. They were attempting to generate about 5... [Continue Reading]

Like 0

3

Changing status of Stateful Mbos using Integration Framework

AnamitraBhattacharyya | Mar 12 | Tags: ibmeam maximo services changestatus annotation mea | Comments (1) | Visits (1,006)

Ever explored the various ways of changing status of Mbos using the Integration framework. The Integration framework provides 2 kinds of services - Object Structure Services and Standard Services which allows a client to change status of a stateful Mbo using XML/HTTP or SOAP invocation. All these can be achieved with configuration and no coding work is needed on the Maximo/Tpae platform side. For more details about how to do this please select this link or access this url... [Continue Reading]

Like 0

3

Bilog: Amazing Clients and Reporting FAQs from Pulse 2012 Conference

PamDenny | Mar 12 | Tags: bilog report customers strategy customize analysis pulse data | Comments (0) | Visits (912)

8,000 individuals from around the world gathered at IBM's Pulse 2012 conference the first week of March. It was an exciting, energetic conference where information and best practices were exchanged among clients, business partners and IBMers. Numerous technical and client sessions were held on Maximo including Upgrades, Integration, Archiving, Mobility and Industry Solutions. Additionally, numerous 'Meet the Expert' Sessions were held on Implementations and System Tuning, Scripting, Planning and Scheduling. Throughout the week, there... [Continue Reading]

Like 0

1

ABOUT THIS BLOG

Welcome to the Asset Management Blog, where you can read the perspectives from Asset Management experts. This Blog provides insights into the overall Asset Management solution, as well as technical details about specific IBM products.

TRENDING TOPICS

- ibmeam
- maximo
- bilog
- data

ARCHIVE

- April 2012
- March 2012
- February 2012
- January 2012
- December 2011
- November 2011
- October 2011

Slide 18 of 20 1_10 September 2009 English (U.S.)

start New Message... 5 Microsoft O... 2 Microsoft Of... 8 Lotus Samet... Presentations Latest Blog Entr... 100% 2:32 PM

Maximo/Tpae 7.5.03 – features in a fix-pack supporting Scheduler

Maximo/Tpae

- Crews
- Map API
- Email for Maximo
- Service Addresses
- OLSC integration
- Everyplace templates

Industry Solutions

- Utilities
- Service Provider
- Spatial