

Lotusphere 2009

Messaging & Collaboration • UCC • Social Software • Portal & Mashups • OnLine Services

Lotus software

IBM



  **Edward Orange**

Director, Lotus Asia Pacific

IBM Software Group

I am presenting @ LCTY 2009

[Profile](#)

[Communities](#)

[Blogs](#)

[Dogear](#)

[Activities](#)



  **Perry Rosenboom**

Demo Doyen

IBM Software Group

I am demoing @ LCTY 2009

[Profile](#)

[Communities](#)

[Blogs](#)

[Dogear](#)

[Activities](#)

Lotus Notes®



years

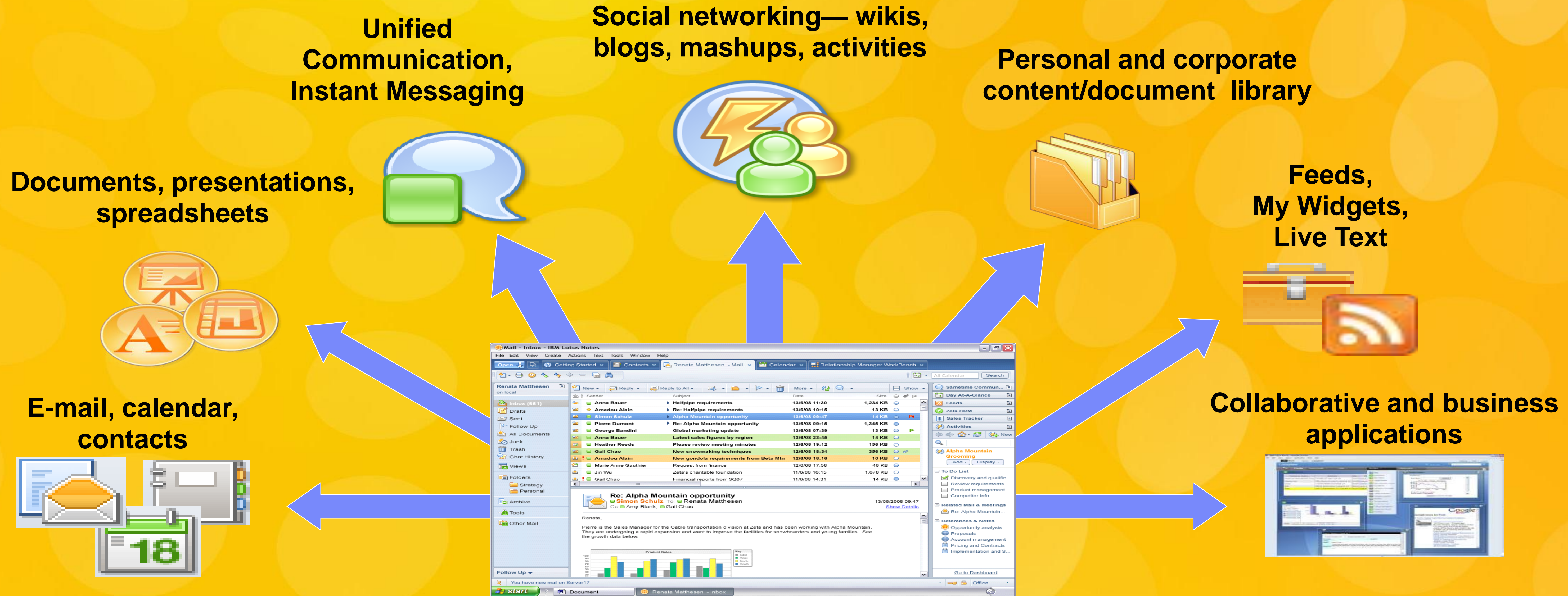
Notes/Domino 8

upgrades ahead of historical trend



Collaborate in context from a single, unified view

Your in-box is a catalyst for productivity—moving from it interrupts your workflow and introduces opportunities for distraction



Leverage IBM Partnerships to extend Value



What Perry is going to do



Perry Rosenboom
Demo Doyen

- Review my Top 5 Notes 8.0

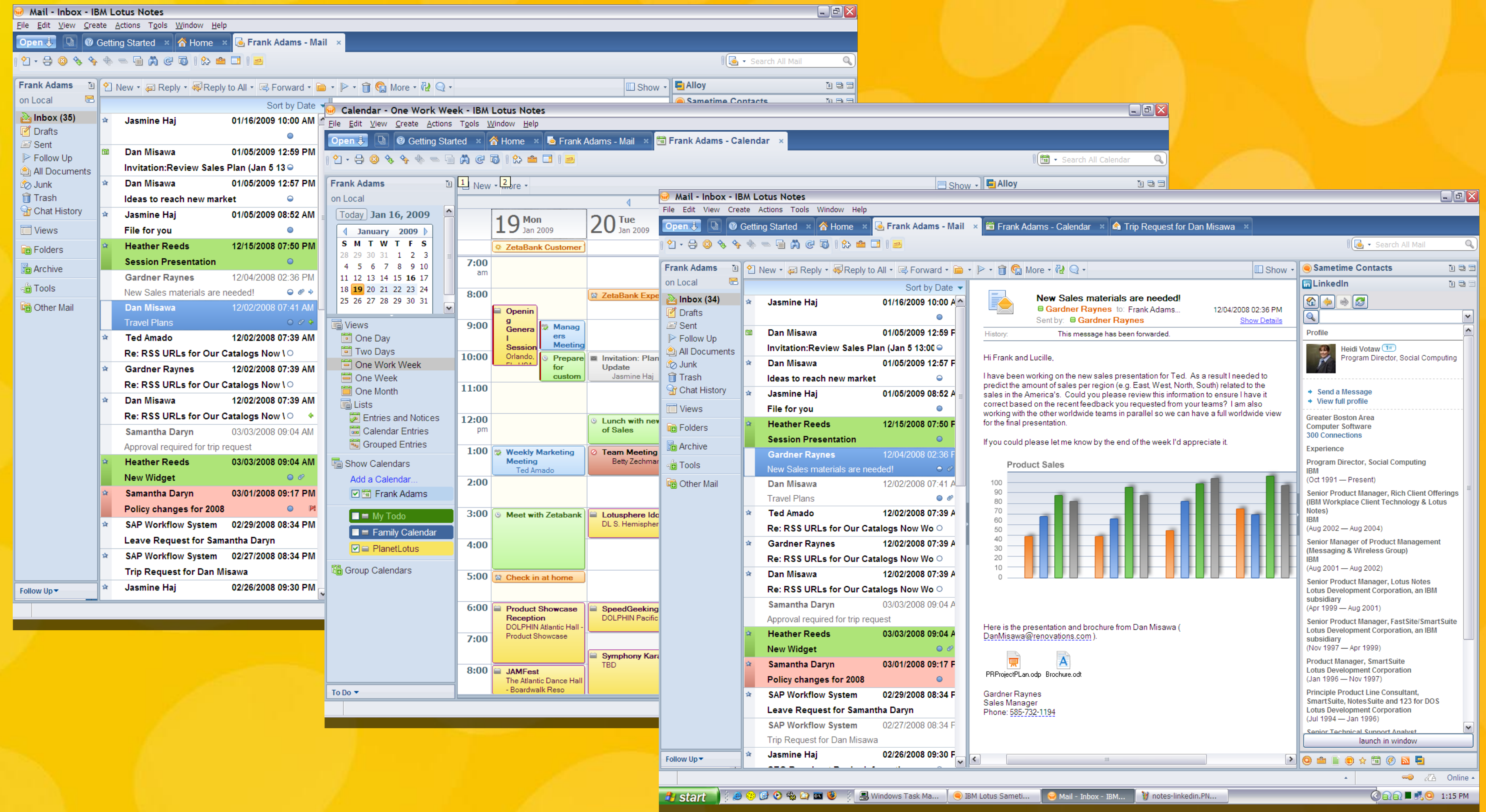
Why Perry likes using Notes 8.0



Perry Rosenboom
Demo Doyen

- ☑ Enhanced UI makes his life easier
- ☑ Simple to create a feed for a database
- ☑ Quickly locate those elusive emails

Lotus® Notes® 8.5



What Frank is going to do



Frank Adams
Branch Manager

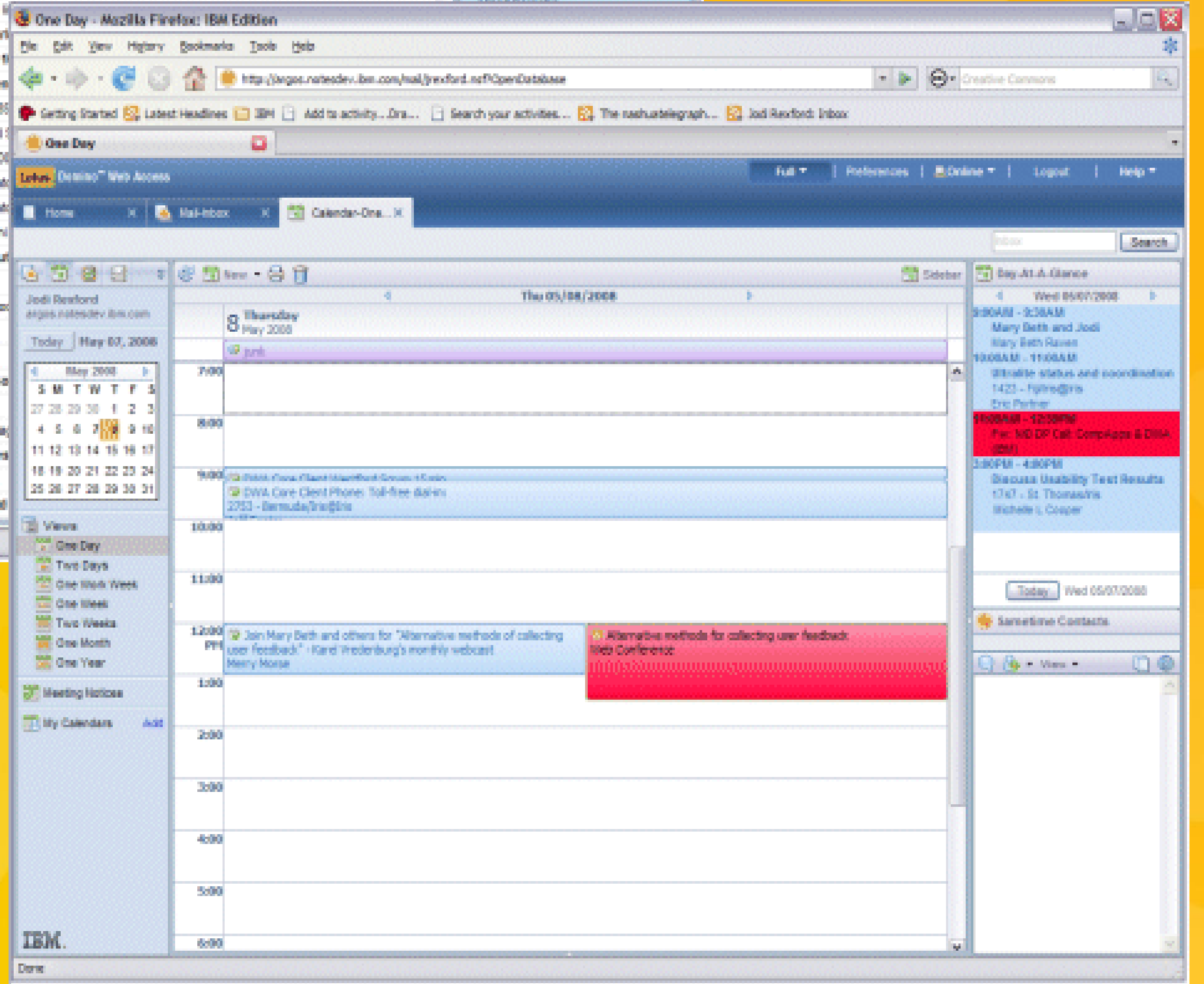
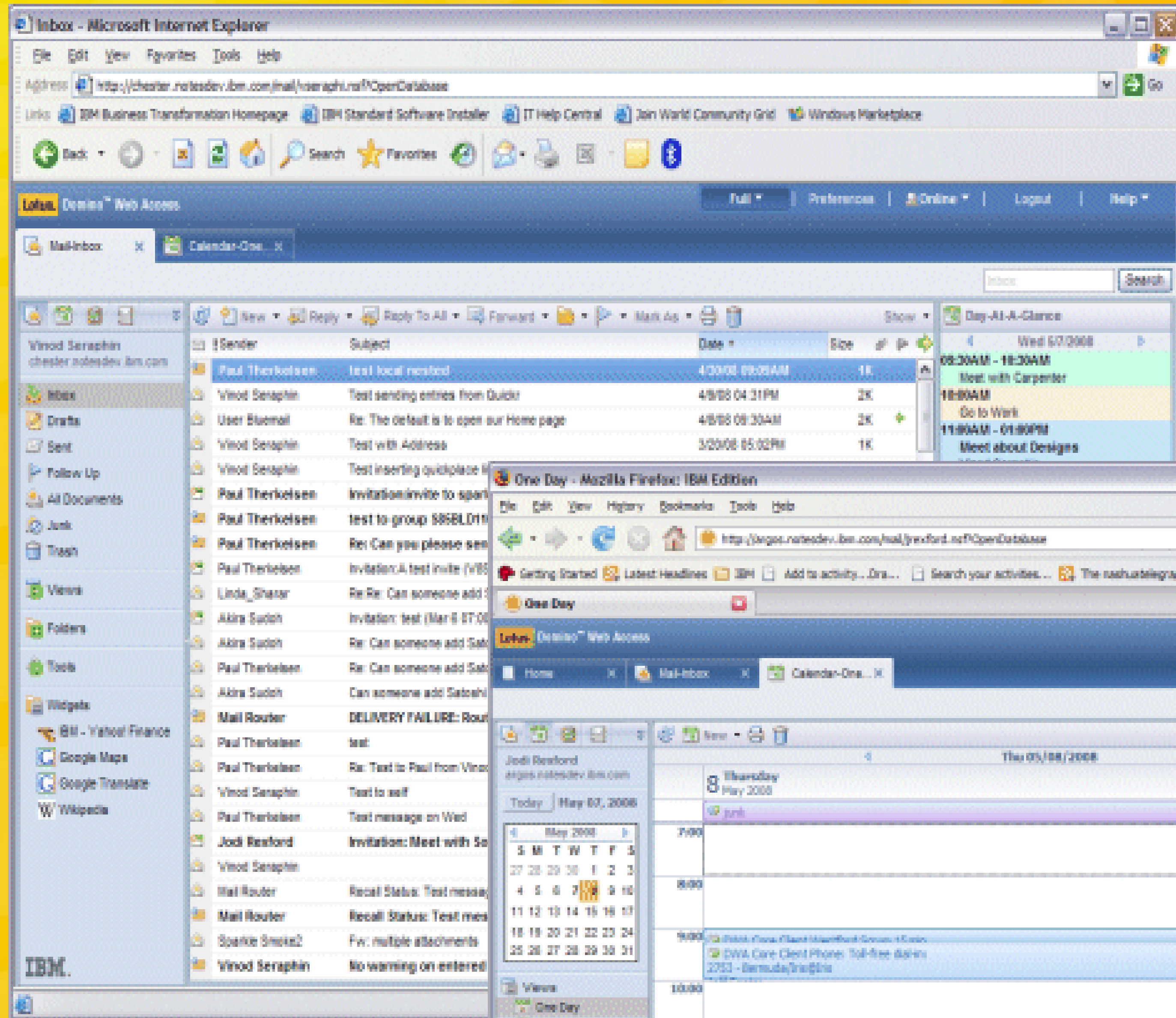
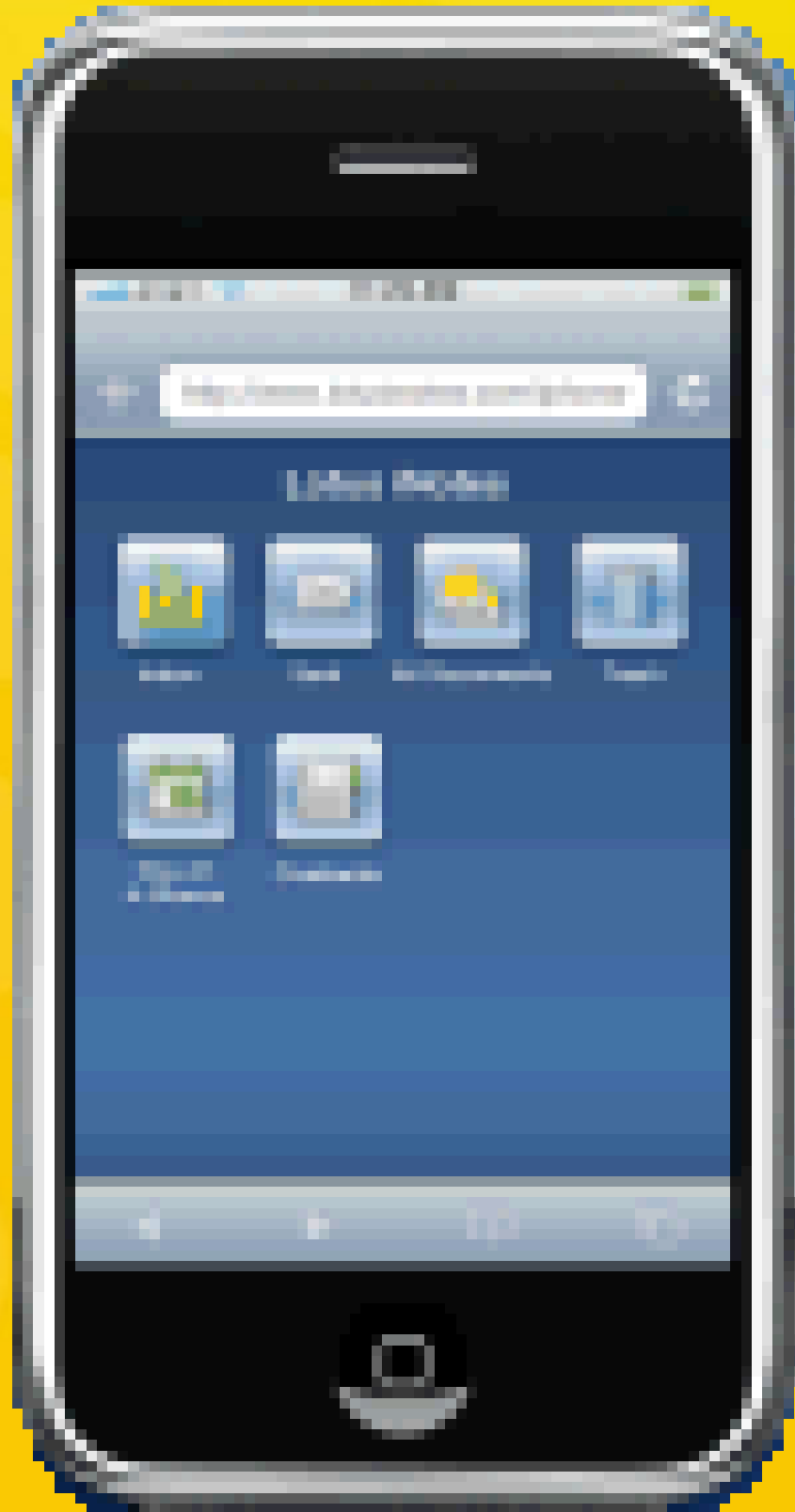
- ☑ Explore my Notes desktop
- ☑ Work with some new sidebar features in Notes 8.5
- ☑ Work with external contact details and calendars

Why Frank likes using Notes 8.5



Frank Adams
Branch Manager

- ☑ Enhanced UI makes his life easier
- ☑ Simple to create a feed for a database
- ☑ Quickly locate those elusive emails
- ☑ Everything I need to work with contacts
- ☑ Drag and drop saves time



Lotus® Notes® 8.5

What Jasmine is going to do



Jasmine Haj
Business Specialist

- ☑ Work with the iNotes 8.5 interface
- ☑ Overlay some Google calendars
- ☑ Use a Widget to retrieve a profile from Lotus Connections
- ☑ File email attachments into Lotus Quickr from iNotes 8.5

Why Jasmine likes using iNotes 8.5



Jasmine Haj
Business Specialist

- ☑ The iNotes 8.5 user interface looks great and is easy to work with
- ☑ Three different modes provides the right client for different situations
- ☑ Integration with external calendars and applications makes her job easier

Top Ten Client

Lotus® Notes® 8.5

10. Drag/Drop of Text within Rich Text Editor
9. Offline support for Activities
8. Choose from multiple addresses for a person in typeahead
7. Ability to make your own views look like the PIM views
6. Forward contact as vCard (better import/export)
5. iNotes improvements (e.g. Calendar support in Lite mode)
4. Roaming user available with new file-based option
3. Support of Lotus Notes ID Vault and Shared Login
2. MAC and Ubuntu Linux Support
1. Calendar Federation



NOKIA



salesforce.com.



Lotus software

IBM Lotus
Collaboration:

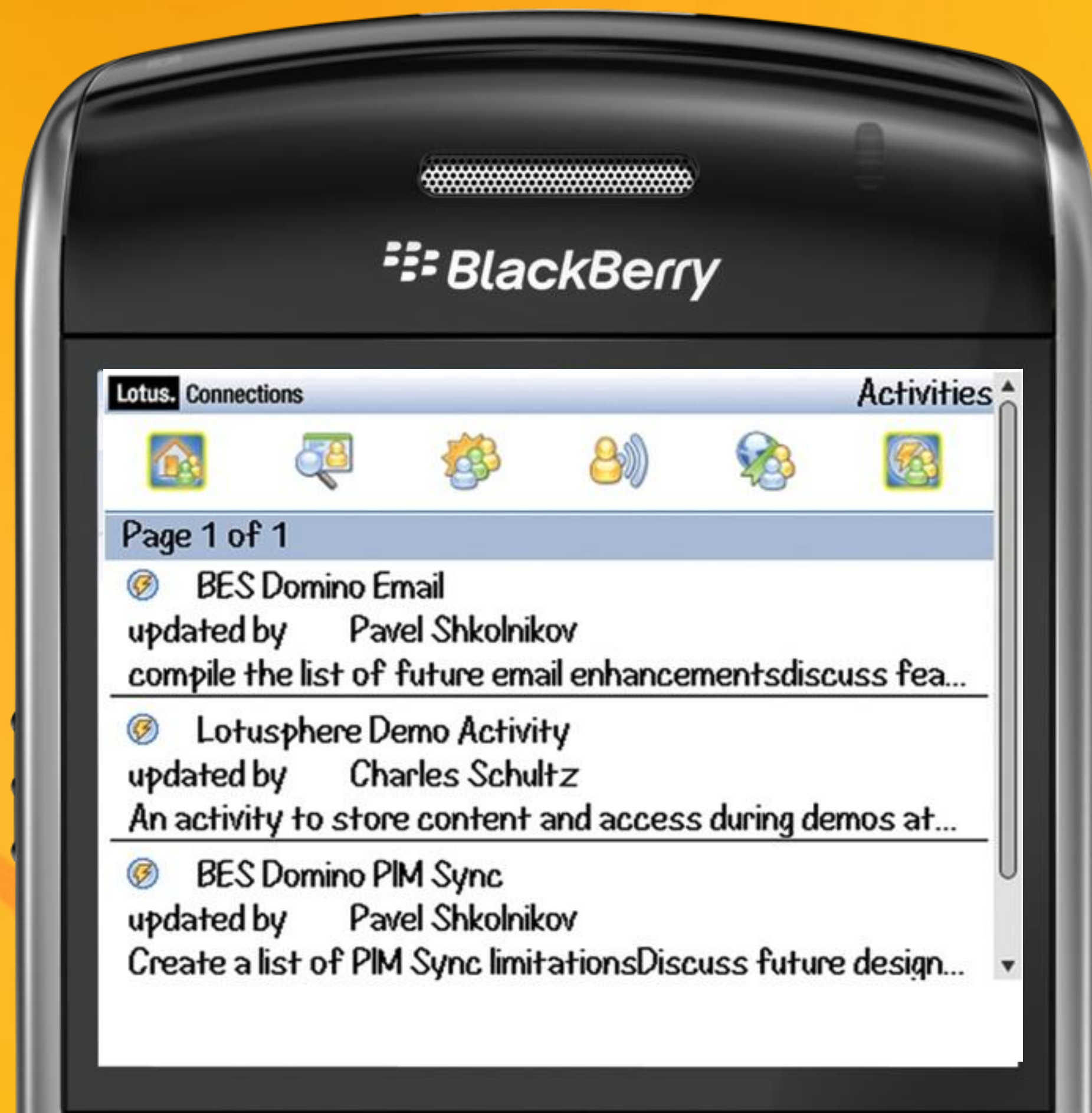
- Notes Mail
- Connections
- Sametime
- Symphony
- Quickr
- Domino Designer Applications

Collaboration
Whenever,
Wherever
You Need It

BlackBerry®
Platform

- Enterprise Gold Standard
- 425 Global Carriers
- >150 Countries
- 175k BlackBerry® Enterprise Servers
- 21 Million Subscribers
- #1, #3, & #5 Smartphones in the US
- International Security Certifications
- Rich Eclipse-based Development Environment

 **BlackBerry®**



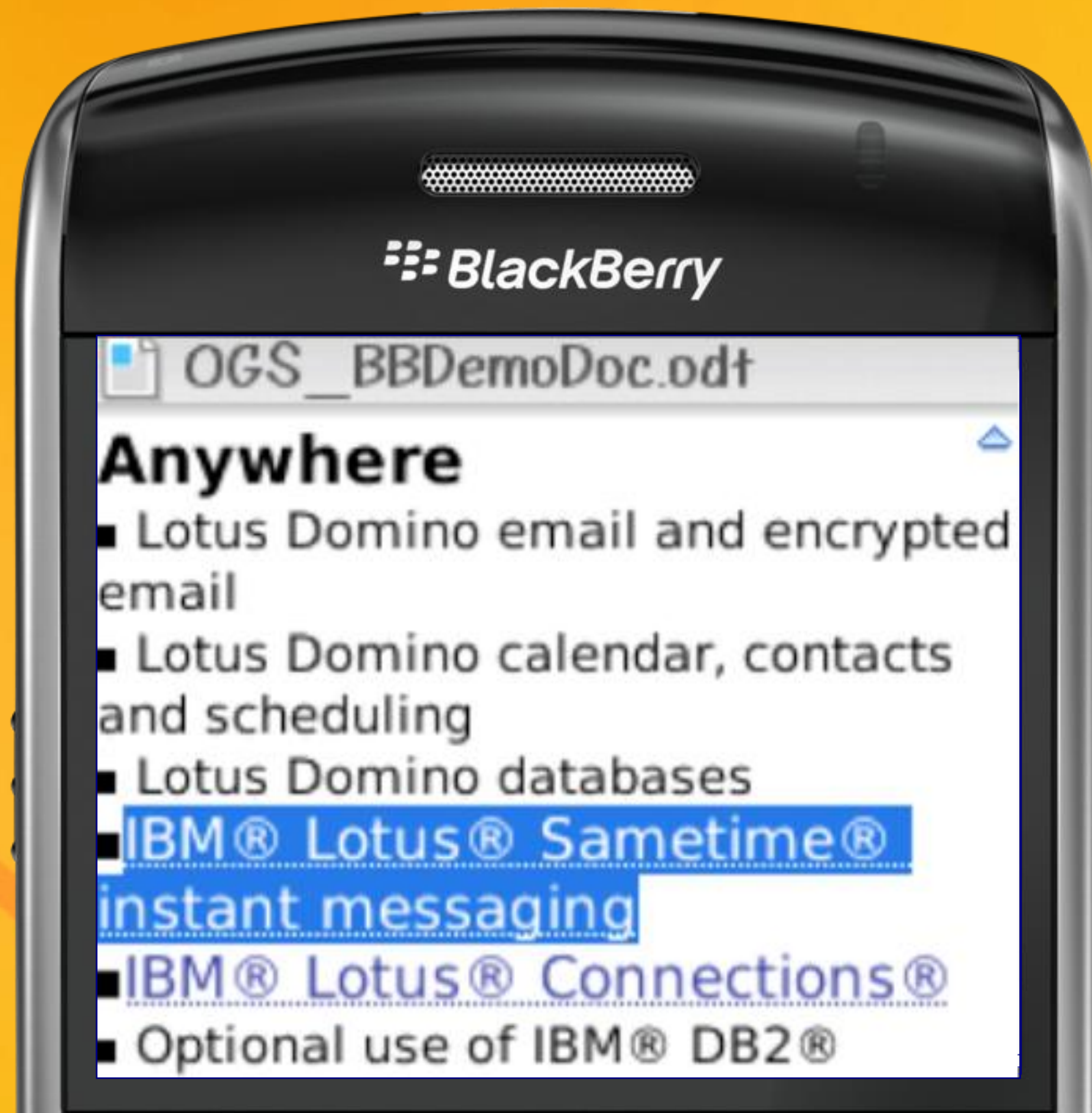
BlackBerry® Client for IBM Lotus Connections

- Enterprise-class mobile social networking with security & manageability
- Mobile knowledge workers in complex global enterprises can locate expertise, collaborate on projects, share information, & form communities... wherever they are
- New! 2.0.1 release planned early 2009
- Rich integration with email, camera, media player, browser
- Supports all connections services, including blogs, activities, & communities
- Enhanced profile information – including pictures & name pronunciation!



BlackBerry® Client for Lotus Sametime

- The personal touch - see who you're collaborating with, and where they are, while you're on the road
- Good fit for the enterprise: scalable architecture, features with controls
- Integral support for enterprise collaboration
- Presence integration



Symphony & Quickr on BlackBerry® Platform

- Team Collaboration doesn't stop when you're on the road
- View Symphony documents attached to an email or a Sametime Chat on your BlackBerry® smartphone
- Prevent bottlenecks: download, edit, and post documents to Quickr libraries on the go



Support for Domino Designer with Xpages on the BlackBerry® Platform

- Mobile Domino applications... with BlackBerry® security & manageability built in
- Write once... runs on web, runs on the BlackBerry® Platform
- Domino developers... instant BlackBerry® developers!



ATLANTICTM

by IBM
and SAP®

planned availability in March

Alloy™ Software by IBM® and SAP®:

Access SAP Information and Processes from IBM Lotus Notes

Reports management

iGive Users information to make good decisions

Travel Management

RRequest, review & approve trip details quickly

Workflow Decisions Management

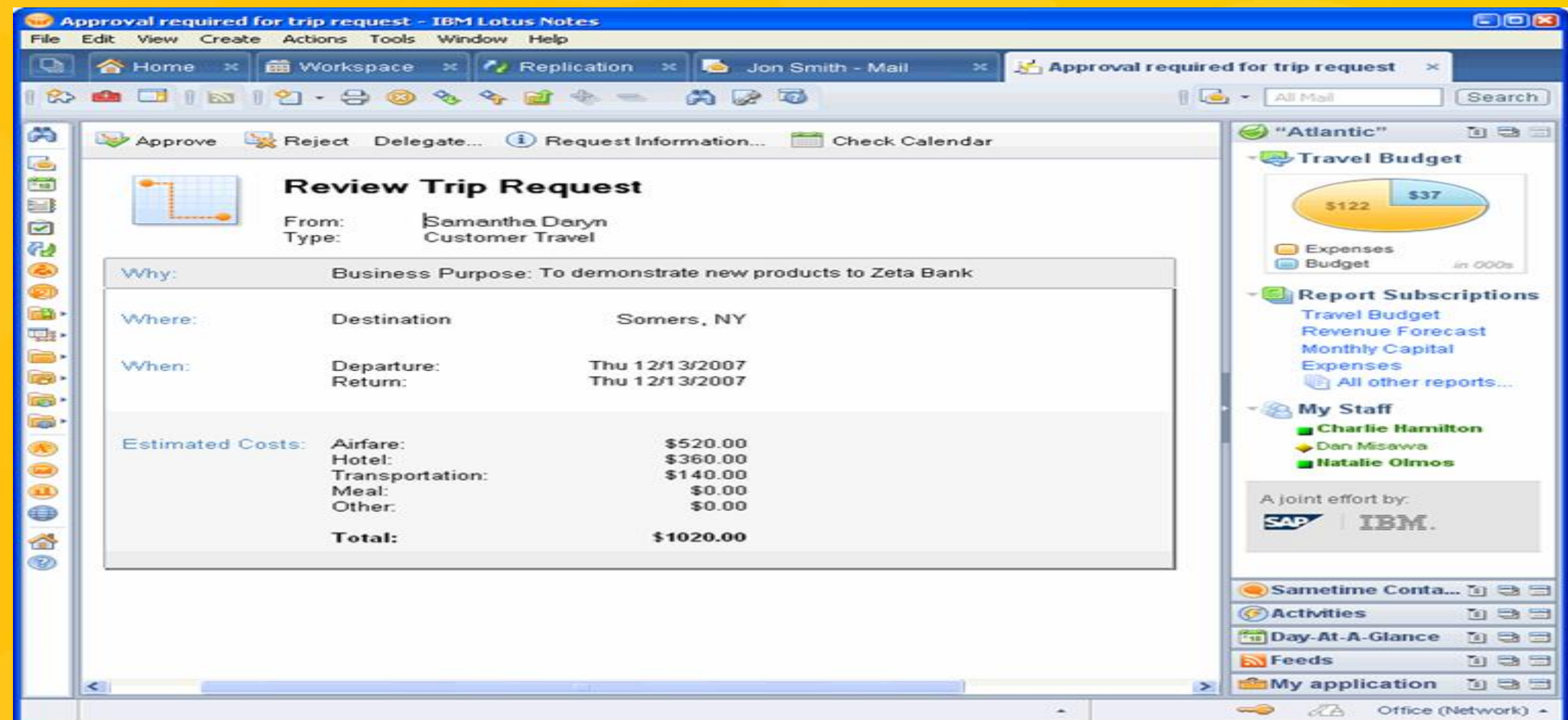
MManage and expose SAP Workflow decision steps in Notes

Leave Management

NManage vacations from Lotus notes calendar

Custom Integration

MAdd contextual information to facilitate better decisions



Alloy™ by IBM® and SAP®



What Frank is going to do



Frank Adams
Branch Manager

☑ Check some SAP Workflow

Why Frank likes using Alloy



Frank Adams
Branch Manager

- ✓ Single client access to Business Applications



Lotus Symphony

Be Free. Work Smart.



over 3,000,000 downloaded

open
and

Simple

What Frank is going to do



Frank Adams
Branch Manager

- ☑ Edit a corporate document
- ☑ Create a PDF for external usage

Why Frank likes using Lotus Symphony



Frank Adams
Branch Manager

- ☑ Intuitive, and easy to use
- ☑ Ability to integrate with other applications
- ☑ Compatibility with other file formats



30%

**Fewer Servers
to Manage**

40% Improvement
in CPU Efficiency





40-60%

Disk

Savings

>50%



Reduction in

I/O Bandwidth Usage

Top Ten Server



10. Notes Shared Login
9. Notes ID Vault
8. Document compression (introduced in 8.0.1 as well)
7. LZ1 compression inside databases
6. Domino Attachment and Object Service (DAOS)
5. Transaction log improvements (up to 50% CPU reduction)
4. Domino router enhancements
3. Domino Configuration Tuner
2. Domino Designer in Eclipse
1. Xpages



Project: OMSYS

- Application Basics
- Lotus Domino Component
- Application Installation
- Test Deployment
- Application Translation
- Application Packaging

Step 2: Package Your Application

Use wizards to take an application and all the necessary components, and assemble them into a package that works with the IBM Smart Business or IBM Lotus Foundations Start platforms.

Prepare. Package. Test. Deploy

System Status

CPU 0 Utilization:	1%
CPU 1 Utilization:	1%
CPU 2 Utilization:	1%
CPU 3 Utilization:	1%
Ethernet 0:	8.8 Kbps
Ethernet 1:	Checking Status.
Ethernet 2:	Checking Status.
PPP Link:	-
Disk Load:	0.0 Kbps
Disk Space Used:	71.7 GB Used 439.9 GB Total (16% Used)

Components for install

Version	Additional Information	Action
1.0		Uninstall
N/A		Uninstall
Build 4828		Uninstall
Build 4303		Uninstall

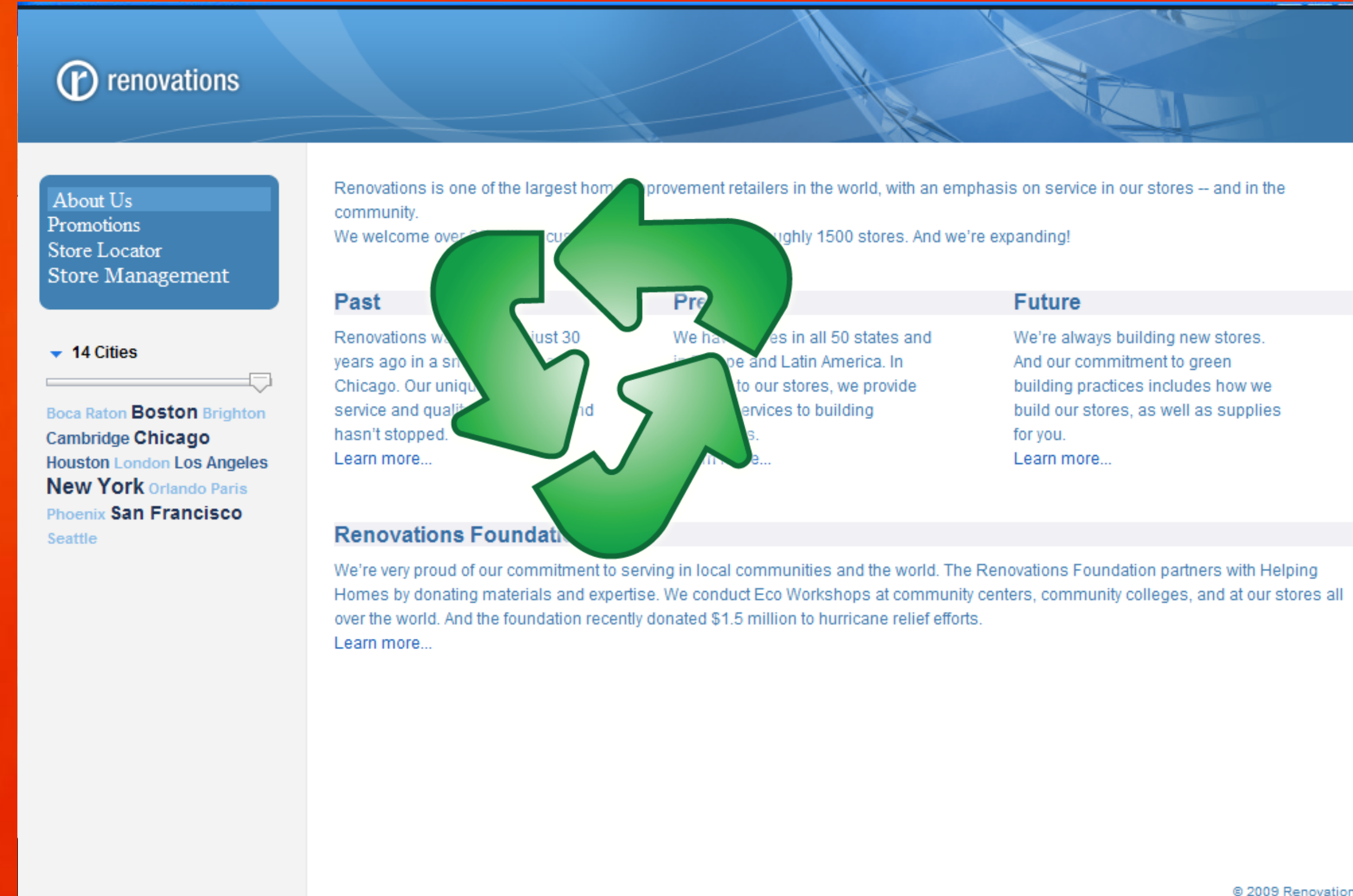


Lotus® Foundations®





Lotus
Domino Designer 8.5



Web 2.0
Applications

What Perry is going to do



Perry Rosenboom
Demo Doyen

- ☑ Showcase some new Domino applications
- ☑ Enhance an application with xPages

Why Perry's customers like the new Domino

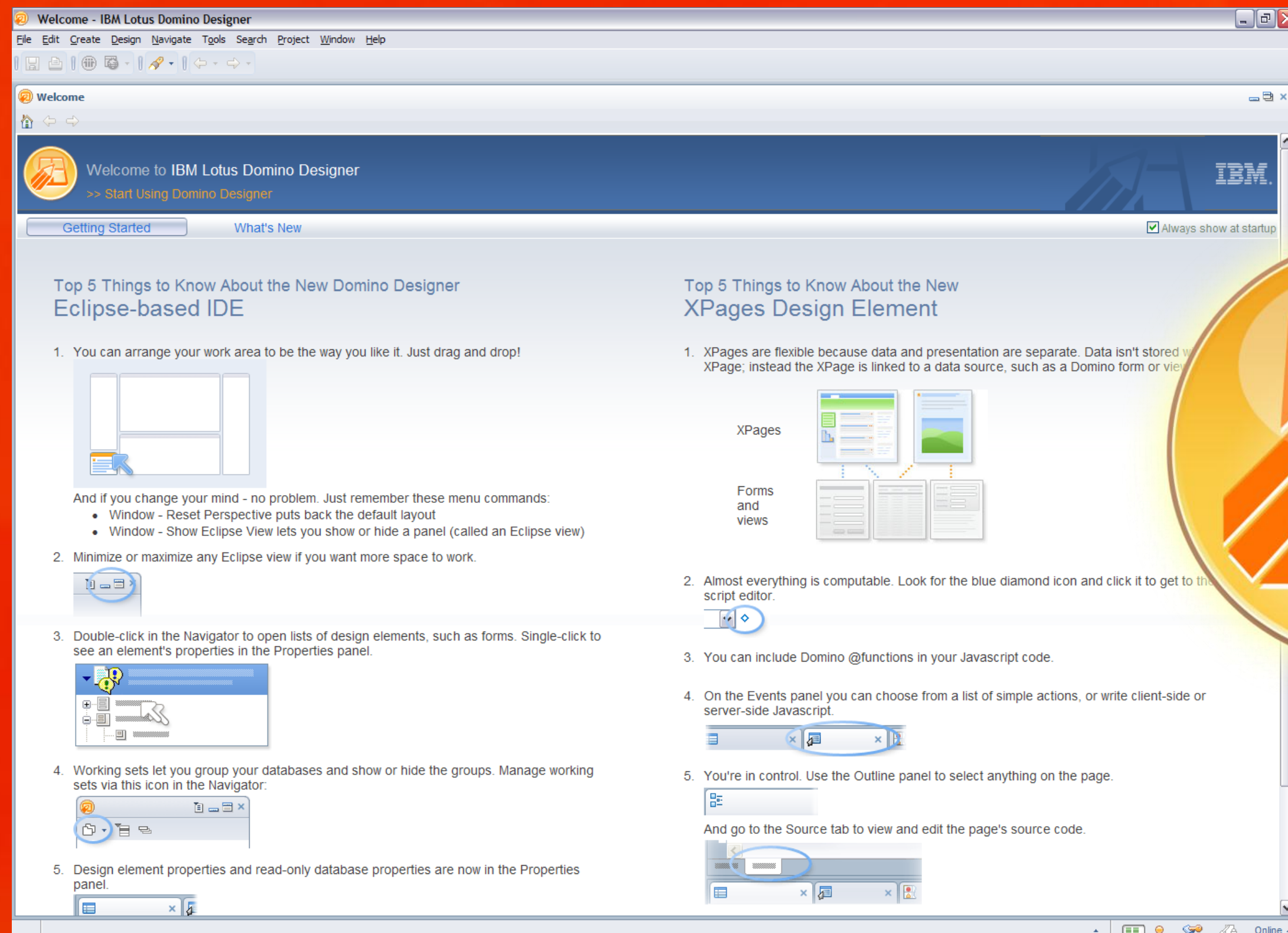
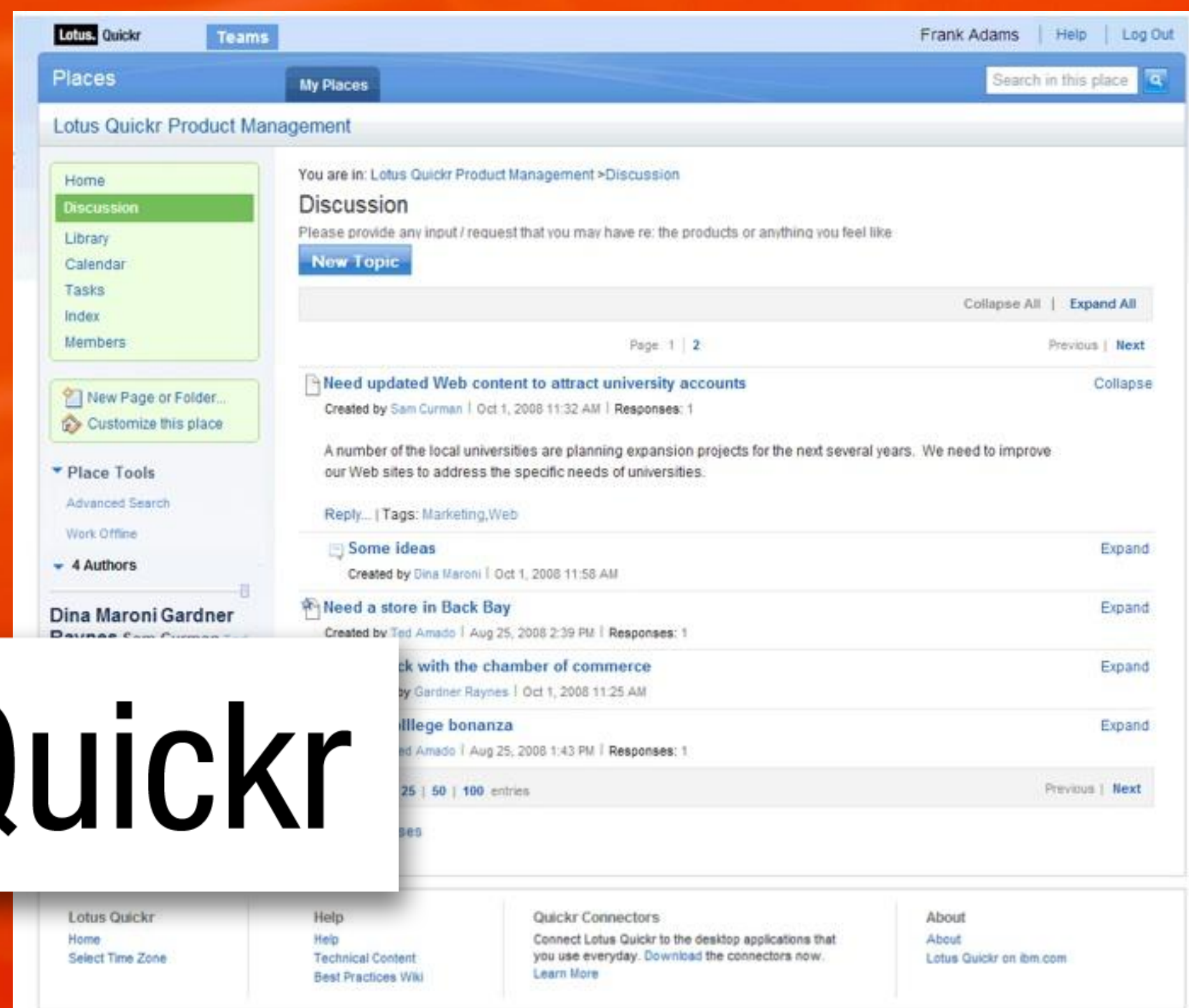


Perry Rosenboom
Demo Doyen

- ☑ Applications look great!
- ☑ Simple to update existing applications
- ☑ Web 2.0 techniques mean faster applications.

Lotus

Quickr



XPages



Promote

Distribute

Support