

Smarter systems for a smarter planet.

## Business Agility in Action

The event series on BPM, SOA and Application Integration

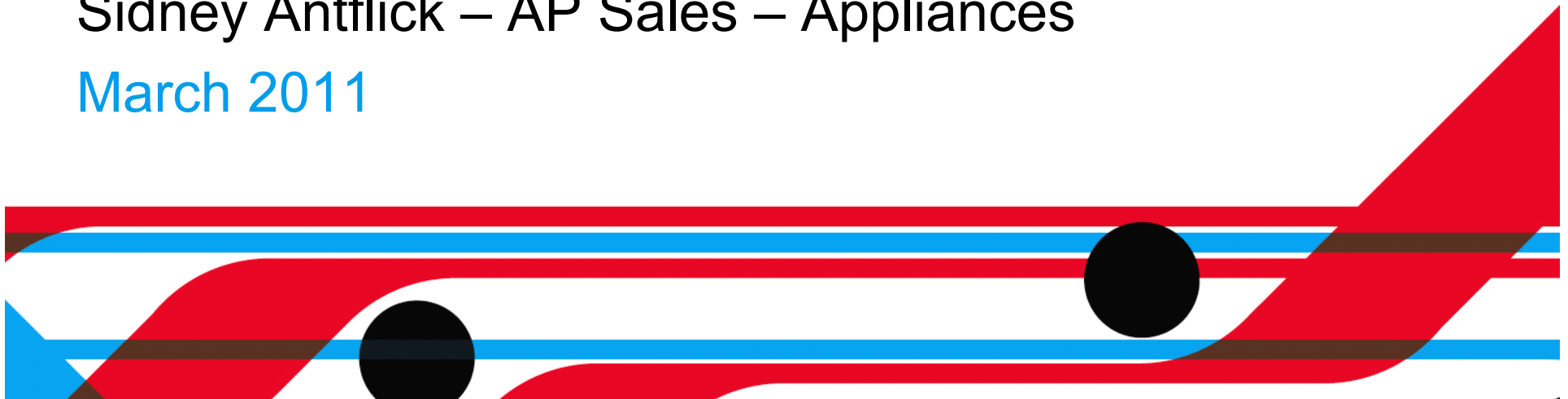
Give your business the flexibility it needs to capitalise on change.



# Introduction to WebSphere Appliances

Sidney Antflick – AP Sales – Appliances

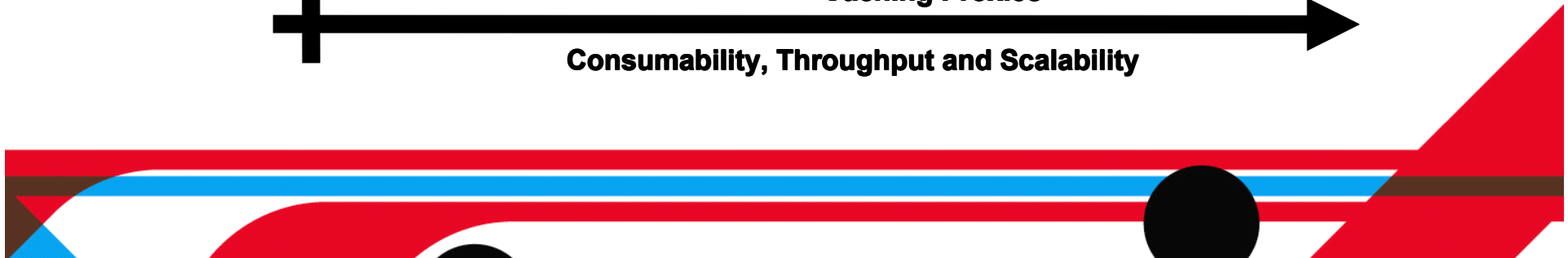
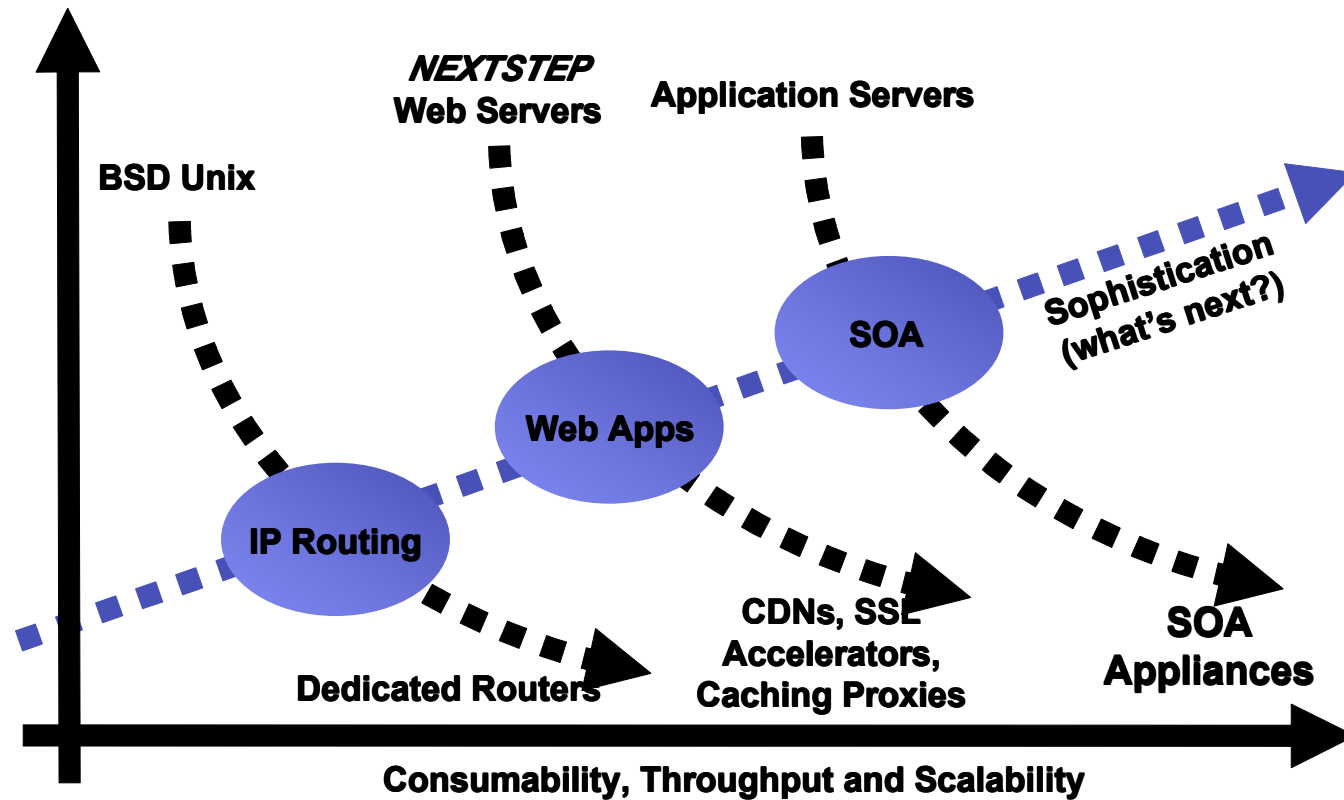
March 2011



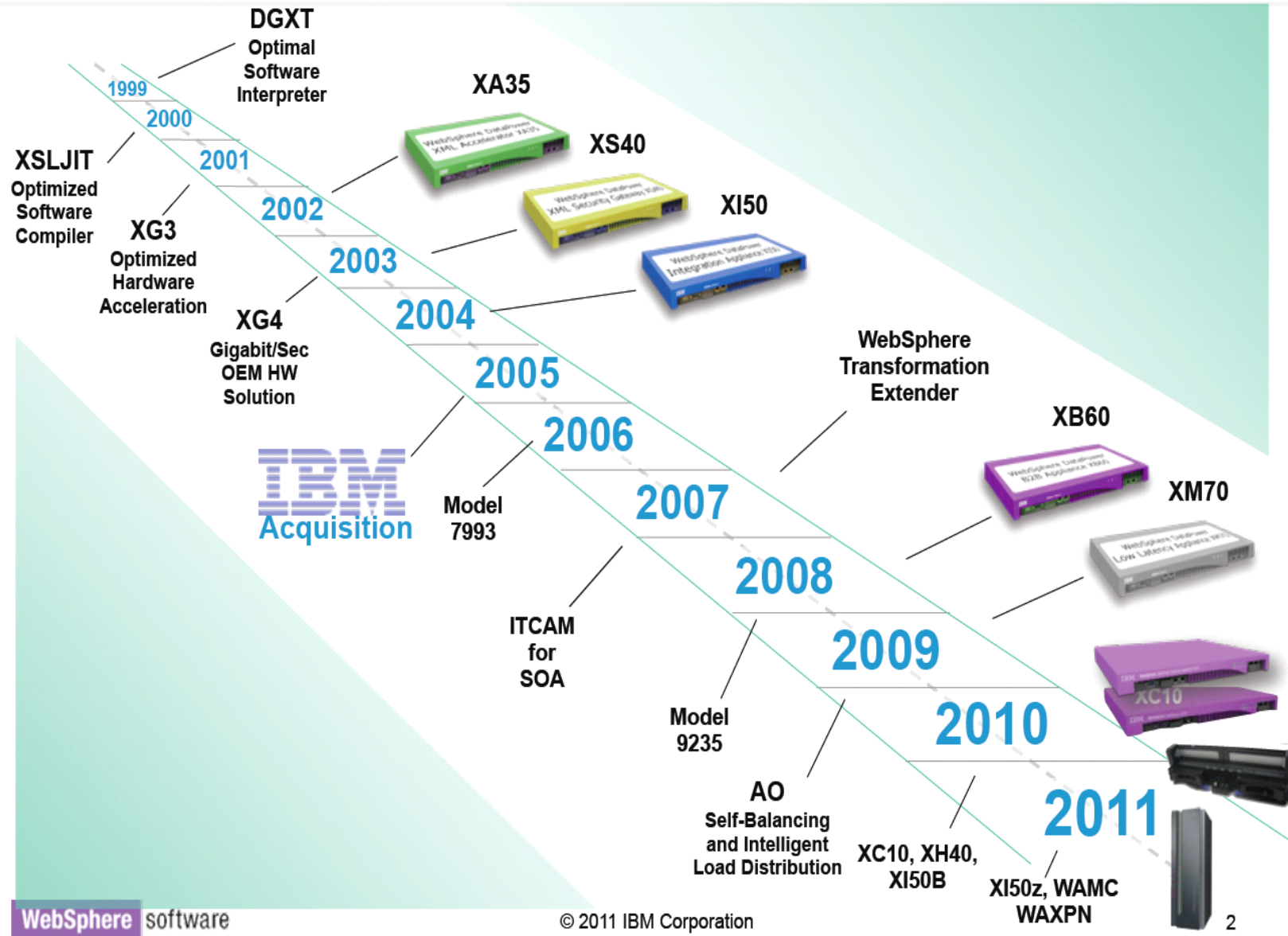
# Quick History: Appliance Origins



Successful key core IT technology migrates from software to dedicated hardware to lower cost and to increase consumability and scale



# DataPower boasts a decade of connectivity innovation:



WebSphere software

© 2011 IBM Corporation



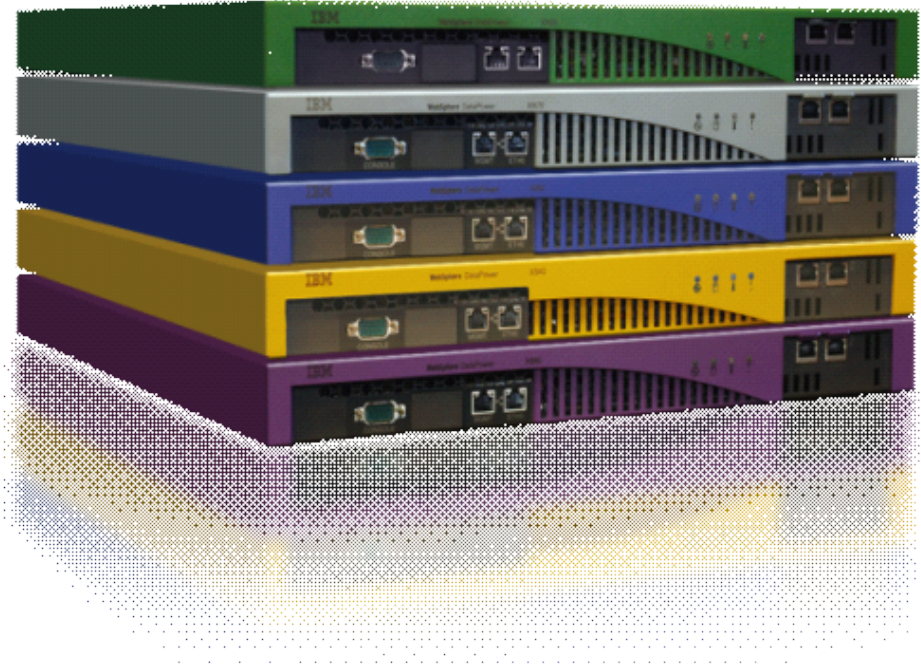
# Introduction to WebSphere Appliances DataPower



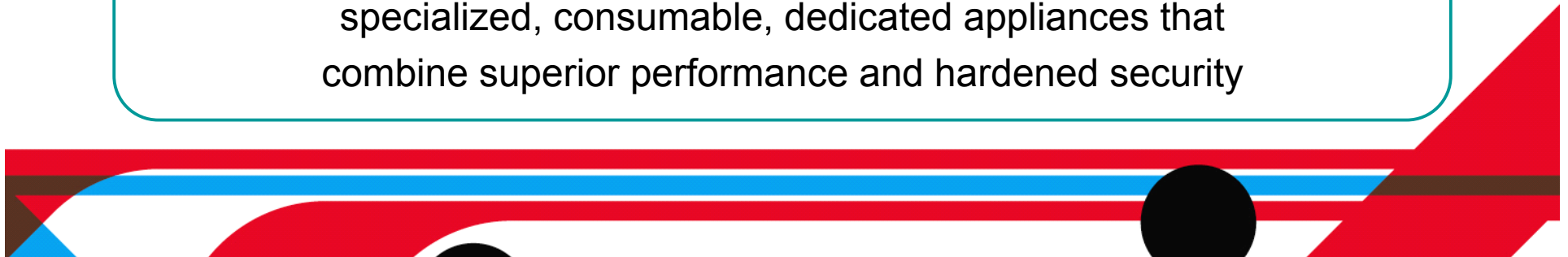
# WebSphere DataPower Appliances...



-  **SECURE** your SOA, Web 2.0, B2B, and Cloud environments
-  **SIMPLIFY** your connectivity infrastructure
-  **ACCELERATE** your time to value
-  **GOVERN** your evolving IT architecture



WebSphere DataPower Appliances provide a **low startup cost**, helping companies **increase their ROI** and **reduce their TCO** with specialized, consumable, dedicated appliances that combine superior performance and hardened security



# WebSphere DataPower Appliances meet your connectivity needs



**XM70**



- Extreme volume at microsecond latency



- Extended messaging protocol bridging
- Enhanced QoS and performance



**XB60**



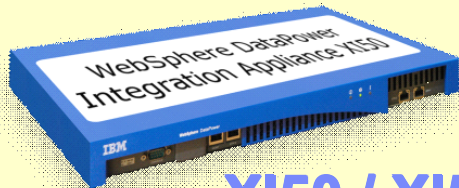
- Unparalleled B2B performance



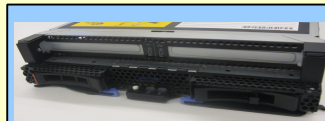
- Secure B2B messaging (AS1, AS2, AS3)



- Trading partner profile management
- B2B Transaction Viewer



**XI50 / XI50B**



**XI50z**



- Consumable hardware ESB



- “Any-to-any” conversion at wire-speed
- Dynamic routing; intelligent load distribution
- XI50B brings the XI50 capabilities to bear in an optimized IBM BladeCenter form-factor
- DataPower XI50z brings the XI50 capabilities in an optimized IBM zEnterprise zBX



**XS40**



- Web Services security



- Rich authentication and authorization
- Centralized policy management

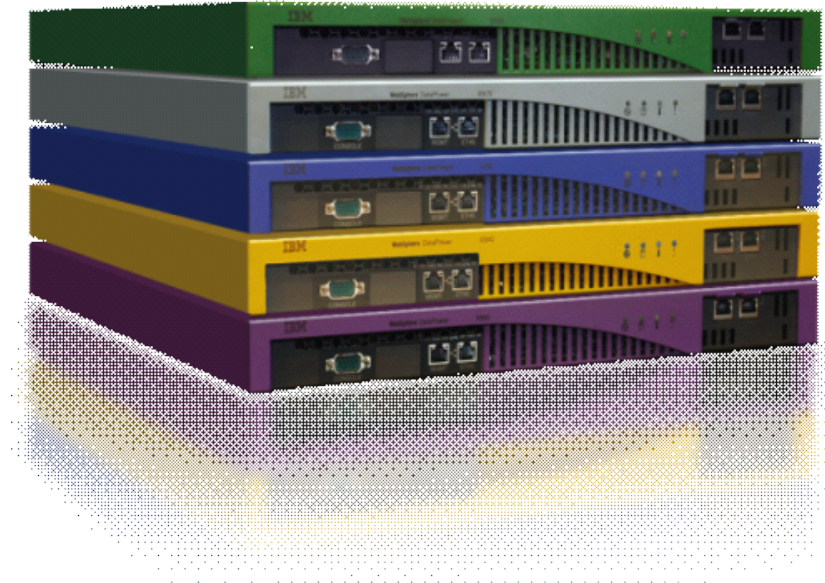
# Achieve unmatched security assurances with hardware and firmware



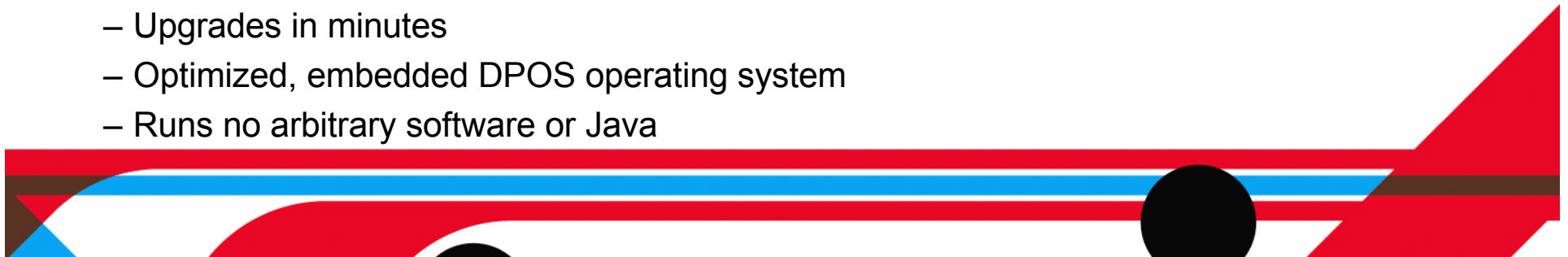
- Purpose-built **hardware** provides physical security
  - Sealed, tamper-evident case
  - No USB ports, external drives, etc.
  - Default “locked-down” configuration
  - Verbose audit log

## *Third party **certifications***

- *Common Criteria EAL4*
- *FIPS 140-2 Level 3 (with optional HSM)*
- *Drummond Group AS2*



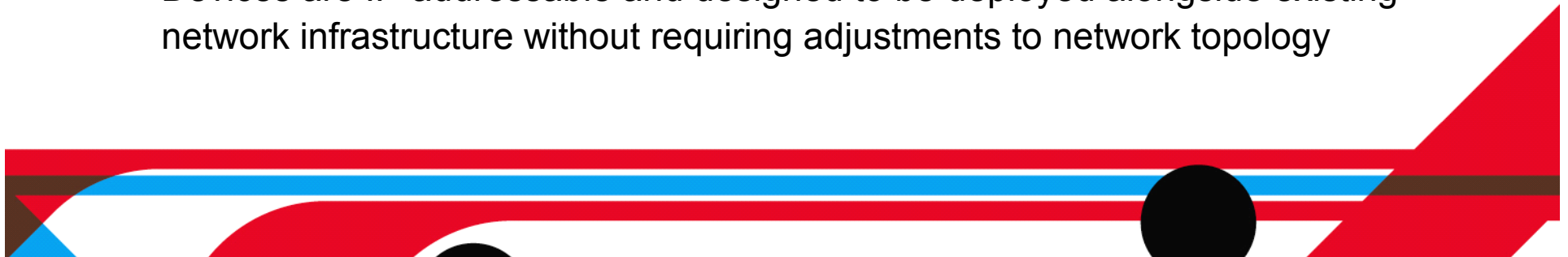
- DataPower Appliances use a hardened **firmware** image
  - Signed and encrypted by IBM
  - Upgrades in minutes
  - Optimized, embedded DPOS operating system
  - Runs no arbitrary software or Java



# DataPower SOA Appliances Are Not . . .



- Regular rack mount servers with some pre-loaded software
- Running a full standard operating system
- Traditional network packets (below layer 7)
- Java-based
- Application servers, which typically provide business logic for specific functions such as customer relationship management or sales force automation
  - XML processing is the common element found across these applications
  - DataPower appliances add headroom and scalability, allowing application servers to process business logic while leveraging a common platform for the heavy lifting that comes with XML processing and security
- Routers, load balancers or IP firewall replacements
  - DataPower augments existing network infrastructure by adding a layer of intelligent infrastructure to the enterprise network
  - Devices are IP-addressable and designed to be deployed alongside existing network infrastructure without requiring adjustments to network topology

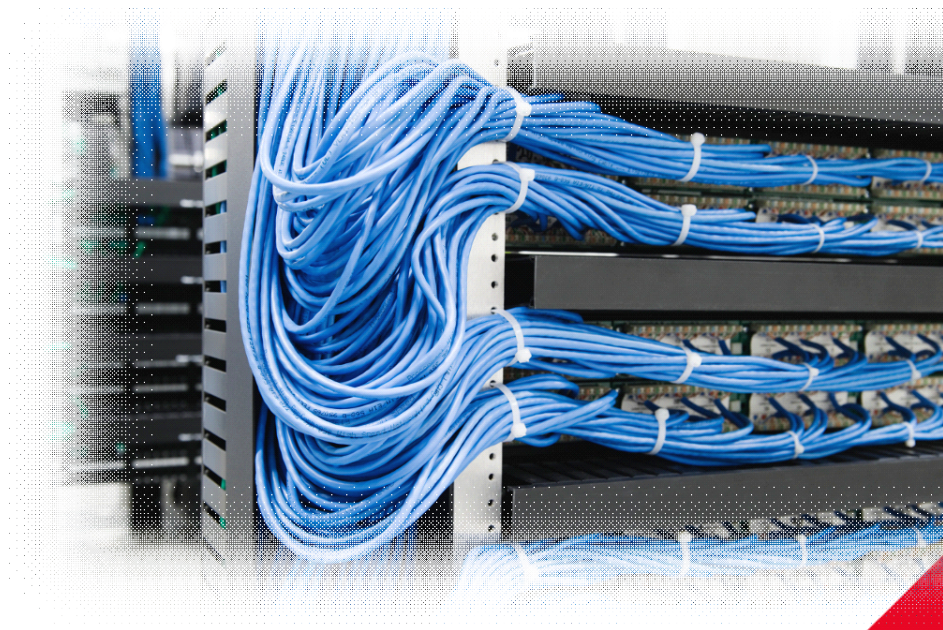




# Why use an appliance for connectivity?



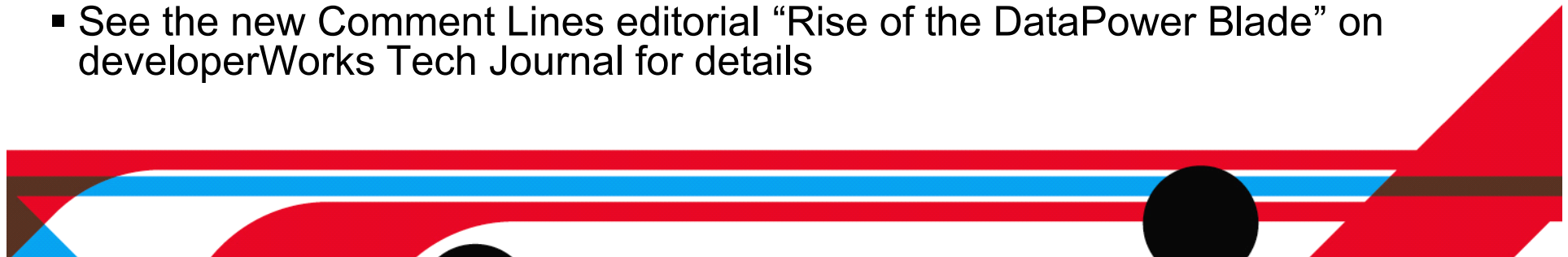
- Purpose-built, fine-tuned **consumable** hardware platform
- Provides high levels of certified **security** assurance
  - FIPS 140-2 Level 3
  - Common Criteria EAL4
- Achieves fast **performance** with multiple layers of specialized hardware acceleration
- Many functions incorporated in a **single device**
  - Service level management
  - Dynamic routing and load distribution
  - Edge security
  - Policy enforcement
  - Transport and message transformation
- **Simplified** maintenance model
  - Drop-in appliance form-factor
  - Secures traffic in minutes
  - Push-button flash upgrade process
  - Integrates with existing operations



# WebSphere DataPower Integration Blade XI50B



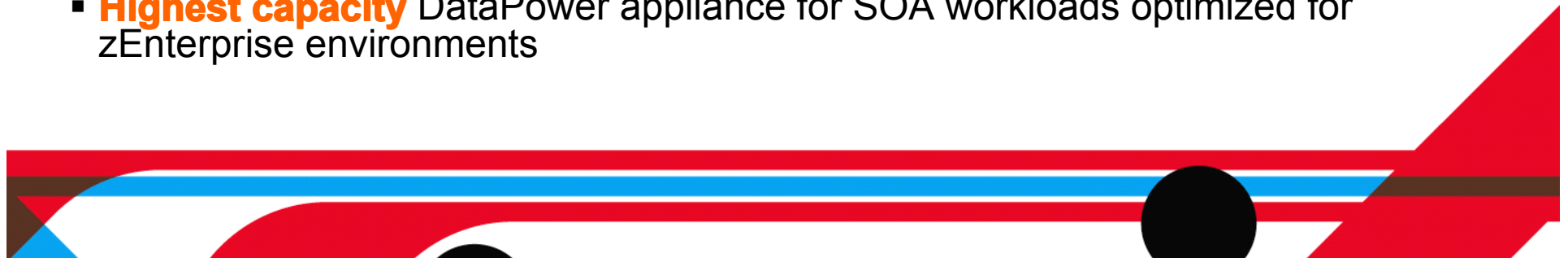
- **New DataPower Appliance Product Offering!**
  - XI50 integration and ESB functions in a dense, high compute, IBM BladeCenter form-factor
  - Supports all of the same ESB, security and integration capabilities as DataPower XI50 v3.8.1
  - Generally Available June 2010
- **Purpose-built Integration BladeCenter Appliance**
  - Exploits latest IBM BladeCenter technology
  - Compatible with BladeCenter BCE, BCH and BCHT chassis
  - Smarter, greener IT: IBM BladeCenter technology allows you to realize innovation with flexible, scalable and highly manageable infrastructure while consolidating and reducing datacenter footprints
- **Increased SOAP/XML parsing and validating providing increased scalability for SOA workloads**
- **Increased serviceability with multiple field-replaceable parts for faster replacement and downtime**
- **See the new Comment Lines editorial “Rise of the DataPower Blade” on developerWorks Tech Journal for details**



# Introducing the WebSphere DataPower XI50 for zEnterprise



- **New Offering!**
  - XI50 features optimized in a dense, high compute **IBM zEnterprise BladeCenter Extension (zBX)** form-factor
  - Supports all ESB, Security, and Integration capabilities of **DataPower XI50 v3.8.1**
- **Purpose-built** Integration Appliance
- Tightly **integrated** with zEnterprise
  - Unified hardware and firmware management through the Hardware Management Console (HMC)
  - Inherits serviceability, monitoring and reporting capabilities of zEnterprise
- **Highest capacity** DataPower appliance for SOA workloads optimized for zEnterprise environments



# Customer Deployment Scenarios



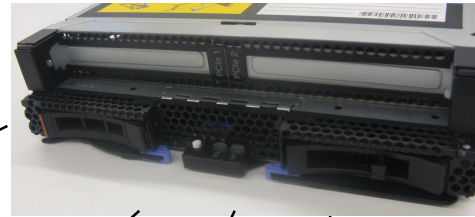
*Telecom /*

*Service Providers*

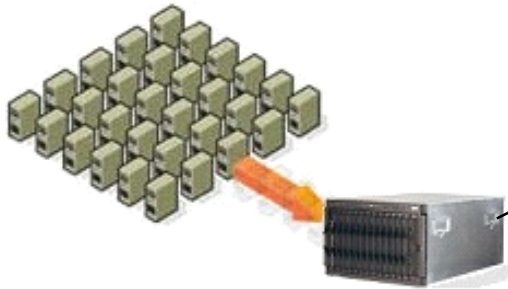


*Financial Services*

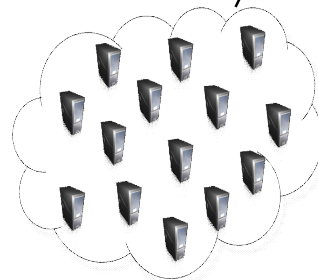
**WebSphere. DataPower**



*Server Consolidation*



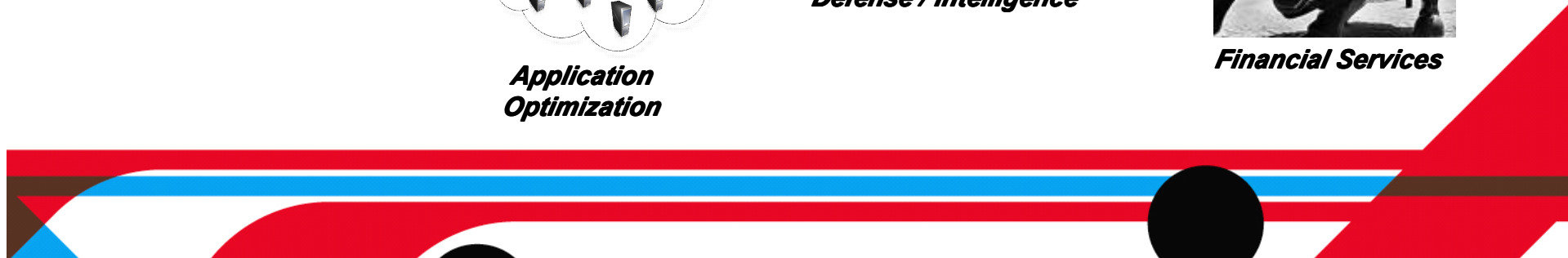
*SOA / Web 2.0*



*Application  
Optimization*



*Defense / Intelligence*





# Introduction to WebSphere Appliances

## Cast Iron



# The Cast Iron Integration Platform



*Complete. Proven. Trusted.*

Logos in this section include: Google, zerofootprint, xactly, NETSUITE, right 90, RIGHT NOW, ADP, SPS commerce, aprimo, BIGMACHINES, Cisco webex, RAINMAKER, HOOVERS, @task, concur, Azure, ELOQUA, SuccessFactors, ORACLE CRM OnDemand, GetThere, amazon.com, Taleo, GEARWORKS, salary.com, OneSource, Salesforce, SpringCM, nGenera, PARATURE, recruiting.com, and QuickArrow.



Logos in this section include: CSV, GREAT PLAINS, SAP, J D EDWARDS, SIEBEL, Remedy Corporation, Flat File, CA Clarity PPM, Baan, QAD, Microsoft SQL Server 2008, ORACLE, EPICOR, PeopleSoft, SYBASE, IBM DB2, XML, Microsoft Dynamics, and NAV.

# Complete Integration with Cast Iron



## Complete Flexibility



Physical Appliances



Virtual Appliances



Cast Iron Cloud2

Reduce risk

## Total Connectivity



Save up to 50%  
in time and costs

## Complete Reusability



TIP Exchange



TIP Development Kit



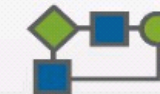
TIP Community

Save up to 80%  
in time and costs

## For All Types of Projects



UI Mashups



Process Integration



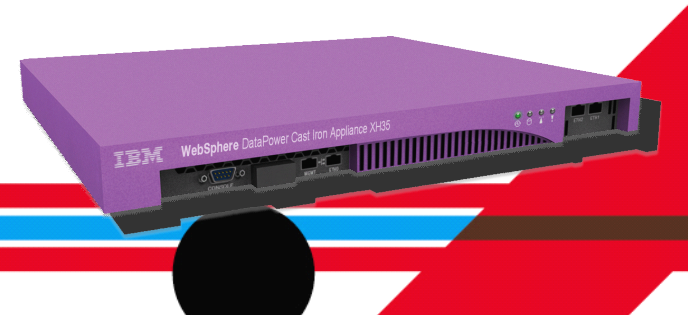
Data Migration

Increase return

# IBM WebSphere DataPower Cast Iron Appliances XH40 Capabilities



- Rapid integration with hundreds of reusable, easily searchable Template Integration Processes (TIPs) and self-guided wizards
- Out-of-the-box connectivity to hundreds of cloud and custom applications
- Powerful capabilities to support data-migration for cloud applications
- Bi-directional real-time and batch integration between cloud and on-premise applications
- Graphical data transformation & rules-based workflow
- Standards-based monitoring and management of the appliance
- Secure management and data communication
- Assured delivery of transactions
- Designed for reliability across multiple projects (with built-in redundant components)
- Low monthly subscription pricing
- 24 \* 7 production support
- No restriction on number of users
- **Device is tamper-resistant/tamper-evident and cannot be taken apart and deployed on other servers**







# Introduction to WebSphere Appliances

# CloudBurst



# Accelerate time to value in virtualized environments



## *WebSphere CloudBurst Appliance*

- Secure cloud management appliance
- Reduce setup time for WebSphere environments
- Codify your infrastructure for reduced risk
- Simplified maintenance and management
- Dispenses WebSphere virtual image software

## *IBM Hypervisor Edition Products*

- New editions of products optimized for virtualized environments
- Pre-configured, ready to run on a hypervisor
- Virtual image software supported and maintained by IBM

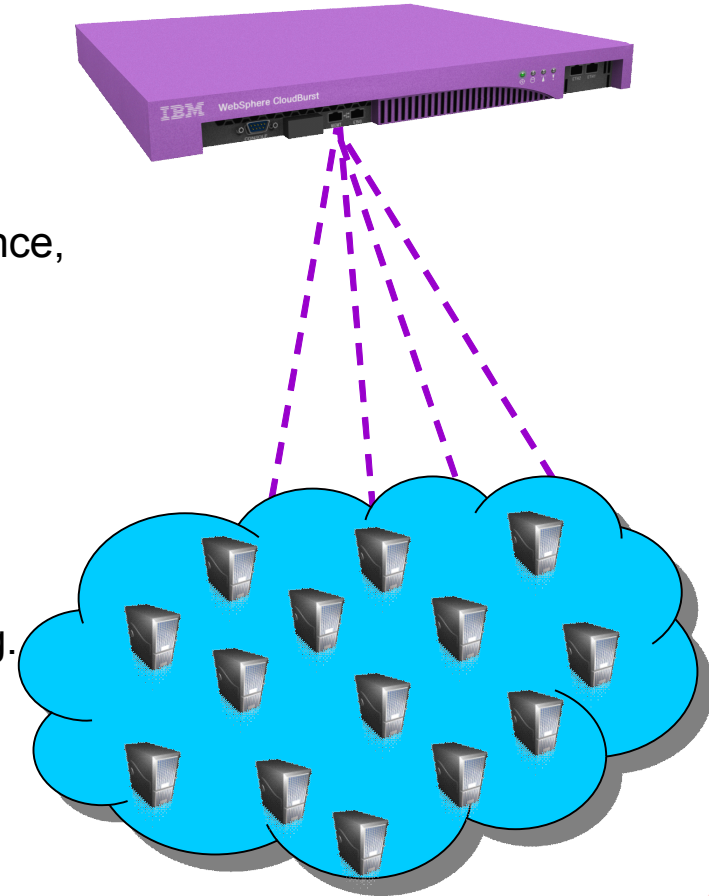


# WebSphere CloudBurst Appliance



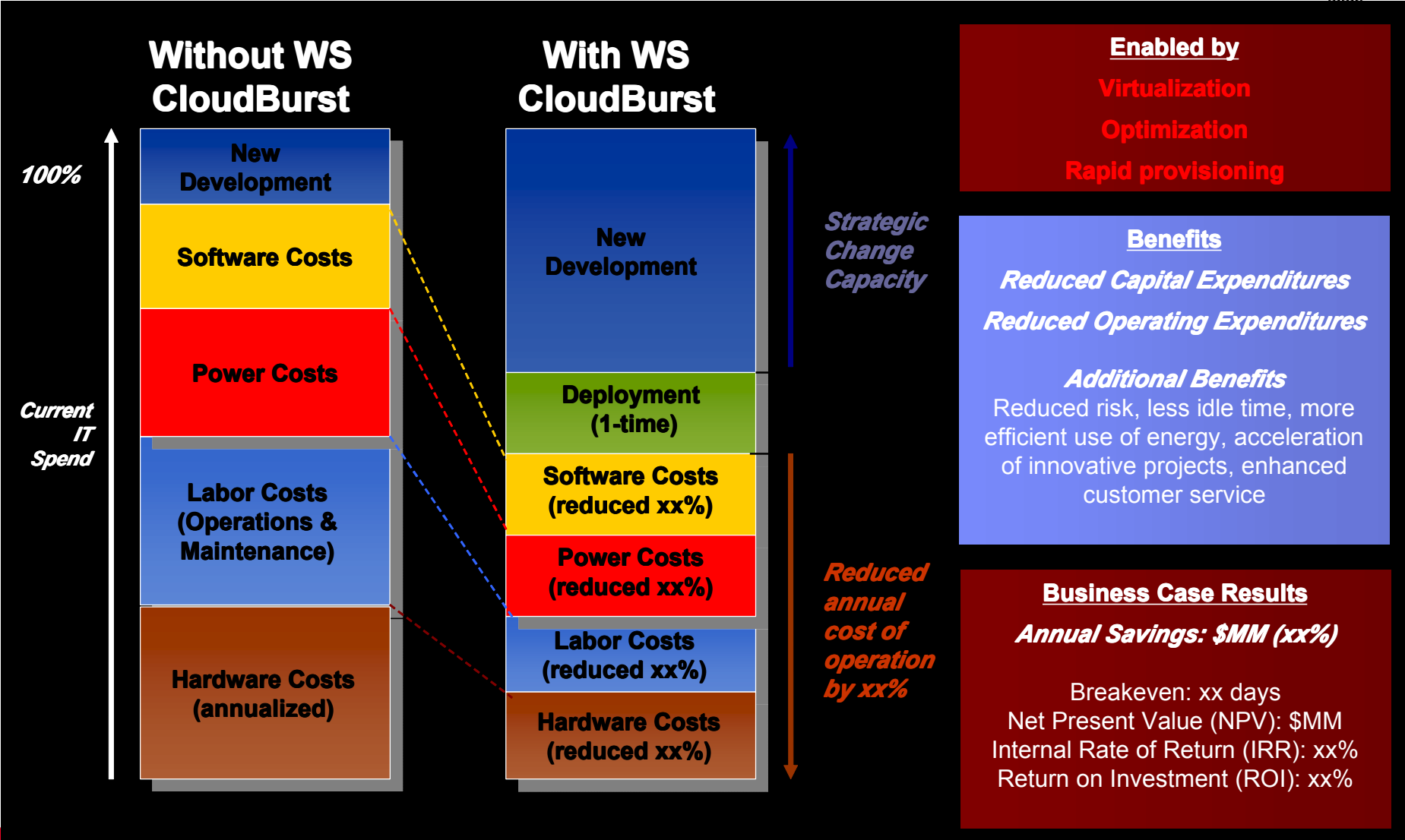
## Accelerate time to value in virtualized environments

- Secure, self-service cloud management hardware appliance
- Unmatched WebSphere management (apply maintenance, federate cells, etc. - not black box)
- Enables consistent & repeatable deployment of application environments based on patterns
- Dispenses hardened WAS patterns into a pool/cloud of virtualized hardware running a supported hypervisor e.g. VMware ESX, z/VM, or PowerVM.
- Integrates with existing infrastructure through programmable REST APIs



# TCO Analysis Available!

## Quantifies WS CloudBurst Benefits





# Introduction to WebSphere Appliances

# XC10



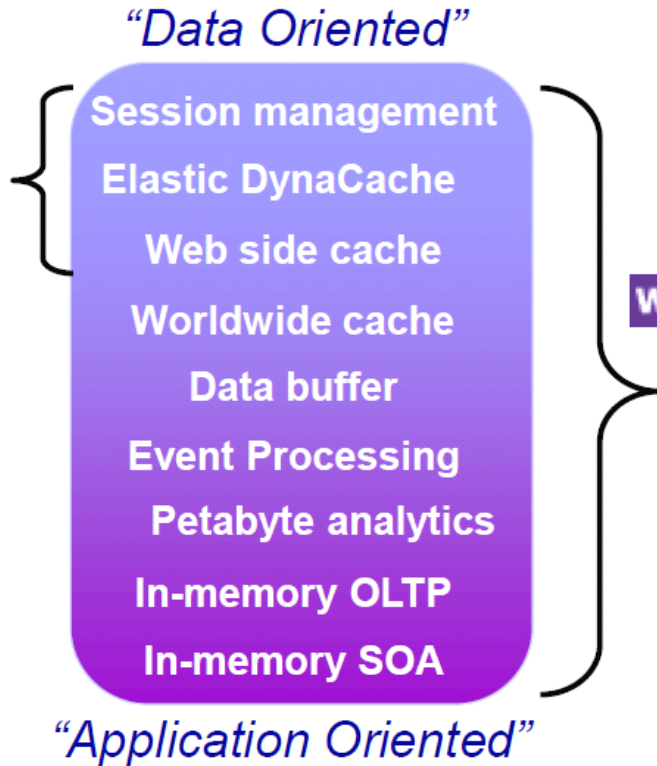
# DataPower XC10 Caching Appliance

Innovative Elastic Caching Solutions



## DataPower XC10 Appliance

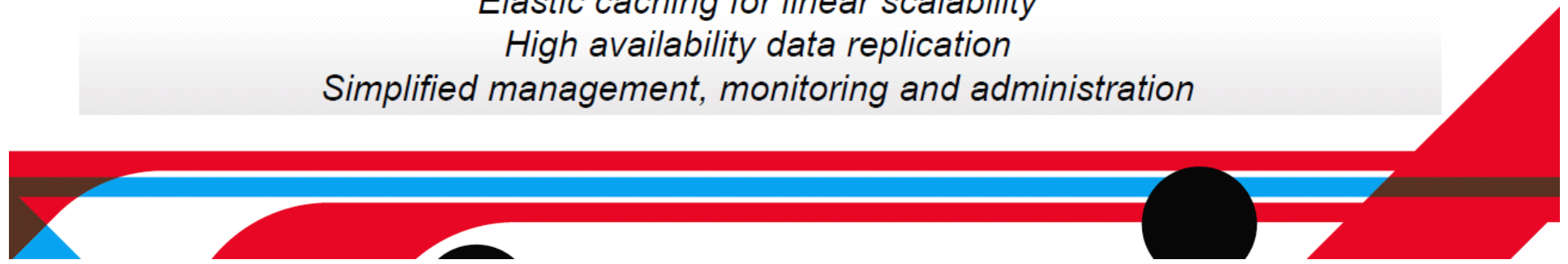
- Drop-in cache solution optimized and hardened for data oriented scenarios
- High density, low footprint improves datacenter efficiency



## eXtreme Scale

- Ultimate flexibility across a broad range of caching scenarios
- In-memory capabilities for application oriented scenarios

*Elastic caching for linear scalability*  
*High availability data replication*  
*Simplified management, monitoring and administration*



# DataPower XC10 Caching Appliance



## Modern Application Infrastructure Topology

