



# PulseANZ2010

Meet the people who can help advance your infrastructure



28-29 July Sydney, Australia





# Maximo Product Roadmap

Dave Gasdia  
Manager, Maximo Product Architects

Pulse**ANZ**2010 



## Disclaimer

The information on the new product is intended to outline our general product direction and it should not be relied on in making a purchasing decision. The information on the new product is for informational purposes only and may not be incorporated into any contract. The information on the new product is not a commitment, promise, or legal obligation to deliver any material, code or functionality. The development, release, and timing of any features or functionality described for our products remains at our sole discretion.



# Continuing the Maximo Strategy - Managing Performance of Critical Assets

- Asset and service management solutions for all critical assets across the enterprise
  - Operating on open standards: J2EE-based service-oriented architecture (SOA)
  - Breadth of capability for all critical assets across the enterprise
  - Delivered with deep industry-specific functionality

Transportation Assets & Infrastructure



Building, Facility and Property Assets



Production Assets Oil, Steel, Utilities



IT Assets & Infrastructure



Communications Infrastructure



# IBM Extremely Committed to Maximo and the EAM Market

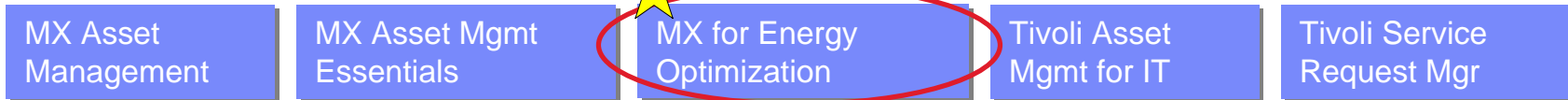
- Continued investment in Maximo market leadership
  - Product development
  - Sales – direct and channel
  - Support and professional services
- IBM investments are for complete asset coverage
  - Across all asset classes (transportation, facilities, production, IT and communications)
  - Support of Asset ‘convergence’



***Maximo is Key Component of IBM's Smarter Planet Strategy***

# Asset Management Product Portfolio

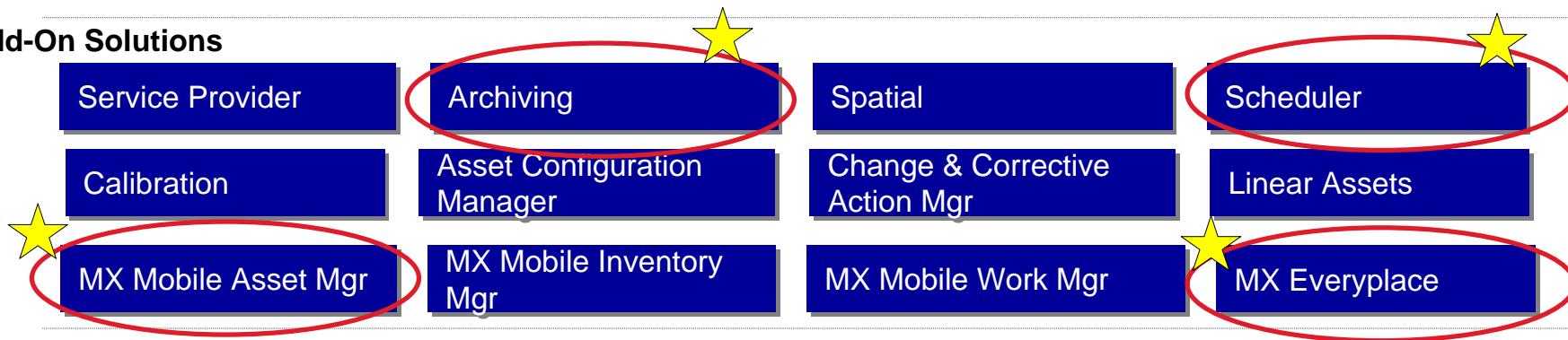
## Core Solutions



## Industry Solutions



## Add-On Solutions



## Integration Solutions



★ = new products in 2H09



## Development Principle: Drive Higher Customer Value

### Objectives

- Enhance Maximo best-in-class capabilities and solutions
- Drive innovation with input from customer groups, advisory councils and business partners
- Protect customer investment; upgrades to future Maximo versions
- Commit to open standards: J2EE, SOA
  - both IBM and non-IBM platform components



# Maximo Asset Management Release 7.1

- Current release and base for the future
  - 1<sup>st</sup> major EAM release since IBM acquisition of MRO
  - Expanded support for additional asset classes and enhanced work management
  - Added capabilities to Lower the Total Cost of Implementation and Reduce the Total Cost of Ownership
- Accelerated the Maximo strategy and solidified foundation for Asset and Service Management

Enhanced User Functionality	Lower Cost of Ownership
• Linear Assets	• Configuration Migration & deployment
• Multiple Assets & Locations on Work Orders	• Dynamic User Interface, Security and Field Control
• Enhanced Asset Swap capabilities	• New File Import/Export application
• Nested Job Plans	• Launch in context to External applications or web sites





## Maximo 7.x Development Focus

- Continue to Enhance Release 7.1 architecture, platform and technology
  - Incremental Features and Value-add capabilities to extend Release 7.1
  - Expand deep Industry Solution functionality and new Growth areas
  - Leverage IBM products and technology
- Move to Release 7.1 Now....No need to wait for Next Major version !!

## Release 7.1 – 2009 Incremental Value & Add-On's

- **Maximo Scheduler** – New application for graphical Planning and Scheduling, Gantt chart, CPM, plan Work and Resource allocations



- **Maximo Archiving with Optim Data Growth Solution** – archive historical data, preserve application performance in production environment and reduce data for faster upgrades

\* initially available for Release 6.2.4

- **Maximo Everyplace** - Uses browser technology in the mobile/handheld devices, enables ability to access Maximo functionality anywhere via 'connected' access, easily configured to support 'task' based applications

**Pulse2010**



Meet the people who  
advance your infrastructure

# Release 7.1 – 2009 Incremental Value & Add-On's

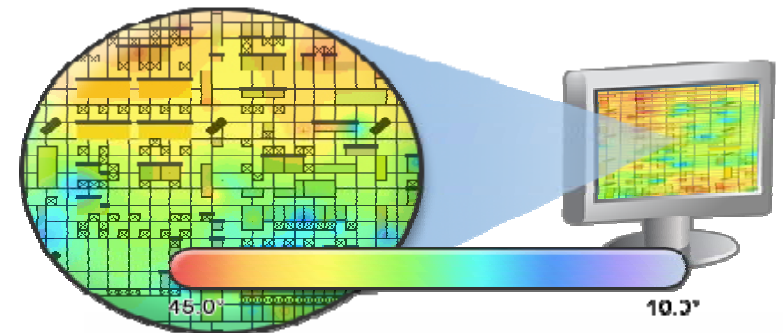
- **ITM for Maximo** – System Administrators can easily monitor performance of Maximo environment, Database & User sessions, Memory usage, Escalation failures, information is displayed in configurable dashboard

\* Free download – available for release 6.2.x and 7.1



- **Cognos Report Integration** – register and execute Cognos BI reports from within Maximo, packages are Dynamically created through Maximo framework and object structures

- **Maximo for Energy Optimization** – measure and benchmark energy and thermal performance, Collect and report actual energy & thermal metrics from IT, facilities and assets, enables condition monitoring to take action on results



**Pulse2010**

Meet the people who can help  
advance your infrastructure



## Release 7.1 – 2009 Additional Enhancements & Improvements

- Performance and Scalability
  - Dedicated team
  - Benchmarking
  - Identify framework improvements and recommendations
- Maintain and Extend supported platforms
  - Browsers
  - Stay current with Application Server versions, DBMS (Oracle, DB2, MS SQL Server)
  - Operating Systems
- Usability & Consumability
  - Advanced Search
  - Tool bar buttons for most common Status changes
  - Run in background mode, WO status changes
  - Ability for users to Cancel long running queries
- Query Based (Ad-Hoc) Reporting
  - Enables business users to create their own unique reports without database querying or report development technical skills
- Report Performance Improvements
  - Report only Server
  - Schedule only Reports
  - View Report Processing & Performance



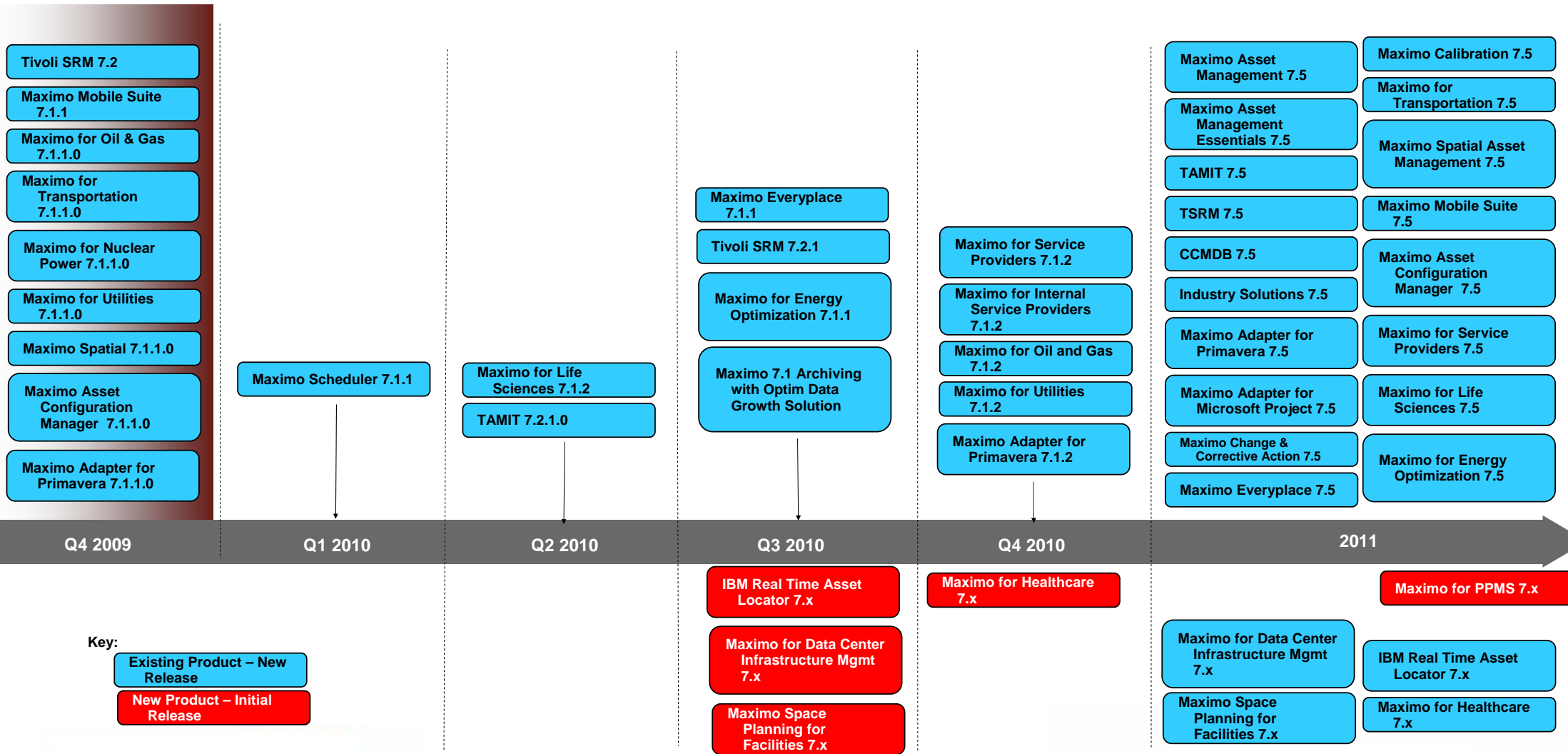
## Maximo 7.x Focus

### Continue Incremental Value-add and leverage current architecture:

- Enhancing Maximo Scheduler
- Enhancing Maximo Everyplace
- IBM Real Time Asset Location (RFID)
- Continued Industry Focus
  - Nuclear, Oil and Gas, Transportation, Utilities
- Enhancing Add-on's
  - Service Provider, Asset Configuration Mgr., Spatial, Primavera Adapter, etc.
- Enhancing Work & Asset Management
- Enhancing Maximo Archiving
- Enhanced Supply Chain & Materials Mgmt Capabilities
- Linear Asset Visualization

The information on the new product is intended to outline our general product direction and it should not be relied on in making a purchasing decision. The information on the new product is for informational purposes only and may not be incorporated into any contract. The information on the new product is not a commitment, promise, or legal obligation to deliver any material, code or functionality. The development, release, and timing of any features or functionality described for our products remains at our sole discretion.

# 2010-11 Maximo Asset Management Product Roadmap

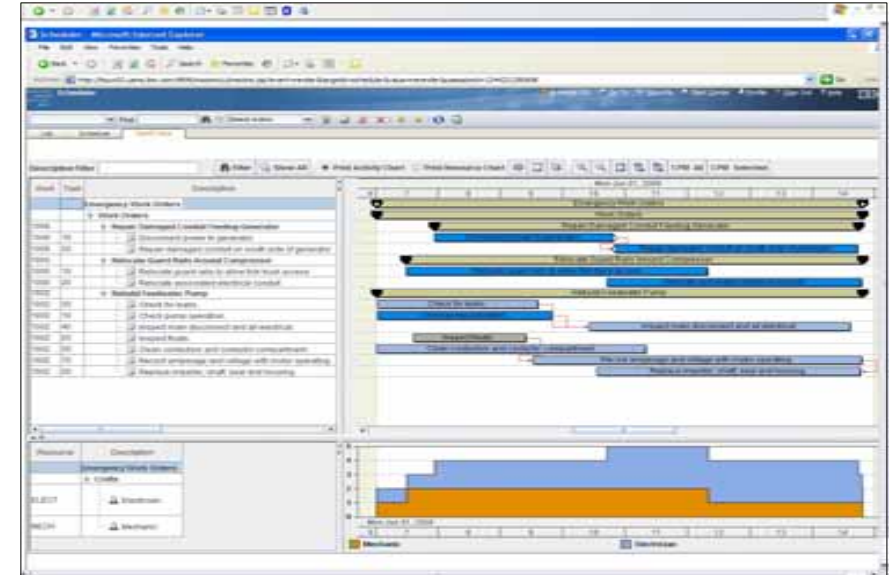


All dates are estimates and specific content is subject to change.

# Maximo Asset Management Product Roadmap 2010

## • Maximo Scheduler 7.1.1

- Preventive Maintenance Forecasting capabilities
  - Single forecast for a PM
  - Utilizing the same PM criteria already used in the PM application
  - Definable forecast range
  - Respects Seasonality, Hierarchy, Job Plan Sequence just as the current PM application does
  - Editable forecast dates
  - Cron task to leverage an automated means to maintain the “forecast window”
  - Stays in lock step synchronization with the generation of PM WO from the PM application
- Provide the ability to aggregate forecasts in the Scheduler Gantt view
  - View resources necessary to complete the forecasted work
  - Drag and drop PM Forecast Dates to dates where the resource demands can be better met
  - Apply and respect date constraints as per Scheduler functionality
- View project work, regularly scheduled work, and future PM work all in the same Gantt view



**Pulse2010**

Meet the people who can help  
advance your infrastructure

# Maximo Asset Management Product Roadmap 2010

## Maximo Everyplace 7.1.1

- GA release based on 7.1.1.7 fixpack prerequisite
- iPhone OS with Safari support (iPod Touch, iPhone, iPad)
- Android 2.1 support (Motorola Droid, Google Nexus One, HTC Incredible)



**Pulse2010**

## Life Sciences 7.1.2

- Calibration
  - Uncertainty Data
  - Asset Templates
  - Standard Validations

Meet the people who can help  
advance your infrastructure

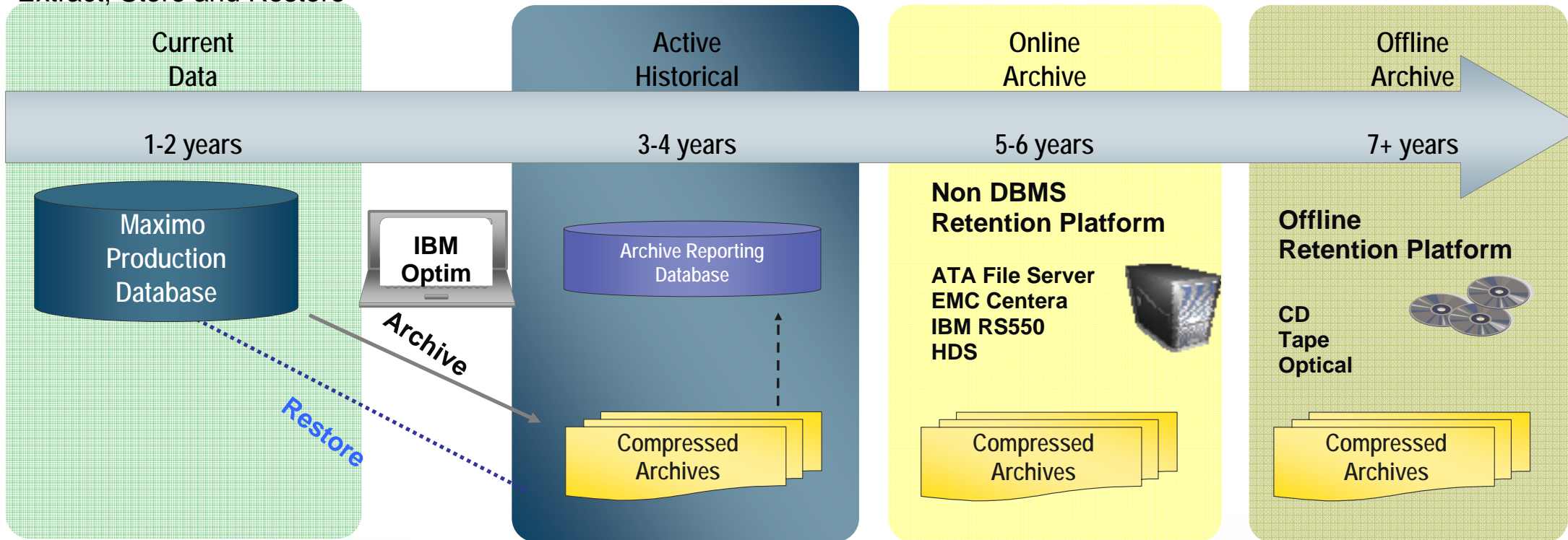


# Maximo Asset Management Product Roadmap 2010

## Maximo Archiving with Optim Data Growth Solution 7.1

- Supports Maximo 7.1
  - Additional objects (Tickets, Escalations)
  - Restore to source database

Extract, Store and Restore



**Pulse2010**

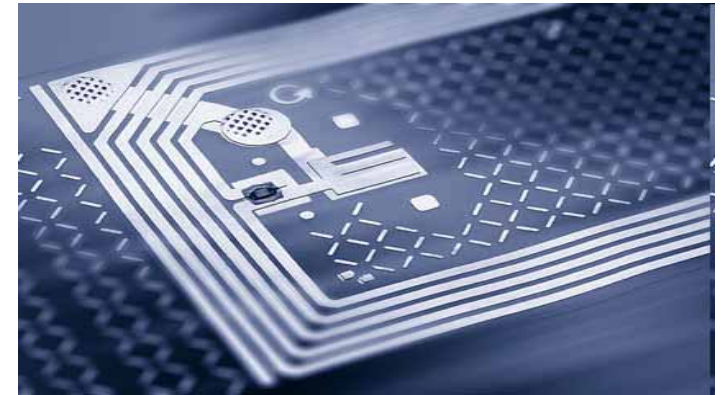
Meet the people who can help  
advance your infrastructure



# IBM Asset Management Product Roadmap 2010

## IBM Real-time Asset Locator

- IBM Real-time Asset Locator allows Maximo customers to manage and trigger Asset events based on the real-time location of an asset from within the Maximo Asset Management
- IBM Real-time Asset Locator provides Maximo clients the ability to access the location of assets using RFID and other supported real-time location technologies. Support for multiple sensor solutions (Ultrasound, RFID, WiMax, etc.)
- Improves compliance support in highly regulated markets where events must be triggered based on locations.
- In highly regulated industries, like Healthcare and Life Sciences, the location of assets may trigger specific service management and disposition rules





# Maximo Asset Management Product Roadmap 2010

## Maximo Space Planning for Facilities Management

Integrated Computer Aided Facilities Management (CAFM) with Maximo Asset Management to address the challenges faced by Facilities Managers:

- Increased emphasis on employee mobility and flexibility
- Total cost of occupancy is an organization's 2nd largest cost
  - Reduce costs by managing occupancy levels
  - Track energy costs based on building usage/occupancy

### Key Capabilities

- *Space Management & Accounting*
- *IT Infrastructure Management*
- *LAN and telecom information*
- *Move Management*
- *Occupancy Management*
- *Business continuity and safety information*
- *Mechanical, Electrical, Plumbing*
- *Lock & Key Management*
- *Building Infrastructure Management*
- *Business Resumption/Contingency Planning*
- *Hazardous Condition Tracking*



**Pulse2010**

Meet the people who can help  
advance your infrastructure



# Maximo Asset Management Product Roadmap 2010

## Maximo for Data Center Infrastructure Management

- Data Center Infrastructure Management is the process of managing the overall physical environment of the data center including the areas of equipment, space, power, environmental and network connectivity
  - Auto Allocate new hardware based on space/power requirements
  - What-if scenarios/Forecasting for future configurations
  - Change management Impact analysis
  - Complex Analysis/Reporting tools
- Economic and environmental factors require increased focus on managing existing Data Centers



**Pulse2010**

Meet the people who can help  
advance your infrastructure



# Maximo Asset Management Product Roadmap 2010

## Maximo for Healthcare

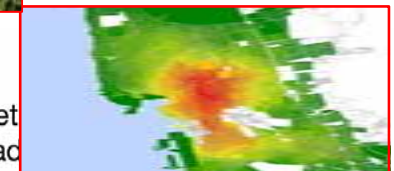
- Interface to ECRI Institute Clinical Equipment Web Services
  - ECRI interface provides real-time access to the AlertsTracker, a repository for hazard and recall alerts on medical devices
  - Leverage AlertsTracker to identify, within Maximo, any equipment on the hospital's inventory under a hazard and recall alert.
  - Automated Maximo actions, such as Work Orders to deal with affected equipment.
- Future capabilities:
  - Joint Commissions (JC) compliance reports:
    - JC requires hospitals to identify, record and report on all maintenance, inspection, and testing activities associated with Biomed and facilities equipment in its inventory.
    - Provide additional Maximo Out of the Box reports to support these JCAHO requirements
  - Healthcare start center and KPIs
    - Additional Healthcare Start Center roles
    - Includes Industry Specific KPIs, i.e. PMs Completed facilitate Healthcare focused Service and Asset Management.
  - Equipment Risk Assessment
    - JC requires hospitals to evaluate new types of Biomed and facilities equipment before initial use to determine Life-Safety impact.
    - Additional Maximo fields to support these requirements.



# Maximo Asset Management Product Roadmap 2010/2011

## Maximo Industry Solutions 7.x

- *Transportation*
  - State & Local Government
  - Tires, Replacement Modeling, GSA Leases/reporting
- *Oil & Gas*
  - Permit to Work
  - Manifesting
- *Utilities*
  - Intelligent Utility Networks
  - Revenue meter management
- *Asset Configuration Management*
  - Fleet planning/Maintenance forecasting
  - Provide Minimum Equipment List
- *Nuclear Power*
  - Procurement Engineering
- *Spatial (GIS)*
  - Support for Linear Assets
  - Mobile Dispatching

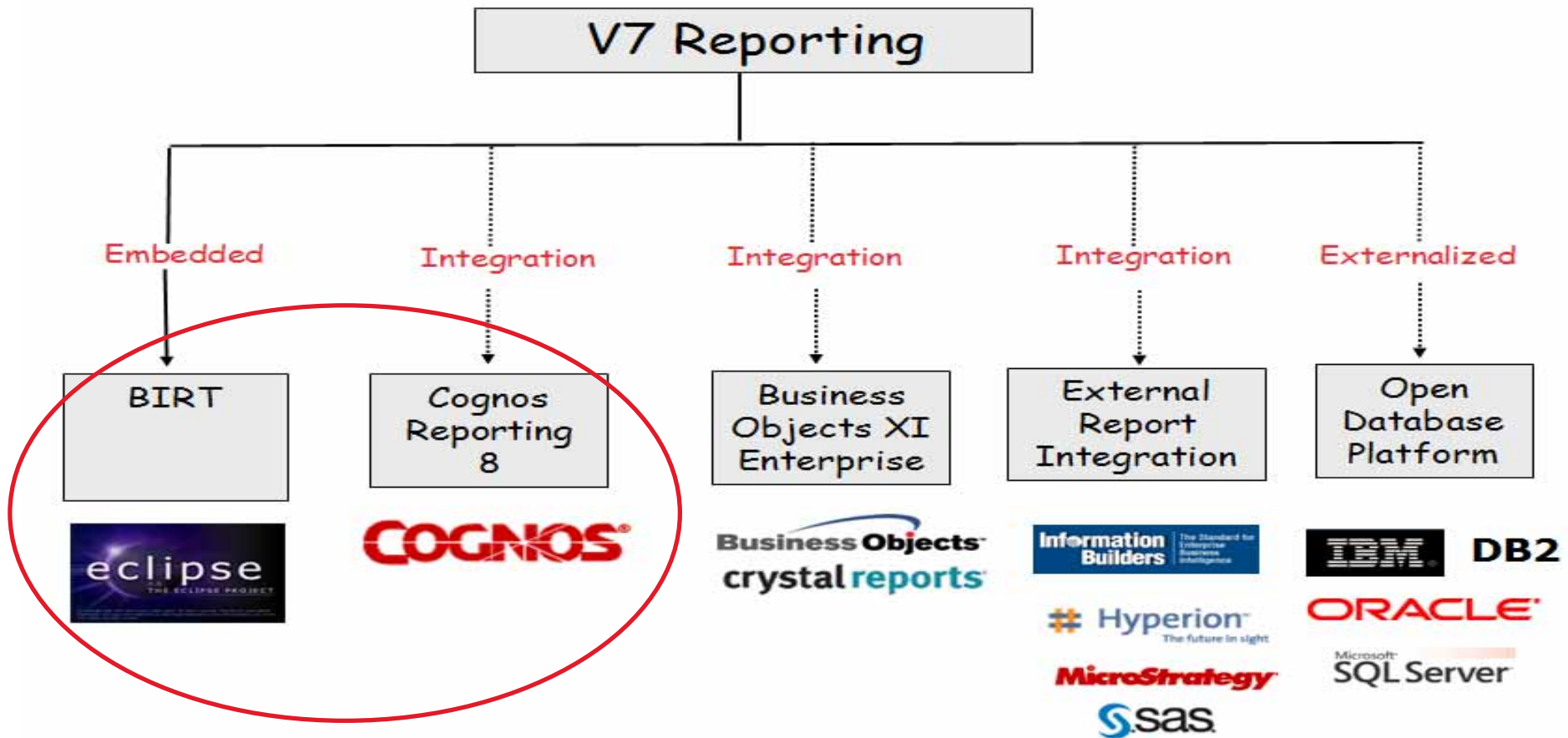


All dates are estimates and specific content is subject to change.

Meet  
ac

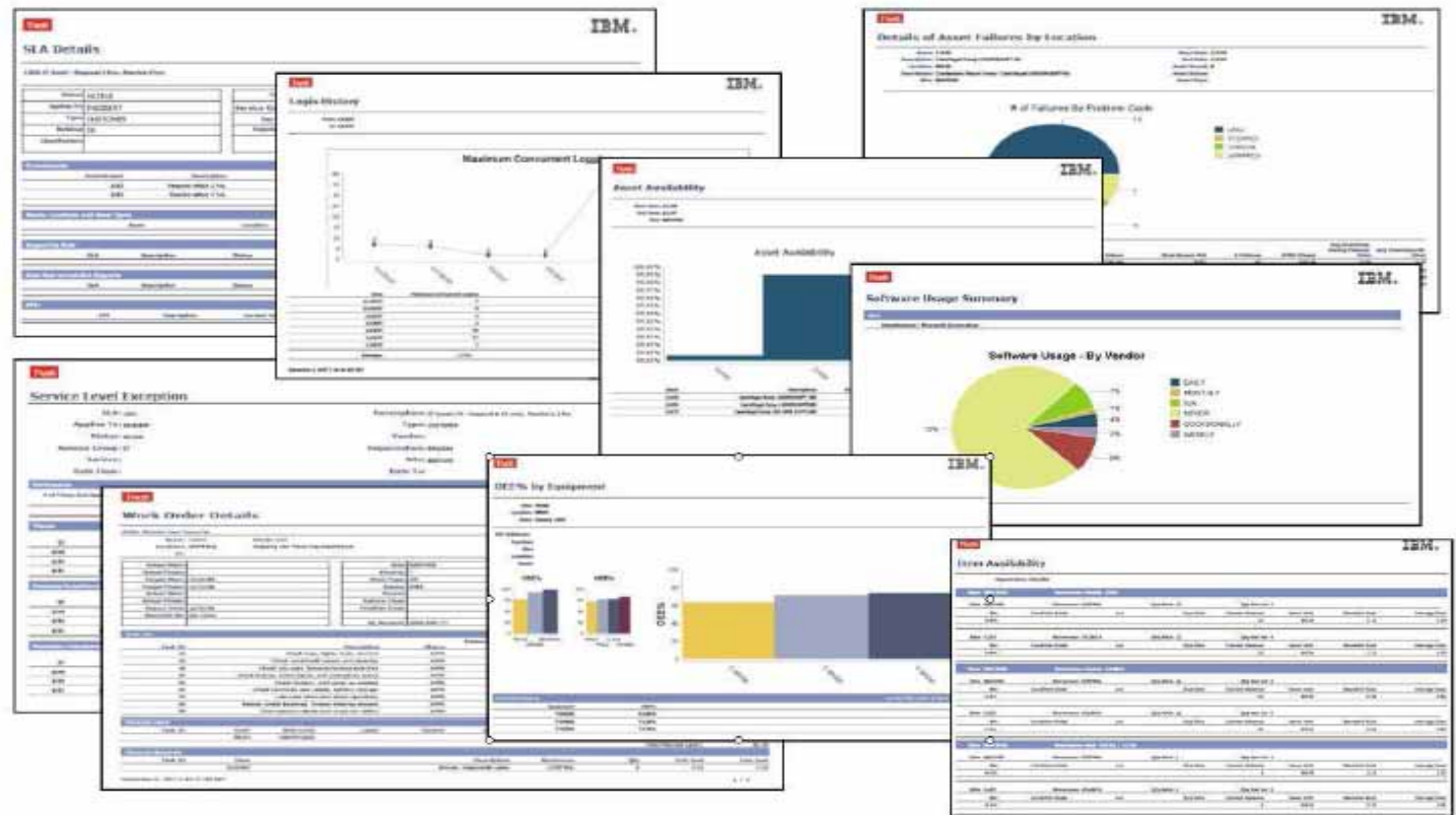
# Reporting Options: Maximo 7

Numerous Reporting Options in Maximo 7 to analyze powerful Maximo data



# BIRT V7 Embedded Reporting Tool: Key Enablers

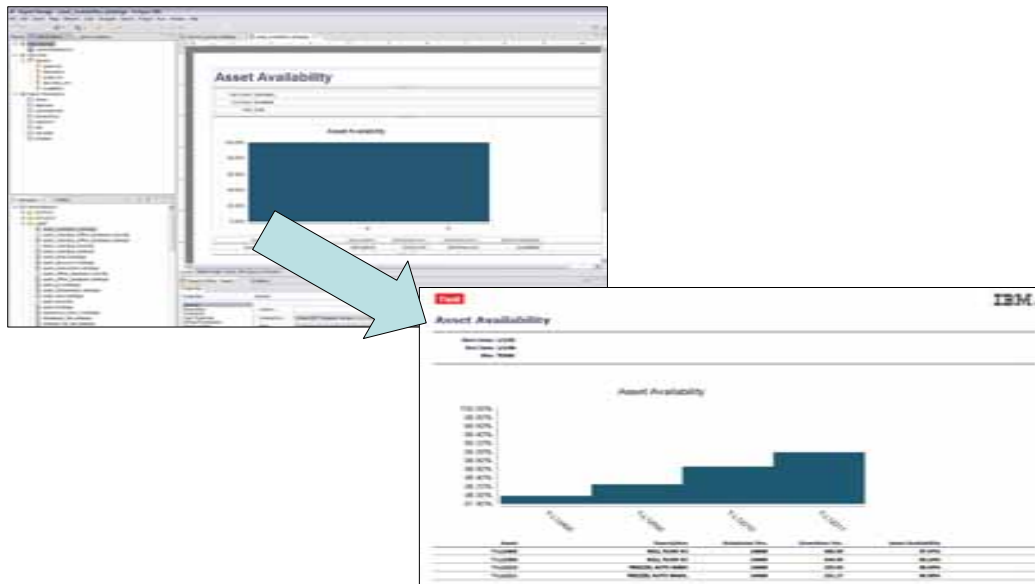
1. Configurability
2. Seamless Integration
3. Ease of Use





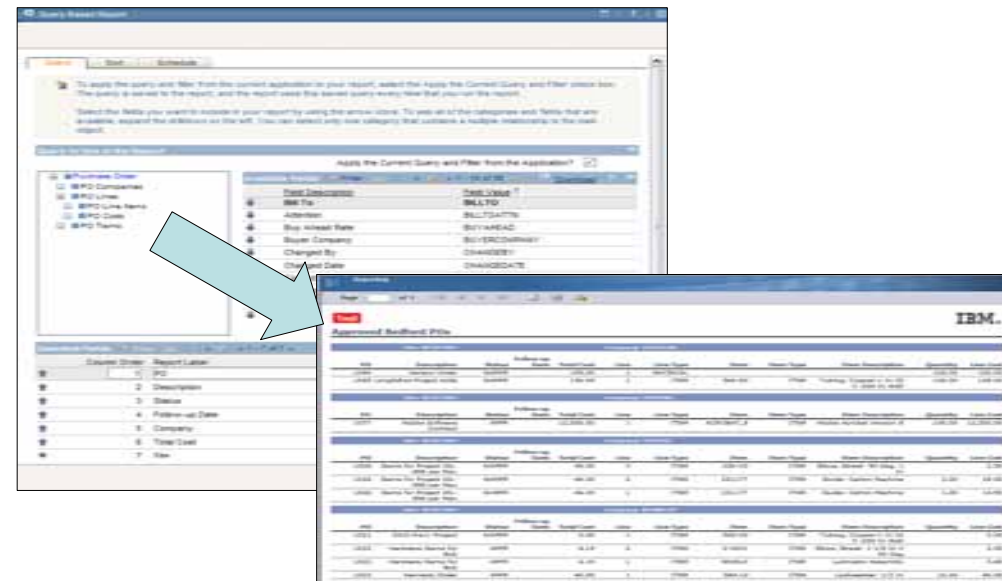
# Version 7 BIRT Report Types

Enterprise, Formatted Reports  
for *Heavy, Multi-User* Access



Created in BIRT Report Designer  
Requires Database/Java Skills  
Fixed Content/Format

Ad Hoc, Dynamic Reports  
for *Individual Use*



Created on Fly within Maximo Applications  
No Database/Java Skills Needed  
Variable Content/Format

# Cognos Integration Value: Visibility

Visibility of Cognos Reports within Maximo

Work Order Tracking

Reports

Select a report from the list, or click Create Report to create an ad hoc report.

On Demand Reports | Scheduling Status

Reports to Run | Filter | 1 - 5 of 9 | Download

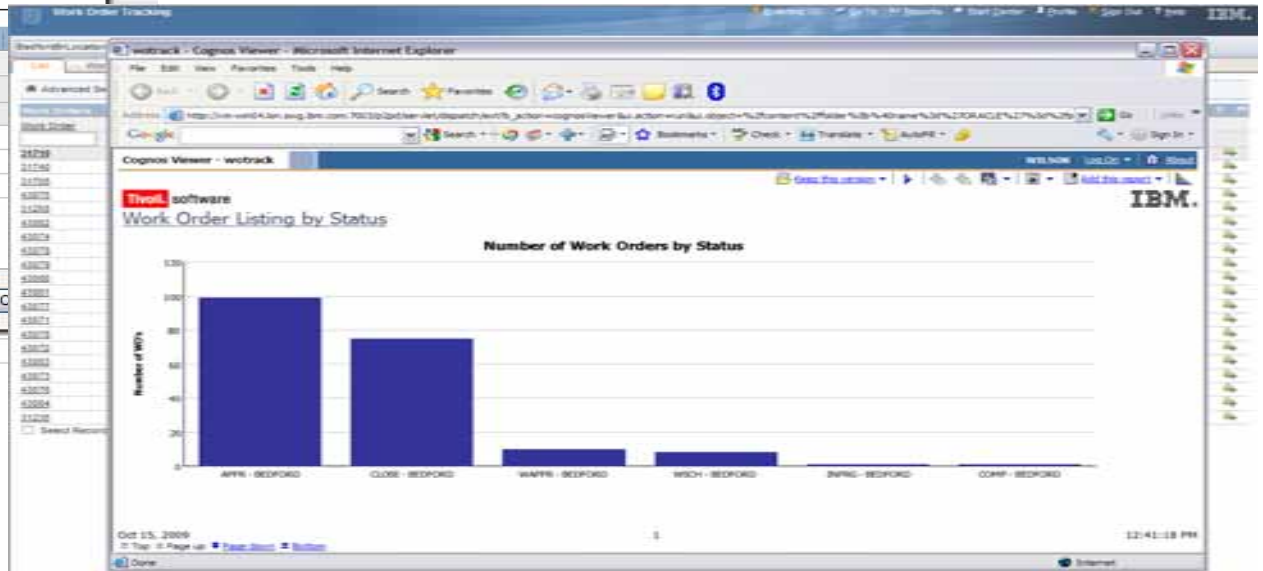
Description

- Cognos Overdue Work Orders
- Cognos Work Order Listing by Status
- Estimated vs Actual Work Order Costs
- Open Work Orders and PM
- Work Order Details

Create Report

Inspect and Repair Pump as Required REPAIR

Synchronization of Security Groups, Dynamic Report Display



Cognos Demo and Product Information:

- <http://www-01.ibm.com/software/data/cognos/products/cognos-8-business-intelligence/reporting.html>



## Changing Actuate IBM Relationship

- Effective 12/31/2010, IBM will no longer distribute Actuate products or updates to Actuate products
  - Distribution of Actuate 9 for Clients Upgrading to Maximo 7 ends 7/30/2010
- Distribution of Actuate Products that will be discontinued includes
  - iServer
  - erdPro
  - eSpreadsheet
  - Actuate Integration Files
- Clients with existing Actuate licenses in Maximo 5, 6 or 7 can continue to utilize the Actuate Product



## Looking ahead: Leveraging IBM Technology

- Leverage other IBM products and technology to add-value and address customer requirements
  - Examples include:
    - **WebSphere Sensor Events**/Location Awareness Components (returnable assets)
    - **iLog** – graphical controls, optimization technology, rules based decision engine
    - **Optim** – archiving and purge of Maximo data (expand supported objects)
    - **FileNet** – management of version controlled documents, attachments in Maximo
    - **MDM** – centralized data management repository, ‘owner’ of source data
    - **Cognos TM1** – budgeting, capital projects, analytics
    - **ITM** – system monitoring, Maximo agents, MEO
    - **Lotus** – SameTime (instant messaging) integration
    - **SPSS** – predictive analytics
- Continue platform support (extend and leverage additional functionality)
  - DB2
  - Websphere
  - Tivoli Access Manager

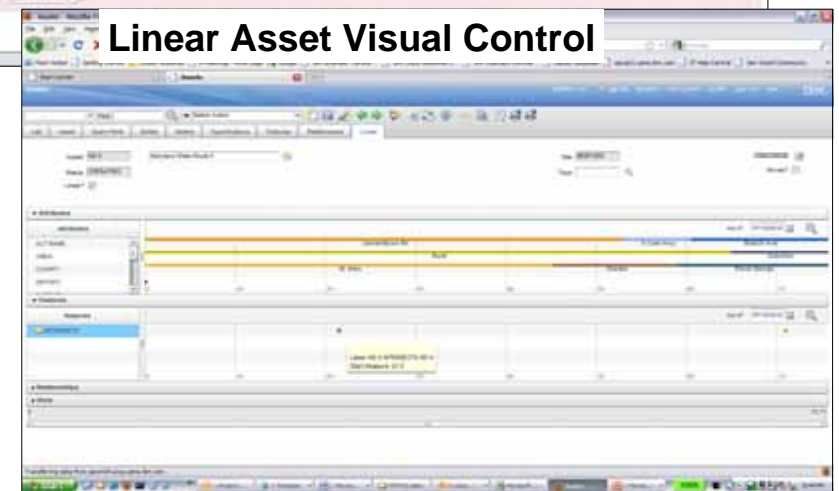
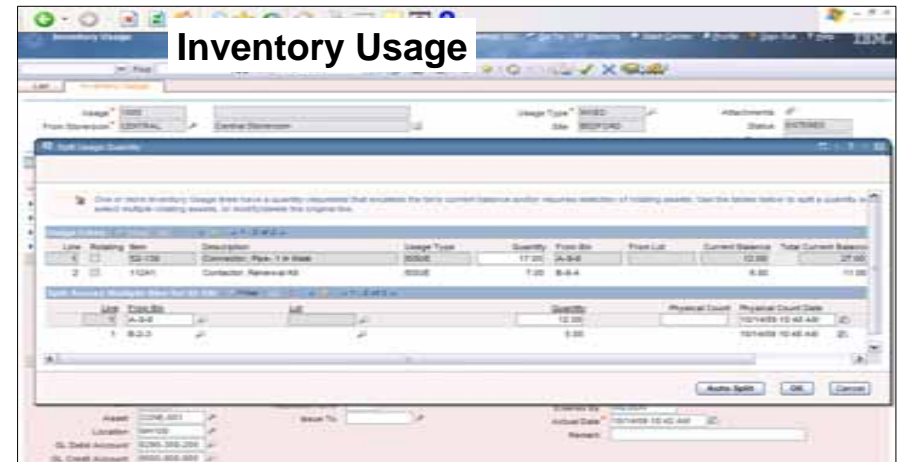
\* For future consideration

Meet the people who can help  
advance your infrastructure

# Maximo Asset Management Product Roadmap 2011

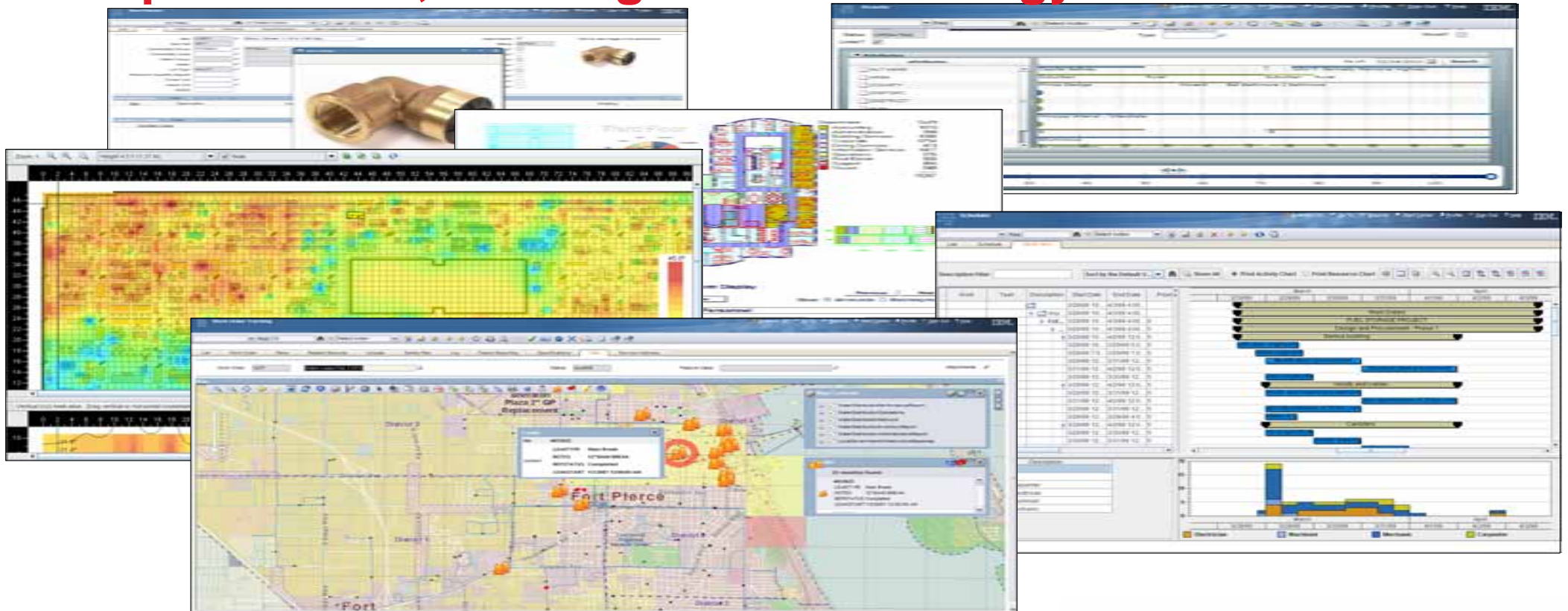
## Maximo Asset Management 7.5 – Q2011

- Inventory & Materials Management
  - LIFO/FIFO inventory costing
  - Hard/Soft Material Reservations
  - New Inventory Usage application (status-able document, used for Issuing & Transferring items)
- Enhanced Purchasing & Receiving
  - PO Revisioning
  - View Receipt lines from within PO
  - RFQ – allow item comparison (quotes) in base currency
- Work and Asset Management
  - Job Plan Versioning/Revisioning
  - Asset Templates – easily generate multiple assets from template
  - Work Order Assignment tab – labor assignments
  - Cross-Site Work Orders – supports work on assets from another site



Meet the people who can help  
advance your infrastructure

# Looking ahead: Focus on Innovation - Visualization, Optimization, Leverage IBM technology





## Don't miss these valuable sessions to learn more:

### Maximo for Facilities Management

One of the largest expenses of running a business today is the cost of providing and maintaining facilities. IBM recently announced an agreement with Drawbase software to add space management and space planning capabilities into Maximo. Hear how this extends the facilities solution to include move management, space utilisation, occupancy tracking, capacity planning, and lock and key management.

Kim Woodbury  
Maximo Product Management

Session 3b - Track 8

1:25 – 2:15 Wed. 28 July

### Maximo Planning & Scheduling

Using Maximo Asset Management Scheduler, maintenance planners can create schedules that contain work orders and tasks that meet user-defined criteria.

This presentation will cover the major features and benefits of the current version and also preview the key elements of the new version

Jerry Miller  
Maximo Product Architect

Session 5a – Track 7

3:40 – 4:30 Wed. 28 July

### Maximo Spatial Asset Management

GIS functionality in Maximo is designed to extend and enhance users' ability to capture, analyze, and display assets, locations, and work orders in a geospatial perspective.

The main focus of this presentation will be to demonstrate the functionality of Maximo Spatial and discuss the product roadmap and ongoing development of this product.

Jerry Miller  
Maximo Product Architect

Session 7a – Track 7

10:35 – 11:25 Thur. 29 July

### Maximo Everyplace

Customers who want to access Maximo via an iPhone or iPod Touch can use Maximo Everyplace to configure applications in the Application Designer and then use those applications wherever they have network connectivity, without installing anything on the device. You'll see this new functionality in action and learn how it complements and can coexist in a customer implementation with Maximo Mobile.

Lori Landesman  
Maximo Product Architect

Session 9a – Track 7

1:10 – 2:00 Thur. 29 July

**Thank You!**

**PulseANZ** 2010 



# Maximo Asset Management Product Roadmap 2011

## Maximo for Property Performance Management Solution (PPMS)

- **Data repository for Building Information**

- Costs
- Occupancy
- Usage
- Property Rights
- Utility Bills
- Carbon
- Waste



- **Provides basis for benchmark / comparison and reporting across entire property portfolio**
- **Easily configurable to match organization type and geographic locality**



Availability dates TBD

# Pulse2010

Meet the people who can help  
advance your infrastructure



# Trademarks and disclaimers

Intel, Intel logo, Intel Inside, Intel Inside logo, Intel Centrino, Intel Centrino logo, Celeron, Intel Xeon, Intel SpeedStep, Itanium, and Pentium are trademarks or registered trademarks of Intel Corporation or its subsidiaries in the United States and other countries. Linux is a registered trademark of Linus Torvalds in the United States, other countries, or both.

Microsoft, Windows, Windows NT, and the Windows logo are trademarks of Microsoft Corporation in the United States, other countries, or both. IT Infrastructure Library is a registered trademark of the Central Computer and Telecommunications Agency which is now part of the Office of Government Commerce. ITIL is a registered trademark, and a registered community trademark of the Office of Government Commerce, and is registered in the U.S. Patent and Trademark Office. UNIX is a registered trademark of The Open Group in the United States and other countries. Java and all Java-based trademarks are trademarks of Sun Microsystems, Inc. in the United States, other countries, or both. Other company, product, or service names may be trademarks or service marks of others. Information is provided "AS IS" without warranty of any kind.

The customer examples described are presented as illustrations of how those customers have used IBM products and the results they may have achieved. Actual environmental costs and performance characteristics may vary by customer.

Information concerning non-IBM products was obtained from a supplier of these products, published announcement material, or other publicly available sources and does not constitute an endorsement of such products by IBM. Sources for non-IBM list prices and performance numbers are taken from publicly available information, including vendor announcements and vendor worldwide homepages. IBM has not tested these products and cannot confirm the accuracy of performance, capability, or any other claims related to non-IBM products. Questions on the capability of non-IBM products should be addressed to the supplier of those products.

All statements regarding IBM future direction and intent are subject to change or withdrawal without notice, and represent goals and objectives only.

Some information addresses anticipated future capabilities. Such information is not intended as a definitive statement of a commitment to specific levels of performance, function or delivery schedules with respect to any future products. Such commitments are only made in IBM product announcements. The information is presented here to communicate IBM's current investment and development activities as a good faith effort to help with our customers' future planning.

Performance is based on measurements and projections using standard IBM benchmarks in a controlled environment. The actual throughput or performance that any user will experience will vary depending upon considerations such as the amount of multiprogramming in the user's job stream, the I/O configuration, the storage configuration, and the workload processed. Therefore, no assurance can be given that an individual user will achieve throughput or performance improvements equivalent to the ratios stated here.

Prices are suggested U.S. list prices and are subject to change without notice. Starting price may not include a hard drive, operating system or other features. Contact your IBM representative or Business Partner for the most current pricing in your geography.

Photographs shown may be engineering prototypes. Changes may be incorporated in production models.

© IBM Corporation 1994-2010. All rights reserved.

References in this document to IBM products or services do not imply that IBM intends to make them available in every country.

Trademarks of International Business Machines Corporation in the United States, other countries, or both can be found on the World Wide Web at <http://www.ibm.com/legal/copytrade.shtml>.