



## IBM Smart Archive

Take A Smarter Approach to Archiving with IBM

# PulseANZ2010

Meet the people who can help  
advance your infrastructure





# Trademarks and disclaimers

Intel, Intel logo, Intel Inside, Intel Inside logo, Intel Centrino, Intel Centrino logo, Celeron, Intel Xeon, Intel SpeedStep, Itanium, and Pentium are trademarks or registered trademarks of Intel Corporation or its subsidiaries in the United States and other countries./ Linux is a registered trademark of Linus Torvalds in the United States, other countries, or both.

Microsoft, Windows, Windows NT, and the Windows logo are trademarks of Microsoft Corporation in the United States, other countries, or both. IT Infrastructure Library is a registered trademark of the Central Computer and Telecommunications Agency which is now part of the Office of Government Commerce. ITIL is a registered trademark, and a registered community trademark of the Office of Government Commerce, and is registered in the U.S. Patent and Trademark Office. UNIX is a registered trademark of The Open Group in the United States and other countries. Java and all Java-based trademarks are trademarks of Sun Microsystems, Inc. in the United States, other countries, or both. Other company, product, or service names may be trademarks or service marks of others. Information is provided "AS IS" without warranty of any kind.

The customer examples described are presented as illustrations of how those customers have used IBM products and the results they may have achieved. Actual environmental costs and performance characteristics may vary by customer.

Information concerning non-IBM products was obtained from a supplier of these products, published announcement material, or other publicly available sources and does not constitute an endorsement of such products by IBM. Sources for non-IBM list prices and performance numbers are taken from publicly available information, including vendor announcements and vendor worldwide homepages. IBM has not tested these products and cannot confirm the accuracy of performance, capability, or any other claims related to non-IBM products. Questions on the capability of non-IBM products should be addressed to the supplier of those products.

All statements regarding IBM future direction and intent are subject to change or withdrawal without notice, and represent goals and objectives only. Some information addresses anticipated future capabilities. Such information is not intended as a definitive statement of a commitment to specific levels of performance, function or delivery schedules with respect to any future products. Such commitments are only made in IBM product announcements. The information is presented here to communicate IBM's current investment and development activities as a good faith effort to help with our customers' future planning.

Performance is based on measurements and projections using standard IBM benchmarks in a controlled environment. The actual throughput or performance that any user will experience will vary depending upon considerations such as the amount of multiprogramming in the user's job stream, the I/O configuration, the storage configuration, and the workload processed. Therefore, no assurance can be given that an individual user will achieve throughput or performance improvements equivalent to the ratios stated here.

Prices are suggested U.S. list prices and are subject to change without notice. Starting price may not include a hard drive, operating system or other features. Contact your IBM representative or Business Partner for the most current pricing in your geography.

Photographs shown may be engineering prototypes. Changes may be incorporated in production models.

© IBM Corporation 1994-2010. All rights reserved.

References in this document to IBM products or services do not imply that IBM intends to make them available in every country.

Trademarks of International Business Machines Corporation in the United States, other countries, or both can be found on the World Wide Web at <http://www.ibm.com/legal/copytrade.shtml>.



## Today's Agenda

- **The Imperative to Build a Smarter Archive Strategy**
  - Information Explosion
  - Information and Infrastructure Chaos
  - Archiving is No Longer an Option
- **IBM Smart Archive Strategy**
- **Introducing IBM Information Archive**
- **Existing and New Solutions Being Announced**
- **Why IBM**







# Information Explosion

## Information Week Survey:

**70%** say Regulations drive up storage demands, businesses realizing they **must** classify, manage, delete data - not just keep adding storage



**Volume**  
Every day, **15 petabytes** of new information are being generated. By 2010, the amount of digital information will grow to 988 exabytes



**Variety**  
**80%** of new data growth is unstructured content, generated largely by email, with increasing contribution by documents, images, and video and audio.




**Velocity**  
An average company with 1,000 employees spends **\$5.3 million** a year to find information stored on its servers. **42%** of managers say they use the wrong information at least once per week.

Information Week, "State Of Enterprise Storage Changing Priorities, Changing Practices", Jan 2009. Delahunty, Steve  
IDC: Expanding Digital Universe, 2007  
IDC: "The Hidden Costs of Information Work" March 2005  
Accenture: Managers Say the Majority of Information Obtained for Their Work is useless 2007 [http://newsroom.accenture.com/article\\_display.cfm?article\\_id=4484](http://newsroom.accenture.com/article_display.cfm?article_id=4484)



# Information Chaos Creates Many Challenges

Valued information is buried beneath too much unnecessary information  
(over-retained, duplicated, irrelevant)



**The keep  
everything  
forever model  
has failed**

**No information visibility  
to unlock what, why  
where in a trusted  
accurate manner**

**Runaway storage and  
infrastructure costs,  
with power, space and  
budget challenges**

**Inability to produce  
critical information under  
difficult scenarios and  
deadlines**

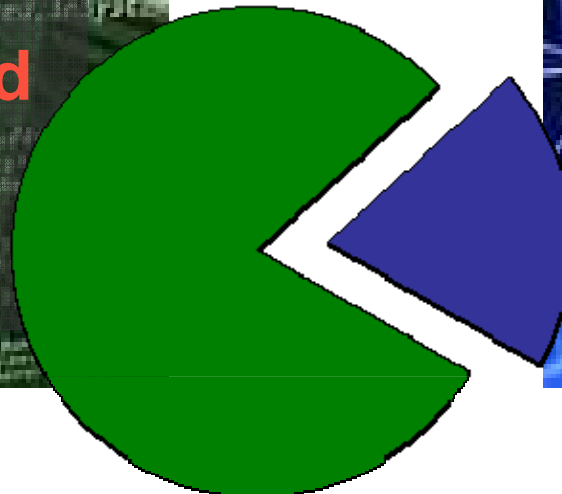




**More than 80% of information is unnecessary, and so unnecessary information eclipses necessary information**

**Unnecessary Information**

- is **over-retained**
- is **irrelevant**
- is **duplicated**



**Necessary Information**

- is **valued**
- requires **governance**
- is **legally relevant**

**How much of your information is over-retained, irrelevant or duplicated?**

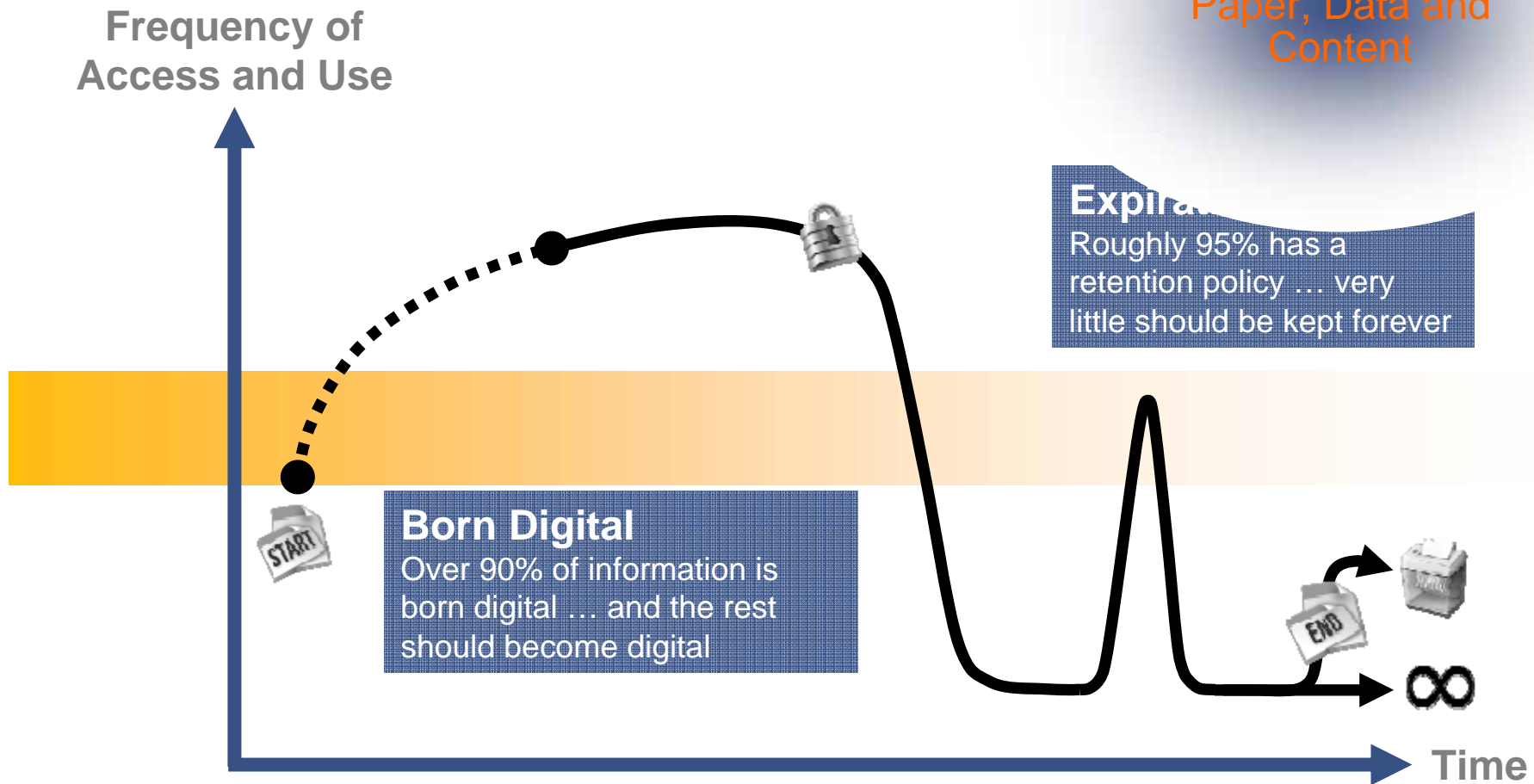
**70% ... 80% ... 90% ... How do you know?**

**Why would you want to keep any information that is not necessary to keep?**



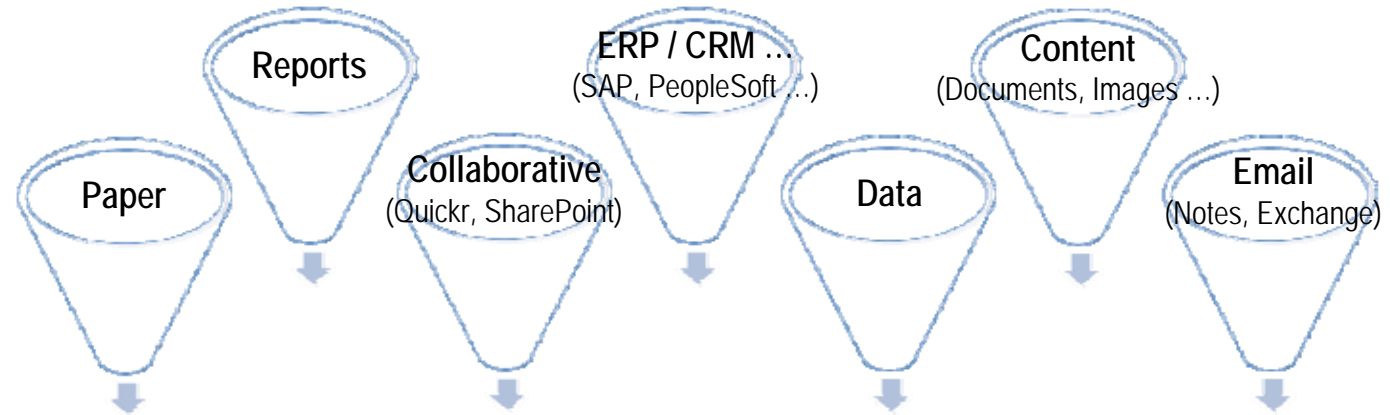
# Information Has a Lifespan Requiring Disposition

A Standard Model for Paper, Data and Content





# IBM Smart Archive Strategy



## Value Added Services

- Optimisation Services
- System Services
- Managed Services
- Reference Architecture
- Information Governance

**Cloud Ready  
Archive Storage with  
Optional ECM**

## Optimised and Unified Assessment, Collection and Classification

### Flexible and Secure Infrastructure with Unified Retention and Protection

**On Premise**  
(Custom Config)



**Appliance**  
(Pre-Config)



**As A Service**  
(SaaS, Multiple Options)



## Integrated Compliance, Records Management, Analytics and eDiscovery





## IBM Smart Archive ...

### The “Keep Everything Forever Model Has Failed”

#### ... a Smarter Approach is Needed

- **Optimised and Unified Ingest**
  - Enable a deeper understanding of what information to archive through discovery and analytics based assessment technologies. Eliminate point solution complexity and cost by unifying data and content archiving through common collection (ingest) and classification technologies.
- **Flexible and Secure Infrastructure**
  - Enable cost-optimised retention with unified, flexible, secure and policy aware infrastructure.
    - Develop policies, optimise and protect with business analytics and optimisation, business continuity and resiliency, archive and storage management, and managed services.
  - Speed time to value through multiple modular yet integrated solutions including choice of management and delivery models based on a common information lifespan and policies.
    - Traditional on-premise software, preconfigured appliance, software-as-a-service, cloud ready and hybrid options
- **Integrated Compliance, Records Management, Analytics and eDiscovery**
  - Reduce risk, respond more quickly to legal inquiries, establish trust and leverage information using integrated compliance, analytics, records management and eDiscovery software.

**Unites the power and value of IBM  
Software, Systems and Services.**





## Today's Agenda

- The Imperative to Build a Smarter Archive Strategy
  - Information Explosion
  - Information and Infrastructure Chaos
  - Archiving is No Longer an Option
- IBM Smart Archive Strategy
- Introducing IBM Information Archive
- Existing and New Solutions Being Announced
- Why IBM



# Introducing IBM Information Archive Next Generation Information Retention Solution

A **universal**, **scalable**, and **secure** storage repository for structured and unstructured information

A fully integrated archive **appliance**

Addressing the complete information retention needs of **mid-size** and **enterprise** clients

Application support including IBM ECM and Optim with **policy harmony**







# Positioning TSM and Information Archive

## Tivoli Storage Manager Software

- Full featured storage management software offering
  - Backup/recovery/HSM/DR and much more
- Simple archive Non Compliant – (compliant/policy-based retention data must use SSAM)
- Software only- so sits in existing environment
- Built around recovery

## System Storage Archive Manager Software

- Archive only selected information, based on business value
- Ensure the information can be easily retrieved later
- Offers maximum / strict retention policies for archived information
- Ensure the information is unaltered and retained until policy expiration
- Move to lowest cost storage when possible combining disk and tape with lowest cost of ownership
- Can not control access and alteration of data from outside of itself

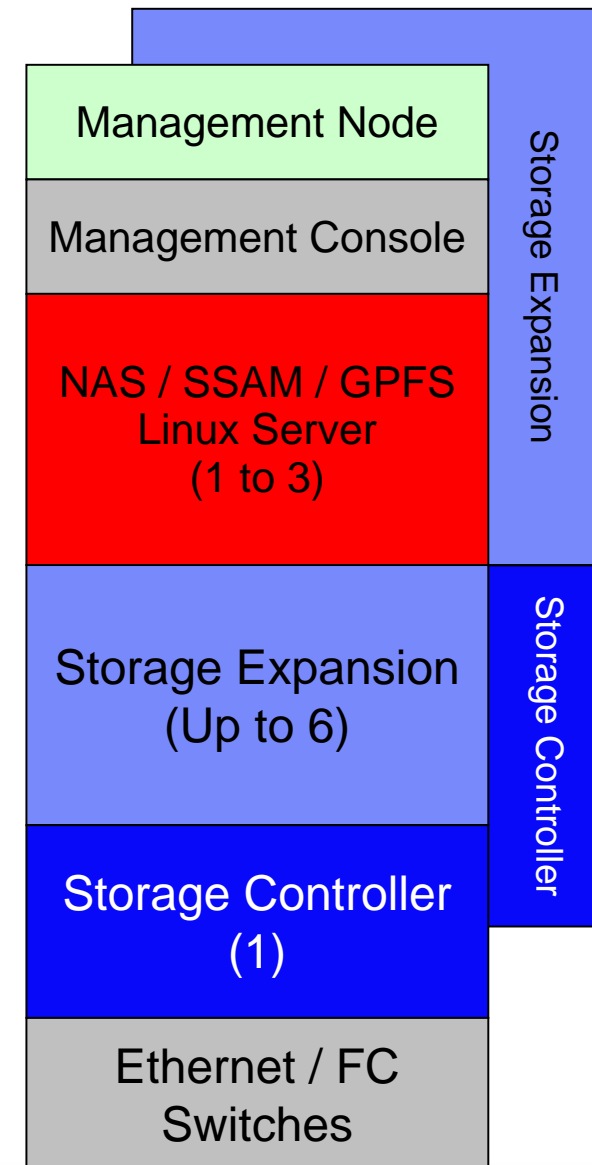
## Information Archive Solution

- All the benefits of SSAM plus:
- Tightly integrated bundle of hardware, software and installation services
  - Self contained – little setup required – quicker-time-to-value
  - Wizard-based management features
  - Additional collection options
  - Offers flexible retention policy options including Basic, Medium & Maximum
  - Accessible via industry standard NFS file protocols
  - Additional patent-pending tamper protection

# Inside IBM Information Archive

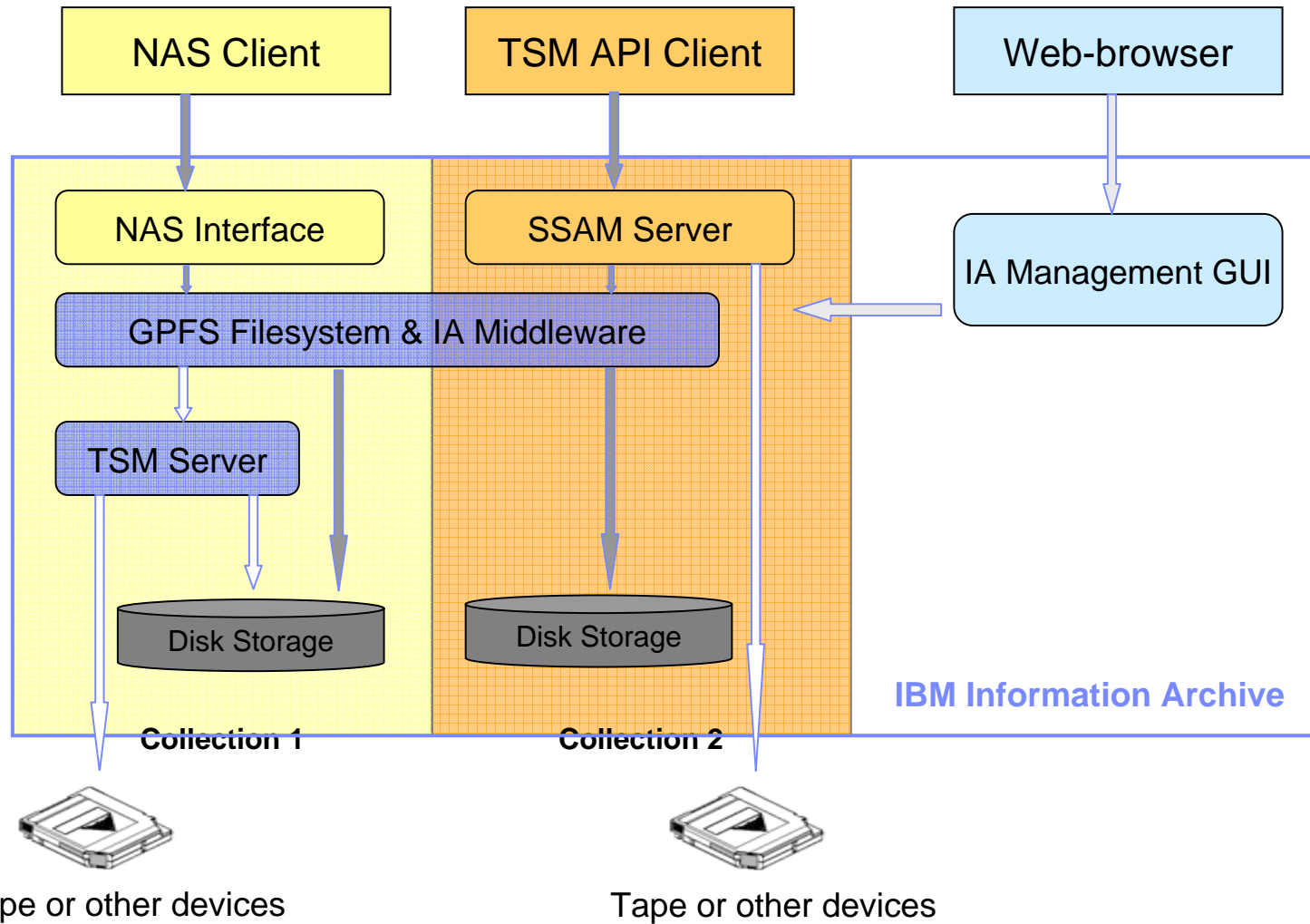


- **Hardware**
  - Dual 4-core clustered Linux servers
  - Integrated (closed) appliance
  - Internal IP and SAN networks
  - SATA storage
    - RAID 6, 402 TB max usable
  - PBs of external tape (optional)
  - HW-based disk replication
- **Software**
  - Tivoli Management Software
  - System Storage Archive Manager
  - Tivoli Storage Manager – HSM
  - General Parallel File System
- **Security**
  - Role-based administration
  - No root access in compliant mode





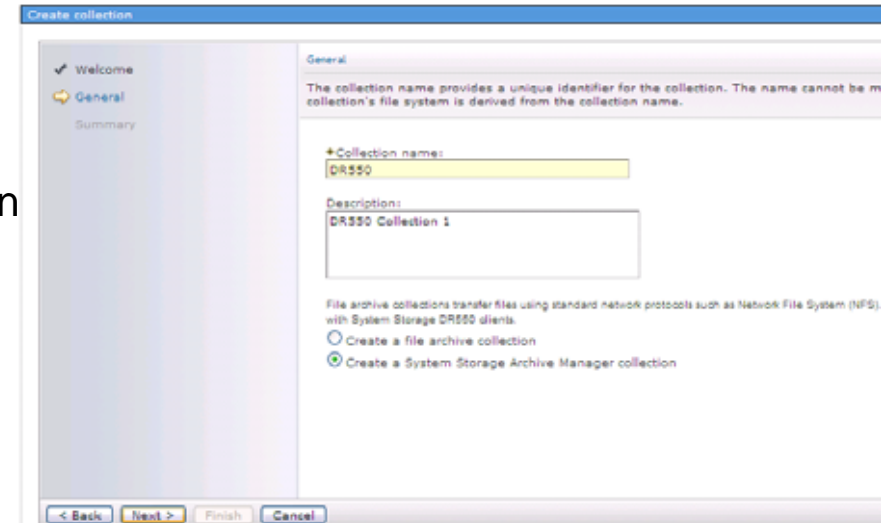
# IA High Level Architecture





# Archiving Documents

- TSM API or TSM Archive Client
  - Managed by SSAM server
  - SSAM retention policies and functions
  - Supports time and event based retention and retention holds
  - 2 storage tiers
    - Disk – compression/deduplication
    - Tape (optional)
  
- NAS protocols (File Archive)
  - NFS
    - Supports time and event based retention and retention holds via:
      - Auto-protect with retention policies
      - NetApp SnapLock™ compatibility
      - Metadata files to control retention
  - 3 storage tiers
    - Tier 1 archive disk – high speed data transfer and ingestion (retention, ...)
    - Tier 2 archive disk – compression/deduplication
    - Tape (optional)

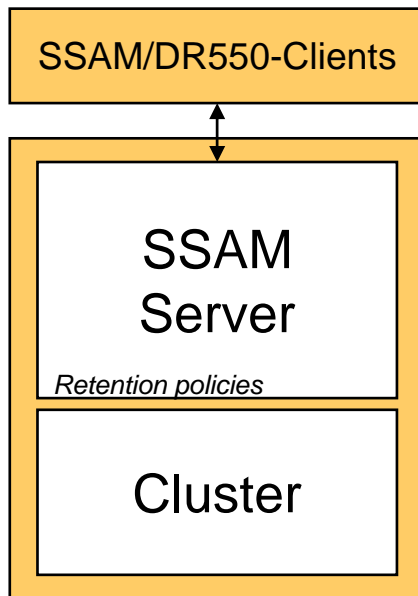




# IA Collection Overview

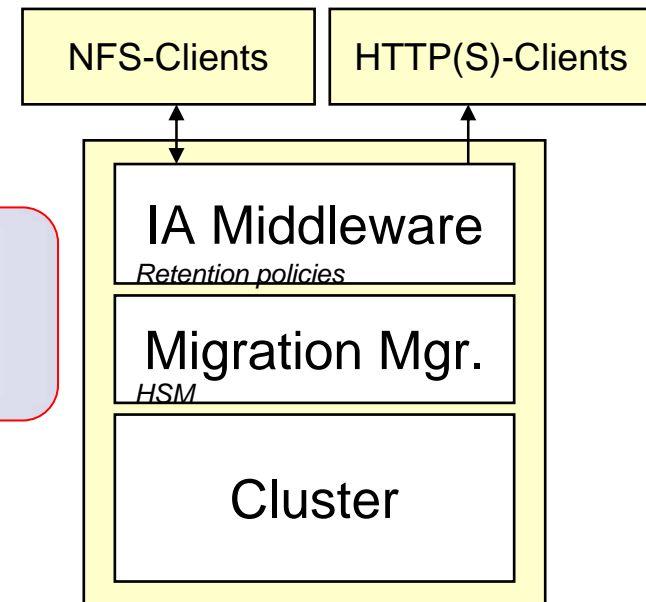
- IA collection concepts:
  - Collection represents an encapsulated set of archive data
  - Customize collections by value of the information, department, degree of protection, etc.
  - Collection consists of hardware & software components
  - Up to three clustered collections can be configured in one IA appliance (R1)
  - Collection has an external interface: NAS (NFS) or TSM API or B/A interface (SSAM)
  - High availability by synchronous or asynchronous replication to another disk controller

## SSAM / DR550 Collections



Type of collection is specified during implementation

## File Archive Collections



# Customizable Protection Levels

## Most Flexible and Most Comprehensive Data Retention Policies

### Basic Protection

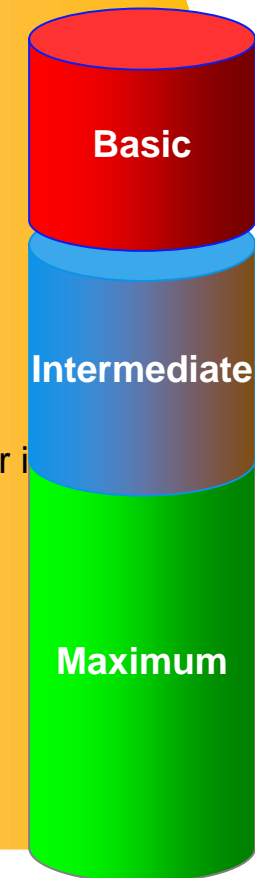
- Documents can be deleted before they expire
- Retention periods can be increased and decreased
- Documents with an extended retention because of a retention hold can be deleted
- You can modify the document protection option to one of the other levels at any time

### Intermediate Protection

- Documents cannot be deleted until they expire
- Retention periods can be increased and decreased
- Documents with an extended retention due to a retention hold cannot be deleted
- You can modify the document protection option to maximum at any time but cannot lower it to basic
- The collection cannot be deleted

### Maximum Protection

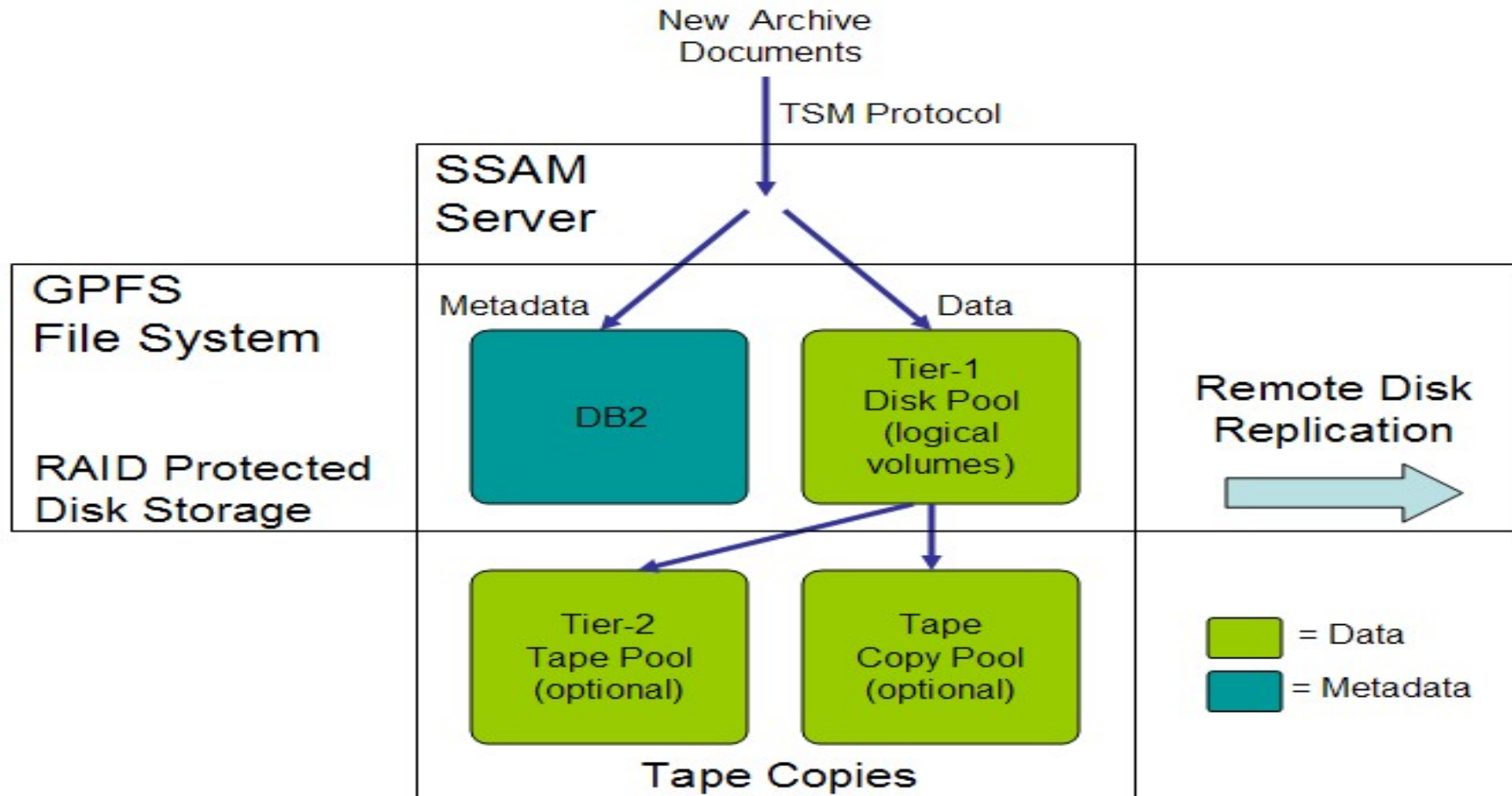
- Documents cannot be deleted until the end of their retention period
- Documents with an extended retention because of a retention hold cannot be deleted
- Document retention periods can be increased, but not decreased
- After it is enabled, you cannot modify the document protection option to one of the other levels
- The collection cannot be deleted
- This is SSAM collections' only level





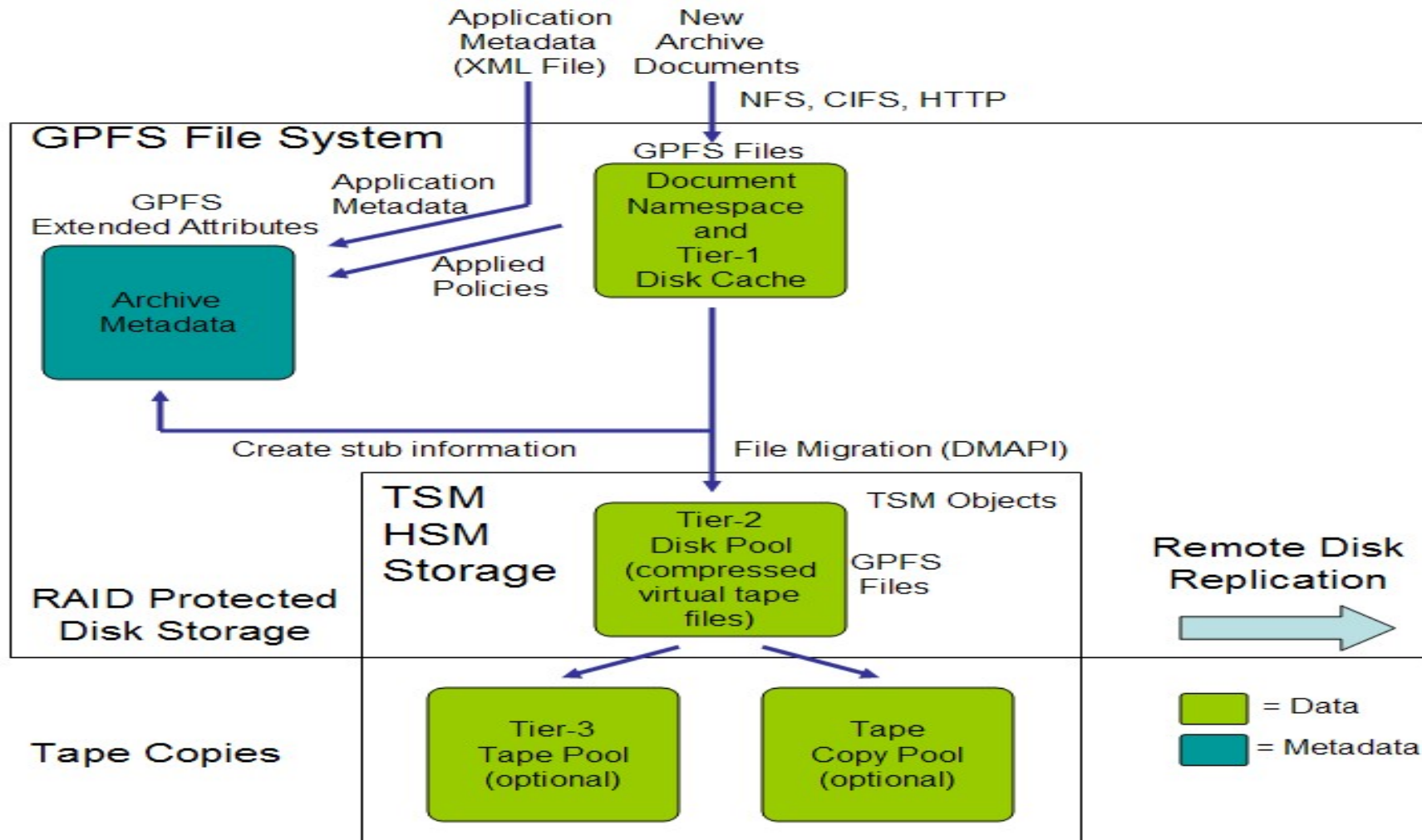


# SSAM Collection Architecture





# File Archive Collection Architecture



## IBM Information Archive - Flexible Retention Policy Management

*Archive Infrastructure Layer enables policy sharing while serving both disk and tape drives*

### Archive Infrastructure Layer

- Policy Based Retention with Sharing Enabled
- Tiered Storage Hierarchy Management
- Standard Ingest Interfaces
- Indexing and Search\*
- Automated Data Migration for Long Term Preservation

### Disk Storage Layer

- Low cost Storage
- De-Duplicating Storage
- High Performance Ultra Dense Storage

### Tape Storage Layer

- High Aerial Density Cartridges
- High Capacity Tape Frames
- WORM and Encryption Capabilities

**IBM Information Archive**



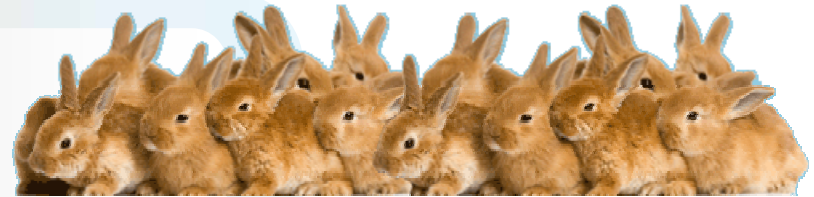




# Data Optimization Features

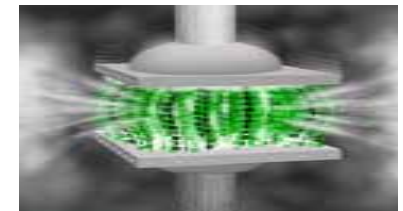
## Deduplication

Single instance storage of data



## Compression

Client side & tape compression can, on average, reduce the data's size by 60 - 90%



## Hierarchical Storage Management

Automatically distributes and manages information on disk, tape, or both





## Data Deduplication

- IA supports data deduplication on disk
  - Based on TSM 6 data deduplication technique
- For NAS collection: Data is deduplicated after migration to TSM Server
- For SSAM collection: Data is deduplicated after archived to SSAM
- Data is reduplicated when written to tape
- Recommendation: only use deduplication on disk when at least one original copy is available





# Advanced Data Protection Features

## Encryption

Encryption can provide added security for data storage and remote data transmission



## Enhanced Tamper Protection

Patent-pending feature eliminates root access



## Shredding

The destruction of deleted data, in non deduped, random access stgpools, to make it difficult to discover or reconstruct that data later.



# Advanced Data Protection Features

## Multiple Protection Levels

Basic to maximum protection levels address all possible data retention requirements

## Enhanced Disaster Recovery

Advance Copy Services increase the availability of archived documents and prevents data loss in the event of a disaster

## Redundancy

Clustered nodes & Redundant Array of Independent Disks (RAID) 6 to maintain data integrity even in the event of two disk failures.





## IA User Interface

- Centralized User Interface hosted by management node
- Provides functions for
  - User management and Role Assignment
  - TSM Server administration (via IAC)
  - Tivoli Common Reporting (TSM and IA reports)
  - IA Administration
    - IA appliance administration (configuration, monitoring)
    - IA collection administration (setting and behavior)
    - IA Service functions (collect logs, launch IBM Director)
    - IA Audit functions (manage and download audit logs)
- Accessible via browser (IE, FF)
  - <https://<mgmt-node>:9043/ibm/console>

Integrated Solutions Console Welcome nils

View: All tasks

- Welcome
- My Startup Pages

### Security

#### Users and Groups

- Administrative User Roles
- Administrative Group Roles
- Manage Users
- Manage Groups

### Troubleshooting

#### Tivoli Storage Manager

- Getting Started
- Manage Servers
- Health Monitor
- Enterprise Management
- Storage Devices
- Client Nodes and Backupsets
- Policy Domains
- Server Maintenance
- Reporting
- Disaster Recovery Management

#### Tivoli Common Reporting

- Work with Reports

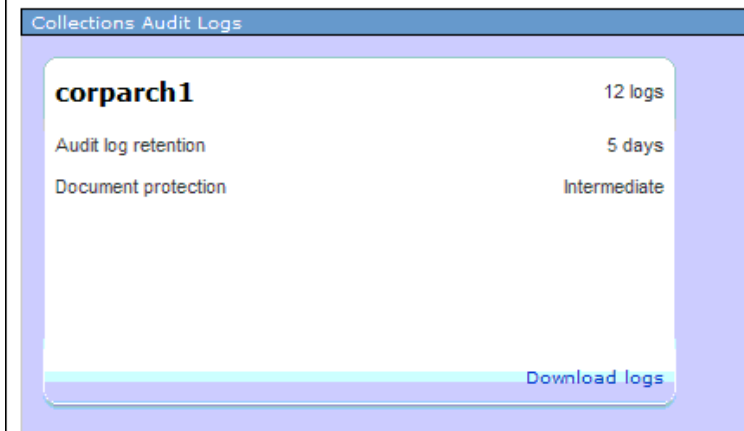
#### Information Archive Management

- Getting Started
- Health Monitor
- Collections
- System Management
- Audit Logs
- Service Management



## Admin Console – Audit Logs

- System generated, tamper-proof records of events
- Use to verify that documents are being stored in a way that meets your regulatory and legal compliance requirements
- Downloaded directly from Admin Interface or access remotely using NFS protocol
- Records are subject to the document protection level of their associated collection
  - Default retention of period is 5 years
  - Plain text system related events and document related events
    - Event chronology
    - Document type
    - File name
    - Owner name
    - Application name
    - Event status



## Key Features

Features	IBM Information Archive
Ease of Use	Appears as a file-server, simply drag and drop files to Information Archive.
Installation and Implementation	Information Archive is physically installed by a Certified Engineer. Quick configuration via wizards. Dynamically add storage.
User Interface	Single, task oriented GUI to manage the entire solution (+ CLI)
Application Interfaces	NFS, SSAM, CIFS*, HTTP read, FTP* – all within IA
Scalability (per Information Archive)	Supports billions of objects per collection – up to 3 collections (Archive into three separate collections )
Retention Policies	Accepts retention policies from applications (including ECM) or creates them (Event-based or time-driven) enabling policy harmony
Compliance / Security	Each collection can be configured with different protection levels (basic, intermediate, maximum). New patent-pending “Enhanced Tamper Protection” technology increases security
Index / Search	Full text indexing and search (both data and metadata)*





## Today's Agenda

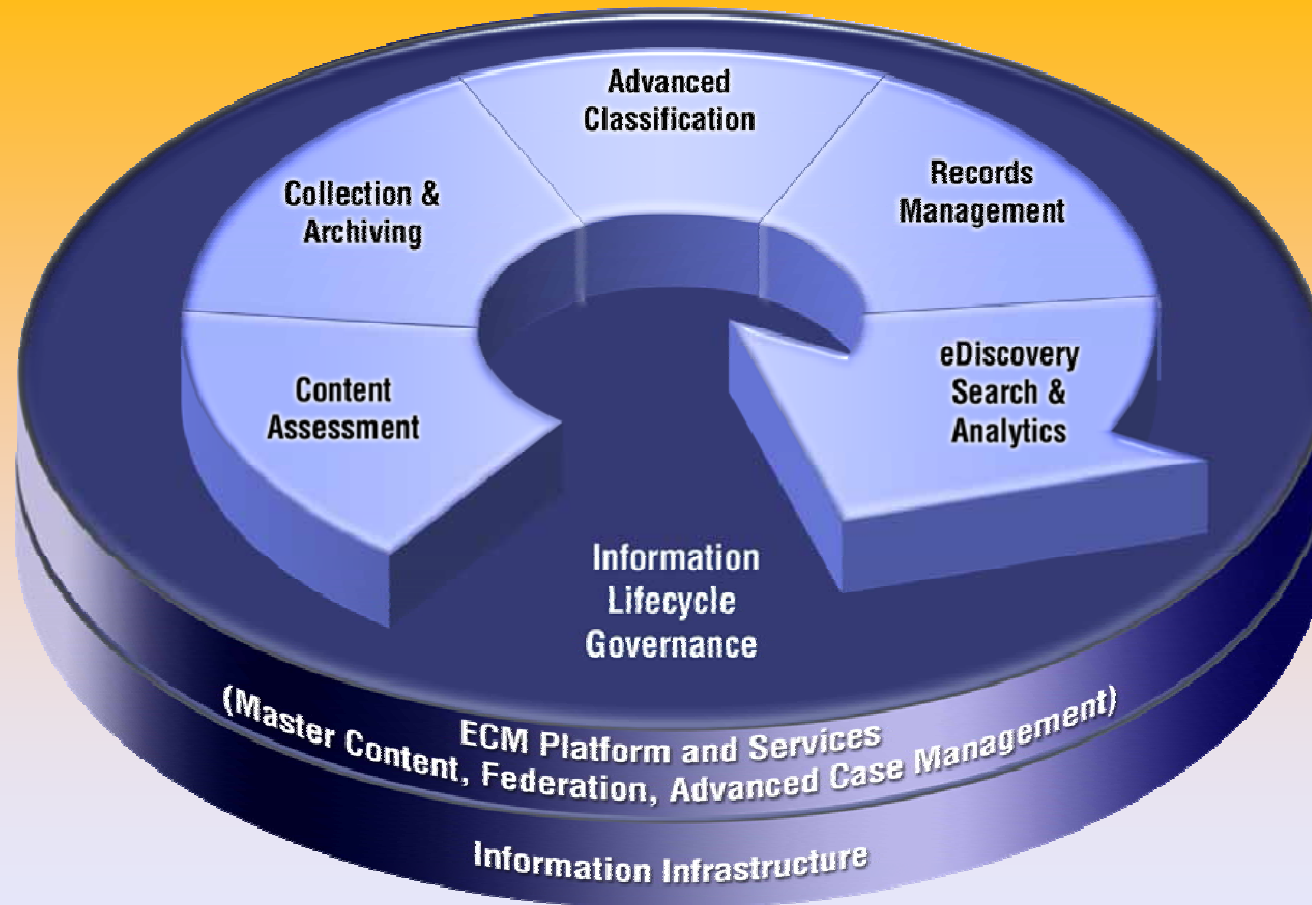
- The Imperative to Build a Smarter Archive Strategy
  - Information Explosion
  - Information and Infrastructure Chaos
  - Archiving is No Longer an Option
- IBM Smart Archive Strategy
- Introducing IBM Information Archive
- Existing and New Solutions Being Announced
- Why IBM





# IBM Information Lifecycle Governance (ILG) Model

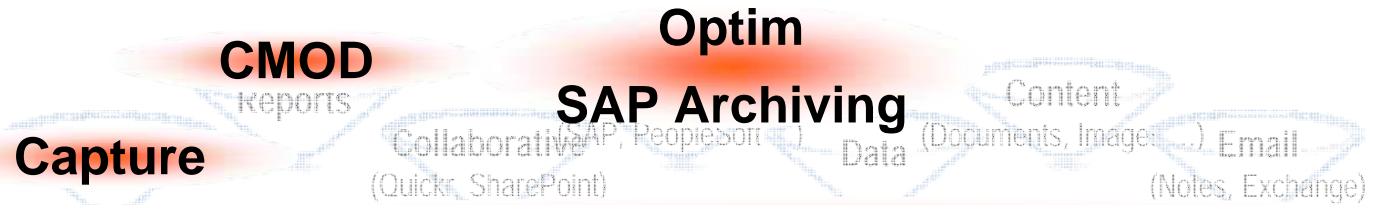
Information Governance Throughout the Information Lifespan





# Key IBM Smart Archive Solutions

Content Assessment



## Content Collector and Classification Module

Value Added Services

- Optimisation Services

**GTS and GBS Services**

- Information Governance
- Optional ECM

Optimised and Unified Assessment, Collection and Classification  
 Flexible and Secure Infrastructure with  
 Unified ReApplication Protection

**ECM**  
• Historian

**Information Archive**

**Information Archive Cloud Services (coming soon)**

**Tivoli**

**Enterprise Records and eDiscovery Analytics**

**IBM Systems & Storage**



# New Content Assessment Capability

**\* New!**

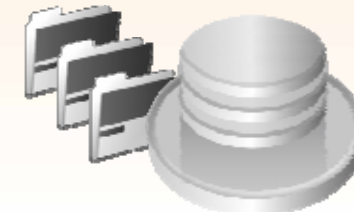
Shipping now!  
IBM Content Analytics for Assessment



*Leverage Content Analytics to assess and decide what information to manage, archive, trust and leverage*

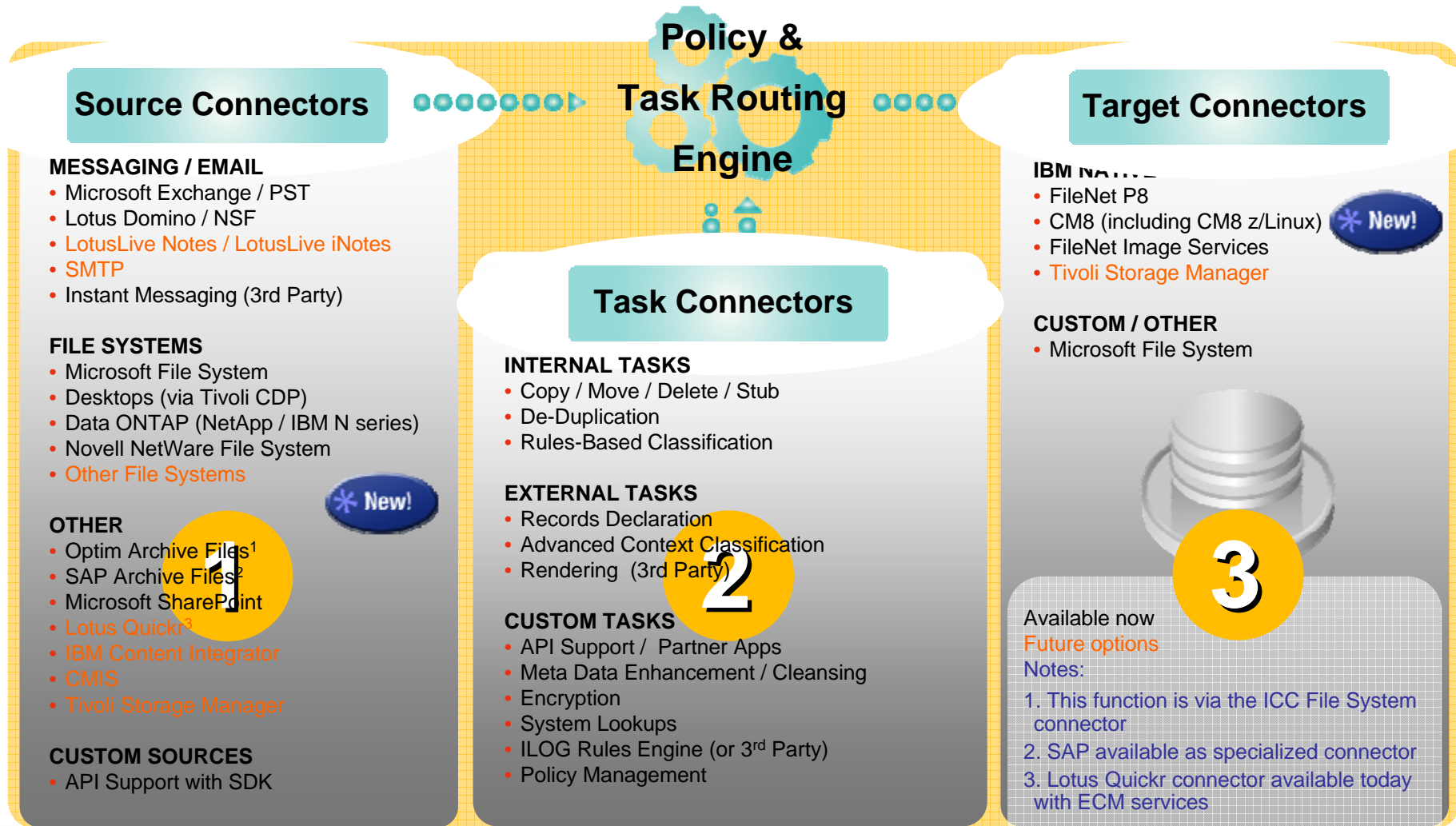
*Decommission unnecessary information (over-retained, irrelevant and duplicated)*

*Decommission unnecessary content-centric systems (file shares, SharePoint, PSTs, NSFs, team rooms, laptops) while retaining relevant information*



# Content Collector Overview

Modular and Extensible ... Powered by Unique Task Routing



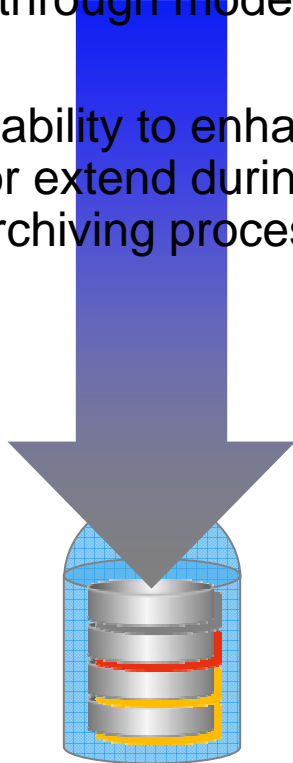




## Task Routing Supports More Than Traditional Straight-Through Archiving

Traditional archiving limited to fixed straight-through model

No ability to enhance or extend during archiving process



Content Collector Task Routing Architecture enables flexible routing or processing of internal, external and custom instructions (tasks)



### Task Connectors

### Task Routing

#### INTERNAL TASKS

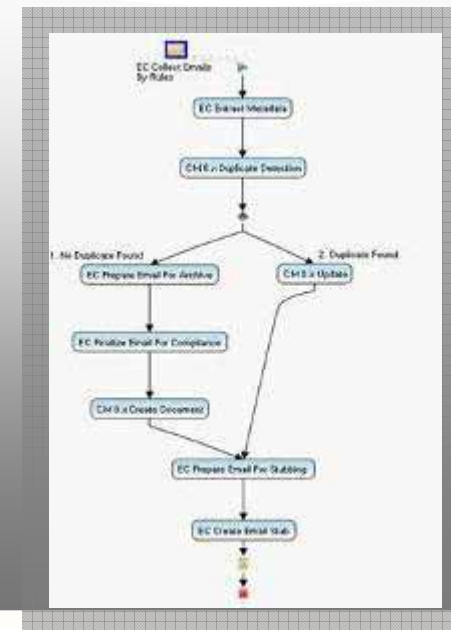
- Copy / Move / Delete / Stub
- De-Duplication
- Rules-Based Classification

#### EXTERNAL TASKS

- Records Declaration
- Advanced Context Classification
- Rendering (3rd Party)

#### CUSTOM TASKS

- API Support / Partner Apps
- Meta Data Enhancement / Cleansing
- Encryption
- System Lookups
- ILOG Rules Engine (or 3<sup>rd</sup> Party)
- Policy Management





# Content Assessment and Content Collection

## How it Works

**\* New!**

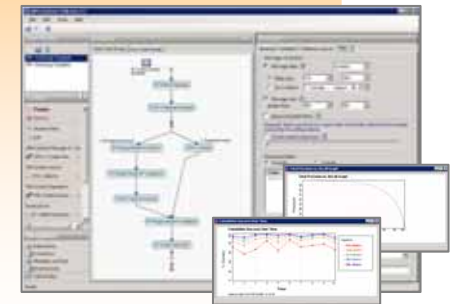
### Content Analysis and Assessment

- Configure for “in place” exploration and analysis of desired content sources
- Interactively search, mine and explore information to understand relationships and value to business
- Make decisions, build classification models and collection policies for initial cleanup and ongoing management



### Continuous Collection and Policy Management

- Setup and manage policies / rules for **Sources, Tasks** and **Targets** including de-duplication, records declaration, classification and ongoing monitoring
- Configure and customize **Task Routing** including meta data enhancement, 3<sup>rd</sup> party applications, advanced context classification and more



- Instant Messaging (3rd Party)
- FILE SYSTEMS**
  - Microsoft File System
  - Desktops (via Tivoli CDP)
  - Data ONTAP (NetApp / IBM N series)
  - Novell NetWare File System
  - Other File Systems
- OTHER**
  - Optim Archive Files<sup>1</sup>
  - SAP Archive Files<sup>2</sup>
  - Microsoft SharePoint
  - Lotus QuickF
  - IBM Content Integrator
  - CMIS
  - Tivoli Storage Manager
- CUSTOM SOURCES**
  - API Support with SDK

#### Task Connectors

- INTERNAL TASKS**
  - Copy / Move / Delete / Stub
  - De-Duplication
  - Rules-Based Classification
- EXTERNAL TASKS**
  - Records Declaration
  - Advanced Context Classification
  - Rendering (3rd Party)
- CUSTOM TASKS**
  - API Support / Partner Apps
  - Meta Data Enhancement / Cleansing
  - Encryption
  - System Lookups
  - ILOG Rules Engine (w/ 3<sup>rd</sup> Party)
  - Policy Management

#### CUSTOM / OTHER

- Microsoft File System





# Content Collection and Archiving Solutions

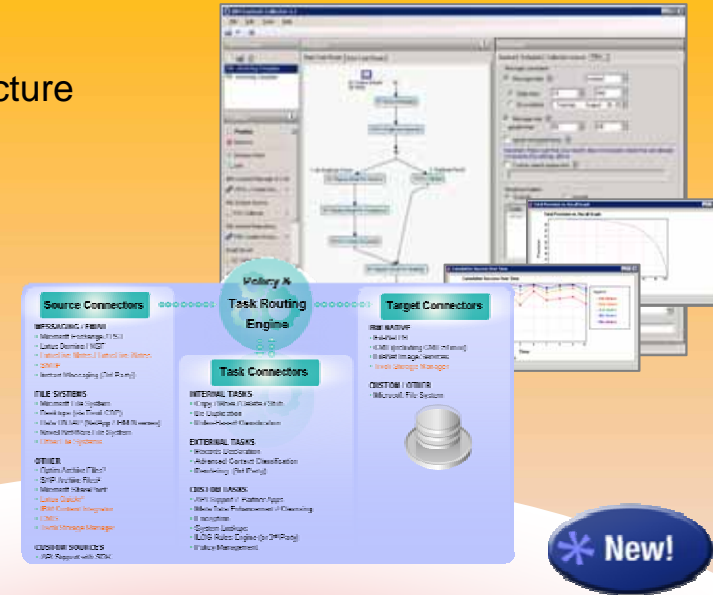
A family of Content Collection and Archiving offerings and partner solutions based on a modular, extensible architecture that enables organizations to gain control of information growth to better manage, trust and leverage information

- Reduce storage costs
- Improve production system and backup performance
- Reduce litigation costs and risks

**IBM Content Collector for Email**

**IBM Content Collector for File Systems**

**IBM Content Collector for Microsoft SharePoint**



## More than email

Assess, monitor, identify, and **collect** virtually all content types from all locations including “content in the wild” and existing silo systems

## More than archiving

**Enhance** by tasking, filtering, transforming, extracting meta data, customizing and more, including multiple classification options

## More than an isolated solution

**Manage** content as part of ECM platform (not a silo) to activate content, establish trust and unlock value

**Integrated with IBM Optim Data Growth Solution for Unified Data and Content Archiving**

**Specialty Connectors for SAP Archiving and Document Enabling**

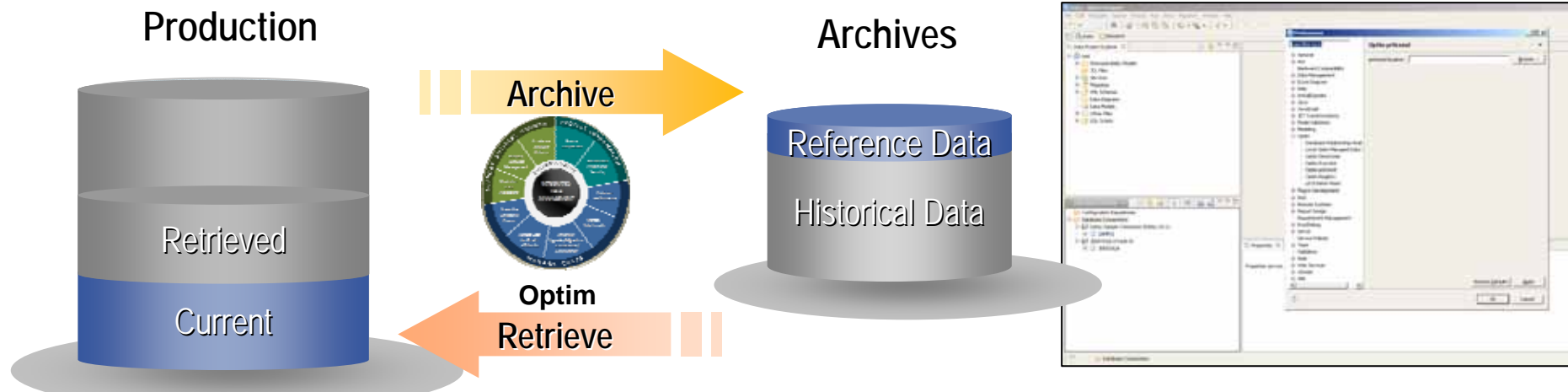
**IBM Information Archive Support**

**Content Assessment Analytics to Accelerate and Optimise Content Collection Decisions**



# Optim Data Growth Solution

Managing data growth and supporting application consolidation strategies



## Manage your enterprise application data

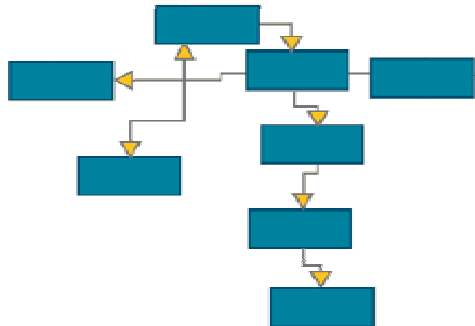
- Archive inactive or infrequently accessed application data according to business policies
- Maintain optimal application performance by controlling ongoing database growth
- Scale archiving capabilities across applications, databases, operating systems and platforms

## Safely retire legacy & redundant applications

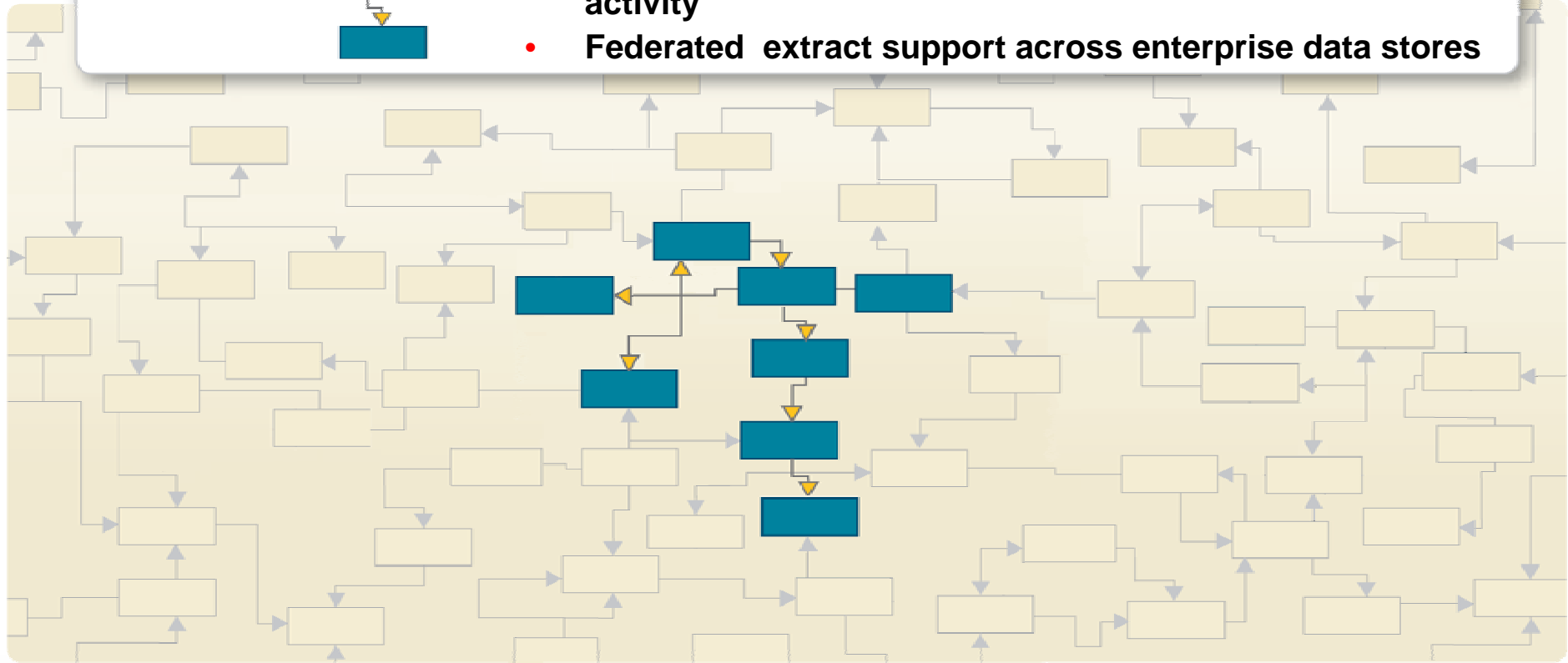
- Archive historical application data when retiring legacy applications or consolidating multiple applications to a single instance
- Retain historical application data in a format that can be accessed independently of the retired/decommissioned application
- Reduce IT infrastructure costs and complexity while reclaiming hardware assets



# Archiving a Complete Business Object



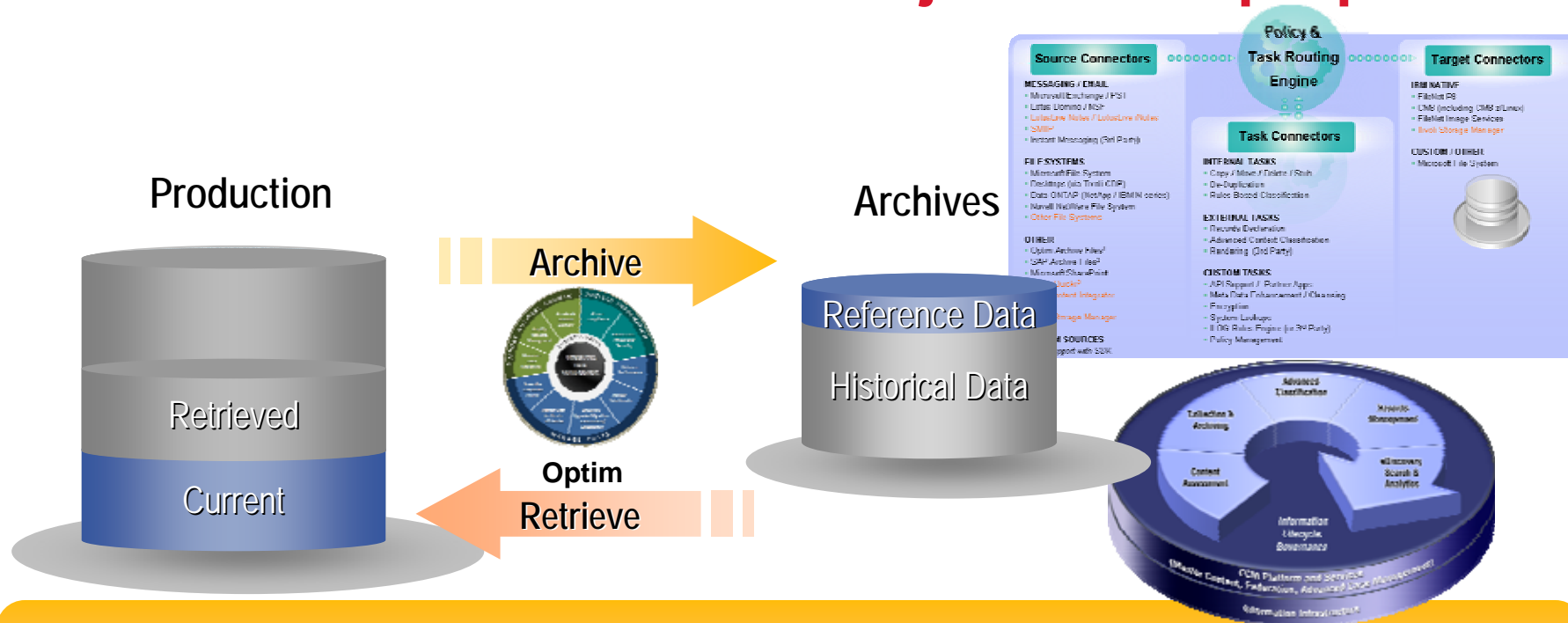
- **Represents application data record – payment, invoice, customer**
  - Referentially-intact subset of data across related tables and applications; includes metadata
- **Provides “historical reference snapshot” of business activity**
- **Federated extract support across enterprise data stores**







# Smart Archive: OPTIM and ECM joint value proposition



## Optim Data Growth Solution

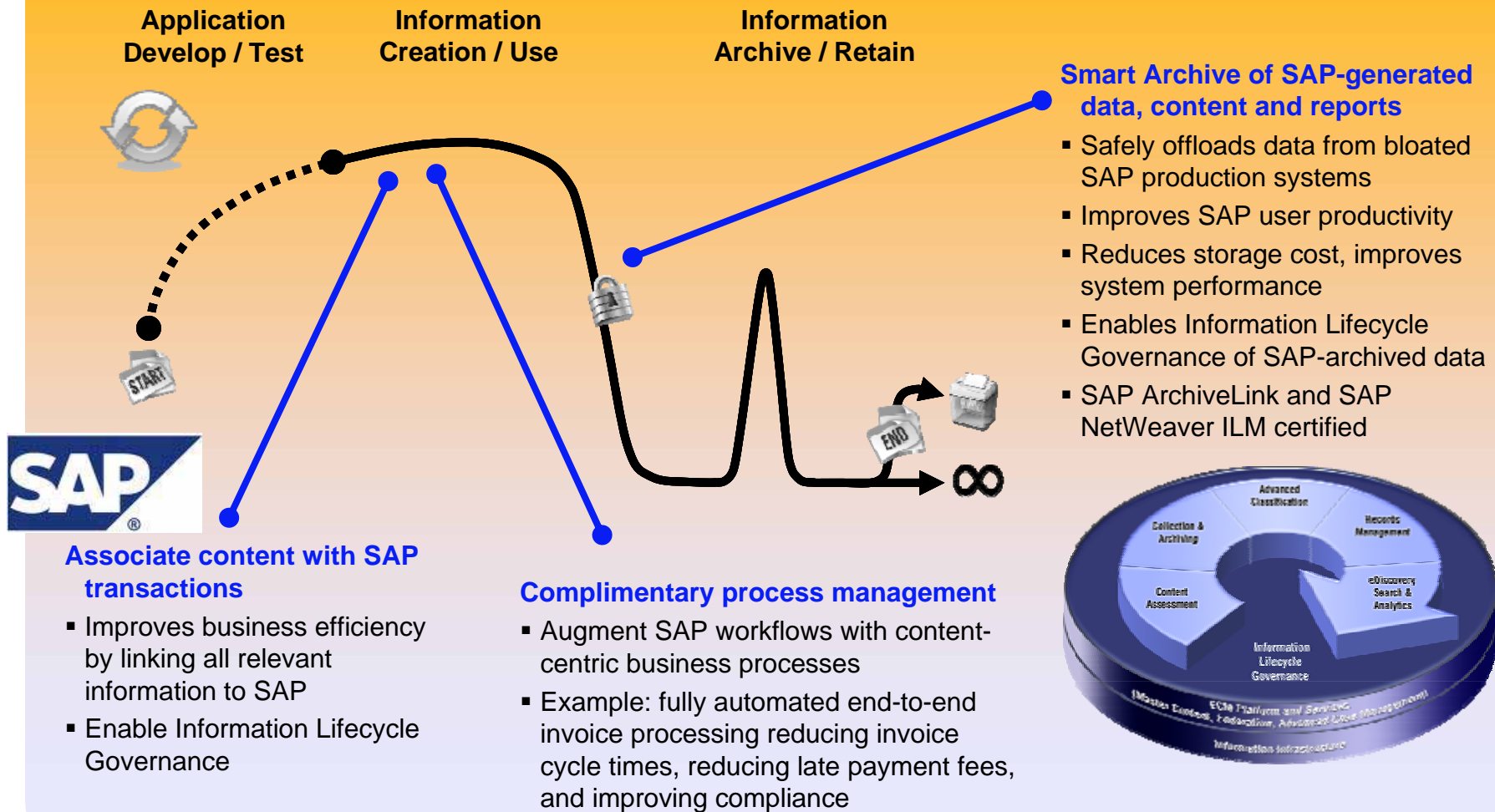
- Complete Business Object provides historical reference snapshot of business activity
- Immutable file format helps enable data retention compliance

## Content Collector and Information Lifecycle Governance

- Provides unstructured information archiving from various data sources, leveraging Content Collector and enabling Information Lifecycle Governance (including Records Management and eDiscovery) for the complete lifecycle of data
- Reduce point solution complexity and costs by providing data and content archiving solutions from a single vendor
- Multiple options exist for ECM and Optim to be used together



# Content Collection, Archiving and Compliance Solutions for SAP





# IBM Classification Module

Leveraging the Full Content Context for High Accuracy Advanced Classification

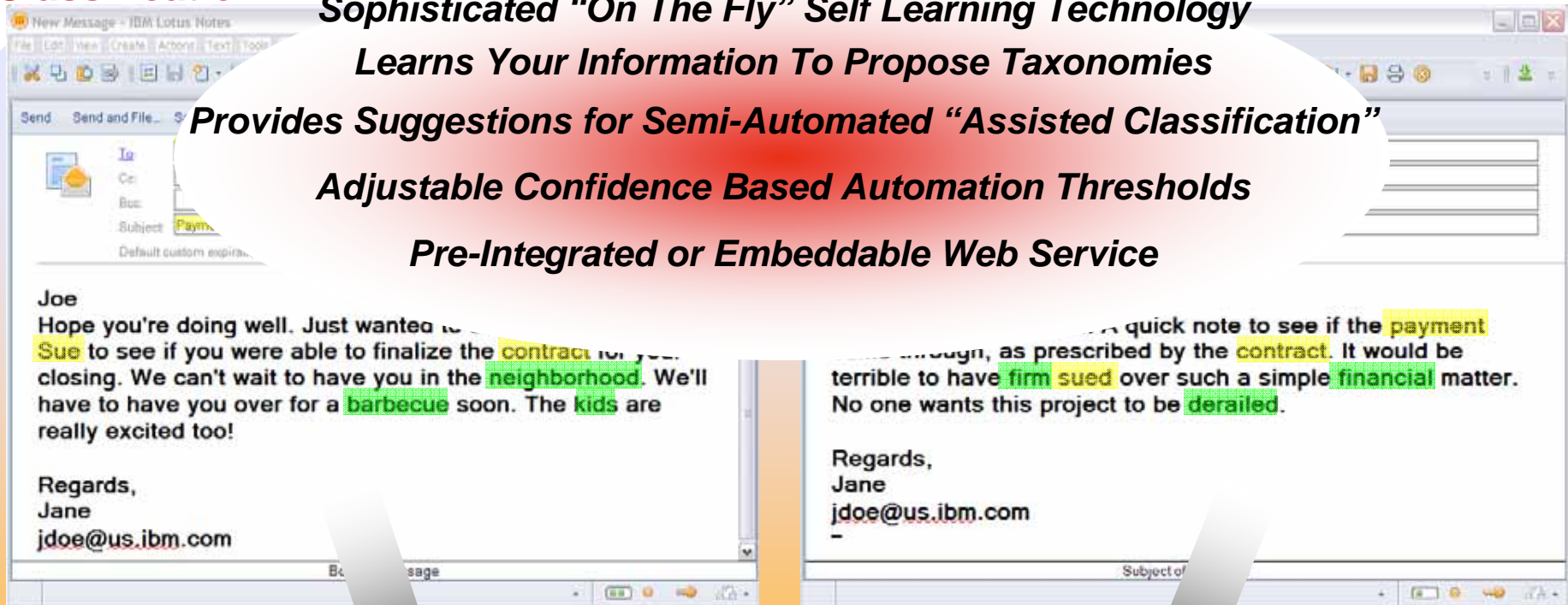
*Sophisticated “On The Fly” Self Learning Technology*

*Learns Your Information To Propose Taxonomies*

*Provides Suggestions for Semi-Automated “Assisted Classification”*

*Adjustable Confidence Based Automation Thresholds*

*Pre-Integrated or Embeddable Web Service*



*Rules based classification technologies alone are not accurate enough for most applications (without adding content context)*



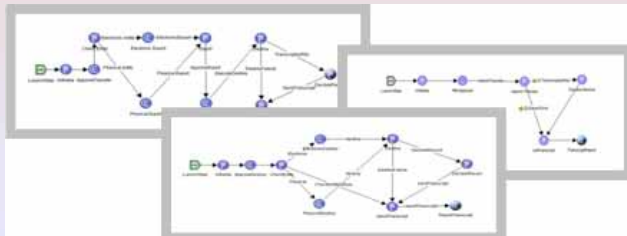


# IBM Enterprise Records

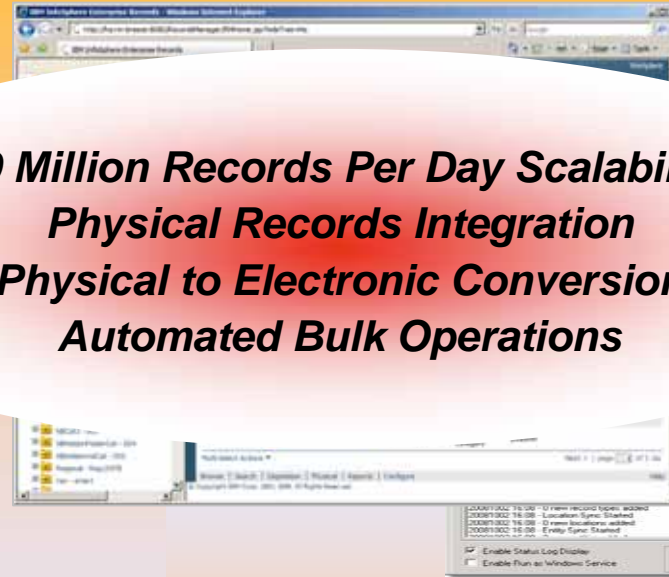
## Enterprise Electronic and Physical Records Powered by Integrated Process Management

*Manage all records regardless of type, media or storage location throughout lifespan that ensures authenticity, reliability, integrity and usability to proactively improve defensibility, lower risks and costs*

- Advanced information design, file plan, classification and meta data management including advanced context classification
- Integrated Records Federation Services for repositories
- Complex event and records process management including intelligent retention, dynamic legal holds and audited disposition management
- Physical records support with real-time audited records process and location tracking
- DoD 5015.02-STD Certified
- Best practice pre-integrated records process templates



**20 Million Records Per Day Scalability**  
**Physical Records Integration**  
**Physical to Electronic Conversion**  
**Automated Bulk Operations**



*Extend via partner solutions for integrated file room and offsite physical records storage management*

\* Same product formerly known as IBM FileNet Records Manager or IBM InfoSphere Enterprise Records

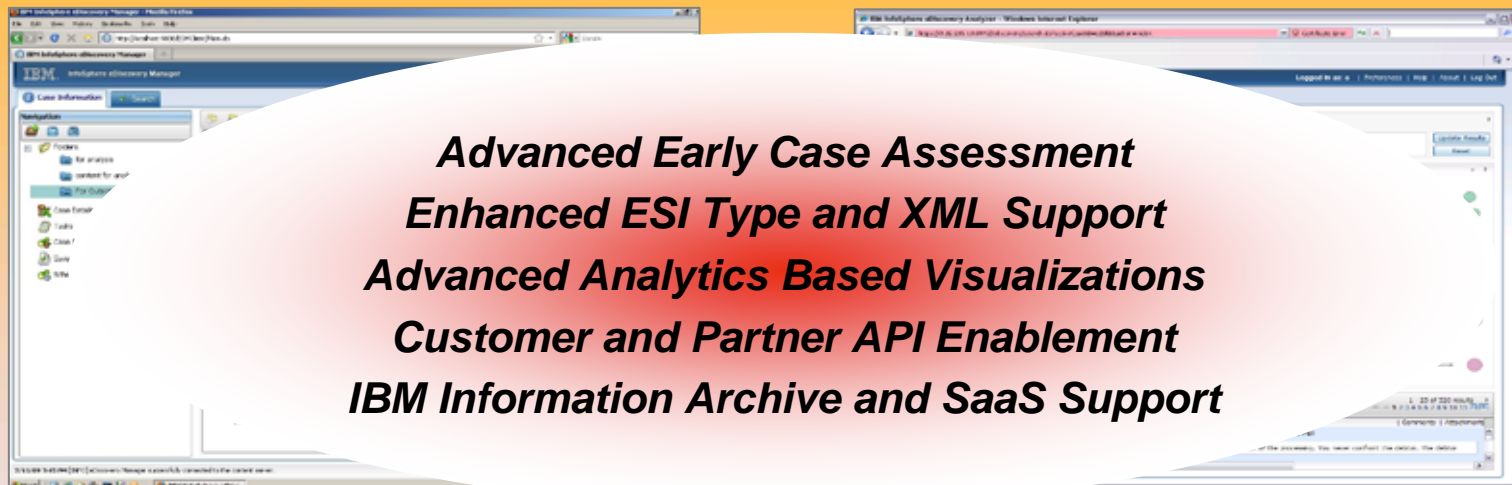




# IBM eDiscovery Manager & Analyzer

## Efficient Litigation Response Enabled by Proactive Information Management

*Increase agility, improve defensibility and lower cost of eDiscovery response with targeted tools to collect, hold, manage, assess and intelligently cull collected electronic information regardless of originating source*



**Advanced Early Case Assessment**  
**Enhanced ESI Type and XML Support**  
**Advanced Analytics Based Visualizations**  
**Customer and Partner API Enablement**  
**IBM Information Archive and SaaS Support**

### IBM eDiscovery Manager

- Tool for authorized IT users to help respond to discovery requests from legal
- Create and manage cases; search, assign, hold, preview, and export collected content
- Built on and integrated with ECM platform with full auditability for chain-of-custody

### IBM eDiscovery Analyzer

- Early case assessment and smart culling for legal professionals and litigation support specialists
- Smart refinement of case collections to help dramatically reduce eDiscovery costs
- Advanced conceptual search and content analytics for rapid case insight





# IBM Content Collector Discovery Analytics

A bundle that helps you to

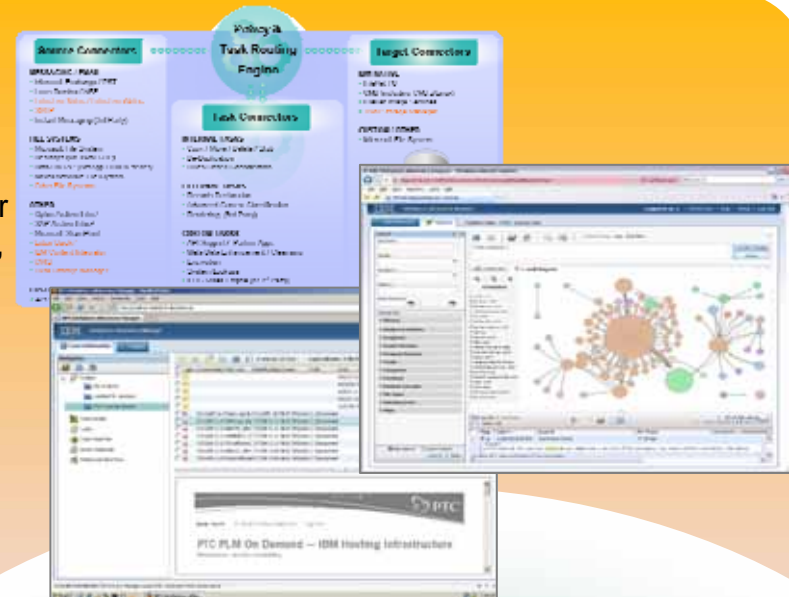
- Intelligently collect and archive various types of content from multiple locations
- Search, cull, hold, and export that content for legal discovery or corporate audits and investigations; all through an easy-to-use, feature rich, Web-based user interface.

Available in a starter pack for departmental or small to medium projects between 250-1400 users.

Consists of:

- IBM Content Collector for Email
- IBM Content Collector for File Systems
- IBM eDiscovery Manager
- IBM eDiscovery Analyzer

Can run on and leverage the power of IBM In-Storage Archive which is a universal, scalable, and secure storage repository for structured and unstructured information



**Starter Pack helps budget-conscious organizations kick off collection and eDiscovery projects for up to 1400 users**

**Start today, expand tomorrow**



## Today's Agenda

- The Imperative to Build a Smarter Archive Strategy
  - Information Explosion
  - Information and Infrastructure Chaos
  - Archiving is No Longer an Option
- IBM Smart Archive Strategy
- Introducing IBM Information Archive
- Existing and New Solutions Being Announced
- Why IBM





## Reminder: **Being Smart Doesn't Mean Being Complicated**

### **Optimised and Unified Ingest**

**Data  
Discovery**

**Content  
Assessment**

**Data & Content  
Collection and  
Classification**

**On-Site  
Configurable**

**Preconfigured  
Appliance**

**Preconfigured  
as-a-Service**

**Unified Retention and Repository Management**

**Flexible and Secure Infrastructure**

**Integrated Compliance, Analytics and eDiscovery ...  
Value Added Services**



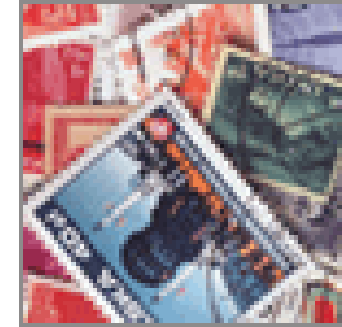
Learn More!

## IBM Smart Archive

–<http://www.ibm.com/smartarchive>

–Microsite :

[www.ibm.com/software/ecm/smartarchive](http://www.ibm.com/software/ecm/smartarchive)





## IBM Smart Archive Strategy

IBM now delivers the industry's most comprehensive set of specific solutions in a unified, integrated and coherent information aware strategy that maximizes customer value

*Wikibon ... "IBM with their Smart Archive strategy has demonstrated sorely needed leadership. They've made a concentrated effort to "harmonize" across hardware, software, services and best practices to help customers achieve true information governance."*

*Gary MacFadden, Principal Research Contributor for Wikibon*

*Forrester ... "..the vision that IBM outlines in this announcement is strategically compelling. "*

*Brian W. Hill, IBM Gets Smart With Its Archiving Strategy, [http://blogs.forrester.com/brian\\_hill/09-10-27-ibm\\_gets\\_smart\\_its\\_archiving\\_strategy](http://blogs.forrester.com/brian_hill/09-10-27-ibm_gets_smart_its_archiving_strategy), 27 Oct 2009*





Questions?

THANK  
YOU



# IBM Business Value Assessment Process

## Methodology

- ✓ Focuses on hard-dollar savings
- ✓ Prioritizes benefit areas

## Scope

- ✓ Environments Analyzed: SharePoint, Email, File Shares, Mainframe Apps, SAP, Siebel EU, Hyperion, Manugistics or more

## Process

- ✓ Employee, stakeholder interviews by IBM consultants
- ✓ Analyzes business partner reports
- ✓ Validates assumptions and results with Stakeholders
- ✓ Uses IBM tools for cost savings, modeling, analysis and software configuration

Team Member	Area	Application
	Enterprise Archiving Solution	Global Archiving Project
	Semi-structured	
	Semi-structured	Email
	Application	Retired & Production (non-SA
	Application	Mainframe / AS400
	Application	Retired & Production (non-SA
	Finance Manager	Business Case Development
	Finance	Business Case Development
	Structured, Semi-Structured	
	Unstructured	IT Capacity Ping Mgr
	Structured	SAP EU
	Oracle/Structured - Hyperion	Finance - Hyperion
	Oracle/Structured - Hyperion	Hyperion
	Oracle/Structured - Hyperion	Hyperion
	Oracle/Structured - Hyperion	Hyperion
	Oracle/Structured - Hyperion	Hyperion
	Structured - SAP App Owner	SAP - Catalyst
	Structured - SAP App Owner	SAP - Catalyst
	Security EU	Security EU
	Security EU	Security EU
	Structured	EU Star
	Security EU	Security Manager
	Apps	Manugistics
	Apps	Siebel
	Apps	Siebel - Europe

Sample Executive Dashboard

