



Six reasons to move from Oracle to IBM

Learn how companies around the world are boosting performance, cutting costs and managing growth

Contents



Performance

Specialist engineering and manufacturing company
Maschinenfabrik Reinhausen

1

2

Cost savings

Agriculture and chemical holding group
Agrofert

Usability

Consumer products company
Newell Rubbermaid

3

4

Scalability

Automotive bearings and components supplier
Schaeffler KG

Flexibility

Imaging technology provider
Epson America

5

6

Reliability

Clothing and accessories e-commerce retailer
Faith Industry

Contents

Performance

Cost savings

Usability

Scalability

Flexibility

Reliability

Resources

Introduction



What can IBM do for you?

As the world becomes increasingly interconnected and intelligent, many organizations are looking to become smarter about their use of IT. They need to seamlessly deal with growing volumes of data traveling at ever-greater velocity, get actionable business insight from their information faster and gain greater data center efficiencies from their operations.

Those needs create a daunting array of workload challenges and place tremendous demands on IT systems. That's why IBM has integrated and optimized its software and hardware to meet the new workload requirements of today's global business environment. And that's why moving to IBM is one of the smartest moves you can make.

Introduction



Six case studies—one for each reason to switch

Here are six companies like yours that tackled important challenges by moving from Oracle to IBM:

1. Faster response time improved total business productivity for **Maschinenfabrik Reinhausen** compared to a previous Oracle database.
2. The IT group at **Agrofert** delivered impressive savings by reducing administration, support and licensing costs.
3. Replacing its legacy databases enabled **Newell Rubbermaid** to reduce average storage volumes by 58 percent and cut total storage costs by US\$300,000 during the first year.
4. By deploying its existing infrastructure more effectively, **Schaeffler KG** was able to keep up with rapid growth and avoid the need to expand capacity.
5. Rapid analysis and reporting of business data helped **Epson America** make decisions faster and plan for the future more effectively.
6. Efficient portability allowed **Faith Industry** to reuse applications that had been written for a previous Oracle database—without costly rewriting and testing.

Click on a company name for a quick synopsis. Download a PDF for the full story of any case that interests you.



“Moving from Oracle to IBM DB2 has made a very significant contribution to our ongoing performance improvement strategy—without requiring expensive hardware upgrades or complex database optimization work.”

— Franz Moser
Chief Information Officer
Maschinenfabrik Reinhausen

Maschinenfabrik Reinhausen

With the growth of its international business, Maschinenfabrik Reinhausen was introducing more data, new applications and additional users into its SAP ERP environment. Support for additional languages also required the introduction of Unicode, which increased data volumes further. As a result, Oracle database performance was suffering, which impacted user productivity and business efficiency. Working with IBM Global Technology Services, the company migrated data from Oracle to IBM® DB2®, utilizing the IBM DB2 Deep Compression feature to reduce data volumes and boost performance for the company’s SAP ERP and SAP NetWeaver Business Warehouse environments.

Results

- IBM DB2 Deep Compression has reduced total database sizes by around 40 percent, and delivered significant performance improvements
- Query response times have been reduced by 25 percent, batch processes by 44 percent and backups by 71 percent
- Faster database response has improved total business productivity, with reports available more quickly and higher transaction throughput



Download the PDF

Of course, performance is only one of the potential benefits of moving to IBM. Read on for more.

Cost savings

2



“We selected IBM DB2 as it offered the best combination of low license fees for SAP applications and low operational costs. With IBM DB2, we see savings in disk array capacity of an average of 20 percent, and system response speeds are about 15 percent faster.”

— **Luboš Pajer**
IT Manager
Agrofert

Agrofert

Agriculture, foods and chemicals group Agrofert found that rapid growth had resulted in more than 160 different systems operating in subsidiary companies. It was difficult to provide unified reporting, and support and license costs were rising. Adding yet more infrastructure with each new acquisition was not a scalable strategy. Agrofert implemented SAP ERP applications as a shared service for some of its subsidiaries, aiming to make these available subsequently throughout the enterprise, hosted at two locations on IBM Power Systems™ servers. The company migrated from a mixed database environment, including Oracle and Microsoft® SQL Server, to IBM DB2 as its standard database and deployed centralized storage systems for critical business data.

Results

- Eliminating local systems greatly reduced administration, support and license costs
- Consolidated storage helps to reduce costs, and IBM DB2 Deep Compression will reduce total storage requirements
- Total cost reductions are estimated at 20 percent



Download the PDF

Moving to IBM can also help you save money through reduced administration, as the next company can attest.



“By using DB2 Deep Compression, Newell Rubbermaid has achieved average database compression ratios of 58 percent... Additionally, database administration workload has been reduced by around 25 percent, with the integrated DBA Cockpit making a significant contribution to our cost-saving objectives.”

— **Creighton Kelly**
Director of IT for the SAP Infrastructure
Newell Rubbermaid

Newell Rubbermaid

With several independent databases supporting SAP ERP and other business solutions, Newell Rubbermaid found it difficult to report across the different operating units. Opportunities to rationalize procurement, supply chains and production were being missed, and without global sales order processing, it was hard to be certain of business forecasts. Supporting the concept of the integrated enterprise, Newell Rubbermaid replaced its legacy databases, Oracle and Adabas, with IBM DB2 as its global standard for all SAP applications. To ensure performance, reliability and availability, Newell Rubbermaid deployed the new solution on IBM Power Systems servers.

Results

- The IBM Systems solution for SAP NetWeaver Business Warehouse Accelerator enables Newell Rubbermaid to process business intelligence queries on average 30 to 50 times faster, and in some cases, as much as twice as fast as before, even without specific optimization of aggregated data
- IBM DB2 Deep Compression has reduced average storage volumes by 58 percent, cutting total storage costs by US\$300,000 in year one
- IBM DB2 integrated data cockpit has reduced administrative workload by 25 percent, so just one database administrator can now manage the entire landscape



Download the PDF

Consolidation has its benefits, as this case shows. But what happens when data growth explodes?



“IBM DB2 has achieved excellent performance and capacity savings for the SAP NetWeaver BI database, contributing directly to the effective use of business analysis within Schaeffler KG.”

— Harald Gießler
Chief Information Officer
Schaeffler KG

Schaeffler KG

Automotive bearings manufacturer Schaeffler KG found that increasing use of business analysis was driving rapid growth in data storage needs. As volumes grew, application performance tended to decline, frustrating the users in their search for information. Schaeffler KG migrated the databases for its SAP NetWeaver Business Intelligence (SAP NetWeaver BI) environment to IBM DB2.

Results

- The immediate impact was to reduce the SAP NetWeaver BI database volume by 43 percent, from 8 TB to 4.5 TB, and other databases also benefited from significant reductions
- With reduced total storage requirements, Schaeffler KG is able to deploy its existing infrastructure more effectively and avoid the need for capacity expansion
- The migration to IBM DB2 has improved system performance, which allows Schaeffler KG to exploit its existing infrastructure without upgrade



Download the PDF

Moving to IBM hardware is another way to maximize an SAP environment—just see the next success story.



“The IBM BladeCenter® architecture offers excellent performance for our SAP applications, and using it for the accelerator solution is a neat way to provide our business users with faster access to information.”

— **Russell Link**
Manager of Technical Services
Epson America

Epson America

Epson America wanted to move to support its ultimate objective of creating a single business platform for all subsidiaries in the Americas. This would enable faster financial reporting and improve the data quality for better business planning and decision making. With legacy business systems and hardware infrastructure reaching end-of-life—and Oracle Financials applications requiring an expensive upgrade—Epson America was unable to make the desired changes. Epson America migrated from Oracle Financials and other applications to a single SAP ERP Financials solution, running under IBM AIX® on an IBM Power® 550 server.

Results

- Rapid analysis and reporting of business data help the company’s end users take decisions faster and plan for the future more effectively
- IBM Power 550 platform delivers excellent performance, with IBM PowerVM™ virtualization enhancing flexibility and optimizing utilization of resources
- SAP applications provide a low-risk, integrated and highly expandable solution that will ultimately form the backbone of Epson’s operations in the Americas



Download the PDF

IBM delivers big advantages not only with SAP but also with other applications, as the next company discovered.



“Reliability, decreased execution times and optimization of space are the three successes that have been indicated by IBM DB2 9.7 and OneCube Brick.”

— Arianna Perna
Owner
Faith Industry

Faith Industry

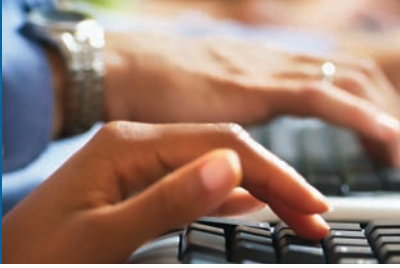
With its launch of www.youfai.it, Faith Industry has created an e-commerce site for important brand names of clothing and accessories and for trademark names such as Rero Design, Johnny Faith and Alta Sartoria Molisana. In building the new e-commerce website, the company turned to IBM and IBM Business Partner OneCube, after an initial Oracle-based pilot project, to deliver a platform that would use an integrated relational database with the company’s existing legacy systems. As part of the project, one of the first significant evolutions has been the company’s migration from Oracle technology to IBM technology.

Results

- Delivered reliable and manageable platform to support expansion of e-commerce site
- Up to 75 percent reduction of space needed to archive data from previous Oracle database installation
- Provided an average code portability of 95 percent



[Download the PDF](#)



Become a smart database organization

IBM is ready to help you expand to support business growth, optimize resources, improve business agility and get more value from your software investment. It has already helped companies around the world reach their goals. Let's tackle yours next.

IBM hardware and software delivers the capabilities you need to reduce complexity and free up time to put more focus on innovation. They enable you to lower costs the smart way, without adding more complexity. And they enable insights and decision making fast enough for a business that's changing in real time—a business like yours.

Download the PDFs of these case studies and learn more about moving from Oracle to IBM:

- [Maschinenfabrik Reinhausen](#)
- [Agrofert](#)
- [Newell Rubbermaid](#)
- [Schaeffler KG](#)
- [Epson America](#)
- [Faith Industry](#)

To learn more about IBM solutions, visit:

- ibm.com/smartersystems
- ibm.com/breakfree
- ibm.com/websphere
- ibm.com/systems
- ibm.com/db2



© Copyright IBM Corporation 2010

IBM Software Group
Route 100
Somers, NY 10589

Produced in the United States of America
October 2010
All Rights Reserved

IBM, the IBM logo, ibm.com and DB2 are trademarks or registered trademarks of International Business Machines Corporation in the United States, other countries or both. If these and other IBM trademarked terms are marked on their first occurrence in this information with a trademark symbol (® or ™), these symbols indicate U.S. registered or common law trademarks owned by IBM at the time this information was published. Such trademarks may also be registered or common law trademarks in other countries. A current list of IBM trademarks is available on the web at "Copyright and trademark information" at ibm.com/legal/copytrade.shtml

Microsoft, Windows and the Windows logo are trademarks of Microsoft Corporation in the United States, other countries or both.

Other company, product or service names may be trademarks or service marks of others.

NIM03004-USEN-00