



Business Agility in Action

IBM BPM 7.5 Overview

Maxime Cenatiempo – IBM BPM Technical Sales

18/10/2011

Agenda



- IBM BPM Introduction
- IBM BPM 7.5 – Highlights
- Demonstration – IBM BPM 7.5
- Q&A

IBM Business Process Management in 2011



Simplicity

Simplifies operations and **improves** entire experience

Easy enough to engage all process participants

Power

High-integrity orchestration, integration, and connectivity

Scales smoothly and easily from initial project to enterprise-wide program



Visibility

Centralizes **visibility and control**

Empowers knowledge workers with built-in **real time** analytics to optimize business processes

Governance

Unified BPM **asset repository**

Simplify life-cycle management of process applications **across 1000s of projects**

IBM Business Process Manager 7.5



Formerly known as WebSphere Integration Developer

- Now integrated with Process Center
- Publish, version, and deploy as part of a process application
- Incorporate into Process Center “playbacks” for business visibility

Process Designer

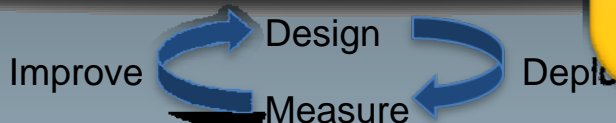
Integration Designer

Process Center

Governance of Entire BPM Life Cycle

Shared Assets Versioned Assets Server P...

BPM Repository



Process Server

BPMN

Rules

Monitoring

BPEL

ESB

Out-of-box Process Portal

Configurable Business Space

Optional Microsoft Add-ons

Inherited from Lombardi

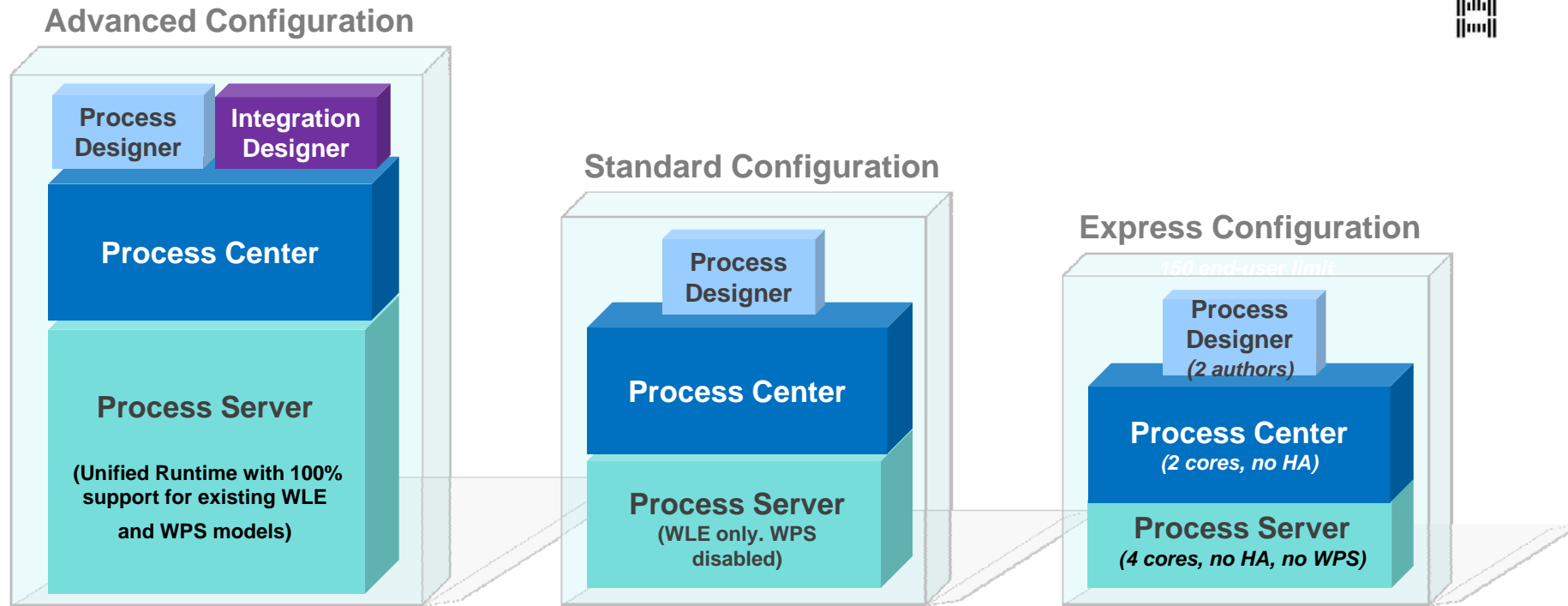
- BPMN Process Modeling & Execution
- Process Center
- Built-In Monitoring of BPMN processes
- Built-in reporting and scoreboards for process visibility
- Coaches for human task steps

Complete WebSphere Process Server capability in the Process Server runtime

- Execute BPEL processes
- Execute Mediation Flows
- Application deployment and administrative models fully supported without change

IBM BPM Configurations

Different configurations match typical entry points or stages in a company's BPM program



Complete set of advanced BPM capabilities

- Includes standard BPM capabilities,
- Extended support for high-volume process automation, with high quality-of-service
- Built-in SOA components for extensive enterprise-wide service integration, orchestration

Configured for typical BPM projects, programs

- For multi-project improvement programs, with high business involvement
- Focus on improved workflow, productivity
- Basic system integration support
- Rapid time-to-value

Configured for first BPM projects

- For small numbers of users – single server, no clustering
- Low entry price
- Easy to install, easy to use

Agenda



- IBM BPM Introduction
- IBM BPM 7.5 – Highlights
- Demonstration – IBM BPM 7.5
- Q&A

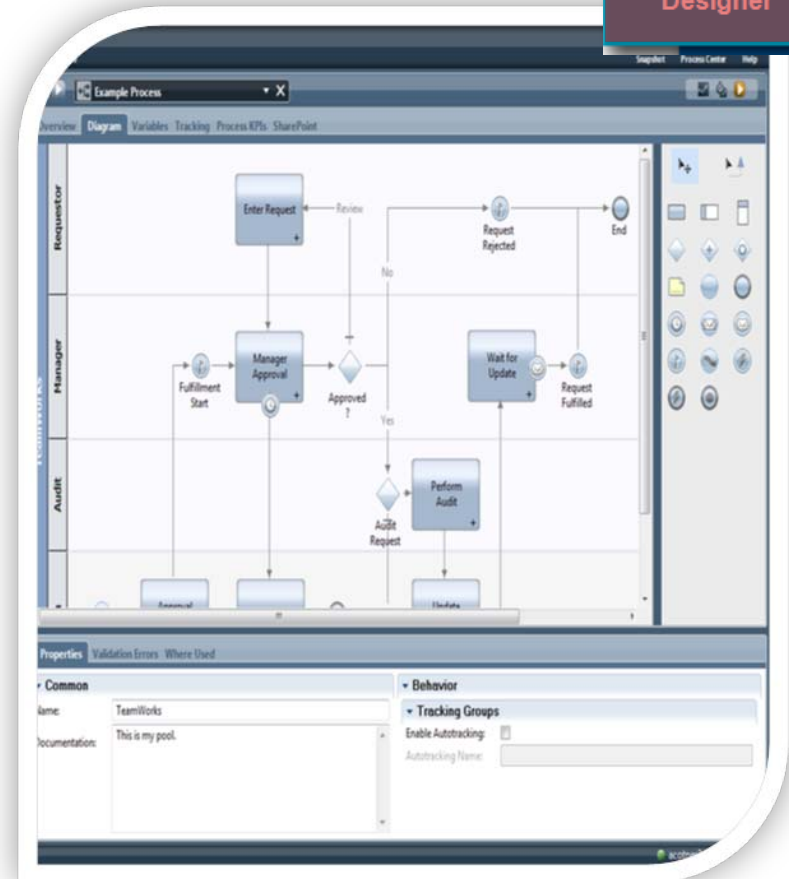
IBM BPM 7.5 – Highlights

Better Business & IT Collaboration



Process
Designer

- Simplified, graphical Process Designer
 - Makes it easier for every team member to collaborate on process design and analysis
- Built-in playback feature
 - Allows teams to instantly step through and review the current process design by actually executing it with a single click
 - Even if it is not yet complete - nothing to compile or install
 - Validate implementation faster
- Visualise version to version changes

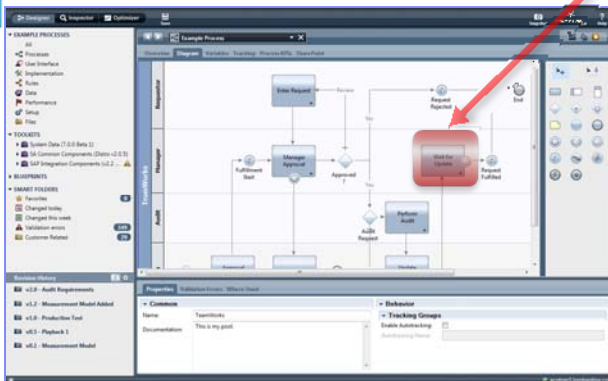


IBM BPM 7.5 – Highlights

Development Collaboration with Process Center

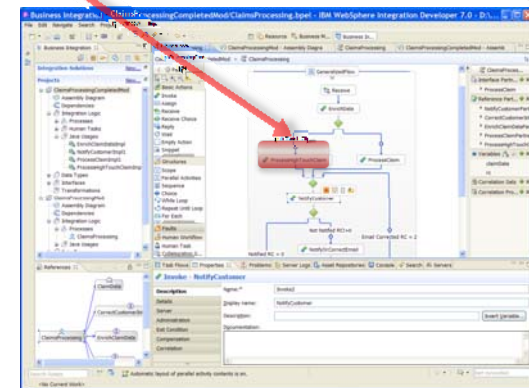


 **Business & IT Authors**



Business Author requires a back-end integration for an Expense Reporting process that he is building

IT Developers 



Integration Developer is building a straight-through Credit Check process that has a business exception path requiring human interaction

IBM BPM 7.5 – Highlights

Built-in Monitoring for Visibility



1

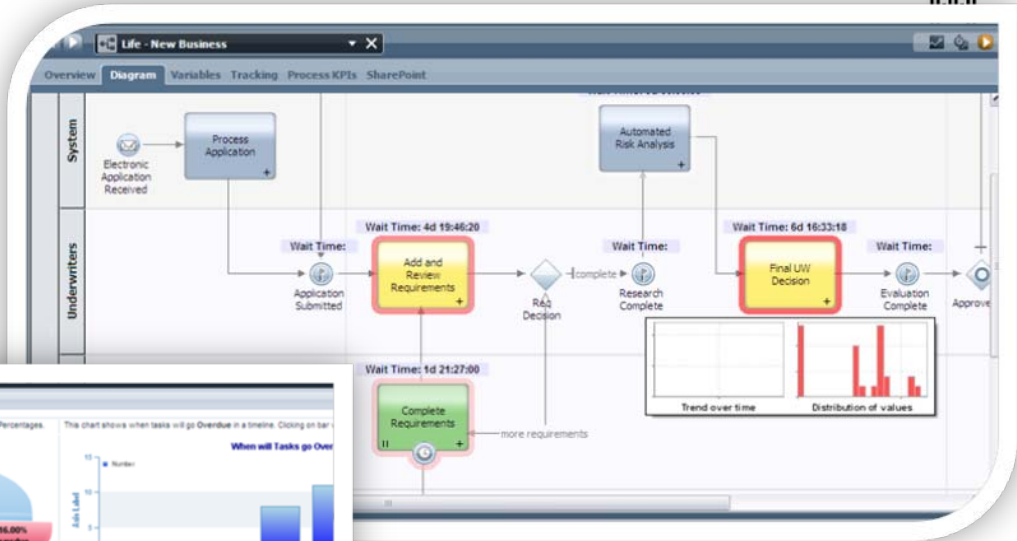


2

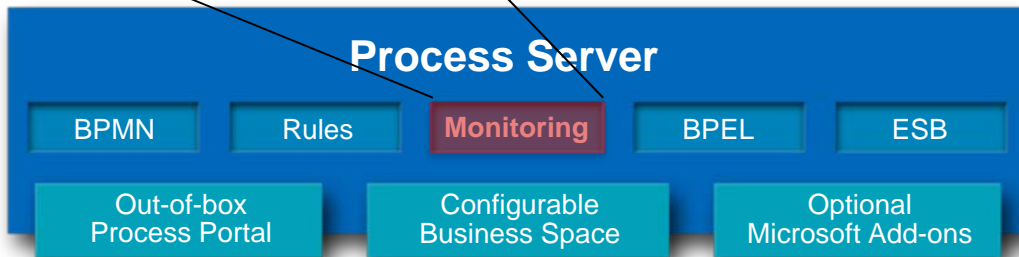
3



4



1. Single BPMN model drives monitoring as well as execution
2. Data analysis performed continuously on-the-fly
3. Real-time visibility to tasks, SLAs in jeopardy
4. Visualize “hot spots” on diagram and drill down for insights



IBM BPM 7.5 – Highlights

Advanced Integration Capabilities

- Integrated solution for **service mediation**
- Access to **existing WESB connectors**
- Broad support of **application environments and protocols**, standard XML and web services formats
- Enables **SOA** standard solution architectures
- Access to **enterprise class BPEL engine**

Process Server

BPMN

Rules

Monitoring

BPEL

ESB

Out-of-box
Process Portal

Configurable
Business Space

Optional
Microsoft Add-ons



Agenda



- IBM BPM Introduction
- IBM BPM 7.5 – Highlights
- Demonstration – IBM BPM 7.5
- Q&A

IBM BPM 7.5 – Demonstration

Top Down – Business Author Led Service Development

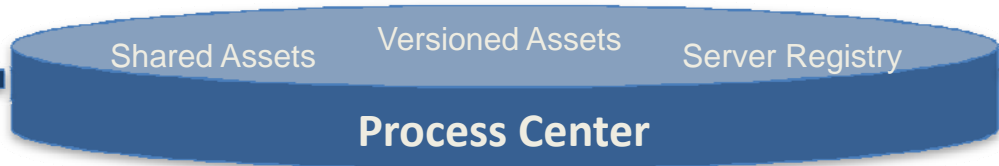


Business Process Owner

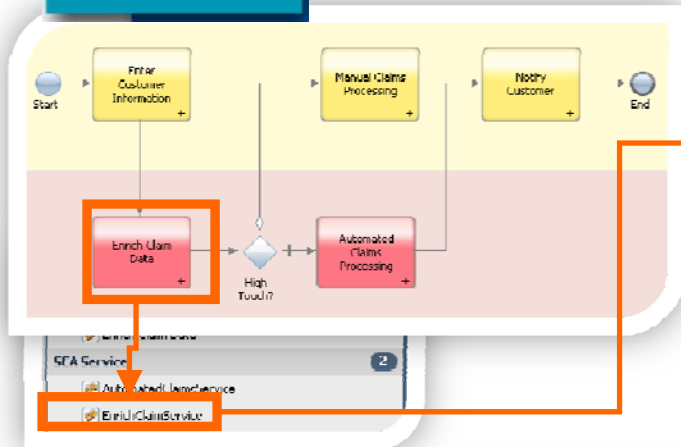
- *Authors a Process Application*
- *Defines Service Interfaces for Implementation by Integration Developer*

Integration Developer

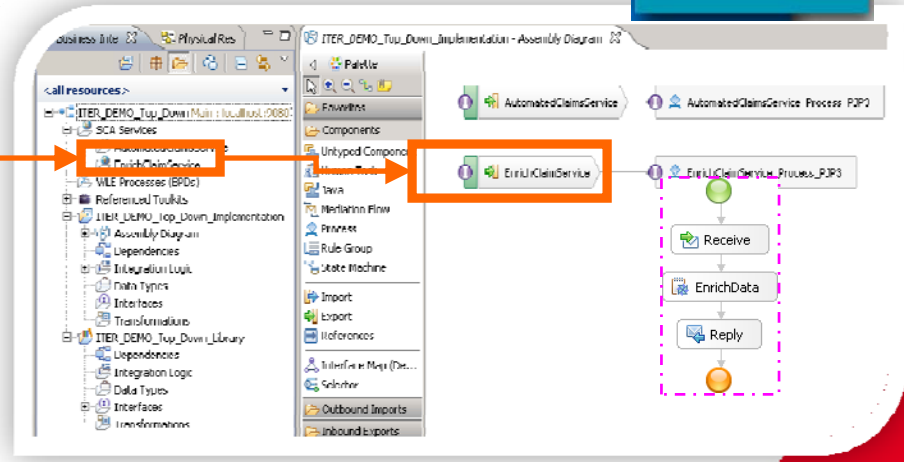
- *Imports the Process Application*
- *Generates Service Implementations*
- *Delivers Services to Repository*



Process Designer



Integration Designer



IBM BPM 7.5 – Demonstration

Bottom-Up – IT Led Service Development



Integration Developer

- Define Integration Services
- Make Services visible to Process Designer
- Delivers Services to the Repository



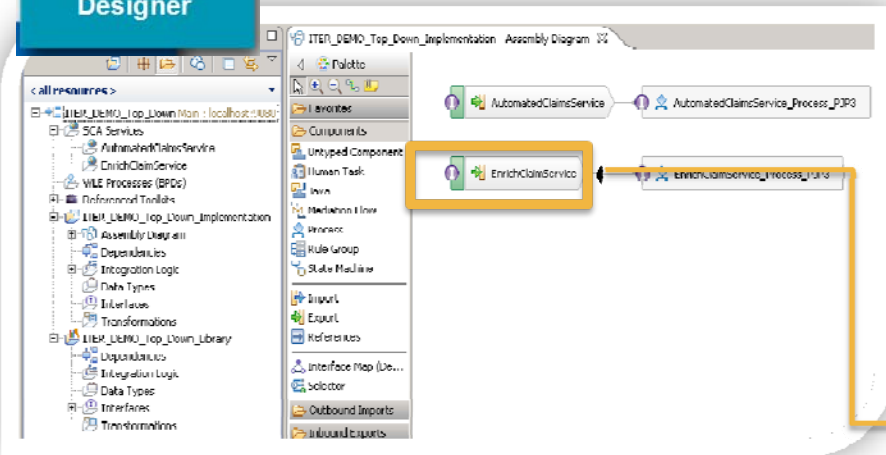
Business Process Owner

- Wires the Services implemented by Integration Developer to System Activities

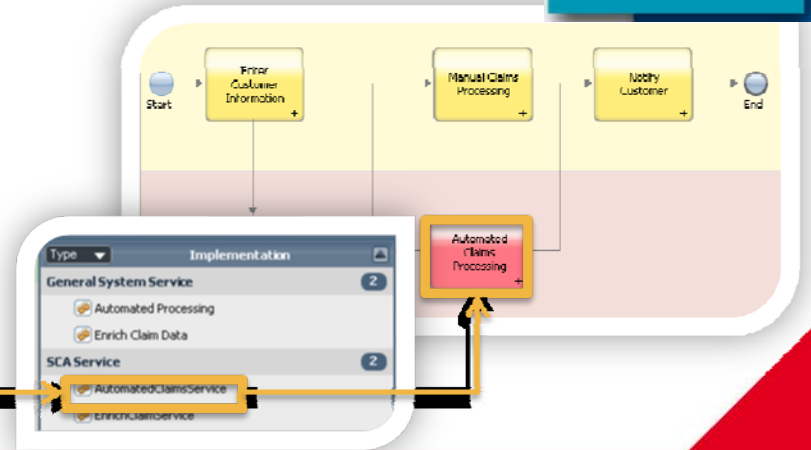
Shared Assets Versioned Assets Server Registry

Process Center

Integration Designer



Process Designer



Agenda



- IBM BPM Introduction
- IBM BPM 7.5 – Highlights
- Demonstration – IBM BPM 7.5
- Q&A

धन्यवाद

Hindi

多謝

Traditional
Chinese

ขอบพระคุณ

Thai



Спасибо

Russian

Gracias

Spanish

Thank You

English

شكراً

Arabic

Merci

French

Obrigado

Brazilian
Portuguese

Grazie

Italian

多谢

Simplified
Chinese

Danke

German

நன்றி

Tamil

ありがとうございました

Japanese

감사합니다

Korean