




# CICS Explorer Integration with CICS Tools

SOA on your terms and our expertise – [www.ibm.com/cics](http://www.ibm.com/cics)

© 2010 IBM Corporation

Revitalizing your CICS



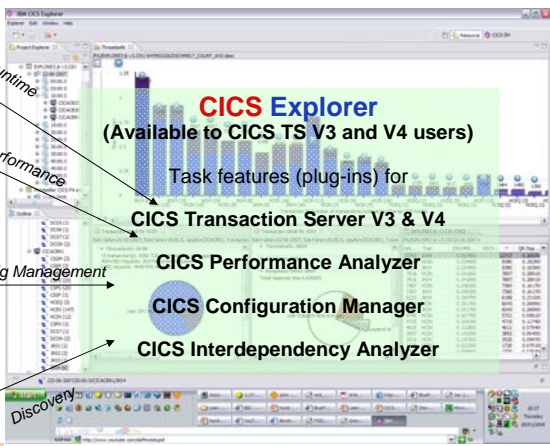
## The changing face of CICS tooling

**CICS Explorer** reduces need for multiple interfaces

**Previously...**

- Web
- ISPF
- CICS 3270
- Eclipse

**Now ...**



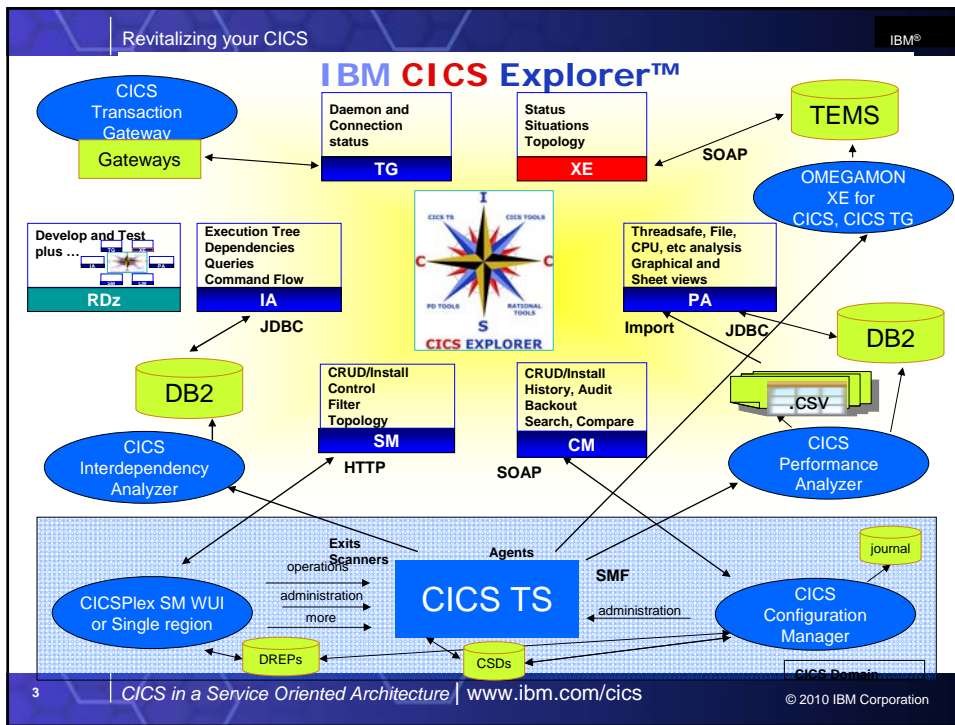
**CICS Explorer**  
(Available to CICS TS V3 and V4 users)

Task features (plug-ins) for

- CICS Transaction Server V3 & V4
- CICS Performance Analyzer
- CICS Configuration Manager
- CICS Interdependency Analyzer

Arrows indicate integration: Web to Runtime; ISPF to Performance; CICS 3270 to Config Management; Eclipse to Discovery.

2 | CICS in a Service Oriented Architecture | [www.ibm.com/cics](http://www.ibm.com/cics) | © 2010 IBM Corporation



Revitalizing your CICS

IBM®

## CICS Explorer

The screenshot shows the CICS Explorer interface with several key features highlighted:

- View Systems:** A tree view on the left showing the hierarchy of CICS systems and regions.
- View status of tasks:** A table in the center displaying task details such as Region, Task ID, Trsn ID, Object, User ID, Priority, Class, and Attach.
- Edit Resource Definitions:** A panel on the right for editing program definitions, including fields for Name, Description, Version, and Language.
- Resource and System Groups:** A view at the bottom left showing groups of resources and systems.
- Views Program Definitions:** A view at the bottom center showing details of program definitions.
- Active CICS Systems in the selected PLEX:** A view at the bottom right showing the status of active systems within a selected PLEX.
- View Queue Information:** A view at the bottom right showing queue information for the selected system.

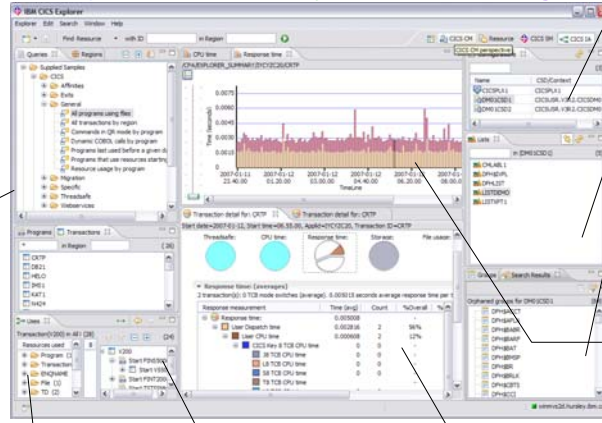
4 | CICS in a Service Oriented Architecture | www.ibm.com/cics | © 2010 IBM Corporation

# CICS Explorer & CICS Tools: Putting it all Together

Interdependency Analyzer

Performance Analyzer

Configuration Manager



- Single point of control for CSDs and DREPs
- Lists and ResDescs
- Search for Orphaned groups
- Timeline of response times

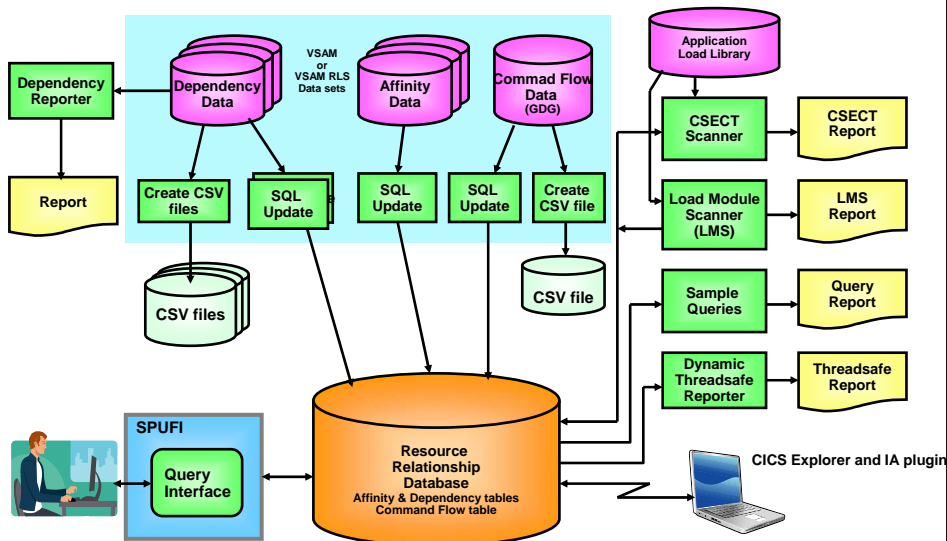
Shipped Sample Queries

View tree of resources used

Resources used by a transaction

Drilldown into transaction

# CICS IA Architecture (Reporting Structure)

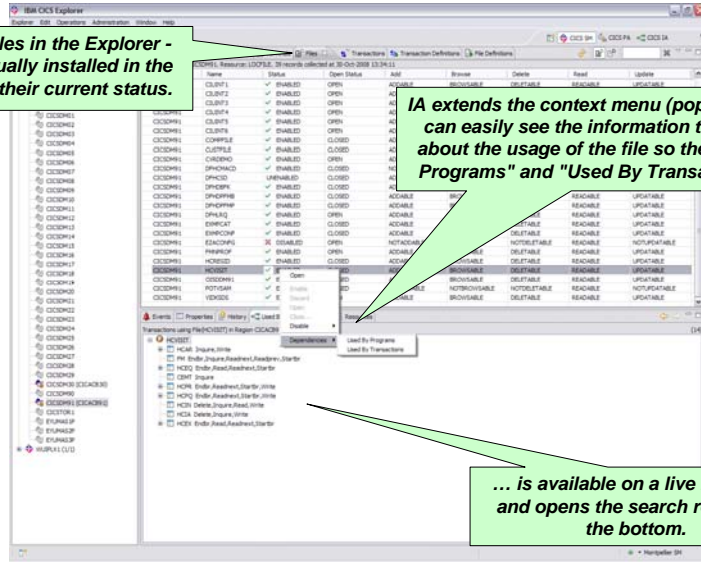


### CICS Explorer - CICS IA integration in CICSPlex SM perspective

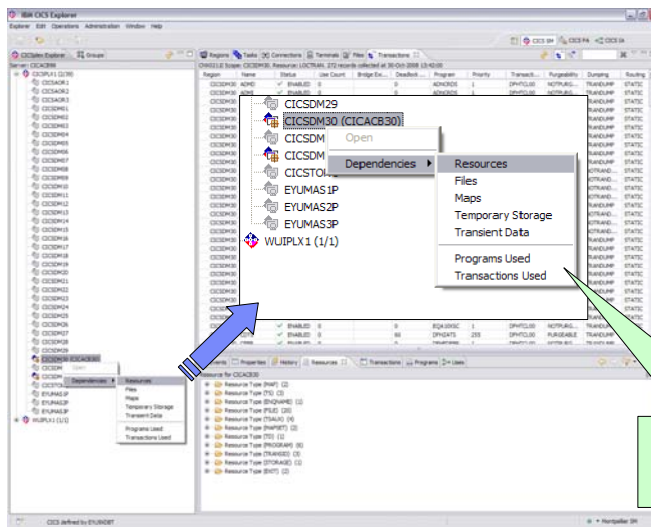
The list of files in the Explorer - the files actually installed in the region, and their current status.

IA extends the context menu (pop-up) so you can easily see the information that IA has about the usage of the file so the "Used By Programs" and "Used By Transactions" ...

... is available on a live resource and opens the search results at the bottom.



### CICS IA - CICSPlex SM integration

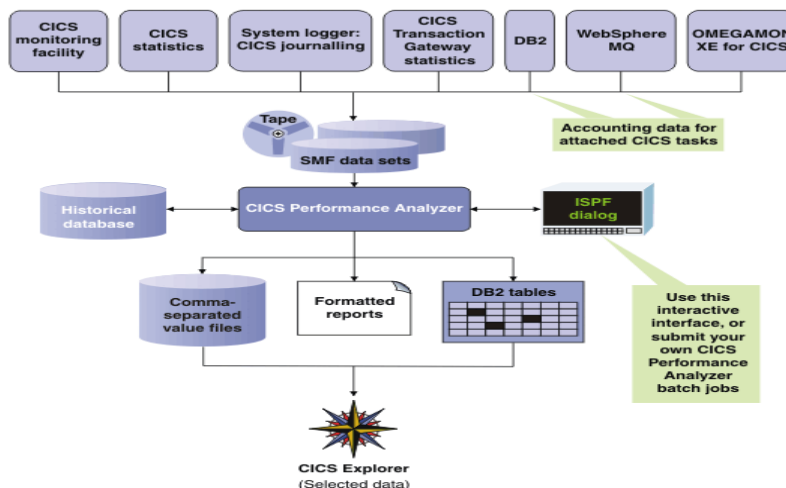


... let's see what resources are being used in this region

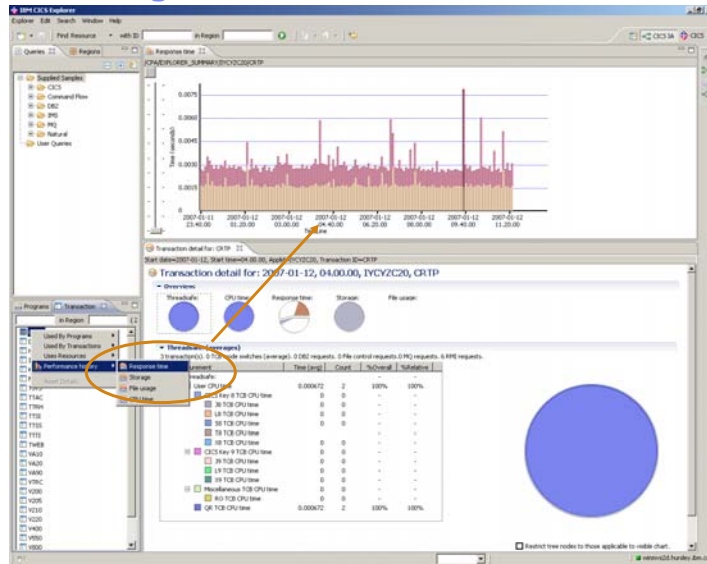
## CICS PA plug-in to the CICS Explorer

- Provides numerous methods of visualizing historical transaction performance summary data
- Access to performance data summaries and reporting scenarios using CICS PA created ...
  - CSV files from SMF 110 performance data
  - CSV files or database (DB2) from HDB performance data
- Integrates with the strategic CICS Explorer and other tooling plug-ins
- Evolutionary and responsive solution

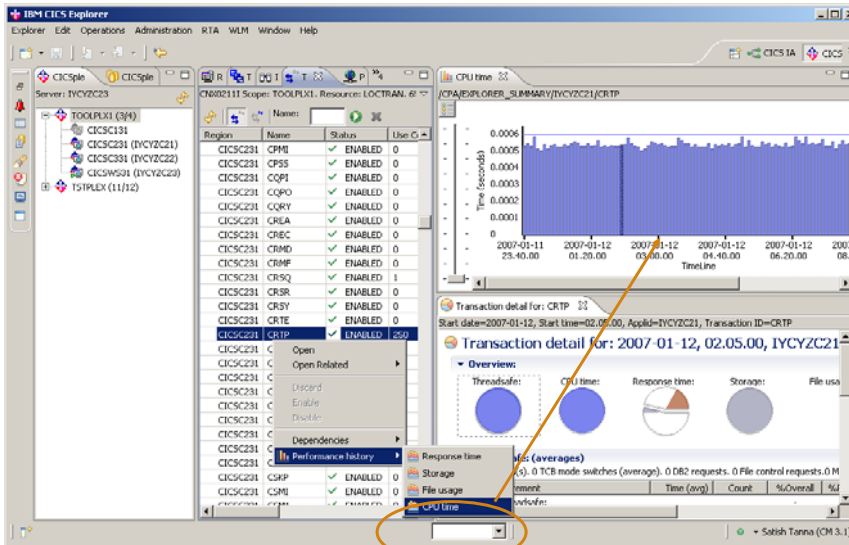
## CICS PA Overview



## CICS PA - Integration with CICS IA



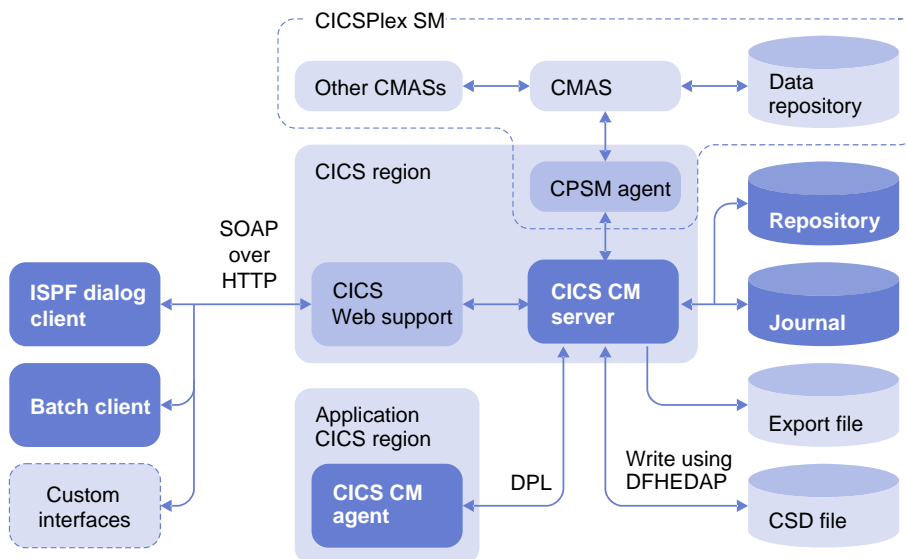
## CICS PA - Integration with CICSplex SM perspective



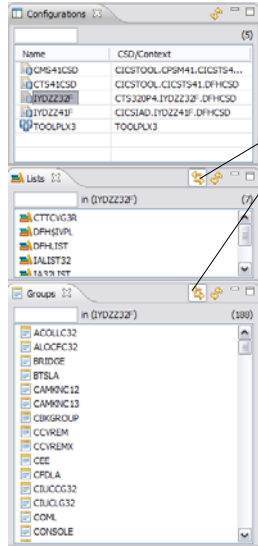
## CICS administration problems solved using CICS CM

- Working with multiple CSDs
- Working with CSD files and CICSplex SM DREPs
- Migrating changes between environments
- Delegating and approving changes
- Changes across LPAR boundaries
- Backout
- Audit compliance
- Cleanup and analysis
- Comparisons and exception analysis
- Cold start analysis

## CICS CM Component Architecture



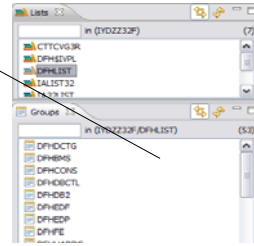
# CM - Configurations, Lists, Groups



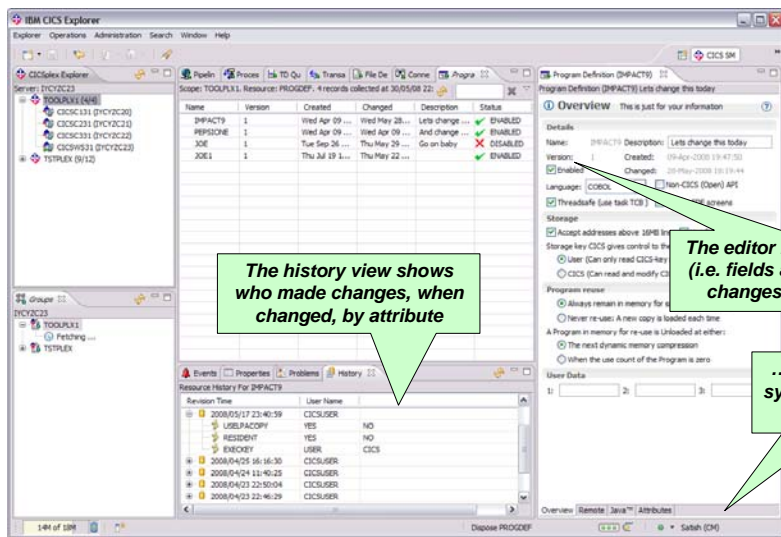
Views display configurations, lists and groups

Linked to selection – the lists and groups are displayed for the currently selected configuration. Can be toggled on and off.

Groups can also be displayed for the currently selected list



# CICS Explorer - Program Definition editor - CICS CM



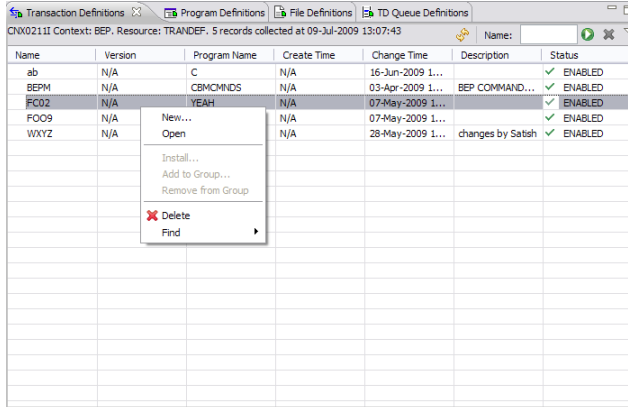
The history view shows who made changes, when changed, by attribute

The editor is input capable (i.e. fields aren't grey) and changes can be made

...because same system connected to using CM



## CM - Creating, editing and deleting a resource definition

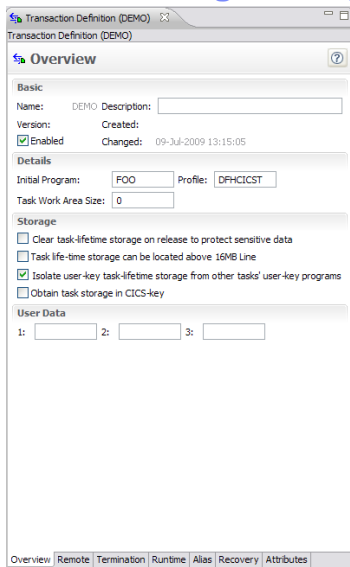


Can open a creation wizard from different paths.

Within a definitional view select the "New..." menu.

Select a group and select an option from the "New..." menu.

## CM - Creating, editing and deleting a resource definition



Once create completes the resource is opened in an editor, where further changes can be made.

The resource has been created at this point.

These editors are the same as those used for the CICS Explorer, they inherit the validation and embedded help framework.

## CM - History

Display by date groupings

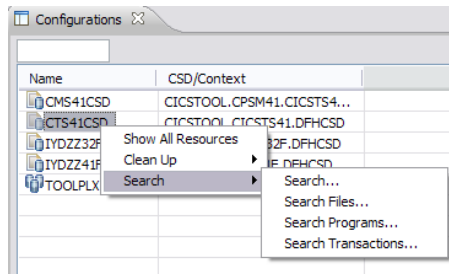
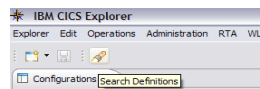
Revision Time	Resource Name/After	Resource Type/Before	Group	User Name	Command	Change P...	Scheme
Today							
2009/07/09 13:43	FOO9	TRANDEF	BEP	CICSUSER	UPDATE		
Older Than This Month							
2009/05/07 17:52	FOO9	TRANDEF	BEP	CICSUSER	CREATE		

Sort by columns by clicking on column header

Revision Time	Resource Name/...	Resource Type/Before	Group	User Name	Command	Change P...	Sch
2009/05/27 09:31:41	A	ATOMDEF	BEP	CICSUSER	DELETE		
2009/05/27 09:31:37	A	ATOMDEF	BEP	CICSUSER	CREATE		
2009/07/09 13:18:35	DEMO	TRANDEF	BEP	CICSUSER	DELETE		
2009/07/09 13:15:28	DEMO	TRANDEF	BEP	CICSUSER	CREATE		
2009/05/07 17:53:37	FOO2	TRANDEF	BEP	CICSUSER	CREATE		
2009/07/09 13:43:41	FOO9	TRANDEF	BEP	CICSUSER	UPDATE		
2009/05/07 17:53:19	FOO9	TRANDEF	BEP	CICSUSER	CREATE		
2009/05/18 14:40:28	FOOOO	TCPDEF	BEP	CICSUSER	CREATE		
2009/06/05 15:27:20	3000	CONDEF	BEP	CICSUSER	DELETE		

## CM - Searching

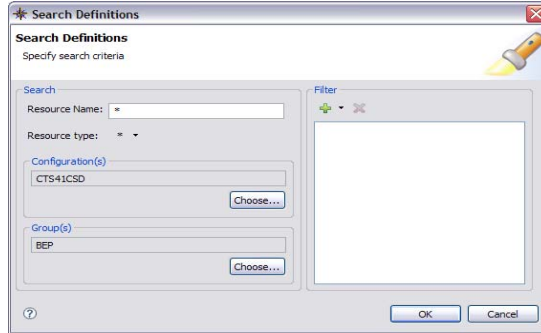
You can drive the search dialog from the toolbar



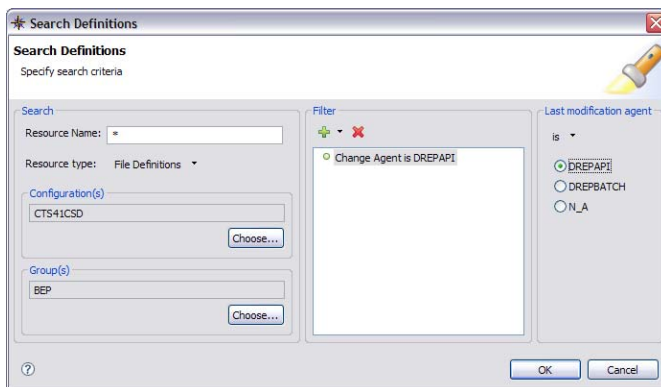
Or from one of the search options on a configuration or group

## CM - Searching

From the search dialog you can specify name, type, configurations(s) and groups within a particular configuration



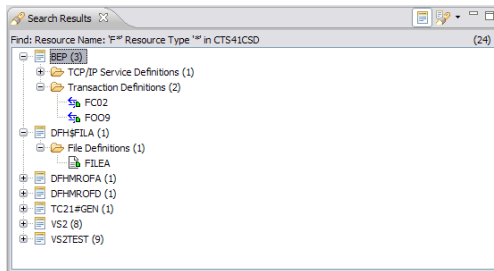
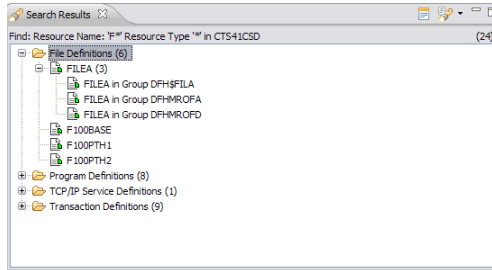
## CM - Searching



If a resource type is specified further filtering can be done on attribute values

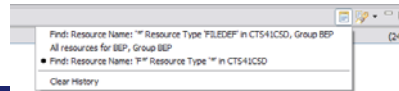
## CM - Searching

Results are displayed in the Search results view



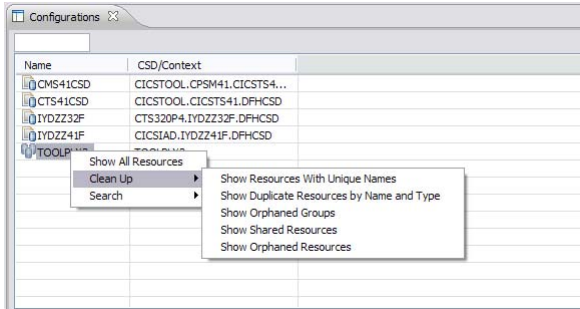
Results can be arranged by group

Result history

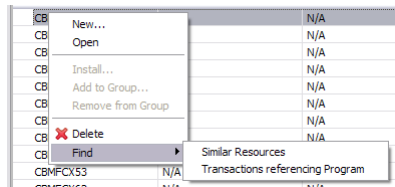


## CM - Clean Up – Specific Searches

Some searches to aid in resource and CSD clean up have been provided



Some specific searches on certain resource types:  
 LSRPool  
 Program



## CM - Operational Definitions

The screenshot shows the 'Preferences' dialog box with the 'Connections' tab selected. The 'Connections' section is titled 'Connections' and contains the following fields and options:

- Connection:**
  - Type: Configuration Manager (dropdown)
  - Name: CM 2.1 Connection (dropdown)
  - Buttons: New, Connect, Delete
- Location:**
  - Host name: WINMVS2E.HURSLEY.IBM.COM
  - Port number: 8990
- Authentication:**
  - User ID: KAT
  - Password: [masked]
  - Warning: Saved passwords are stored on your computer in a file that is difficult, but not impossible, for an intruder to read.
- CICS Connection:**

Name	Type
<input checked="" type="checkbox"/> 4.1 Connection	CICS Management Interface
<input type="checkbox"/> Old data connection to 4.1	CICSplex SM Data Interface

Buttons at the bottom: Restore Defaults, Apply, OK, Cancel.

You can associate a CMCI or a CICSplex SM Data connection with your CM connection, to allow management of operational resources alongside use of CM