



# IBM's System z Forum

---

## CICS and Problem Determination Tools for z/OS update

*Learn about CICS Explorer and the PD Tools  
Eclipse tooling enhancements*

Kenichi Yoshimura ([kenichi@au1.ibm.com](mailto:kenichi@au1.ibm.com))

Architect, Problem Determination Tools Modernization  
Development Manager, File Manager for z/OS

Australia Development Laboratory



# IBM CICS Explorer – New Face of CICS



- CICS Transaction Servers enjoys 40+ years popularity as a transaction process software for large and small enterprises.
- Since V4.1, significant enhancements to modernize the user experience which improves productivity of seasoned system administrators & application developers, as well as new comers for CICS and z/OS environment.
- Eclipse based user interface.

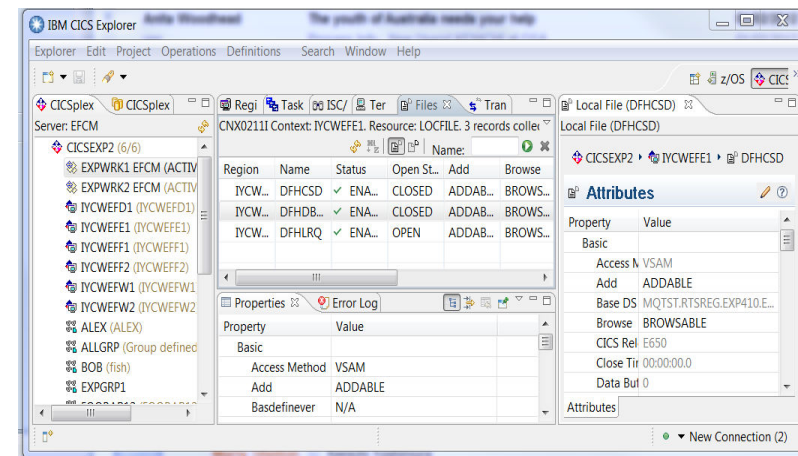
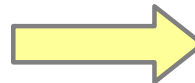
```

DEFINE MAPPSET
OVERTYPE TO MODIFY
CEDA DEFINE MAPPSET(
Mappset => INOSET1
Group => MYGROUP
Description =>
REident => No No | Yes
USRpe => Normal Normal | Transient
USRcopy => No No | Yes
Status => Enabled Enabled | Disabled
RSI : 00 0-24 | Public
)
CICS RELEASE = 0630
  
```

MESSAGES: 2 SEVERE

SYSD=CICS APPLID=CICS

PF 1 HELP 2 COM 3 END 6 CRR 7 SR 8 SPH 9 RSG 10 SB 11 SF 12 CNCL



# IBM CICS Explorer – Integrates IBM, vendors, and user tools

Session and user views,  
Configuration, Broadcast,  
User and Admin  
commands

**Session Manager**

Daemon & Connection  
Status & Test

**Transaction Gateway**

Manipulate, browse  
z/OS data sets,  
z/FS, MQ

**File Manager**

CICS, IMS, DB2,  
& z/OS  
Abend Reporting  
& Diagnosis

**Fault Analyzer**

Threadsafe, File, CPU,  
Response Time, Statistics,  
Alerts, Graphical and  
Sheet views

**Performance Analyzer**

The screenshot shows the IBM CICS Explorer interface. On the left, a tree view shows the CICSplex structure with resources like EXPWRK1, IYCWEFD1, IYCWEFE1, IYCWEFF1, IYCWEFF2, IYCWEFW1, IYCWEFW2, ALEX, ALLGRP, BOB, and EXPGRP1. The main pane displays a table of data sets for the context IYCWEFE1. The table has columns for Region, Name, Status, Open St., Add, and Browse. The data rows are:

Region	Name	Status	Open St.	Add	Browse
IYCW...	DFHCSD	✓ ENA...	CLOSED	ADDAB...	BROWS...
IYCW...	DFHDB...	✓ ENA...	CLOSED	ADDAB...	BROWS...
IYCW...	DFHLRQ	✓ ENA...	OPEN	ADDAB...	BROWS...

Below the table is a Properties window showing details for the selected data set:

Property	Value
Access Method	VSAM
Add	ADDABLE
Basdefinever	N/A

On the right, there is an Attributes window showing properties like Access Method (VSAM), Add (ADDABLE), Base DS (MQTST.RTSREG.EXP410.E...), Browse (BROWSABLE), CICS Rel (E650), Close Tir (00:00:00.0), and Data Buf (0).

CICS, IMS,  
DB2, & z/OS  
Application  
Debugging

**Debug Tool**

CICS, IMS, DB2,  
& z/OS  
Observation Requests  
& Reporting

**APA**

Execution Tree  
Dependencies  
Queries  
Command Flow

**Interdependency Analyzer**

CRUD/Install  
History, Audit  
Backout  
Search, Compare

**Config Manager**

Deployment,  
Discovery,  
Visualization, Cloning,  
Automation & Control

**Deployment Assistant**

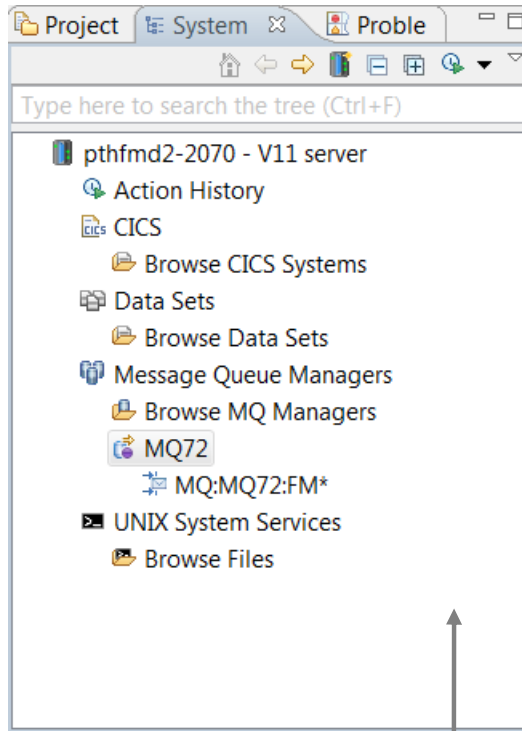
Develop  
Test  
Etc

**RDz**

Configuration  
Status  
Control, Test

**MQ**

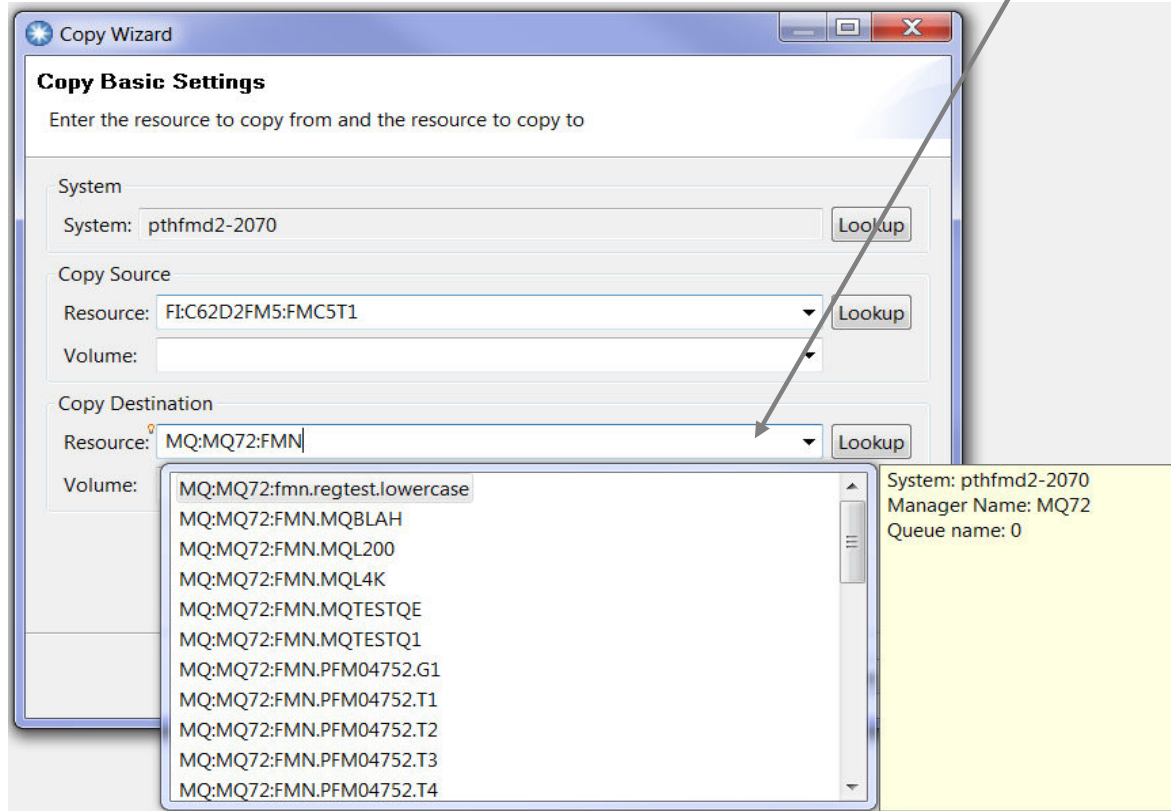
# Example: File Manager plug-in



Copy any combination of:

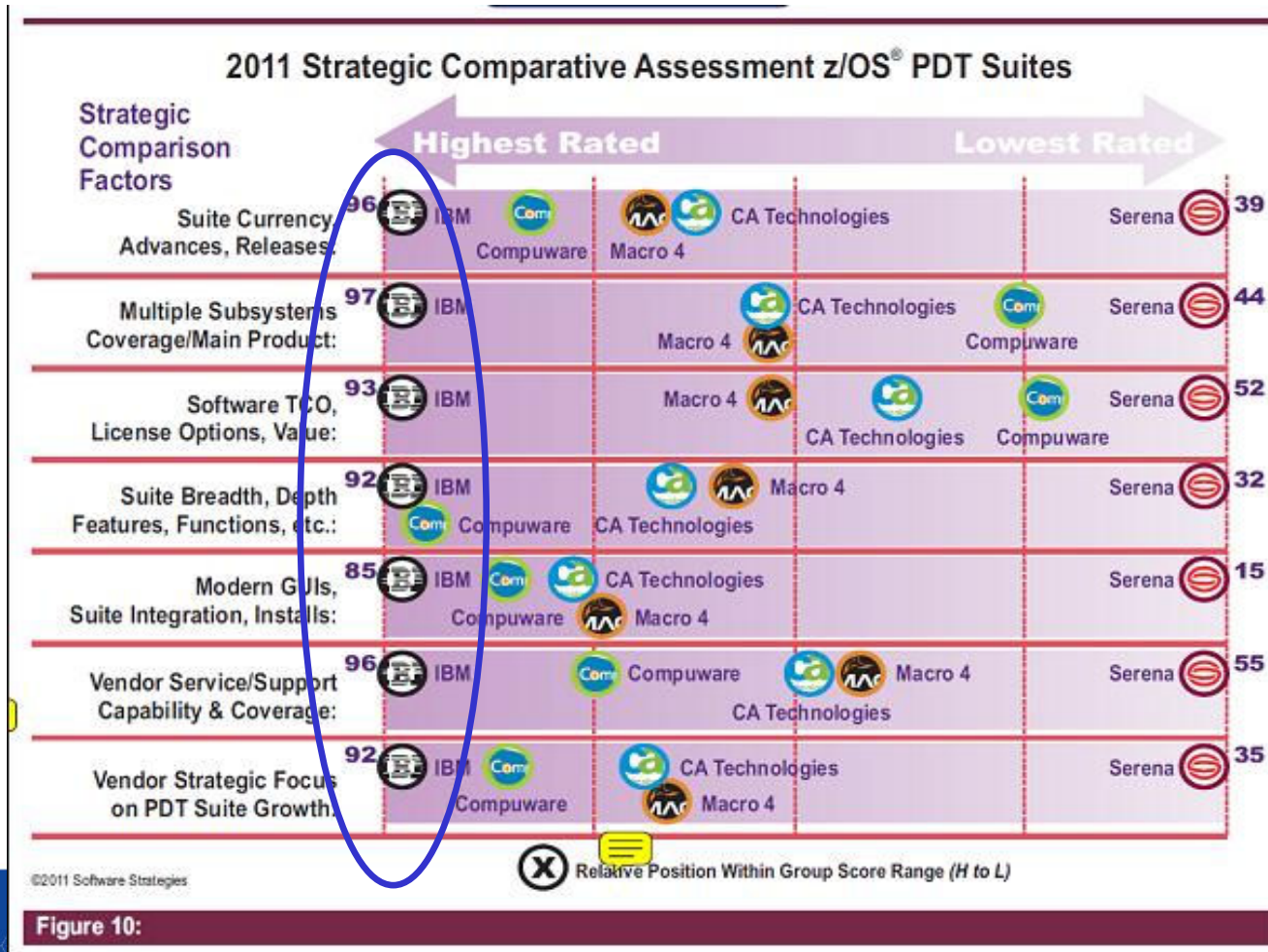
- CICS files, TD and TS queues
- MQ queues
- Data sets and USS files

Lookup resources to browse and manipulate





# IBM Problem Determination Tools Wins Top Spot Software Strategies Analyst Report, 2011



Source: [Software Strategies 2011](#)

## ADL and Lab Advocacy Program

- IBM Software Group development laboratory in Australia since 2006.
- A broad range of technical expertise in System z, security, web technology, Linux and much more.
- Lab advocacy program – having a friend in IBM development organisation:
  - Offered free of charge.
  - Having direct access to and ongoing relationship with IBM's technical leaders.
  - Help you understand IBM strategy and navigate IBM.
  - We (software developers) would like to understand your business and requirements better.



## ADL and Lab Advocacy Program

### - Potential topics for discussion

- Strategic:
  - Eclipse based tools (eg. CICS Explorer) versus web based tools (eg. z/OSMF).
  - Where should PD Tools fit and what you like/don't like about them?
- Sharing practical experiences:
  - Deploying Rational Team Concert for mainframe application development.
- Technical vitality:
  - Master the mainframe contest in Australia since 2009 which attracted around 400 students each year.
  - What can we do more to help?







Thank you!

Any Questions?

Kenichi Yoshimura ([kenichi@au1.ibm.com](mailto:kenichi@au1.ibm.com))

Architect, Problem Determination Tools Modernization  
Development Manager, File Manager for z/OS

Australia Development Laboratory





© Copyright IBM Australia Limited 2012. ABN 79 000 024 733. © Copyright IBM Corporation 2012. All Rights Reserved.

TRADEMARKS: IBM, the IBM logos, ibm.com, smarter planet and the planet icon are trademarks of IBM Corporation registered in many jurisdictions worldwide. Other company, product and services marks may be trademarks or services marks of others. A current list of IBM trademarks is available on the Web at "Copyright and trademark information" at [www.ibm.com/legal/copytrade.shtml](http://www.ibm.com/legal/copytrade.shtml).

IMPORTANT PRIVACY INFORMATION: If you or your organisation would prefer not to receive further information on IBM products, please advise us on 132 426 (Australia) or 0800 444 714 (New Zealand). If you would like IBM Australia Limited to refrain from sending you commercial electronic messages you may send an unsubscribe message to [contact@au1.ibm.com](mailto:contact@au1.ibm.com). The sending of this message was authorised by IBM Australia Limited, and IBM Australia Limited can be contacted at [rlm@au1.ibm.com](mailto:rlm@au1.ibm.com) or on 132 426 (Australia) or 0800 801 800 (New Zealand). IBM may store data on international servers used by it. GL\_13679