

BusinessConnect and SolutionsConnect

It's time to make bold moves.

Cloud has a silver lining

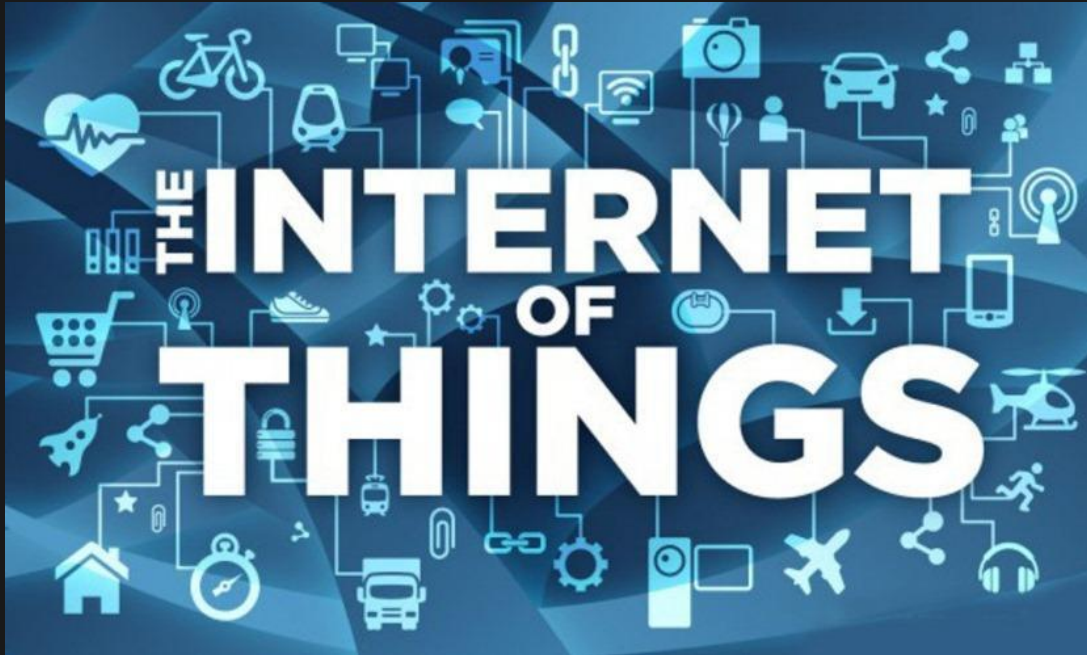
Re-making Enterprise IT

Andrew Kupetz, Cloud CTO
IBM Australia & New Zealand



Where is the World of Cloud Going?

The Internet of things **everything** mobile **everywhere** composed **any-way**



Think any function:

Apps
everyone to everyone

APIs
machine to machine

Machine
As any thing

=

Central Nervous System

Cloud Computing is About Principles and Design

Cloud Computing Business & IT Benefits

Legacy

No cloud computing qualities

Slow outcomes
Change paralysis
Expensive
Risky
Lock in
Rigid
“Big” & Monolithic
Pay for “everything”
One off
High touch (manual)
Managed Service
Think HW + SW +
Applications

Cloud Enabled

Partial qualities

Note: traditional technologies
can have cloud qualities

Cloud Native

Inherent qualities

Fast outcomes
Continuous delivery
Value
Mitigated
Freedom of choice
Scalable & elastic
Plug in & out capability
Pay for what you need
Mass re-use
Low touch (autonomic)
Self service
Think Apps, APIs & Services

*“Make no mistake,
IBM is remaking enterprise
IT for the era of cloud.”*

– Ginni Rometty



Cloud as a Growth Engine for Business



Think it.

Strategize how to to monetize new value, and reduce costs

\$2B

SoftLayer Acquisition

\$1.2B

Data Center Expansion



Build it.

Build and run hybrid cloud computing solutions

\$7B+

Acquisition Investment



Tap into it.

Utilize cloud services delivered from IBM Cloud Marketplace

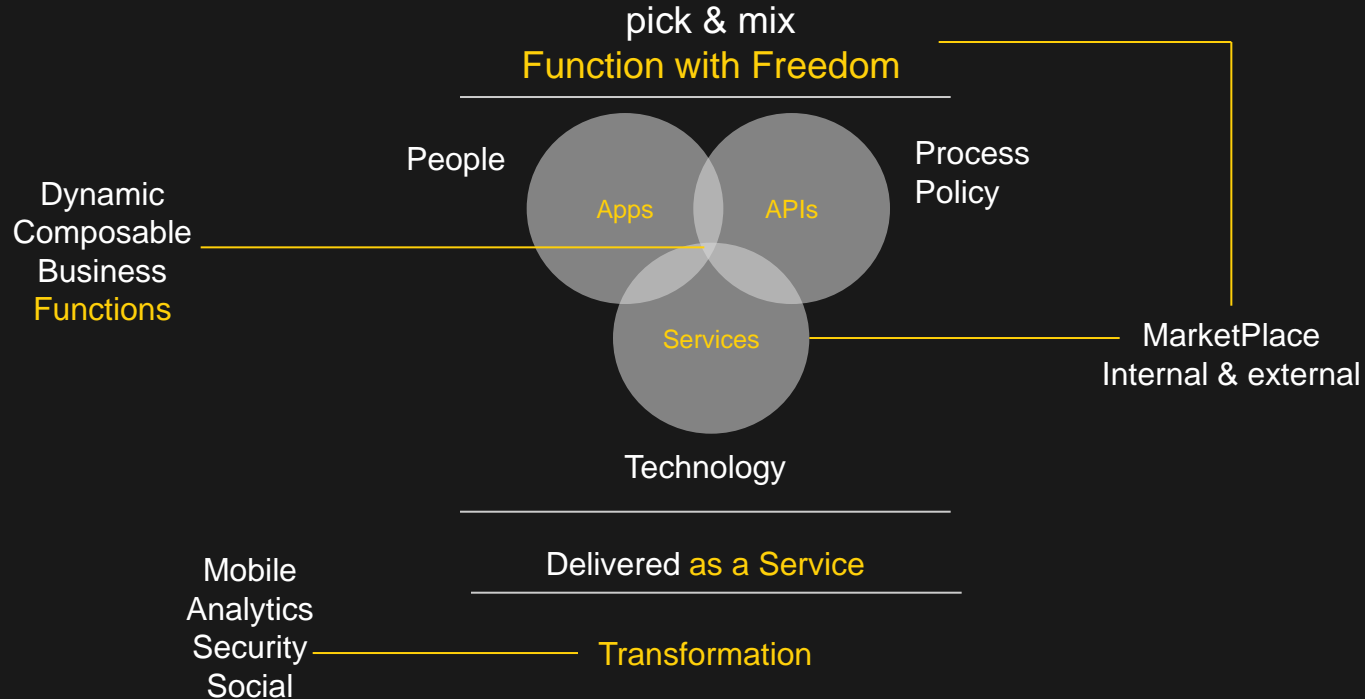
100+

SaaS Offerings

40,000+

Experts

Cloud Computing is Function with Freedom

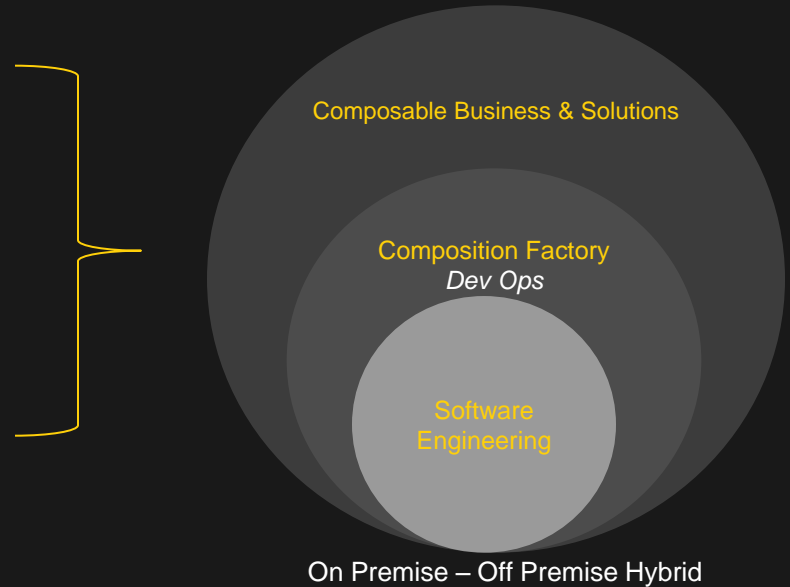


Cloud Computing Requires a New Organisational Model

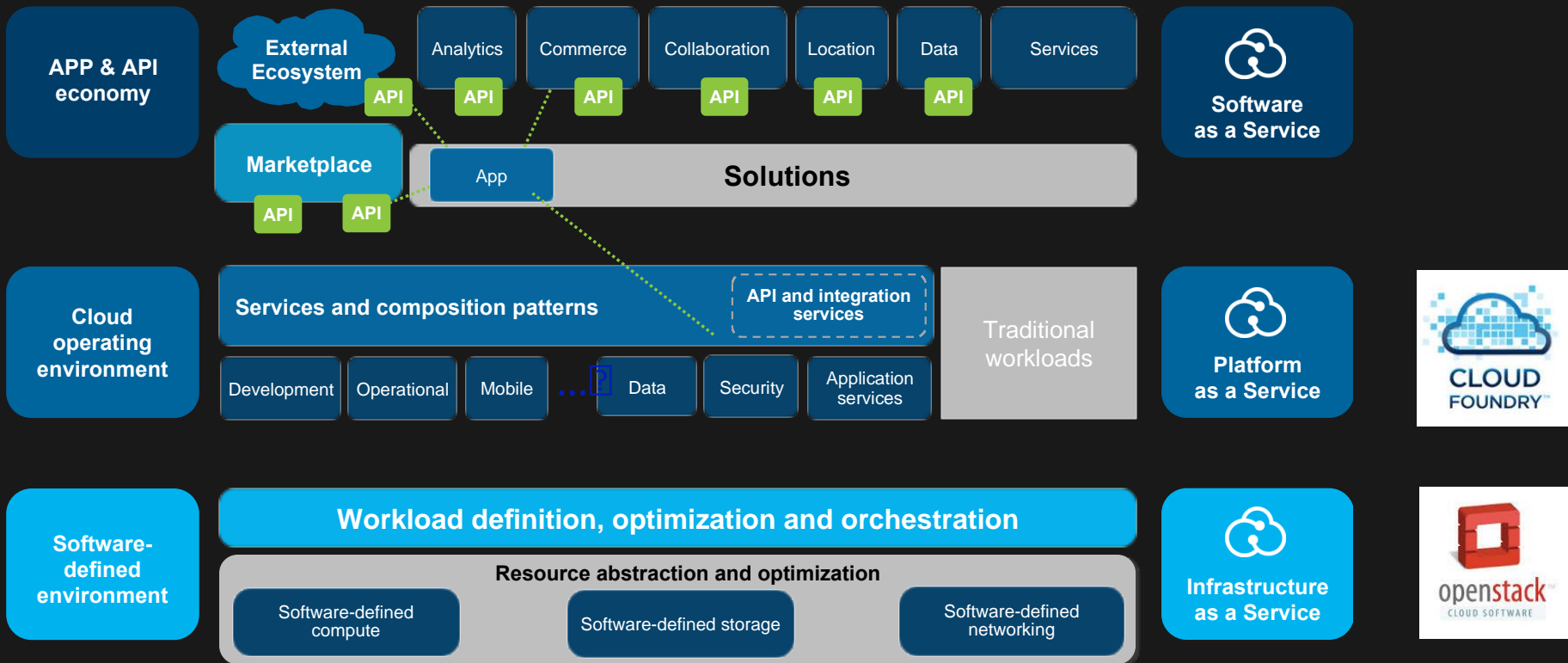
IBM Cloud Marketplace
pick & mix **Components as a Service**

aS aa S	Application Services	Software aaS
aS aa S	Application Platform Services	Via APPs & APIs
IaaS	Infrastructure Services	Hardware

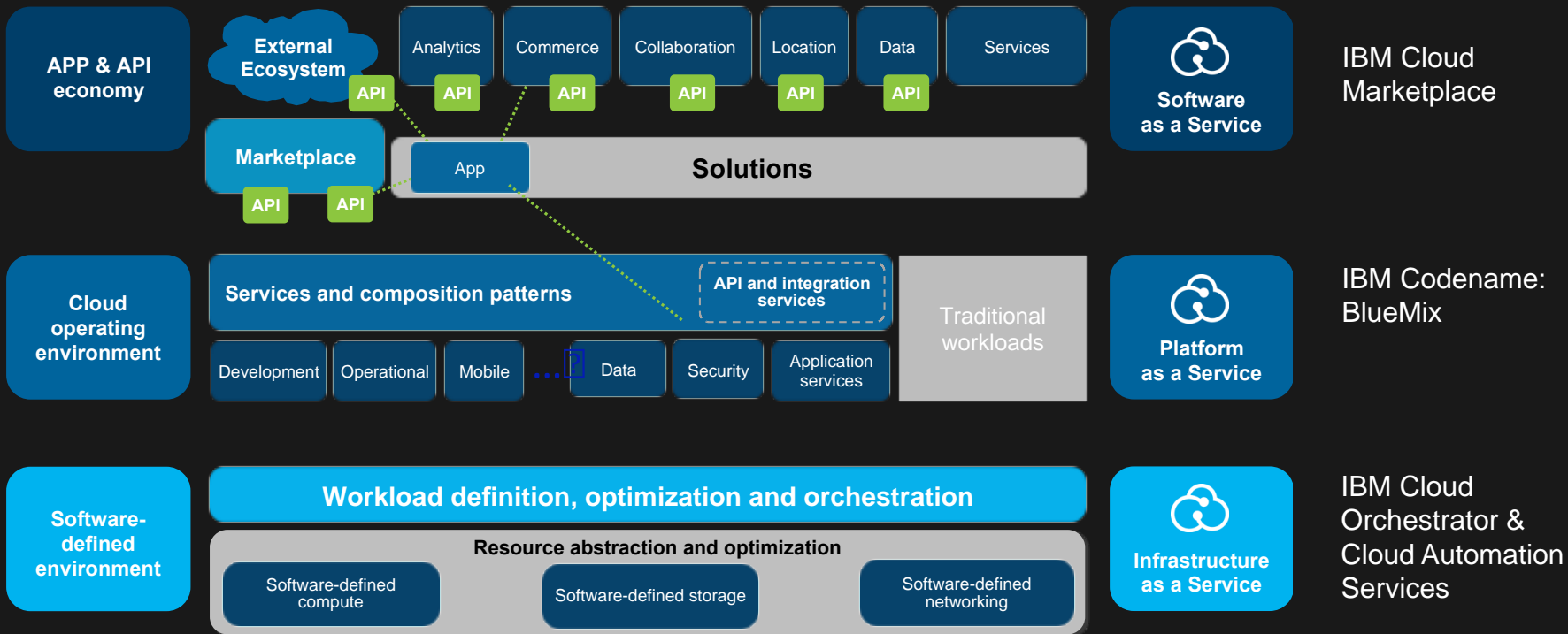
The new Business & IT
Solutions as a Service



The Next-generation Cloud Computing Platform



IBM's Next-generation Cloud Computing Platform Enablers

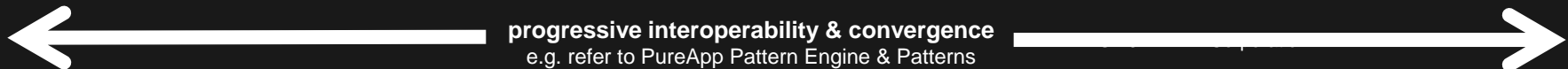


IBM SoftLayer & Cloud Managed Services

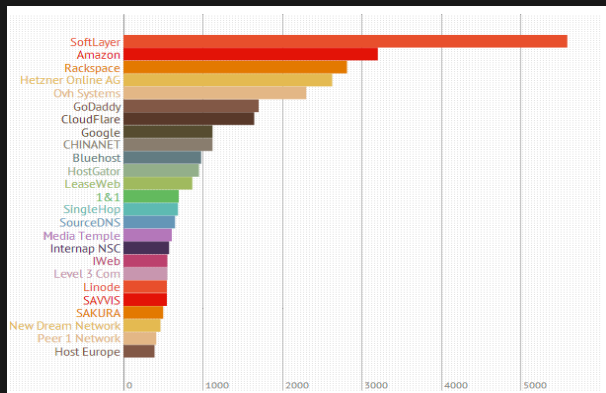
IBM Cloud IaaS Portfolio

enabling complementary solutions to match location, purpose & workload needs

Integrated System <i>for on premise</i>	SW & Prof. Services <i>for on premise</i>	Cloud Enabled (aaS) <i>for high touch needs</i>	Cloud (aaS) <i>for low touch needs</i>
Expert Integrated System	Modular Cloud Builder	Client off premise Cloud Enabled DC SO	Client off premise Premium IaaS+PaaS
IBM PureApplication System	Private Modular Cloud	Cloud Managed Services	SOFTLAYER an IBM Company
<ul style="list-style-type: none"> • Pre integrated application system providing platform services • Rapid and reliable provisioning of optimized pattern-based applications • Automated monitoring and management of application • 200+ traditional application, middleware & database provisioning patterns 	<ul style="list-style-type: none"> • Out of the box private cloud builder (server, storage & network). • Option of VMWare, OpenStack and IBM SmartCloud Orchestrator cloud management software stacks • HW agnostic. IBM PureFlex, SoftLayer, Client • 200+ traditional application, middleware & database provisioning patterns 	<ul style="list-style-type: none"> • Suited to legacy and traditional 3 Tier application models, (App, MW and DB) • Requires a highly built out and resilient infrastructure & operational environment • Typical applications being SAP & Oracle ERP, CRM solutions 	<ul style="list-style-type: none"> • Designed for Cloud Computing • Suited to web 2.0, cloud enabled and cloud native programming models • Resiliency is built into the platform/app layer • Typical services include MongoDB, NodeJS, RabbitMQ
Infrastructure (HW & SW) Client or Provider DC Premise	Client, IBM or Softlayer Infrastructure & Premise	IBM Premise	SoftLayer Premise



IBM SoftLayer



Formed by 10 industry veterans in 2005

Model predicated on software-driven infrastructure

Unencumbered by early-industry legacy restrictions

Founding principles

Innovation, Empowerment, Automation, Integration

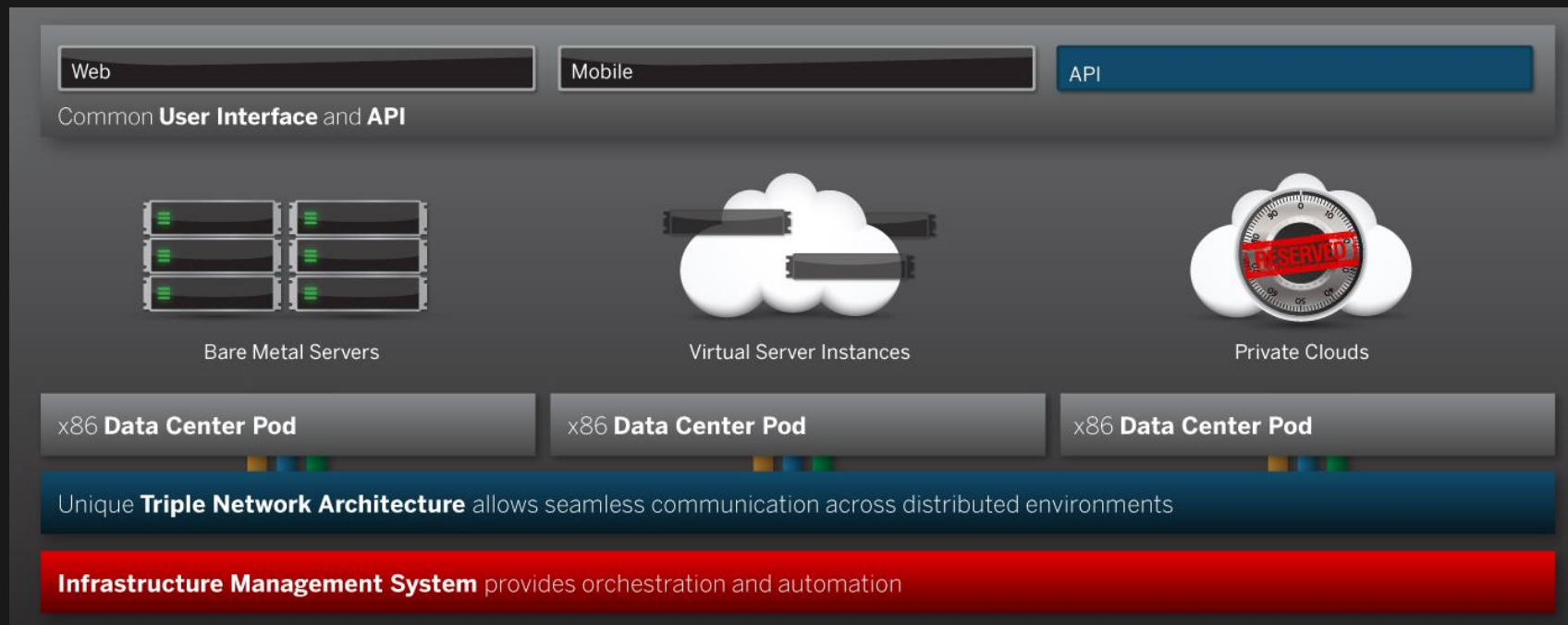
Acquired by IBM in July 2013

IBM SoftLayer Global Hub

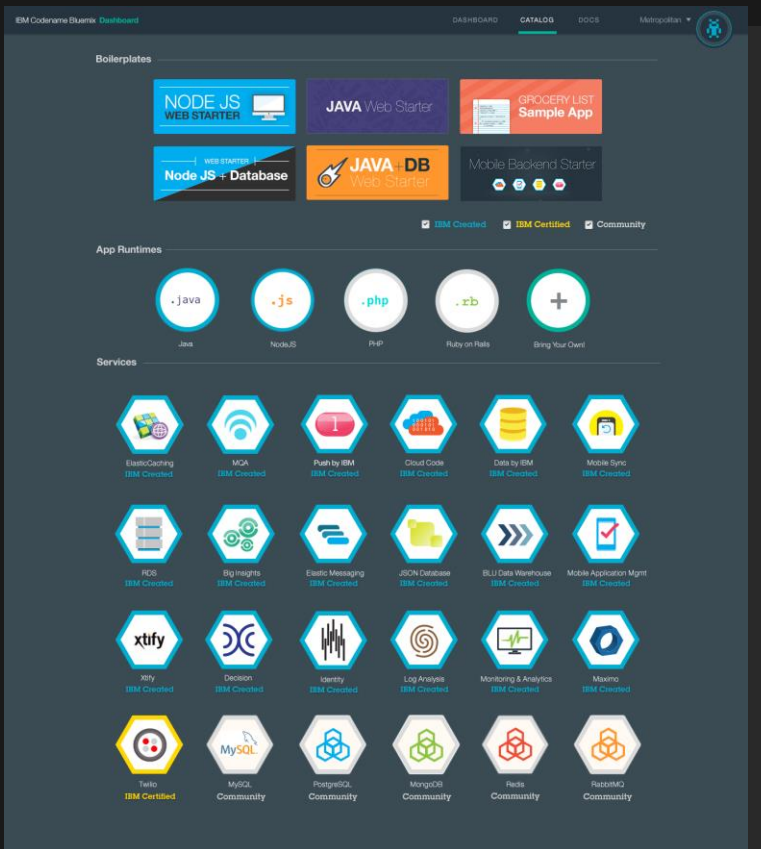


IBM SoftLayer Differentiation

Private. Public. Hybrid. One portal. One set of APIs. One platform.



IBM Codename: BlueMix



application Platform as a Service

Build & run your Apps

Any language runtime

DevOps

Continuous software delivery

Compose from APIs and Services

A catalog of open source, IBM and third party APIs

Cloud Integration

Build hybrid environments

Extend SaaS Apps

Extend SaaS App SDKs to new use cases (e.g., Mobile, Analytics)

IBM's Cloud Marketplace

IBM Cloud Marketplace 2H 2014

IBM Branded website for line of business, Developers & IT teams to build, consume & market offerings

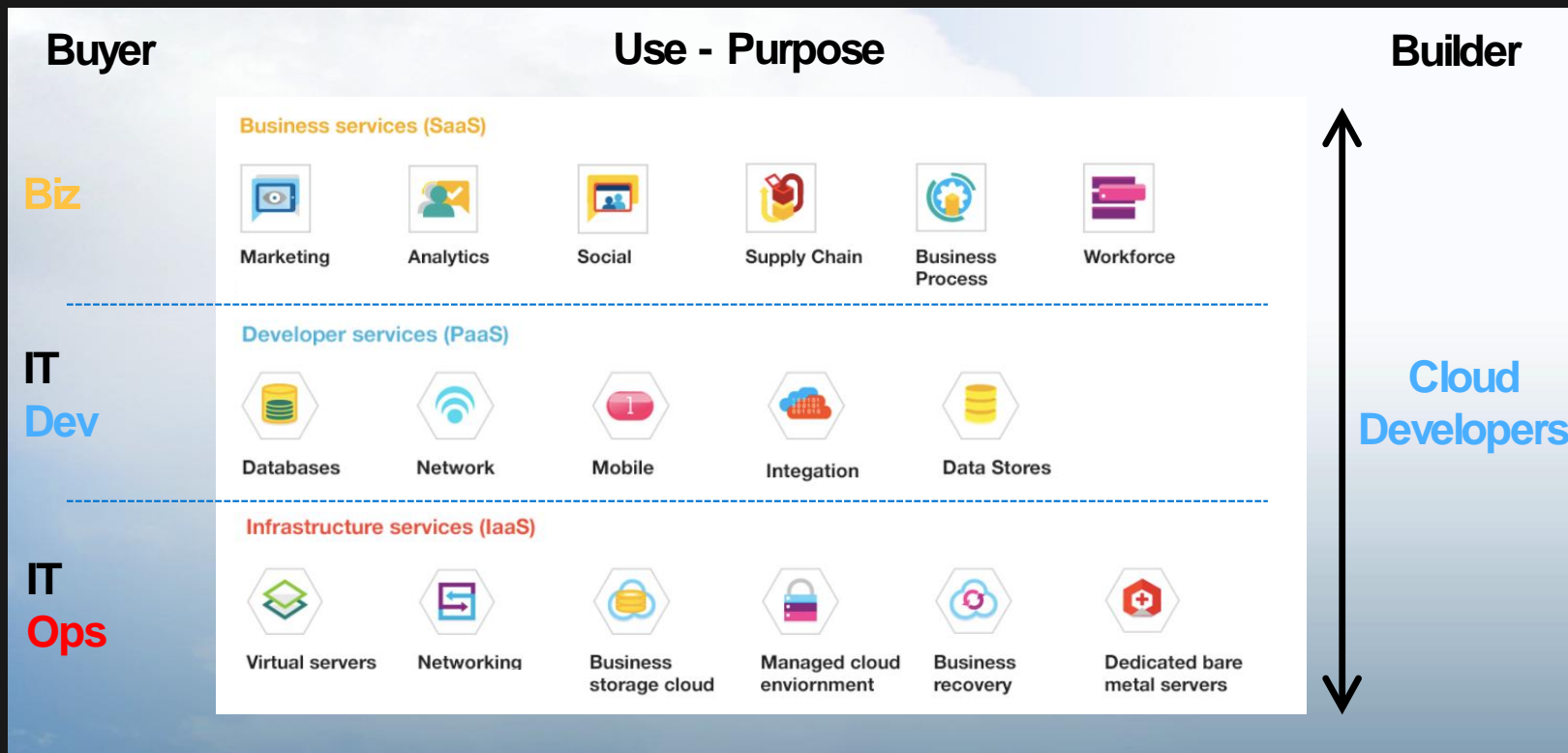
Single point of entry for IBM's extensive IaaS, PaaS &aaS offerings

IaaS Softlayer hosted provider services

PaaS IBM Bluemix, IBM Pattern Engine & IBM High Performance Computing eg. Big Data

aaS Providers can integrate their services (Apps & APIs) to the marketplace – partners, independent developers and MSPs

IBM's Cloud Marketplace



Moving to a new world?

- Systems of Engagement versus Systems of Record
- The old
 - Quarantine
 - Expose
 - Hollow out
- Compose the new



akupetz@au1.ibm.com